

Data Path : Z:\pestpcbsrv\HPCHEM1\ECD_P\Data\PP051425\
 Data File : PP072095.D
 Signal(s) : Signal #1: ECD1A.ch Signal #2: ECD2B.ch
 Acq On : 15 May 2025 10:22
 Operator : YP\AJ
 Sample : I.BLK
 Misc :
 ALS Vial : 2 Sample Multiplier: 1

Instrument :
 ECD_P
 ClientSampleId :
 I.BLK

Integration File signal 1: autoint1.e
 Integration File signal 2: autoint2.e
 Quant Time: May 15 12:09:43 2025
 Quant Method : Z:\pestpcbsrv\HPCHEM1\ECD_P\methods\PP042225.M
 Quant Title : GC EXTRACTABLES
 QLast Update : Wed Apr 23 05:02:06 2025
 Response via : Initial Calibration
 Integrator: ChemStation

Volume Inj. : 2 µl
 Signal #1 Phase : ZB-MR1 Signal #2 Phase: ZB-MR2
 Signal #1 Info : 30Mx0.32mmx 0.50µ Signal #2 Info : 30M x 0.32mm x 0.25µm

Compound	RT#1	RT#2	Resp#1	Resp#2	ng/ml	ng/ml

System Monitoring Compounds						
1) SA Tetrachlo...	4.507	3.801	33527146	27037046	16.910	19.194m
2) SA Decachlor...	10.216	8.825	25977191	18413860	17.940	20.995m

Target Compounds

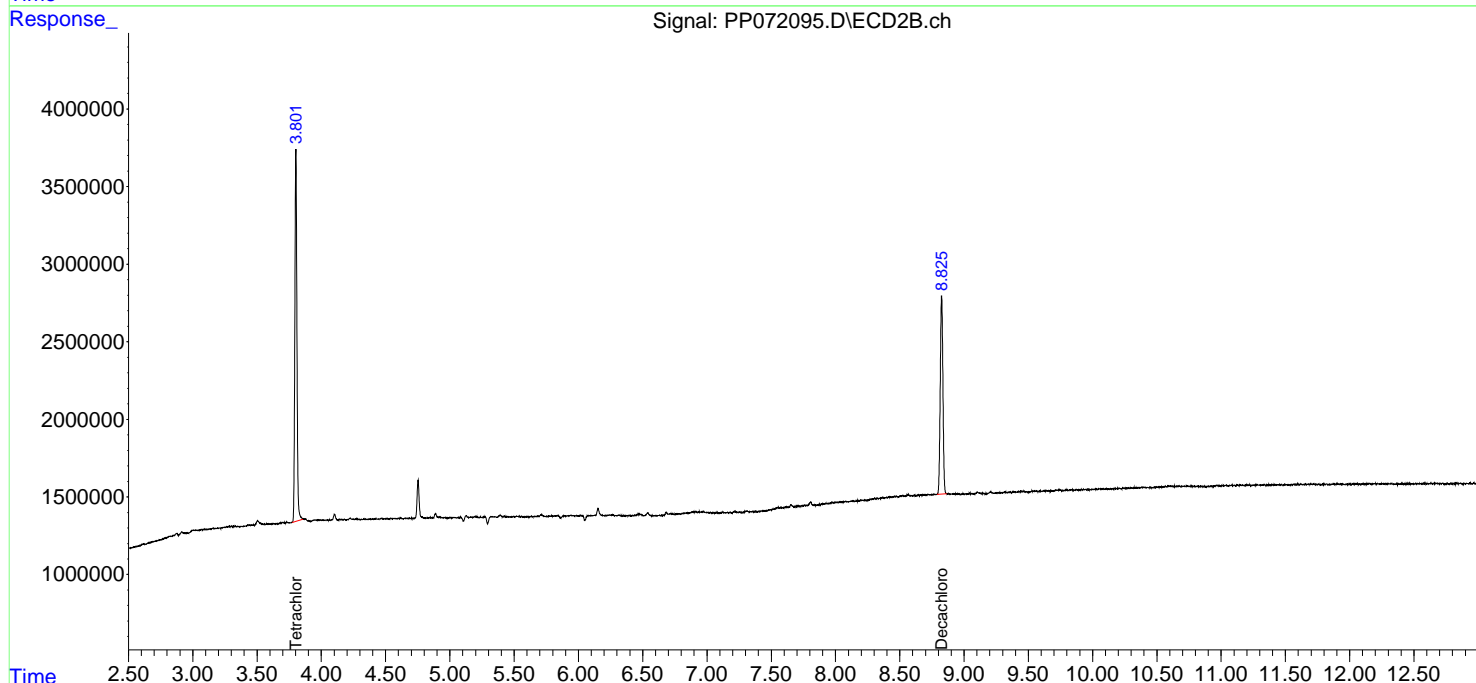
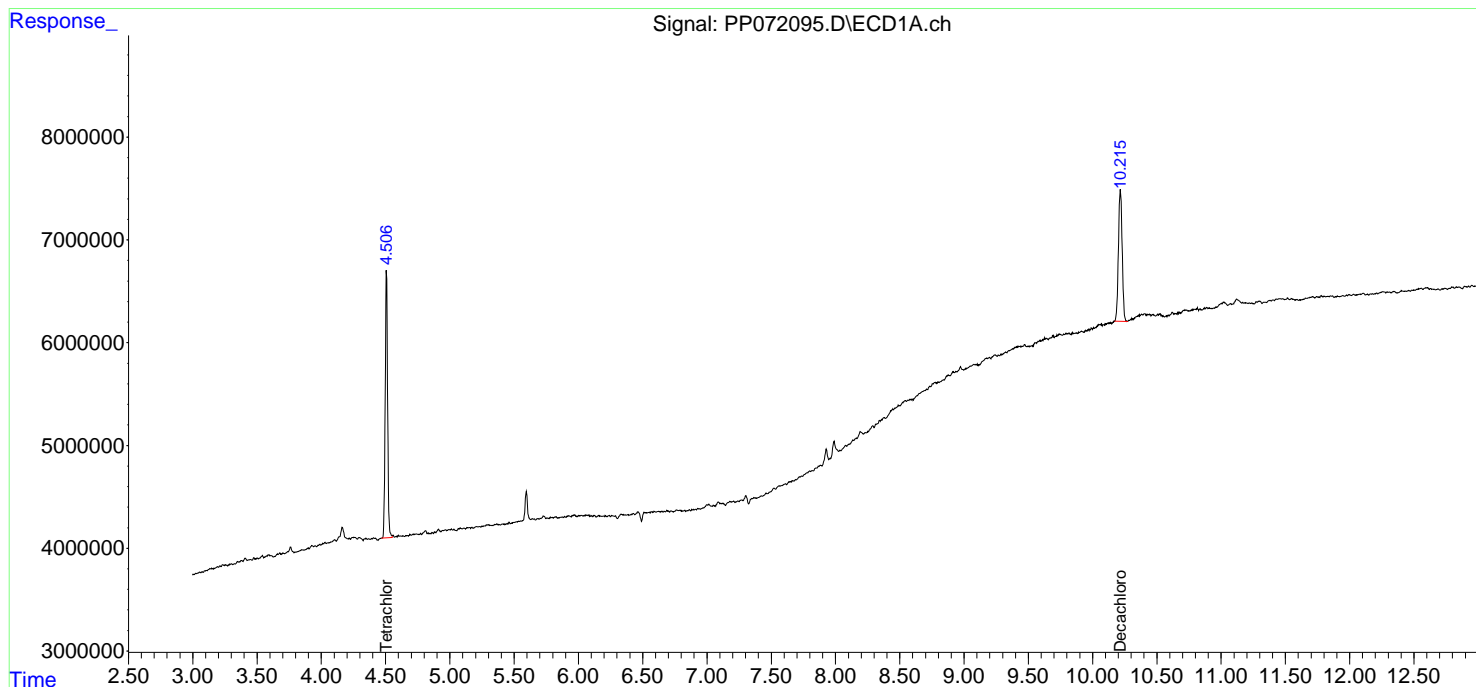
(f)=RT Delta > 1/2 Window (#)=Amounts differ by > 25% (m)=manual int.

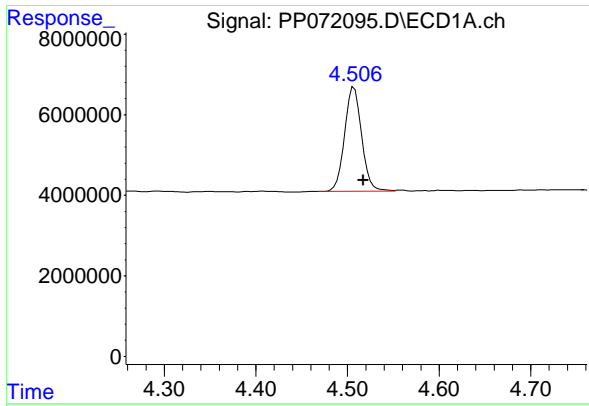
Data Path : Z:\pestpcbsrv\HPCHEM1\ECD_P\Data\PP051425\
Data File : PP072095.D
Signal(s) : Signal #1: ECD1A.ch Signal #2: ECD2B.ch
Acq On : 15 May 2025 10:22
Operator : YP\AJ
Sample : I.BLK
Misc :
ALS Vial : 2 Sample Multiplier: 1

Instrument :
ECD_P
ClientSampleId :
I.BLK

Integration File signal 1: autoint1.e
Integration File signal 2: autoint2.e
Quant Time: May 15 12:09:43 2025
Quant Method : Z:\pestpcbsrv\HPCHEM1\ECD_P\methods\PP042225.M
Quant Title : GC EXTRACTABLES
QLast Update : Wed Apr 23 05:02:06 2025
Response via : Initial Calibration
Integrator: ChemStation

Volume Inj. : 2 µl
Signal #1 Phase : ZB-MR1 Signal #2 Phase: ZB-MR2
Signal #1 Info : 30Mx0.32mmx 0.50µm Signal #2 Info : 30M x 0.32mm x 0.25µm

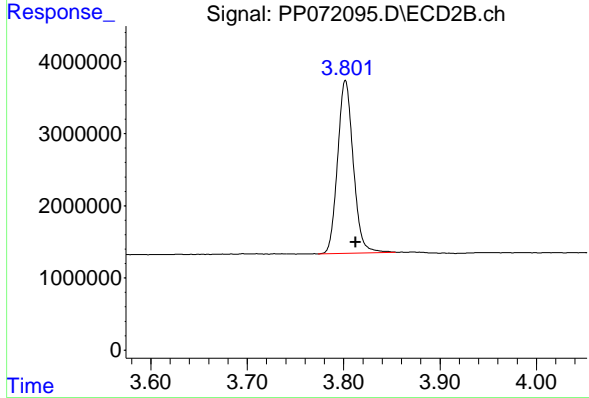




#1 Tetrachloro-m-xylene

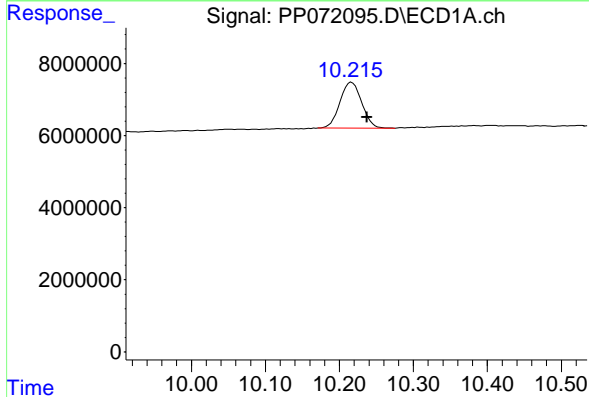
R.T.: 4.507 min
 Delta R.T.: -0.010 min
 Response: 33527146
 Conc: 16.91 ng/ml

Instrument :
 ECD_P
 ClientSampleId :
 I.BLK



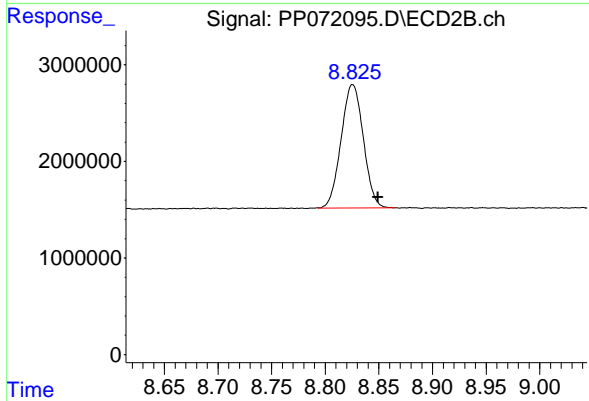
#1 Tetrachloro-m-xylene

R.T.: 3.801 min
 Delta R.T.: -0.011 min
 Response: 27037046
 Conc: 19.19 ng/ml m



#2 Decachlorobiphenyl

R.T.: 10.216 min
 Delta R.T.: -0.021 min
 Response: 25977191
 Conc: 17.94 ng/ml



#2 Decachlorobiphenyl

R.T.: 8.825 min
 Delta R.T.: -0.024 min
 Response: 18413860
 Conc: 21.00 ng/ml m