

Data Path : Z:\pestpcbsrv\HPCHEM1\ECD_P\Data\PP051425\
 Data File : PP072038.D
 Signal(s) : Signal #1: ECD1A.ch Signal #2: ECD2B.ch
 Acq On : 14 May 2025 13:39
 Operator : YP\AJ
 Sample : PB167997BL
 Misc :
 ALS Vial : 7 Sample Multiplier: 1

Instrument :
 ECD_P
 ClientSampleId :
 PB167997BL

Integration File signal 1: autoint1.e
 Integration File signal 2: autoint2.e
 Quant Time: May 15 02:26:13 2025
 Quant Method : Z:\pestpcbsrv\HPCHEM1\ECD_P\methods\PP042225.M
 Quant Title : GC EXTRACTABLES
 QLast Update : Wed Apr 23 05:02:06 2025
 Response via : Initial Calibration
 Integrator: ChemStation

Volume Inj. : 2 µl
 Signal #1 Phase : ZB-MR1 Signal #2 Phase: ZB-MR2
 Signal #1 Info : 30Mx0.32mmx 0.50µ Signal #2 Info : 30M x 0.32mm x 0.25µm

Compound	RT#1	RT#2	Resp#1	Resp#2	ng/ml	ng/ml

System Monitoring Compounds						
1) SA Tetrachlo...	4.507	3.803	39159986	31312953	19.751	22.229
2) SA Decachlor...	10.217	8.825	30561334	21288469	21.106	24.273m

Target Compounds

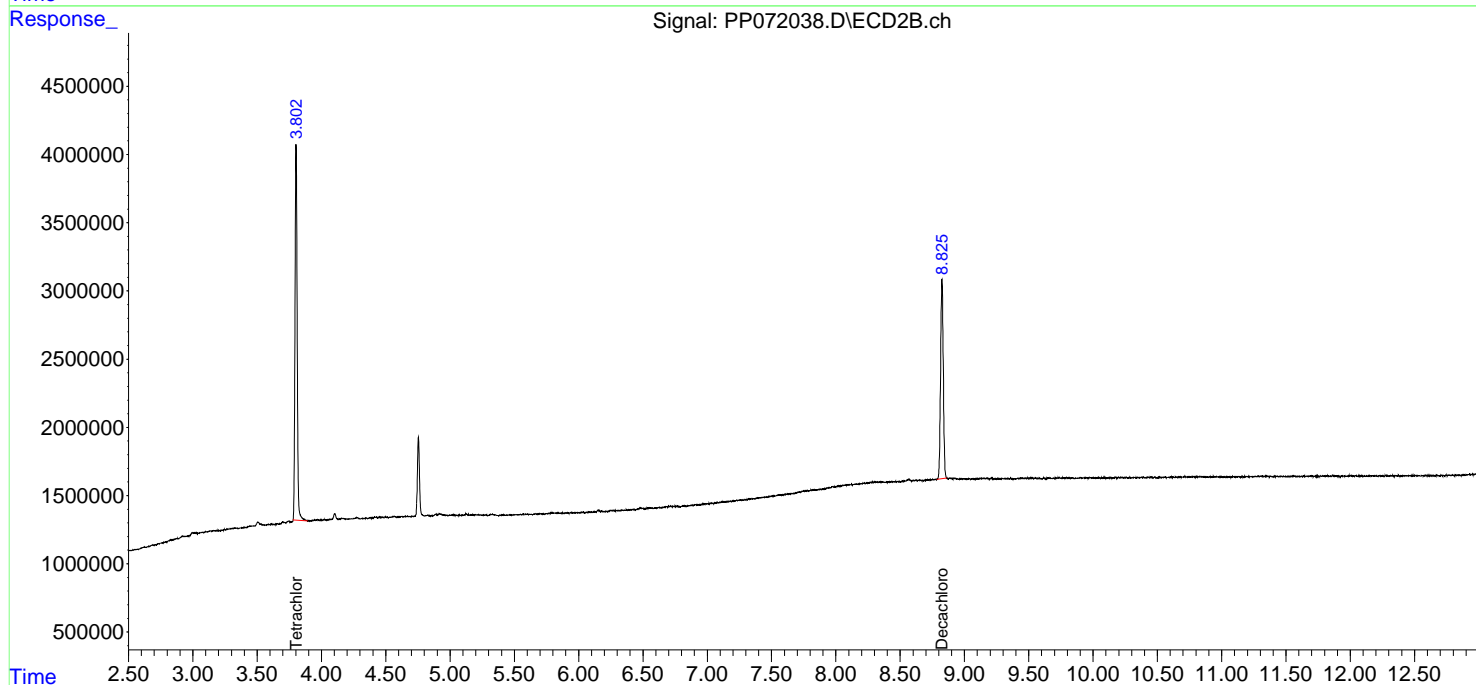
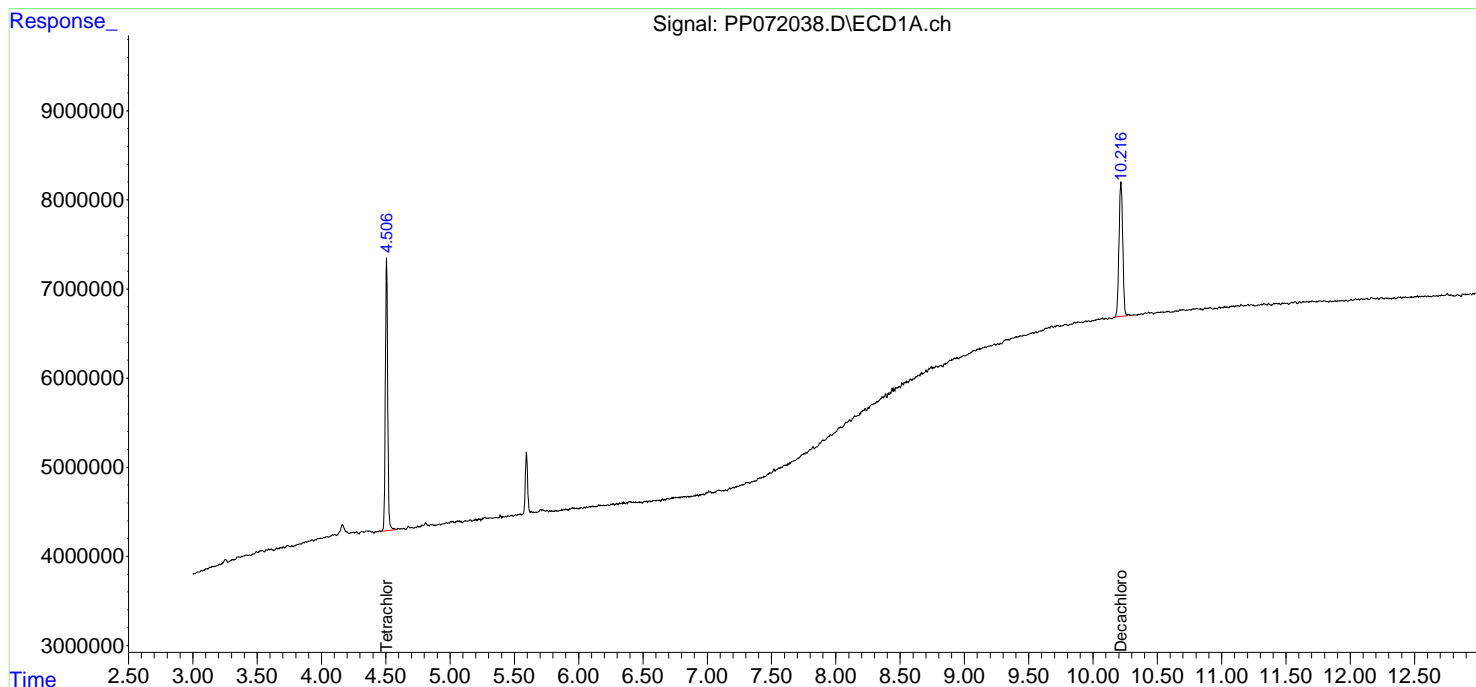
(f)=RT Delta > 1/2 Window (#)=Amounts differ by > 25% (m)=manual int.

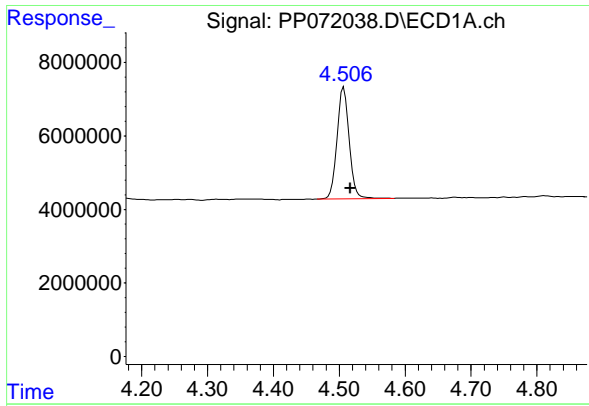
Data Path : Z:\pestpcbsrv\HPCHEM1\ECD_P\Data\PP051425\
Data File : PP072038.D
Signal(s) : Signal #1: ECD1A.ch Signal #2: ECD2B.ch
Acq On : 14 May 2025 13:39
Operator : YP\AJ
Sample : PB167997BL
Misc :
ALS Vial : 7 Sample Multiplier: 1

Instrument :
ECD_P
ClientSampleId :
PB167997BL

Integration File signal 1: autoint1.e
Integration File signal 2: autoint2.e
Quant Time: May 15 02:26:13 2025
Quant Method : Z:\pestpcbsrv\HPCHEM1\ECD_P\methods\PP042225.M
Quant Title : GC EXTRACTABLES
QLast Update : Wed Apr 23 05:02:06 2025
Response via : Initial Calibration
Integrator: ChemStation

Volume Inj. : 2 µl
Signal #1 Phase : ZB-MR1 Signal #2 Phase: ZB-MR2
Signal #1 Info : 30Mx0.32mmx 0.50µm Signal #2 Info : 30M x 0.32mm x 0.25µm

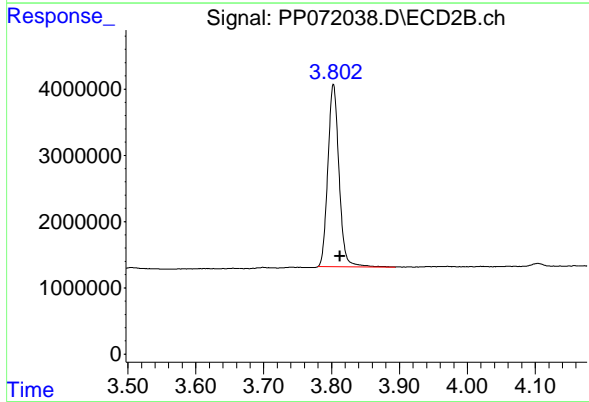




#1 Tetrachloro-m-xylene

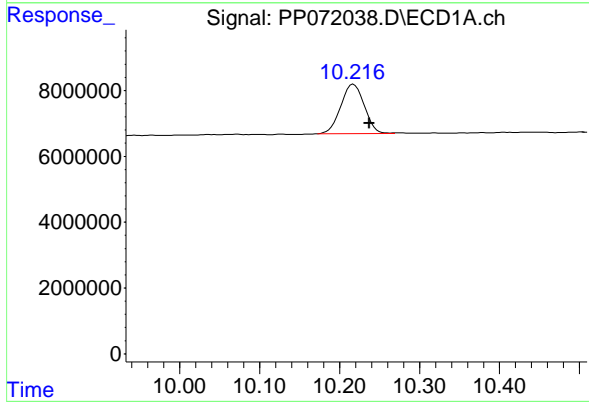
R.T.: 4.507 min
 Delta R.T.: -0.010 min
 Response: 39159986
 Conc: 19.75 ng/ml

Instrument :
 ECD_P
 ClientSampleId :
 PB167997BL



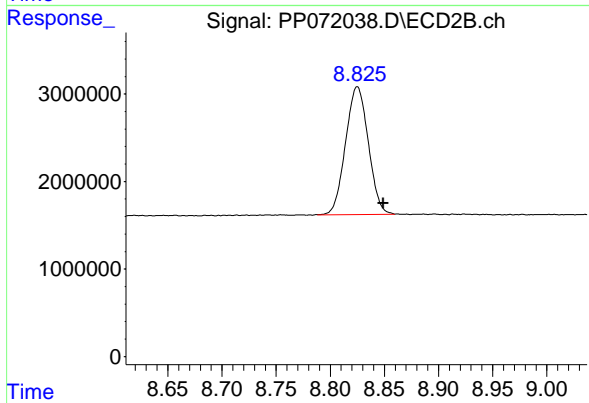
#1 Tetrachloro-m-xylene

R.T.: 3.803 min
 Delta R.T.: -0.010 min
 Response: 31312953
 Conc: 22.23 ng/ml



#2 Decachlorobiphenyl

R.T.: 10.217 min
 Delta R.T.: -0.020 min
 Response: 30561334
 Conc: 21.11 ng/ml



#2 Decachlorobiphenyl

R.T.: 8.825 min
 Delta R.T.: -0.024 min
 Response: 21288469
 Conc: 24.27 ng/ml m