

Data Path : Z:\svoasrv\HPCHEM1\BNA_P\Data\BP051625\
 Data File : BP024652.D
 Acq On : 16 May 2025 11:30
 Operator : RC/JU
 Sample : PB168026BL
 Misc :
 ALS Vial : 3 Sample Multiplier: 1

Instrument :
 BNA_P
 ClientSampleId :
 PB168026BL

Quant Time: May 16 11:50:09 2025
 Quant Method : Z:\svoasrv\HPCHEM1\BNA_P\Methods\8270E-BP051325.M
 Quant Title : ASP BNA STANDARDS FOR 5 POINT CALIBRATION
 QLast Update : Tue May 13 16:21:39 2025
 Response via : Initial Calibration

Compound	R.T.	QIon	Response	Conc	Units	Dev(Min)
Internal Standards						
1) 1,4-Dichlorobenzene-d4	7.663	152	146507	20.000	ng	0.00
21) Naphthalene-d8	10.428	136	552664	20.000	ng	0.00
39) Acenaphthene-d10	14.292	164	320573	20.000	ng	-0.01
64) Phenanthrene-d10	17.086	188	613837	20.000	ng	-0.01
76) Chrysene-d12	21.522	240	714296	20.000	ng	0.00
86) Perylene-d12	24.810	264	864537	20.000	ng	0.00
System Monitoring Compounds						
5) 2-Fluorophenol	5.287	112	1128462	131.740	ng	0.00
7) Phenol-d6	6.852	99	1338849	122.467	ng	0.00
23) Nitrobenzene-d5	8.810	82	832662	76.125	ng	0.00
42) 2,4,6-Tribromophenol	15.810	330	673078	123.850	ng	0.00
45) 2-Fluorobiphenyl	12.898	172	1868282	76.353	ng	0.00
79) Terphenyl-d14	19.816	244	3274879	78.615	ng	0.00

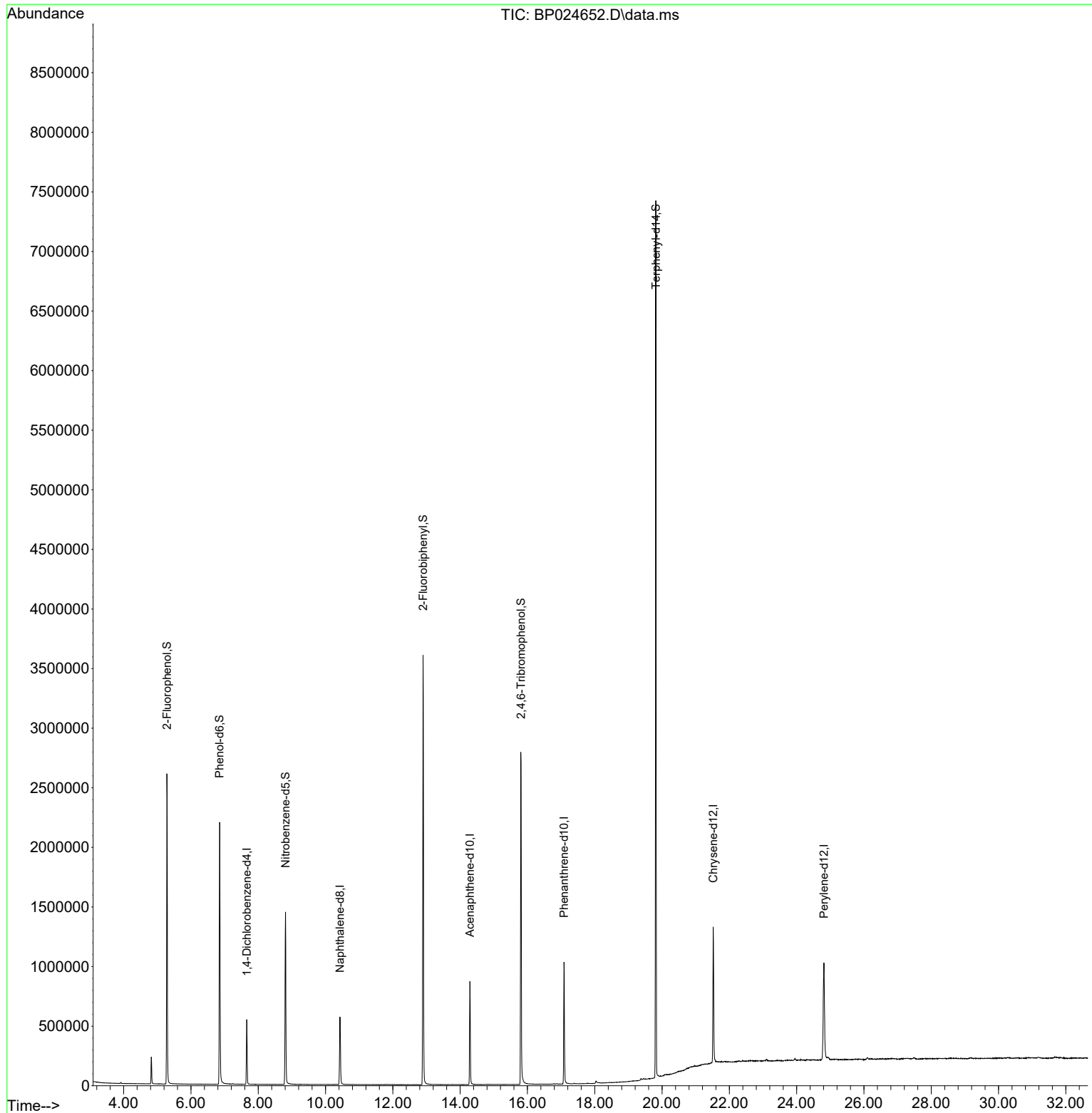
Target Compounds Qvalue

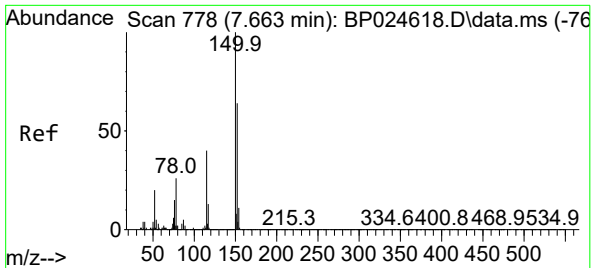
(#) = qualifier out of range (m) = manual integration (+) = signals summed

Data Path : Z:\svoasrv\HPCHEM1\BNA_P\Data\BP051625\
 Data File : BP024652.D
 Acq On : 16 May 2025 11:30
 Operator : RC/JU
 Sample : PB168026BL
 Misc :
 ALS Vial : 3 Sample Multiplier: 1

Instrument :
 BNA_P
 ClientSampleId :
 PB168026BL

Quant Time: May 16 11:50:09 2025
 Quant Method : Z:\svoasrv\HPCHEM1\BNA_P\Methods\8270E-BP051325.M
 Quant Title : ASP BNA STANDARDS FOR 5 POINT CALIBRATION
 QLast Update : Tue May 13 16:21:39 2025
 Response via : Initial Calibration

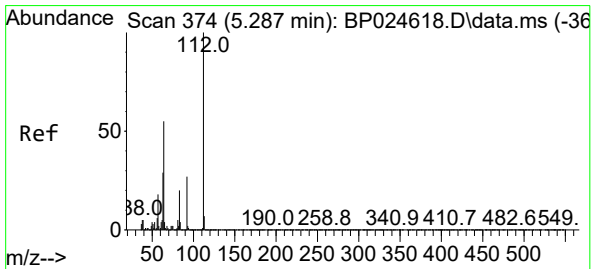
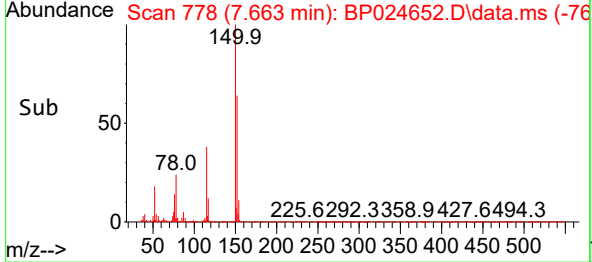
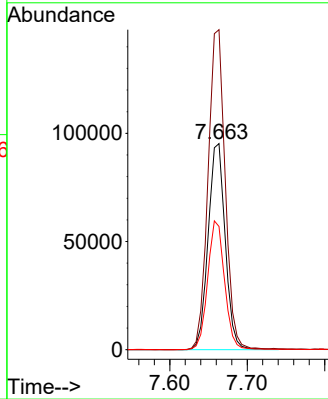
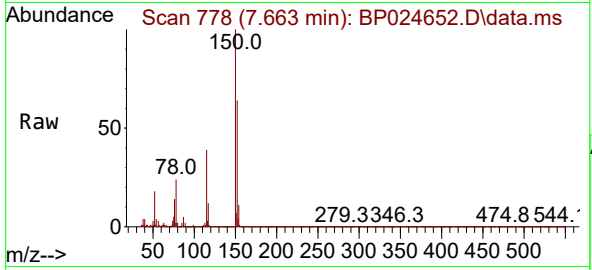




#1
 1,4-Dichlorobenzene-d4
 Concen: 20.000 ng
 RT: 7.663 min Scan# 778
 Delta R.T. 0.000 min
 Lab File: BP024652.D
 Acq: 16 May 2025 11:30

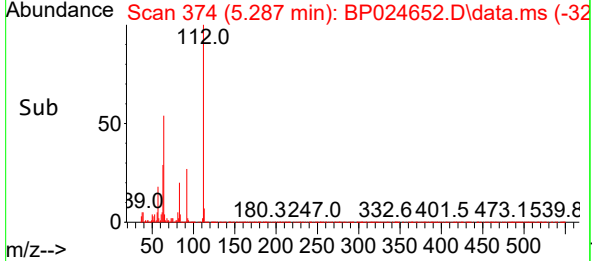
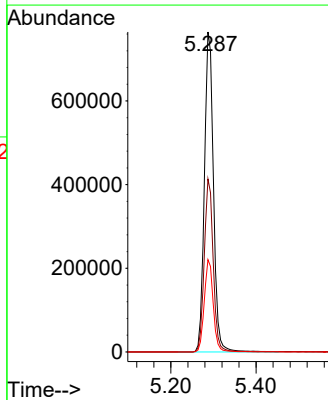
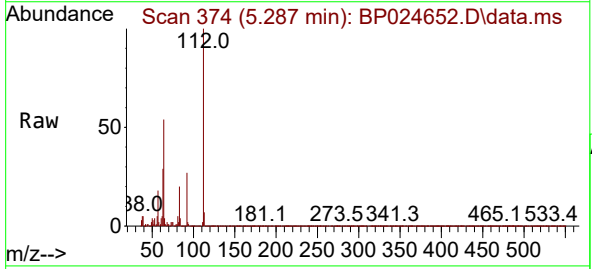
Instrument :
 BNA_P
 ClientSampleId :
 PB168026BL

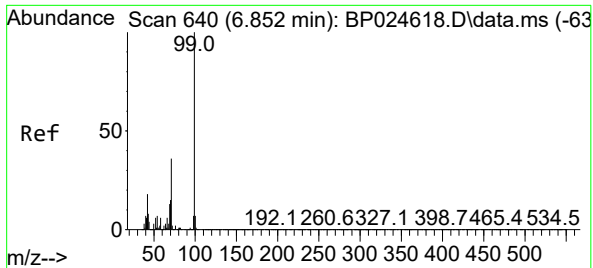
Tgt Ion:152 Resp: 146507
 Ion Ratio Lower Upper
 152 100
 150 155.3 125.9 188.9
 115 59.8 50.1 75.1



#5
 2-Fluorophenol
 Concen: 131.740 ng
 RT: 5.287 min Scan# 374
 Delta R.T. 0.000 min
 Lab File: BP024652.D
 Acq: 16 May 2025 11:30

Tgt Ion:112 Resp: 1128462
 Ion Ratio Lower Upper
 112 100
 64 54.0 44.1 66.1
 63 28.9 23.5 35.3



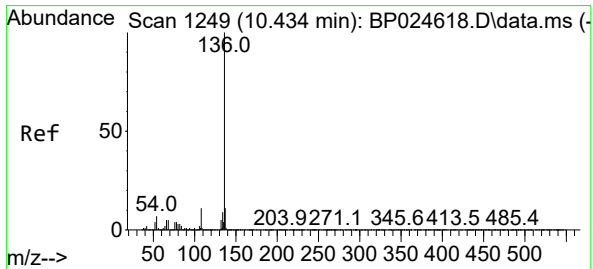
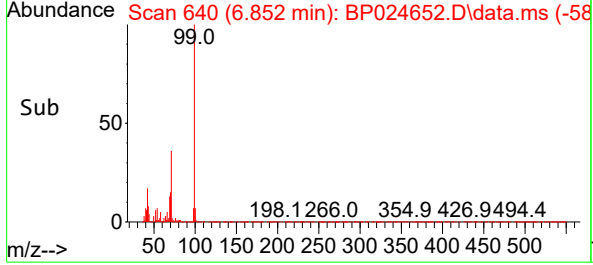
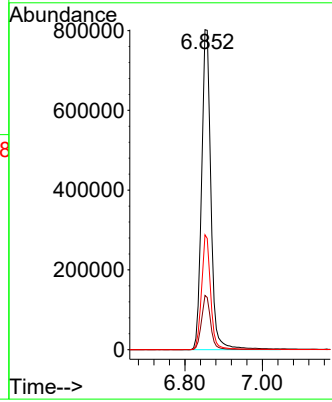
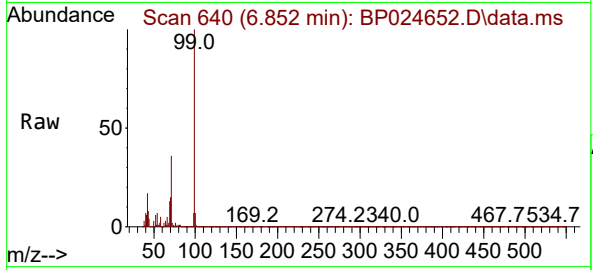


#7
 Phenol-d6
 Concen: 122.467 ng
 RT: 6.852 min Scan# 64
 Delta R.T. 0.000 min
 Lab File: BP024652.D
 Acq: 16 May 2025 11:30

Instrument :
 BNA_P
 ClientSampleId :
 PB168026BL

Tgt Ion: 99 Resp: 1338849

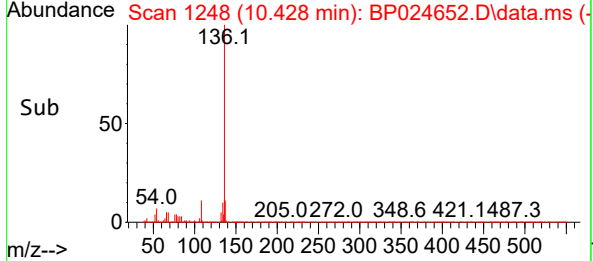
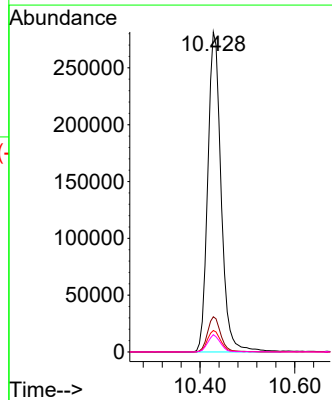
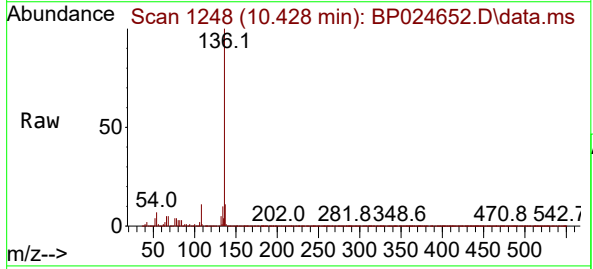
Ion	Ratio	Lower	Upper
99	100		
42	16.9	14.4	21.6
71	35.9	29.2	43.8

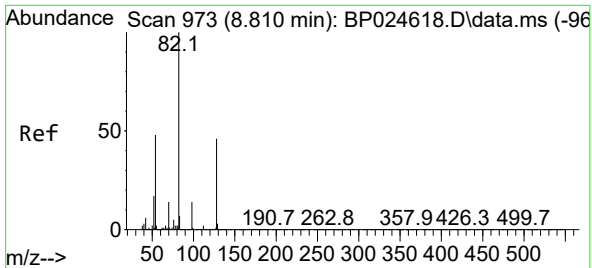


#21
 Naphthalene-d8
 Concen: 20.000 ng
 RT: 10.428 min Scan# 1248
 Delta R.T. -0.006 min
 Lab File: BP024652.D
 Acq: 16 May 2025 11:30

Tgt Ion: 136 Resp: 552664

Ion	Ratio	Lower	Upper
136	100		
137	11.0	8.8	13.2
54	6.7	5.5	8.3
68	5.4	4.2	6.2



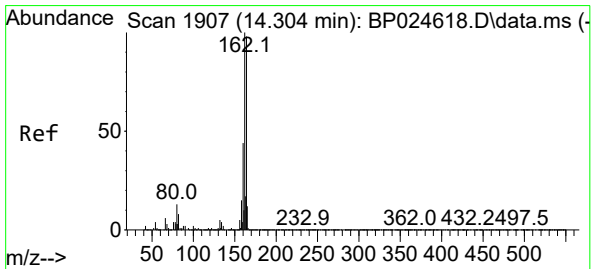
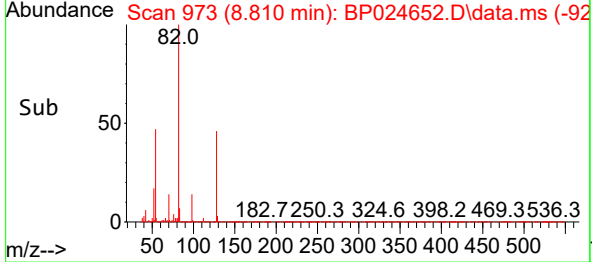
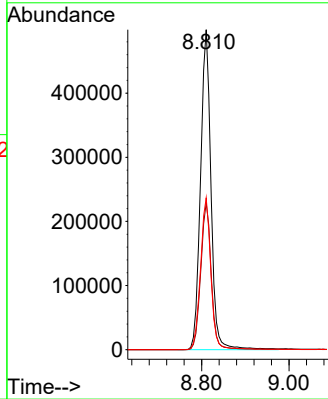
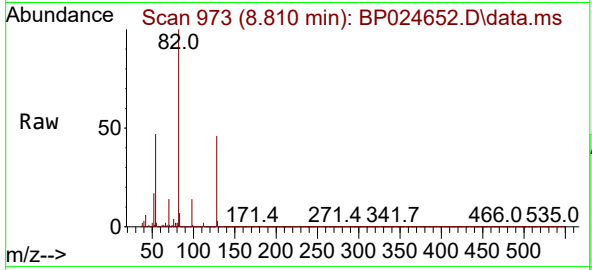


#23
 Nitrobenzene-d5
 Concen: 76.125 ng
 RT: 8.810 min Scan# 91
 Delta R.T. 0.000 min
 Lab File: BP024652.D
 Acq: 16 May 2025 11:30

Instrument :
 BNA_P
 ClientSampleId :
 PB168026BL

Tgt Ion: 82 Resp: 832662

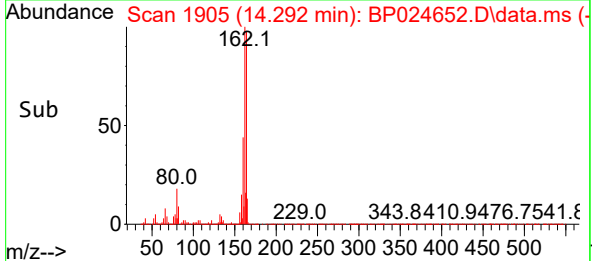
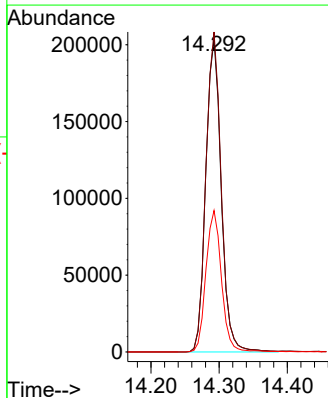
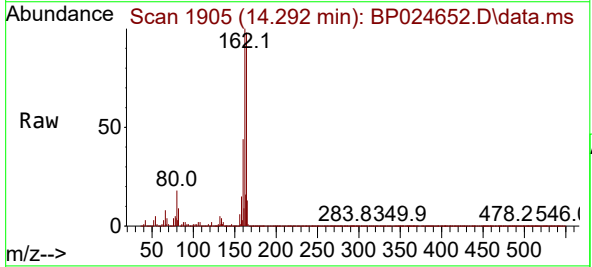
Ion	Ratio	Lower	Upper
82	100		
128	45.9	37.0	55.4
54	47.5	38.7	58.1

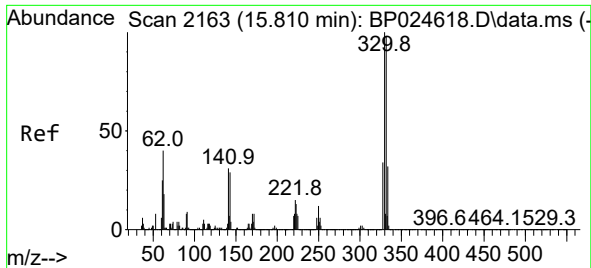


#39
 Acenaphthene-d10
 Concen: 20.000 ng
 RT: 14.292 min Scan# 1905
 Delta R.T. -0.012 min
 Lab File: BP024652.D
 Acq: 16 May 2025 11:30

Tgt Ion: 164 Resp: 320573

Ion	Ratio	Lower	Upper
164	100		
162	102.5	81.8	122.6
160	45.3	36.3	54.5

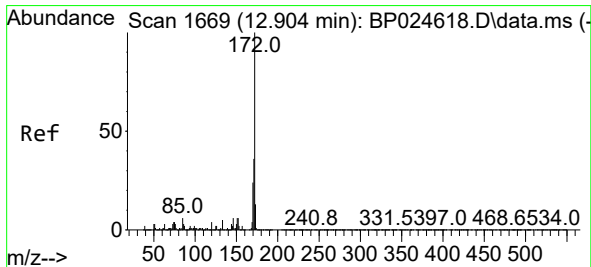
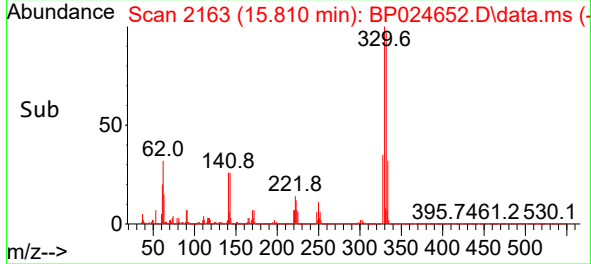
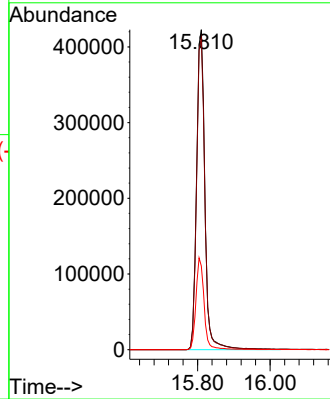
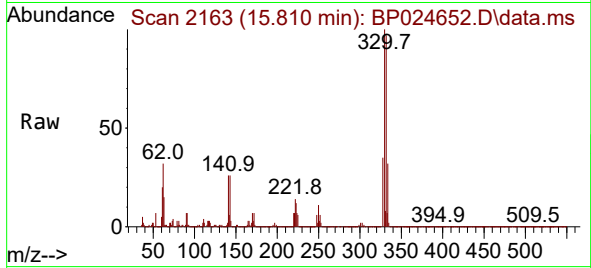




#42
 2,4,6-Tribromophenol
 Concen: 123.850 ng
 RT: 15.810 min Scan# 2163
 Delta R.T. 0.000 min
 Lab File: BP024652.D
 Acq: 16 May 2025 11:30

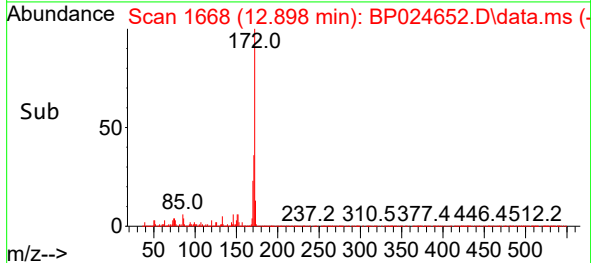
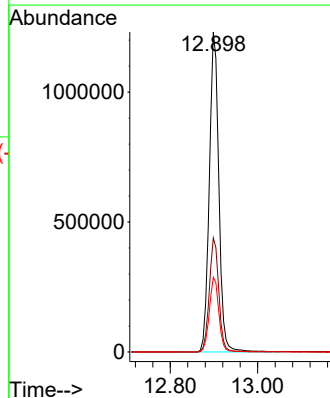
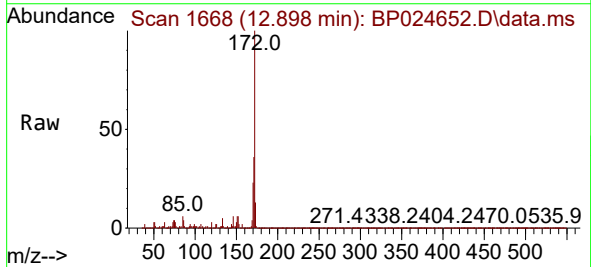
Instrument :
 BNA_P
 ClientSampleId :
 PB168026BL

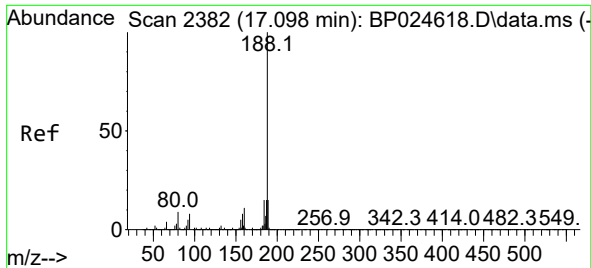
Tgt Ion	Resp	Lower	Upper
330	100		
332	97.4	78.2	117.4
141	28.2	24.3	36.5



#45
 2-Fluorobiphenyl
 Concen: 76.353 ng
 RT: 12.898 min Scan# 1668
 Delta R.T. -0.006 min
 Lab File: BP024652.D
 Acq: 16 May 2025 11:30

Tgt Ion	Resp	Lower	Upper
172	100		
171	35.6	28.8	43.2
170	23.3	18.8	28.2



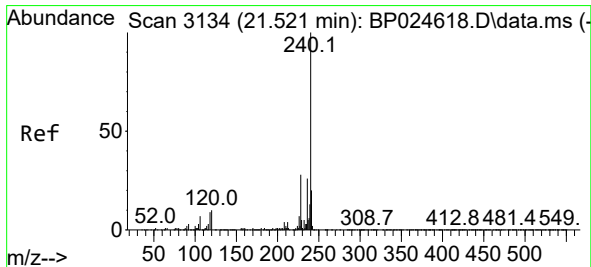
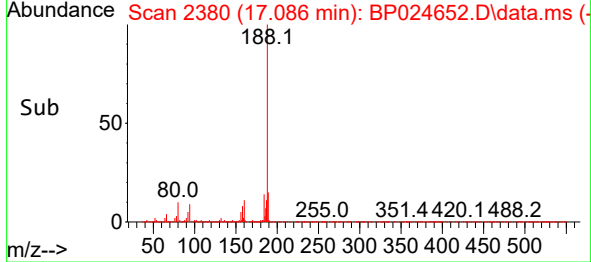
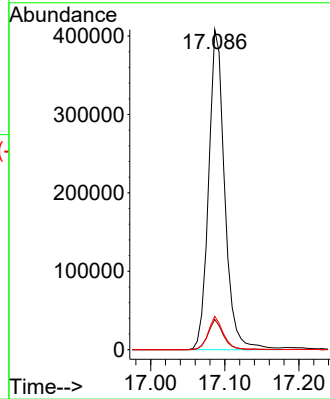
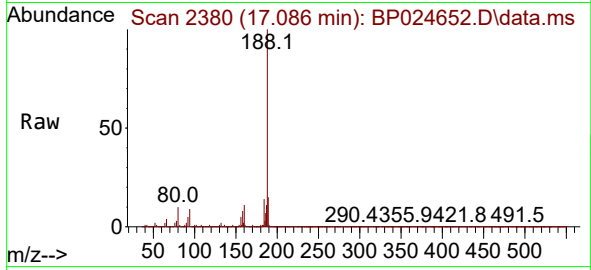


#64
 Phenanthrene-d10
 Concen: 20.000 ng
 RT: 17.086 min Scan# 21
 Delta R.T. -0.012 min
 Lab File: BP024652.D
 Acq: 16 May 2025 11:30

Instrument :
 BNA_P
 ClientSampleId :
 PB168026BL

Tgt Ion:188 Resp: 613837

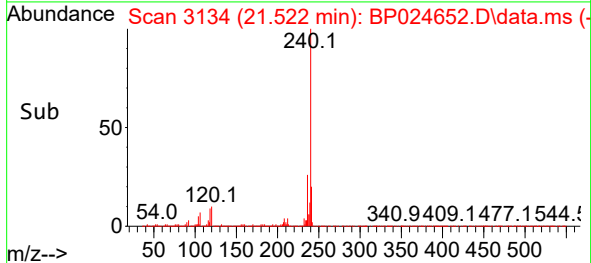
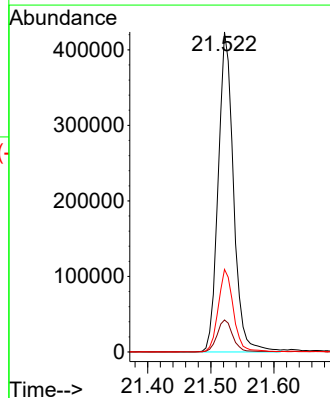
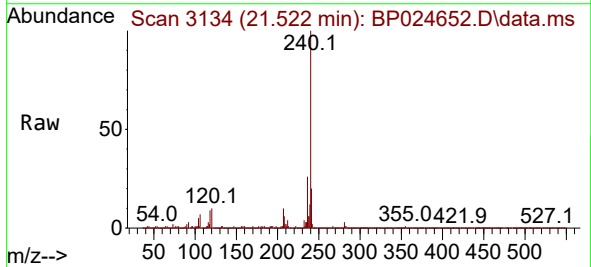
Ion	Ratio	Lower	Upper
188	100		
94	9.4	6.5	9.7
80	10.4	7.3	10.9

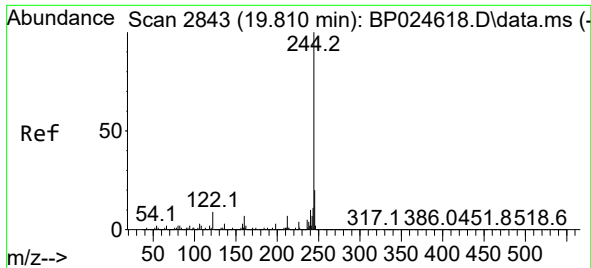


#76
 Chrysene-d12
 Concen: 20.000 ng
 RT: 21.522 min Scan# 3134
 Delta R.T. 0.000 min
 Lab File: BP024652.D
 Acq: 16 May 2025 11:30

Tgt Ion:240 Resp: 714296

Ion	Ratio	Lower	Upper
240	100		
120	10.0	7.8	11.6
236	25.8	20.6	31.0



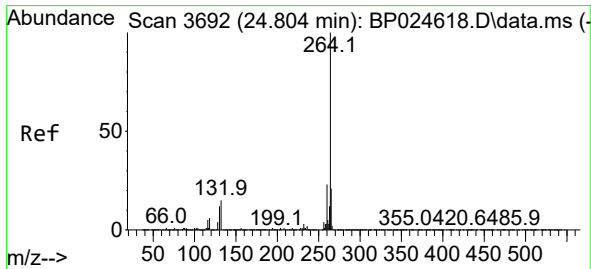
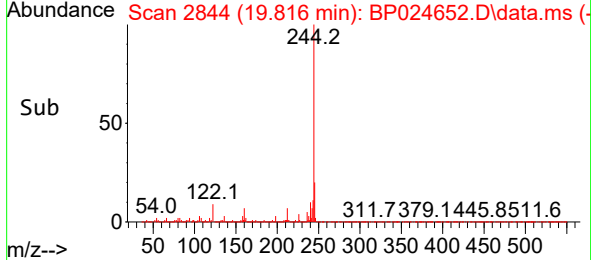
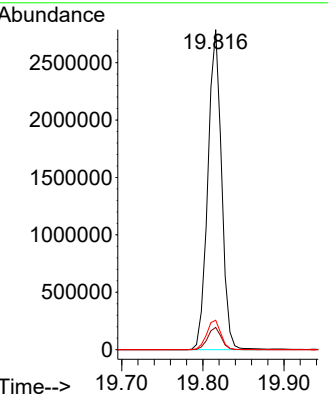
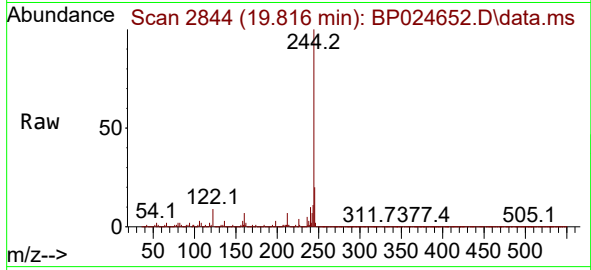


#79
 Terphenyl-d14
 Concen: 78.615 ng
 RT: 19.816 min Scan# 21
 Delta R.T. 0.006 min
 Lab File: BP024652.D
 Acq: 16 May 2025 11:30

Instrument :
 BNA_P
 Client Sample Id :
 PB168026BL

Tgt Ion:244 Resp: 3274879

Ion	Ratio	Lower	Upper
244	100		
212	6.9	5.5	8.3
122	9.2	7.4	11.0



#86
 Perylene-d12
 Concen: 20.000 ng
 RT: 24.810 min Scan# 3693
 Delta R.T. 0.006 min
 Lab File: BP024652.D
 Acq: 16 May 2025 11:30

Tgt Ion:264 Resp: 864537

Ion	Ratio	Lower	Upper
264	100		
260	23.7	18.7	28.1
265	21.4	17.0	25.6

