

Data Path : Z:\pestpcbsrv\HPCHEM1\ECD_0\Data\P0051525\
 Data File : PO111061.D
 Signal(s) : Signal #1: ECD1A.ch Signal #2: ECD2B.ch
 Acq On : 14 May 2025 18:15
 Operator : YP/AJ
 Sample : AR1660ICC250
 Misc :
 ALS Vial : 6 Sample Multiplier: 1

Instrument :
 ECD_0
 ClientSampleId :
 AR1660ICC250

Integration File signal 1: autoint1.e
 Integration File signal 2: autoint2.e
 Quant Time: May 14 18:23:06 2025
 Quant Method : Z:\pestpcbsrv\HPCHEM1\ECD_0\methods\P0051525.M
 Quant Title : GC EXTRACTABLES
 QLast Update : Wed May 14 18:22:49 2025
 Response via : Initial Calibration
 Integrator: ChemStation

Volume Inj. : 2 µl
 Signal #1 Phase : ZB-MR1 Signal #2 Phase: ZB-MR2
 Signal #1 Info : 30Mx0.32mmx 0.50µ Signal #2 Info : 30M x 0.32mm x 0.25µm

Compound	RT#1	RT#2	Resp#1	Resp#2	ng/ml	ng/ml

System Monitoring Compounds						
1) SA Tetrachlo...	3.682	3.679	154.2E6	141.0E6	26.005	25.413
2) SA Decachlor...	8.724	8.675	137.9E6	49563687	26.929	27.014
Target Compounds						
3) L1 AR-1016-1	4.772	4.758	60421232	50283802	272.203	267.606
4) L1 AR-1016-2	4.791	4.777	85104928	73415717	268.958	266.572
5) L1 AR-1016-3	4.848	4.952	59166640	38855618	275.155	266.661
6) L1 AR-1016-4	4.968	4.994	46963647	32409017	271.015	274.714
7) L1 AR-1016-5	5.226	5.207	46806652	40476870	266.282	265.951
31) L7 AR-1260-1	6.265	6.237	82969435	66195316	274.520	269.290
32) L7 AR-1260-2	6.455	6.426	102.9E6	77672896	272.015	267.303
33) L7 AR-1260-3	6.822	6.578	93348146	75817208	271.913	271.635
34) L7 AR-1260-4	7.082	7.049	76451534	53814049	276.083	271.405
35) L7 AR-1260-5	7.324	7.290	190.0E6	119.8E6	264.350	261.412

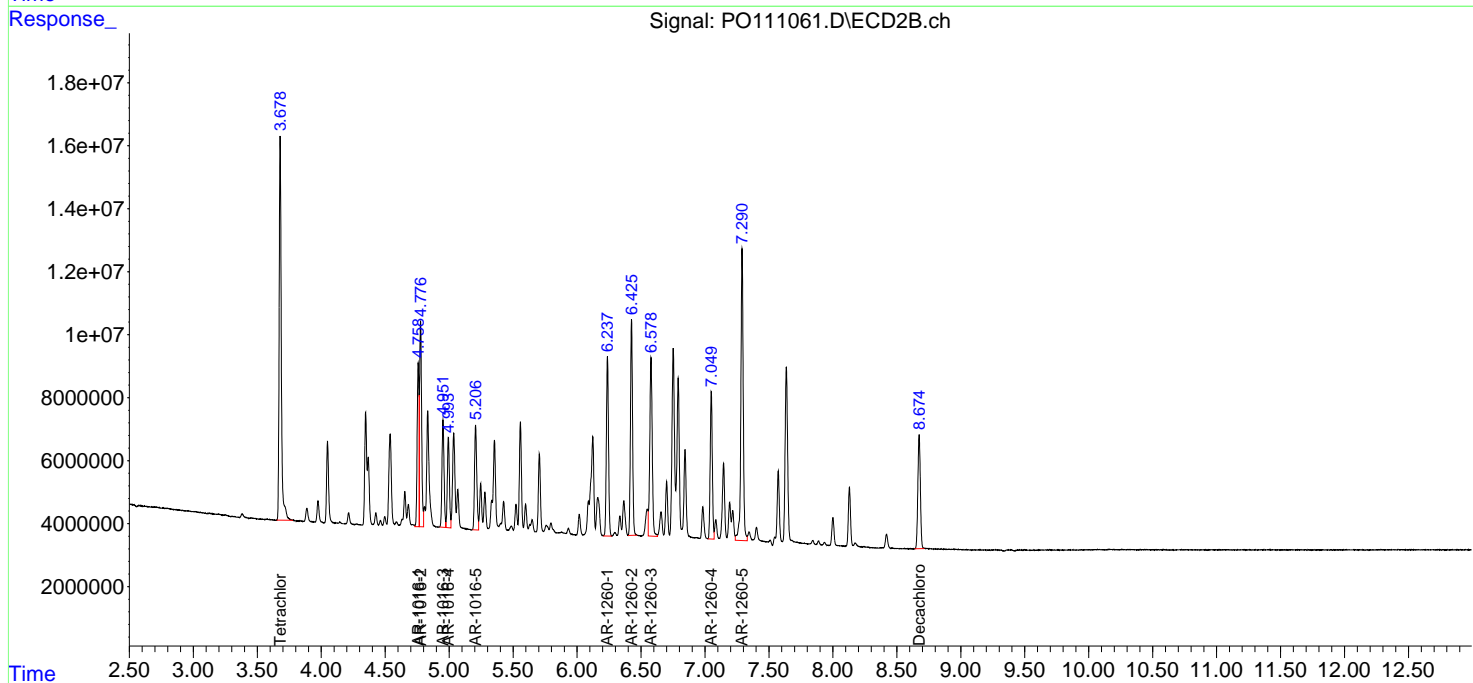
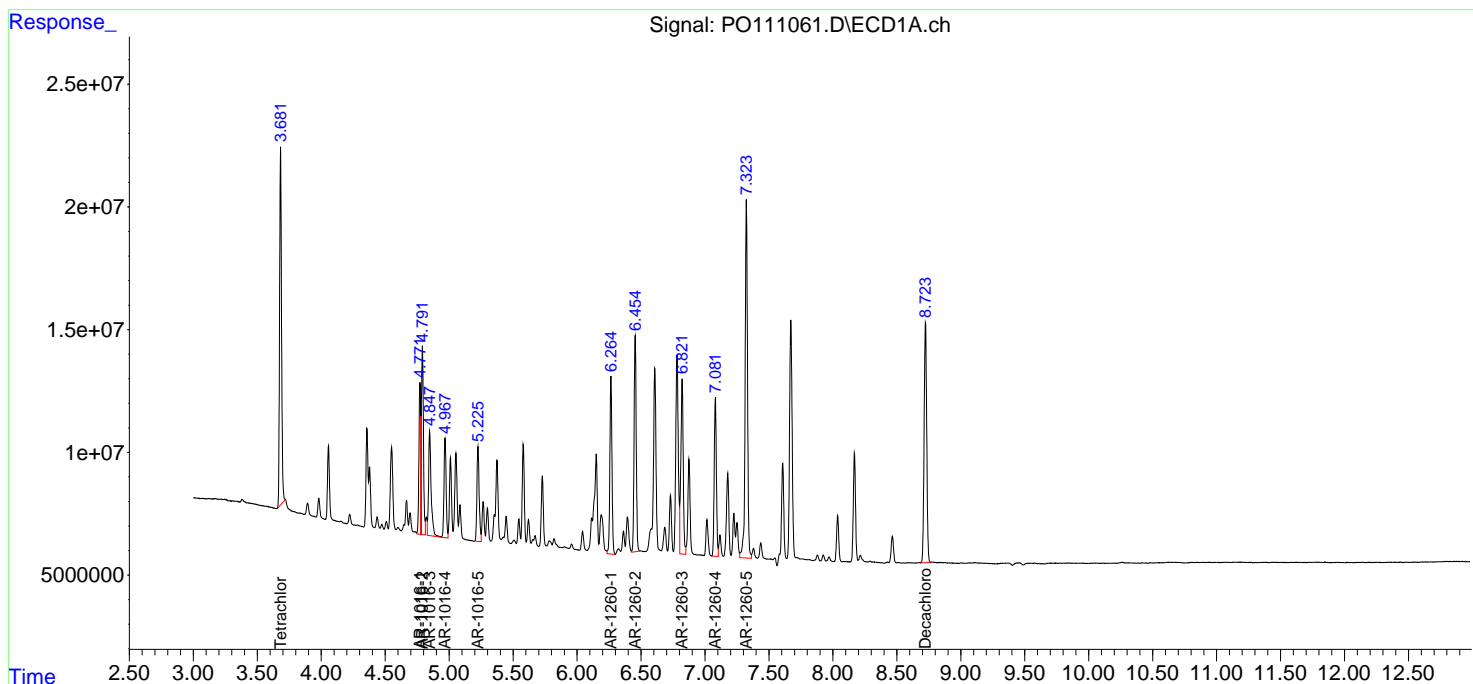
(f)=RT Delta > 1/2 Window (#)=Amounts differ by > 25% (m)=manual int.

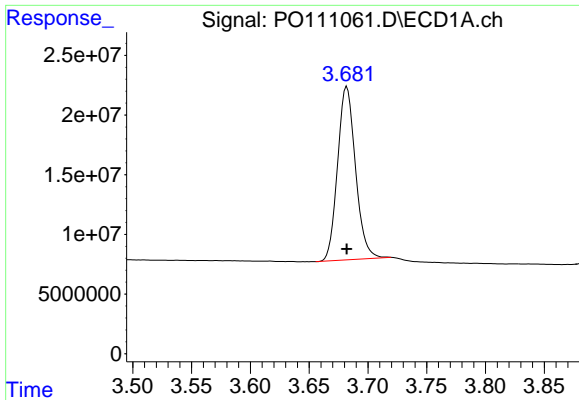
Data Path : Z:\pestpcbsrv\HPCHEM1\ECD_O\Data\P0051525\
 Data File : P0111061.D
 Signal(s) : Signal #1: ECD1A.ch Signal #2: ECD2B.ch
 Acq On : 14 May 2025 18:15
 Operator : YP/AJ
 Sample : AR1660ICC250
 Misc :
 ALS Vial : 6 Sample Multiplier: 1

Instrument :
 ECD_O
 ClientSampleId :
 AR1660ICC250

Integration File signal 1: autoint1.e
 Integration File signal 2: autoint2.e
 Quant Time: May 14 18:23:06 2025
 Quant Method : Z:\pestpcbsrv\HPCHEM1\ECD_O\methods\P0051525.M
 Quant Title : GC EXTRACTABLES
 QLast Update : Wed May 14 18:22:49 2025
 Response via : Initial Calibration
 Integrator: ChemStation

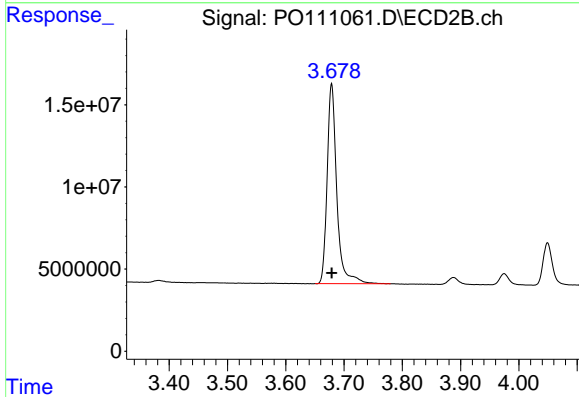
Volume Inj. : 2 µl
 Signal #1 Phase : ZB-MR1 Signal #2 Phase: ZB-MR2
 Signal #1 Info : 30Mx0.32mmx 0.50µ Signal #2 Info : 30M x 0.32mm x 0.25µm



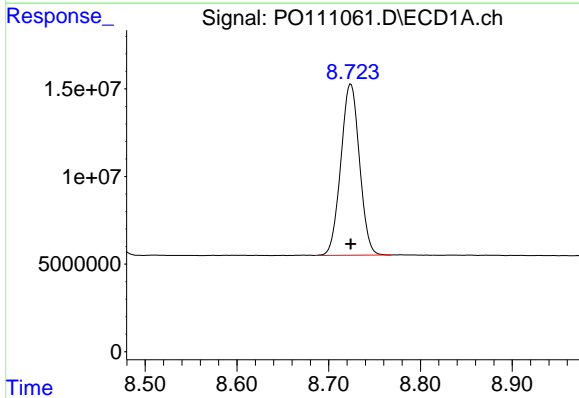


#1 Tetrachloro-m-xylene
 R.T.: 3.682 min
 Delta R.T.: 0.000 min
 Response: 154194096
 Conc: 26.01 ng/ml

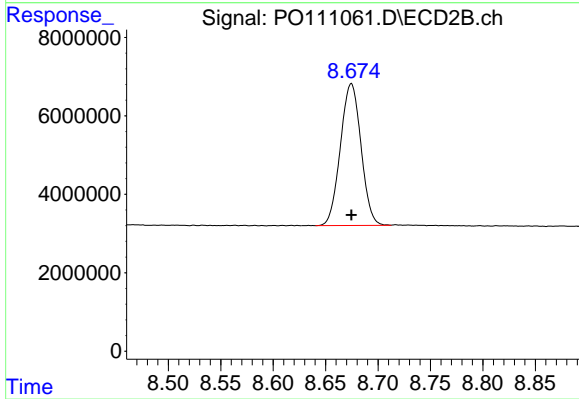
Instrument :
 ECD_O
 ClientSampleId :
 AR1660ICC250



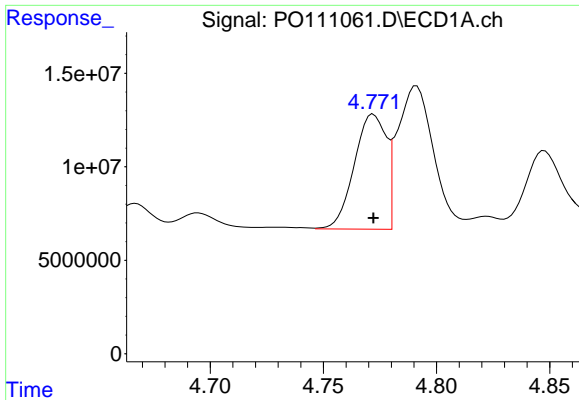
#1 Tetrachloro-m-xylene
 R.T.: 3.679 min
 Delta R.T.: 0.000 min
 Response: 141033210
 Conc: 25.41 ng/ml



#2 Decachlorobiphenyl
 R.T.: 8.724 min
 Delta R.T.: 0.000 min
 Response: 137877946
 Conc: 26.93 ng/ml



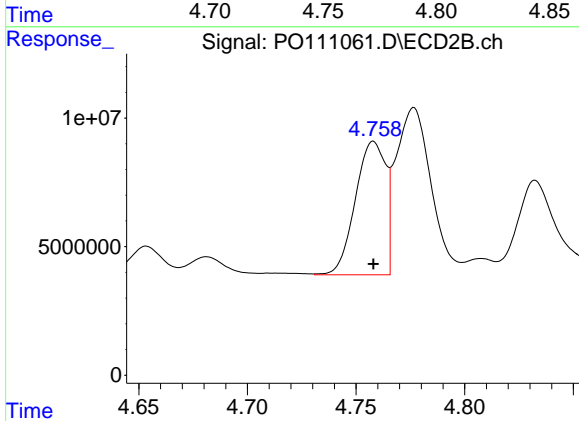
#2 Decachlorobiphenyl
 R.T.: 8.675 min
 Delta R.T.: 0.000 min
 Response: 49563687
 Conc: 27.01 ng/ml



#3 AR-1016-1

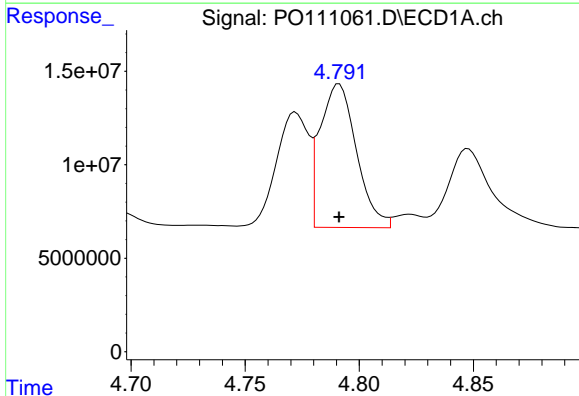
R.T.: 4.772 min
 Delta R.T.: 0.000 min
 Response: 60421232
 Conc: 272.20 ng/ml

Instrument :
 ECD_O
 ClientSampleId :
 AR1660ICC250



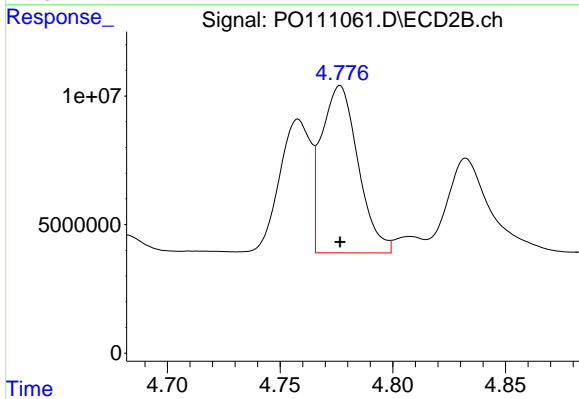
#3 AR-1016-1

R.T.: 4.758 min
 Delta R.T.: 0.000 min
 Response: 50283802
 Conc: 267.61 ng/ml



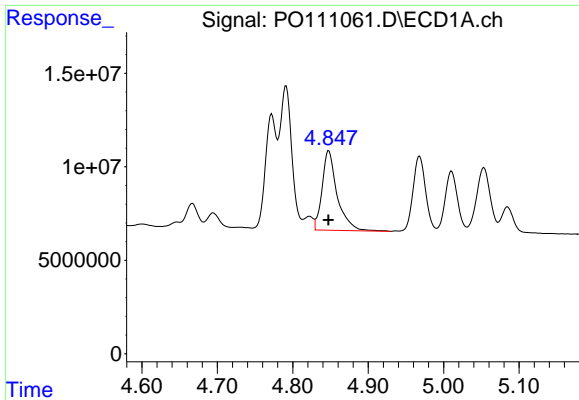
#4 AR-1016-2

R.T.: 4.791 min
 Delta R.T.: 0.000 min
 Response: 85104928
 Conc: 268.96 ng/ml



#4 AR-1016-2

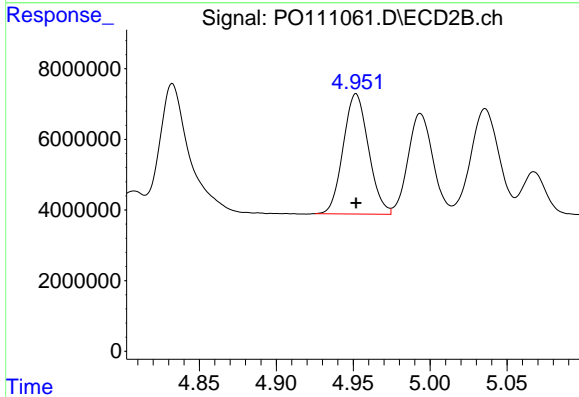
R.T.: 4.777 min
 Delta R.T.: 0.000 min
 Response: 73415717
 Conc: 266.57 ng/ml



#5 AR-1016-3

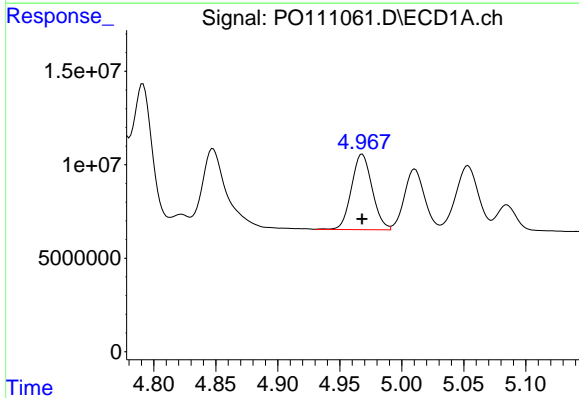
R.T.: 4.848 min
 Delta R.T.: 0.000 min
 Response: 59166640
 Conc: 275.15 ng/ml

Instrument :
 ECD_O
 ClientSampleId :
 AR1660ICC250



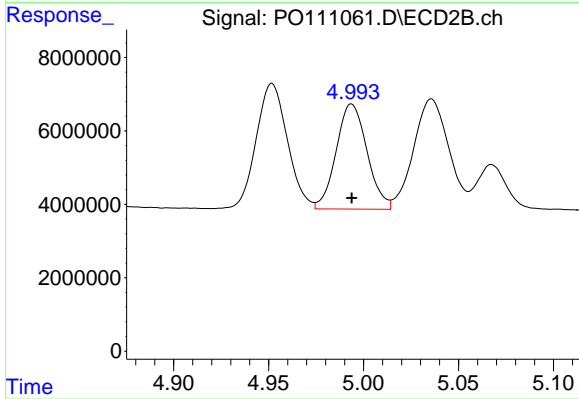
#5 AR-1016-3

R.T.: 4.952 min
 Delta R.T.: 0.000 min
 Response: 38855618
 Conc: 266.66 ng/ml



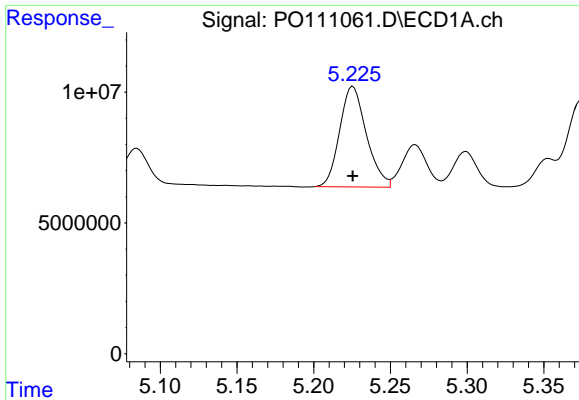
#6 AR-1016-4

R.T.: 4.968 min
 Delta R.T.: 0.000 min
 Response: 46963647
 Conc: 271.02 ng/ml



#6 AR-1016-4

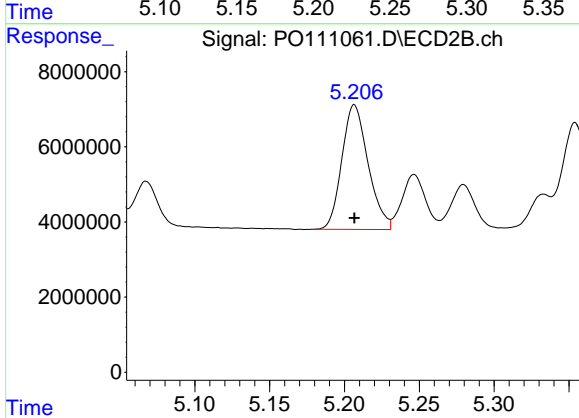
R.T.: 4.994 min
 Delta R.T.: 0.000 min
 Response: 32409017
 Conc: 274.71 ng/ml



#7 AR-1016-5

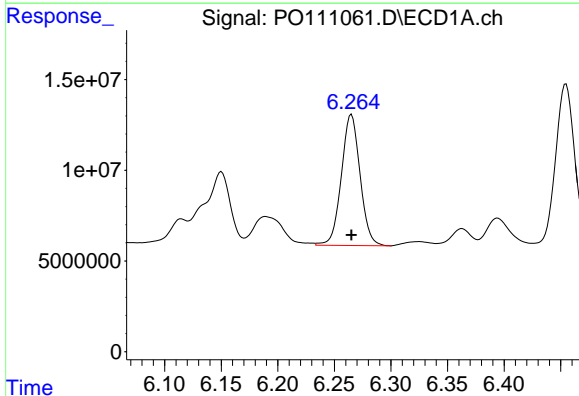
R.T.: 5.226 min
 Delta R.T.: 0.000 min
 Response: 46806652
 Conc: 266.28 ng/ml

Instrument :
 ECD_O
 ClientSampleId :
 AR1660ICC250



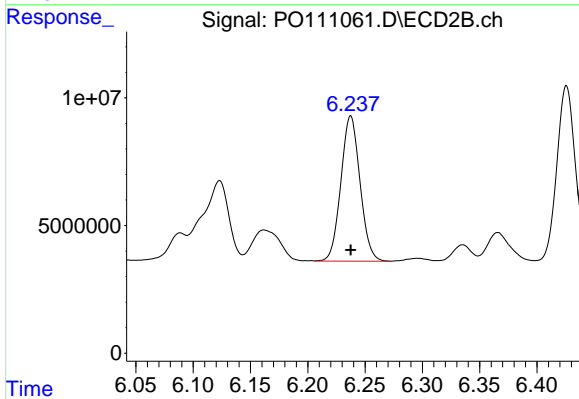
#7 AR-1016-5

R.T.: 5.207 min
 Delta R.T.: 0.000 min
 Response: 40476870
 Conc: 265.95 ng/ml



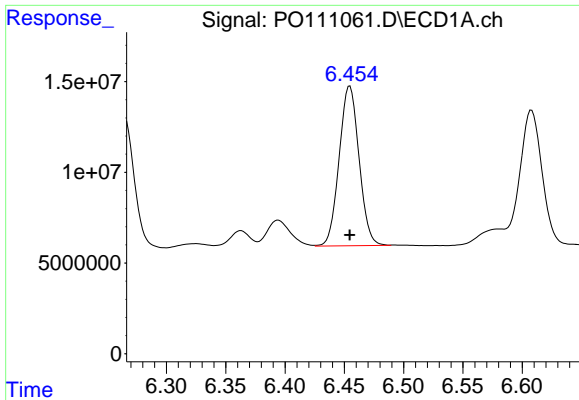
#31 AR-1260-1

R.T.: 6.265 min
 Delta R.T.: 0.000 min
 Response: 82969435
 Conc: 274.52 ng/ml



#31 AR-1260-1

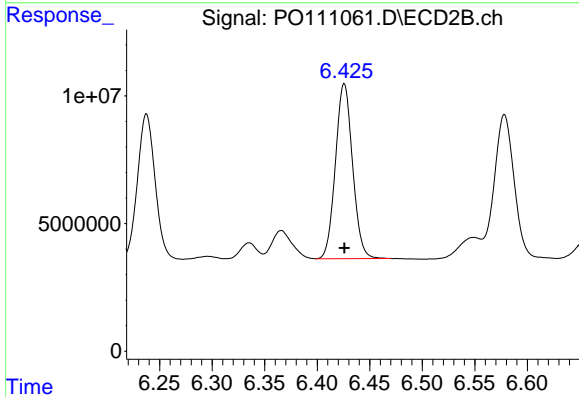
R.T.: 6.237 min
 Delta R.T.: 0.000 min
 Response: 66195316
 Conc: 269.29 ng/ml



#32 AR-1260-2

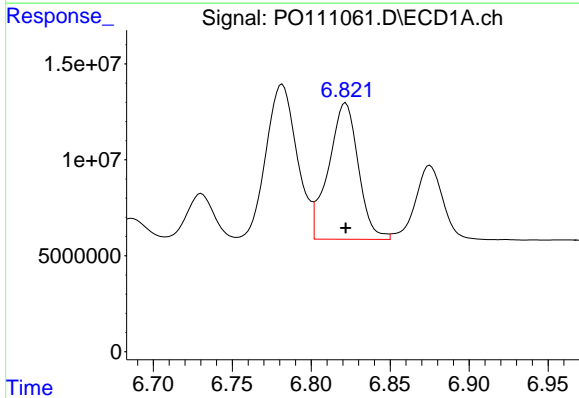
R.T.: 6.455 min
 Delta R.T.: 0.000 min
 Response: 102884248
 Conc: 272.02 ng/ml

Instrument :
 ECD_O
 ClientSampleId :
 AR1660ICC250



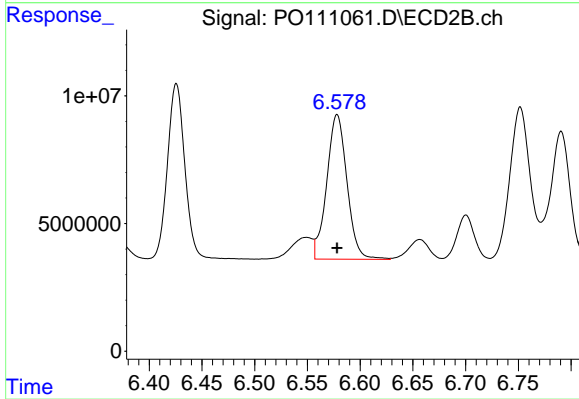
#32 AR-1260-2

R.T.: 6.426 min
 Delta R.T.: 0.000 min
 Response: 77672896
 Conc: 267.30 ng/ml



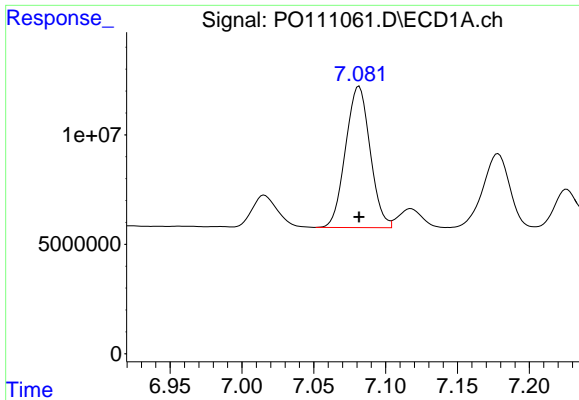
#33 AR-1260-3

R.T.: 6.822 min
 Delta R.T.: 0.000 min
 Response: 93348146
 Conc: 271.91 ng/ml



#33 AR-1260-3

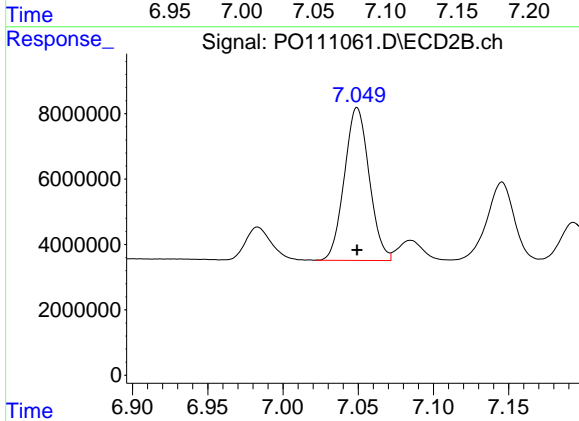
R.T.: 6.578 min
 Delta R.T.: 0.000 min
 Response: 75817208
 Conc: 271.64 ng/ml



#34 AR-1260-4

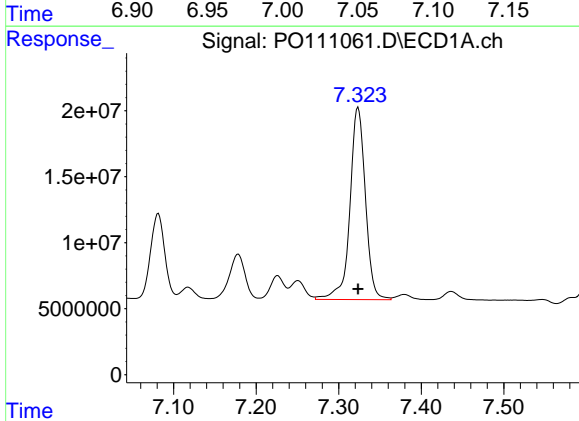
R.T.: 7.082 min
 Delta R.T.: 0.000 min
 Response: 76451534
 Conc: 276.08 ng/ml

Instrument :
 ECD_O
 ClientSampleId :
 AR1660ICC250



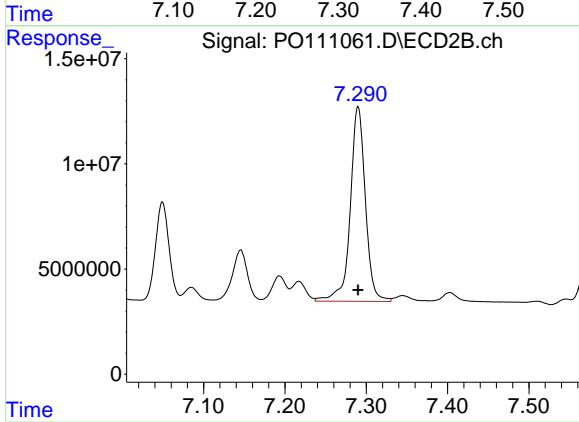
#34 AR-1260-4

R.T.: 7.049 min
 Delta R.T.: 0.000 min
 Response: 53814049
 Conc: 271.40 ng/ml



#35 AR-1260-5

R.T.: 7.324 min
 Delta R.T.: 0.000 min
 Response: 190029205
 Conc: 264.35 ng/ml



#35 AR-1260-5

R.T.: 7.290 min
 Delta R.T.: 0.000 min
 Response: 119838191
 Conc: 261.41 ng/ml