

LB135830

=====  
Test results Aquakem 7.2AQ1 Page: 1

CHEMTECH CONSULTING GROUP INC  
284 Sheffield Street, Mountainside, NJ 07092

Reviewed by : RM Instrument ID : Konelab

5/19/2025 16:48

-----  
Test: TKN-NH3

| Sample Id    | Result | Dil. 1 + | Response | Errors |
|--------------|--------|----------|----------|--------|
| ICV1         | 4.937  | 0.0      | 1.049    |        |
| ICB1         | 0.057  | 0.0      | 0.023    |        |
| CCV1         | 4.969  | 0.0      | 1.056    |        |
| CCB1         | 0.049  | 0.0      | 0.021    |        |
| RL CHECK     | 0.497  | 0.0      | 0.116    |        |
| PB168059BL   | 0.052  | 0.0      | 0.022    |        |
| PB168059BS   | 4.896  | 0.0      | 1.040    |        |
| Q2033-01     | 11.513 | 0.0      | 2.432    |        |
| Q2065-01     | 3.989  | 0.0      | 0.850    |        |
| Q2067-01     | 0.921  | 0.0      | 0.205    |        |
| Q2067-01DUP  | 0.929  | 0.0      | 0.206    |        |
| Q2067-01MS   | 5.733  | 0.0      | 1.216    |        |
| Q2067-01MSD  | 5.428  | 0.0      | 1.152    |        |
| Q2068-03     | 8.031  | 0.0      | 1.700    |        |
| CCV2         | 5.108  | 0.0      | 1.085    |        |
| CCB2         | 0.070  | 0.0      | 0.026    |        |
| Q2033-01DLX2 | 6.203  | 0.0      | 1.315    |        |
| CCV3         | 5.147  | 0.0      | 1.093    |        |
| CCB3         | 0.064  | 0.0      | 0.025    |        |

99% CSO-1607  
05/19/2025  
RM  
Test limit high

N 19  
Mean 3.610  
SD 3.2806  
CV% 90.87

Aquakem v. 7.2AQ1

Results from time period:

Mon May 19 14:07:42 2025

Mon May 19 16:47:37 2025

| Sample Id    | Sam/Ctr/c | Test short r | Test type | Result  | Result unit | Result date and time | Stat |
|--------------|-----------|--------------|-----------|---------|-------------|----------------------|------|
| 0.0PPM       | A         | TKN-NH3      | P         | 0.0592  | mg/l        | 5/19/2025 14:07:42   |      |
| 0.5PPM       | A         | TKN-NH3      | P         | 0.5606  | mg/l        | 5/19/2025 14:07:43   |      |
| 1.0PPM       | A         | TKN-NH3      | P         | 0.9865  | mg/l        | 5/19/2025 14:07:44   |      |
| 2.5PPM       | A         | TKN-NH3      | P         | 2.4514  | mg/l        | 5/19/2025 14:07:45   |      |
| 5.0PPM       | A         | TKN-NH3      | P         | 4.8906  | mg/l        | 5/19/2025 14:07:46   |      |
| 6.7PPM       | A         | TKN-NH3      | P         | 6.6264  | mg/l        | 5/19/2025 14:07:47   |      |
| 10.0PPM      | A         | TKN-NH3      | P         | 10.092  | mg/l        | 5/19/2025 14:07:48   |      |
| ICV1         | S         | TKN-NH3      | P         | 4.9374  | mg/l        | 5/19/2025 15:29:04   |      |
| ICB1         | S         | TKN-NH3      | P         | 0.057   | mg/l        | 5/19/2025 15:29:07   |      |
| CCV1         | S         | TKN-NH3      | P         | 4.9686  | mg/l        | 5/19/2025 15:29:09   |      |
| CCB1         | S         | TKN-NH3      | P         | 0.0494  | mg/l        | 5/19/2025 15:29:11   |      |
| RL CHECK     | S         | TKN-NH3      | P         | 0.4966  | mg/l        | 5/19/2025 15:29:12   |      |
| PB168059BL   | S         | TKN-NH3      | P         | 0.0521  | mg/l        | 5/19/2025 15:29:14   |      |
| PB168059BS   | S         | TKN-NH3      | P         | 4.896   | mg/l        | 5/19/2025 15:39:47   |      |
| Q2033-01     | S         | TKN-NH3      | P         | 11.5128 | mg/l        | 5/19/2025 15:39:48   |      |
| Q2065-01     | S         | TKN-NH3      | P         | 3.989   | mg/l        | 5/19/2025 15:39:56   |      |
| Q2067-01     | S         | TKN-NH3      | P         | 0.9214  | mg/l        | 5/19/2025 16:22:14   |      |
| Q2067-01DUP  | S         | TKN-NH3      | P         | 0.9289  | mg/l        | 5/19/2025 16:22:17   |      |
| Q2067-01MS   | S         | TKN-NH3      | P         | 5.733   | mg/l        | 5/19/2025 16:22:18   |      |
| Q2067-01MSD  | S         | TKN-NH3      | P         | 5.4277  | mg/l        | 5/19/2025 16:22:19   |      |
| Q2068-03     | S         | TKN-NH3      | P         | 8.031   | mg/l        | 5/19/2025 16:22:20   |      |
| CCV2         | S         | TKN-NH3      | P         | 5.1078  | mg/l        | 5/19/2025 16:28:18   |      |
| CCB2         | S         | TKN-NH3      | P         | 0.0698  | mg/l        | 5/19/2025 16:28:19   |      |
| Q2033-01DLX2 | S         | TKN-NH3      | P         | 6.2027  | mg/l        | 5/19/2025 16:28:21   |      |
| CCV3         | S         | TKN-NH3      | P         | 5.1472  | mg/l        | 5/19/2025 16:47:35   |      |
| CCB3         | S         | TKN-NH3      | P         | 0.0639  | mg/l        | 5/19/2025 16:47:37   |      |

Calibration results

Aquakem 7.2AQ1

Page: 1

CHEMTECH CONSULTING GROUP INC  
 284 Sheffield Street, Mountainside, NJ 07092

Reviewed by : RM Instrument ID : Konelab

5/19/2025 14:15

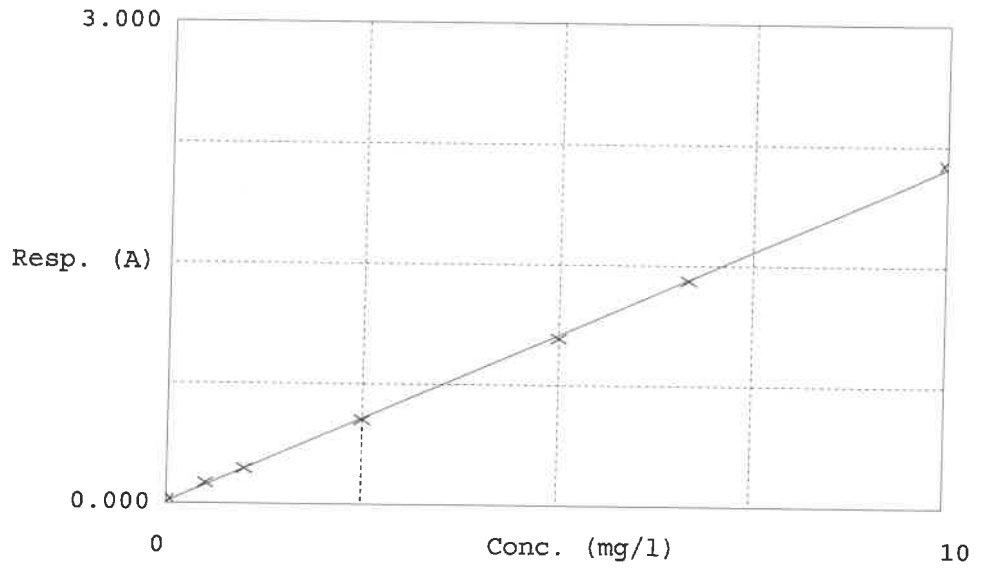
Test TKN-NH3

Accepted 5/19/2025 14:15

Factor 4.756  
 Bias 0.011

Coeff. of det. 0.999617

Errors



|   | Calibrator | Response | Calc. con. | Conc.   | Errors |
|---|------------|----------|------------|---------|--------|
| 1 | 0.00PPM    | 0.024    | 0.0592     | 0.0000  | -      |
| 2 | TKN-10     | 0.129    | 0.5606     | 0.5000  | 12.1   |
| 3 | TKN-10     | 0.219    | 0.9865     | 1.0000  | -1.4   |
| 4 | TKN-10     | 0.527    | 2.4514     | 2.5000  | -1.9   |
| 5 | TKN-10     | 1.039    | 4.8906     | 5.0000  | -2.2   |
| 6 | TKN-10     | 1.404    | 6.6264     | 6.6667  | -1.1   |
| 7 | TKN-10     | 2.133    | 10.0920    | 10.0000 | 0.9    |

05/19/2025  
 RM