

Data Path : Z:\pestpcbsrv\HPCHEM1\ECD_D\Data\PD052025\
 Data File : PD088663.D
 Signal(s) : Signal #1: ECD1A.ch Signal #2: ECD2B.ch
 Acq On : 20 May 2025 18:06
 Operator : AR\AJ
 Sample : Q2074-03
 Misc :
 ALS Vial : 32 Sample Multiplier: 1

Instrument :
 ECD_D
ClientSampleId :
 TP-15

Manual Integrations
APPROVED
 Reviewed By :Abdul Mirza 05/21/2025
 Supervised By :mohammad ahmed 05/22/2025

Integration File signal 1: autoint1.e
 Integration File signal 2: autoint2.e
 Quant Time: May 21 03:35:42 2025
 Quant Method : Z:\pestpcbsrv\HPCHEM1\ECD_D\Method\PD051925.M
 Quant Title : GC Extractables
 QLast Update : Mon May 19 15:27:28 2025
 Response via : Initial Calibration
 Integrator: ChemStation

Volume Inj. : 1 µl
 Signal #1 Phase : ZB-MR1 Signal #2 Phase: ZB-MR2
 Signal #1 Info : 30M x 0.32mm x0.5 Signal #2 Info : 30M x 0.32mm x 0.25µm

Compound	RT#1	RT#2	Resp#1	Resp#2	ng/ml	ng/ml

System Monitoring Compounds						
1) SA Tetrachlo...	3.551	2.881	38244592	280.7E6	17.675	18.558m
28) SA Decachlor...	9.076	8.073	45627503	241.5E6	13.332	13.228m
Target Compounds						
10) B gamma-Chl...	5.947	5.130	1444054	5540560	0.362	0.260 #
11) B alpha-Chl...	6.036	5.192	3714870	9479437	0.927	0.460m#

(f)=RT Delta > 1/2 Window (#)=Amounts differ by > 25% (m)=manual int.

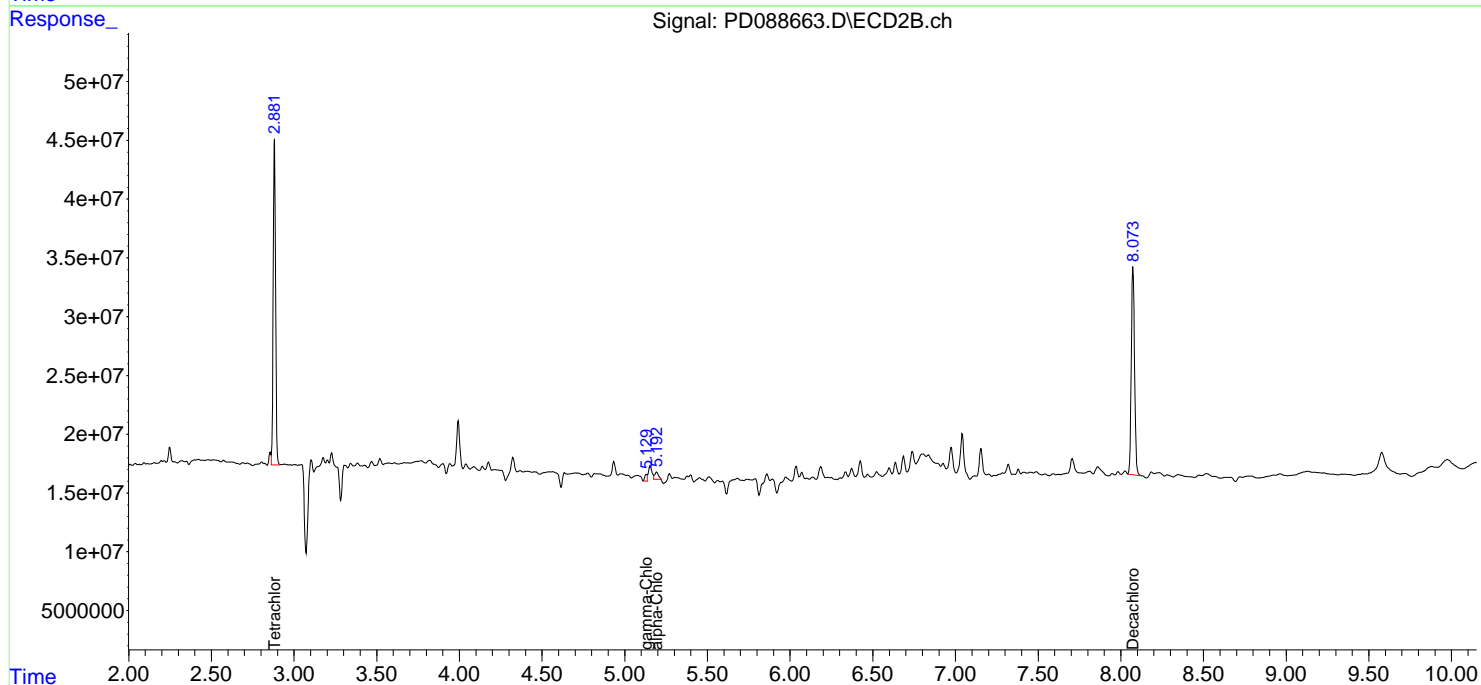
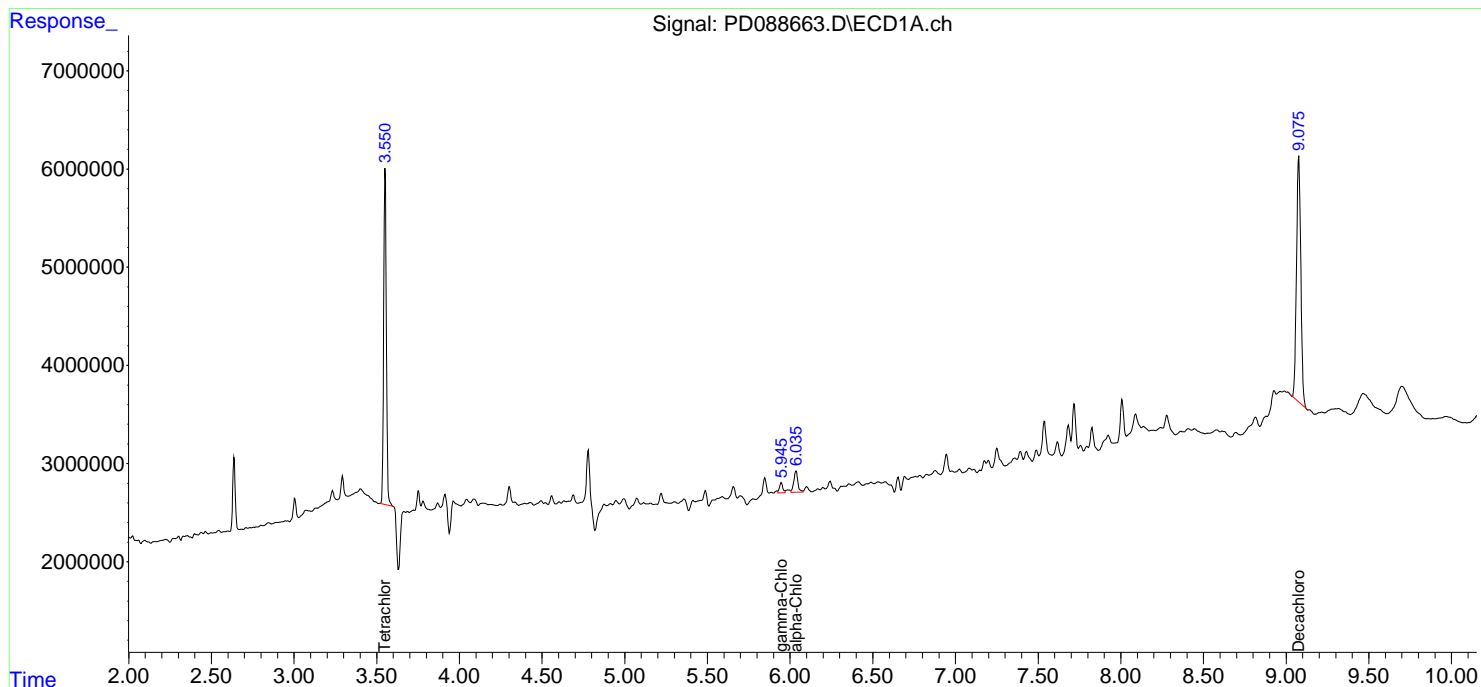
Data Path : Z:\pestpcbsrv\HPCHEM1\ECD_D\Data\PD052025\
 Data File : PD088663.D
 Signal(s) : Signal #1: ECD1A.ch Signal #2: ECD2B.ch
 Acq On : 20 May 2025 18:06
 Operator : AR\AJ
 Sample : Q2074-03
 Misc :
 ALS Vial : 32 Sample Multiplier: 1

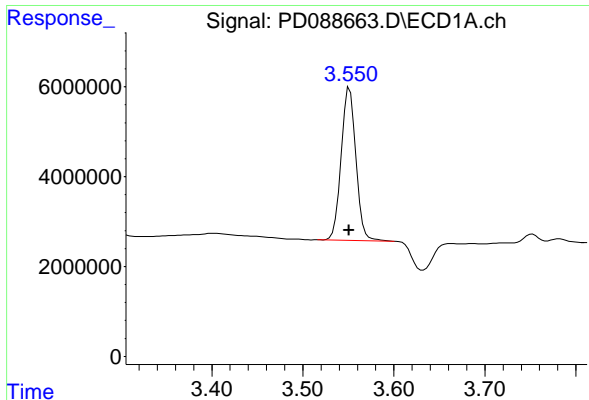
Instrument :
 ECD_D
ClientSampleId :
 TP-15

Manual Integrations
APPROVED
 Reviewed By :Abdul Mirza 05/21/2025
 Supervised By :mohammad ahmed 05/22/2025

Integration File signal 1: autoint1.e
 Integration File signal 2: autoint2.e
 Quant Time: May 21 03:35:42 2025
 Quant Method : Z:\pestpcbsrv\HPCHEM1\ECD_D\Method\PD051925.M
 Quant Title : GC Extractables
 QLast Update : Mon May 19 15:27:28 2025
 Response via : Initial Calibration
 Integrator: ChemStation

Volume Inj. : 1 µl
 Signal #1 Phase : ZB-MR1 Signal #2 Phase: ZB-MR2
 Signal #1 Info : 30M x 0.32mm x 0.5 Signal #2 Info : 30M x 0.32mm x 0.25µm





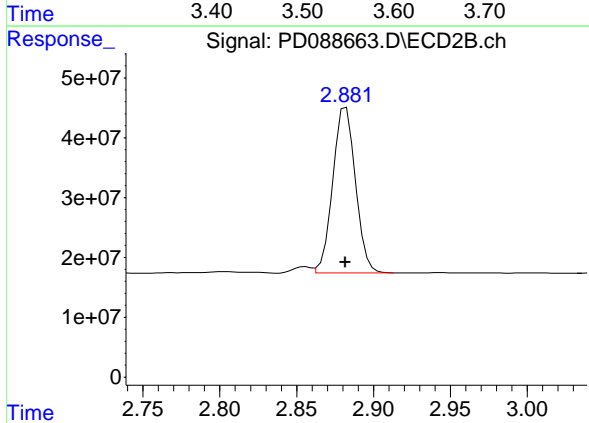
#1 Tetrachloro-m-xylene

R.T.: 3.551 min
 Delta R.T.: 0.000 min
 Response: 38244592
 Conc: 17.68 ng/ml

Instrument : ECD_D
 Client SampleId : TP-15

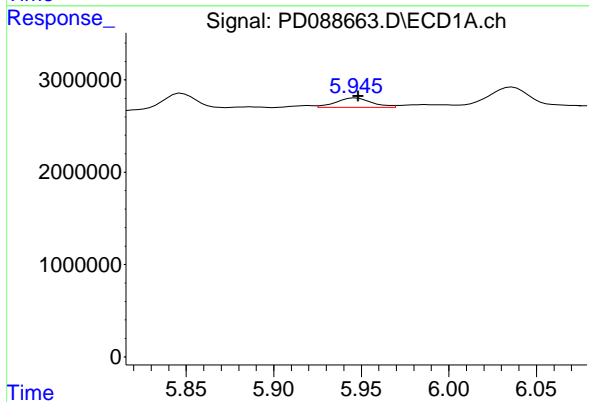
Manual Integrations
 APPROVED

Reviewed By :Abdul Mirza 05/21/2025
 Supervised By :mohammad ahmed 05/22/2025



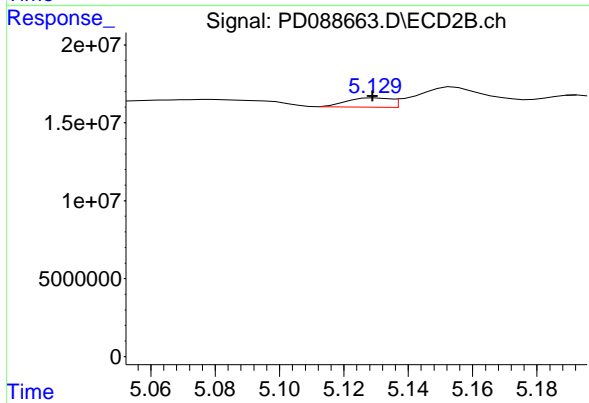
#1 Tetrachloro-m-xylene

R.T.: 2.881 min
 Delta R.T.: 0.000 min
 Response: 280723613
 Conc: 18.56 ng/ml m



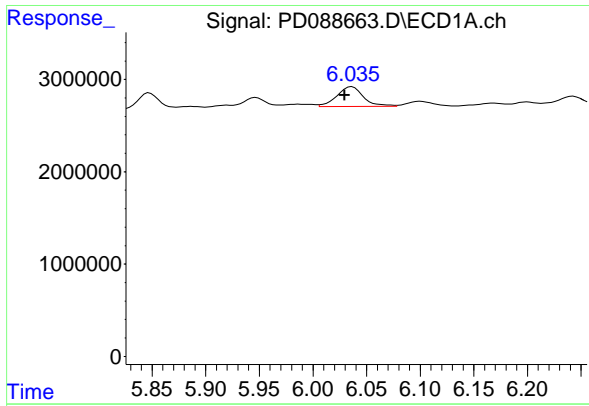
#10 gamma-Chlordane

R.T.: 5.947 min
 Delta R.T.: -0.002 min
 Response: 1444054
 Conc: 0.36 ng/ml



#10 gamma-Chlordane

R.T.: 5.130 min
 Delta R.T.: 0.001 min
 Response: 5540560
 Conc: 0.26 ng/ml



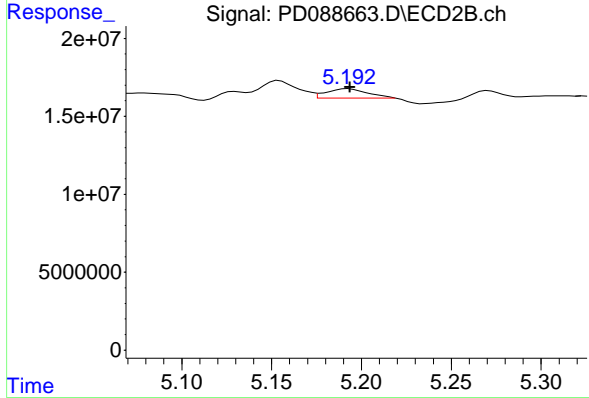
#11 alpha-Chlordane

R.T.: 6.036 min
 Delta R.T.: 0.007 min
 Response: 3714870
 Conc: 0.93 ng/ml

Instrument : ECD_D
 ClientSampleId : TP-15

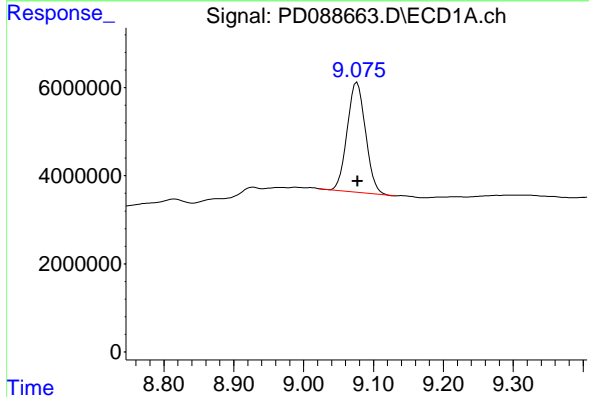
Manual Integrations
 APPROVED

Reviewed By :Abdul Mirza 05/21/2025
 Supervised By :mohammad ahmed 05/22/2025



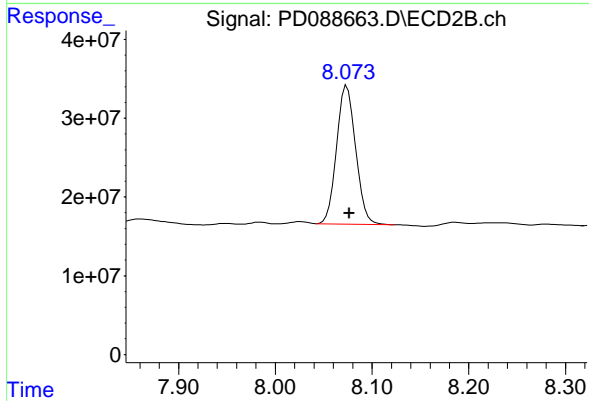
#11 alpha-Chlordane

R.T.: 5.192 min
 Delta R.T.: -0.002 min
 Response: 9479437
 Conc: 0.46 ng/ml m



#28 Decachlorobiphenyl

R.T.: 9.076 min
 Delta R.T.: -0.001 min
 Response: 45627503
 Conc: 13.33 ng/ml



#28 Decachlorobiphenyl

R.T.: 8.073 min
 Delta R.T.: -0.004 min
 Response: 241493927
 Conc: 13.23 ng/ml m