

Data Path : Z:\pestpcbsrv\HPCHEM1\ECD_L\Data\PL052225\
 Data File : PL095756.D
 Signal(s) : Signal #1: ECD1A.ch Signal #2: ECD2B.ch
 Acq On : 22 May 2025 09:18
 Operator : AR\AJ
 Sample : PSTDCCC050
 Misc :
 ALS Vial : 4 Sample Multiplier: 1

Instrument :
 ECD_L
 ClientSampleId :
 PSTDCCC050

Integration File signal 1: autoint1.e
 Integration File signal 2: autoint2.e
 Quant Time: May 22 11:45:38 2025
 Quant Method : Z:\pestpcbsrv\HPCHEM1\ECD_L\methods\PL052125.M
 Quant Title : GC Extractables
 QLast Update : Thu May 22 06:29:30 2025
 Response via : Initial Calibration
 Integrator: ChemStation

Volume Inj. : 1 µl
 Signal #1 Phase : ZB-MR2 Signal #2 Phase: ZB-MR2
 Signal #1 Info : 30M x 0.32mm x0.5 Signal #2 Info : 30M x 0.32mm x0.25µm

Compound	RT#1	RT#2	Resp#1	Resp#2	ng/ml	ng/ml

System Monitoring Compounds						
1) SA Tetrachlo...	3.573	2.885	169.2E6	203.3E6	53.637	51.931
28) SA Decachlor...	9.103	8.062	118.5E6	232.0E6	50.302	53.044
Target Compounds						
2) A alpha-BHC	4.024	3.395	264.4E6	313.5E6	54.538	53.524
3) MA gamma-BHC...	4.356	3.729	240.6E6	296.1E6	53.806	52.868
4) MA Heptachlor	4.954	4.082	193.3E6	277.6E6	51.070	49.495
5) MB Aldrin	5.297	4.367	232.8E6	282.0E6	54.413	53.128
6) B beta-BHC	4.544	4.025	105.1E6	129.0E6	53.295	52.082
7) B delta-BHC	4.792	4.260	237.4E6	298.1E6	53.548	52.793
8) B Heptachlo...	5.718	4.869	206.2E6	259.3E6	54.020	52.511
9) A Endosulfan I	6.102	5.242	197.1E6	247.5E6	53.777	51.951
10) B gamma-Chl...	5.973	5.122	213.2E6	275.3E6	54.766	52.406
11) B alpha-Chl...	6.054	5.186	212.2E6	271.0E6	53.759	52.092
12) B 4,4'-DDE	6.225	5.373	198.4E6	275.9E6	54.089	51.448
13) MA Dieldrin	6.375	5.507	209.8E6	276.5E6	54.351	52.163
14) MA Endrin	6.603	5.781	148.2E6	217.2E6	45.924	44.546
15) B Endosulfa...	6.815	6.072	176.7E6	245.6E6	51.271	51.686
16) A 4,4'-DDD	6.735	5.925	167.1E6	244.3E6	57.033	55.724
17) MA 4,4'-DDT	7.050	6.178	121.5E6	205.2E6	44.906	42.902
18) B Endrin al...	6.945	6.250	128.2E6	178.5E6	53.047	51.662
19) B Endosulfa...	7.179	6.473	157.3E6	233.3E6	52.664	51.906
20) A Methoxychlor	7.524	6.748	56563570	110.6E6	44.352	42.281
21) B Endrin ke...	7.660	6.979	179.8E6	290.0E6	56.764	56.052
22) Mirex	8.142	7.172	122.8E6	208.8E6	53.083	51.418

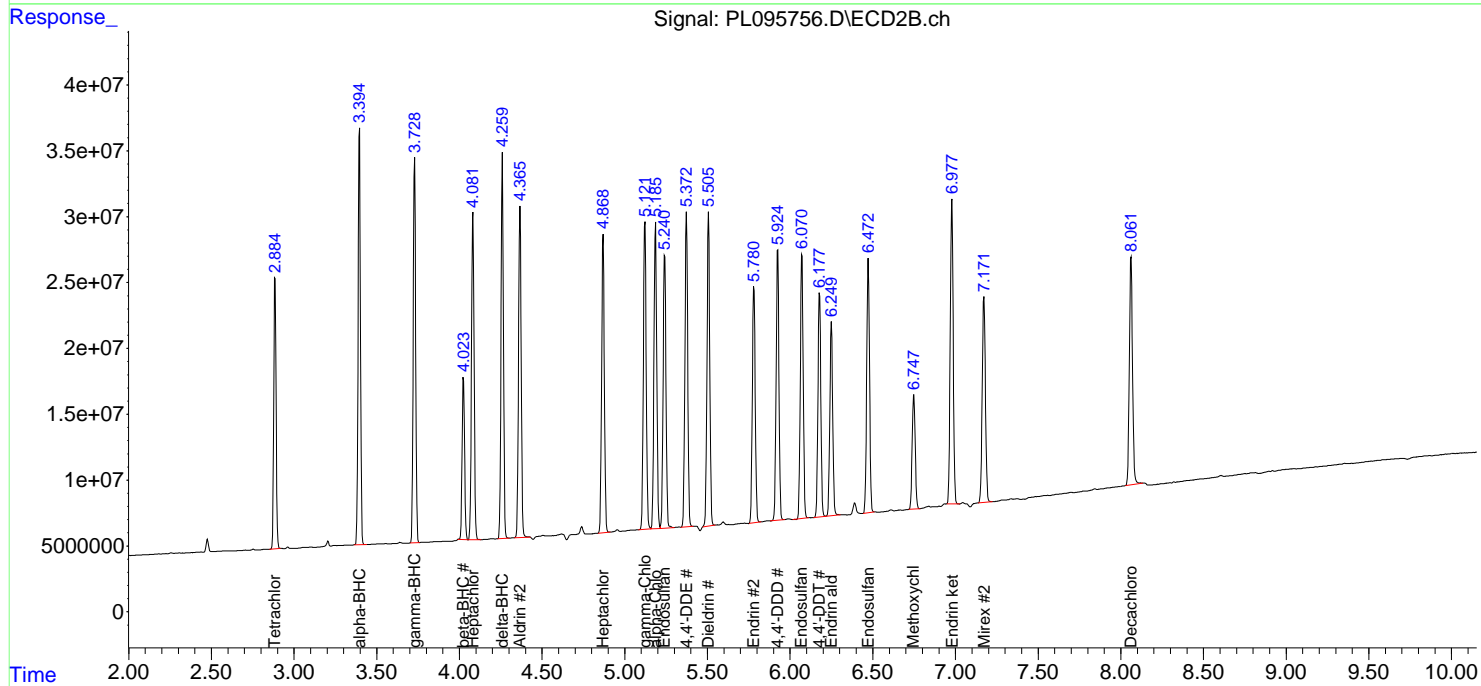
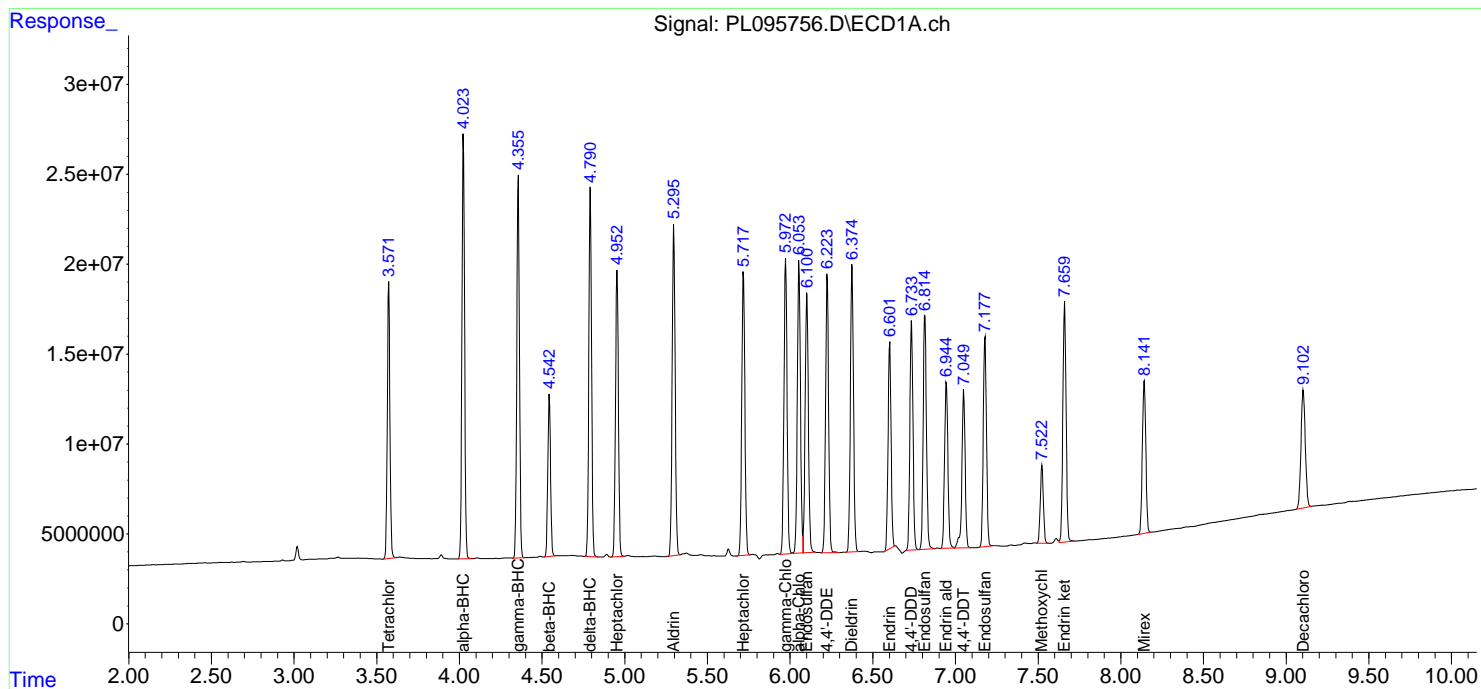
(f)=RT Delta > 1/2 Window (#)=Amounts differ by > 25% (m)=manual int.

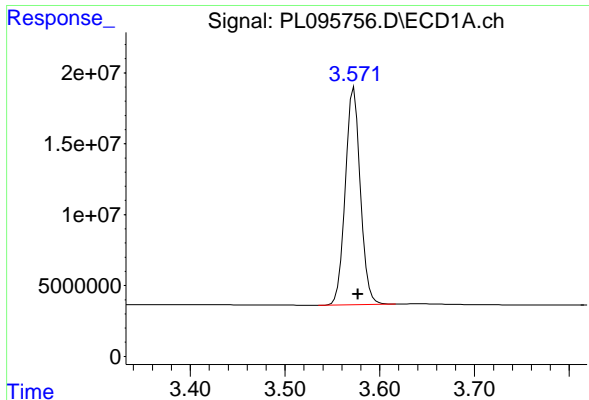
Data Path : Z:\pestpcbsrv\HPCHEM1\ECD_L\Data\PL052225\
 Data File : PL095756.D
 Signal(s) : Signal #1: ECD1A.ch Signal #2: ECD2B.ch
 Acq On : 22 May 2025 09:18
 Operator : AR\AJ
 Sample : PSTDCCC050
 Misc :
 ALS Vial : 4 Sample Multiplier: 1

Instrument :
 ECD_L
 ClientSampleId :
 PSTDCCC050

Integration File signal 1: autoint1.e
 Integration File signal 2: autoint2.e
 Quant Time: May 22 11:45:38 2025
 Quant Method : Z:\pestpcbsrv\HPCHEM1\ECD_L\methods\PL052125.M
 Quant Title : GC Extractables
 QLast Update : Thu May 22 06:29:30 2025
 Response via : Initial Calibration
 Integrator: ChemStation

Volume Inj. : 1 µl
 Signal #1 Phase : ZB-MR1 Signal #2 Phase: ZB-MR2
 Signal #1 Info : 30M x 0.32mm x0.5 Signal #2 Info : 30M x 0.32mm x0.25µm

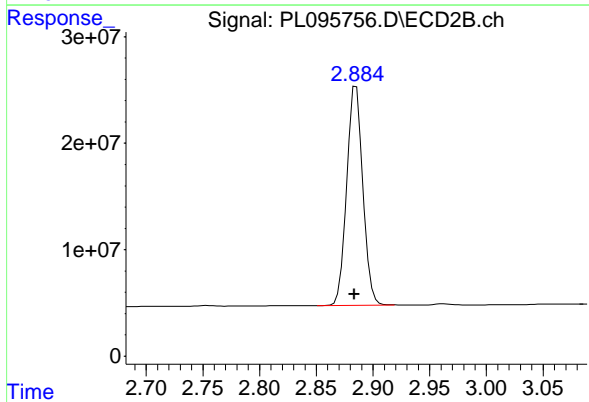




#1 Tetrachloro-m-xylene

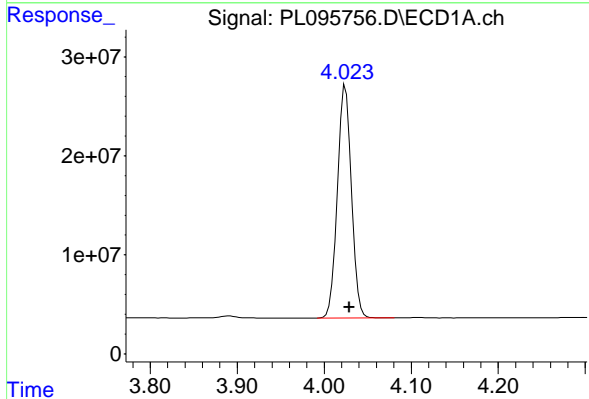
R.T.: 3.573 min
 Delta R.T.: -0.004 min
 Response: 169240141
 Conc: 53.64 ng/ml

Instrument :
 ECD_L
 ClientSampleId :
 PSTDCCC050



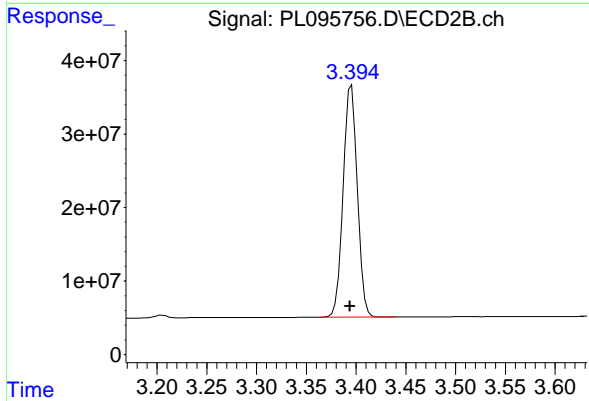
#1 Tetrachloro-m-xylene

R.T.: 2.885 min
 Delta R.T.: 0.002 min
 Response: 203255995
 Conc: 51.93 ng/ml



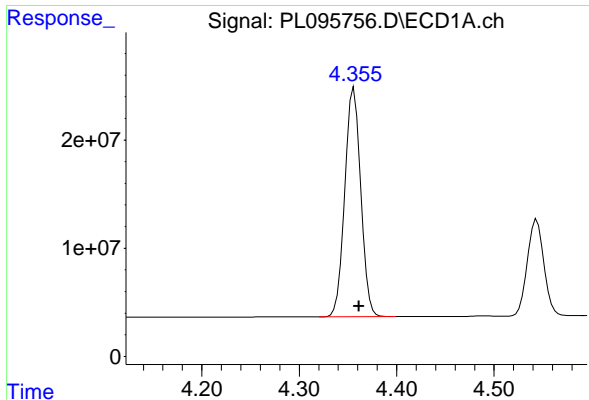
#2 alpha-BHC

R.T.: 4.024 min
 Delta R.T.: -0.005 min
 Response: 264397361
 Conc: 54.54 ng/ml



#2 alpha-BHC

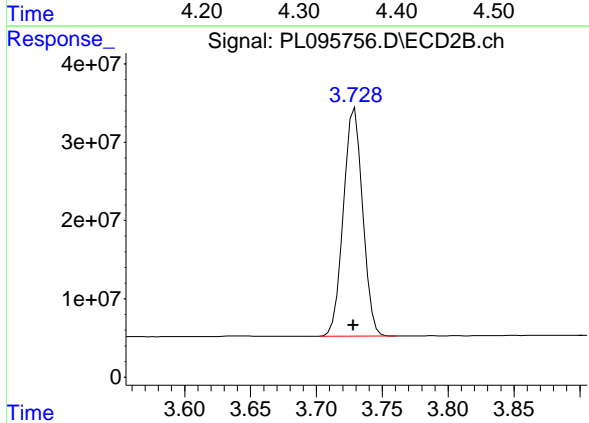
R.T.: 3.395 min
 Delta R.T.: 0.002 min
 Response: 313509354
 Conc: 53.52 ng/ml



#3 gamma-BHC (Lindane)

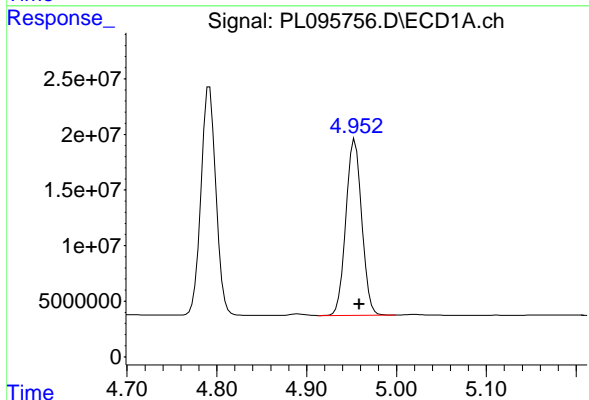
R.T.: 4.356 min
 Delta R.T.: -0.005 min
 Response: 240612222
 Conc: 53.81 ng/ml

Instrument :
 ECD_L
 ClientSampleId :
 PSTDCCC050



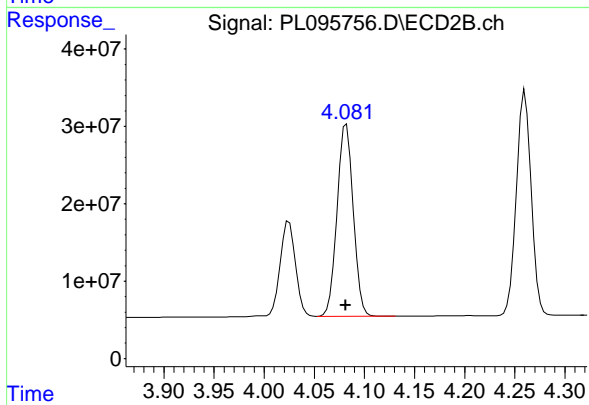
#3 gamma-BHC (Lindane)

R.T.: 3.729 min
 Delta R.T.: 0.001 min
 Response: 296126386
 Conc: 52.87 ng/ml



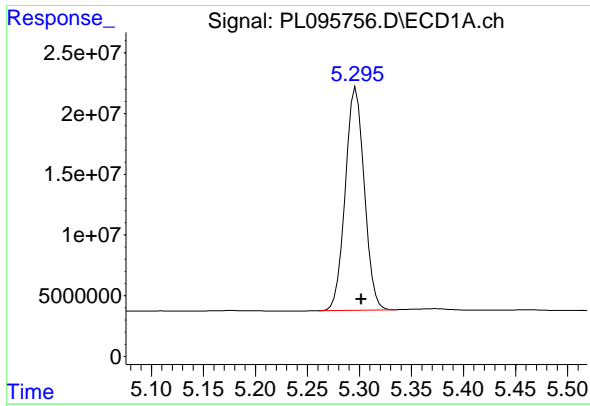
#4 Heptachlor

R.T.: 4.954 min
 Delta R.T.: -0.005 min
 Response: 193303692
 Conc: 51.07 ng/ml



#4 Heptachlor

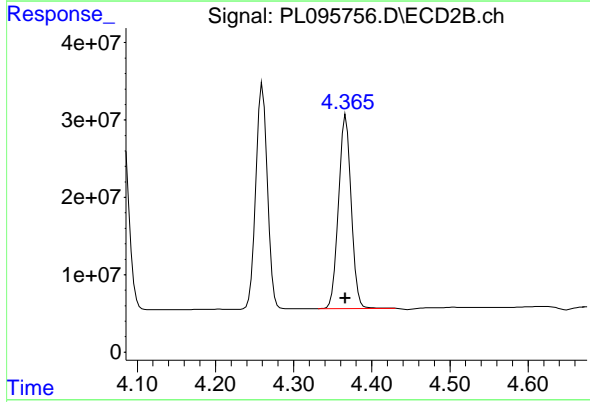
R.T.: 4.082 min
 Delta R.T.: 0.000 min
 Response: 277621152
 Conc: 49.50 ng/ml



#5 Aldrin

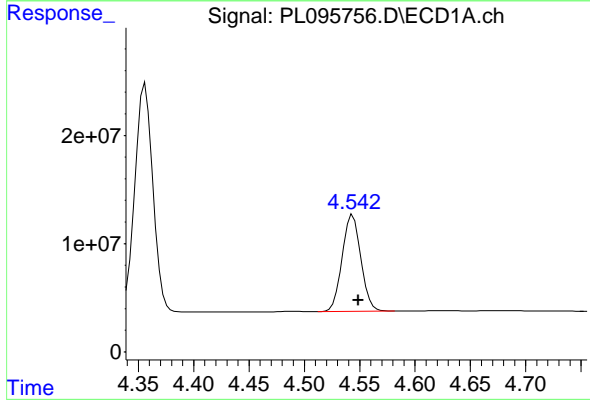
R.T.: 5.297 min
 Delta R.T.: -0.005 min
 Response: 232763860
 Conc: 54.41 ng/ml

Instrument :
 ECD_L
 ClientSampleId :
 PSTDCCC050



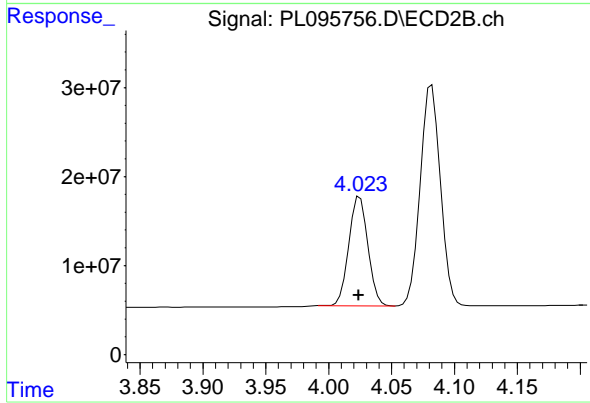
#5 Aldrin

R.T.: 4.367 min
 Delta R.T.: 0.000 min
 Response: 281956444
 Conc: 53.13 ng/ml



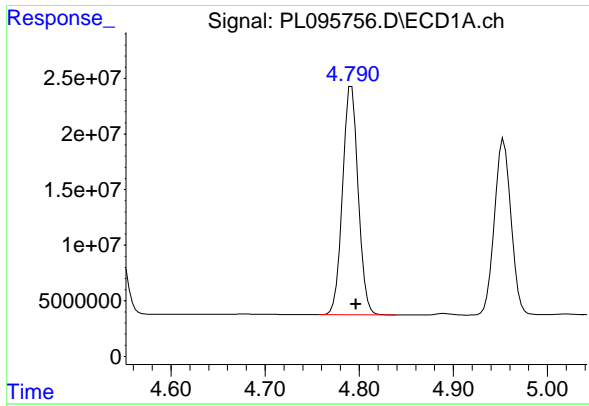
#6 beta-BHC

R.T.: 4.544 min
 Delta R.T.: -0.005 min
 Response: 105063378
 Conc: 53.29 ng/ml



#6 beta-BHC

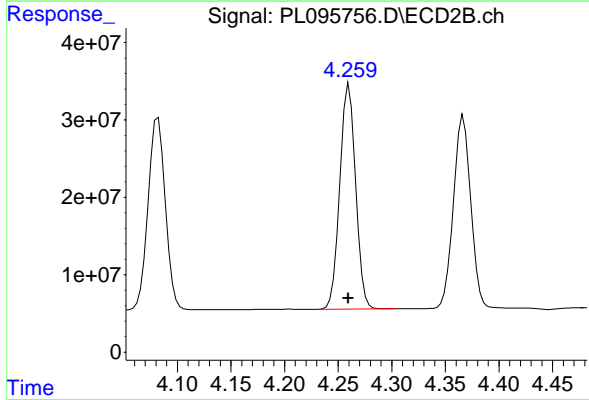
R.T.: 4.025 min
 Delta R.T.: 0.000 min
 Response: 129034839
 Conc: 52.08 ng/ml



#7 delta-BHC

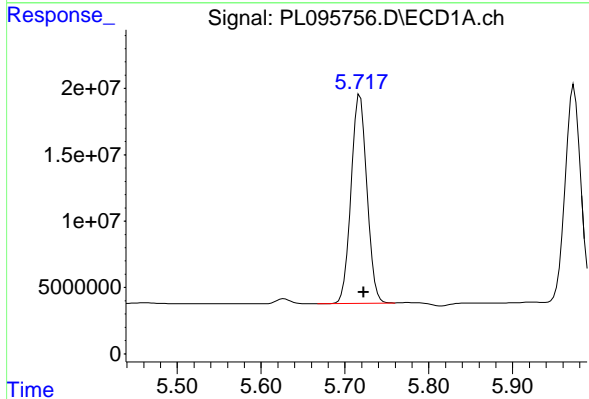
R.T.: 4.792 min
 Delta R.T.: -0.005 min
 Response: 237412973
 Conc: 53.55 ng/ml

Instrument :
 ECD_L
 ClientSampleId :
 PSTDCCC050



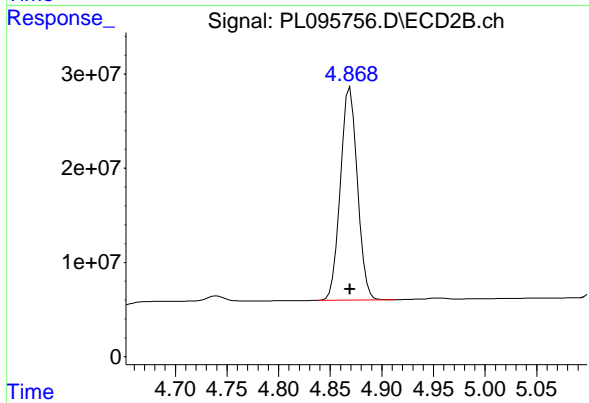
#7 delta-BHC

R.T.: 4.260 min
 Delta R.T.: 0.000 min
 Response: 298140239
 Conc: 52.79 ng/ml



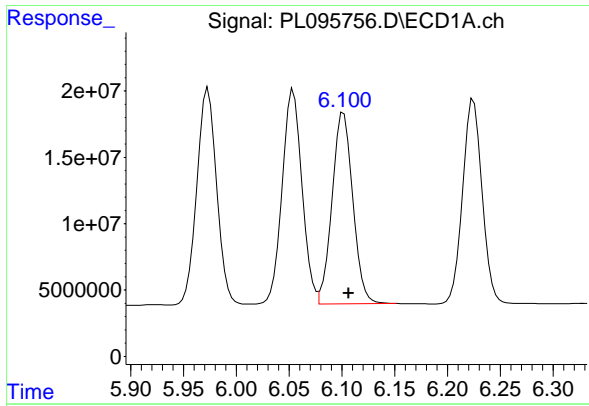
#8 Heptachlor epoxide

R.T.: 5.718 min
 Delta R.T.: -0.004 min
 Response: 206187087
 Conc: 54.02 ng/ml



#8 Heptachlor epoxide

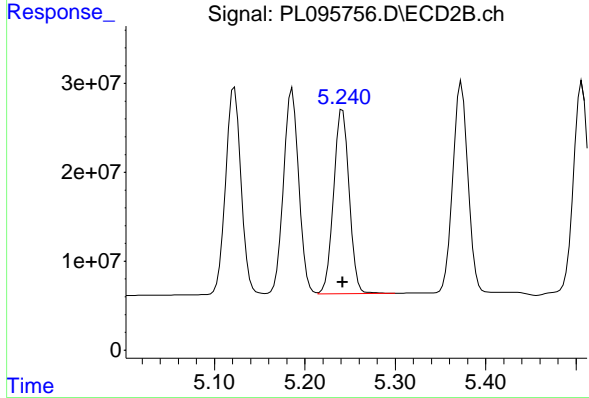
R.T.: 4.869 min
 Delta R.T.: 0.000 min
 Response: 259267802
 Conc: 52.51 ng/ml



#9 Endosulfan I

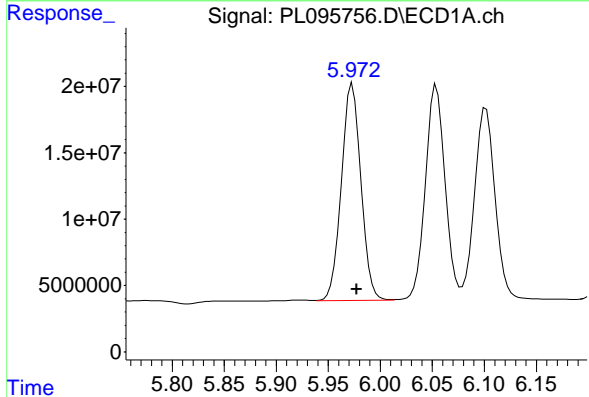
R.T.: 6.102 min
 Delta R.T.: -0.004 min
 Response: 197083823
 Conc: 53.78 ng/ml

Instrument :
 ECD_L
 ClientSampleId :
 PSTDCCC050



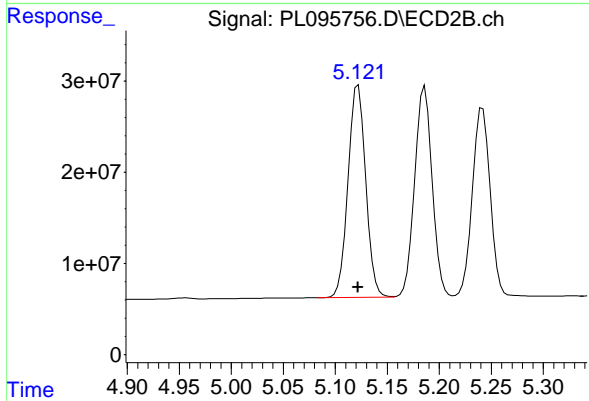
#9 Endosulfan I

R.T.: 5.242 min
 Delta R.T.: 0.000 min
 Response: 247543491
 Conc: 51.95 ng/ml



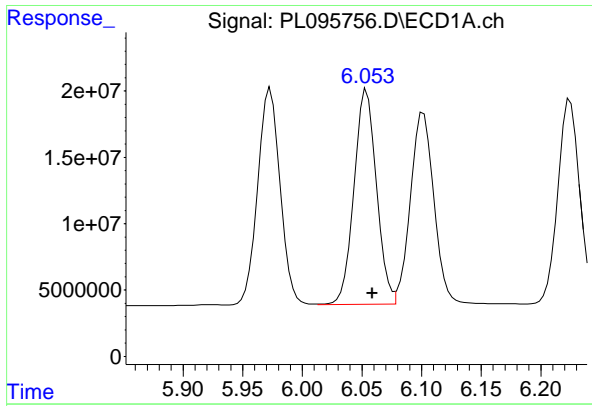
#10 gamma-Chlordane

R.T.: 5.973 min
 Delta R.T.: -0.004 min
 Response: 213153574
 Conc: 54.77 ng/ml



#10 gamma-Chlordane

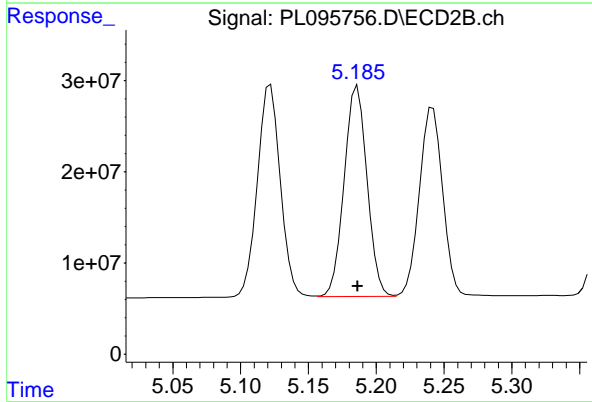
R.T.: 5.122 min
 Delta R.T.: 0.000 min
 Response: 275274302
 Conc: 52.41 ng/ml



#11 alpha-Chlordane

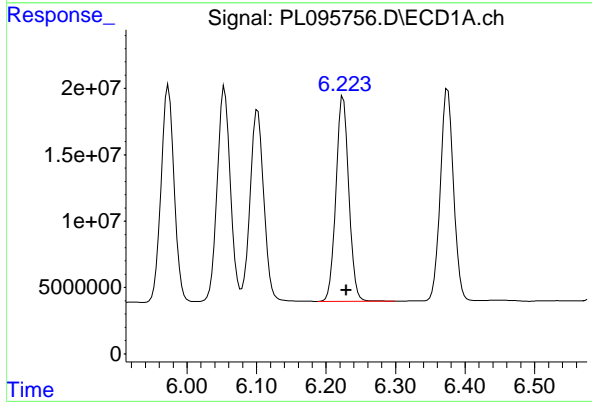
R.T.: 6.054 min
 Delta R.T.: -0.005 min
 Response: 212249794
 Conc: 53.76 ng/ml

Instrument :
 ECD_L
 ClientSampleId :
 PSTDCCC050



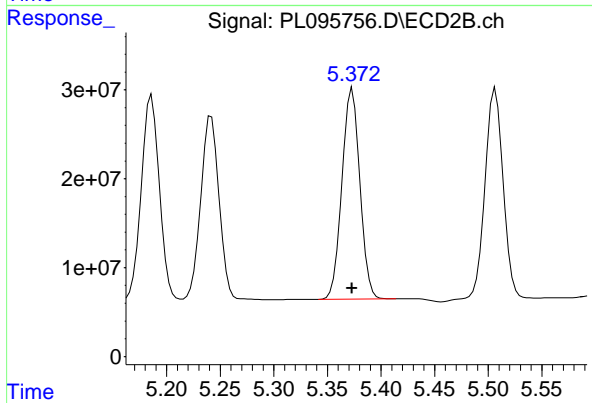
#11 alpha-Chlordane

R.T.: 5.186 min
 Delta R.T.: 0.000 min
 Response: 271022208
 Conc: 52.09 ng/ml



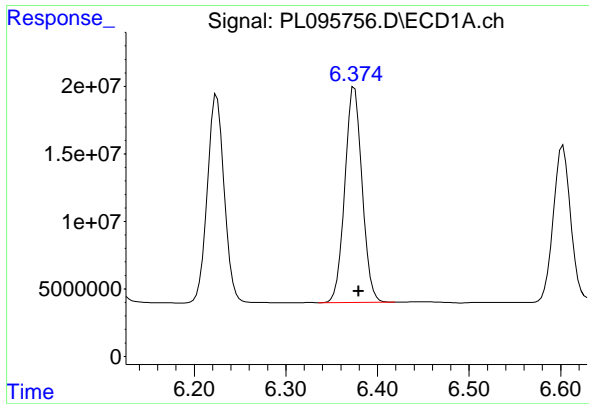
#12 4,4'-DDE

R.T.: 6.225 min
 Delta R.T.: -0.004 min
 Response: 198391319
 Conc: 54.09 ng/ml



#12 4,4'-DDE

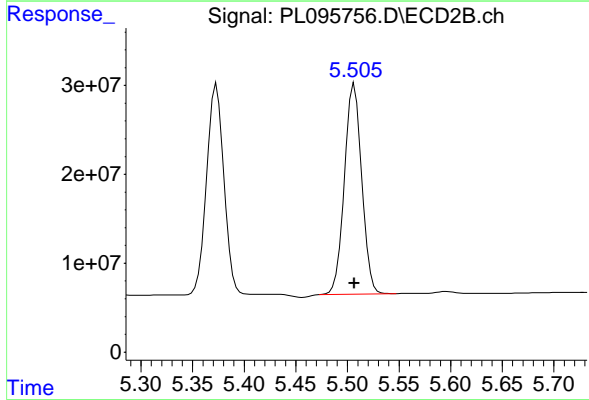
R.T.: 5.373 min
 Delta R.T.: 0.000 min
 Response: 275873474
 Conc: 51.45 ng/ml



#13 Dieldrin

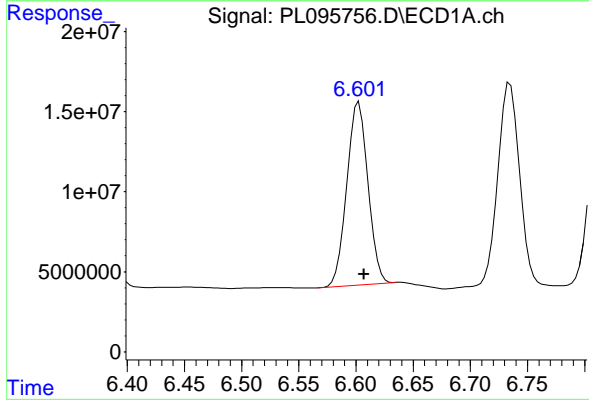
R.T.: 6.375 min
 Delta R.T.: -0.005 min
 Response: 209752109
 Conc: 54.35 ng/ml

Instrument :
 ECD_L
 ClientSampleId :
 PSTDCCC050



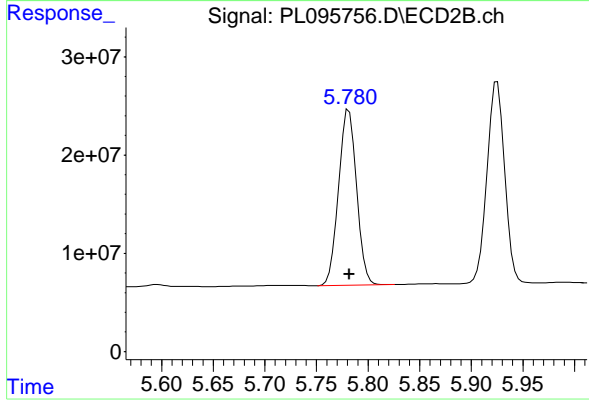
#13 Dieldrin

R.T.: 5.507 min
 Delta R.T.: 0.000 min
 Response: 276470244
 Conc: 52.16 ng/ml



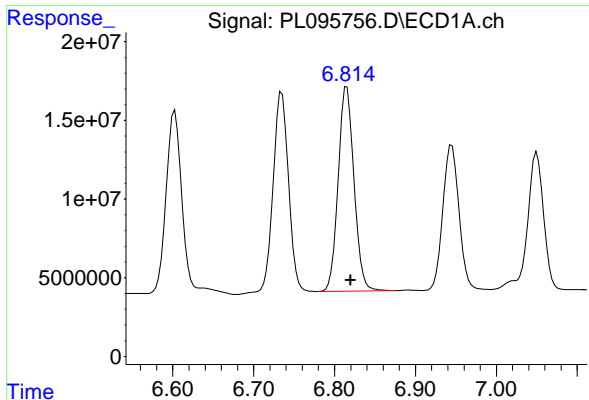
#14 Endrin

R.T.: 6.603 min
 Delta R.T.: -0.004 min
 Response: 148186441
 Conc: 45.92 ng/ml



#14 Endrin

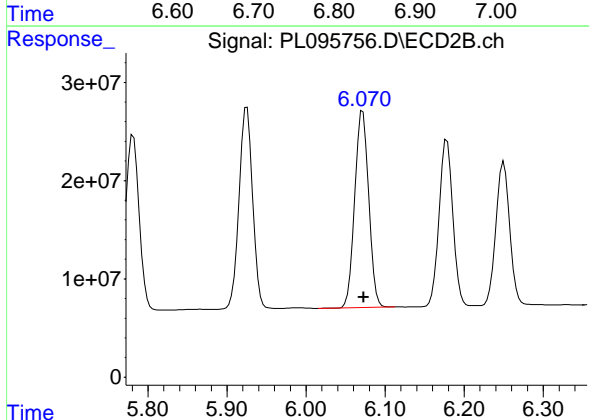
R.T.: 5.781 min
 Delta R.T.: 0.000 min
 Response: 217213134
 Conc: 44.55 ng/ml



#15 Endosulfan II

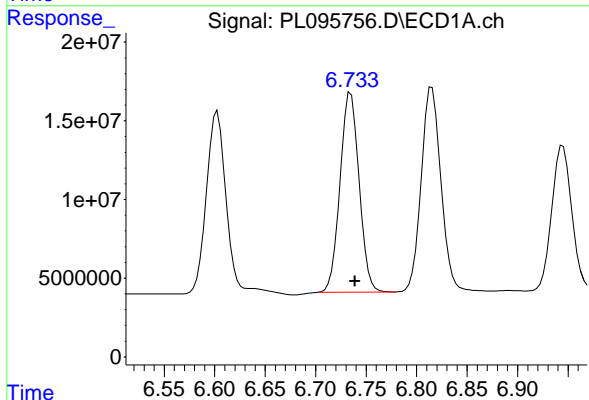
R.T.: 6.815 min
Delta R.T.: -0.005 min
Response: 176683849
Conc: 51.27 ng/ml

Instrument :
ECD_L
ClientSampleId :
PSTDCCC050



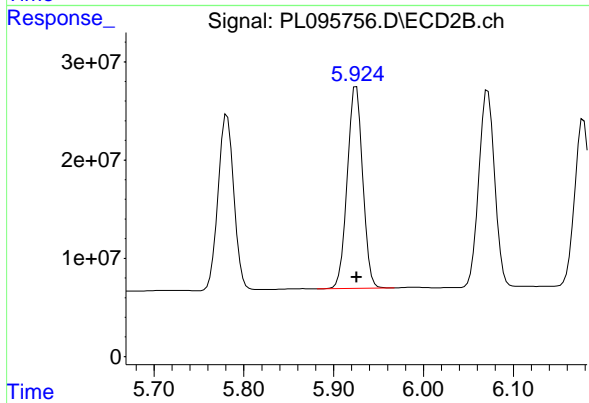
#15 Endosulfan II

R.T.: 6.072 min
Delta R.T.: 0.000 min
Response: 245600318
Conc: 51.69 ng/ml



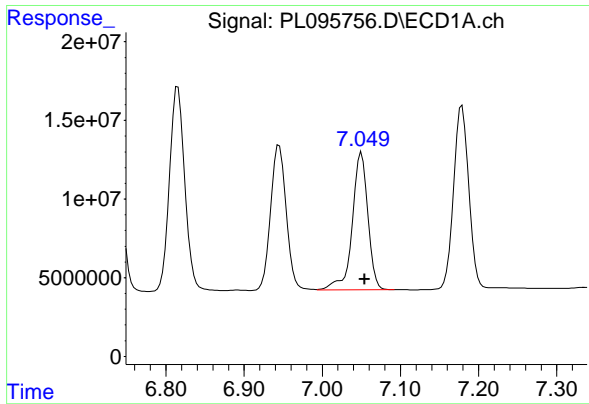
#16 4,4'-DDD

R.T.: 6.735 min
Delta R.T.: -0.004 min
Response: 167140904
Conc: 57.03 ng/ml



#16 4,4'-DDD

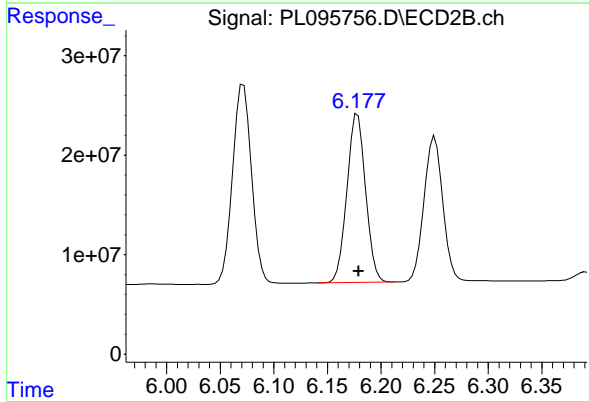
R.T.: 5.925 min
Delta R.T.: 0.000 min
Response: 244344543
Conc: 55.72 ng/ml



#17 4,4' -DDT

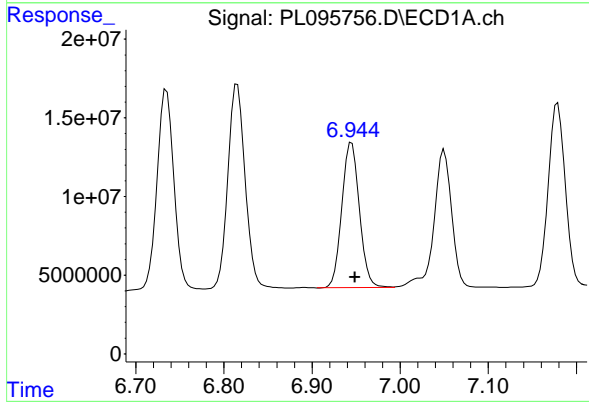
R.T.: 7.050 min
 Delta R.T.: -0.004 min
 Response: 121475912
 Conc: 44.91 ng/ml

Instrument :
 ECD_L
 ClientSampleId :
 PSTDCCC050



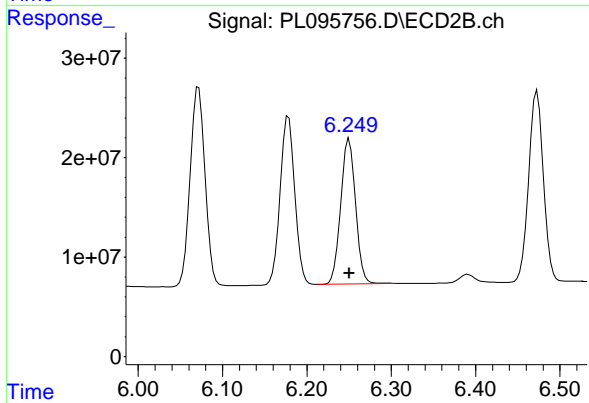
#17 4,4' -DDT

R.T.: 6.178 min
 Delta R.T.: -0.001 min
 Response: 205184524
 Conc: 42.90 ng/ml



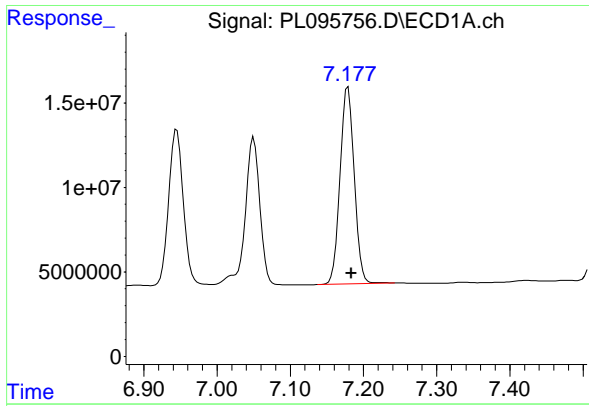
#18 Endrin aldehyde

R.T.: 6.945 min
 Delta R.T.: -0.004 min
 Response: 128247379
 Conc: 53.05 ng/ml



#18 Endrin aldehyde

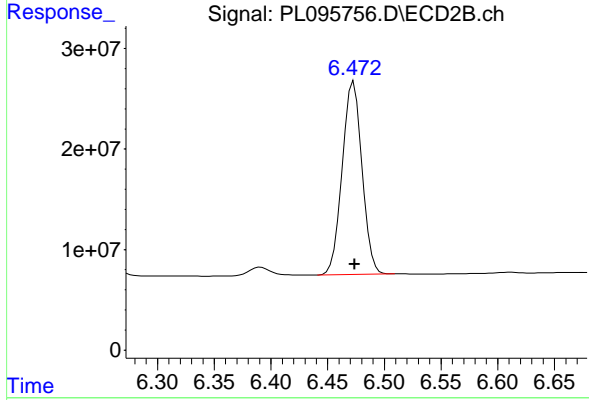
R.T.: 6.250 min
 Delta R.T.: 0.000 min
 Response: 178456484
 Conc: 51.66 ng/ml



#19 Endosulfan Sulfate

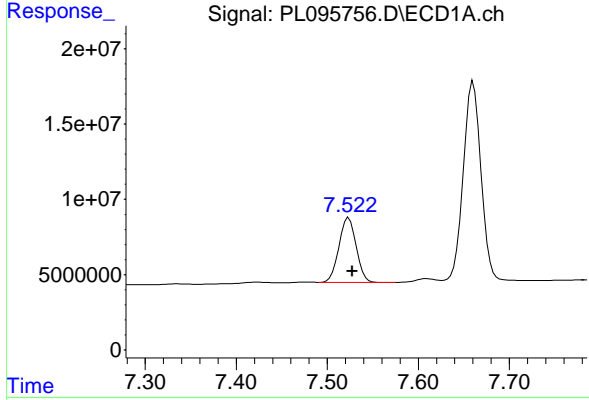
R.T.: 7.179 min
 Delta R.T.: -0.004 min
 Response: 157302672
 Conc: 52.66 ng/ml

Instrument : ECD_L
 ClientSampleId : PSTDCCC050



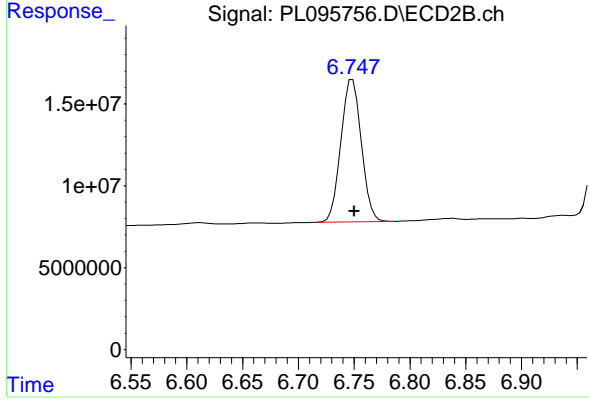
#19 Endosulfan Sulfate

R.T.: 6.473 min
 Delta R.T.: 0.000 min
 Response: 233303976
 Conc: 51.91 ng/ml



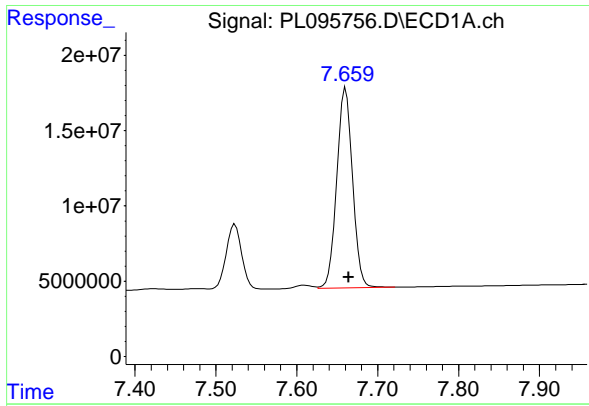
#20 Methoxychlor

R.T.: 7.524 min
 Delta R.T.: -0.004 min
 Response: 56563570
 Conc: 44.35 ng/ml



#20 Methoxychlor

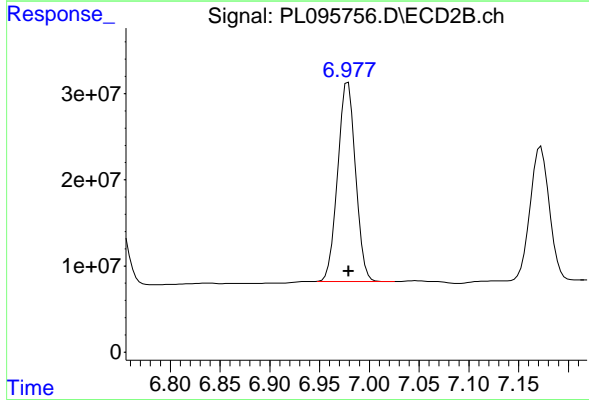
R.T.: 6.748 min
 Delta R.T.: -0.002 min
 Response: 110612746
 Conc: 42.28 ng/ml



#21 Endrin ketone

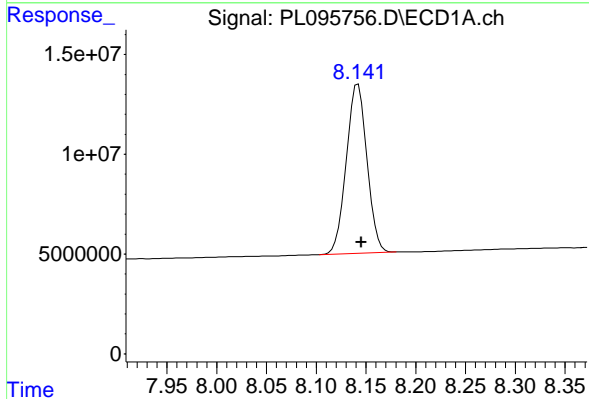
R.T.: 7.660 min
 Delta R.T.: -0.004 min
 Response: 179766965
 Conc: 56.76 ng/ml

Instrument :
 ECD_L
 ClientSampleId :
 PSTDCCC050



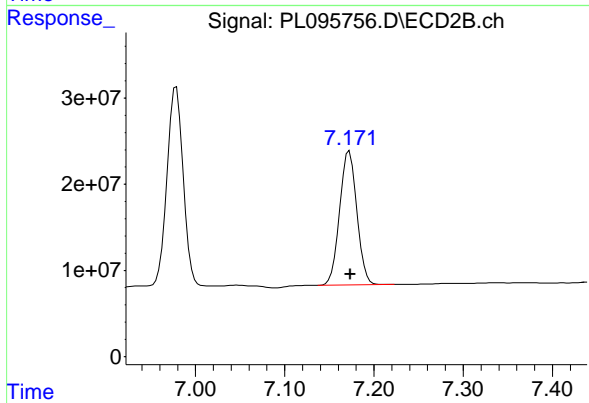
#21 Endrin ketone

R.T.: 6.979 min
 Delta R.T.: 0.000 min
 Response: 290004205
 Conc: 56.05 ng/ml



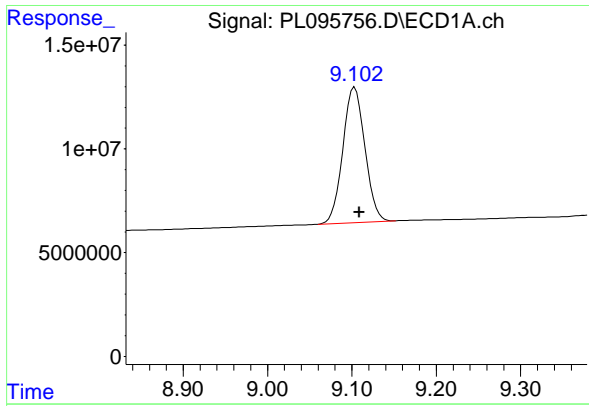
#22 Mirex

R.T.: 8.142 min
 Delta R.T.: -0.003 min
 Response: 122822189
 Conc: 53.08 ng/ml



#22 Mirex

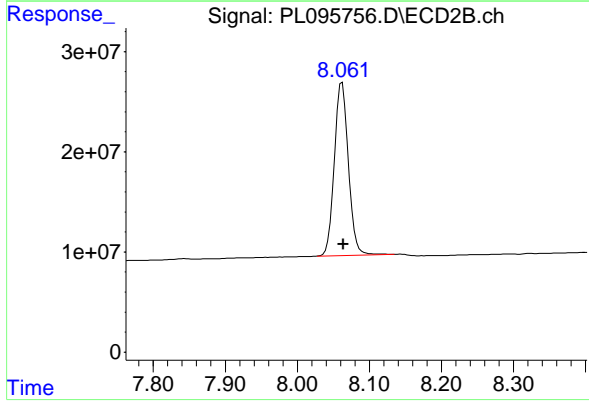
R.T.: 7.172 min
 Delta R.T.: -0.001 min
 Response: 208784298
 Conc: 51.42 ng/ml



#28 Decachlorobiphenyl

R.T.: 9.103 min
Delta R.T.: -0.006 min
Response: 118528940
Conc: 50.30 ng/ml

Instrument :
ECD_L
ClientSampleId :
PSTDCCC050



#28 Decachlorobiphenyl

R.T.: 8.062 min
Delta R.T.: -0.002 min
Response: 232036658
Conc: 53.04 ng/ml