

Data Path : Z:\pestpcbsrv\HPCHEM1\ECD_L\Data\PL052125\
 Data File : PL095737.D
 Signal(s) : Signal #1: ECD1A.ch Signal #2: ECD2B.ch
 Acq On : 21 May 2025 12:02
 Operator : AR\AJ
 Sample : PSTDICC050
 Misc :
 ALS Vial : 7 Sample Multiplier: 1

Instrument :
 ECD_L
 ClientSampleId :
 PSTDICC050

Integration File signal 1: autoint1.e
 Integration File signal 2: autoint2.e
 Quant Time: May 22 06:17:43 2025
 Quant Method : Z:\pestpcbsrv\HPCHEM1\ECD_L\methods\PL052125.M
 Quant Title : GC Extractables
 QLast Update : Thu May 22 06:14:04 2025
 Response via : Initial Calibration
 Integrator: ChemStation

Volume Inj. : 1 µl
 Signal #1 Phase : ZB-MR1 Signal #2 Phase: ZB-MR2
 Signal #1 Info : 30M x 0.32mm x0.5 Signal #2 Info : 30M x 0.32mm x0.25µm

Compound	RT#1	RT#2	Resp#1	Resp#2	ng/ml	ng/ml

System Monitoring Compounds						
1) SA Tetrachlo...	3.573	2.886	153.3E6	192.3E6	50.000	50.000
28) SA Decachlor...	9.103	8.064	115.2E6	221.2E6	50.000	50.000
Target Compounds						
2) A alpha-BHC	4.025	3.396	240.0E6	297.8E6	50.000	50.000
3) MA gamma-BHC...	4.357	3.730	220.0E6	282.6E6	50.000	50.000
4) MA Heptachlor	4.955	4.083	186.1E6	280.6E6	50.000	50.000
5) MB Aldrin	5.297	4.368	210.6E6	268.0E6	50.000	50.000
6) B beta-BHC	4.544	4.026	96510671	123.6E6	50.000	50.000
7) B delta-BHC	4.792	4.261	219.2E6	285.0E6	50.000	50.000
8) B Heptachlo...	5.718	4.871	186.6E6	247.2E6	50.000	50.000
9) A Endosulfan I	6.102	5.243	179.7E6	238.4E6	50.000	50.000
10) B gamma-Chl...	5.973	5.123	192.3E6	261.6E6	50.000	50.000
11) B alpha-Chl...	6.054	5.187	193.5E6	258.5E6	50.000	50.000
12) B 4,4'-DDE	6.224	5.374	181.6E6	267.1E6	50.000	50.000
13) MA Dieldrin	6.375	5.508	190.7E6	264.8E6	50.000	50.000
14) MA Endrin	6.602	5.783	159.3E6	242.1E6	50.000	50.000
15) B Endosulfa...	6.815	6.073	166.3E6	236.1E6	50.000	50.000
16) A 4,4'-DDD	6.734	5.926	144.5E6	220.2E6	50.000	50.000
17) MA 4,4'-DDT	7.050	6.180	132.5E6	240.3E6	50.000	50.000
18) B Endrin al...	6.944	6.251	118.3E6	170.9E6	50.000	50.000
19) B Endosulfa...	7.178	6.475	146.3E6	223.8E6	50.000	50.000
20) A Methoxychlor	7.523	6.751	63073290	129.6E6	50.000	50.000
21) B Endrin ke...	7.660	6.980	156.8E6	258.2E6	50.000	50.000
22) Mirex	8.142	7.174	113.6E6	199.5E6	50.000	50.000

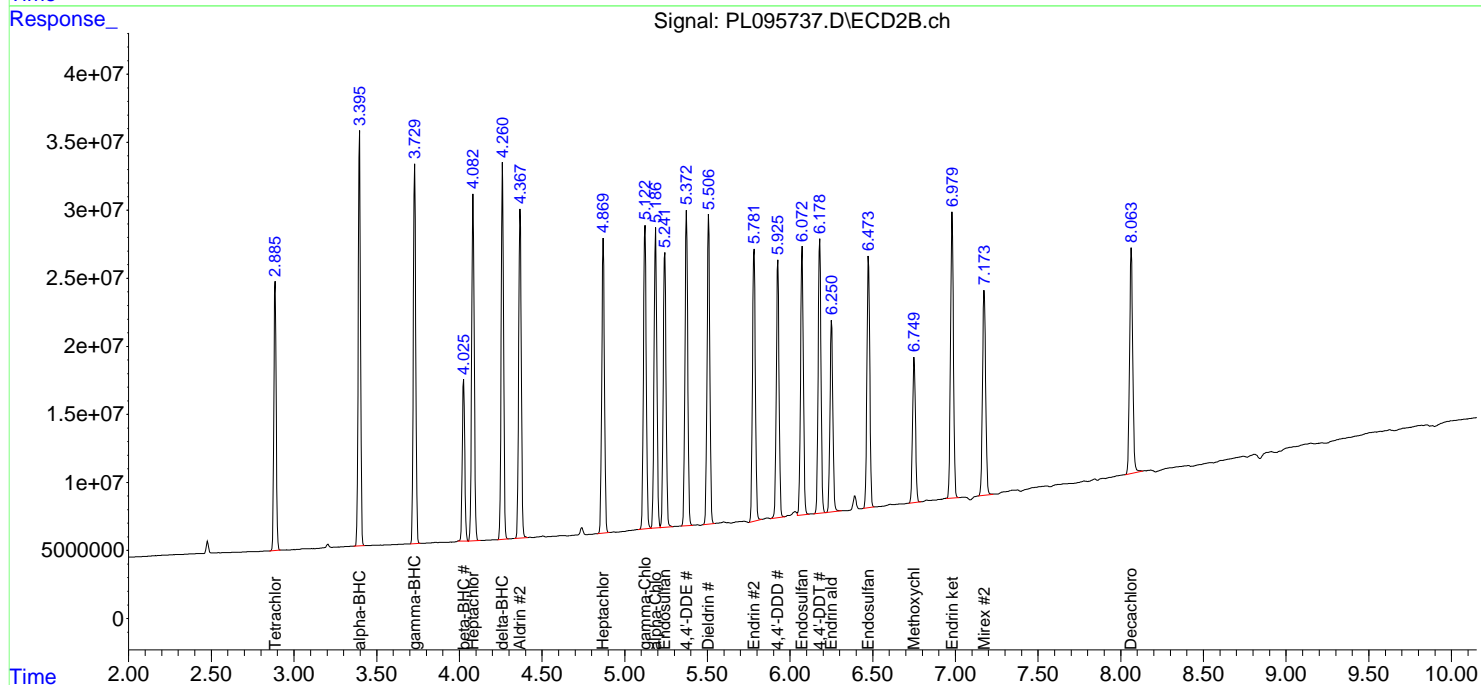
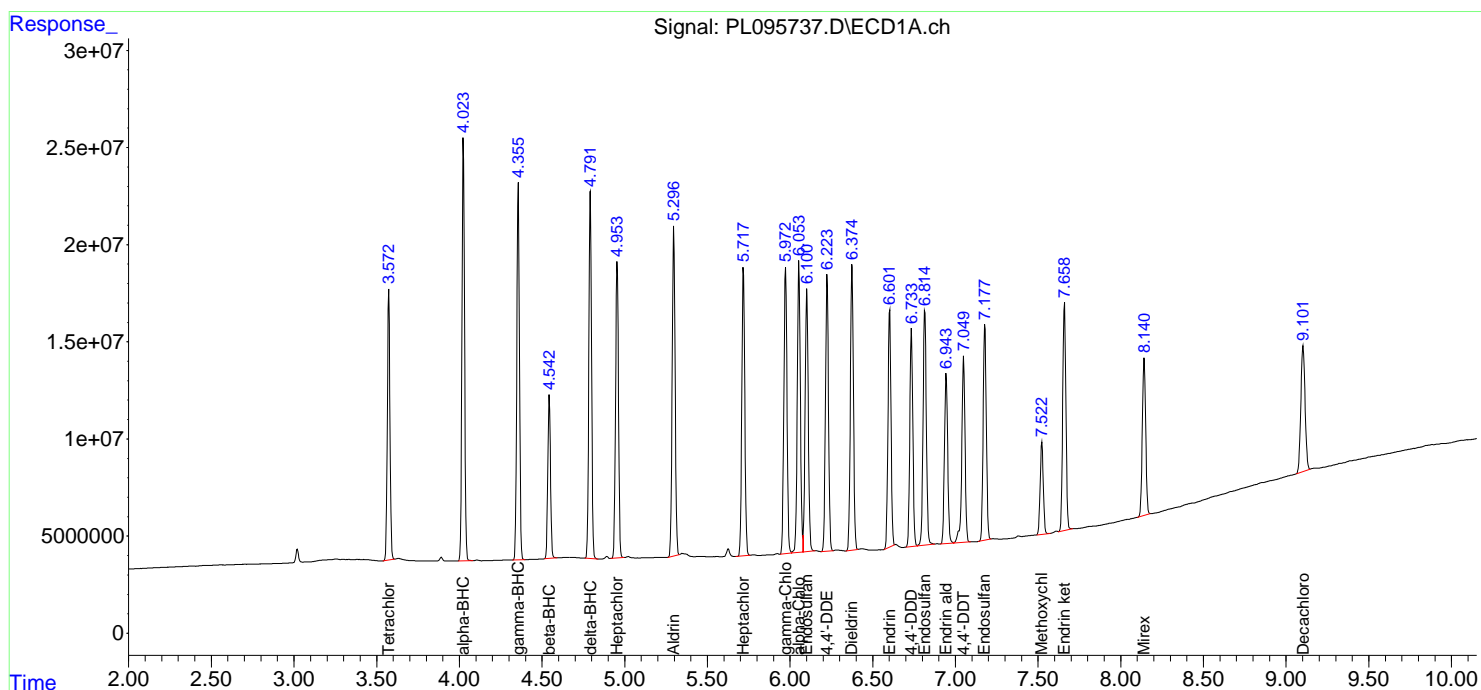
(f)=RT Delta > 1/2 Window (#)=Amounts differ by > 25% (m)=manual int.

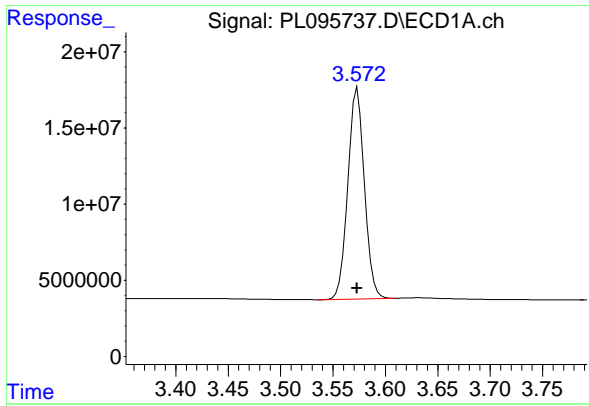
Data Path : Z:\pestpcbsrv\HPCHEM1\ECD_L\Data\PL052125\
 Data File : PL095737.D
 Signal(s) : Signal #1: ECD1A.ch Signal #2: ECD2B.ch
 Acq On : 21 May 2025 12:02
 Operator : AR\AJ
 Sample : PSTDICC050
 Misc :
 ALS Vial : 7 Sample Multiplier: 1

Instrument :
 ECD_L
 ClientSampleId :
 PSTDICC050

Integration File signal 1: autoint1.e
 Integration File signal 2: autoint2.e
 Quant Time: May 22 06:17:43 2025
 Quant Method : Z:\pestpcbsrv\HPCHEM1\ECD_L\methods\PL052125.M
 Quant Title : GC Extractables
 QLast Update : Thu May 22 06:14:04 2025
 Response via : Initial Calibration
 Integrator: ChemStation

Volume Inj. : 1 µl
 Signal #1 Phase : ZB-MR1 Signal #2 Phase: ZB-MR2
 Signal #1 Info : 30M x 0.32mm x0.5 Signal #2 Info : 30M x 0.32mm x0.25µm

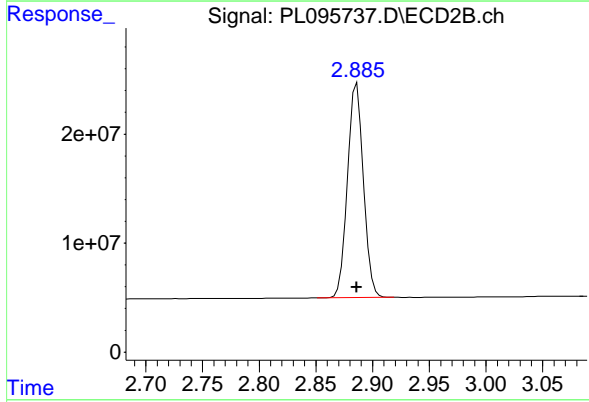




#1 Tetrachloro-m-xylene

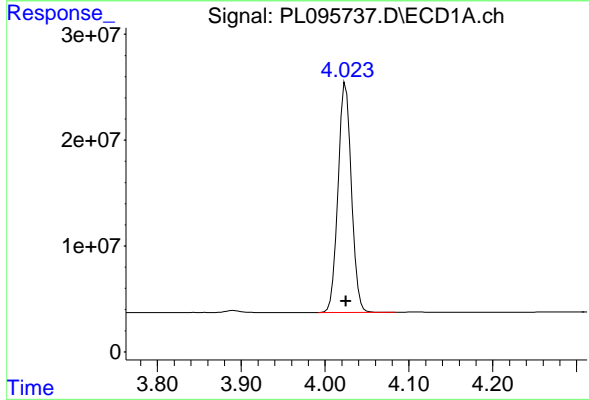
R.T.: 3.573 min
 Delta R.T.: 0.000 min
 Response: 153291163
 Conc: 50.00 ng/ml

Instrument :
 ECD_L
 ClientSampleId :
 PSTDICC050



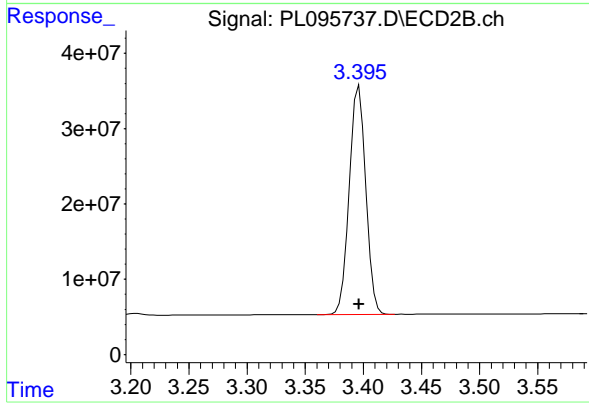
#1 Tetrachloro-m-xylene

R.T.: 2.886 min
 Delta R.T.: 0.000 min
 Response: 192349216
 Conc: 50.00 ng/ml



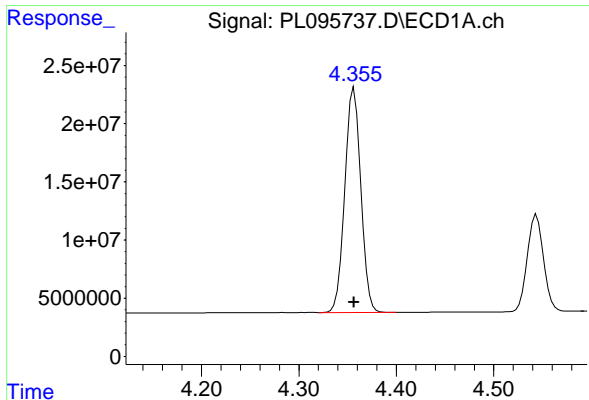
#2 alpha-BHC

R.T.: 4.025 min
 Delta R.T.: 0.000 min
 Response: 239994968
 Conc: 50.00 ng/ml



#2 alpha-BHC

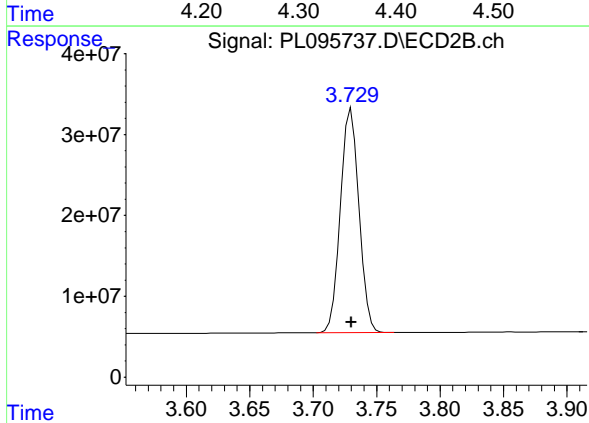
R.T.: 3.396 min
 Delta R.T.: 0.000 min
 Response: 297834363
 Conc: 50.00 ng/ml



#3 gamma-BHC (Lindane)

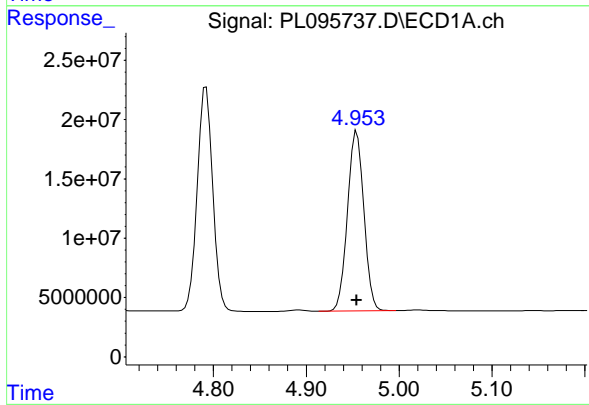
R.T.: 4.357 min
 Delta R.T.: 0.000 min
 Response: 220038465
 Conc: 50.00 ng/ml

Instrument :
 ECD_L
 ClientSampleId :
 PSTDICC050



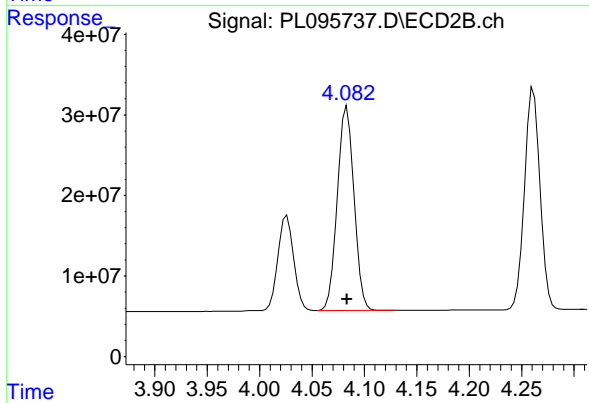
#3 gamma-BHC (Lindane)

R.T.: 3.730 min
 Delta R.T.: 0.000 min
 Response: 282610422
 Conc: 50.00 ng/ml



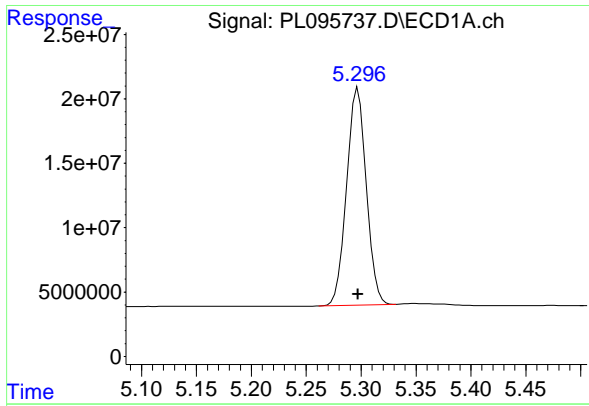
#4 Heptachlor

R.T.: 4.955 min
 Delta R.T.: 0.000 min
 Response: 186075842
 Conc: 50.00 ng/ml



#4 Heptachlor

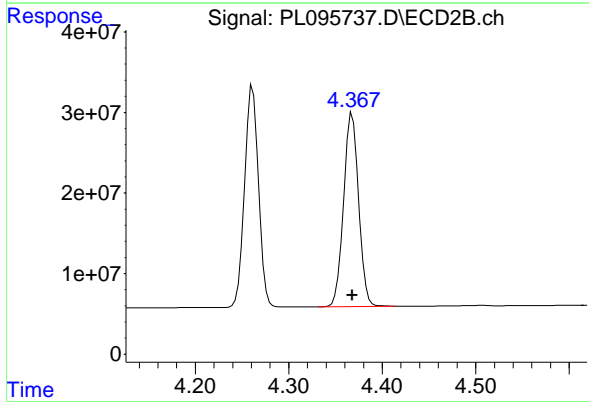
R.T.: 4.083 min
 Delta R.T.: 0.000 min
 Response: 280589099
 Conc: 50.00 ng/ml



#5 Aldrin

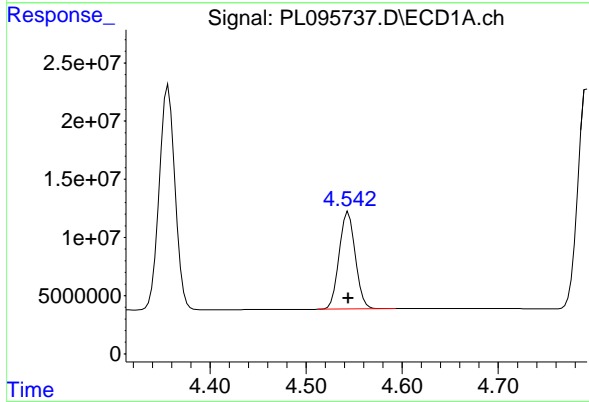
R.T.: 5.297 min
 Delta R.T.: 0.000 min
 Response: 210558537
 Conc: 50.00 ng/ml

Instrument :
 ECD_L
 ClientSampleId :
 PSTDICC050



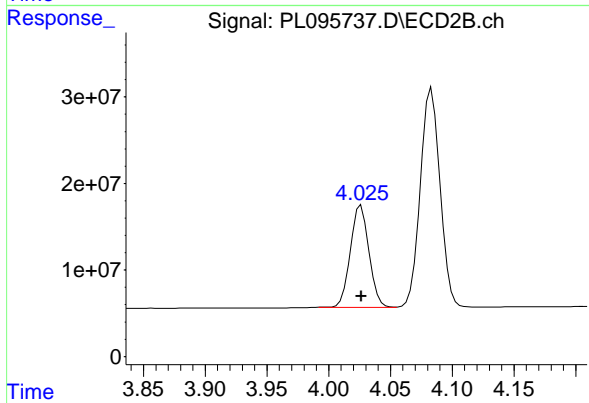
#5 Aldrin

R.T.: 4.368 min
 Delta R.T.: 0.000 min
 Response: 267962633
 Conc: 50.00 ng/ml



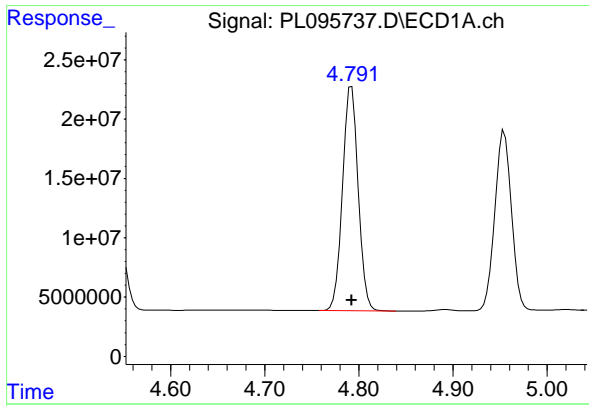
#6 beta-BHC

R.T.: 4.544 min
 Delta R.T.: 0.000 min
 Response: 96510671
 Conc: 50.00 ng/ml



#6 beta-BHC

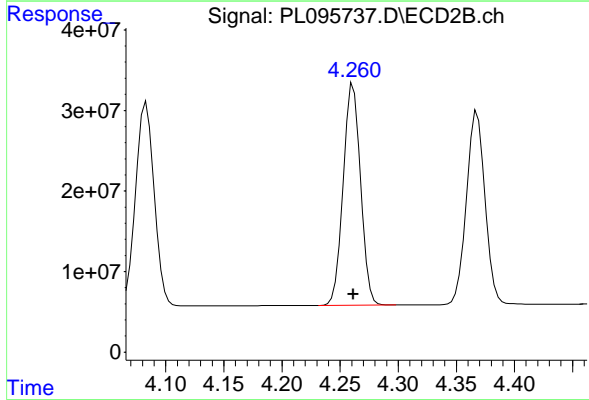
R.T.: 4.026 min
 Delta R.T.: 0.000 min
 Response: 123564721
 Conc: 50.00 ng/ml



#7 delta-BHC

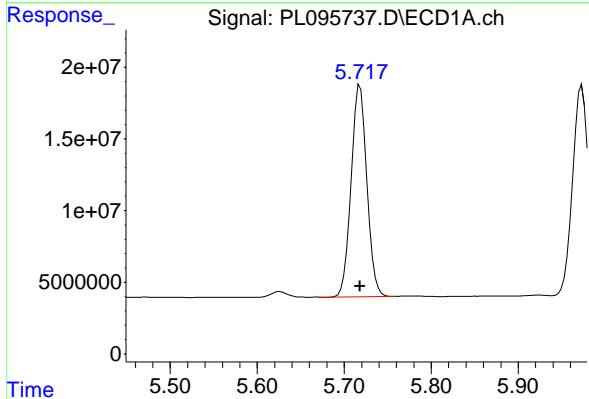
R.T.: 4.792 min
 Delta R.T.: 0.000 min
 Response: 219198950
 Conc: 50.00 ng/ml

Instrument :
 ECD_L
 ClientSampleId :
 PSTDICC050



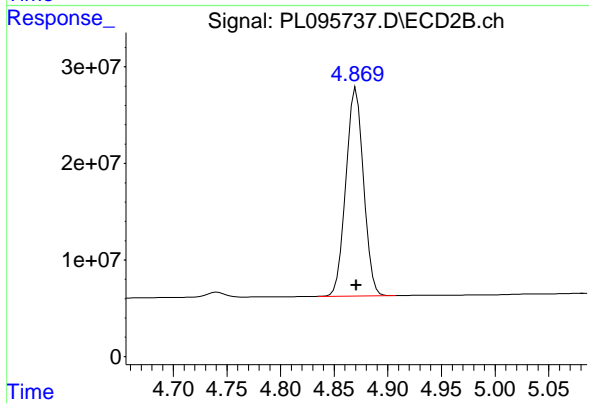
#7 delta-BHC

R.T.: 4.261 min
 Delta R.T.: 0.000 min
 Response: 285012736
 Conc: 50.00 ng/ml



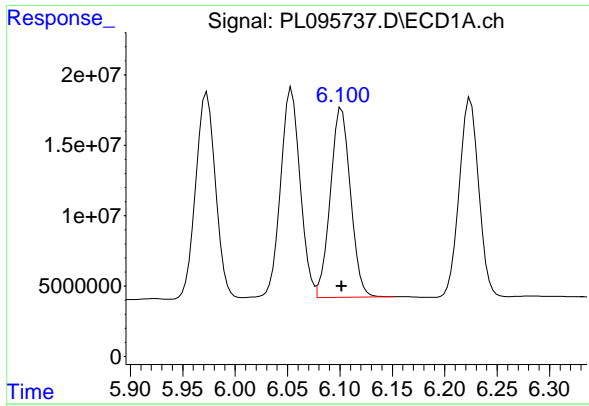
#8 Heptachlor epoxide

R.T.: 5.718 min
 Delta R.T.: 0.000 min
 Response: 186554209
 Conc: 50.00 ng/ml



#8 Heptachlor epoxide

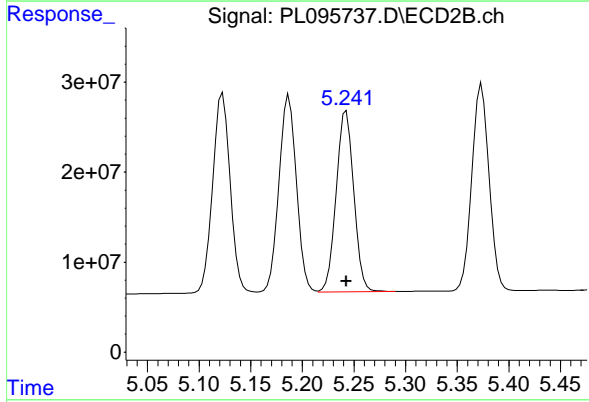
R.T.: 4.871 min
 Delta R.T.: 0.000 min
 Response: 247190529
 Conc: 50.00 ng/ml



#9 Endosulfan I

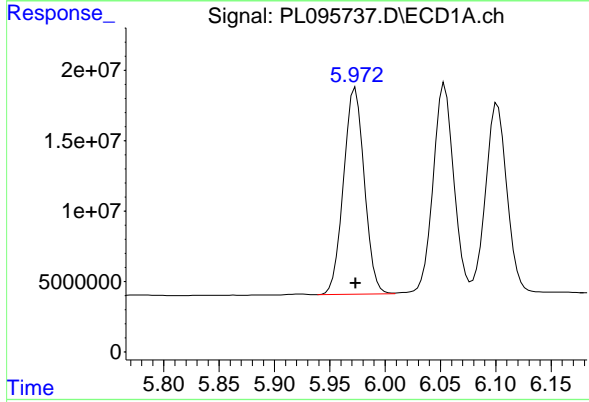
R.T.: 6.102 min
 Delta R.T.: 0.000 min
 Response: 179698543
 Conc: 50.00 ng/ml

Instrument :
 ECD_L
 ClientSampleId :
 PSTDICC050



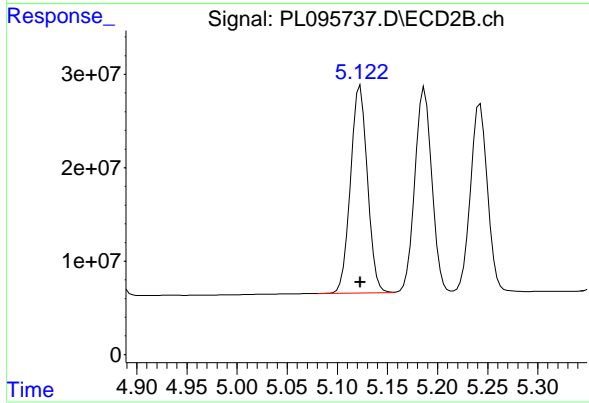
#9 Endosulfan I

R.T.: 5.243 min
 Delta R.T.: 0.000 min
 Response: 238386455
 Conc: 50.00 ng/ml



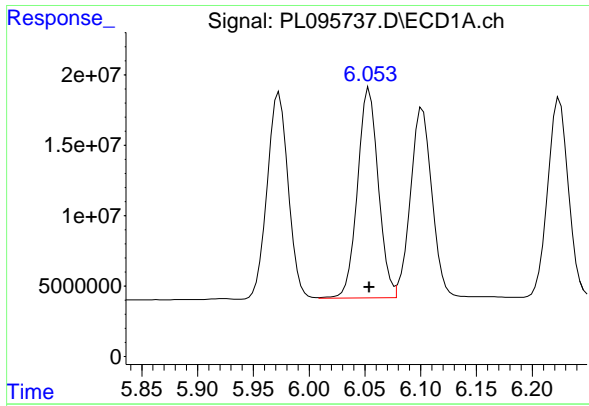
#10 gamma-Chlordane

R.T.: 5.973 min
 Delta R.T.: 0.000 min
 Response: 192265421
 Conc: 50.00 ng/ml



#10 gamma-Chlordane

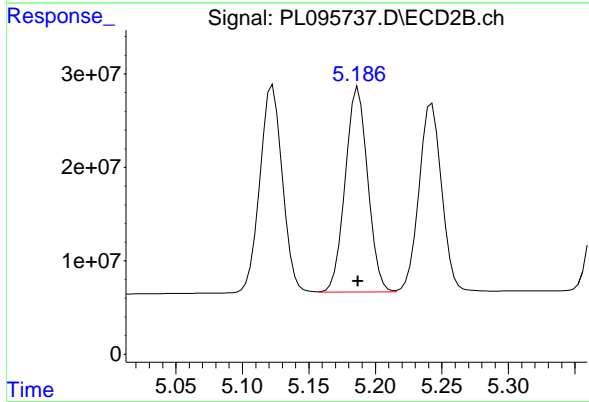
R.T.: 5.123 min
 Delta R.T.: 0.000 min
 Response: 261644179
 Conc: 50.00 ng/ml



#11 alpha-Chlordane

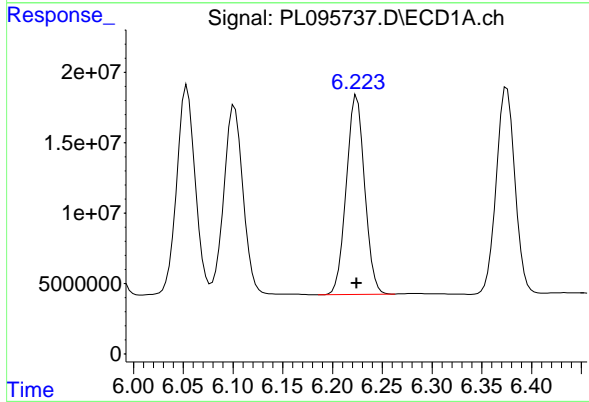
R.T.: 6.054 min
 Delta R.T.: 0.000 min
 Response: 193496576
 Conc: 50.00 ng/ml

Instrument :
 ECD_L
 ClientSampleId :
 PSTDICC050



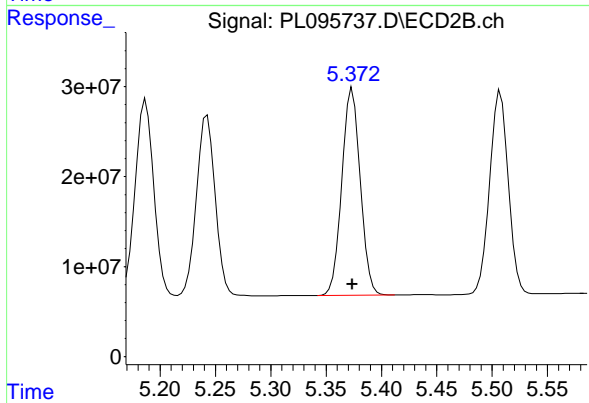
#11 alpha-Chlordane

R.T.: 5.187 min
 Delta R.T.: 0.000 min
 Response: 258481817
 Conc: 50.00 ng/ml



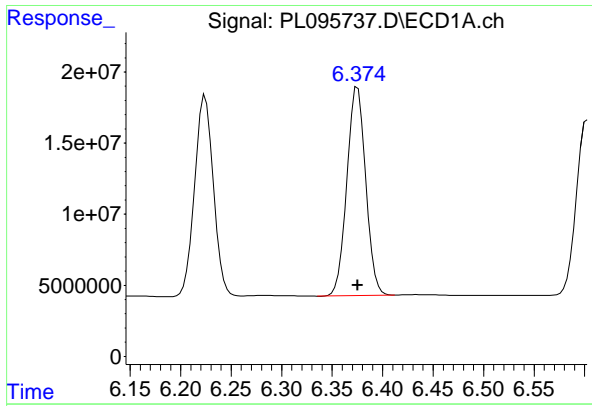
#12 4,4'-DDE

R.T.: 6.224 min
 Delta R.T.: 0.000 min
 Response: 181584448
 Conc: 50.00 ng/ml



#12 4,4'-DDE

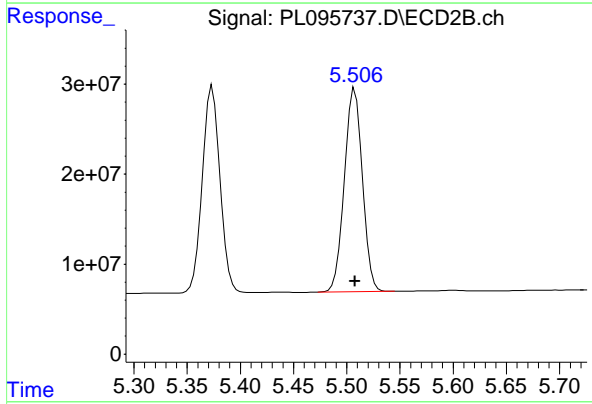
R.T.: 5.374 min
 Delta R.T.: 0.000 min
 Response: 267148181
 Conc: 50.00 ng/ml



#13 Dieldrin

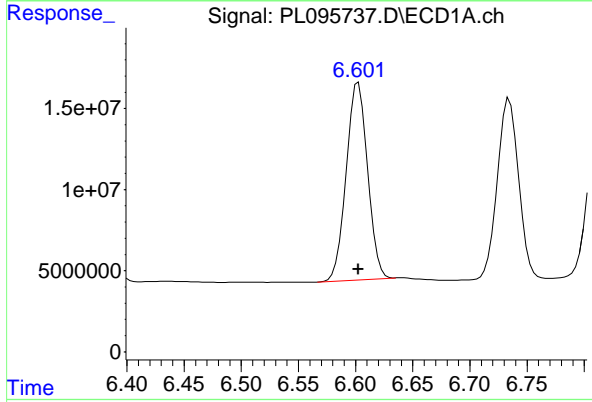
R.T.: 6.375 min
 Delta R.T.: 0.000 min
 Response: 190690949
 Conc: 50.00 ng/ml

Instrument :
 ECD_L
 ClientSampleId :
 PSTDICC050



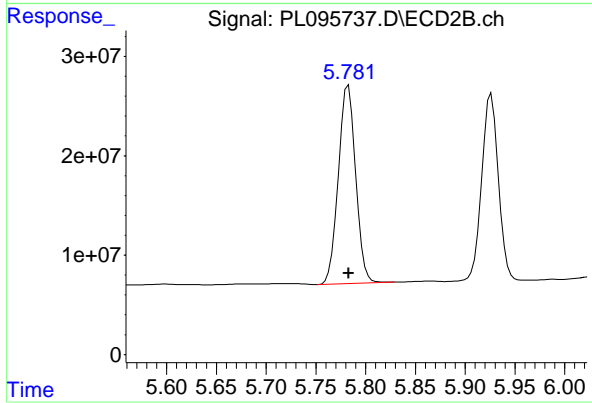
#13 Dieldrin

R.T.: 5.508 min
 Delta R.T.: 0.000 min
 Response: 264824705
 Conc: 50.00 ng/ml



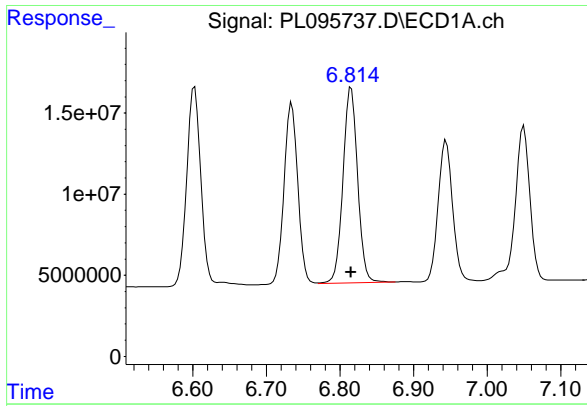
#14 Endrin

R.T.: 6.602 min
 Delta R.T.: 0.000 min
 Response: 159265435
 Conc: 50.00 ng/ml



#14 Endrin

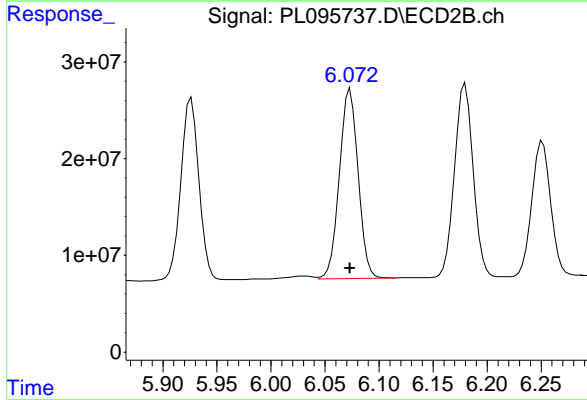
R.T.: 5.783 min
 Delta R.T.: 0.000 min
 Response: 242056180
 Conc: 50.00 ng/ml



#15 Endosulfan II

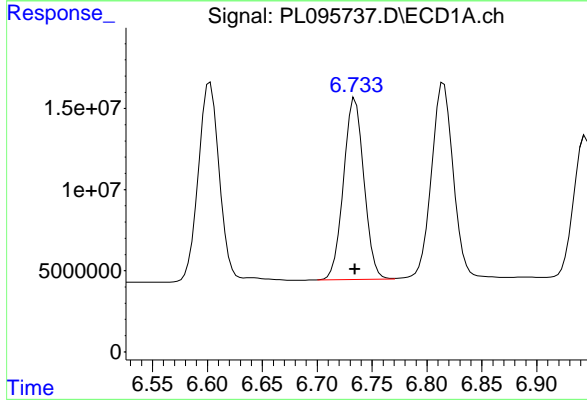
R.T.: 6.815 min
 Delta R.T.: 0.000 min
 Response: 166277261
 Conc: 50.00 ng/ml

Instrument :
 ECD_L
 ClientSampleId :
 PSTDICC050



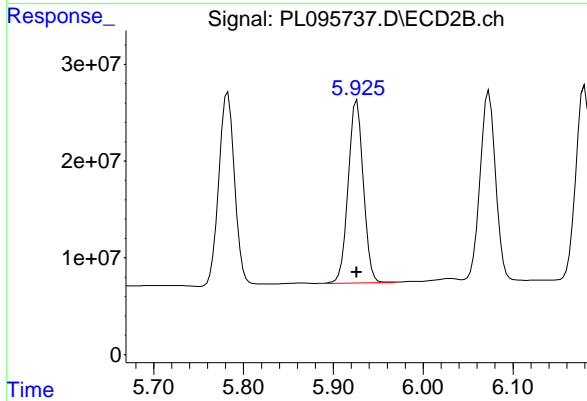
#15 Endosulfan II

R.T.: 6.073 min
 Delta R.T.: 0.000 min
 Response: 236094956
 Conc: 50.00 ng/ml



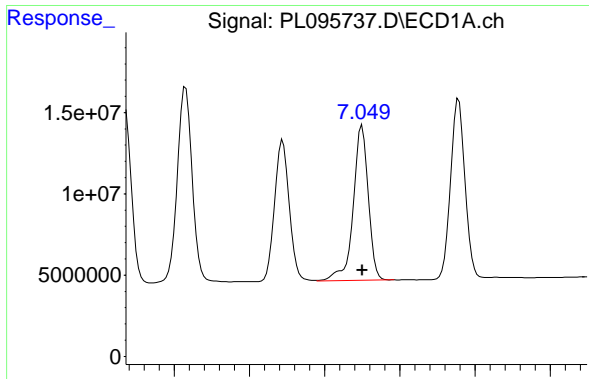
#16 4,4'-DDD

R.T.: 6.734 min
 Delta R.T.: 0.000 min
 Response: 144532800
 Conc: 50.00 ng/ml



#16 4,4'-DDD

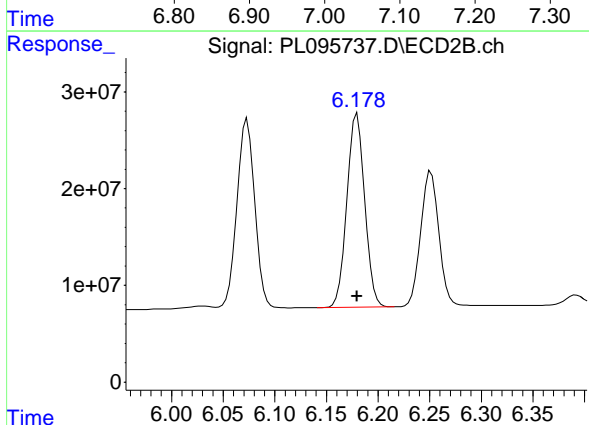
R.T.: 5.926 min
 Delta R.T.: 0.000 min
 Response: 220218849
 Conc: 50.00 ng/ml



#17 4,4' -DDT

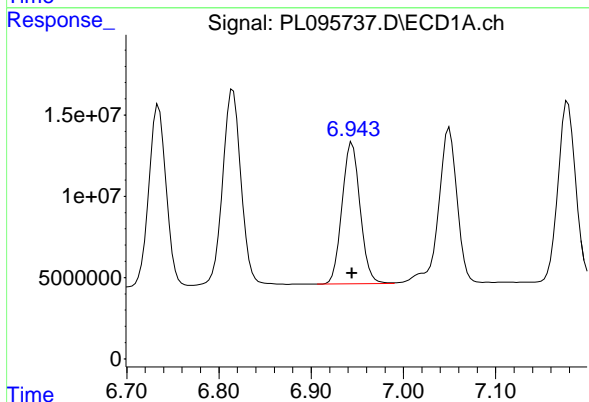
R.T.: 7.050 min
 Delta R.T.: 0.000 min
 Response: 132530344
 Conc: 50.00 ng/ml

Instrument :
 ECD_L
 ClientSampleId :
 PSTDICC050



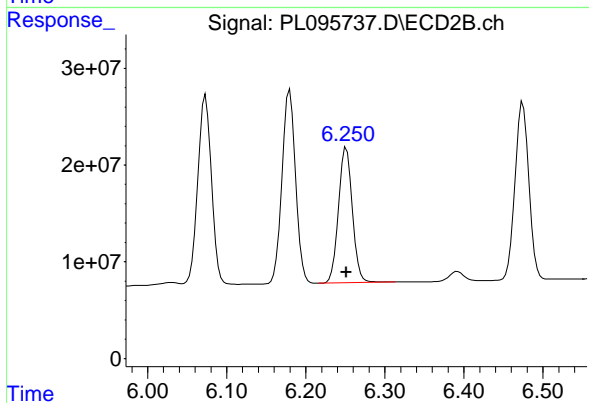
#17 4,4' -DDT

R.T.: 6.180 min
 Delta R.T.: 0.000 min
 Response: 240287375
 Conc: 50.00 ng/ml



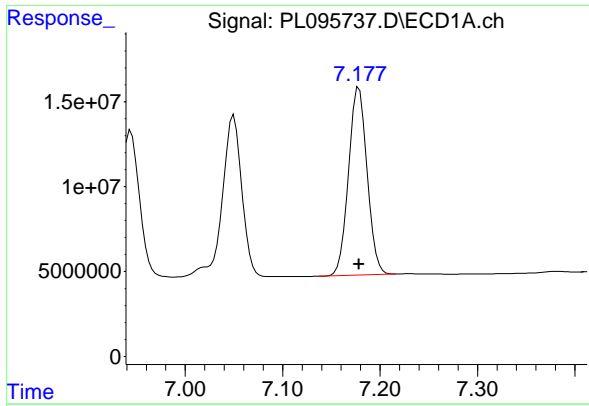
#18 Endrin aldehyde

R.T.: 6.944 min
 Delta R.T.: 0.000 min
 Response: 118284836
 Conc: 50.00 ng/ml



#18 Endrin aldehyde

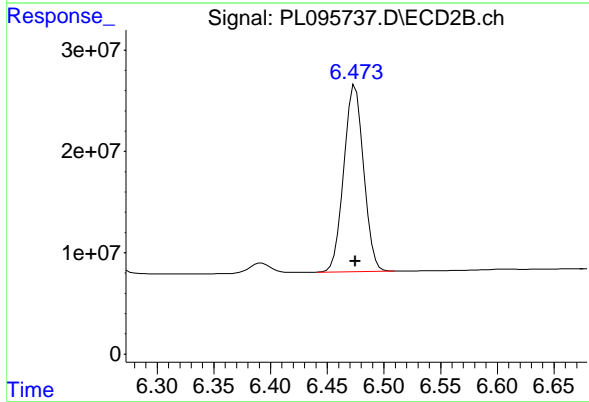
R.T.: 6.251 min
 Delta R.T.: 0.000 min
 Response: 170905177
 Conc: 50.00 ng/ml



#19 Endosulfan Sulfate

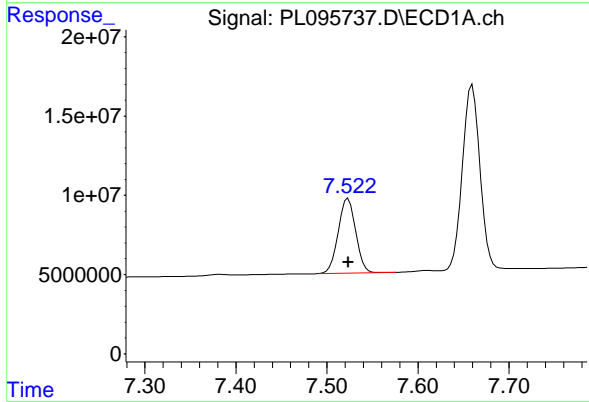
R.T.: 7.178 min
 Delta R.T.: 0.000 min
 Response: 146327614
 Conc: 50.00 ng/ml

Instrument :
 ECD_L
 ClientSampleId :
 PSTDICC050



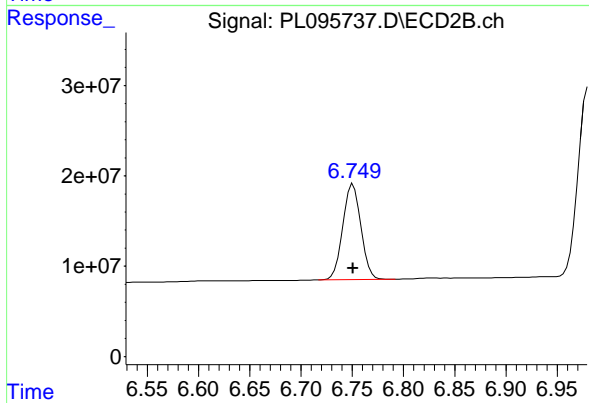
#19 Endosulfan Sulfate

R.T.: 6.475 min
 Delta R.T.: 0.000 min
 Response: 223759193
 Conc: 50.00 ng/ml



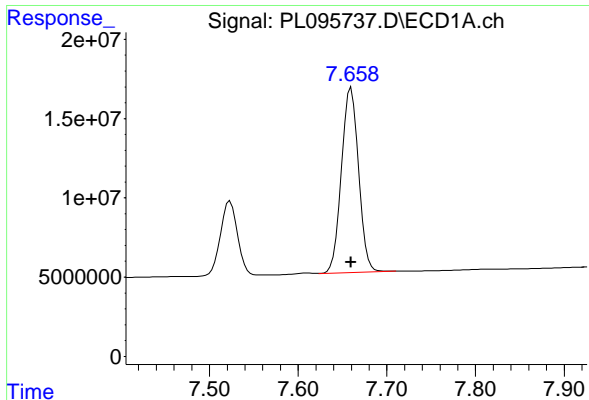
#20 Methoxychlor

R.T.: 7.523 min
 Delta R.T.: 0.000 min
 Response: 63073290
 Conc: 50.00 ng/ml



#20 Methoxychlor

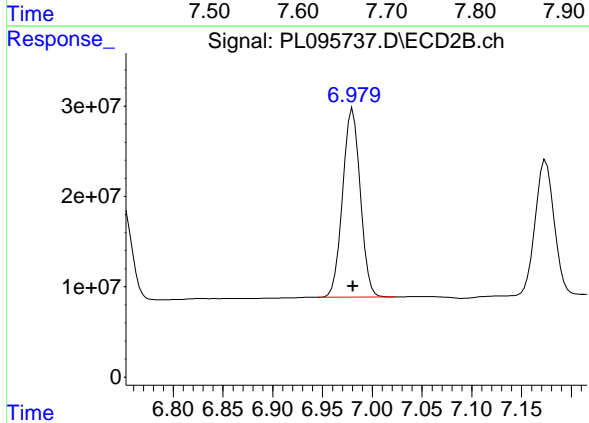
R.T.: 6.751 min
 Delta R.T.: 0.000 min
 Response: 129624467
 Conc: 50.00 ng/ml



#21 Endrin ketone

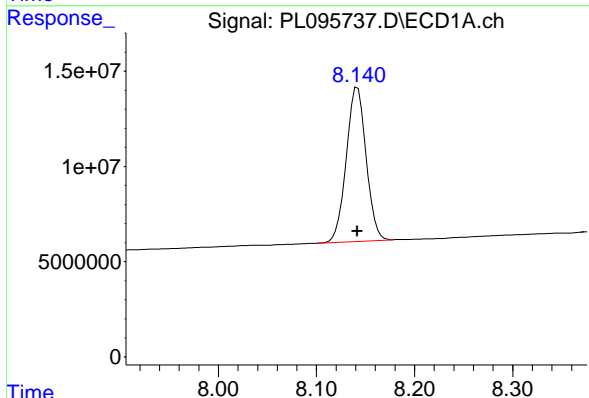
R.T.: 7.660 min
 Delta R.T.: 0.000 min
 Response: 156794752
 Conc: 50.00 ng/ml

Instrument : ECD_L
 ClientSampleId : PSTDICC050



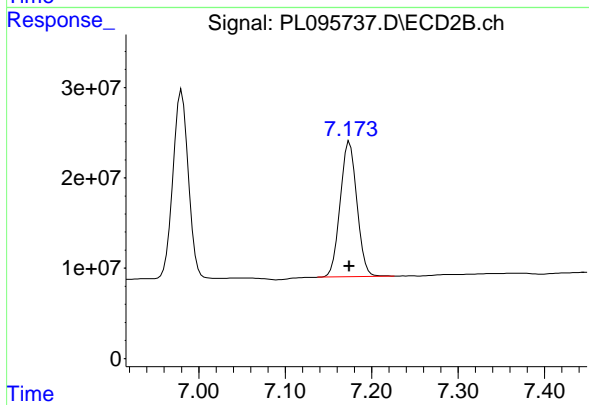
#21 Endrin ketone

R.T.: 6.980 min
 Delta R.T.: 0.000 min
 Response: 258169437
 Conc: 50.00 ng/ml



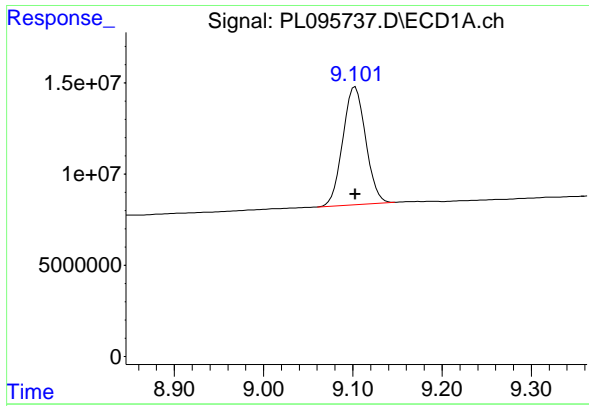
#22 Mirex

R.T.: 8.142 min
 Delta R.T.: 0.000 min
 Response: 113614693
 Conc: 50.00 ng/ml



#22 Mirex

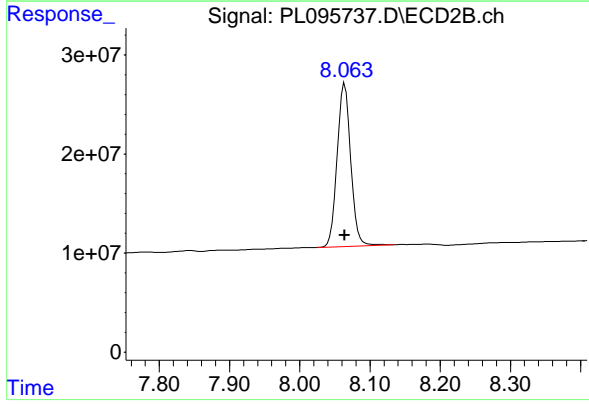
R.T.: 7.174 min
 Delta R.T.: 0.000 min
 Response: 199481332
 Conc: 50.00 ng/ml



#28 Decachlorobiphenyl

R.T.: 9.103 min
 Delta R.T.: 0.000 min
 Response: 115217414
 Conc: 50.00 ng/ml

Instrument :
 ECD_L
 ClientSampleId :
 PSTDICC050



#28 Decachlorobiphenyl

R.T.: 8.064 min
 Delta R.T.: 0.000 min
 Response: 221205876
 Conc: 50.00 ng/ml