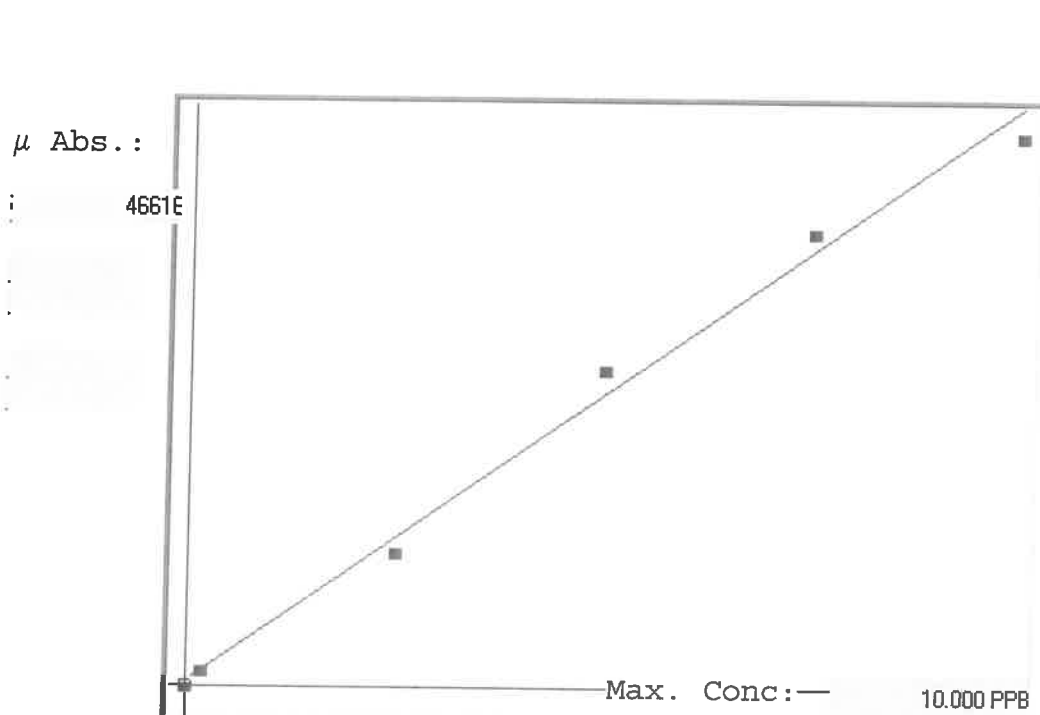


LB135943

7471B

INSTRUMENT ID: CV1



A= 0.0000e+000

B= 2.0595e-004

C= -8.4496e-002

Rho= 0.9961807

Accept=Accepted

Std ID	Conc.	Calc.	Dev.	Mean	SD or %RSD	Rep 1	Rep 2	Rep 3	Rep 4	Rep 5	0/00
0.0	0.000	-0.061	-0.061	115	0.000	115					
0.2	0.200	0.197	-0.003	1367	0.0 %	1367					
2.5	2.500	2.251	-0.249	11341	0.0 %	11341					
5.0	5.000	5.454	0.454	26892	0.0 %	26892					
7.5	7.500	7.842	0.342	38488	0.0 %	38488					
10.0	10.000	9.516	-0.484	46616	0.0 %	46616					

0/00
12
16
9
6
5

LB13543 INSTRUMENT ID : CV1

Method: 7471B

Operator: Admin

Date of Analysis: 29 May 2025 10:40:03

Sample ID	Extended ID	μ Abs.	Conc.	Std Conc	Method	Units	Date	Type	Type
0.0 - 1	50	115	-	0.0000	7471B	PPB	29 May 2025 10:53:23	S	Std
0.2 - 1	50.2	1367	-	0.2000	7471B	PPB	29 May 2025 10:55:40	S	Std
2.5 - 1	52.5	11341	-	2.5000	7471B	PPB	29 May 2025 10:57:57	S	Std
5.0 - 1	55	26892	-	5.0000	7471B	PPB	29 May 2025 11:10:25	S	Std
7.5 - 1	52.5	38488	-	7.5000	7471B	PPB	29 May 2025 11:12:44	S	Std
10.0 - 1	52	46616	-	10.0000	7471B	PPB	29 May 2025 11:15:24	S	Std
ICV21 - 1	ICV21	19052	3.8393	-	7471B	PPB	29 May 2025 11:18:20	U	SMPL
ICB21 - 1	ICB21	171	-0.0493	-	7471B	PPB	29 May 2025 11:20:35	U	SMPL
CCV76 - 1	CCV76	23874	4.8325	-	7471B	PPB	29 May 2025 11:22:52	U	SMPL
CCB76 - 1	CCB76	259	-0.0312	-	7471B	PPB	29 May 2025 11:27:46	U	SMPL
CRA - 1	CRA	1465	0.2172	-	7471B	PPB	29 May 2025 11:38:10	U	SMPL
HighStd - 1	HighStd	45896	9.3680	-	7471B	PPB	29 May 2025 11:45:44	U	SMPL
ChkStd - 1	ChkStd	31902	6.4858	-	7471B	PPB	29 May 2025 11:50:51	U	SMPL
PB168173BL - 1	PB168173BL	283	-0.0262	-	7471B	PPB	29 May 2025 11:55:53	U	SMPL
PB168173BS - 1	PB168173BS	17394	3.4979	-	7471B	PPB	29 May 2025 11:58:09	U	SMPL
Q1872-10 - 1	HW0425-PT-MET-SOIL	739022	HIGH	-	7471B	PPB	29 May 2025 12:00:25	X	
Q2085-01 - 1	SC-4-SED-051525	-385	-0.1638	-	7471B	PPB	29 May 2025 12:02:19	U	SMPL
Q2085-02 - 1	SC-3-SED-051525	765	0.0731	-	7471B	PPB	29 May 2025 12:05:29	U	SMPL
Q2085-03 - 1	SC-2-SED-051525	-73	-0.0995	-	7471B	PPB	29 May 2025 12:07:48	U	SMPL
Q2085-04 - 1	SC-1-SED-051625	609	0.0409	-	7471B	PPB	29 May 2025 12:10:05	U	SMPL
CCV77 - 1	CCV77	25128	5.0907	-	7471B	PPB	29 May 2025 12:25:30	U	SMPL
CCB77 - 1	CCB77	211	-0.0410	-	7471B	PPB	29 May 2025 12:30:37	U	SMPL
Q2085-04DUP - 1	SC-1-SED-051625DUP	577	0.0343	-	7471B	PPB	29 May 2025 12:32:51	U	SMPL
Q2085-05 - 1	Q2085-04MS	20738	4.1866	-	7471B	PPB	29 May 2025 12:43:33	U	SMPL
Q2085-06 - 1	Q2085-04MSD	21927	4.4315	-	7471B	PPB	29 May 2025 12:45:50	U	SMPL
Q2085-07 - 1	SC-COMP-SED-051625	780	0.0761	-	7471B	PPB	29 May 2025 12:48:09	U	SMPL
Q2085-08 - 1	DUPE-1-SC	748	0.0696	-	7471B	PPB	29 May 2025 12:50:27	U	SMPL
Q2127-01 - 1	COMP-1	2646	0.4605	-	7471B	PPB	29 May 2025 12:52:45	U	SMPL
Q2127-11 - 1	COMP-2	1540	0.2327	-	7471B	PPB	29 May 2025 12:55:03	U	SMPL
Q2085-04LX5 - 1		-55	-0.0958	-	7471B	PPB	29 May 2025 12:57:23	U	SMPL
Q2085-04A - 1		21076	4.2562	-	7471B	PPB	29 May 2025 12:59:41	U	SMPL
CCV78 - 1	CCV78	25487	5.1647	-	7471B	PPB	29 May 2025 13:01:57	U	SMPL
CCB78 - 1	CCB78	7	-0.0831	-	7471B	PPB	29 May 2025 13:04:15	U	SMPL
Q1872-10DLX25 - 1	HW0425-PT-MET-SOIL	64634	13.2271	-	7471B	PPB	29 May 2025 13:06:34	U	SMPL
Q1872-10DL2X50 - 1	HW0425-PT-MET-SOIL	32513	6.6117	-	7471B	PPB	29 May 2025 13:08:49	U	SMPL
CCV7 - 1	CCV7	25937	5.2573	-	7471B	PPB	29 May 2025 13:19:41	U	SMPL
CCB79 - 1	CCB79	233	-0.0365	-	7471B	PPB	29 May 2025 13:22:01	U	SMPL