

Data Path : Z:\pestpcbsrv\HPCHEM1\ECD_O\Data\P0052225\
 Data File : P0111284.D
 Signal(s) : Signal #1: ECD1A.ch Signal #2: ECD2B.ch
 Acq On : 22 May 2025 13:29
 Operator : YP/AJ
 Sample : Q2100-03
 Misc :
 ALS Vial : 13 Sample Multiplier: 1

Instrument :
 ECD_O
 ClientSampleId :
 TP-21

Integration File signal 1: autoint1.e
 Integration File signal 2: autoint2.e
 Quant Time: May 22 13:57:35 2025
 Quant Method : Z:\pestpcbsrv\HPCHEM1\ECD_O\methods\P0051525.M
 Quant Title : GC EXTRACTABLES
 QLast Update : Thu May 15 07:11:53 2025
 Response via : Initial Calibration
 Integrator: ChemStation

Volume Inj. : 2 µl
 Signal #1 Phase : ZB-MR1 Signal #2 Phase: ZB-MR2
 Signal #1 Info : 30Mx0.32mmx 0.50µ Signal #2 Info : 30M x 0.32mm x 0.25µm

Compound	RT#1	RT#2	Resp#1	Resp#2	ng/ml	ng/ml

System Monitoring Compounds						
1) SA Tetrachlo...	3.679	3.678	122.3E6	103.8E6	20.793	19.035
2) SA Decachlor...	8.722	8.672	83694156	33023854	16.211	17.849

Target Compounds

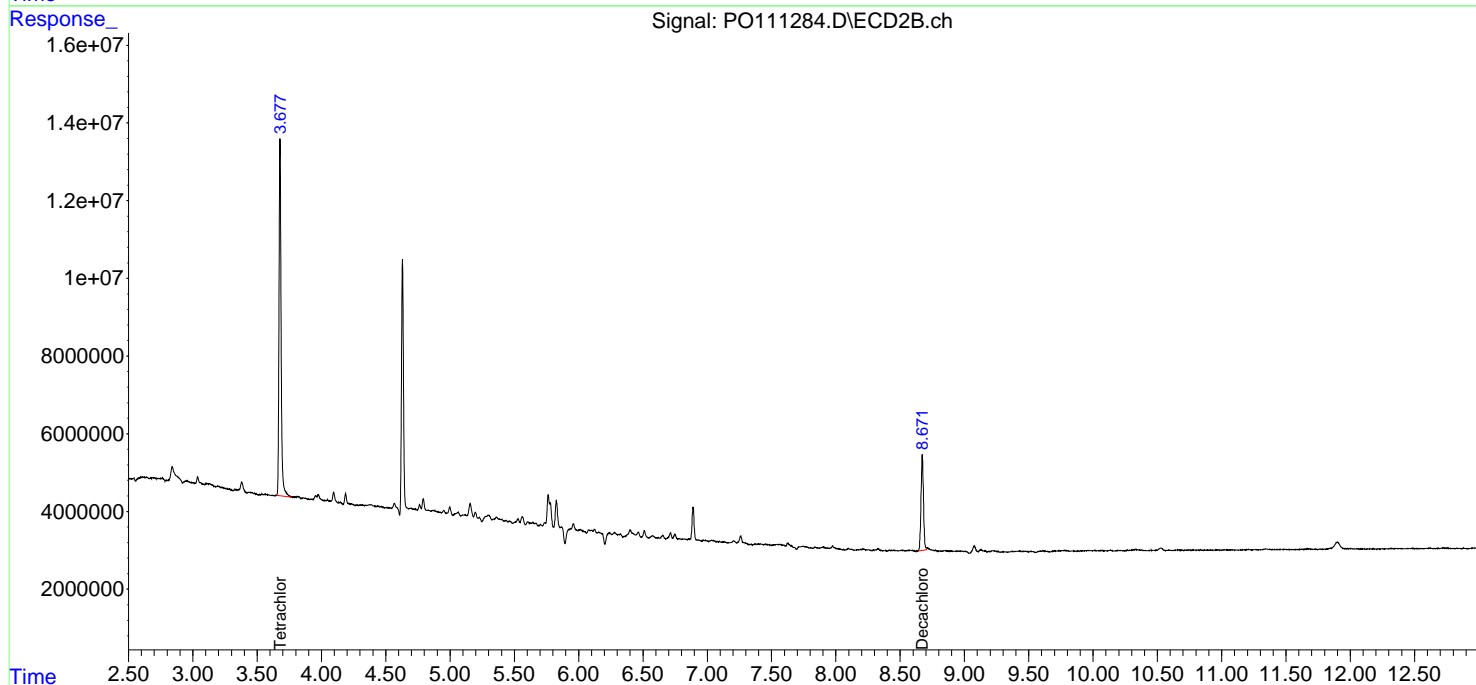
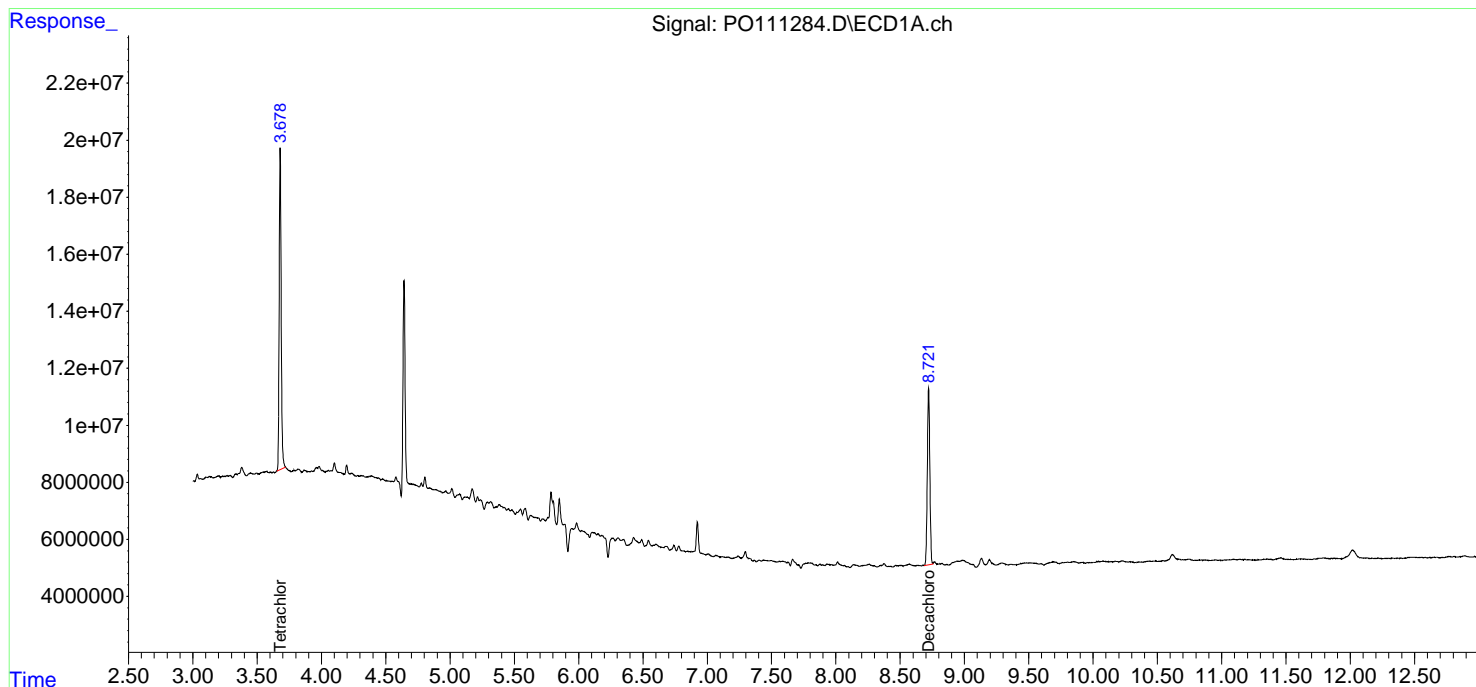
(f)=RT Delta > 1/2 Window (#)=Amounts differ by > 25% (m)=manual int.

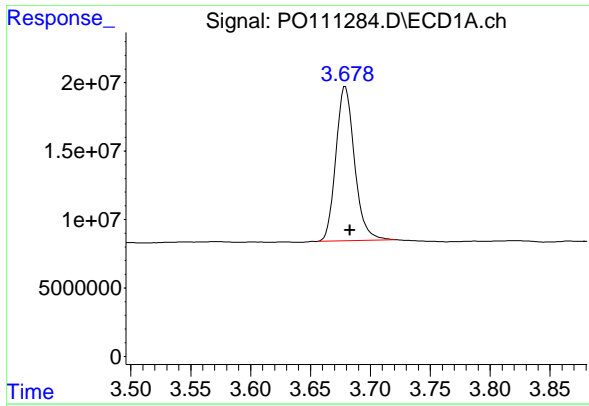
Data Path : Z:\pestpcbsrv\HPCHEM1\ECD_O\Data\PO052225\
 Data File : PO111284.D
 Signal(s) : Signal #1: ECD1A.ch Signal #2: ECD2B.ch
 Acq On : 22 May 2025 13:29
 Operator : YP/AJ
 Sample : Q2100-03
 Misc :
 ALS Vial : 13 Sample Multiplier: 1

Instrument :
 ECD_O
 ClientSampleId :
 TP-21

Integration File signal 1: autoint1.e
 Integration File signal 2: autoint2.e
 Quant Time: May 22 13:57:35 2025
 Quant Method : Z:\pestpcbsrv\HPCHEM1\ECD_O\methods\PO051525.M
 Quant Title : GC EXTRACTABLES
 QLast Update : Thu May 15 07:11:53 2025
 Response via : Initial Calibration
 Integrator: ChemStation

Volume Inj. : 2 µl
 Signal #1 Phase : ZB-MR1 Signal #2 Phase: ZB-MR2
 Signal #1 Info : 30Mx0.32mmx 0.50µm Signal #2 Info : 30M x 0.32mm x 0.25µm

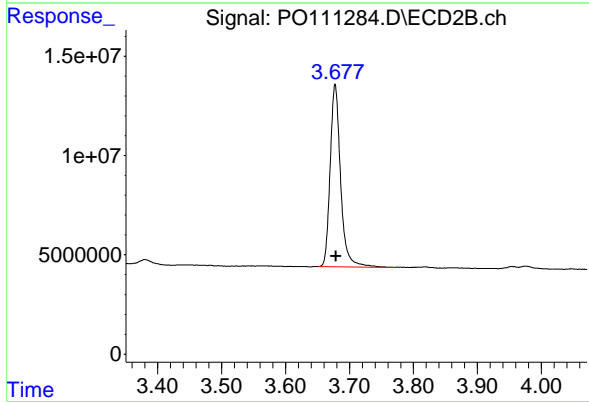




#1 Tetrachloro-m-xylene

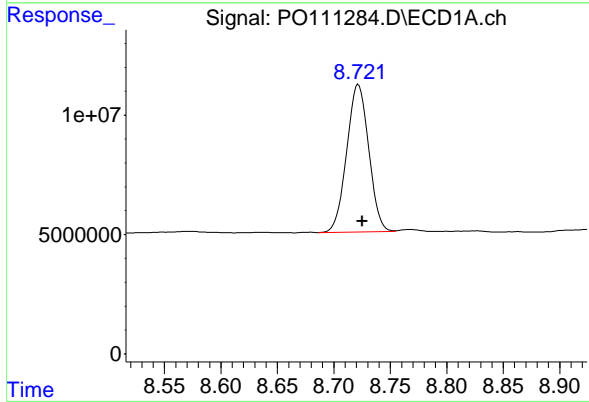
R.T.: 3.679 min
 Delta R.T.: -0.004 min
 Response: 122328412
 Conc: 20.79 ng/ml

Instrument :
 ECD_O
 ClientSampleId :
 TP-21



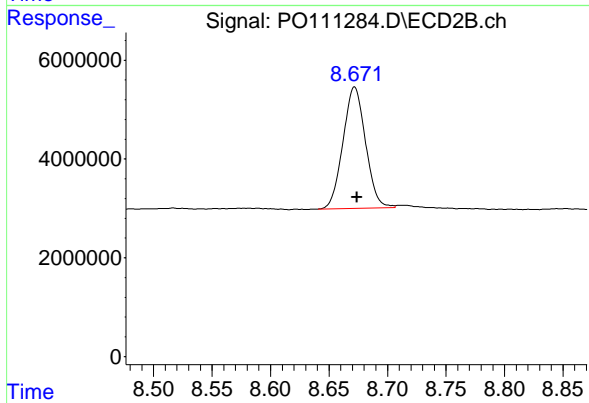
#1 Tetrachloro-m-xylene

R.T.: 3.678 min
 Delta R.T.: -0.001 min
 Response: 103769322
 Conc: 19.04 ng/ml



#2 Decachlorobiphenyl

R.T.: 8.722 min
 Delta R.T.: -0.003 min
 Response: 83694156
 Conc: 16.21 ng/ml



#2 Decachlorobiphenyl

R.T.: 8.672 min
 Delta R.T.: -0.002 min
 Response: 33023854
 Conc: 17.85 ng/ml