

Data Path : Z:\svoasrv\HPCHEM1\BNA_N\Data\BN052825\
 Data File : BN037108.D
 Acq On : 28 May 2025 14:17
 Operator : RC/JU
 Sample : PB168155BS
 Misc :
 ALS Vial : 8 Sample Multiplier: 1

Instrument :
 BNA_N
 ClientSampleId :
 PB168155BS

Manual Integrations
 APPROVED

Reviewed By :Rahul Chavli 05/29/2025
 Supervised By :Jagrut Upadhyay 05/29/2025

Quant Time: May 28 15:38:43 2025
 Quant Method : Z:\svoasrv\HPCHEM1\BNA_N\Methods\8270-SIM-BN051425.M
 Quant Title : ASP BNA STANDARDS FOR 5 POINT CALIBRATION
 QLast Update : Wed May 14 11:26:32 2025
 Response via : Initial Calibration

| Compound | R.T. | QIon | Response | Conc | Units | Dev(Min) | |
|-------------------------------|--------|------|----------|-------|-------|----------|--------|
| Internal Standards | | | | | | | |
| 1) 1,4-Dichlorobenzene-d4 | 7.611 | 152 | 1969 | 0.400 | ng | 0.00 | |
| 7) Naphthalene-d8 | 10.394 | 136 | 4930 | 0.400 | ng | -0.01 | |
| 13) Acenaphthene-d10 | 14.256 | 164 | 2429 | 0.400 | ng | -0.01 | |
| 19) Phenanthrene-d10 | 17.009 | 188 | 4326 | 0.400 | ng | # 0.00 | |
| 29) Chrysene-d12 | 21.198 | 240 | 2746 | 0.400 | ng | 0.00 | |
| 35) Perylene-d12 | 23.398 | 264 | 2563 | 0.400 | ng | #-0.02 | |
| System Monitoring Compounds | | | | | | | |
| 4) 2-Fluorophenol | 5.206 | 112 | 1695 | 0.329 | ng | 0.00 | |
| 5) Phenol-d6 | 6.788 | 99 | 2029 | 0.314 | ng | 0.00 | |
| 8) Nitrobenzene-d5 | 8.760 | 82 | 1824 | 0.340 | ng | -0.01 | |
| 11) 2-Methylnaphthalene-d10 | 11.986 | 152 | 2653m | 0.382 | ng | -0.01 | |
| 14) 2,4,6-Tribromophenol | 15.755 | 330 | 337 | 0.316 | ng | -0.01 | |
| 15) 2-Fluorobiphenyl | 12.878 | 172 | 3875 | 0.348 | ng | -0.01 | |
| 27) Fluoranthene-d10 | 19.040 | 212 | 3574 | 0.301 | ng | 0.00 | |
| 31) Terphenyl-d14 | 19.649 | 244 | 2465 | 0.420 | ng | 0.00 | |
| Target Compounds | | | | | | | |
| 2) 1,4-Dioxane | 3.133 | 88 | 695 | 0.288 | ng | # 28 | Qvalue |
| 3) n-Nitrosodimethylamine | 3.444 | 42 | 1826 | 0.352 | ng | # 89 | |
| 6) bis(2-Chloroethyl)ether | 7.040 | 93 | 1934 | 0.326 | ng | 98 | |
| 9) Naphthalene | 10.436 | 128 | 4935 | 0.339 | ng | 98 | |
| 10) Hexachlorobutadiene | 10.725 | 225 | 1127 | 0.369 | ng | # 99 | |
| 12) 2-Methylnaphthalene | 12.062 | 142 | 2819 | 0.301 | ng | 98 | |
| 16) Acenaphthylene | 13.978 | 152 | 4684 | 0.396 | ng | 100 | |
| 17) Acenaphthene | 14.320 | 154 | 2750 | 0.356 | ng | 99 | |
| 18) Fluorene | 15.314 | 166 | 3561 | 0.351 | ng | 99 | |
| 20) 4,6-Dinitro-2-methylph... | 15.400 | 198 | 328 | 0.393 | ng | 92 | |
| 21) 4-Bromophenyl-phenylether | 16.202 | 248 | 1056 | 0.386 | ng | 90 | |
| 22) Hexachlorobenzene | 16.314 | 284 | 1185 | 0.405 | ng | 97 | |
| 23) Atrazine | 16.475 | 200 | 853 | 0.358 | ng | # 95 | |
| 24) Pentachlorophenol | 16.661 | 266 | 938 | 0.582 | ng | 99 | |
| 25) Phenanthrene | 17.046 | 178 | 5049 | 0.357 | ng | 99 | |
| 26) Anthracene | 17.133 | 178 | 4654 | 0.362 | ng | 100 | |
| 28) Fluoranthene | 19.073 | 202 | 4961 | 0.294 | ng | 98 | |
| 30) Pyrene | 19.435 | 202 | 4905 | 0.418 | ng | 100 | |
| 32) Benzo(a)anthracene | 21.189 | 228 | 3830 | 0.370 | ng | 99 | |
| 33) Chrysene | 21.233 | 228 | 4002 | 0.366 | ng | 99 | |
| 34) Bis(2-ethylhexyl)phtha... | 21.126 | 149 | 2238 | 0.352 | ng | 99 | |
| 36) Indeno(1,2,3-cd)pyrene | 25.602 | 276 | 4131 | 0.395 | ng | 98 | |
| 37) Benzo(b)fluoranthene | 22.740 | 252 | 3658 | 0.344 | ng | 96 | |
| 38) Benzo(k)fluoranthene | 22.784 | 252 | 3793 | 0.361 | ng | 94 | |
| 39) Benzo(a)pyrene | 23.304 | 252 | 3441 | 0.382 | ng | # 90 | |
| 40) Dibenzo(a,h)anthracene | 25.620 | 278 | 3166 | 0.388 | ng | 97 | |
| 41) Benzo(g,h,i)perylene | 26.275 | 276 | 3702 | 0.418 | ng | 98 | |

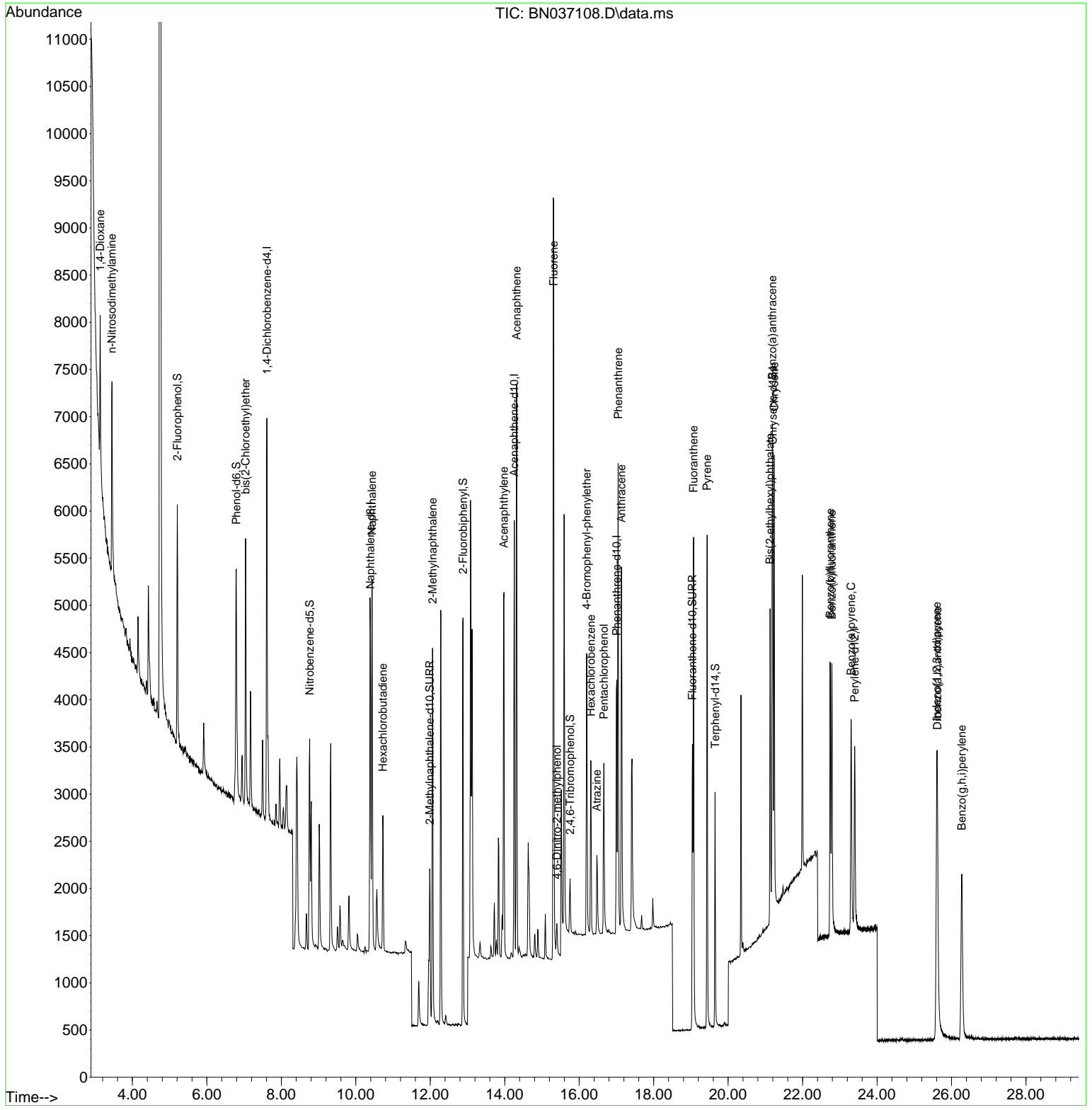
(#) = qualifier out of range (m) = manual integration (+) = signals summed

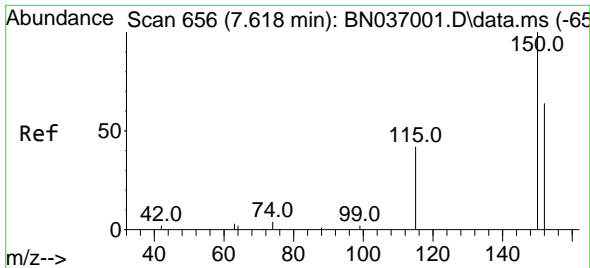
Data Path : Z:\svoasrv\HPCHEM1\BNA_N\Data\BN052825\
 Data File : BN037108.D
 Acq On : 28 May 2025 14:17
 Operator : RC/JU
 Sample : PB168155BS
 Misc :
 ALS Vial : 8 Sample Multiplier: 1

Instrument :
 BNA_N
ClientSampleId :
 PB168155BS

Quant Time: May 28 15:38:43 2025
 Quant Method : Z:\svoasrv\HPCHEM1\BNA_N\Methods\8270-SIM-BN051425.M
 Quant Title : ASP BNA STANDARDS FOR 5 POINT CALIBRATION
 QLast Update : Wed May 14 11:26:32 2025
 Response via : Initial Calibration

Manual Integrations
APPROVED
 Reviewed By :Rahul Chavli 05/29/2025
 Supervised By :Jagrut Upadhyay 05/29/2025





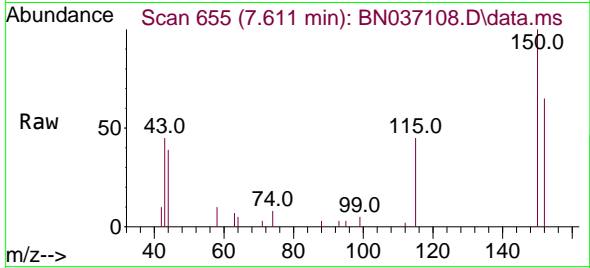
#1
 1,4-Dichlorobenzene-d4
 Concen: 0.400 ng
 RT: 7.611 min Scan# 61
 Delta R.T. -0.007 min
 Lab File: BN037108.D
 Acq: 28 May 2025 14:17

Instrument :

BNA_N

ClientSampleId :

PB168155BS



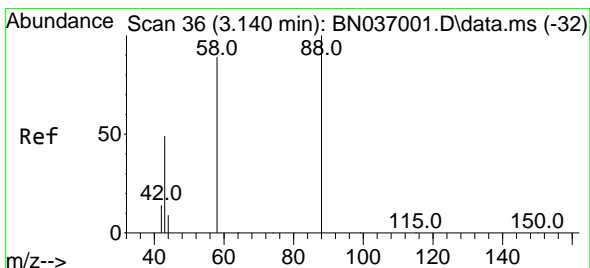
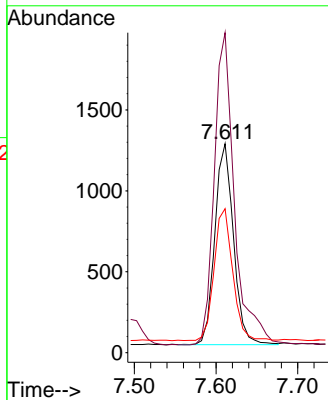
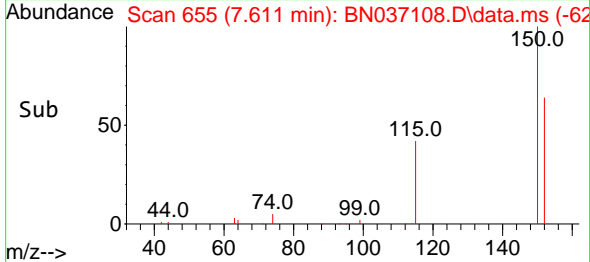
Tgt Ion: 152 Resp: 1969
 Ion Ratio Lower Upper
 152 100
 150 153.1 123.9 185.9
 115 68.9 55.8 83.8

Manual Integrations

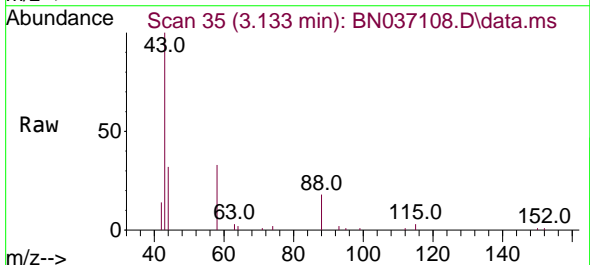
APPROVED

Reviewed By :Rahul Chavli 05/29/2025

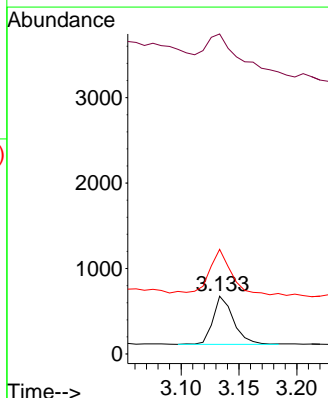
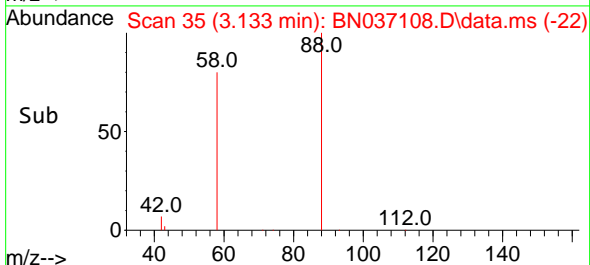
Supervised By :Jagrut Upadhyay 05/29/2025

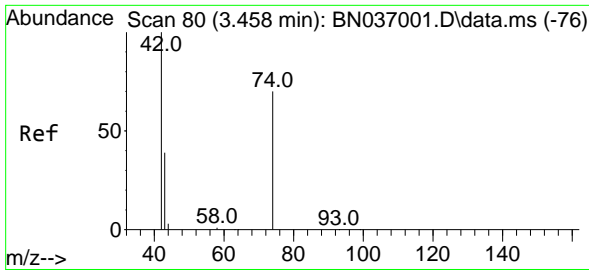


#2
 1,4-Dioxane
 Concen: 0.288 ng
 RT: 3.133 min Scan# 35
 Delta R.T. -0.007 min
 Lab File: BN037108.D
 Acq: 28 May 2025 14:17



Tgt Ion: 88 Resp: 695
 Ion Ratio Lower Upper
 88 100
 43 153.7 37.4 56.0#
 58 108.1 68.8 103.2#





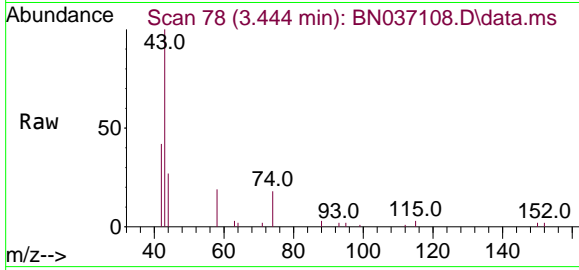
#3
 n-Nitrosodimethylamine
 Concen: 0.352 ng
 RT: 3.444 min Scan# 74
 Delta R.T. -0.014 min
 Lab File: BN037108.D
 Acq: 28 May 2025 14:17

Instrument :

BNA_N

Client Sample Id :

PB168155BS



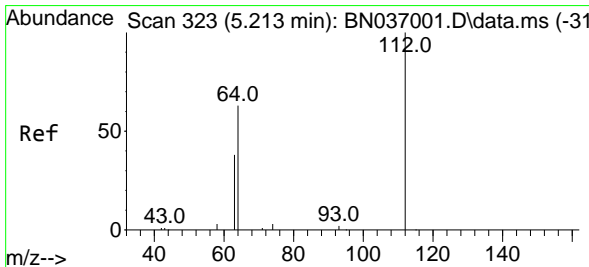
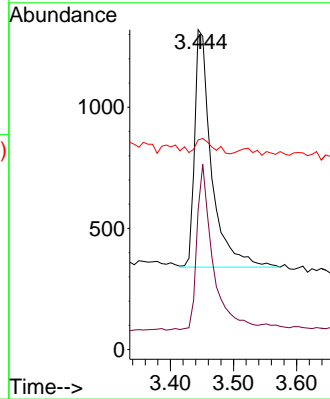
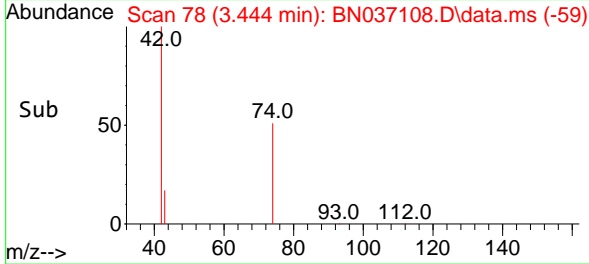
Tgt Ion: 42 Resp: 1820
 Ion Ratio Lower Upper
 42 100
 74 66.4 59.8 89.6
 44 6.8 11.9 17.9

Manual Integrations

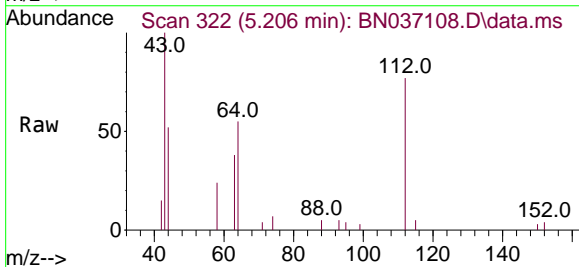
APPROVED

Reviewed By :Rahul Chavli 05/29/2025

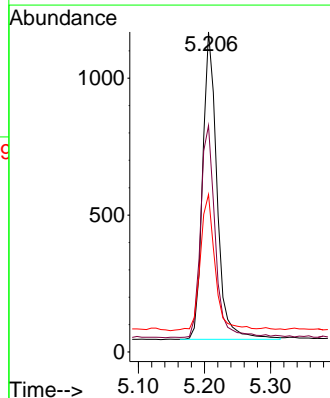
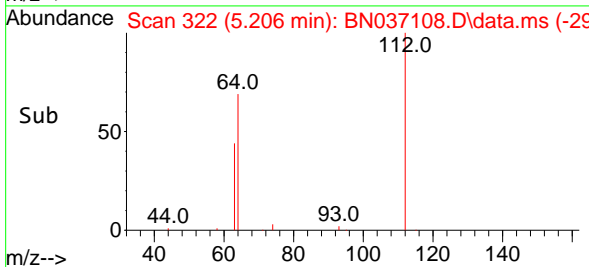
Supervised By :Jagrut Upadhyay 05/29/2025

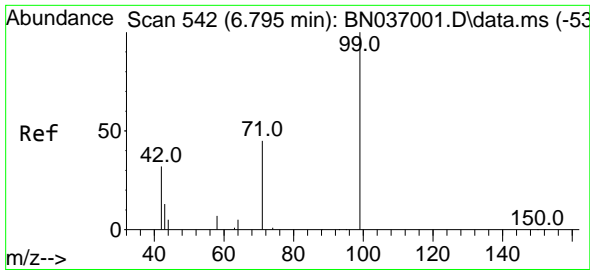


#4
 2-Fluorophenol
 Concen: 0.329 ng
 RT: 5.206 min Scan# 322
 Delta R.T. -0.007 min
 Lab File: BN037108.D
 Acq: 28 May 2025 14:17



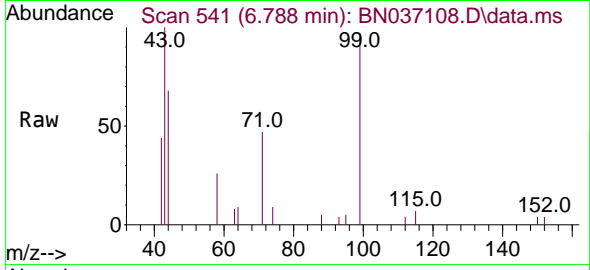
Tgt Ion:112 Resp: 1695
 Ion Ratio Lower Upper
 112 100
 64 70.3 55.7 83.5
 63 45.5 34.6 51.8





#5
 Phenol-d6
 Concen: 0.314 ng
 RT: 6.788 min Scan# 541
 Delta R.T. -0.007 min
 Lab File: BN037108.D
 Acq: 28 May 2025 14:17

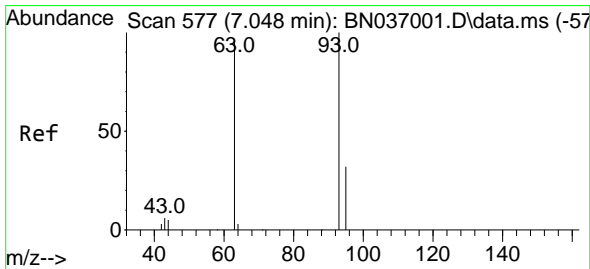
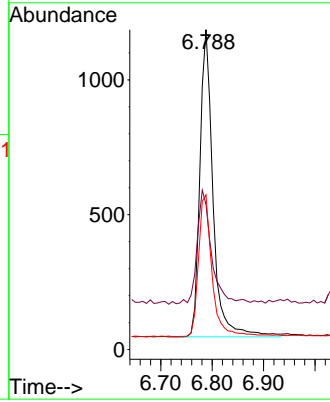
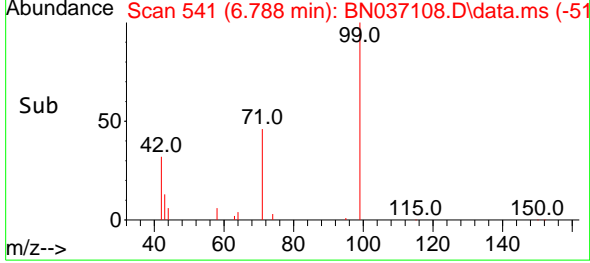
Instrument : BNA_N
 Client Sample Id : PB168155BS



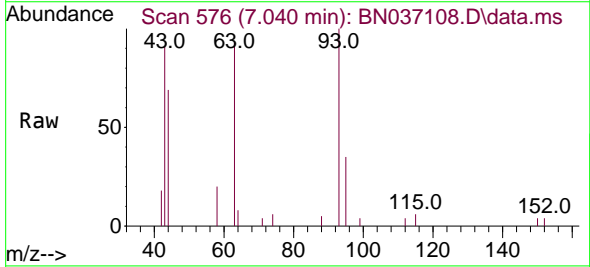
Tgt Ion: 99 Resp: 2029
 Ion Ratio Lower Upper
 99 100
 42 40.2 29.3 43.9
 71 48.2 35.7 53.5

Manual Integrations
 APPROVED

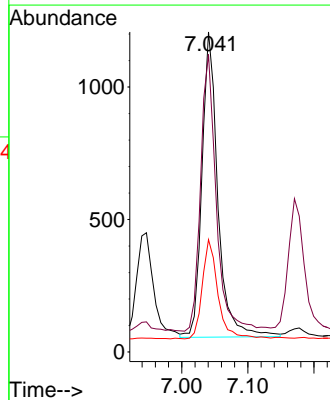
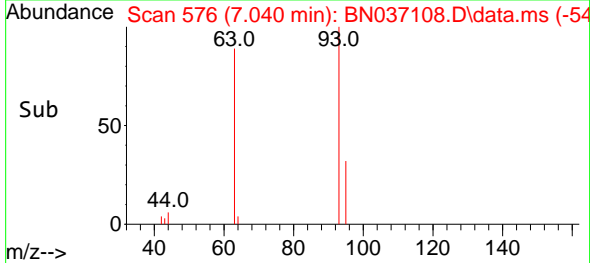
Reviewed By :Rahul Chavli 05/29/2025
 Supervised By :Jagrut Upadhyay 05/29/2025

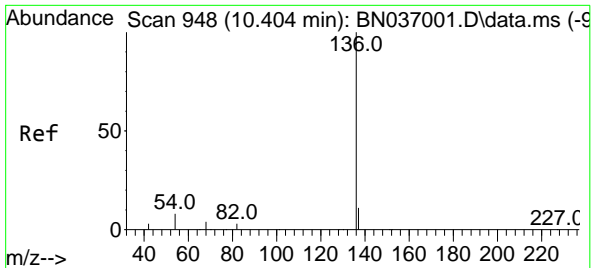


#6
 bis(2-Chloroethyl)ether
 Concen: 0.326 ng
 RT: 7.040 min Scan# 576
 Delta R.T. -0.007 min
 Lab File: BN037108.D
 Acq: 28 May 2025 14:17



Tgt Ion: 93 Resp: 1934
 Ion Ratio Lower Upper
 93 100
 63 89.4 70.1 105.1
 95 31.7 26.2 39.2





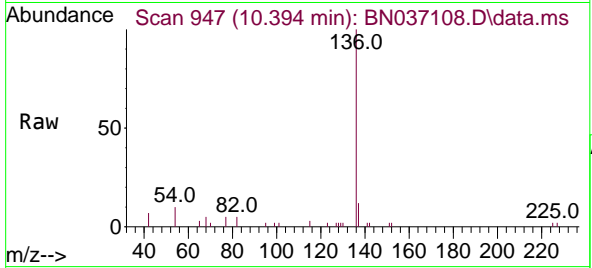
#7
 Naphthalene-d8
 Concen: 0.400 ng
 RT: 10.394 min Scan# 94
 Delta R.T. -0.011 min
 Lab File: BN037108.D
 Acq: 28 May 2025 14:17

Instrument :

BNA_N

ClientSampleId :

PB168155BS

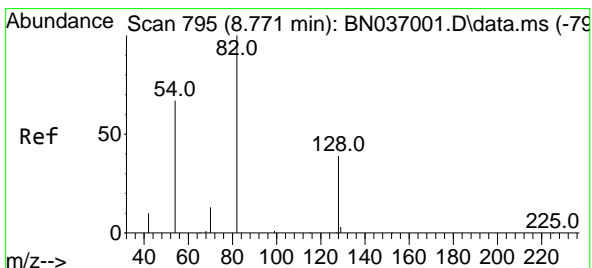
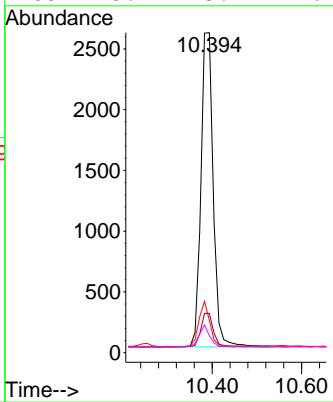
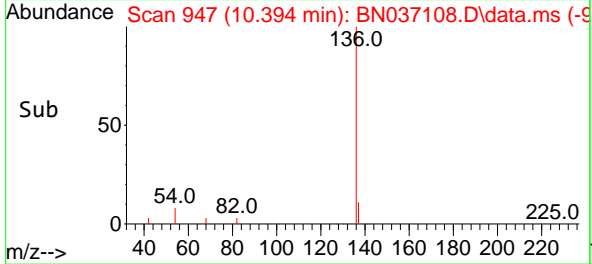


Tgt Ion:136 Resp: 4930
 Ion Ratio Lower Upper
 136 100
 137 12.3 10.4 15.6
 54 10.2 8.5 12.7
 68 5.4 5.1 7.7

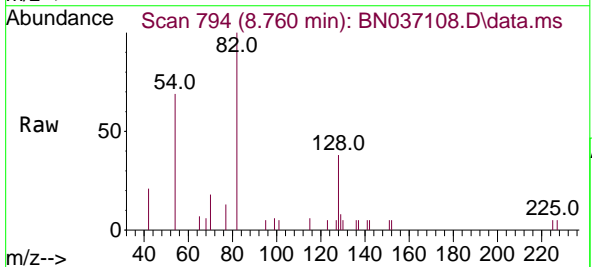
Manual Integrations

APPROVED

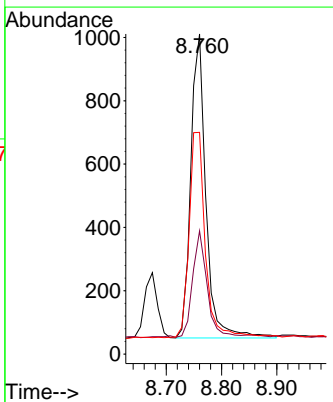
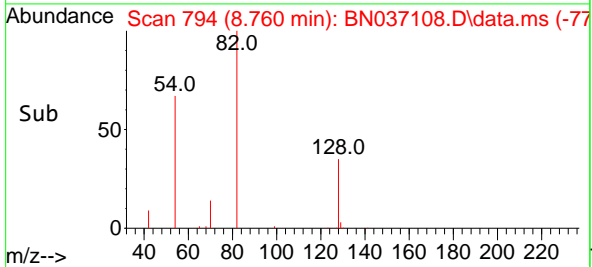
Reviewed By :Rahul Chavli 05/29/2025
 Supervised By :Jagrut Upadhyay 05/29/2025

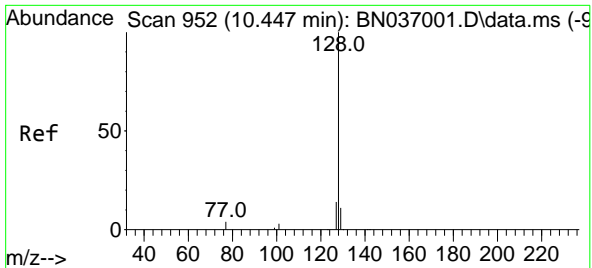


#8
 Nitrobenzene-d5
 Concen: 0.340 ng
 RT: 8.760 min Scan# 794
 Delta R.T. -0.011 min
 Lab File: BN037108.D
 Acq: 28 May 2025 14:17



Tgt Ion: 82 Resp: 1824
 Ion Ratio Lower Upper
 82 100
 128 38.5 34.0 51.0
 54 69.2 55.0 82.4





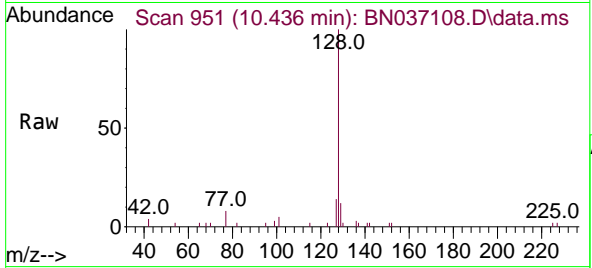
#9
 Naphthalene
 Concen: 0.339 ng
 RT: 10.436 min Scan# 911
 Delta R.T. -0.011 min
 Lab File: BN037108.D
 Acq: 28 May 2025 14:17

Instrument :

BNA_N

Client Sample Id :

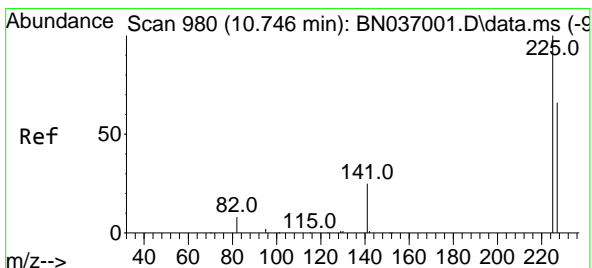
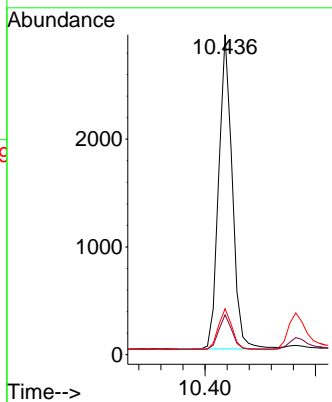
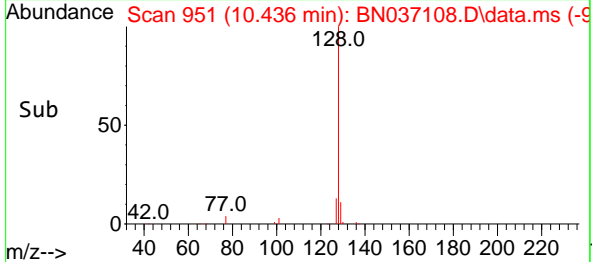
PB168155BS



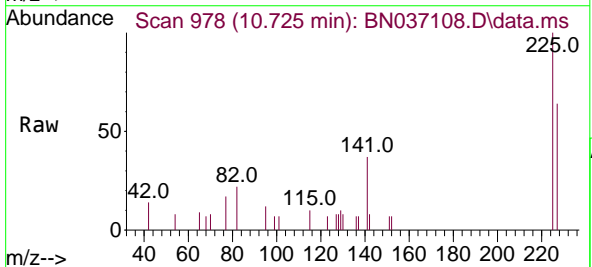
Tgt Ion:128 Resp: 493
 Ion Ratio Lower Upper
 128 100
 129 12.5 9.7 14.5
 127 14.4 12.4 18.6

Manual Integrations
 APPROVED

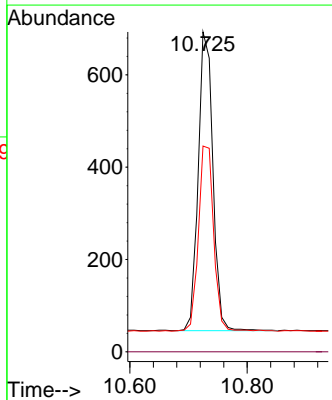
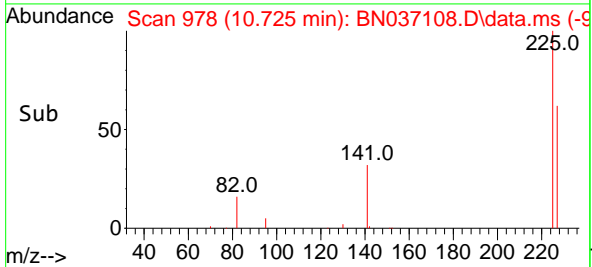
Reviewed By :Rahul Chavli 05/29/2025
 Supervised By :Jagrut Upadhyay 05/29/2025

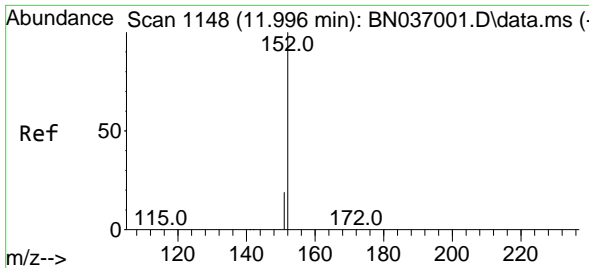


#10
 Hexachlorobutadiene
 Concen: 0.369 ng
 RT: 10.725 min Scan# 978
 Delta R.T. -0.021 min
 Lab File: BN037108.D
 Acq: 28 May 2025 14:17



Tgt Ion:225 Resp: 1127
 Ion Ratio Lower Upper
 225 100
 223 0.0 0.0 0.0
 227 64.4 50.9 76.3





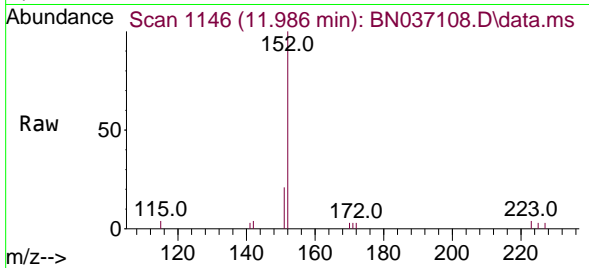
#11
 2-Methylnaphthalene-d10
 Concen: 0.382 ng m
 RT: 11.986 min Scan# 1146
 Delta R.T. -0.010 min
 Lab File: BN037108.D
 Acq: 28 May 2025 14:17

Instrument :

BNA_N

ClientSampleId :

PB168155BS



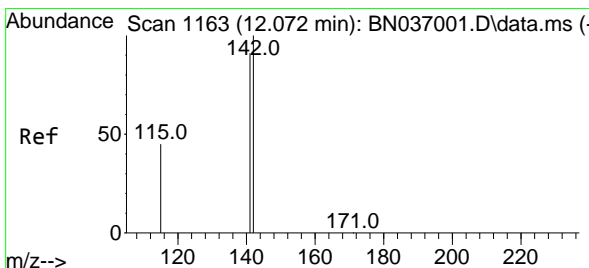
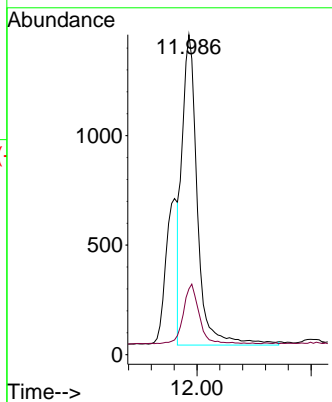
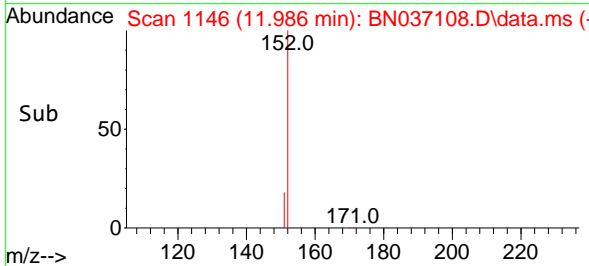
Tgt Ion:152 Resp: 265
 Ion Ratio Lower Upper
 152 100
 151 19.7 17.5 26.3

Manual Integrations

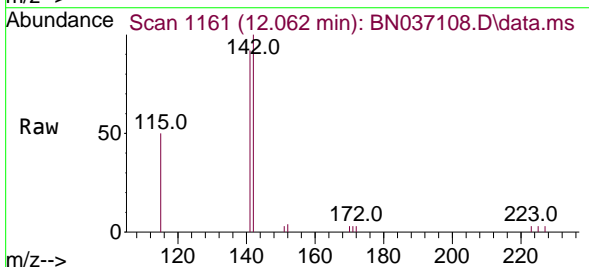
APPROVED

Reviewed By :Rahul Chavli 05/29/2025

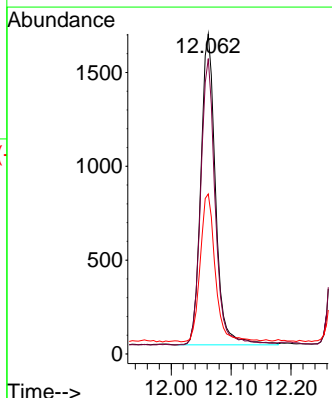
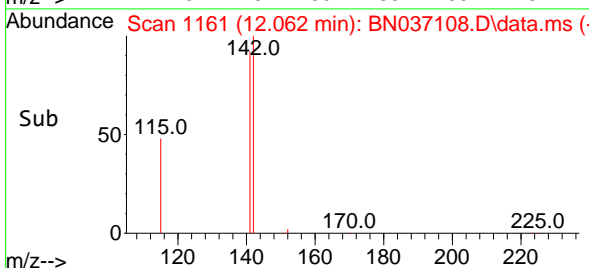
Supervised By :Jagrut Upadhyay 05/29/2025

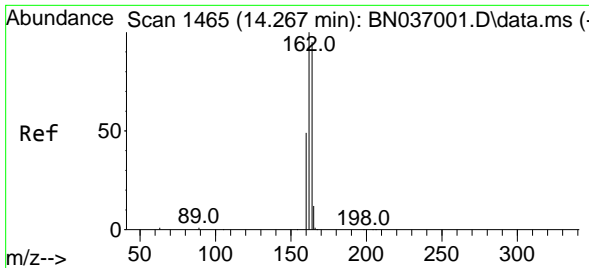


#12
 2-Methylnaphthalene
 Concen: 0.301 ng
 RT: 12.062 min Scan# 1161
 Delta R.T. -0.010 min
 Lab File: BN037108.D
 Acq: 28 May 2025 14:17



Tgt Ion:142 Resp: 2819
 Ion Ratio Lower Upper
 142 100
 141 92.3 73.3 109.9
 115 50.0 38.4 57.6





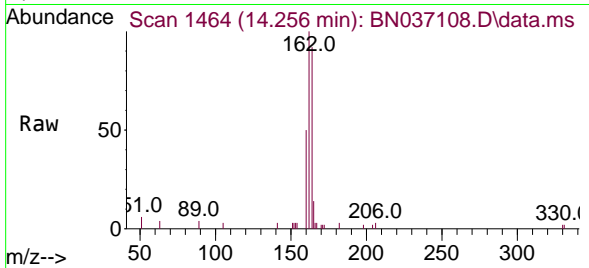
#13
 Acenaphthene-d10
 Concen: 0.400 ng
 RT: 14.256 min Scan# 14
 Delta R.T. -0.011 min
 Lab File: BN037108.D
 Acq: 28 May 2025 14:17

Instrument :

BNA_N

Client Sample Id :

PB168155BS



Tgt Ion:164 Resp: 2429

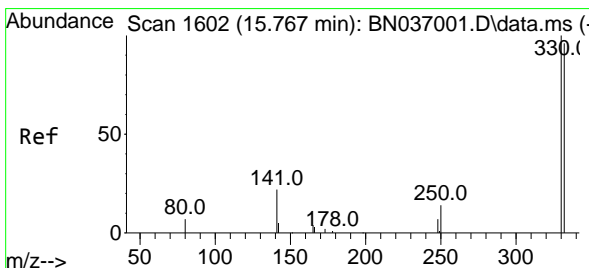
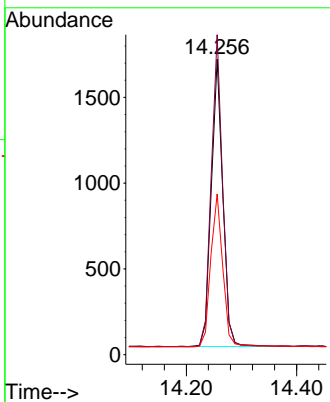
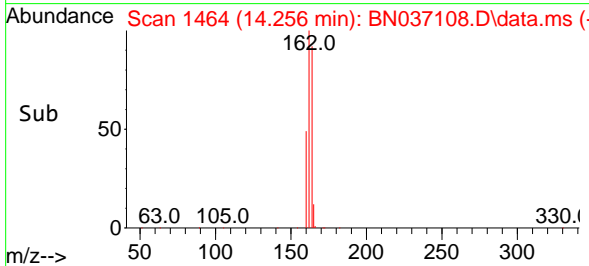
| Ion | Ratio | Lower | Upper |
|-----|-------|-------|-------|
| 164 | 100 | | |
| 162 | 108.3 | 84.2 | 126.4 |
| 160 | 54.4 | 42.6 | 63.8 |

Manual Integrations

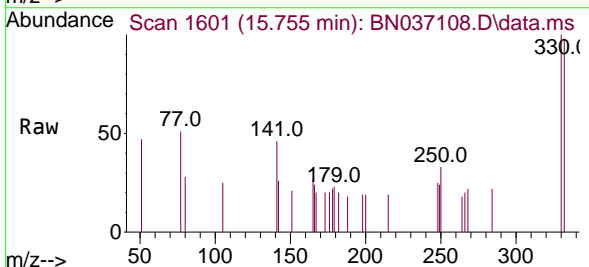
APPROVED

Reviewed By :Rahul Chavli 05/29/2025

Supervised By :Jagrut Upadhyay 05/29/2025

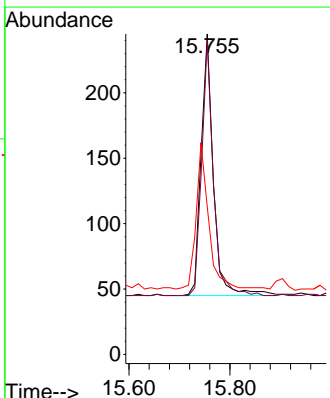
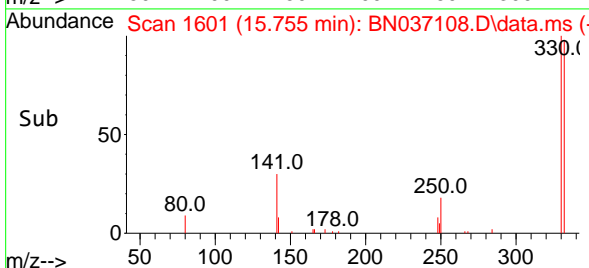


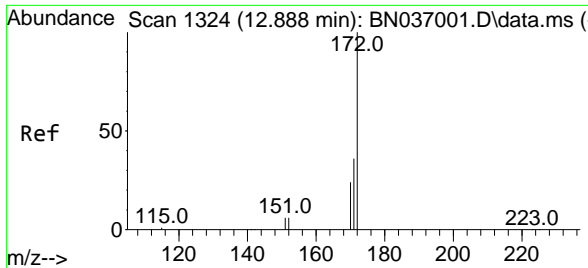
#14
 2,4,6-Tribromophenol
 Concen: 0.316 ng
 RT: 15.755 min Scan# 1601
 Delta R.T. -0.012 min
 Lab File: BN037108.D
 Acq: 28 May 2025 14:17



Tgt Ion:330 Resp: 337

| Ion | Ratio | Lower | Upper |
|-----|-------|-------|-------|
| 330 | 100 | | |
| 332 | 93.2 | 73.8 | 110.8 |
| 141 | 56.7 | 43.9 | 65.9 |





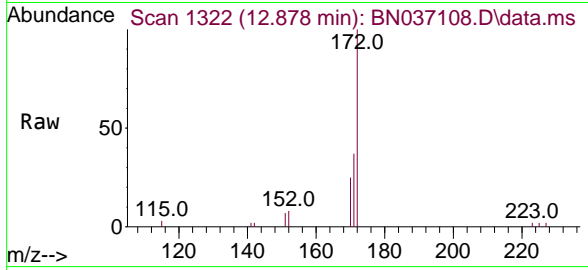
#15
 2-Fluorobiphenyl
 Concen: 0.348 ng
 RT: 12.878 min Scan# 11
 Delta R.T. -0.010 min
 Lab File: BN037108.D
 Acq: 28 May 2025 14:17

Instrument :

BNA_N

ClientSampleId :

PB168155BS



Tgt Ion:172 Resp: 3874

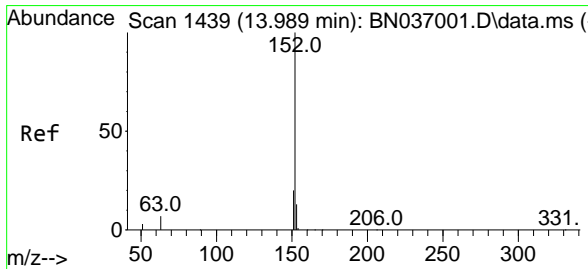
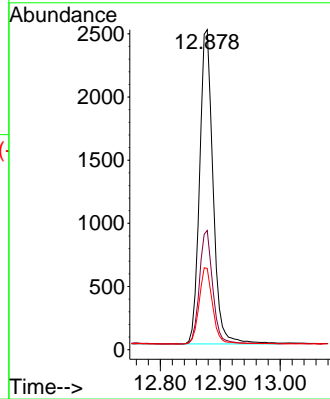
| Ion | Ratio | Lower | Upper |
|-----|-------|-------|-------|
| 172 | 100 | | |
| 171 | 37.3 | 29.2 | 43.8 |
| 170 | 25.4 | 20.5 | 30.7 |

Manual Integrations

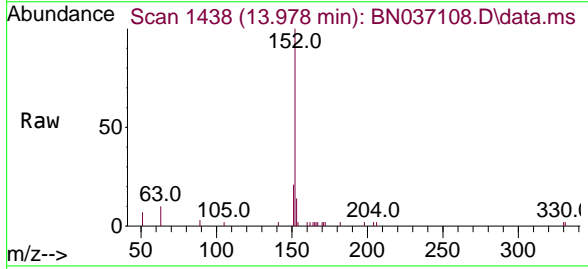
APPROVED

Reviewed By :Rahul Chavli 05/29/2025

Supervised By :Jagrut Upadhyay 05/29/2025

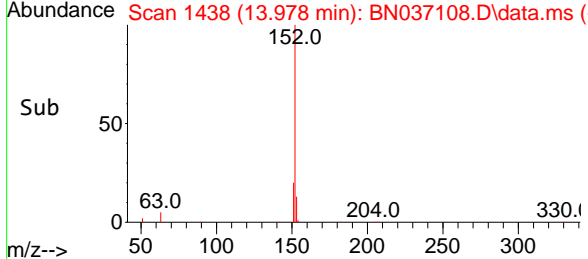
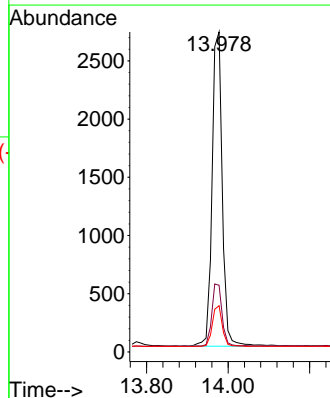


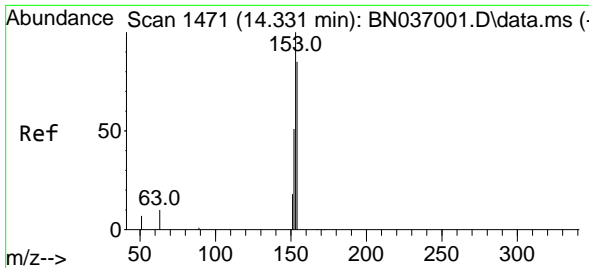
#16
 Acenaphthylene
 Concen: 0.396 ng
 RT: 13.978 min Scan# 1438
 Delta R.T. -0.011 min
 Lab File: BN037108.D
 Acq: 28 May 2025 14:17



Tgt Ion:152 Resp: 4684

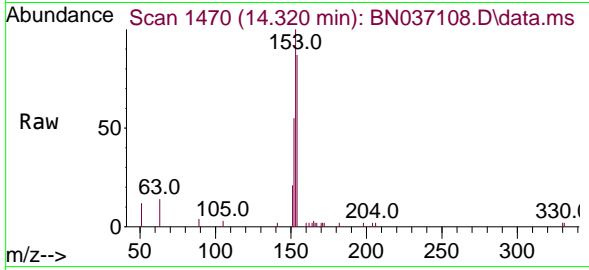
| Ion | Ratio | Lower | Upper |
|-----|-------|-------|-------|
| 152 | 100 | | |
| 151 | 20.0 | 16.1 | 24.1 |
| 153 | 12.7 | 10.5 | 15.7 |





#17
 Acenaphthene
 Concen: 0.356 ng
 RT: 14.320 min Scan# 1470
 Delta R.T. -0.011 min
 Lab File: BN037108.D
 Acq: 28 May 2025 14:17

Instrument : BNA_N
 Client Sample Id : PB168155BS

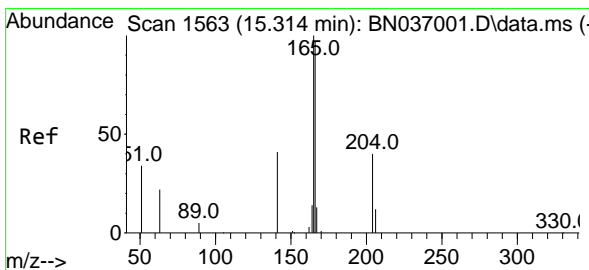
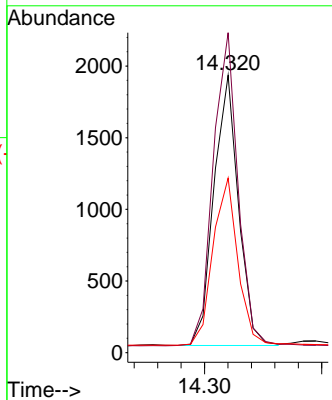
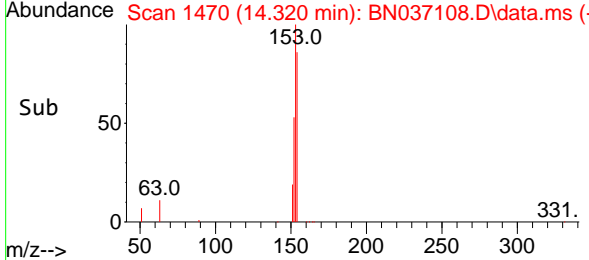


Tgt Ion: 154 Resp: 2750

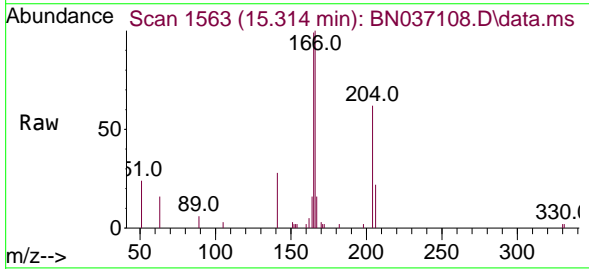
| Ion | Ratio | Lower | Upper |
|-----|-------|-------|-------|
| 154 | 100 | | |
| 153 | 117.0 | 94.2 | 141.4 |
| 152 | 63.0 | 49.4 | 74.0 |

Manual Integrations
 APPROVED

Reviewed By :Rahul Chavli 05/29/2025
 Supervised By :Jagrut Upadhyay 05/29/2025

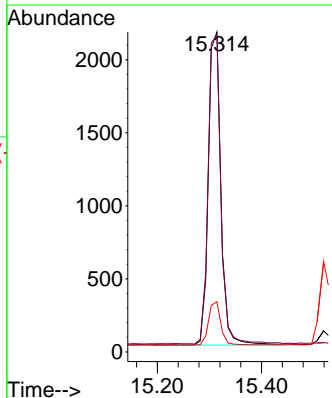
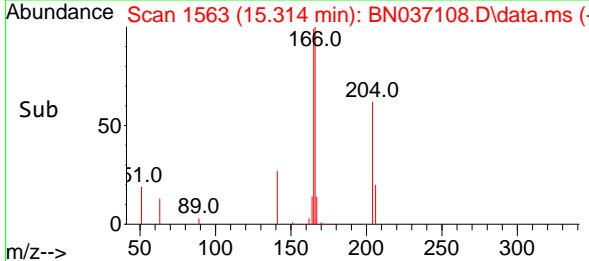


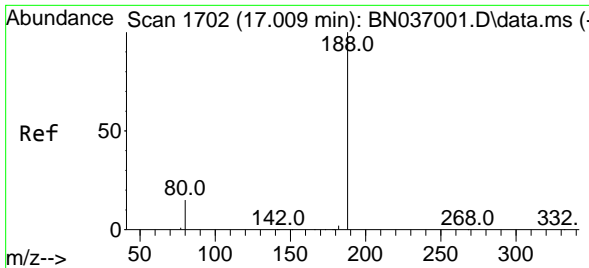
#18
 Fluorene
 Concen: 0.351 ng
 RT: 15.314 min Scan# 1563
 Delta R.T. 0.000 min
 Lab File: BN037108.D
 Acq: 28 May 2025 14:17



Tgt Ion: 166 Resp: 3561

| Ion | Ratio | Lower | Upper |
|-----|-------|-------|-------|
| 166 | 100 | | |
| 165 | 99.7 | 80.6 | 120.8 |
| 167 | 14.0 | 10.6 | 16.0 |





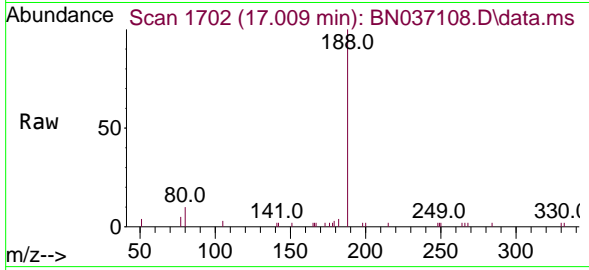
#19
 Phenanthrene-d10
 Concen: 0.400 ng
 RT: 17.009 min Scan# 11
 Delta R.T. 0.000 min
 Lab File: BN037108.D
 Acq: 28 May 2025 14:17

Instrument :

BNA_N

ClientSampleId :

PB168155BS



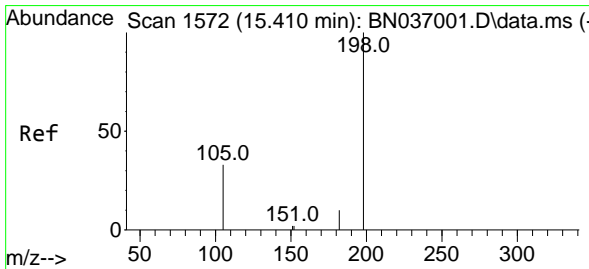
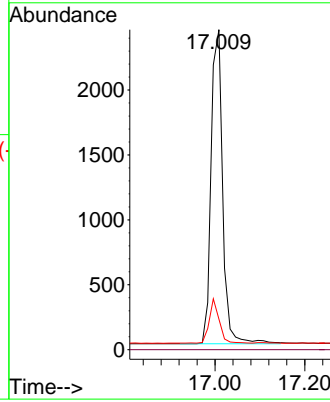
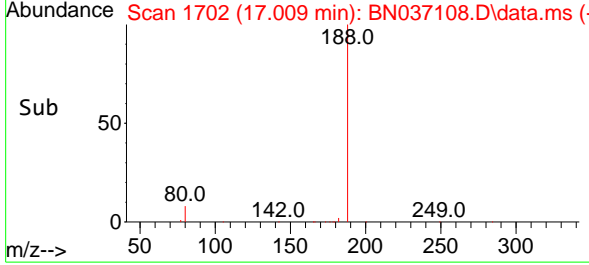
Tgt Ion:188 Resp: 4320
 Ion Ratio Lower Upper
 188 100
 94 0.0 0.0 0.0
 80 9.6 13.4 20.0

Manual Integrations

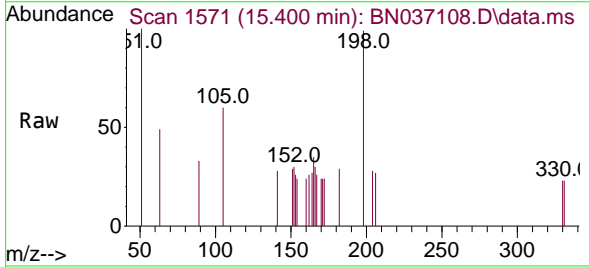
APPROVED

Reviewed By :Rahul Chavli 05/29/2025

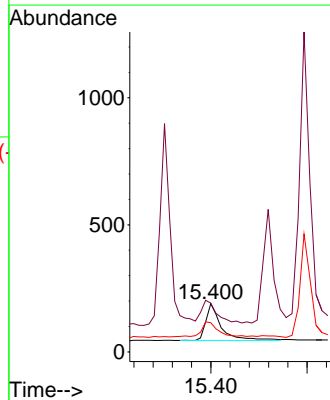
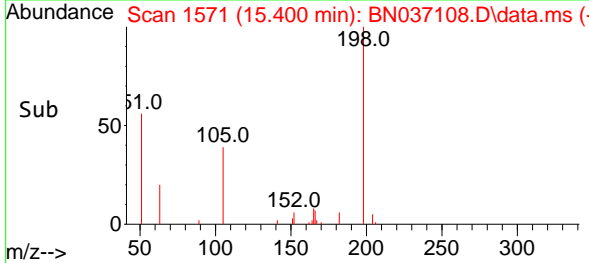
Supervised By :Jagrut Upadhyay 05/29/2025

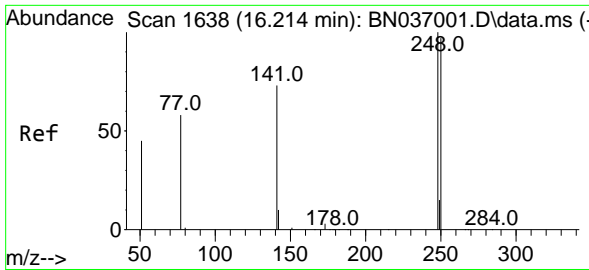


#20
 4,6-Dinitro-2-methylphenol
 Concen: 0.393 ng
 RT: 15.400 min Scan# 1571
 Delta R.T. -0.010 min
 Lab File: BN037108.D
 Acq: 28 May 2025 14:17



Tgt Ion:198 Resp: 328
 Ion Ratio Lower Upper
 198 100
 51 101.1 87.8 131.6
 105 60.5 44.2 66.4





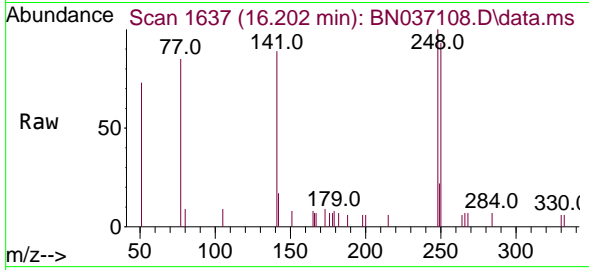
#21
 4-Bromophenyl-phenylether
 Concen: 0.386 ng
 RT: 16.202 min Scan# 1637
 Delta R.T. -0.012 min
 Lab File: BN037108.D
 Acq: 28 May 2025 14:17

Instrument :

BNA_N

ClientSampleId :

PB168155BS



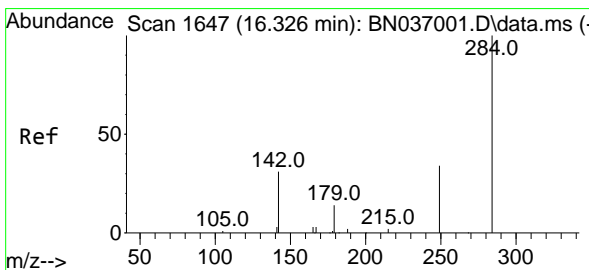
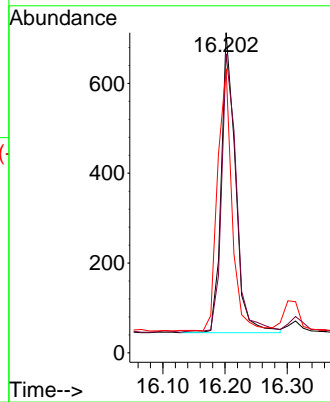
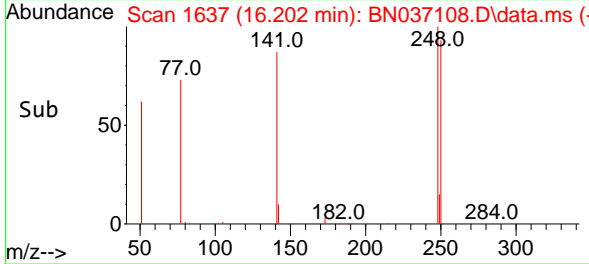
Tgt Ion:248 Resp: 1050
 Ion Ratio Lower Upper
 248 100
 250 93.4 78.1 117.1
 141 88.8 59.7 89.5

Manual Integrations

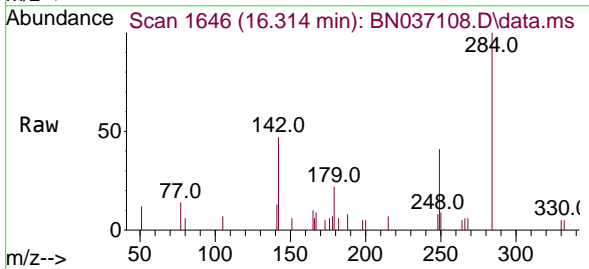
APPROVED

Reviewed By :Rahul Chavli 05/29/2025

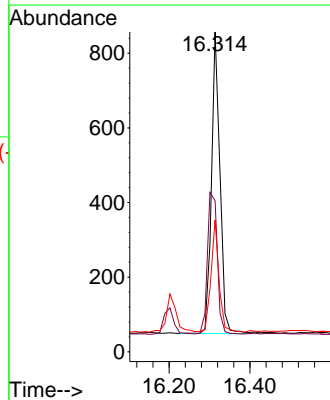
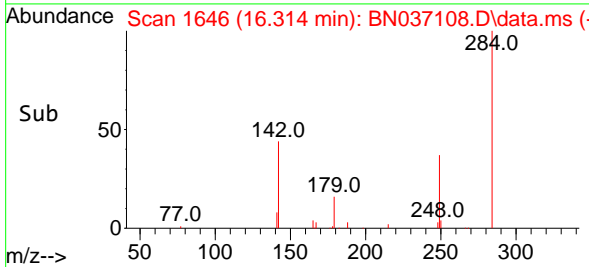
Supervised By :Jagrut Upadhyay 05/29/2025

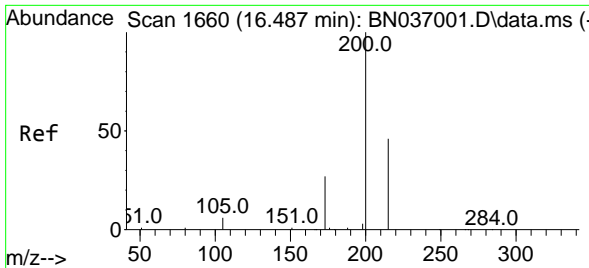


#22
 Hexachlorobenzene
 Concen: 0.405 ng
 RT: 16.314 min Scan# 1646
 Delta R.T. -0.012 min
 Lab File: BN037108.D
 Acq: 28 May 2025 14:17



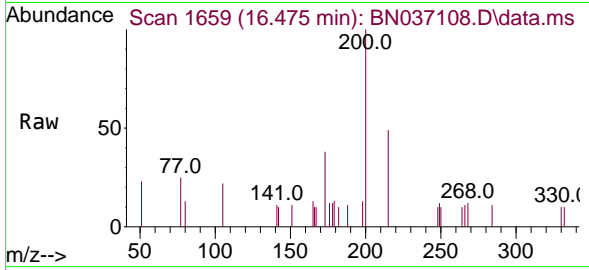
Tgt Ion:284 Resp: 1185
 Ion Ratio Lower Upper
 284 100
 142 54.0 41.2 61.8
 249 34.6 28.7 43.1





#23
 Atrazine
 Concen: 0.358 ng
 RT: 16.475 min Scan# 1659
 Delta R.T. -0.012 min
 Lab File: BN037108.D
 Acq: 28 May 2025 14:17

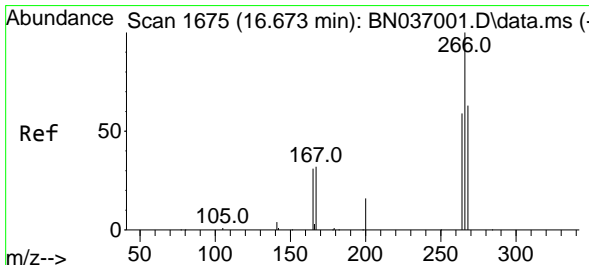
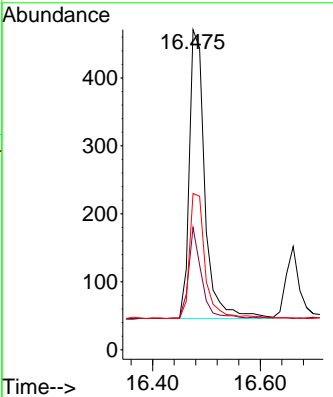
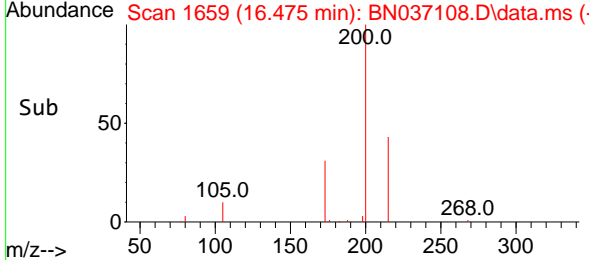
Instrument : BNA_N
 Client Sample Id : PB168155BS



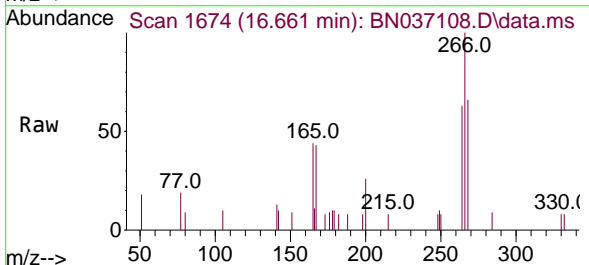
Tgt Ion: 200 Resp: 85

| Ion | Ratio | Lower | Upper |
|-----|-------|-------|-------|
| 200 | 100 | | |
| 173 | 38.2 | 25.2 | 37.8 |
| 215 | 48.8 | 39.3 | 58.9 |

Manual Integrations
APPROVED
 Reviewed By :Rahul Chavli 05/29/2025
 Supervised By :Jagrut Upadhyay 05/29/2025

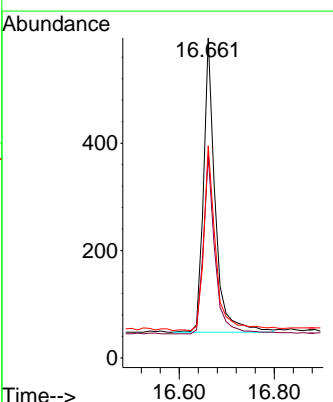
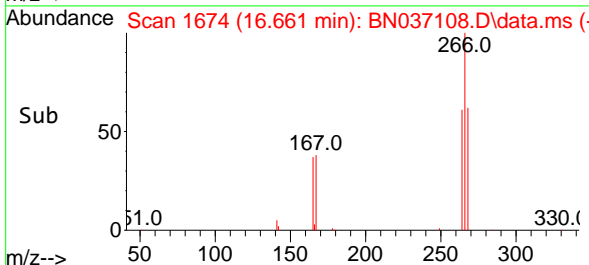


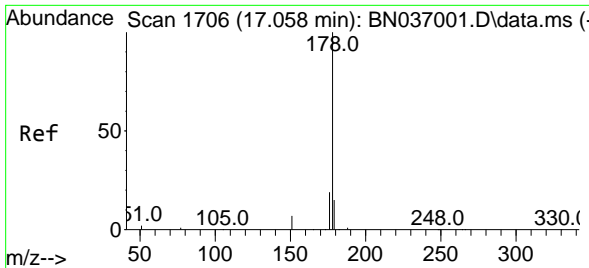
#24
 Pentachlorophenol
 Concen: 0.582 ng
 RT: 16.661 min Scan# 1674
 Delta R.T. -0.012 min
 Lab File: BN037108.D
 Acq: 28 May 2025 14:17



Tgt Ion: 266 Resp: 938

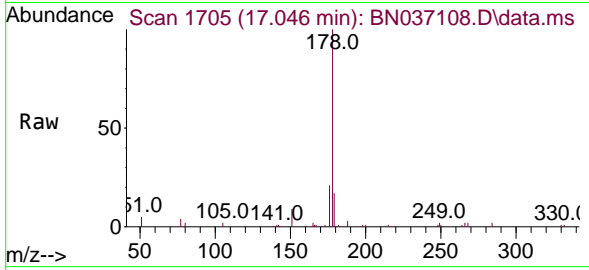
| Ion | Ratio | Lower | Upper |
|-----|-------|-------|-------|
| 266 | 100 | | |
| 264 | 60.4 | 47.9 | 71.9 |
| 268 | 63.0 | 50.0 | 75.0 |





#25
 Phenanthrene
 Concen: 0.357 ng
 RT: 17.046 min Scan# 1712
 Delta R.T. -0.012 min
 Lab File: BN037108.D
 Acq: 28 May 2025 14:17

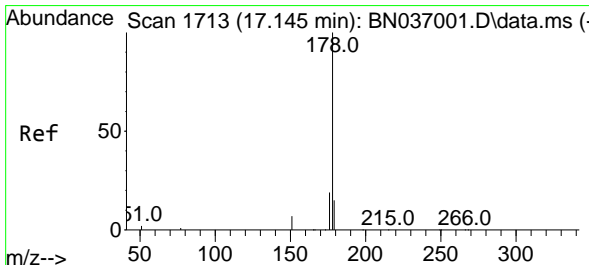
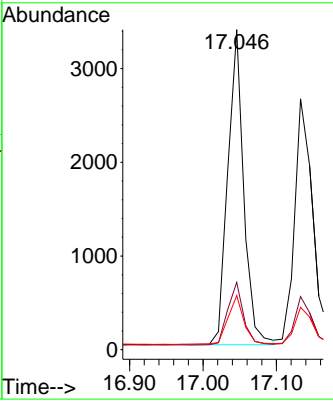
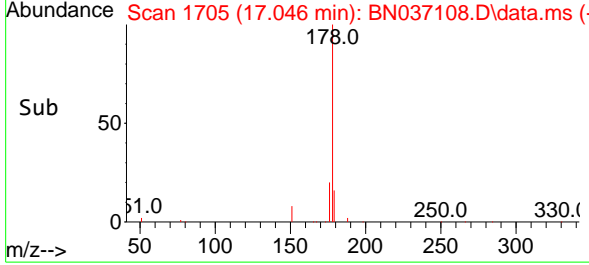
Instrument : BNA_N
 Client Sample Id : PB168155BS



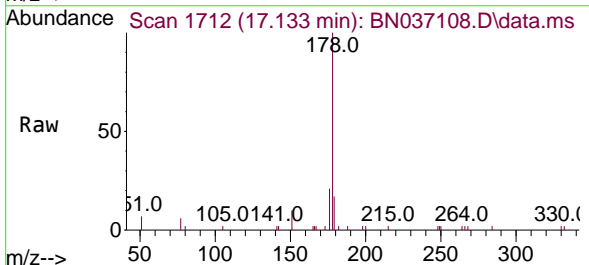
Tgt Ion: 178 Resp: 5049

| Ion | Ratio | Lower | Upper |
|-----|-------|-------|-------|
| 178 | 100 | | |
| 176 | 19.5 | 15.7 | 23.5 |
| 179 | 15.7 | 12.2 | 18.2 |

Manual Integrations
APPROVED
 Reviewed By :Rahul Chavli 05/29/2025
 Supervised By :Jagrut Upadhyay 05/29/2025

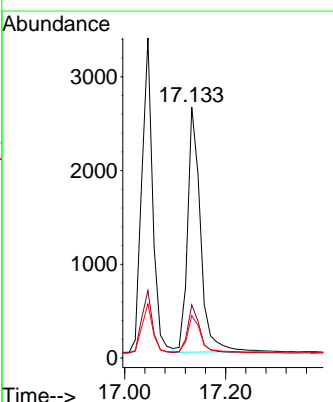
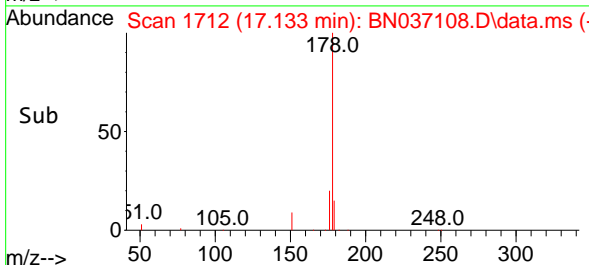


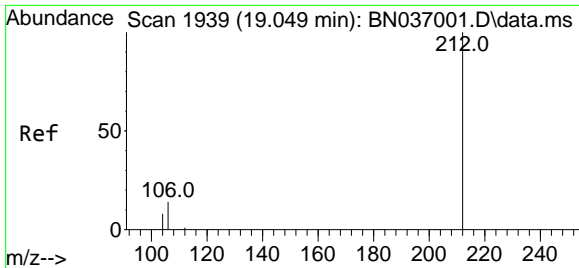
#26
 Anthracene
 Concen: 0.362 ng
 RT: 17.133 min Scan# 1712
 Delta R.T. -0.012 min
 Lab File: BN037108.D
 Acq: 28 May 2025 14:17



Tgt Ion: 178 Resp: 4654

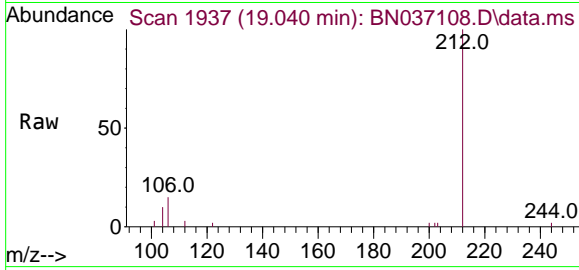
| Ion | Ratio | Lower | Upper |
|-----|-------|-------|-------|
| 178 | 100 | | |
| 176 | 18.8 | 15.0 | 22.6 |
| 179 | 15.3 | 12.3 | 18.5 |





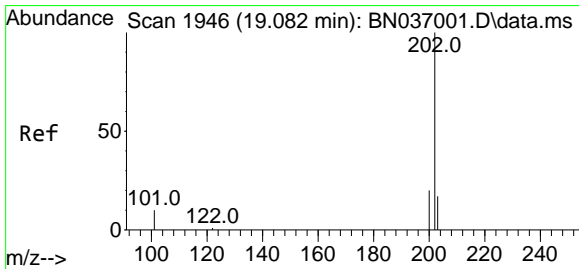
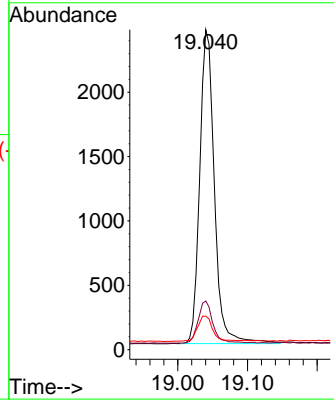
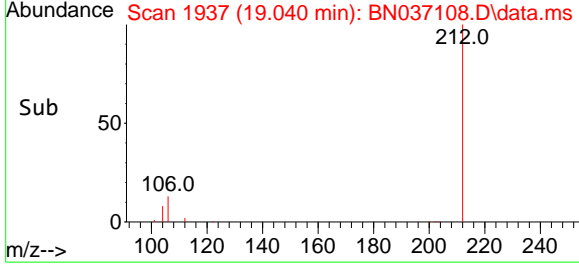
#27
 Fluoranthene-d10
 Concen: 0.301 ng
 RT: 19.040 min Scan# 1937
 Delta R.T. -0.009 min
 Lab File: BN037108.D
 Acq: 28 May 2025 14:17

Instrument : BNA_N
 Client Sample Id : PB168155BS

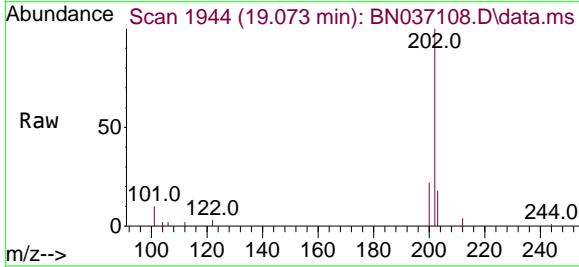


Tgt Ion: 212 Resp: 3574
 Ion Ratio Lower Upper
 212 100
 106 13.5 11.3 16.9
 104 8.6 6.7 10.1

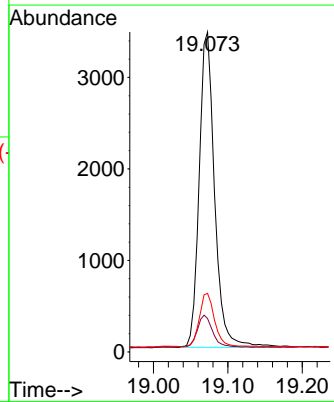
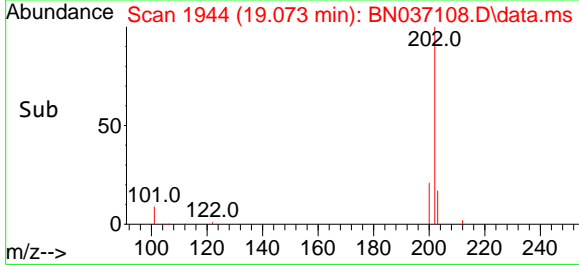
Manual Integrations
APPROVED
 Reviewed By :Rahul Chavli 05/29/2025
 Supervised By :Jagrut Upadhyay 05/29/2025

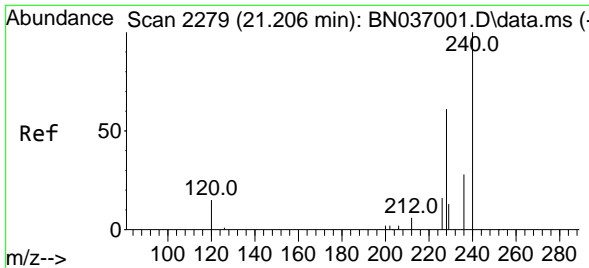


#28
 Fluoranthene
 Concen: 0.294 ng
 RT: 19.073 min Scan# 1944
 Delta R.T. -0.009 min
 Lab File: BN037108.D
 Acq: 28 May 2025 14:17



Tgt Ion: 202 Resp: 4961
 Ion Ratio Lower Upper
 202 100
 101 10.2 8.9 13.3
 203 16.8 13.8 20.8





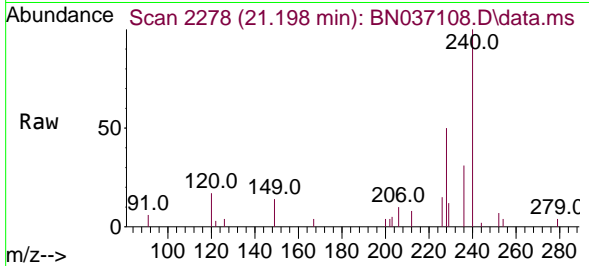
#29
 Chrysene-d12
 Concen: 0.400 ng
 RT: 21.198 min Scan# 21
 Delta R.T. -0.009 min
 Lab File: BN037108.D
 Acq: 28 May 2025 14:17

Instrument :

BNA_N

ClientSampleId :

PB168155BS



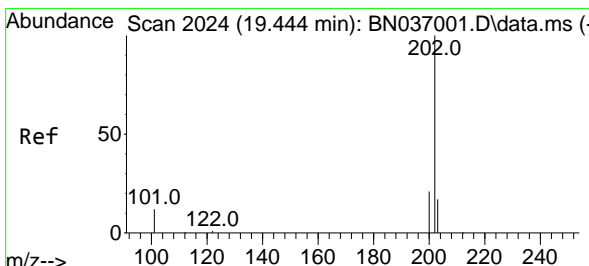
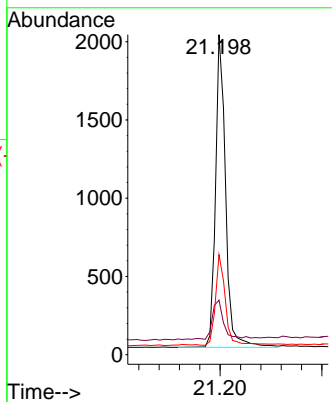
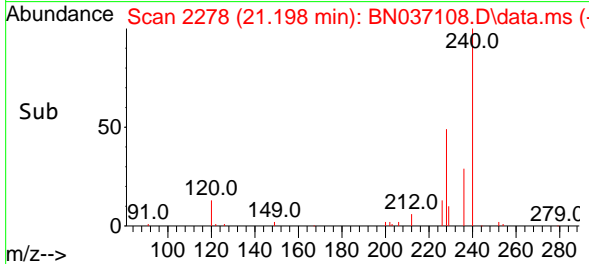
Tgt Ion:240 Resp: 2740
 Ion Ratio Lower Upper
 240 100
 120 17.1 15.1 22.7
 236 31.2 24.0 36.0

Manual Integrations

APPROVED

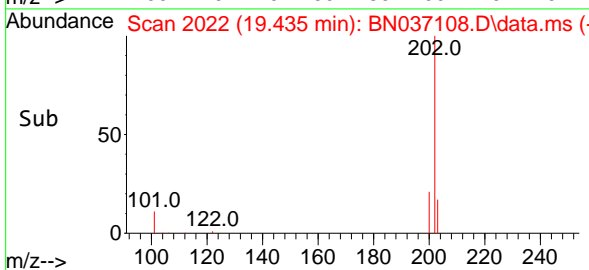
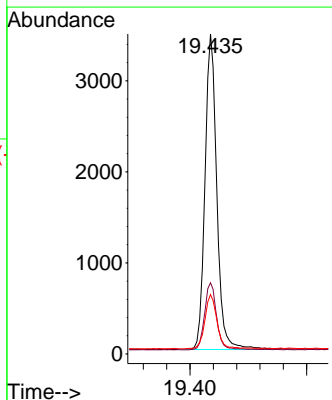
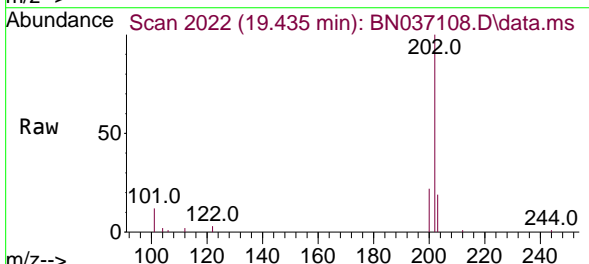
Reviewed By :Rahul Chavli 05/29/2025

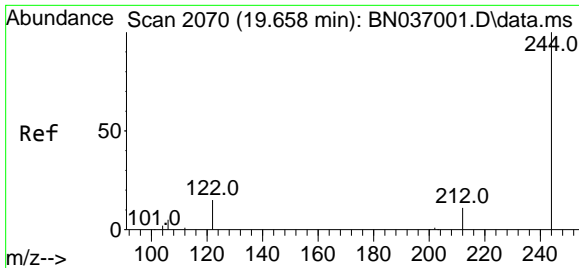
Supervised By :Jagrut Upadhyay 05/29/2025



#30
 Pyrene
 Concen: 0.418 ng
 RT: 19.435 min Scan# 2022
 Delta R.T. -0.009 min
 Lab File: BN037108.D
 Acq: 28 May 2025 14:17

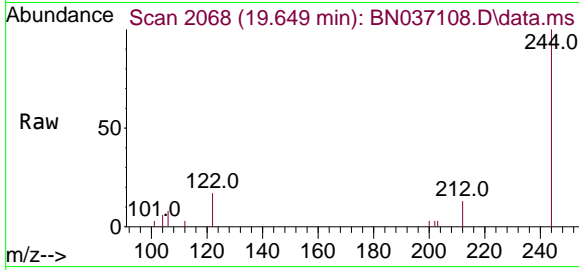
Tgt Ion:202 Resp: 4905
 Ion Ratio Lower Upper
 202 100
 200 21.4 17.1 25.7
 203 17.9 14.2 21.4





#31
 Terphenyl-d14
 Concen: 0.420 ng
 RT: 19.649 min Scan# 2068
 Delta R.T. -0.009 min
 Lab File: BN037108.D
 Acq: 28 May 2025 14:17

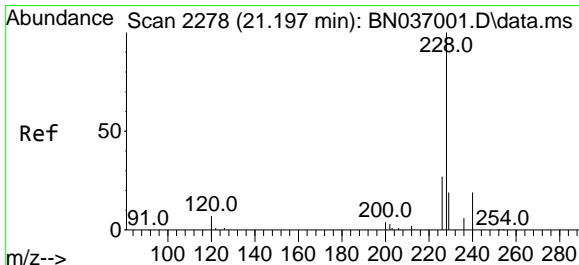
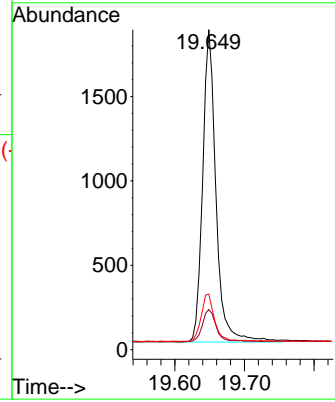
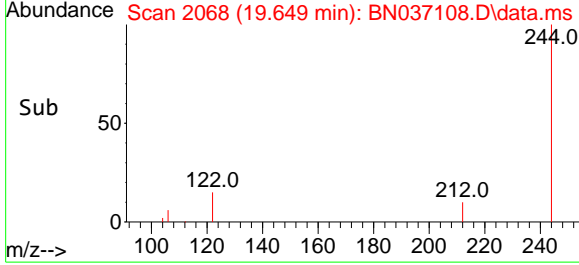
Instrument : BNA_N
 Client Sample Id : PB168155BS



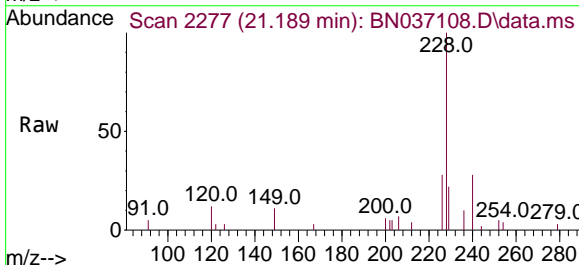
Tgt Ion: 244 Resp: 246

| Ion | Ratio | Lower | Upper |
|-----|-------|-------|-------|
| 244 | 100 | | |
| 212 | 12.6 | 9.7 | 14.5 |
| 122 | 17.4 | 13.4 | 20.0 |

Manual Integrations
APPROVED
 Reviewed By :Rahul Chavli 05/29/2025
 Supervised By :Jagrut Upadhyay 05/29/2025

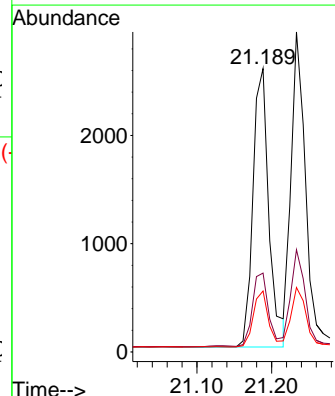
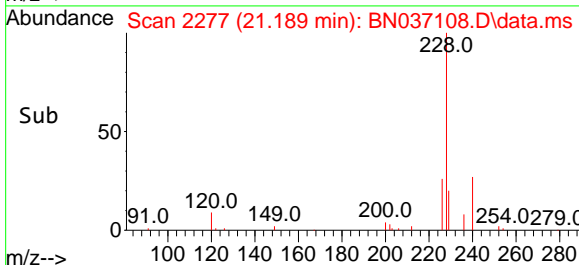


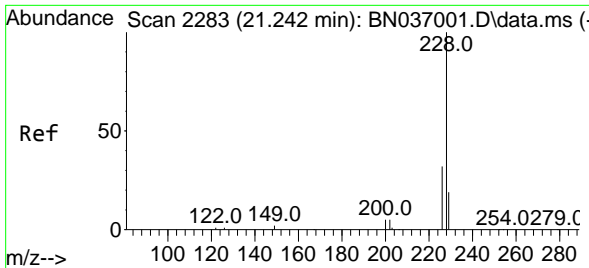
#32
 Benzo(a)anthracene
 Concen: 0.370 ng
 RT: 21.189 min Scan# 2277
 Delta R.T. -0.009 min
 Lab File: BN037108.D
 Acq: 28 May 2025 14:17



Tgt Ion: 228 Resp: 3830

| Ion | Ratio | Lower | Upper |
|-----|-------|-------|-------|
| 228 | 100 | | |
| 226 | 27.8 | 22.2 | 33.4 |
| 229 | 21.5 | 16.0 | 24.0 |





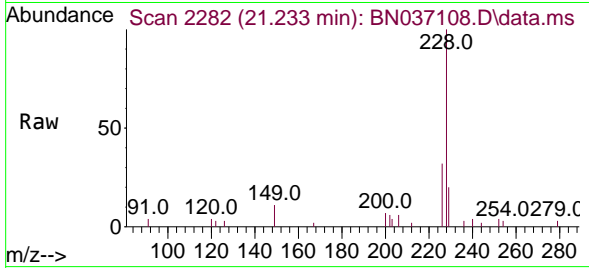
#33
 Chrysene
 Concen: 0.366 ng
 RT: 21.233 min Scan# 21270
 Delta R.T. -0.009 min
 Lab File: BN037108.D
 Acq: 28 May 2025 14:17

Instrument :

BNA_N

Client Sample Id :

PB168155BS

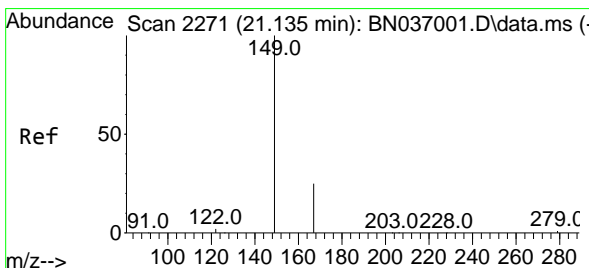
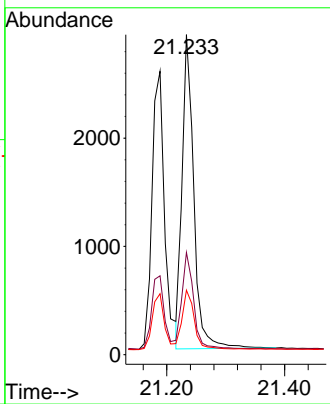
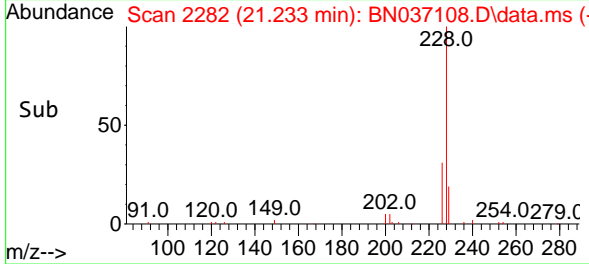


Tgt Ion: 228 Resp: 400
 Ion Ratio Lower Upper
 228 100
 226 32.0 26.3 39.5
 229 20.1 16.2 24.2

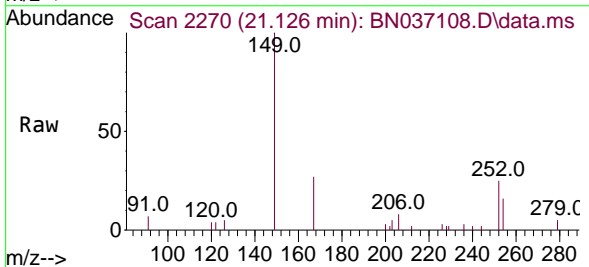
Manual Integrations

APPROVED

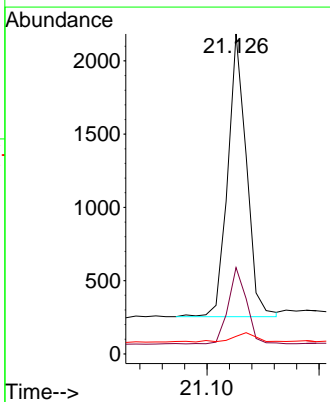
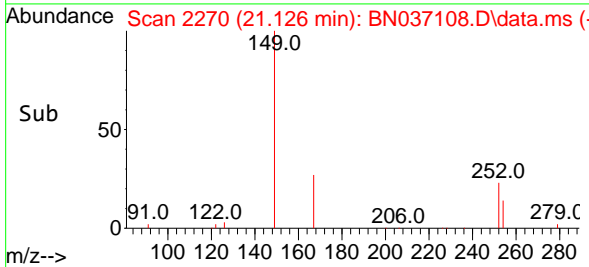
Reviewed By :Rahul Chavli 05/29/2025
 Supervised By :Jagrut Upadhyay 05/29/2025

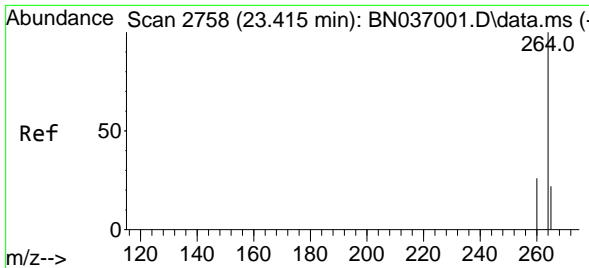


#34
 Bis(2-ethylhexyl)phthalate
 Concen: 0.352 ng
 RT: 21.126 min Scan# 2270
 Delta R.T. -0.009 min
 Lab File: BN037108.D
 Acq: 28 May 2025 14:17



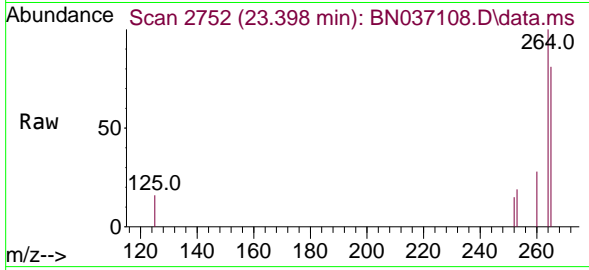
Tgt Ion: 149 Resp: 2238
 Ion Ratio Lower Upper
 149 100
 167 26.5 20.6 30.8
 279 3.3 2.6 3.8





#35
 Perylene-d12
 Concen: 0.400 ng
 RT: 23.398 min Scan# 21
 Delta R.T. -0.017 min
 Lab File: BN037108.D
 Acq: 28 May 2025 14:17

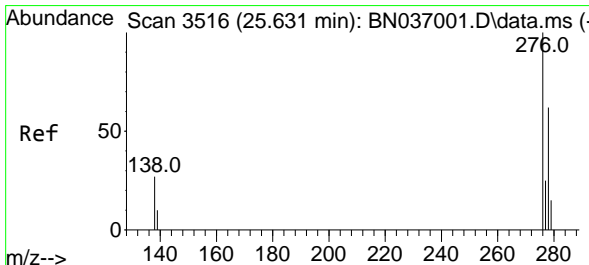
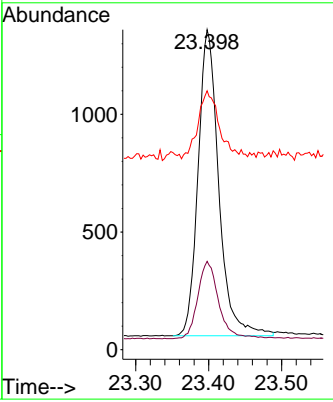
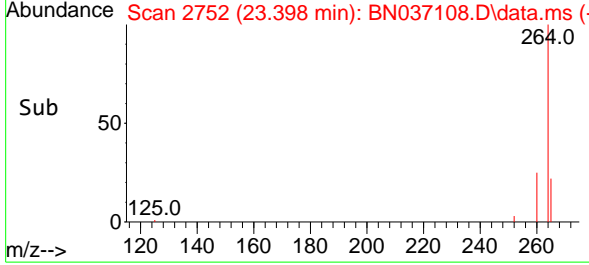
Instrument : BNA_N
 Client Sample Id : PB168155BS



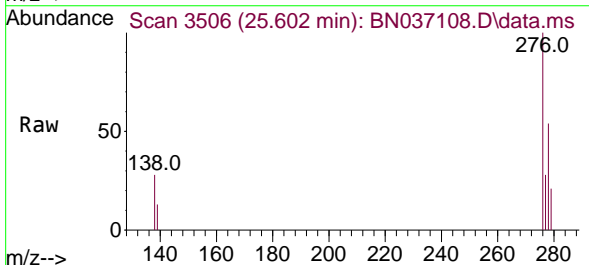
Tgt Ion: 264 Resp: 256

| Ion | Ratio | Lower | Upper |
|-----|-------|-------|-------|
| 264 | 100 | | |
| 260 | 27.6 | 21.9 | 32.9 |
| 265 | 80.9 | 51.6 | 77.4 |

Manual Integrations
APPROVED
 Reviewed By :Rahul Chavli 05/29/2025
 Supervised By :Jagrut Upadhyay 05/29/2025

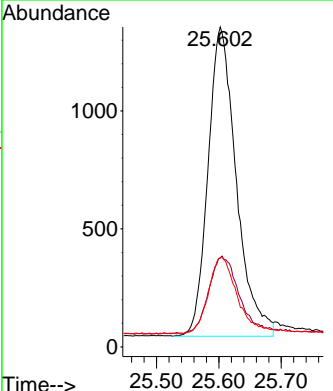
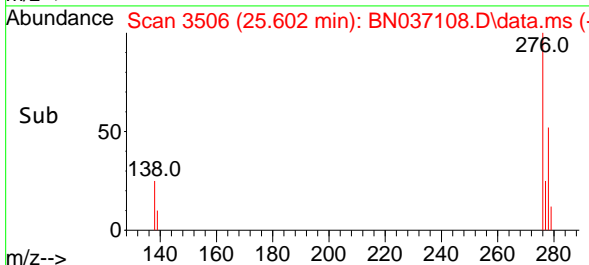


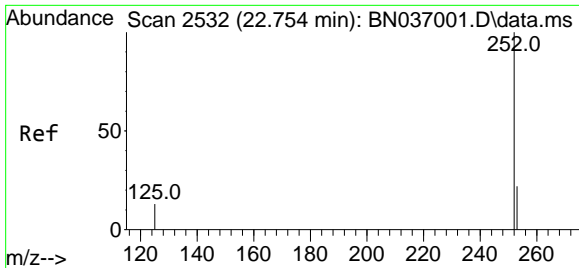
#36
 Indeno(1,2,3-cd)pyrene
 Concen: 0.395 ng
 RT: 25.602 min Scan# 3506
 Delta R.T. -0.029 min
 Lab File: BN037108.D
 Acq: 28 May 2025 14:17



Tgt Ion: 276 Resp: 4131

| Ion | Ratio | Lower | Upper |
|-----|-------|-------|-------|
| 276 | 100 | | |
| 138 | 27.1 | 22.7 | 34.1 |
| 277 | 25.8 | 20.0 | 30.0 |





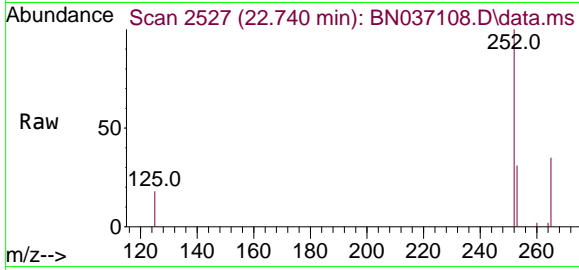
#37
 Benzo(b)fluoranthene
 Concen: 0.344 ng
 RT: 22.740 min Scan# 21
 Delta R.T. -0.015 min
 Lab File: BN037108.D
 Acq: 28 May 2025 14:17

Instrument :

BNA_N

Client SampleID :

PB168155BS



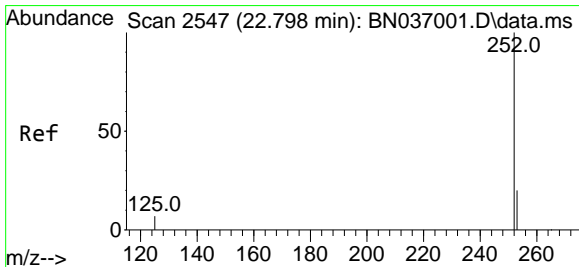
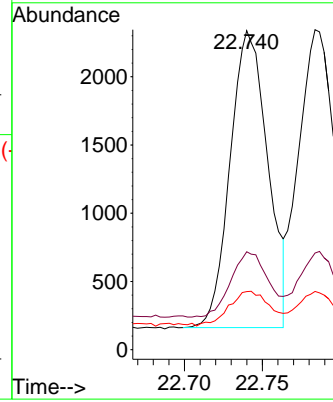
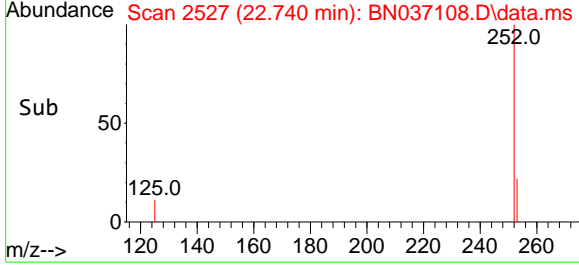
Tgt Ion:252 Resp: 3658
 Ion Ratio Lower Upper
 252 100
 253 30.7 21.8 32.6
 125 18.2 14.6 21.8

Manual Integrations

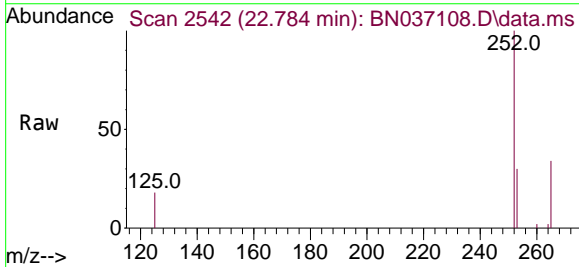
APPROVED

Reviewed By :Rahul Chavli 05/29/2025

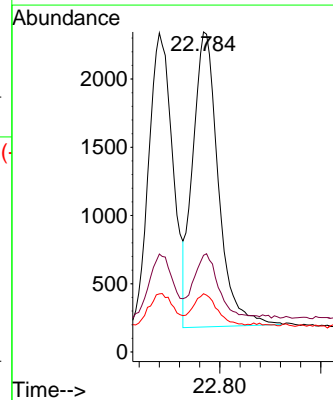
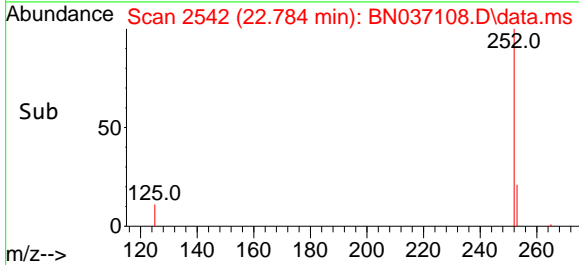
Supervised By :Jagrut Upadhyay 05/29/2025

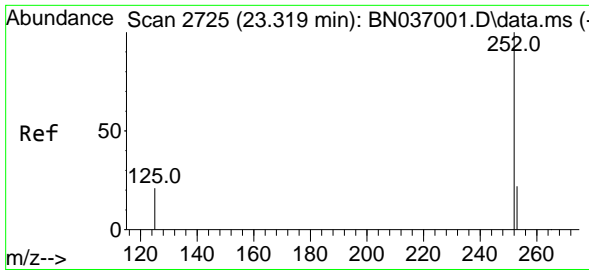


#38
 Benzo(k)fluoranthene
 Concen: 0.361 ng
 RT: 22.784 min Scan# 2542
 Delta R.T. -0.015 min
 Lab File: BN037108.D
 Acq: 28 May 2025 14:17



Tgt Ion:252 Resp: 3793
 Ion Ratio Lower Upper
 252 100
 253 30.2 21.4 32.2
 125 18.2 13.0 19.4





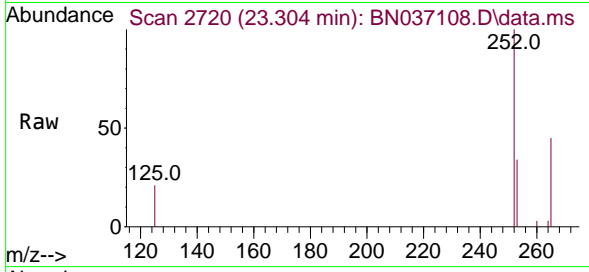
#39
 Benzo(a)pyrene
 Concen: 0.382 ng
 RT: 23.304 min Scan# 21
 Delta R.T. -0.015 min
 Lab File: BN037108.D
 Acq: 28 May 2025 14:17

Instrument :

BNA_N

ClientSampleId :

PB168155BS



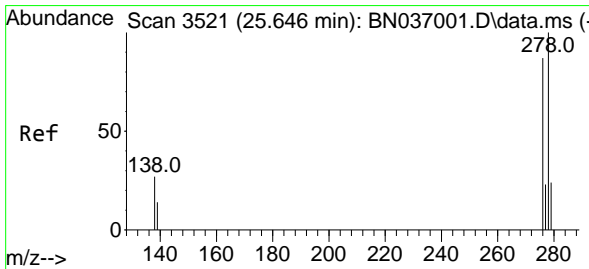
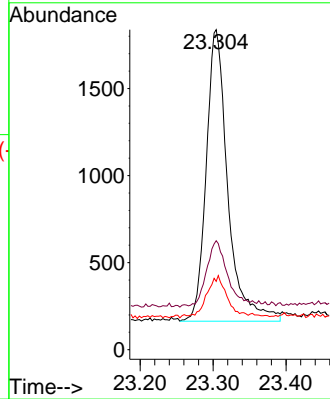
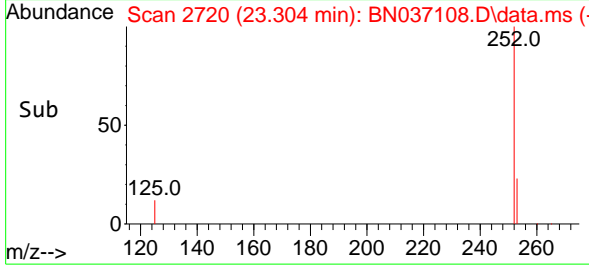
Tgt Ion:252 Resp: 344
 Ion Ratio Lower Upper
 252 100
 253 34.1 23.8 35.6
 125 21.4 21.8 32.6

Manual Integrations

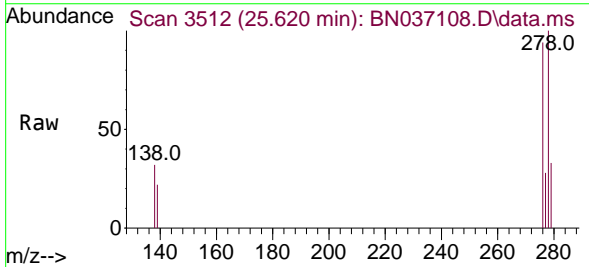
APPROVED

Reviewed By :Rahul Chavli 05/29/2025

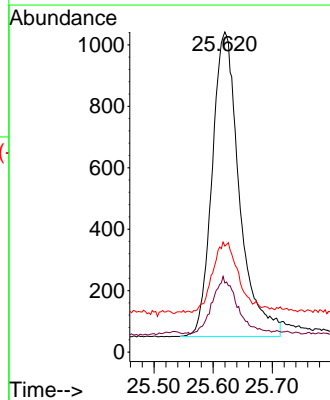
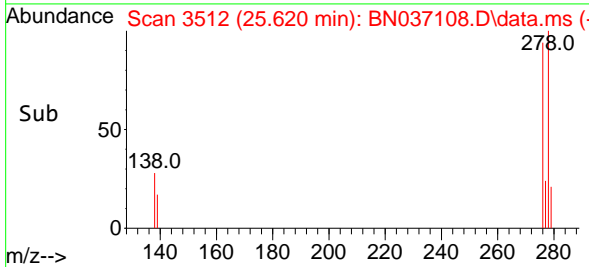
Supervised By :Jagrut Upadhyay 05/29/2025

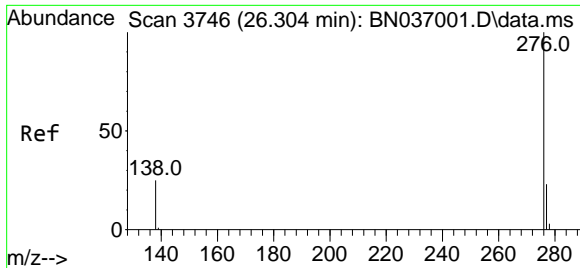


#40
 Dibenzo(a,h)anthracene
 Concen: 0.388 ng
 RT: 25.620 min Scan# 3512
 Delta R.T. -0.026 min
 Lab File: BN037108.D
 Acq: 28 May 2025 14:17



Tgt Ion:278 Resp: 3166
 Ion Ratio Lower Upper
 278 100
 139 21.6 17.4 26.0
 279 33.1 24.6 37.0





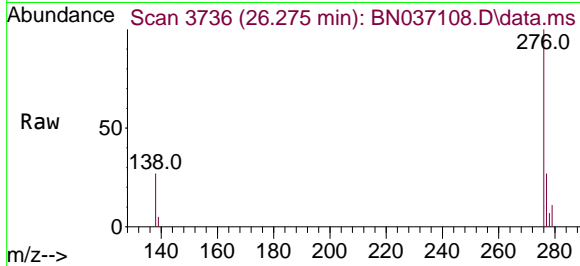
#41
 Benzo(g,h,i)perylene
 Concen: 0.418 ng
 RT: 26.275 min Scan# 31
 Delta R.T. -0.029 min
 Lab File: BN037108.D
 Acq: 28 May 2025 14:17

Instrument :

BNA_N

ClientSampleId :

PB168155BS



Tgt Ion: 276 Resp: 370

| Ion | Ratio | Lower | Upper |
|-----|-------|-------|-------|
| 276 | 100 | | |
| 277 | 27.3 | 20.2 | 30.4 |
| 138 | 27.2 | 22.0 | 33.0 |

Manual Integrations

APPROVED

Reviewed By :Rahul Chavli 05/29/2025

Supervised By :Jagrut Upadhyay 05/29/2025

