

Data Path : Z:\pestpcbsrv\HPCHEM1\FID_C\Data\FC060925AL\
 Data File : FC069134.D
 Signal(s) : FID1A.ch
 Acq On : 09 Jun 2025 16:17
 Operator : YP/AJ
 Sample : PB168324BL
 Misc :
 ALS Vial : 11 Sample Multiplier: 1

Instrument :
 FID_C
ClientSampleId :
 PB168324BL

Integration File: autoint1.e
 Quant Time: Jun 10 05:23:39 2025
 Quant Method : Z:\pestpcbsrv\HPCHEM1\FID_C\Method\Aliphatic EPH 052425.M
 Quant Title : GC Extractables
 QLast Update : Tue May 27 01:48:55 2025
 Response via : Initial Calibration
 Integrator: ChemStation

Volume Inj. : 1 ul
 Signal Phase : Rxi-1ms
 Signal Info : 20M x 0.18mm x 0.18um

Compound	R.T.	Response	Conc Units

System Monitoring Compounds			
12) S 1-chlorooctadecane (S...	13.113	2680219	29.875 ug/ml
Spiked Amount	50.000	Recovery	= 59.75%

Target Compounds

(f)=RT Delta > 1/2 Window

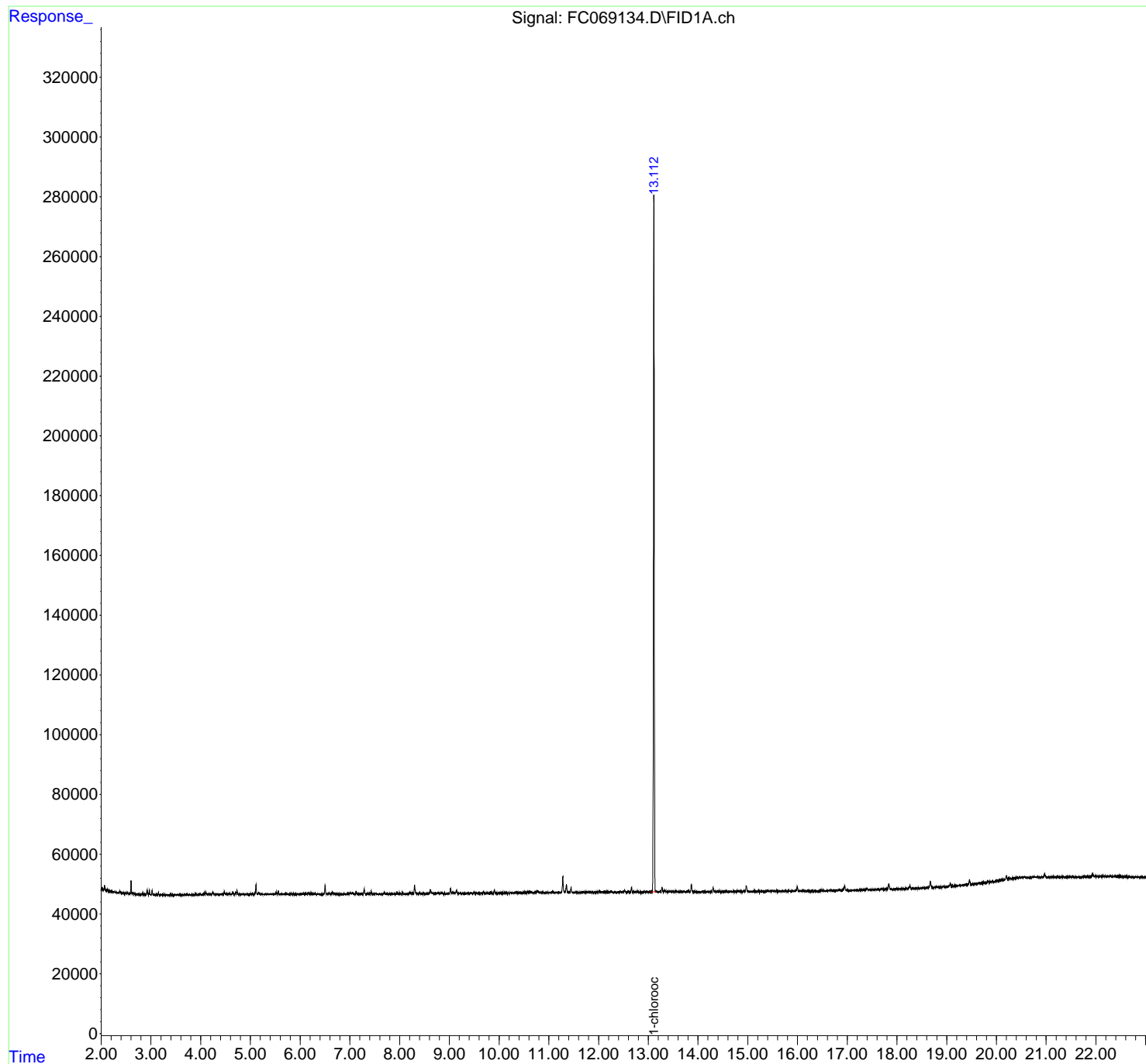
(m)=manual int.

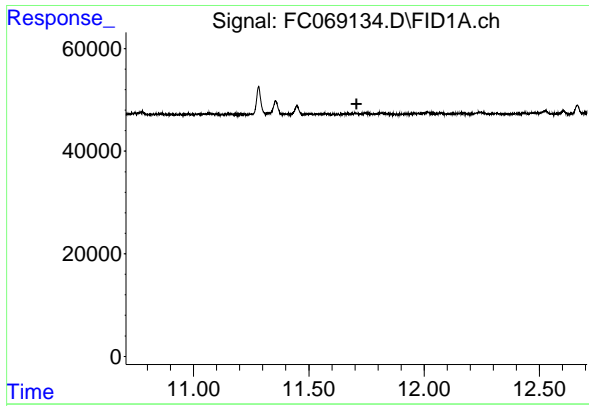
Data Path : Z:\pestpcbsrv\HPCHEM1\FID_C\Data\FC060925AL\
Data File : FC069134.D
Signal(s) : FID1A.ch
Acq On : 09 Jun 2025 16:17
Operator : YP/AJ
Sample : PB168324BL
Misc :
ALS Vial : 11 Sample Multiplier: 1

Instrument :
FID_C
ClientSampleId :
PB168324BL

Integration File: autoint1.e
Quant Time: Jun 10 05:23:39 2025
Quant Method : Z:\pestpcbsrv\HPCHEM1\FID_C\Method\Aliphatic EPH 052425.M
Quant Title : GC Extractables
QLast Update : Tue May 27 01:48:55 2025
Response via : Initial Calibration
Integrator: ChemStation

Volume Inj. : 1 ul
Signal Phase : Rxi-1ms
Signal Info : 20M x 0.18mm x 0.18um

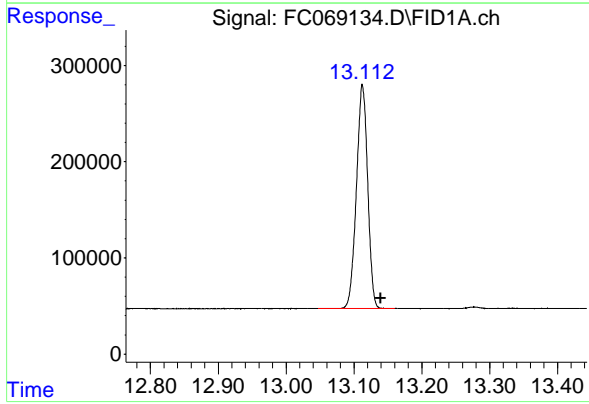




#9 ortho-Terphenyl (SURR)

R.T.: 0.000 min
Exp R.T.: 11.707 min
Response: 0
Conc: N.D.

Instrument :
FID_C
ClientSampleId :
PB168324BL



#12 1-chlorooctadecane (SURR)

R.T.: 13.113 min
Delta R.T.: -0.027 min
Response: 2680219
Conc: 29.88 ug/ml