

Data Path : Z:\pestpcbsrv\HPCHEM1\FID_C\Data\FC061125AL\
 Data File : FC069157.D
 Signal(s) : FID1A.ch
 Acq On : 11 Jun 2025 16:33
 Operator : YP/AJ
 Sample : PB168408BL
 Misc :
 ALS Vial : 11 Sample Multiplier: 1

Instrument :
 FID_C
ClientSampleId :
 PB168408BL

Integration File: autoint1.e
 Quant Time: Jun 12 06:04:26 2025
 Quant Method : Z:\pestpcbsrv\HPCHEM1\FID_C\Method\Aliphatic EPH 052425.M
 Quant Title : GC Extractables
 QLast Update : Tue May 27 01:48:55 2025
 Response via : Initial Calibration
 Integrator: ChemStation

Volume Inj. : 1 ul
 Signal Phase : Rxi-1ms
 Signal Info : 20M x 0.18mm x 0.18um

Compound	R.T.	Response	Conc Units

System Monitoring Compounds			
12) S 1-chlorooctadecane (S...	13.115	2699214	30.087 ug/ml
Spiked Amount	50.000	Recovery	= 60.17%

Target Compounds

(f)=RT Delta > 1/2 Window

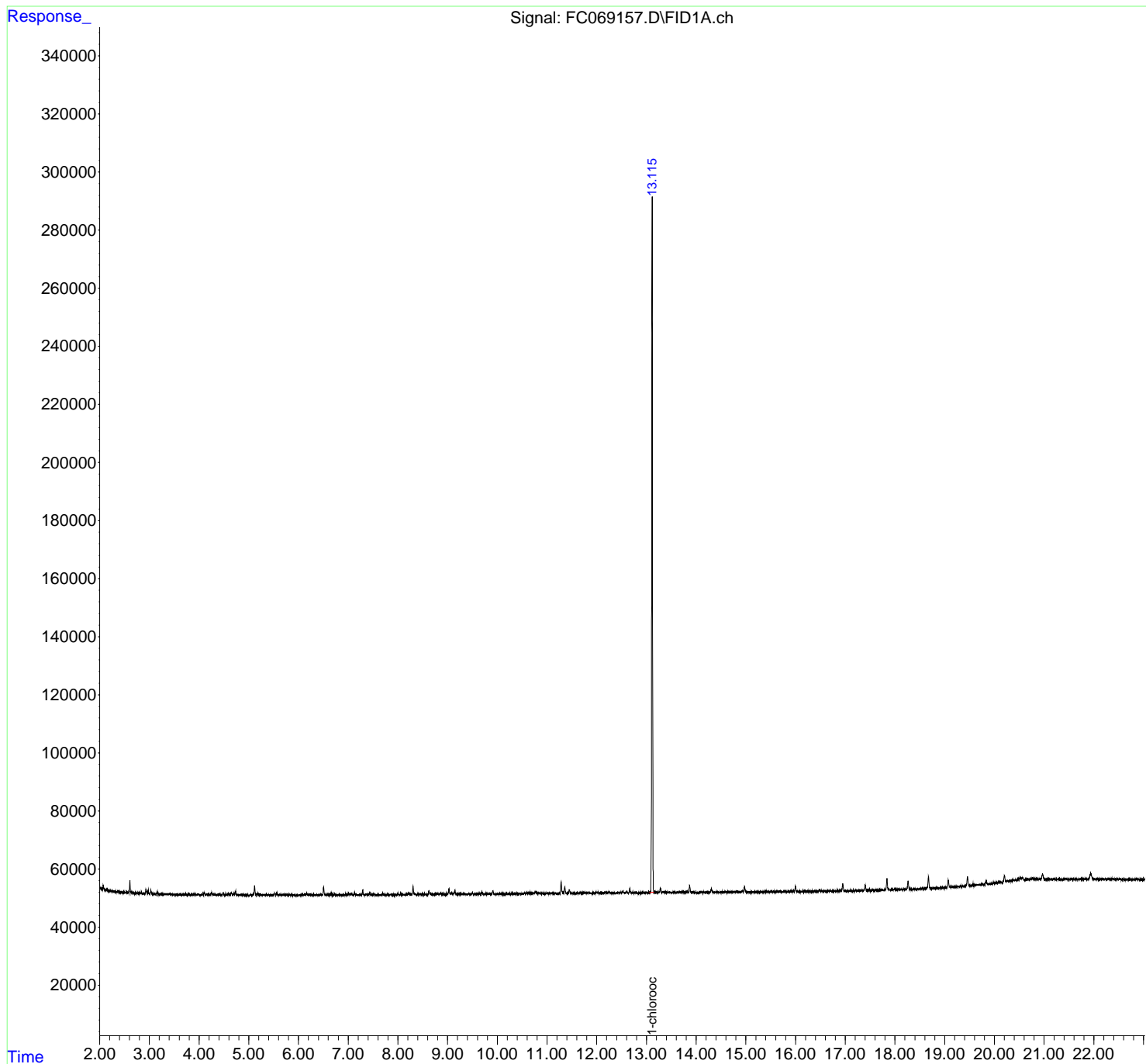
(m)=manual int.

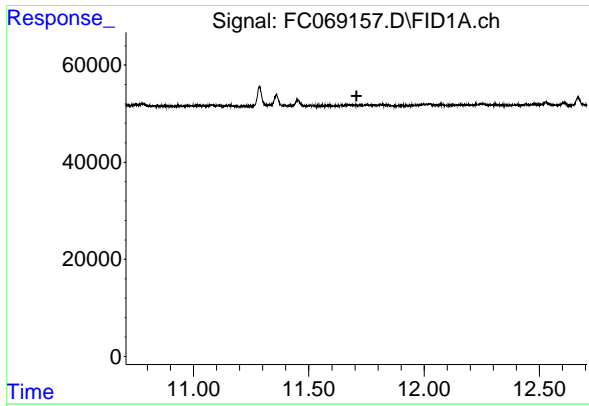
Data Path : Z:\pestpcbsrv\HPCHEM1\FID_C\Data\FC061125AL\
 Data File : FC069157.D
 Signal(s) : FID1A.ch
 Acq On : 11 Jun 2025 16:33
 Operator : YP/AJ
 Sample : PB168408BL
 Misc :
 ALS Vial : 11 Sample Multiplier: 1

Instrument :
 FID_C
 ClientSampleId :
 PB168408BL

Integration File: autoint1.e
 Quant Time: Jun 12 06:04:26 2025
 Quant Method : Z:\pestpcbsrv\HPCHEM1\FID_C\Method\Aliphatic EPH 052425.M
 Quant Title : GC Extractables
 QLast Update : Tue May 27 01:48:55 2025
 Response via : Initial Calibration
 Integrator: ChemStation

Volume Inj. : 1 ul
 Signal Phase : Rxi-1ms
 Signal Info : 20M x 0.18mm x 0.18um

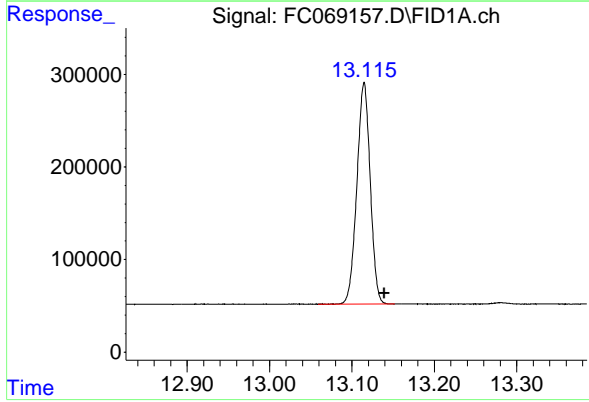




#9 ortho-Terphenyl (SURR)

R.T.: 0.000 min
Exp R.T.: 11.707 min
Response: 0
Conc: N.D.

Instrument :
FID_C
ClientSampleId :
PB168408BL



#12 1-chlorooctadecane (SURR)

R.T.: 13.115 min
Delta R.T.: -0.025 min
Response: 2699214
Conc: 30.09 ug/ml