

Data Path : Z:\pestpcbsrv\HPCHEM1\FID_D\Data\FD060925AR\
 Data File : FD049415.D
 Signal(s) : FID2B.ch
 Acq On : 09 Jun 2025 16:17
 Operator : YP/AJ
 Sample : PB168324BL
 Misc :
 ALS Vial : 61 Sample Multiplier: 1

Instrument :
 FID_D
 ClientSampleId :
 PB168324BL

Integration File: autoint1.e
 Quant Time: Jun 10 02:35:05 2025
 Quant Method : Z:\pestpcbsrv\HPCHEM1\FID_D\methods\Aromatic EPH 052425.M
 Quant Title : GC Extractables
 QLast Update : Tue May 27 03:11:40 2025
 Response via : Initial Calibration
 Integrator: ChemStation

Volume Inj. : 1 µl
 Signal Phase : Rxi-1ms
 Signal Info : 20M x 0.18mm x 0.18µm

Compound	R.T.	Response	Conc Units
System Monitoring Compounds			
4) S 2-Bromonaphthalene (S...	7.733	5192860	31.238 ug/ml
Spiked Amount	50.000	Recovery	= 62.48%
6) S 2-Fluorobiphenyl (SURR)	8.598	3467147	30.308 ug/ml
Spiked Amount	50.000	Recovery	= 60.62%
11) S ortho-Terphenyl (SURR)	11.645	5861022	29.200 ug/ml
Spiked Amount	50.000	Recovery	= 58.40%

Target Compounds

(f)=RT Delta > 1/2 Window

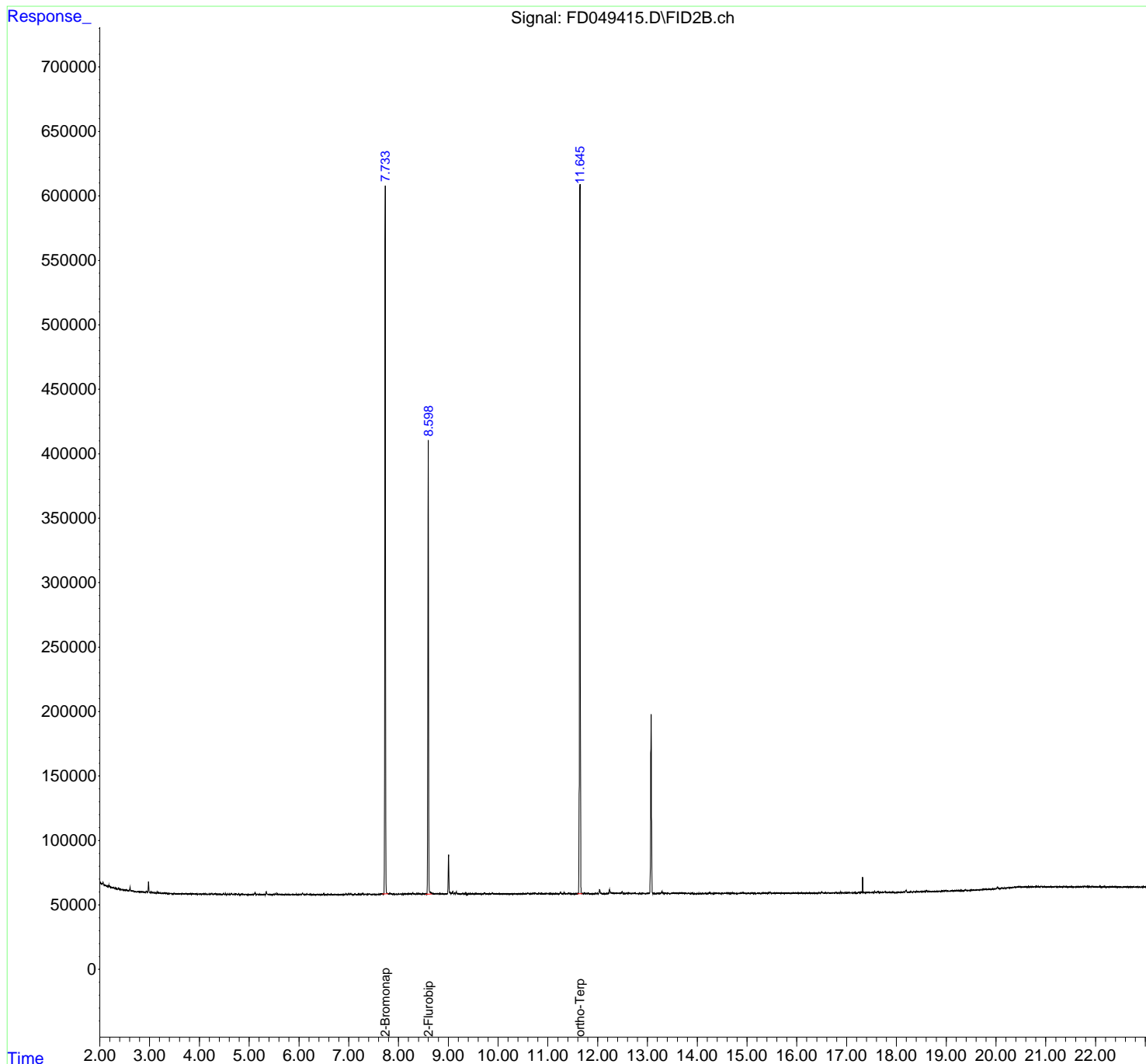
(m)=manual int.

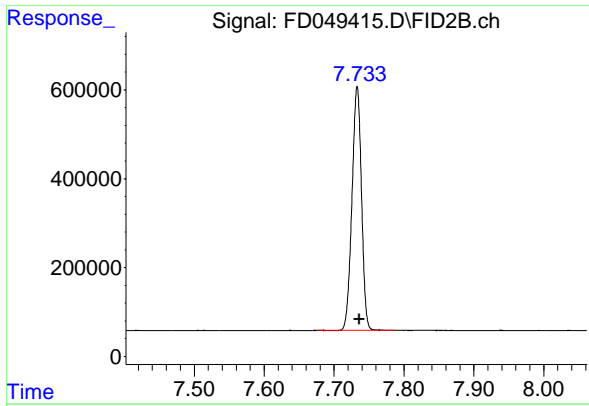
Data Path : Z:\pestpcbsrv\HPCHEM1\FID_D\Data\FD060925AR\
 Data File : FD049415.D
 Signal(s) : FID2B.ch
 Acq On : 09 Jun 2025 16:17
 Operator : YP/AJ
 Sample : PB168324BL
 Misc :
 ALS Vial : 61 Sample Multiplier: 1

Instrument :
 FID_D
ClientSampleId :
 PB168324BL

Integration File: autoint1.e
 Quant Time: Jun 10 02:35:05 2025
 Quant Method : Z:\pestpcbsrv\HPCHEM1\FID_D\methods\Aromatic EPH 052425.M
 Quant Title : GC Extractables
 QLast Update : Tue May 27 03:11:40 2025
 Response via : Initial Calibration
 Integrator: ChemStation

Volume Inj. : 1 µl
 Signal Phase : Rxi-1ms
 Signal Info : 20M x 0.18mm x 0.18µm

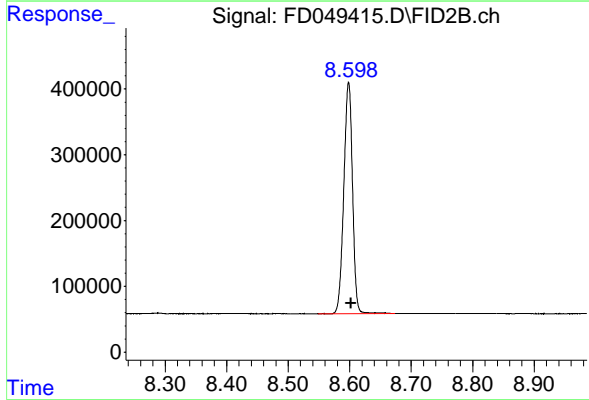




#4 2-Bromonaphthalene (SURR)

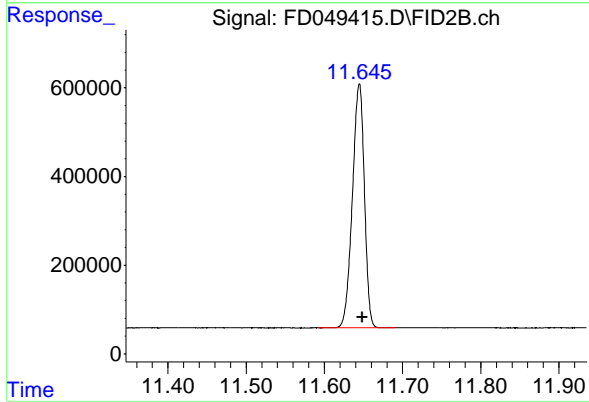
R.T.: 7.733 min
 Delta R.T.: -0.003 min
 Response: 5192860
 Conc: 31.24 ug/ml

Instrument :
 FID_D
 ClientSampleId :
 PB168324BL



#6 2-Fluorobiphenyl (SURR)

R.T.: 8.598 min
 Delta R.T.: -0.004 min
 Response: 3467147
 Conc: 30.31 ug/ml



#11 ortho-Terphenyl (SURR)

R.T.: 11.645 min
 Delta R.T.: -0.004 min
 Response: 5861022
 Conc: 29.20 ug/ml