

Data Path : Z:\pestpcbsrv\HPCHEM1\FID_D\Data\FD061125AR\
 Data File : FD049432.D
 Signal(s) : FID2B.ch
 Acq On : 11 Jun 2025 16:33
 Operator : YP/AJ
 Sample : PB168408BL
 Misc :
 ALS Vial : 61 Sample Multiplier: 1

Instrument :
 FID_D
 ClientSampleId :
 PB168408BL

Integration File: autoint1.e
 Quant Time: Jun 12 04:59:12 2025
 Quant Method : Z:\pestpcbsrv\HPCHEM1\FID_D\methods\Aromatic EPH 052425.M
 Quant Title : GC Extractables
 QLast Update : Tue May 27 03:11:40 2025
 Response via : Initial Calibration
 Integrator: ChemStation

Volume Inj. : 1 µl
 Signal Phase : Rxi-1ms
 Signal Info : 20M x 0.18mm x 0.18µm

Compound	R.T.	Response	Conc Units
System Monitoring Compounds			
4) S 2-Bromonaphthalene (S...	7.733	5580932	33.573 ug/ml
Spiked Amount	50.000	Recovery	= 67.15%
6) S 2-Flurobiphenyl (SURR)	8.598	3722980	32.544 ug/ml
Spiked Amount	50.000	Recovery	= 65.09%
11) S ortho-Terphenyl (SURR)	11.645	6306403	31.419 ug/ml
Spiked Amount	50.000	Recovery	= 62.84%

Target Compounds

(f)=RT Delta > 1/2 Window

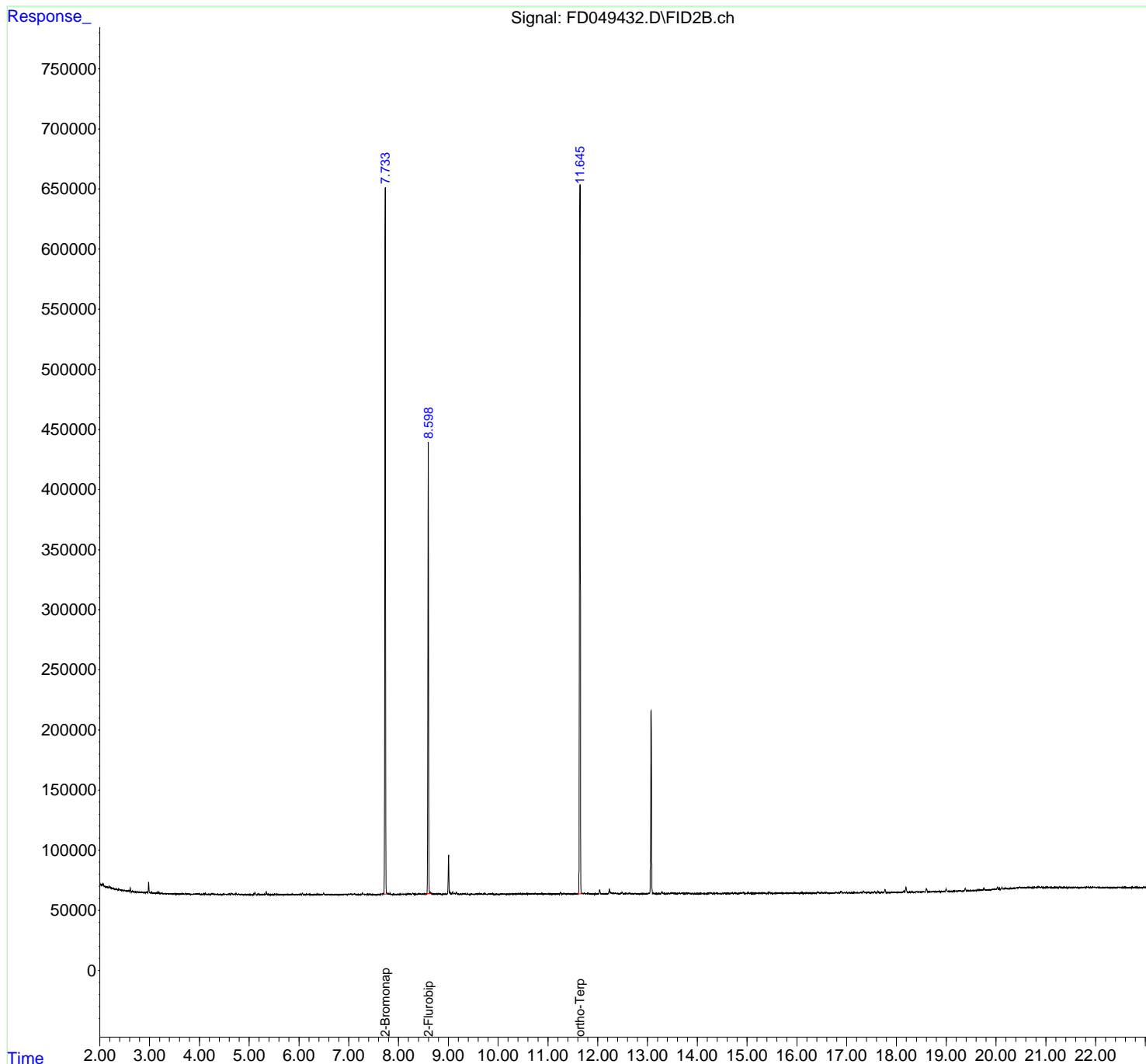
(m)=manual int.

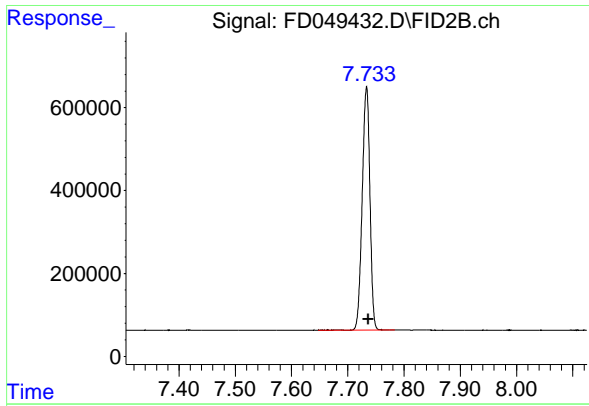
Data Path : Z:\pestpcbsrv\HPCHEM1\FID_D\Data\FD061125AR\
Data File : FD049432.D
Signal(s) : FID2B.ch
Acq On : 11 Jun 2025 16:33
Operator : YP/AJ
Sample : PB168408BL
Misc :
ALS Vial : 61 Sample Multiplier: 1

Instrument :
FID_D
ClientSampleId :
PB168408BL

Integration File: autoint1.e
Quant Time: Jun 12 04:59:12 2025
Quant Method : Z:\pestpcbsrv\HPCHEM1\FID_D\methods\Aromatic EPH 052425.M
Quant Title : GC Extractables
QLast Update : Tue May 27 03:11:40 2025
Response via : Initial Calibration
Integrator: ChemStation

Volume Inj. : 1 µl
Signal Phase : Rxi-1ms
Signal Info : 20M x 0.18mm x 0.18µm

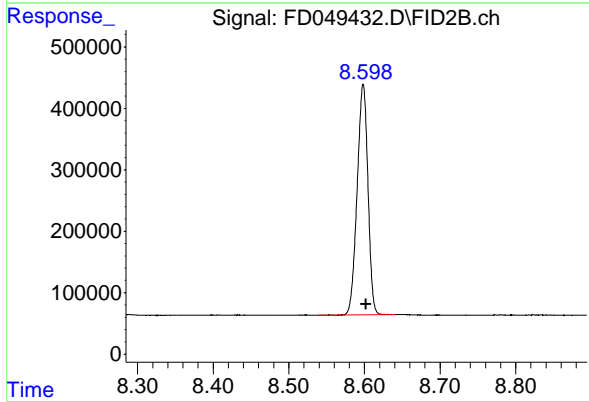




#4 2-Bromonaphthalene (SURR)

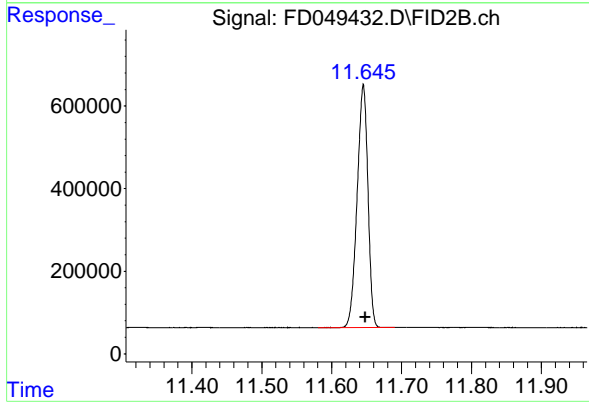
R.T.: 7.733 min
Delta R.T.: -0.003 min
Response: 5580932
Conc: 33.57 ug/ml

Instrument :
FID_D
ClientSampleId :
PB168408BL



#6 2-Fluorobiphenyl (SURR)

R.T.: 8.598 min
Delta R.T.: -0.004 min
Response: 3722980
Conc: 32.54 ug/ml



#11 ortho-Terphenyl (SURR)

R.T.: 11.645 min
Delta R.T.: -0.003 min
Response: 6306403
Conc: 31.42 ug/ml