

Data Path : Z:\pestpcbsrv\HPCHEM1\ECD_S\Data\PS060425\
 Data File : PS030511.D
 Signal(s) : Signal #1: ECD1A.ch Signal #2: ECD2B.ch
 Acq On : 05 Jun 2025 02:28
 Operator : AR\AJ
 Sample : PB168263BS
 Misc :
 ALS Vial : 25 Sample Multiplier: 1

Instrument :
 ECD_S
ClientSampleId :
 PB168263BS

Manual Integrations
APPROVED

Reviewed By :Abdul Mirza 06/05/2025
 Supervised By :mohammad ahmed 06/06/2025

Integration File signal 1: autoint1.e
 Integration File signal 2: autoint2.e
 Quant Time: Jun 05 05:32:51 2025
 Quant Method : Z:\pestpcbsrv\HPCHEM1\ECD_S\Method\PS060425.M
 Quant Title : 8080.M
 QLast Update : Wed Jun 04 13:21:22 2025
 Response via : Initial Calibration
 Integrator: ChemStation

Volume Inj. : 1 µl
 Signal #1 Phase : ZB-MR1 Signal #2 Phase: ZB-MR2
 Signal #1 Info : 30M x 0.32mm x0.5 Signal #2 Info : 30M x 0.32mm x 0.25µm

Compound	RT#1	RT#2	Resp#1	Resp#2	ng/ml	ng/ml

System Monitoring Compounds						
4) S 2,4-DCAA	7.364	7.772	1925.7E6	544.7E6	510.093m	506.410
Target Compounds						
1) T Dalapon	2.712	2.711	2596.0E6	1220.2E6	459.714	445.328
2) T 3,5-DICHL...	6.520	6.716	2659.9E6	742.5E6	490.177	474.690
3) T 4-Nitroph...	7.163	7.302	855.6E6	727.5E6	466.562	464.208
5) T DICAMBA	7.556	7.976	7599.7E6	3089.9E6	492.765	479.681
6) T MCPP	7.737	8.074	433.1E6	109.3E6	43.724	47.290
7) T MCPA	7.887	8.322	578.5E6	148.3E6	45.586	48.064m
8) T DICHLORPROP	8.272	8.696	1769.1E6	715.0E6	486.261	481.711
9) T 2,4-D	8.504	9.032	1741.9E6	781.5E6	478.056	497.007
10) T Pentachlo...	8.813	9.559	27535.8E6	18191.2E6	542.190	503.382
11) T 2,4,5-TP ...	9.396	9.939	10338.3E6	6691.4E6	500.281	487.827
12) T 2,4,5-T	9.690	10.365	8844.2E6	6368.0E6	479.855	487.702
13) T 2,4-DB	10.271	10.933	1363.3E6	550.9E6	448.990	479.217
14) T DINOSEB	11.493	11.318	7061.9E6	4795.8E6	491.267	477.191
15) T Picloram	11.298	12.426	8118.5E6	10135.5E6	405.828	458.954m
16) T DCPA	11.789	12.362	13528.1E6	10229.0E6	511.651	499.880m

(f)=RT Delta > 1/2 Window (#)=Amounts differ by > 25% (m)=manual int.

Data Path : Z:\pestpcbsrv\HPCHEM1\ECD_S\Data\PS060425\
 Data File : PS030511.D
 Signal(s) : Signal #1: ECD1A.ch Signal #2: ECD2B.ch
 Acq On : 05 Jun 2025 02:28
 Operator : AR\AJ
 Sample : PB168263BS
 Misc :
 ALS Vial : 25 Sample Multiplier: 1

Instrument :

ECD_S

ClientSampleId :

PB168263BS

Manual Integrations

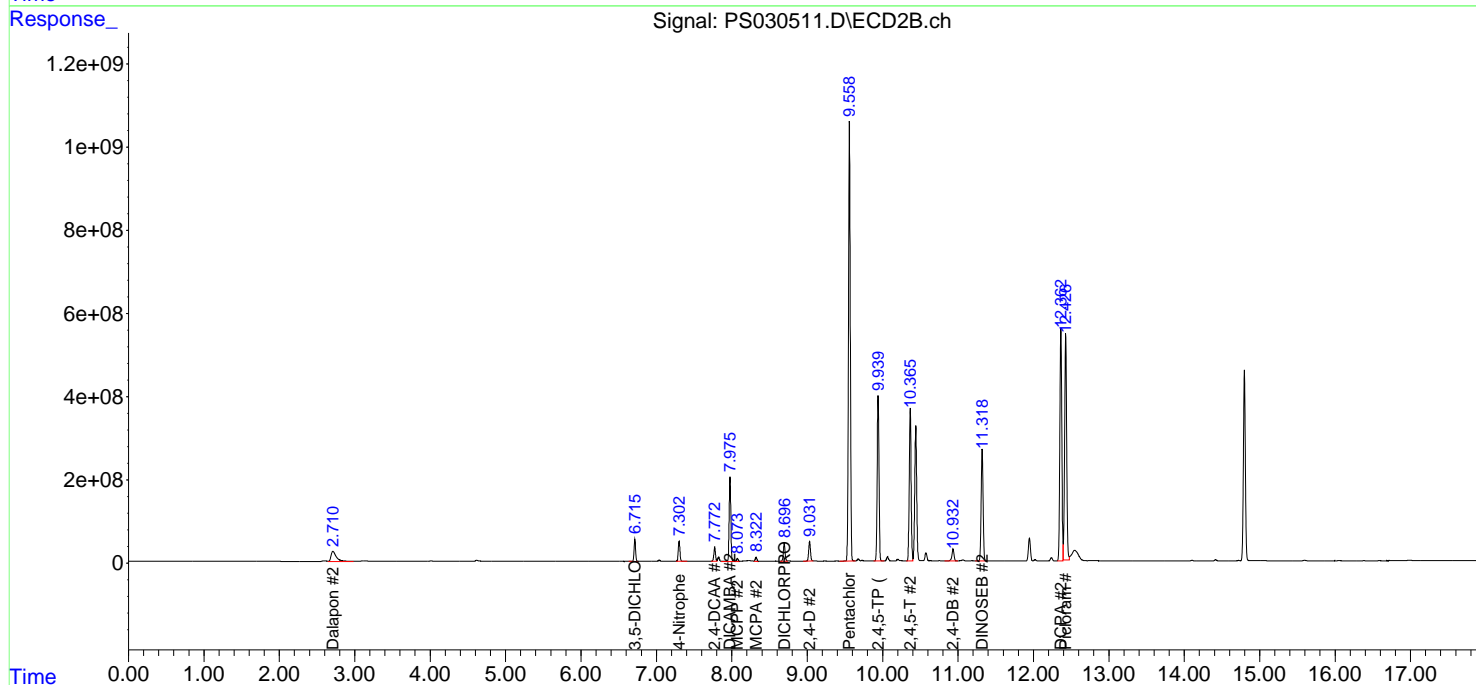
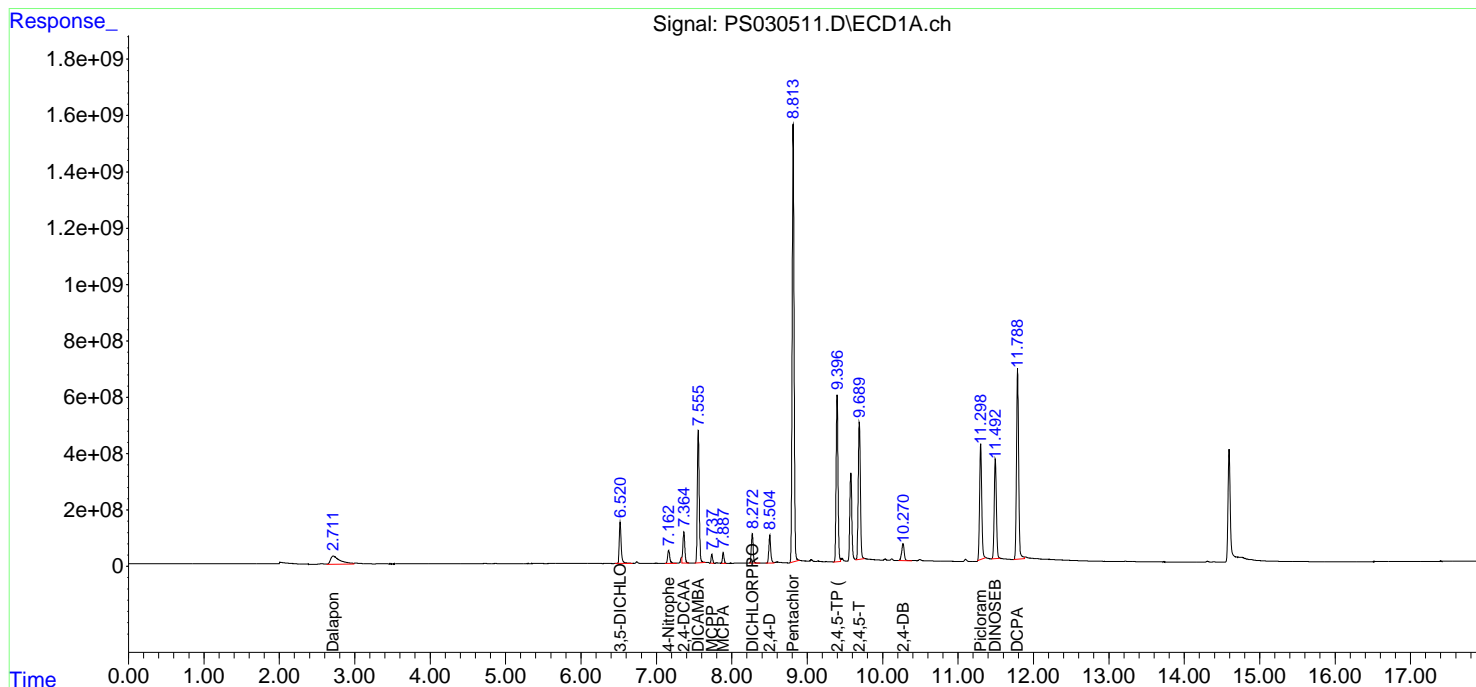
APPROVED

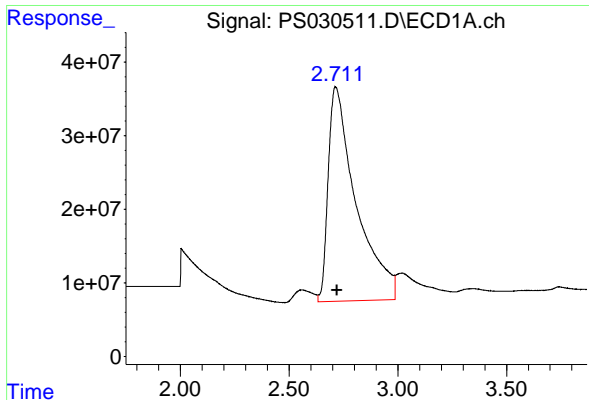
Reviewed By :Abdul Mirza 06/05/2025

Supervised By :mohammad ahmed 06/06/2025

Integration File signal 1: autoint1.e
 Integration File signal 2: autoint2.e
 Quant Time: Jun 05 05:32:51 2025
 Quant Method : Z:\pestpcbsrv\HPCHEM1\ECD_S\Method\PS060425.M
 Quant Title : 8080.M
 QLast Update : Wed Jun 04 13:21:22 2025
 Response via : Initial Calibration
 Integrator: ChemStation

Volume Inj. : 1 µl
 Signal #1 Phase : ZB-MR1 Signal #2 Phase: ZB-MR2
 Signal #1 Info : 30M x 0.32mm x 0.5 Signal #2 Info : 30M x 0.32mm x 0.25µm





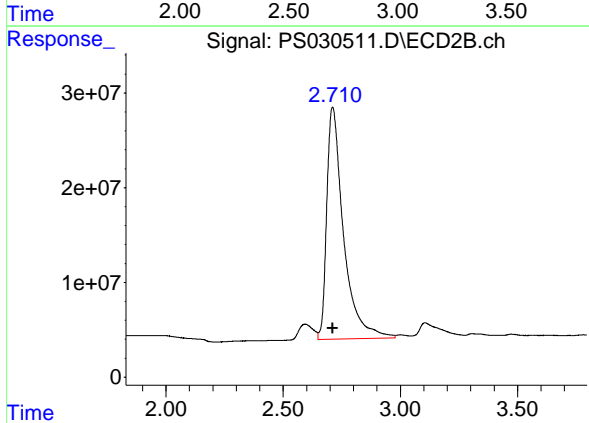
#1 Dalapon

R.T.: 2.712 min
 Delta R.T.: -0.008 min
 Response: 2595990747
 Conc: 459.71 ng/ml

Instrument :
 ECD_S
 ClientSampleId :
 PB168263BS

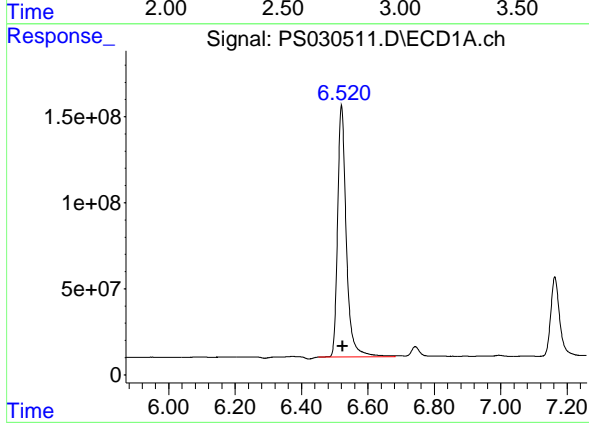
Manual Integrations
 APPROVED

Reviewed By :Abdul Mirza 06/05/2025
 Supervised By :mohammad ahmed 06/06/2025



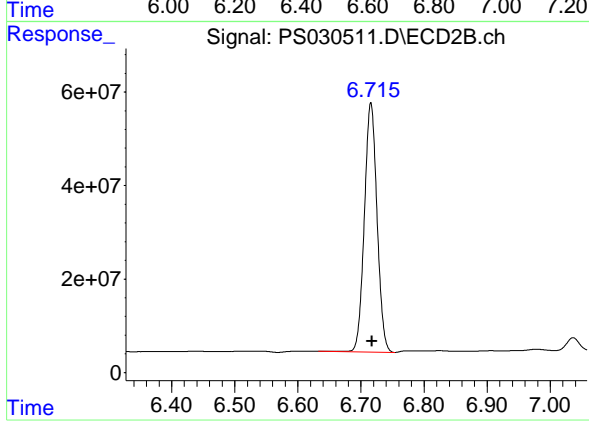
#1 Dalapon

R.T.: 2.711 min
 Delta R.T.: 0.000 min
 Response: 1220206297
 Conc: 445.33 ng/ml



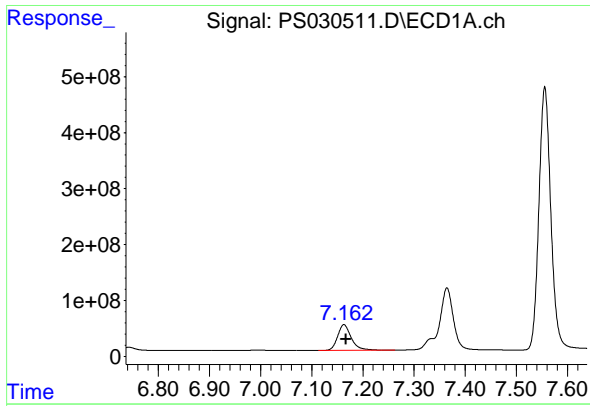
#2 3,5-DICHLOROBENZOIC ACID

R.T.: 6.520 min
 Delta R.T.: -0.004 min
 Response: 2659874623
 Conc: 490.18 ng/ml



#2 3,5-DICHLOROBENZOIC ACID

R.T.: 6.716 min
 Delta R.T.: -0.002 min
 Response: 742532222
 Conc: 474.69 ng/ml



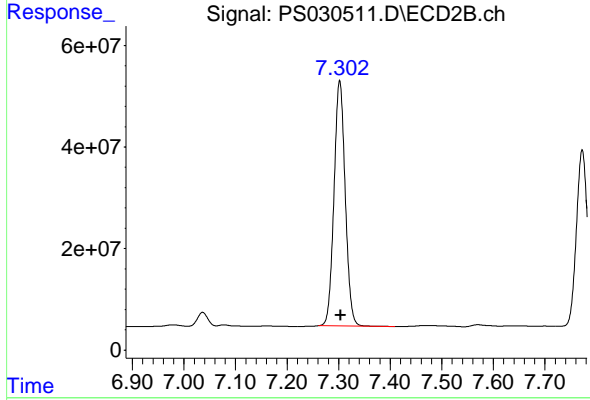
#3 4-Nitrophenol

R.T.: 7.163 min
 Delta R.T.: -0.004 min
 Response: 855559774
 Conc: 466.56 ng/ml

Instrument : ECD_S
 Client Sample Id : PB168263BS

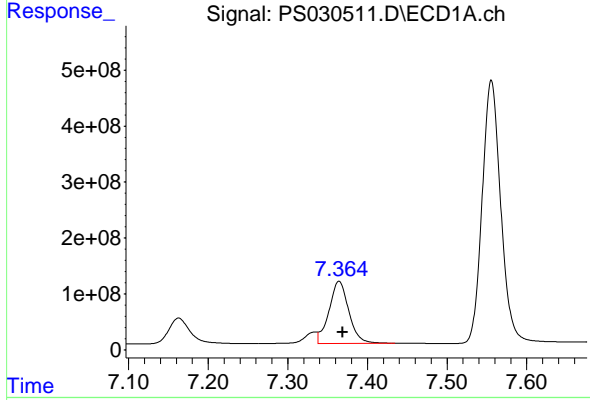
Manual Integrations
 APPROVED

Reviewed By :Abdul Mirza 06/05/2025
 Supervised By :mohammad ahmed 06/06/2025



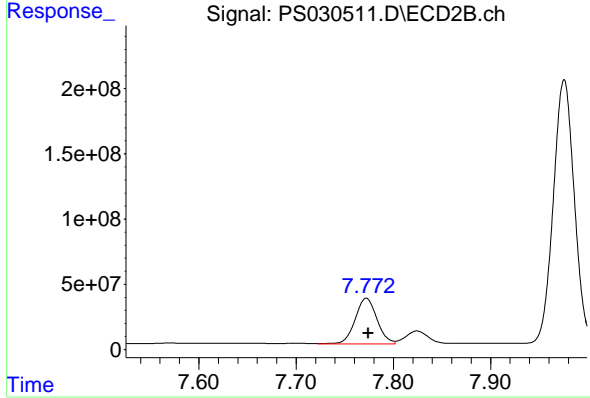
#3 4-Nitrophenol

R.T.: 7.302 min
 Delta R.T.: -0.002 min
 Response: 727526925
 Conc: 464.21 ng/ml



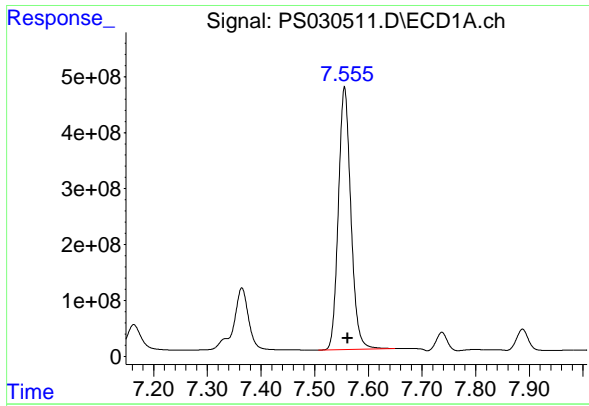
#4 2,4-DCAA

R.T.: 7.364 min
 Delta R.T.: -0.005 min
 Response: 1925674545
 Conc: 510.09 ng/ml m



#4 2,4-DCAA

R.T.: 7.772 min
 Delta R.T.: -0.002 min
 Response: 544699973
 Conc: 506.41 ng/ml



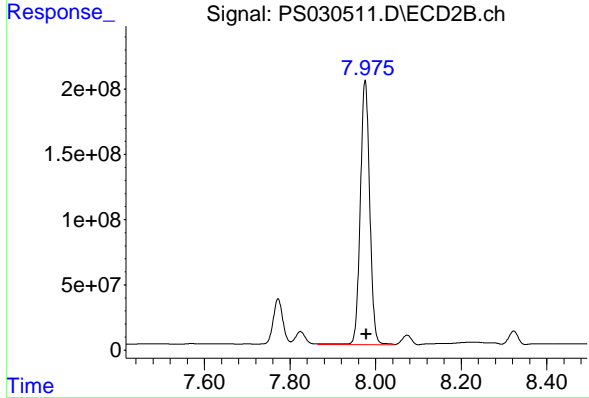
#5 DICAMBA

R.T.: 7.556 min
 Delta R.T.: -0.006 min
 Response: 7599691755
 Conc: 492.77 ng/ml

Instrument :
 ECD_S
 ClientSampleId :
 PB168263BS

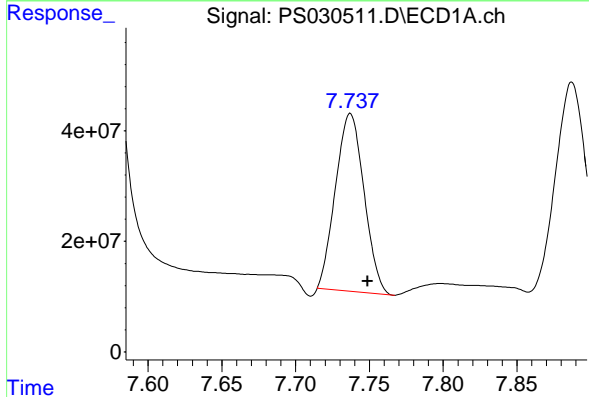
Manual Integrations
 APPROVED

Reviewed By :Abdul Mirza 06/05/2025
 Supervised By :mohammad ahmed 06/06/2025



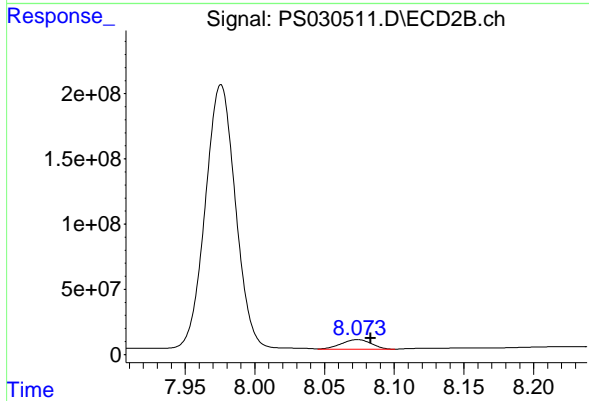
#5 DICAMBA

R.T.: 7.976 min
 Delta R.T.: -0.003 min
 Response: 3089934038
 Conc: 479.68 ng/ml



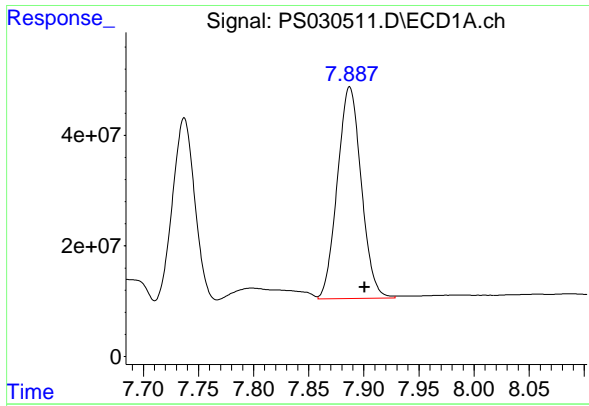
#6 MCPP

R.T.: 7.737 min
 Delta R.T.: -0.012 min
 Response: 433083057
 Conc: 43.72 ug/ml



#6 MCPP

R.T.: 8.074 min
 Delta R.T.: -0.009 min
 Response: 109315328
 Conc: 47.29 ug/ml



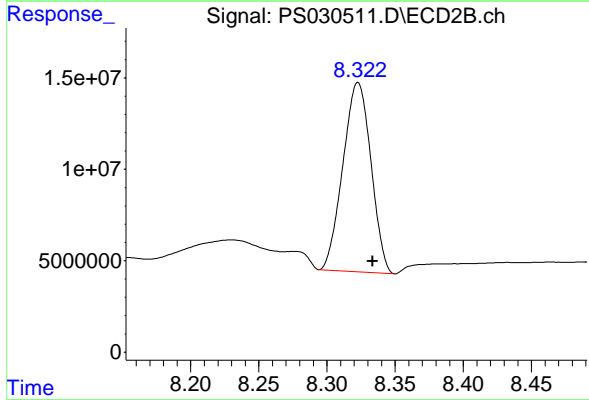
#7 MCPA

R.T.: 7.887 min
 Delta R.T.: -0.013 min
 Response: 578463095
 Conc: 45.59 ug/ml

Instrument :
 ECD_S
 ClientSampleId :
 PB168263BS

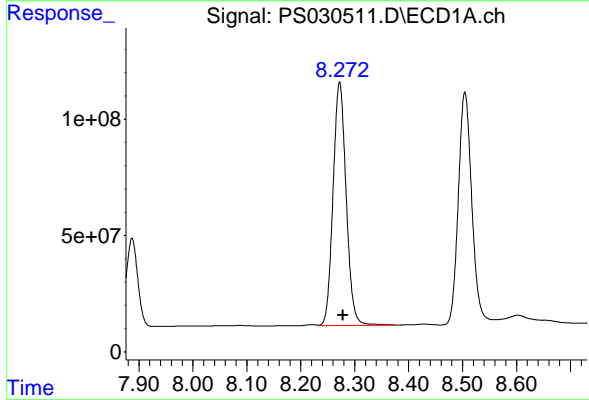
Manual Integrations
 APPROVED

Reviewed By :Abdul Mirza 06/05/2025
 Supervised By :mohammad ahmed 06/06/2025



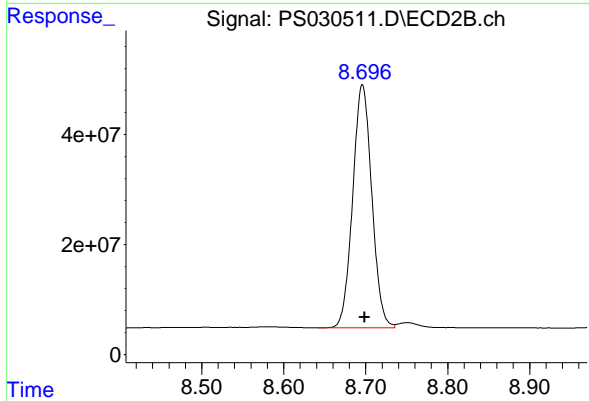
#7 MCPA

R.T.: 8.322 min
 Delta R.T.: -0.011 min
 Response: 148322100
 Conc: 48.06 ug/ml m



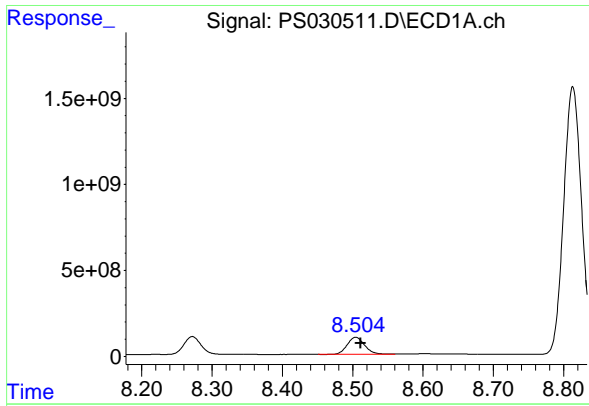
#8 DICHLORPROP

R.T.: 8.272 min
 Delta R.T.: -0.006 min
 Response: 1769088317
 Conc: 486.26 ng/ml



#8 DICHLORPROP

R.T.: 8.696 min
 Delta R.T.: -0.003 min
 Response: 714957402
 Conc: 481.71 ng/ml



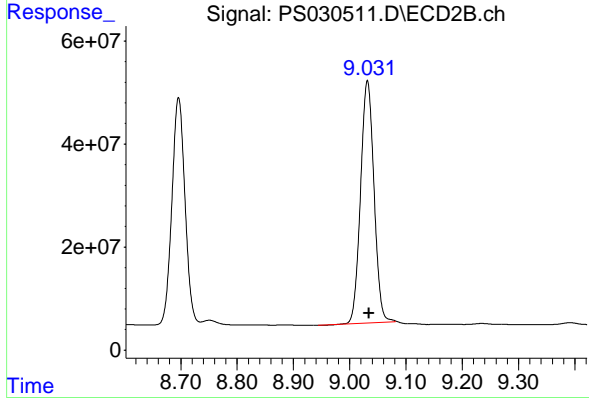
#9 2,4-D

R.T.: 8.504 min
 Delta R.T.: -0.007 min
 Response: 1741851972
 Conc: 478.06 ng/ml

Instrument : ECD_S
 Client Sample Id : PB168263BS

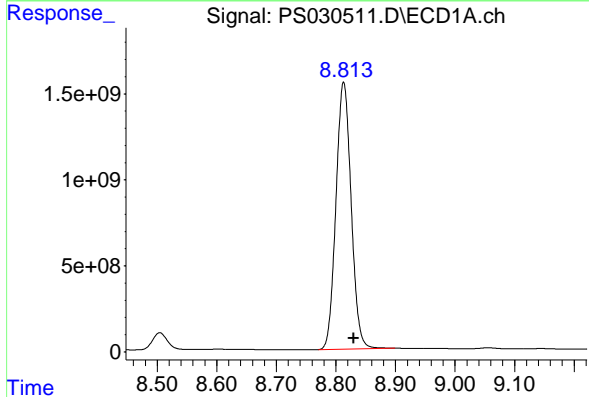
Manual Integrations
 APPROVED

Reviewed By :Abdul Mirza 06/05/2025
 Supervised By :mohammad ahmed 06/06/2025



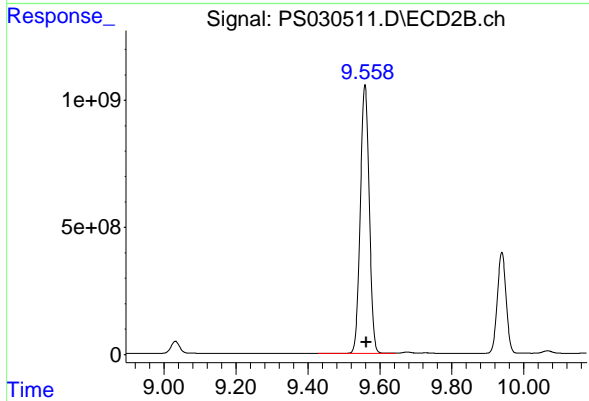
#9 2,4-D

R.T.: 9.032 min
 Delta R.T.: -0.003 min
 Response: 781455160
 Conc: 497.01 ng/ml



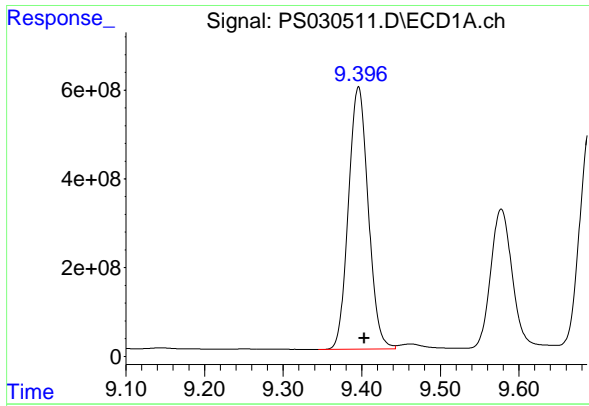
#10 Pentachlorophenol

R.T.: 8.813 min
 Delta R.T.: -0.017 min
 Response: 27535762961
 Conc: 542.19 ng/ml



#10 Pentachlorophenol

R.T.: 9.559 min
 Delta R.T.: -0.004 min
 Response: 18191233386
 Conc: 503.38 ng/ml



#11 2,4,5-TP (SILVEX)

R.T.: 9.396 min
 Delta R.T.: -0.007 min
 Response: 10338342092
 Conc: 500.28 ng/ml

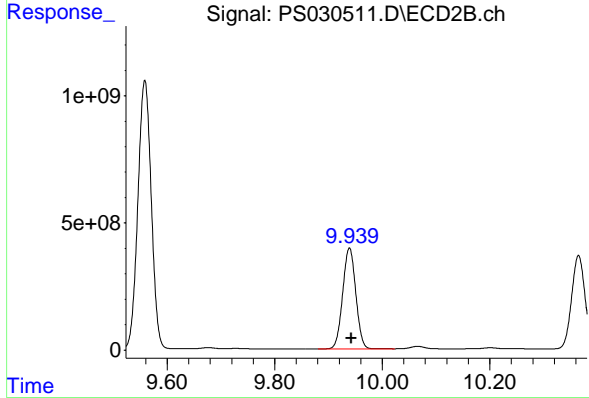
Instrument :

ECD_S

Client Sample Id :
 PB168263BS

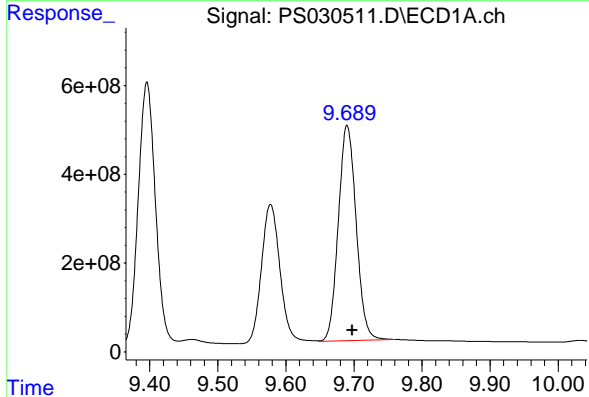
Manual Integrations
 APPROVED

Reviewed By :Abdul Mirza 06/05/2025
 Supervised By :mohammad ahmed 06/06/2025



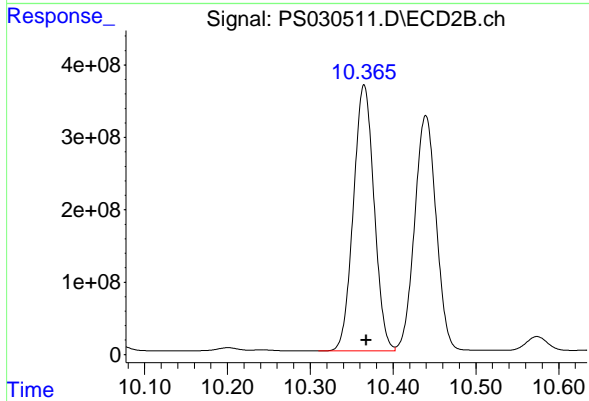
#11 2,4,5-TP (SILVEX)

R.T.: 9.939 min
 Delta R.T.: -0.003 min
 Response: 6691392795
 Conc: 487.83 ng/ml



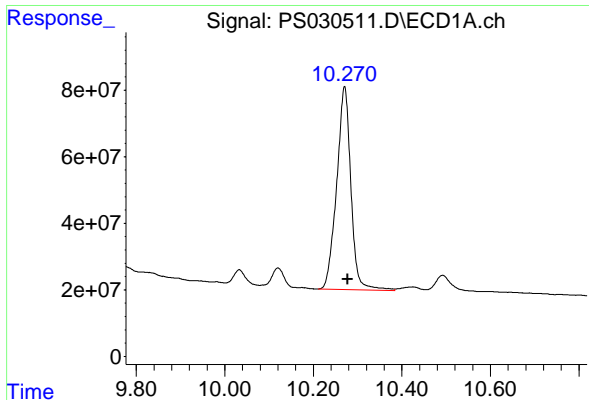
#12 2,4,5-T

R.T.: 9.690 min
 Delta R.T.: -0.008 min
 Response: 8844241240
 Conc: 479.86 ng/ml



#12 2,4,5-T

R.T.: 10.365 min
 Delta R.T.: -0.003 min
 Response: 6367993084
 Conc: 487.70 ng/ml



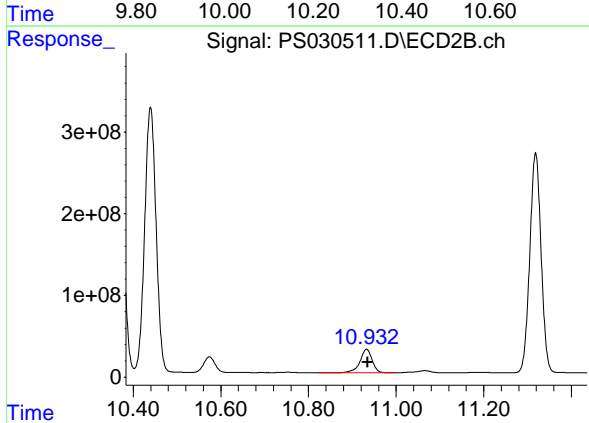
#13 2,4-DB

R.T.: 10.271 min
 Delta R.T.: -0.007 min
 Response: 1363297250
 Conc: 448.99 ng/ml

Instrument :
 ECD_S
 ClientSampleId :
 PB168263BS

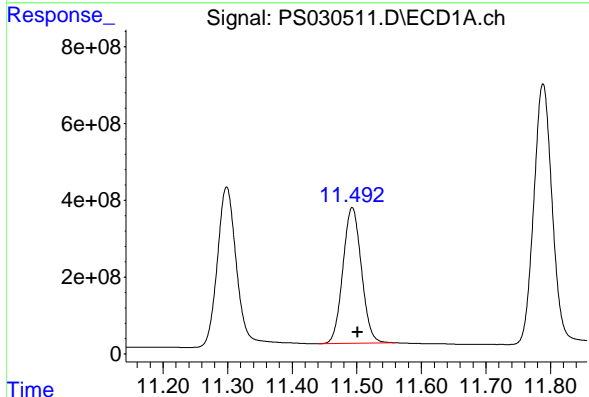
Manual Integrations
 APPROVED

Reviewed By :Abdul Mirza 06/05/2025
 Supervised By :mohammad ahmed 06/06/2025



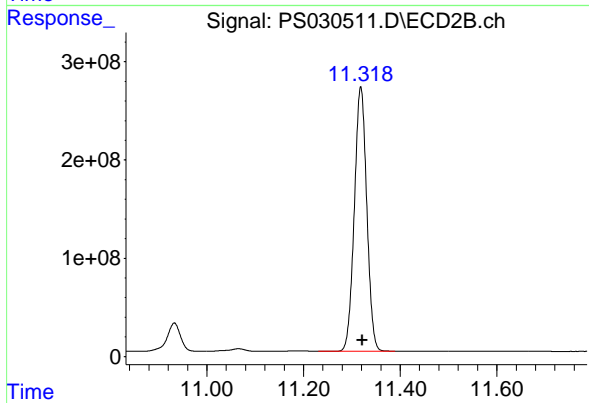
#13 2,4-DB

R.T.: 10.933 min
 Delta R.T.: -0.002 min
 Response: 550885507
 Conc: 479.22 ng/ml



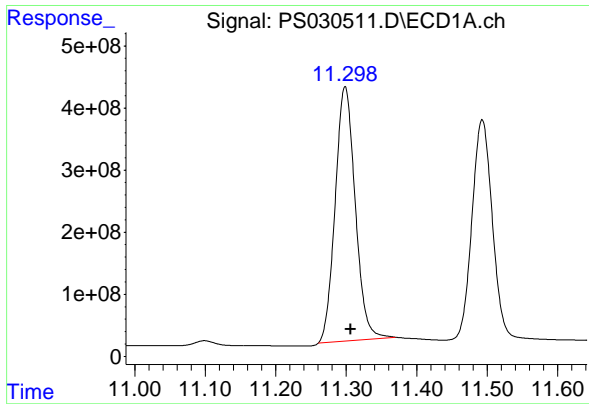
#14 DINOSEB

R.T.: 11.493 min
 Delta R.T.: -0.008 min
 Response: 7061938490
 Conc: 491.27 ng/ml



#14 DINOSEB

R.T.: 11.318 min
 Delta R.T.: -0.003 min
 Response: 4795824575
 Conc: 477.19 ng/ml



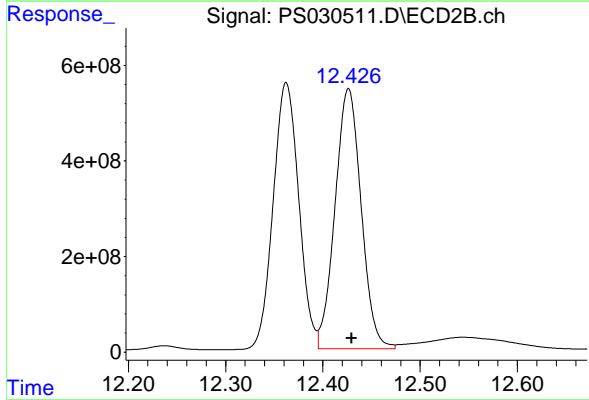
#15 Picloram

R.T.: 11.298 min
 Delta R.T.: -0.008 min
 Response: 8118515276
 Conc: 405.83 ng/ml

Instrument :
 ECD_S
 ClientSampleId :
 PB168263BS

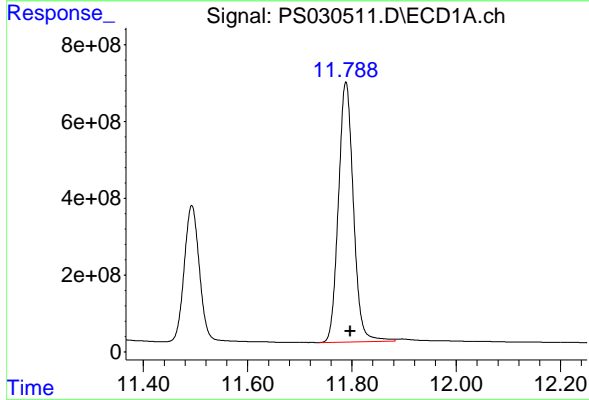
Manual Integrations
 APPROVED

Reviewed By :Abdul Mirza 06/05/2025
 Supervised By :mohammad ahmed 06/06/2025



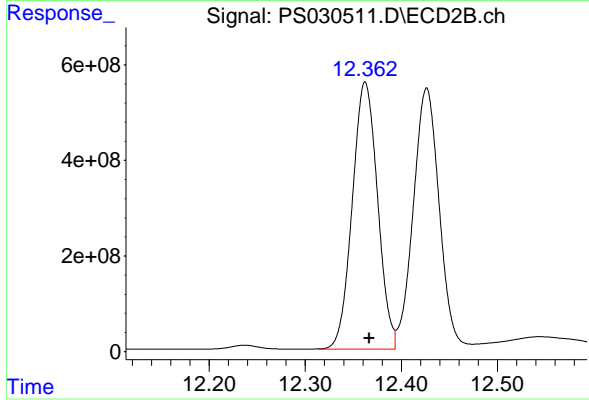
#15 Picloram

R.T.: 12.426 min
 Delta R.T.: -0.004 min
 Response: 10135482820
 Conc: 458.95 ng/ml m



#16 DCPA

R.T.: 11.789 min
 Delta R.T.: -0.008 min
 Response: 13528113342
 Conc: 511.65 ng/ml



#16 DCPA

R.T.: 12.362 min
 Delta R.T.: -0.005 min
 Response: 10229005599
 Conc: 499.88 ng/ml m