

Data Path : Z:\pestpcbsrv\HPCHEM1\ECD_S\Data\PS060425\
 Data File : PS030498.D
 Signal(s) : Signal #1: ECD1A.ch Signal #2: ECD2B.ch
 Acq On : 04 Jun 2025 20:51
 Operator : AR\AJ
 Sample : Q2173-06MS
 Misc :
 ALS Vial : 14 Sample Multiplier: 1

Instrument :
 ECD_S
ClientSampleId :
 OR-400-CF-402B-COMP-23MS

Manual Integrations
APPROVED
 Reviewed By :Abdul Mirza 06/05/2025
 Supervised By :mohammad ahmed 06/06/2025

Integration File signal 1: autoint1.e
 Integration File signal 2: autoint2.e
 Quant Time: Jun 05 01:40:02 2025
 Quant Method : Z:\pestpcbsrv\HPCHEM1\ECD_S\Method\PS060425.M
 Quant Title : 8080.M
 QLast Update : Wed Jun 04 13:21:22 2025
 Response via : Initial Calibration
 Integrator: ChemStation

Volume Inj. : 1 µl
 Signal #1 Phase : ZB-MR1 Signal #2 Phase: ZB-MR2
 Signal #1 Info : 30M x 0.32mm x0.5 Signal #2 Info : 30M x 0.32mm x 0.25µm

| Compound | RT#1 | RT#2 | Resp#1 | Resp#2 | ng/ml | ng/ml |
|-----------------------------|--------|--------|-----------|-----------|----------|------------|
| ----- | | | | | | |
| System Monitoring Compounds | | | | | | |
| 4) S 2,4-DCAA | 7.363 | 7.772 | 2396.9E6 | 482.8E6 | 634.903 | 448.861 # |
| Target Compounds | | | | | | |
| 1) T Dalapon | 2.709 | 2.707 | 594.4E6 | 3441.0E6 | 105.266m | 1255.837 # |
| 2) T 3,5-DICHL... | 6.520 | 6.715 | 2496.2E6 | 650.4E6 | 460.009m | 415.806m |
| 3) T 4-Nitroph... | 7.179 | 7.323 | 71028163 | 180.0E6 | 38.734 | 114.873 # |
| 5) T DICAMBA | 7.556 | 7.975 | 6210.4E6 | 2594.4E6 | 402.680 | 402.756m |
| 6) T MCPP | 7.738 | 8.074 | 344.3E6 | 77250197 | 34.759 | 33.419 |
| 7) T MCPA | 7.887 | 8.322 | 506.1E6 | 134.2E6 | 39.884m | 43.498m |
| 8) T DICHLORPROP | 8.272 | 8.696 | 1681.2E6 | 628.4E6 | 462.112 | 423.369 |
| 9) T 2,4-D | 8.506 | 9.031 | 1841.9E6 | 703.3E6 | 505.514 | 447.283 |
| 10) T Pentachlo... | 8.814 | 9.558 | 24488.5E6 | 15745.5E6 | 482.188 | 435.705 |
| 11) T 2,4,5-TP ... | 9.397 | 9.939 | 10124.5E6 | 6295.3E6 | 489.930 | 458.949 |
| 12) T 2,4,5-T | 9.692 | 10.365 | 8200.8E6 | 5776.6E6 | 444.945 | 442.407 |
| 13) T 2,4-DB | 10.273 | 10.932 | 1378.9E6 | 485.0E6 | 454.131 | 421.890 |
| 14) T DINOSEB | 11.495 | 11.319 | 5139.6E6 | 3354.6E6 | 357.538 | 333.791 |
| 15) T Picloram | 11.300 | 12.426 | 7693.0E6 | 8293.3E6 | 384.557 | 375.537 |
| 16) T DCPA | 11.789 | 12.362 | 10394.0E6 | 8718.7E6 | 393.114 | 426.072m |
| ----- | | | | | | |

(f)=RT Delta > 1/2 Window (#)=Amounts differ by > 25% (m)=manual int.

Data Path : Z:\pestpcbsrv\HPCHEM1\ECD_S\Data\PS060425\
 Data File : PS030498.D
 Signal(s) : Signal #1: ECD1A.ch Signal #2: ECD2B.ch
 Acq On : 04 Jun 2025 20:51
 Operator : AR\AJ
 Sample : Q2173-06MS
 Misc :
 ALS Vial : 14 Sample Multiplier: 1

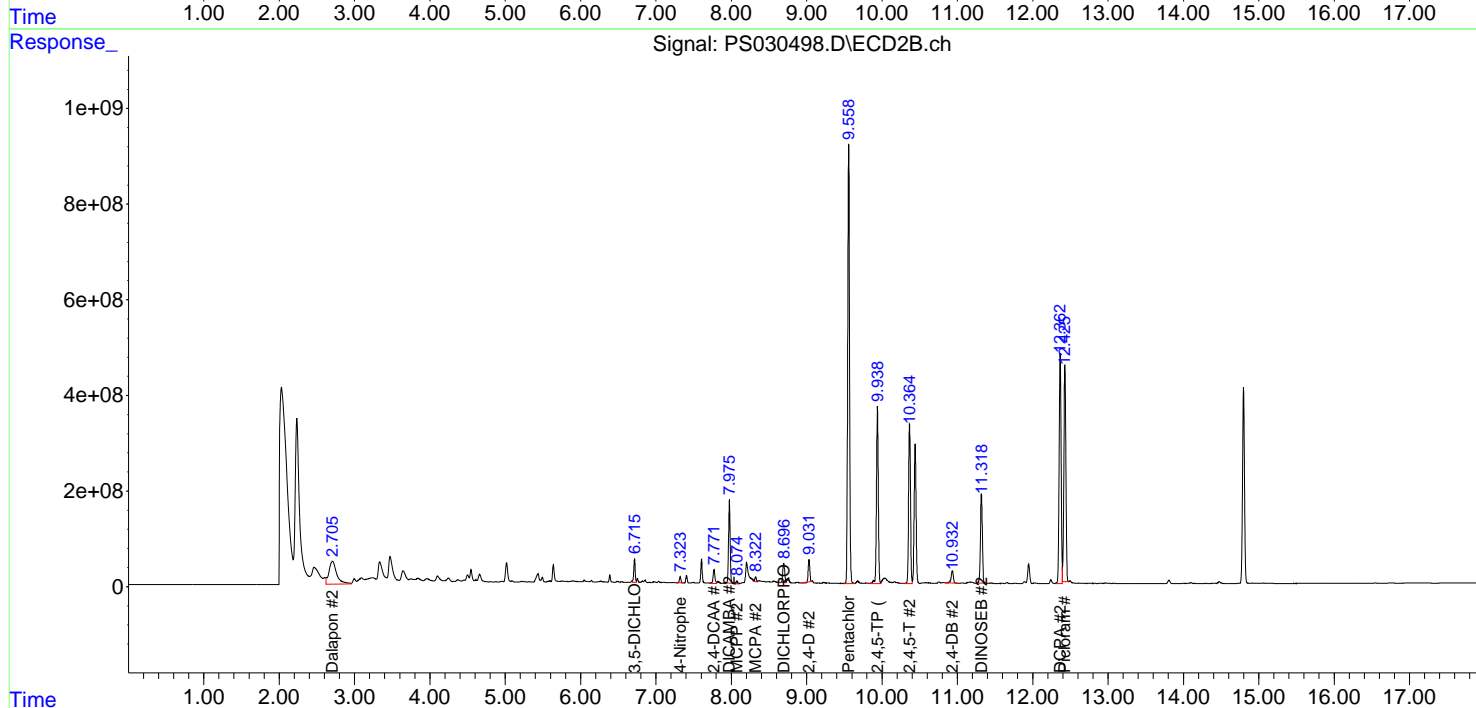
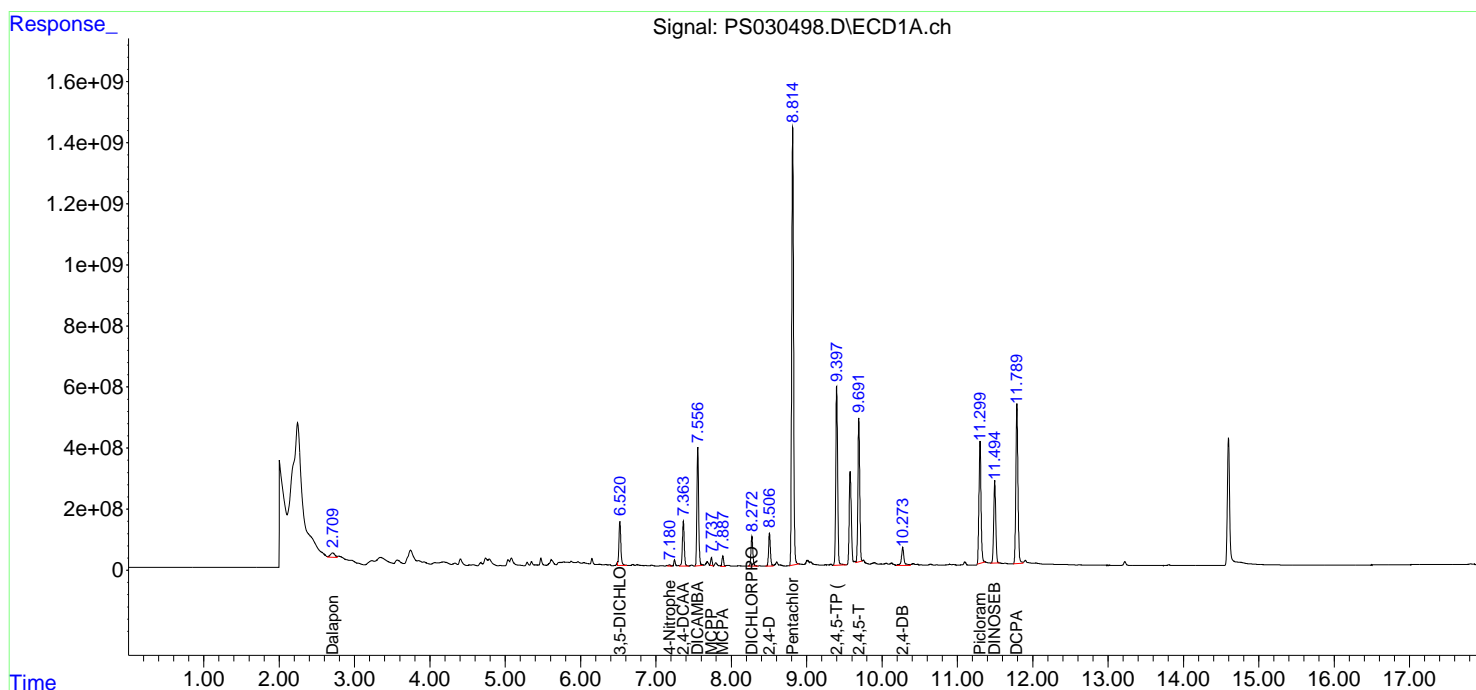
Instrument :
 ECD_S
 ClientSampleId :
 OR-400-CF-402B-COMP-23MS

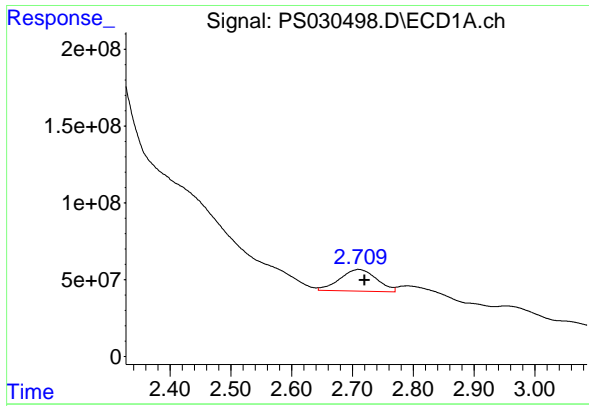
Manual Integrations
 APPROVED

Reviewed By :Abdul Mirza 06/05/2025
 Supervised By :mohammad ahmed 06/06/2025

Integration File signal 1: autoint1.e
 Integration File signal 2: autoint2.e
 Quant Time: Jun 05 01:40:02 2025
 Quant Method : Z:\pestpcbsrv\HPCHEM1\ECD_S\Method\PS060425.M
 Quant Title : 8080.M
 QLast Update : Wed Jun 04 13:21:22 2025
 Response via : Initial Calibration
 Integrator: ChemStation

Volume Inj. : 1 µl
 Signal #1 Phase : ZB-MR1 Signal #2 Phase: ZB-MR2
 Signal #1 Info : 30M x 0.32mm x 0.5 Signal #2 Info : 30M x 0.32mm x 0.25µm



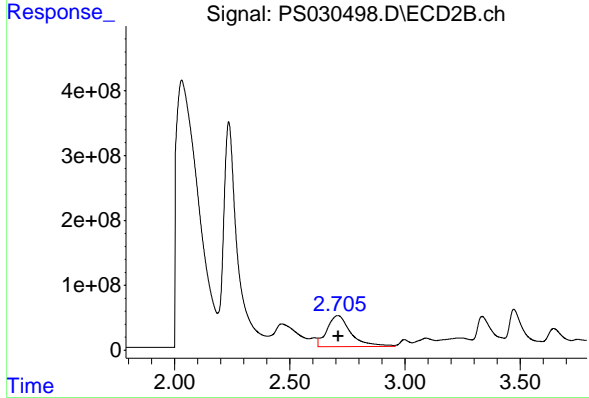


#1 Dalapon
 R.T.: 2.709 min
 Delta R.T.: -0.011 min
 Response: 594432998
 Conc: 105.27 ng/ml

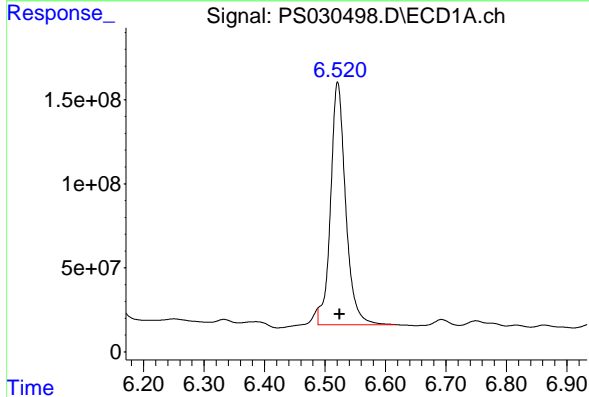
Instrument : ECD_S
 Client Sample Id : OR-400-CF-402B-COMP-23MS

Manual Integrations
 APPROVED

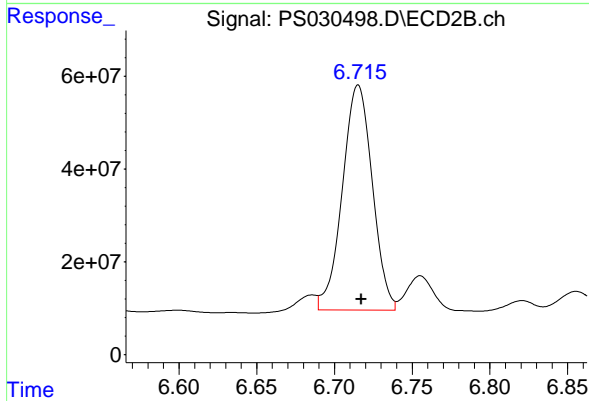
Reviewed By :Abdul Mirza 06/05/2025
 Supervised By :mohammad ahmed 06/06/2025



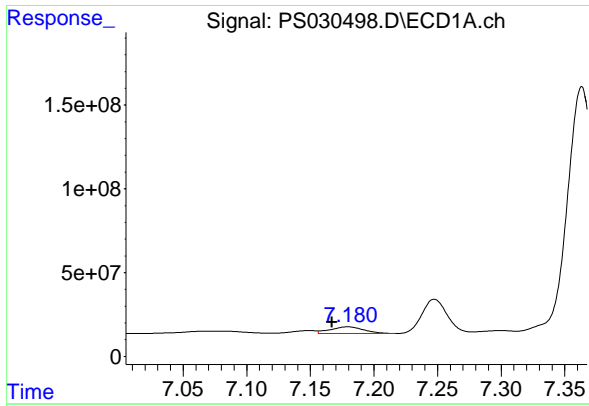
#1 Dalapon
 R.T.: 2.707 min
 Delta R.T.: -0.003 min
 Response: 3441011288
 Conc: 1255.84 ng/ml



#2 3,5-DICHLOROBENZOIC ACID
 R.T.: 6.520 min
 Delta R.T.: -0.004 min
 Response: 2496169195
 Conc: 460.01 ng/ml m



#2 3,5-DICHLOROBENZOIC ACID
 R.T.: 6.715 min
 Delta R.T.: -0.002 min
 Response: 650424235
 Conc: 415.81 ng/ml m



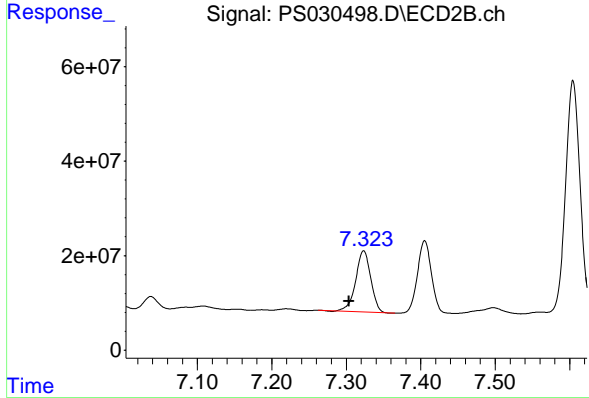
#3 4-Nitrophenol

R.T.: 7.179 min
 Delta R.T.: 0.013 min
 Response: 71028163
 Conc: 38.73 ng/ml

Instrument : ECD_S
 Client Sample Id : OR-400-CF-402B-COMP-23MS

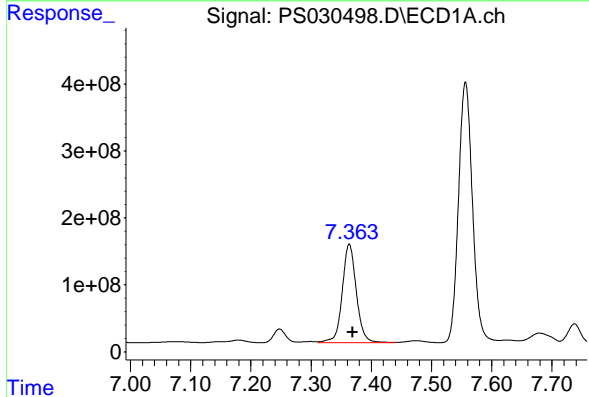
Manual Integrations
 APPROVED

Reviewed By :Abdul Mirza 06/05/2025
 Supervised By :mohammad ahmed 06/06/2025



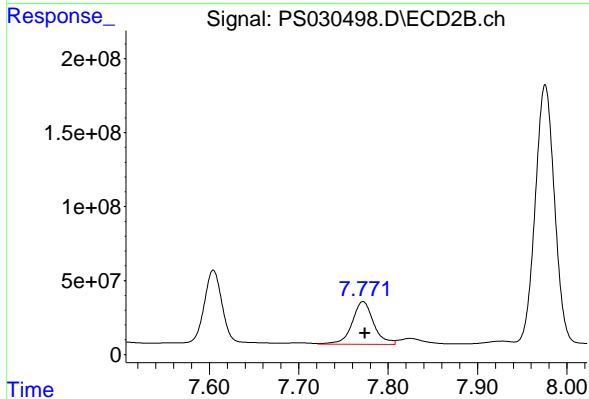
#3 4-Nitrophenol

R.T.: 7.323 min
 Delta R.T.: 0.019 min
 Response: 180034280
 Conc: 114.87 ng/ml



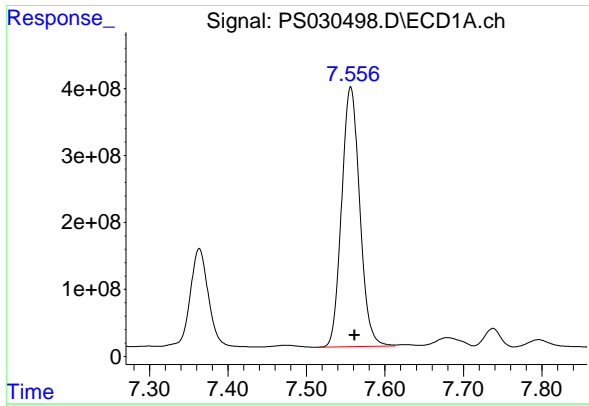
#4 2,4-DCAA

R.T.: 7.363 min
 Delta R.T.: -0.006 min
 Response: 2396850036
 Conc: 634.90 ng/ml



#4 2,4-DCAA

R.T.: 7.772 min
 Delta R.T.: -0.002 min
 Response: 482799328
 Conc: 448.86 ng/ml



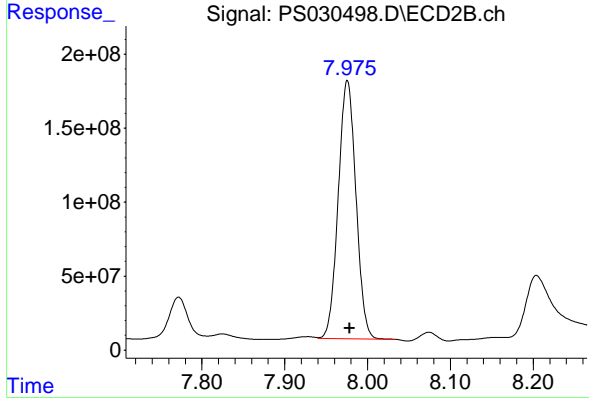
#5 DICAMBA

R.T.: 7.556 min
 Delta R.T.: -0.005 min
 Response: 6210350479
 Conc: 402.68 ng/ml

Instrument : ECD_S
 ClientSampleId : OR-400-CF-402B-COMP-23MS

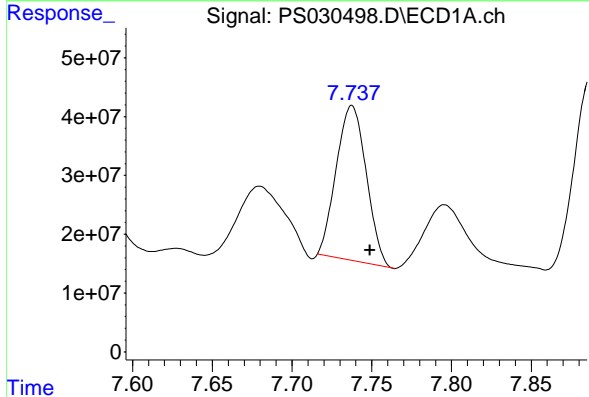
Manual Integrations
 APPROVED

Reviewed By :Abdul Mirza 06/05/2025
 Supervised By :mohammad ahmed 06/06/2025



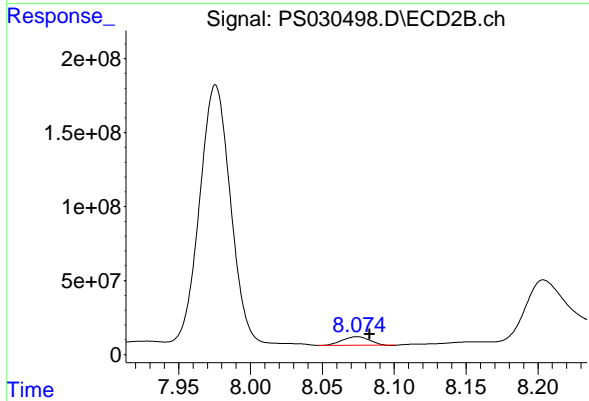
#5 DICAMBA

R.T.: 7.975 min
 Delta R.T.: -0.003 min
 Response: 2594412447
 Conc: 402.76 ng/ml m



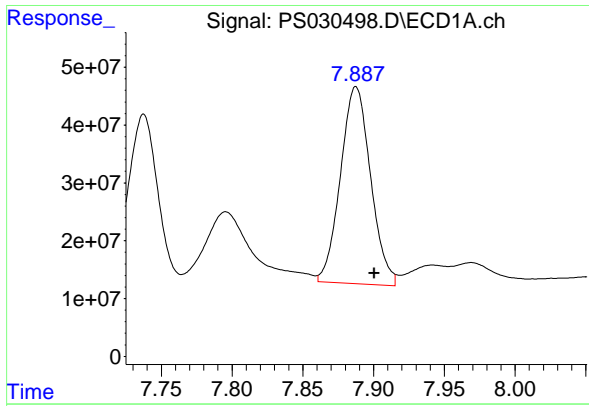
#6 MCPP

R.T.: 7.738 min
 Delta R.T.: -0.011 min
 Response: 344282711
 Conc: 34.76 ug/ml



#6 MCPP

R.T.: 8.074 min
 Delta R.T.: -0.009 min
 Response: 77250197
 Conc: 33.42 ug/ml



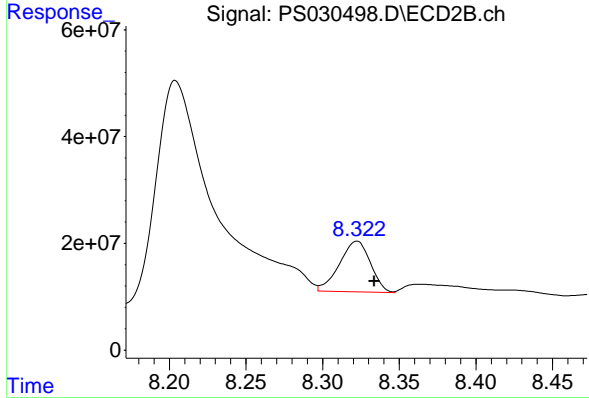
#7 MCPA

R.T.: 7.887 min
 Delta R.T.: -0.014 min
 Response: 506100654
 Conc: 39.88 ug/ml

Instrument :
 ECD_S
 ClientSampleId :
 OR-400-CF-402B-COMP-23MS

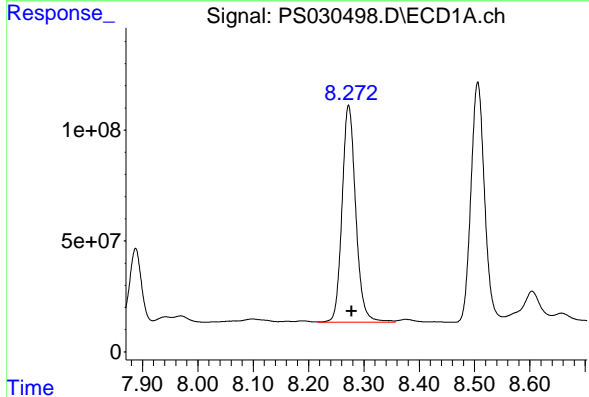
Manual Integrations
 APPROVED

Reviewed By :Abdul Mirza 06/05/2025
 Supervised By :mohammad ahmed 06/06/2025



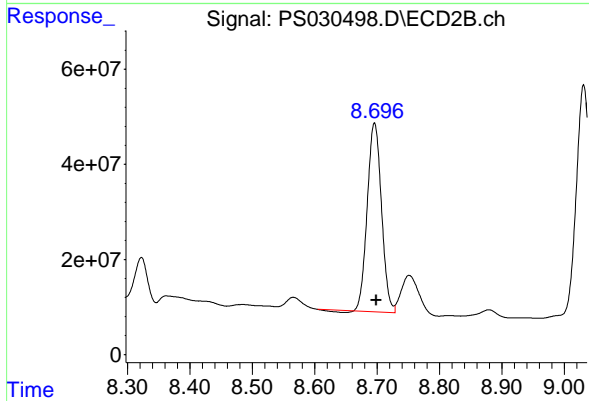
#7 MCPA

R.T.: 8.322 min
 Delta R.T.: -0.012 min
 Response: 134232171
 Conc: 43.50 ug/ml m



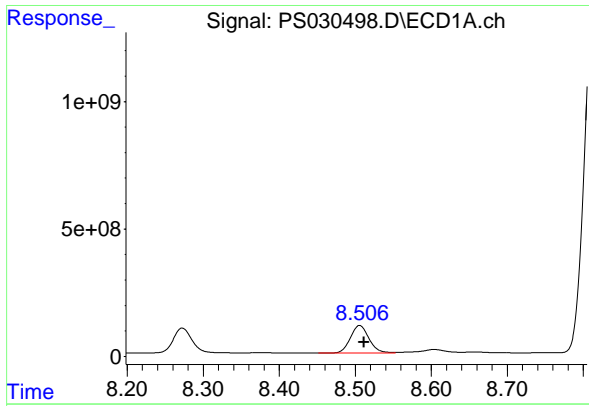
#8 DICHLORPROP

R.T.: 8.272 min
 Delta R.T.: -0.006 min
 Response: 1681229629
 Conc: 462.11 ng/ml



#8 DICHLORPROP

R.T.: 8.696 min
 Delta R.T.: -0.003 min
 Response: 628366039
 Conc: 423.37 ng/ml



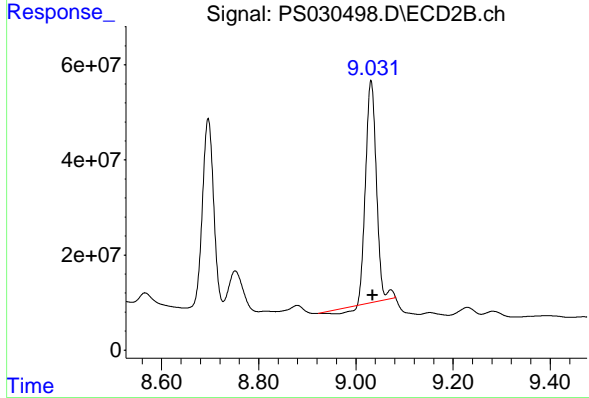
#9 2,4-D

R.T.: 8.506 min
 Delta R.T.: -0.005 min
 Response: 1841897094
 Conc: 505.51 ng/ml

Instrument : ECD_S
 Client Sample Id : OR-400-CF-402B-COMP-23MS

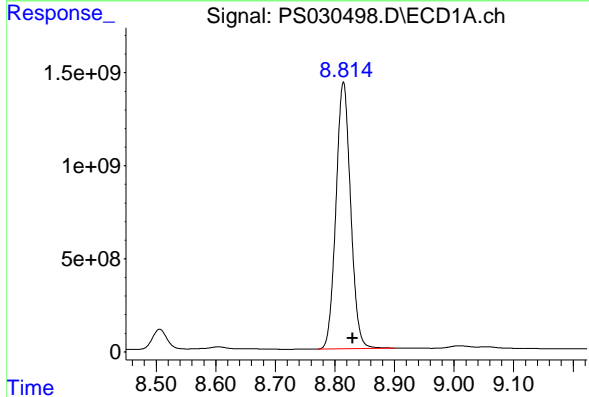
Manual Integrations
 APPROVED

Reviewed By :Abdul Mirza 06/05/2025
 Supervised By :mohammad ahmed 06/06/2025



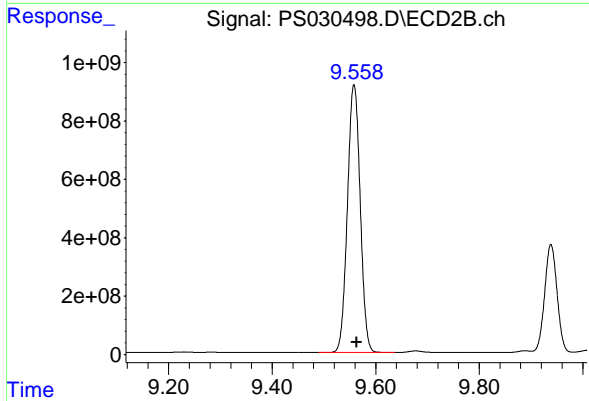
#9 2,4-D

R.T.: 9.031 min
 Delta R.T.: -0.003 min
 Response: 703272611
 Conc: 447.28 ng/ml



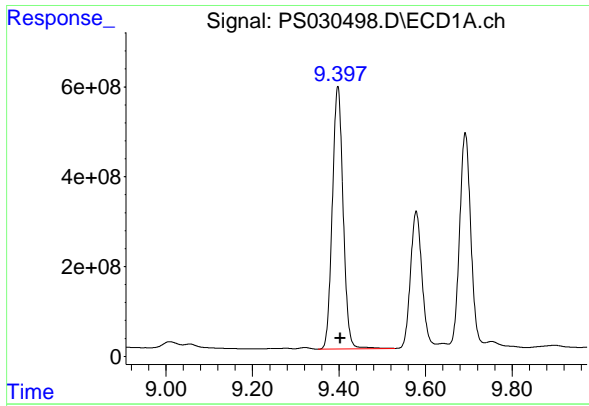
#10 Pentachlorophenol

R.T.: 8.814 min
 Delta R.T.: -0.015 min
 Response: 24488462900
 Conc: 482.19 ng/ml



#10 Pentachlorophenol

R.T.: 9.558 min
 Delta R.T.: -0.005 min
 Response: 15745504203
 Conc: 435.70 ng/ml



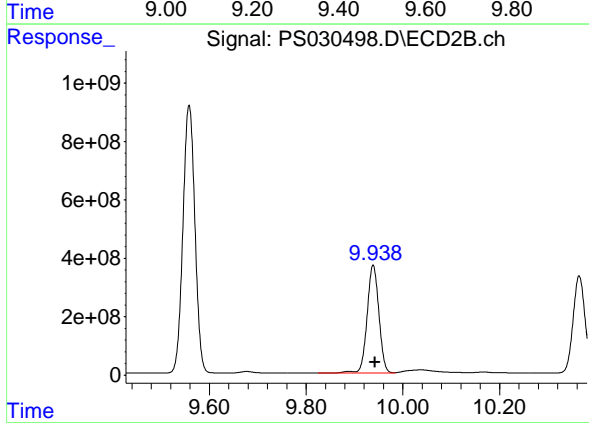
#11 2,4,5-TP (SILVEX)

R.T.: 9.397 min
 Delta R.T.: -0.006 min
 Response: 10124452710
 Conc: 489.93 ng/ml

Instrument : ECD_S
 ClientSampleId : OR-400-CF-402B-COMP-23MS

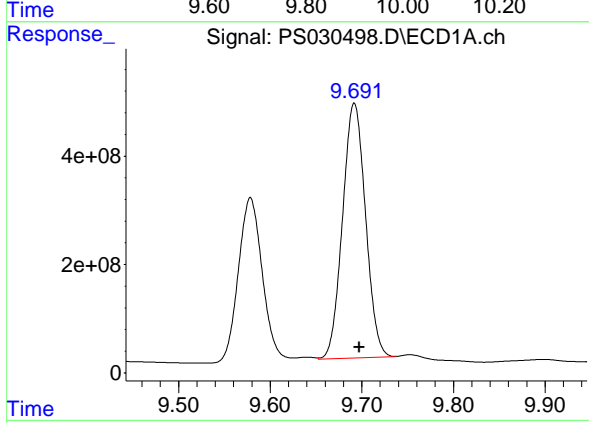
Manual Integrations
 APPROVED

Reviewed By :Abdul Mirza 06/05/2025
 Supervised By :mohammad ahmed 06/06/2025



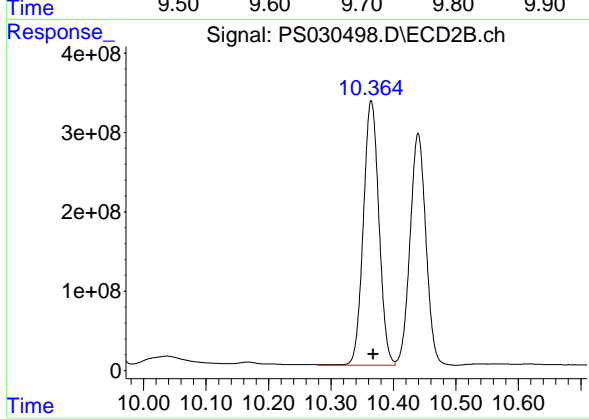
#11 2,4,5-TP (SILVEX)

R.T.: 9.939 min
 Delta R.T.: -0.004 min
 Response: 6295287768
 Conc: 458.95 ng/ml



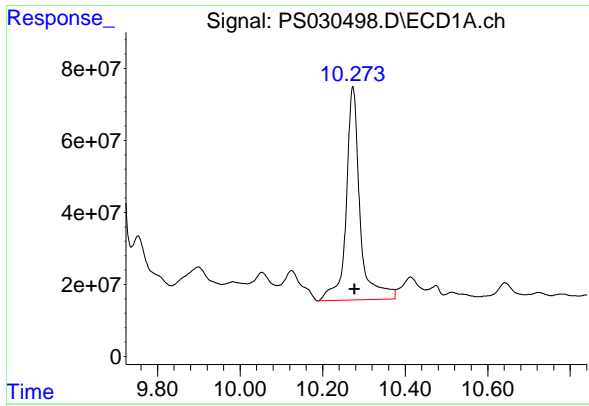
#12 2,4,5-T

R.T.: 9.692 min
 Delta R.T.: -0.006 min
 Response: 8200811858
 Conc: 444.95 ng/ml



#12 2,4,5-T

R.T.: 10.365 min
 Delta R.T.: -0.003 min
 Response: 5776566452
 Conc: 442.41 ng/ml



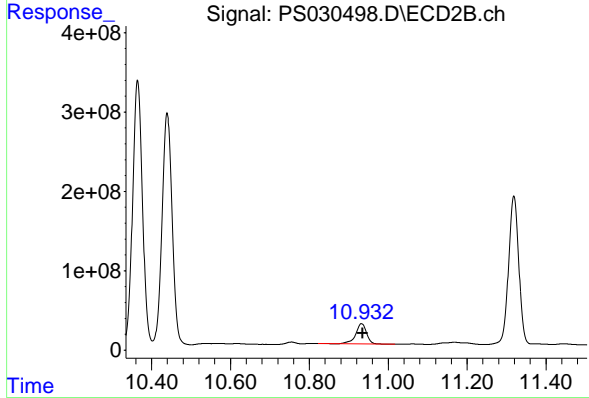
#13 2,4-DB

R.T.: 10.273 min
 Delta R.T.: -0.004 min
 Response: 1378906806
 Conc: 454.13 ng/ml

Instrument : ECD_S
 ClientSampleId : OR-400-CF-402B-COMP-23MS

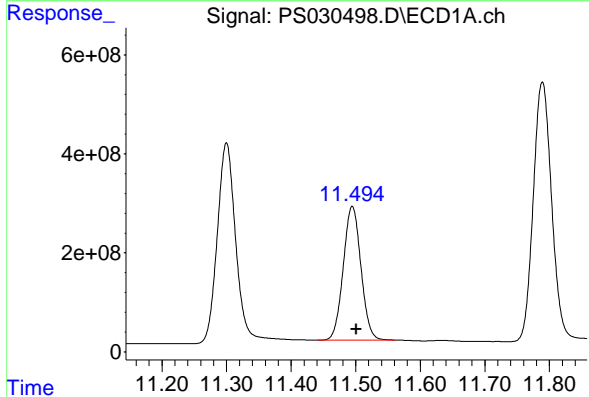
Manual Integrations
 APPROVED

Reviewed By :Abdul Mirza 06/05/2025
 Supervised By :mohammad ahmed 06/06/2025



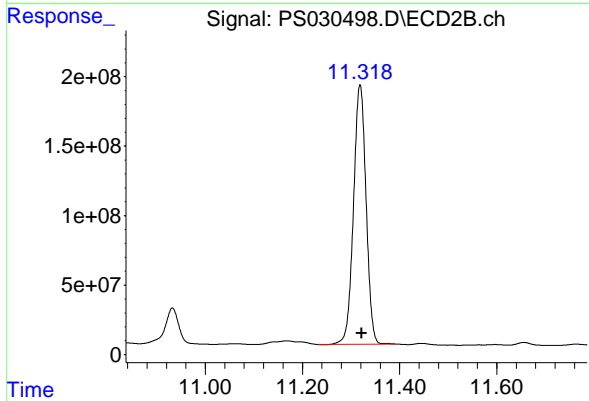
#13 2,4-DB

R.T.: 10.932 min
 Delta R.T.: -0.003 min
 Response: 484984235
 Conc: 421.89 ng/ml



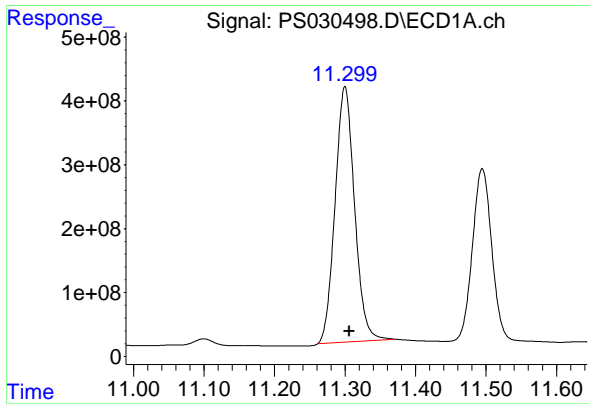
#14 DINOSEB

R.T.: 11.495 min
 Delta R.T.: -0.007 min
 Response: 5139580032
 Conc: 357.54 ng/ml



#14 DINOSEB

R.T.: 11.319 min
 Delta R.T.: -0.003 min
 Response: 3354633662
 Conc: 333.79 ng/ml



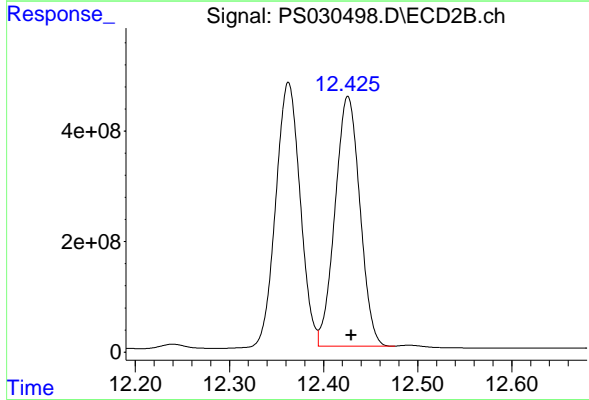
#15 Picloram

R.T.: 11.300 min
 Delta R.T.: -0.006 min
 Response: 7692993416
 Conc: 384.56 ng/ml

Instrument : ECD_S
 Client Sample Id : OR-400-CF-402B-COMP-23MS

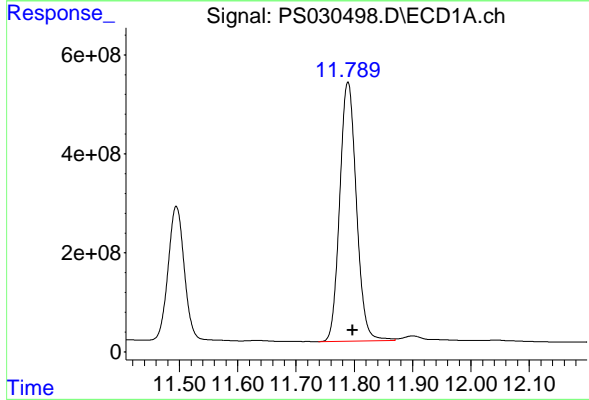
Manual Integrations
 APPROVED

Reviewed By :Abdul Mirza 06/05/2025
 Supervised By :mohammad ahmed 06/06/2025



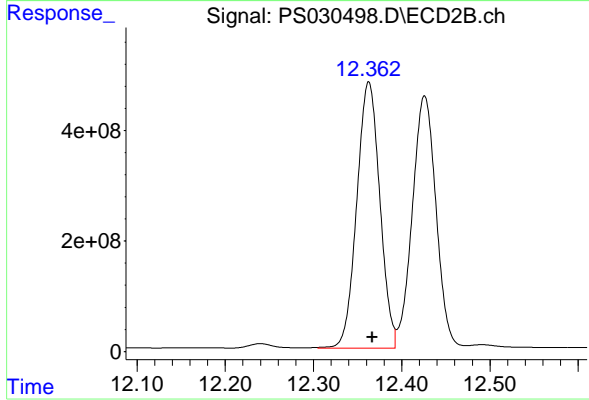
#15 Picloram

R.T.: 12.426 min
 Delta R.T.: -0.004 min
 Response: 8293316119
 Conc: 375.54 ng/ml



#16 DCPA

R.T.: 11.789 min
 Delta R.T.: -0.008 min
 Response: 10393966504
 Conc: 393.11 ng/ml



#16 DCPA

R.T.: 12.362 min
 Delta R.T.: -0.004 min
 Response: 8718672681
 Conc: 426.07 ng/ml m