

Data Path : Z:\pestpcbsrv\HPCHEM1\ECD_L\Data\PL060425\
 Data File : PL095917.D
 Signal(s) : Signal #1: ECD1A.ch Signal #2: ECD2B.ch
 Acq On : 04 Jun 2025 12:07
 Operator : AR\AJ
 Sample : PB168264BS
 Misc :
 ALS Vial : 5 Sample Multiplier: 1

Instrument :
 ECD_L
ClientSampleId :
 PB168264BS

Manual Integrations
APPROVED
 Reviewed By :Abdul Mirza 06/05/2025
 Supervised By :mohammad ahmed 06/06/2025

Integration File signal 1: autoint1.e
 Integration File signal 2: autoint2.e
 Quant Time: Jun 05 01:41:43 2025
 Quant Method : Z:\pestpcbsrv\HPCHEM1\ECD_L\methods\PL052125.M
 Quant Title : GC Extractables
 QLast Update : Thu May 22 06:29:30 2025
 Response via : Initial Calibration
 Integrator: ChemStation

Volume Inj. : 1 µl
 Signal #1 Phase : ZB-MR2 Signal #2 Phase: ZB-MR2
 Signal #1 Info : 30M x 0.32mm x0.5 Signal #2 Info : 30M x 0.32mm x0.25µm

Compound	RT#1	RT#2	Resp#1	Resp#2	ng/ml	ng/ml

System Monitoring Compounds						
1) SA Tetrachlo...	3.577	2.882	69630438	83635216	22.068	21.369
28) SA Decachlor...	9.106	8.058	51809620	96608301	21.987	22.085
Target Compounds						
2) A alpha-BHC	4.029	3.392	273.0E6	326.3E6	56.315	55.700
3) MA gamma-BHC...	4.361	3.726	249.6E6	308.9E6	55.813	55.147
4) MA Heptachlor	4.959	4.078	206.2E6	300.6E6	54.472	53.593
5) MB Aldrin	5.301	4.363	239.4E6	293.9E6	55.958	55.374
6) B beta-BHC	4.549	4.021	107.0E6	132.0E6	54.280	53.298
7) B delta-BHC	4.797	4.257	244.1E6	309.3E6	55.054	54.769
8) B Heptachlo...	5.722	4.865	210.9E6	272.3E6	55.250	55.151
9) A Endosulfan I	6.105	5.238	199.6E6	265.3E6	54.471	55.668
10) B gamma-Chl...	5.976	5.118	214.1E6	293.0E6	55.000	55.786
11) B alpha-Chl...	6.057	5.182	214.2E6	288.2E6	54.243	55.401
12) B 4,4'-DDE	6.228	5.369	200.4E6	288.3E6	54.647	53.768
13) MA Dieldrin	6.378	5.503	214.7E6	288.5E6	55.642	54.437
14) MA Endrin	6.606	5.776	157.7E6	238.8E6	48.874	48.975m
15) B Endosulfa...	6.818	6.068	177.1E6	261.4E6	51.404	55.010
16) A 4,4'-DDD	6.738	5.922	165.3E6	253.0E6	56.401	57.689
17) MA 4,4'-DDT	7.053	6.175	133.2E6	226.7E6	49.246	47.398
18) B Endrin al...	6.947	6.246	132.7E6	195.0E6	54.897	56.449
19) B Endosulfa...	7.181	6.470	160.6E6	245.0E6	53.776	54.502
20) A Methoxychlor	7.526	6.745	62825073	117.4E6	49.262	44.888
21) B Endrin ke...	7.662	6.975	178.9E6	293.6E6	56.493	56.752
22) Mirex	8.143	7.169	124.6E6	216.7E6	53.840	53.374

(f)=RT Delta > 1/2 Window (#)=Amounts differ by > 25% (m)=manual int.

Data Path : Z:\pestpcbsrv\HPCHEM1\ECD_L\Data\PL060425\
 Data File : PL095917.D
 Signal(s) : Signal #1: ECD1A.ch Signal #2: ECD2B.ch
 Acq On : 04 Jun 2025 12:07
 Operator : AR\AJ
 Sample : PB168264BS
 Misc :
 ALS Vial : 5 Sample Multiplier: 1

Instrument :

ECD_L

ClientSampleId :

PB168264BS

Manual Integrations

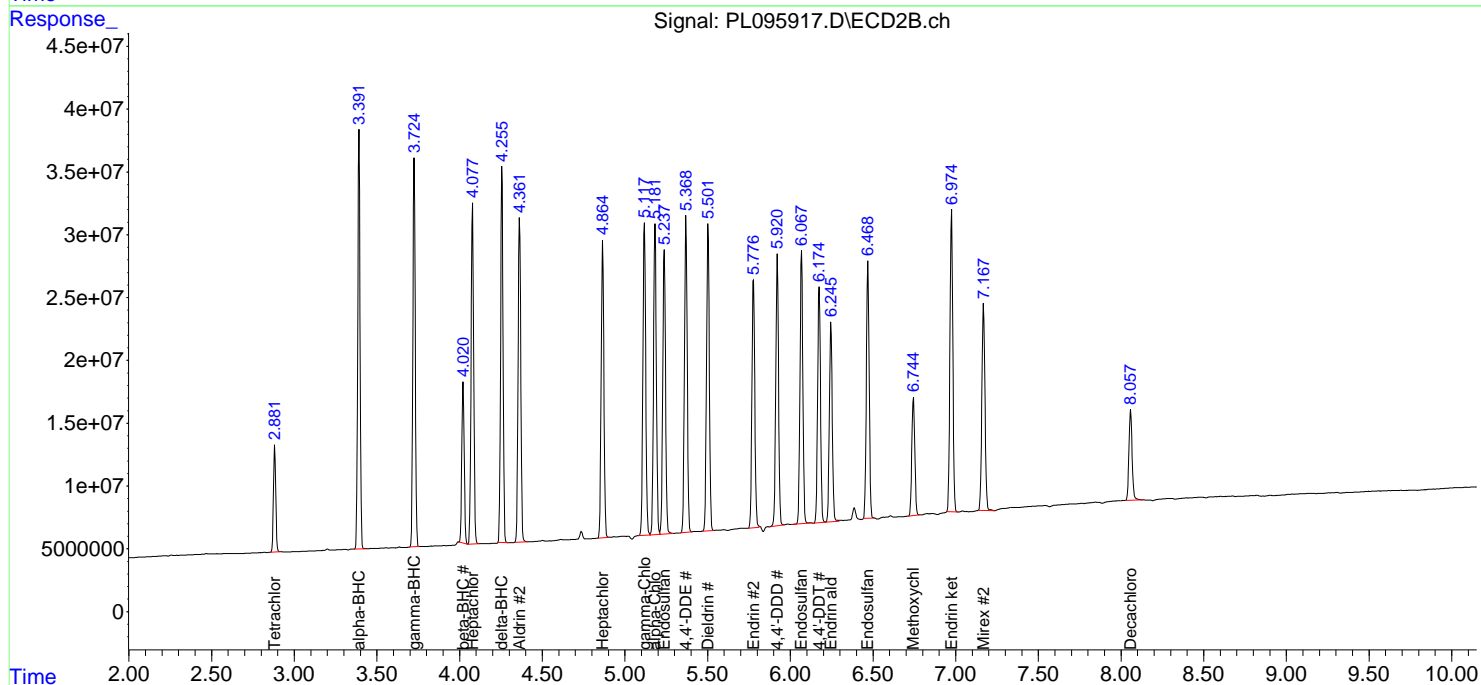
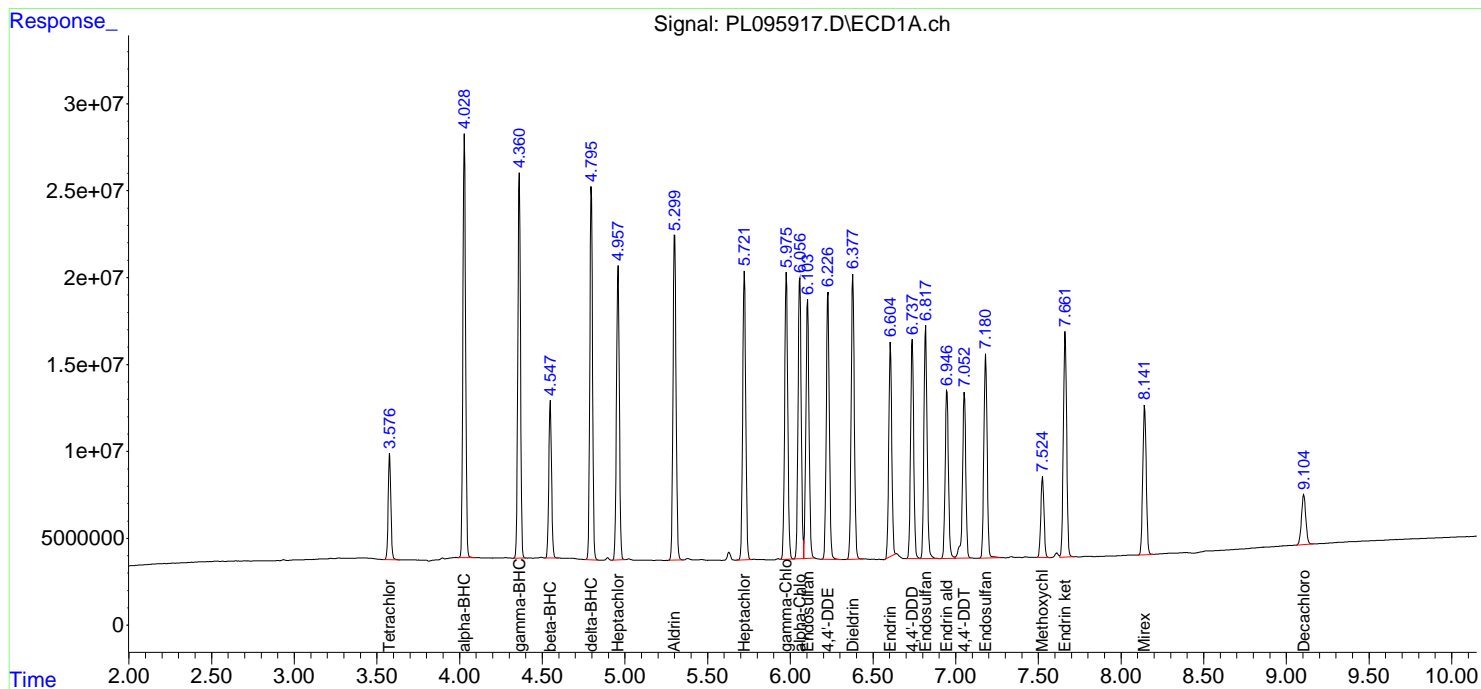
APPROVED

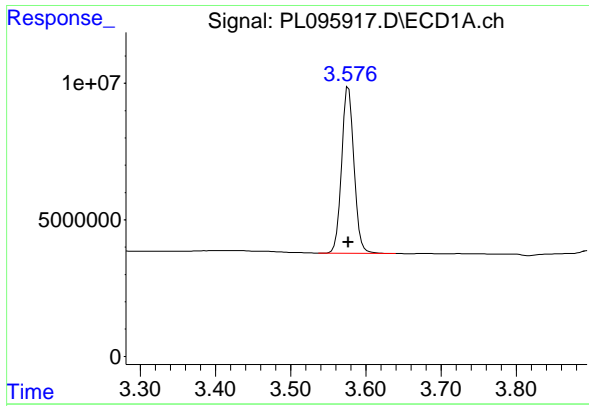
Reviewed By :Abdul Mirza 06/05/2025

Supervised By :mohammad ahmed 06/06/2025

Integration File signal 1: autoint1.e
 Integration File signal 2: autoint2.e
 Quant Time: Jun 05 01:41:43 2025
 Quant Method : Z:\pestpcbsrv\HPCHEM1\ECD_L\methods\PL052125.M
 Quant Title : GC Extractables
 QLast Update : Thu May 22 06:29:30 2025
 Response via : Initial Calibration
 Integrator: ChemStation

Volume Inj. : 1 µl
 Signal #1 Phase : ZB-MR1 Signal #2 Phase: ZB-MR2
 Signal #1 Info : 30M x 0.32mm x0.5 Signal #2 Info : 30M x 0.32mm x0.25µm





#1 Tetrachloro-m-xylene

R.T.: 3.577 min
 Delta R.T.: 0.000 min
 Response: 69630438
 Conc: 22.07 ng/ml

Instrument :

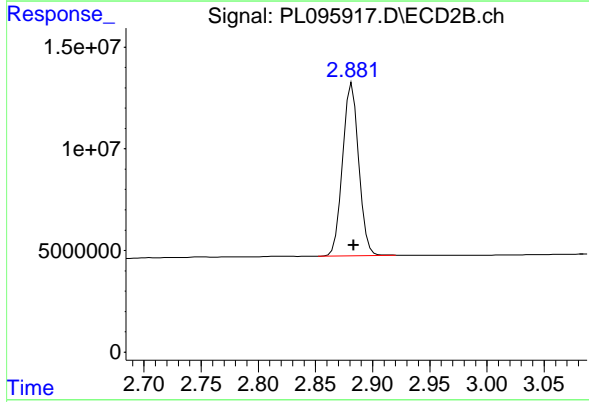
ECD_L

ClientSampleId :

PB168264BS

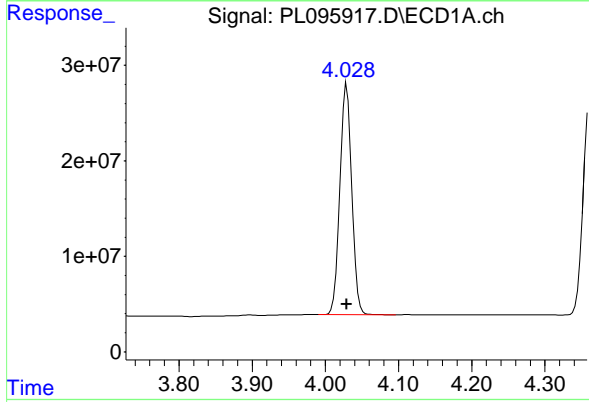
Manual Integrations
 APPROVED

Reviewed By :Abdul Mirza 06/05/2025
 Supervised By :mohammad ahmed 06/06/2025



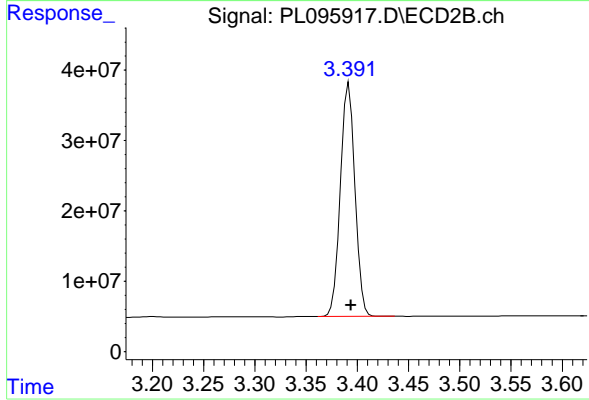
#1 Tetrachloro-m-xylene

R.T.: 2.882 min
 Delta R.T.: -0.001 min
 Response: 83635216
 Conc: 21.37 ng/ml



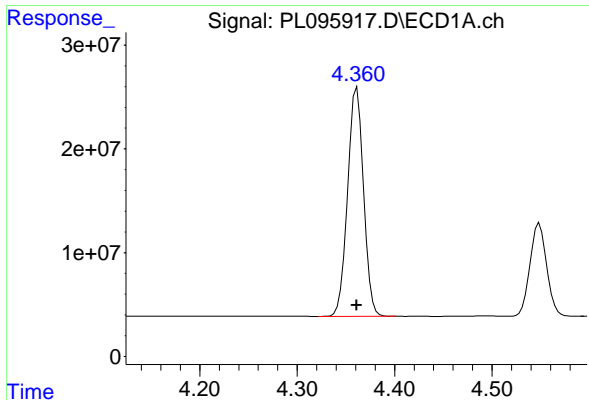
#2 alpha-BHC

R.T.: 4.029 min
 Delta R.T.: 0.000 min
 Response: 273011049
 Conc: 56.31 ng/ml



#2 alpha-BHC

R.T.: 3.392 min
 Delta R.T.: -0.002 min
 Response: 326253229
 Conc: 55.70 ng/ml



#3 gamma-BHC (Lindane)

R.T.: 4.361 min
 Delta R.T.: 0.000 min
 Response: 249588563
 Conc: 55.81 ng/ml

Instrument :

ECD_L

ClientSampleId :

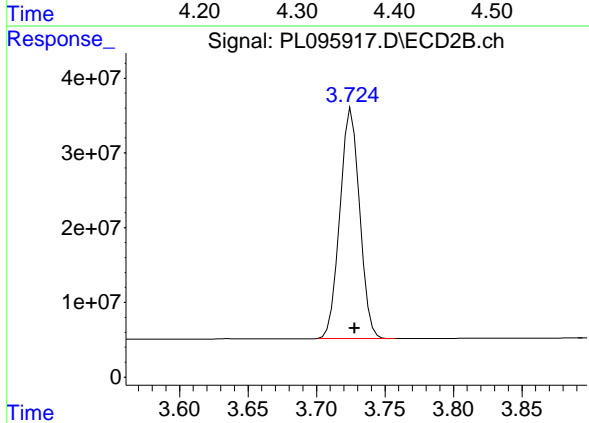
PB168264BS

Manual Integrations

APPROVED

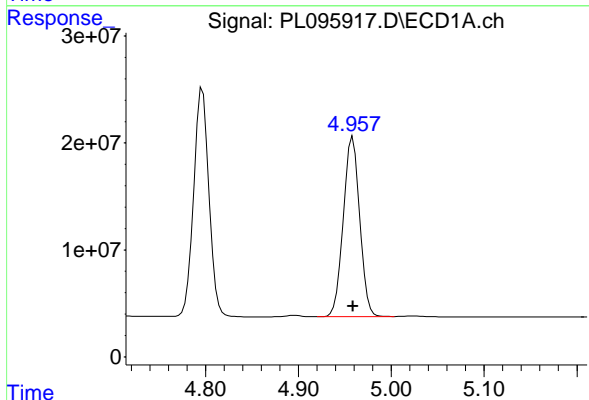
Reviewed By :Abdul Mirza 06/05/2025

Supervised By :mohammad ahmed 06/06/2025



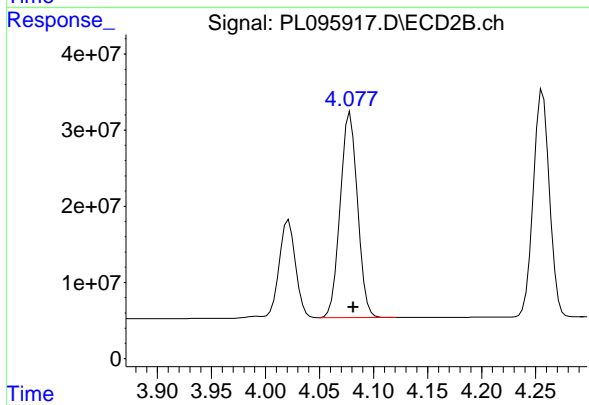
#3 gamma-BHC (Lindane)

R.T.: 3.726 min
 Delta R.T.: -0.002 min
 Response: 308891057
 Conc: 55.15 ng/ml



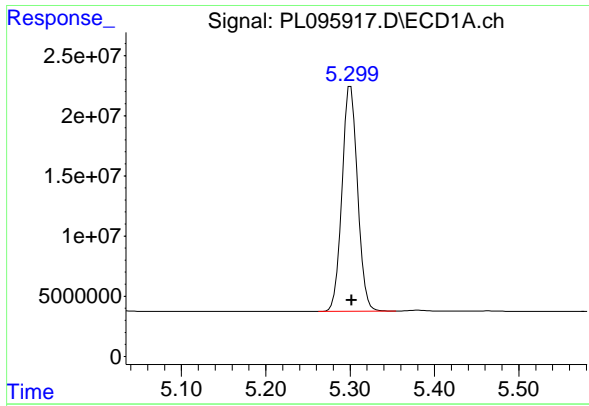
#4 Heptachlor

R.T.: 4.959 min
 Delta R.T.: 0.000 min
 Response: 206179480
 Conc: 54.47 ng/ml



#4 Heptachlor

R.T.: 4.078 min
 Delta R.T.: -0.003 min
 Response: 300605750
 Conc: 53.59 ng/ml



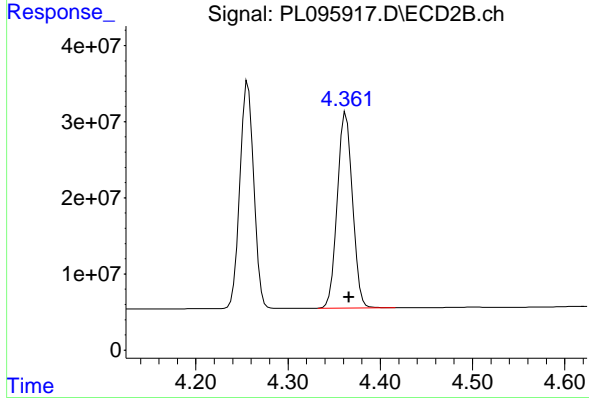
#5 Aldrin

R.T.: 5.301 min
 Delta R.T.: -0.001 min
 Response: 239373190
 Conc: 55.96 ng/ml

Instrument : ECD_L
 ClientSampleId : PB168264BS

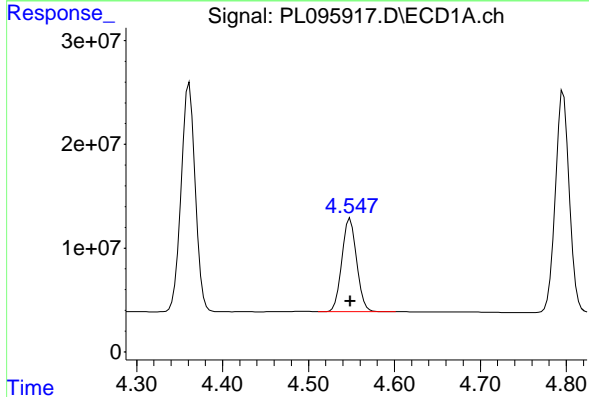
Manual Integrations
 APPROVED

Reviewed By :Abdul Mirza 06/05/2025
 Supervised By :mohammad ahmed 06/06/2025



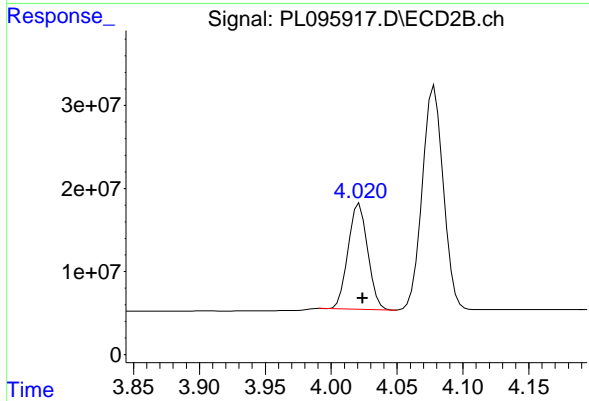
#5 Aldrin

R.T.: 4.363 min
 Delta R.T.: -0.003 min
 Response: 293876795
 Conc: 55.37 ng/ml



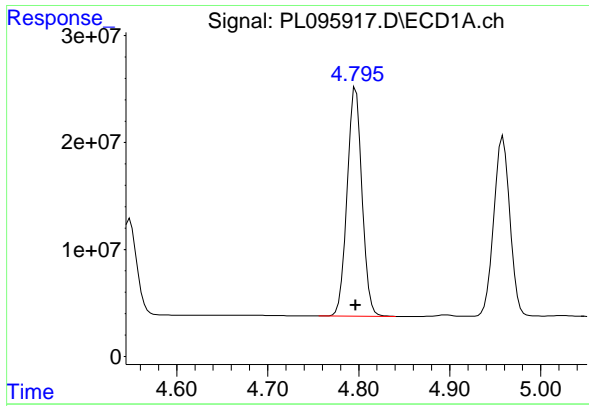
#6 beta-BHC

R.T.: 4.549 min
 Delta R.T.: 0.000 min
 Response: 107005163
 Conc: 54.28 ng/ml



#6 beta-BHC

R.T.: 4.021 min
 Delta R.T.: -0.002 min
 Response: 132047950
 Conc: 53.30 ng/ml



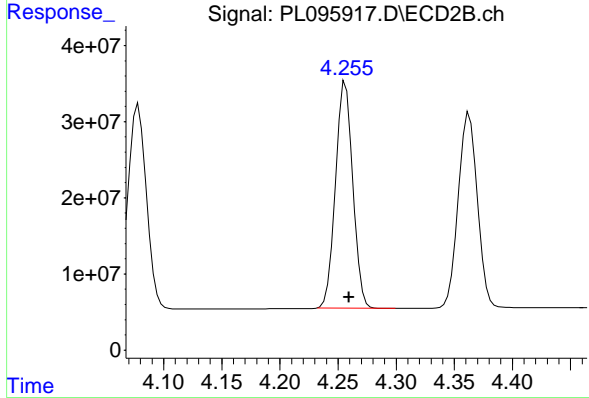
#7 delta-BHC

R.T.: 4.797 min
 Delta R.T.: 0.000 min
 Response: 244087101
 Conc: 55.05 ng/ml

Instrument : ECD_L
 ClientSampleId : PB168264BS

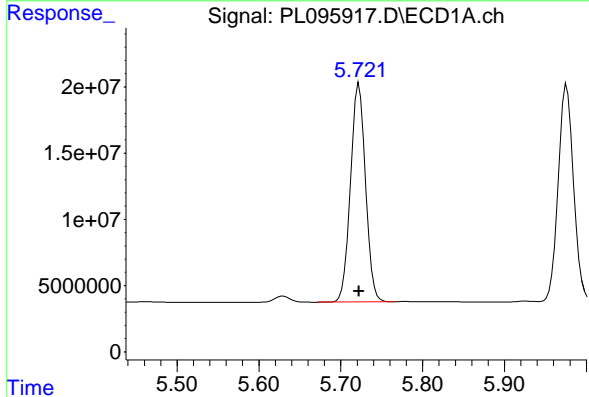
Manual Integrations
 APPROVED

Reviewed By :Abdul Mirza 06/05/2025
 Supervised By :mohammad ahmed 06/06/2025



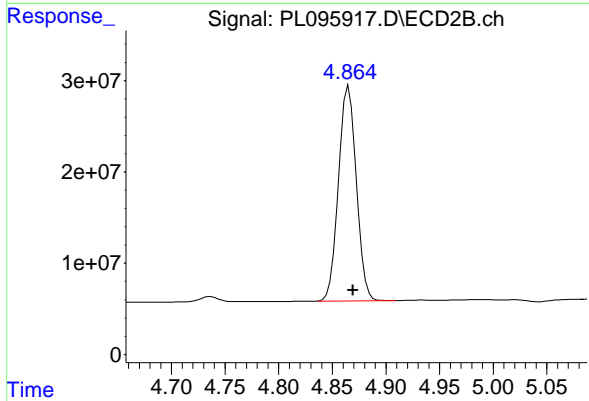
#7 delta-BHC

R.T.: 4.257 min
 Delta R.T.: -0.003 min
 Response: 309300024
 Conc: 54.77 ng/ml



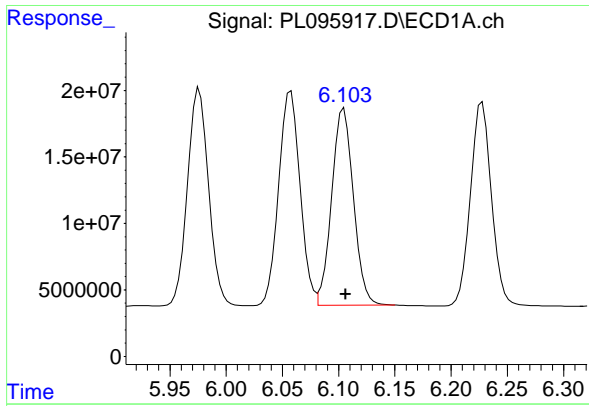
#8 Heptachlor epoxide

R.T.: 5.722 min
 Delta R.T.: 0.000 min
 Response: 210880145
 Conc: 55.25 ng/ml



#8 Heptachlor epoxide

R.T.: 4.865 min
 Delta R.T.: -0.004 min
 Response: 272302763
 Conc: 55.15 ng/ml



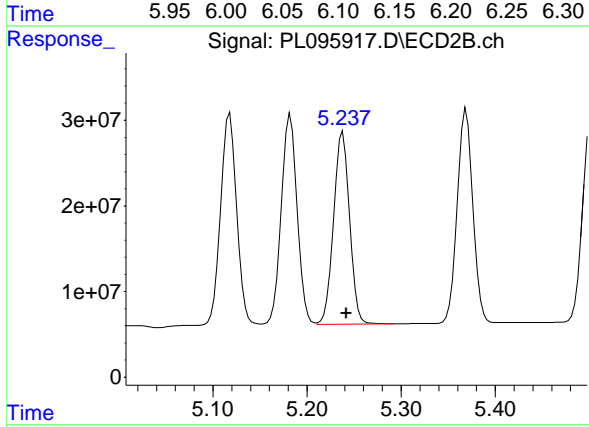
#9 Endosulfan I

R.T.: 6.105 min
 Delta R.T.: -0.001 min
 Response: 199625948
 Conc: 54.47 ng/ml

Instrument :
 ECD_L
 ClientSampleId :
 PB168264BS

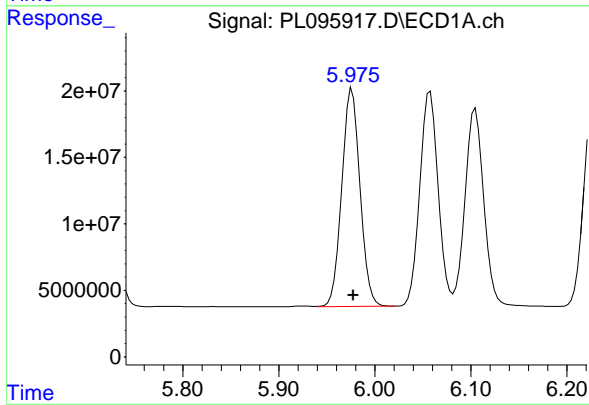
Manual Integrations
 APPROVED

Reviewed By :Abdul Mirza 06/05/2025
 Supervised By :mohammad ahmed 06/06/2025



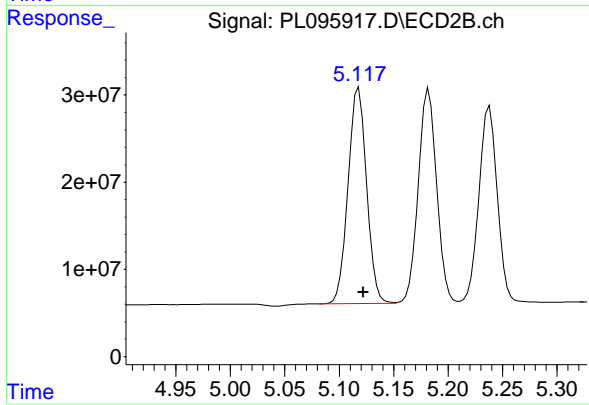
#9 Endosulfan I

R.T.: 5.238 min
 Delta R.T.: -0.004 min
 Response: 265257105
 Conc: 55.67 ng/ml



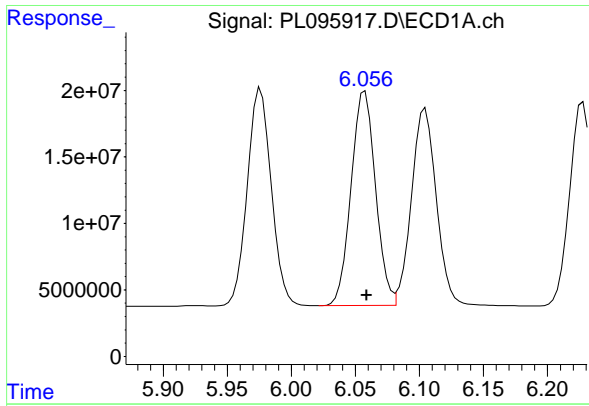
#10 gamma-Chlordane

R.T.: 5.976 min
 Delta R.T.: -0.001 min
 Response: 214065328
 Conc: 55.00 ng/ml



#10 gamma-Chlordane

R.T.: 5.118 min
 Delta R.T.: -0.004 min
 Response: 293024773
 Conc: 55.79 ng/ml



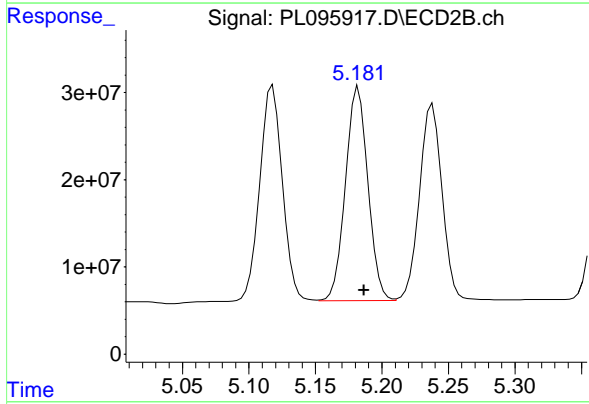
#11 alpha-Chlordane

R.T.: 6.057 min
 Delta R.T.: -0.001 min
 Response: 214161531
 Conc: 54.24 ng/ml

Instrument : ECD_L
 ClientSampleId : PB168264BS

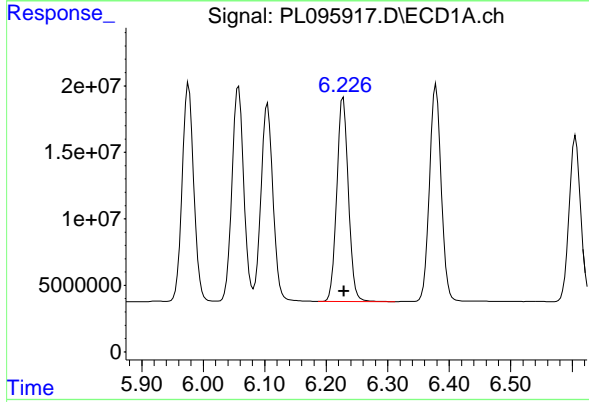
Manual Integrations
 APPROVED

Reviewed By :Abdul Mirza 06/05/2025
 Supervised By :mohammad ahmed 06/06/2025



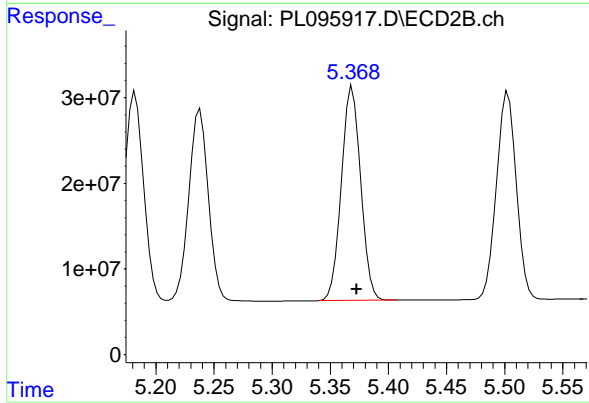
#11 alpha-Chlordane

R.T.: 5.182 min
 Delta R.T.: -0.004 min
 Response: 288238801
 Conc: 55.40 ng/ml



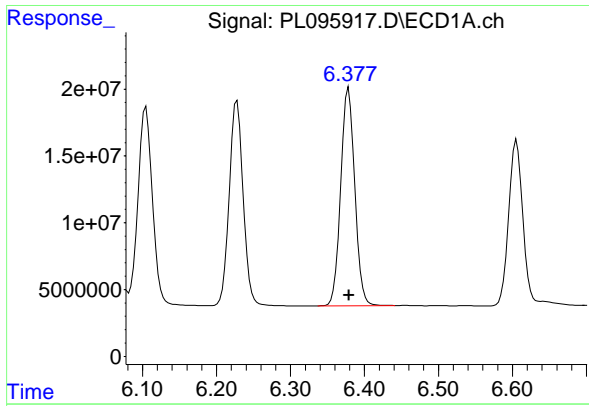
#12 4,4'-DDE

R.T.: 6.228 min
 Delta R.T.: -0.001 min
 Response: 200438557
 Conc: 54.65 ng/ml



#12 4,4'-DDE

R.T.: 5.369 min
 Delta R.T.: -0.004 min
 Response: 288314624
 Conc: 53.77 ng/ml



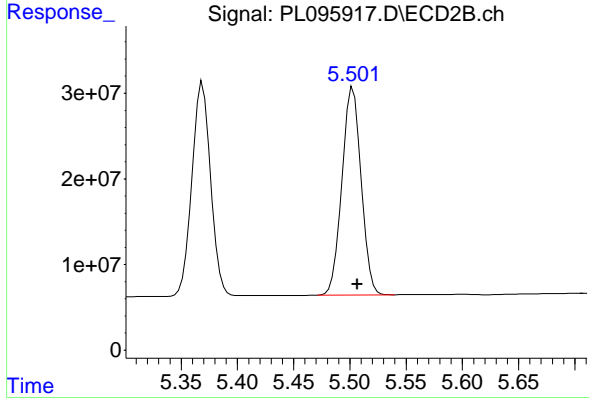
#13 Dieldrin

R.T.: 6.378 min
 Delta R.T.: -0.001 min
 Response: 214733585
 Conc: 55.64 ng/ml

Instrument : ECD_L
 Client Sample Id : PB168264BS

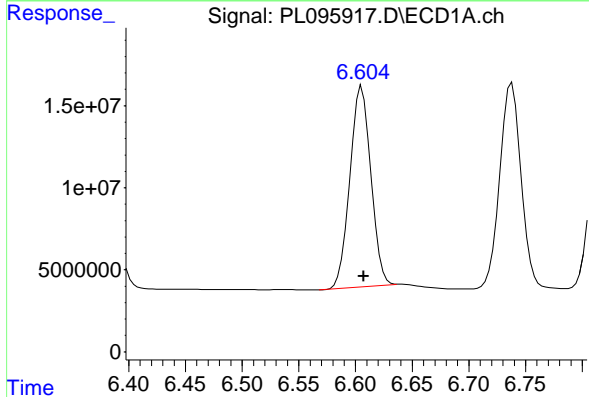
Manual Integrations
 APPROVED

Reviewed By :Abdul Mirza 06/05/2025
 Supervised By :mohammad ahmed 06/06/2025



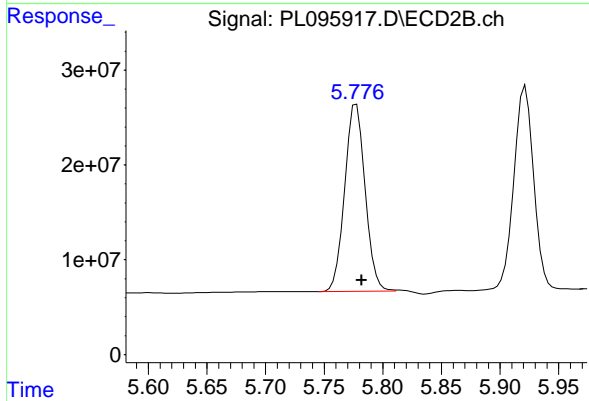
#13 Dieldrin

R.T.: 5.503 min
 Delta R.T.: -0.004 min
 Response: 288522043
 Conc: 54.44 ng/ml



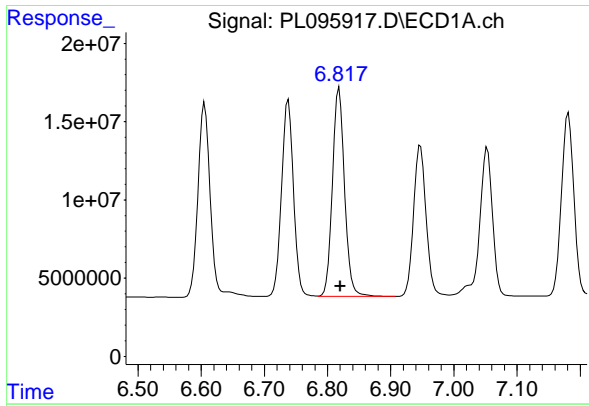
#14 Endrin

R.T.: 6.606 min
 Delta R.T.: -0.001 min
 Response: 157705049
 Conc: 48.87 ng/ml



#14 Endrin

R.T.: 5.776 min
 Delta R.T.: -0.006 min
 Response: 238808905
 Conc: 48.98 ng/ml m



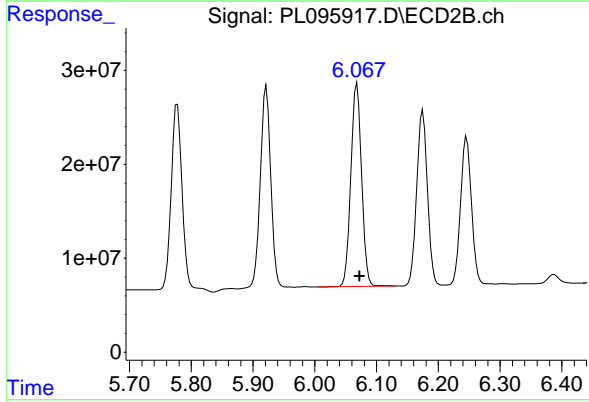
#15 Endosulfan II

R.T.: 6.818 min
 Delta R.T.: -0.002 min
 Response: 177140455
 Conc: 51.40 ng/ml

Instrument : ECD_L
 Client Sample Id : PB168264BS

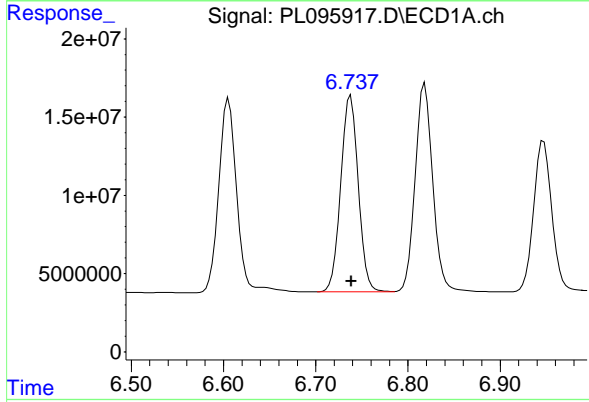
Manual Integrations
 APPROVED

Reviewed By :Abdul Mirza 06/05/2025
 Supervised By :mohammad ahmed 06/06/2025



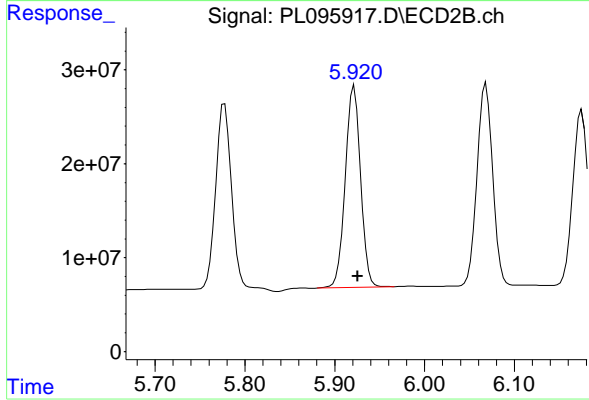
#15 Endosulfan II

R.T.: 6.068 min
 Delta R.T.: -0.004 min
 Response: 261396101
 Conc: 55.01 ng/ml



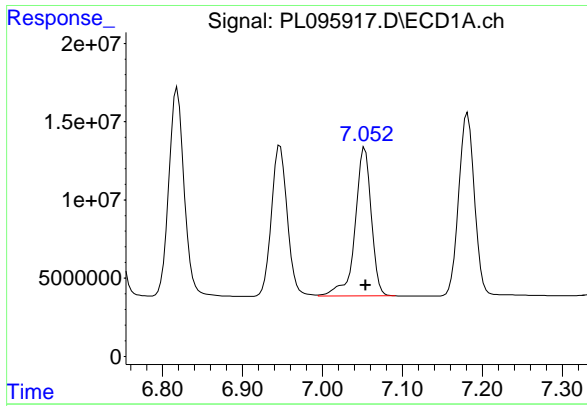
#16 4,4'-DDD

R.T.: 6.738 min
 Delta R.T.: 0.000 min
 Response: 165289424
 Conc: 56.40 ng/ml



#16 4,4'-DDD

R.T.: 5.922 min
 Delta R.T.: -0.004 min
 Response: 252960845
 Conc: 57.69 ng/ml



#17 4,4' -DDT

R.T.: 7.053 min
 Delta R.T.: -0.001 min
 Response: 133218053
 Conc: 49.25 ng/ml

Instrument :

ECD_L

ClientSampleId :

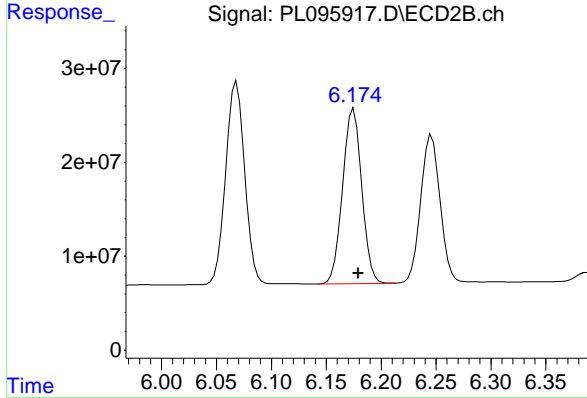
PB168264BS

Manual Integrations

APPROVED

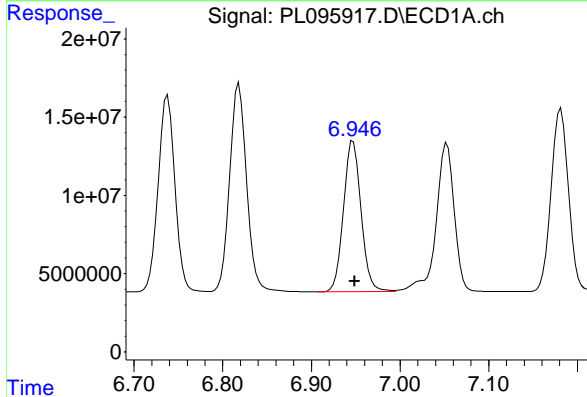
Reviewed By :Abdul Mirza 06/05/2025

Supervised By :mohammad ahmed 06/06/2025



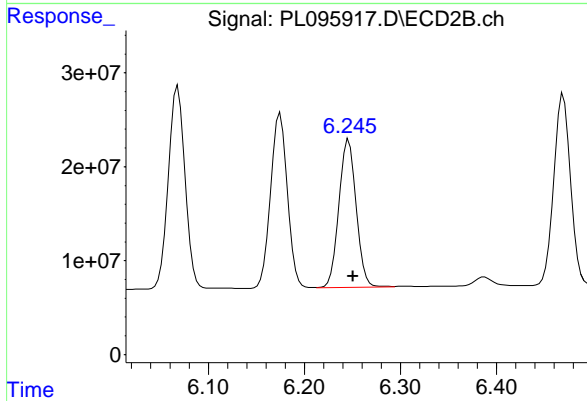
#17 4,4' -DDT

R.T.: 6.175 min
 Delta R.T.: -0.004 min
 Response: 226685252
 Conc: 47.40 ng/ml



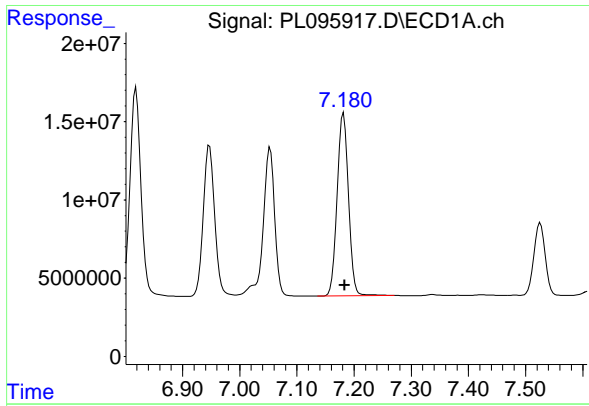
#18 Endrin aldehyde

R.T.: 6.947 min
 Delta R.T.: -0.002 min
 Response: 132720349
 Conc: 54.90 ng/ml



#18 Endrin aldehyde

R.T.: 6.246 min
 Delta R.T.: -0.005 min
 Response: 194992287
 Conc: 56.45 ng/ml



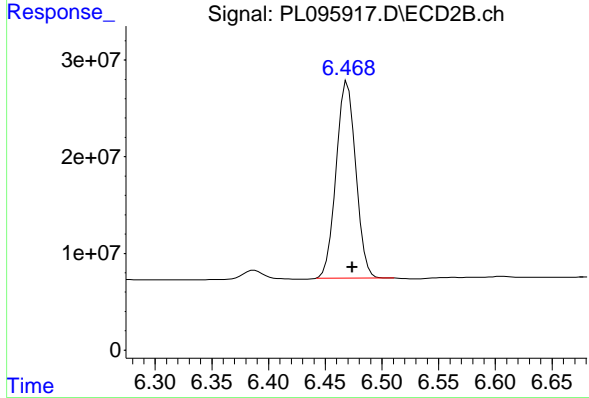
#19 Endosulfan Sulfate

R.T.: 7.181 min
 Delta R.T.: -0.002 min
 Response: 160623464
 Conc: 53.78 ng/ml

Instrument : ECD_L
 Client Sample Id : PB168264BS

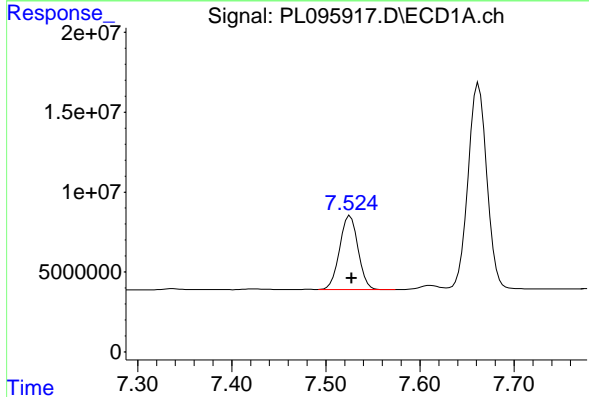
Manual Integrations
 APPROVED

Reviewed By :Abdul Mirza 06/05/2025
 Supervised By :mohammad ahmed 06/06/2025



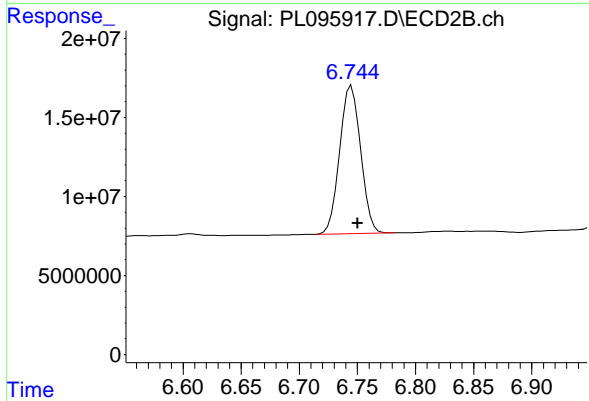
#19 Endosulfan Sulfate

R.T.: 6.470 min
 Delta R.T.: -0.004 min
 Response: 244974914
 Conc: 54.50 ng/ml



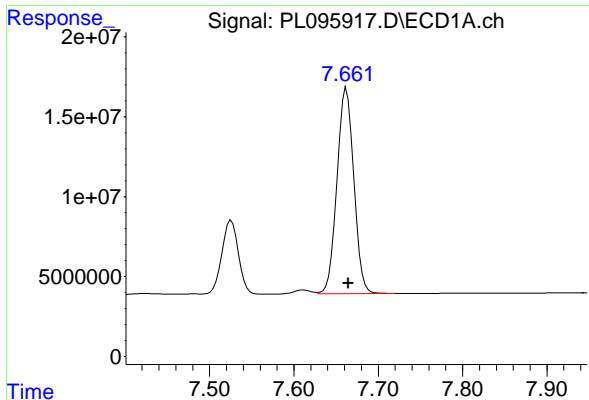
#20 Methoxychlor

R.T.: 7.526 min
 Delta R.T.: -0.002 min
 Response: 62825073
 Conc: 49.26 ng/ml



#20 Methoxychlor

R.T.: 6.745 min
 Delta R.T.: -0.005 min
 Response: 117431678
 Conc: 44.89 ng/ml



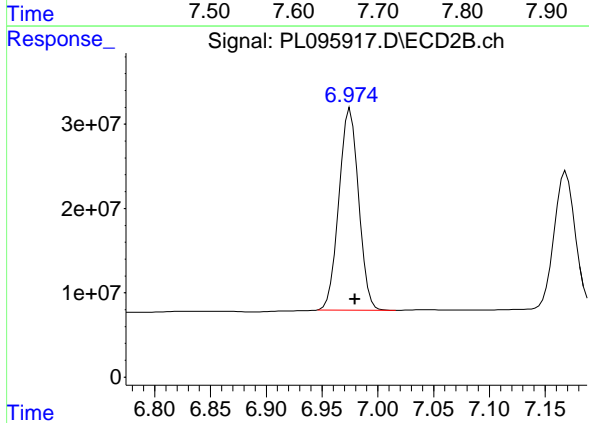
#21 Endrin ketone

R.T.: 7.662 min
 Delta R.T.: -0.002 min
 Response: 178908212
 Conc: 56.49 ng/ml

Instrument : ECD_L
 ClientSampleId : PB168264BS

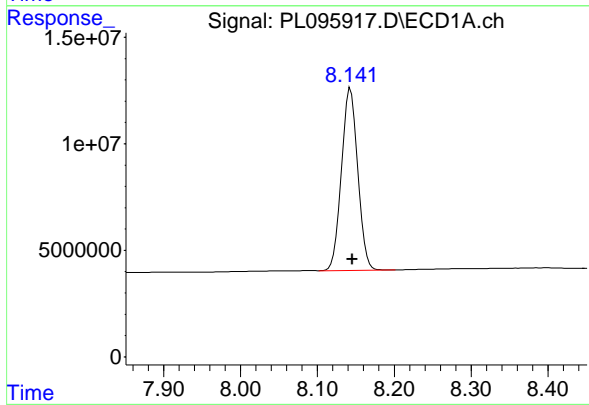
Manual Integrations
 APPROVED

Reviewed By :Abdul Mirza 06/05/2025
 Supervised By :mohammad ahmed 06/06/2025



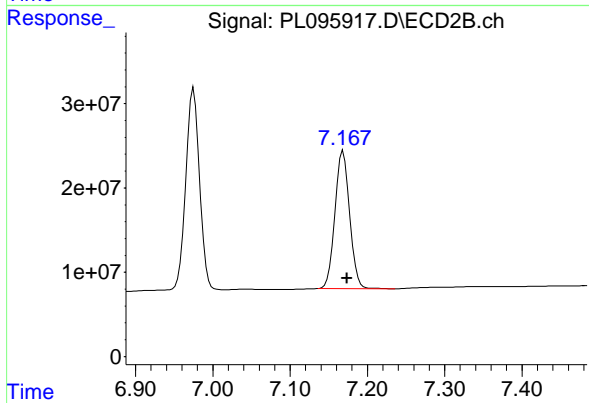
#21 Endrin ketone

R.T.: 6.975 min
 Delta R.T.: -0.004 min
 Response: 293629549
 Conc: 56.75 ng/ml



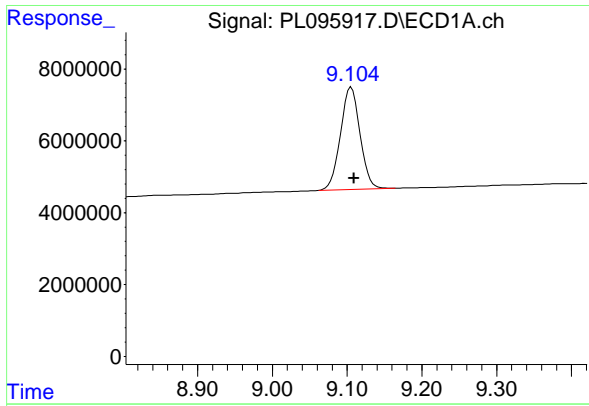
#22 Mirex

R.T.: 8.143 min
 Delta R.T.: -0.002 min
 Response: 124573889
 Conc: 53.84 ng/ml



#22 Mirex

R.T.: 7.169 min
 Delta R.T.: -0.005 min
 Response: 216724669
 Conc: 53.37 ng/ml



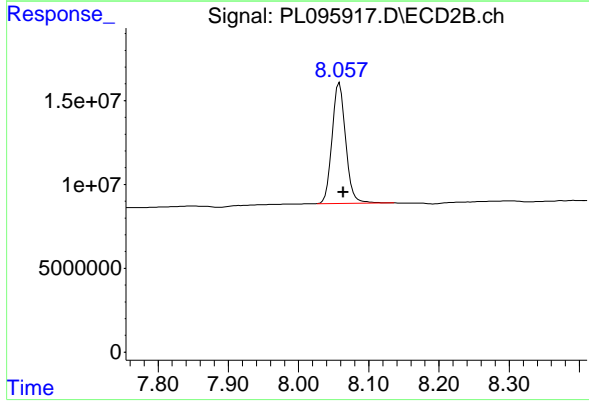
#28 Decachlorobiphenyl

R.T.: 9.106 min
 Delta R.T.: -0.003 min
 Response: 51809620
 Conc: 21.99 ng/ml

Instrument :
 ECD_L
 ClientSampleId :
 PB168264BS

Manual Integrations
 APPROVED

Reviewed By :Abdul Mirza 06/05/2025
 Supervised By :mohammad ahmed 06/06/2025



#28 Decachlorobiphenyl

R.T.: 8.058 min
 Delta R.T.: -0.005 min
 Response: 96608301
 Conc: 22.08 ng/ml