

Data Path : Z:\pestpcbsrv\HPCHEM1\ECD_L\Data\PL060325\
 Data File : PL095902.D
 Signal(s) : Signal #1: ECD1A.ch Signal #2: ECD2B.ch
 Acq On : 03 Jun 2025 18:10
 Operator : AR\AJ
 Sample : PB168264BL
 Misc :
 ALS Vial : 24 Sample Multiplier: 1

Instrument :
 ECD_L
 ClientSampleId :
 PB168264BL

Integration File signal 1: autoint1.e
 Integration File signal 2: autoint2.e
 Quant Time: Jun 04 03:39:53 2025
 Quant Method : Z:\pestpcbsrv\HPCHEM1\ECD_L\methods\PL052125.M
 Quant Title : GC Extractables
 QLast Update : Thu May 22 06:29:30 2025
 Response via : Initial Calibration
 Integrator: ChemStation

Volume Inj. : 1 µl
 Signal #1 Phase : ZB-MR1 Signal #2 Phase: ZB-MR2
 Signal #1 Info : 30M x 0.32mm x0.5 Signal #2 Info : 30M x 0.32mm x0.25µm

Compound	RT#1	RT#2	Resp#1	Resp#2	ng/ml	ng/ml

System Monitoring Compounds						
1) SA Tetrachlo...	3.572	2.885	59824314	75028691	18.960	19.170
28) SA Decachlor...	9.098	8.059	42546526	78198340	18.056	17.876

Target Compounds

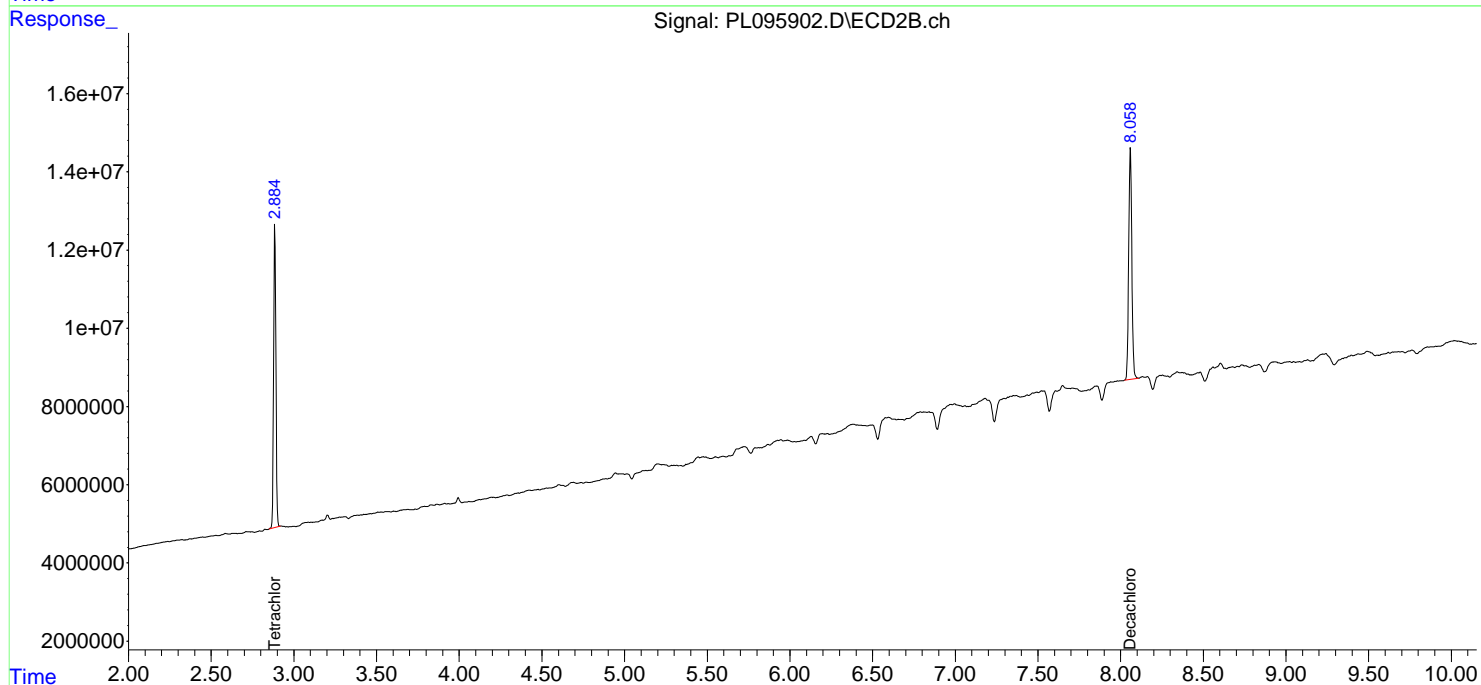
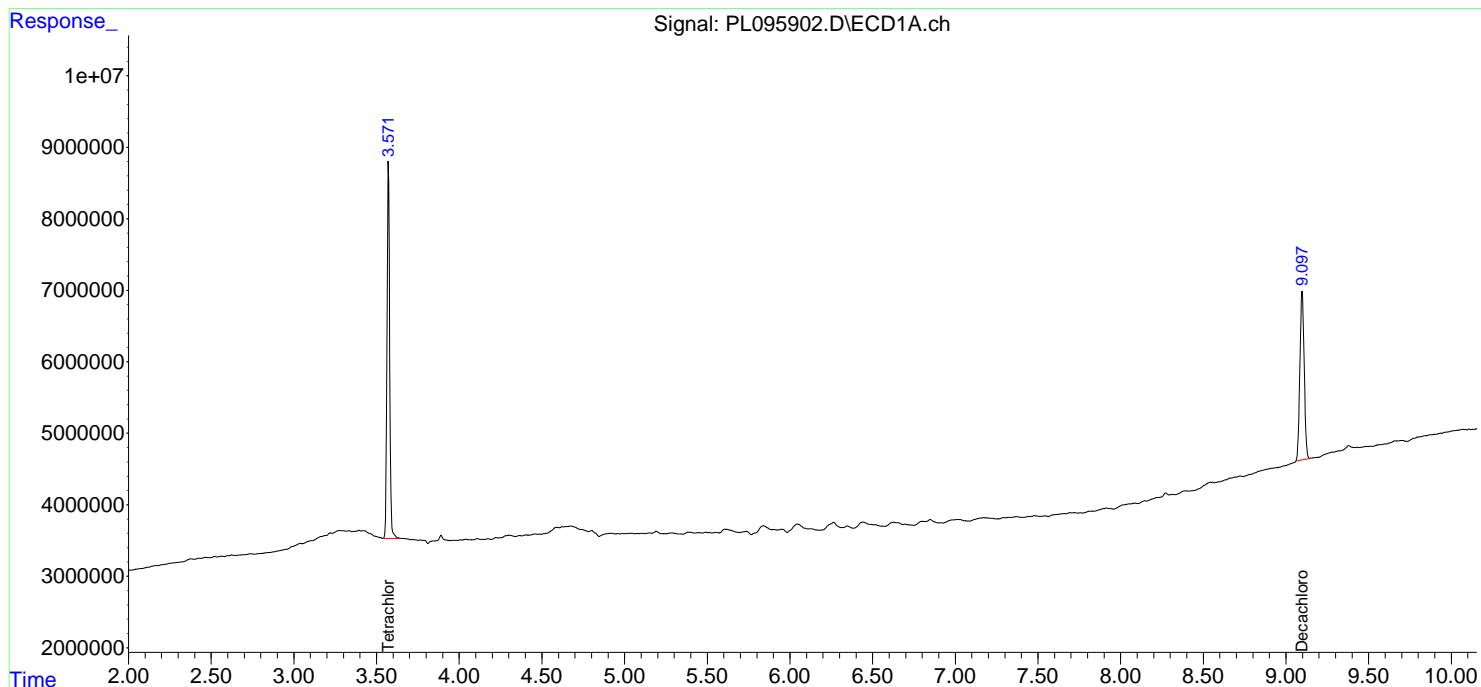
(f)=RT Delta > 1/2 Window (#)=Amounts differ by > 25% (m)=manual int.

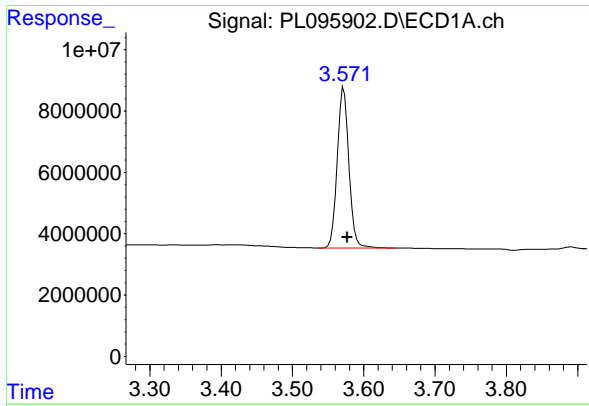
Data Path : Z:\pestpcbsrv\HPCHEM1\ECD_L\Data\PL060325\
 Data File : PL095902.D
 Signal(s) : Signal #1: ECD1A.ch Signal #2: ECD2B.ch
 Acq On : 03 Jun 2025 18:10
 Operator : AR\AJ
 Sample : PB168264BL
 Misc :
 ALS Vial : 24 Sample Multiplier: 1

Instrument :
 ECD_L
 ClientSampleId :
 PB168264BL

Integration File signal 1: autoint1.e
 Integration File signal 2: autoint2.e
 Quant Time: Jun 04 03:39:53 2025
 Quant Method : Z:\pestpcbsrv\HPCHEM1\ECD_L\methods\PL052125.M
 Quant Title : GC Extractables
 QLast Update : Thu May 22 06:29:30 2025
 Response via : Initial Calibration
 Integrator: ChemStation

Volume Inj. : 1 µl
 Signal #1 Phase : ZB-MR1 Signal #2 Phase: ZB-MR2
 Signal #1 Info : 30M x 0.32mm x0.5 Signal #2 Info : 30M x 0.32mm x0.25µm

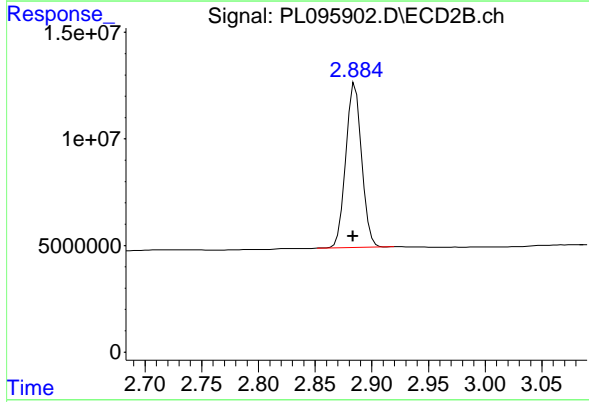




#1 Tetrachloro-m-xylene

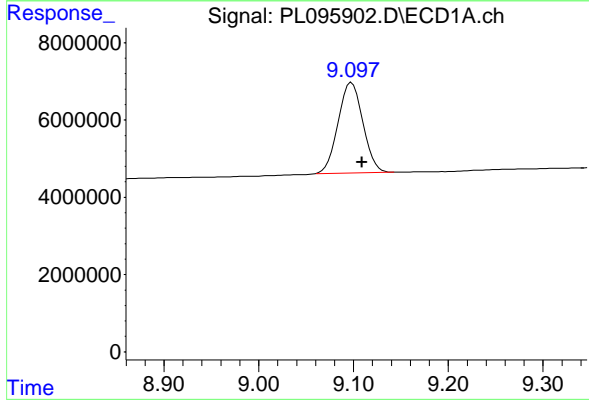
R.T.: 3.572 min
 Delta R.T.: -0.005 min
 Response: 59824314
 Conc: 18.96 ng/ml

Instrument :
 ECD_L
 ClientSampleId :
 PB168264BL



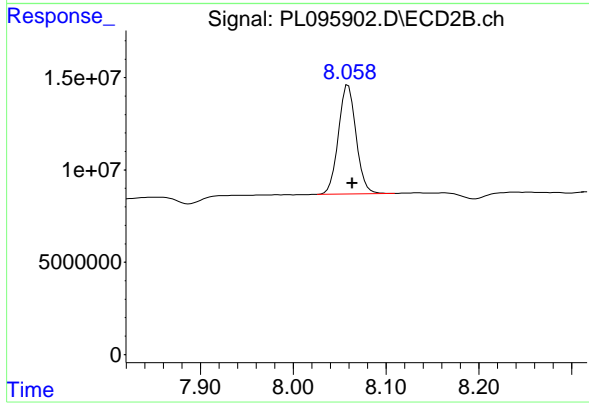
#1 Tetrachloro-m-xylene

R.T.: 2.885 min
 Delta R.T.: 0.002 min
 Response: 75028691
 Conc: 19.17 ng/ml



#28 Decachlorobiphenyl

R.T.: 9.098 min
 Delta R.T.: -0.011 min
 Response: 42546526
 Conc: 18.06 ng/ml



#28 Decachlorobiphenyl

R.T.: 8.059 min
 Delta R.T.: -0.004 min
 Response: 78198340
 Conc: 17.88 ng/ml