

Data Path : Z:\pestpcbsrv\HPCHEM1\ECD_L\Data\PL060325\
 Data File : PL095898.D
 Signal(s) : Signal #1: ECD1A.ch Signal #2: ECD2B.ch
 Acq On : 03 Jun 2025 17:15
 Operator : AR\AJ
 Sample : Q2173-06MS
 Misc :
 ALS Vial : 20 Sample Multiplier: 1

Instrument :
 ECD_L
ClientSampleId :
 OR-400-CF-402B-COMP-23MS

Manual Integrations
APPROVED
 Reviewed By :Abdul Mirza 06/04/2025
 Supervised By :mohammad ahmed 06/05/2025

Integration File signal 1: autoint1.e
 Integration File signal 2: autoint2.e
 Quant Time: Jun 04 03:39:15 2025
 Quant Method : Z:\pestpcbsrv\HPCHEM1\ECD_L\methods\PL052125.M
 Quant Title : GC Extractables
 QLast Update : Thu May 22 06:29:30 2025
 Response via : Initial Calibration
 Integrator: ChemStation

Volume Inj. : 1 µl
 Signal #1 Phase : ZB-MR2 Signal #2 Phase: ZB-MR2
 Signal #1 Info : 30M x 0.32mm x0.5 Signal #2 Info : 30M x 0.32mm x0.25µm

Compound	RT#1	RT#2	Resp#1	Resp#2	ng/ml	ng/ml

System Monitoring Compounds						
1) SA Tetrachlo...	3.572	2.886	58509111	73778723	18.543	18.850
28) SA Decachlor...	9.099	8.060	41292066	71495810	17.524	16.344
Target Compounds						
2) A alpha-BHC	4.024	3.396	243.9E6	308.6E6	50.303	52.687
3) MA gamma-BHC...	4.355	3.729	222.5E6	285.5E6	49.756	50.963
4) MA Heptachlor	4.953	4.081	181.4E6	272.6E6	47.929	48.594
5) MB Aldrin	5.295	4.366	191.3E6	251.3E6	44.716	47.346
6) B beta-BHC	4.543	4.023	96082723	127.2E6	48.739	51.329m
7) B delta-BHC	4.791	4.260	221.7E6	286.9E6	50.004	50.796
8) B Heptachlo...	5.716	4.868	182.1E6	247.8E6	47.710	50.179
9) A Endosulfan I	6.099	5.240	172.1E6	233.7E6	46.967	49.045
10) B gamma-Chl...	5.970	5.120	183.6E6	258.7E6	47.162	49.248
11) B alpha-Chl...	6.052	5.185	182.5E6	254.1E6	46.213	48.843
12) B 4,4'-DDE	6.221	5.371	169.6E6	252.1E6	46.235	47.006
13) MA Dieldrin	6.373	5.505	183.9E6	252.0E6	47.644	47.549
14) MA Endrin	6.600	5.779	144.6E6	217.5E6	44.823	44.602
15) B Endosulfa...	6.812	6.070	154.6E6	229.1E6	44.856	48.223
16) A 4,4'-DDD	6.732	5.923	136.1E6	213.8E6	46.448	48.753
17) MA 4,4'-DDT	7.047	6.176	124.1E6	207.1E6	45.863	43.298
18) B Endrin al...	6.941	6.248	116.5E6	167.1E6	48.203	48.368
19) B Endosulfa...	7.176	6.471	138.6E6	207.5E6	46.419	46.163
20) A Methoxychlor	7.520	6.747	57735485	108.9E6	45.271	41.623
21) B Endrin ke...	7.657	6.977	152.1E6	234.9E6	48.018	45.397
22) Mirex	8.138	7.170	106.6E6	176.4E6	46.063	43.452

(f)=RT Delta > 1/2 Window (#)=Amounts differ by > 25% (m)=manual int.

Data Path : Z:\pestpcbsrv\HPCHEM1\ECD_L\Data\PL060325\
 Data File : PL095898.D
 Signal(s) : Signal #1: ECD1A.ch Signal #2: ECD2B.ch
 Acq On : 03 Jun 2025 17:15
 Operator : AR\AJ
 Sample : Q2173-06MS
 Misc :
 ALS Vial : 20 Sample Multiplier: 1

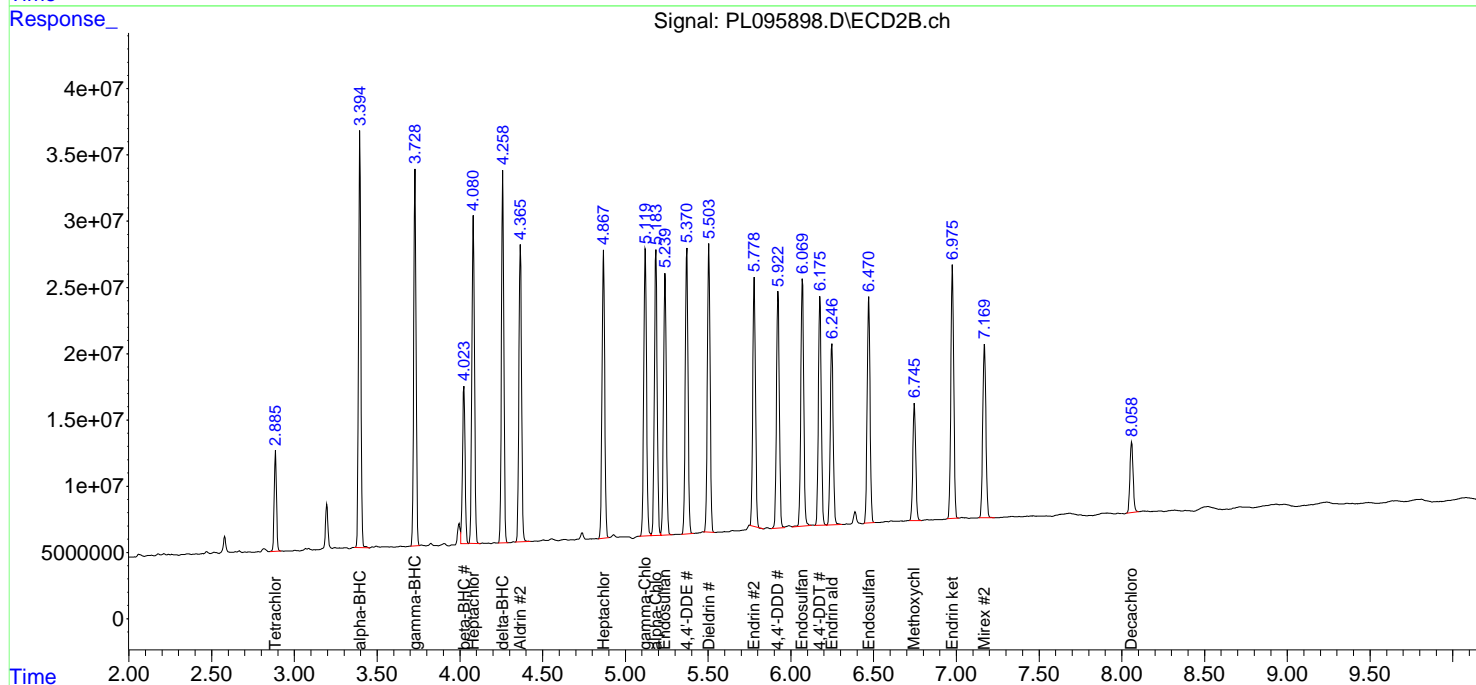
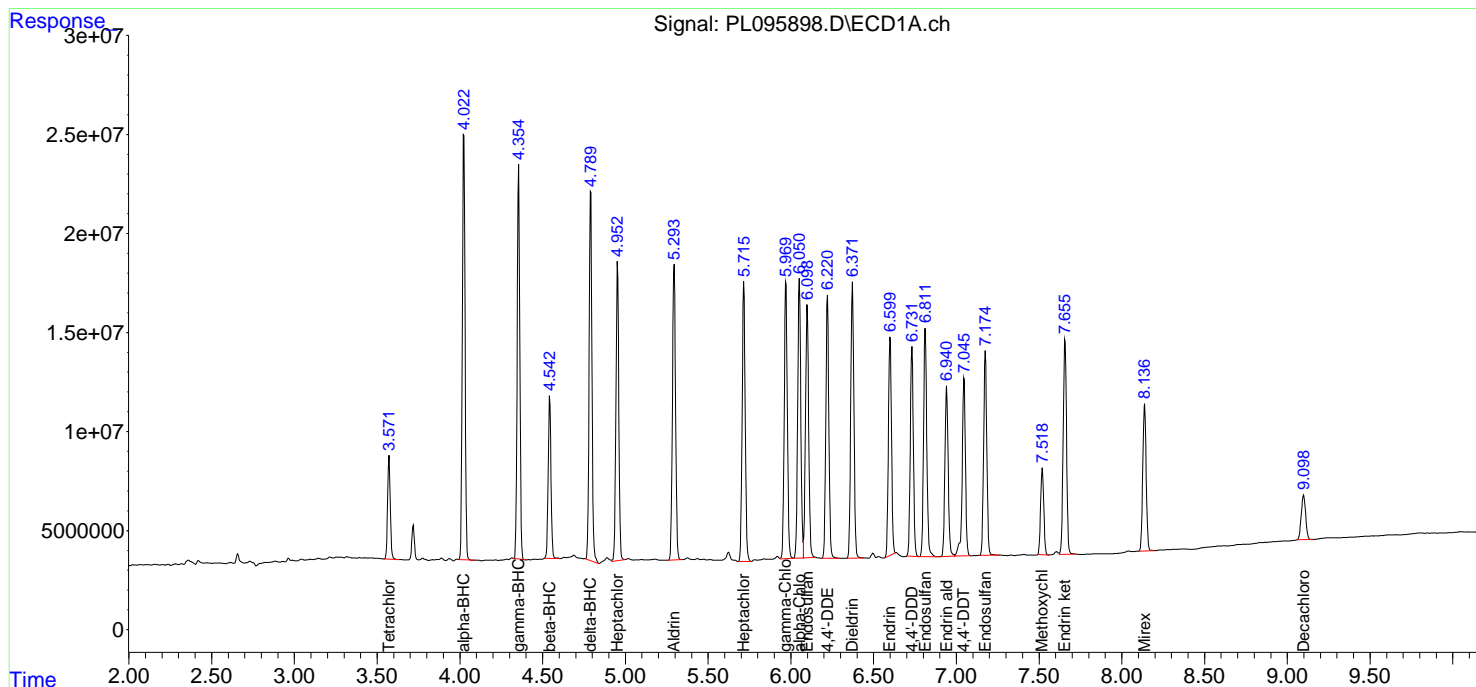
Instrument :
 ECD_L
 ClientSampleId :
 OR-400-CF-402B-COMP-23MS

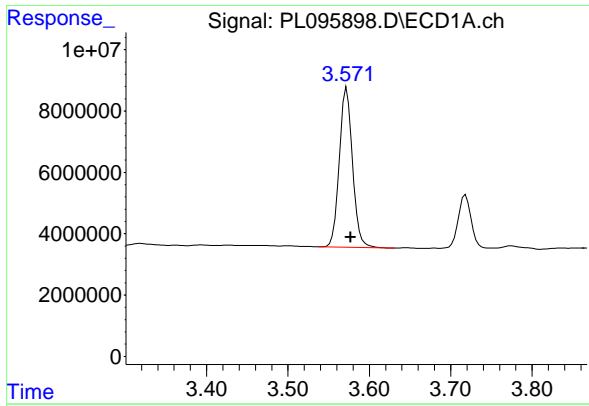
Manual Integrations
 APPROVED

Reviewed By :Abdul Mirza 06/04/2025
 Supervised By :mohammad ahmed 06/05/2025

Integration File signal 1: autoint1.e
 Integration File signal 2: autoint2.e
 Quant Time: Jun 04 03:39:15 2025
 Quant Method : Z:\pestpcbsrv\HPCHEM1\ECD_L\methods\PL052125.M
 Quant Title : GC Extractables
 QLast Update : Thu May 22 06:29:30 2025
 Response via : Initial Calibration
 Integrator: ChemStation

Volume Inj. : 1 µl
 Signal #1 Phase : ZB-MR1 Signal #2 Phase: ZB-MR2
 Signal #1 Info : 30M x 0.32mm x0.5 Signal #2 Info : 30M x 0.32mm x0.25µm





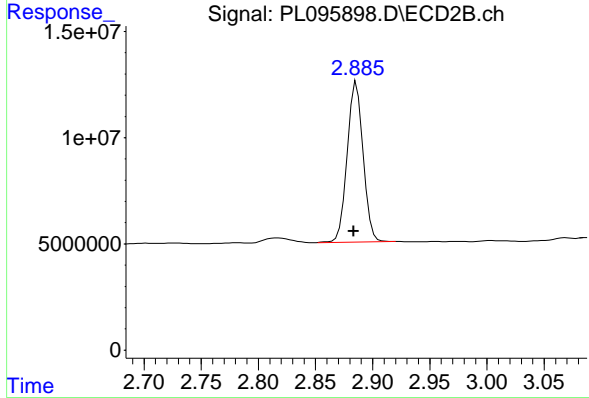
#1 Tetrachloro-m-xylene

R.T.: 3.572 min
 Delta R.T.: -0.005 min
 Response: 58509111
 Conc: 18.54 ng/ml

Instrument : ECD_L
 ClientSampleId : OR-400-CF-402B-COMP-23MS

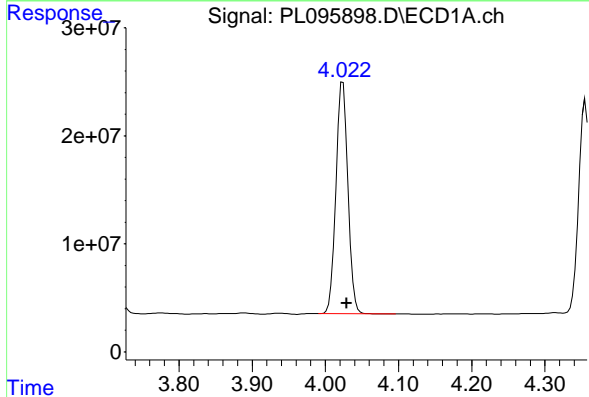
Manual Integrations
 APPROVED

Reviewed By :Abdul Mirza 06/04/2025
 Supervised By :mohammad ahmed 06/05/2025



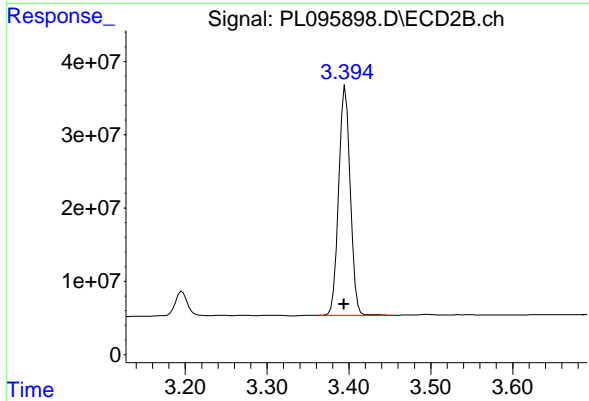
#1 Tetrachloro-m-xylene

R.T.: 2.886 min
 Delta R.T.: 0.002 min
 Response: 73778723
 Conc: 18.85 ng/ml



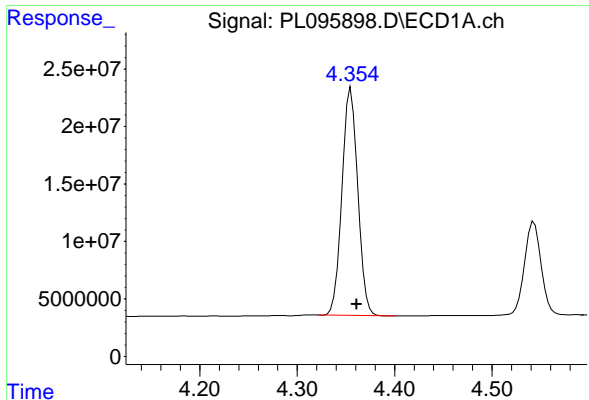
#2 alpha-BHC

R.T.: 4.024 min
 Delta R.T.: -0.005 min
 Response: 243866102
 Conc: 50.30 ng/ml



#2 alpha-BHC

R.T.: 3.396 min
 Delta R.T.: 0.002 min
 Response: 308603229
 Conc: 52.69 ng/ml



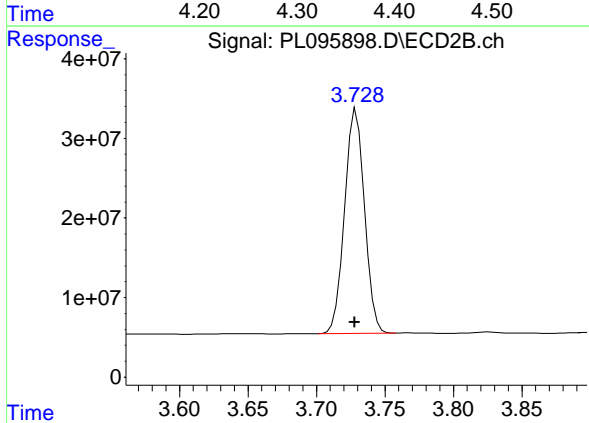
#3 gamma-BHC (Lindane)

R.T.: 4.355 min
 Delta R.T.: -0.006 min
 Response: 222500694
 Conc: 49.76 ng/ml

Instrument : ECD_L
 ClientSampleId : OR-400-CF-402B-COMP-23MS

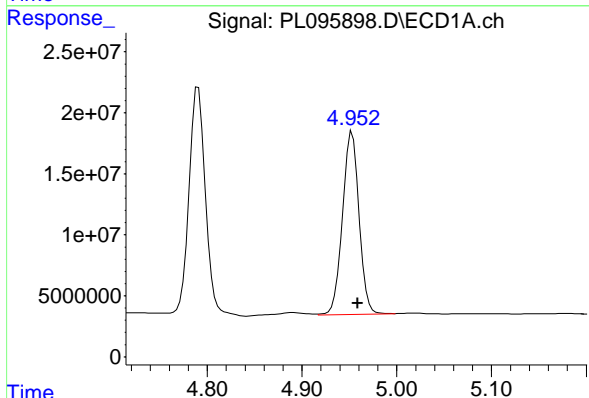
Manual Integrations
 APPROVED

Reviewed By :Abdul Mirza 06/04/2025
 Supervised By :mohammad ahmed 06/05/2025



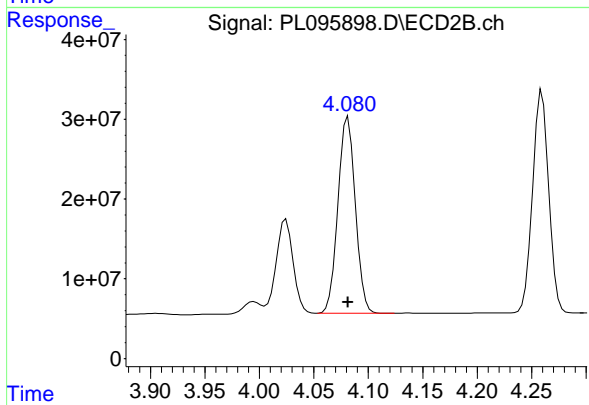
#3 gamma-BHC (Lindane)

R.T.: 3.729 min
 Delta R.T.: 0.001 min
 Response: 285455719
 Conc: 50.96 ng/ml



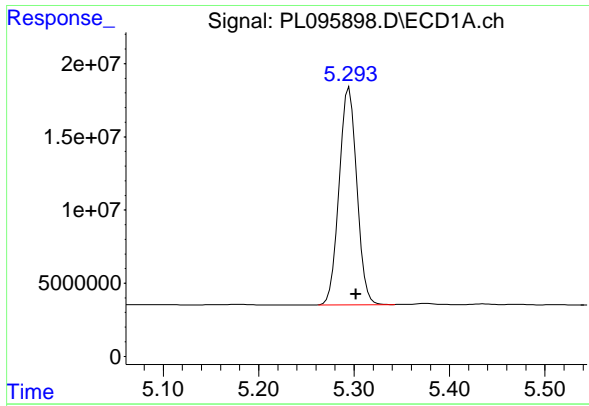
#4 Heptachlor

R.T.: 4.953 min
 Delta R.T.: -0.006 min
 Response: 181412455
 Conc: 47.93 ng/ml



#4 Heptachlor

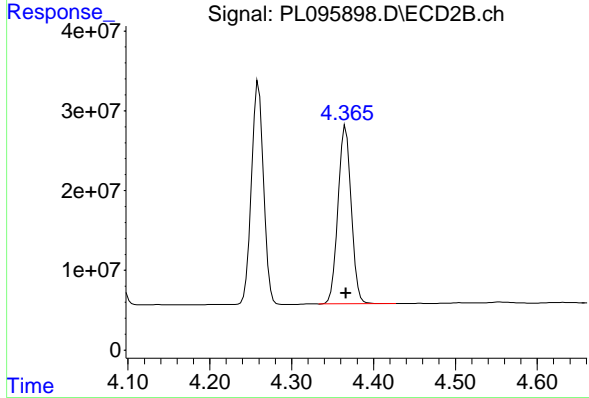
R.T.: 4.081 min
 Delta R.T.: 0.000 min
 Response: 272566426
 Conc: 48.59 ng/ml



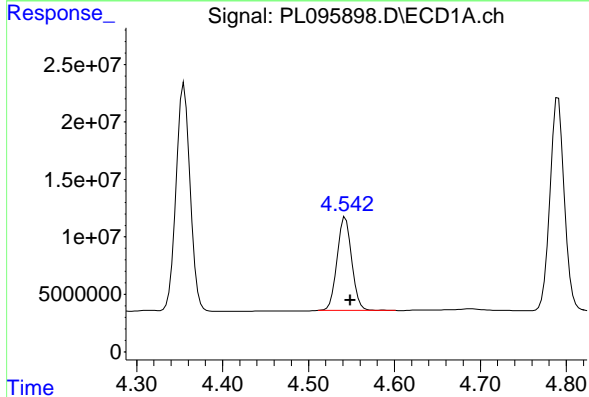
#5 Aldrin
 R.T.: 5.295 min
 Delta R.T.: -0.007 min
 Response: 191283094
 Conc: 44.72 ng/ml

Instrument : ECD_L
 ClientSampleId : OR-400-CF-402B-COMP-23MS

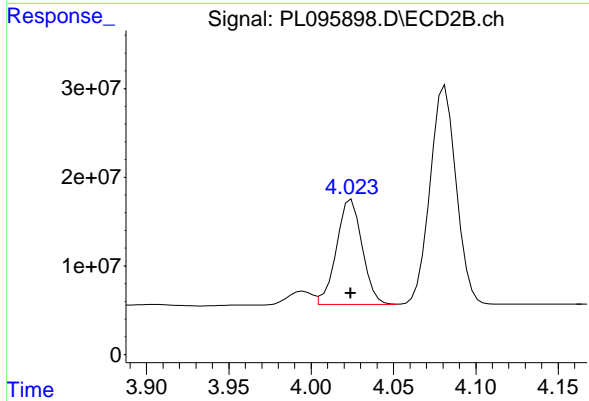
Manual Integrations
APPROVED
 Reviewed By :Abdul Mirza 06/04/2025
 Supervised By :mohammad ahmed 06/05/2025



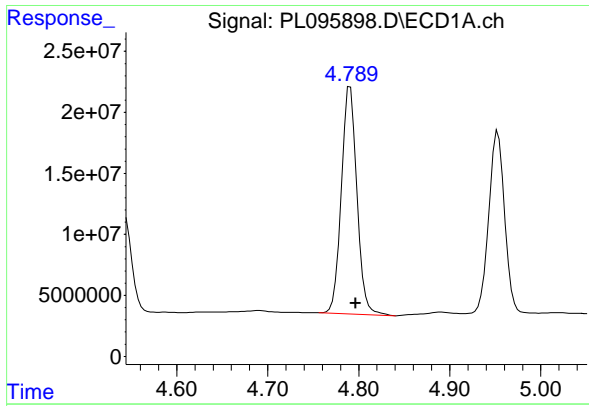
#5 Aldrin
 R.T.: 4.366 min
 Delta R.T.: 0.000 min
 Response: 251267853
 Conc: 47.35 ng/ml



#6 beta-BHC
 R.T.: 4.543 min
 Delta R.T.: -0.006 min
 Response: 96082723
 Conc: 48.74 ng/ml



#6 beta-BHC
 R.T.: 4.023 min
 Delta R.T.: 0.000 min
 Response: 127169893
 Conc: 51.33 ng/ml m



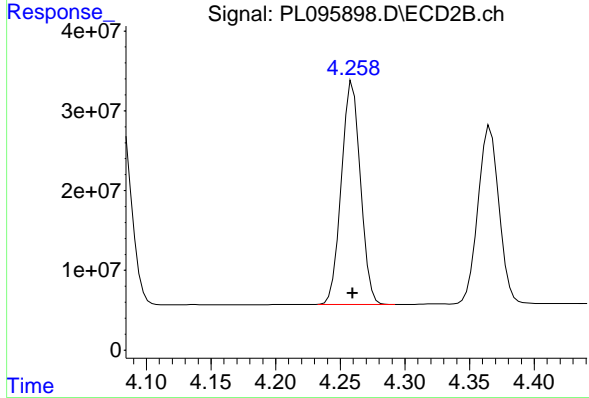
#7 delta-BHC

R.T.: 4.791 min
 Delta R.T.: -0.006 min
 Response: 221696276
 Conc: 50.00 ng/ml

Instrument : ECD_L
 ClientSampleId : OR-400-CF-402B-COMP-23MS

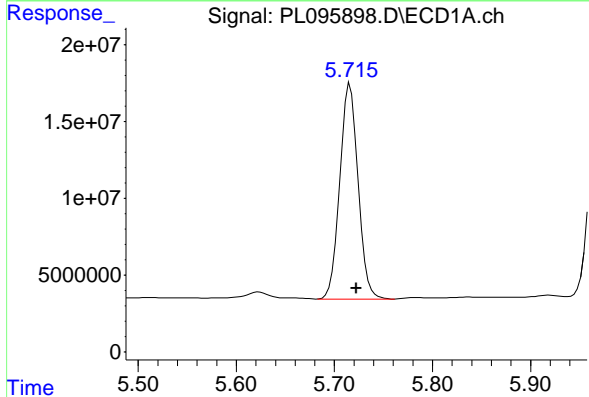
Manual Integrations
 APPROVED

Reviewed By :Abdul Mirza 06/04/2025
 Supervised By :mohammad ahmed 06/05/2025



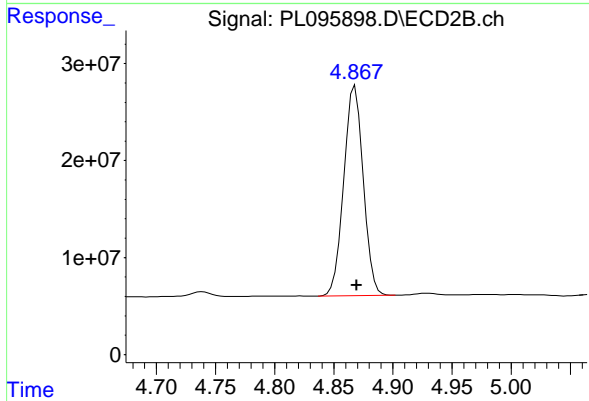
#7 delta-BHC

R.T.: 4.260 min
 Delta R.T.: 0.000 min
 Response: 286864846
 Conc: 50.80 ng/ml



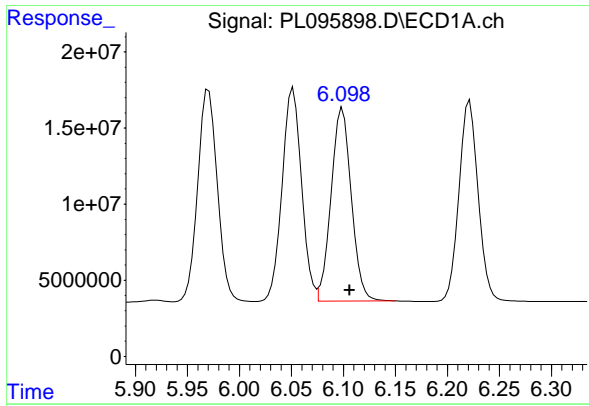
#8 Heptachlor epoxide

R.T.: 5.716 min
 Delta R.T.: -0.006 min
 Response: 182101895
 Conc: 47.71 ng/ml



#8 Heptachlor epoxide

R.T.: 4.868 min
 Delta R.T.: -0.001 min
 Response: 247755830
 Conc: 50.18 ng/ml



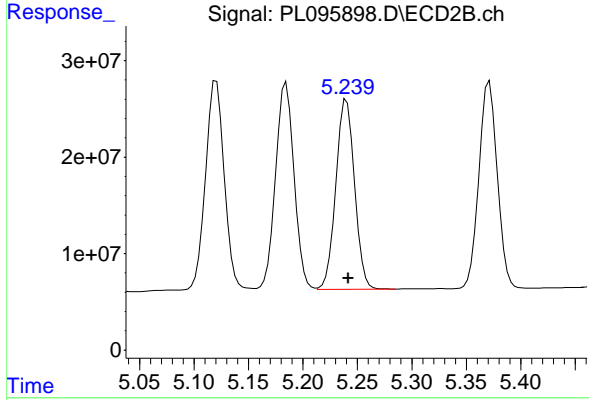
#9 Endosulfan I

R.T.: 6.099 min
 Delta R.T.: -0.007 min
 Response: 172126654
 Conc: 46.97 ng/ml

Instrument : ECD_L
 ClientSampleId : OR-400-CF-402B-COMP-23MS

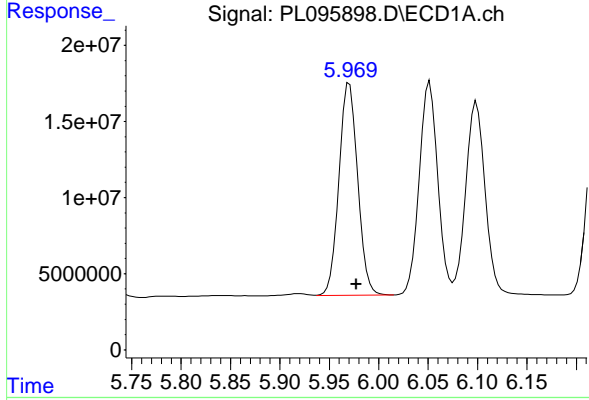
Manual Integrations
 APPROVED

Reviewed By :Abdul Mirza 06/04/2025
 Supervised By :mohammad ahmed 06/05/2025



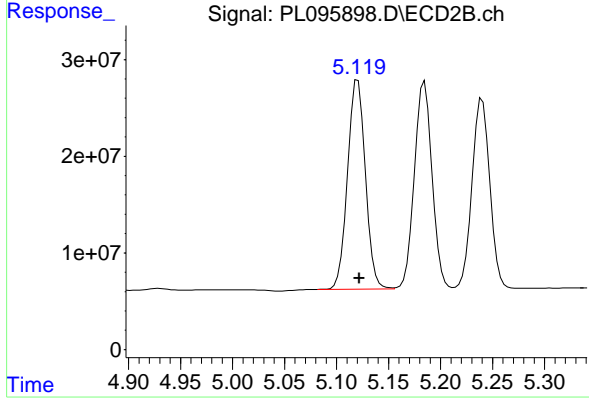
#9 Endosulfan I

R.T.: 5.240 min
 Delta R.T.: -0.002 min
 Response: 233698305
 Conc: 49.05 ng/ml



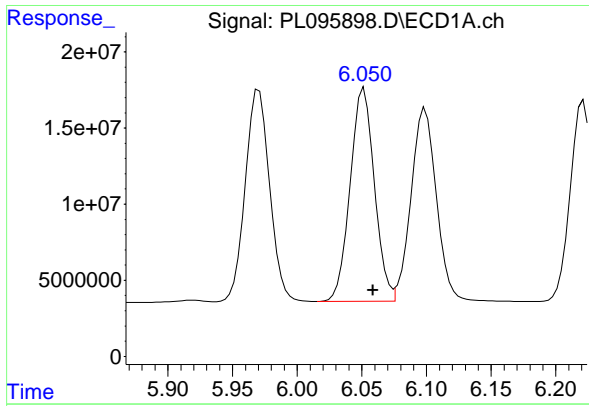
#10 gamma-Chlordane

R.T.: 5.970 min
 Delta R.T.: -0.007 min
 Response: 183559492
 Conc: 47.16 ng/ml



#10 gamma-Chlordane

R.T.: 5.120 min
 Delta R.T.: -0.001 min
 Response: 258687083
 Conc: 49.25 ng/ml



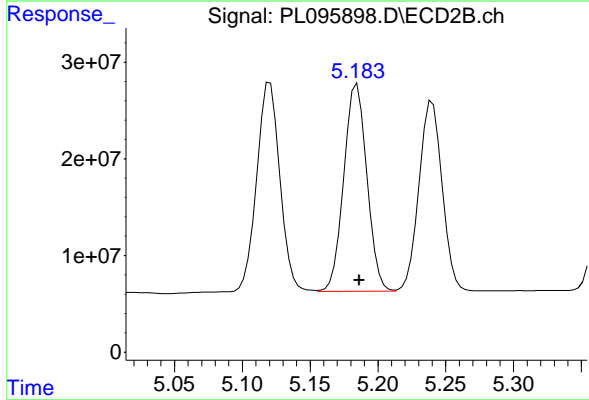
#11 alpha-Chlordane

R.T.: 6.052 min
 Delta R.T.: -0.007 min
 Response: 182455912
 Conc: 46.21 ng/ml

Instrument : ECD_L
 ClientSampleId : OR-400-CF-402B-COMP-23MS

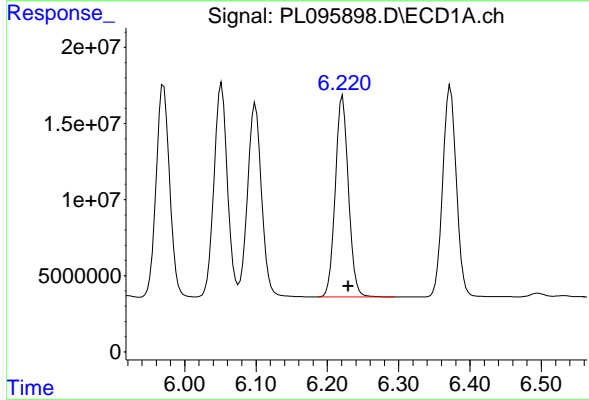
Manual Integrations
 APPROVED

Reviewed By :Abdul Mirza 06/04/2025
 Supervised By :mohammad ahmed 06/05/2025



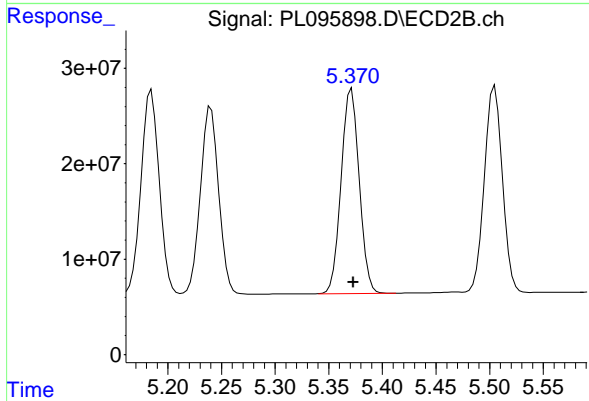
#11 alpha-Chlordane

R.T.: 5.185 min
 Delta R.T.: -0.002 min
 Response: 254117755
 Conc: 48.84 ng/ml



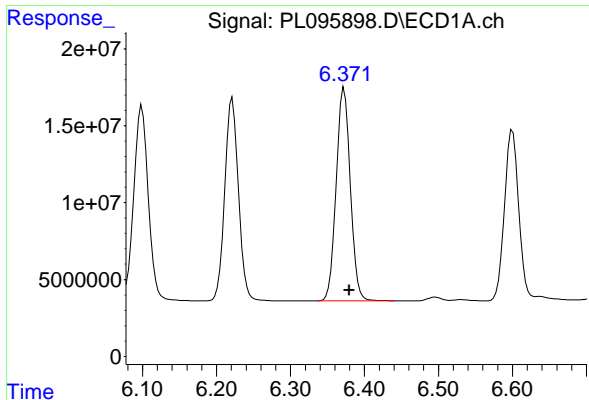
#12 4,4'-DDE

R.T.: 6.221 min
 Delta R.T.: -0.008 min
 Response: 169583997
 Conc: 46.23 ng/ml



#12 4,4'-DDE

R.T.: 5.371 min
 Delta R.T.: -0.002 min
 Response: 252054226
 Conc: 47.01 ng/ml



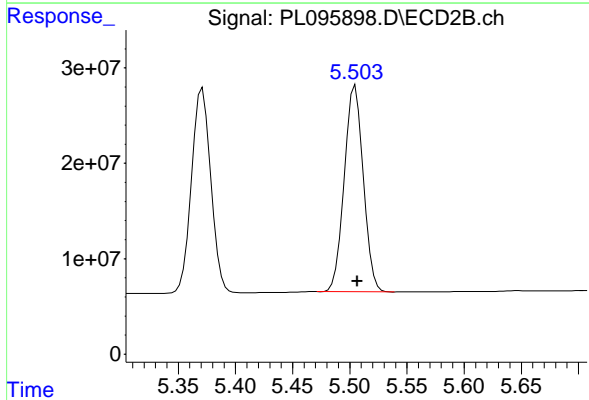
#13 Dieldrin

R.T.: 6.373 min
 Delta R.T.: -0.007 min
 Response: 183866070
 Conc: 47.64 ng/ml

Instrument : ECD_L
 ClientSampleId : OR-400-CF-402B-COMP-23MS

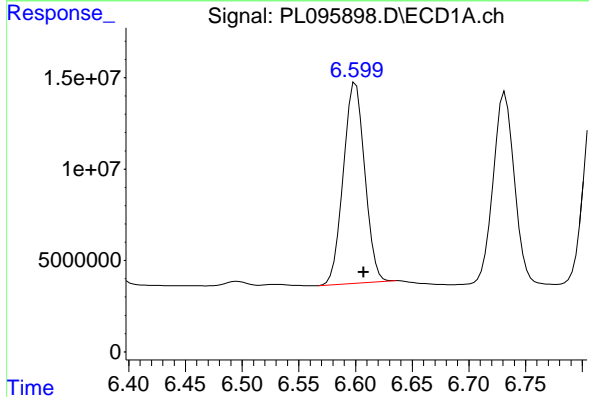
Manual Integrations
 APPROVED

Reviewed By :Abdul Mirza 06/04/2025
 Supervised By :mohammad ahmed 06/05/2025



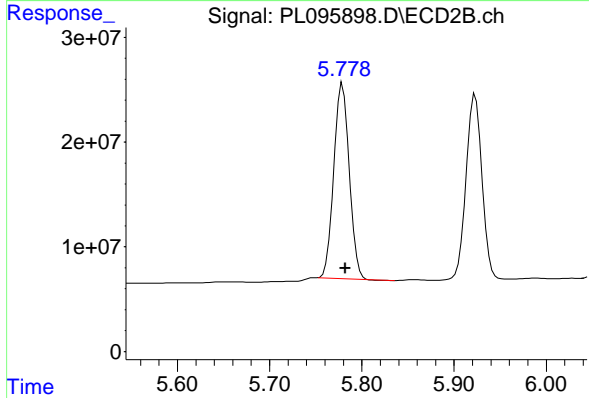
#13 Dieldrin

R.T.: 5.505 min
 Delta R.T.: -0.002 min
 Response: 252014996
 Conc: 47.55 ng/ml



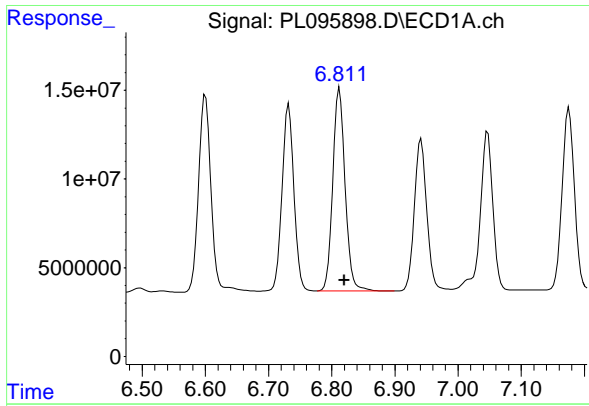
#14 Endrin

R.T.: 6.600 min
 Delta R.T.: -0.007 min
 Response: 144633371
 Conc: 44.82 ng/ml



#14 Endrin

R.T.: 5.779 min
 Delta R.T.: -0.003 min
 Response: 217484356
 Conc: 44.60 ng/ml



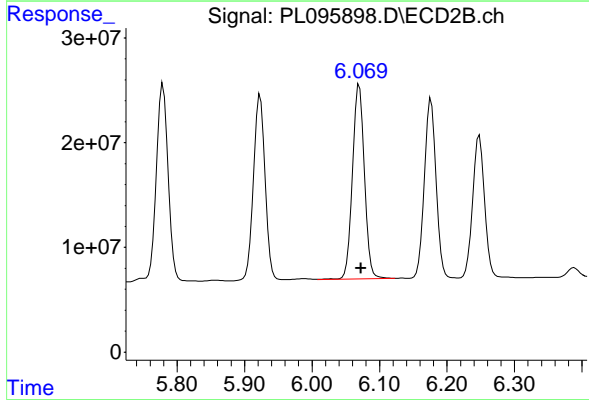
#15 Endosulfan II

R.T.: 6.812 min
 Delta R.T.: -0.008 min
 Response: 154577641
 Conc: 44.86 ng/ml

Instrument :
 ECD_L
 ClientSampleId :
 OR-400-CF-402B-COMP-23MS

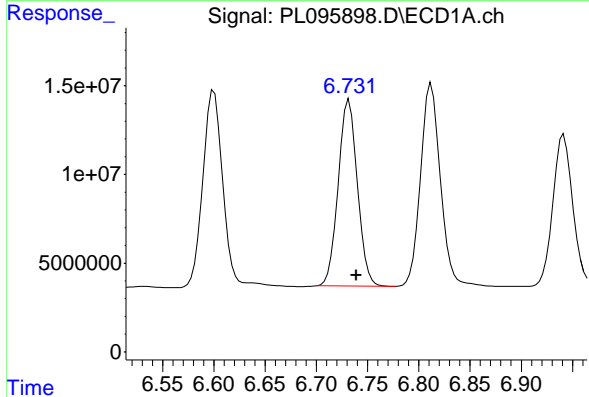
Manual Integrations
 APPROVED

Reviewed By :Abdul Mirza 06/04/2025
 Supervised By :mohammad ahmed 06/05/2025



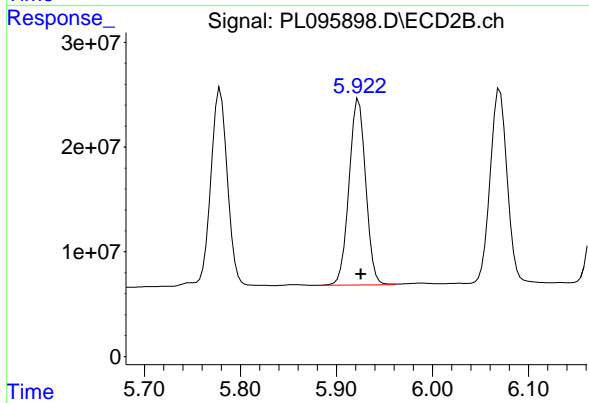
#15 Endosulfan II

R.T.: 6.070 min
 Delta R.T.: -0.002 min
 Response: 229144592
 Conc: 48.22 ng/ml



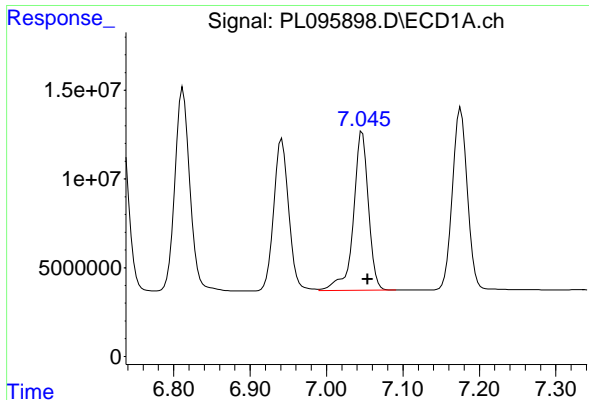
#16 4,4'-DDD

R.T.: 6.732 min
 Delta R.T.: -0.007 min
 Response: 136120331
 Conc: 46.45 ng/ml



#16 4,4'-DDD

R.T.: 5.923 min
 Delta R.T.: -0.003 min
 Response: 213778032
 Conc: 48.75 ng/ml



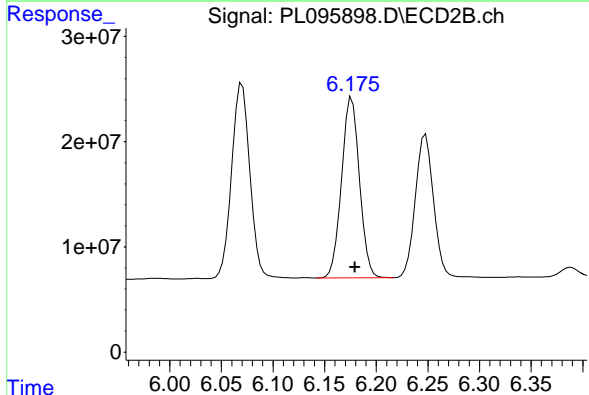
#17 4,4' -DDT

R.T.: 7.047 min
 Delta R.T.: -0.007 min
 Response: 124065790
 Conc: 45.86 ng/ml

Instrument : ECD_L
 ClientSampleId : OR-400-CF-402B-COMP-23MS

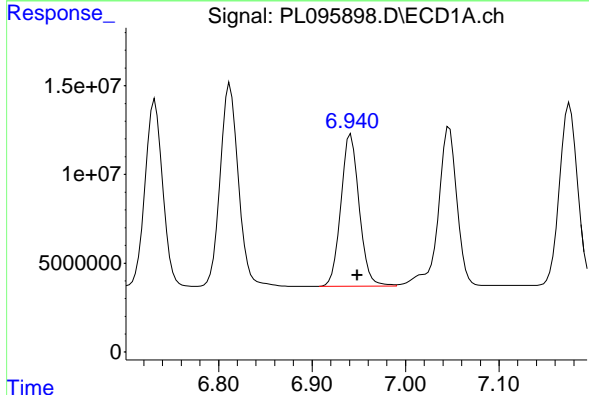
Manual Integrations
 APPROVED

Reviewed By :Abdul Mirza 06/04/2025
 Supervised By :mohammad ahmed 06/05/2025



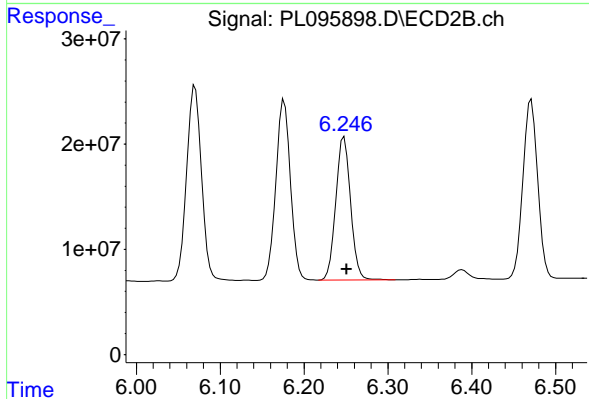
#17 4,4' -DDT

R.T.: 6.176 min
 Delta R.T.: -0.003 min
 Response: 207074468
 Conc: 43.30 ng/ml



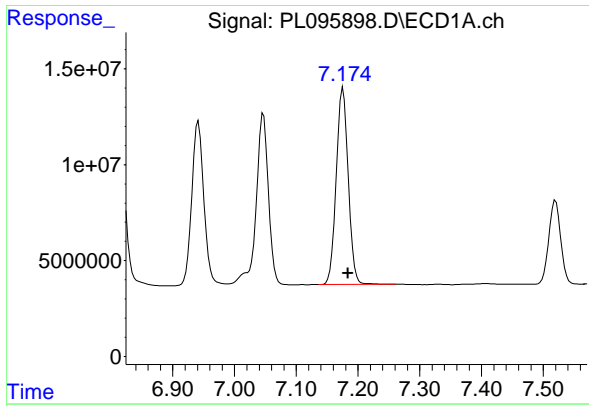
#18 Endrin aldehyde

R.T.: 6.941 min
 Delta R.T.: -0.007 min
 Response: 116536421
 Conc: 48.20 ng/ml



#18 Endrin aldehyde

R.T.: 6.248 min
 Delta R.T.: -0.003 min
 Response: 167077537
 Conc: 48.37 ng/ml



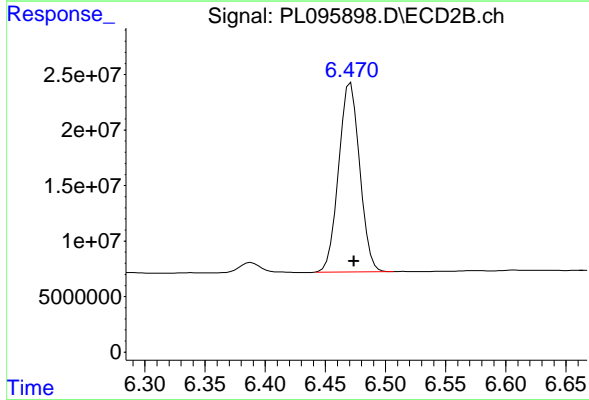
#19 Endosulfan Sulfate

R.T.: 7.176 min
 Delta R.T.: -0.008 min
 Response: 138649413
 Conc: 46.42 ng/ml

Instrument : ECD_L
 ClientSampleId : OR-400-CF-402B-COMP-23MS

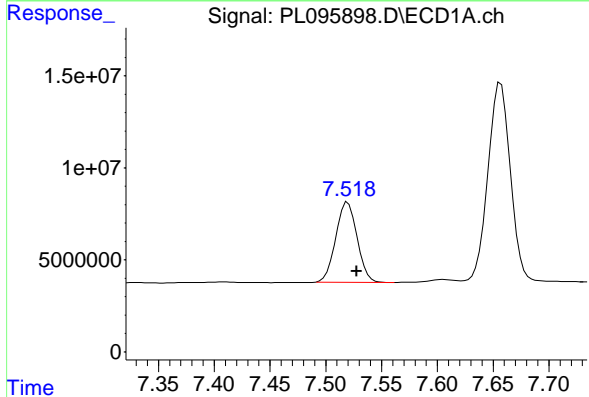
Manual Integrations
 APPROVED

Reviewed By :Abdul Mirza 06/04/2025
 Supervised By :mohammad ahmed 06/05/2025



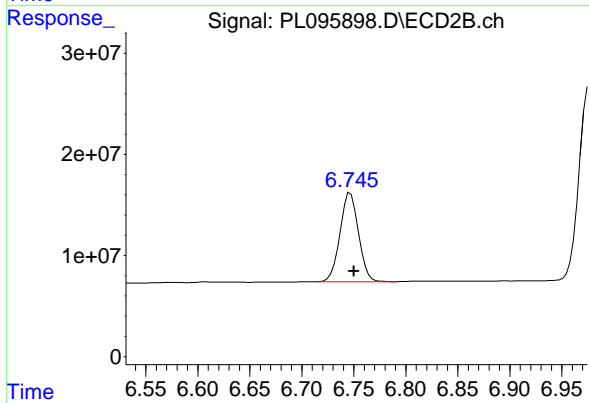
#19 Endosulfan Sulfate

R.T.: 6.471 min
 Delta R.T.: -0.003 min
 Response: 207491492
 Conc: 46.16 ng/ml



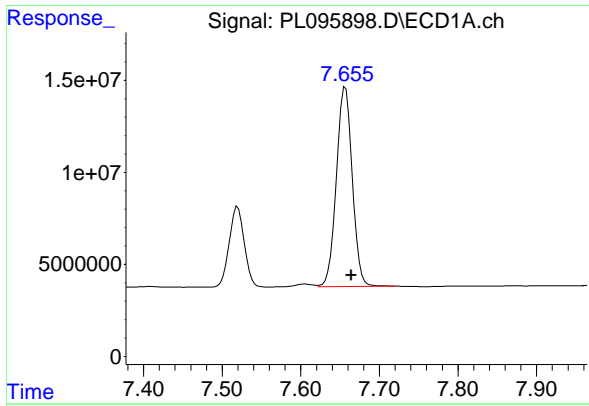
#20 Methoxychlor

R.T.: 7.520 min
 Delta R.T.: -0.008 min
 Response: 57735485
 Conc: 45.27 ng/ml



#20 Methoxychlor

R.T.: 6.747 min
 Delta R.T.: -0.003 min
 Response: 108889932
 Conc: 41.62 ng/ml



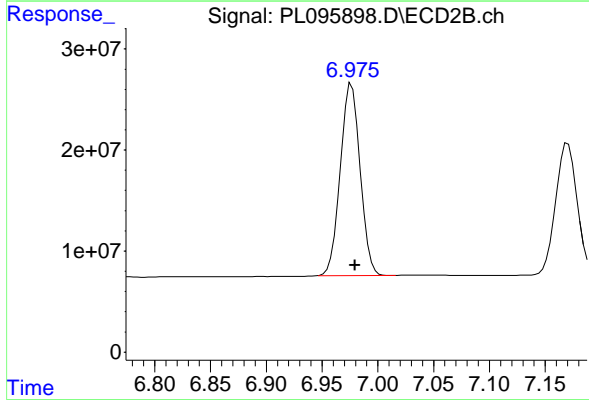
#21 Endrin ketone

R.T.: 7.657 min
 Delta R.T.: -0.007 min
 Response: 152067428
 Conc: 48.02 ng/ml

Instrument : ECD_L
 ClientSampleId : OR-400-CF-402B-COMP-23MS

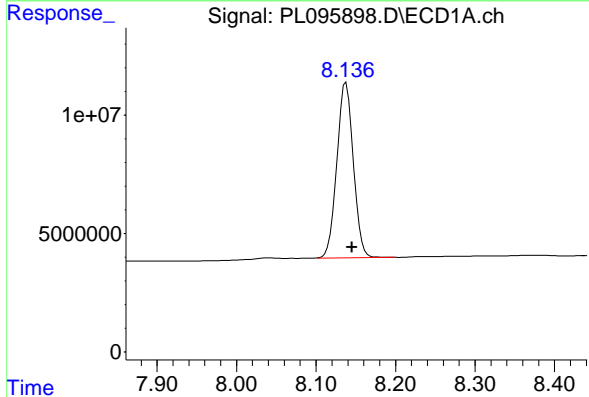
Manual Integrations
 APPROVED

Reviewed By :Abdul Mirza 06/04/2025
 Supervised By :mohammad ahmed 06/05/2025



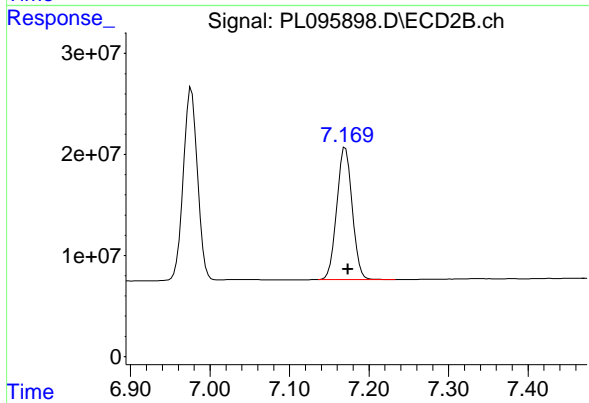
#21 Endrin ketone

R.T.: 6.977 min
 Delta R.T.: -0.003 min
 Response: 234880393
 Conc: 45.40 ng/ml



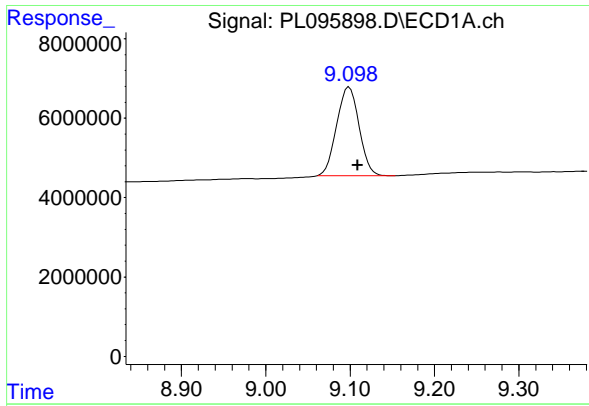
#22 Mirex

R.T.: 8.138 min
 Delta R.T.: -0.008 min
 Response: 106579196
 Conc: 46.06 ng/ml



#22 Mirex

R.T.: 7.170 min
 Delta R.T.: -0.003 min
 Response: 176437777
 Conc: 43.45 ng/ml



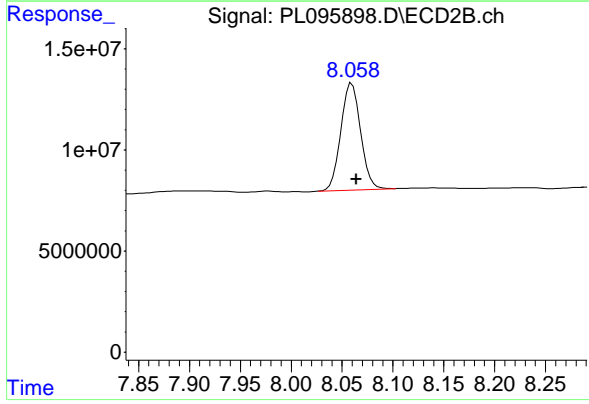
#28 Decachlorobiphenyl

R.T.: 9.099 min
 Delta R.T.: -0.010 min
 Response: 41292066
 Conc: 17.52 ng/ml

Instrument :
 ECD_L
 ClientSampleId :
 OR-400-CF-402B-COMP-23MS

Manual Integrations
 APPROVED

Reviewed By :Abdul Mirza 06/04/2025
 Supervised By :mohammad ahmed 06/05/2025



#28 Decachlorobiphenyl

R.T.: 8.060 min
 Delta R.T.: -0.004 min
 Response: 71495810
 Conc: 16.34 ng/ml