

Data Path : Z:\svoasrv\HPCHEM1\BNA_M\Data\BM060625\
 Data File : BM050207.D
 Acq On : 06 Jun 2025 10:08
 Operator : RC/JU
 Sample : PB168269BL
 Misc :
 ALS Vial : 3 Sample Multiplier: 1

Instrument :
 BNA_M
 ClientSampleId :
 PB168269BL

Quant Time: Jun 06 10:53:13 2025
 Quant Method : Z:\svoasrv\HPCHEM1\BNA_M\Methods\8270-BM060525.M
 Quant Title : ASP BNA STANDARDS FOR 5 POINT CALIBRATION
 QLast Update : Thu Jun 05 16:20:25 2025
 Response via : Initial Calibration

Compound	R.T.	QIon	Response	Conc Units	Dev(Min)
Internal Standards					
1) 1,4-Dichlorobenzene-d4	7.787	152	307416	20.000 ng	0.00
21) Naphthalene-d8	10.575	136	1142669	20.000 ng	0.00
39) Acenaphthene-d10	14.410	164	634427	20.000 ng	0.00
64) Phenanthrene-d10	17.151	188	1133741	20.000 ng	0.00
76) Chrysene-d12	21.380	240	982238	20.000 ng	0.00
86) Perylene-d12	24.368	264	1022855	20.000 ng	0.00
System Monitoring Compounds					
5) 2-Fluorophenol	5.375	112	2527466	137.149 ng	0.00
7) Phenol-d6	6.951	99	3136982	129.309 ng	0.00
23) Nitrobenzene-d5	8.934	82	1832446	83.403 ng	-0.01
42) 2,4,6-Tribromophenol	15.892	330	906461	125.615 ng	-0.01
45) 2-Fluorobiphenyl	13.039	172	3884866	82.902 ng	-0.01
79) Terphenyl-d14	19.780	244	4336326	83.660 ng	0.00

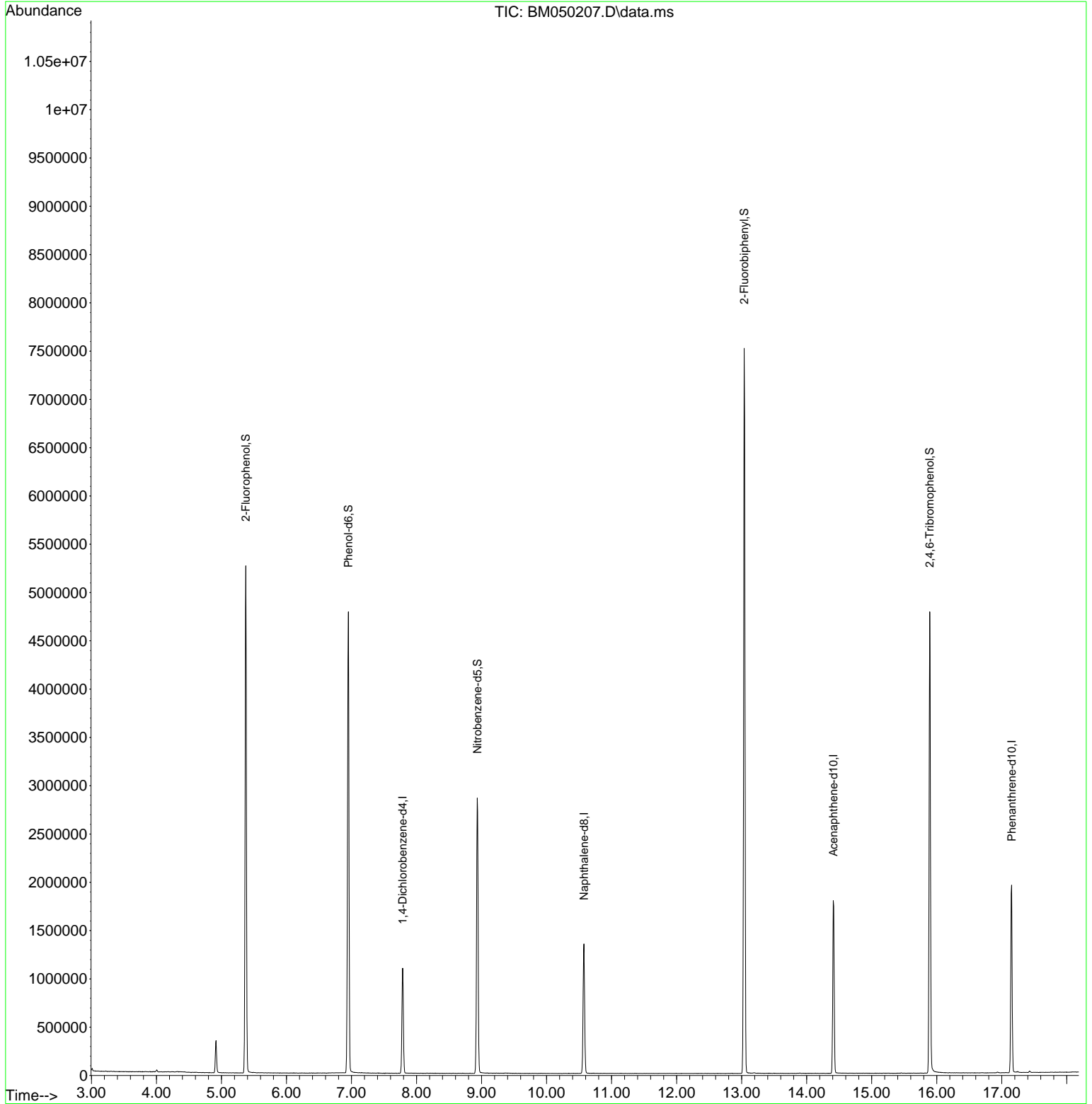
Target Compounds Qvalue

(#) = qualifier out of range (m) = manual integration (+) = signals summed

Data Path : Z:\svoasrv\HPCHEM1\BNA_M\Data\BM060625\
 Data File : BM050207.D
 Acq On : 06 Jun 2025 10:08
 Operator : RC/JU
 Sample : PB168269BL
 Misc :
 ALS Vial : 3 Sample Multiplier: 1

Instrument :
 BNA_M
 ClientSampleId :
 PB168269BL

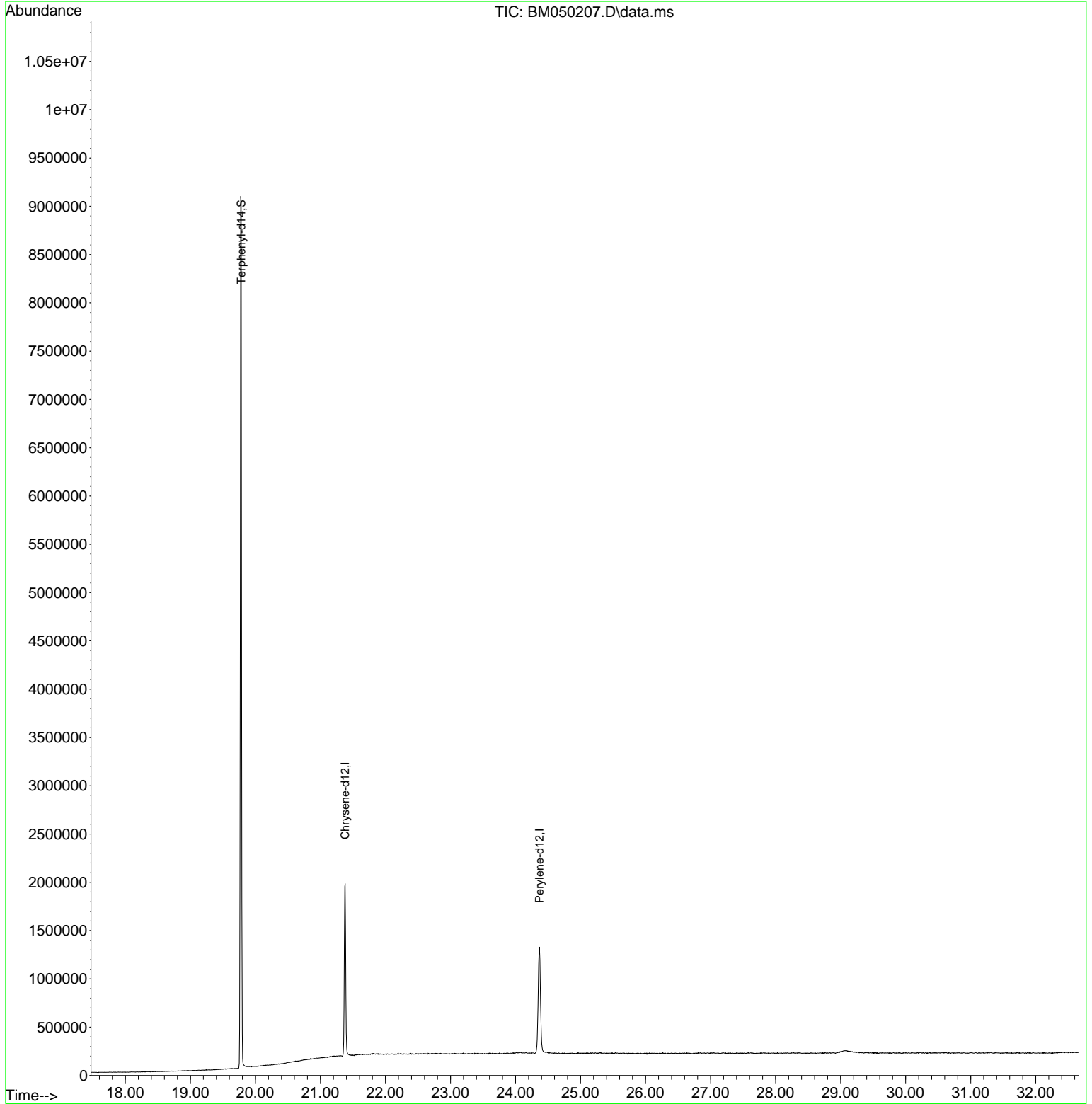
Quant Time: Jun 06 10:53:13 2025
 Quant Method : Z:\svoasrv\HPCHEM1\BNA_M\Methods\8270-BM060525.M
 Quant Title : ASP BNA STANDARDS FOR 5 POINT CALIBRATION
 QLast Update : Thu Jun 05 16:20:25 2025
 Response via : Initial Calibration

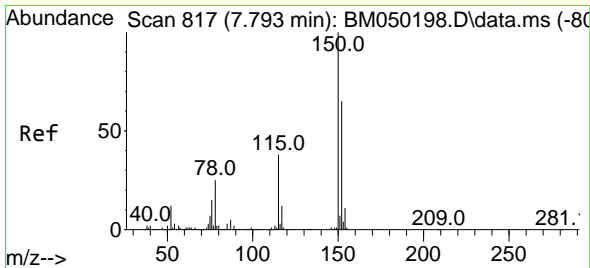


Data Path : Z:\svoasrv\HPCHEM1\BNA_M\Data\BM060625\
Data File : BM050207.D
Acq On : 06 Jun 2025 10:08
Operator : RC/JU
Sample : PB168269BL
Misc :
ALS Vial : 3 Sample Multiplier: 1

Instrument :
BNA_M
ClientSampleId :
PB168269BL

Quant Time: Jun 06 10:53:13 2025
Quant Method : Z:\svoasrv\HPCHEM1\BNA_M\Methods\8270-BM060525.M
Quant Title : ASP BNA STANDARDS FOR 5 POINT CALIBRATION
QLast Update : Thu Jun 05 16:20:25 2025
Response via : Initial Calibration



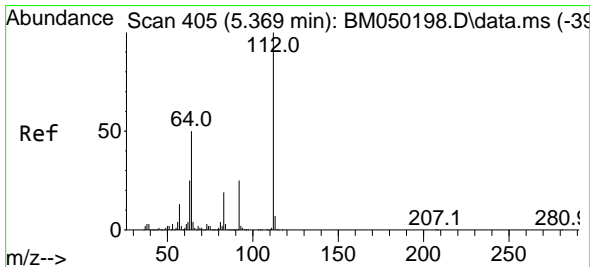
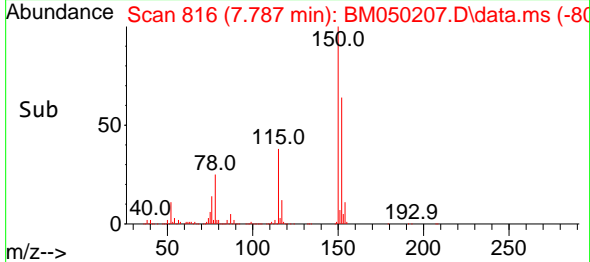
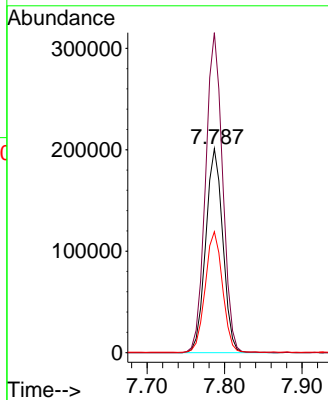
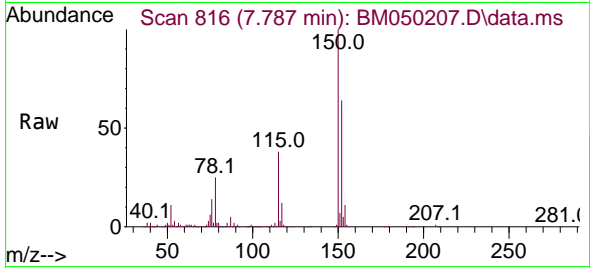


#1
 1,4-Dichlorobenzene-d4
 Concen: 20.000 ng
 RT: 7.787 min Scan# 81
 Delta R.T. -0.006 min
 Lab File: BM050207.D
 Acq: 06 Jun 2025 10:08

Instrument :
 BNA_M
 ClientSampleId :
 PB168269BL

Tgt Ion:152 Resp: 307416

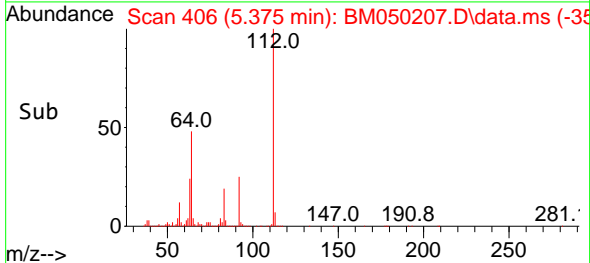
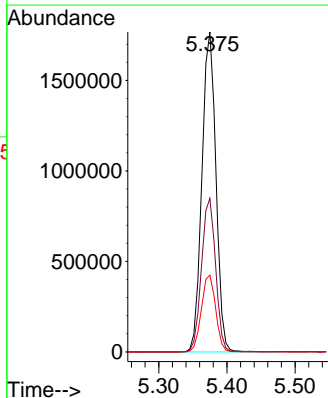
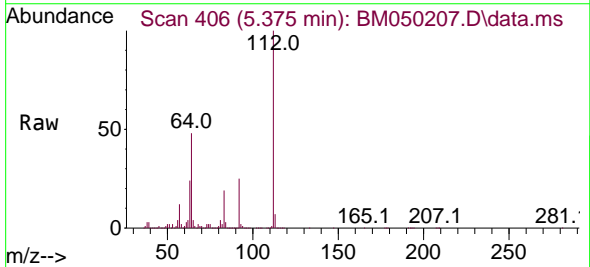
Ion	Ratio	Lower	Upper
152	100		
150	157.0	122.2	183.4
115	59.3	46.3	69.5

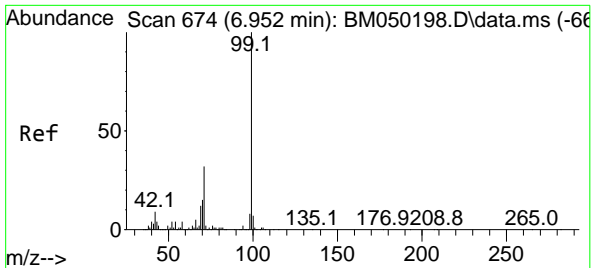


#5
 2-Fluorophenol
 Concen: 137.149 ng
 RT: 5.375 min Scan# 406
 Delta R.T. -0.000 min
 Lab File: BM050207.D
 Acq: 06 Jun 2025 10:08

Tgt Ion:112 Resp: 2527466

Ion	Ratio	Lower	Upper
112	100		
64	48.0	39.8	59.6
63	24.0	19.8	29.8



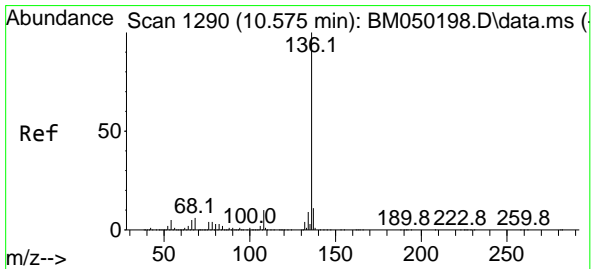
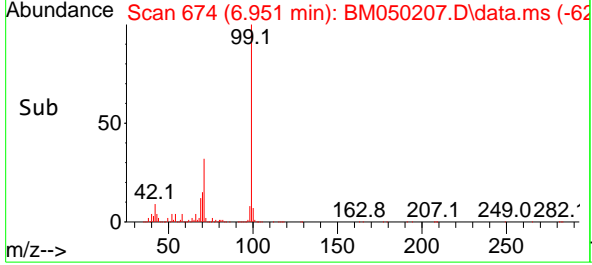
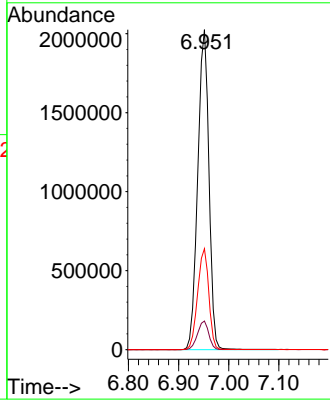
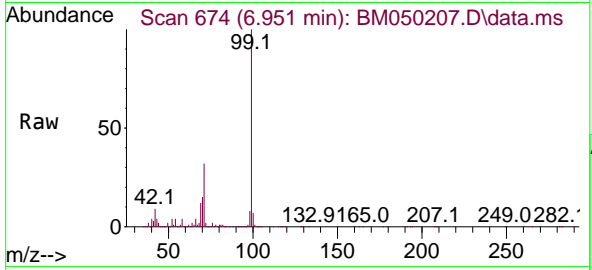


#7
 Phenol-d6
 Concen: 129.309 ng
 RT: 6.951 min Scan# 61
 Delta R.T. -0.006 min
 Lab File: BM050207.D
 Acq: 06 Jun 2025 10:08

Instrument :
 BNA_M
 ClientSampleId :
 PB168269BL

Tgt Ion: 99 Resp: 3136982

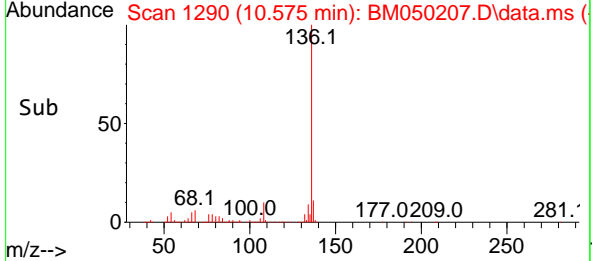
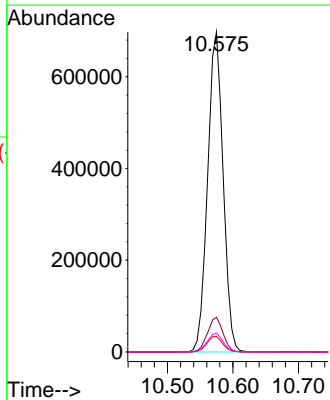
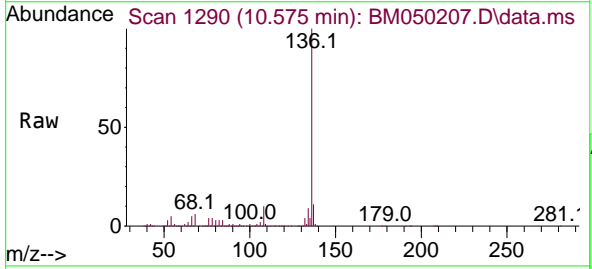
Ion	Ratio	Lower	Upper
99	100		
42	8.9	6.9	10.3
71	31.5	25.3	37.9

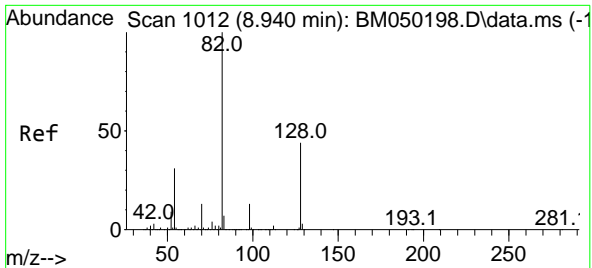


#21
 Naphthalene-d8
 Concen: 20.000 ng
 RT: 10.575 min Scan# 1290
 Delta R.T. -0.006 min
 Lab File: BM050207.D
 Acq: 06 Jun 2025 10:08

Tgt Ion: 136 Resp: 1142669

Ion	Ratio	Lower	Upper
136	100		
137	10.8	8.6	13.0
54	4.9	3.8	5.8
68	5.9	4.9	7.3



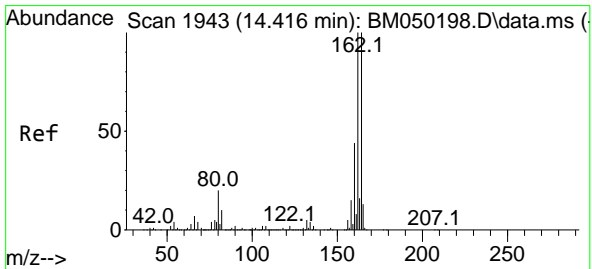
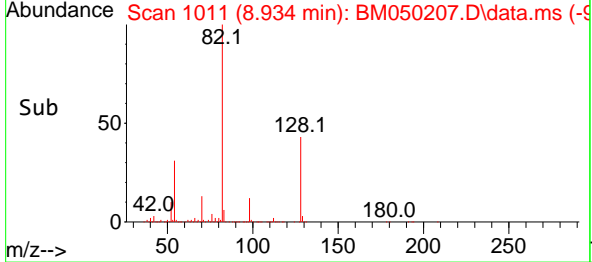
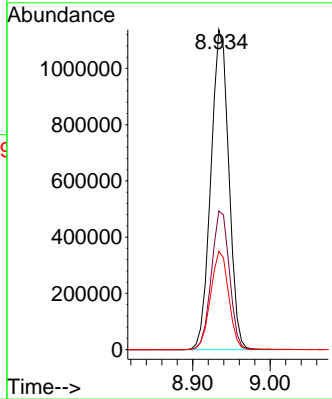
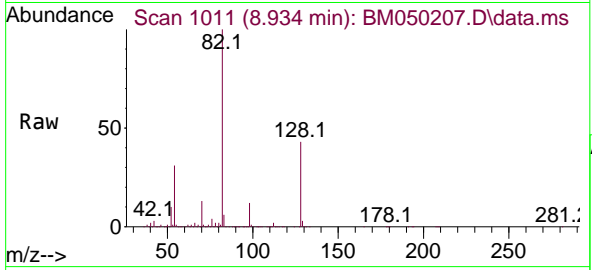


#23
 Nitrobenzene-d5
 Concen: 83.403 ng
 RT: 8.934 min Scan# 1011
 Delta R.T. -0.012 min
 Lab File: BM050207.D
 Acq: 06 Jun 2025 10:08

Instrument : BNA_M
 ClientSampleId : PB168269BL

Tgt Ion: 82 Resp: 1832446

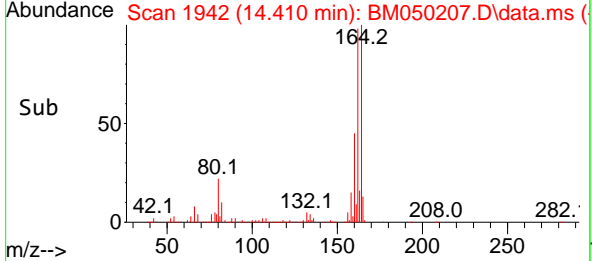
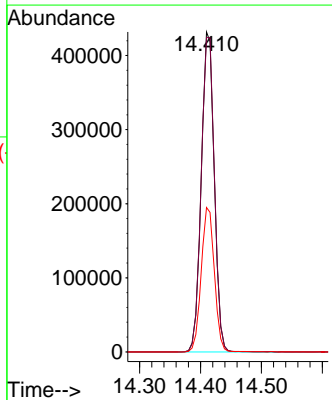
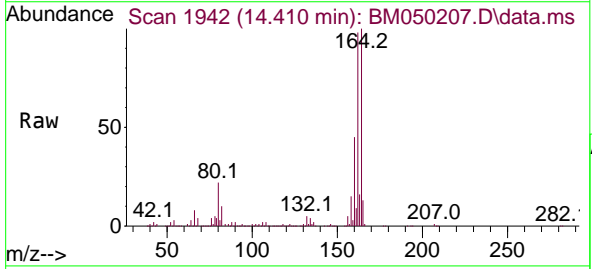
Ion	Ratio	Lower	Upper
82	100		
128	43.3	35.2	52.8
54	30.7	24.5	36.7

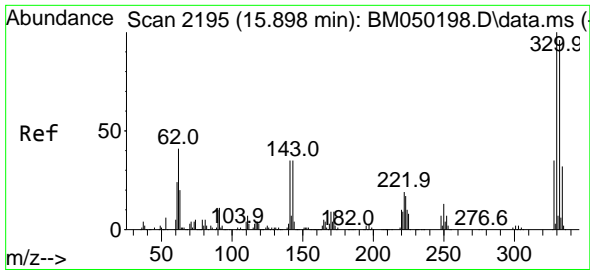


#39
 Acenaphthene-d10
 Concen: 20.000 ng
 RT: 14.410 min Scan# 1942
 Delta R.T. -0.006 min
 Lab File: BM050207.D
 Acq: 06 Jun 2025 10:08

Tgt Ion: 164 Resp: 634427

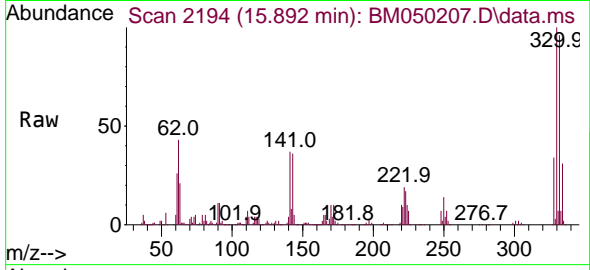
Ion	Ratio	Lower	Upper
164	100		
162	98.3	80.2	120.4
160	45.1	35.7	53.5



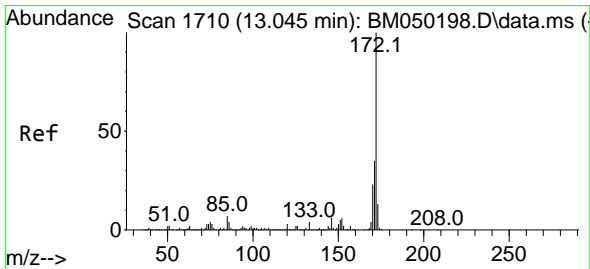
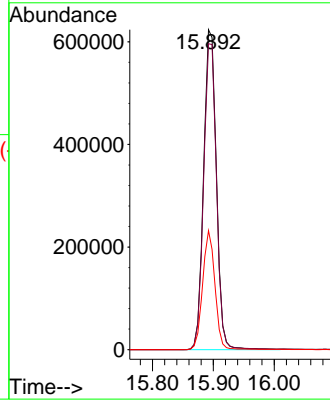
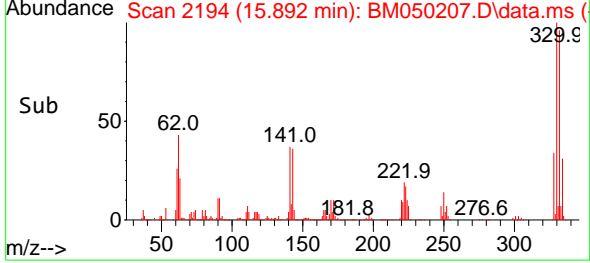


#42
 2,4,6-Tribromophenol
 Concen: 125.615 ng
 RT: 15.892 min Scan# 21
 Delta R.T. -0.012 min
 Lab File: BM050207.D
 Acq: 06 Jun 2025 10:08

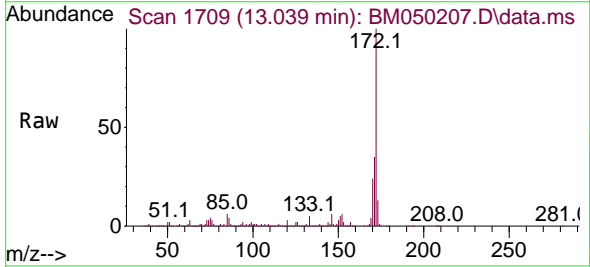
Instrument :
 BNA_M
 ClientSampleId :
 PB168269BL



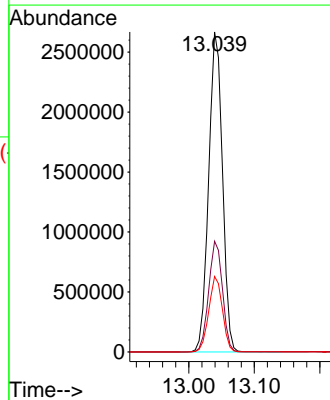
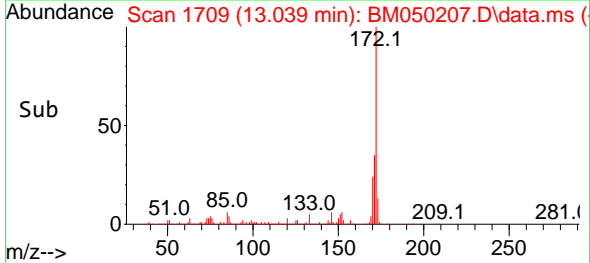
Tgt Ion:330 Resp: 906461
 Ion Ratio Lower Upper
 330 100
 332 96.4 77.5 116.3
 141 35.8 28.8 43.2

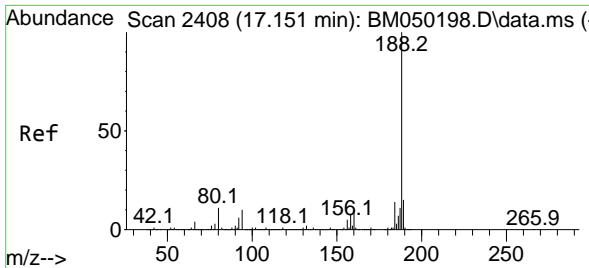


#45
 2-Fluorobiphenyl
 Concen: 82.902 ng
 RT: 13.039 min Scan# 1709
 Delta R.T. -0.012 min
 Lab File: BM050207.D
 Acq: 06 Jun 2025 10:08



Tgt Ion:172 Resp: 3884866
 Ion Ratio Lower Upper
 172 100
 171 34.6 27.8 41.6
 170 23.6 18.6 27.8





#64
 Phenanthrene-d10
 Concen: 20.000 ng
 RT: 17.151 min Scan# 24
 Delta R.T. -0.006 min
 Lab File: BM050207.D
 Acq: 06 Jun 2025 10:08

Instrument :

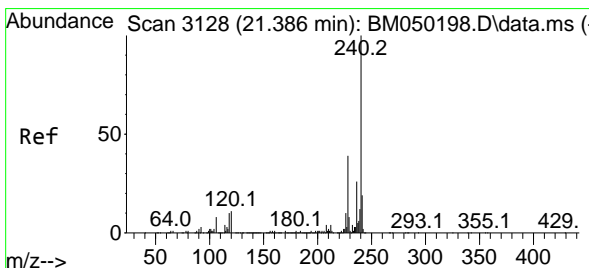
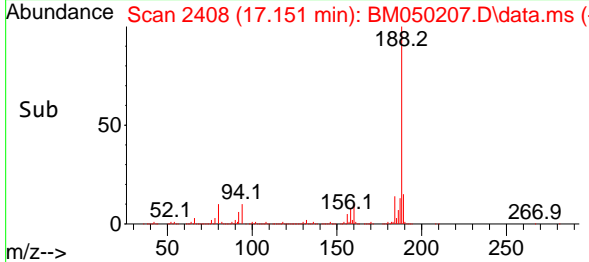
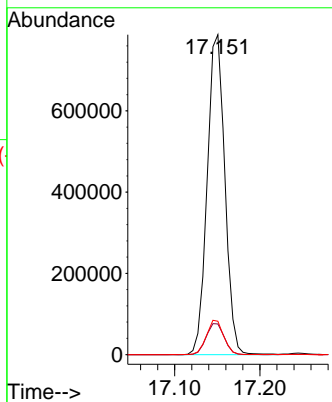
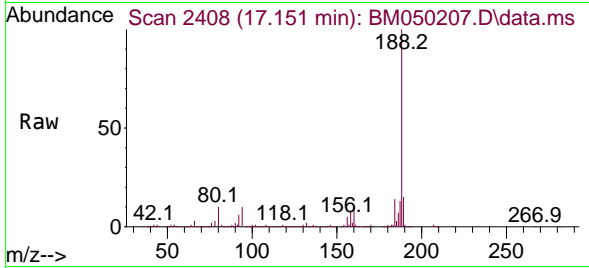
BNA_M

ClientSampleId :

PB168269BL

Tgt Ion:188 Resp: 1133741

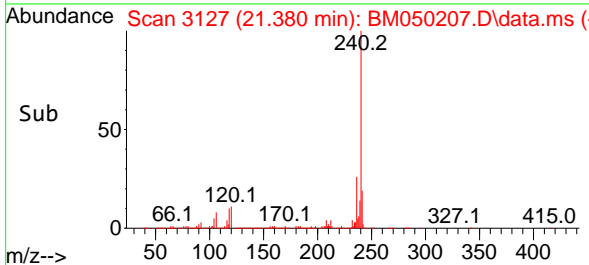
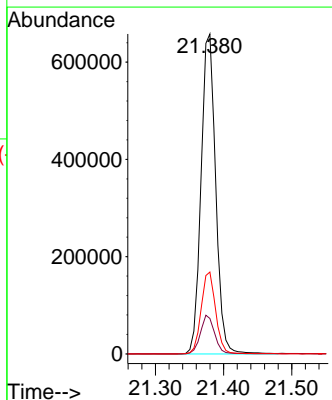
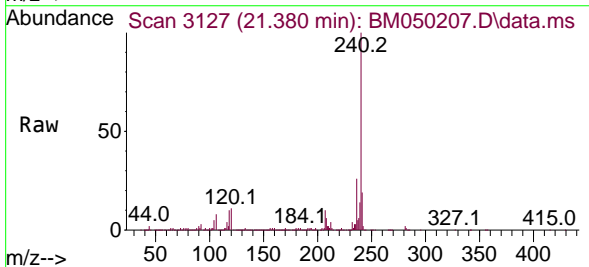
Ion	Ratio	Lower	Upper
188	100		
94	9.6	8.1	12.1
80	10.4	8.6	13.0

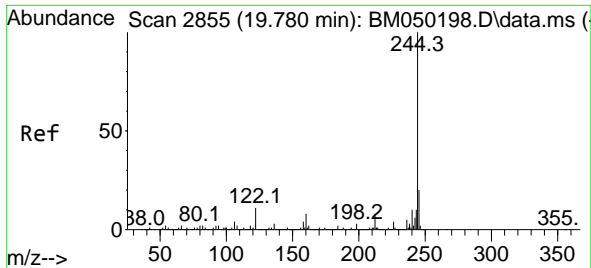


#76
 Chrysene-d12
 Concen: 20.000 ng
 RT: 21.380 min Scan# 3127
 Delta R.T. -0.006 min
 Lab File: BM050207.D
 Acq: 06 Jun 2025 10:08

Tgt Ion:240 Resp: 982238

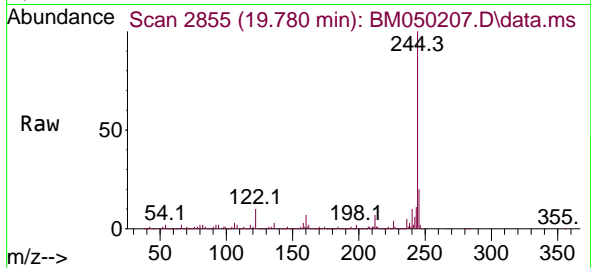
Ion	Ratio	Lower	Upper
240	100		
120	11.1	9.0	13.4
236	25.6	20.7	31.1



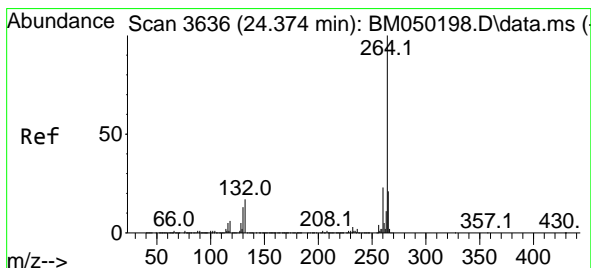
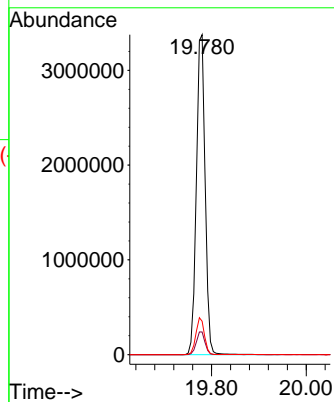
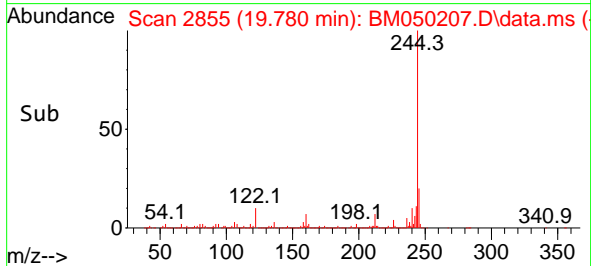


#79
 Terphenyl-d14
 Concen: 83.660 ng
 RT: 19.780 min Scan# 28
 Delta R.T. -0.006 min
 Lab File: BM050207.D
 Acq: 06 Jun 2025 10:08

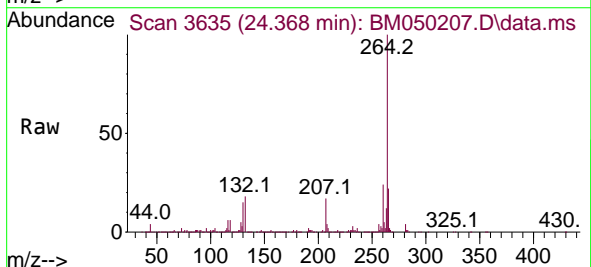
Instrument :
 BNA_M
 ClientSampleId :
 PB168269BL



Tgt Ion:244 Resp: 4336326
 Ion Ratio Lower Upper
 244 100
 212 7.1 6.0 9.0
 122 10.4 8.6 12.8



#86
 Perylene-d12
 Concen: 20.000 ng
 RT: 24.368 min Scan# 3635
 Delta R.T. -0.006 min
 Lab File: BM050207.D
 Acq: 06 Jun 2025 10:08



Tgt Ion:264 Resp: 1022855
 Ion Ratio Lower Upper
 264 100
 260 24.0 18.6 28.0
 265 22.0 16.8 25.2

