

Data Path : Z:\svoasrv\HPCHEM1\BNA_P\Data\BP060925\
 Data File : BP024881.D
 Acq On : 09 Jun 2025 17:35
 Operator : RC/JU
 Sample : Q2230-05
 Misc :
 ALS Vial : 12 Sample Multiplier: 1

Instrument :
 BNA_P
 ClientSampleId :
 GW-MW901-060425

Quant Time: Jun 09 18:16:06 2025
 Quant Method : Z:\svoasrv\HPCHEM1\BNA_P\Methods\8270E-BP060625.M
 Quant Title : ASP BNA STANDARDS FOR 5 POINT CALIBRATION
 QLast Update : Fri Jun 06 16:20:27 2025
 Response via : Initial Calibration

Compound	R.T.	QIon	Response	Conc	Units	Dev(Min)
Internal Standards						
1) 1,4-Dichlorobenzene-d4	7.607	152	269752	20.000	ng	0.00
21) Naphthalene-d8	10.372	136	1068626	20.000	ng	0.00
39) Acenaphthene-d10	14.248	164	664052	20.000	ng	0.00
64) Phenanthrene-d10	17.054	188	1331033	20.000	ng	0.00
76) Chrysene-d12	21.477	240	1566442	20.000	ng	0.00
86) Perylene-d12	24.724	264	1838040	20.000	ng	0.00
System Monitoring Compounds						
5) 2-Fluorophenol	5.237	112	1084815	67.127	ng	0.00
7) Phenol-d6	6.813	99	875177	40.930	ng	0.00
23) Nitrobenzene-d5	8.760	82	1889460	85.918	ng	0.00
42) 2,4,6-Tribromophenol	15.772	330	1453971	158.369	ng	-0.01
45) 2-Fluorobiphenyl	12.854	172	4010432	81.357	ng	0.00
79) Terphenyl-d14	19.783	244	7173932	82.081	ng	-0.01

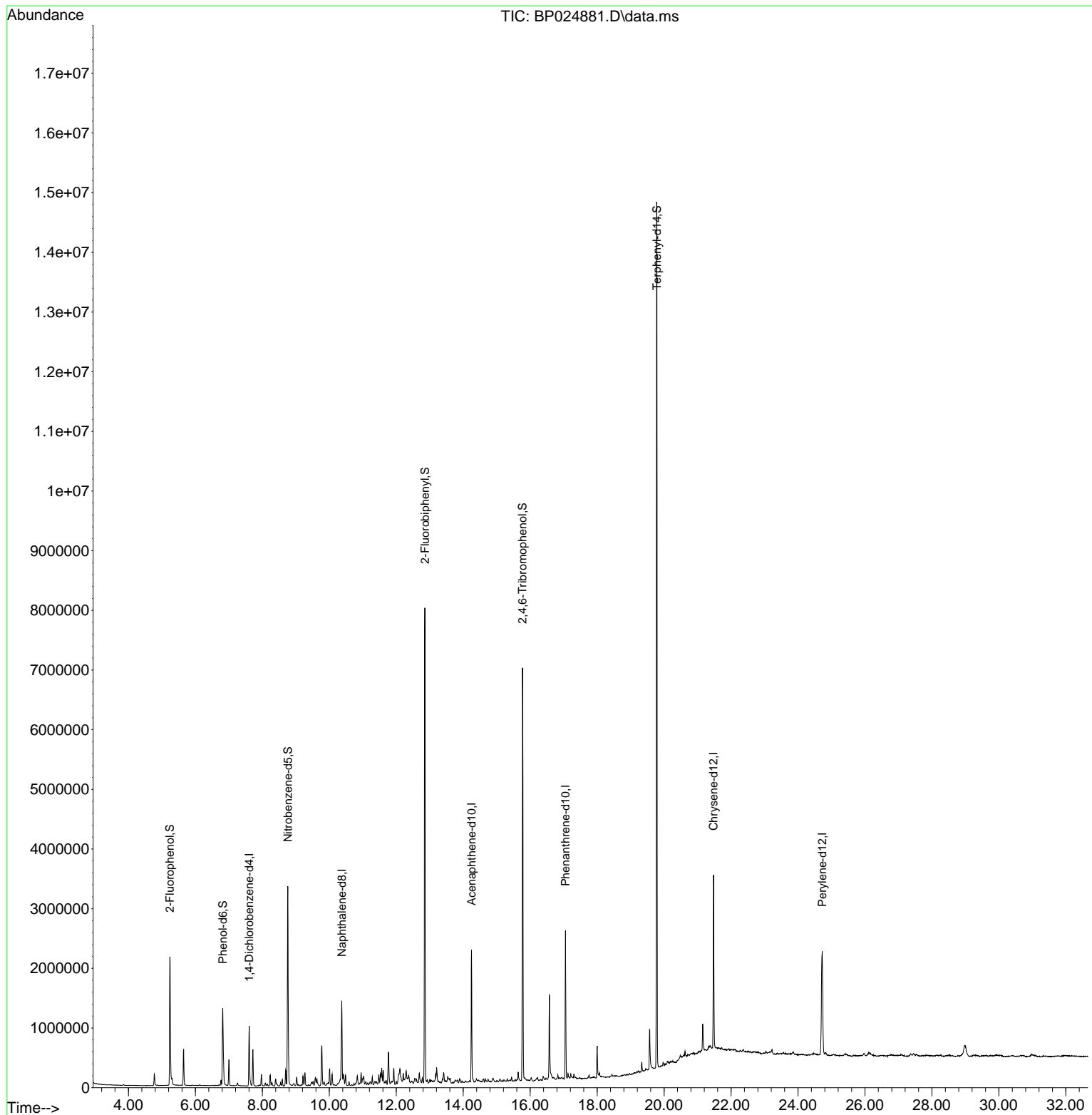
Target Compounds Qvalue

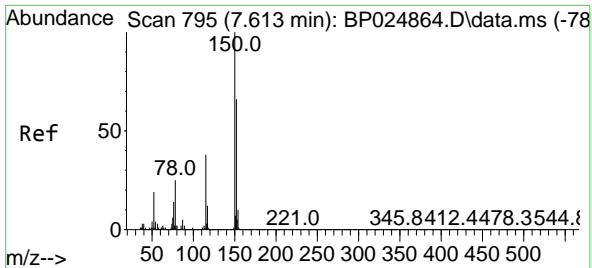
(#) = qualifier out of range (m) = manual integration (+) = signals summed

Data Path : Z:\svoasrv\HPCHEM1\BNA_P\Data\BP060925\
 Data File : BP024881.D
 Acq On : 09 Jun 2025 17:35
 Operator : RC/JU
 Sample : Q2230-05
 Misc :
 ALS Vial : 12 Sample Multiplier: 1

Instrument :
 BNA_P
 ClientSampleId :
 GW-MW901-060425

Quant Time: Jun 09 18:16:06 2025
 Quant Method : Z:\svoasrv\HPCHEM1\BNA_P\Methods\8270E-BP060625.M
 Quant Title : ASP BNA STANDARDS FOR 5 POINT CALIBRATION
 QLast Update : Fri Jun 06 16:20:27 2025
 Response via : Initial Calibration

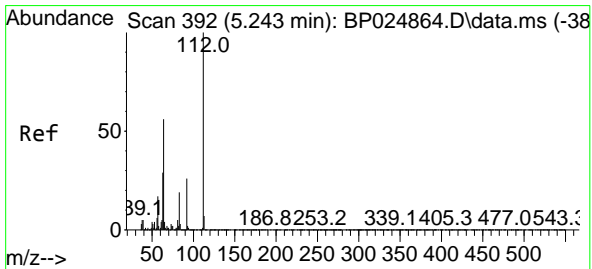
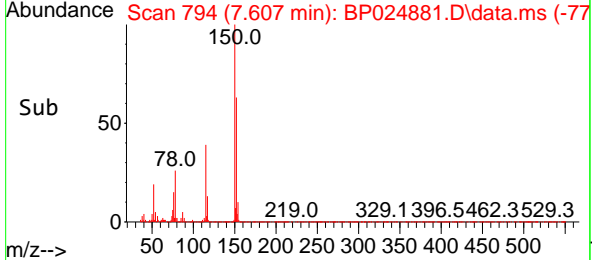
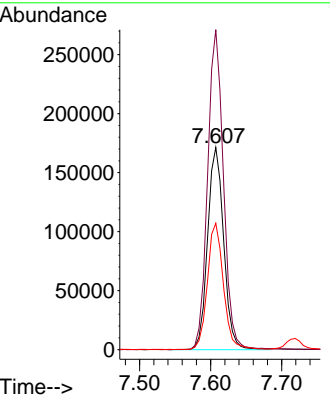
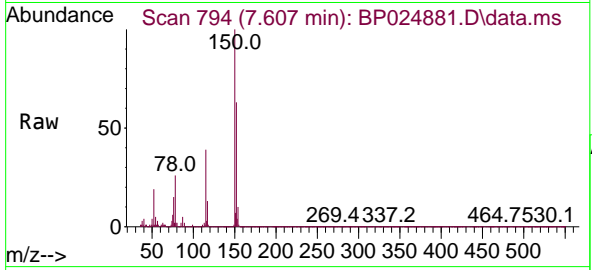




#1
 1,4-Dichlorobenzene-d4
 Concen: 20.000 ng
 RT: 7.607 min Scan# 794
 Delta R.T. -0.006 min
 Lab File: BP024881.D
 Acq: 09 Jun 2025 17:35

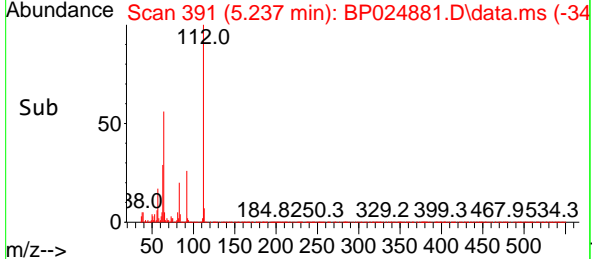
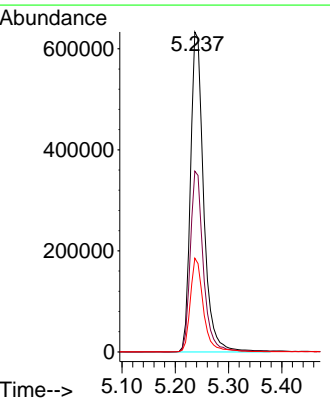
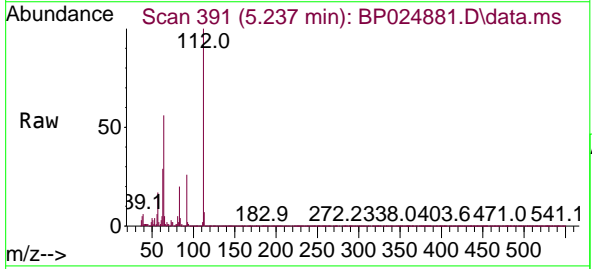
Instrument :
 BNA_P
 ClientSampleId :
 GW-MW901-060425

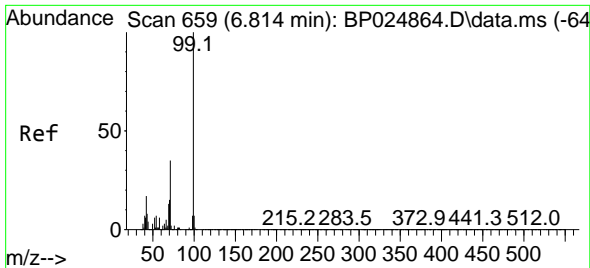
Tgt Ion:152 Resp: 269752
 Ion Ratio Lower Upper
 152 100
 150 158.3 122.1 183.1
 115 62.5 46.4 69.6



#5
 2-Fluorophenol
 Concen: 67.127 ng
 RT: 5.237 min Scan# 391
 Delta R.T. -0.006 min
 Lab File: BP024881.D
 Acq: 09 Jun 2025 17:35

Tgt Ion:112 Resp: 1084815
 Ion Ratio Lower Upper
 112 100
 64 56.5 44.7 67.1
 63 29.3 23.5 35.3



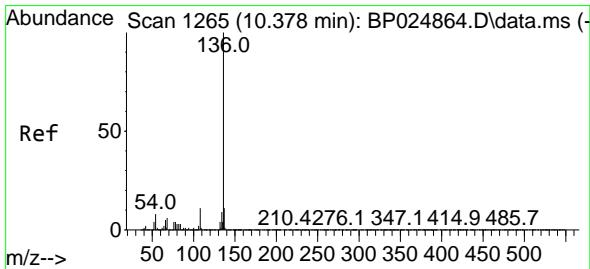
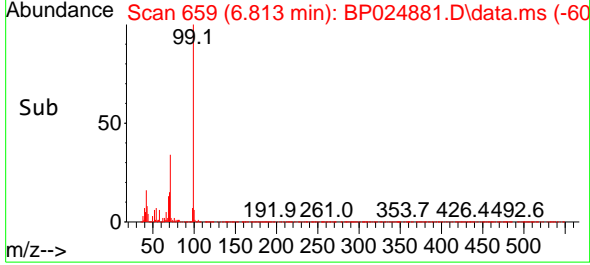
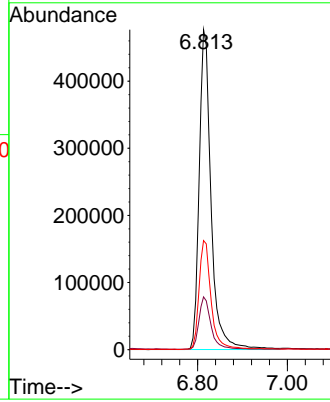
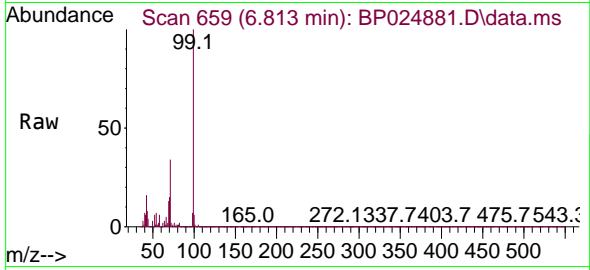


#7
 Phenol-d6
 Concen: 40.930 ng
 RT: 6.813 min Scan# 61
 Delta R.T. -0.000 min
 Lab File: BP024881.D
 Acq: 09 Jun 2025 17:35

Instrument :
 BNA_P
 ClientSampleId :
 GW-MW901-060425

Tgt Ion: 99 Resp: 875177

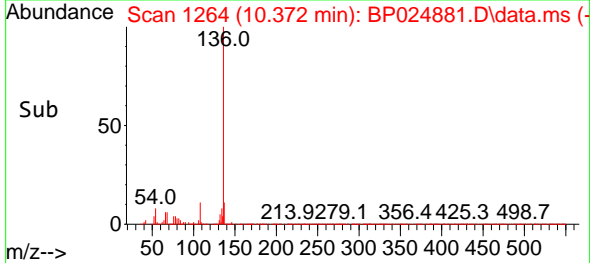
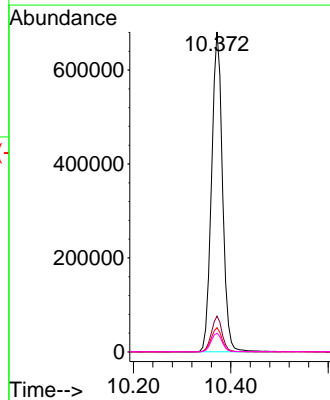
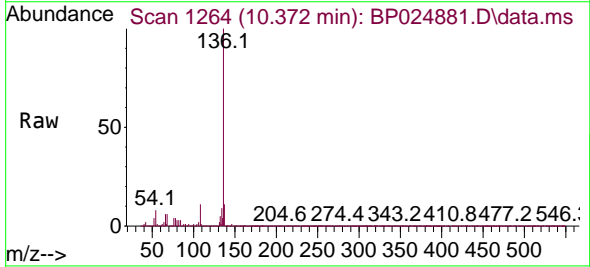
Ion	Ratio	Lower	Upper
99	100		
42	16.5	13.4	20.2
71	34.1	27.6	41.4

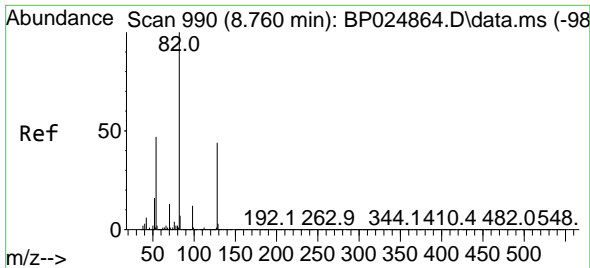


#21
 Naphthalene-d8
 Concen: 20.000 ng
 RT: 10.372 min Scan# 1264
 Delta R.T. -0.006 min
 Lab File: BP024881.D
 Acq: 09 Jun 2025 17:35

Tgt Ion: 136 Resp: 1068626

Ion	Ratio	Lower	Upper
136	100		
137	11.2	8.9	13.3
54	7.6	6.1	9.1
68	5.8	4.6	7.0



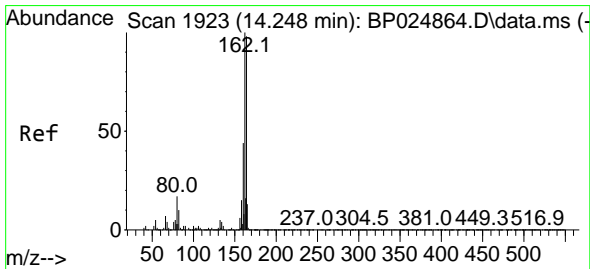
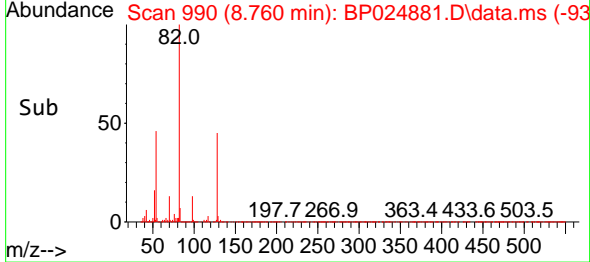
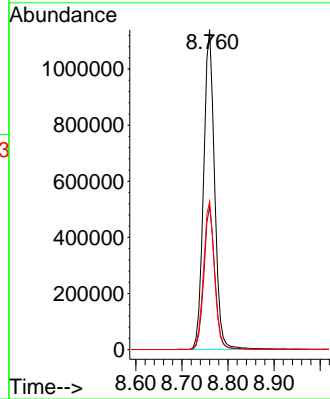
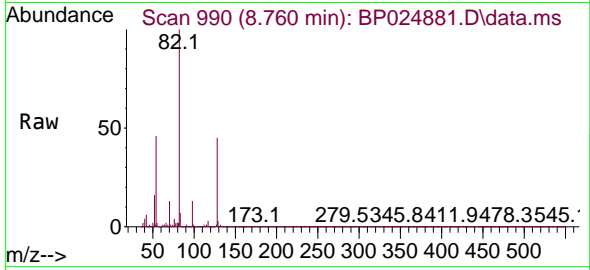


#23
 Nitrobenzene-d5
 Concen: 85.918 ng
 RT: 8.760 min Scan# 990
 Delta R.T. -0.000 min
 Lab File: BP024881.D
 Acq: 09 Jun 2025 17:35

Instrument :
 BNA_P
 ClientSampleId :
 GW-MW901-060425

Tgt Ion: 82 Resp: 1889460

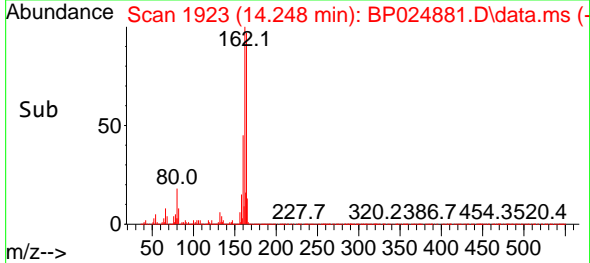
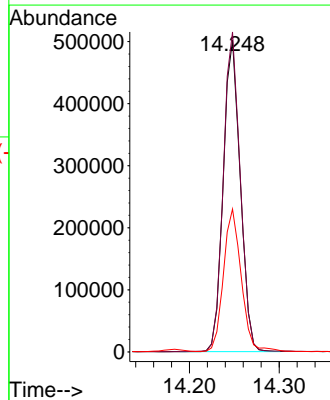
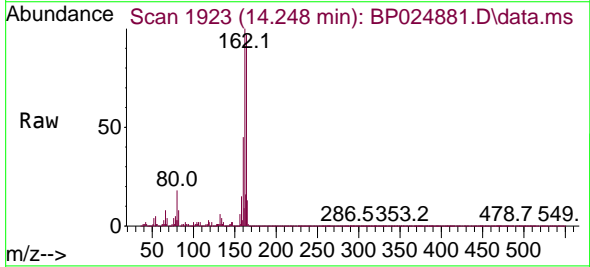
Ion	Ratio	Lower	Upper
82	100		
128	44.7	35.3	52.9
54	46.3	37.4	56.0

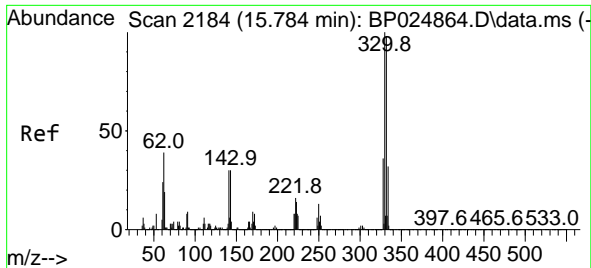


#39
 Acenaphthene-d10
 Concen: 20.000 ng
 RT: 14.248 min Scan# 1923
 Delta R.T. -0.000 min
 Lab File: BP024881.D
 Acq: 09 Jun 2025 17:35

Tgt Ion: 164 Resp: 664052

Ion	Ratio	Lower	Upper
164	100		
162	102.7	81.6	122.4
160	45.8	36.2	54.2



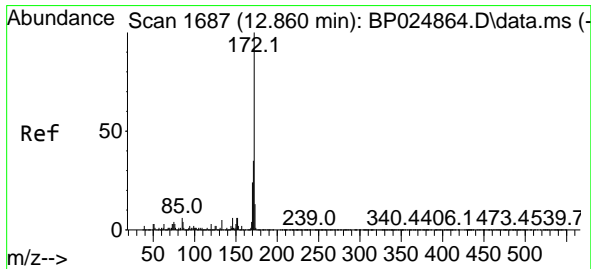
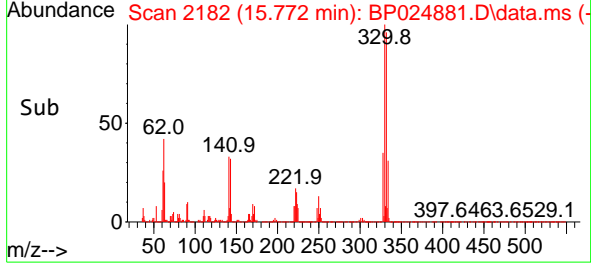
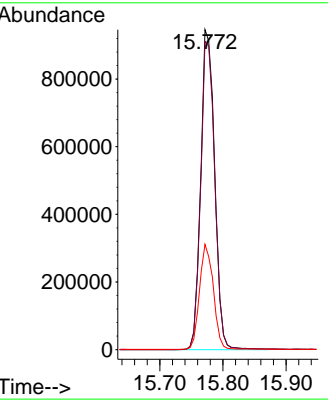
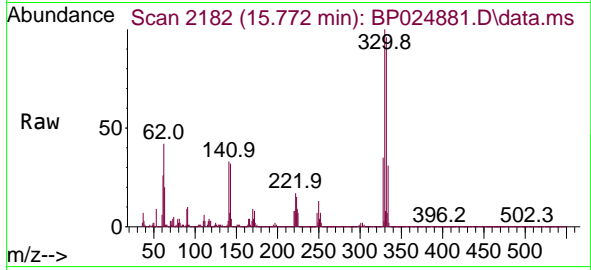


#42
 2,4,6-Tribromophenol
 Concen: 158.369 ng
 RT: 15.772 min Scan# 21
 Delta R.T. -0.012 min
 Lab File: BP024881.D
 Acq: 09 Jun 2025 17:35

Instrument : BNA_P
 ClientSampleId : GW-MW901-060425

Tgt Ion: 330 Resp: 1453971

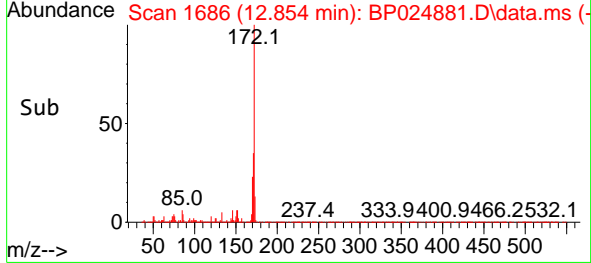
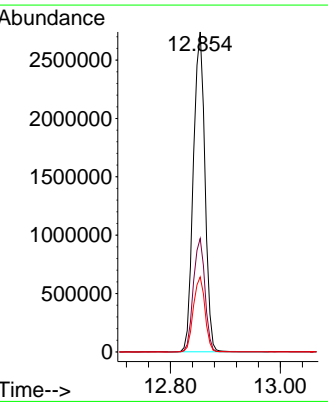
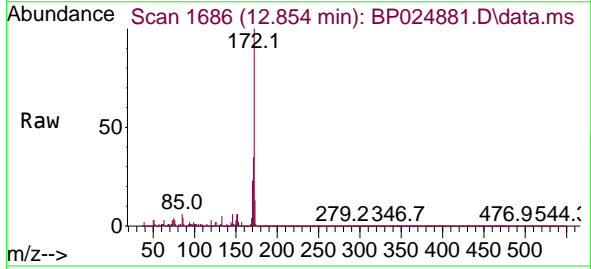
Ion	Ratio	Lower	Upper
330	100		
332	97.1	77.7	116.5
141	32.3	26.4	39.6

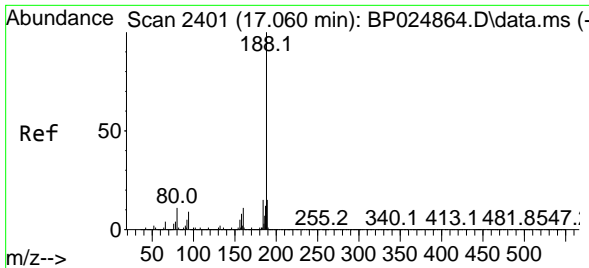


#45
 2-Fluorobiphenyl
 Concen: 81.357 ng
 RT: 12.854 min Scan# 1686
 Delta R.T. -0.006 min
 Lab File: BP024881.D
 Acq: 09 Jun 2025 17:35

Tgt Ion: 172 Resp: 4010432

Ion	Ratio	Lower	Upper
172	100		
171	35.4	28.3	42.5
170	23.4	19.0	28.4



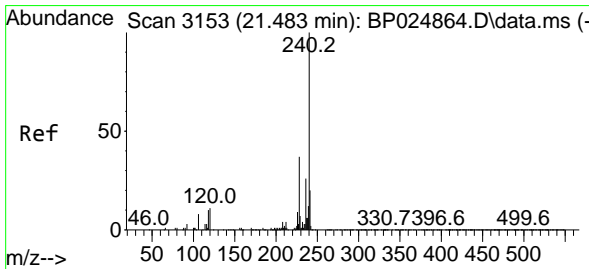
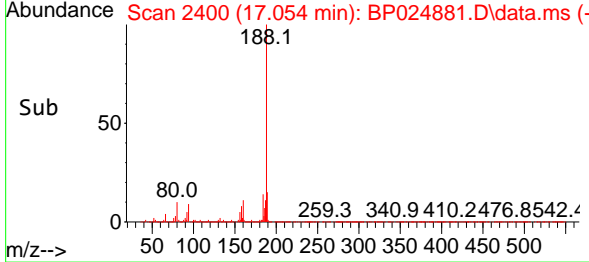
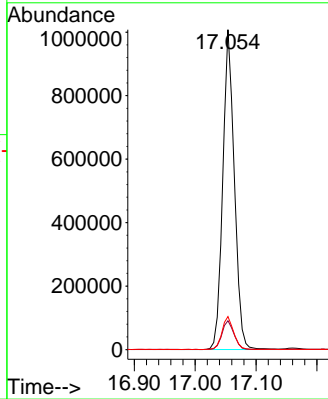
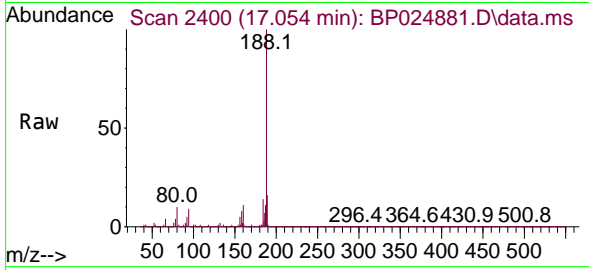


#64
 Phenanthrene-d10
 Concen: 20.000 ng
 RT: 17.054 min Scan# 24
 Delta R.T. -0.006 min
 Lab File: BP024881.D
 Acq: 09 Jun 2025 17:35

Instrument :
 BNA_P
 ClientSampleId :
 GW-MW901-060425

Tgt Ion:188 Resp: 1331033

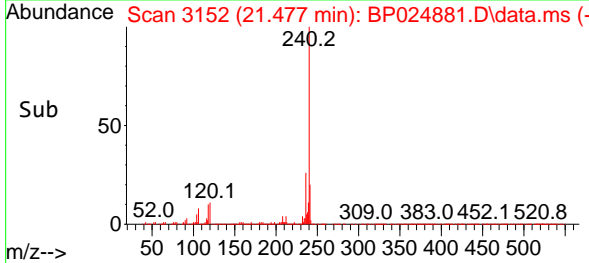
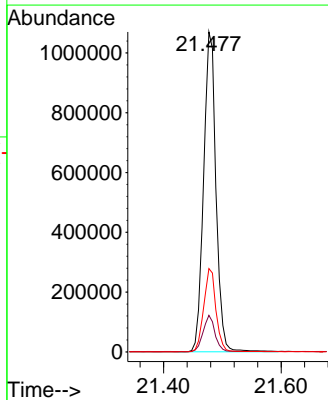
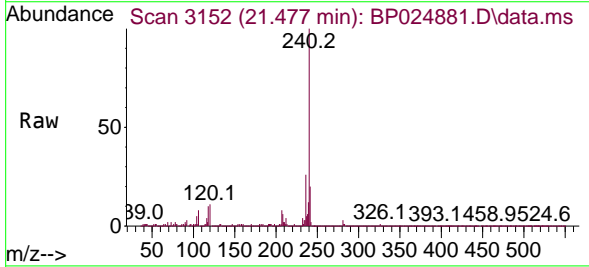
Ion	Ratio	Lower	Upper
188	100		
94	9.0	7.3	10.9
80	10.3	8.5	12.7

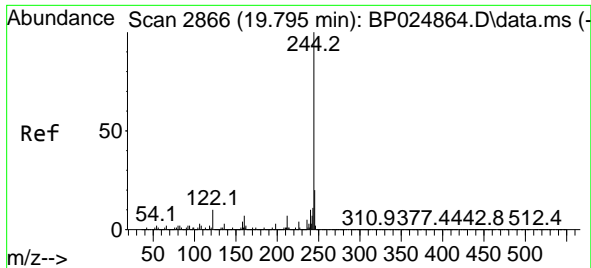


#76
 Chrysene-d12
 Concen: 20.000 ng
 RT: 21.477 min Scan# 3152
 Delta R.T. -0.006 min
 Lab File: BP024881.D
 Acq: 09 Jun 2025 17:35

Tgt Ion:240 Resp: 1566442

Ion	Ratio	Lower	Upper
240	100		
120	11.4	8.9	13.3
236	26.0	20.9	31.3



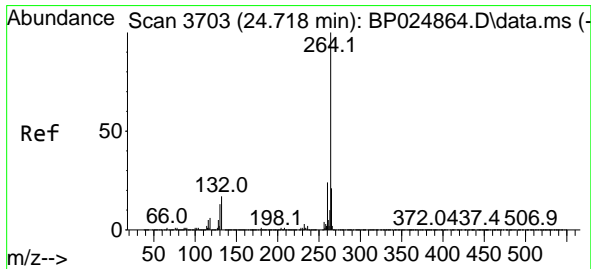
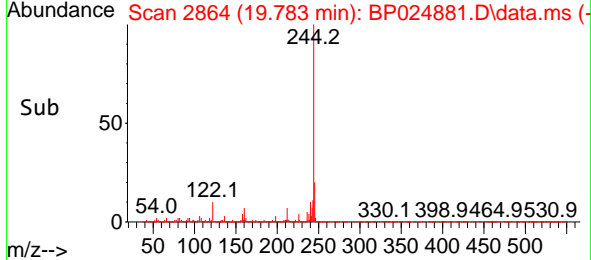
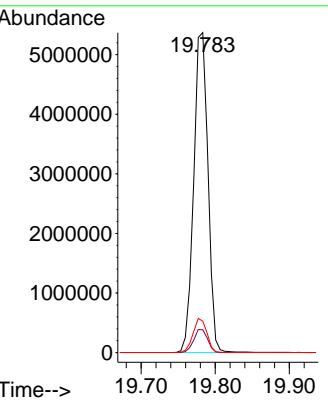
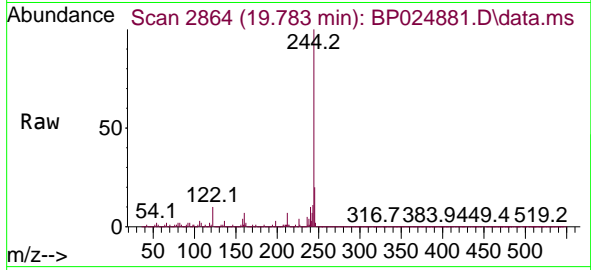


#79
 Terphenyl-d14
 Concen: 82.081 ng
 RT: 19.783 min Scan# 2864
 Delta R.T. -0.012 min
 Lab File: BP024881.D
 Acq: 09 Jun 2025 17:35

Instrument : BNA_P
 ClientSampleId : GW-MW901-060425

Tgt Ion:244 Resp: 7173932

Ion	Ratio	Lower	Upper
244	100		
212	7.1	5.6	8.4
122	9.8	7.7	11.5



#86
 Perylene-d12
 Concen: 20.000 ng
 RT: 24.724 min Scan# 3704
 Delta R.T. 0.006 min
 Lab File: BP024881.D
 Acq: 09 Jun 2025 17:35

Tgt Ion:264 Resp: 1838040

Ion	Ratio	Lower	Upper
264	100		
260	23.9	19.0	28.4
265	22.0	17.4	26.0

