

Data Path : Z:\pestpcbsrv\HPCHEM1\ECD_0\Data\P0060625\
 Data File : P0111521.D
 Signal(s) : Signal #1: ECD1A.ch Signal #2: ECD2B.ch
 Acq On : 06 Jun 2025 13:53
 Operator : YP/AJ
 Sample : Q2236-10
 Misc :
 ALS Vial : 11 Sample Multiplier: 1

Instrument :
 ECD_0
ClientSampleId :
 WC-A2-05-C

Manual Integrations
APPROVED
 Reviewed By :Yogesh Patel 06/09/2025
 Supervised By :mohammad ahmed 06/10/2025

Integration File signal 1: autoint1.e
 Integration File signal 2: autoint2.e
 Quant Time: Jun 06 14:18:20 2025
 Quant Method : Z:\pestpcbsrv\HPCHEM1\ECD_0\methods\P0051525.M
 Quant Title : GC EXTRACTABLES
 QLast Update : Thu May 15 07:11:53 2025
 Response via : Initial Calibration
 Integrator: ChemStation

Volume Inj. : 2 µl
 Signal #1 Phase : ZB-MR1 Signal #2 Phase: ZB-MR2
 Signal #1 Info : 30Mx0.32mmx 0.50µ Signal #2 Info : 30M x 0.32mm x 0.25µm

Compound	RT#1	RT#2	Resp#1	Resp#2	ng/ml	ng/ml

System Monitoring Compounds						
1) SA Tetrachlo...	3.679	3.675	87976923	81532614	14.954m	14.956m
2) SA Decachlor...	8.716	8.666	49735373	17985809	9.633	9.721

Target Compounds

(f)=RT Delta > 1/2 Window (#)=Amounts differ by > 25% (m)=manual int.

Data Path : Z:\pestpcbsrv\HPCHEM1\ECD_0\Data\P0060625\
 Data File : P0111521.D
 Signal(s) : Signal #1: ECD1A.ch Signal #2: ECD2B.ch
 Acq On : 06 Jun 2025 13:53
 Operator : YP/AJ
 Sample : Q2236-10
 Misc :
 ALS Vial : 11 Sample Multiplier: 1

Instrument :

ECD_0

ClientSampleId :

WC-A2-05-C

Manual Integrations

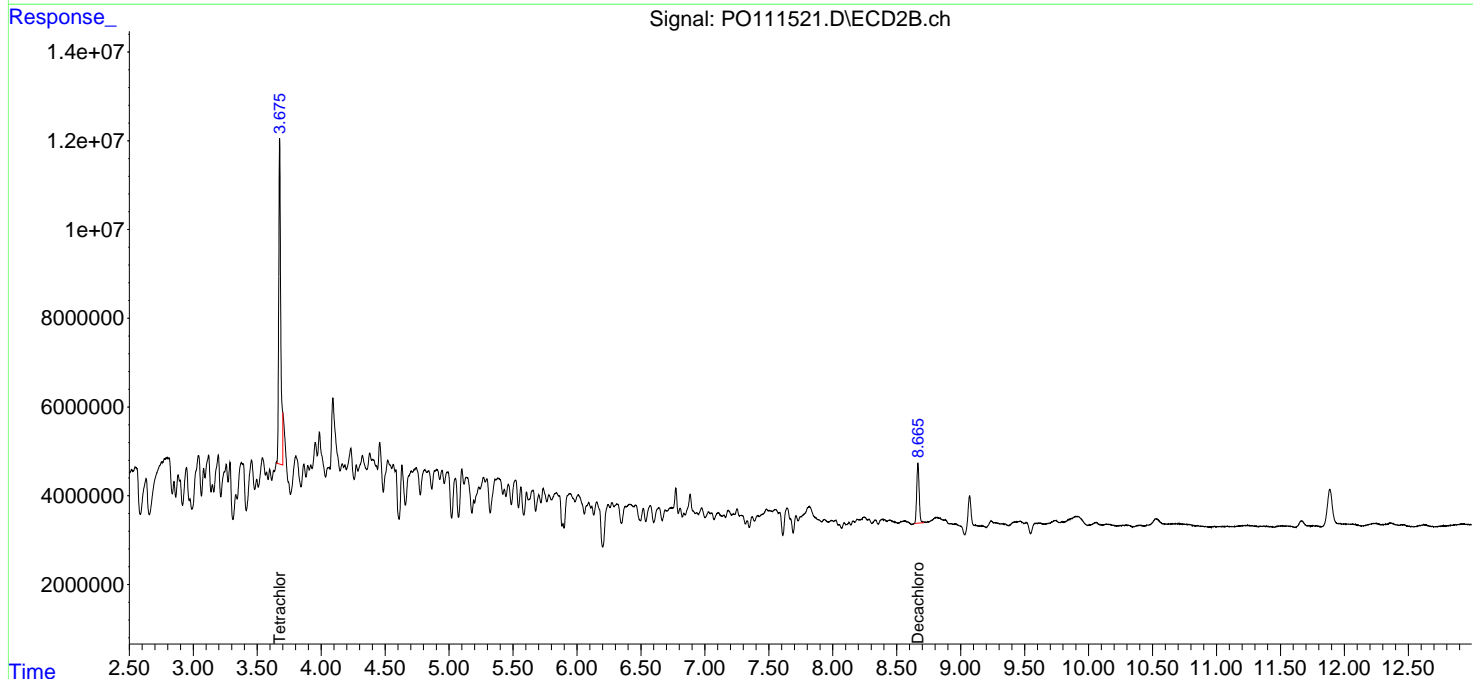
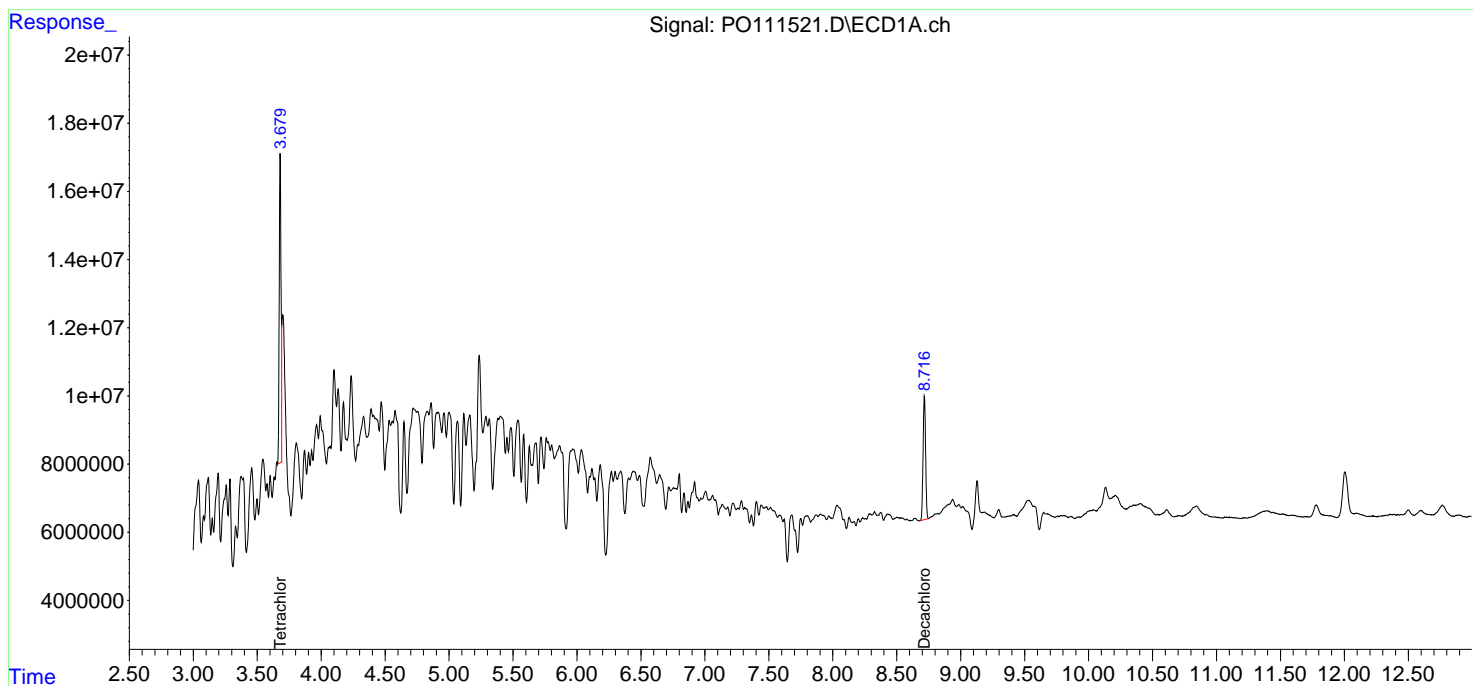
APPROVED

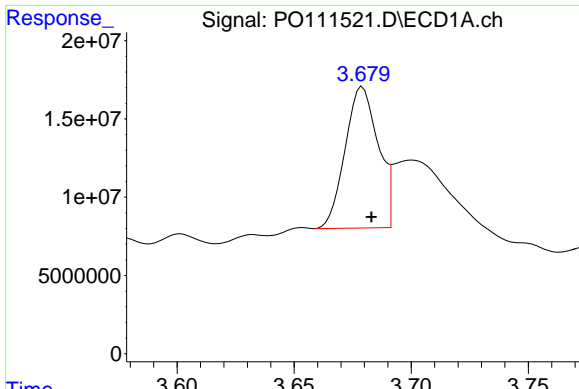
Reviewed By :Yogesh Patel 06/09/2025

Supervised By :mohammad ahmed 06/10/2025

Integration File signal 1: autoint1.e
 Integration File signal 2: autoint2.e
 Quant Time: Jun 06 14:18:20 2025
 Quant Method : Z:\pestpcbsrv\HPCHEM1\ECD_0\methods\P0051525.M
 Quant Title : GC EXTRACTABLES
 QLast Update : Thu May 15 07:11:53 2025
 Response via : Initial Calibration
 Integrator: ChemStation

Volume Inj. : 2 µl
 Signal #1 Phase : ZB-MR1 Signal #2 Phase: ZB-MR2
 Signal #1 Info : 30Mx0.32mmx 0.50µ Signal #2 Info : 30M x 0.32mm x 0.25µm

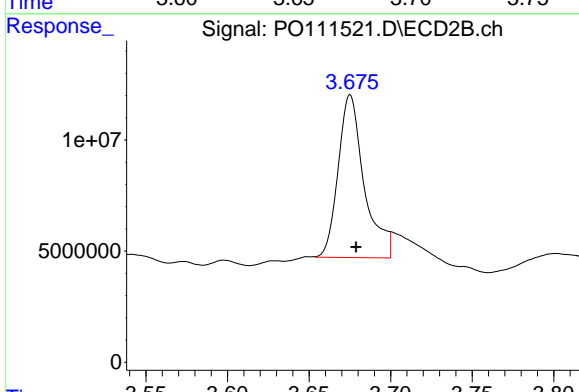




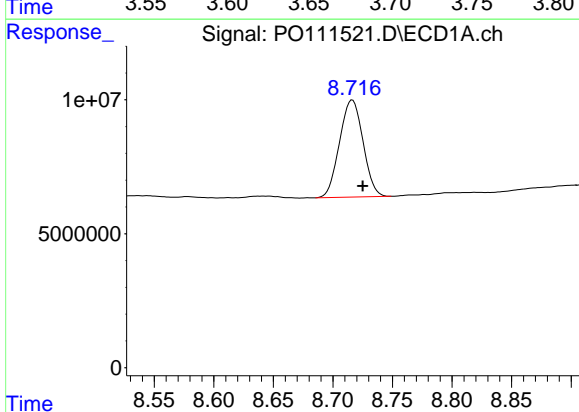
#1 Tetrachloro-m-xylene
 R.T.: 3.679 min
 Delta R.T.: -0.004 min
 Response: 87976923
 Conc: 14.95 ng/ml

Instrument :
 ECD_O
 ClientSampleId :
 WC-A2-05-C

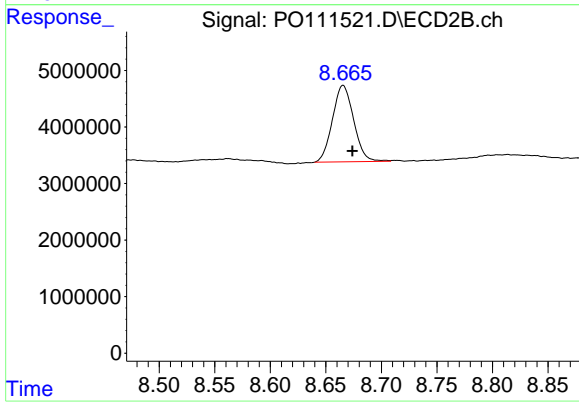
Manual Integrations
APPROVED
 Reviewed By :Yogesh Patel 06/09/2025
 Supervised By :mohammad ahmed 06/10/2025



#1 Tetrachloro-m-xylene
 R.T.: 3.675 min
 Delta R.T.: -0.004 min
 Response: 81532614
 Conc: 14.96 ng/ml m



#2 Decachlorobiphenyl
 R.T.: 8.716 min
 Delta R.T.: -0.009 min
 Response: 49735373
 Conc: 9.63 ng/ml



#2 Decachlorobiphenyl
 R.T.: 8.666 min
 Delta R.T.: -0.009 min
 Response: 17985809
 Conc: 9.72 ng/ml