

Data Path : Z:\pestpcbsrv\HPCHEM1\ECD_0\Data\P0060625\
 Data File : P0111522.D
 Signal(s) : Signal #1: ECD1A.ch Signal #2: ECD2B.ch
 Acq On : 06 Jun 2025 14:12
 Operator : YP/AJ
 Sample : Q2236-14
 Misc :
 ALS Vial : 12 Sample Multiplier: 1

Instrument :
 ECD_0
ClientSampleId :
 WC-A2-06-C

Manual Integrations
APPROVED

Reviewed By :Yogesh Patel 06/09/2025
 Supervised By :mohammad ahmed 06/10/2025

Integration File signal 1: autoint1.e
 Integration File signal 2: autoint2.e
 Quant Time: Jun 06 15:57:33 2025
 Quant Method : Z:\pestpcbsrv\HPCHEM1\ECD_0\methods\P0051525.M
 Quant Title : GC EXTRACTABLES
 QLast Update : Thu May 15 07:11:53 2025
 Response via : Initial Calibration
 Integrator: ChemStation

Volume Inj. : 2 µl
 Signal #1 Phase : ZB-MR1 Signal #2 Phase: ZB-MR2
 Signal #1 Info : 30Mx0.32mmx 0.50µ Signal #2 Info : 30M x 0.32mm x 0.25µm

Compound	RT#1	RT#2	Resp#1	Resp#2	ng/ml	ng/ml

System Monitoring Compounds						
1) SA Tetrachlo...	3.679	3.675	120.2E6	115.7E6	20.427m	21.228m
2) SA Decachlor...	8.716	8.666	84480729	29616109	16.363	16.007m

Target Compounds

(f)=RT Delta > 1/2 Window (#)=Amounts differ by > 25% (m)=manual int.

Data Path : Z:\pestpcbsrv\HPCHEM1\ECD_O\Data\P0060625\
 Data File : P0111522.D
 Signal(s) : Signal #1: ECD1A.ch Signal #2: ECD2B.ch
 Acq On : 06 Jun 2025 14:12
 Operator : YP/AJ
 Sample : Q2236-14
 Misc :
 ALS Vial : 12 Sample Multiplier: 1

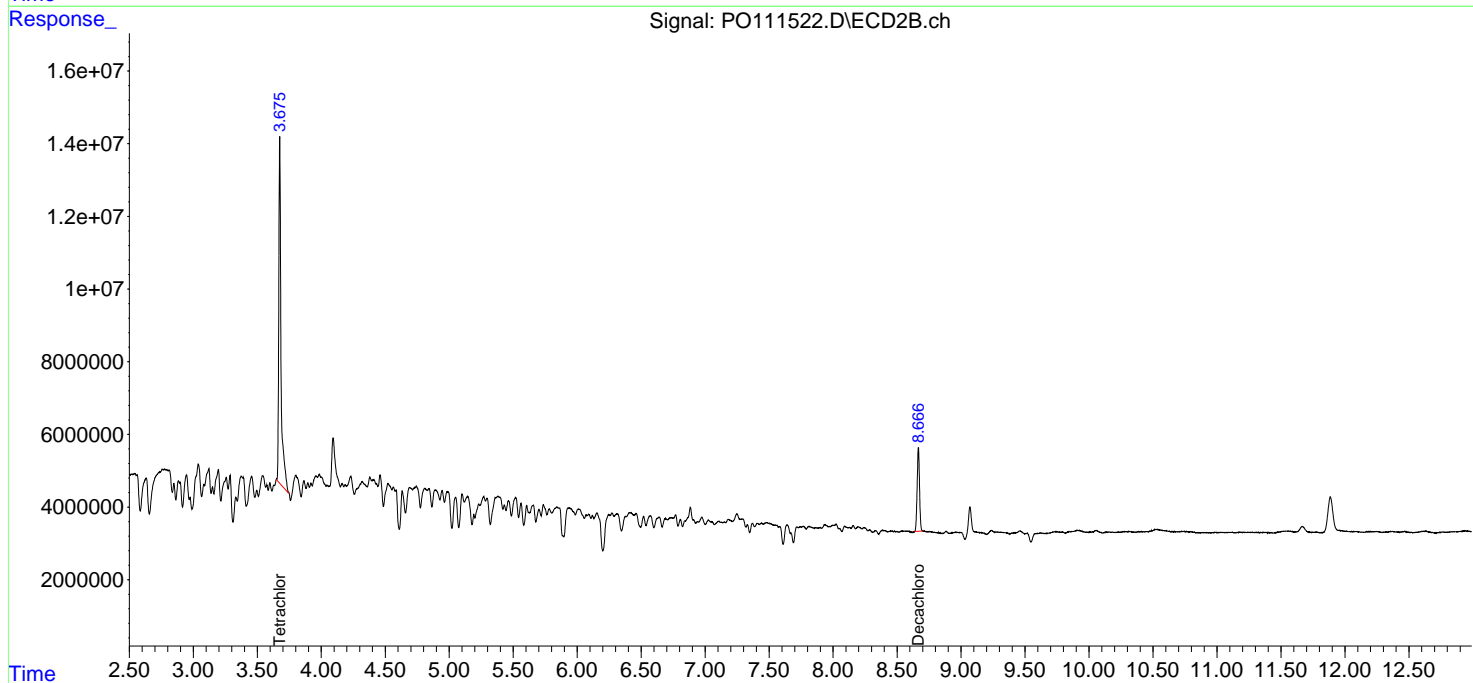
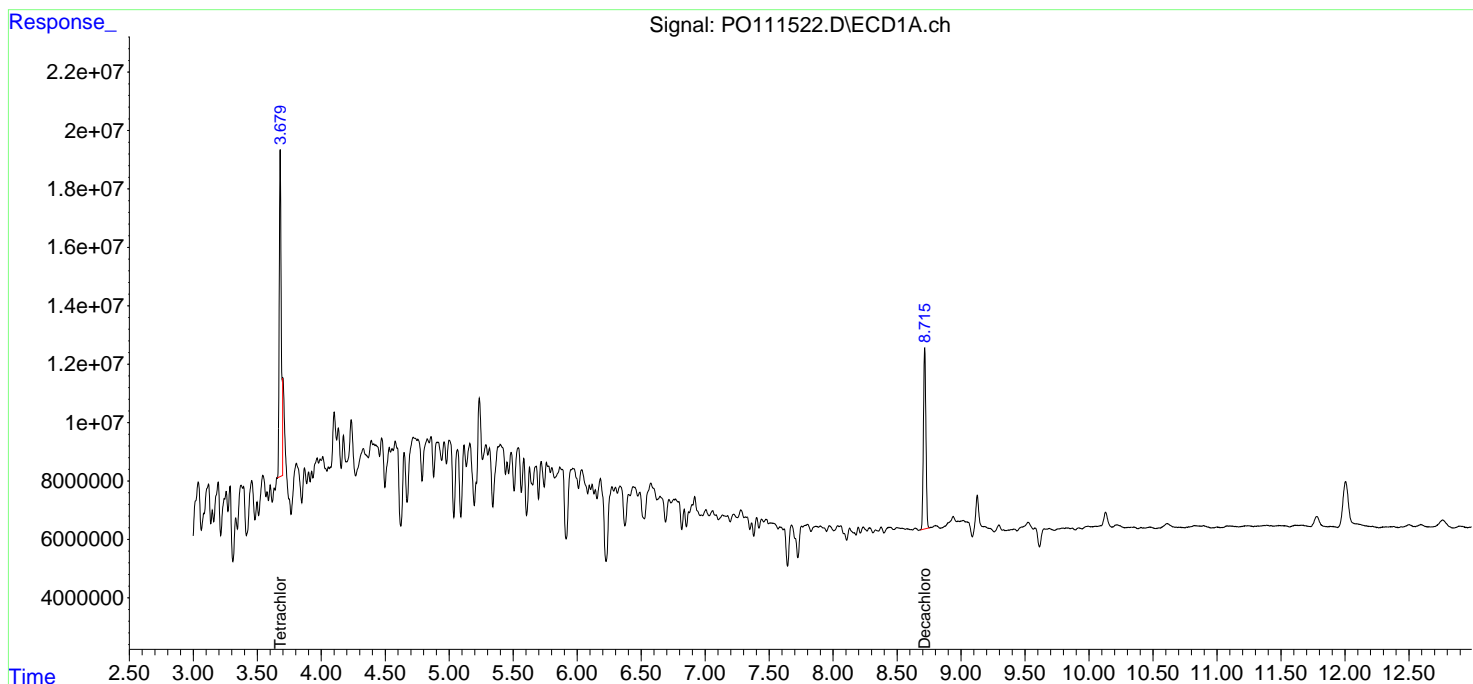
Instrument :
 ECD_O
 ClientSampleId :
 WC-A2-06-C

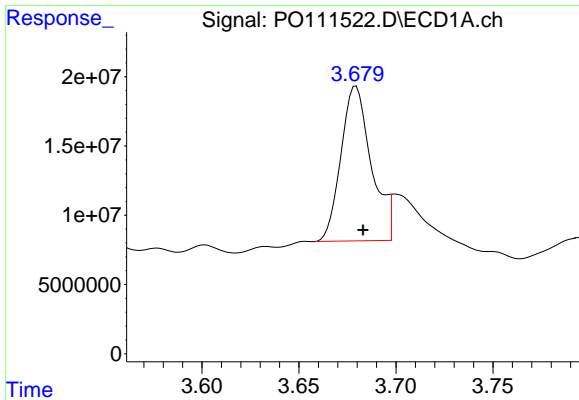
Manual Integrations
APPROVED

Reviewed By :Yogesh Patel 06/09/2025
 Supervised By :mohammad ahmed 06/10/2025

Integration File signal 1: autoint1.e
 Integration File signal 2: autoint2.e
 Quant Time: Jun 06 15:57:33 2025
 Quant Method : Z:\pestpcbsrv\HPCHEM1\ECD_O\methods\P0051525.M
 Quant Title : GC EXTRACTABLES
 QLast Update : Thu May 15 07:11:53 2025
 Response via : Initial Calibration
 Integrator: ChemStation

Volume Inj. : 2 µl
 Signal #1 Phase : ZB-MR1 Signal #2 Phase: ZB-MR2
 Signal #1 Info : 30Mx0.32mmx 0.50µ Signal #2 Info : 30M x 0.32mm x 0.25µm



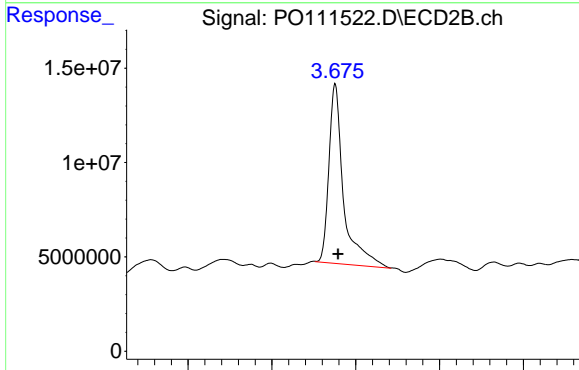


#1 Tetrachloro-m-xylene
 R.T.: 3.679 min
 Delta R.T.: -0.004 min
 Response: 120173825
 Conc: 20.43 ng/ml

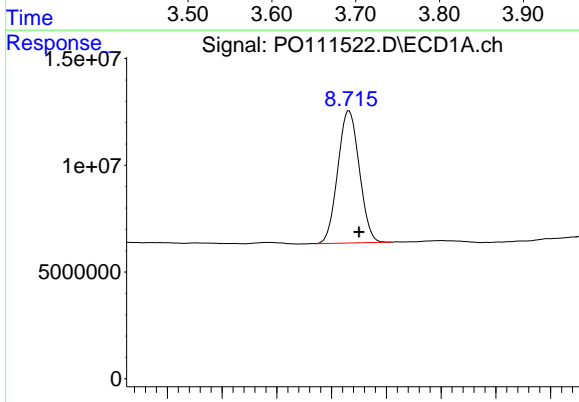
Instrument :
 ECD_O
 ClientSampleId :
 WC-A2-06-C

Manual Integrations
 APPROVED

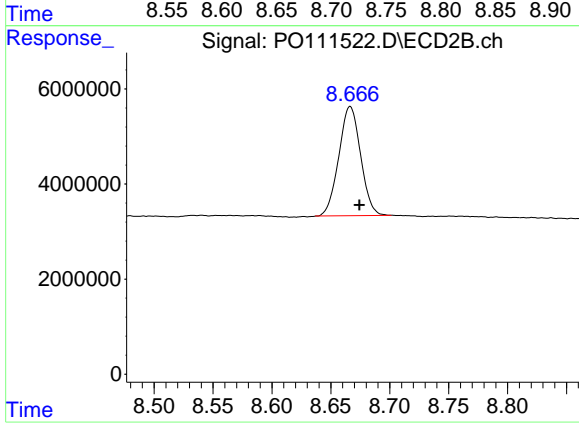
Reviewed By :Yogesh Patel 06/09/2025
 Supervised By :mohammad ahmed 06/10/2025



#1 Tetrachloro-m-xylene
 R.T.: 3.675 min
 Delta R.T.: -0.004 min
 Response: 115723508
 Conc: 21.23 ng/ml m



#2 Decachlorobiphenyl
 R.T.: 8.716 min
 Delta R.T.: -0.009 min
 Response: 84480729
 Conc: 16.36 ng/ml



#2 Decachlorobiphenyl
 R.T.: 8.666 min
 Delta R.T.: -0.008 min
 Response: 29616109
 Conc: 16.01 ng/ml m