

Data Path : Z:\voasrv\HPCHEM1\MSVOA_N\Data\VN061225\
 Data File : VN086989.D
 Acq On : 12 Jun 2025 19:41
 Operator : JC\MD
 Sample : Q2268-07
 Misc : 5.0mL/MSVOA_N/WATER
 ALS Vial : 24 Sample Multiplier: 1

Instrument :
 MSVOA_N
 ClientSampleId :
 MW-6-20250605

Integration Parameters: RTEINT.P
 Integrator: RTE
 Smoothing : ON
 Sampling : 1
 Start Thrs : 0.2
 Stop Thrs : 0
 Filtering: 5
 Min Area: 3 % of largest Peak
 Max Peaks: 100
 Peak Location: TOP

If leading or trailing edge < 100 prefer < Baseline drop else tangent >
 Peak separation: 5

Method : Z:\voasrv\HPCHEM1\MSVOA_N\methods\82N060625W.M
 Title : SW846 8260

Signal : TIC: VN086989.D\data.ms

peak #	R.T. min	first scan	max scan	last scan	PK TY	peak height	corr. area	corr. % max.	% of total
1	3.283	215	226	240	rBV	460225	1128131	1.97%	0.649%
2	5.406	573	587	615	rVB6	179914	1059646	1.85%	0.610%
3	5.830	643	659	678	rBV3	235062	897063	1.57%	0.516%
4	7.342	906	916	936	rVB	225246	693123	1.21%	0.399%
5	8.236	1062	1068	1080	rVB3	304665	953920	1.67%	0.549%
6	8.618	1120	1133	1146	rBV	5294679	12510703	21.87%	7.202%
7	8.783	1146	1161	1170	rVB	1021055	2833789	4.95%	1.631%
8	9.106	1207	1216	1229	rBV	462617	1055569	1.85%	0.608%
9	9.606	1280	1301	1317	rBV3	294606	964926	1.69%	0.555%
10	10.571	1457	1465	1469	rBV	729961	1334610	2.33%	0.768%
11	10.635	1469	1476	1484	rVV	3687189	6933990	12.12%	3.992%
12	11.865	1677	1685	1691	rBV	553713	1046448	1.83%	0.602%
13	11.965	1695	1702	1711	rVV	8841073	15224400	26.61%	8.764%
14	12.071	1711	1720	1738	rVB	28133230	57211618	100.00%	32.934%
15	12.400	1764	1776	1790	rVB	13097512	22363208	39.09%	12.873%
16	12.694	1820	1826	1834	rVB	415195	679304	1.19%	0.391%
17	12.847	1846	1852	1863	rBV	389800	706114	1.23%	0.406%
18	13.035	1878	1884	1888	rBV	470513	749189	1.31%	0.431%
19	13.094	1888	1894	1898	rVV	3420788	6005325	10.50%	3.457%
20	13.129	1898	1900	1904	rVV	1621199	2222745	3.89%	1.280%
21	13.171	1904	1907	1917	rVB	1623257	2555569	4.47%	1.471%
22	13.335	1928	1935	1947	rBV	2360205	3881486	6.78%	2.234%
23	13.482	1952	1960	1967	rBV	7586237	12335327	21.56%	7.101%
24	13.818	2006	2017	2033	rBV2	2289165	4653999	8.13%	2.679%
25	13.994	2041	2047	2062	rVB2	2476986	5249100	9.17%	3.022%
26	14.176	2072	2078	2084	rBV2	394534	700432	1.22%	0.403%
27	14.241	2084	2089	2092	rVV	366798	627070	1.10%	0.361%
28	14.329	2099	2104	2110	rVB	567127	884786	1.55%	0.509%
29	14.441	2118	2123	2132	rVB2	538383	944044	1.65%	0.543%
30	14.653	2152	2159	2162	rBV	422527	685474	1.20%	0.395%
31	14.694	2162	2166	2170	rVB	502510	757225	1.32%	0.436%
32	14.923	2200	2205	2211	rBV	354707	603724	1.06%	0.348%
33	15.047	2217	2226	2232	rBV2	561037	1294962	2.26%	0.745%
34	15.635	2313	2326	2337	rBV	972584	1968370	3.44%	1.133%

Sum of corrected areas: 173715389

Instrument :

MSVOA_N

ClientSampleId :

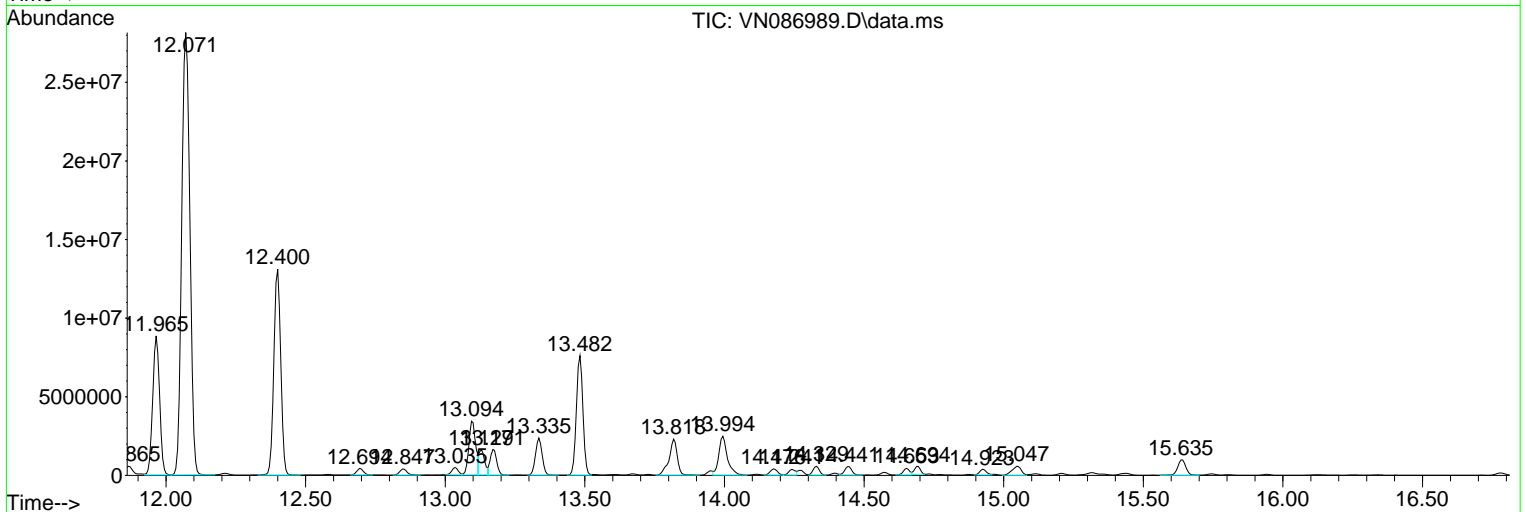
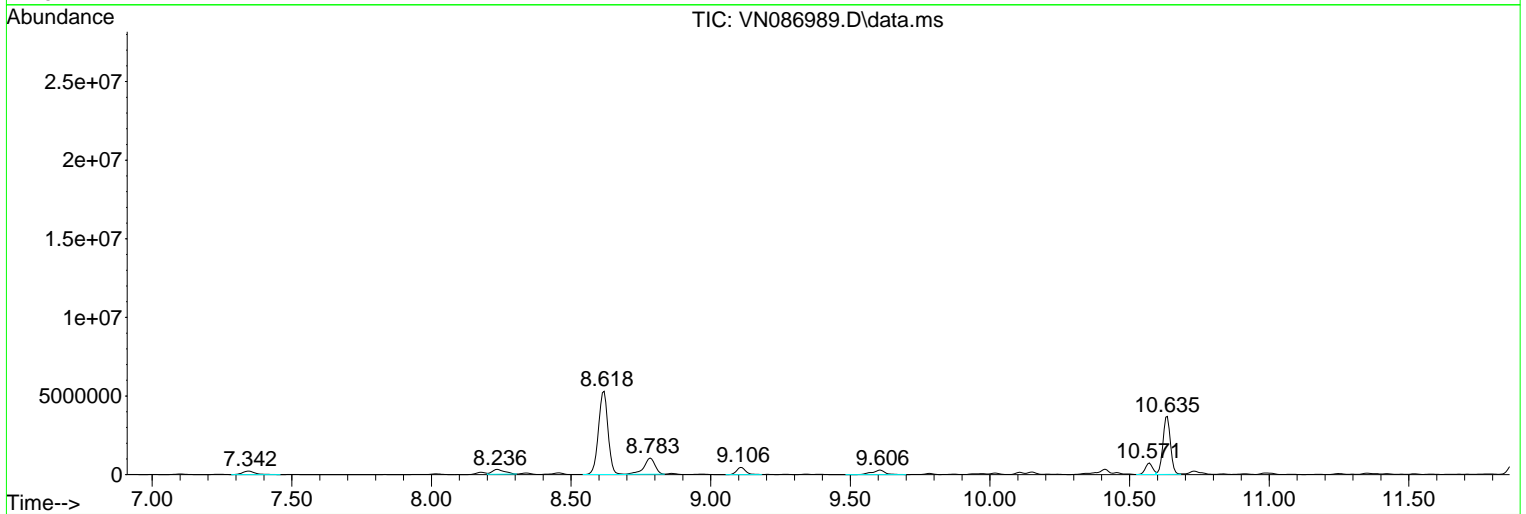
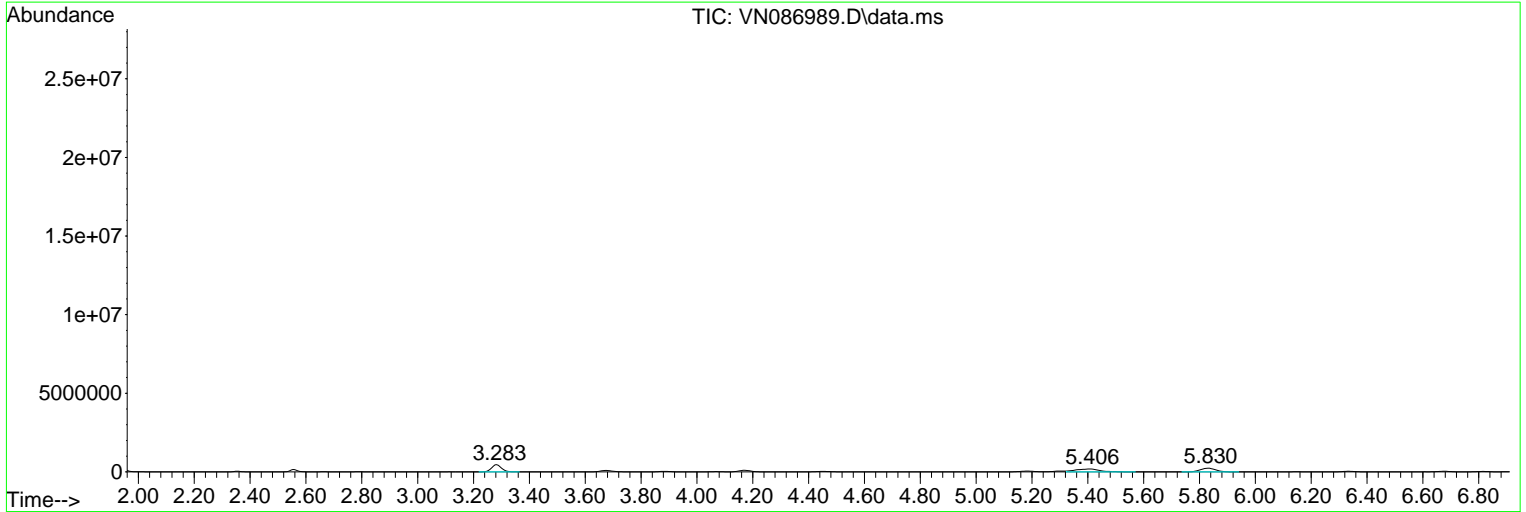
MW-6-20250605

Data Path : Z:\voasrv\HPCHEM1\MSVOA_N\Data\VN061225\
 Data File : VN086989.D
 Acq On : 12 Jun 2025 19:41
 Operator : JC\MD
 Sample : Q2268-07
 Misc : 5.0mL/MSVOA_N/WATER
 ALS Vial : 24 Sample Multiplier: 1

Instrument :
 MSVOA_N
 ClientSampleId :
 MW-6-20250605

Quant Method : Z:\voasrv\HPCHEM1\MSVOA_N\methods\82N060625W.M
 Quant Title : SW846 8260

TIC Library : C:\Database\NIST20.L
 TIC Integration Parameters: LSCINT.P



Data Path : Z:\voasrv\HPCHEM1\MSVOA_N\Data\VN061225\
 Data File : VN086989.D
 Acq On : 12 Jun 2025 19:41
 Operator : JC\MD
 Sample : Q2268-07
 Misc : 5.0mL/MSVOA_N/WATER
 ALS Vial : 24 Sample Multiplier: 1

Instrument :
 MSVOA_N
 ClientSampleId :
 MW-6-20250605

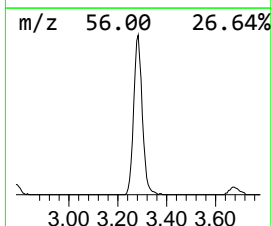
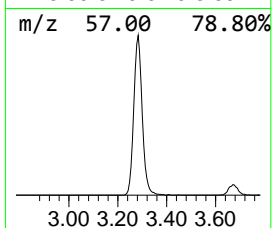
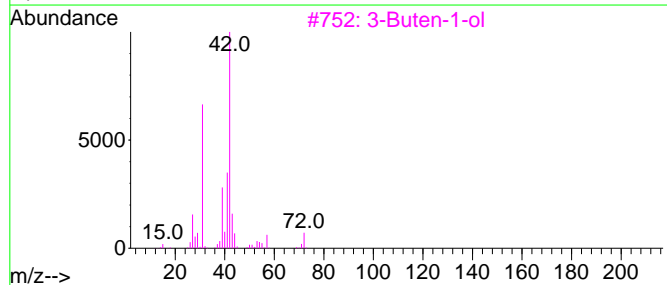
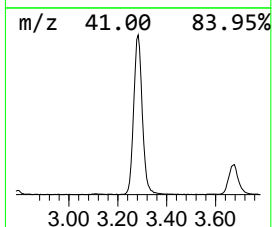
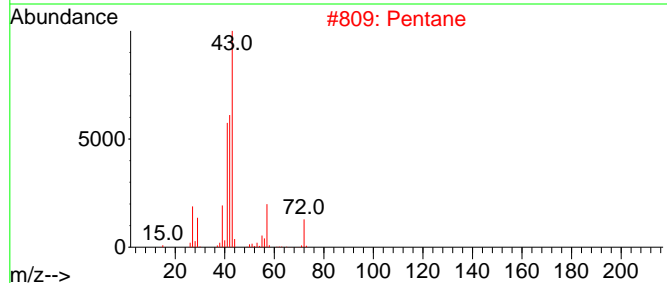
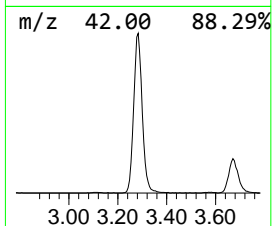
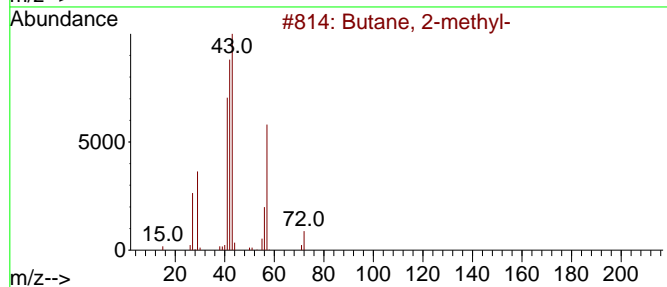
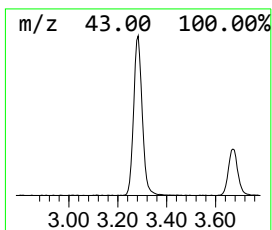
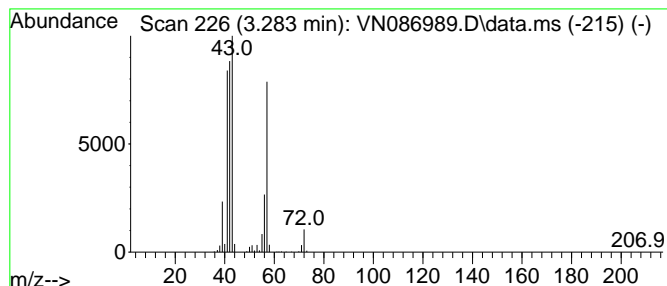
Quant Method : Z:\voasrv\HPCHEM1\MSVOA_N\methods\82N060625W.M
 Quant Title : SW846 8260

TIC Library : C:\Database\NIST20.L
 TIC Integration Parameters: LSCINT.P

 Peak Number 1 Butane, 2-methyl- Concentration Rank 3

R.T.	EstConc	Area	Relative to ISTD	R.T.
3.283	59.13 ug/l	1128130	Pentafluorobenzene	8.230

Hit#	of	5	Tentative ID	MW	MolForm	CAS#	Qual
1			Butane, 2-methyl-	72	C5H12	000078-78-4	91
2			Pentane	72	C5H12	000109-66-0	46
3			3-Buten-1-ol	72	C4H8O	000627-27-0	43
4			1-Butanesulfonyl chloride	156	C4H9ClO2S	002386-60-9	12
5			Butane, 1-chloro-2-methyl-	106	C5H11Cl	000616-13-7	10



Data Path : Z:\voasrv\HPCHEM1\MSVOA_N\Data\VN061225\
 Data File : VN086989.D
 Acq On : 12 Jun 2025 19:41
 Operator : JC\MD
 Sample : Q2268-07
 Misc : 5.0mL/MSVOA_N/WATER
 ALS Vial : 24 Sample Multiplier: 1

Instrument :
 MSVOA_N
 ClientSampleId :
 MW-6-20250605

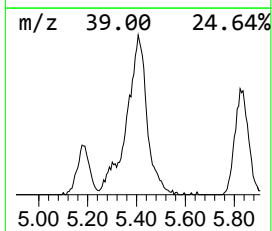
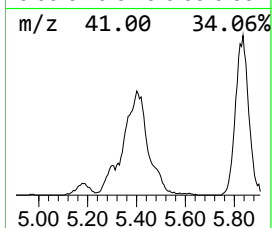
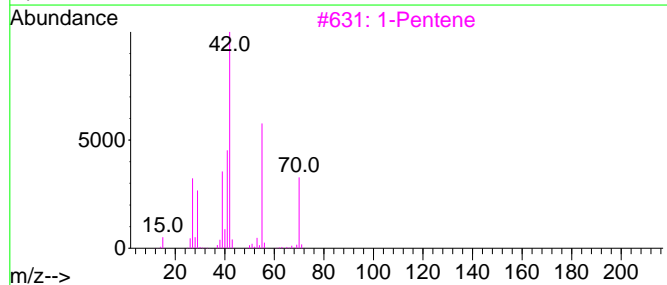
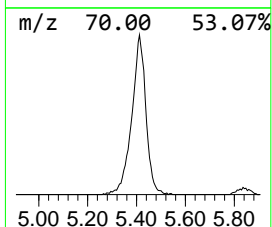
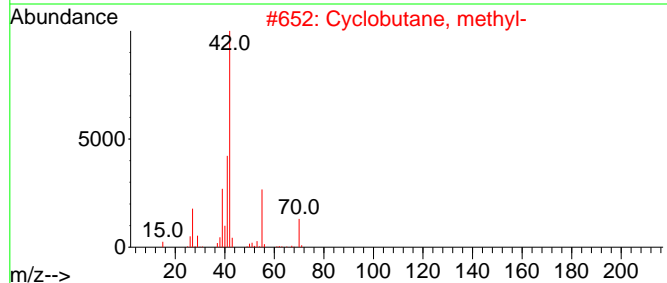
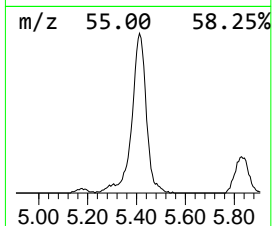
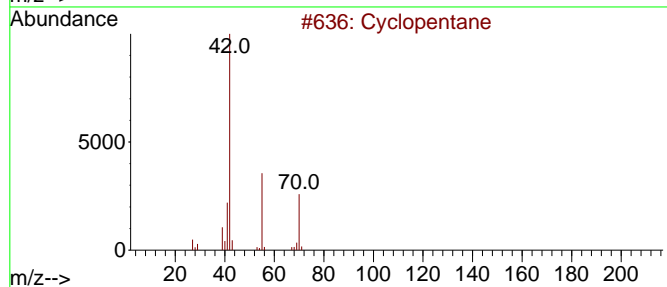
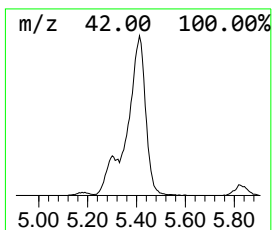
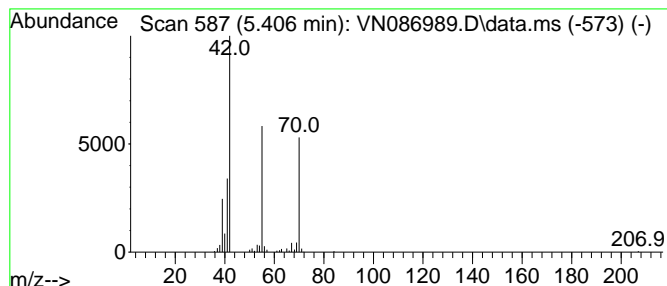
Quant Method : Z:\voasrv\HPCHEM1\MSVOA_N\methods\82N060625W.M
 Quant Title : SW846 8260

TIC Library : C:\Database\NIST20.L
 TIC Integration Parameters: LSCINT.P

 Peak Number 2 Cyclopentane Concentration Rank 5

R.T.	EstConc	Area	Relative to ISTD	R.T.
5.406	55.54 ug/l	1059650	Pentafluorobenzene	8.230

Hit#	of 5	Tentative ID	MW	MolForm	CAS#	Qual
1		Cyclopentane	70	C5H10	000287-92-3	86
2		Cyclobutane, methyl-	70	C5H10	000598-61-8	80
3		1-Pentene	70	C5H10	000109-67-1	64
4		Formic acid, pentyl ester	116	C6H12O2	000638-49-3	56
5		2-Pentene, (Z)-	70	C5H10	000627-20-3	47



Data Path : Z:\voasrv\HPCHEM1\MSVOA_N\Data\VN061225\
 Data File : VN086989.D
 Acq On : 12 Jun 2025 19:41
 Operator : JC\MD
 Sample : Q2268-07
 Misc : 5.0mL/MSVOA_N/WATER
 ALS Vial : 24 Sample Multiplier: 1

Instrument :
 MSVOA_N
 ClientSampleId :
 MW-6-20250605

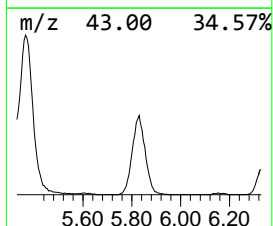
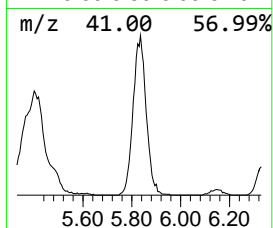
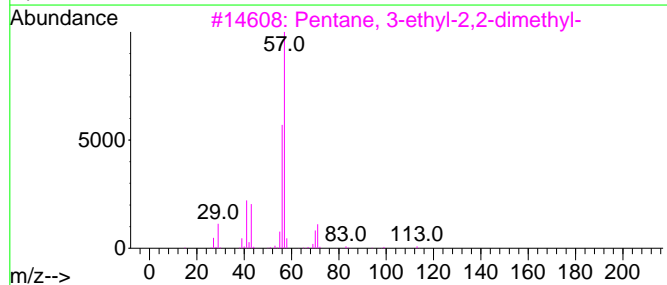
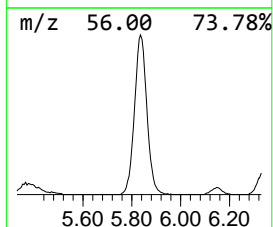
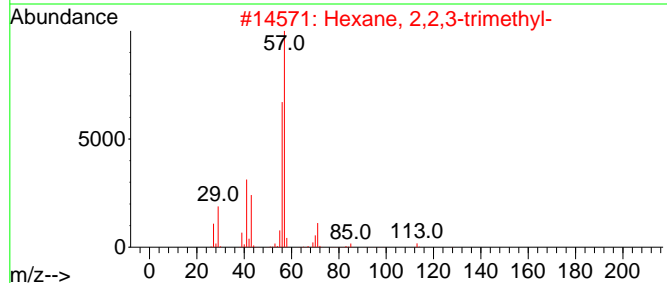
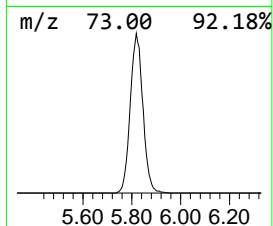
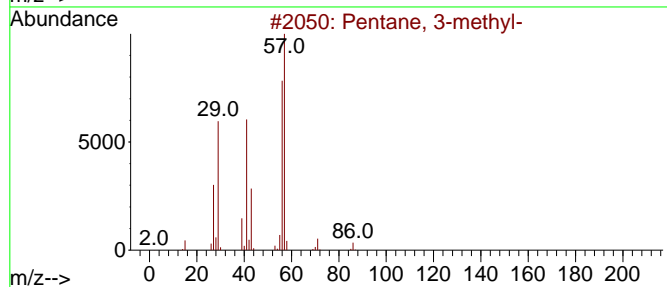
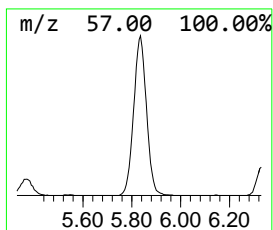
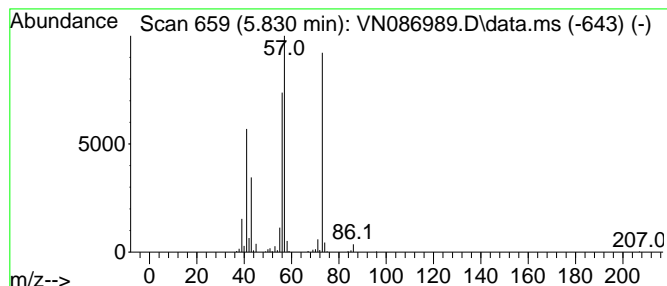
Quant Method : Z:\voasrv\HPCHEM1\MSVOA_N\methods\82N060625W.M
 Quant Title : SW846 8260

TIC Library : C:\Database\NIST20.L
 TIC Integration Parameters: LSCINT.P

 Peak Number 3 Pentane, 3-methyl- Concentration Rank 6

R.T.	EstConc	Area	Relative to ISTD	R.T.
5.830	47.02 ug/l	897063	Pentafluorobenzene	8.230

Hit#	of	5	Tentative ID	MW	MolForm	CAS#	Qual
1			Pentane, 3-methyl-	86	C6H14	000096-14-0	68
2			Hexane, 2,2,3-trimethyl-	128	C9H20	016747-25-4	59
3			Pentane, 3-ethyl-2,2-dimethyl-	128	C9H20	016747-32-3	53
4			3,4-Dimethylidihydrofuran-2,5-dione	128	C6H8O3	007475-92-5	43
5			Pentane, 2,2,3-trimethyl-	114	C8H18	000564-02-3	42



Data Path : Z:\voasrv\HPCHEM1\MSVOA_N\Data\VN061225\
 Data File : VN086989.D
 Acq On : 12 Jun 2025 19:41
 Operator : JC\MD
 Sample : Q2268-07
 Misc : 5.0mL/MSVOA_N/WATER
 ALS Vial : 24 Sample Multiplier: 1

Instrument :
 MSVOA_N
 ClientSampleId :
 MW-6-20250605

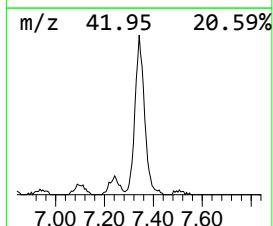
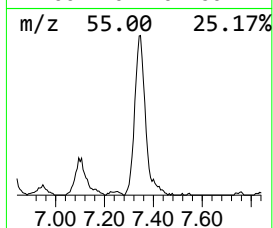
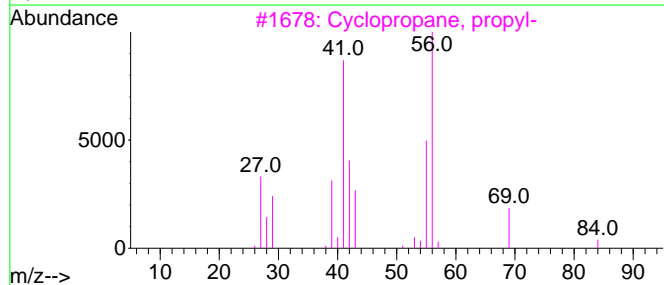
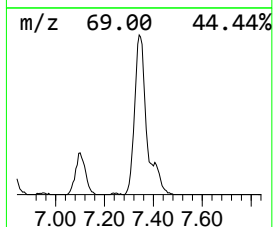
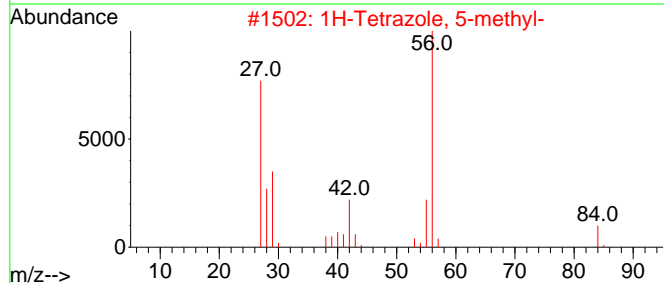
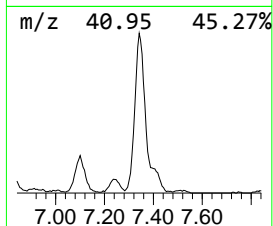
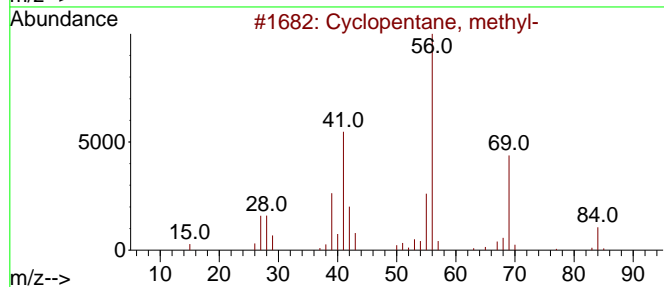
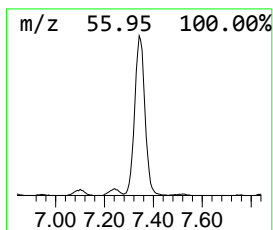
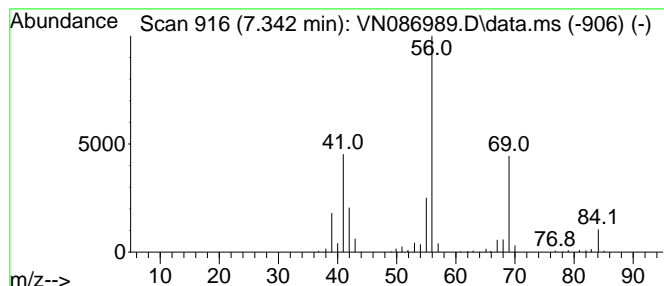
Quant Method : Z:\voasrv\HPCHEM1\MSVOA_N\methods\82N060625W.M
 Quant Title : SW846 8260

TIC Library : C:\Database\NIST20.L
 TIC Integration Parameters: LSCINT.P

 Peak Number 4 Cyclopentane, methyl- Concentration Rank 8

R.T.	EstConc	Area	Relative to ISTD	R.T.
7.342	36.33 ug/l	693123	Pentafluorobenzene	8.230

Hit#	of	Tentative ID	MW	MolForm	CAS#	Qual
1	5	Cyclopentane, methyl-	84	C6H12	000096-37-7	94
2		1H-Tetrazole, 5-methyl-	84	C2H4N4	004076-36-2	80
3		Cyclopropane, propyl-	84	C6H12	002415-72-7	78
4		Cyclobutane, ethyl-	84	C6H12	004806-61-5	64
5		Cyclohexane	84	C6H12	000110-82-7	64



Data Path : Z:\voasrv\HPCHEM1\MSVOA_N\Data\VN061225\
 Data File : VN086989.D
 Acq On : 12 Jun 2025 19:41
 Operator : JC\MD
 Sample : Q2268-07
 Misc : 5.0mL/MSVOA_N/WATER
 ALS Vial : 24 Sample Multiplier: 1

Instrument :
 MSVOA_N
 ClientSampleId :
 MW-6-20250605

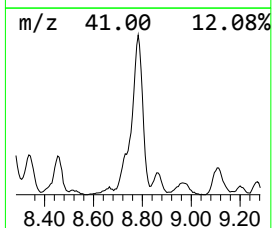
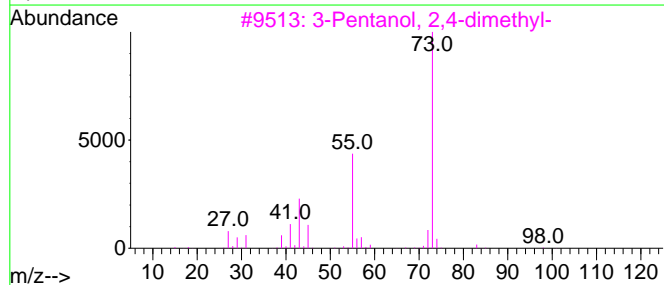
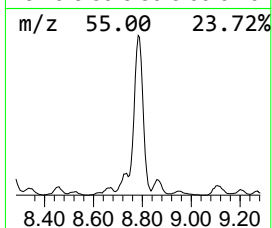
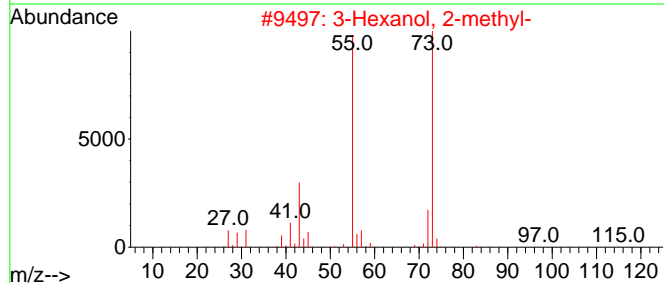
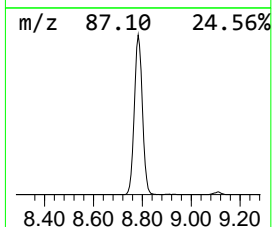
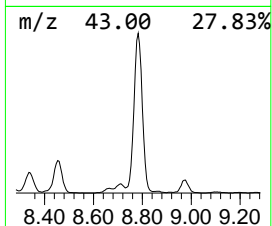
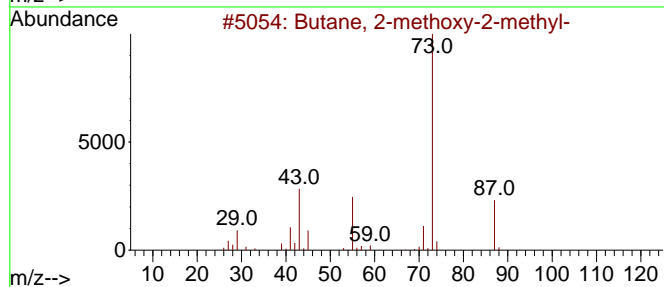
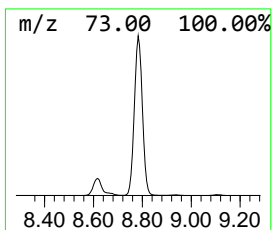
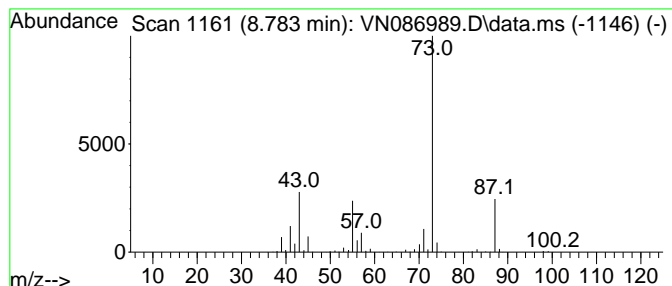
Quant Method : Z:\voasrv\HPCHEM1\MSVOA_N\methods\82N060625W.M
 Quant Title : SW846 8260

TIC Library : C:\Database\NIST20.L
 TIC Integration Parameters: LSCINT.P

 Peak Number 5 Butane, 2-methoxy-2-methyl- Concentration Rank 1

R.T.	EstConc	Area	Relative to ISTD	R.T.
8.783	134.23 ug/l	2833790	1,4-Difluorobenzene	9.106

Hit#	of	5	Tentative ID	MW	MolForm	CAS#	Qual
1			Butane, 2-methoxy-2-methyl-	102	C6H14O	000994-05-8	72
2			3-Hexanol, 2-methyl-	116	C7H16O	000617-29-8	32
3			3-Pentanol, 2,4-dimethyl-	116	C7H16O	000600-36-2	23
4			N-Ethylformamide	73	C3H7NO	000627-45-2	9
5			1,3-Dioxolane, 2-methyl-	88	C4H8O2	000497-26-7	9



Data Path : Z:\voasrv\HPCHEM1\MSVOA_N\Data\VN061225\
 Data File : VN086989.D
 Acq On : 12 Jun 2025 19:41
 Operator : JC\MD
 Sample : Q2268-07
 Misc : 5.0mL/MSVOA_N/WATER
 ALS Vial : 24 Sample Multiplier: 1

Instrument :
 MSVOA_N
 ClientSampleId :
 MW-6-20250605

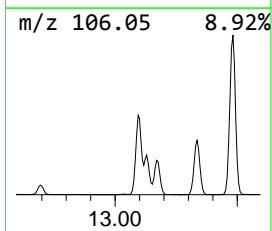
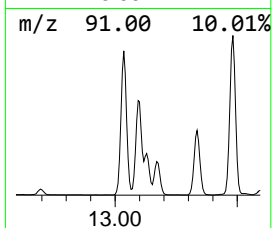
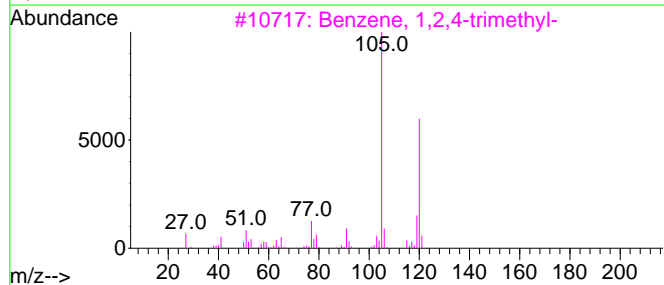
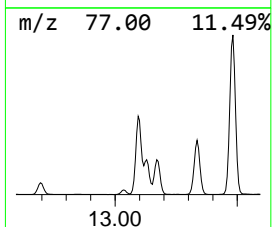
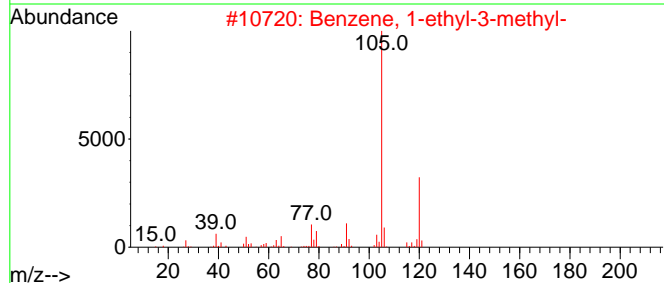
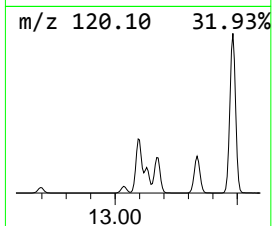
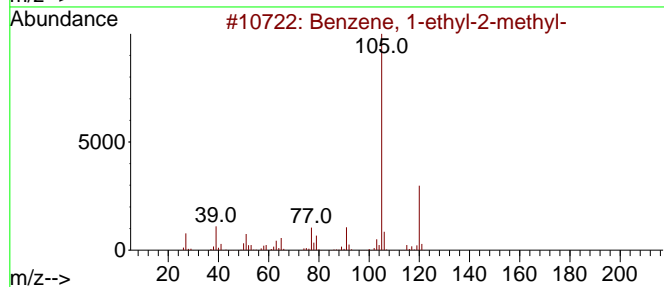
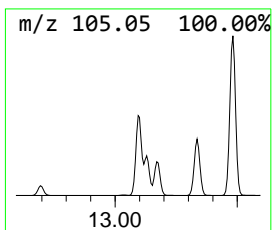
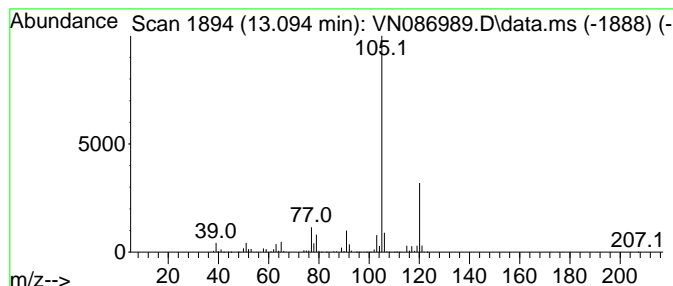
Quant Method : Z:\voasrv\HPCHEM1\MSVOA_N\methods\82N060625W.M
 Quant Title : SW846 8260

TIC Library : C:\Database\NIST20.L
 TIC Integration Parameters: LSCINT.P

 Peak Number 6 Benzene, 1-ethyl-2-methyl- Concentration Rank 2

R.T.	EstConc	Area	Relative to ISTD	R.T.
13.094	64.52 ug/l	6005330	1,4-Dichlorobenzene-d4	13.794

Hit#	of	5	Tentative ID	MW	MolForm	CAS#	Qual
1			Benzene, 1-ethyl-2-methyl-	120	C9H12	000611-14-3	95
2			Benzene, 1-ethyl-3-methyl-	120	C9H12	000620-14-4	95
3			Benzene, 1,2,4-trimethyl-	120	C9H12	000095-63-6	91
4			Mesitylene	120	C9H12	000108-67-8	91
5			Benzene, 1,2,3-trimethyl-	120	C9H12	000526-73-8	91



Data Path : Z:\voasrv\HPCHEM1\MSVOA_N\Data\VN061225\
 Data File : VN086989.D
 Acq On : 12 Jun 2025 19:41
 Operator : JC\MD
 Sample : Q2268-07
 Misc : 5.0mL/MSVOA_N/WATER
 ALS Vial : 24 Sample Multiplier: 1

Instrument :
 MSVOA_N
 ClientSampleId :
 MW-6-20250605

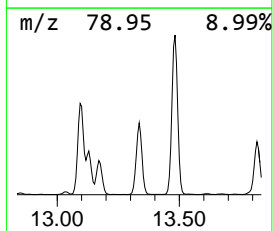
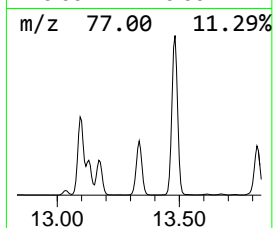
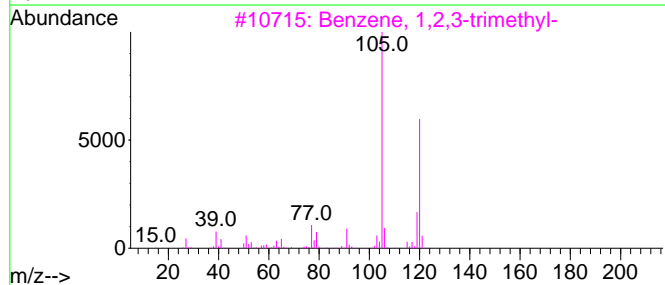
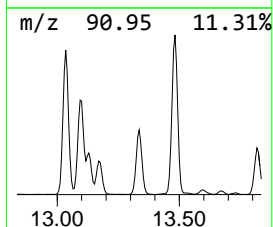
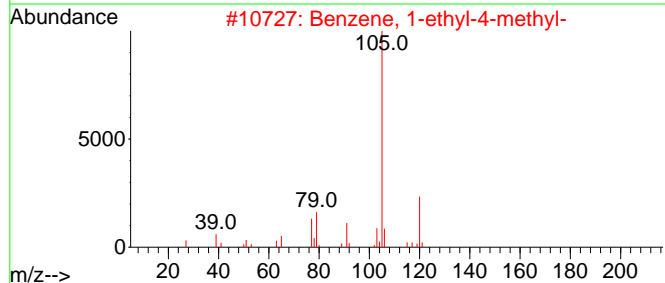
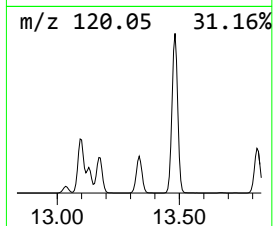
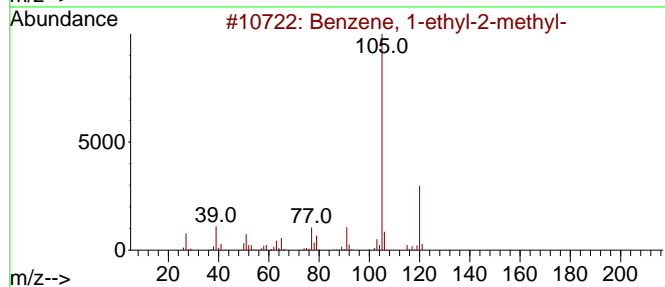
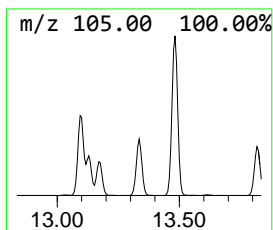
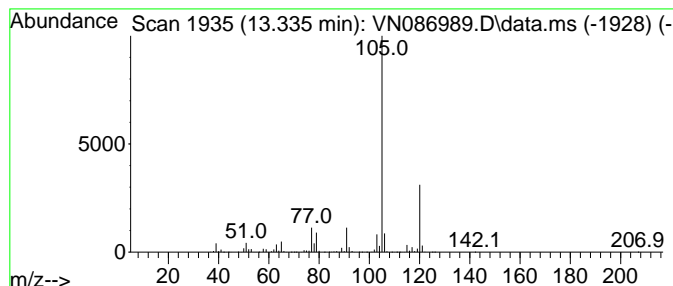
Quant Method : Z:\voasrv\HPCHEM1\MSVOA_N\methods\82N060625W.M
 Quant Title : SW846 8260

TIC Library : C:\Database\NIST20.L
 TIC Integration Parameters: LSCINT.P

 Peak Number 7 Benzene, 1-ethyl-4-methyl- Concentration Rank 7

R.T.	EstConc	Area	Relative to ISTD	R.T.
13.335	41.70 ug/l	3881490	1,4-Dichlorobenzene-d4	13.794

Hit#	of	5	Tentative ID	MW	MolForm	CAS#	Qual
1			Benzene, 1-ethyl-2-methyl-	120	C9H12	000611-14-3	95
2			Benzene, 1-ethyl-4-methyl-	120	C9H12	000622-96-8	94
3			Benzene, 1,2,3-trimethyl-	120	C9H12	000526-73-8	91
4			Benzene, 1-ethyl-3-methyl-	120	C9H12	000620-14-4	91
5			Mesitylene	120	C9H12	000108-67-8	91



Data Path : Z:\voasrv\HPCHEM1\MSVOA_N\Data\VN061225\
 Data File : VN086989.D
 Acq On : 12 Jun 2025 19:41
 Operator : JC\MD
 Sample : Q2268-07
 Misc : 5.0mL/MSVOA_N/WATER
 ALS Vial : 24 Sample Multiplier: 1

Instrument :
 MSVOA_N
 ClientSampleId :
 MW-6-20250605

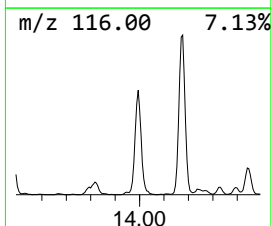
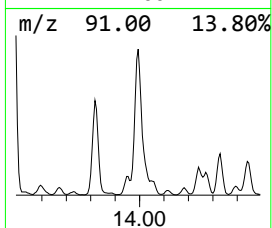
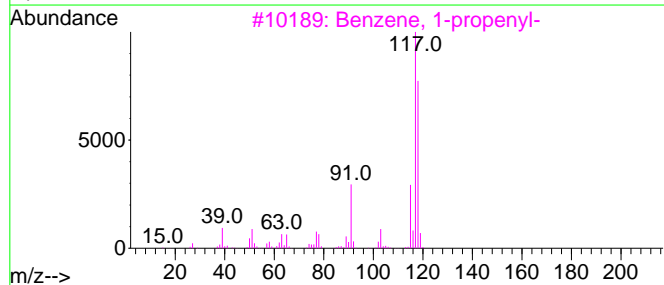
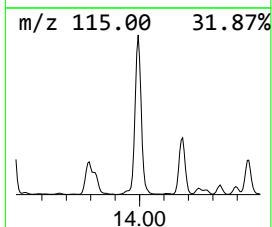
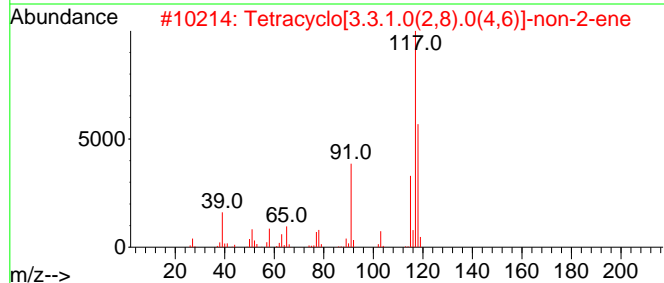
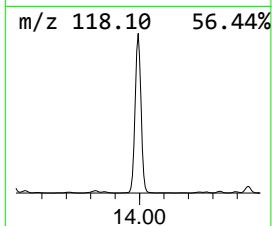
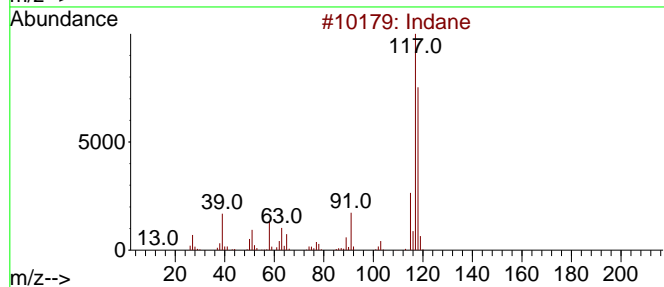
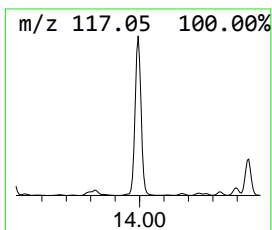
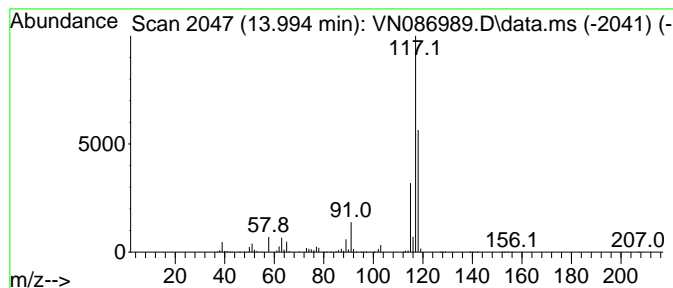
Quant Method : Z:\voasrv\HPCHEM1\MSVOA_N\methods\82N060625W.M
 Quant Title : SW846 8260

TIC Library : C:\Database\NIST20.L
 TIC Integration Parameters: LSCINT.P

 Peak Number 8 Indane Concentration Rank 4

R.T.	EstConc	Area	Relative to ISTD	R.T.
13.994	56.39 ug/l	5249100	1,4-Dichlorobenzene-d4	13.794

Hit#	of	5	Tentative ID	MW	MolForm	CAS#	Qual
1			Indane	118	C9H10	000496-11-7	87
2			Tetracyclo[3.3.1.0(2,8).0(4,6)]-...	118	C9H10	1000191-13-7	64
3			Benzene, 1-propenyl-	118	C9H10	000637-50-3	64
4			Deltacyclene	118	C9H10	007785-10-6	64
5			Benzene, cyclopropyl-	118	C9H10	000873-49-4	64



Data Path : Z:\voasrv\HPCHEM1\MSVOA_N\Data\VN061225\
 Data File : VN086989.D
 Acq On : 12 Jun 2025 19:41
 Operator : JC\MD
 Sample : Q2268-07
 Misc : 5.0mL/MSVOA_N/WATER
 ALS Vial : 24 Sample Multiplier: 1

Instrument :
 MSVOA_N
 ClientSampleId :
 MW-6-20250605

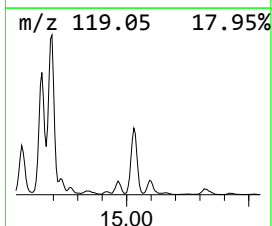
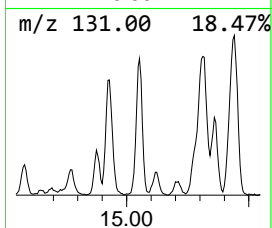
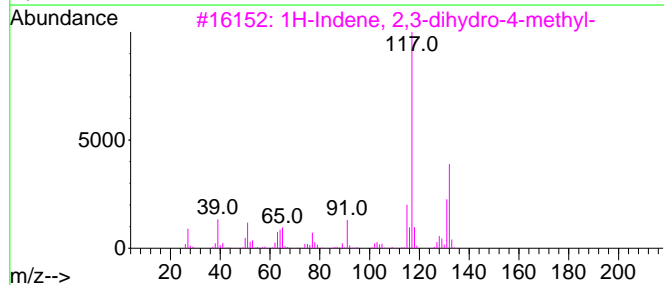
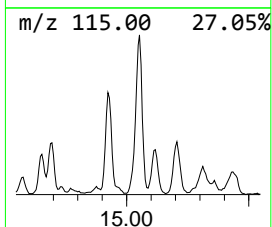
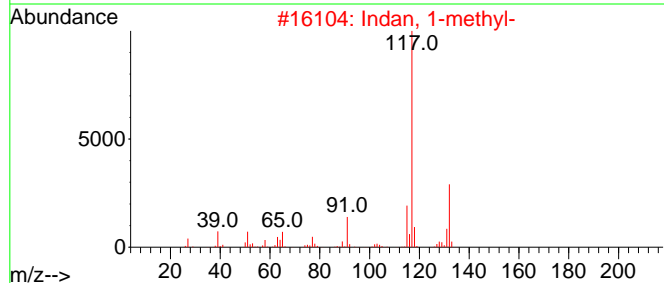
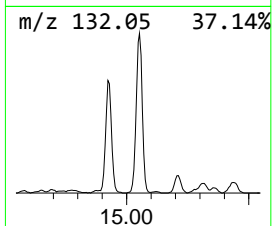
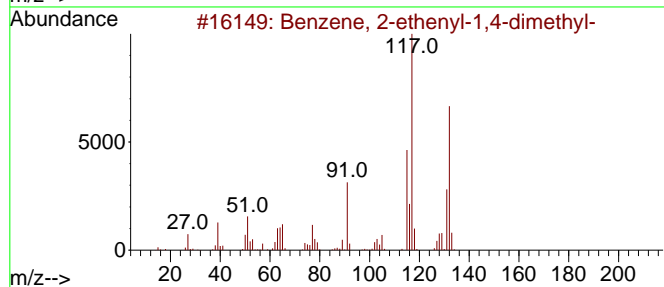
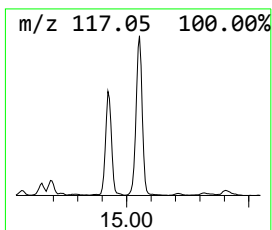
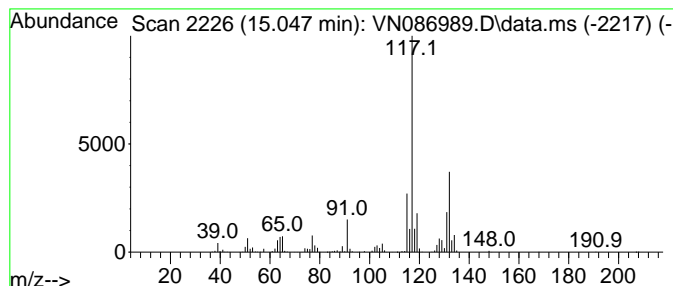
Quant Method : Z:\voasrv\HPCHEM1\MSVOA_N\methods\82N060625W.M
 Quant Title : SW846 8260

TIC Library : C:\Database\NIST20.L
 TIC Integration Parameters: LSCINT.P

 Peak Number 9 Benzene, 2-ethenyl-1,4-dime... Concentration Rank 10

R.T.	EstConc	Area	Relative to ISTD	R.T.
15.047	13.91 ug/l	1294960	1,4-Dichlorobenzene-d4	13.794

Hit#	of 5	Tentative ID	MW	MolForm	CAS#	Qual
1		Benzene, 2-ethenyl-1,4-dimethyl-	132	C10H12	002039-89-6	96
2		Indan, 1-methyl-	132	C10H12	000767-58-8	94
3		1H-Indene, 2,3-dihydro-4-methyl-	132	C10H12	000824-22-6	93
4		1H-Indene, 2,3-dihydro-5-methyl-	132	C10H12	000874-35-1	91
5		Benzene, 1-ethenyl-4-ethyl-	132	C10H12	003454-07-7	87



Data Path : Z:\voasrv\HPCHEM1\MSVOA_N\Data\VN061225\
 Data File : VN086989.D
 Acq On : 12 Jun 2025 19:41
 Operator : JC\MD
 Sample : Q2268-07
 Misc : 5.0mL/MSVOA_N/WATER
 ALS Vial : 24 Sample Multiplier: 1

Instrument :
 MSVOA_N
 ClientSampleId :
 MW-6-20250605

Quant Method : Z:\voasrv\HPCHEM1\MSVOA_N\methods\82N060625W.M
 Quant Title : SW846 8260

TIC Library : C:\Database\NIST20.L
 TIC Integration Parameters: LSCINT.P

TIC Top Hit name	RT	EstConc	Units	Response	--Internal Standard--			
					#	RT	Resp	Conc
Butane, 2-methyl-	3.283	59.1	ug/l	1128130	1	8.230	953920	50.0
Cyclopentane	5.406	55.5	ug/l	1059650	1	8.230	953920	50.0
Pentane, 3-methyl-	5.830	47.0	ug/l	897063	1	8.230	953920	50.0
Cyclopentane, m...	7.342	36.3	ug/l	693123	1	8.230	953920	50.0
Butane, 2-metho...	8.783	134.2	ug/l	2833790	2	9.106	1055570	50.0
Benzene, 1-ethy...	13.094	64.5	ug/l	6005330	4	13.794	4654000	50.0
Benzene, 1-ethy...	13.335	41.7	ug/l	3881490	4	13.794	4654000	50.0
Indane	13.994	56.4	ug/l	5249100	4	13.794	4654000	50.0
Benzene, 2-ethe...	15.047	13.9	ug/l	1294960	4	13.794	4654000	50.0