

Data Path : Z:\pestpcbsrv\HPCHEM1\ECD_P\Data\PP051925\
 Data File : PP072163.D
 Signal(s) : Signal #1: ECD1A.ch Signal #2: ECD2B.ch
 Acq On : 19 May 2025 09:26
 Operator : YP\AJ
 Sample : I.BLK
 Misc :
 ALS Vial : 2 Sample Multiplier: 1

Instrument :
 ECD_P
 ClientSampleId :
 I.BLK

Integration File signal 1: autoint1.e
 Integration File signal 2: autoint2.e
 Quant Time: May 20 03:35:39 2025
 Quant Method : Z:\pestpcbsrv\HPCHEM1\ECD_P\methods\PP051925.M
 Quant Title : GC EXTRACTABLES
 QLast Update : Tue May 20 03:29:33 2025
 Response via : Initial Calibration
 Integrator: ChemStation

Volume Inj. : 2 µl
 Signal #1 Phase : ZB-MR1 Signal #2 Phase: ZB-MR2
 Signal #1 Info : 30Mx0.32mmx 0.50µ Signal #2 Info : 30M x 0.32mm x 0.25µm

Compound	RT#1	RT#2	Resp#1	Resp#2	ng/ml	ng/ml

System Monitoring Compounds						
1) SA Tetrachlo...	4.495	3.788	32787184	26552565	16.306	16.612
2) SA Decachlor...	10.213	8.822	27208113	18027788	16.701	17.030

Target Compounds

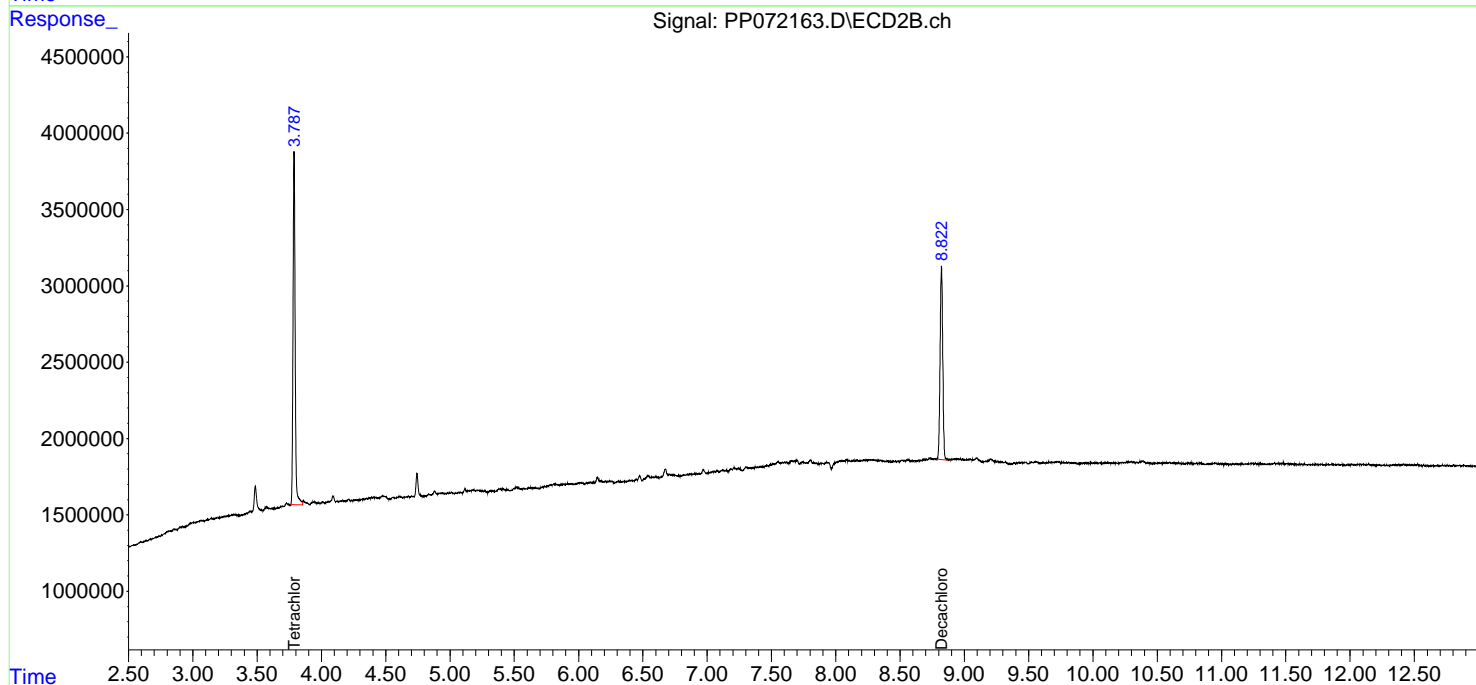
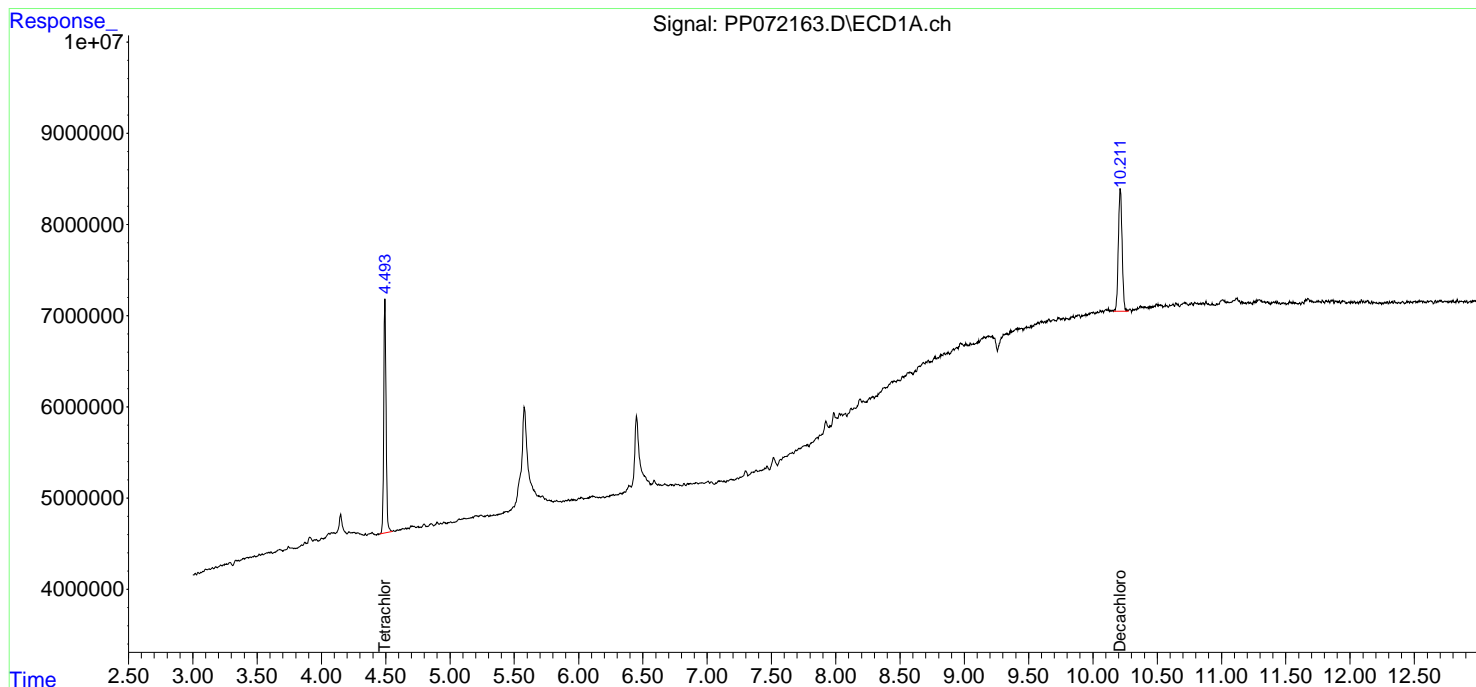
(f)=RT Delta > 1/2 Window (#)=Amounts differ by > 25% (m)=manual int.

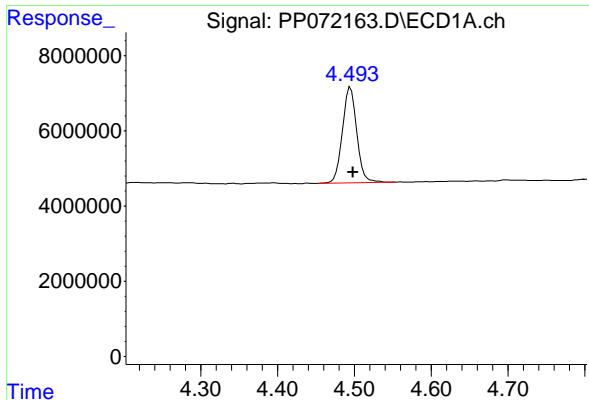
Data Path : Z:\pestpcbsrv\HPCHEM1\ECD_P\Data\PP051925\
Data File : PP072163.D
Signal(s) : Signal #1: ECD1A.ch Signal #2: ECD2B.ch
Acq On : 19 May 2025 09:26
Operator : YP\AJ
Sample : I.BLK
Misc :
ALS Vial : 2 Sample Multiplier: 1

Instrument :
ECD_P
ClientSampleId :
I.BLK

Integration File signal 1: autoint1.e
Integration File signal 2: autoint2.e
Quant Time: May 20 03:35:39 2025
Quant Method : Z:\pestpcbsrv\HPCHEM1\ECD_P\methods\PP051925.M
Quant Title : GC EXTRACTABLES
QLast Update : Tue May 20 03:29:33 2025
Response via : Initial Calibration
Integrator: ChemStation

Volume Inj. : 2 µl
Signal #1 Phase : ZB-MR1 Signal #2 Phase: ZB-MR2
Signal #1 Info : 30Mx0.32mmx 0.50µm Signal #2 Info : 30M x 0.32mm x 0.25µm

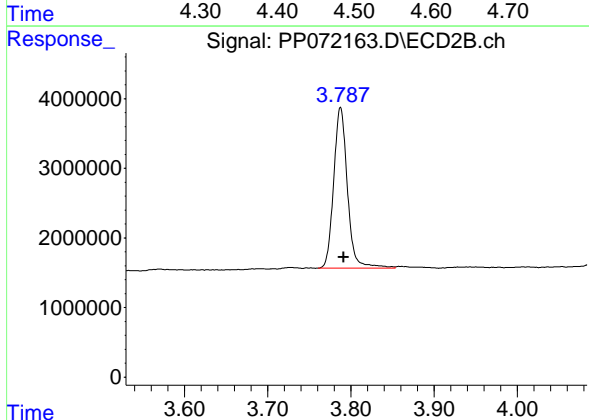




#1 Tetrachloro-m-xylene

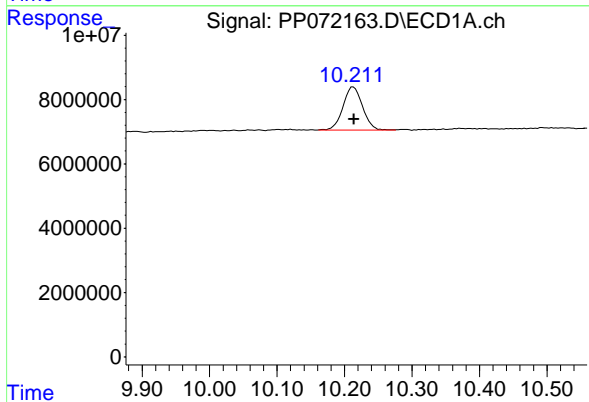
R.T.: 4.495 min
 Delta R.T.: -0.003 min
 Response: 32787184
 Conc: 16.31 ng/ml

Instrument :
 ECD_P
 ClientSampleId :
 I.BLK



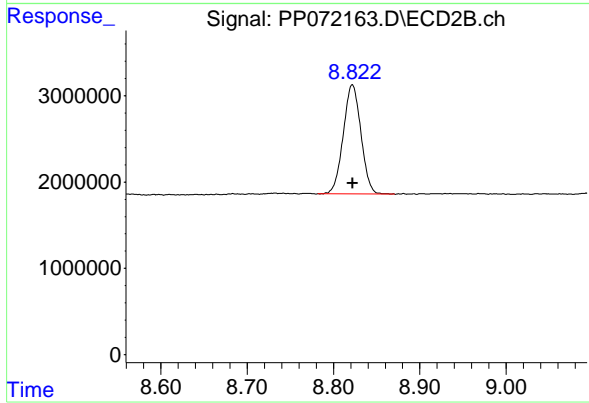
#1 Tetrachloro-m-xylene

R.T.: 3.788 min
 Delta R.T.: -0.004 min
 Response: 26552565
 Conc: 16.61 ng/ml



#2 Decachlorobiphenyl

R.T.: 10.213 min
 Delta R.T.: 0.000 min
 Response: 27208113
 Conc: 16.70 ng/ml



#2 Decachlorobiphenyl

R.T.: 8.822 min
 Delta R.T.: 0.000 min
 Response: 18027788
 Conc: 17.03 ng/ml