

Data Path : Z:\voasrv\HPCHEM1\MSVOA_Y\Data\VY062525\
 Data File : VY022833.D
 Acq On : 25 Jun 2025 18:26
 Operator : SY/MD
 Sample : Q2425-03
 Misc : 5.60g/5.0mL/MSVOA_Y/SOIL/A
 ALS Vial : 24 Sample Multiplier: 1

Instrument :
 MSVOA_Y
 ClientSampleId :
 COMP-3

Quant Time: Jun 26 01:29:50 2025
 Quant Method : Z:\voasrv\HPCHEM1\MSVOA_Y\methods\82Y062325S.M
 Quant Title : SW846 8260
 QLast Update : Tue Jun 24 08:29:52 2025
 Response via : Initial Calibration

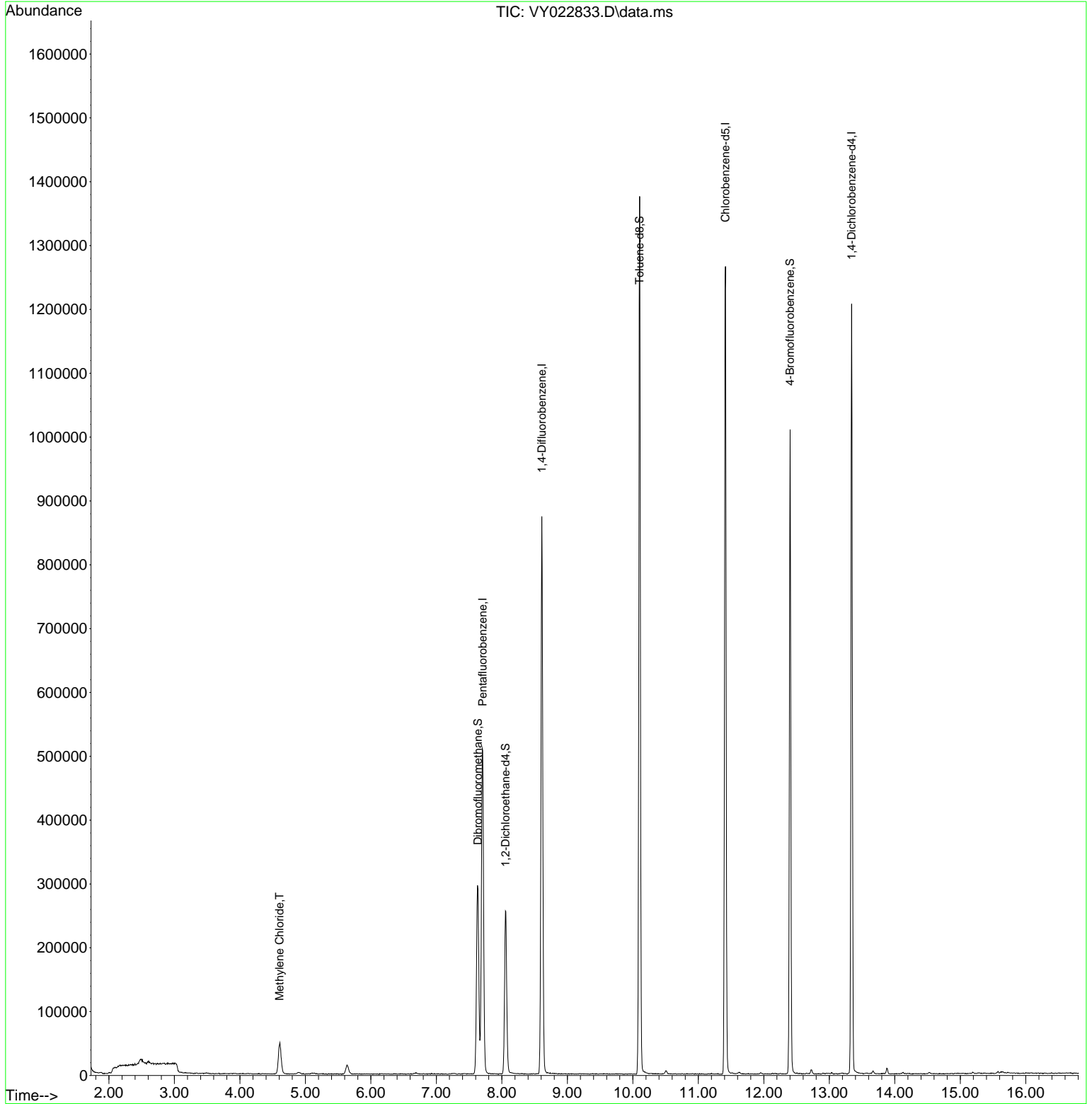
| Compound | R.T. | QIon | Response | Conc | Units | Dev(Min) |
|-----------------------------|--------|-------|----------|----------|-------|----------|
| ----- | | | | | | |
| Internal Standards | | | | | | |
| 1) Pentafluorobenzene | 7.707 | 168 | 401005 | 50.000 | ug/l | 0.00 |
| 34) 1,4-Difluorobenzene | 8.609 | 114 | 712820 | 50.000 | ug/l | 0.00 |
| 63) Chlorobenzene-d5 | 11.414 | 117 | 666622 | 50.000 | ug/l | 0.00 |
| 72) 1,4-Dichlorobenzene-d4 | 13.340 | 152 | 284845 | 50.000 | ug/l | 0.00 |
| System Monitoring Compounds | | | | | | |
| 33) 1,2-Dichloroethane-d4 | 8.055 | 65 | 204407 | 45.671 | ug/l | -0.01 |
| Spiked Amount | 50.000 | Range | 50 - 163 | Recovery | = | 91.340% |
| 35) Dibromofluoromethane | 7.634 | 113 | 214625 | 49.509 | ug/l | 0.00 |
| Spiked Amount | 50.000 | Range | 54 - 147 | Recovery | = | 99.020% |
| 50) Toluene-d8 | 10.103 | 98 | 856898 | 49.814 | ug/l | 0.00 |
| Spiked Amount | 50.000 | Range | 58 - 134 | Recovery | = | 99.620% |
| 62) 4-Bromofluorobenzene | 12.401 | 95 | 284808 | 51.503 | ug/l | 0.00 |
| Spiked Amount | 50.000 | Range | 30 - 143 | Recovery | = | 103.000% |
| Target Compounds | | | | | | |
| 20) Methylene Chloride | 4.604 | 84 | 35538 | 6.652 | ug/l | 87 |
| ----- | | | | | | |

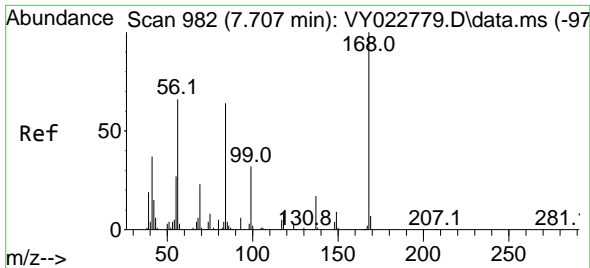
(#) = qualifier out of range (m) = manual integration (+) = signals summed

Data Path : Z:\voasrv\HPCHEM1\MSVOA_Y\Data\VY062525\
 Data File : VY022833.D
 Acq On : 25 Jun 2025 18:26
 Operator : SY/MD
 Sample : Q2425-03
 Misc : 5.60g/5.0mL/MSVOA_Y/SOIL/A
 ALS Vial : 24 Sample Multiplier: 1

Instrument :
 MSVOA_Y
ClientSampleId :
 COMP-3

Quant Time: Jun 26 01:29:50 2025
 Quant Method : Z:\voasrv\HPCHEM1\MSVOA_Y\methods\82Y062325S.M
 Quant Title : SW846 8260
 QLast Update : Tue Jun 24 08:29:52 2025
 Response via : Initial Calibration

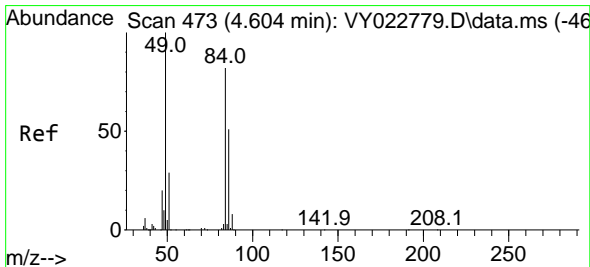
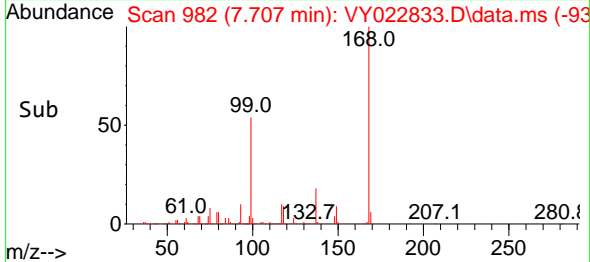
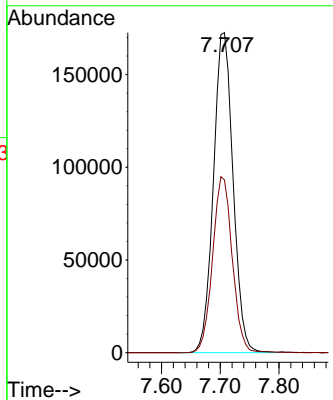
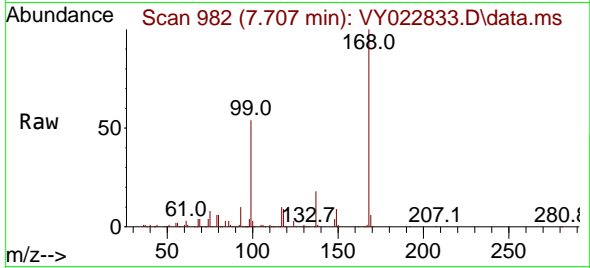




#1
 Pentafluorobenzene
 Concen: 50.000 ug/l
 RT: 7.707 min Scan# 91
 Delta R.T. -0.006 min
 Lab File: VY022833.D
 Acq: 25 Jun 2025 18:26

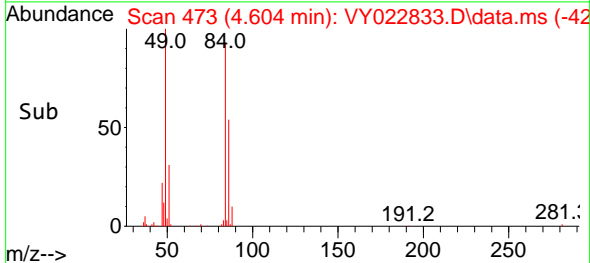
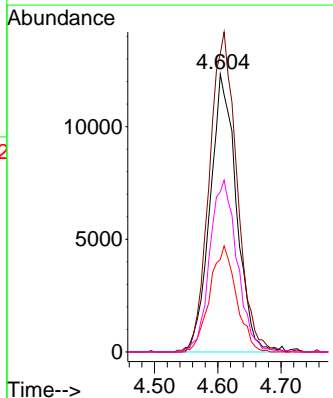
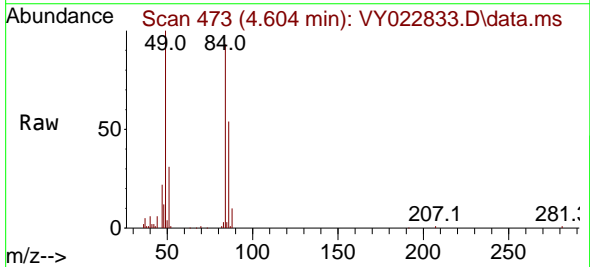
Instrument : MSVOA_Y
 ClientSampleId :
 COMP-3

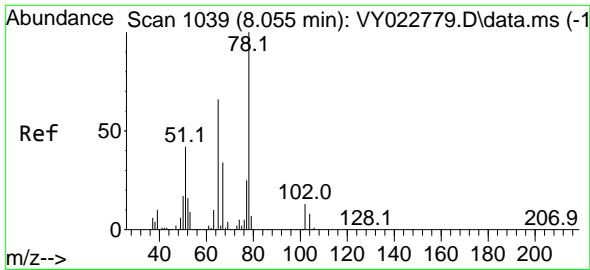
Tgt Ion:168 Resp: 401005
 Ion Ratio Lower Upper
 168 100
 99 54.0 44.3 66.5



#20
 Methylene Chloride
 Concen: 6.652 ug/l
 RT: 4.604 min Scan# 473
 Delta R.T. -0.019 min
 Lab File: VY022833.D
 Acq: 25 Jun 2025 18:26

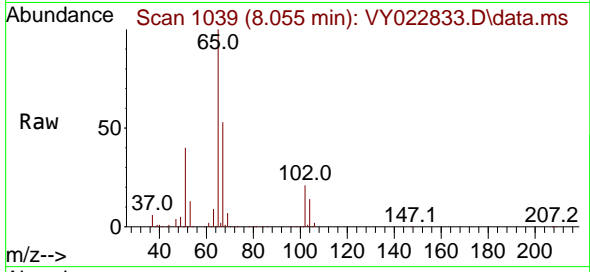
Tgt Ion: 84 Resp: 35538
 Ion Ratio Lower Upper
 84 100
 49 106.7 101.9 152.9
 51 33.2 29.8 44.8
 86 57.7 51.3 76.9



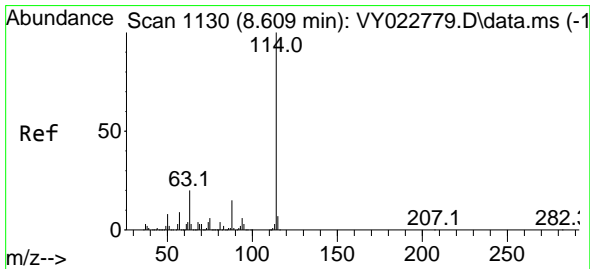
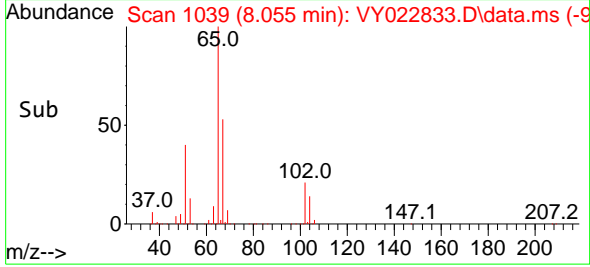
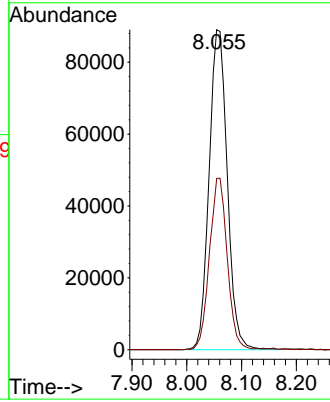


#33
 1,2-Dichloroethane-d4
 Concen: 45.671 ug/l
 RT: 8.055 min Scan# 1039
 Delta R.T. -0.012 min
 Lab File: VY022833.D
 Acq: 25 Jun 2025 18:26

Instrument : MSVOA_Y
 ClientSampleId : VY022833.D
 COMP-3

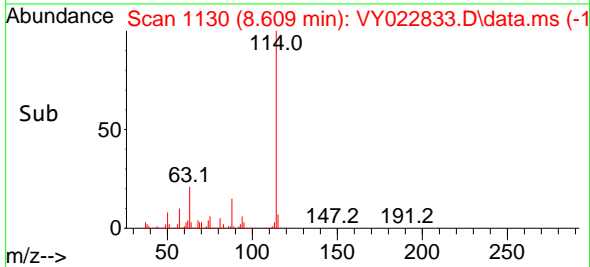
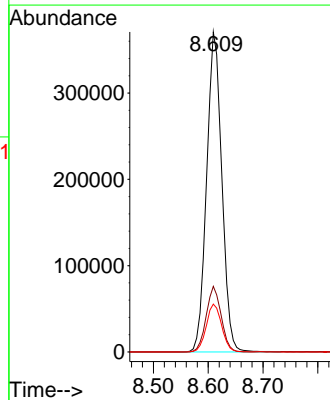
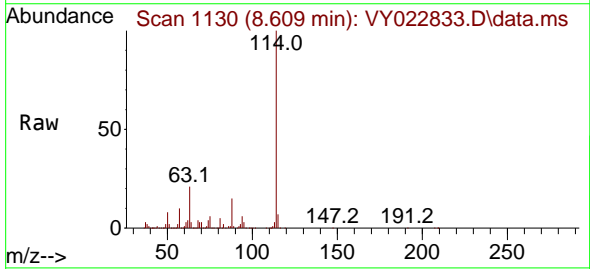


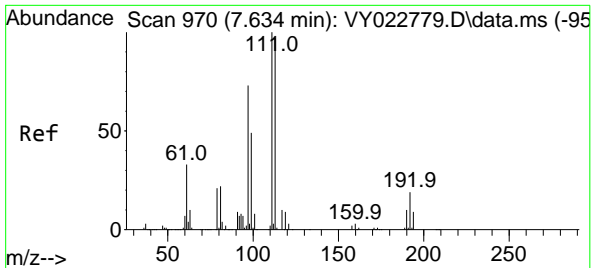
Tgt Ion: 65 Resp: 204407
 Ion Ratio Lower Upper
 65 100
 67 52.7 0.0 103.4



#34
 1,4-Difluorobenzene
 Concen: 50.000 ug/l
 RT: 8.609 min Scan# 1130
 Delta R.T. -0.006 min
 Lab File: VY022833.D
 Acq: 25 Jun 2025 18:26

Tgt Ion: 114 Resp: 712820
 Ion Ratio Lower Upper
 114 100
 63 20.5 0.0 40.8
 88 14.9 0.0 27.8



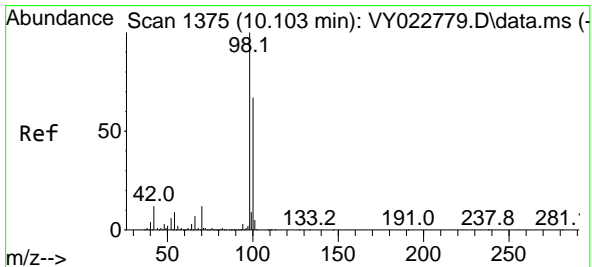
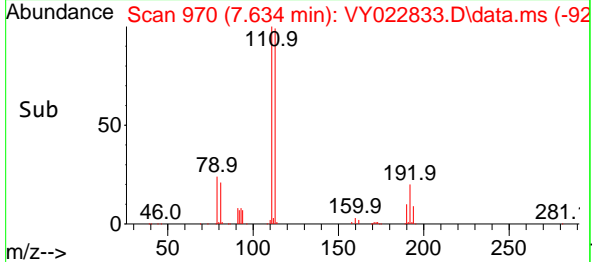
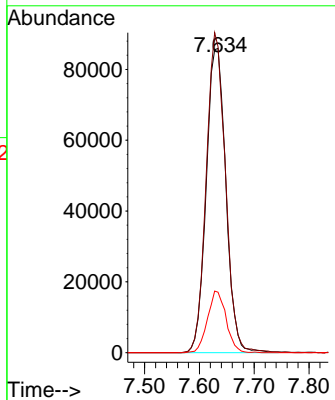
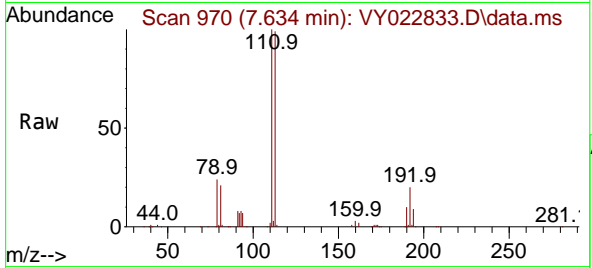


#35
 Dibromofluoromethane
 Concen: 49.509 ug/l
 RT: 7.634 min Scan# 91
 Delta R.T. -0.006 min
 Lab File: VY022833.D
 Acq: 25 Jun 2025 18:26

Instrument : MSVOA_Y
 ClientSampleId : COMP-3

Tgt Ion:113 Resp: 214625

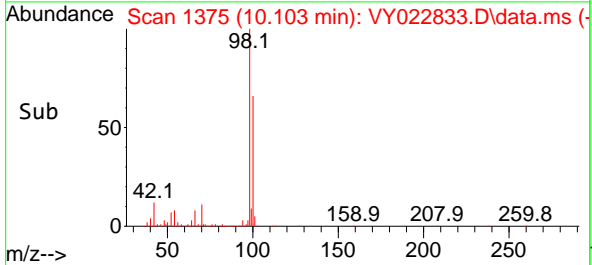
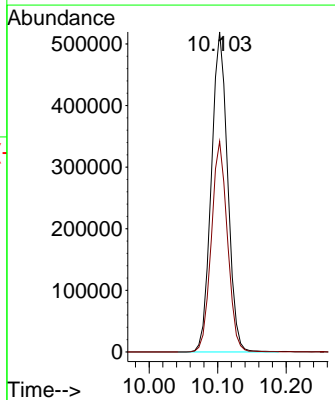
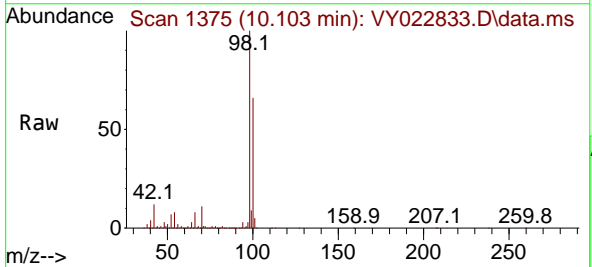
| Ion | Ratio | Lower | Upper |
|-----|-------|-------|-------|
| 113 | 100 | | |
| 111 | 102.4 | 81.1 | 121.7 |
| 192 | 19.1 | 14.2 | 21.2 |

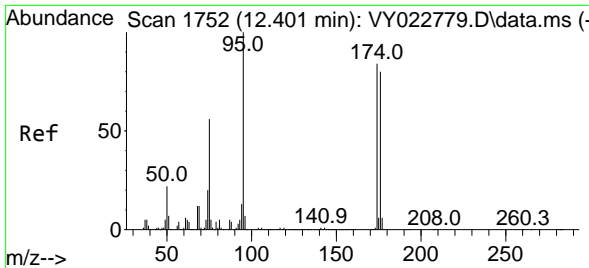


#50
 Toluene-d8
 Concen: 49.814 ug/l
 RT: 10.103 min Scan# 1375
 Delta R.T. -0.006 min
 Lab File: VY022833.D
 Acq: 25 Jun 2025 18:26

Tgt Ion: 98 Resp: 856898

| Ion | Ratio | Lower | Upper |
|-----|-------|-------|-------|
| 98 | 100 | | |
| 100 | 64.9 | 51.4 | 77.0 |

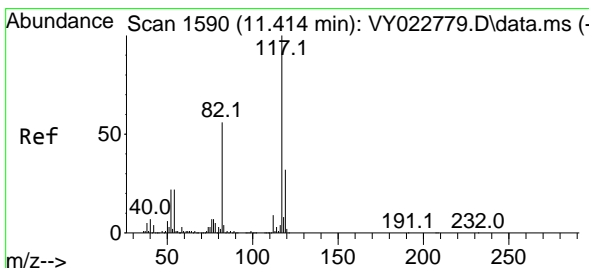
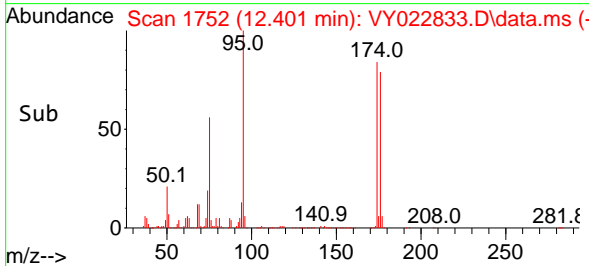
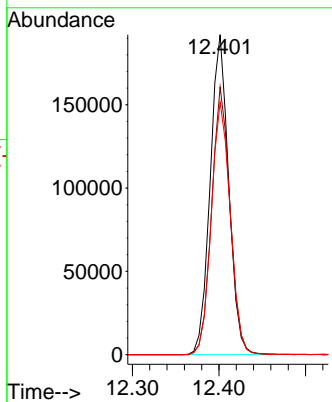
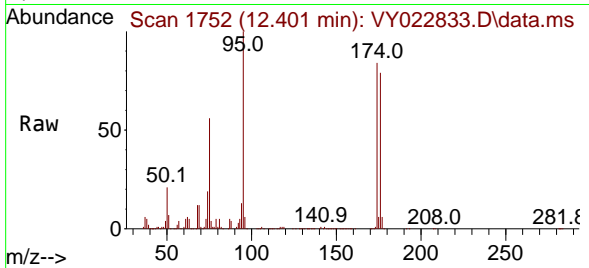




#62
 4-Bromofluorobenzene
 Concen: 51.503 ug/l
 RT: 12.401 min Scan# 1752
 Delta R.T. -0.006 min
 Lab File: VY022833.D
 Acq: 25 Jun 2025 18:26

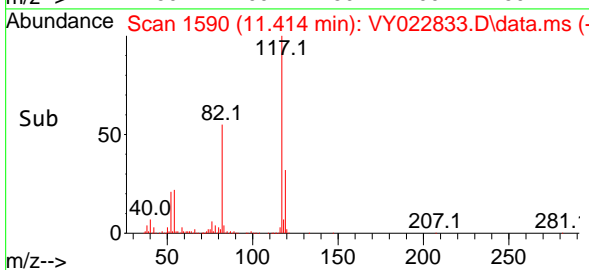
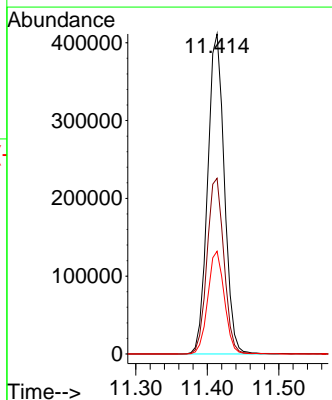
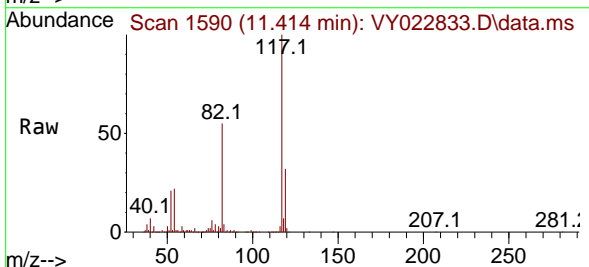
Instrument : MSVOA_Y
 ClientSampleId : COMP-3

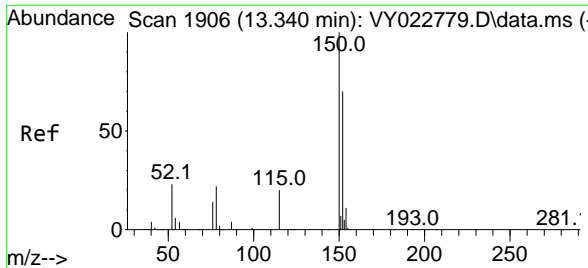
| Tgt Ion | Resp | Lower | Upper |
|---------|--------|-------|-------|
| 95 | 284808 | | |
| 174 | 83.5 | 0.0 | 170.0 |
| 176 | 81.3 | 0.0 | 166.2 |



#63
 Chlorobenzene-d5
 Concen: 50.000 ug/l
 RT: 11.414 min Scan# 1590
 Delta R.T. -0.006 min
 Lab File: VY022833.D
 Acq: 25 Jun 2025 18:26

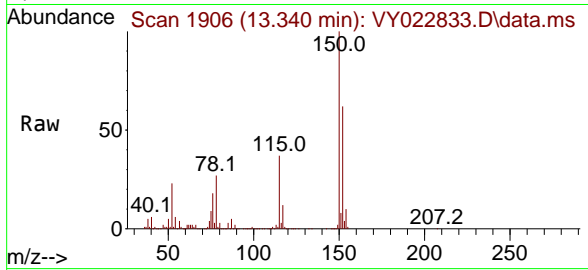
| Tgt Ion | Resp | Lower | Upper |
|---------|--------|-------|-------|
| 117 | 666622 | | |
| 82 | 54.9 | 44.6 | 66.8 |
| 119 | 32.1 | 25.4 | 38.0 |





#72
 1,4-Dichlorobenzene-d4
 Concen: 50.000 ug/l
 RT: 13.340 min Scan# 1906
 Delta R.T. -0.006 min
 Lab File: VY022833.D
 Acq: 25 Jun 2025 18:26

Instrument : MSVOA_Y
 ClientSampleId : COMP-3



| Tgt Ion | Resp | Lower | Upper |
|---------|--------|-------|-------|
| 152 | 284845 | 100 | |
| 115 | 58.7 | 28.9 | 86.7 |
| 150 | 157.9 | 0.0 | 349.6 |

