

Data Path : Z:\pestpcbsrv\HPCHEM1\FID\_B\Data\FB062725\  
Data File : FB031958.D  
Signal(s) : FID2B.CH  
Acq On : 27 Jun 2025 17:01  
Operator : YP/AJ  
Sample : Q2436-08  
Misc : 6.00G/5.00 ML DI WATER  
ALS Vial : 3 Sample Multiplier: 1

Instrument :  
FID\_B  
ClientSampleId :  
TP-100

Integration File: Calibration.e  
Quant Time: Jun 28 05:16:15 2025  
Quant Method : Z:\pestpcbsrv\HPCHEM1\FID\_B\Method\FB062325.M  
Quant Title :  
QLast Update : Mon Jun 23 13:56:54 2025  
Response via : Initial Calibration  
Integrator: ChemStation

Volume Inj. : 5 g/ml  
Signal Phase : RTX-502.2  
Signal Info : 60mx0.53mmx3.00um

Compound	R.T.	Response	Conc Units
-----			
System Monitoring Compounds			
5) s AAA-TFT	8.794	233428	15.130 ng/ml

Target Compounds

-----

(f)=RT Delta > 1/2 Window

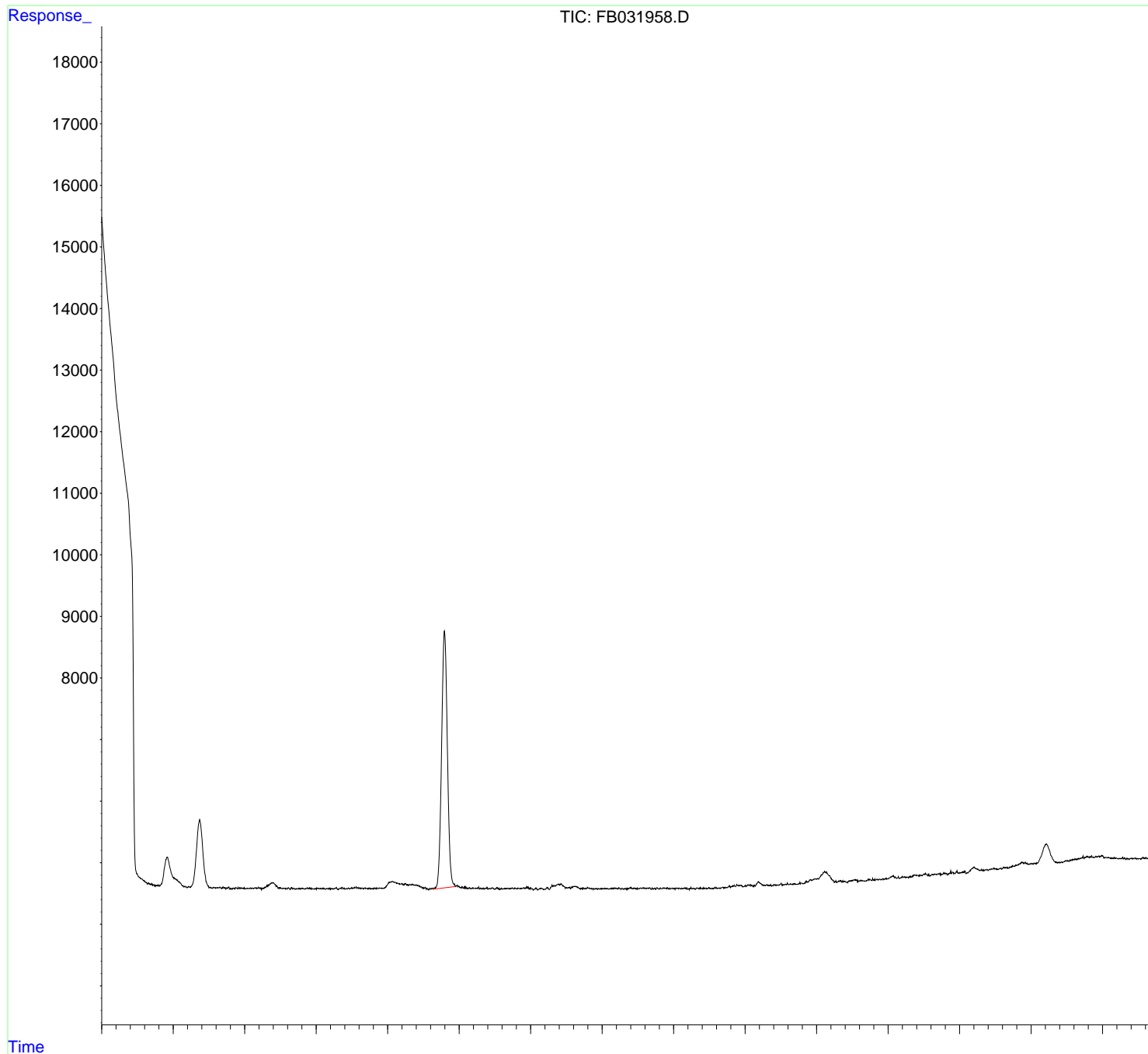
(m)=manual int.

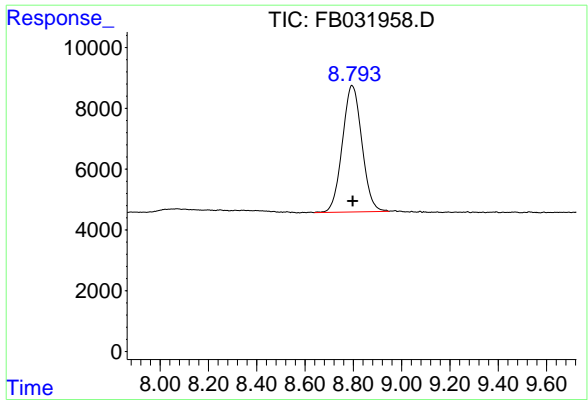
Data Path : Z:\pestpcbsrv\HPCHEM1\FID\_B\Data\FB062725\  
 Data File : FB031958.D  
 Signal(s) : FID2B.CH  
 Acq On : 27 Jun 2025 17:01  
 Operator : YP/AJ  
 Sample : Q2436-08  
 Misc : 6.00G/5.00 ML DI WATER  
 ALS Vial : 3 Sample Multiplier: 1

Instrument :  
 FID\_B  
 ClientSampleId :  
 TP-100

Integration File: Calibration.e  
 Quant Time: Jun 28 05:16:15 2025  
 Quant Method : Z:\pestpcbsrv\HPCHEM1\FID\_B\Method\FB062325.M  
 Quant Title :  
 QLast Update : Mon Jun 23 13:56:54 2025  
 Response via : Initial Calibration  
 Integrator: ChemStation

Volume Inj. : 5 g/ml  
 Signal Phase : RTX-502.2  
 Signal Info : 60mx0.53mmx3.00um





#5 AAA-TFT  
R.T.: 8.794 min  
Delta R.T.: -0.003 min  
Response: 233428  
Conc: 15.13 ng/ml

Instrument :  
FID\_B  
ClientSampleId :  
TP-100