

Data Path : Z:\pestpcbsrv\HPCHEM1\ECD\_P\Data\PP062725\  
 Data File : PP073336.D  
 Signal(s) : Signal #1: ECD1A.ch Signal #2: ECD2B.ch  
 Acq On : 27 Jun 2025 18:57  
 Operator : YP\AJ  
 Sample : Q2436-02  
 Misc :  
 ALS Vial : 17 Sample Multiplier: 1

Instrument :  
 ECD\_P  
 ClientSampleId :  
 TP-69

Integration File signal 1: autoint1.e  
 Integration File signal 2: autoint2.e  
 Quant Time: Jun 27 23:22:57 2025  
 Quant Method : Z:\pestpcbsrv\HPCHEM1\ECD\_P\methods\PP061725.M  
 Quant Title : GC EXTRACTABLES  
 QLast Update : Wed Jun 18 08:17:15 2025  
 Response via : Initial Calibration  
 Integrator: ChemStation

Volume Inj. : 2 µl  
 Signal #1 Phase : ZB-MR1 Signal #2 Phase: ZB-MR2  
 Signal #1 Info : 30Mx0.32mmx 0.50µ Signal #2 Info : 30M x 0.32mm x 0.25µm

Compound	RT#1	RT#2	Resp#1	Resp#2	ng/ml	ng/ml
-----						
System Monitoring Compounds						
1) SA Tetrachlo...	4.488	3.783	33572685	30174904	15.905	16.747
2) SA Decachlor...	10.176	8.787	21366506	18423722	12.503	13.803
Target Compounds						
3) L1 AR-1016-1	5.640	4.874	291648	99856	4.013	1.453 #
4) L1 AR-1016-2	5.680	4.874	518362	99856	4.983	0.992 #
5) L1 AR-1016-3	5.750	5.076	384334	48549	5.881	0.887 #
6) L1 AR-1016-4	5.831	5.092	186758	199374	3.572	4.475 #
7) L1 AR-1016-5	6.138	5.307	233534	161008	4.670	2.912 #
8) L2 AR-1221-1	4.691	4.001	1208293	174637	49.000	6.499 #
9) L2 AR-1221-2	4.789	4.081	531126	1655507	26.321	82.015 #
10) L2 AR-1221-3	4.867	4.159	412924	207839	6.709	3.539 #
11) L3 AR-1232-1	4.867	4.159	412924	207839	8.794	4.561 #
12) L3 AR-1232-2	5.395	4.874	269100	99856	12.030	2.159 #
13) L3 AR-1232-3	5.680	5.076	518362	48549	10.046	1.977 #
14) L3 AR-1232-4	5.831	5.164	186758	83824	7.236	3.876 #
15) L3 AR-1232-5	5.932	5.307	831388	161008	23.308	7.044 #
16) L4 AR-1242-1	5.640	4.874	291648	99856	4.991	1.808 #
17) L4 AR-1242-2	5.654	4.874	178964	99856	2.068	1.256 #
18) L4 AR-1242-3	5.750	5.048	384334	154519	7.292	3.568 #
19) L4 AR-1242-4	5.831	5.164	186758	83824	4.249	2.020 #
20) L4 AR-1242-5	6.551	5.651	1068530	257615	21.560	4.899 #
21) L5 AR-1248-1	5.640	4.874	291648	99856	6.131	2.291 #
22) L5 AR-1248-2	5.932	5.092	831388	199374	14.199	3.403 #
23) L5 AR-1248-3	6.138	5.164	233534	83824	3.579	1.385 #
24) L5 AR-1248-4	6.514	5.307	1265285	161008	14.874	2.299 #
25) L5 AR-1248-5	6.551	5.718	1068530	209996	12.767	2.956 #
26) L6 AR-1254-1	6.484	5.651	630110	257615	7.486	2.349 #
27) L6 AR-1254-2	6.697	5.827	1126276	321217	8.981	3.397 #
28) L6 AR-1254-3	7.065	6.227	2314286	374194	17.638	2.536 #
29) L6 AR-1254-4	7.363	6.458	3821948	244885	31.907	2.522 #
30) L6 AR-1254-5	7.769	6.868	301051	106006	2.635	0.816 #
31) L7 AR-1260-1	7.228	6.371	746670	809267	8.464	8.543
32) L7 AR-1260-2	7.501	6.515	1701606	1765144	12.523	15.160
33) L7 AR-1260-3	7.835	6.702	960631	5904	8.415	0.057 #
34) L7 AR-1260-4	8.045	7.160	1608325	20860	15.608	0.238 #
35) L7 AR-1260-5	8.382	7.399	19459	133051	0.081	0.623 #
36) L8 AR-1262-1	8.045	6.889	1608325	71374	10.865	0.494 #
37) L8 AR-1262-2	8.382	7.160	19459	20860	0.061	0.171 #
38) L8 AR-1262-3	8.726	7.710	227329	321978	1.062	2.857 #
39) L8 AR-1262-4	8.798	7.749	537709	139348	3.412	0.760 #
40) L8 AR-1262-5	9.431	8.227	500974	194370	4.478	2.245 #
41) L9 AR-1268-1	8.726	7.710	227329	321978	0.636	1.121 #

Data Path : Z:\pestpcbsrv\HPCHEM1\ECD\_P\Data\PP062725\  
 Data File : PP073336.D  
 Signal(s) : Signal #1: ECD1A.ch Signal #2: ECD2B.ch  
 Acq On : 27 Jun 2025 18:57  
 Operator : YP\AJ  
 Sample : Q2436-02  
 Misc :  
 ALS Vial : 17 Sample Multiplier: 1

Instrument :  
 ECD\_P  
 ClientSampleId :  
 TP-69

Integration File signal 1: autoint1.e  
 Integration File signal 2: autoint2.e  
 Quant Time: Jun 27 23:22:57 2025  
 Quant Method : Z:\pestpcbsrv\HPCHEM1\ECD\_P\methods\PP061725.M  
 Quant Title : GC EXTRACTABLES  
 QLast Update : Wed Jun 18 08:17:15 2025  
 Response via : Initial Calibration  
 Integrator: ChemStation

Volume Inj. : 2 µl  
 Signal #1 Phase : ZB-MR1 Signal #2 Phase: ZB-MR2  
 Signal #1 Info : 30Mx0.32mmx 0.50µ Signal #2 Info : 30M x 0.32mm x 0.25µm

	Compound	RT#1	RT#2	Resp#1	Resp#2	ng/ml	ng/ml
42)	L9 AR-1268-2	8.798	7.749	537709	139348	1.763	0.542 #
43)	L9 AR-1268-3	9.002	7.977	995277	919065	3.748	4.256
44)	L9 AR-1268-4	9.431	8.263	500974	210450	4.281	2.234 #
45)	L9 AR-1268-5	9.856	8.529	117248	218858	0.159	0.378 #

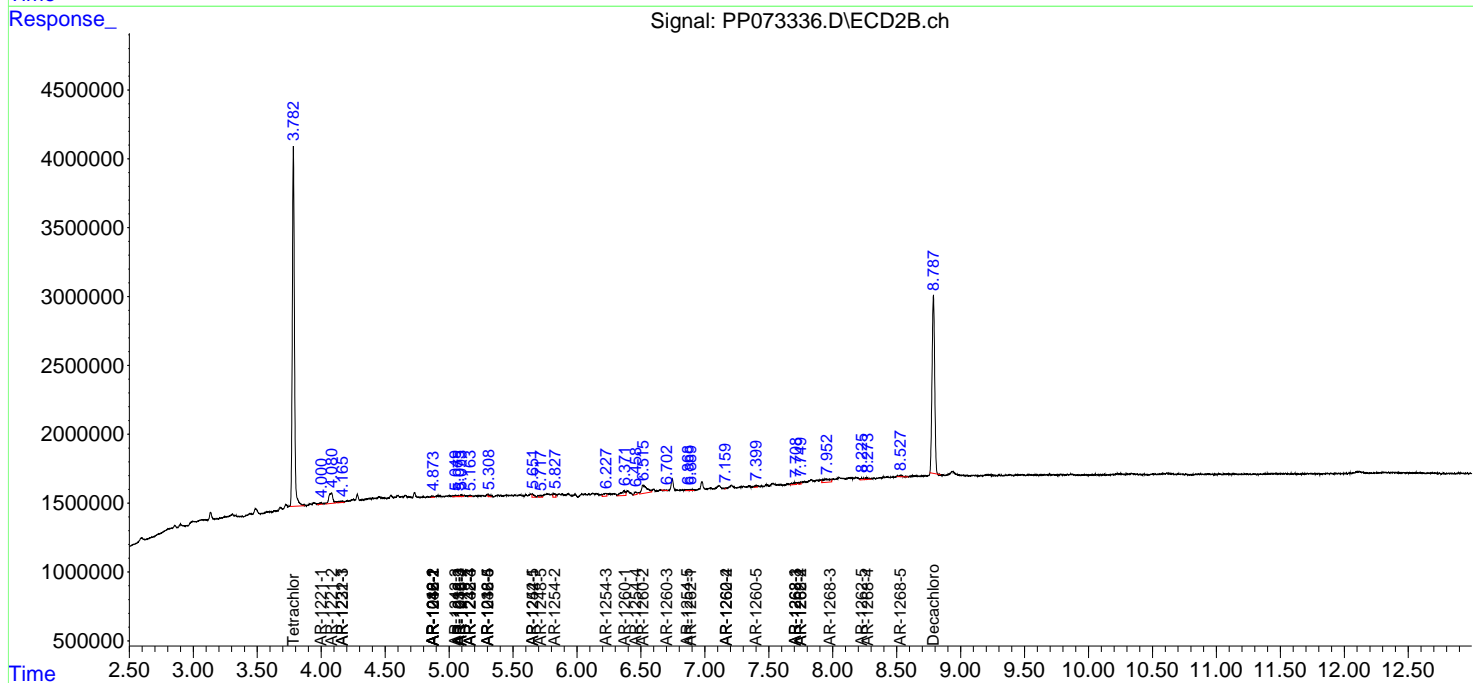
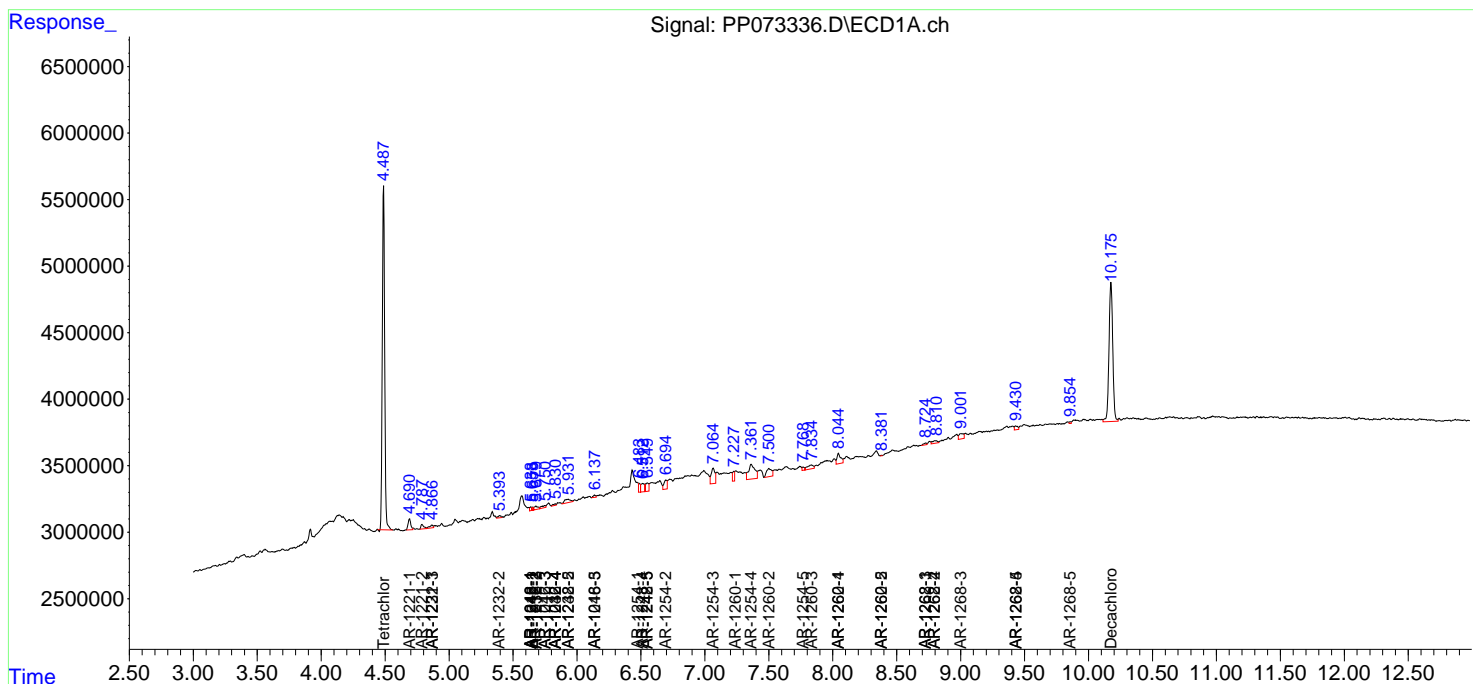
(f)=RT Delta > 1/2 Window (#)=Amounts differ by > 25% (m)=manual int.

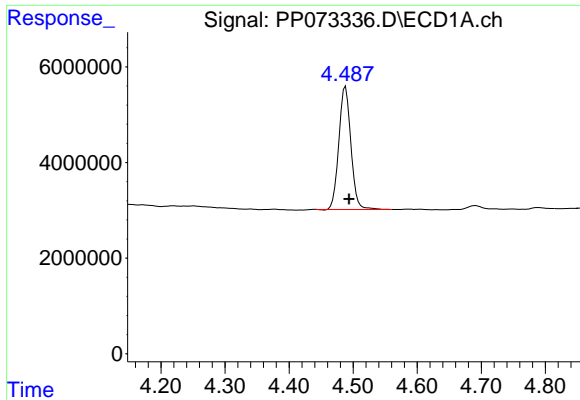
Data Path : Z:\pestpcbsrv\HPCHEM1\ECD\_P\Data\PP062725\  
 Data File : PP073336.D  
 Signal(s) : Signal #1: ECD1A.ch Signal #2: ECD2B.ch  
 Acq On : 27 Jun 2025 18:57  
 Operator : YP\AJ  
 Sample : Q2436-02  
 Misc :  
 ALS Vial : 17 Sample Multiplier: 1

Instrument :  
 ECD\_P  
 ClientSampleId :  
 TP-69

Integration File signal 1: autoint1.e  
 Integration File signal 2: autoint2.e  
 Quant Time: Jun 27 23:22:57 2025  
 Quant Method : Z:\pestpcbsrv\HPCHEM1\ECD\_P\methods\PP061725.M  
 Quant Title : GC EXTRACTABLES  
 QLast Update : Wed Jun 18 08:17:15 2025  
 Response via : Initial Calibration  
 Integrator: ChemStation

Volume Inj. : 2 µl  
 Signal #1 Phase : ZB-MR1 Signal #2 Phase: ZB-MR2  
 Signal #1 Info : 30Mx0.32mmx 0.50µ Signal #2 Info : 30M x 0.32mm x 0.25µm

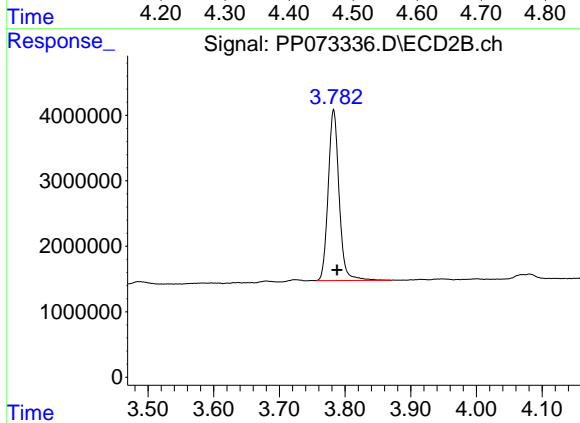




#1 Tetrachloro-m-xylene

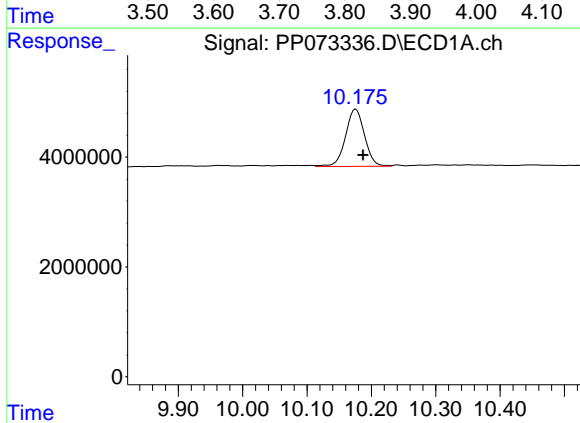
R.T.: 4.488 min  
 Delta R.T.: -0.006 min  
 Response: 33572685  
 Conc: 15.91 ng/ml

Instrument :  
 ECD\_P  
 ClientSampleId :  
 TP-69



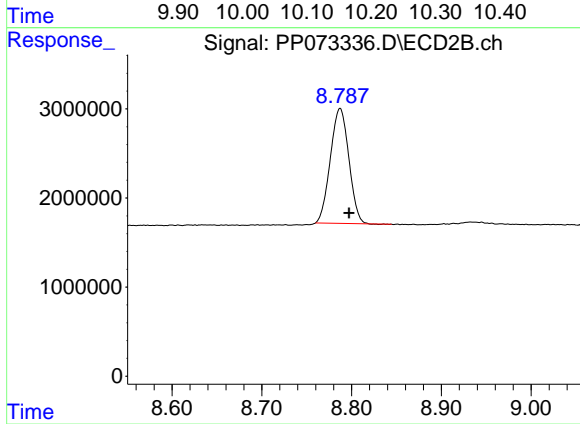
#1 Tetrachloro-m-xylene

R.T.: 3.783 min  
 Delta R.T.: -0.005 min  
 Response: 30174904  
 Conc: 16.75 ng/ml



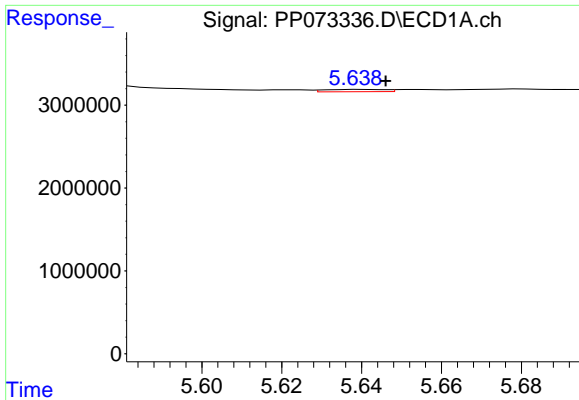
#2 Decachlorobiphenyl

R.T.: 10.176 min  
 Delta R.T.: -0.011 min  
 Response: 21366506  
 Conc: 12.50 ng/ml



#2 Decachlorobiphenyl

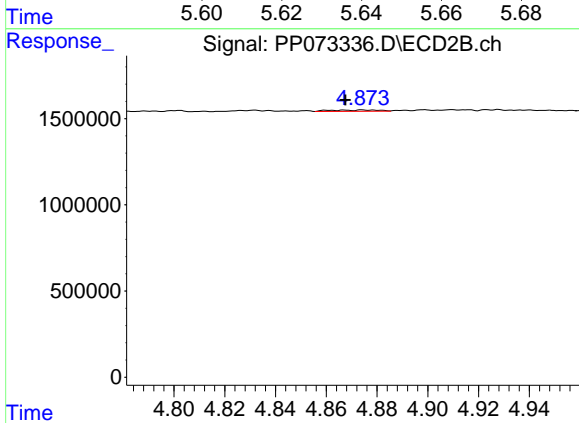
R.T.: 8.787 min  
 Delta R.T.: -0.010 min  
 Response: 18423722  
 Conc: 13.80 ng/ml



#3 AR-1016-1

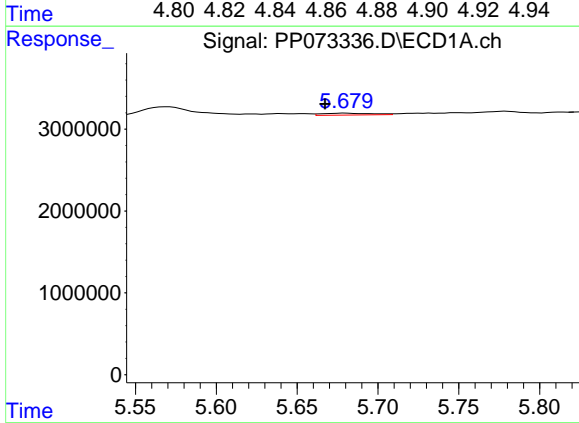
R.T.: 5.640 min  
 Delta R.T.: -0.006 min  
 Response: 291648  
 Conc: 4.01 ng/ml

Instrument :  
 ECD\_P  
 ClientSampleId :  
 TP-69



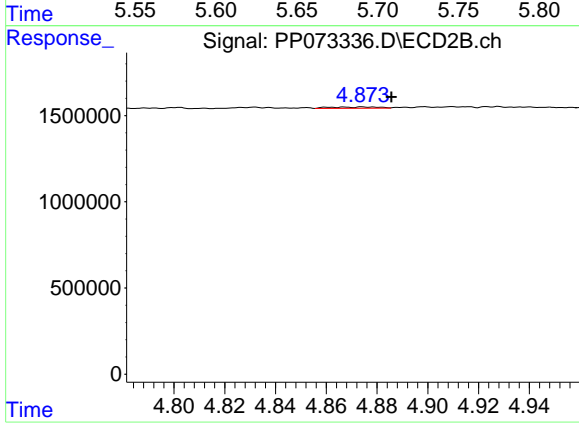
#3 AR-1016-1

R.T.: 4.874 min  
 Delta R.T.: 0.007 min  
 Response: 99856  
 Conc: 1.45 ng/ml



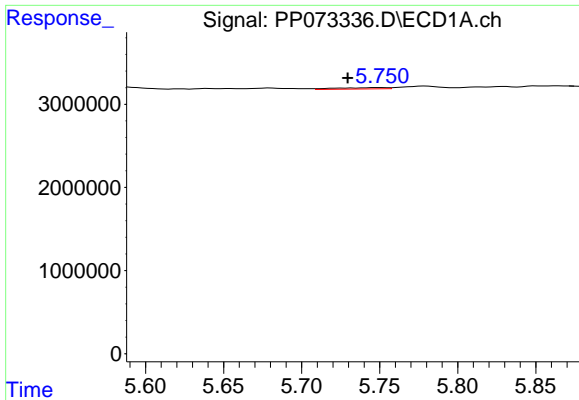
#4 AR-1016-2

R.T.: 5.680 min  
 Delta R.T.: 0.013 min  
 Response: 518362  
 Conc: 4.98 ng/ml



#4 AR-1016-2

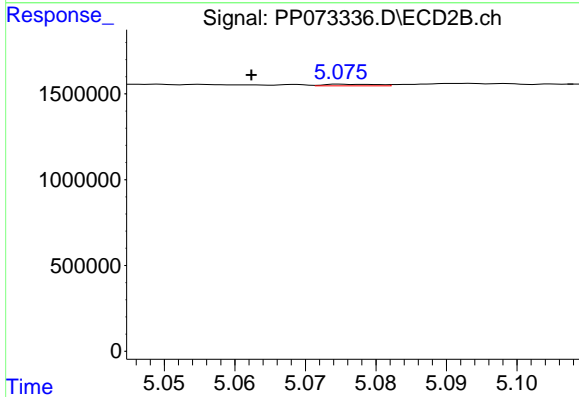
R.T.: 4.874 min  
 Delta R.T.: -0.011 min  
 Response: 99856  
 Conc: 0.99 ng/ml



#5 AR-1016-3

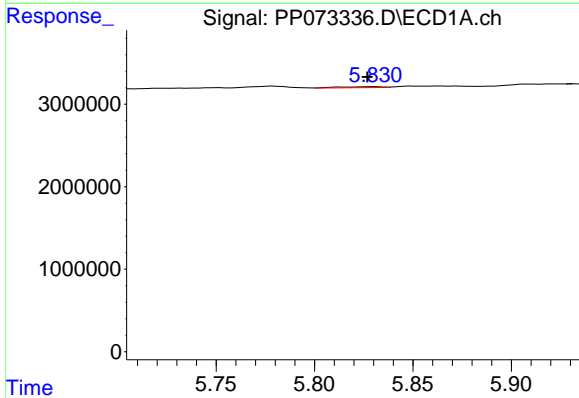
R.T.: 5.750 min  
 Delta R.T.: 0.021 min  
 Response: 384334  
 Conc: 5.88 ng/ml

Instrument :  
 ECD\_P  
 ClientSampleId :  
 TP-69



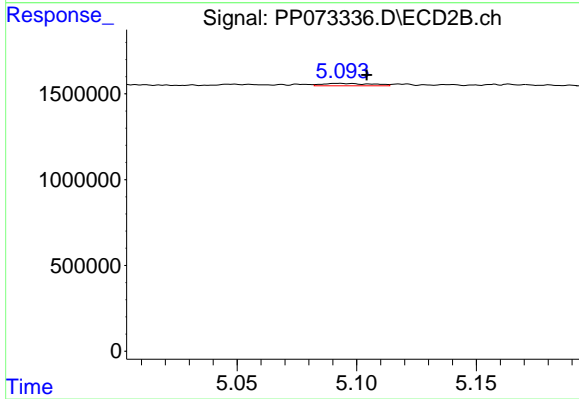
#5 AR-1016-3

R.T.: 5.076 min  
 Delta R.T.: 0.013 min  
 Response: 48549  
 Conc: 0.89 ng/ml



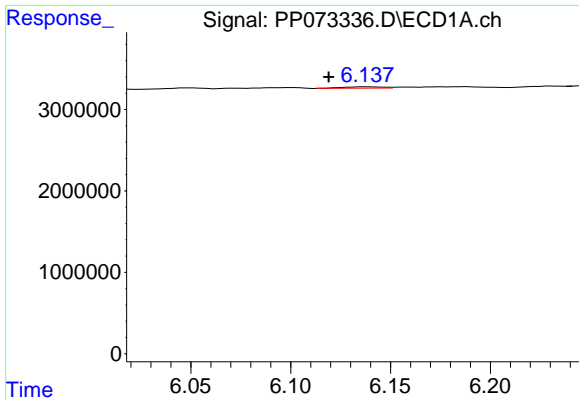
#6 AR-1016-4

R.T.: 5.831 min  
 Delta R.T.: 0.004 min  
 Response: 186758  
 Conc: 3.57 ng/ml



#6 AR-1016-4

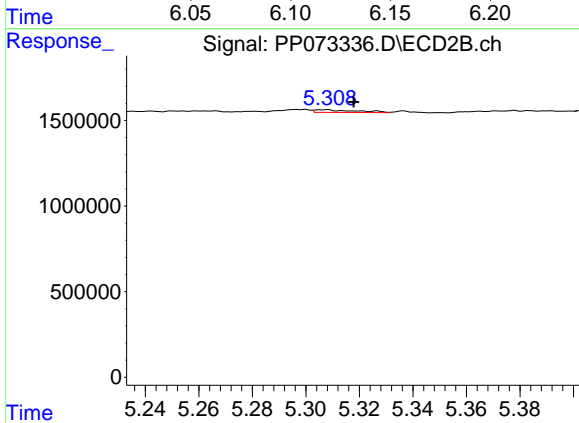
R.T.: 5.092 min  
 Delta R.T.: -0.012 min  
 Response: 199374  
 Conc: 4.48 ng/ml



#7 AR-1016-5

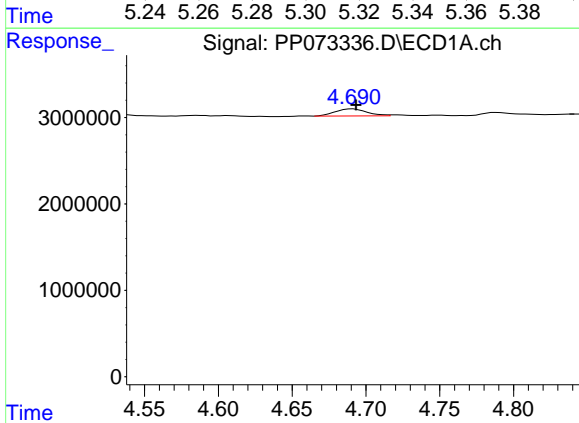
R.T.: 6.138 min  
 Delta R.T.: 0.019 min  
 Response: 233534  
 Conc: 4.67 ng/ml

Instrument : ECD\_P  
 ClientSampleId : TP-69



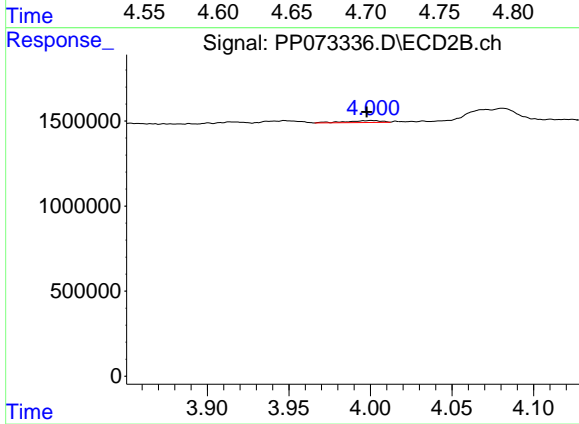
#7 AR-1016-5

R.T.: 5.307 min  
 Delta R.T.: -0.011 min  
 Response: 161008  
 Conc: 2.91 ng/ml



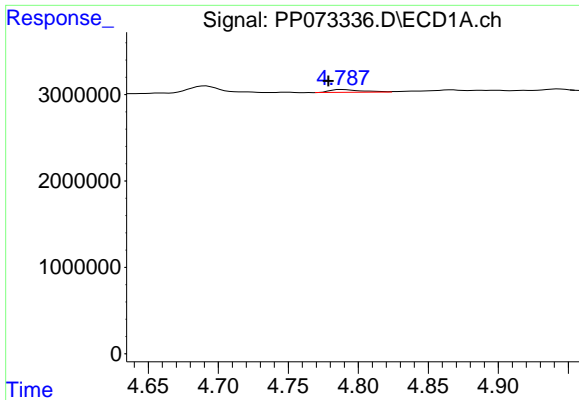
#8 AR-1221-1

R.T.: 4.691 min  
 Delta R.T.: -0.002 min  
 Response: 1208293  
 Conc: 49.00 ng/ml



#8 AR-1221-1

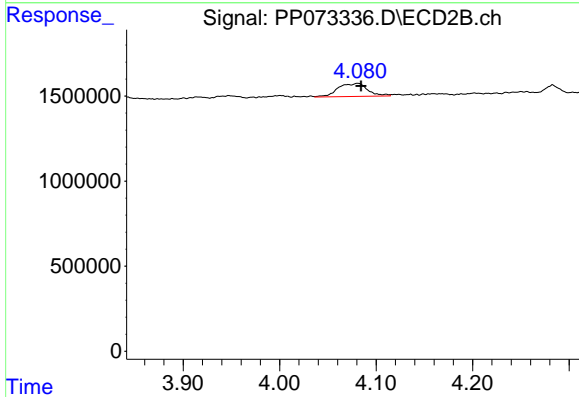
R.T.: 4.001 min  
 Delta R.T.: 0.003 min  
 Response: 174637  
 Conc: 6.50 ng/ml



#9 AR-1221-2

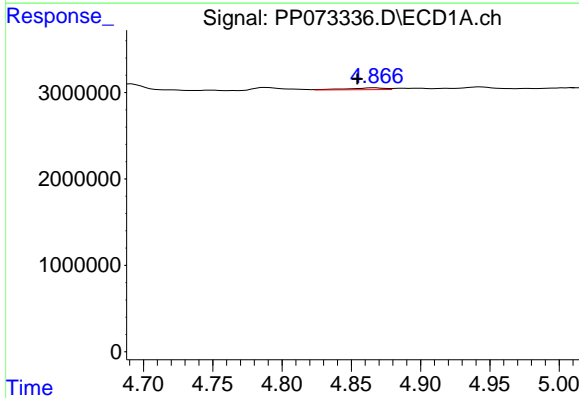
R.T.: 4.789 min  
 Delta R.T.: 0.010 min  
 Response: 531126  
 Conc: 26.32 ng/ml

Instrument :  
 ECD\_P  
 ClientSampleId :  
 TP-69



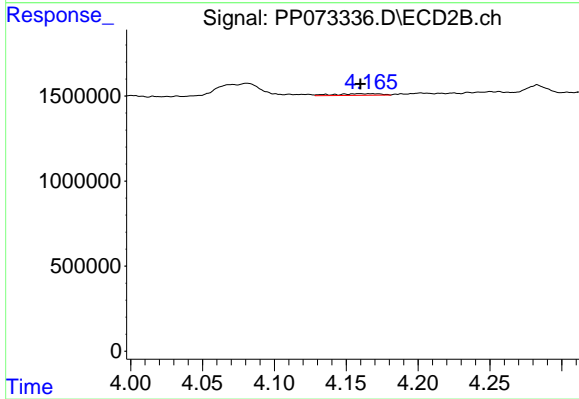
#9 AR-1221-2

R.T.: 4.081 min  
 Delta R.T.: -0.004 min  
 Response: 1655507  
 Conc: 82.01 ng/ml



#10 AR-1221-3

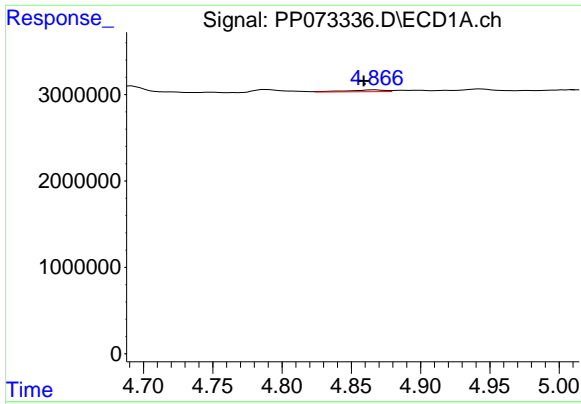
R.T.: 4.867 min  
 Delta R.T.: 0.013 min  
 Response: 412924  
 Conc: 6.71 ng/ml



#10 AR-1221-3

R.T.: 4.159 min  
 Delta R.T.: 0.000 min  
 Response: 207839  
 Conc: 3.54 ng/ml

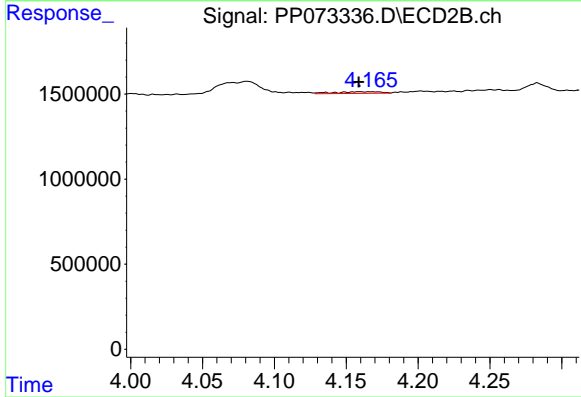




#11 AR-1232-1

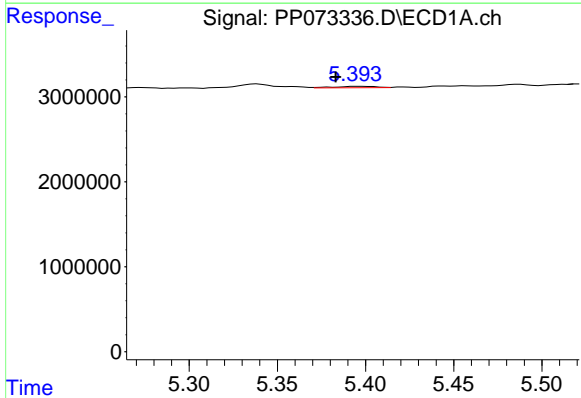
R.T.: 4.867 min  
 Delta R.T.: 0.008 min  
 Response: 412924  
 Conc: 8.79 ng/ml

Instrument :  
 ECD\_P  
 ClientSampleId :  
 TP-69



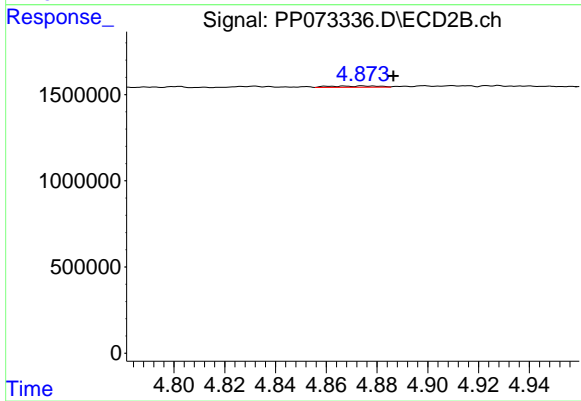
#11 AR-1232-1

R.T.: 4.159 min  
 Delta R.T.: 0.000 min  
 Response: 207839  
 Conc: 4.56 ng/ml



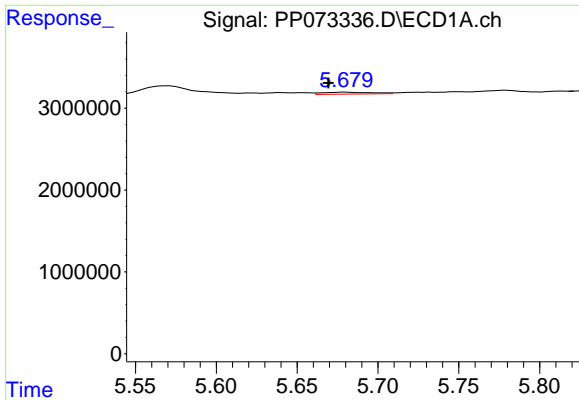
#12 AR-1232-2

R.T.: 5.395 min  
 Delta R.T.: 0.012 min  
 Response: 269100  
 Conc: 12.03 ng/ml



#12 AR-1232-2

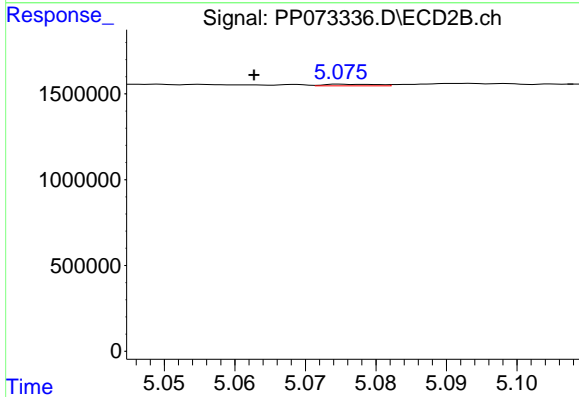
R.T.: 4.874 min  
 Delta R.T.: -0.012 min  
 Response: 99856  
 Conc: 2.16 ng/ml



#13 AR-1232-3

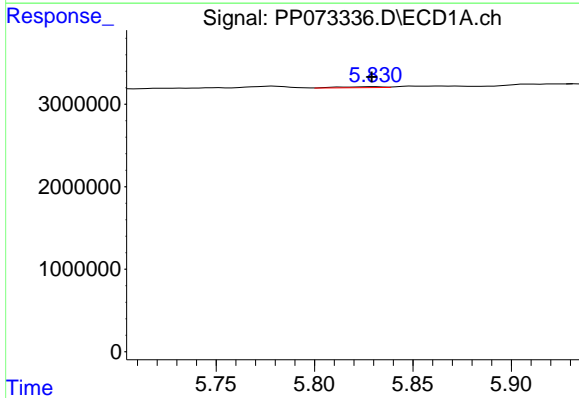
R.T.: 5.680 min  
 Delta R.T.: 0.011 min  
 Response: 518362  
 Conc: 10.05 ng/ml

Instrument :  
 ECD\_P  
 ClientSampleId :  
 TP-69



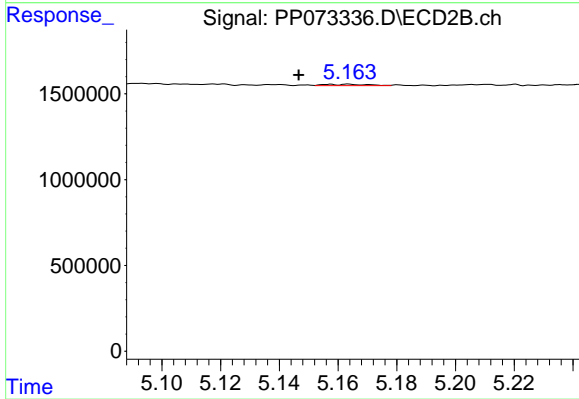
#13 AR-1232-3

R.T.: 5.076 min  
 Delta R.T.: 0.013 min  
 Response: 48549  
 Conc: 1.98 ng/ml



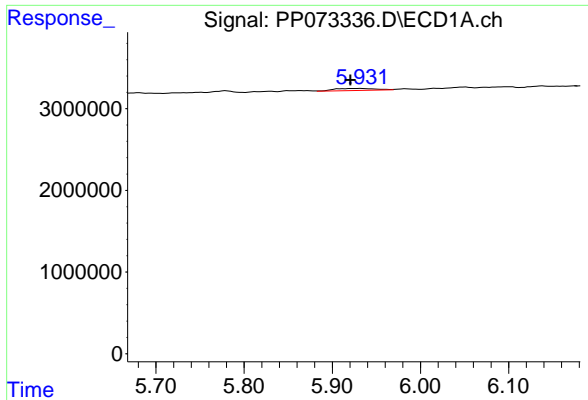
#14 AR-1232-4

R.T.: 5.831 min  
 Delta R.T.: 0.002 min  
 Response: 186758  
 Conc: 7.24 ng/ml



#14 AR-1232-4

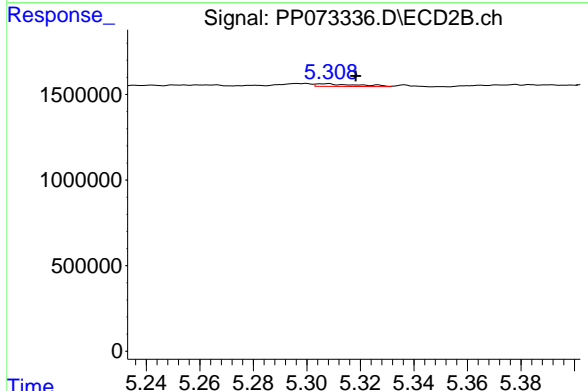
R.T.: 5.164 min  
 Delta R.T.: 0.017 min  
 Response: 83824  
 Conc: 3.88 ng/ml



#15 AR-1232-5

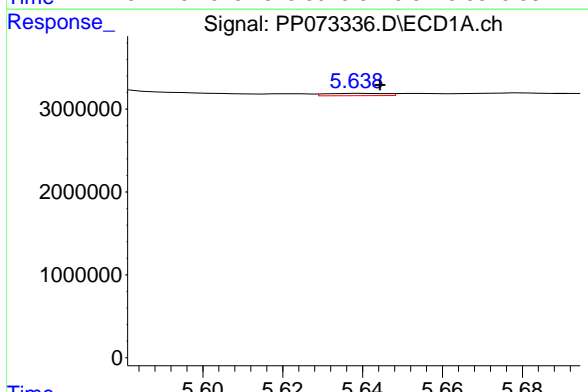
R.T.: 5.932 min  
 Delta R.T.: 0.012 min  
 Response: 831388  
 Conc: 23.31 ng/ml

Instrument :  
 ECD\_P  
 ClientSampleId :  
 TP-69



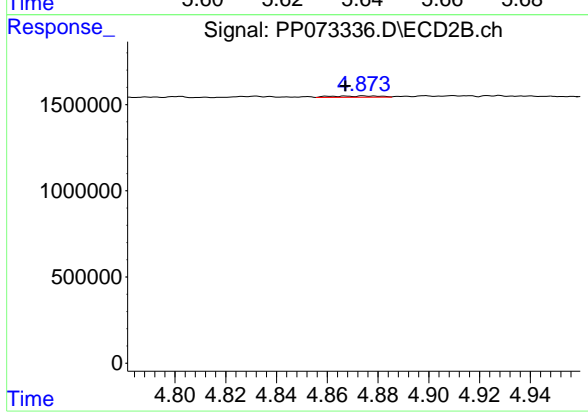
#15 AR-1232-5

R.T.: 5.307 min  
 Delta R.T.: -0.011 min  
 Response: 161008  
 Conc: 7.04 ng/ml



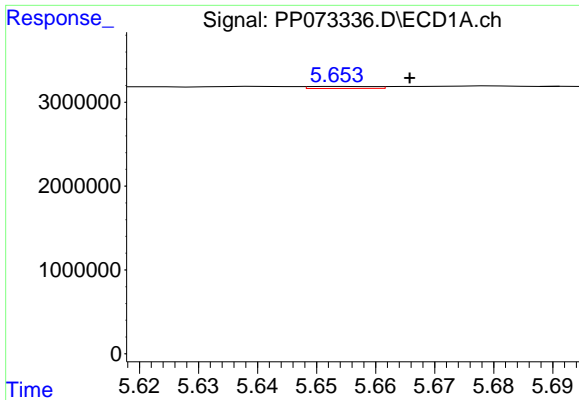
#16 AR-1242-1

R.T.: 5.640 min  
 Delta R.T.: -0.005 min  
 Response: 291648  
 Conc: 4.99 ng/ml



#16 AR-1242-1

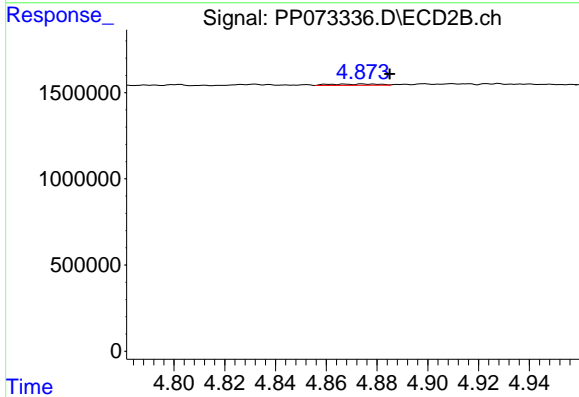
R.T.: 4.874 min  
 Delta R.T.: 0.007 min  
 Response: 99856  
 Conc: 1.81 ng/ml



#17 AR-1242-2

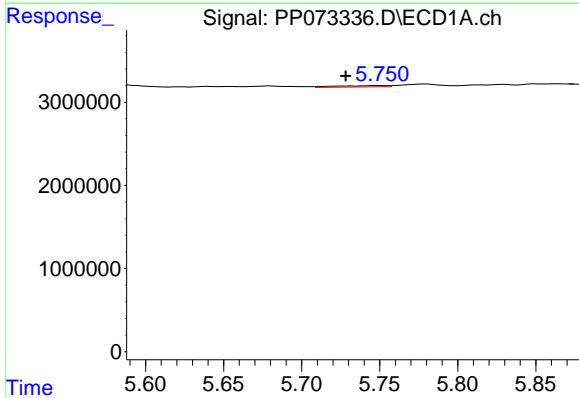
R.T.: 5.654 min  
 Delta R.T.: -0.011 min  
 Response: 178964  
 Conc: 2.07 ng/ml

Instrument :  
 ECD\_P  
 ClientSampleId :  
 TP-69



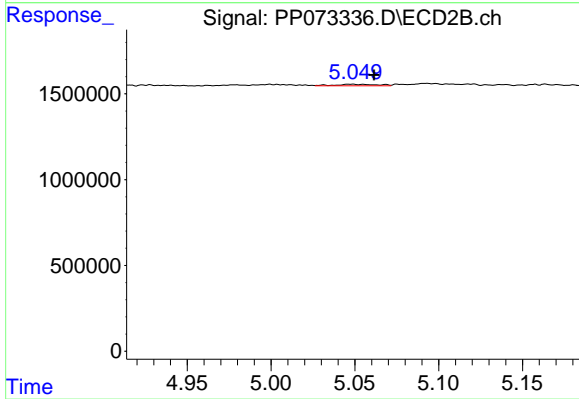
#17 AR-1242-2

R.T.: 4.874 min  
 Delta R.T.: -0.011 min  
 Response: 99856  
 Conc: 1.26 ng/ml



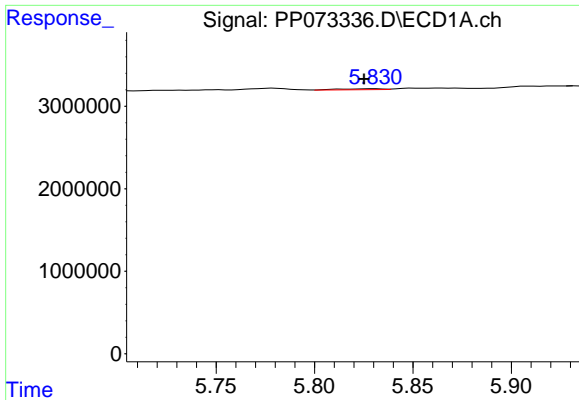
#18 AR-1242-3

R.T.: 5.750 min  
 Delta R.T.: 0.022 min  
 Response: 384334  
 Conc: 7.29 ng/ml



#18 AR-1242-3

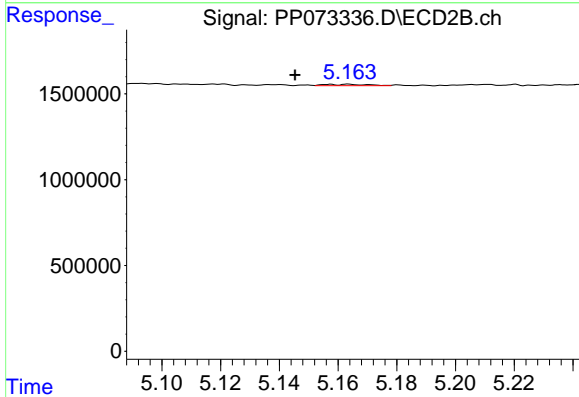
R.T.: 5.048 min  
 Delta R.T.: -0.014 min  
 Response: 154519  
 Conc: 3.57 ng/ml



#19 AR-1242-4

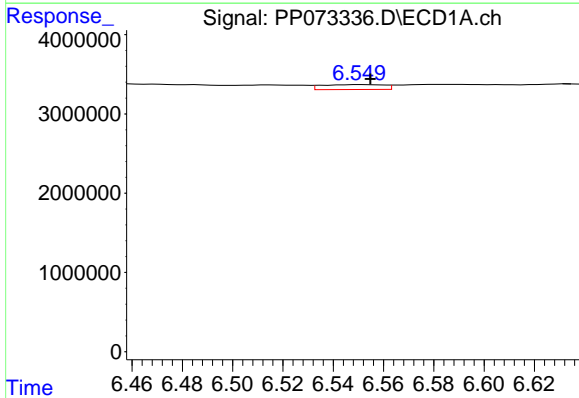
R.T.: 5.831 min  
 Delta R.T.: 0.005 min  
 Response: 186758  
 Conc: 4.25 ng/ml

Instrument :  
 ECD\_P  
 ClientSampleId :  
 TP-69



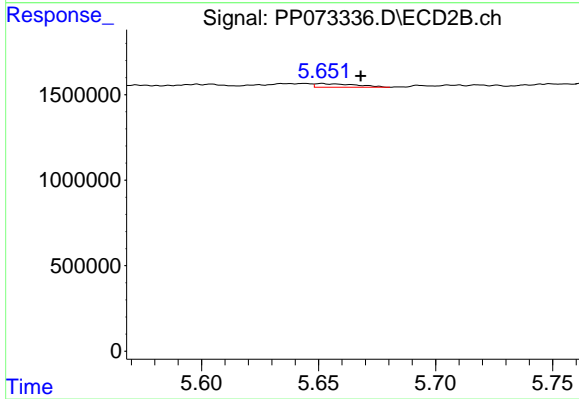
#19 AR-1242-4

R.T.: 5.164 min  
 Delta R.T.: 0.018 min  
 Response: 83824  
 Conc: 2.02 ng/ml



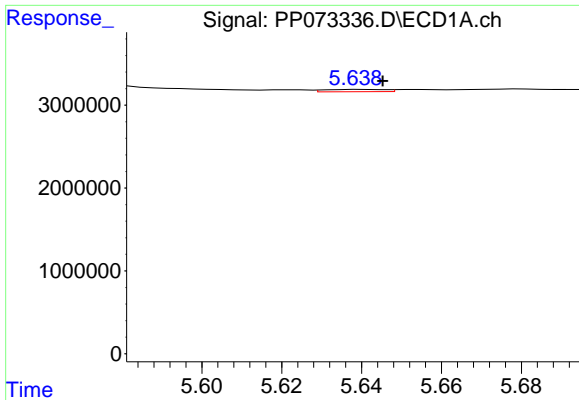
#20 AR-1242-5

R.T.: 6.551 min  
 Delta R.T.: -0.004 min  
 Response: 1068530  
 Conc: 21.56 ng/ml



#20 AR-1242-5

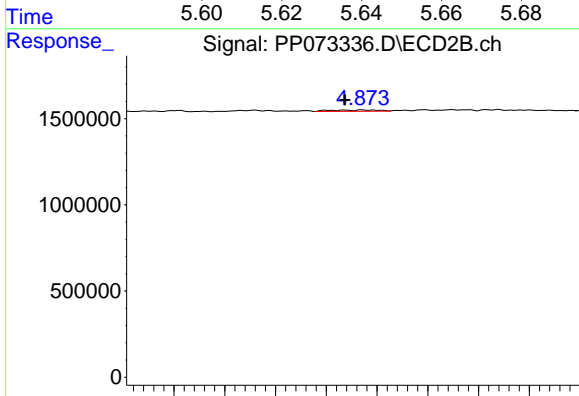
R.T.: 5.651 min  
 Delta R.T.: -0.017 min  
 Response: 257615  
 Conc: 4.90 ng/ml



#21 AR-1248-1

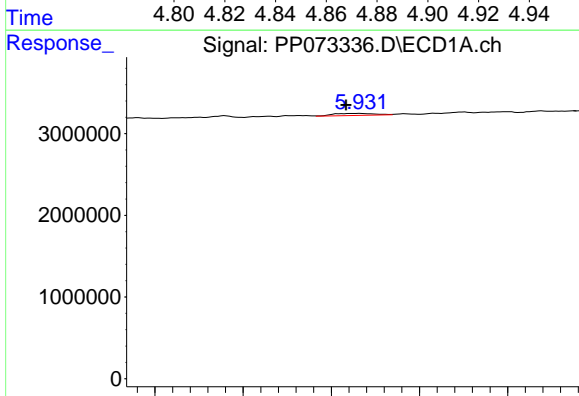
R.T.: 5.640 min  
 Delta R.T.: -0.006 min  
 Response: 291648  
 Conc: 6.13 ng/ml

Instrument :  
 ECD\_P  
 ClientSampleId :  
 TP-69



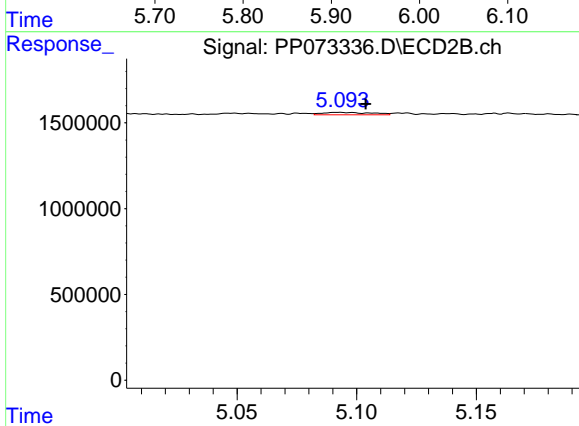
#21 AR-1248-1

R.T.: 4.874 min  
 Delta R.T.: 0.007 min  
 Response: 99856  
 Conc: 2.29 ng/ml



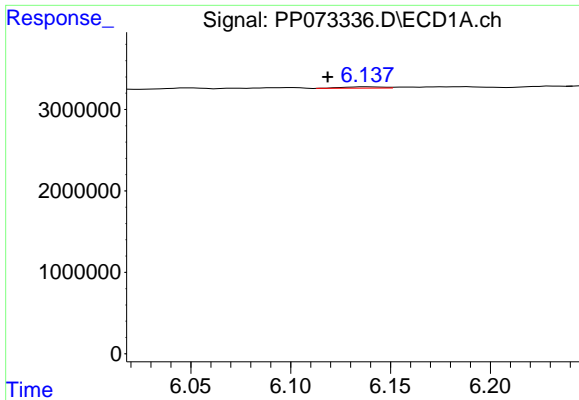
#22 AR-1248-2

R.T.: 5.932 min  
 Delta R.T.: 0.015 min  
 Response: 831388  
 Conc: 14.20 ng/ml



#22 AR-1248-2

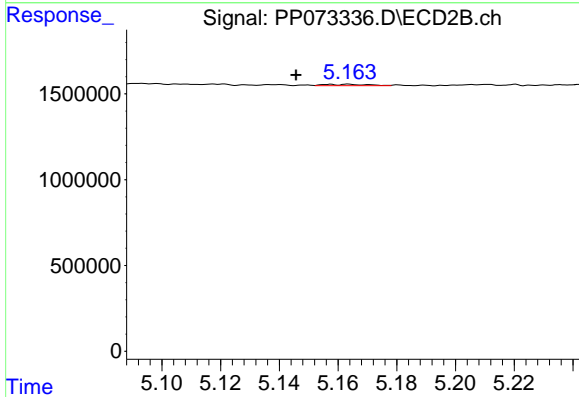
R.T.: 5.092 min  
 Delta R.T.: -0.012 min  
 Response: 199374  
 Conc: 3.40 ng/ml



#23 AR-1248-3

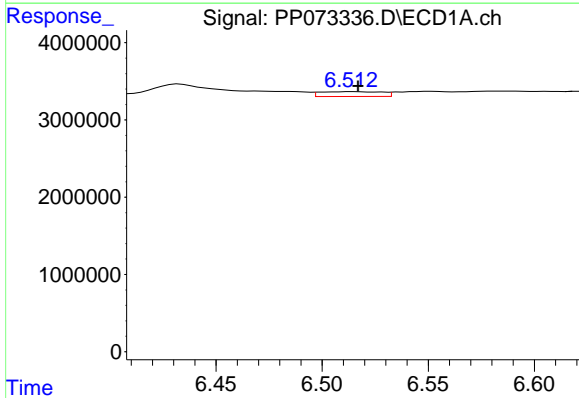
R.T.: 6.138 min  
 Delta R.T.: 0.020 min  
 Response: 233534  
 Conc: 3.58 ng/ml

Instrument :  
 ECD\_P  
 ClientSampleId :  
 TP-69



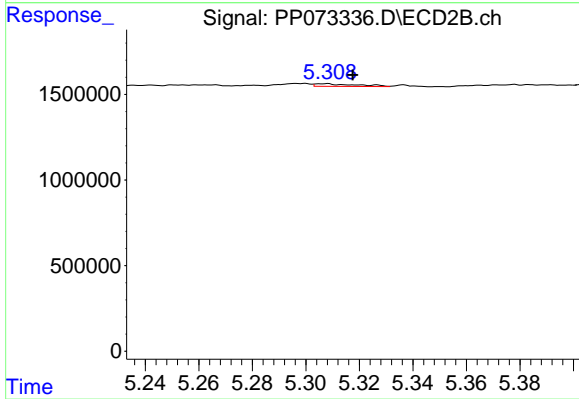
#23 AR-1248-3

R.T.: 5.164 min  
 Delta R.T.: 0.018 min  
 Response: 83824  
 Conc: 1.38 ng/ml



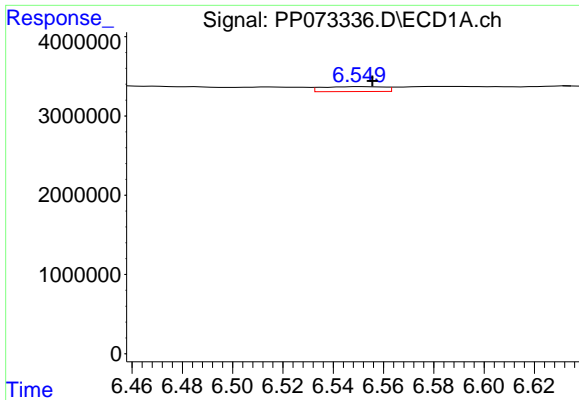
#24 AR-1248-4

R.T.: 6.514 min  
 Delta R.T.: -0.003 min  
 Response: 1265285  
 Conc: 14.87 ng/ml



#24 AR-1248-4

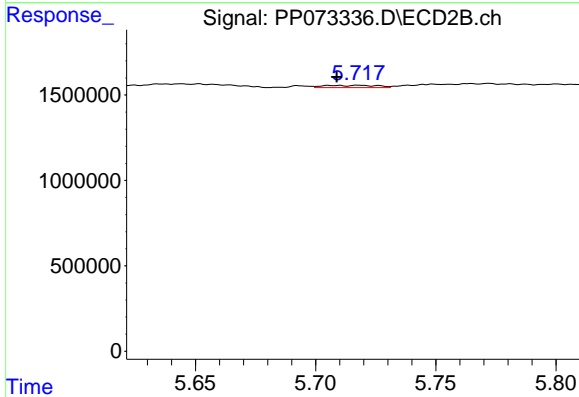
R.T.: 5.307 min  
 Delta R.T.: -0.011 min  
 Response: 161008  
 Conc: 2.30 ng/ml



#25 AR-1248-5

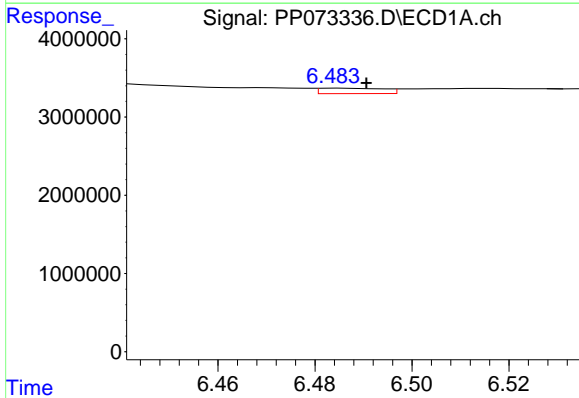
R.T.: 6.551 min  
 Delta R.T.: -0.005 min  
 Response: 1068530  
 Conc: 12.77 ng/ml

Instrument :  
 ECD\_P  
 ClientSampleId :  
 TP-69



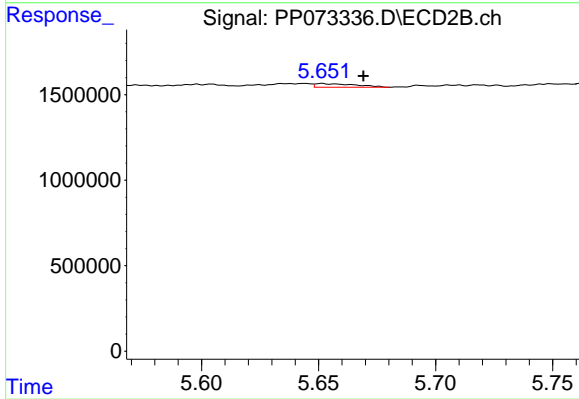
#25 AR-1248-5

R.T.: 5.718 min  
 Delta R.T.: 0.009 min  
 Response: 209996  
 Conc: 2.96 ng/ml



#26 AR-1254-1

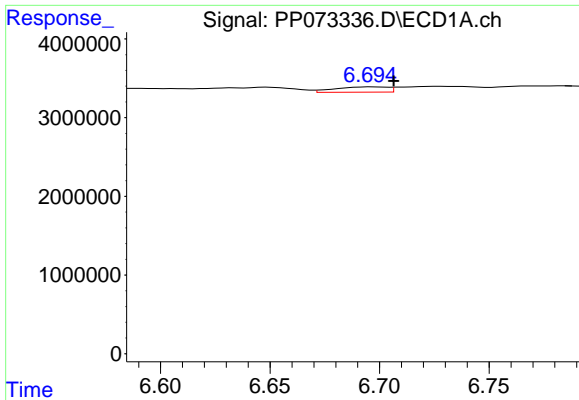
R.T.: 6.484 min  
 Delta R.T.: -0.006 min  
 Response: 630110  
 Conc: 7.49 ng/ml



#26 AR-1254-1

R.T.: 5.651 min  
 Delta R.T.: -0.018 min  
 Response: 257615  
 Conc: 2.35 ng/ml

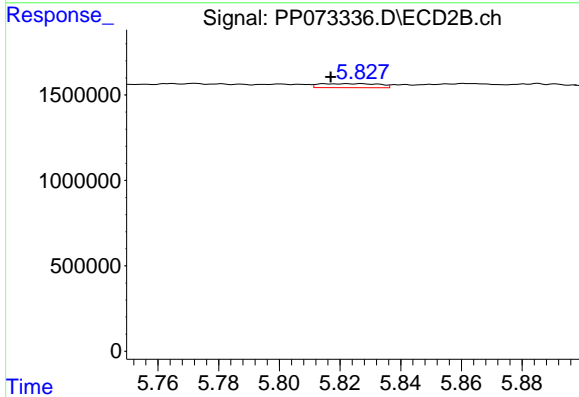




#27 AR-1254-2

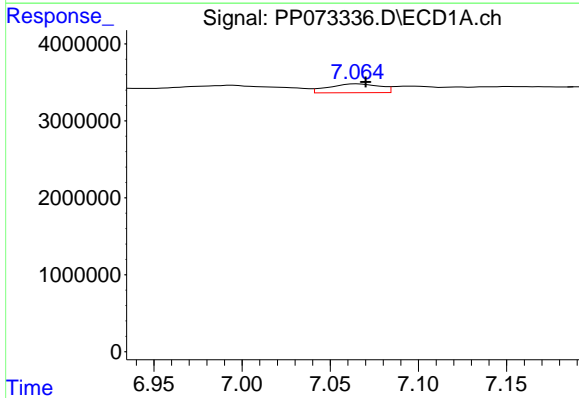
R.T.: 6.697 min  
 Delta R.T.: -0.010 min  
 Response: 1126276  
 Conc: 8.98 ng/ml

Instrument :  
 ECD\_P  
 ClientSampleId :  
 TP-69



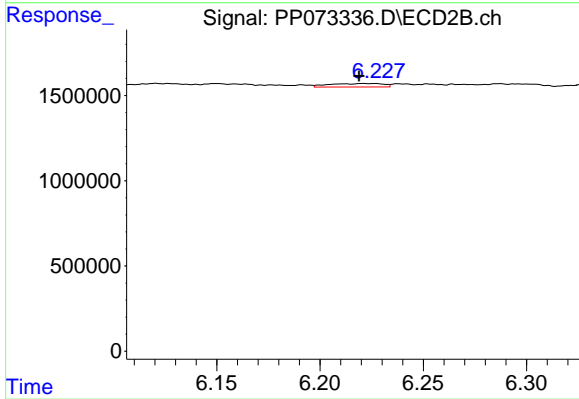
#27 AR-1254-2

R.T.: 5.827 min  
 Delta R.T.: 0.010 min  
 Response: 321217  
 Conc: 3.40 ng/ml



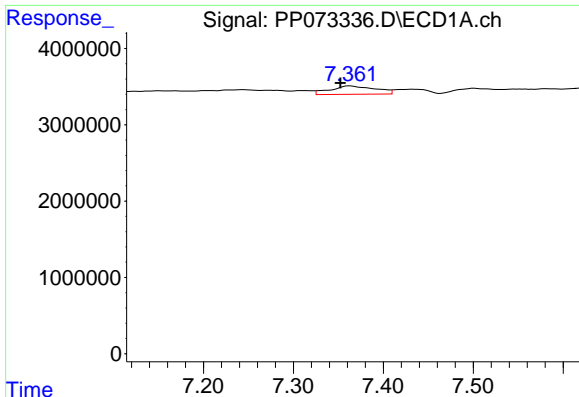
#28 AR-1254-3

R.T.: 7.065 min  
 Delta R.T.: -0.005 min  
 Response: 2314286  
 Conc: 17.64 ng/ml



#28 AR-1254-3

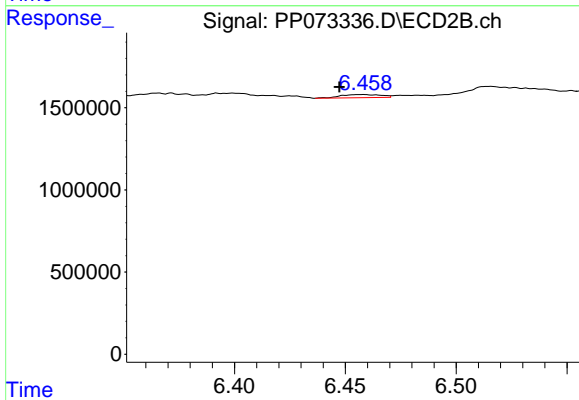
R.T.: 6.227 min  
 Delta R.T.: 0.008 min  
 Response: 374194  
 Conc: 2.54 ng/ml



#29 AR-1254-4

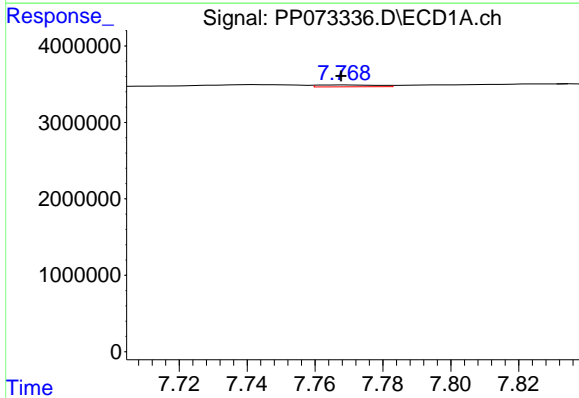
R.T.: 7.363 min  
 Delta R.T.: 0.011 min  
 Response: 3821948  
 Conc: 31.91 ng/ml

Instrument :  
 ECD\_P  
 ClientSampleId :  
 TP-69



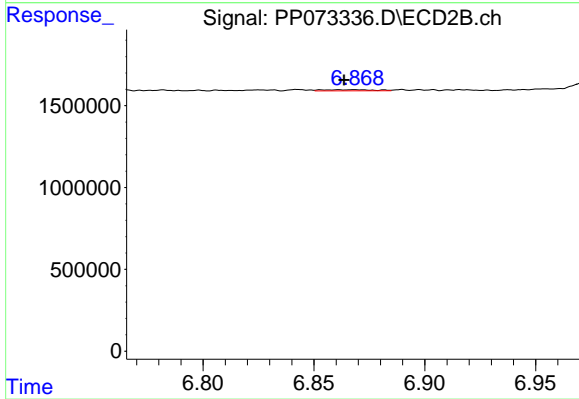
#29 AR-1254-4

R.T.: 6.458 min  
 Delta R.T.: 0.010 min  
 Response: 244885  
 Conc: 2.52 ng/ml



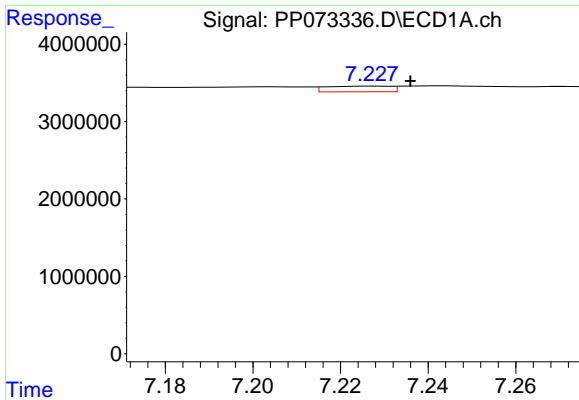
#30 AR-1254-5

R.T.: 7.769 min  
 Delta R.T.: 0.001 min  
 Response: 301051  
 Conc: 2.63 ng/ml



#30 AR-1254-5

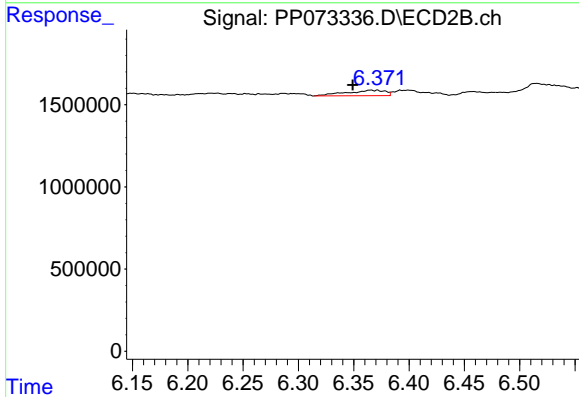
R.T.: 6.868 min  
 Delta R.T.: 0.005 min  
 Response: 106006  
 Conc: 0.82 ng/ml



#31 AR-1260-1

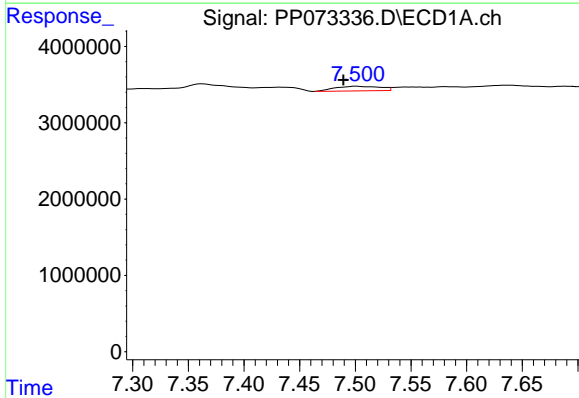
R.T.: 7.228 min  
 Delta R.T.: -0.008 min  
 Response: 746670  
 Conc: 8.46 ng/ml

Instrument :  
 ECD\_P  
 ClientSampleId :  
 TP-69



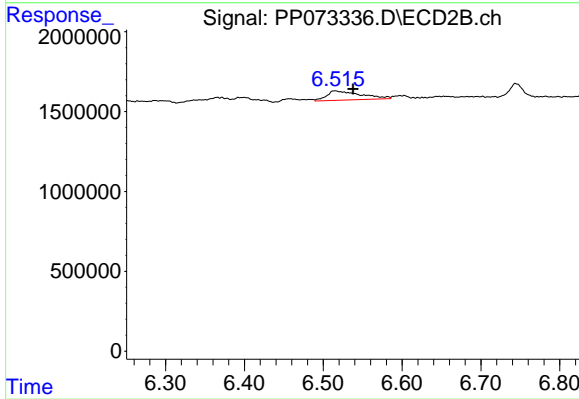
#31 AR-1260-1

R.T.: 6.371 min  
 Delta R.T.: 0.022 min  
 Response: 809267  
 Conc: 8.54 ng/ml



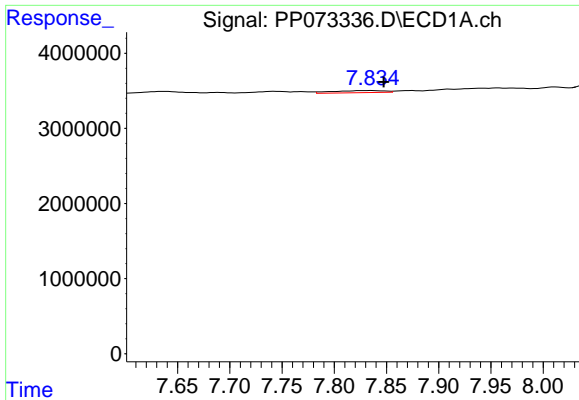
#32 AR-1260-2

R.T.: 7.501 min  
 Delta R.T.: 0.012 min  
 Response: 1701606  
 Conc: 12.52 ng/ml



#32 AR-1260-2

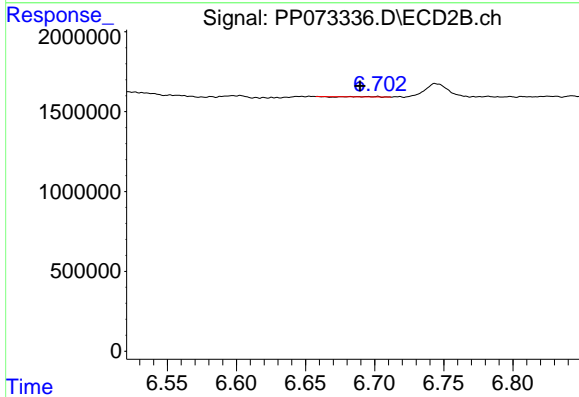
R.T.: 6.515 min  
 Delta R.T.: -0.023 min  
 Response: 1765144  
 Conc: 15.16 ng/ml



#33 AR-1260-3

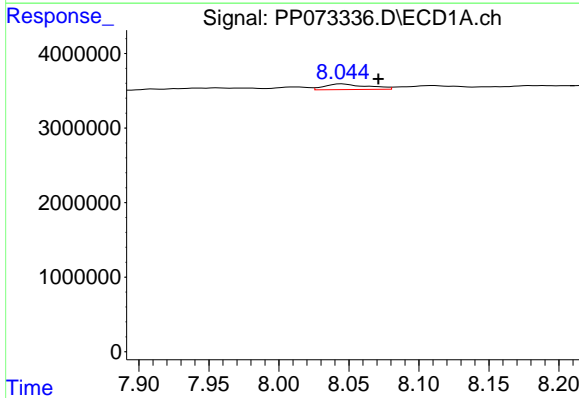
R.T.: 7.835 min  
 Delta R.T.: -0.012 min  
 Response: 960631  
 Conc: 8.42 ng/ml

Instrument :  
 ECD\_P  
 ClientSampleId :  
 TP-69



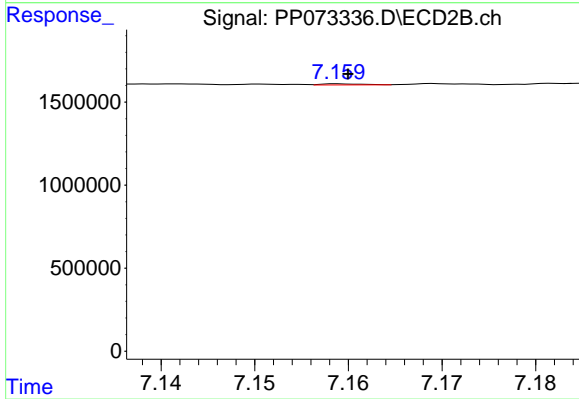
#33 AR-1260-3

R.T.: 6.702 min  
 Delta R.T.: 0.013 min  
 Response: 5904  
 Conc: 0.06 ng/ml



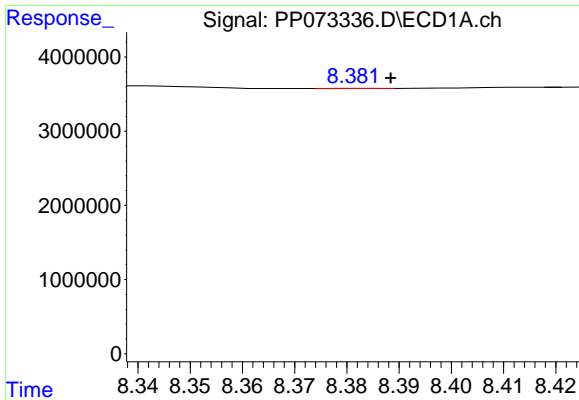
#34 AR-1260-4

R.T.: 8.045 min  
 Delta R.T.: -0.026 min  
 Response: 1608325  
 Conc: 15.61 ng/ml



#34 AR-1260-4

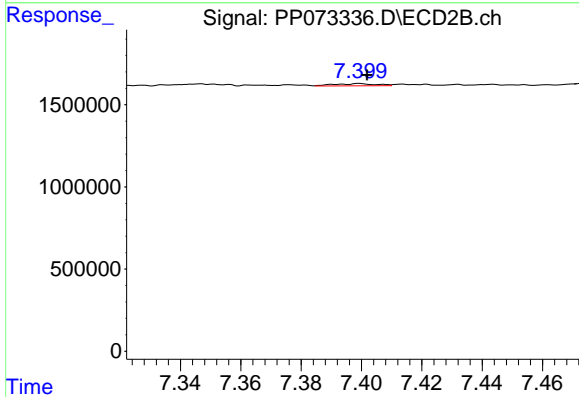
R.T.: 7.160 min  
 Delta R.T.: 0.000 min  
 Response: 20860  
 Conc: 0.24 ng/ml



#35 AR-1260-5

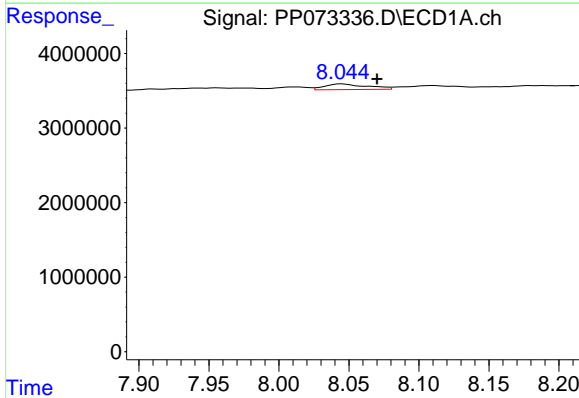
R.T.: 8.382 min  
 Delta R.T.: -0.006 min  
 Response: 19459  
 Conc: 0.08 ng/ml

Instrument :  
 ECD\_P  
 ClientSampleId :  
 TP-69



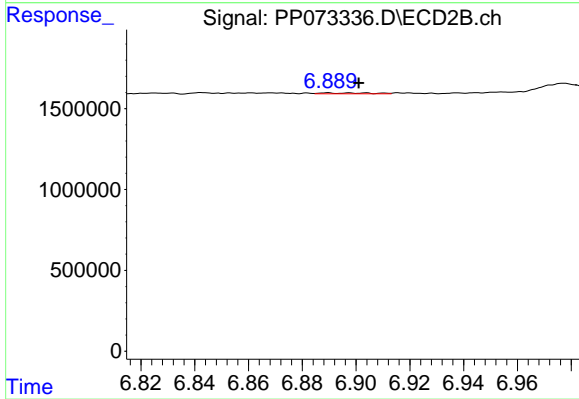
#35 AR-1260-5

R.T.: 7.399 min  
 Delta R.T.: -0.002 min  
 Response: 133051  
 Conc: 0.62 ng/ml



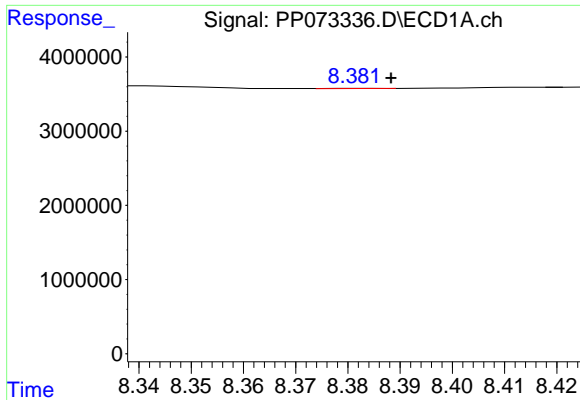
#36 AR-1262-1

R.T.: 8.045 min  
 Delta R.T.: -0.025 min  
 Response: 1608325  
 Conc: 10.87 ng/ml



#36 AR-1262-1

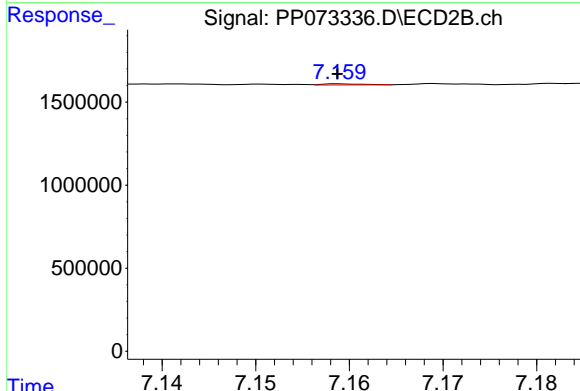
R.T.: 6.889 min  
 Delta R.T.: -0.012 min  
 Response: 71374  
 Conc: 0.49 ng/ml



#37 AR-1262-2

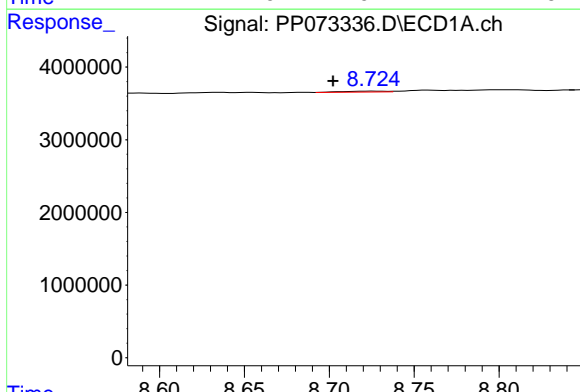
R.T.: 8.382 min  
 Delta R.T.: -0.006 min  
 Response: 19459  
 Conc: 0.06 ng/ml

Instrument :  
 ECD\_P  
 ClientSampleId :  
 TP-69



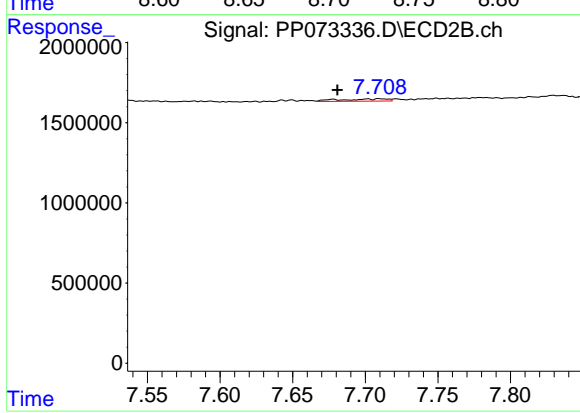
#37 AR-1262-2

R.T.: 7.160 min  
 Delta R.T.: 0.000 min  
 Response: 20860  
 Conc: 0.17 ng/ml



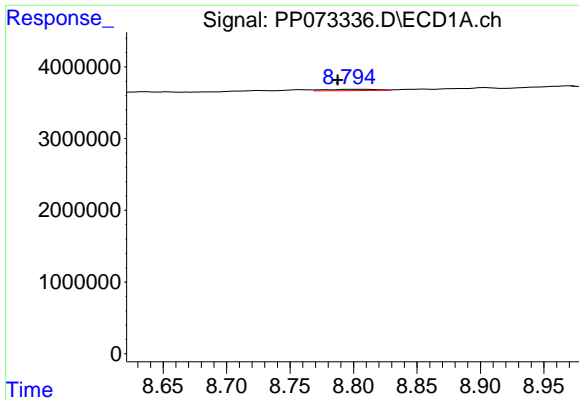
#38 AR-1262-3

R.T.: 8.726 min  
 Delta R.T.: 0.024 min  
 Response: 227329  
 Conc: 1.06 ng/ml



#38 AR-1262-3

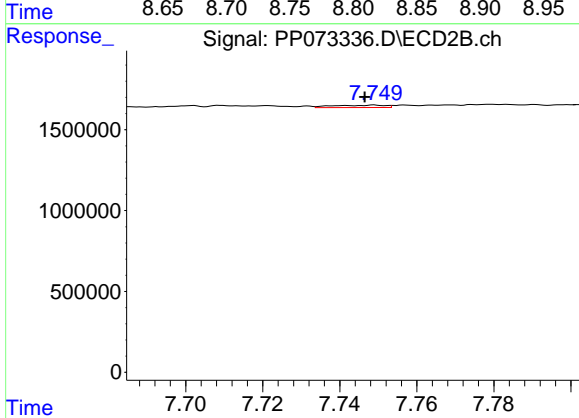
R.T.: 7.710 min  
 Delta R.T.: 0.029 min  
 Response: 321978  
 Conc: 2.86 ng/ml



#39 AR-1262-4

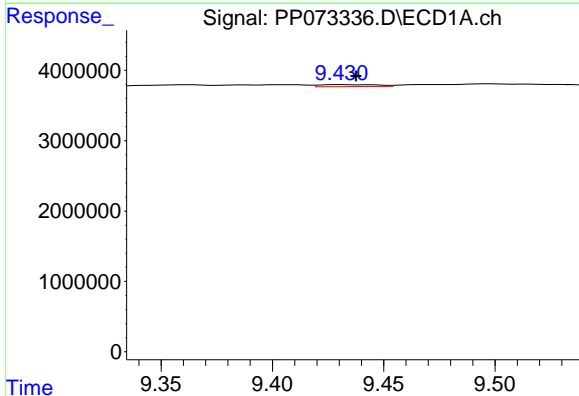
R.T.: 8.798 min  
 Delta R.T.: 0.010 min  
 Response: 537709  
 Conc: 3.41 ng/ml

Instrument :  
 ECD\_P  
 ClientSampleId :  
 TP-69



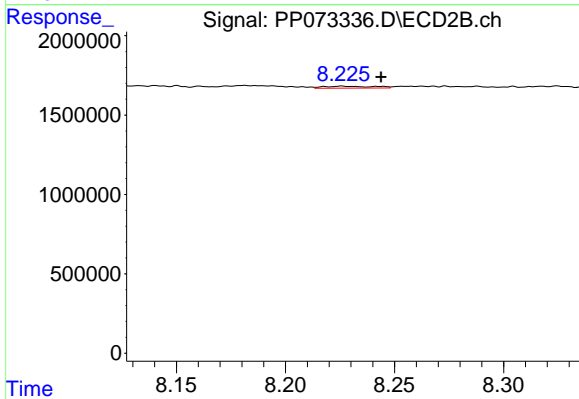
#39 AR-1262-4

R.T.: 7.749 min  
 Delta R.T.: 0.002 min  
 Response: 139348  
 Conc: 0.76 ng/ml



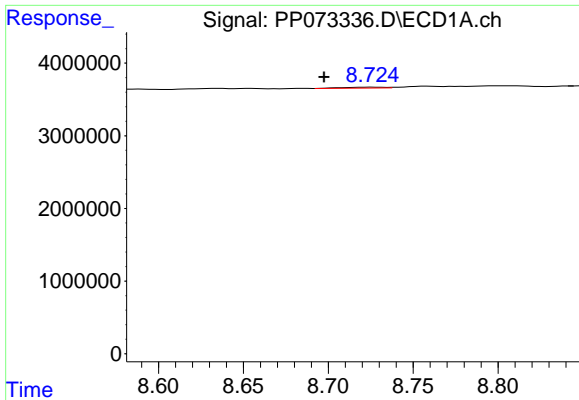
#40 AR-1262-5

R.T.: 9.431 min  
 Delta R.T.: -0.007 min  
 Response: 500974  
 Conc: 4.48 ng/ml



#40 AR-1262-5

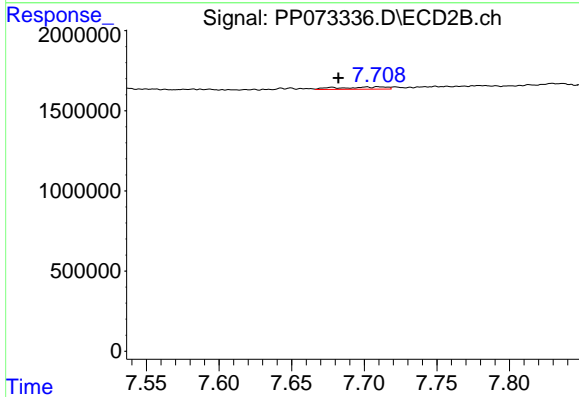
R.T.: 8.227 min  
 Delta R.T.: -0.017 min  
 Response: 194370  
 Conc: 2.24 ng/ml



#41 AR-1268-1

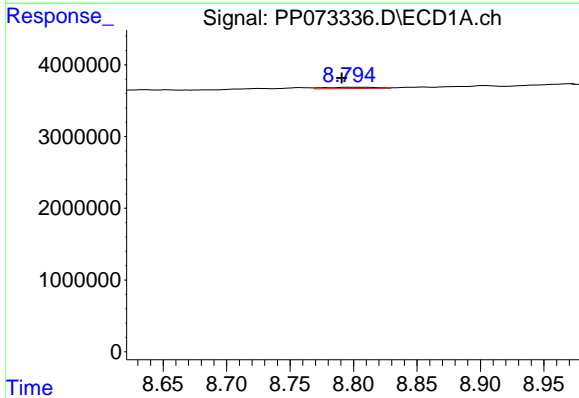
R.T.: 8.726 min  
 Delta R.T.: 0.028 min  
 Response: 227329  
 Conc: 0.64 ng/ml

Instrument :  
 ECD\_P  
 ClientSampleId :  
 TP-69



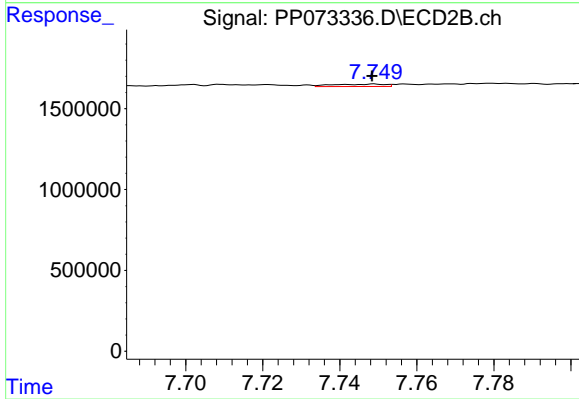
#41 AR-1268-1

R.T.: 7.710 min  
 Delta R.T.: 0.027 min  
 Response: 321978  
 Conc: 1.12 ng/ml



#42 AR-1268-2

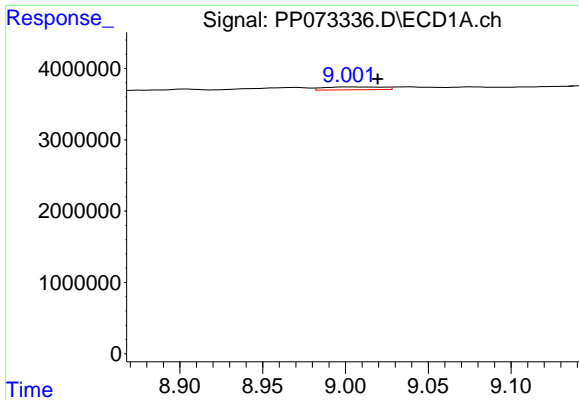
R.T.: 8.798 min  
 Delta R.T.: 0.007 min  
 Response: 537709  
 Conc: 1.76 ng/ml



#42 AR-1268-2

R.T.: 7.749 min  
 Delta R.T.: 0.000 min  
 Response: 139348  
 Conc: 0.54 ng/ml

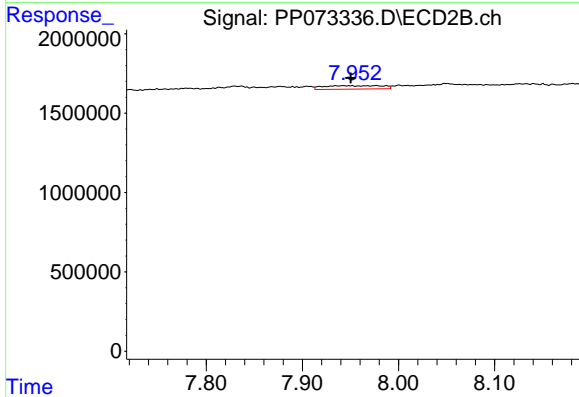




#43 AR-1268-3

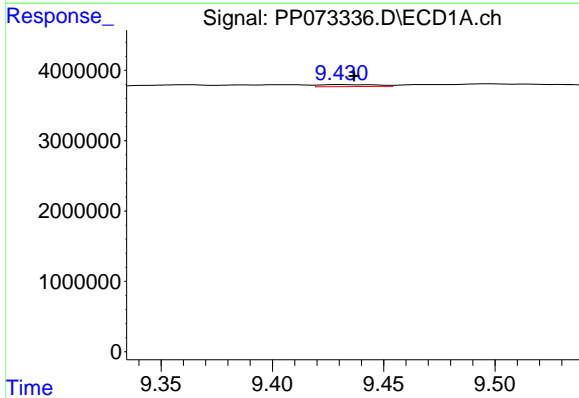
R.T.: 9.002 min  
 Delta R.T.: -0.018 min  
 Response: 995277  
 Conc: 3.75 ng/ml

Instrument :  
 ECD\_P  
 ClientSampleId :  
 TP-69



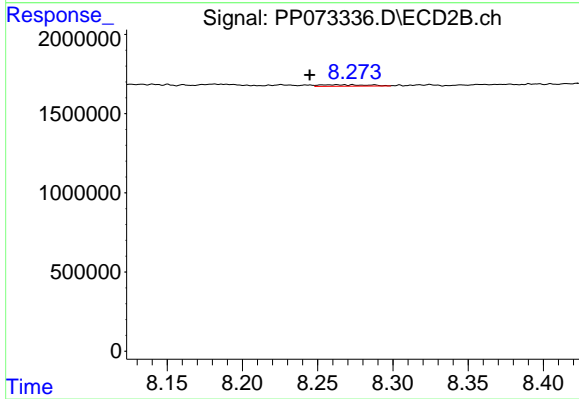
#43 AR-1268-3

R.T.: 7.977 min  
 Delta R.T.: 0.026 min  
 Response: 919065  
 Conc: 4.26 ng/ml



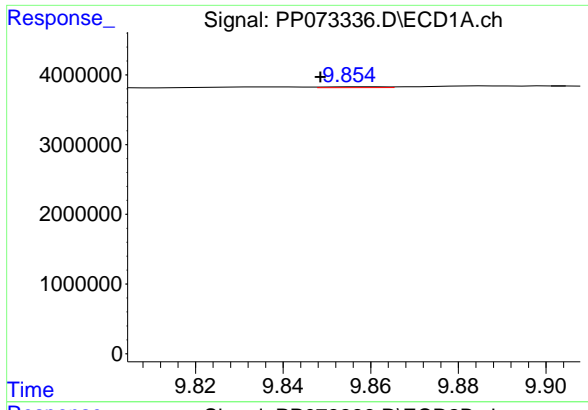
#44 AR-1268-4

R.T.: 9.431 min  
 Delta R.T.: -0.006 min  
 Response: 500974  
 Conc: 4.28 ng/ml



#44 AR-1268-4

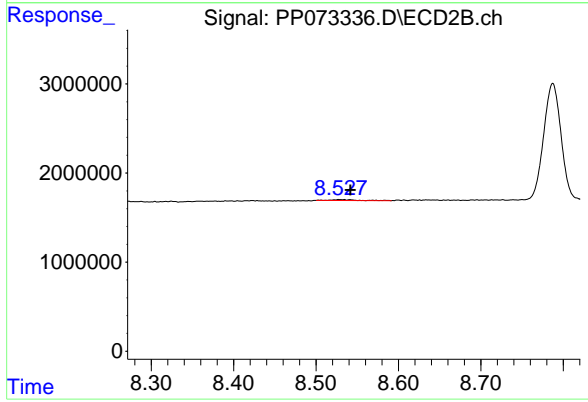
R.T.: 8.263 min  
 Delta R.T.: 0.018 min  
 Response: 210450  
 Conc: 2.23 ng/ml



#45 AR-1268-5

R.T.: 9.856 min  
 Delta R.T.: 0.008 min  
 Response: 117248  
 Conc: 0.16 ng/ml

Instrument :  
 ECD\_P  
 ClientSampleId :  
 TP-69



#45 AR-1268-5

R.T.: 8.529 min  
 Delta R.T.: -0.012 min  
 Response: 218858  
 Conc: 0.38 ng/ml