

Data Path : Z:\pestpcbsrv\HPCHEM1\ECD\_D\Data\PD061825\  
 Data File : PD089010.D  
 Signal(s) : Signal #1: ECD1A.ch Signal #2: ECD2B.ch  
 Acq On : 17 Jun 2025 19:44  
 Operator : AR\AJ  
 Sample : PTOXICV500  
 Misc :  
 ALS Vial : 22 Sample Multiplier: 1

Instrument :  
 ECD\_D  
 ClientSampleId :  
 ICVPD061825TOX

Integration File signal 1: autoint1.e  
 Integration File signal 2: autoint2.e  
 Quant Time: Jun 18 04:37:01 2025  
 Quant Method : Z:\pestpcbsrv\HPCHEM1\ECD\_D\Method\DTX061825.M  
 Quant Title : GC Extractables  
 QLast Update : Wed Jun 18 04:35:42 2025  
 Response via : Initial Calibration  
 Integrator: ChemStation

Volume Inj. : 1 µl  
 Signal #1 Phase : ZB-MR1 Signal #2 Phase: ZB-MR2  
 Signal #1 Info : 30M x 0.32mm x 0. Signal #2 Info : 30M x 0.32mm x 0.25µm

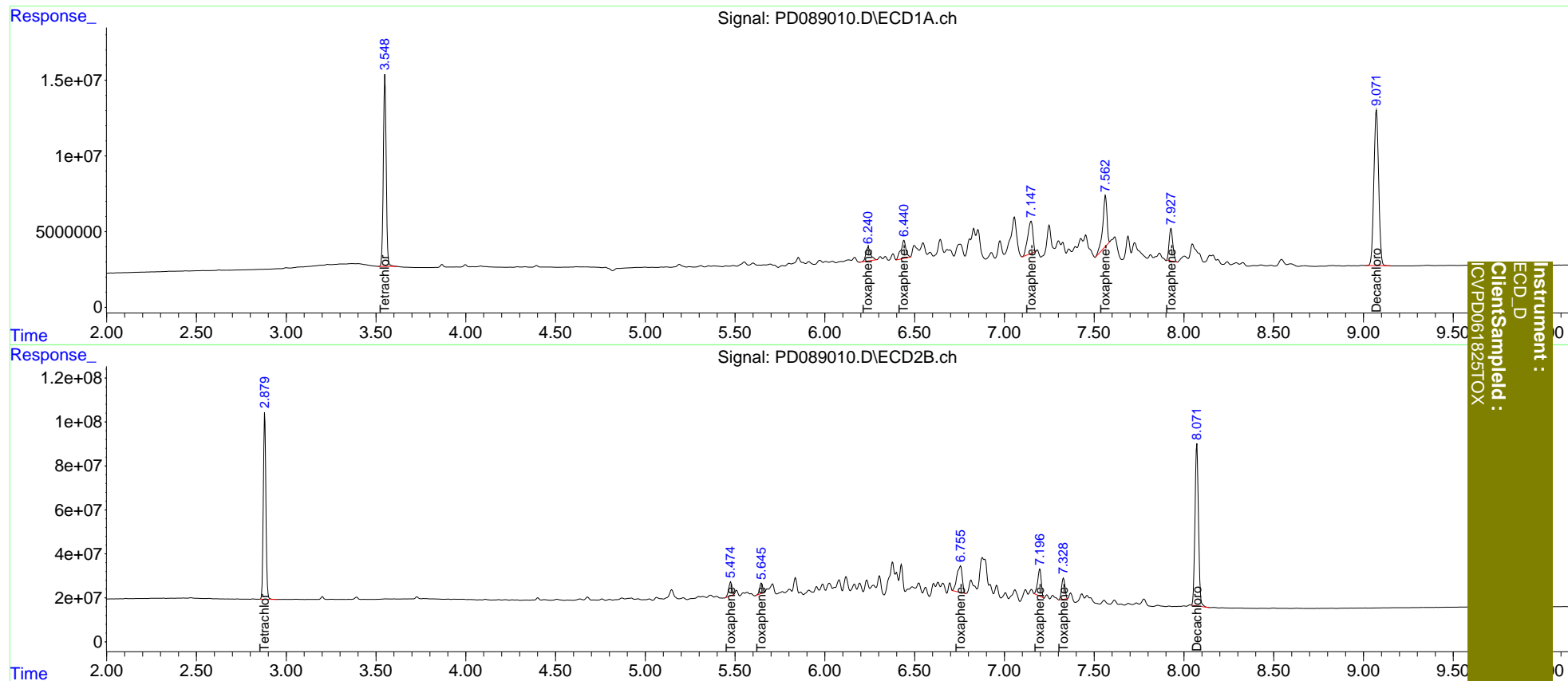
Compound	RT#1	RT#2	Resp#1	Resp#2	ng/ml	ng/ml
-----						
System Monitoring Compounds						
1) SA Tetrachlo...	3.550	2.881	140.5E6	849.8E6	49.126	48.618
7) SA Decachlor...	9.072	8.072	190.0E6	991.7E6	48.552	48.009
Target Compounds						
2) Toxaphene-1	6.241	5.475	16556024	76482668	496.105	468.012
3) Toxaphene-2	6.441	5.647	23088671	52728004	503.218	488.483
4) Toxaphene-3	7.149	6.756	42578482	247.9E6	493.980	497.712
5) Toxaphene-4	7.563	7.198	54552672	171.5E6	492.551	493.627
6) Toxaphene-5	7.928	7.329	31161300	123.5E6	501.825	508.354
-----						

(f)=RT Delta > 1/2 Window (#)=Amounts differ by > 25% (m)=manual int.

Data Path : Z:\pestpcbsrv\HPCHEM1\ECD\_D\Data\PD061825\  
 Data File : PD089010.D  
 Signal(s) : Signal #1: ECD1A.ch Signal #2: ECD2B.ch  
 Acq On : 17 Jun 2025 19:44  
 Operator : AR\AJ  
 Sample : PTOXICV500  
 Misc :  
 ALS Vial : 22 Sample Multiplier: 1

Integration File signal 1: autoint1.e  
 Integration File signal 2: autoint2.e  
 Quant Time: Jun 18 04:37:01 2025  
 Quant Method : Z:\pestpcbsrv\HPCHEM1\ECD\_D\Method\DTX061825.M  
 Quant Title : GC Extractables  
 QLast Update : Wed Jun 18 04:35:42 2025  
 Response via : Initial Calibration  
 Integrator: ChemStation

Volume Inj. : 1 µl  
 Signal #1 Phase : ZB-MR1 Signal #2 Phase: ZB-MR2  
 Signal #1 Info : 30M x 0.32mm x 0. Signal #2 Info : 30M x 0.32mm x0.25µm



Instrument :  
 ECD\_D  
 ClientSample :  
 ICV\PD061825TOX