

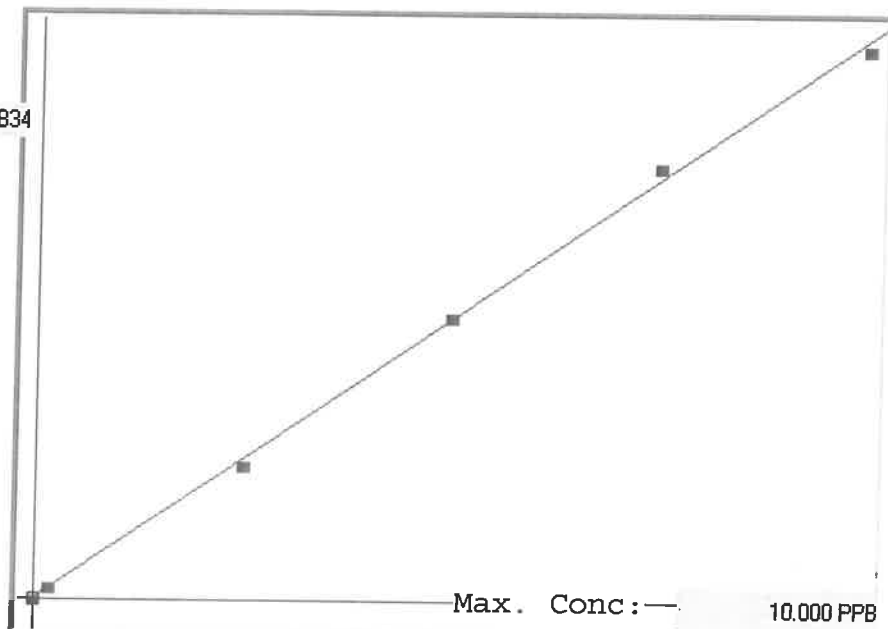
LB136499

7471B

INSTRUMENT ID: CV1

μ Abs.:

44834



Linear

A= 0.0000e+000

B= 2.1944e-004

C= -1.0437e-002

Rho= 0.9994215

Accept=Accepted

Std ID	Conc.	Calc.	Dev.	Mean	SD or %RSD	Rep 1	Rep 2	Rep 3	Rep 4	Rep 5	6/20
0.0	0.000	0.007	0.007	79	0.000	79					
0.2	0.200	0.208	0.008	996	0.0 %	996					
2.5	2.500	2.386	-0.114	10922	0.0 %	10922					
5.0	5.000	5.049	0.049	23055	0.0 %	23055					
7.5	7.500	7.722	0.222	35239	0.0 %	35239					
10.0	10.000	9.828	-0.172	44834	0.0 %	44834					

6/20
1
4
5
1
3
2

LB136499 INSTRUMENT ID : CV1

Method: 7471B

Operator: Admin

Date of Analysis: 16 Jul 2025 11:33:48

Type	Sample ID	Extended ID	Conc.	μ Abs	Units	Type	Std Conc	Method	Date
S	0.0 - 1	50	-	79	PPB	Std	0.0000	7471B	16 Jul 2025 11:42:20
S	0.2 - 1	50.2	-	996	PPB	Std	0.2000	7471B	16 Jul 2025 11:44:38
S	2.5 - 1	50.5	-	10922	PPB	Std	2.5000	7471B	16 Jul 2025 11:46:55
S	5.0 - 1	50.5	-	23055	PPB	Std	5.0000	7471B	16 Jul 2025 11:49:12
S	7.5 - 1	50.5	-	35239	PPB	Std	7.5000	7471B	16 Jul 2025 11:51:30
S	10.0 - 1	50.5	-	44834	PPB	Std	10.0000	7471B	16 Jul 2025 11:53:50
U	ICV29 - 1	ICV29	4.0739	18613	PPB	SMPL	-7471B		16 Jul 2025 11:56:51
U	ICB29 - 1	ICB29	-0.0690	-267	PPB	SMPL	-7471B		16 Jul 2025 11:59:08
U	CCV09 - 1	CCV09	5.3122	24256	PPB	SMPL	-7471B		16 Jul 2025 12:01:27
U	CCB09 - 1	CCB09	-0.0739	-289	PPB	SMPL	-7471B		16 Jul 2025 12:03:43
U	CRA - 1	CRA	0.2180	1041	PPB	SMPL	-7471B		16 Jul 2025 12:06:01
U	HighStd - 1	HighStd	10.0518	45855	PPB	SMPL	-7471B		16 Jul 2025 12:08:16
U	ChkStd - 1	ChkStd	7.3988	33765	PPB	SMPL	-7471B		16 Jul 2025 12:10:32
U	PB168891BL - 1	PBS	-0.0089	7	PPB	SMPL	-7471B		16 Jul 2025 12:12:59
U	PB168891BS - 1	LCSS	4.0630	18563	PPB	SMPL	-7471B		16 Jul 2025 12:19:46
U	Q2586-01 - 1	TP-16	0.4271	1994	PPB	SMPL	-7471B		16 Jul 2025 12:22:03
U	Q2589-01 - 1	AU-06-071125	0.5752	2669	PPB	SMPL	-7471B		16 Jul 2025 12:24:22
U	Q2590-01 - 1	NB-7-071125	0.4234	1977	PPB	SMPL	-7471B		16 Jul 2025 12:31:50
U	Q2590-01DUP - 1	NB-7-071125DUP	0.4032	1885	PPB	SMPL	-7471B		16 Jul 2025 12:34:07
U	Q2590-01MS - 1	NB-7-071125MS	2.8841	13191	PPB	SMPL	-7471B		16 Jul 2025 12:36:23
U	CCV10 - 1	CCV10	5.2690	24059	PPB	SMPL	-7471B		16 Jul 2025 12:38:39
U	CCB10 - 1	CCB10	-0.0065	18	PPB	SMPL	-7471B		16 Jul 2025 12:43:43
U	Q2590-01MSD - 1	NB-7-071125MSD	3.1606	14451	PPB	SMPL	-7471B		16 Jul 2025 12:45:58
U	Q2592-01 - 1	WC-SOIL-20250711	1.1947	5492	PPB	SMPL	-7471B		16 Jul 2025 12:48:15
U	Q2595-01 - 1	CHRT-24849	0.2426	1153	PPB	SMPL	-7471B		16 Jul 2025 12:50:34
U	Q2597-01 - 1	CHRT-26899	0.2698	1277	PPB	SMPL	-7471B		16 Jul 2025 12:52:53
U	Q2598-01 - 1	OK-01-071425	0.2489	1182	PPB	SMPL	-7471B		16 Jul 2025 12:55:10
U	Q2600-01 - 1	TRENCH	4.6015	21017	PPB	SMPL	-7471B		16 Jul 2025 12:57:28
U	Q2600-05 - 1	STOCK-PILE	1.0040	4623	PPB	SMPL	-7471B		16 Jul 2025 12:59:45
U	Q2600-09 - 1	END-OF-TRENCH	0.6321	2928	PPB	SMPL	-7471B		16 Jul 2025 13:02:14
U	PB168892BL - 1	PBS	-0.0616	-233	PPB	SMPL	-7471B		16 Jul 2025 13:04:34
U	PB168892BS - 1	LCSS	3.9805	18187	PPB	SMPL	-7471B		16 Jul 2025 13:09:47
U	CCV11 - 1	CCV11	5.2826	24121	PPB	SMPL	-7471B		16 Jul 2025 13:12:02
U	CCB11 - 1	CCB11	-0.0857	-343	PPB	SMPL	-7471B		16 Jul 2025 13:14:20
U	Q2487-09 - 1	G4(0-6)	4.4103	20146	PPB	SMPL	-7471B		16 Jul 2025 13:16:40
U	Q2487-10 - 1	G4(6-12)	2.9796	13626	PPB	SMPL	-7471B		16 Jul 2025 13:18:56
U	Q2487-11 - 1	G3(0-6)	3.4836	15923	PPB	SMPL	-7471B		16 Jul 2025 13:21:22
U	Q2487-12 - 1	G3(6-12)	1.1278	5187	PPB	SMPL	-7471B		16 Jul 2025 13:23:45
U	Q2487-13 - 1	G2(0-6)	5.0384	23008	PPB	SMPL	-7471B		16 Jul 2025 13:26:07
U	Q2487-14 - 1	G2(6-12)	2.8352	12968	PPB	SMPL	-7471B		16 Jul 2025 13:28:26
U	Q2487-15 - 1	G1(0-6)	3.3594	15357	PPB	SMPL	-7471B		16 Jul 2025 13:30:50
U	Q2487-16 - 1	G1(6-12)	3.5539	16243	PPB	SMPL	-7471B		16 Jul 2025 13:33:11
U	Q2487-16DUP - 1	G1(6-12)DUP	3.7773	17261	PPB	SMPL	-7471B		16 Jul 2025 13:35:32
U	Q2487-16MS - 1	G1(6-12)MS	7.5134	34287	PPB	SMPL	-7471B		16 Jul 2025 13:37:54
U	CCV12 - 1	CCV12	5.0875	23232	PPB	SMPL	-7471B		16 Jul 2025 13:40:17
U	CCB12 - 1	CCB12	-0.0793	-314	PPB	SMPL	-7471B		16 Jul 2025 13:42:40
U	Q2487-16MSD - 1	G1(6-12)MSD	7.2676	33167	PPB	SMPL	-7471B		16 Jul 2025 13:45:00
U	Q2514-01 - 1	TP-92	0.2889	1364	PPB	SMPL	-7471B		16 Jul 2025 13:47:15
U	Q2514-02 - 1	TP-93	0.3150	1483	PPB	SMPL	-7471B		16 Jul 2025 13:49:40
U	Q2514-03 - 1	TP-94	0.5134	2387	PPB	SMPL	-7471B		16 Jul 2025 13:51:57
U	Q2514-04 - 1	TP-96	0.6305	2921	PPB	SMPL	-7471B		16 Jul 2025 13:54:13
U	Q2514-05 - 1	TP-97	0.3931	1839	PPB	SMPL	-7471B		16 Jul 2025 13:56:32
U	Q2514-06 - 1	TP-103	1.0099	4650	PPB	SMPL	-7471B		16 Jul 2025 13:58:50
U	Q2514-07 - 1	TP-36	0.2544	1207	PPB	SMPL	-7471B		16 Jul 2025 14:01:09
U	Q2514-08 - 1	TP-78	0.4036	1887	PPB	SMPL	-7471B		16 Jul 2025 14:03:27
U	Q2514-09 - 1	TP-81	0.4462	2081	PPB	SMPL	-7471B		16 Jul 2025 14:05:43
U	CCV13 - 1	CCV13	5.1281	23417	PPB	SMPL	-7471B		16 Jul 2025 14:07:59
U	CCB13 - 1	CCB13	-0.0662	-254	PPB	SMPL	-7471B		16 Jul 2025 14:10:15
U	Q2514-10 - 1	TP-90	0.3009	1419	PPB	SMPL	-7471B		16 Jul 2025 14:12:35
U	Q2590-01LX5 - 1		0.0431	244	PPB	SMPL	-7471B		16 Jul 2025 14:14:51
U	Q2590-01A - 1		4.0867	18671	PPB	SMPL	-7471B		16 Jul 2025 14:17:08
U	Q2487-16LX5 - 1		0.8138	3756	PPB	SMPL	-7471B		16 Jul 2025 14:19:24
U	Q2487-16AA - 1		7.6102	34728	PPB	SMPL	-7471B		16 Jul 2025 14:21:43
U	CCV14 - 1	CCV14	5.0379	23006	PPB	SMPL	-7471B		16 Jul 2025 14:25:56
U	CCB14 - 1	CCB14	-0.0649	-248	PPB	SMPL	-7471B		16 Jul 2025 14:28:12