

Data Path : Z:\pestpcbsrv\HPCHEM1\ECD_S\Data\PS061825\
 Data File : PS030741.D
 Signal(s) : Signal #1: ECD1A.ch Signal #2: ECD2B.ch
 Acq On : 18 Jun 2025 12:13
 Operator : AR\AJ
 Sample : HSTDICC750
 Misc :
 ALS Vial : 5 Sample Multiplier: 1

Instrument :
 ECD_S
 ClientSampleId :
 HSTDICC750

Integration File signal 1: autoint1.e
 Integration File signal 2: autoint2.e
 Quant Time: Jun 20 05:11:47 2025
 Quant Method : Z:\pestpcbsrv\HPCHEM1\ECD_S\Method\PS061825.M
 Quant Title : 8080.M
 QLast Update : Thu Jun 19 05:11:26 2025
 Response via : Initial Calibration
 Integrator: ChemStation

Volume Inj. : 1 µl
 Signal #1 Phase : ZB-MR2 Signal #2 Phase: ZB-MR2
 Signal #1 Info : 30M x 0.32mm x0.5 Signal #2 Info : 30M x 0.32mm x 0.25µm

Compound	RT#1	RT#2	Resp#1	Resp#2	ng/ml	ng/ml

System Monitoring Compounds						
4) S 2,4-DCAA	7.349	7.770	3035.6E6	788.0E6	826.147	735.123
Target Compounds						
1) T Dalapon	2.711	2.709	4110.7E6	1860.0E6	689.069	678.398
2) T 3,5-DICHL...	6.508	6.715	3694.2E6	1104.7E6	686.962	684.833
3) T 4-Nitroph...	7.148	7.301	1058.7E6	1177.8E6	671.406	679.424
5) T DICAMBA	7.539	7.972	10887.5E6	4629.4E6	715.574	706.425
6) T MCPP	7.721	8.071	692.7E6	159.8E6	73.780	76.186
7) T MCPA	7.872	8.321	834.2E6	225.9E6	71.110	71.825
8) T DICHLORPROP	8.253	8.691	2465.2E6	1056.4E6	658.135	671.805
9) T 2,4-D	8.486	9.027	2330.4E6	1143.9E6	676.582	673.127
10) T Pentachlo...	8.793	9.552	38633.6E6	27600.8E6	729.962	724.010
11) T 2,4,5-TP ...	9.375	9.933	14234.3E6	10200.5E6	710.633	706.961
12) T 2,4,5-T	9.668	10.359	11991.4E6	9758.3E6	728.821	714.130
13) T 2,4-DB	10.247	10.927	1715.3E6	829.1E6	747.888	700.871
14) T DINOSEB	11.466	11.311	9809.4E6	7563.6E6	707.076	701.555
15) T Picloram	11.275	12.421	11657.4E6	16873.3E6	725.137	726.003
16) T DCPA	11.762	12.356	18560.8E6	15913.5E6	724.571	721.937

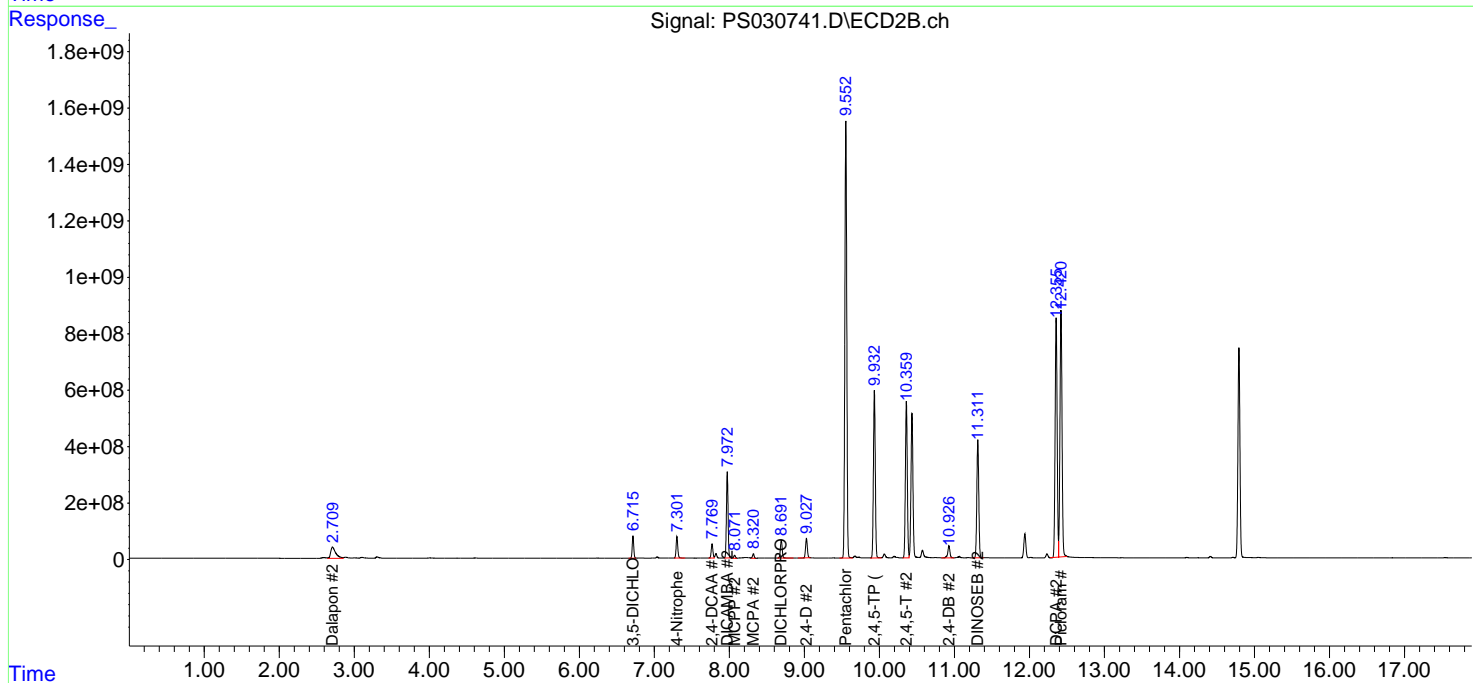
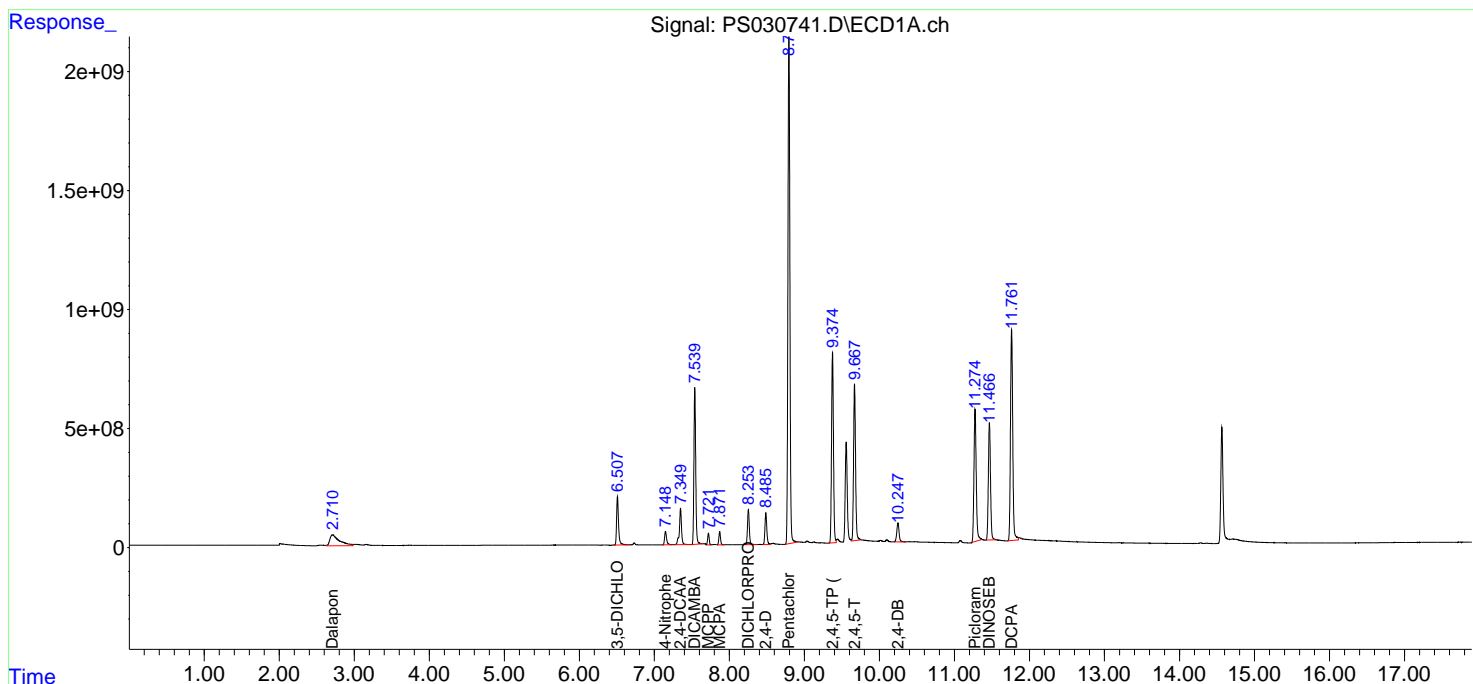
(f)=RT Delta > 1/2 Window (#)=Amounts differ by > 25% (m)=manual int.

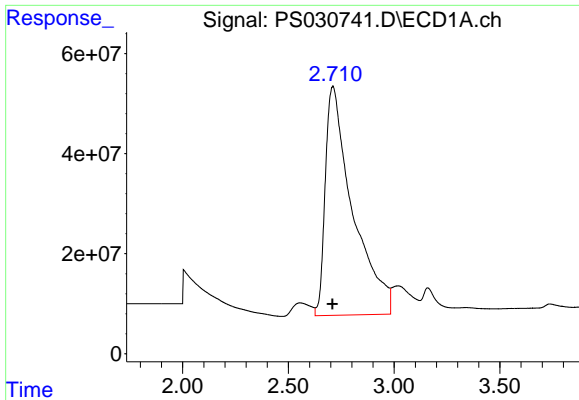
Data Path : Z:\pestpcbsrv\HPCHEM1\ECD_S\Data\PS061825\
 Data File : PS030741.D
 Signal(s) : Signal #1: ECD1A.ch Signal #2: ECD2B.ch
 Acq On : 18 Jun 2025 12:13
 Operator : AR\AJ
 Sample : HSTDICC750
 Misc :
 ALS Vial : 5 Sample Multiplier: 1

Instrument :
 ECD_S
 ClientSampleId :
 HSTDICC750

Integration File signal 1: autoint1.e
 Integration File signal 2: autoint2.e
 Quant Time: Jun 20 05:11:47 2025
 Quant Method : Z:\pestpcbsrv\HPCHEM1\ECD_S\Method\PS061825.M
 Quant Title : 8080.M
 QLast Update : Thu Jun 19 05:11:26 2025
 Response via : Initial Calibration
 Integrator: ChemStation

Volume Inj. : 1 µl
 Signal #1 Phase : ZB-MR1 Signal #2 Phase: ZB-MR2
 Signal #1 Info : 30M x 0.32mm x0.5 Signal #2 Info : 30M x 0.32mm x 0.25µm

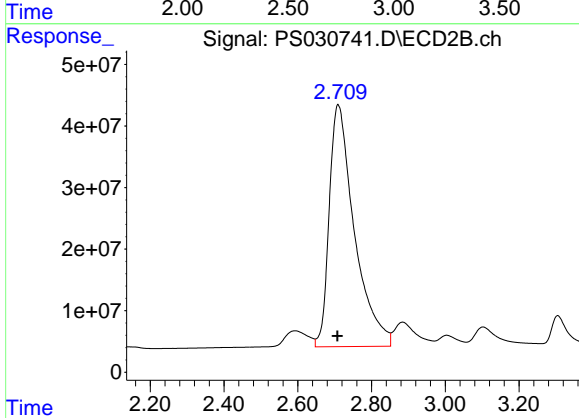




#1 Dalapon

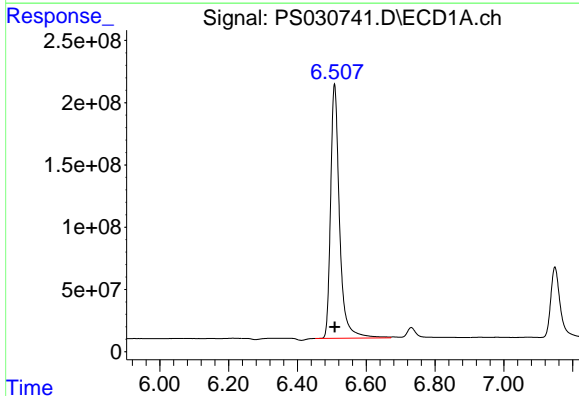
R.T.: 2.711 min
 Delta R.T.: 0.003 min
 Response: 4110732348
 Conc: 689.07 ng/ml

Instrument :
 ECD_S
 ClientSampleId :
 HSTDICC750



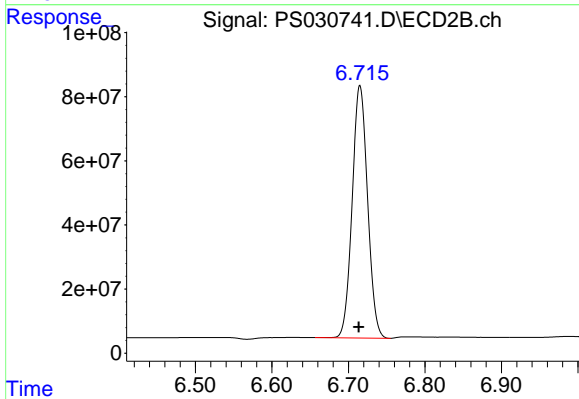
#1 Dalapon

R.T.: 2.709 min
 Delta R.T.: 0.002 min
 Response: 1859991643
 Conc: 678.40 ng/ml



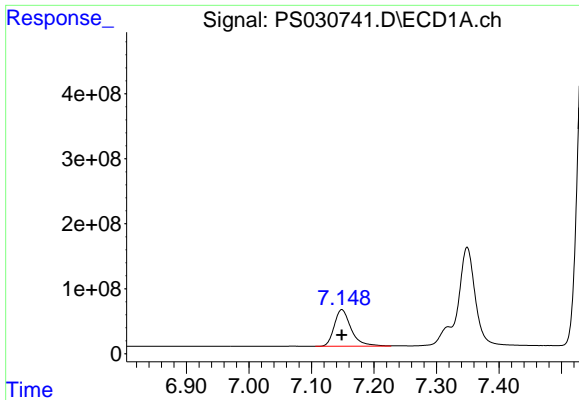
#2 3,5-DICHLOROBENZOIC ACID

R.T.: 6.508 min
 Delta R.T.: 0.000 min
 Response: 3694171115
 Conc: 686.96 ng/ml



#2 3,5-DICHLOROBENZOIC ACID

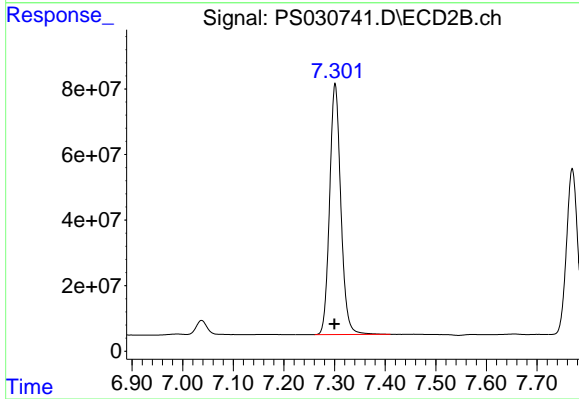
R.T.: 6.715 min
 Delta R.T.: 0.002 min
 Response: 1104738592
 Conc: 684.83 ng/ml



#3 4-Nitrophenol

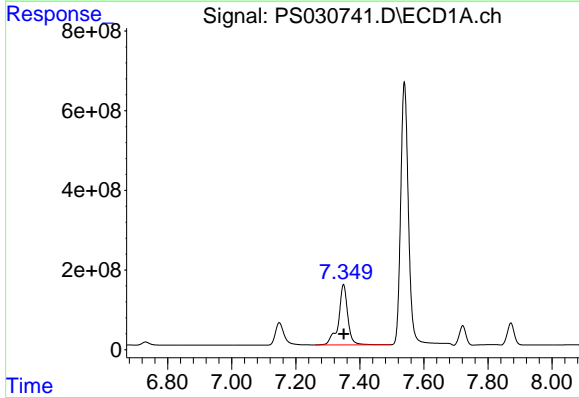
R.T.: 7.148 min
Delta R.T.: 0.000 min
Response: 1058651889
Conc: 671.41 ng/ml

Instrument :
ECD_S
ClientSampleId :
HSTDICC750



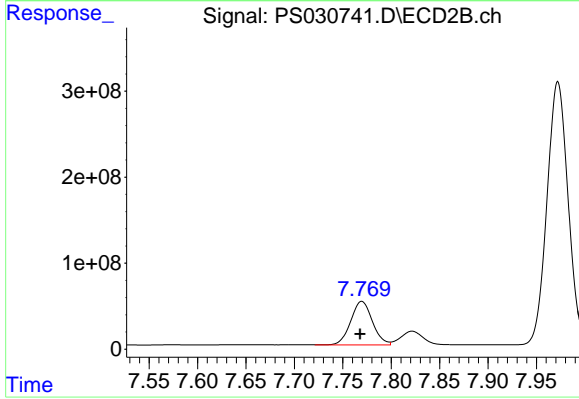
#3 4-Nitrophenol

R.T.: 7.301 min
Delta R.T.: 0.002 min
Response: 1177806312
Conc: 679.42 ng/ml



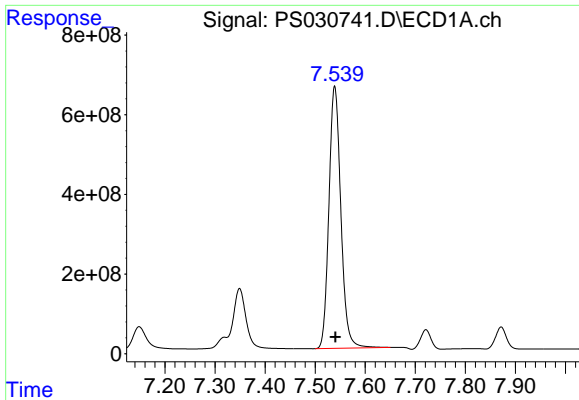
#4 2,4-DCAA

R.T.: 7.349 min
Delta R.T.: 0.000 min
Response: 3035589375
Conc: 826.15 ng/ml



#4 2,4-DCAA

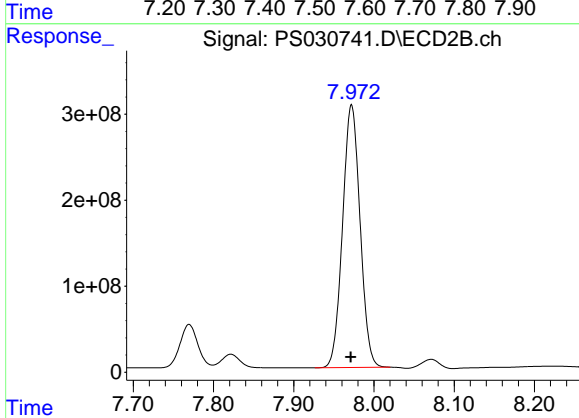
R.T.: 7.770 min
Delta R.T.: 0.002 min
Response: 788025014
Conc: 735.12 ng/ml



#5 DICAMBA

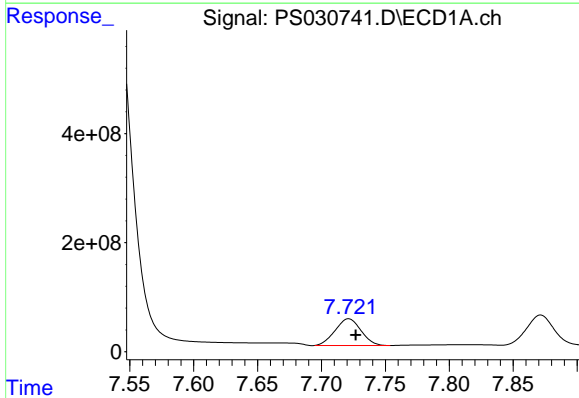
R.T.: 7.539 min
 Delta R.T.: -0.001 min
 Response: 10887528591
 Conc: 715.57 ng/ml

Instrument :
 ECD_S
 ClientSampleId :
 HSTDICC750



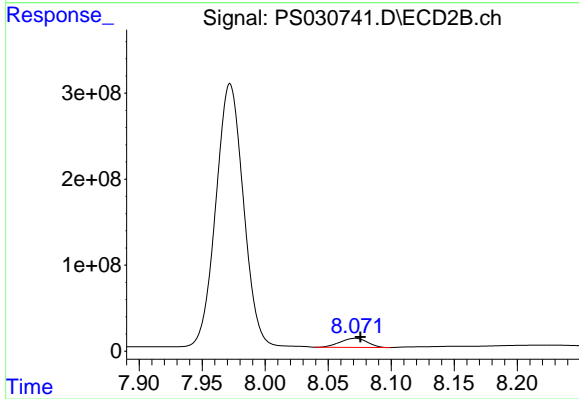
#5 DICAMBA

R.T.: 7.972 min
 Delta R.T.: 0.000 min
 Response: 4629352370
 Conc: 706.42 ng/ml



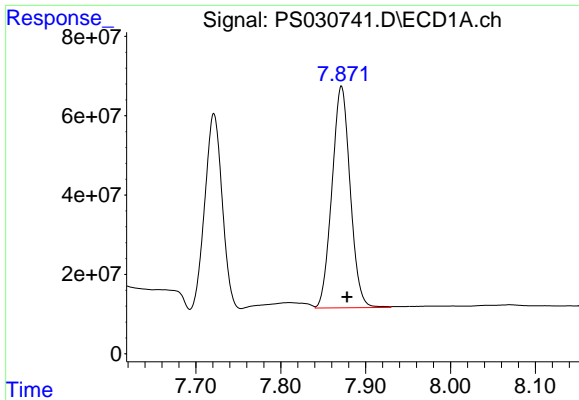
#6 MCPP

R.T.: 7.721 min
 Delta R.T.: -0.006 min
 Response: 692670314
 Conc: 73.78 ug/ml



#6 MCPP

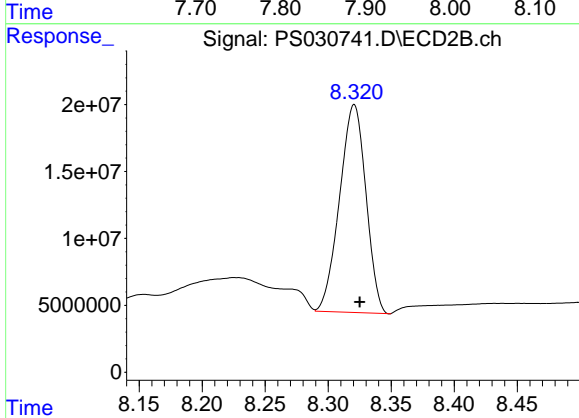
R.T.: 8.071 min
 Delta R.T.: -0.004 min
 Response: 159785274
 Conc: 76.19 ug/ml



#7 MCPA

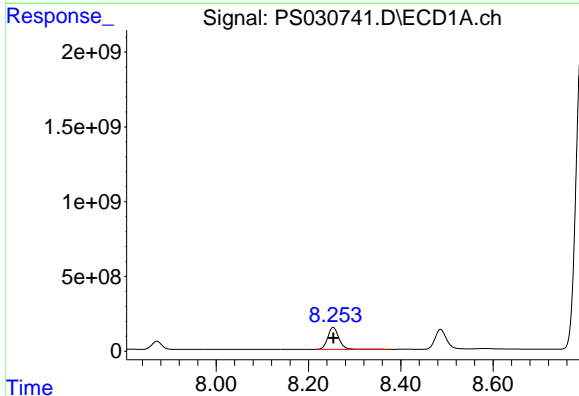
R.T.: 7.872 min
 Delta R.T.: -0.006 min
 Response: 834163992
 Conc: 71.11 ug/ml

Instrument :
 ECD_S
 ClientSampleId :
 HSTDICC750



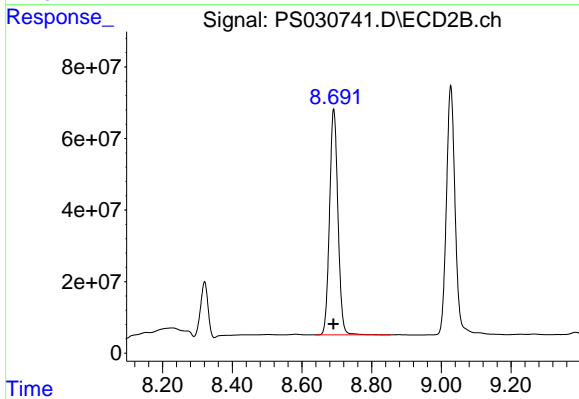
#7 MCPA

R.T.: 8.321 min
 Delta R.T.: -0.004 min
 Response: 225941875
 Conc: 71.82 ug/ml



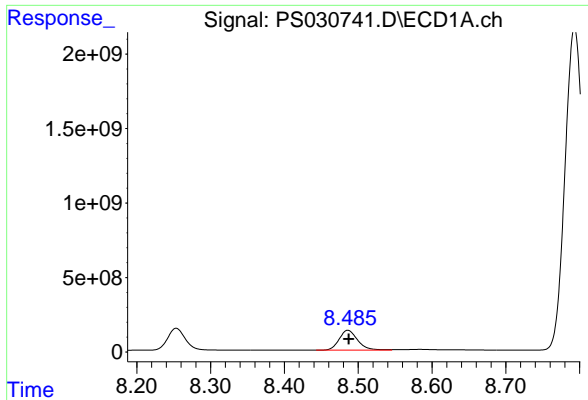
#8 DICHLORPROP

R.T.: 8.253 min
 Delta R.T.: 0.000 min
 Response: 2465218415
 Conc: 658.13 ng/ml



#8 DICHLORPROP

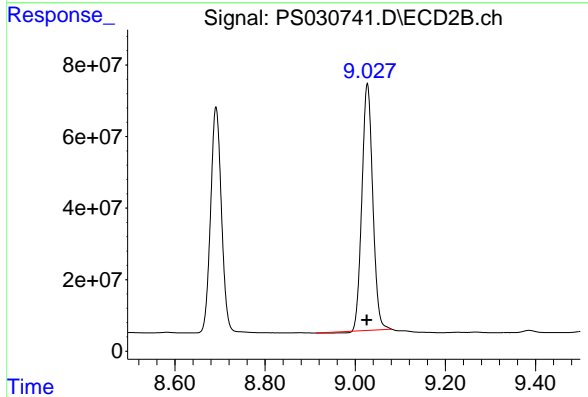
R.T.: 8.691 min
 Delta R.T.: 0.001 min
 Response: 1056410180
 Conc: 671.80 ng/ml



#9 2,4-D

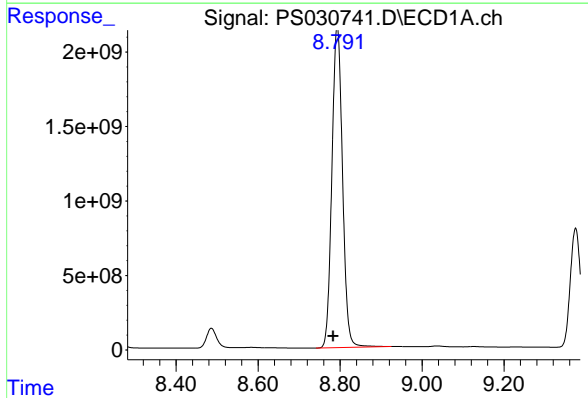
R.T.: 8.486 min
Delta R.T.: -0.001 min
Response: 2330427769
Conc: 676.58 ng/ml

Instrument :
ECD_S
ClientSampleId :
HSTDICC750



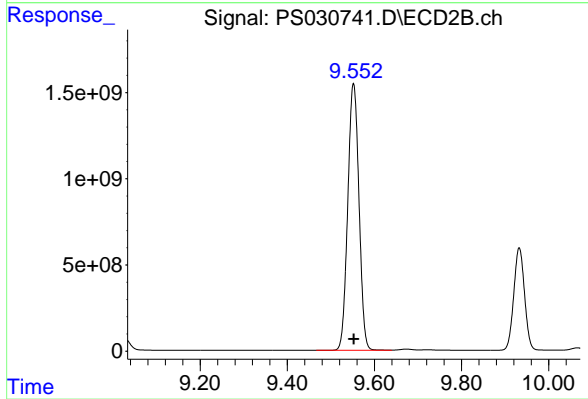
#9 2,4-D

R.T.: 9.027 min
Delta R.T.: 0.001 min
Response: 1143914938
Conc: 673.13 ng/ml



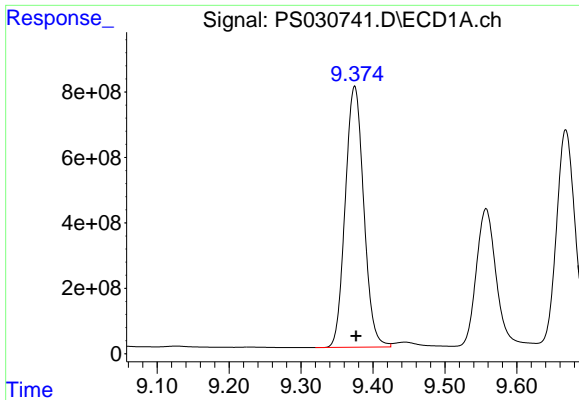
#10 Pentachlorophenol

R.T.: 8.793 min
Delta R.T.: 0.010 min
Response: 38633572840
Conc: 729.96 ng/ml



#10 Pentachlorophenol

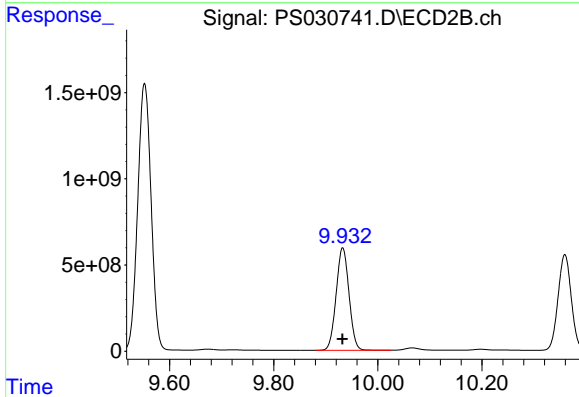
R.T.: 9.552 min
Delta R.T.: 0.000 min
Response: 27600761982
Conc: 724.01 ng/ml



#11 2,4,5-TP (SILVEX)

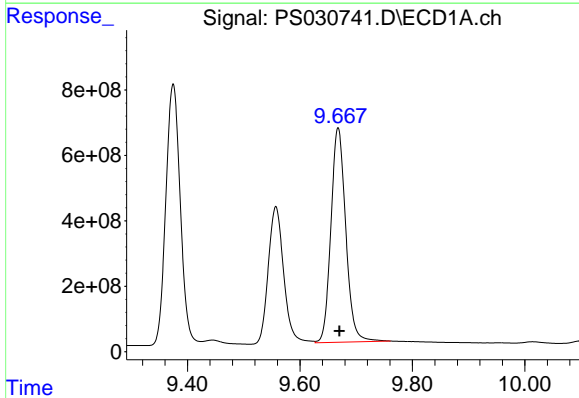
R.T.: 9.375 min
 Delta R.T.: -0.002 min
 Response: 14234264641
 Conc: 710.63 ng/ml

Instrument :
 ECD_S
 ClientSampleId :
 HSTDICC750



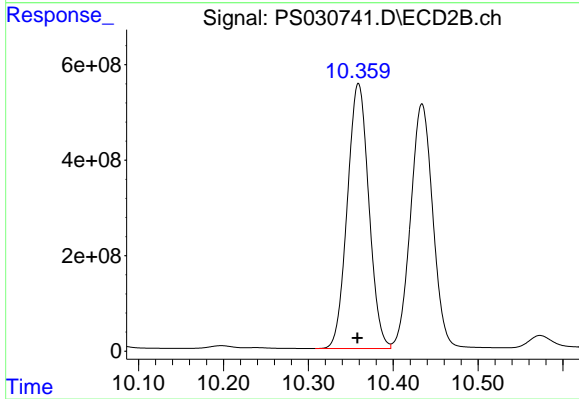
#11 2,4,5-TP (SILVEX)

R.T.: 9.933 min
 Delta R.T.: 0.000 min
 Response: 10200535553
 Conc: 706.96 ng/ml



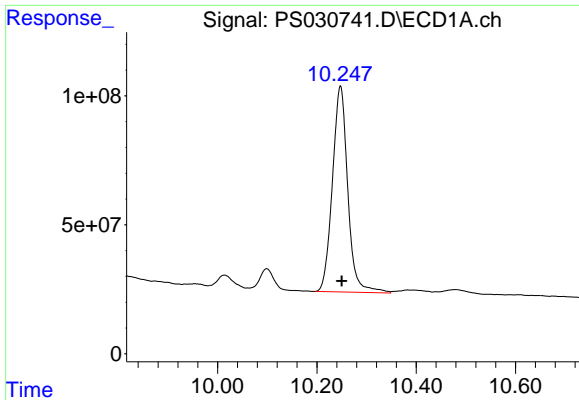
#12 2,4,5-T

R.T.: 9.668 min
 Delta R.T.: -0.002 min
 Response: 11991398310
 Conc: 728.82 ng/ml



#12 2,4,5-T

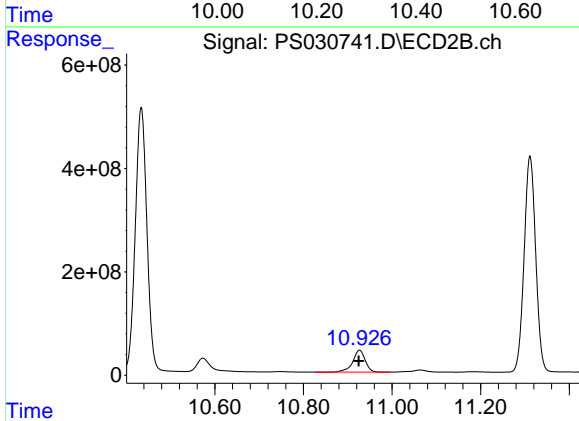
R.T.: 10.359 min
 Delta R.T.: 0.001 min
 Response: 9758313181
 Conc: 714.13 ng/ml



#13 2,4-DB

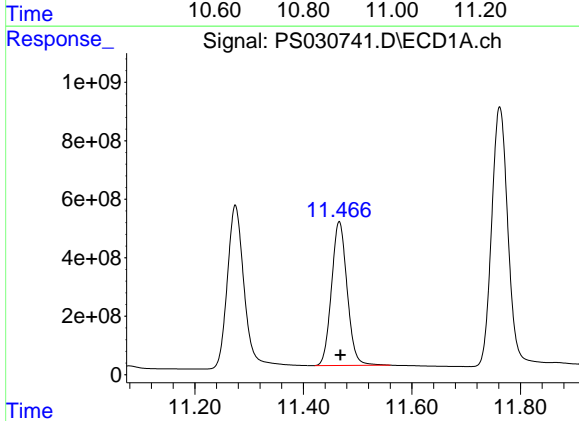
R.T.: 10.247 min
Delta R.T.: -0.002 min
Response: 1715281945
Conc: 747.89 ng/ml

Instrument :
ECD_S
ClientSampleId :
HSTDICC750



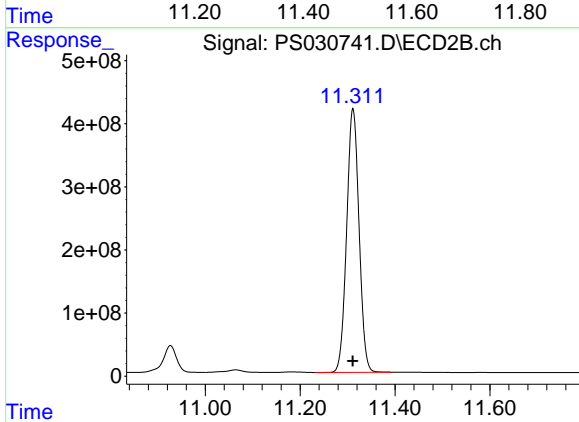
#13 2,4-DB

R.T.: 10.927 min
Delta R.T.: 0.001 min
Response: 829063294
Conc: 700.87 ng/ml



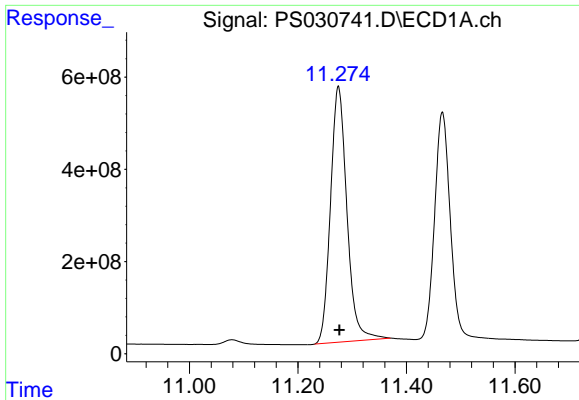
#14 DINOSEB

R.T.: 11.466 min
Delta R.T.: -0.002 min
Response: 9809399692
Conc: 707.08 ng/ml



#14 DINOSEB

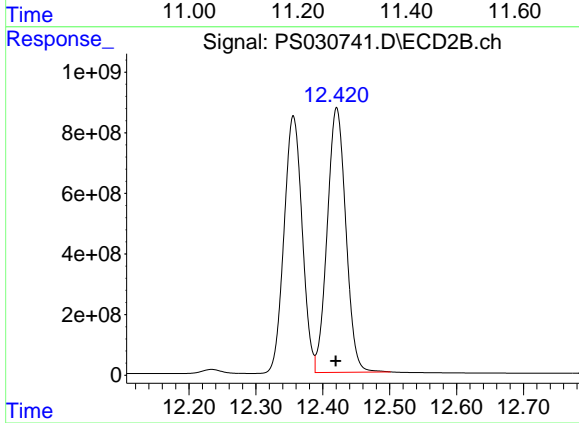
R.T.: 11.311 min
Delta R.T.: 0.000 min
Response: 7563637752
Conc: 701.55 ng/ml



#15 Picloram

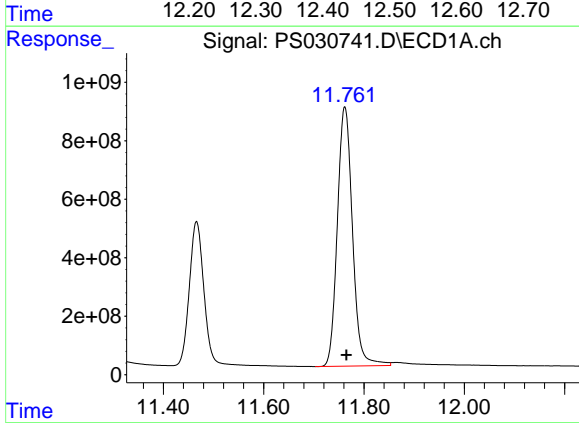
R.T.: 11.275 min
 Delta R.T.: -0.002 min
 Response: 11657389801
 Conc: 725.14 ng/ml

Instrument :
 ECD_S
 ClientSampleId :
 HSTDICC750



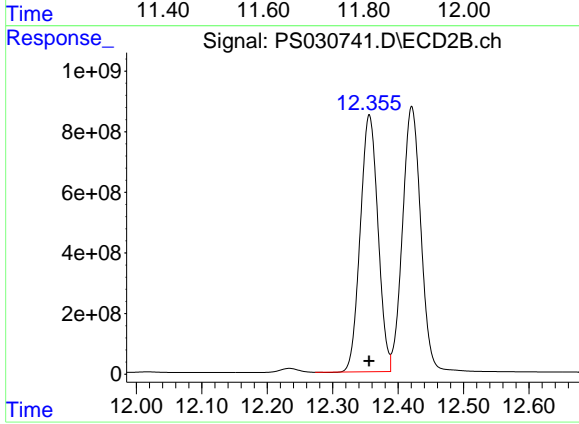
#15 Picloram

R.T.: 12.421 min
 Delta R.T.: 0.001 min
 Response: 16873349692
 Conc: 726.00 ng/ml



#16 DCPA

R.T.: 11.762 min
 Delta R.T.: -0.003 min
 Response: 18560788988
 Conc: 724.57 ng/ml



#16 DCPA

R.T.: 12.356 min
 Delta R.T.: 0.000 min
 Response: 15913495369
 Conc: 721.94 ng/ml