

Data Path : Z:\pestpcbsrv\HPCHEM1\ECD_S\Data\PS061825\
 Data File : PS030743.D
 Signal(s) : Signal #1: ECD1A.ch Signal #2: ECD2B.ch
 Acq On : 18 Jun 2025 13:29
 Operator : AR\AJ
 Sample : HSTDICC1500
 Misc :
 ALS Vial : 7 Sample Multiplier: 1

Instrument :
 ECD_S
 ClientSampleId :
 HSTDICC1500

Integration File signal 1: autoint1.e
 Integration File signal 2: autoint2.e
 Quant Time: Jun 18 13:51:20 2025
 Quant Method : Z:\pestpcbsrv\HPCHEM1\ECD_S\Method\PS061825.M
 Quant Title : 8080.M
 QLast Update : Wed Jun 18 13:50:13 2025
 Response via : Initial Calibration
 Integrator: ChemStation

Volume Inj. : 1 µl
 Signal #1 Phase : ZB-MR2 Signal #2 Phase: ZB-MR2
 Signal #1 Info : 30M x 0.32mm x0.5 Signal #2 Info : 30M x 0.32mm x 0.25µm

Compound	RT#1	RT#2	Resp#1	Resp#2	ng/ml	ng/ml

System Monitoring Compounds						
4) S 2,4-DCAA	7.350	7.768	5067.1E6	1423.1E6	1373.108	1327.583
Target Compounds						
1) T Dalapon	2.708	2.707	7057.1E6	3212.8E6	1238.824	1171.806
2) T 3,5-DICHL...	6.509	6.713	6482.8E6	2001.5E6	1205.529	1240.719
3) T 4-Nitroph...	7.149	7.299	1960.3E6	2216.2E6	1243.237	1278.444
5) T DICAMBA	7.540	7.971	17370.1E6	8409.2E6	1141.638	1283.215
6) T MCPP	7.727	8.076	1357.6E6	277.5E6	144.610	132.298
7) T MCPA	7.878	8.325	1663.5E6	431.1E6	141.809	137.032
8) T DICHLORPROP	8.254	8.690	5064.4E6	2161.7E6	1352.041	1374.694
9) T 2,4-D	8.487	9.026	4934.4E6	2416.0E6	1432.593	1421.668
10) T Pentachlo...	8.805	9.553	58525.2E6	45248.4E6	1113.994	1186.933
11) T 2,4,5-TP ...	9.377	9.932	26551.1E6	18758.2E6	1325.538	1300.061
12) T 2,4,5-T	9.670	10.358	21818.2E6	17137.2E6	1326.082	1254.129
13) T 2,4-DB	10.250	10.925	2621.2E6	1524.0E6	1142.883	1288.354
14) T DINOSEB	11.468	11.311	18321.9E6	14096.3E6	1320.671	1307.487
15) T Picloram	11.276	12.419	23276.8E6	31814.5E6	1447.914	1368.873
16) T DCPA	11.765	12.356	32738.8E6	27988.3E6	1278.048	1269.724

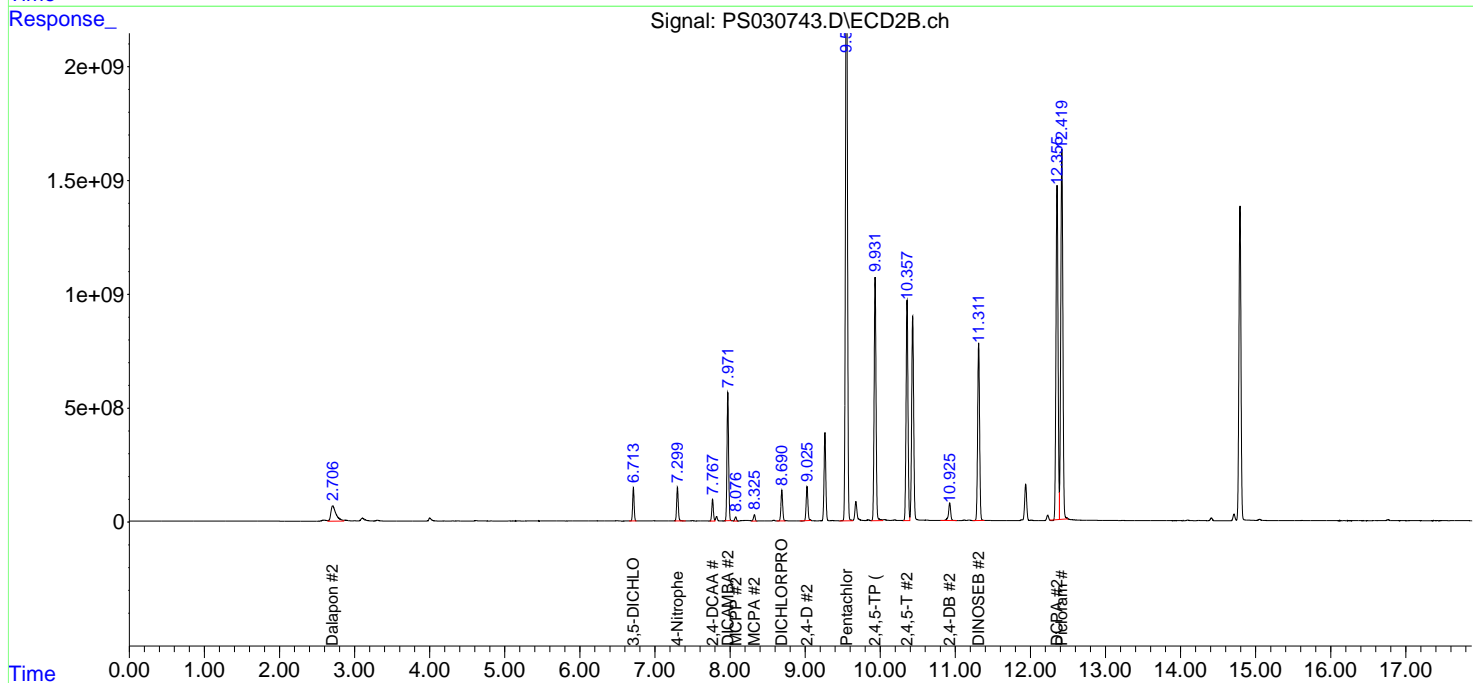
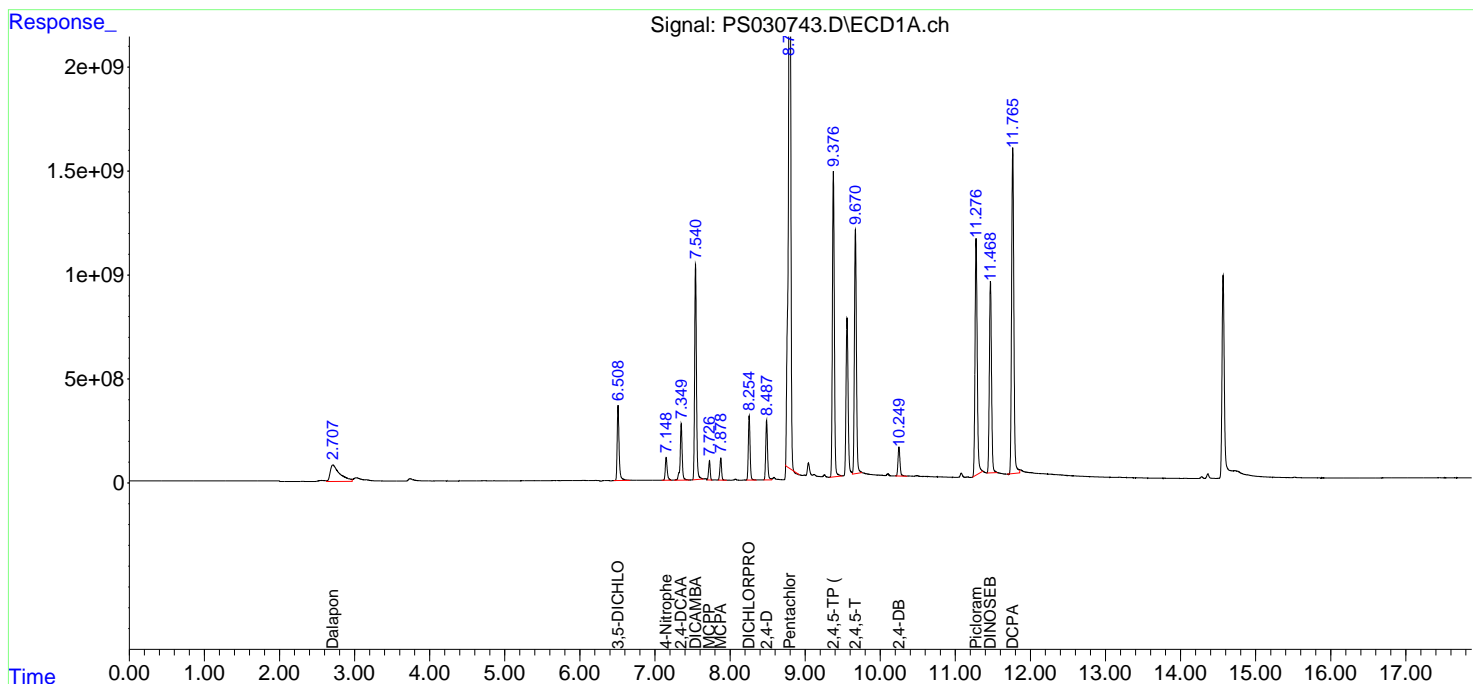
(f)=RT Delta > 1/2 Window (#)=Amounts differ by > 25% (m)=manual int.

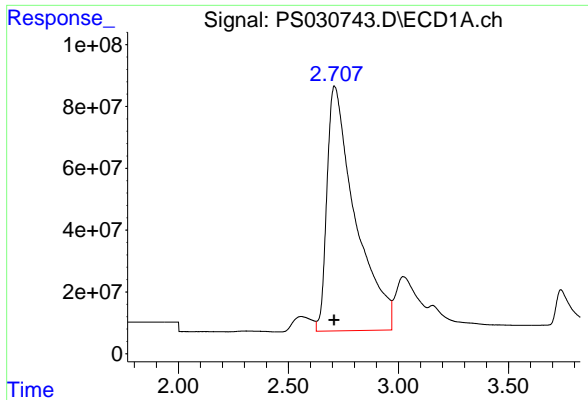
Data Path : Z:\pestpcbsrv\HPCHEM1\ECD_S\Data\PS061825\
 Data File : PS030743.D
 Signal(s) : Signal #1: ECD1A.ch Signal #2: ECD2B.ch
 Acq On : 18 Jun 2025 13:29
 Operator : AR\AJ
 Sample : HSTDICC1500
 Misc :
 ALS Vial : 7 Sample Multiplier: 1

Instrument :
 ECD_S
 ClientSampleId :
 HSTDICC1500

Integration File signal 1: autoint1.e
 Integration File signal 2: autoint2.e
 Quant Time: Jun 18 13:51:20 2025
 Quant Method : Z:\pestpcbsrv\HPCHEM1\ECD_S\Method\PS061825.M
 Quant Title : 8080.M
 QLast Update : Wed Jun 18 13:50:13 2025
 Response via : Initial Calibration
 Integrator: ChemStation

Volume Inj. : 1 µl
 Signal #1 Phase : ZB-MR1 Signal #2 Phase: ZB-MR2
 Signal #1 Info : 30M x 0.32mm x0.5 Signal #2 Info : 30M x 0.32mm x 0.25µm

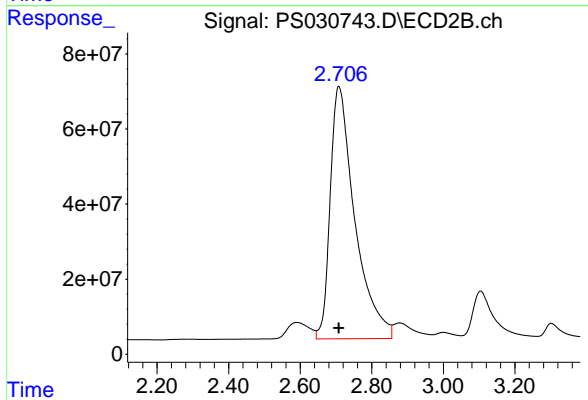




#1 Dalapon

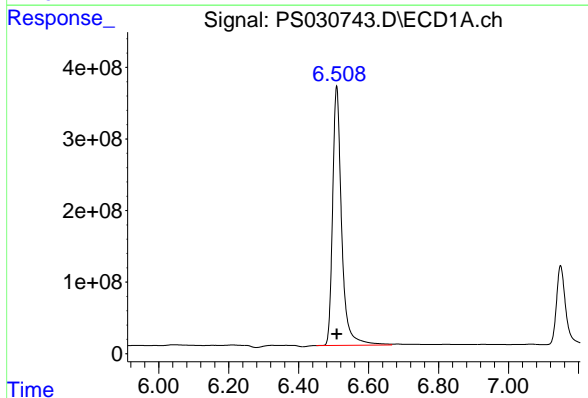
R.T.: 2.708 min
 Delta R.T.: 0.000 min
 Response: 7057136388
 Conc: 1238.82 ng/ml

Instrument :
 ECD_S
 ClientSampleId :
 HSTDICC1500



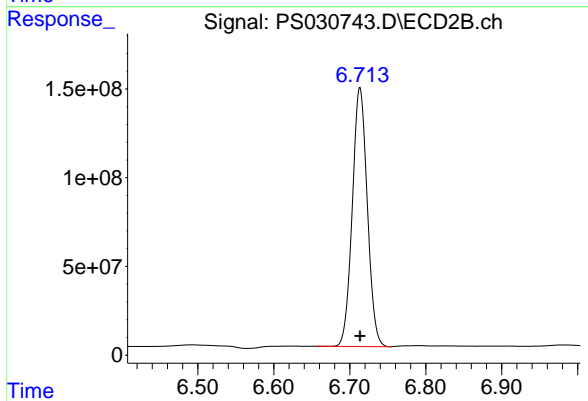
#1 Dalapon

R.T.: 2.707 min
 Delta R.T.: 0.000 min
 Response: 3212790048
 Conc: 1171.81 ng/ml



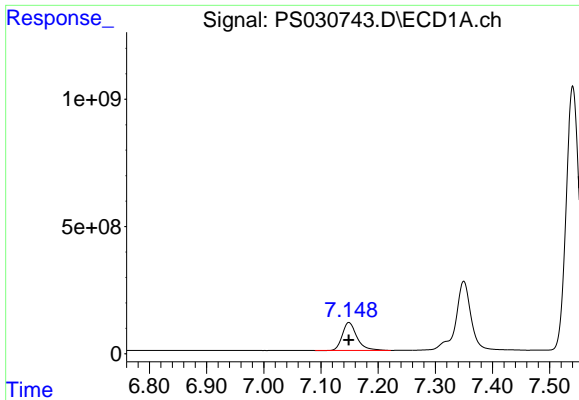
#2 3,5-DICHLOROBENZOIC ACID

R.T.: 6.509 min
 Delta R.T.: 0.000 min
 Response: 6482795096
 Conc: 1205.53 ng/ml



#2 3,5-DICHLOROBENZOIC ACID

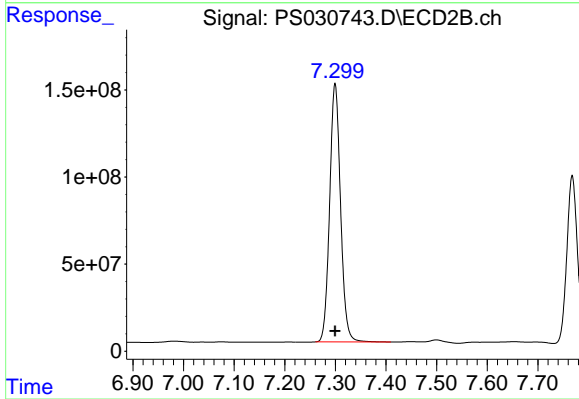
R.T.: 6.713 min
 Delta R.T.: 0.000 min
 Response: 2001466518
 Conc: 1240.72 ng/ml



#3 4-Nitrophenol

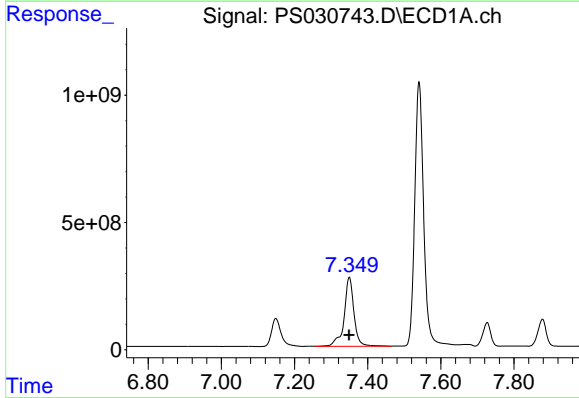
R.T.: 7.149 min
 Delta R.T.: 0.000 min
 Response: 1960296082
 Conc: 1243.24 ng/ml

Instrument :
 ECD_S
 ClientSampleId :
 HSTDICC1500



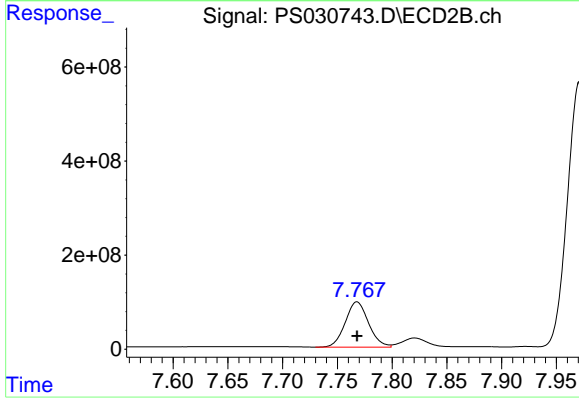
#3 4-Nitrophenol

R.T.: 7.299 min
 Delta R.T.: 0.000 min
 Response: 2216227681
 Conc: 1278.44 ng/ml



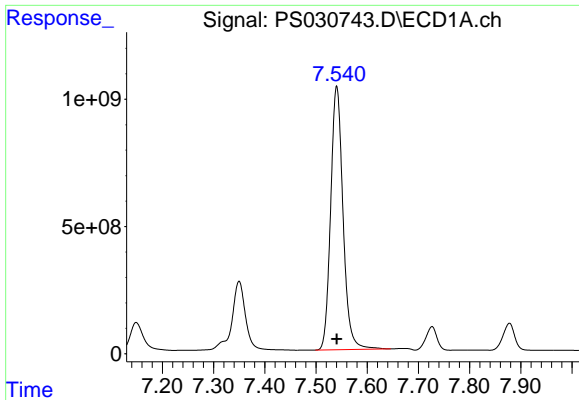
#4 2,4-DCAA

R.T.: 7.350 min
 Delta R.T.: 0.000 min
 Response: 5067131351
 Conc: 1373.11 ng/ml



#4 2,4-DCAA

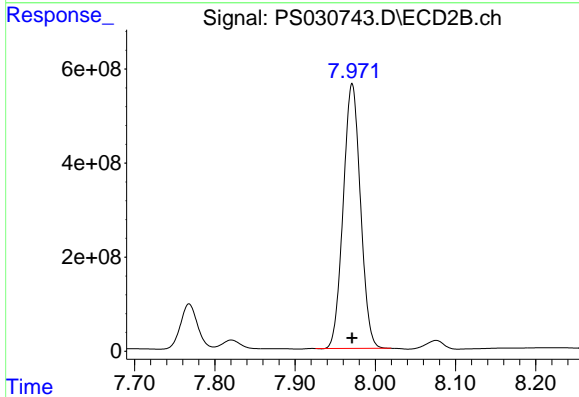
R.T.: 7.768 min
 Delta R.T.: 0.000 min
 Response: 1423121071
 Conc: 1327.58 ng/ml



#5 DICAMBA

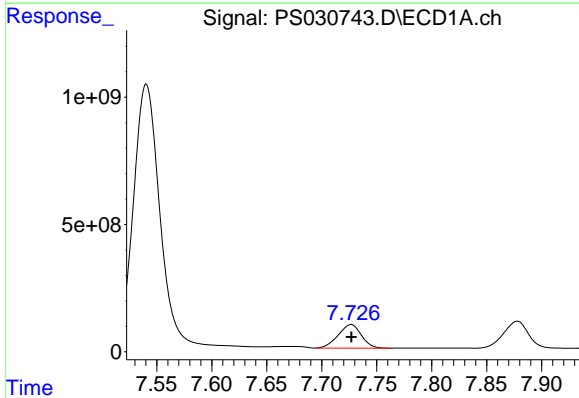
R.T.: 7.540 min
 Delta R.T.: 0.000 min
 Response: 17370132502
 Conc: 1141.64 ng/m

Instrument :
 ECD_S
 ClientSampleId :
 HSTDICC1500



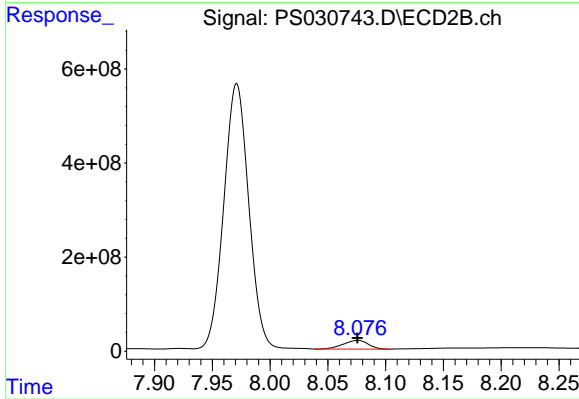
#5 DICAMBA

R.T.: 7.971 min
 Delta R.T.: 0.000 min
 Response: 8409181413
 Conc: 1283.21 ng/ml



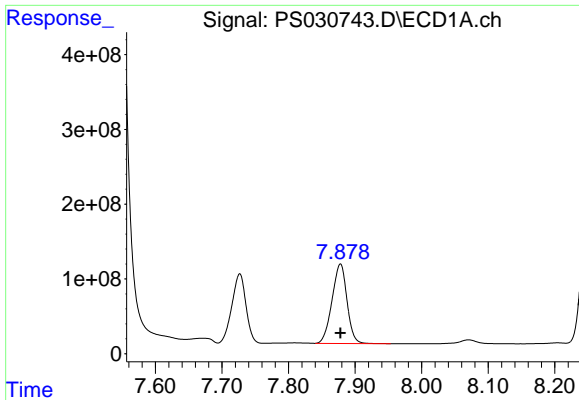
#6 MCP

R.T.: 7.727 min
 Delta R.T.: 0.000 min
 Response: 1357647586
 Conc: 144.61 ug/ml



#6 MCP

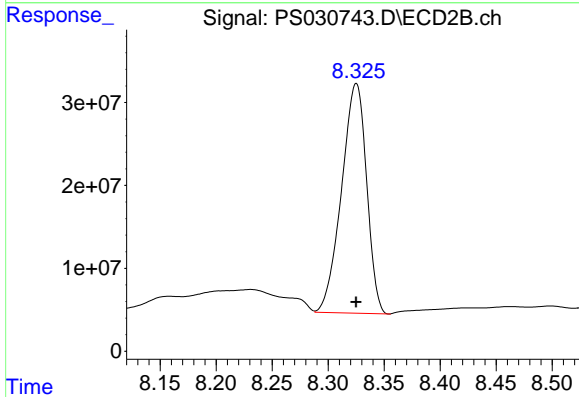
R.T.: 8.076 min
 Delta R.T.: 0.000 min
 Response: 277470300
 Conc: 132.30 ug/ml



#7 MCPA

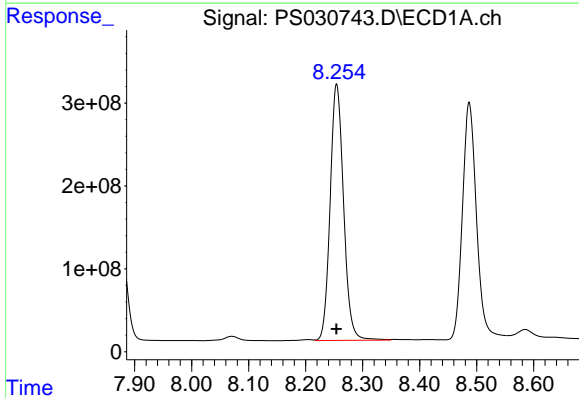
R.T.: 7.878 min
 Delta R.T.: 0.000 min
 Response: 1663503511
 Conc: 141.81 ug/ml

Instrument :
 ECD_S
 ClientSampleId :
 HSTDICC1500



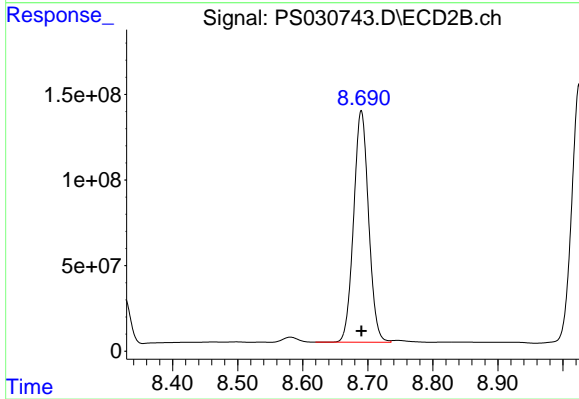
#7 MCPA

R.T.: 8.325 min
 Delta R.T.: 0.000 min
 Response: 431066075
 Conc: 137.03 ug/ml



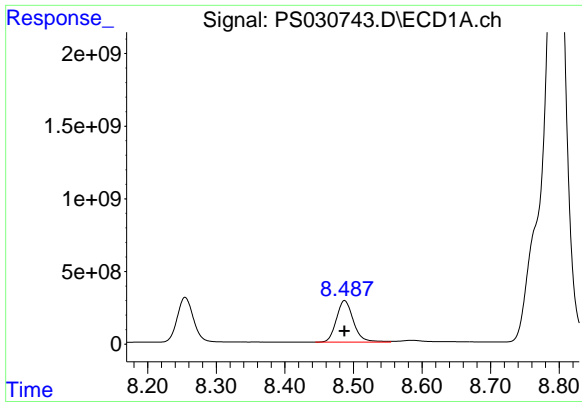
#8 DICHLORPROP

R.T.: 8.254 min
 Delta R.T.: 0.000 min
 Response: 5064429025
 Conc: 1352.04 ng/ml



#8 DICHLORPROP

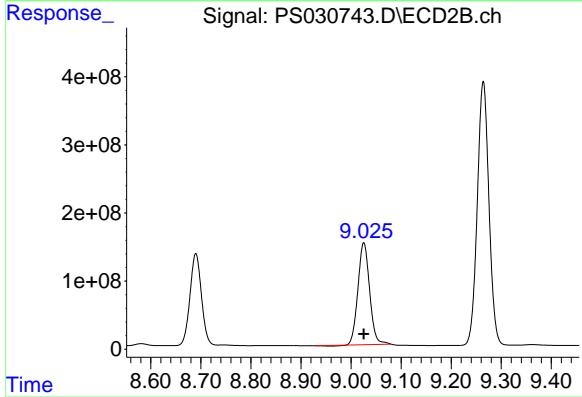
R.T.: 8.690 min
 Delta R.T.: 0.000 min
 Response: 2161699815
 Conc: 1374.69 ng/ml



#9 2,4-D

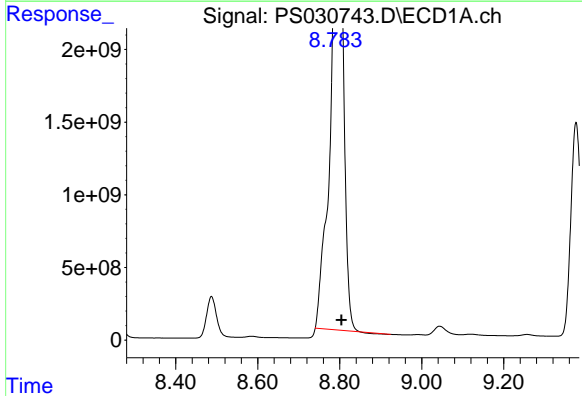
R.T.: 8.487 min
 Delta R.T.: 0.000 min
 Response: 4934439813
 Conc: 1432.59 ng/ml

Instrument :
 ECD_S
 ClientSampleId :
 HSTDICC1500



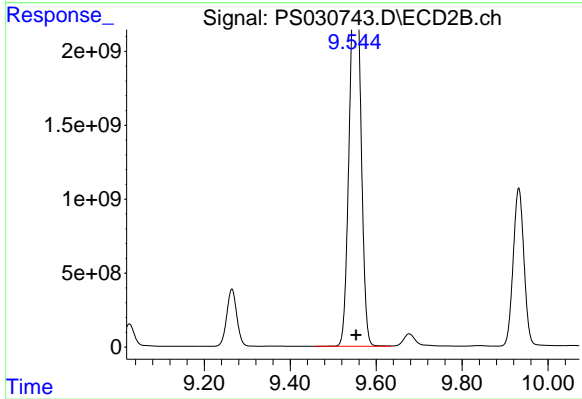
#9 2,4-D

R.T.: 9.026 min
 Delta R.T.: 0.000 min
 Response: 2415990251
 Conc: 1421.67 ng/ml



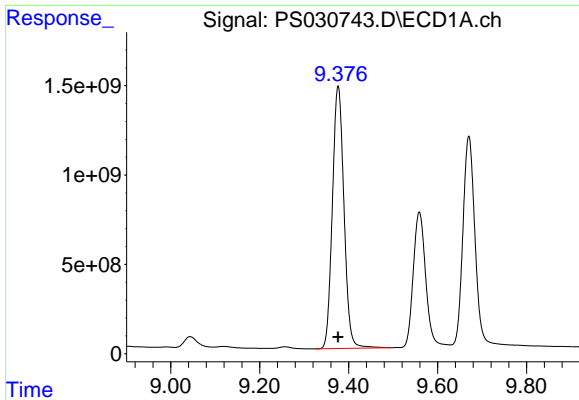
#10 Pentachlorophenol

R.T.: 8.805 min
 Delta R.T.: 0.000 min
 Response: 58525180902
 Conc: 1113.99 ng/ml



#10 Pentachlorophenol

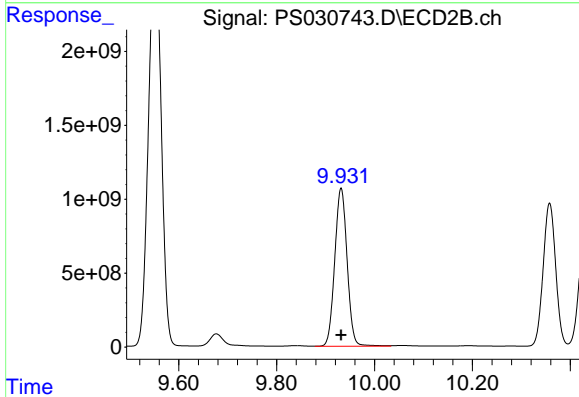
R.T.: 9.553 min
 Delta R.T.: 0.000 min
 Response: 45248357804
 Conc: 1186.93 ng/ml



#11 2,4,5-TP (SILVEX)

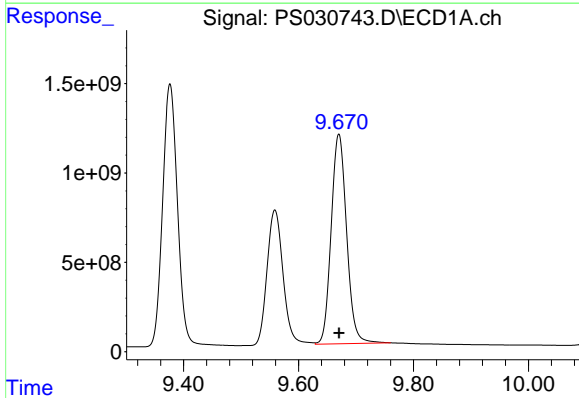
R.T.: 9.377 min
 Delta R.T.: 0.000 min
 Response: 26551071592
 Conc: 1325.54 ng/ml

Instrument :
 ECD_S
 ClientSampleId :
 HSTDICC1500



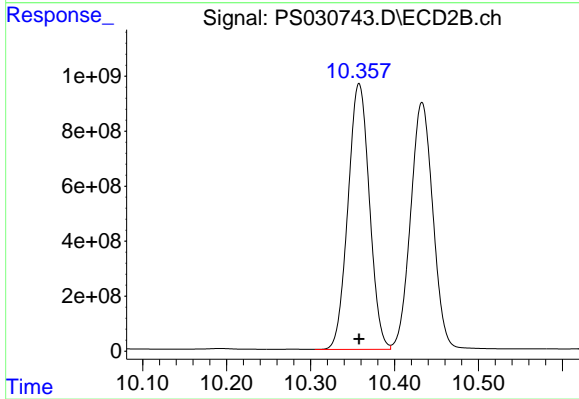
#11 2,4,5-TP (SILVEX)

R.T.: 9.932 min
 Delta R.T.: 0.000 min
 Response: 18758195654
 Conc: 1300.06 ng/ml



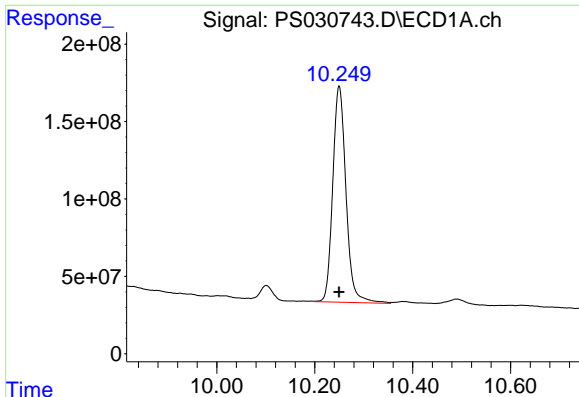
#12 2,4,5-T

R.T.: 9.670 min
 Delta R.T.: 0.000 min
 Response: 21818222628
 Conc: 1326.08 ng/ml



#12 2,4,5-T

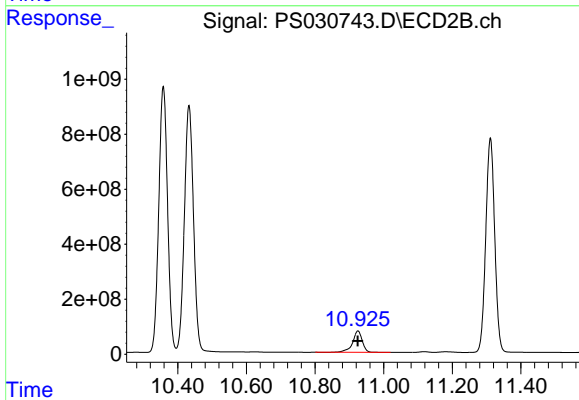
R.T.: 10.358 min
 Delta R.T.: 0.000 min
 Response: 17137207861
 Conc: 1254.13 ng/ml



#13 2,4-DB

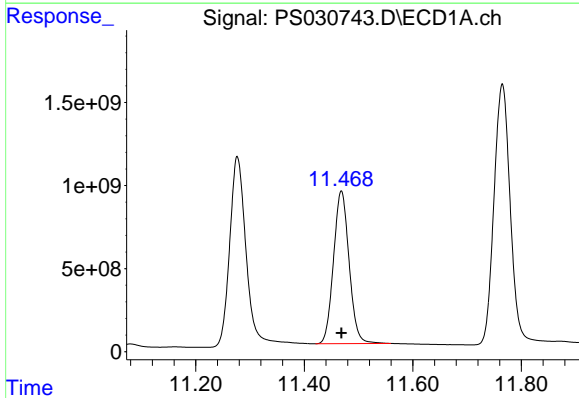
R.T.: 10.250 min
Delta R.T.: 0.000 min
Response: 2621204458
Conc: 1142.88 ng/ml

Instrument :
ECD_S
ClientSampleId :
HSTDICC1500



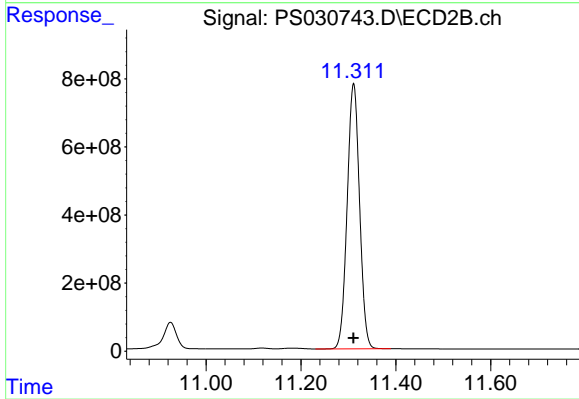
#13 2,4-DB

R.T.: 10.925 min
Delta R.T.: 0.000 min
Response: 1523998169
Conc: 1288.35 ng/ml



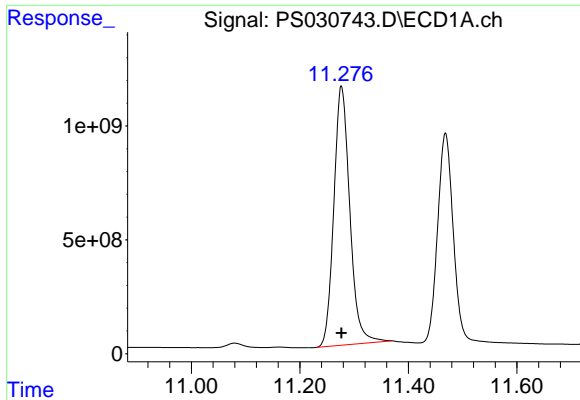
#14 DINOSEB

R.T.: 11.468 min
Delta R.T.: 0.000 min
Response: 18321917167
Conc: 1320.67 ng/ml



#14 DINOSEB

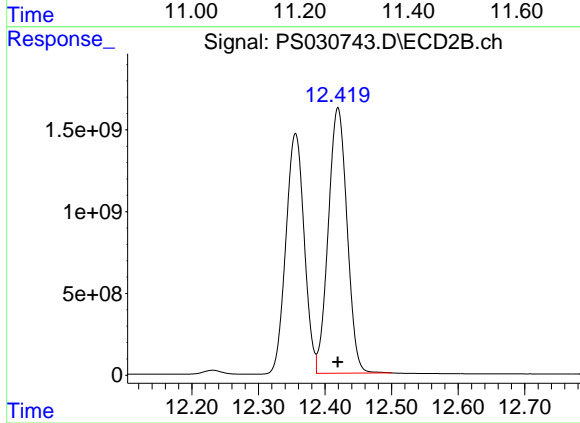
R.T.: 11.311 min
Delta R.T.: 0.000 min
Response: 14096341982
Conc: 1307.49 ng/ml



#15 Picloram

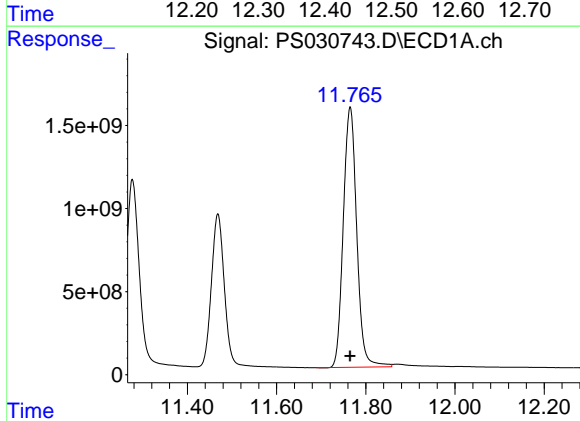
R.T.: 11.276 min
 Delta R.T.: 0.000 min
 Response: 23276825509
 Conc: 1447.91 ng/ml

Instrument :
 ECD_S
 ClientSampleId :
 HSTDICC1500



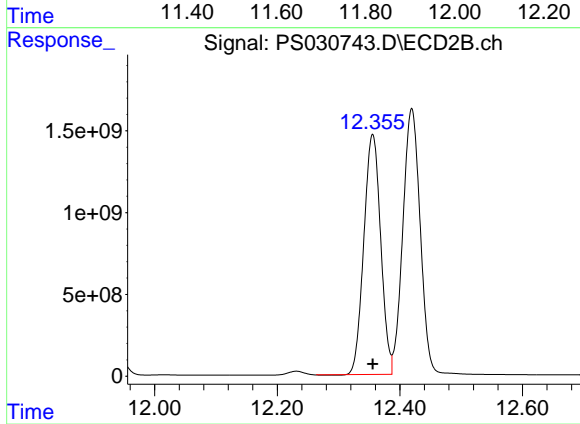
#15 Picloram

R.T.: 12.419 min
 Delta R.T.: 0.000 min
 Response: 31814547037
 Conc: 1368.87 ng/ml



#16 DCPA

R.T.: 11.765 min
 Delta R.T.: 0.000 min
 Response: 32738797312
 Conc: 1278.05 ng/ml



#16 DCPA

R.T.: 12.356 min
 Delta R.T.: 0.000 min
 Response: 27988260472
 Conc: 1269.72 ng/ml