

Data Path : Z:\pestpcbsrv\HPCHEM1\ECD_S\Data\PS061825\
 Data File : PS030744.D
 Signal(s) : Signal #1: ECD1A.ch Signal #2: ECD2B.ch
 Acq On : 18 Jun 2025 14:18
 Operator : AR\AJ
 Sample : HSTDICV750
 Misc :
 ALS Vial : 8 Sample Multiplier: 1

Instrument :
 ECD_S
 ClientSampleId :
 ICVPS061825

Integration File signal 1: autoint1.e
 Integration File signal 2: autoint2.e
 Quant Time: Jun 18 14:34:28 2025
 Quant Method : Z:\pestpcbsrv\HPCHEM1\ECD_S\Method\PS061825.M
 Quant Title : 8080.M
 QLast Update : Wed Jun 18 13:52:27 2025
 Response via : Initial Calibration
 Integrator: ChemStation

Volume Inj. : 1 µl
 Signal #1 Phase : ZB-MR2 Signal #2 Phase: ZB-MR2
 Signal #1 Info : 30M x 0.32mm x0.5 Signal #2 Info : 30M x 0.32mm x 0.25µm

	Compound	RT#1	RT#2	Resp#1	Resp#2	ng/ml	ng/ml

System Monitoring Compounds							
4) S	2,4-DCAA	7.349	7.770	3007.9E6	781.4E6	818.607	728.902
Target Compounds							
1) T	Dalapon	2.710	2.710	4056.7E6	1841.2E6	712.123	671.536
2) T	3,5-DICHL...	6.508	6.715	3653.0E6	1096.7E6	679.304	679.863
3) T	4-Nitroph...	7.149	7.302	1067.2E6	1168.5E6	676.796	674.057
5) T	DICAMBA	7.539	7.972	10807.3E6	4588.7E6	710.304	700.216
6) T	MCP P	7.721	8.072	688.5E6	156.4E6	73.332	74.580
7) T	MCPA	7.871	8.321	828.7E6	223.9E6	70.648	71.187
8) T	DICHLORPROP	8.253	8.691	2460.1E6	1042.7E6	656.766	663.094
9) T	2,4-D	8.486	9.027	2352.8E6	1124.1E6	683.086	661.445
10) T	Pentachlo...	8.794	9.552	38388.3E6	27302.7E6	725.329	716.192
11) T	2,4,5-TP ...	9.375	9.934	14291.4E6	10089.0E6	713.485	699.233
12) T	2,4,5-T	9.669	10.359	12186.1E6	9656.1E6	740.654	706.651
13) T	2,4-DB	10.248	10.927	1788.9E6	824.5E6	779.995	697.026
14) T	DINOSEB	11.467	11.312	9884.9E6	7472.6E6	712.518	693.112
15) T	Picloram	11.276	12.421	11908.4E6	16569.9E6	740.750	712.948
16) T	DCPA	11.763	12.357	18641.3E6	15691.5E6	727.713	711.865

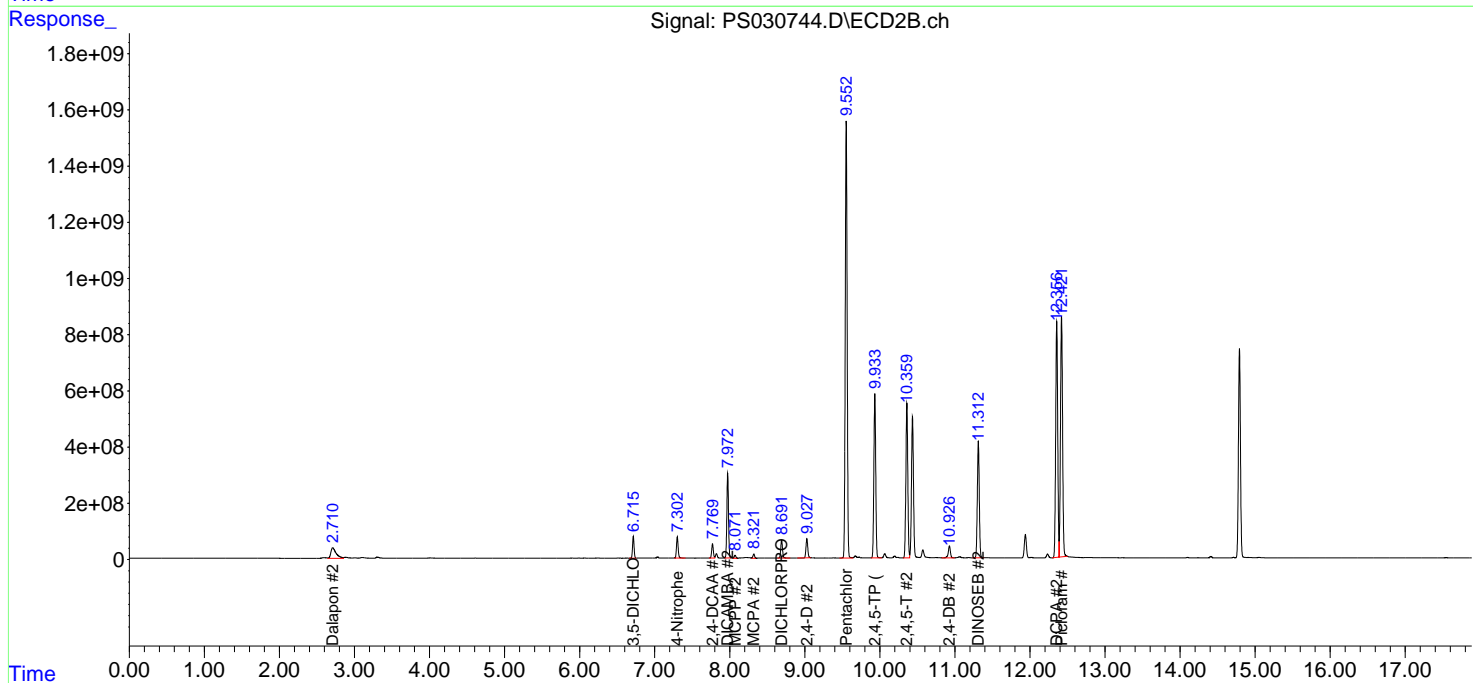
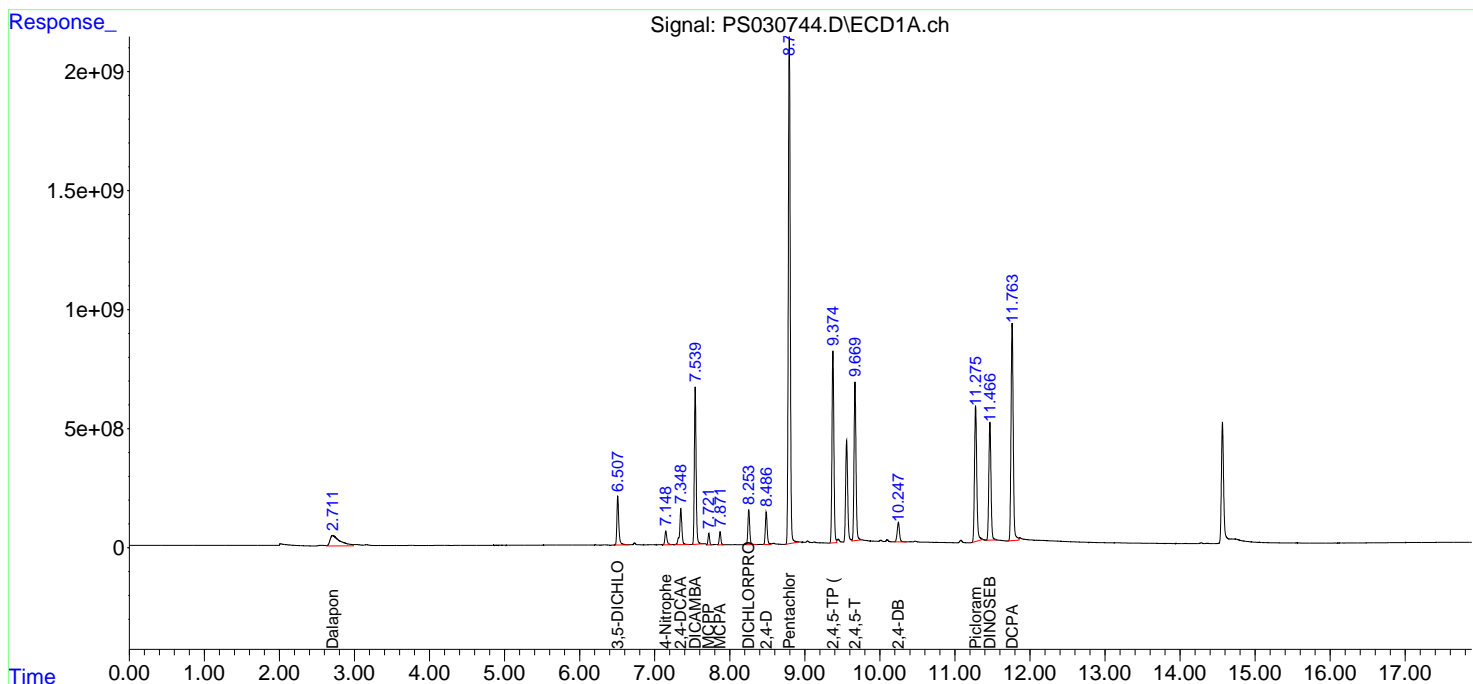
(f)=RT Delta > 1/2 Window (#)=Amounts differ by > 25% (m)=manual int.

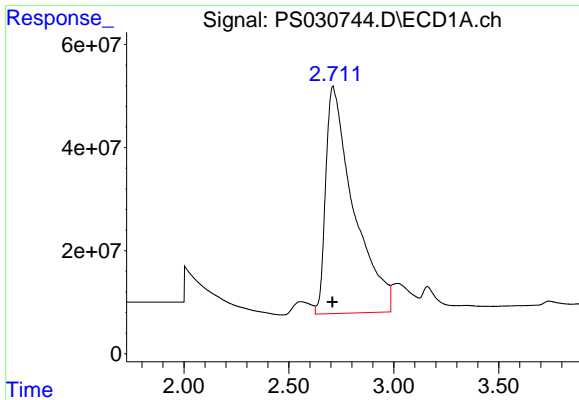
Data Path : Z:\pestpcbsrv\HPCHEM1\ECD_S\Data\PS061825\
 Data File : PS030744.D
 Signal(s) : Signal #1: ECD1A.ch Signal #2: ECD2B.ch
 Acq On : 18 Jun 2025 14:18
 Operator : AR\AJ
 Sample : HSTDICV750
 Misc :
 ALS Vial : 8 Sample Multiplier: 1

Instrument :
 ECD_S
 ClientSampleId :
 ICVPS061825

Integration File signal 1: autoint1.e
 Integration File signal 2: autoint2.e
 Quant Time: Jun 18 14:34:28 2025
 Quant Method : Z:\pestpcbsrv\HPCHEM1\ECD_S\Method\PS061825.M
 Quant Title : 8080.M
 QLast Update : Wed Jun 18 13:52:27 2025
 Response via : Initial Calibration
 Integrator: ChemStation

Volume Inj. : 1 µl
 Signal #1 Phase : ZB-MR1 Signal #2 Phase: ZB-MR2
 Signal #1 Info : 30M x 0.32mm x0.5 Signal #2 Info : 30M x 0.32mm x 0.25µm

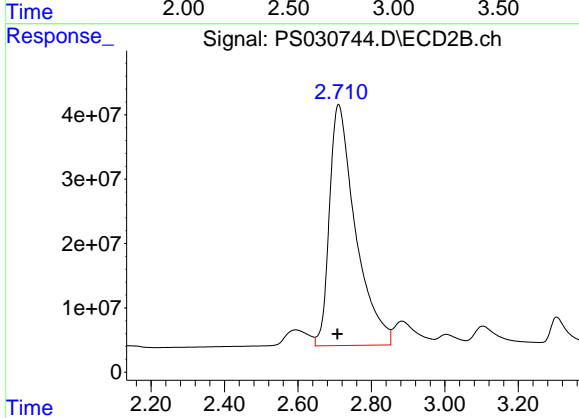




#1 Dalapon

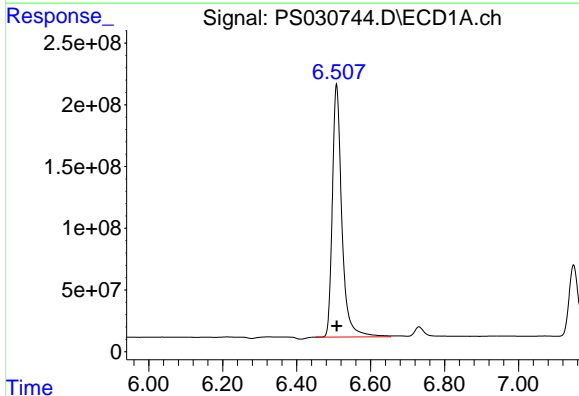
R.T.: 2.710 min
Delta R.T.: 0.002 min
Response: 4056705796
Conc: 712.12 ng/ml

Instrument :
ECD_S
ClientSampleId :
ICVPS061825



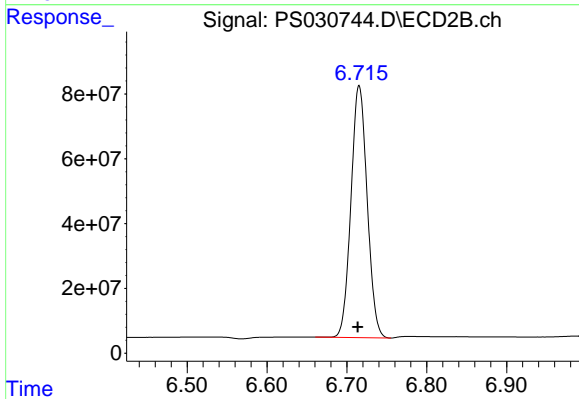
#1 Dalapon

R.T.: 2.710 min
Delta R.T.: 0.003 min
Response: 1841179062
Conc: 671.54 ng/ml



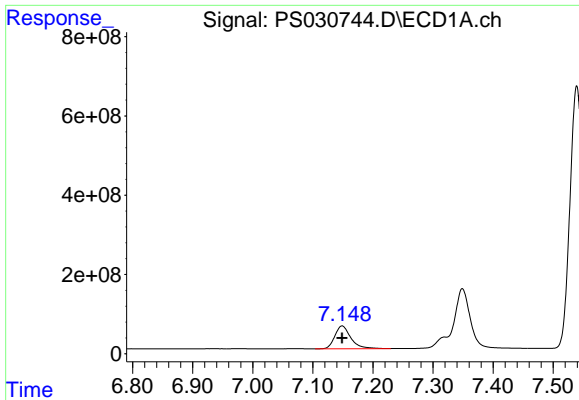
#2 3,5-DICHLOROBENZOIC ACID

R.T.: 6.508 min
Delta R.T.: -0.001 min
Response: 3652993931
Conc: 679.30 ng/ml



#2 3,5-DICHLOROBENZOIC ACID

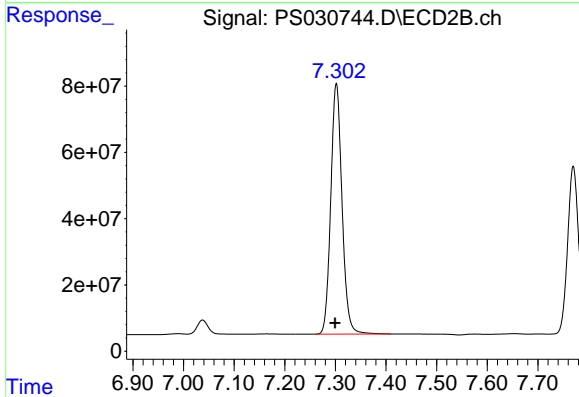
R.T.: 6.715 min
Delta R.T.: 0.002 min
Response: 1096720252
Conc: 679.86 ng/ml



#3 4-Nitrophenol

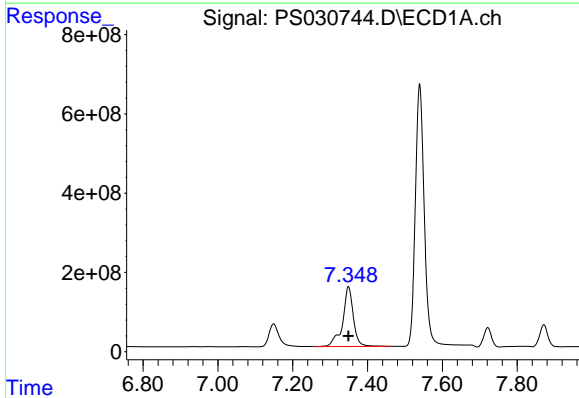
R.T.: 7.149 min
 Delta R.T.: 0.000 min
 Response: 1067150163
 Conc: 676.80 ng/ml

Instrument :
 ECD_S
 ClientSampleId :
 ICVPS061825



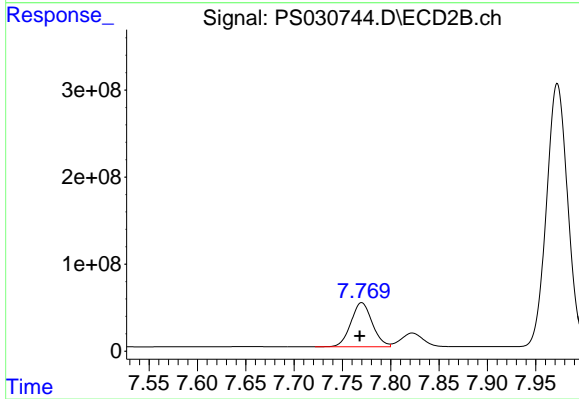
#3 4-Nitrophenol

R.T.: 7.302 min
 Delta R.T.: 0.003 min
 Response: 1168501806
 Conc: 674.06 ng/ml



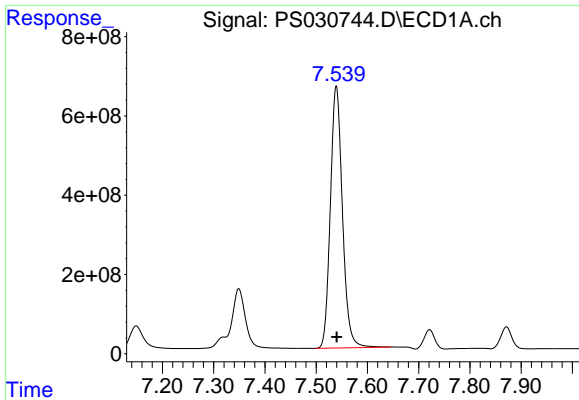
#4 2,4-DCAA

R.T.: 7.349 min
 Delta R.T.: 0.000 min
 Response: 3007884717
 Conc: 818.61 ng/ml



#4 2,4-DCAA

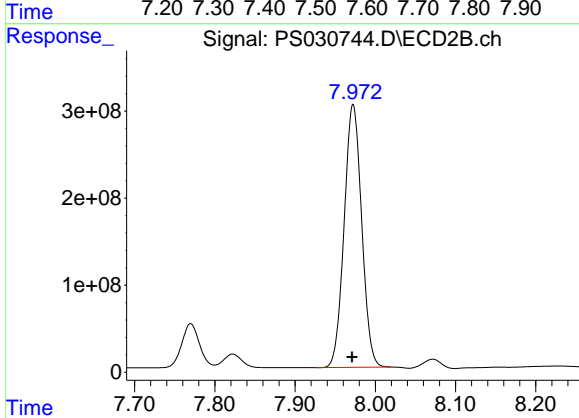
R.T.: 7.770 min
 Delta R.T.: 0.002 min
 Response: 781356298
 Conc: 728.90 ng/ml



#5 DICAMBA

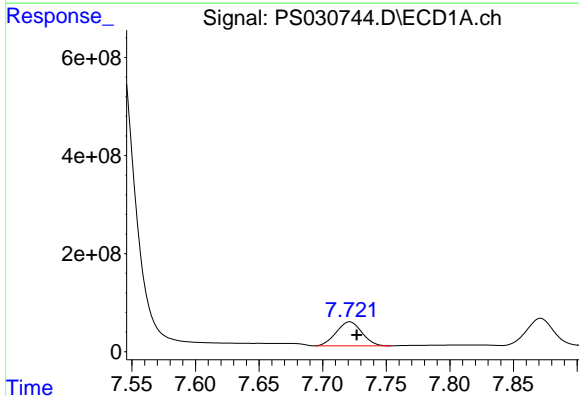
R.T.: 7.539 min
 Delta R.T.: -0.001 min
 Response: 10807342151
 Conc: 710.30 ng/ml

Instrument :
 ECD_S
 ClientSampleId :
 ICVPS061825



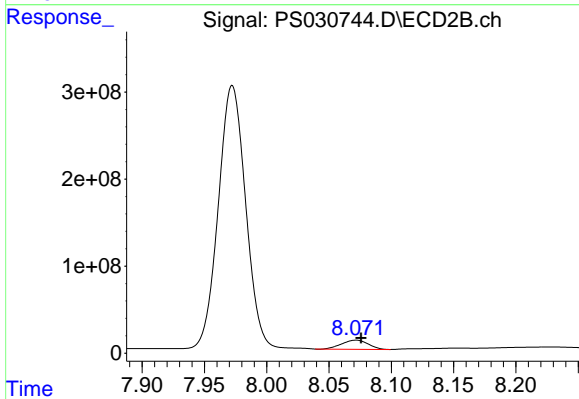
#5 DICAMBA

R.T.: 7.972 min
 Delta R.T.: 0.001 min
 Response: 4588662787
 Conc: 700.22 ng/ml



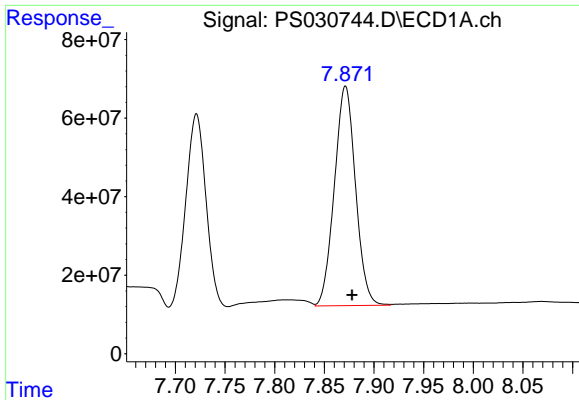
#6 MCPP

R.T.: 7.721 min
 Delta R.T.: -0.006 min
 Response: 688462555
 Conc: 73.33 ug/ml



#6 MCPP

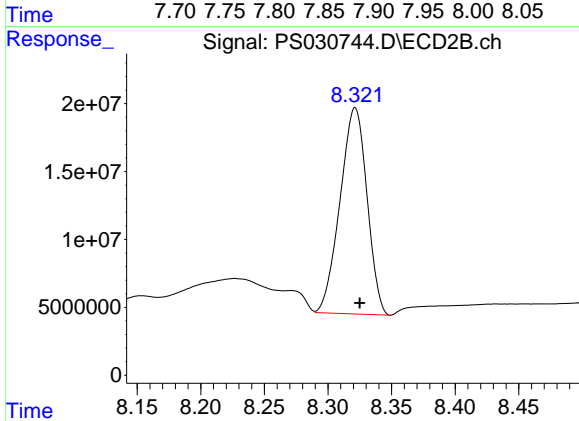
R.T.: 8.072 min
 Delta R.T.: -0.004 min
 Response: 156416874
 Conc: 74.58 ug/ml



#7 MCPA

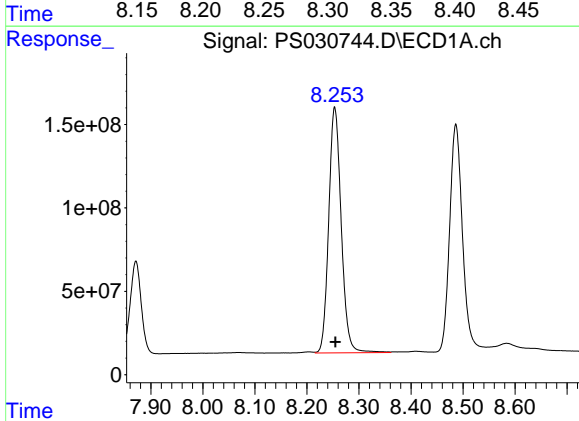
R.T.: 7.871 min
 Delta R.T.: -0.007 min
 Response: 828741336
 Conc: 70.65 ug/ml

Instrument :
 ECD_S
 ClientSampleId :
 ICVPS061825



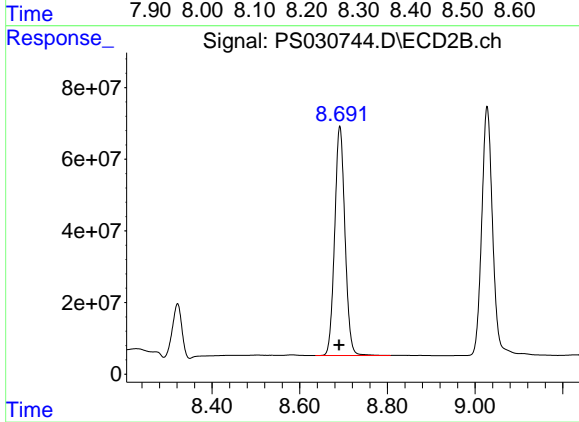
#7 MCPA

R.T.: 8.321 min
 Delta R.T.: -0.004 min
 Response: 223936789
 Conc: 71.19 ug/ml



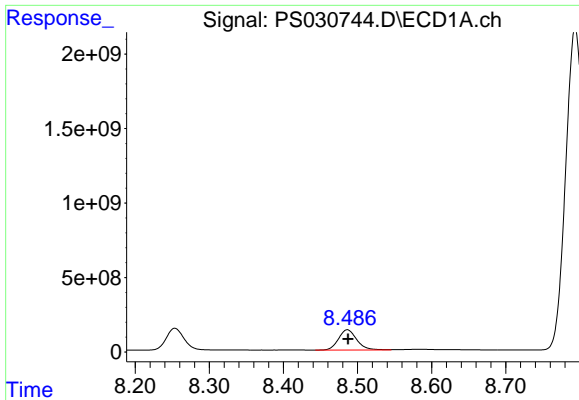
#8 DICHLORPROP

R.T.: 8.253 min
 Delta R.T.: 0.000 min
 Response: 2460091621
 Conc: 656.77 ng/ml



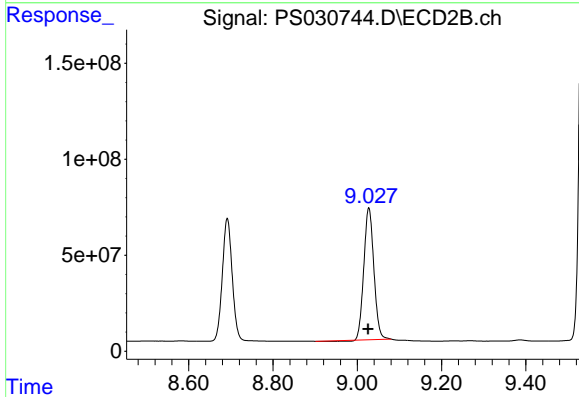
#8 DICHLORPROP

R.T.: 8.691 min
 Delta R.T.: 0.001 min
 Response: 1042712551
 Conc: 663.09 ng/ml

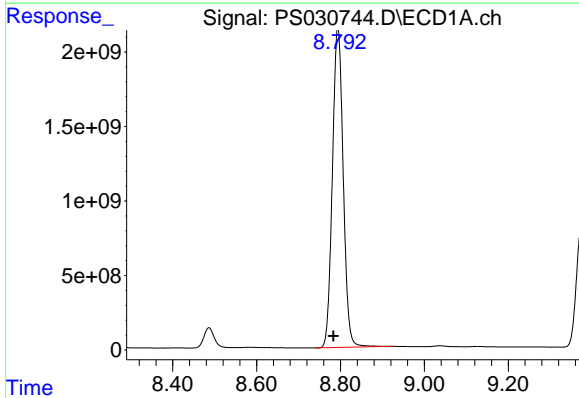


#9 2,4-D
 R.T.: 8.486 min
 Delta R.T.: 0.000 min
 Response: 2352830084
 Conc: 683.09 ng/ml

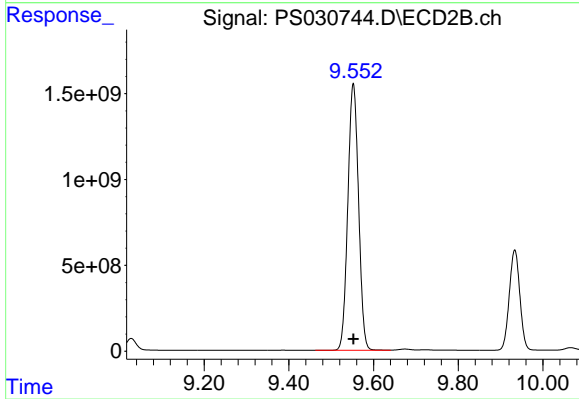
Instrument :
 ECD_S
 ClientSampleId :
 ICVPS061825



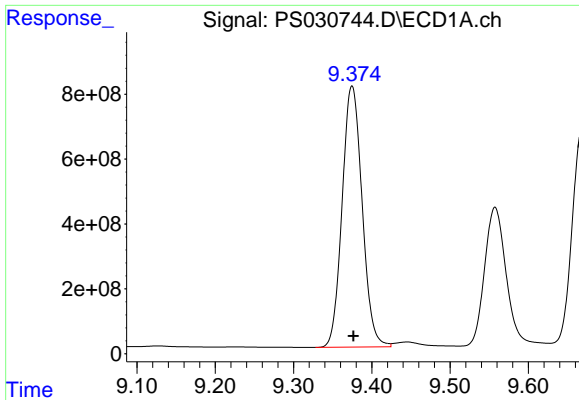
#9 2,4-D
 R.T.: 9.027 min
 Delta R.T.: 0.002 min
 Response: 1124062487
 Conc: 661.44 ng/ml



#10 Pentachlorophenol
 R.T.: 8.794 min
 Delta R.T.: 0.011 min
 Response: 38388332733
 Conc: 725.33 ng/ml



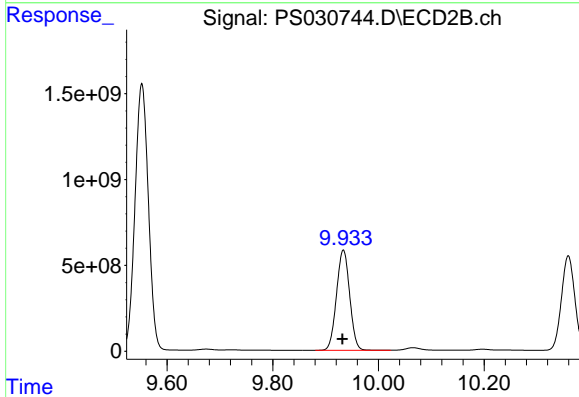
#10 Pentachlorophenol
 R.T.: 9.552 min
 Delta R.T.: 0.000 min
 Response: 27302745086
 Conc: 716.19 ng/ml



#11 2,4,5-TP (SILVEX)

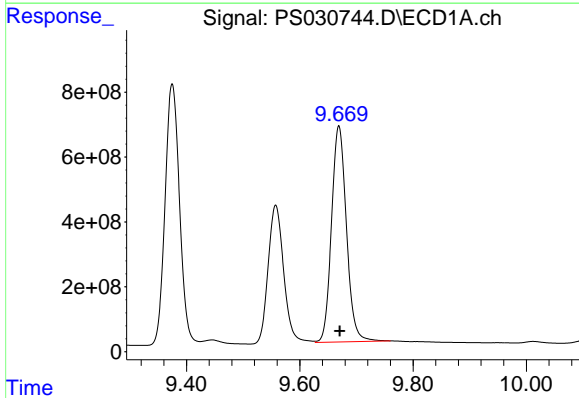
R.T.: 9.375 min
 Delta R.T.: -0.002 min
 Response: 14291401500
 Conc: 713.49 ng/ml

Instrument :
 ECD_S
 ClientSampleId :
 ICVPS061825



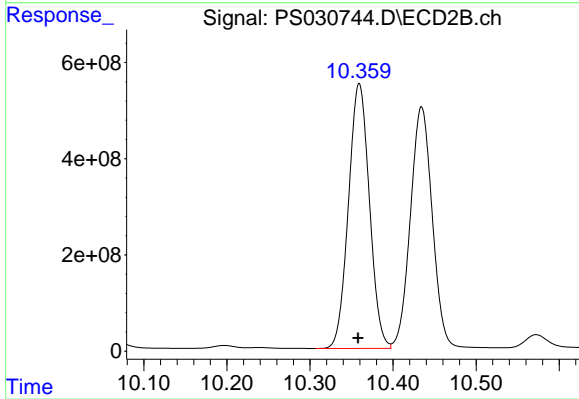
#11 2,4,5-TP (SILVEX)

R.T.: 9.934 min
 Delta R.T.: 0.002 min
 Response: 10089023893
 Conc: 699.23 ng/ml



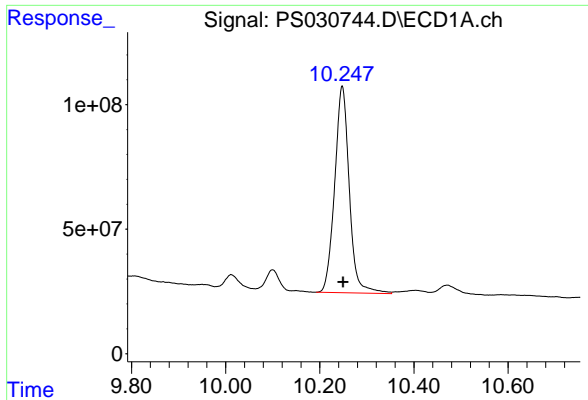
#12 2,4,5-T

R.T.: 9.669 min
 Delta R.T.: -0.001 min
 Response: 12186092877
 Conc: 740.65 ng/ml



#12 2,4,5-T

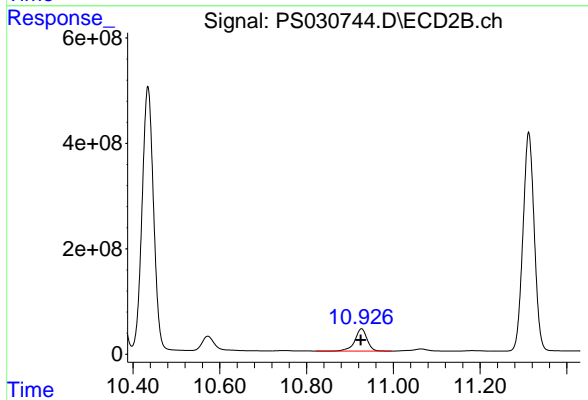
R.T.: 10.359 min
 Delta R.T.: 0.002 min
 Response: 9656126345
 Conc: 706.65 ng/ml



#13 2,4-DB

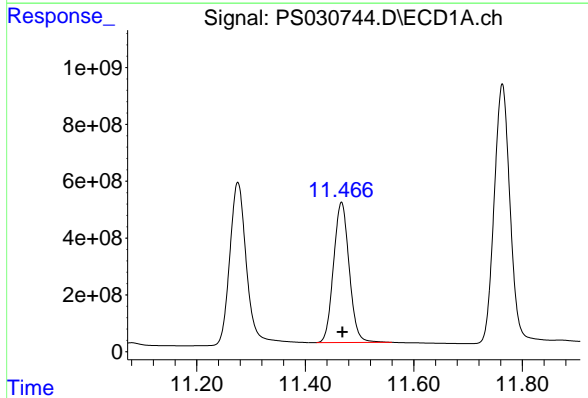
R.T.: 10.248 min
 Delta R.T.: -0.002 min
 Response: 1788920802
 Conc: 780.00 ng/ml

Instrument :
 ECD_S
 ClientSampleId :
 ICVPS061825



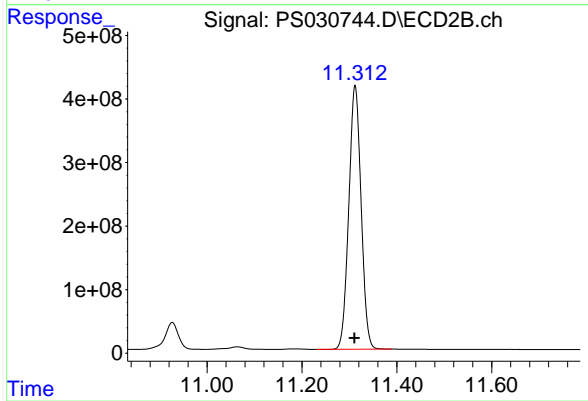
#13 2,4-DB

R.T.: 10.927 min
 Delta R.T.: 0.002 min
 Response: 824513963
 Conc: 697.03 ng/ml



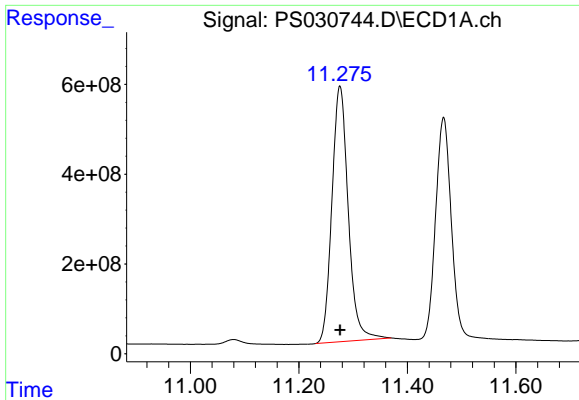
#14 DINOSEB

R.T.: 11.467 min
 Delta R.T.: -0.002 min
 Response: 9884896443
 Conc: 712.52 ng/ml



#14 DINOSEB

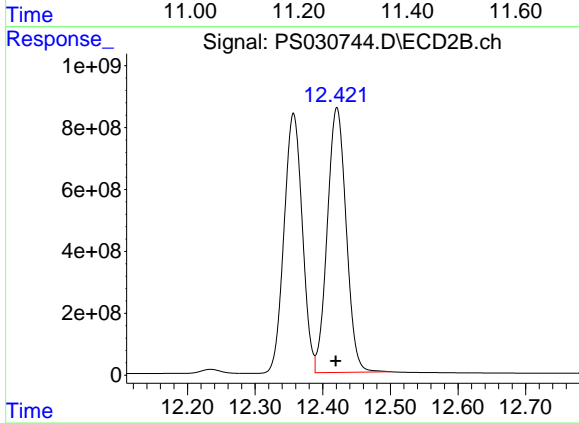
R.T.: 11.312 min
 Delta R.T.: 0.001 min
 Response: 7472608497
 Conc: 693.11 ng/ml



#15 Picloram

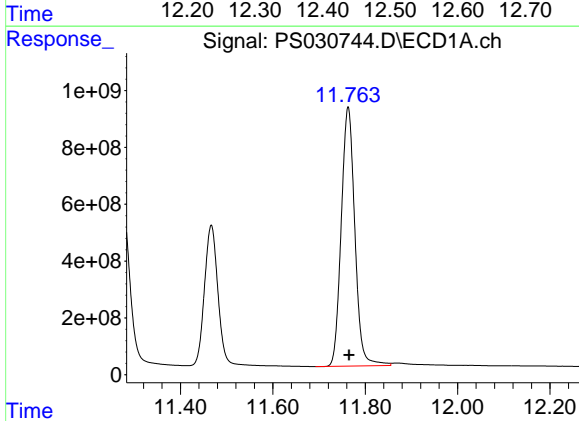
R.T.: 11.276 min
 Delta R.T.: 0.000 min
 Response: 11908385467
 Conc: 740.75 ng/ml

Instrument :
 ECD_S
 ClientSampleId :
 ICVPS061825



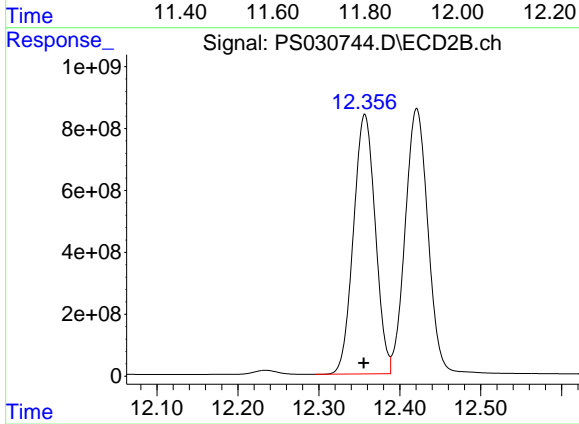
#15 Picloram

R.T.: 12.421 min
 Delta R.T.: 0.002 min
 Response: 16569918605
 Conc: 712.95 ng/ml



#16 DCPA

R.T.: 11.763 min
 Delta R.T.: -0.002 min
 Response: 18641277132
 Conc: 727.71 ng/ml



#16 DCPA

R.T.: 12.357 min
 Delta R.T.: 0.001 min
 Response: 15691492514
 Conc: 711.87 ng/ml