

Data Path : Z:\svoasrv\HPCHEM1\BNA_F\Data\BF070925\
 Data File : BF143069.D
 Acq On : 09 Jul 2025 21:35
 Operator : RC/JU
 Sample : Q2487-15 5X
 Misc :
 ALS Vial : 23 Sample Multiplier: 1

Instrument :
 BNA_F
 ClientSampleId :
 G1(0-6)

Integration Parameters: rteint.p
 Integrator: RTE
 Smoothing : ON
 Sampling : 1
 Start Thrs : 0.2
 Stop Thrs : 0
 Filtering: 5
 Min Area: 3 % of largest Peak
 Max Peaks: 100
 Peak Location: TOP

If leading or trailing edge < 100 prefer < Baseline drop else tangent >
 Peak separation: 5

Method : Z:\svoasrv\HPCHEM1\BNA_F\Methods\8270-BF061925.M
 Title : ASP BNA STANDARDS FOR 5 POINT CALIBRATION

Signal : TIC: BF143069.D\data.ms

peak #	R.T. min	first scan	max scan	last scan	PK TY	peak height	corr. area	corr. % max.	% of total
1	5.075	486	490	498	rBV	4401	7107	1.58%	0.229%
2	5.493	556	561	573	rBV	53075	83878	18.64%	2.702%
3	6.504	728	733	744	rBV	49563	80452	17.88%	2.592%
4	6.869	790	795	806	rBV	175564	221341	49.19%	7.131%
5	7.434	886	891	904	rBV	34276	50077	11.13%	1.613%
6	8.157	1009	1014	1039	rVB	203663	263306	58.51%	8.483%
7	9.228	1192	1196	1206	rBV	74798	94345	20.97%	3.040%
8	9.910	1307	1312	1317	rBV	194883	248532	55.23%	8.007%
9	10.463	1402	1406	1411	rVB	3847	4613	1.03%	0.149%
10	10.628	1428	1434	1439	rVB	8167	11345	2.52%	0.366%
11	10.704	1439	1447	1456	rBV	36973	48647	10.81%	1.567%
12	10.810	1462	1465	1474	rVB	2559	4578	1.02%	0.147%
13	11.298	1543	1548	1553	rVB3	3138	5617	1.25%	0.181%
14	11.404	1561	1566	1575	rBV2	225560	366278	81.40%	11.801%
15	11.480	1575	1579	1583	rVB	13785	16876	3.75%	0.544%
16	11.639	1602	1606	1611	rBV2	4107	6081	1.35%	0.196%
17	11.692	1611	1615	1620	rVB5	2535	4728	1.05%	0.152%
18	11.904	1647	1651	1654	rBV	11292	16580	3.68%	0.534%
19	11.933	1654	1656	1661	rVV	17033	20687	4.60%	0.666%
20	11.986	1661	1665	1667	rVV2	5257	7915	1.76%	0.255%
21	12.022	1667	1671	1680	rVB2	19202	37750	8.39%	1.216%
22	12.204	1697	1702	1704	rBV	8365	11273	2.51%	0.363%
23	12.233	1704	1707	1711	rVB2	5917	7506	1.67%	0.242%
24	12.351	1722	1727	1729	rBV3	3854	6468	1.44%	0.208%
25	12.457	1741	1745	1748	rBV	10856	16170	3.59%	0.521%
26	12.551	1757	1761	1765	rVB3	6725	9145	2.03%	0.295%
27	12.622	1768	1773	1778	rBV	127200	159977	35.55%	5.154%
28	12.851	1805	1812	1818	rBV	131908	196744	43.72%	6.339%
29	12.904	1818	1821	1824	rVB3	5650	7285	1.62%	0.235%
30	12.986	1830	1835	1843	rVB	115386	158844	35.30%	5.118%
31	13.069	1844	1849	1856	rBV6	12735	30867	6.86%	0.994%
32	13.174	1861	1867	1871	rBV	18942	34088	7.58%	1.098%
33	13.245	1876	1879	1882	rVV	8606	10352	2.30%	0.334%
34	13.280	1882	1885	1889	rBV2	9940	14077	3.13%	0.454%
35	13.374	1899	1901	1904	rBV	6771	7908	1.76%	0.255%
36	13.410	1904	1907	1915	rVB4	10949	20222	4.49%	0.652%

Data Path : Z:\svoasrv\HPCHEM1\BNA_F\Data\BF070925\
Data File : BF143069.D
Acq On : 09 Jul 2025 21:35
Operator : RC/JU
Sample : Q2487-15 5X
Misc :
ALS Vial : 23 Sample Multiplier: 1

Instrument :
BNA_F
ClientSampleId :
G1(0-6)

Integration Parameters: rteint.p
Integrator: RTE
Smoothing : ON Filtering: 5
Sampling : 1 Min Area: 3 % of largest Peak
Start Thrs: 0.2 Max Peaks: 100
Stop Thrs : 0 Peak Location: TOP

If leading or trailing edge < 100 prefer < Baseline drop else tangent >
Peak separation: 5

Method : Z:\svoasrv\HPCHEM1\BNA_F\Methods\8270-BF061925.M
Title : ASP BNA STANDARDS FOR 5 POINT CALIBRATION

37	14.051	2010	2016	2029	rBV2	261501	449996	100.00%	14.498%
38	15.110	2192	2196	2203	rBV	34997	71670	15.93%	2.309%
39	15.486	2256	2260	2265	rBV	31470	51306	11.40%	1.653%
40	15.551	2266	2271	2285	rVB	127391	239229	53.16%	7.707%

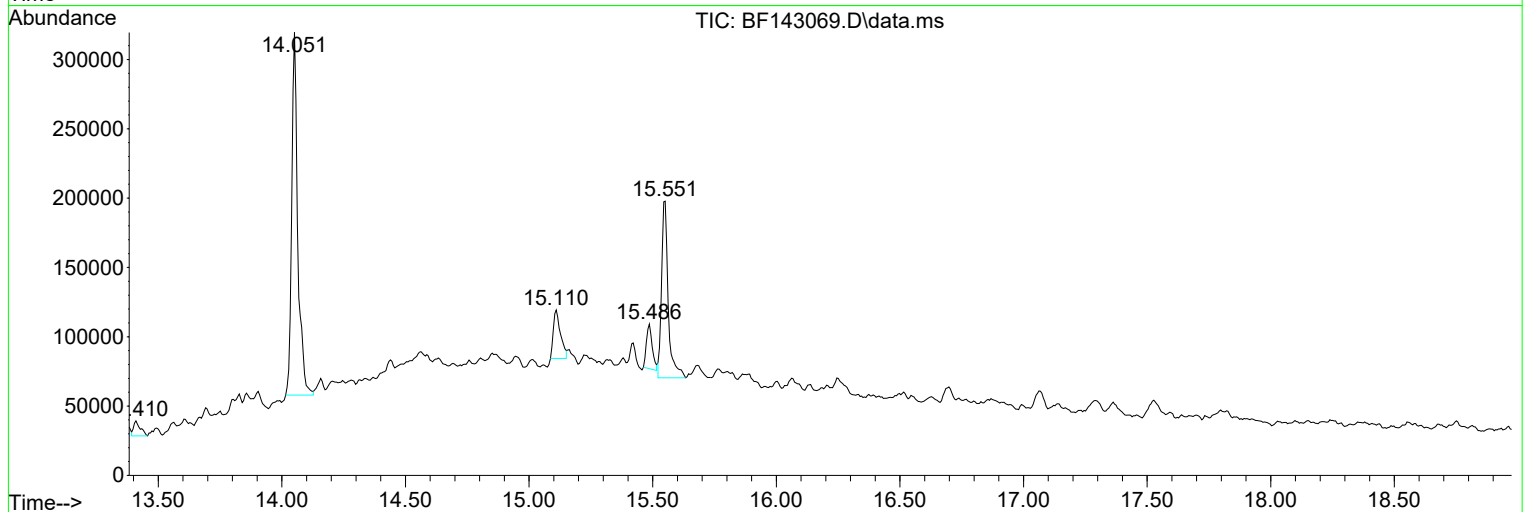
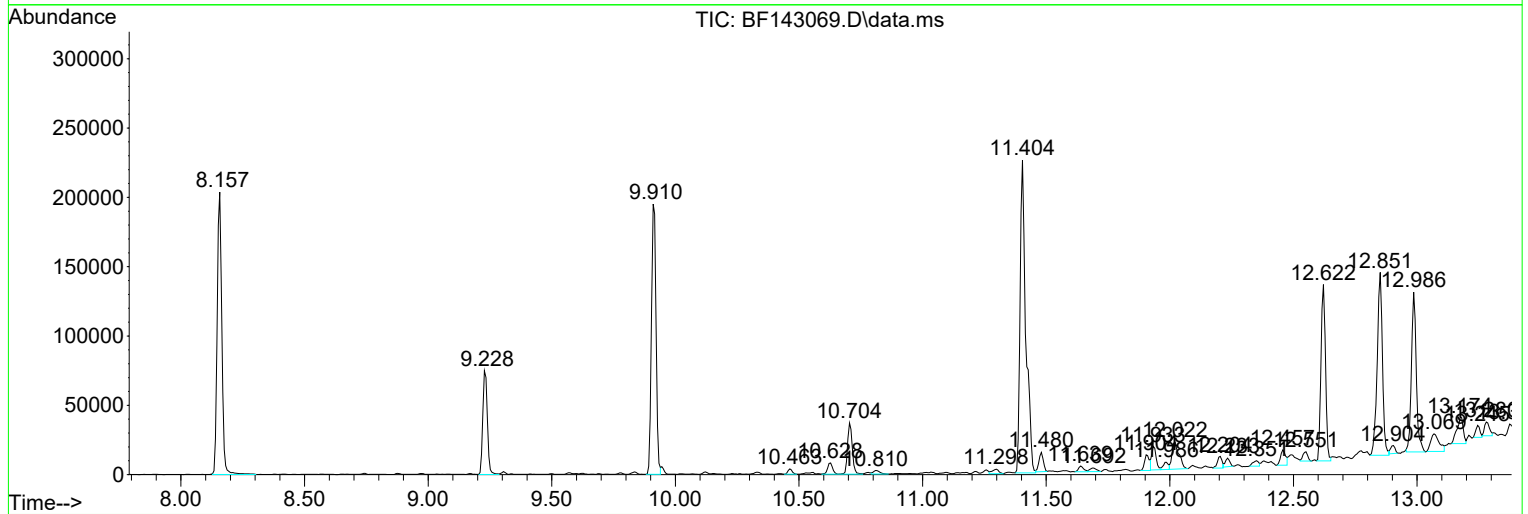
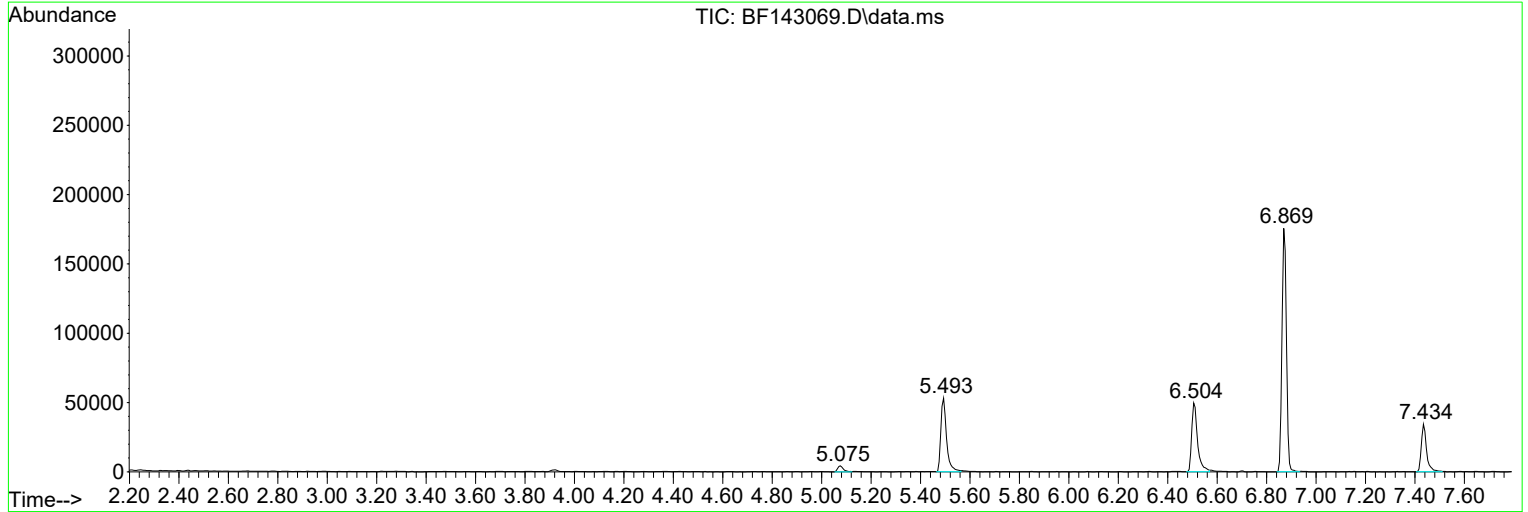
Sum of corrected areas: 3103860

Data Path : Z:\svoasrv\HPCHEM1\BNA_F\Data\BF070925\
 Data File : BF143069.D
 Acq On : 09 Jul 2025 21:35
 Operator : RC/JU
 Sample : Q2487-15 5X
 Misc :
 ALS Vial : 23 Sample Multiplier: 1

Instrument :
 BNA_F
 ClientSampleId :
 G1(0-6)

Quant Method : Z:\svoasrv\HPCHEM1\BNA_F\Methods\8270-BF061925.M
 Quant Title : ASP BNA STANDARDS FOR 5 POINT CALIBRATION

TIC Library : C:\Database\NIST20.L
 TIC Integration Parameters: LSCINT.P



Data Path : Z:\svoasrv\HPCHEM1\BNA_F\Data\BF070925\
 Data File : BF143069.D
 Acq On : 09 Jul 2025 21:35
 Operator : RC/JU
 Sample : Q2487-15 5X
 Misc :
 ALS Vial : 23 Sample Multiplier: 1

Instrument :
 BNA_F
 ClientSampleId :
 G1(0-6)

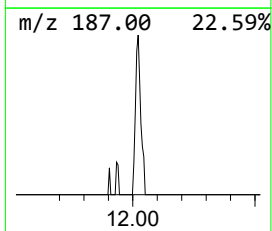
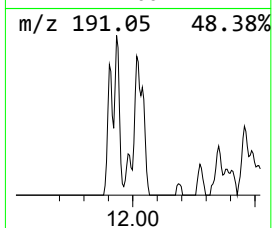
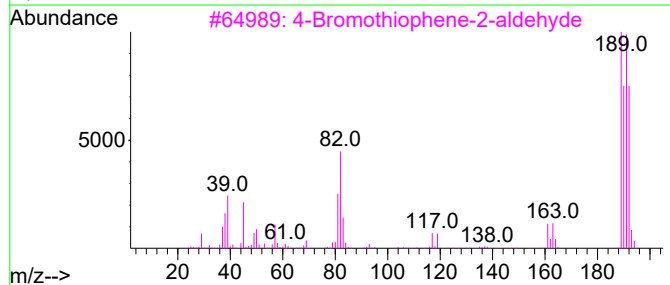
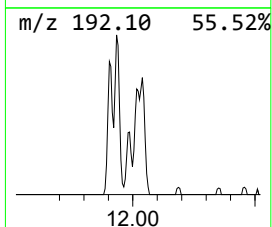
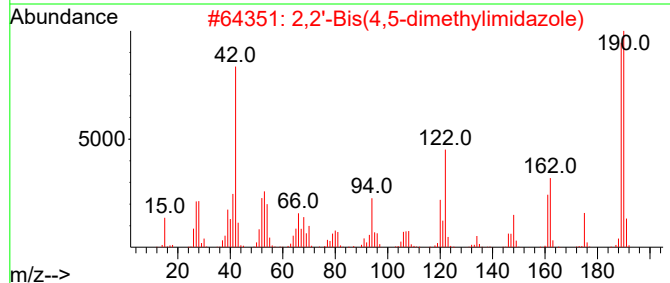
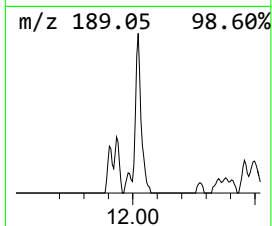
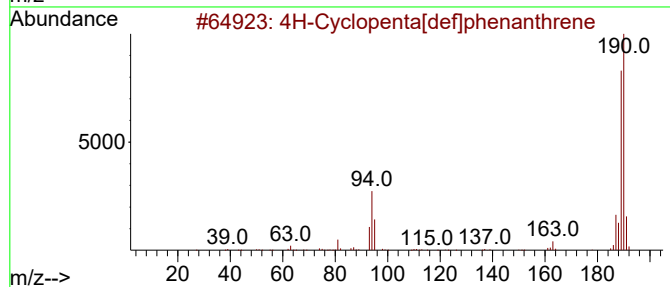
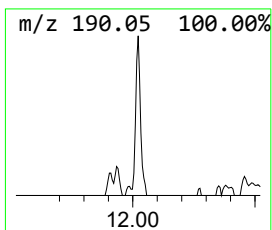
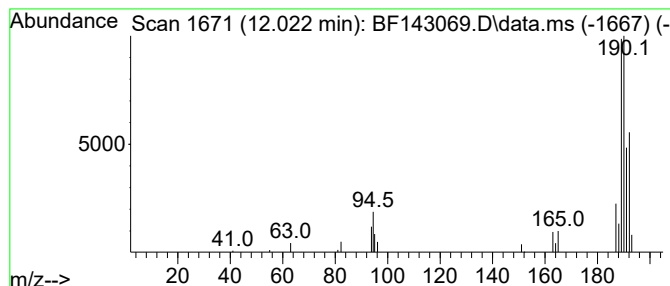
Quant Method : Z:\svoasrv\HPCHEM1\BNA_F\Methods\8270-BF061925.M
 Quant Title : ASP BNA STANDARDS FOR 5 POINT CALIBRATION

TIC Library : C:\Database\NIST20.L
 TIC Integration Parameters: LSCINT.P

 Peak Number 1 4H-Cyclopenta[def]phenanthrene Concentration Rank 1

R.T.	EstConc	Area	Relative to ISTD	R.T.
12.022	2.06 ng	37750	Phenanthrene-d10	11.404

Hit#	of 5	Tentative ID	MW	MolForm	CAS#	Qual
1		4H-Cyclopenta[def]phenanthrene	190	C15H10	000203-64-5	58
2		2,2'-Bis(4,5-dimethylimidazole)	190	C10H14N4	069286-06-2	38
3		4-Bromothiophene-2-aldehyde	190	C5H3BrOS	018791-75-8	37
4		5H-Dibenzo[a,d]cycloheptene	192	C15H12	000256-81-5	22
5		Propyne, 1,3-diphenyl-	192	C15H12	004980-70-5	14



Data Path : Z:\svoasrv\HPCHEM1\BNA_F\Data\BF070925\
Data File : BF143069.D
Acq On : 09 Jul 2025 21:35
Operator : RC/JU
Sample : Q2487-15 5X
Misc :
ALS Vial : 23 Sample Multiplier: 1

Instrument :
BNA_F
ClientSampleId :
G1(0-6)

Quant Method : Z:\svoasrv\HPCHEM1\BNA_F\Methods\8270-BF061925.M
Quant Title : ASP BNA STANDARDS FOR 5 POINT CALIBRATION

TIC Library : C:\Database\NIST20.L
TIC Integration Parameters: LSCINT.P

TIC Top Hit name	RT	EstConc	Units	Response	--Internal Standard--			
					#	RT	Resp	Conc
4H-Cyclopenta[d...	12.022	2.1	ng	37750	4	11.404	366278	20.0