

Data Path : Z:\svoasrv\HPCHEM1\BNA_F\Data\BF070825\
 Data File : BF143025.D
 Acq On : 08 Jul 2025 10:54
 Operator : RC/JU
 Sample : SSTDCCC040
 Misc :
 ALS Vial : 2 Sample Multiplier: 1

Instrument :
 BNA_F
 ClientSampleId :
 SSTDCCC040

Quant Time: Jul 08 12:00:55 2025
 Quant Method : Z:\svoasrv\HPCHEM1\BNA_F\Methods\8270-BF061925.M
 Quant Title : ASP BNA STANDARDS FOR 5 POINT CALIBRATION
 QLast Update : Tue Jun 24 05:28:21 2025
 Response via : Initial Calibration

Compound	R.T.	QIon	Response	Conc	Units	Dev(Min)	
Internal Standards							
1) 1,4-Dichlorobenzene-d4	6.875	152	66813	20.000	ng	0.00	
21) Naphthalene-d8	8.163	136	257725	20.000	ng	0.00	
39) Acenaphthene-d10	9.922	164	136330	20.000	ng	0.00	
64) Phenanthrene-d10	11.410	188	218169	20.000	ng	0.00	
76) Chrysene-d12	14.063	240	109391	20.000	ng	0.00	
86) Perylene-d12	15.557	264	135350	20.000	ng	0.01	
System Monitoring Compounds							
5) 2-Fluorophenol	5.493	112	316247	78.806	ng	0.00	
7) Phenol-d6	6.510	99	369973	78.144	ng	0.00	
23) Nitrobenzene-d5	7.445	82	397254	84.546	ng	0.00	
42) 2,4,6-Tribromophenol	10.716	330	108910	77.630	ng	0.00	
45) 2-Fluorobiphenyl	9.239	172	846426	81.561	ng	0.00	
79) Terphenyl-d14	12.998	244	672150	84.898	ng	0.00	
Target Compounds							
2) 1,4-Dioxane	2.616	88	57982	36.124	ng		Qvalue 98
3) Pyridine	3.399	79	151473	37.643	ng		98
4) n-Nitrosodimethylamine	3.346	42	77170	37.086	ng		99
6) Aniline	6.540	93	244676	38.839	ng	#	88
8) 2-Chlorophenol	6.663	128	170496	39.386	ng		99
9) Benzaldehyde	6.428	77	120691	42.967	ng		99
10) Phenol	6.528	94	207080	39.348	ng		82
11) bis(2-Chloroethyl)ether	6.610	93	147243	39.146	ng		97
12) 1,3-Dichlorobenzene	6.816	146	191514	39.558	ng		99
13) 1,4-Dichlorobenzene	6.892	146	192667	39.445	ng		99
14) 1,2-Dichlorobenzene	7.045	146	182982	39.496	ng		100
15) Benzyl Alcohol	7.022	79	136943	40.010	ng		98
16) 2,2'-oxybis(1-Chloropr...	7.151	45	219851	36.380	ng		88
17) 2-Methylphenol	7.134	107	129961	39.617	ng		98
18) Hexachloroethane	7.387	117	66538	38.946	ng		95
19) n-Nitroso-di-n-propyla...	7.292	70	107553	39.059	ng		98
20) 3+4-Methylphenols	7.287	107	163708	40.025	ng		95
22) Acetophenone	7.287	105	222206	39.098	ng		98
24) Nitrobenzene	7.463	77	162450	38.199	ng		98
25) Isophorone	7.704	82	291979	38.737	ng		99
26) 2-Nitrophenol	7.781	139	93437	40.333	ng		98
27) 2,4-Dimethylphenol	7.816	122	155161	38.666	ng		100
28) bis(2-Chloroethoxy)met...	7.910	93	186301	38.878	ng		100
29) 2,4-Dichlorophenol	8.022	162	141839	38.983	ng		99
30) 1,2,4-Trichlorobenzene	8.104	180	155378	38.835	ng		99
31) Naphthalene	8.187	128	490610	38.890	ng		99
32) Benzoic acid	7.939	122	72155	35.279	ng		96
33) 4-Chloroaniline	8.234	127	201664	39.314	ng		98
34) Hexachlorobutadiene	8.298	225	95500	39.023	ng		99
35) Caprolactam	8.610	113	40230	41.901	ng		92
36) 4-Chloro-3-methylphenol	8.722	107	142124	39.303	ng		98
37) 2-Methylnaphthalene	8.875	142	306009	39.127	ng		99
38) 1-Methylnaphthalene	8.975	142	315141	38.925	ng		99
40) 1,2,4,5-Tetrachloroben...	9.045	216	156502	38.905	ng		99
41) Hexachlorocyclopentadiene	9.028	237	92877	40.686	ng		98
43) 2,4,6-Trichlorophenol	9.157	196	100080	38.180	ng		99

Data Path : Z:\svoasrv\HPCHEM1\BNA_F\Data\BF070825\
 Data File : BF143025.D
 Acq On : 08 Jul 2025 10:54
 Operator : RC/JU
 Sample : SSTDCCC040
 Misc :
 ALS Vial : 2 Sample Multiplier: 1

Instrument :
 BNA_F
 ClientSampleId :
 SSTDCCC040

Quant Time: Jul 08 12:00:55 2025
 Quant Method : Z:\svoasrv\HPCHEM1\BNA_F\Methods\8270-BF061925.M
 Quant Title : ASP BNA STANDARDS FOR 5 POINT CALIBRATION
 QLast Update : Tue Jun 24 05:28:21 2025
 Response via : Initial Calibration

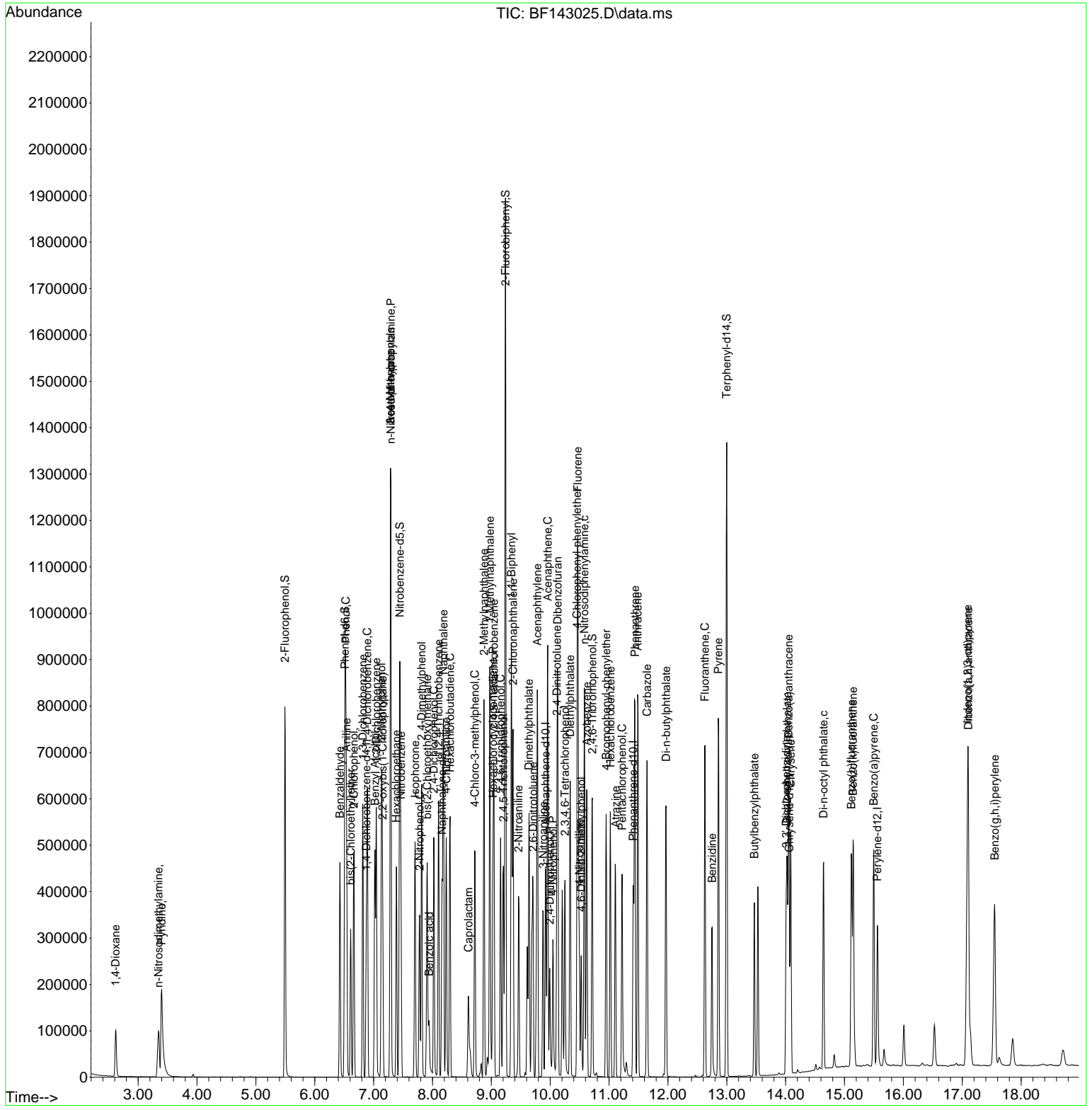
Compound	R.T.	QIon	Response	Conc	Units	Dev(Min)
44) 2,4,5-Trichlorophenol	9.204	196	104339	37.813	ng	99
46) 1,1'-Biphenyl	9.339	154	410792	38.145	ng	100
47) 2-Chloronaphthalene	9.369	162	306622	37.941	ng	99
48) 2-Nitroaniline	9.463	65	88943	39.256	ng	100
49) Acenaphthylene	9.781	152	505519	37.997	ng	99
50) Dimethylphthalate	9.639	163	350801	39.752	ng	99
51) 2,6-Dinitrotoluene	9.710	165	75946	39.188	ng	95
52) Acenaphthene	9.957	154	294439	36.274	ng	100
53) 3-Nitroaniline	9.881	138	82962	38.881	ng	99
54) 2,4-Dinitrophenol	9.992	184	51195	52.757	ng	96
55) Dibenzofuran	10.128	168	445423	38.268	ng	99
56) 4-Nitrophenol	10.045	139	70555	48.300	ng	96
57) 2,4-Dinitrotoluene	10.116	165	102608	39.860	ng	95
58) Fluorene	10.469	166	354875	39.038	ng	99
59) 2,3,4,6-Tetrachlorophenol	10.251	232	83670	37.618	ng	94
60) Diethylphthalate	10.339	149	338403	39.111	ng	99
61) 4-Chlorophenyl-phenyle...	10.457	204	169854	39.156	ng	98
62) 4-Nitroaniline	10.492	138	76818	39.365	ng	98
63) Azobenzene	10.622	77	293688	37.977	ng	98
65) 4,6-Dinitro-2-methylph...	10.528	198	52231	39.580	ng	99
66) n-Nitrosodiphenylamine	10.580	169	298183	39.436	ng	99
67) 4-Bromophenyl-phenylether	10.951	248	100343	40.413	ng	97
68) Hexachlorobenzene	11.022	284	109501	39.689	ng	99
69) Atrazine	11.110	200	82526	42.266	ng	100
70) Pentachlorophenol	11.222	266	80900	58.845	ng	97
71) Phenanthrene	11.439	178	458805	38.822	ng	100
72) Anthracene	11.486	178	475083	39.196	ng	100
73) Carbazole	11.645	167	396286	37.887	ng	100
74) Di-n-butylphthalate	11.969	149	445869	40.919	ng	100
75) Fluoranthene	12.627	202	418605	37.322	ng	100
77) Benzidine	12.751	184	200477	48.779	ng	99
78) Pyrene	12.857	202	467410	45.585	ng	99
80) Butylbenzylphthalate	13.469	149	125308	42.130	ng	96
81) Benzo(a)anthracene	14.051	228	286505	38.824	ng	100
82) 3,3'-Dichlorobenzidine	14.010	252	97033	40.538	ng	99
83) Chrysene	14.086	228	253970	38.568	ng	100
84) Bis(2-ethylhexyl)phtha...	14.027	149	169570	39.625	ng	100
85) Di-n-octyl phthalate	14.645	149	323589	40.101	ng	98
87) Indeno(1,2,3-cd)pyrene	17.092	276	408600	39.633	ng	99
88) Benzo(b)fluoranthene	15.115	252	306592	39.146	ng	100
89) Benzo(k)fluoranthene	15.145	252	268010	36.576	ng	100
90) Benzo(a)pyrene	15.498	252	295042	38.995	ng	99
91) Dibenzo(a,h)anthracene	17.104	278	326448	38.971	ng	98
92) Benzo(g,h,i)perylene	17.551	276	324337	38.829	ng	98

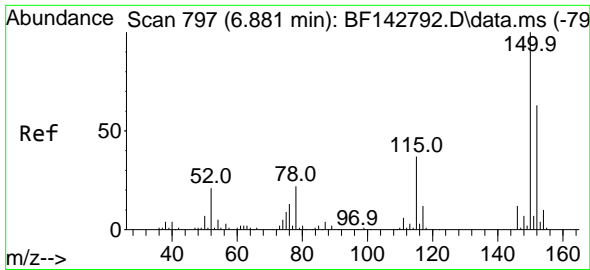
(#) = qualifier out of range (m) = manual integration (+) = signals summed

Data Path : Z:\svoasrv\HPCHEM1\BNA_F\Data\BF070825\
 Data File : BF143025.D
 Acq On : 08 Jul 2025 10:54
 Operator : RC/JU
 Sample : SSTDCCC040
 Misc :
 ALS Vial : 2 Sample Multiplier: 1

Instrument :
 BNA_F
 ClientSampleId :
 SSTDCCC040

Quant Time: Jul 08 12:00:55 2025
 Quant Method : Z:\svoasrv\HPCHEM1\BNA_F\Methods\8270-BF061925.M
 Quant Title : ASP BNA STANDARDS FOR 5 POINT CALIBRATION
 QLast Update : Tue Jun 24 05:28:21 2025
 Response via : Initial Calibration

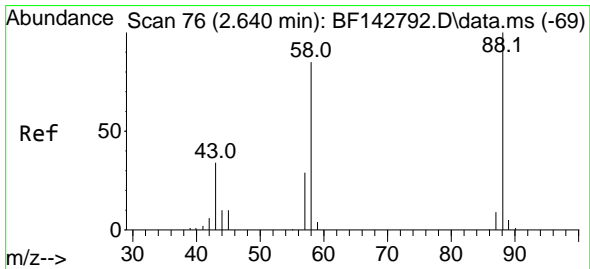
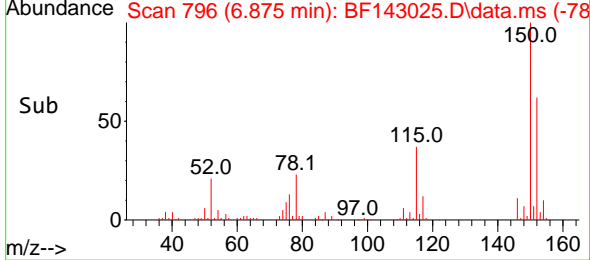
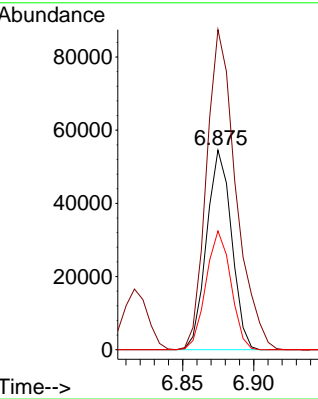
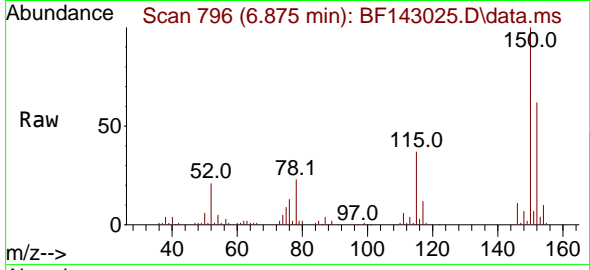




#1
 1,4-Dichlorobenzene-d4
 Concen: 20.000 ng
 RT: 6.875 min Scan# 79
 Delta R.T. -0.006 min
 Lab File: BF143025.D
 Acq: 08 Jul 2025 10:54

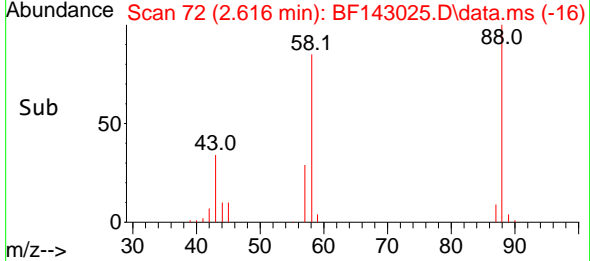
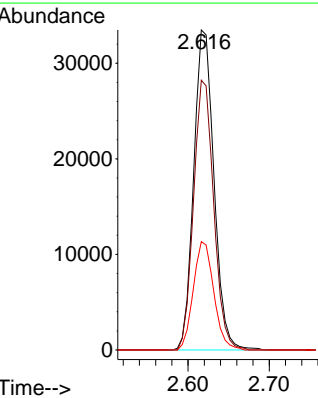
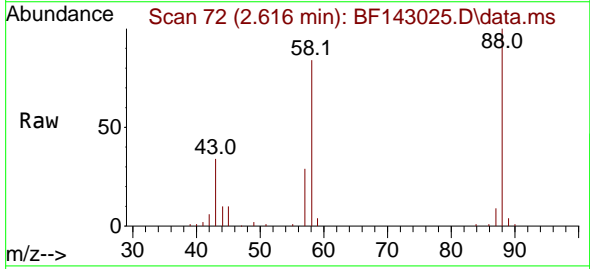
Instrument :
 BNA_F
 ClientSampleId :
 SSTDCCC040

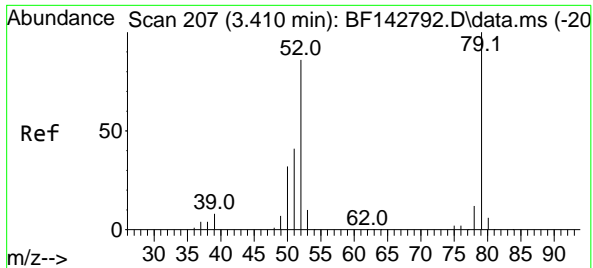
Tgt Ion:152 Resp: 66813
 Ion Ratio Lower Upper
 152 100
 150 160.3 127.2 190.8
 115 59.5 46.6 69.8



#2
 1,4-Dioxane
 Concen: 36.124 ng
 RT: 2.616 min Scan# 72
 Delta R.T. -0.023 min
 Lab File: BF143025.D
 Acq: 08 Jul 2025 10:54

Tgt Ion: 88 Resp: 57982
 Ion Ratio Lower Upper
 88 100
 58 83.7 69.1 103.7
 43 34.2 27.4 41.2



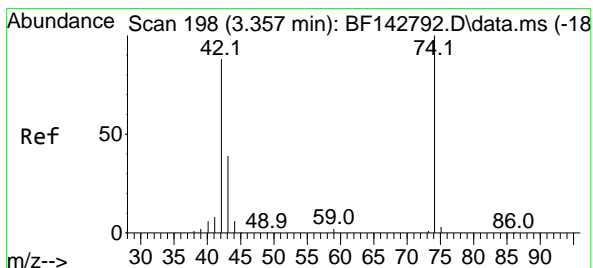
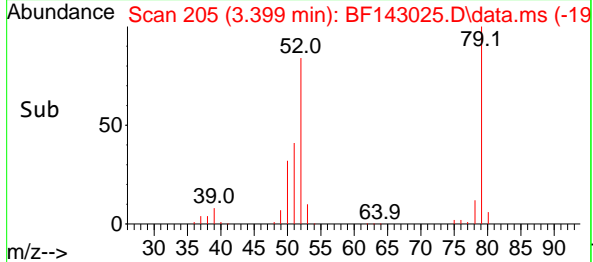
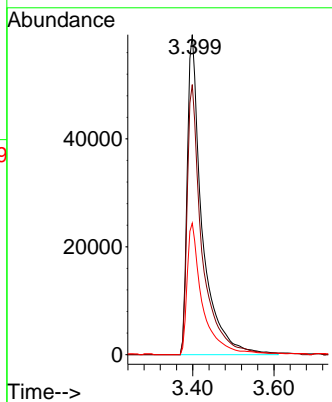
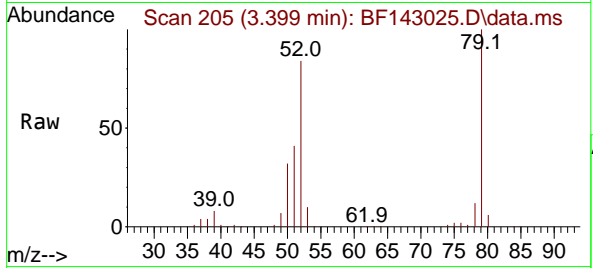


#3
 Pyridine
 Concen: 37.643 ng
 RT: 3.399 min Scan# 20
 Delta R.T. -0.012 min
 Lab File: BF143025.D
 Acq: 08 Jul 2025 10:54

Instrument : BNA_F
 Client Sample Id : SSTDCCC040

Tgt Ion: 79 Resp: 151473

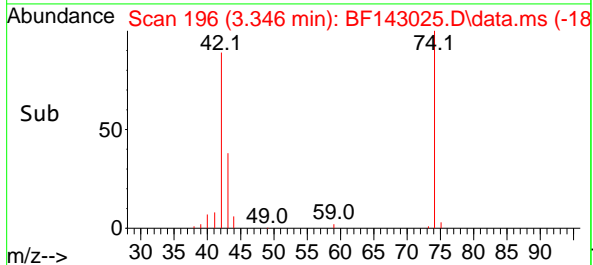
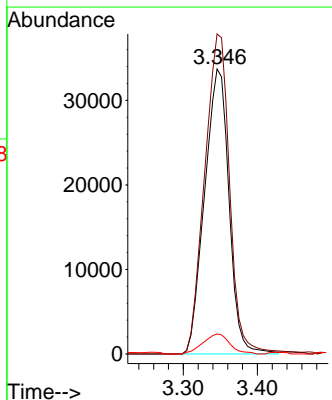
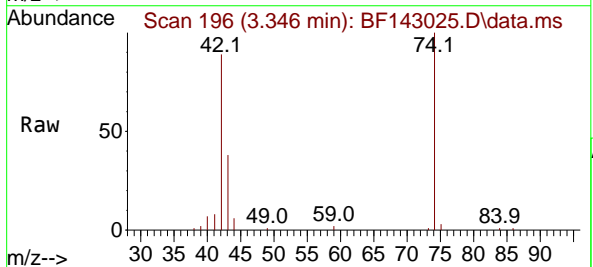
Ion	Ratio	Lower	Upper
79	100		
52	84.4	69.2	103.8
51	41.1	33.2	49.8

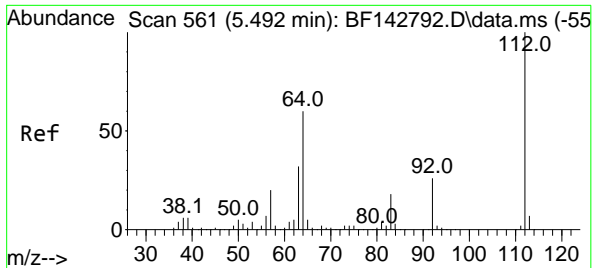


#4
 n-Nitrosodimethylamine
 Concen: 37.086 ng
 RT: 3.346 min Scan# 196
 Delta R.T. -0.012 min
 Lab File: BF143025.D
 Acq: 08 Jul 2025 10:54

Tgt Ion: 42 Resp: 77170

Ion	Ratio	Lower	Upper
42	100		
74	112.3	90.9	136.3
44	7.0	5.8	8.6

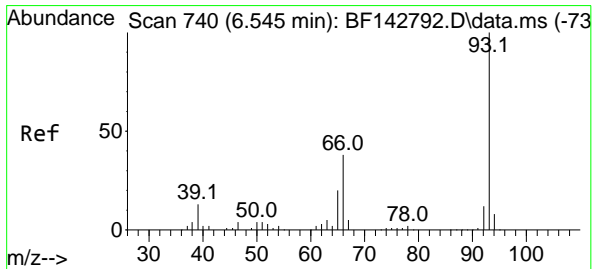
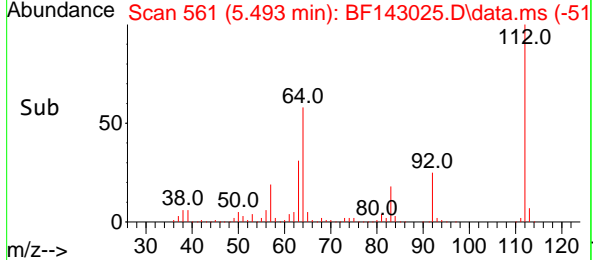
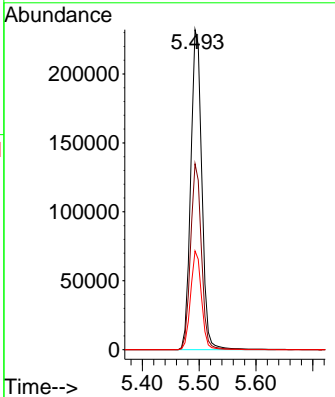
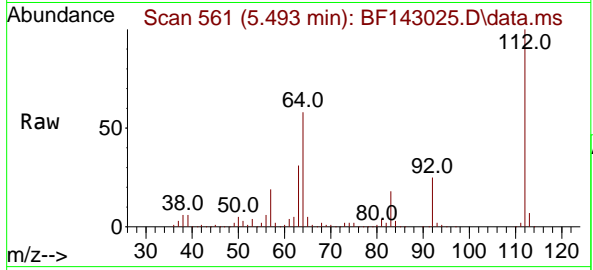




#5
 2-Fluorophenol
 Concen: 78.806 ng
 RT: 5.493 min Scan# 501
 Delta R.T. 0.001 min
 Lab File: BF143025.D
 Acq: 08 Jul 2025 10:54

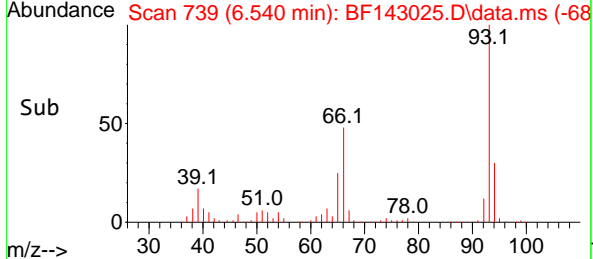
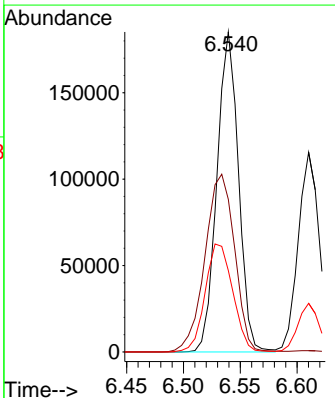
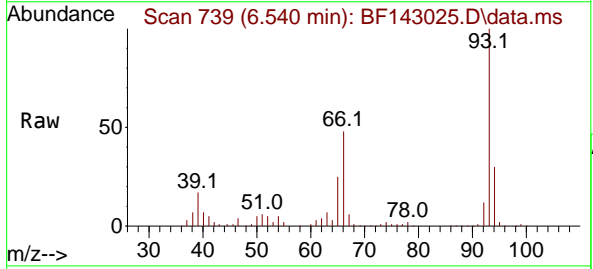
Instrument : BNA_F
 ClientSampleId : SSTDCCC040

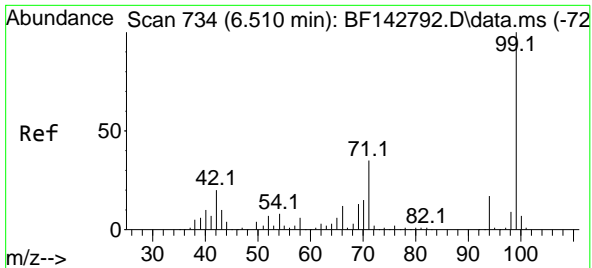
Tgt Ion	Resp	Lower	Upper
112	100		
64	58.1	48.2	72.2
63	30.8	25.7	38.5



#6
 Aniline
 Concen: 38.839 ng
 RT: 6.540 min Scan# 739
 Delta R.T. -0.006 min
 Lab File: BF143025.D
 Acq: 08 Jul 2025 10:54

Tgt Ion	Resp	Lower	Upper
93	100		
66	47.7	31.8	47.6#
65	25.4	16.2	24.2#



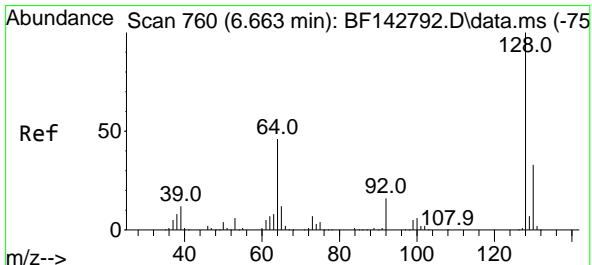
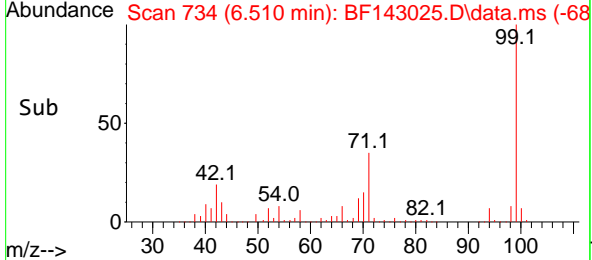
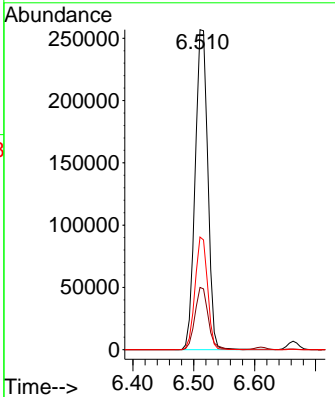
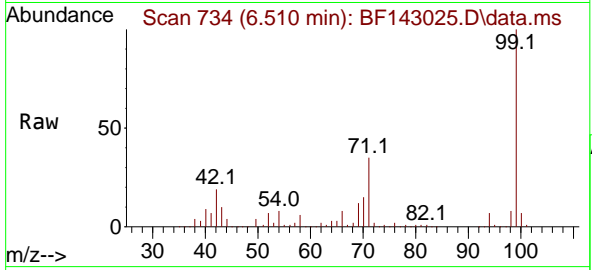


#7
 Phenol-d6
 Concen: 78.144 ng
 RT: 6.510 min Scan# 71
 Delta R.T. 0.000 min
 Lab File: BF143025.D
 Acq: 08 Jul 2025 10:54

Instrument : BNA_F
 ClientSampleId : SSTDCCC040

Tgt Ion: 99 Resp: 369973

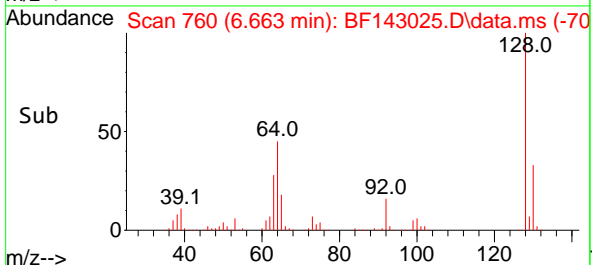
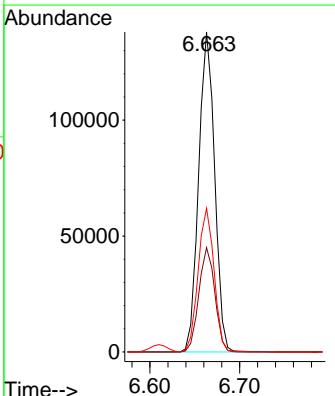
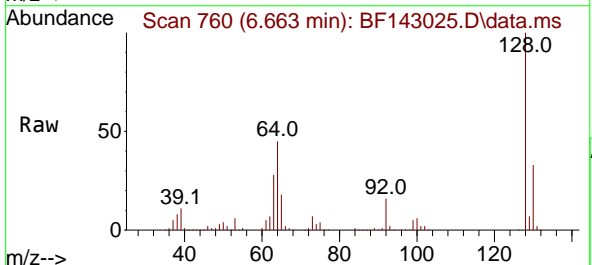
Ion	Ratio	Lower	Upper
99	100		
42	19.4	15.9	23.9
71	35.2	27.8	41.8

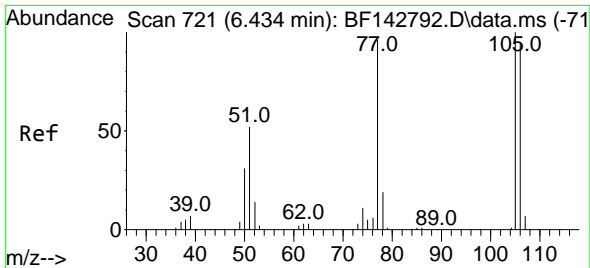


#8
 2-Chlorophenol
 Concen: 39.386 ng
 RT: 6.663 min Scan# 760
 Delta R.T. 0.000 min
 Lab File: BF143025.D
 Acq: 08 Jul 2025 10:54

Tgt Ion: 128 Resp: 170496

Ion	Ratio	Lower	Upper
128	100		
130	32.6	12.7	52.7
64	44.9	26.5	66.5

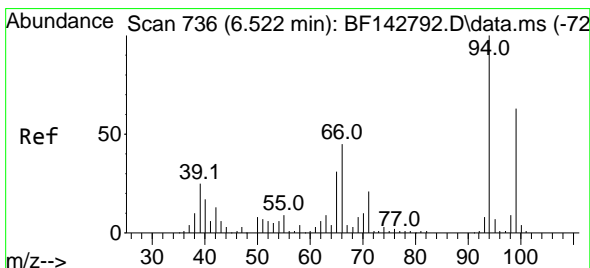
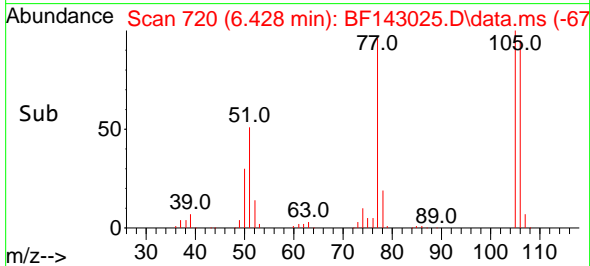
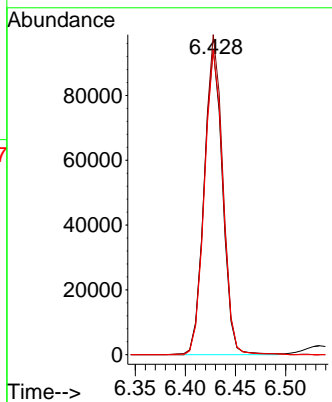
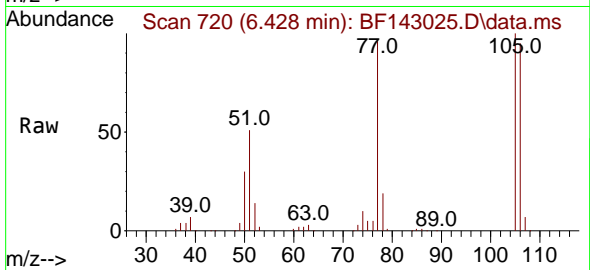




#9
Benzaldehyde
Concen: 42.967 ng
RT: 6.428 min Scan# 71
Delta R.T. -0.006 min
Lab File: BF143025.D
Acq: 08 Jul 2025 10:54

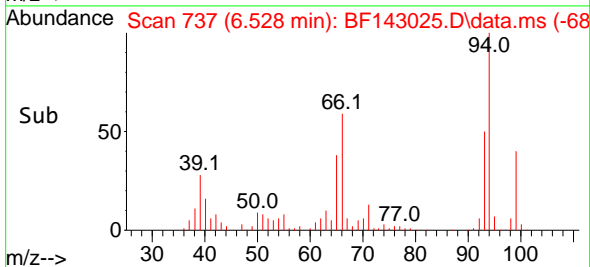
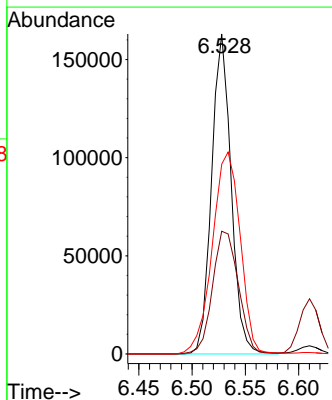
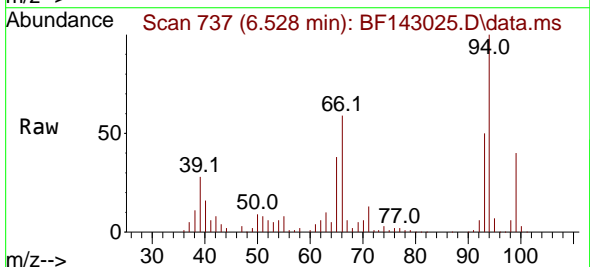
Instrument : BNA_F
ClientSampleId : SSTDCCC040

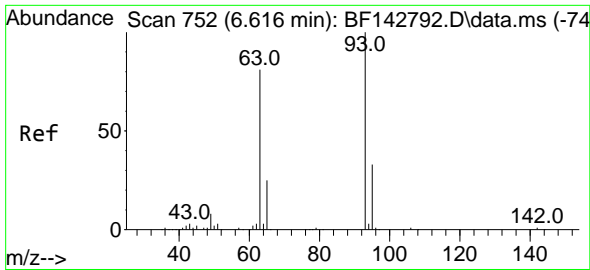
Tgt Ion: 77 Resp: 120691
Ion Ratio Lower Upper
77 100
105 104.7 83.8 123.8
106 99.7 78.7 118.7



#10
Phenol
Concen: 39.348 ng
RT: 6.528 min Scan# 737
Delta R.T. 0.006 min
Lab File: BF143025.D
Acq: 08 Jul 2025 10:54

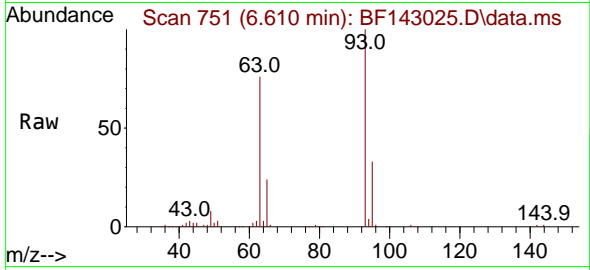
Tgt Ion: 94 Resp: 207080
Ion Ratio Lower Upper
94 100
65 38.3 11.3 51.3
66 59.3 24.9 64.9



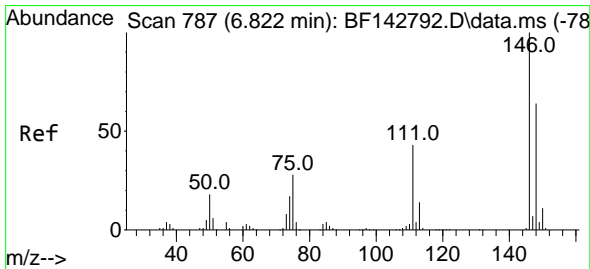
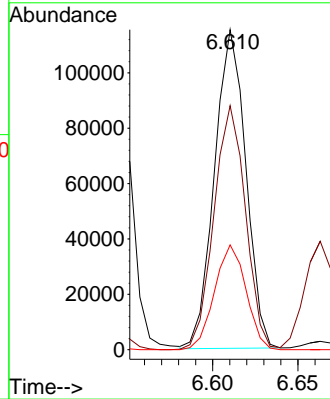
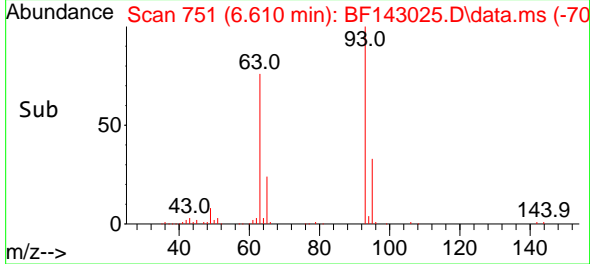


#11
 bis(2-Chloroethyl)ether
 Concen: 39.146 ng
 RT: 6.610 min Scan# 711
 Delta R.T. -0.006 min
 Lab File: BF143025.D
 Acq: 08 Jul 2025 10:54

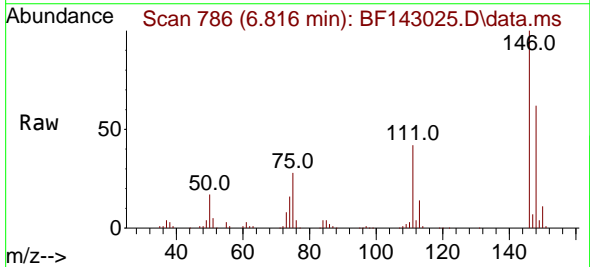
Instrument : BNA_F
 ClientSampleId : SSTDCCC040



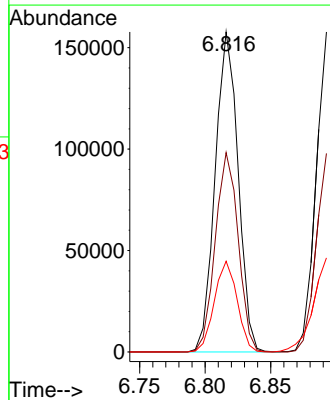
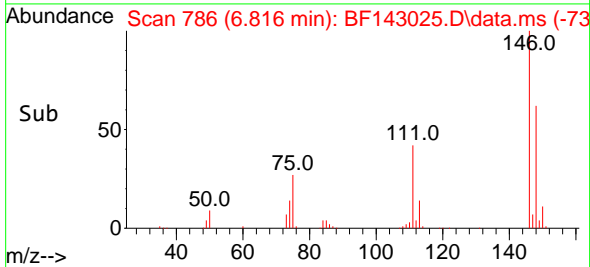
Tgt Ion: 93 Resp: 147243
 Ion Ratio Lower Upper
 93 100
 63 76.3 60.3 100.3
 95 32.7 12.5 52.5

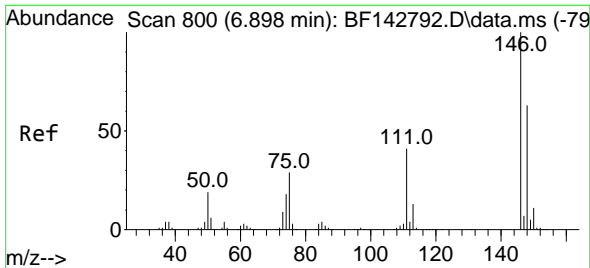


#12
 1,3-Dichlorobenzene
 Concen: 39.558 ng
 RT: 6.816 min Scan# 786
 Delta R.T. -0.006 min
 Lab File: BF143025.D
 Acq: 08 Jul 2025 10:54



Tgt Ion: 146 Resp: 191514
 Ion Ratio Lower Upper
 146 100
 148 62.3 51.1 76.7
 75 28.3 22.7 34.1

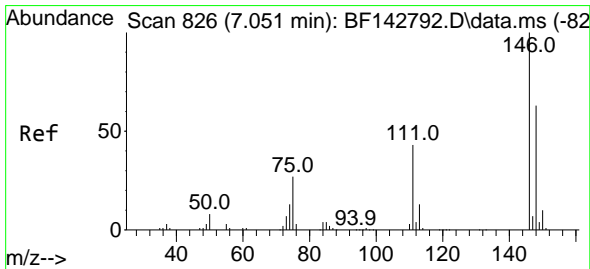
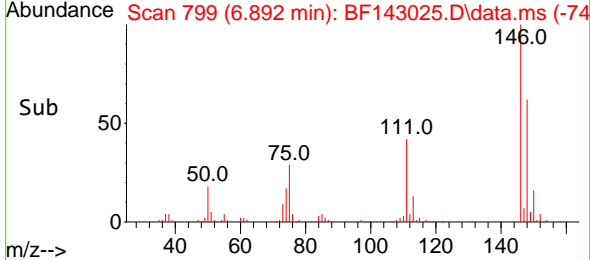
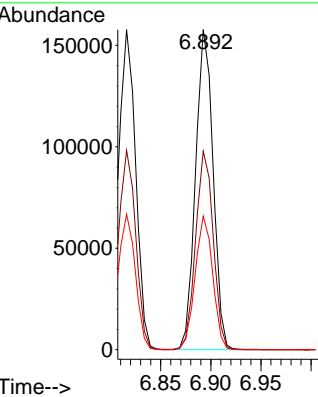
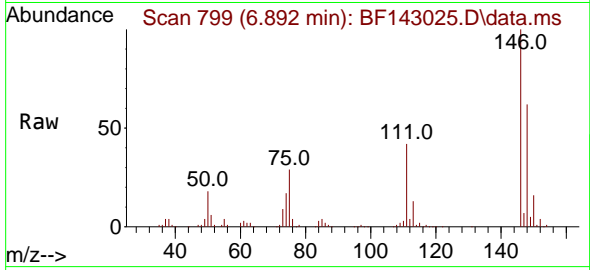




#13
 1,4-Dichlorobenzene
 Concen: 39.445 ng
 RT: 6.892 min Scan# 74
 Delta R.T. -0.006 min
 Lab File: BF143025.D
 Acq: 08 Jul 2025 10:54

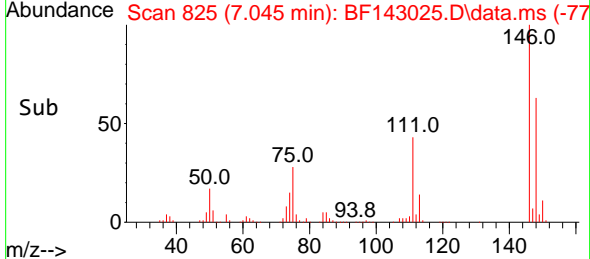
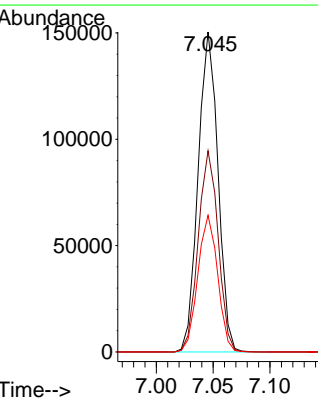
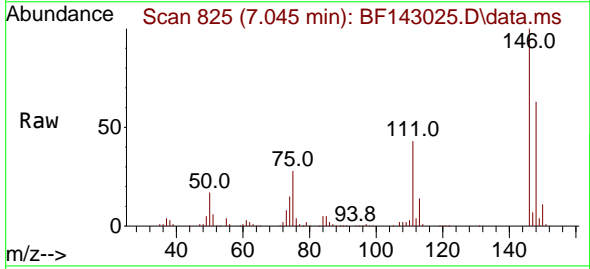
Instrument :
 BNA_F
 ClientSampleId :
 SSTDCCC040

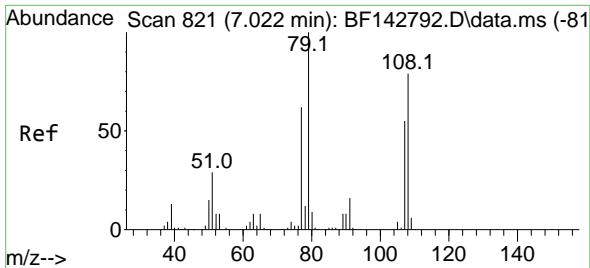
Tgt Ion:146 Resp: 192667
 Ion Ratio Lower Upper
 146 100
 148 62.1 50.2 75.2
 111 41.7 33.2 49.8



#14
 1,2-Dichlorobenzene
 Concen: 39.496 ng
 RT: 7.045 min Scan# 825
 Delta R.T. -0.006 min
 Lab File: BF143025.D
 Acq: 08 Jul 2025 10:54

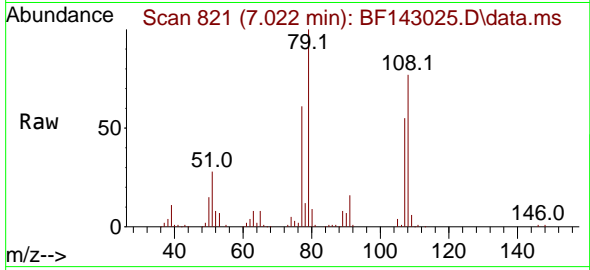
Tgt Ion:146 Resp: 182982
 Ion Ratio Lower Upper
 146 100
 148 62.9 50.4 75.6
 111 42.7 34.1 51.1



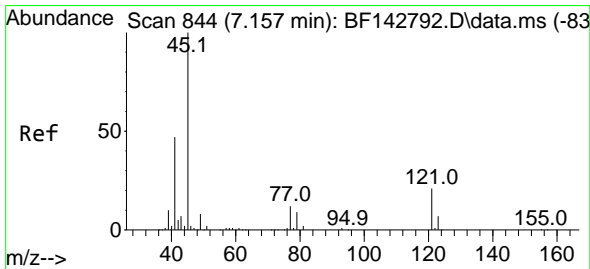
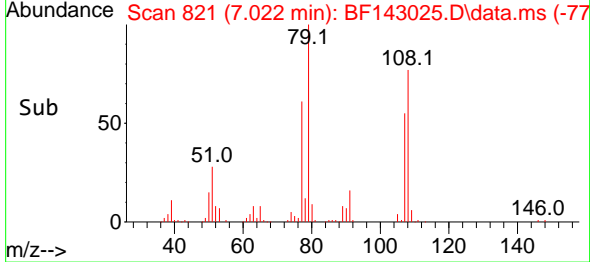
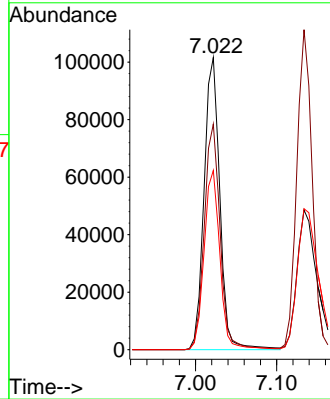


#15
 Benzyl Alcohol
 Concen: 40.010 ng
 RT: 7.022 min Scan# 81
 Delta R.T. 0.000 min
 Lab File: BF143025.D
 Acq: 08 Jul 2025 10:54

Instrument :
 BNA_F
 ClientSampleId :
 SSTDCCC040

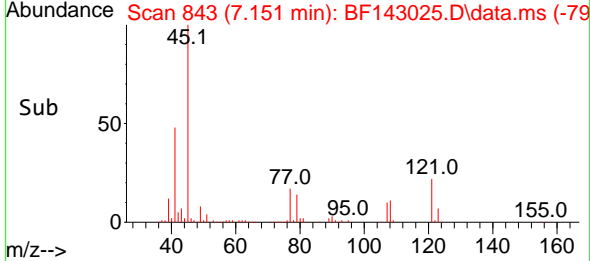
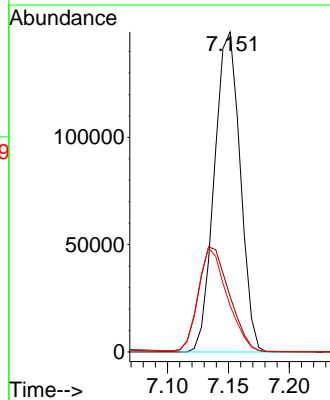
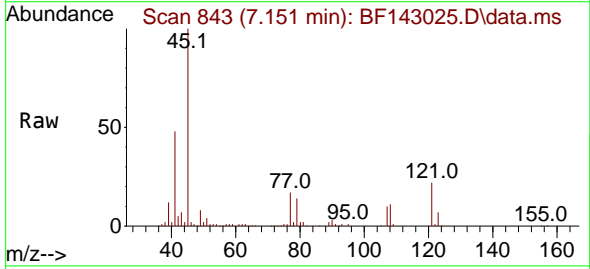


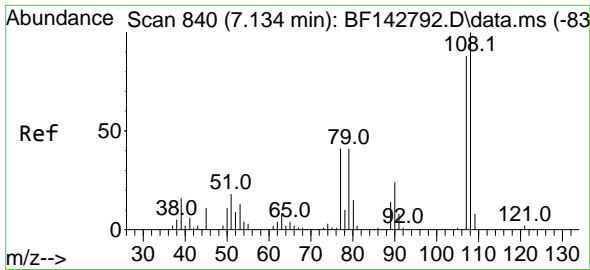
Tgt Ion: 79 Resp: 136943
 Ion Ratio Lower Upper
 79 100
 108 77.2 63.4 95.0
 77 61.4 49.5 74.3



#16
 2,2'-oxybis(1-Chloropropane)
 Concen: 36.380 ng
 RT: 7.151 min Scan# 843
 Delta R.T. -0.006 min
 Lab File: BF143025.D
 Acq: 08 Jul 2025 10:54

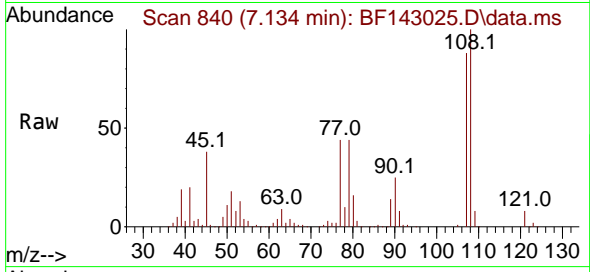
Tgt Ion: 45 Resp: 219851
 Ion Ratio Lower Upper
 45 100
 77 17.3 0.0 32.8
 79 14.5 0.0 29.8



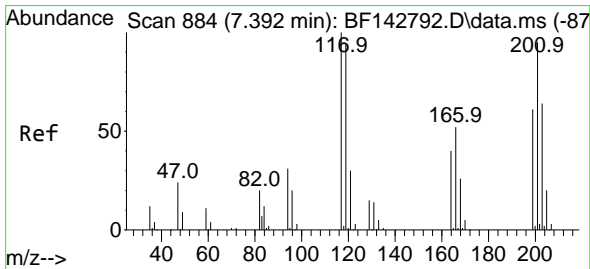
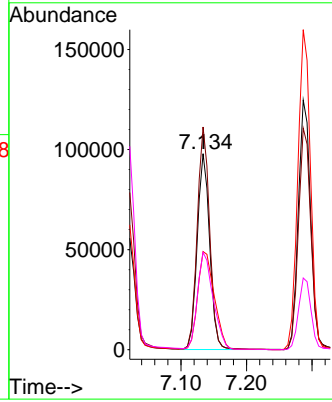
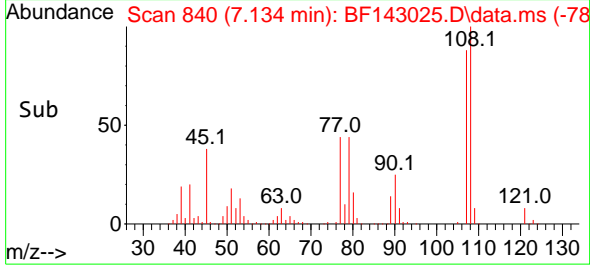


#17
 2-Methylphenol
 Concen: 39.617 ng
 RT: 7.134 min Scan# 84
 Delta R.T. 0.000 min
 Lab File: BF143025.D
 Acq: 08 Jul 2025 10:54

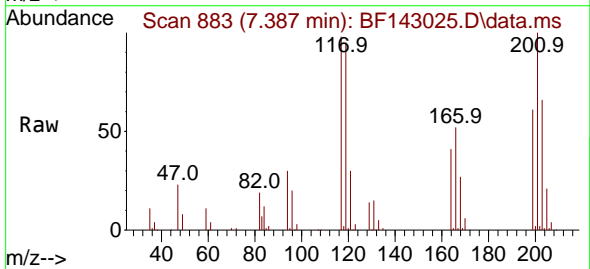
Instrument :
 BNA_F
 ClientSampleId :
 SSTDCCC040



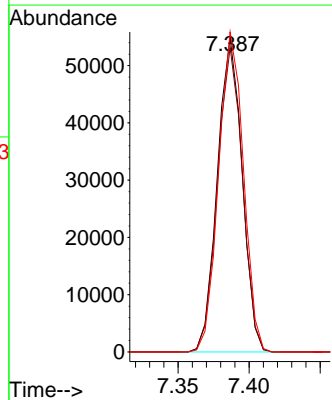
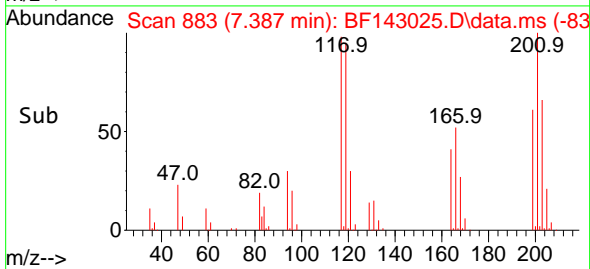
Tgt Ion:107 Resp: 129961
 Ion Ratio Lower Upper
 107 100
 108 113.6 90.9 136.3
 77 50.1 37.3 55.9
 79 49.6 37.2 55.8

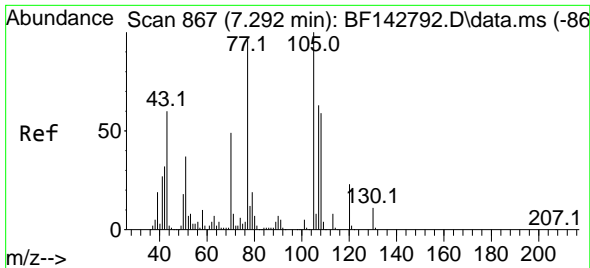


#18
 Hexachloroethane
 Concen: 38.946 ng
 RT: 7.387 min Scan# 883
 Delta R.T. -0.006 min
 Lab File: BF143025.D
 Acq: 08 Jul 2025 10:54



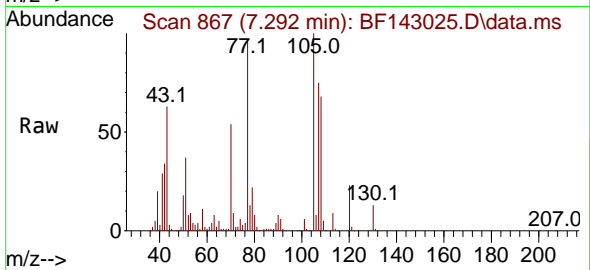
Tgt Ion:117 Resp: 66538
 Ion Ratio Lower Upper
 117 100
 119 96.7 75.4 113.0
 201 101.7 75.9 113.9



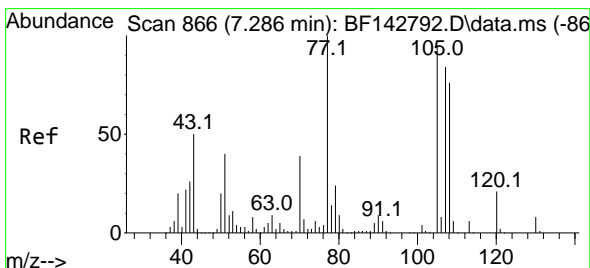
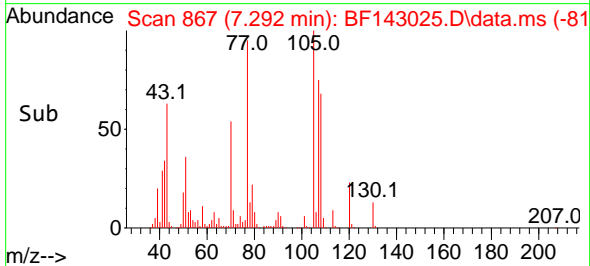
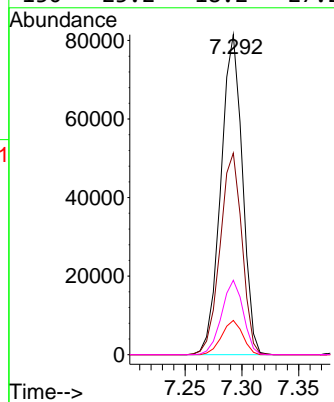


#19
 n-Nitroso-di-n-propylamine
 Concen: 39.059 ng
 RT: 7.292 min Scan# 80
 Delta R.T. 0.000 min
 Lab File: BF143025.D
 Acq: 08 Jul 2025 10:54

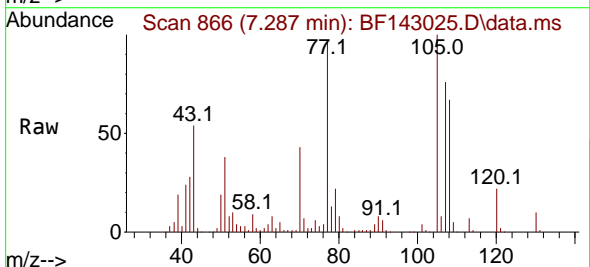
Instrument :
 BNA_F
 ClientSampleId :
 SSTDCCC040



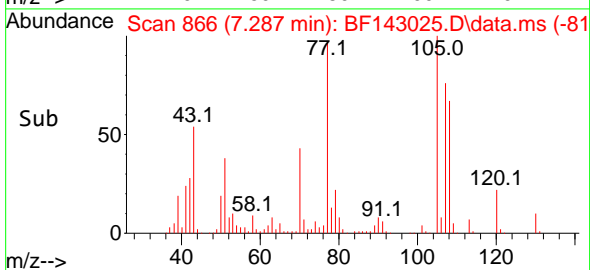
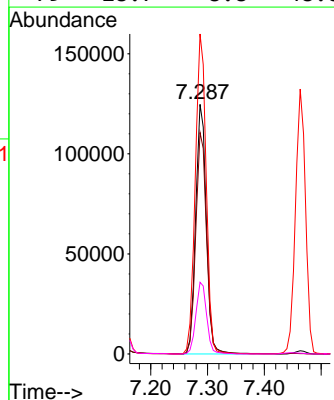
Tgt Ion: 70 Resp: 107553
 Ion Ratio Lower Upper
 70 100
 42 63.0 52.1 78.1
 101 10.7 8.2 12.2
 130 23.2 18.2 27.2

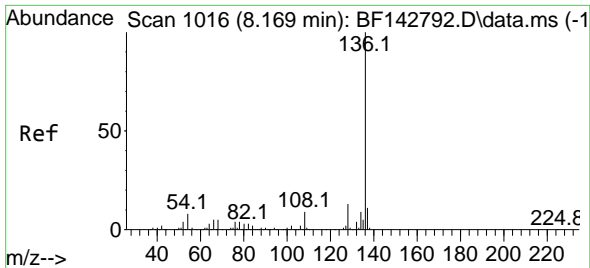


#20
 3+4-Methylphenols
 Concen: 40.025 ng
 RT: 7.287 min Scan# 866
 Delta R.T. 0.000 min
 Lab File: BF143025.D
 Acq: 08 Jul 2025 10:54



Tgt Ion: 107 Resp: 163708
 Ion Ratio Lower Upper
 107 100
 108 88.7 70.0 110.0
 77 128.2 98.5 138.5
 79 28.7 8.8 48.8



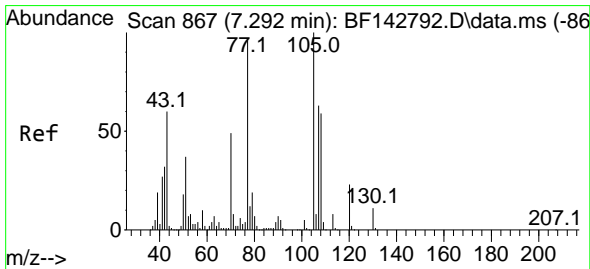
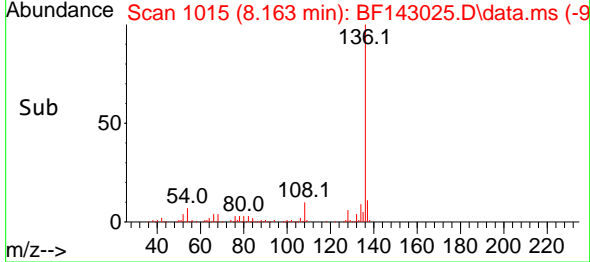
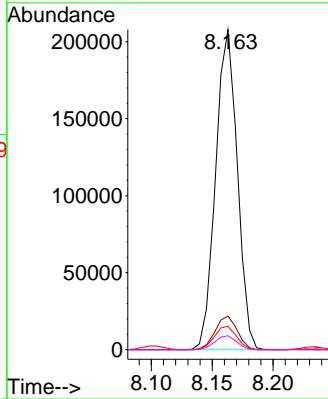
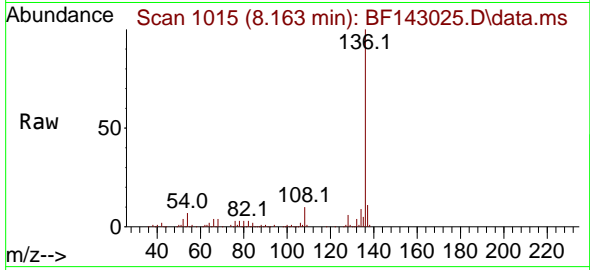


#21
 Naphthalene-d8
 Concen: 20.000 ng
 RT: 8.163 min Scan# 1015
 Delta R.T. -0.006 min
 Lab File: BF143025.D
 Acq: 08 Jul 2025 10:54

Instrument : BNA_F
 ClientSampleId : SSTDCCC040

Tgt Ion:136 Resp: 257725

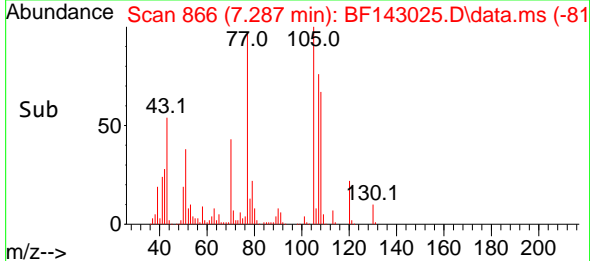
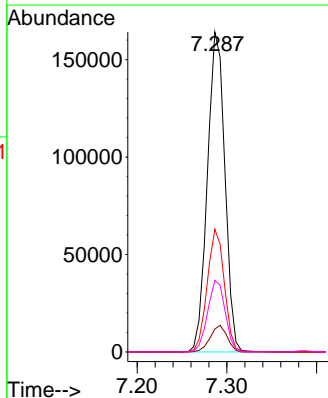
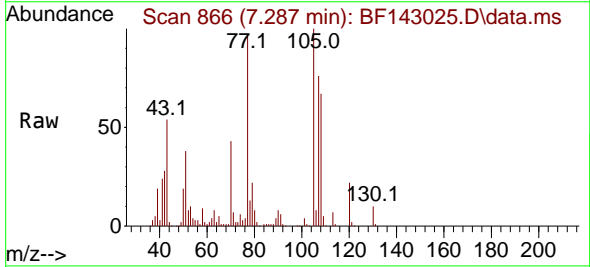
Ion	Ratio	Lower	Upper
136	100		
137	10.5	8.4	12.6
54	7.3	6.3	9.5
68	4.3	3.7	5.5

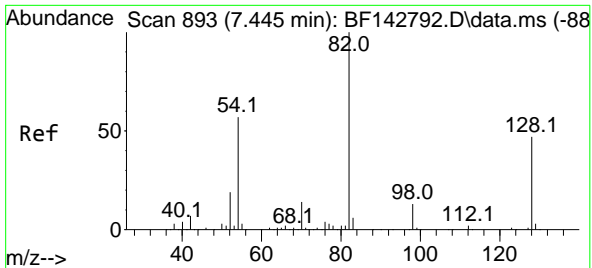


#22
 Acetophenone
 Concen: 39.098 ng
 RT: 7.287 min Scan# 866
 Delta R.T. -0.006 min
 Lab File: BF143025.D
 Acq: 08 Jul 2025 10:54

Tgt Ion:105 Resp: 222206

Ion	Ratio	Lower	Upper
105	100		
71	7.2	6.5	9.7
51	38.3	29.8	44.8
120	22.3	18.2	27.2



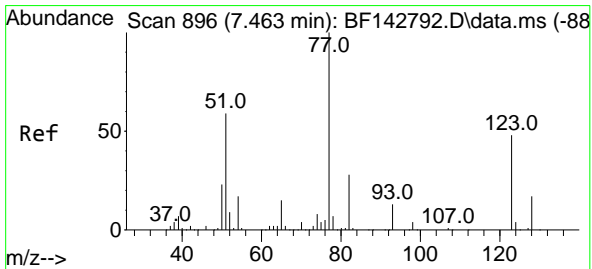
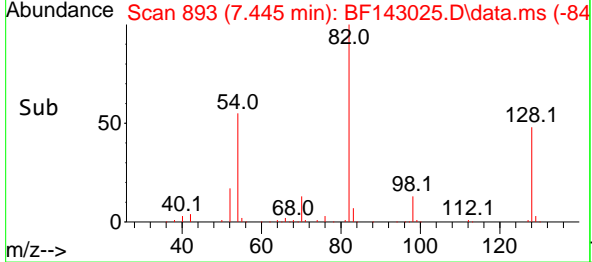
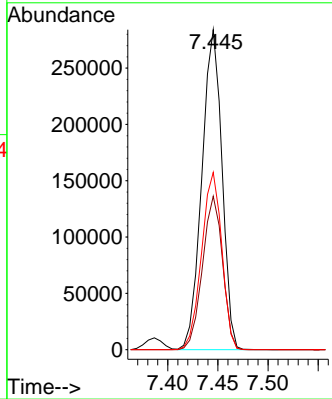
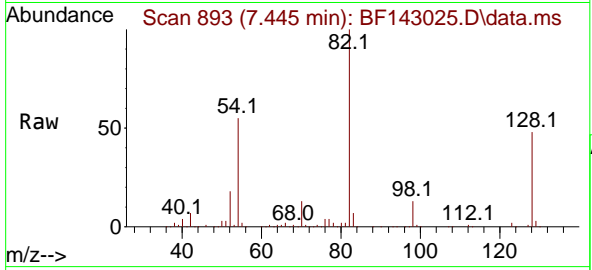


#23
 Nitrobenzene-d5
 Concen: 84.546 ng
 RT: 7.445 min Scan# 893
 Delta R.T. 0.000 min
 Lab File: BF143025.D
 Acq: 08 Jul 2025 10:54

Instrument : BNA_F
 ClientSampleId : SSTDCCC040

Tgt Ion: 82 Resp: 397254

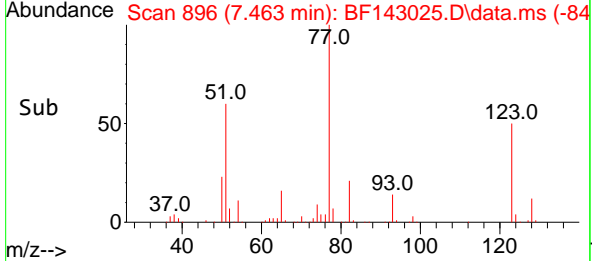
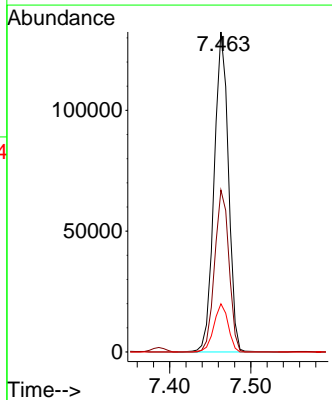
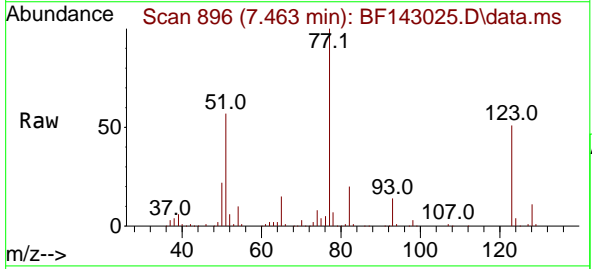
Ion	Ratio	Lower	Upper
82	100		
128	48.0	37.7	56.5
54	55.4	45.7	68.5

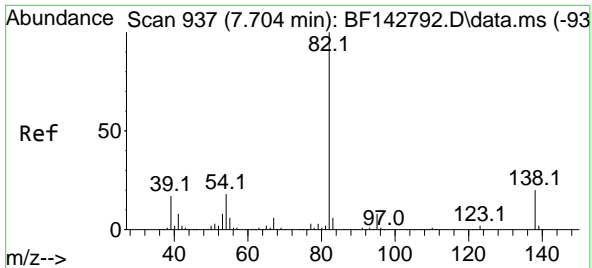


#24
 Nitrobenzene
 Concen: 38.199 ng
 RT: 7.463 min Scan# 896
 Delta R.T. 0.000 min
 Lab File: BF143025.D
 Acq: 08 Jul 2025 10:54

Tgt Ion: 77 Resp: 162450

Ion	Ratio	Lower	Upper
77	100		
123	50.6	39.2	58.8
65	15.0	11.6	17.4

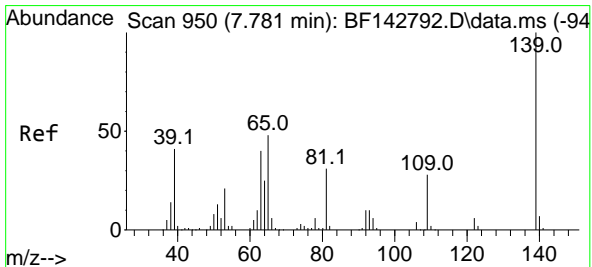
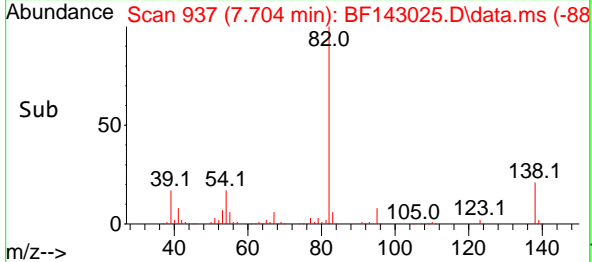
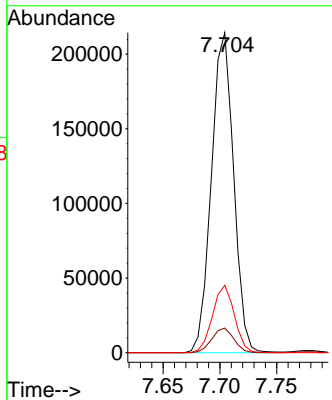
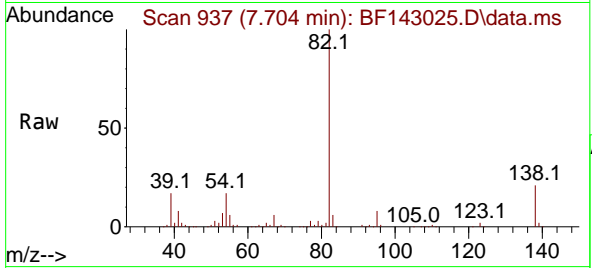




#25
 Isophorone
 Concen: 38.737 ng
 RT: 7.704 min Scan# 91
 Delta R.T. 0.000 min
 Lab File: BF143025.D
 Acq: 08 Jul 2025 10:54

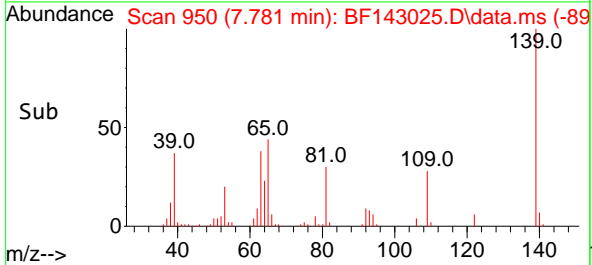
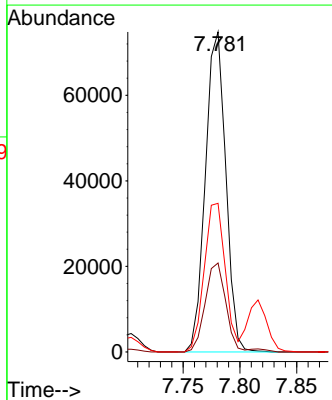
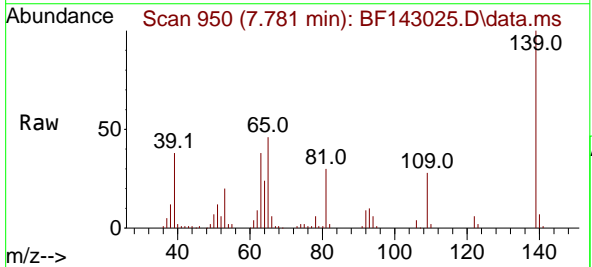
Instrument :
 BNA_F
 ClientSampleId :
 SSTDCCC040

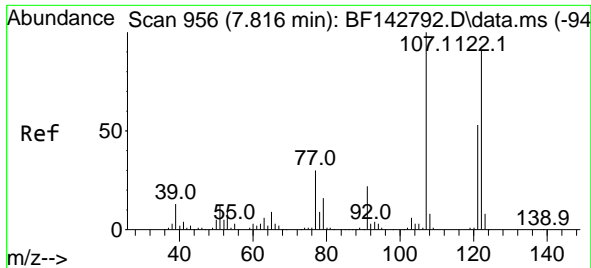
Tgt Ion: 82 Resp: 291979
 Ion Ratio Lower Upper
 82 100
 95 7.7 6.2 9.2
 138 21.0 16.2 24.4



#26
 2-Nitrophenol
 Concen: 40.333 ng
 RT: 7.781 min Scan# 950
 Delta R.T. 0.000 min
 Lab File: BF143025.D
 Acq: 08 Jul 2025 10:54

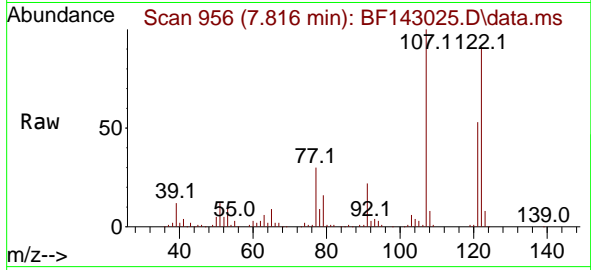
Tgt Ion:139 Resp: 93437
 Ion Ratio Lower Upper
 139 100
 109 27.8 22.7 34.1
 65 46.4 38.6 58.0



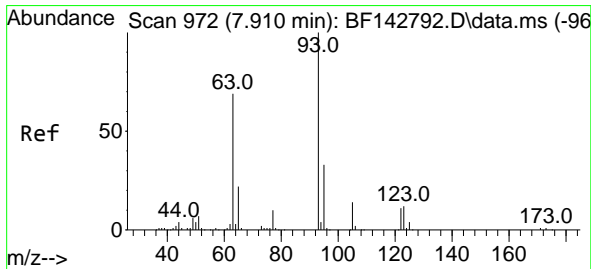
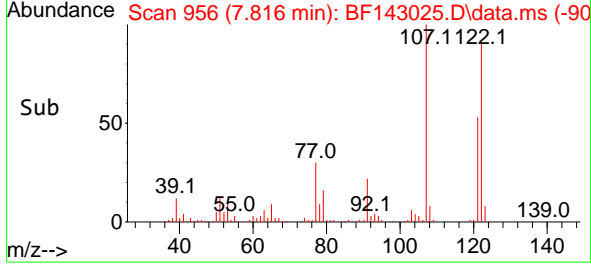
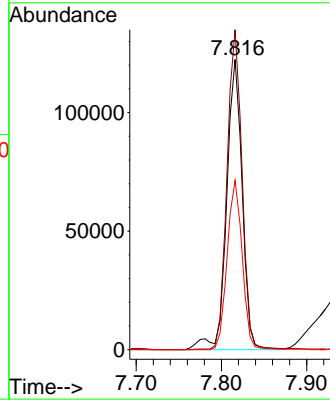


#27
 2,4-Dimethylphenol
 Concen: 38.666 ng
 RT: 7.816 min Scan# 91
 Delta R.T. 0.000 min
 Lab File: BF143025.D
 Acq: 08 Jul 2025 10:54

Instrument :
 BNA_F
 ClientSampleId :
 SSTDCCC040

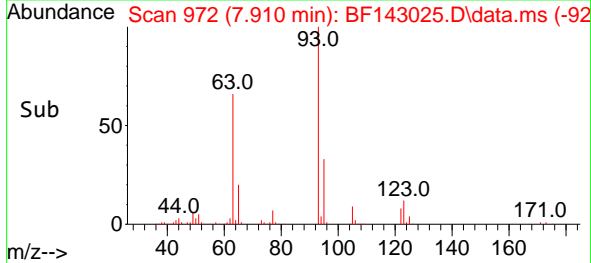
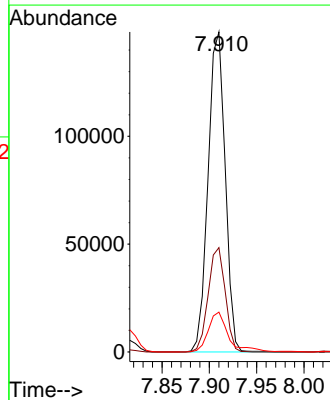
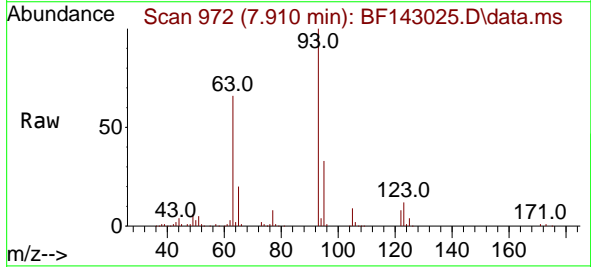


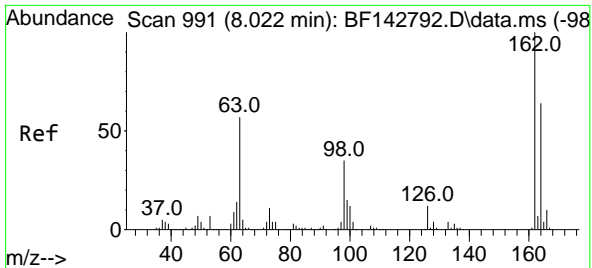
Tgt Ion:122 Resp: 155161
 Ion Ratio Lower Upper
 122 100
 107 110.3 88.0 132.0
 121 58.3 46.3 69.5



#28
 bis(2-Chloroethoxy)methane
 Concen: 38.878 ng
 RT: 7.910 min Scan# 972
 Delta R.T. 0.000 min
 Lab File: BF143025.D
 Acq: 08 Jul 2025 10:54

Tgt Ion: 93 Resp: 186301
 Ion Ratio Lower Upper
 93 100
 95 32.6 26.2 39.2
 123 12.4 9.9 14.9



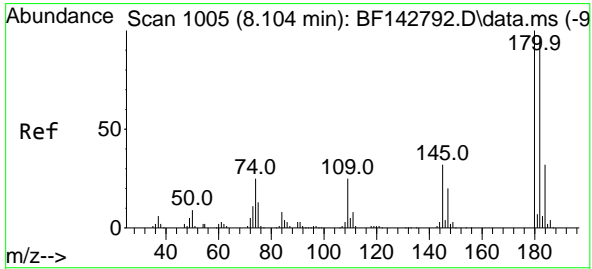
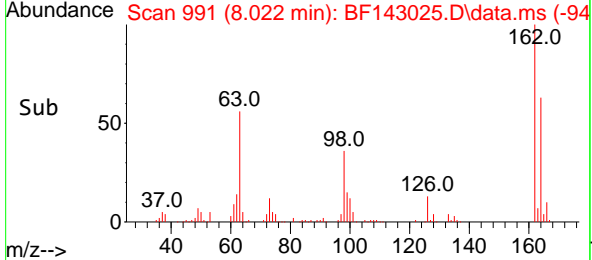
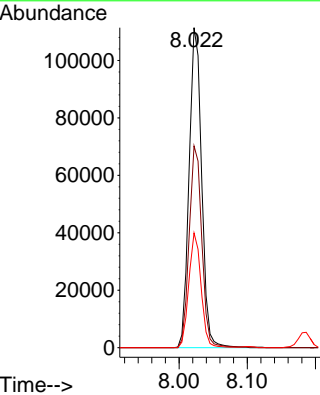
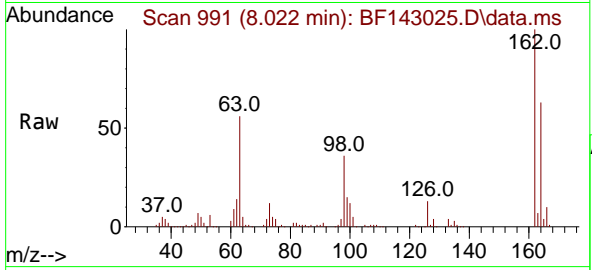


#29
 2,4-Dichlorophenol
 Concen: 38.983 ng
 RT: 8.022 min Scan# 991
 Delta R.T. 0.000 min
 Lab File: BF143025.D
 Acq: 08 Jul 2025 10:54

Instrument : BNA_F
 ClientSampleId : SSTDCCC040

Tgt Ion:162 Resp: 141839

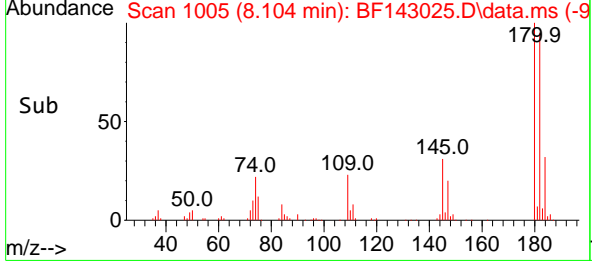
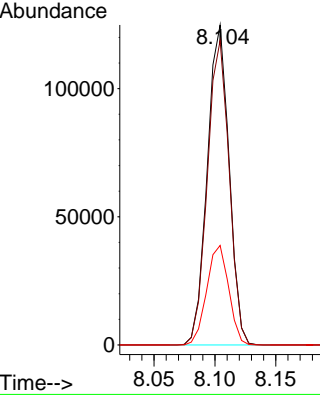
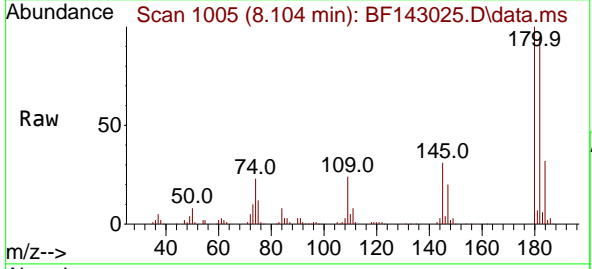
Ion	Ratio	Lower	Upper
162	100		
164	63.1	44.0	84.0
98	35.9	15.4	55.4

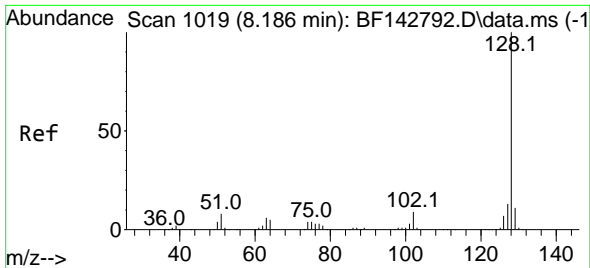


#30
 1,2,4-Trichlorobenzene
 Concen: 38.835 ng
 RT: 8.104 min Scan# 1005
 Delta R.T. 0.000 min
 Lab File: BF143025.D
 Acq: 08 Jul 2025 10:54

Tgt Ion:180 Resp: 155378

Ion	Ratio	Lower	Upper
180	100		
182	95.2	76.4	114.6
145	31.1	25.8	38.8

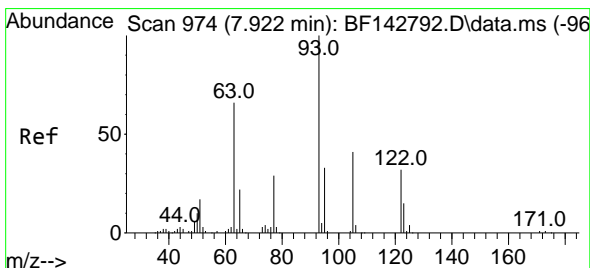
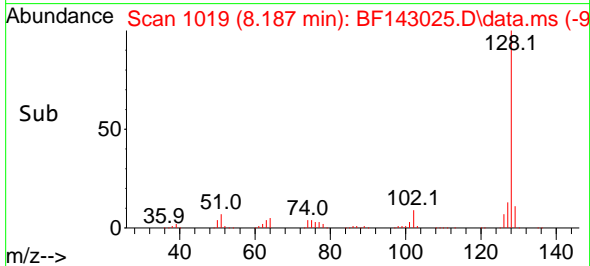
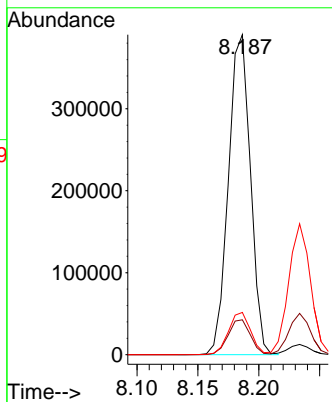
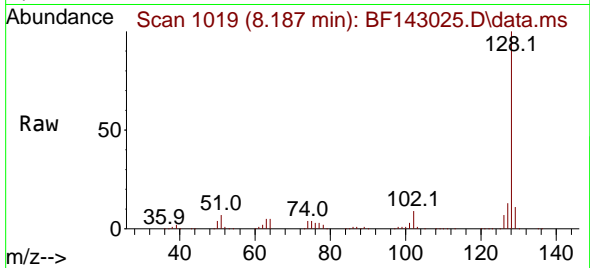




#31
 Naphthalene
 Concen: 38.890 ng
 RT: 8.187 min Scan# 1019
 Delta R.T. 0.000 min
 Lab File: BF143025.D
 Acq: 08 Jul 2025 10:54

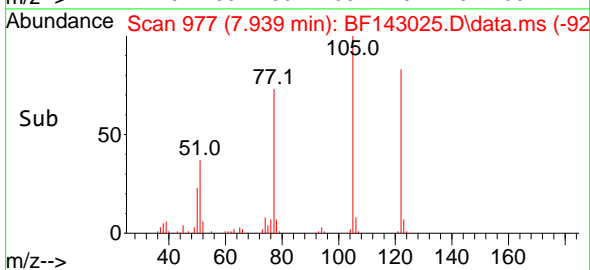
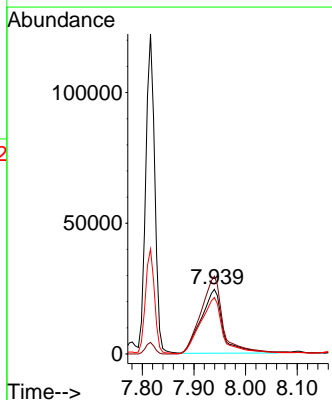
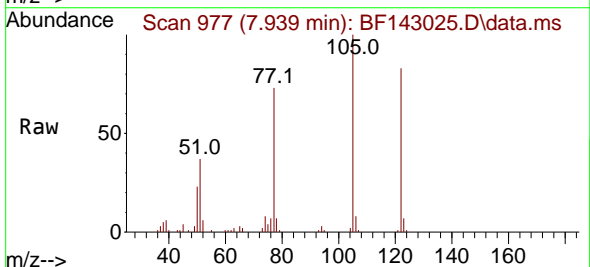
Instrument :
 BNA_F
 ClientSampleId :
 SSTDCCC040

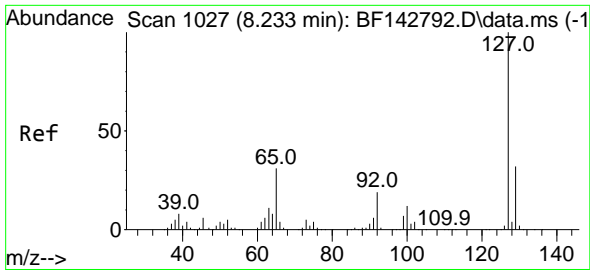
Tgt Ion:128 Resp: 490610
 Ion Ratio Lower Upper
 128 100
 129 10.9 8.9 13.3
 127 13.2 10.4 15.6



#32
 Benzoic acid
 Concen: 35.279 ng
 RT: 7.939 min Scan# 977
 Delta R.T. 0.018 min
 Lab File: BF143025.D
 Acq: 08 Jul 2025 10:54

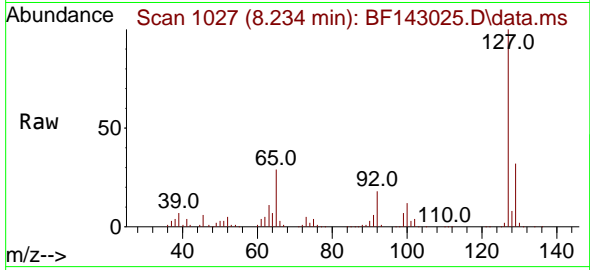
Tgt Ion:122 Resp: 72155
 Ion Ratio Lower Upper
 122 100
 105 120.3 104.7 144.7
 77 87.4 70.2 110.2



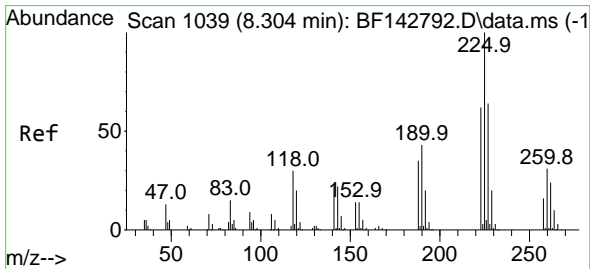
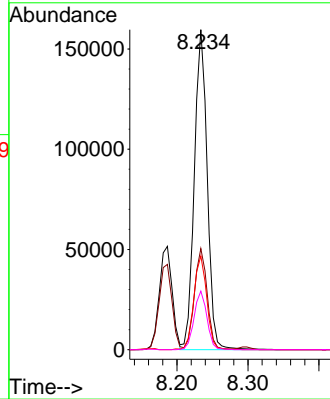
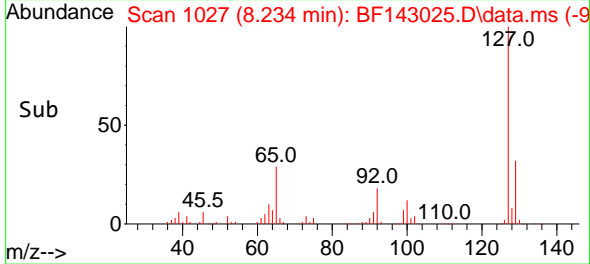


#33
 4-Chloroaniline
 Concen: 39.314 ng
 RT: 8.234 min Scan# 1027
 Delta R.T. 0.000 min
 Lab File: BF143025.D
 Acq: 08 Jul 2025 10:54

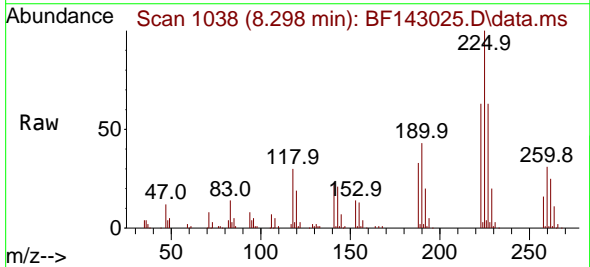
Instrument :
 BNA_F
 ClientSampleId :
 SSTDCCC040



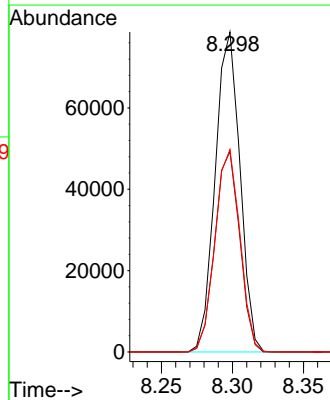
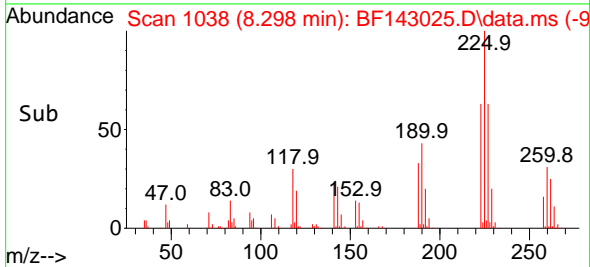
Tgt Ion:127 Resp: 201664
 Ion Ratio Lower Upper
 127 100
 129 31.6 25.9 38.9
 65 29.3 24.6 36.8
 92 18.3 15.4 23.0

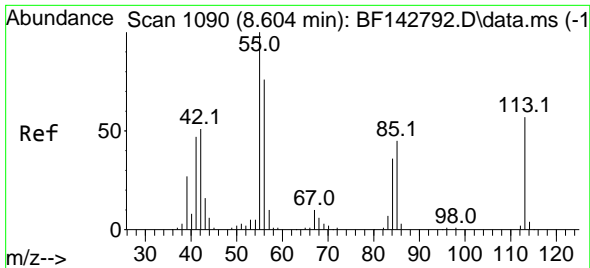


#34
 Hexachlorobutadiene
 Concen: 39.023 ng
 RT: 8.298 min Scan# 1038
 Delta R.T. -0.006 min
 Lab File: BF143025.D
 Acq: 08 Jul 2025 10:54



Tgt Ion:225 Resp: 95500
 Ion Ratio Lower Upper
 225 100
 223 62.6 49.9 74.9
 227 63.3 51.4 77.0

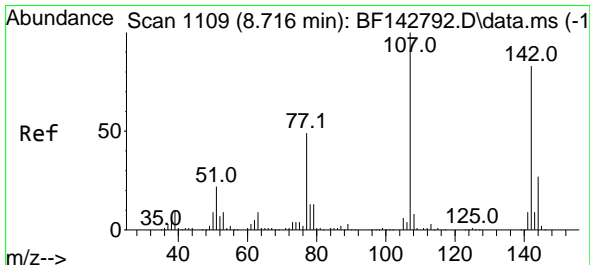
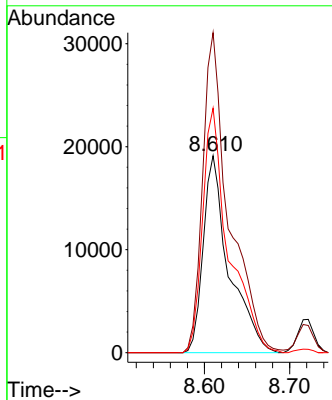
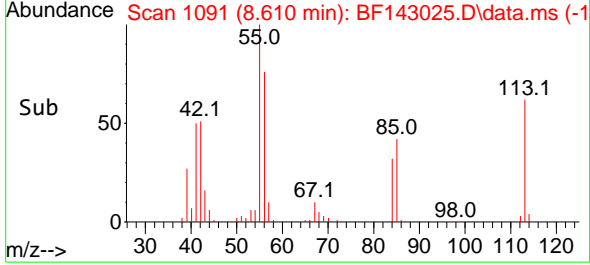
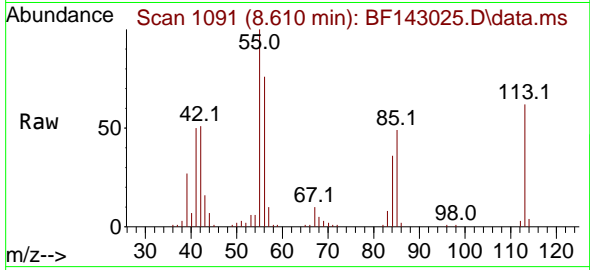




#35
 Caprolactam
 Concen: 41.901 ng
 RT: 8.610 min Scan# 1091
 Delta R.T. 0.006 min
 Lab File: BF143025.D
 Acq: 08 Jul 2025 10:54

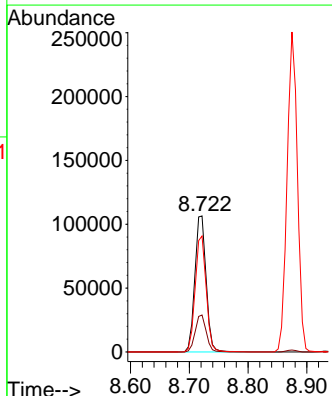
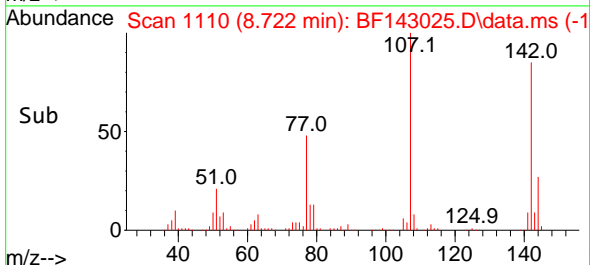
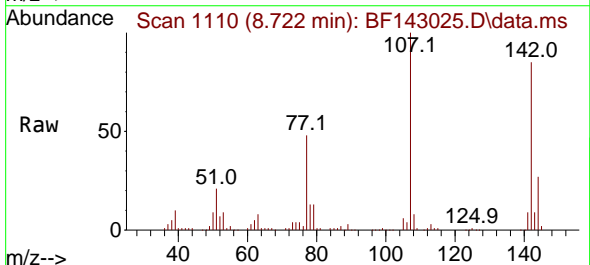
Instrument : BNA_F
 ClientSampleId : SSTDCCC040

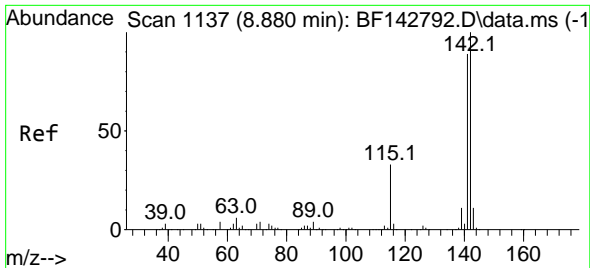
Tgt Ion:113 Resp: 40230
 Ion Ratio Lower Upper
 113 100
 55 162.4 154.4 194.4
 56 124.1 112.1 152.1



#36
 4-Chloro-3-methylphenol
 Concen: 39.303 ng
 RT: 8.722 min Scan# 1110
 Delta R.T. 0.006 min
 Lab File: BF143025.D
 Acq: 08 Jul 2025 10:54

Tgt Ion:107 Resp: 142124
 Ion Ratio Lower Upper
 107 100
 144 27.2 21.3 31.9
 142 85.2 66.6 100.0

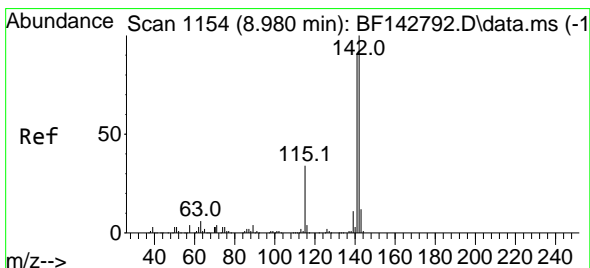
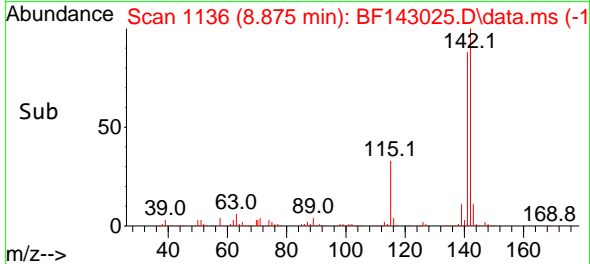
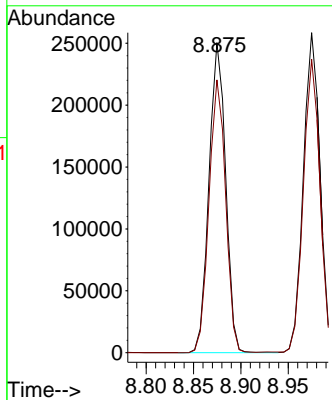
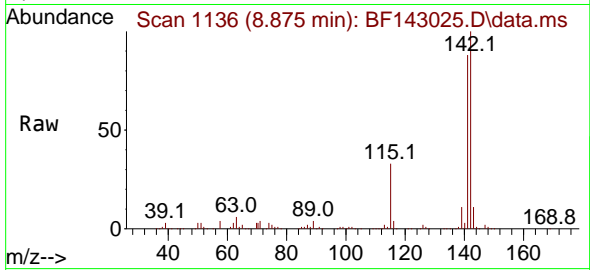




#37
 2-Methylnaphthalene
 Concen: 39.127 ng
 RT: 8.875 min Scan# 1113
 Delta R.T. -0.006 min
 Lab File: BF143025.D
 Acq: 08 Jul 2025 10:54

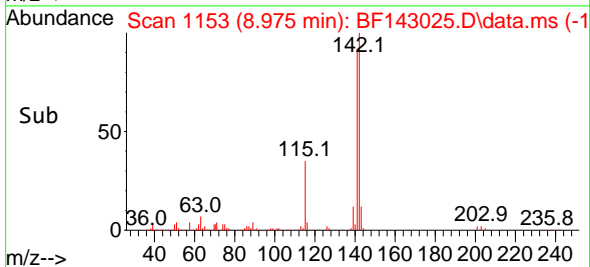
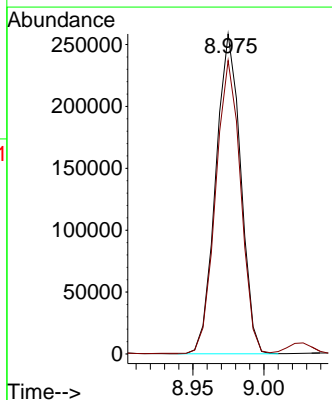
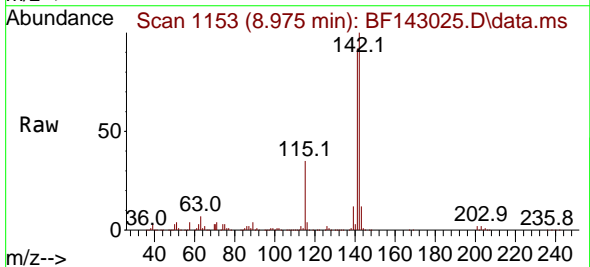
Instrument :
 BNA_F
 ClientSampleId :
 SSTDCCC040

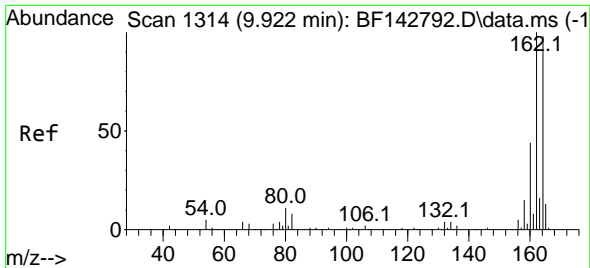
Tgt Ion:142 Resp: 306009
 Ion Ratio Lower Upper
 142 100
 141 88.0 70.9 106.3



#38
 1-Methylnaphthalene
 Concen: 38.925 ng
 RT: 8.975 min Scan# 1153
 Delta R.T. -0.006 min
 Lab File: BF143025.D
 Acq: 08 Jul 2025 10:54

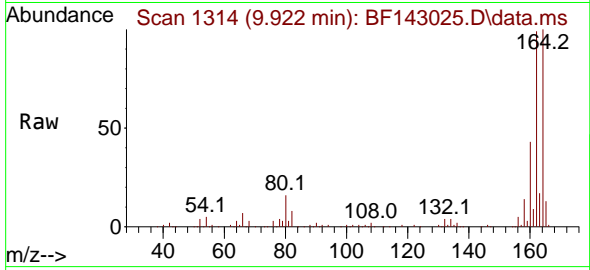
Tgt Ion:142 Resp: 315141
 Ion Ratio Lower Upper
 142 100
 141 91.7 73.0 109.4



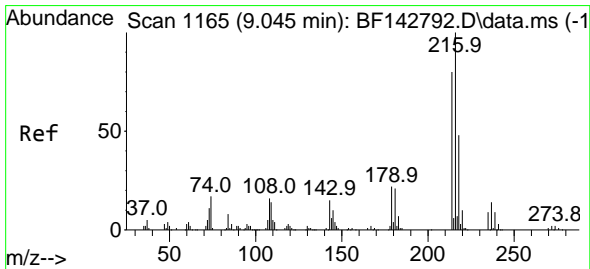
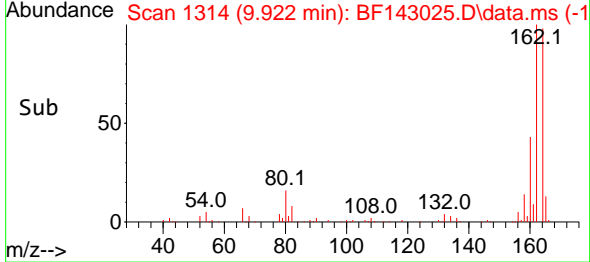
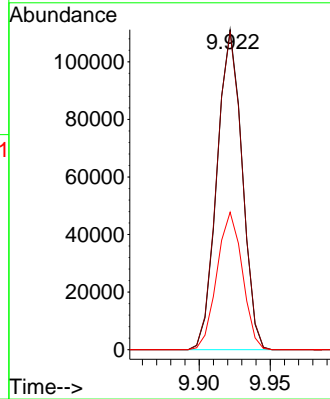


#39
 Acenaphthene-d10
 Concen: 20.000 ng
 RT: 9.922 min Scan# 1113
 Delta R.T. 0.000 min
 Lab File: BF143025.D
 Acq: 08 Jul 2025 10:54

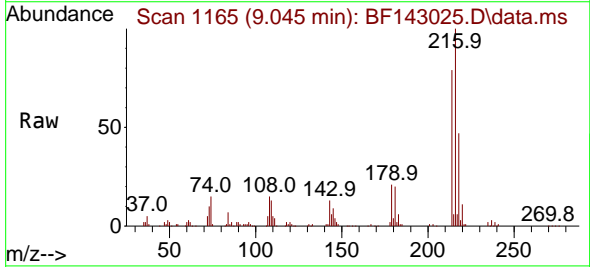
Instrument : BNA_F
 ClientSampleId : SSTDCCC040



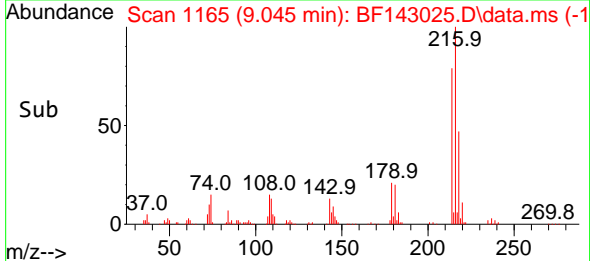
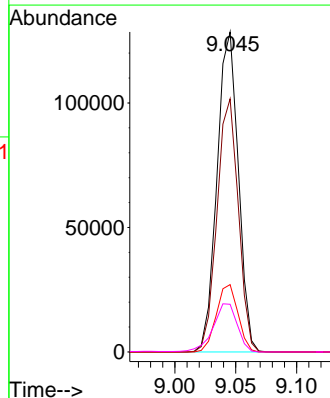
Tgt Ion:164 Resp: 136330
 Ion Ratio Lower Upper
 164 100
 162 99.1 81.8 122.8
 160 43.0 36.0 54.0

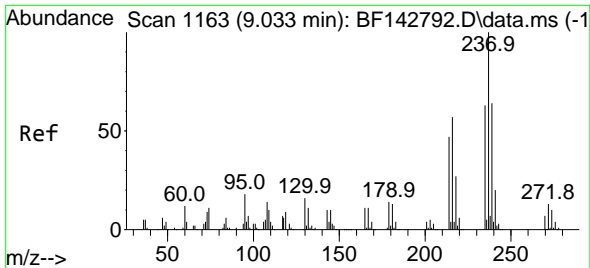


#40
 1,2,4,5-Tetrachlorobenzene
 Concen: 38.905 ng
 RT: 9.045 min Scan# 1165
 Delta R.T. 0.000 min
 Lab File: BF143025.D
 Acq: 08 Jul 2025 10:54



Tgt Ion:216 Resp: 156502
 Ion Ratio Lower Upper
 216 100
 214 79.0 63.7 95.5
 179 21.4 17.6 26.4
 108 17.2 14.3 21.5



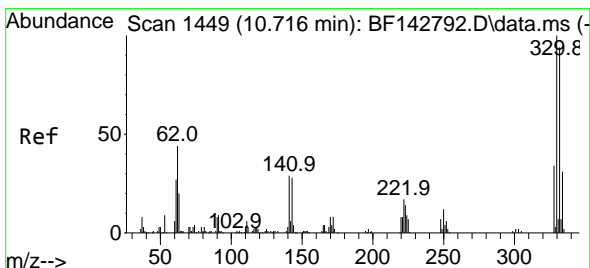
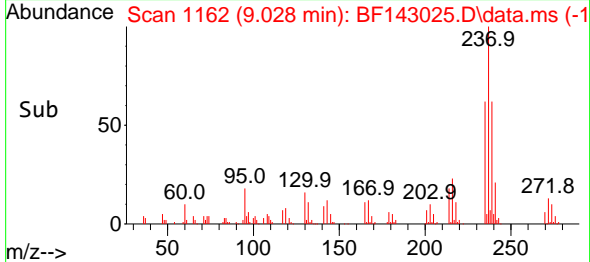
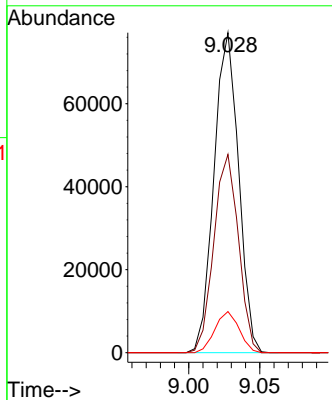
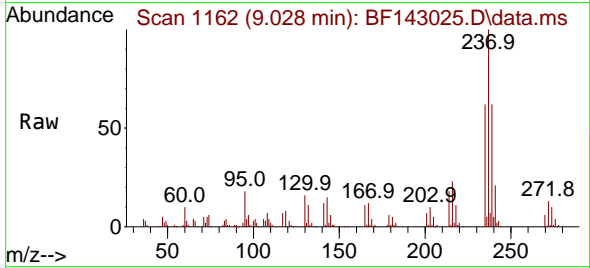


#41
 Hexachlorocyclopentadiene
 Concen: 40.686 ng
 RT: 9.028 min Scan# 1162
 Delta R.T. -0.006 min
 Lab File: BF143025.D
 Acq: 08 Jul 2025 10:54

Instrument :
 BNA_F
 ClientSampleId :
 SSTDCCC040

Tgt Ion:237 Resp: 92877

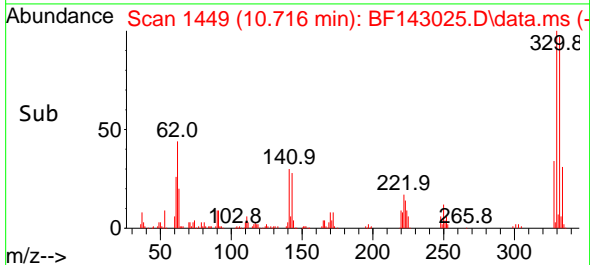
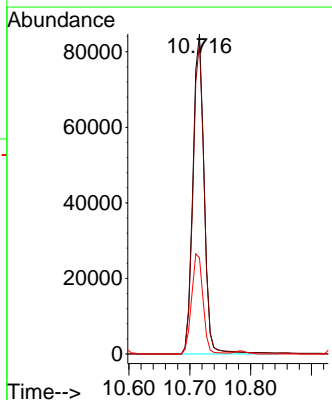
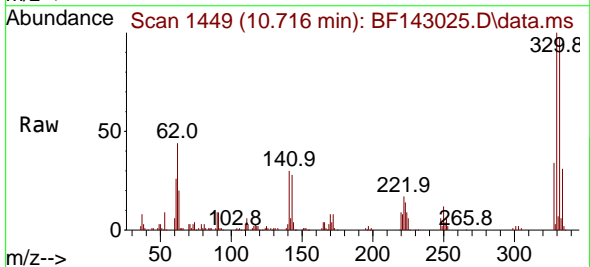
Ion	Ratio	Lower	Upper
237	100		
235	61.9	43.4	83.4
272	12.8	0.0	32.7

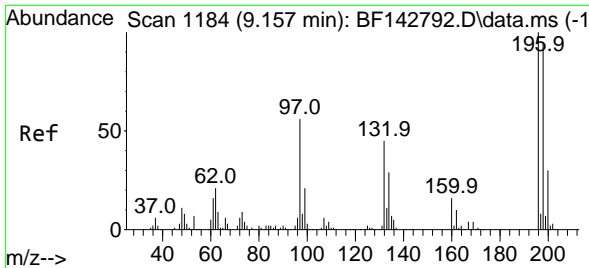


#42
 2,4,6-Tribromophenol
 Concen: 77.630 ng
 RT: 10.716 min Scan# 1449
 Delta R.T. -0.000 min
 Lab File: BF143025.D
 Acq: 08 Jul 2025 10:54

Tgt Ion:330 Resp: 108910

Ion	Ratio	Lower	Upper
330	100		
332	97.1	75.0	112.6
141	31.8	25.3	37.9



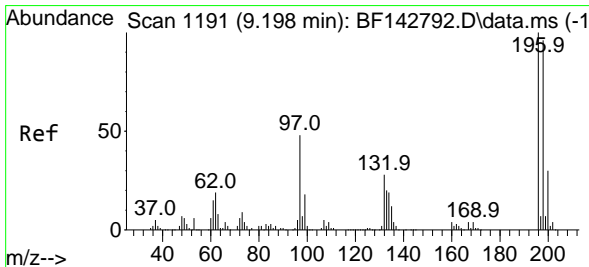
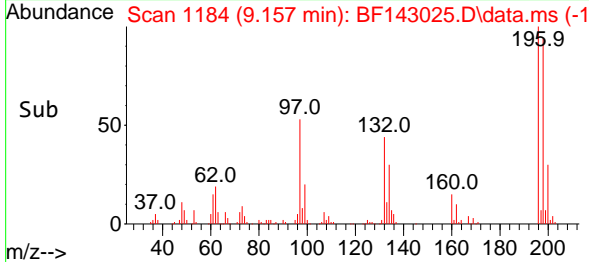
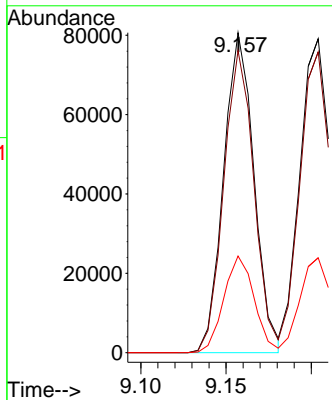
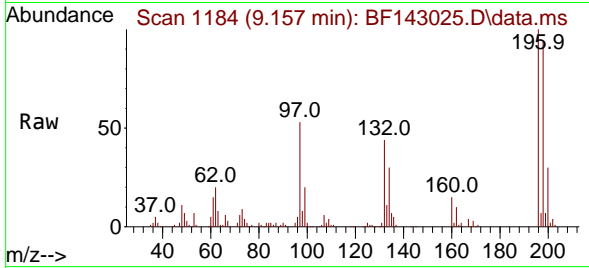


#43
 2,4,6-Trichlorophenol
 Concen: 38.180 ng
 RT: 9.157 min Scan# 1184
 Delta R.T. 0.000 min
 Lab File: BF143025.D
 Acq: 08 Jul 2025 10:54

Instrument : BNA_F
 ClientSampleId : SSTDCCC040

Tgt Ion:196 Resp: 100080

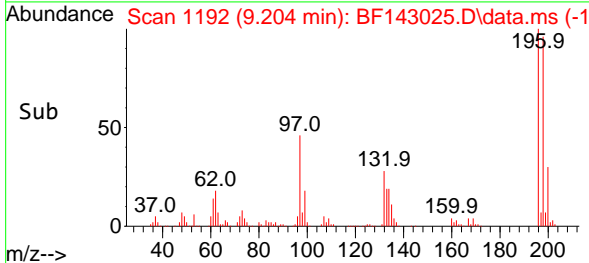
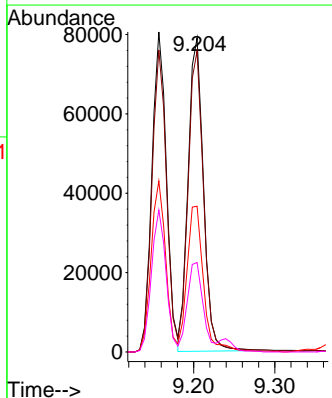
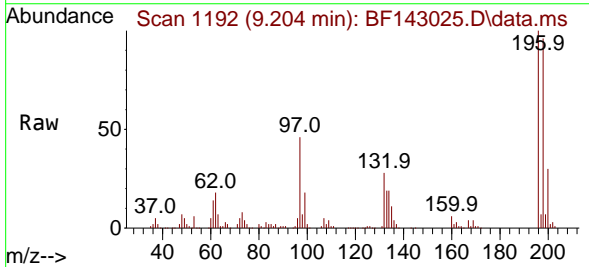
Ion	Ratio	Lower	Upper
196	100		
198	94.4	76.2	114.2
200	30.2	24.1	36.1

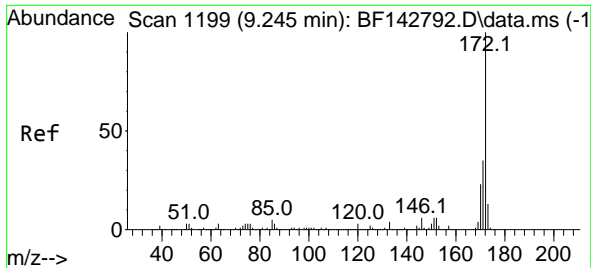


#44
 2,4,5-Trichlorophenol
 Concen: 37.813 ng
 RT: 9.204 min Scan# 1192
 Delta R.T. 0.006 min
 Lab File: BF143025.D
 Acq: 08 Jul 2025 10:54

Tgt Ion:196 Resp: 104339

Ion	Ratio	Lower	Upper
196	100		
198	95.8	76.6	115.0
97	46.4	38.2	57.2
132	28.5	23.4	35.0



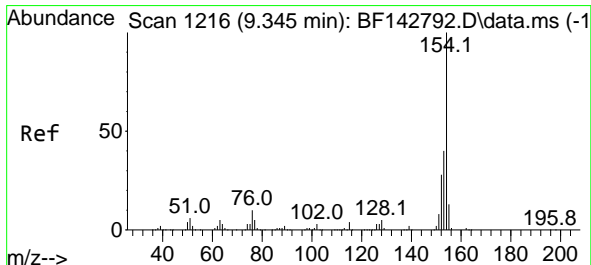
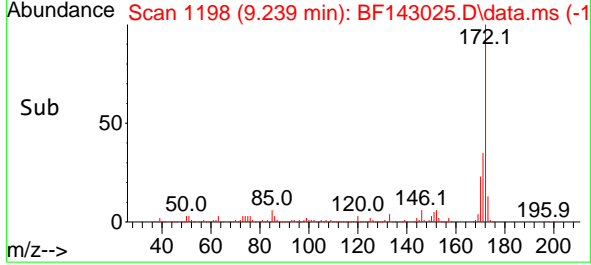
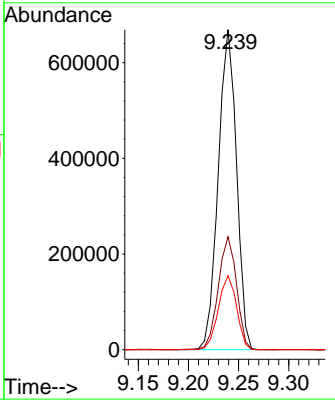
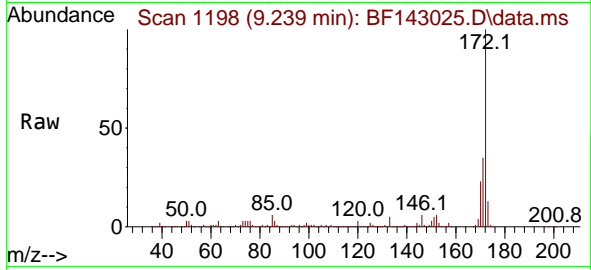


#45
 2-Fluorobiphenyl
 Concen: 81.561 ng
 RT: 9.239 min Scan# 1198
 Delta R.T. -0.006 min
 Lab File: BF143025.D
 Acq: 08 Jul 2025 10:54

Instrument : BNA_F
 ClientSampleId : SSTDCCC040

Tgt Ion:172 Resp: 846426

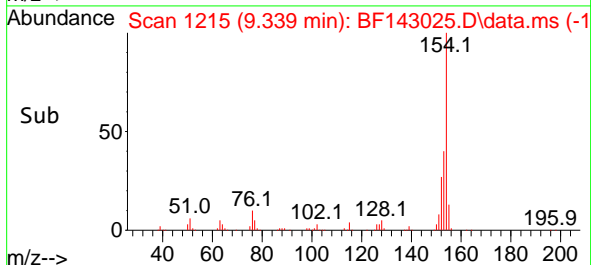
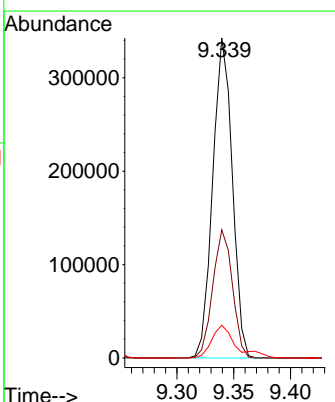
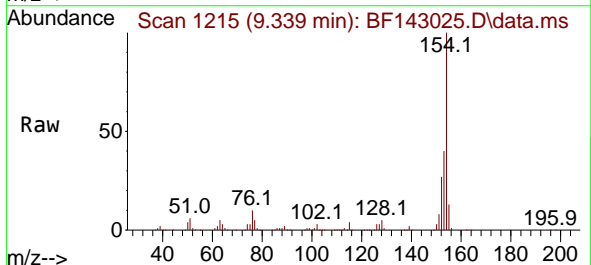
Ion	Ratio	Lower	Upper
172	100		
171	35.3	28.2	42.4
170	23.2	18.5	27.7

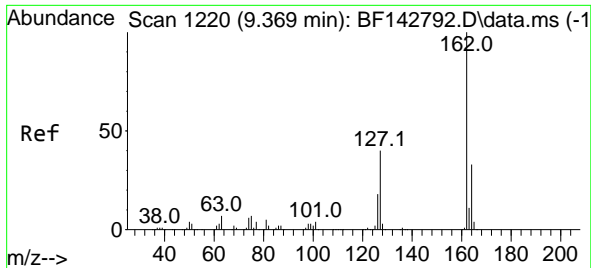


#46
 1,1'-Biphenyl
 Concen: 38.145 ng
 RT: 9.339 min Scan# 1215
 Delta R.T. -0.006 min
 Lab File: BF143025.D
 Acq: 08 Jul 2025 10:54

Tgt Ion:154 Resp: 410792

Ion	Ratio	Lower	Upper
154	100		
153	40.1	20.3	60.3
76	10.2	0.0	30.3



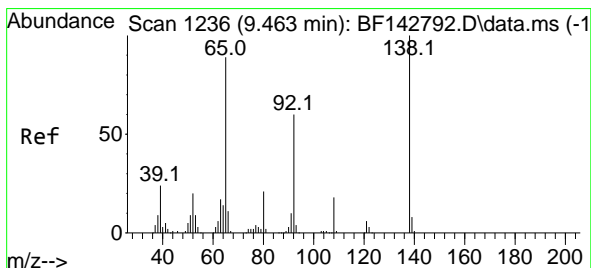
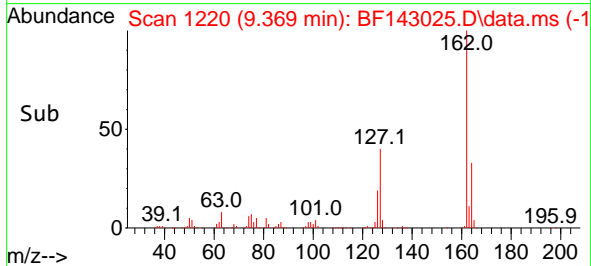
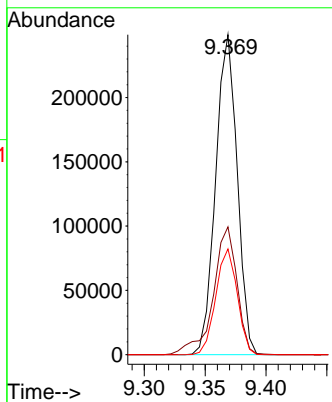
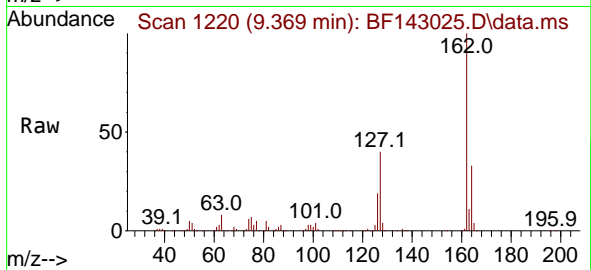


#47
 2-Chloronaphthalene
 Concen: 37.941 ng
 RT: 9.369 min Scan# 11
 Delta R.T. 0.000 min
 Lab File: BF143025.D
 Acq: 08 Jul 2025 10:54

Instrument : BNA_F
 ClientSampleId : SSTDCCC040

Tgt Ion: 162 Resp: 306622

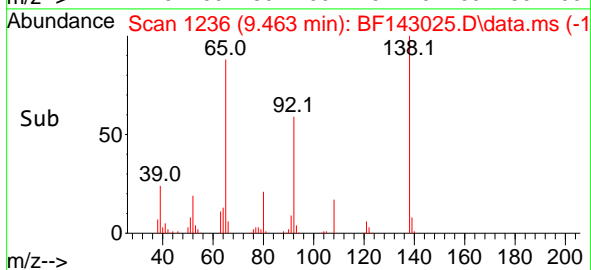
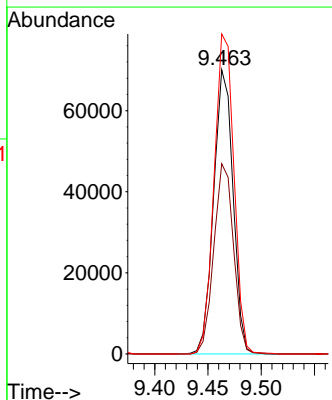
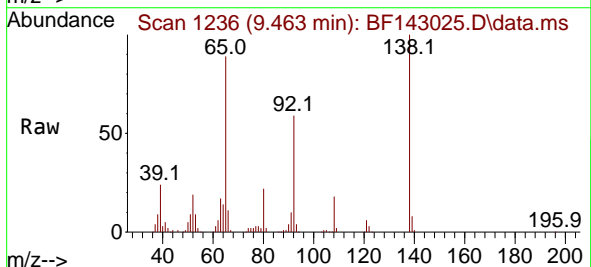
Ion	Ratio	Lower	Upper
162	100		
127	40.0	32.2	48.2
164	33.1	26.1	39.1

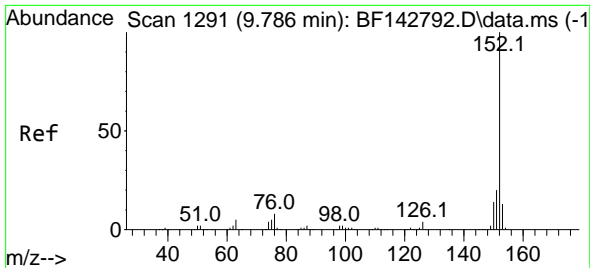


#48
 2-Nitroaniline
 Concen: 39.256 ng
 RT: 9.463 min Scan# 1236
 Delta R.T. 0.000 min
 Lab File: BF143025.D
 Acq: 08 Jul 2025 10:54

Tgt Ion: 65 Resp: 88943

Ion	Ratio	Lower	Upper
65	100		
92	66.9	53.8	80.6
138	112.6	89.6	134.4





#49
 Acenaphthylene
 Concen: 37.997 ng
 RT: 9.781 min Scan# 11
 Delta R.T. -0.006 min
 Lab File: BF143025.D
 Acq: 08 Jul 2025 10:54

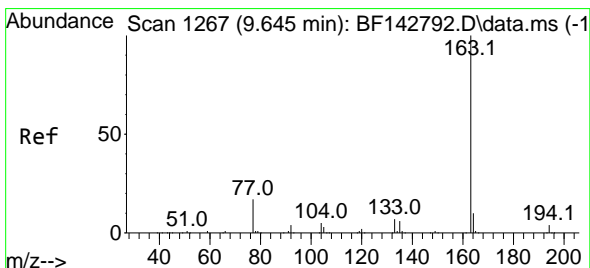
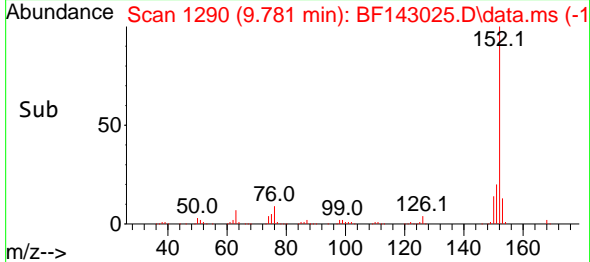
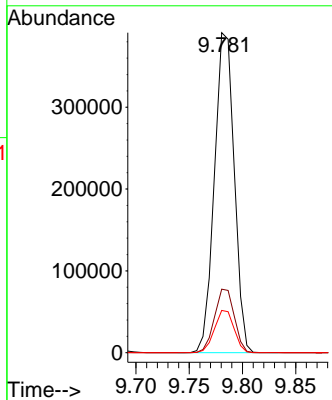
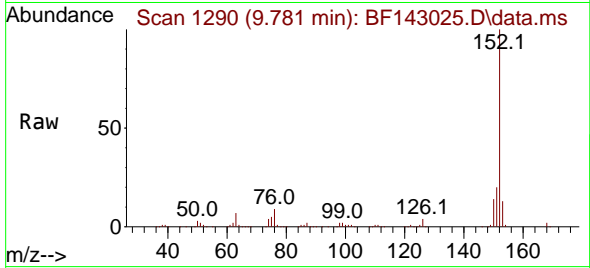
Instrument :

BNA_F

ClientSampleId :

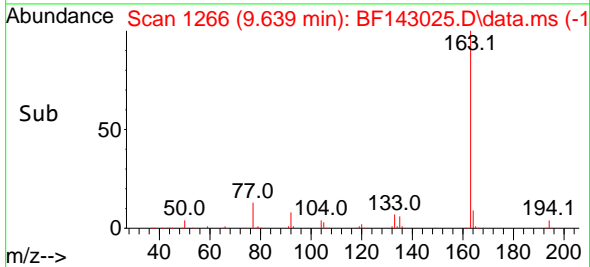
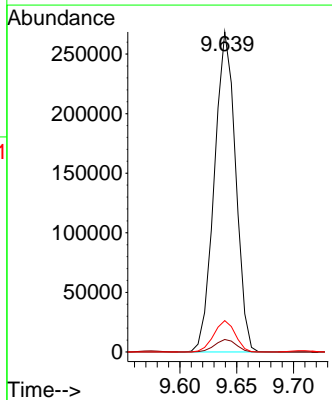
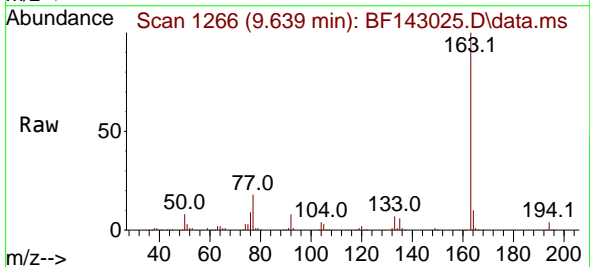
SSTDCCC040

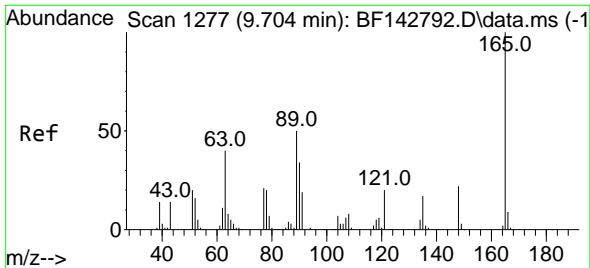
Tgt Ion:152 Resp: 505519
 Ion Ratio Lower Upper
 152 100
 151 19.8 16.1 24.1
 153 13.2 10.4 15.6



#50
 Dimethylphthalate
 Concen: 39.752 ng
 RT: 9.639 min Scan# 1266
 Delta R.T. -0.006 min
 Lab File: BF143025.D
 Acq: 08 Jul 2025 10:54

Tgt Ion:163 Resp: 350801
 Ion Ratio Lower Upper
 163 100
 194 3.9 3.3 4.9
 164 9.8 8.0 12.0





#51
 2,6-Dinitrotoluene
 Concen: 39.188 ng
 RT: 9.710 min Scan# 11
 Delta R.T. 0.006 min
 Lab File: BF143025.D
 Acq: 08 Jul 2025 10:54

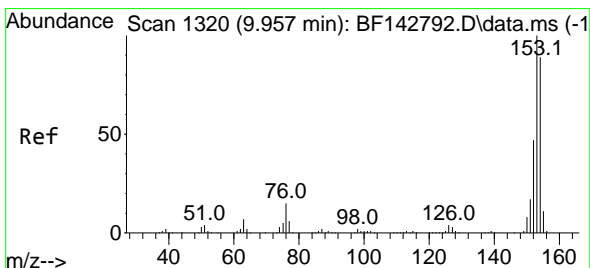
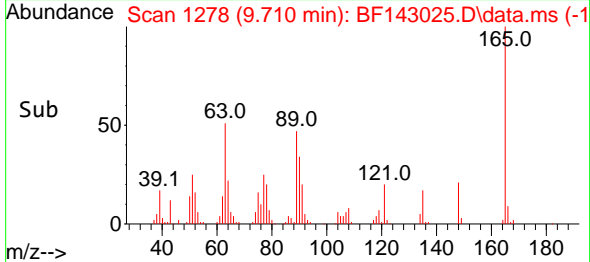
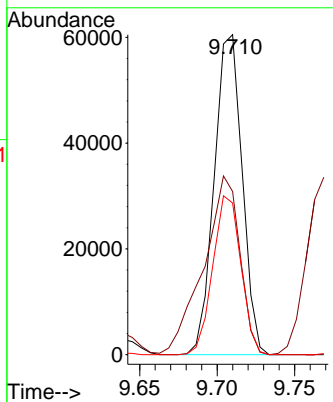
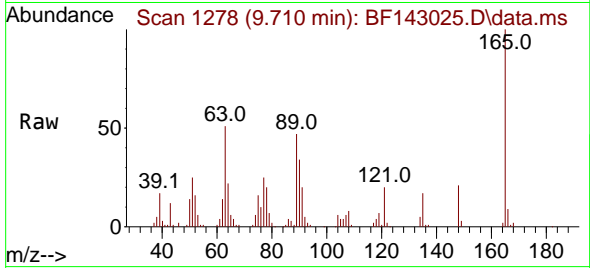
Instrument :

BNA_F

ClientSampleId :

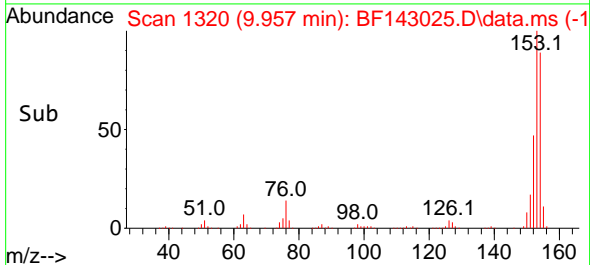
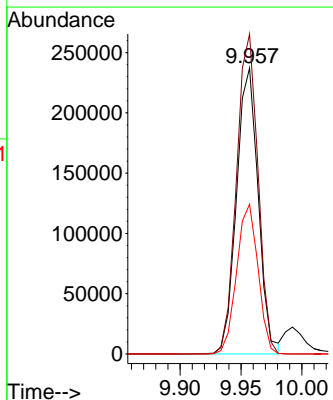
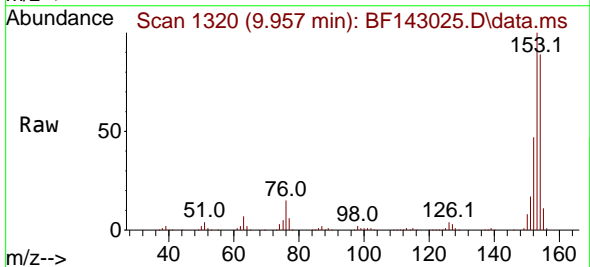
SSTDCCC040

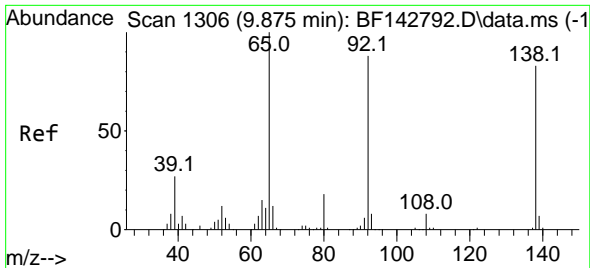
Tgt Ion:165 Resp: 75946
 Ion Ratio Lower Upper
 165 100
 63 51.0 44.2 66.4
 89 47.4 39.8 59.8



#52
 Acenaphthene
 Concen: 36.274 ng
 RT: 9.957 min Scan# 1320
 Delta R.T. 0.000 min
 Lab File: BF143025.D
 Acq: 08 Jul 2025 10:54

Tgt Ion:154 Resp: 294439
 Ion Ratio Lower Upper
 154 100
 153 111.9 90.0 135.0
 152 52.4 41.9 62.9

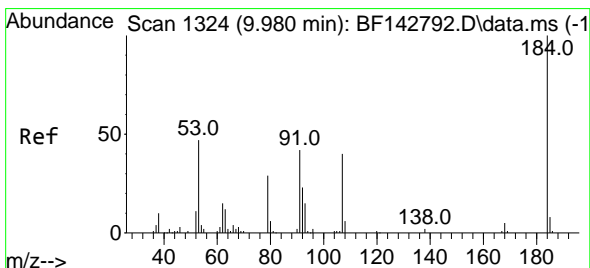
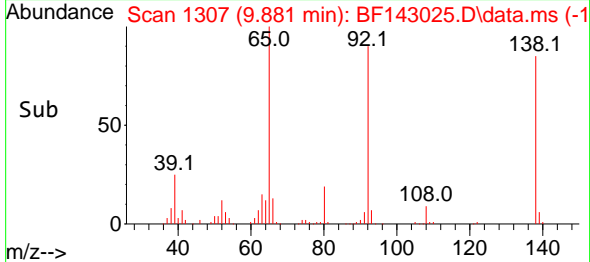
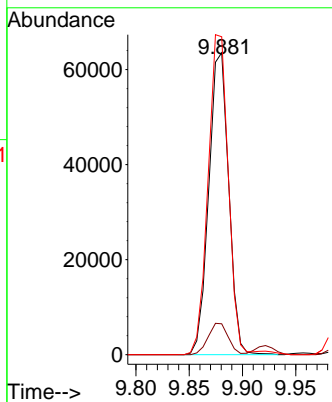
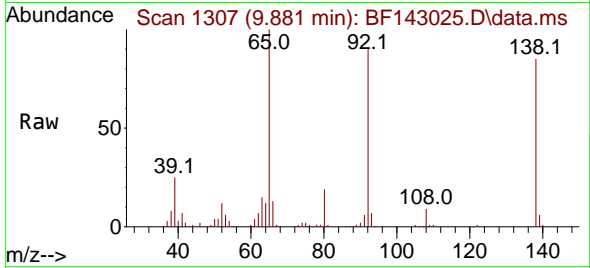




#53
 3-Nitroaniline
 Concen: 38.881 ng
 RT: 9.881 min Scan# 11
 Delta R.T. 0.006 min
 Lab File: BF143025.D
 Acq: 08 Jul 2025 10:54

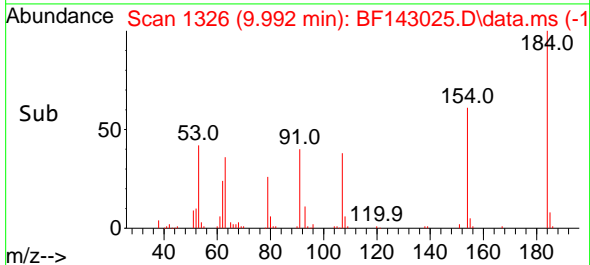
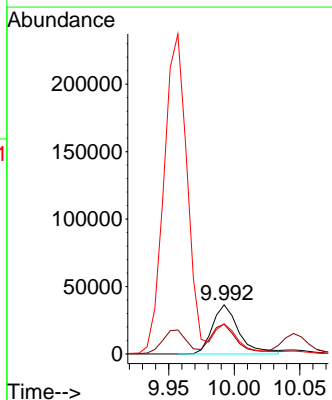
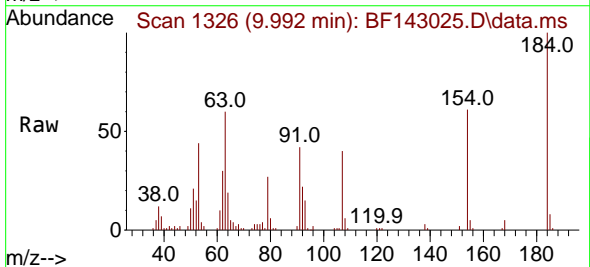
Instrument : BNA_F
 ClientSampleId : SSTDCCC040

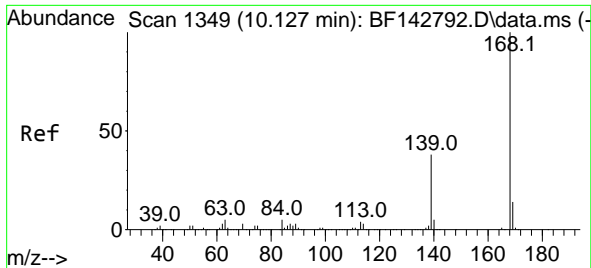
Tgt Ion	Resp	Lower	Upper
138	100		
108	10.2	8.1	12.1
92	105.3	85.1	127.7



#54
 2,4-Dinitrophenol
 Concen: 52.757 ng
 RT: 9.992 min Scan# 1326
 Delta R.T. 0.012 min
 Lab File: BF143025.D
 Acq: 08 Jul 2025 10:54

Tgt Ion	Resp	Lower	Upper
184	100		
63	60.4	50.6	75.8
154	61.1	51.8	77.8



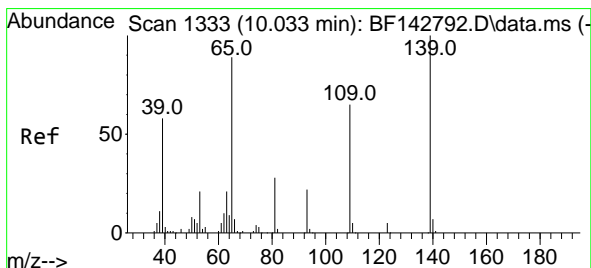
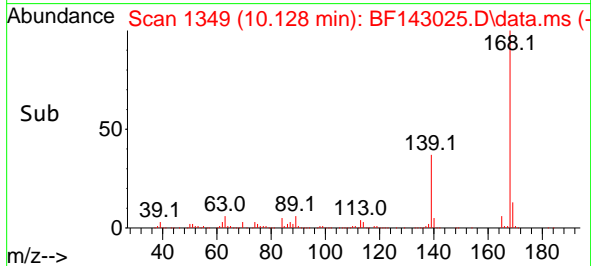
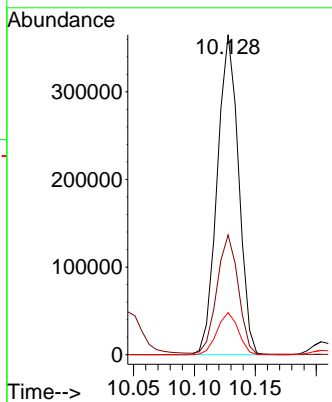
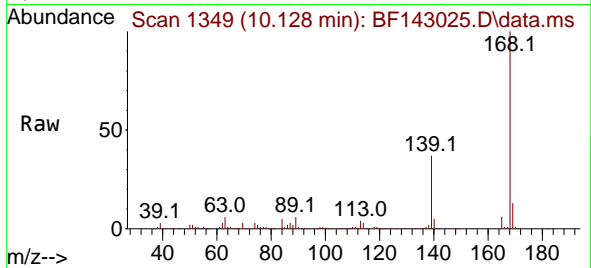


#55
 Dibenzofuran
 Concen: 38.268 ng
 RT: 10.128 min Scan# 11
 Delta R.T. 0.000 min
 Lab File: BF143025.D
 Acq: 08 Jul 2025 10:54

Instrument :
 BNA_F
 ClientSampleId :
 SSTDCCC040

Tgt Ion:168 Resp: 445423

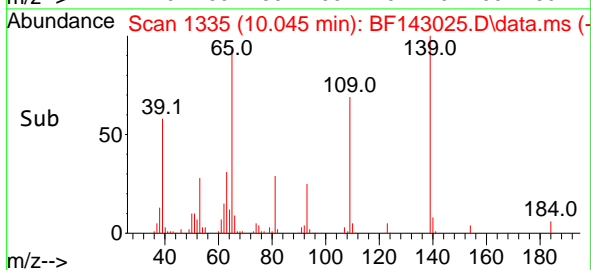
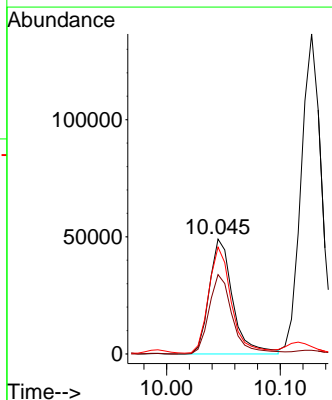
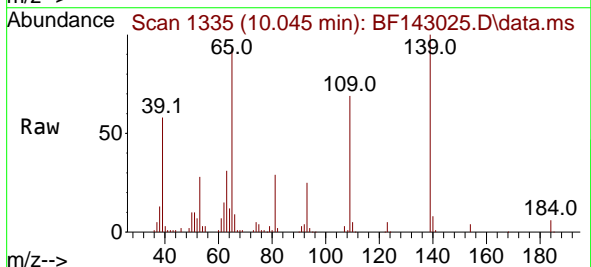
Ion	Ratio	Lower	Upper
168	100		
139	37.4	30.2	45.4
169	13.2	10.8	16.2

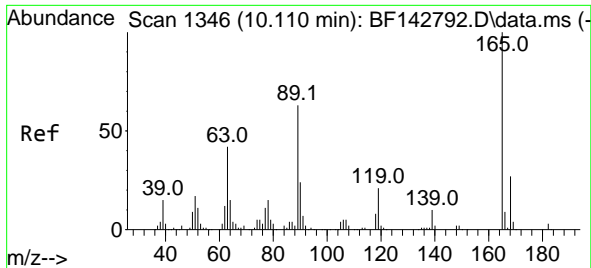


#56
 4-Nitrophenol
 Concen: 48.300 ng
 RT: 10.045 min Scan# 1335
 Delta R.T. 0.012 min
 Lab File: BF143025.D
 Acq: 08 Jul 2025 10:54

Tgt Ion:139 Resp: 70555

Ion	Ratio	Lower	Upper
139	100		
109	69.1	44.7	84.7
65	93.1	69.8	109.8



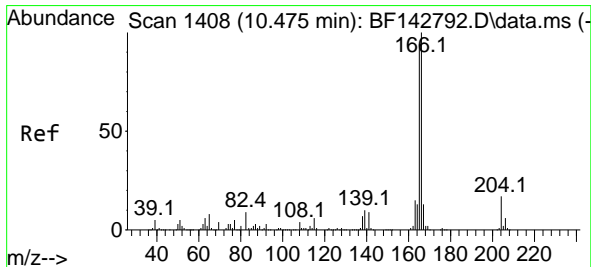
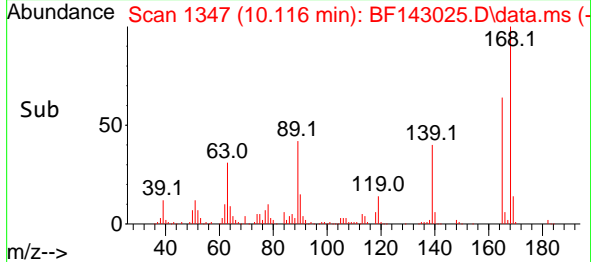
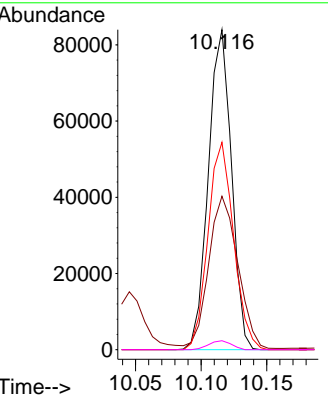
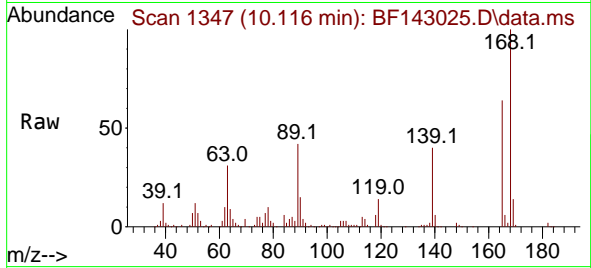


#57
 2,4-Dinitrotoluene
 Concen: 39.860 ng
 RT: 10.116 min Scan# 11
 Delta R.T. 0.006 min
 Lab File: BF143025.D
 Acq: 08 Jul 2025 10:54

Instrument :
 BNA_F
 ClientSampleId :
 SSTDCCC040

Tgt Ion:165 Resp: 102608

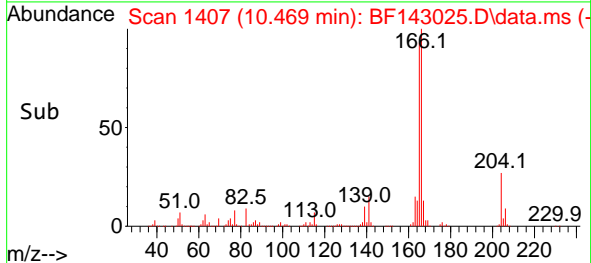
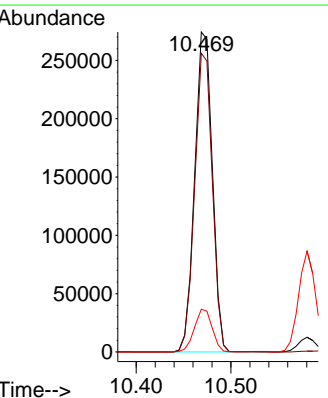
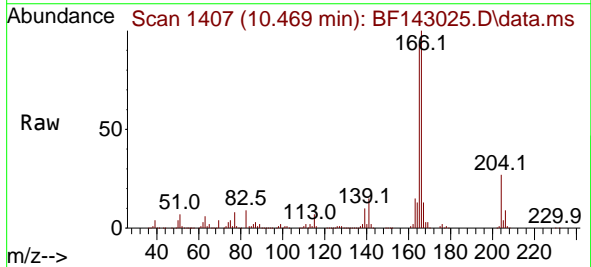
Ion	Ratio	Lower	Upper
165	100		
63	48.0	33.9	50.9
89	64.8	50.6	75.8
182	2.8	2.3	3.5

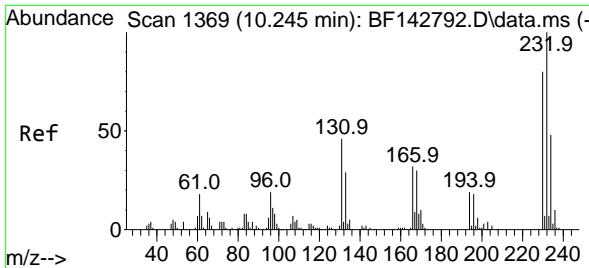


#58
 Fluorene
 Concen: 39.038 ng
 RT: 10.469 min Scan# 1407
 Delta R.T. -0.006 min
 Lab File: BF143025.D
 Acq: 08 Jul 2025 10:54

Tgt Ion:166 Resp: 354875

Ion	Ratio	Lower	Upper
166	100		
165	93.3	75.2	112.8
167	13.4	10.6	15.8

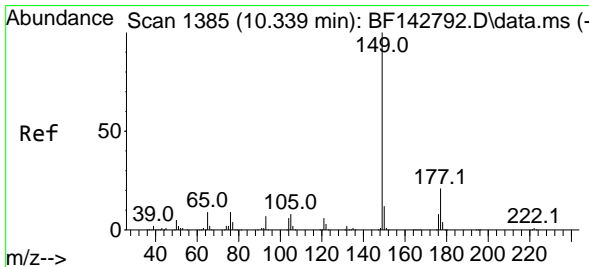
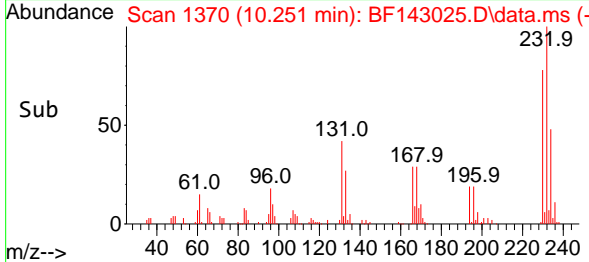
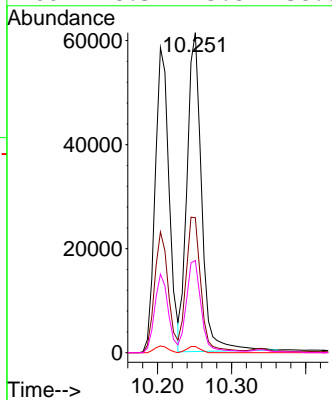
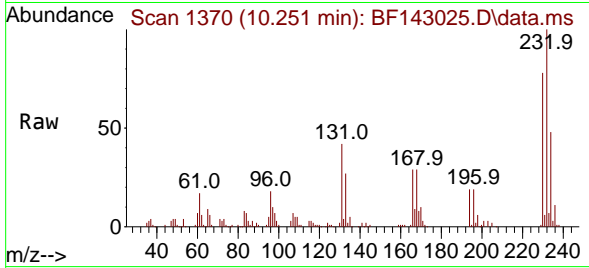




#59
 2,3,4,6-Tetrachlorophenol
 Concen: 37.618 ng
 RT: 10.251 min Scan# 1370
 Delta R.T. 0.006 min
 Lab File: BF143025.D
 Acq: 08 Jul 2025 10:54

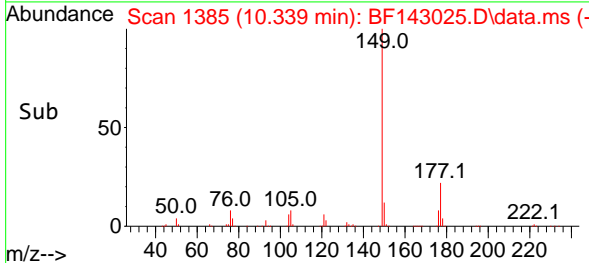
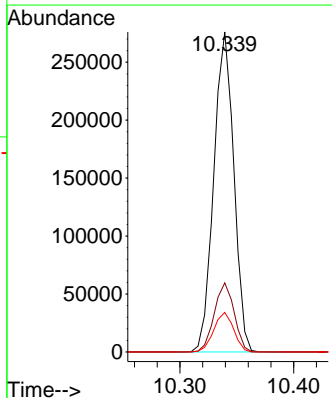
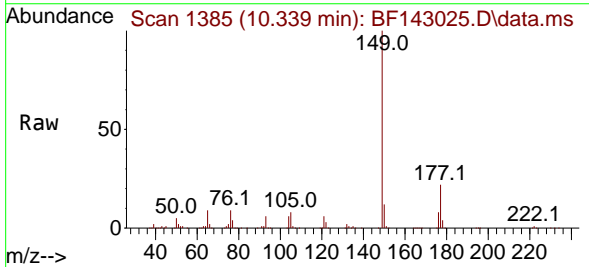
Instrument :
 BNA_F
 ClientSampleId :
 SSTDCCC040

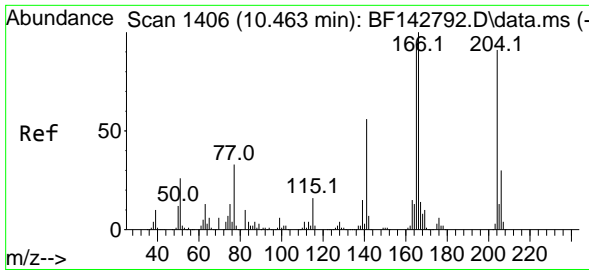
Tgt Ion:232 Resp: 83670
 Ion Ratio Lower Upper
 232 100
 131 43.0 37.6 56.4
 130 1.8 1.7 2.5
 166 28.3 25.8 38.6



#60
 Diethylphthalate
 Concen: 39.111 ng
 RT: 10.339 min Scan# 1385
 Delta R.T. 0.000 min
 Lab File: BF143025.D
 Acq: 08 Jul 2025 10:54

Tgt Ion:149 Resp: 338403
 Ion Ratio Lower Upper
 149 100
 177 21.6 17.0 25.6
 150 12.4 9.8 14.6

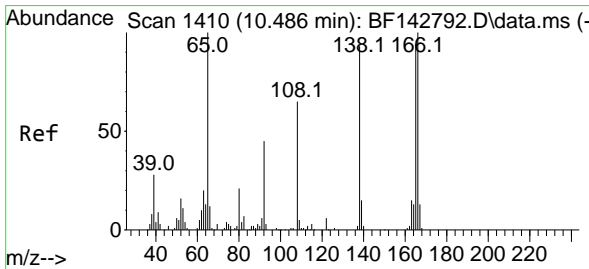
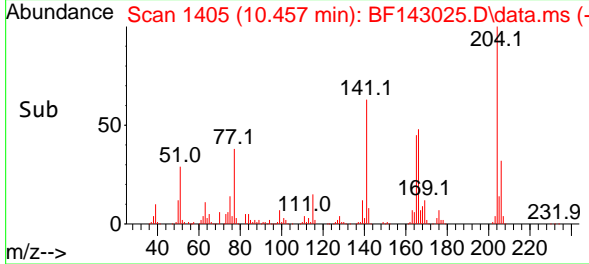
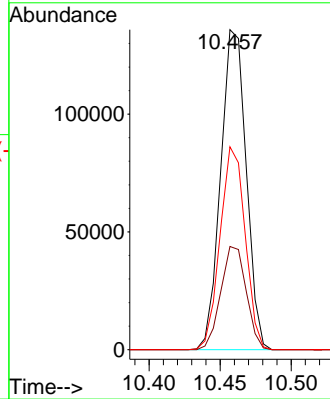
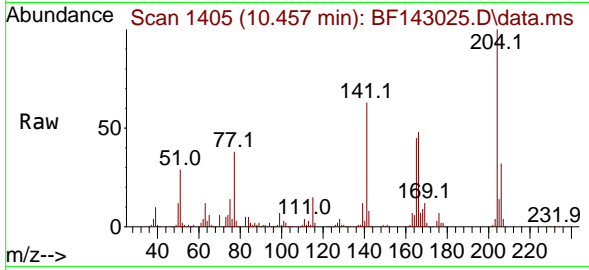




#61
 4-Chlorophenyl-phenylether
 Concen: 39.156 ng
 RT: 10.457 min Scan# 1405
 Delta R.T. -0.006 min
 Lab File: BF143025.D
 Acq: 08 Jul 2025 10:54

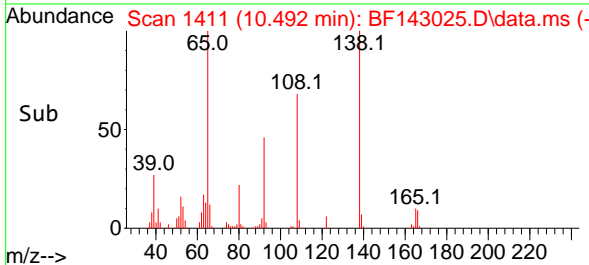
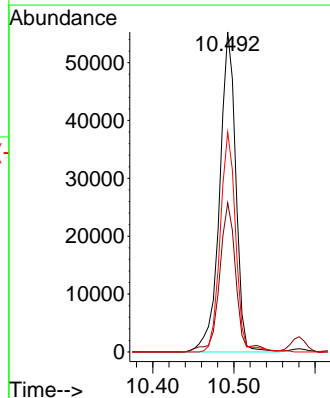
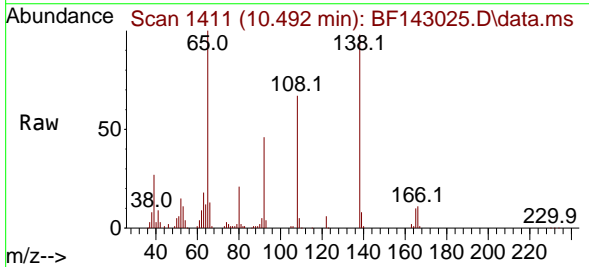
Instrument :
 BNA_F
 ClientSampleId :
 SSTDCCC040

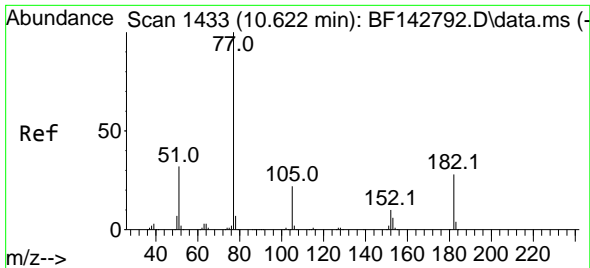
Tgt Ion	Resp	Lower	Upper
204	169854		
206	32.3	26.3	39.5
141	63.4	49.1	73.7



#62
 4-Nitroaniline
 Concen: 39.365 ng
 RT: 10.492 min Scan# 1411
 Delta R.T. 0.006 min
 Lab File: BF143025.D
 Acq: 08 Jul 2025 10:54

Tgt Ion	Resp	Lower	Upper
138	76818		
92	46.6	28.4	68.4
108	68.7	50.2	90.2

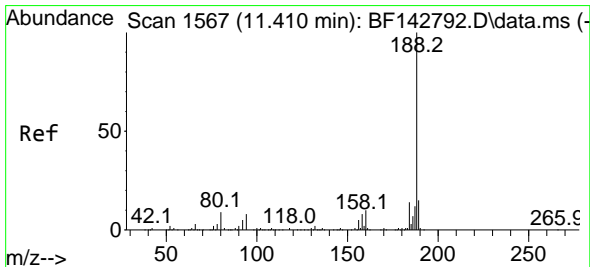
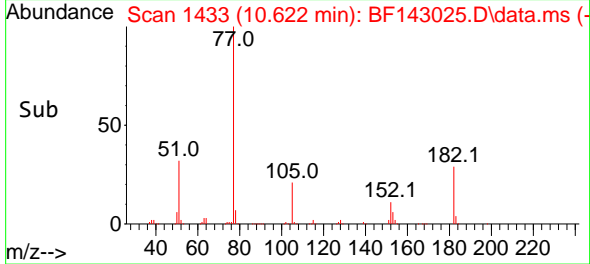
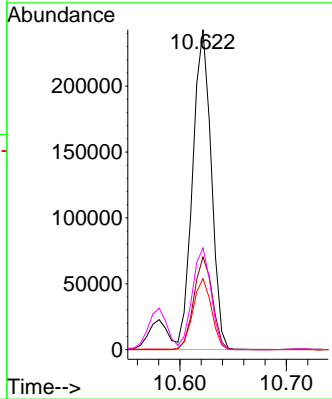
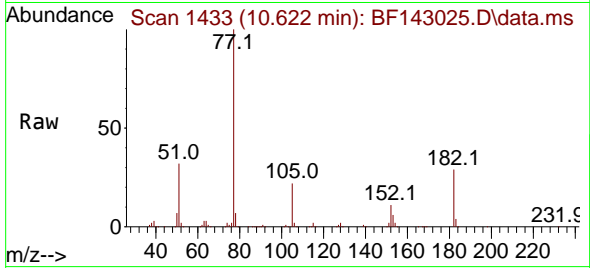




#63
 Azobenzene
 Concen: 37.977 ng
 RT: 10.622 min Scan# 1433
 Delta R.T. 0.000 min
 Lab File: BF143025.D
 Acq: 08 Jul 2025 10:54

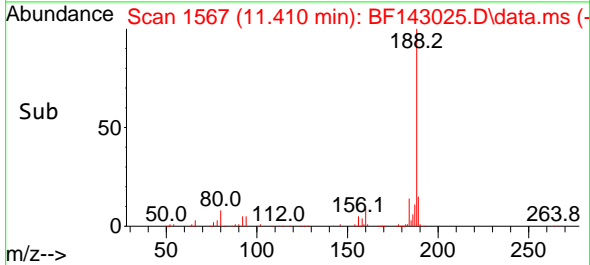
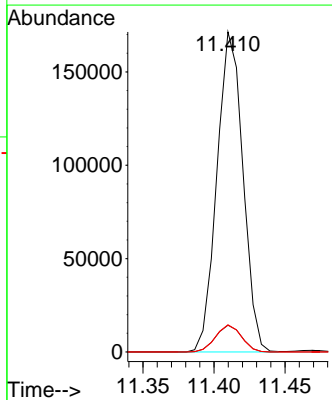
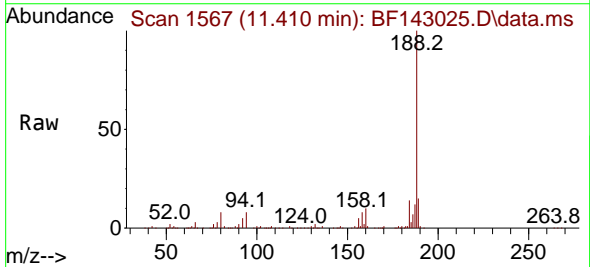
Instrument : BNA_F
 ClientSampleId : SSTDCCC040

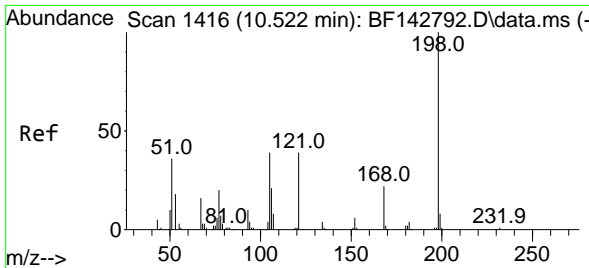
Tgt Ion	Resp	Lower	Upper
77	100		
182	28.9	7.7	47.7
105	22.2	1.9	41.9
51	31.8	13.3	53.3



#64
 Phenanthrene-d10
 Concen: 20.000 ng
 RT: 11.410 min Scan# 1567
 Delta R.T. 0.000 min
 Lab File: BF143025.D
 Acq: 08 Jul 2025 10:54

Tgt Ion	Resp	Lower	Upper
188	100		
94	8.3	6.7	10.1
80	8.5	6.9	10.3

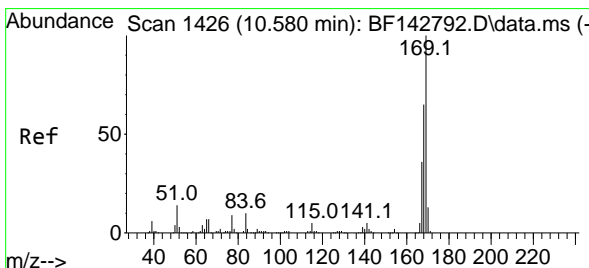
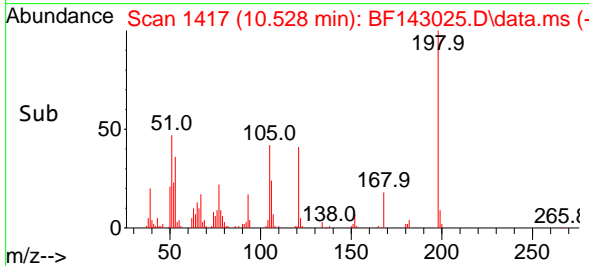
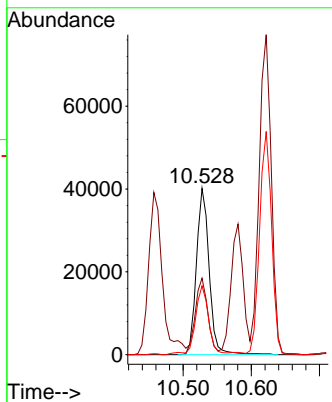
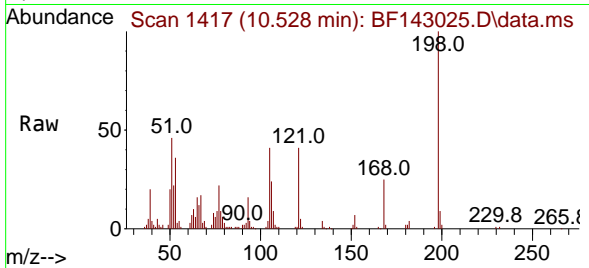




#65
 4,6-Dinitro-2-methylphenol
 Concen: 39.580 ng
 RT: 10.528 min Scan# 1417
 Delta R.T. 0.006 min
 Lab File: BF143025.D
 Acq: 08 Jul 2025 10:54

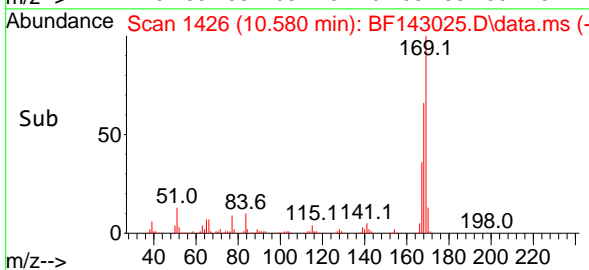
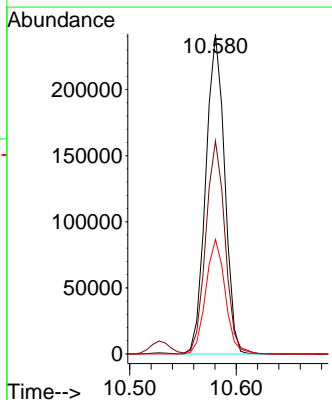
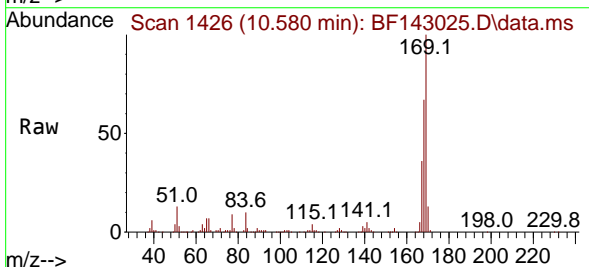
Instrument :
 BNA_F
 ClientSampleId :
 SSTDCCC040

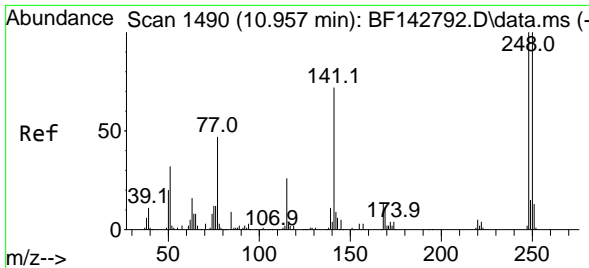
Tgt Ion:198 Resp: 52231
 Ion Ratio Lower Upper
 198 100
 51 46.0 25.4 65.4
 105 41.4 20.4 60.4



#66
 n-Nitrosodiphenylamine
 Concen: 39.436 ng
 RT: 10.580 min Scan# 1426
 Delta R.T. 0.000 min
 Lab File: BF143025.D
 Acq: 08 Jul 2025 10:54

Tgt Ion:169 Resp: 298183
 Ion Ratio Lower Upper
 169 100
 168 66.6 51.9 77.9
 167 35.8 28.5 42.7



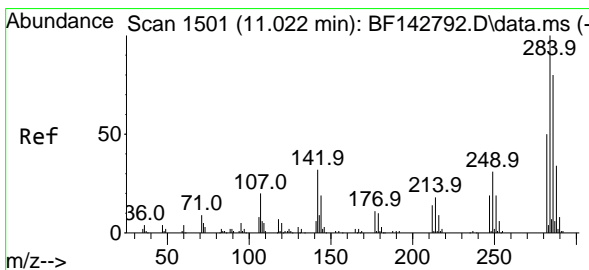
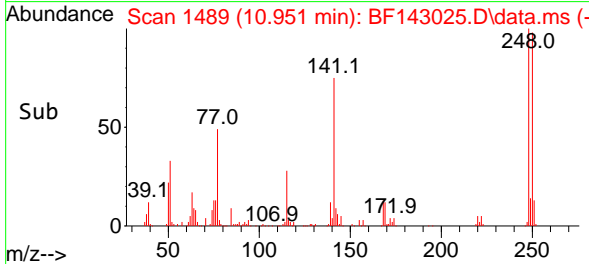
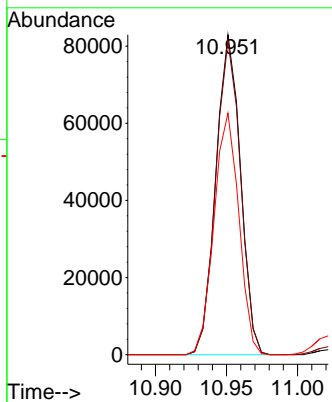
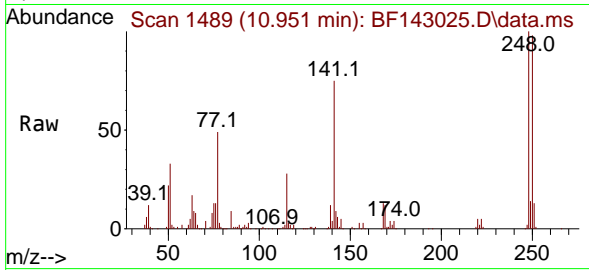


#67
 4-Bromophenyl-phenylether
 Concen: 40.413 ng
 RT: 10.951 min Scan# 1489
 Delta R.T. -0.006 min
 Lab File: BF143025.D
 Acq: 08 Jul 2025 10:54

Instrument :
 BNA_F
 ClientSampleId :
 SSTDCCC040

Tgt Ion:248 Resp: 100343

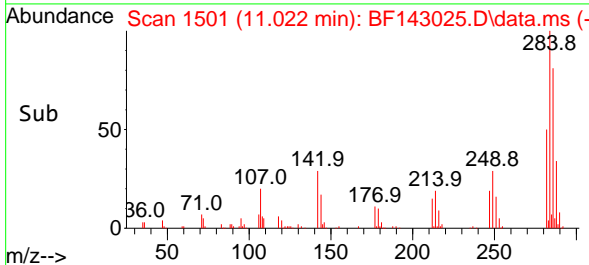
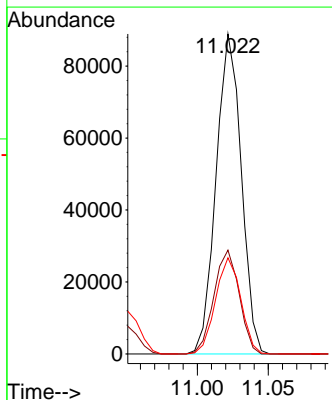
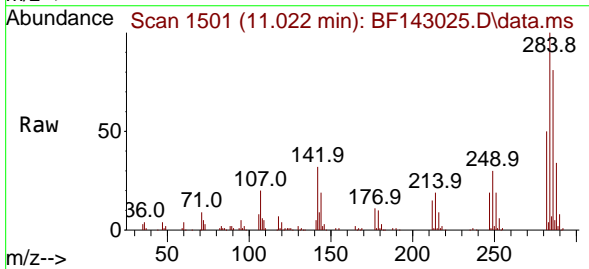
Ion	Ratio	Lower	Upper
248	100		
250	98.1	79.8	119.8
141	75.5	57.8	86.6

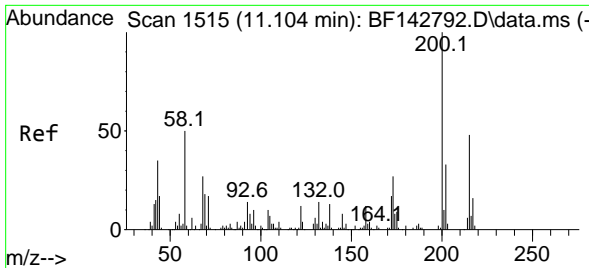


#68
 Hexachlorobenzene
 Concen: 39.689 ng
 RT: 11.022 min Scan# 1501
 Delta R.T. 0.000 min
 Lab File: BF143025.D
 Acq: 08 Jul 2025 10:54

Tgt Ion:284 Resp: 109501

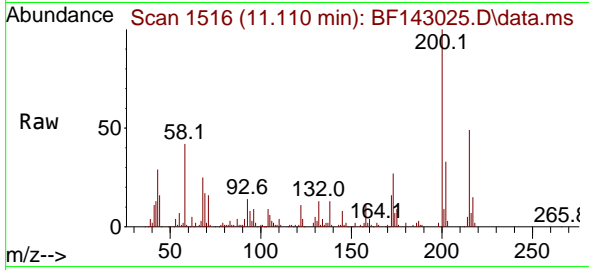
Ion	Ratio	Lower	Upper
284	100		
142	32.5	25.5	38.3
249	30.0	24.9	37.3



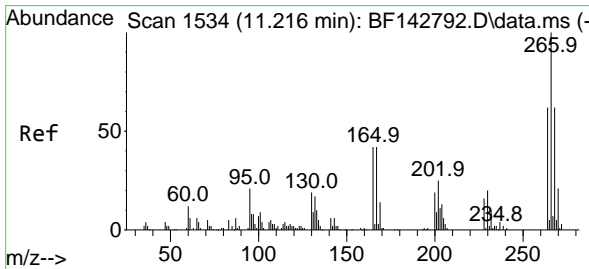
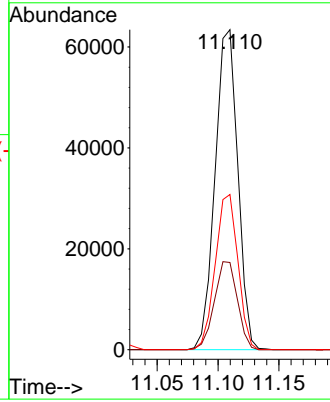
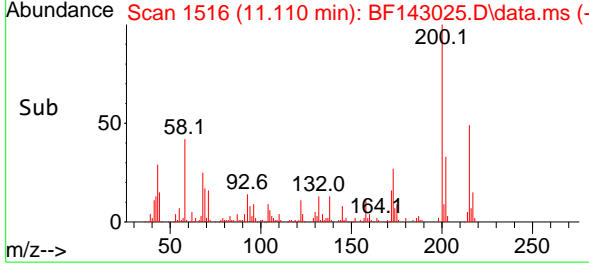


#69
 Atrazine
 Concen: 42.266 ng
 RT: 11.110 min Scan# 11
 Delta R.T. 0.006 min
 Lab File: BF143025.D
 Acq: 08 Jul 2025 10:54

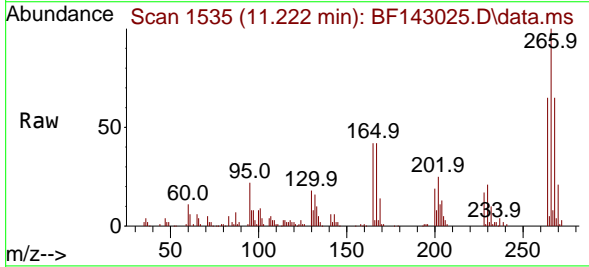
Instrument :
 BNA_F
 ClientSampleId :
 SSTDCCC040



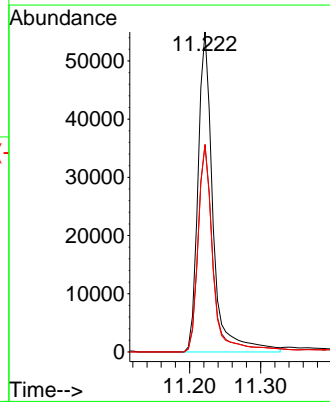
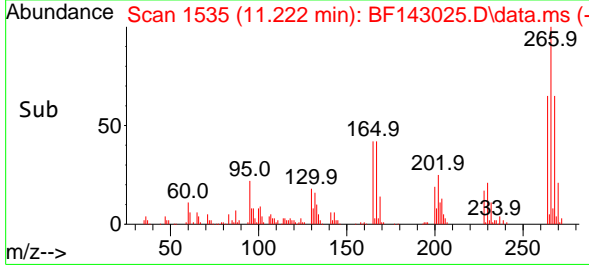
Tgt Ion:200 Resp: 82526
 Ion Ratio Lower Upper
 200 100
 173 27.3 7.4 47.4
 215 48.5 28.4 68.4

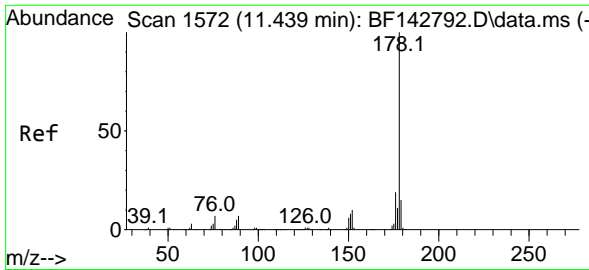


#70
 Pentachlorophenol
 Concen: 58.845 ng
 RT: 11.222 min Scan# 1535
 Delta R.T. 0.006 min
 Lab File: BF143025.D
 Acq: 08 Jul 2025 10:54



Tgt Ion:266 Resp: 80900
 Ion Ratio Lower Upper
 266 100
 268 64.8 49.8 74.8
 264 64.7 49.9 74.9



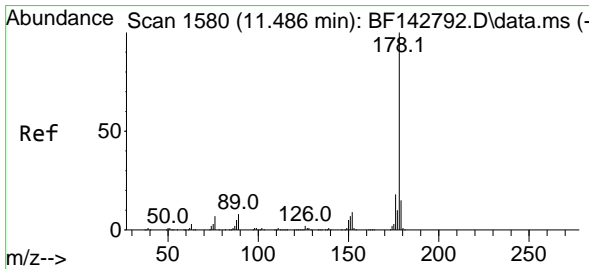
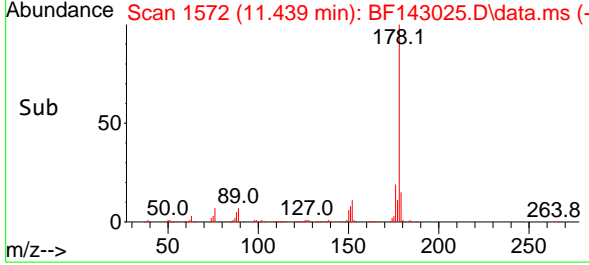
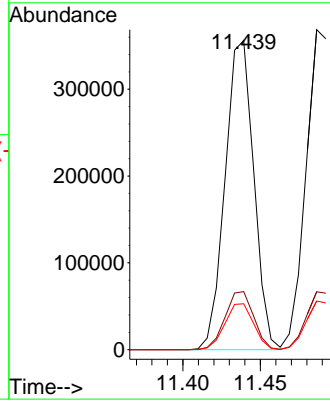
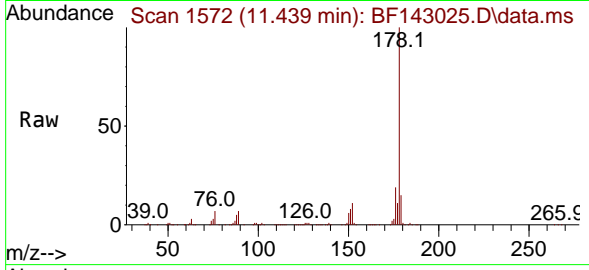


#71
 Phenanthrene
 Concen: 38.822 ng
 RT: 11.439 min Scan# 1143025.D
 Delta R.T. 0.000 min
 Lab File: BF143025.D
 Acq: 08 Jul 2025 10:54

Instrument : BNA_F
 ClientSampleId : SSTDCCC040

Tgt Ion:178 Resp: 458805

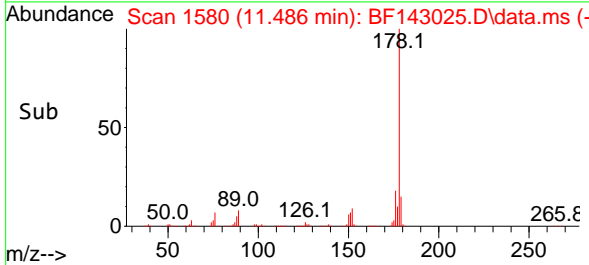
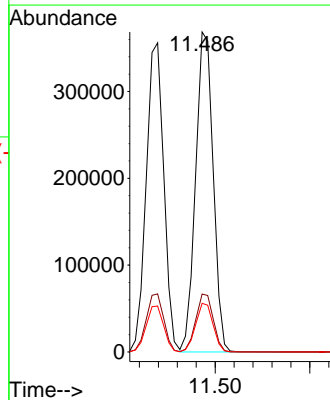
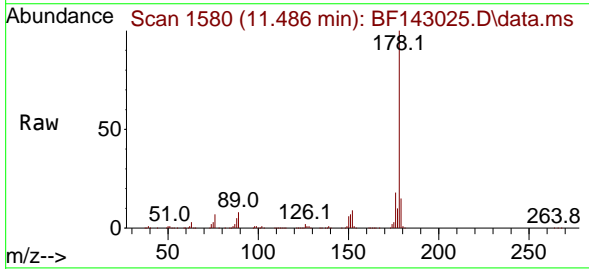
Ion	Ratio	Lower	Upper
178	100		
176	18.8	15.1	22.7
179	14.9	12.0	18.0

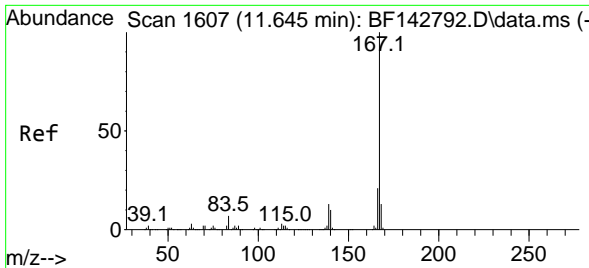


#72
 Anthracene
 Concen: 39.196 ng
 RT: 11.486 min Scan# 1580
 Delta R.T. 0.000 min
 Lab File: BF143025.D
 Acq: 08 Jul 2025 10:54

Tgt Ion:178 Resp: 475083

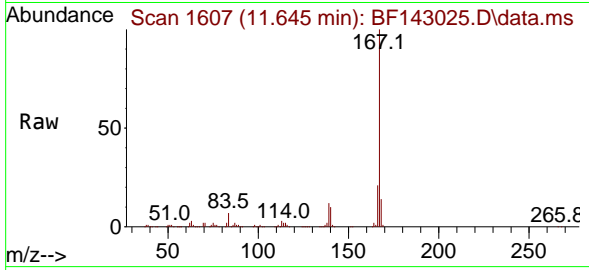
Ion	Ratio	Lower	Upper
178	100		
176	18.1	14.6	21.8
179	15.2	12.4	18.6



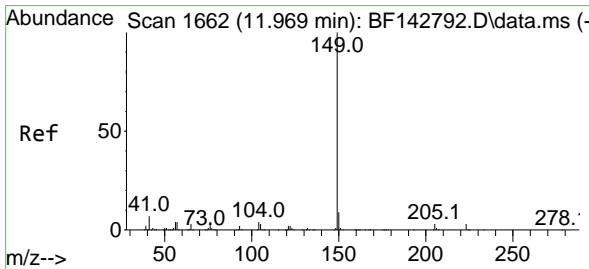
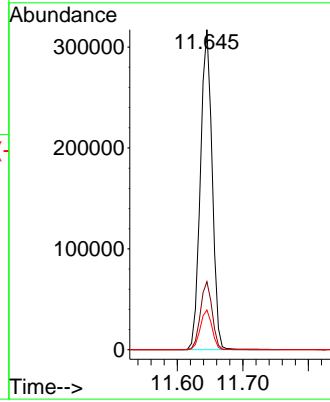
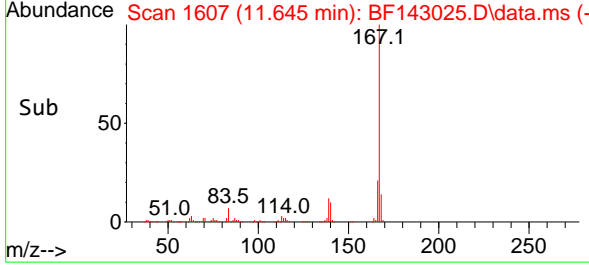


#73
 Carbazole
 Concen: 37.887 ng
 RT: 11.645 min Scan# 1607
 Delta R.T. 0.000 min
 Lab File: BF143025.D
 Acq: 08 Jul 2025 10:54

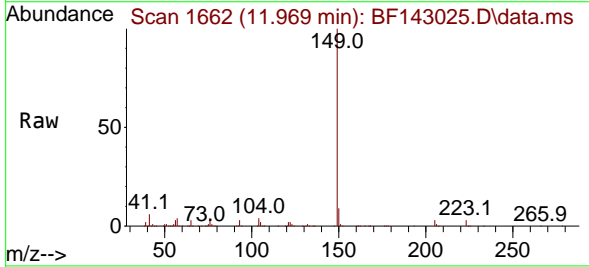
Instrument : BNA_F
 ClientSampleId : SSTDCCC040



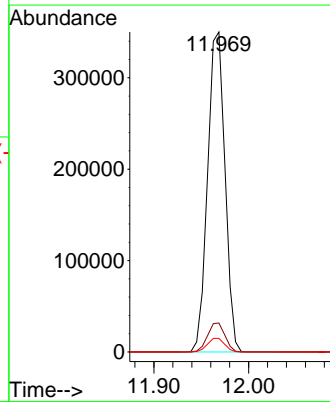
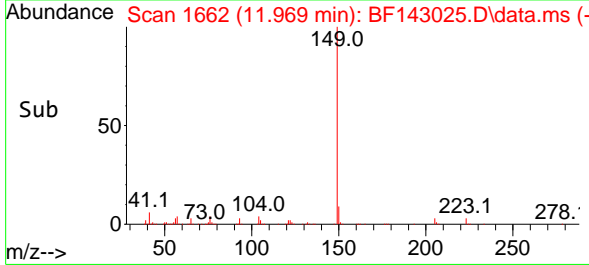
Tgt Ion:167 Resp: 396286
 Ion Ratio Lower Upper
 167 100
 166 21.2 17.0 25.4
 139 12.4 10.2 15.2

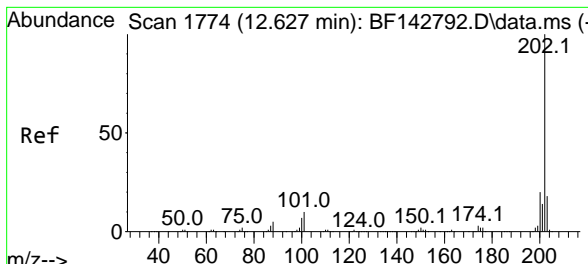


#74
 Di-n-butylphthalate
 Concen: 40.919 ng
 RT: 11.969 min Scan# 1662
 Delta R.T. 0.000 min
 Lab File: BF143025.D
 Acq: 08 Jul 2025 10:54



Tgt Ion:149 Resp: 445869
 Ion Ratio Lower Upper
 149 100
 150 9.0 7.4 11.0
 104 4.2 3.5 5.3



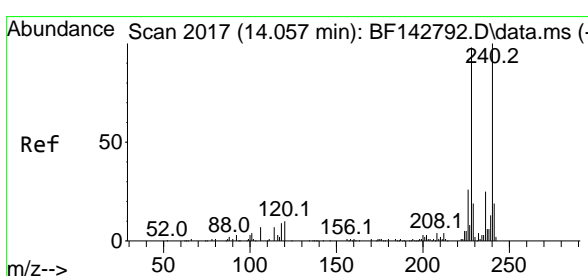
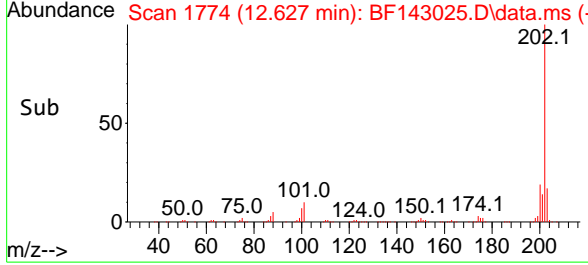
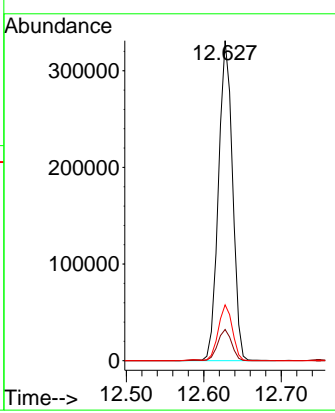
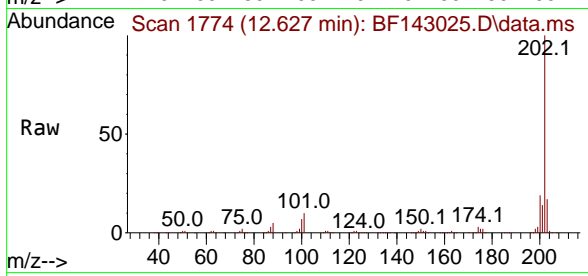


#75
 Fluoranthene
 Concen: 37.322 ng
 RT: 12.627 min Scan# 11
 Delta R.T. 0.000 min
 Lab File: BF143025.D
 Acq: 08 Jul 2025 10:54

Instrument : BNA_F
 ClientSampleId : SSTDCCC040

Tgt Ion: 202 Resp: 418605

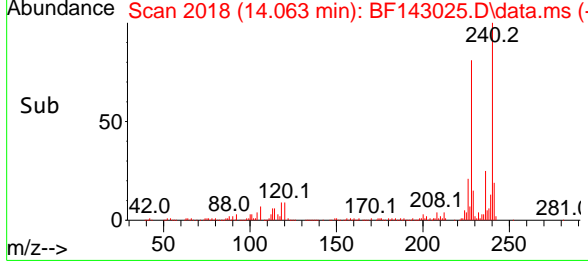
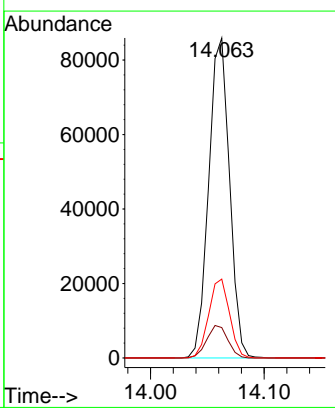
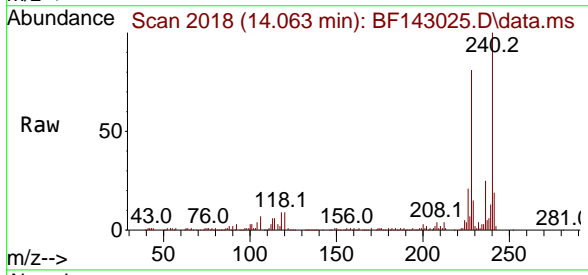
Ion	Ratio	Lower	Upper
202	100		
101	9.8	0.0	29.7
203	17.4	0.0	37.5

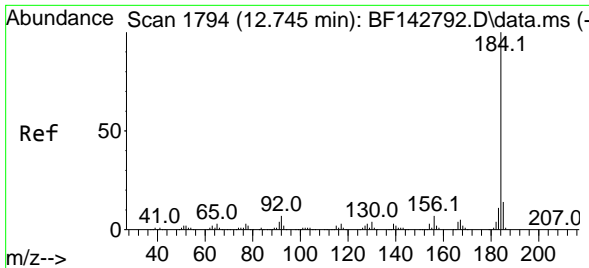


#76
 Chrysene-d12
 Concen: 20.000 ng
 RT: 14.063 min Scan# 2018
 Delta R.T. 0.006 min
 Lab File: BF143025.D
 Acq: 08 Jul 2025 10:54

Tgt Ion: 240 Resp: 109391

Ion	Ratio	Lower	Upper
240	100		
120	9.5	8.2	12.2
236	24.6	19.8	29.8



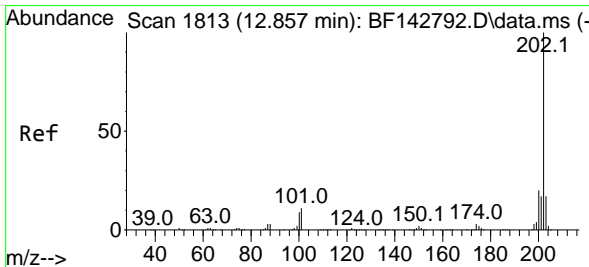
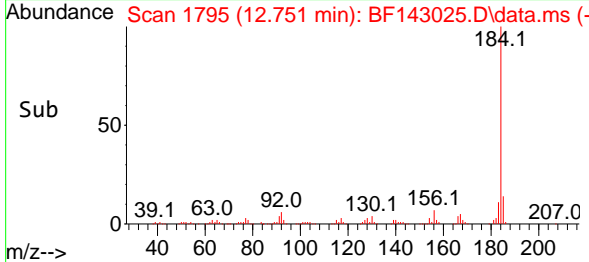
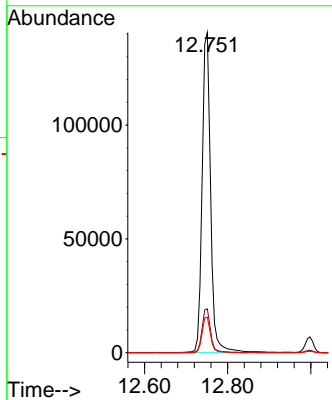
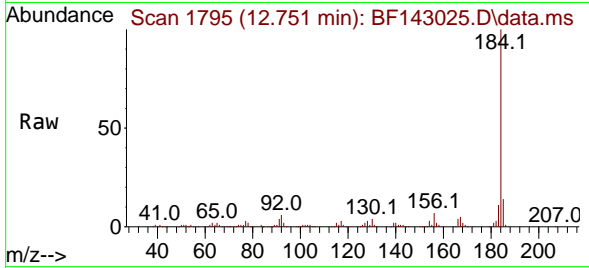


#77
 Benzidine
 Concen: 48.779 ng
 RT: 12.751 min Scan# 11
 Delta R.T. 0.006 min
 Lab File: BF143025.D
 Acq: 08 Jul 2025 10:54

Instrument : BNA_F
 ClientSampleId : SSTDCCC040

Tgt Ion:184 Resp: 200477

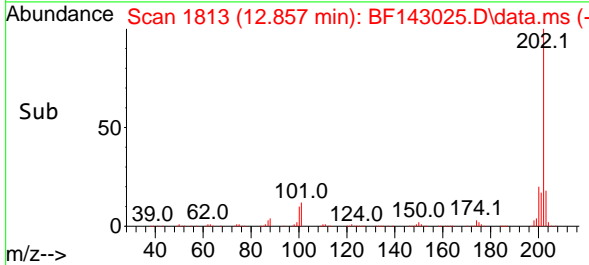
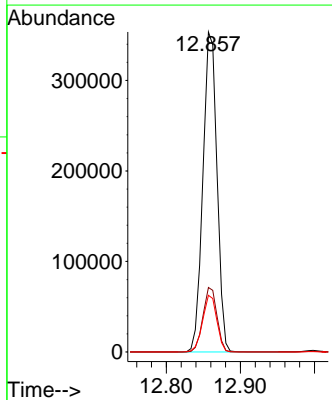
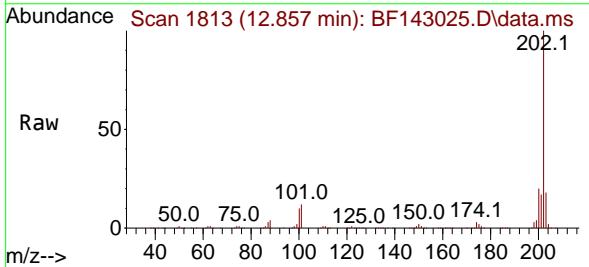
Ion	Ratio	Lower	Upper
184	100		
185	13.7	11.5	17.3
183	11.1	9.0	13.4

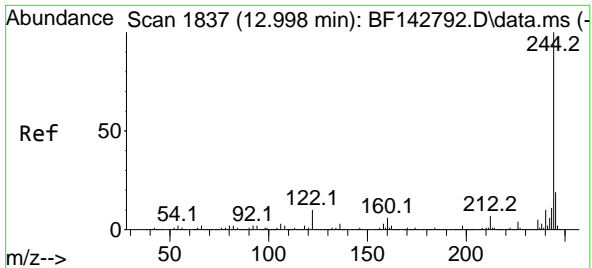


#78
 Pyrene
 Concen: 45.585 ng
 RT: 12.857 min Scan# 1813
 Delta R.T. 0.000 min
 Lab File: BF143025.D
 Acq: 08 Jul 2025 10:54

Tgt Ion:202 Resp: 467410

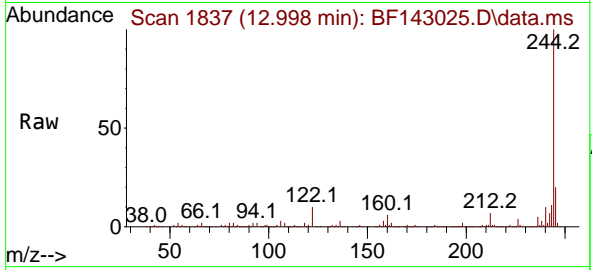
Ion	Ratio	Lower	Upper
202	100		
200	20.2	15.7	23.5
203	17.7	13.8	20.6





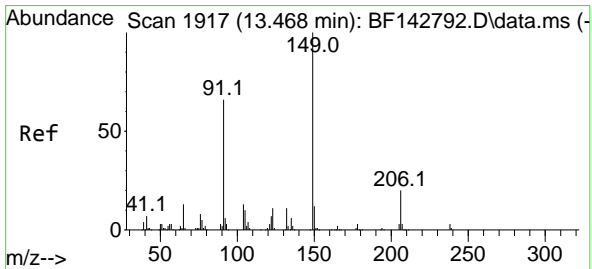
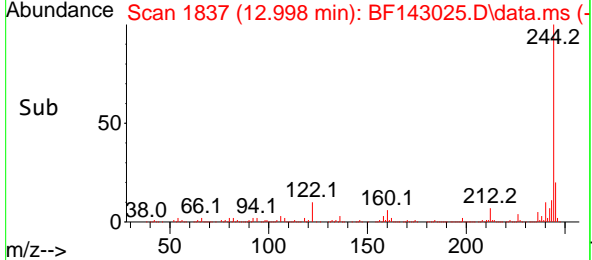
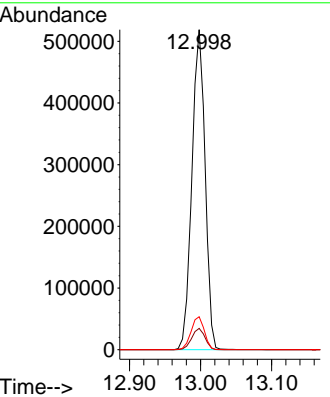
#79
 Terphenyl-d14
 Concen: 84.898 ng
 RT: 12.998 min Scan# 1837
 Delta R.T. -0.000 min
 Lab File: BF143025.D
 Acq: 08 Jul 2025 10:54

Instrument : BNA_F
 Client Sample Id : SSTDCCC040



Tgt Ion: 244 Resp: 672150

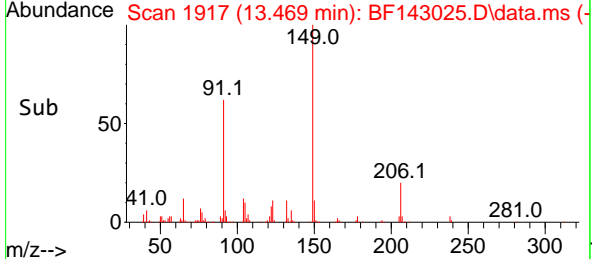
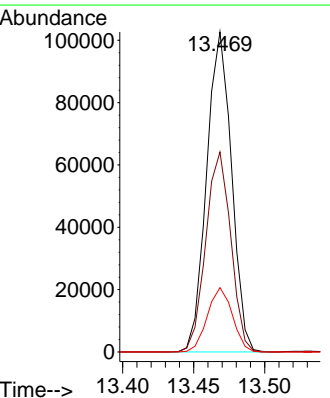
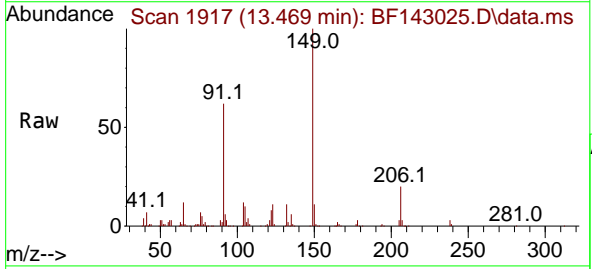
Ion	Ratio	Lower	Upper
244	100		
212	6.7	5.4	8.0
122	10.3	8.2	12.2

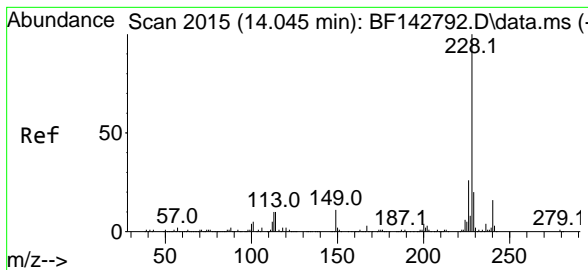


#80
 Butylbenzylphthalate
 Concen: 42.130 ng
 RT: 13.469 min Scan# 1917
 Delta R.T. 0.000 min
 Lab File: BF143025.D
 Acq: 08 Jul 2025 10:54

Tgt Ion: 149 Resp: 125308

Ion	Ratio	Lower	Upper
149	100		
91	62.5	52.9	79.3
206	20.1	16.3	24.5



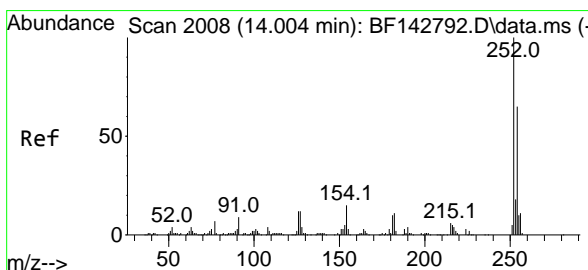
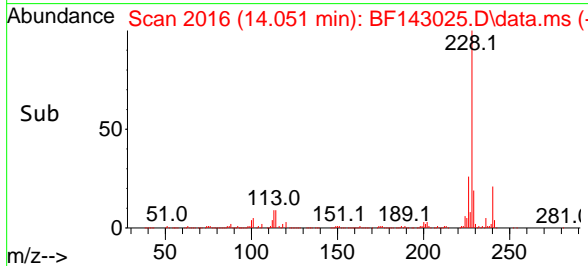
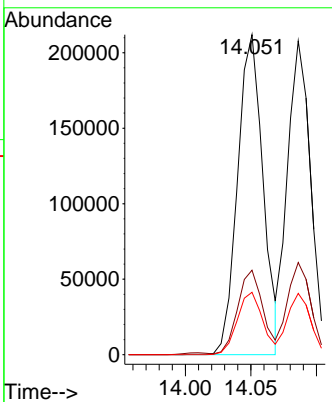
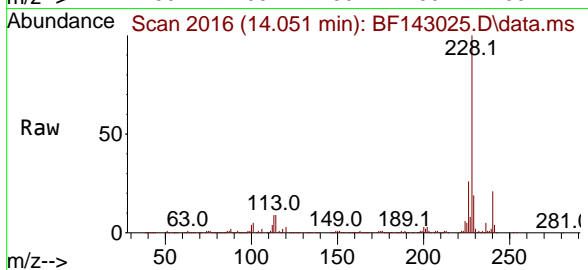


#81
 Benzo(a)anthracene
 Concen: 38.824 ng
 RT: 14.051 min Scan# 2015
 Delta R.T. 0.006 min
 Lab File: BF143025.D
 Acq: 08 Jul 2025 10:54

Instrument : BNA_F
 ClientSampleId : SSTDCCC040

Tgt Ion:228 Resp: 286505

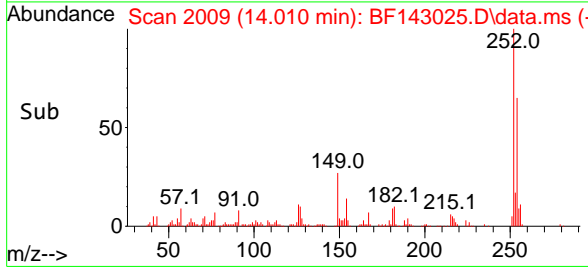
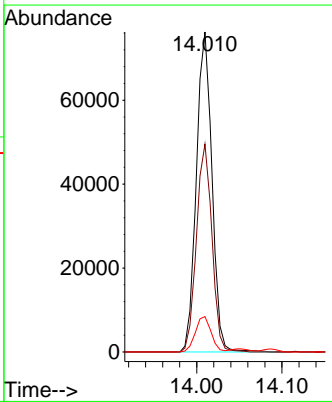
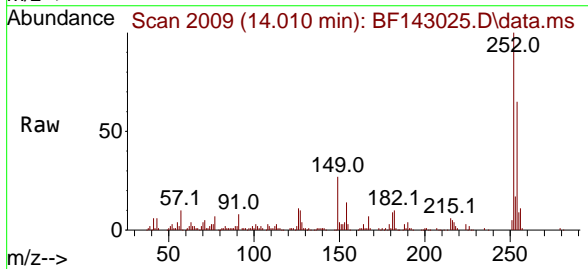
Ion	Ratio	Lower	Upper
228	100		
226	26.4	21.2	31.8
229	19.5	15.6	23.4

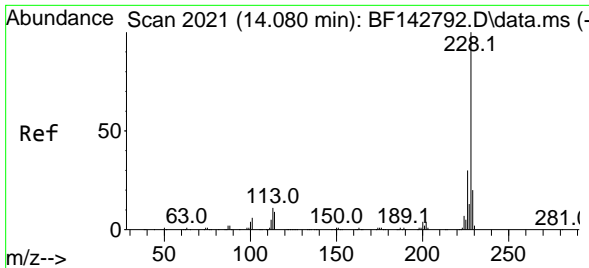


#82
 3,3'-Dichlorobenzidine
 Concen: 40.538 ng
 RT: 14.010 min Scan# 2009
 Delta R.T. 0.006 min
 Lab File: BF143025.D
 Acq: 08 Jul 2025 10:54

Tgt Ion:252 Resp: 97033

Ion	Ratio	Lower	Upper
252	100		
254	64.9	51.7	77.5
126	11.1	9.4	14.2

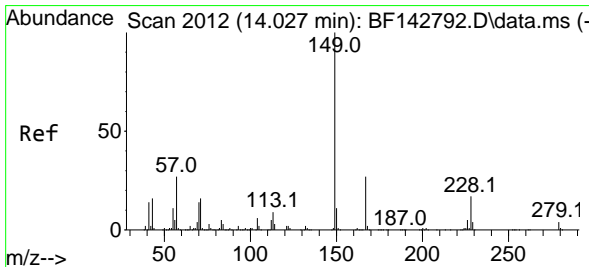
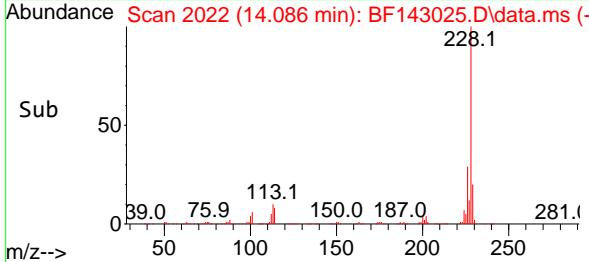
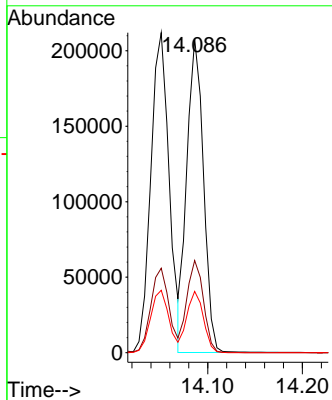
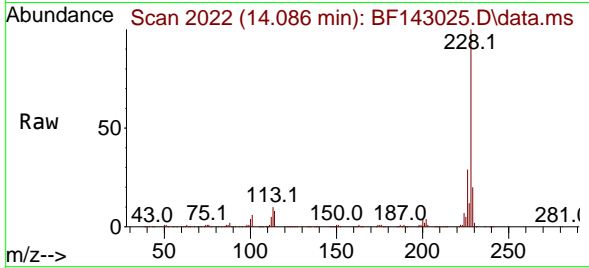




#83
 Chrysene
 Concen: 38.568 ng
 RT: 14.086 min Scan# 2022
 Delta R.T. 0.006 min
 Lab File: BF143025.D
 Acq: 08 Jul 2025 10:54

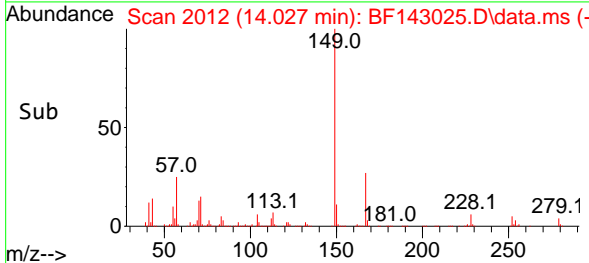
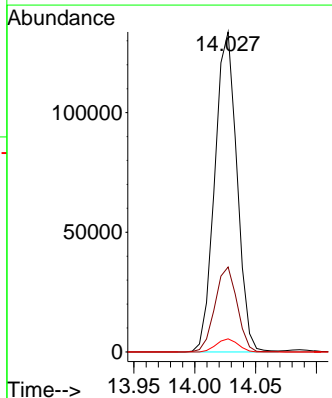
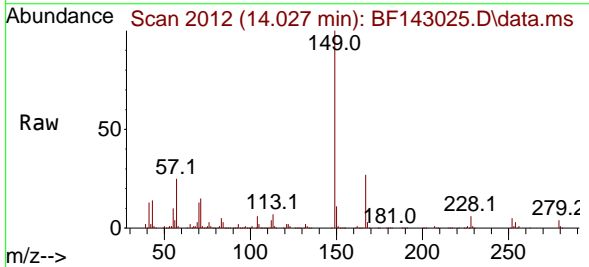
Instrument : BNA_F
 ClientSampleId : SSTDCCC040

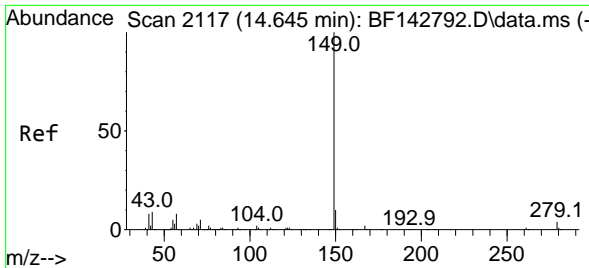
Tgt Ion:228 Resp: 253970
 Ion Ratio Lower Upper
 228 100
 226 29.4 23.7 35.5
 229 19.6 15.7 23.5



#84
 Bis(2-ethylhexyl)phthalate
 Concen: 39.625 ng
 RT: 14.027 min Scan# 2012
 Delta R.T. 0.000 min
 Lab File: BF143025.D
 Acq: 08 Jul 2025 10:54

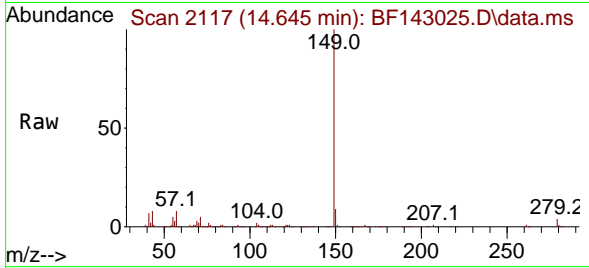
Tgt Ion:149 Resp: 169570
 Ion Ratio Lower Upper
 149 100
 167 26.6 21.4 32.0
 279 4.1 3.0 4.6



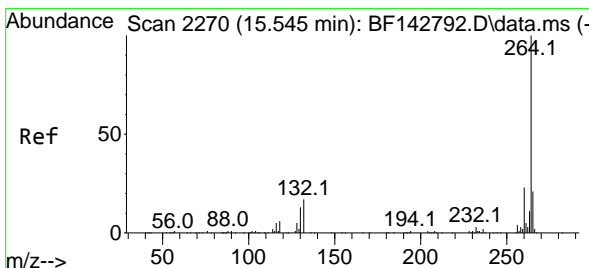
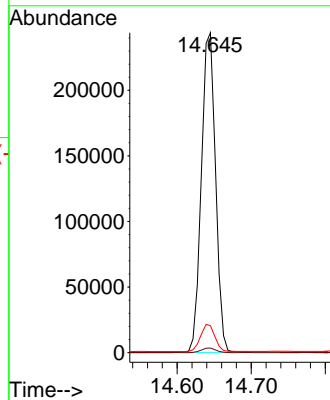
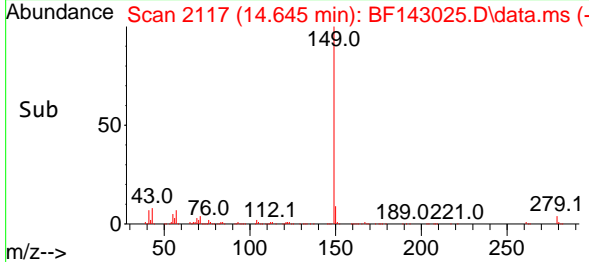


#85
 Di-n-octyl phthalate
 Concen: 40.101 ng
 RT: 14.645 min Scan# 2117
 Delta R.T. 0.000 min
 Lab File: BF143025.D
 Acq: 08 Jul 2025 10:54

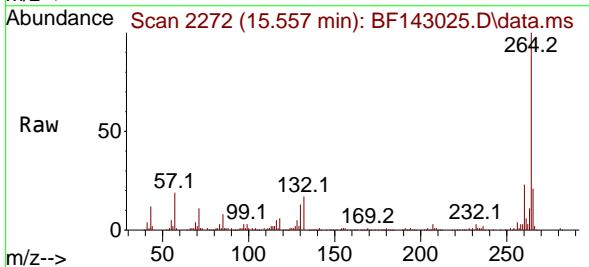
Instrument : BNA_F
 ClientSampleId : SSTDCCC040



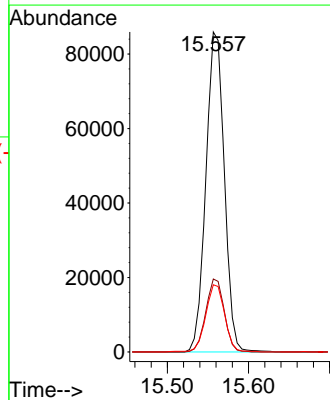
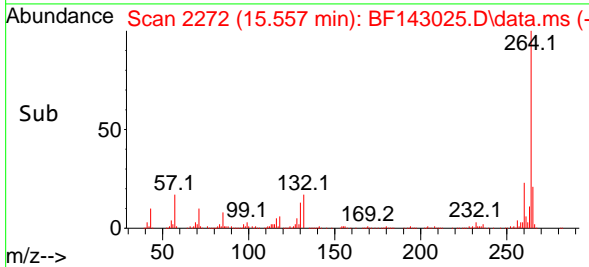
Tgt Ion:149 Resp: 323589
 Ion Ratio Lower Upper
 149 100
 167 1.5 1.3 1.9
 43 8.6 7.6 11.4

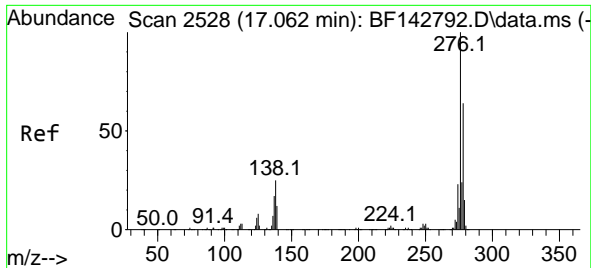


#86
 Perylene-d12
 Concen: 20.000 ng
 RT: 15.557 min Scan# 2272
 Delta R.T. 0.012 min
 Lab File: BF143025.D
 Acq: 08 Jul 2025 10:54



Tgt Ion:264 Resp: 135350
 Ion Ratio Lower Upper
 264 100
 260 22.8 18.1 27.1
 265 21.0 16.6 25.0



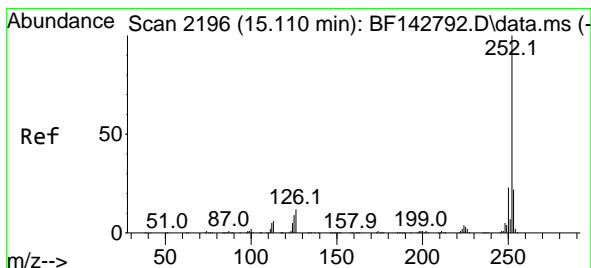
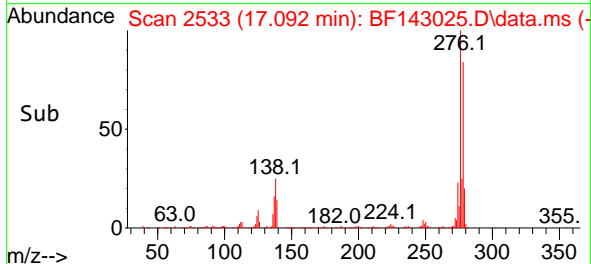
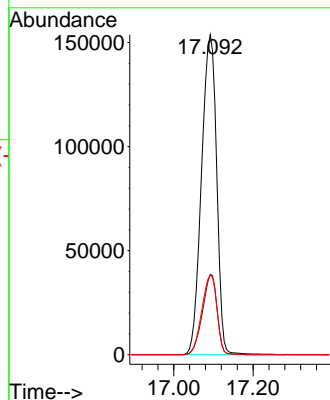
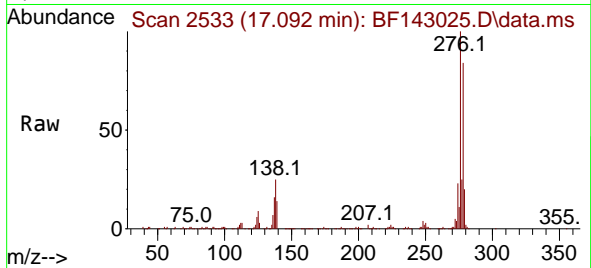


#87
 Indeno(1,2,3-cd)pyrene
 Concen: 39.633 ng
 RT: 17.092 min Scan# 2119
 Delta R.T. 0.030 min
 Lab File: BF143025.D
 Acq: 08 Jul 2025 10:54

Instrument : BNA_F
 ClientSampleId : SSTDCCC040

Tgt Ion: 276 Resp: 408600

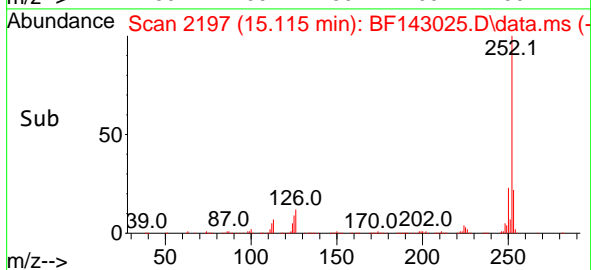
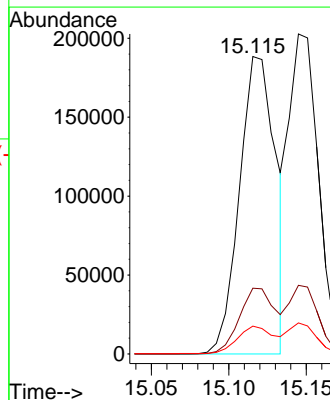
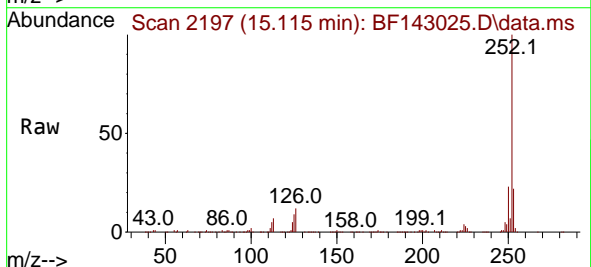
Ion	Ratio	Lower	Upper
276	100		
138	24.0	20.2	30.4
277	24.8	19.8	29.6

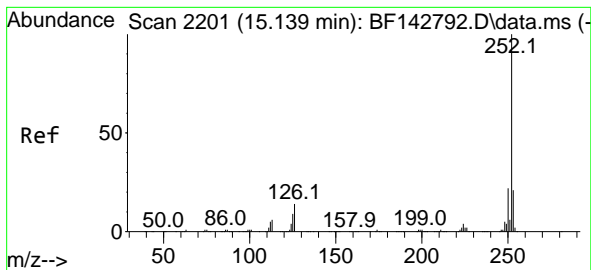


#88
 Benzo(b)fluoranthene
 Concen: 39.146 ng
 RT: 15.115 min Scan# 2197
 Delta R.T. 0.006 min
 Lab File: BF143025.D
 Acq: 08 Jul 2025 10:54

Tgt Ion: 252 Resp: 306592

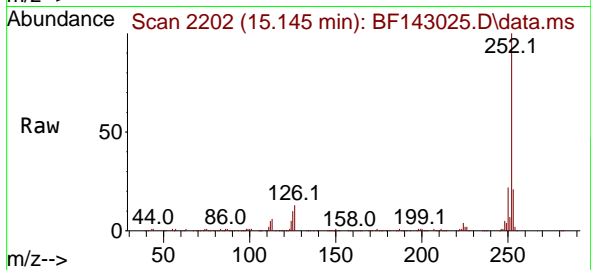
Ion	Ratio	Lower	Upper
252	100		
253	22.1	17.5	26.3
125	9.4	7.4	11.0



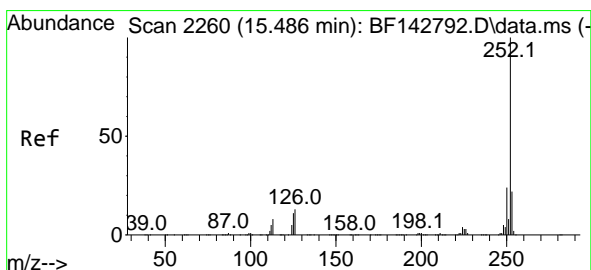
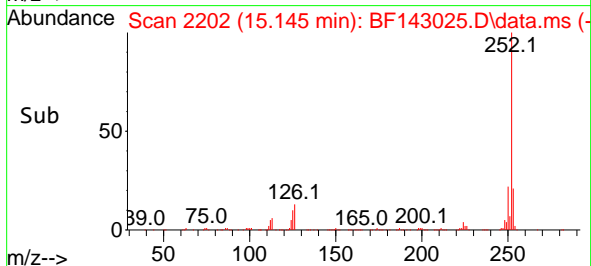
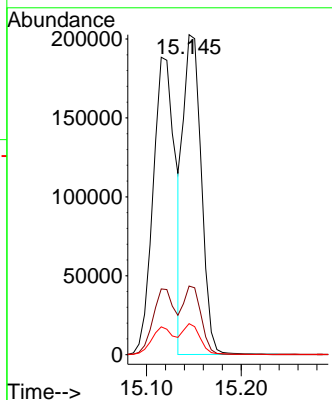


#89
 Benzo(k)fluoranthene
 Concen: 36.576 ng
 RT: 15.145 min Scan# 21
 Delta R.T. 0.006 min
 Lab File: BF143025.D
 Acq: 08 Jul 2025 10:54

Instrument :
 BNA_F
 ClientSampleId :
 SSTDCCC040

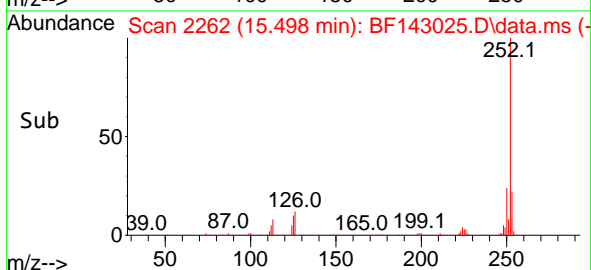
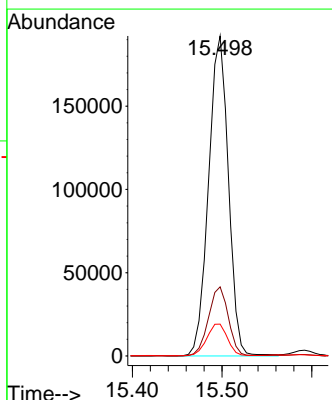
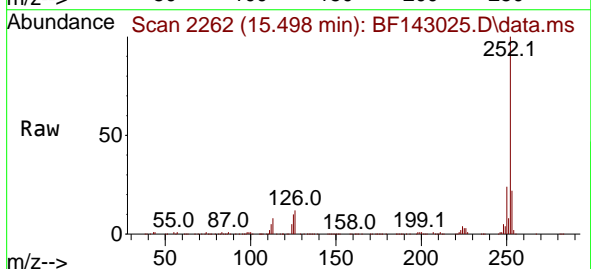


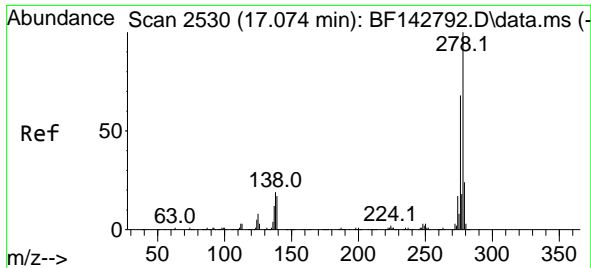
Tgt Ion:252 Resp: 268010
 Ion Ratio Lower Upper
 252 100
 253 21.4 17.2 25.8
 125 9.7 7.4 11.2



#90
 Benzo(a)pyrene
 Concen: 38.995 ng
 RT: 15.498 min Scan# 2262
 Delta R.T. 0.012 min
 Lab File: BF143025.D
 Acq: 08 Jul 2025 10:54

Tgt Ion:252 Resp: 295042
 Ion Ratio Lower Upper
 252 100
 253 21.6 17.5 26.3
 125 10.0 8.6 12.8

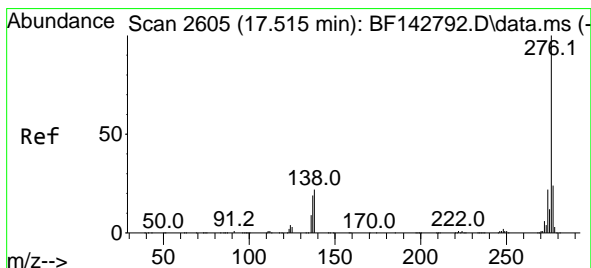
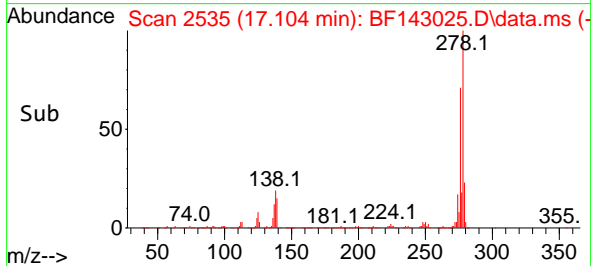
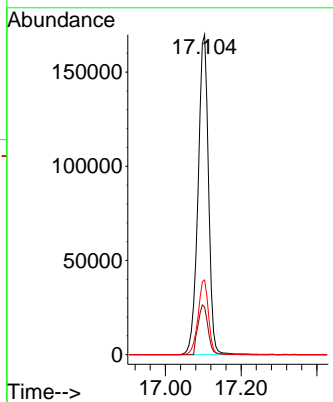
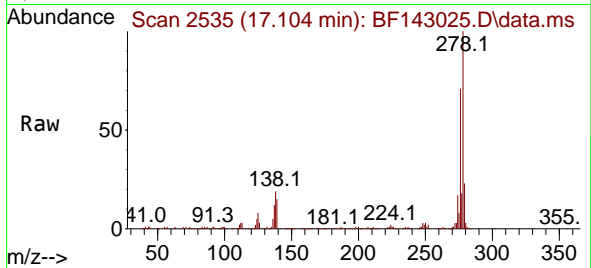




#91
 Dibenzo(a,h)anthracene
 Concen: 38.971 ng
 RT: 17.104 min Scan# 21
 Delta R.T. 0.030 min
 Lab File: BF143025.D
 Acq: 08 Jul 2025 10:54

Instrument :
 BNA_F
 ClientSampleId :
 SSTDCCC040

Tgt Ion:278 Resp: 326448
 Ion Ratio Lower Upper
 278 100
 139 14.8 13.5 20.3
 279 23.4 18.8 28.2



#92
 Benzo(g,h,i)perylene
 Concen: 38.829 ng
 RT: 17.551 min Scan# 2611
 Delta R.T. 0.035 min
 Lab File: BF143025.D
 Acq: 08 Jul 2025 10:54

Tgt Ion:276 Resp: 324337
 Ion Ratio Lower Upper
 276 100
 277 23.8 18.8 28.2
 138 20.5 17.6 26.4

