

Data Path : Z:\svoasrv\HPCHEM1\BNA_F\Data\BF070925\
 Data File : BF143048.D
 Acq On : 09 Jul 2025 10:52
 Operator : RC/JU
 Sample : SSTDCCC040
 Misc :
 ALS Vial : 2 Sample Multiplier: 1

Instrument :
 BNA_F
 ClientSampleId :
 SSTDCCC040

Quant Time: Jul 09 11:29:32 2025
 Quant Method : Z:\svoasrv\HPCHEM1\BNA_F\Methods\8270-BF061925.M
 Quant Title : ASP BNA STANDARDS FOR 5 POINT CALIBRATION
 QLast Update : Tue Jun 24 05:28:21 2025
 Response via : Initial Calibration

Compound	R.T.	QIon	Response	Conc	Units	Dev(Min)	
Internal Standards							
1) 1,4-Dichlorobenzene-d4	6.875	152	66592	20.000	ng	0.00	
21) Naphthalene-d8	8.157	136	257344	20.000	ng	-0.01	
39) Acenaphthene-d10	9.916	164	135062	20.000	ng	0.00	
64) Phenanthrene-d10	11.410	188	218580	20.000	ng	0.00	
76) Chrysene-d12	14.057	240	110392	20.000	ng	0.00	
86) Perylene-d12	15.545	264	146270	20.000	ng	0.00	
System Monitoring Compounds							
5) 2-Fluorophenol	5.493	112	317051	79.269	ng	0.00	
7) Phenol-d6	6.510	99	372531	78.945	ng	0.00	
23) Nitrobenzene-d5	7.439	82	394718	84.131	ng	0.00	
42) 2,4,6-Tribromophenol	10.710	330	109001	78.425	ng	0.00	
45) 2-Fluorobiphenyl	9.233	172	839846	81.687	ng	-0.01	
79) Terphenyl-d14	12.992	244	653929	81.848	ng	0.00	
Target Compounds							
2) 1,4-Dioxane	2.616	88	58700	36.693	ng		Qvalue 98
3) Pyridine	3.393	79	150140	37.436	ng		97
4) n-Nitrosodimethylamine	3.346	42	75767	36.533	ng		95
6) Aniline	6.540	93	243791	38.827	ng		95
8) 2-Chlorophenol	6.663	128	172216	39.915	ng		97
9) Benzaldehyde	6.428	77	122163	43.636	ng		100
10) Phenol	6.522	94	206185	39.308	ng		89
11) bis(2-Chloroethyl)ether	6.610	93	148192	39.529	ng		96
12) 1,3-Dichlorobenzene	6.816	146	189971	39.370	ng		100
13) 1,4-Dichlorobenzene	6.892	146	192448	39.530	ng		99
14) 1,2-Dichlorobenzene	7.045	146	182051	39.426	ng		99
15) Benzyl Alcohol	7.016	79	137398	40.276	ng		98
16) 2,2'-oxybis(1-Chloropr...	7.145	45	217844	36.167	ng		79
17) 2-Methylphenol	7.134	107	128959	39.442	ng		96
18) Hexachloroethane	7.387	117	67058	39.381	ng		93
19) n-Nitroso-di-n-propyla...	7.292	70	109039	39.730	ng		95
20) 3+4-Methylphenols	7.287	107	164907	40.452	ng		95
22) Acetophenone	7.287	105	223904	39.455	ng		100
24) Nitrobenzene	7.463	77	165163	38.894	ng		98
25) Isophorone	7.698	82	291150	38.685	ng		99
26) 2-Nitrophenol	7.775	139	92518	39.996	ng		100
27) 2,4-Dimethylphenol	7.816	122	146789	36.634	ng		99
28) bis(2-Chloroethoxy)met...	7.904	93	187275	39.139	ng		99
29) 2,4-Dichlorophenol	8.022	162	142368	39.186	ng		100
30) 1,2,4-Trichlorobenzene	8.098	180	155501	38.924	ng		99
31) Naphthalene	8.181	128	485090	38.510	ng		99
32) Benzoic acid	7.939	122	70188	34.368	ng		97
33) 4-Chloroaniline	8.234	127	198369	38.729	ng		98
34) Hexachlorobutadiene	8.292	225	96425	39.459	ng		99
35) Caprolactam	8.610	113	37672	39.295	ng		96
36) 4-Chloro-3-methylphenol	8.716	107	141216	39.110	ng		99
37) 2-Methylnaphthalene	8.869	142	307684	39.399	ng		99
38) 1-Methylnaphthalene	8.969	142	313072	38.726	ng		100
40) 1,2,4,5-Tetrachloroben...	9.039	216	154627	38.800	ng		99
41) Hexachlorocyclopentadiene	9.022	237	92207	40.772	ng		99
43) 2,4,6-Trichlorophenol	9.157	196	96292	37.080	ng		99

Data Path : Z:\svoasrv\HPCHEM1\BNA_F\Data\BF070925\
 Data File : BF143048.D
 Acq On : 09 Jul 2025 10:52
 Operator : RC/JU
 Sample : SSTDCCC040
 Misc :
 ALS Vial : 2 Sample Multiplier: 1

Instrument :
 BNA_F
 ClientSampleId :
 SSTDCCC040

Quant Time: Jul 09 11:29:32 2025
 Quant Method : Z:\svoasrv\HPCHEM1\BNA_F\Methods\8270-BF061925.M
 Quant Title : ASP BNA STANDARDS FOR 5 POINT CALIBRATION
 QLast Update : Tue Jun 24 05:28:21 2025
 Response via : Initial Calibration

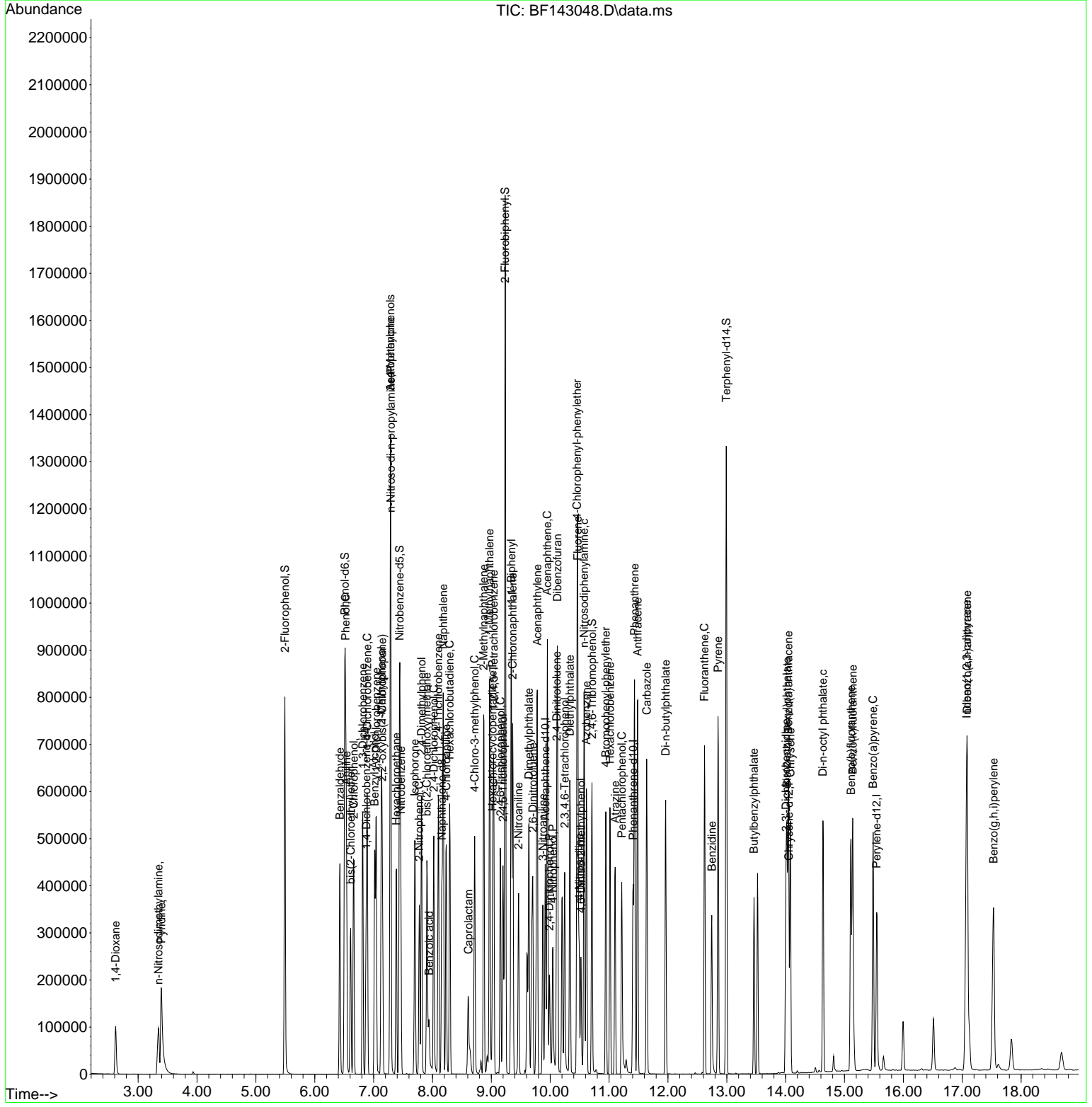
Compound	R.T.	QIon	Response	Conc	Units	Dev(Min)
44) 2,4,5-Trichlorophenol	9.198	196	102349	37.440	ng	100
46) 1,1'-Biphenyl	9.339	154	413921	38.796	ng	99
47) 2-Chloronaphthalene	9.363	162	306289	38.255	ng	99
48) 2-Nitroaniline	9.463	65	85518	38.099	ng	94
49) Acenaphthylene	9.781	152	503177	38.176	ng	100
50) Dimethylphthalate	9.639	163	342506	39.177	ng	100
51) 2,6-Dinitrotoluene	9.704	165	75838	39.500	ng	97
52) Acenaphthene	9.951	154	288736	35.905	ng	99
53) 3-Nitroaniline	9.875	138	78937	37.342	ng	100
54) 2,4-Dinitrophenol	9.986	184	46706	48.583	ng	99
55) Dibenzofuran	10.122	168	440391	38.190	ng	100
56) 4-Nitrophenol	10.045	139	67517	46.654	ng	99
57) 2,4-Dinitrotoluene	10.110	165	101213	39.687	ng	95
58) Fluorene	10.469	166	348917	38.743	ng	100
59) 2,3,4,6-Tetrachlorophenol	10.245	232	86032	39.043	ng	92
60) Diethylphthalate	10.333	149	332556	38.796	ng	100
61) 4-Chlorophenyl-phenyle...	10.457	204	167583	38.996	ng	98
62) 4-Nitroaniline	10.492	138	73117	37.820	ng	97
63) Azobenzene	10.616	77	291002	37.983	ng	98
65) 4,6-Dinitro-2-methylph...	10.522	198	51710	39.111	ng	97
66) n-Nitrosodiphenylamine	10.575	169	296265	39.109	ng	99
67) 4-Bromophenyl-phenylether	10.945	248	100240	40.295	ng	97
68) Hexachlorobenzene	11.016	284	109033	39.445	ng	99
69) Atrazine	11.104	200	78779	40.271	ng	98
70) Pentachlorophenol	11.216	266	79272	57.552	ng	99
71) Phenanthrene	11.433	178	453843	38.330	ng	100
72) Anthracene	11.486	178	465305	38.317	ng	99
73) Carbazole	11.639	167	392132	37.420	ng	100
74) Di-n-butylphthalate	11.963	149	430569	39.441	ng	99
75) Fluoranthene	12.621	202	408276	36.332	ng	100
77) Benzidine	12.745	184	204601	49.331	ng	99
78) Pyrene	12.851	202	454236	43.898	ng	99
80) Butylbenzylphthalate	13.463	149	126277	42.071	ng	97
81) Benzo(a)anthracene	14.045	228	292876	39.327	ng	99
82) 3,3'-Dichlorobenzidine	14.004	252	104231	43.151	ng	99
83) Chrysene	14.080	228	260242	39.162	ng	99
84) Bis(2-ethylhexyl)phtha...	14.021	149	194503	45.039	ng	99
85) Di-n-octyl phthalate	14.633	149	379015	46.544	ng	97
87) Indeno(1,2,3-cd)pyrene	17.074	276	424870	38.135	ng	99
88) Benzo(b)fluoranthene	15.110	252	321973	38.041	ng	100
89) Benzo(k)fluoranthene	15.139	252	309552	39.092	ng	99
90) Benzo(a)pyrene	15.486	252	317799	38.867	ng	99
91) Dibenzo(a,h)anthracene	17.086	278	345409	38.156	ng	98
92) Benzo(g,h,i)perylene	17.533	276	339644	37.626	ng	97

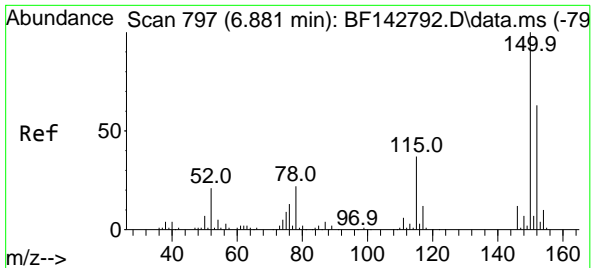
(#) = qualifier out of range (m) = manual integration (+) = signals summed

Data Path : Z:\svoasrv\HPCHEM1\BNA_F\Data\BF070925\
 Data File : BF143048.D
 Acq On : 09 Jul 2025 10:52
 Operator : RC/JU
 Sample : SSTDCCC040
 Misc :
 ALS Vial : 2 Sample Multiplier: 1

Instrument :
 BNA_F
 ClientSampleId :
 SSTDCCC040

Quant Time: Jul 09 11:29:32 2025
 Quant Method : Z:\svoasrv\HPCHEM1\BNA_F\Methods\8270-BF061925.M
 Quant Title : ASP BNA STANDARDS FOR 5 POINT CALIBRATION
 QLast Update : Tue Jun 24 05:28:21 2025
 Response via : Initial Calibration

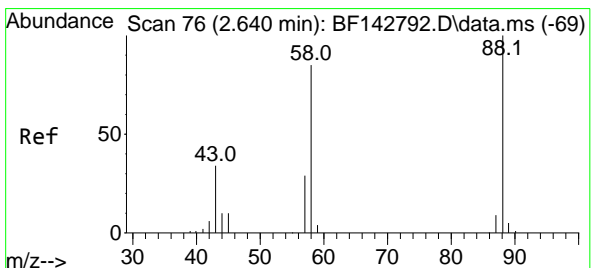
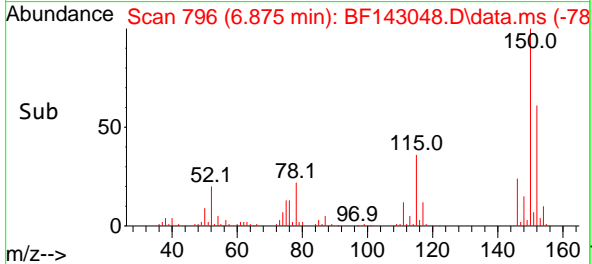
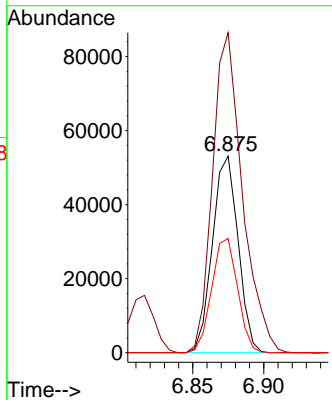
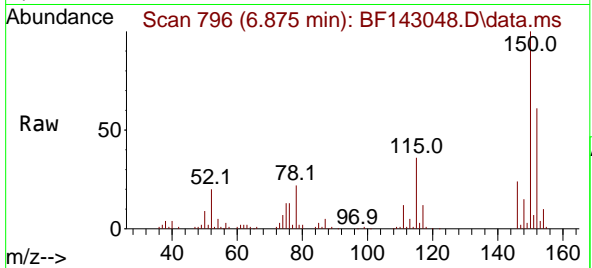




#1
 1,4-Dichlorobenzene-d4
 Concen: 20.000 ng
 RT: 6.875 min Scan# 79
 Delta R.T. -0.006 min
 Lab File: BF143048.D
 Acq: 09 Jul 2025 10:52

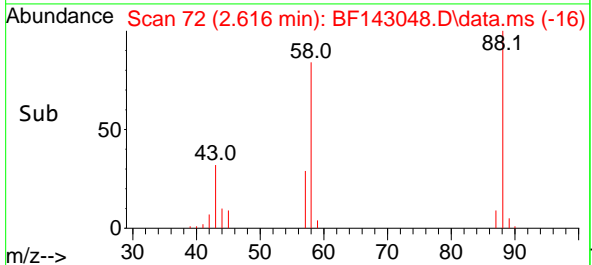
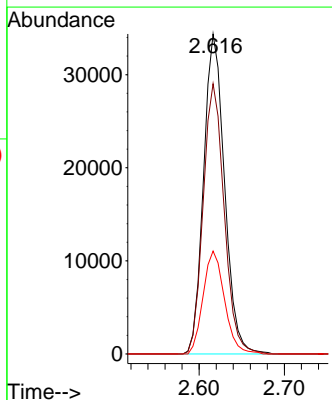
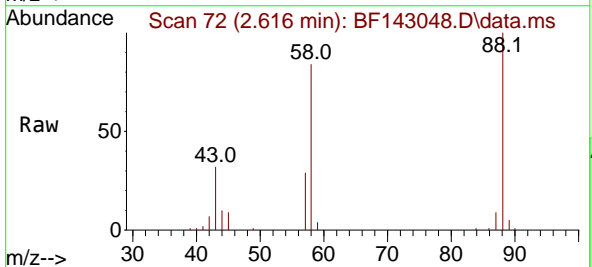
Instrument :
 BNA_F
 ClientSampleId :
 SSTDCCC040

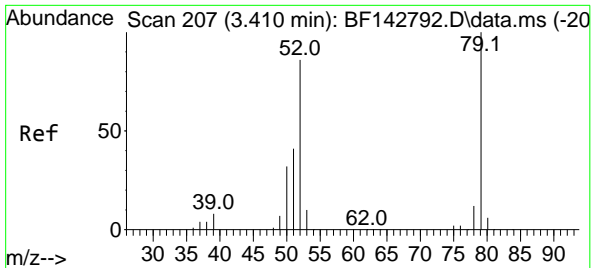
Tgt Ion:152 Resp: 66592
 Ion Ratio Lower Upper
 152 100
 150 162.8 127.2 190.8
 115 58.1 46.6 69.8



#2
 1,4-Dioxane
 Concen: 36.693 ng
 RT: 2.616 min Scan# 72
 Delta R.T. -0.023 min
 Lab File: BF143048.D
 Acq: 09 Jul 2025 10:52

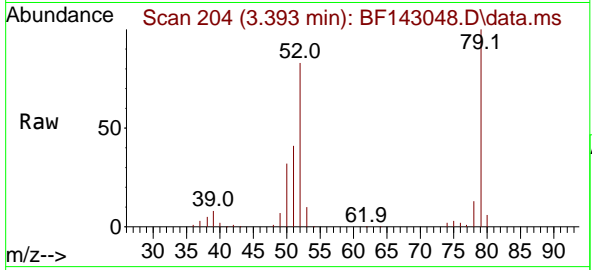
Tgt Ion: 88 Resp: 58700
 Ion Ratio Lower Upper
 88 100
 58 84.6 69.1 103.7
 43 32.8 27.4 41.2





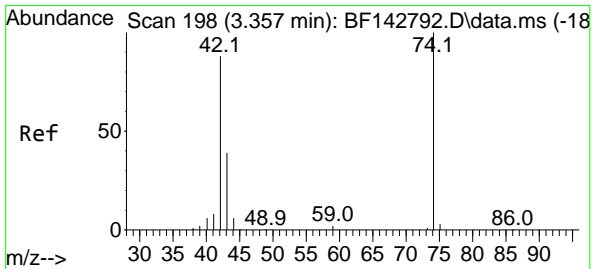
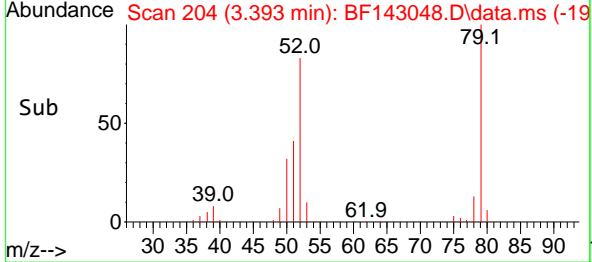
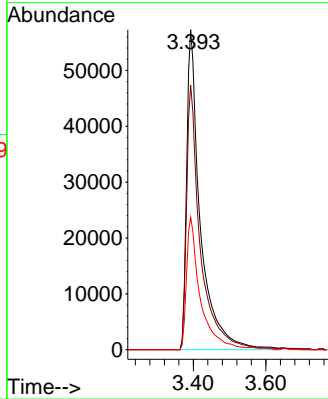
#3
 Pyridine
 Concen: 37.436 ng
 RT: 3.393 min Scan# 207
 Delta R.T. -0.018 min
 Lab File: BF143048.D
 Acq: 09 Jul 2025 10:52

Instrument :
 BNA_F
 ClientSampleId :
 SSTDCCC040



Tgt Ion: 79 Resp: 150140

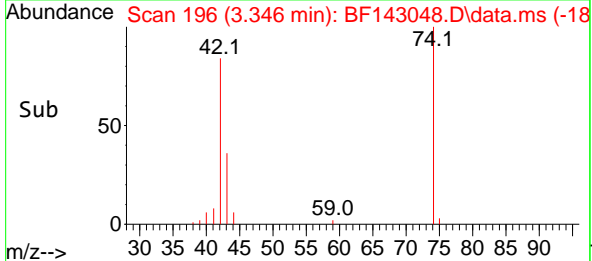
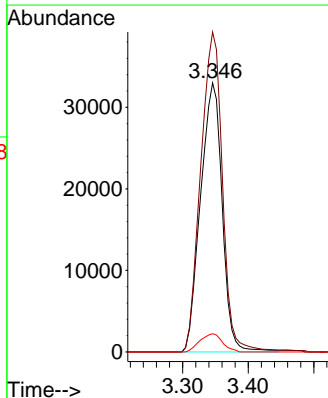
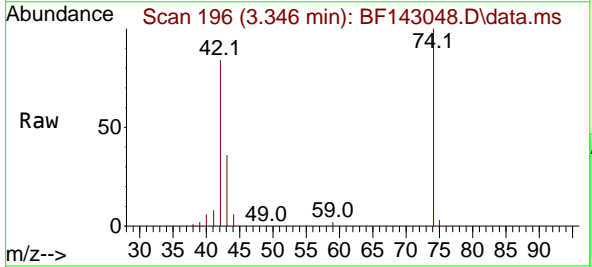
Ion	Ratio	Lower	Upper
79	100		
52	82.6	69.2	103.8
51	41.4	33.2	49.8

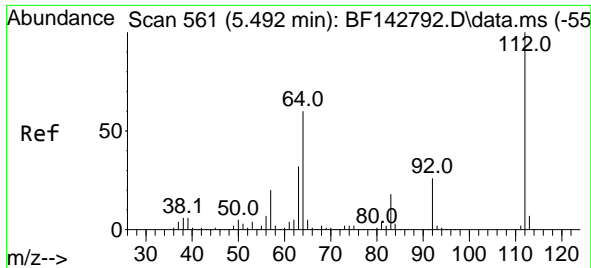


#4
 n-Nitrosodimethylamine
 Concen: 36.533 ng
 RT: 3.346 min Scan# 196
 Delta R.T. -0.012 min
 Lab File: BF143048.D
 Acq: 09 Jul 2025 10:52

Tgt Ion: 42 Resp: 75767

Ion	Ratio	Lower	Upper
42	100		
74	118.9	90.9	136.3
44	6.8	5.8	8.6



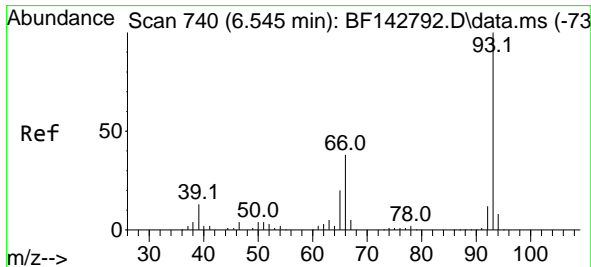
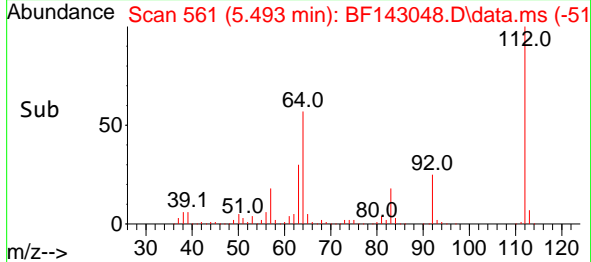
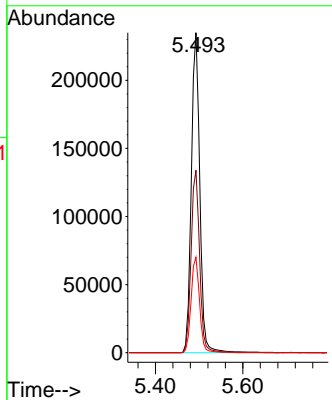
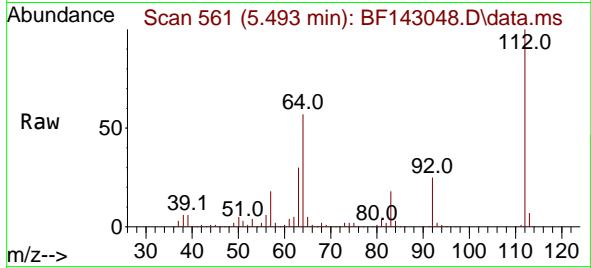


#5
 2-Fluorophenol
 Concen: 79.269 ng
 RT: 5.493 min Scan# 50
 Delta R.T. 0.001 min
 Lab File: BF143048.D
 Acq: 09 Jul 2025 10:52

Instrument :
 BNA_F
 ClientSampleId :
 SSTDCCC040

Tgt Ion: 112 Resp: 317051

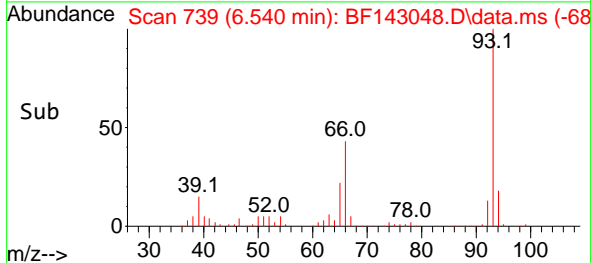
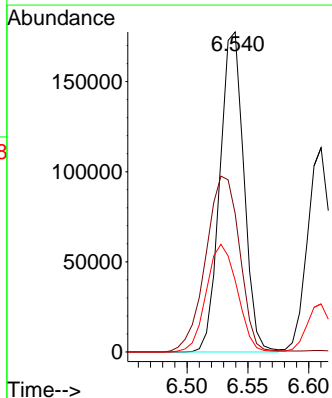
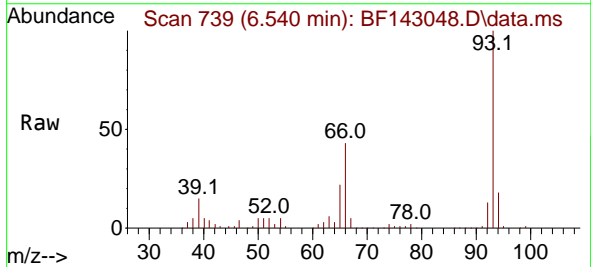
Ion	Ratio	Lower	Upper
112	100		
64	57.0	48.2	72.2
63	29.8	25.7	38.5

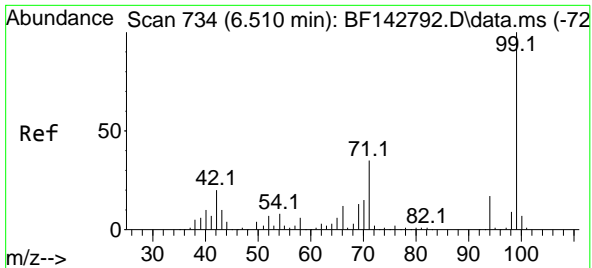


#6
 Aniline
 Concen: 38.827 ng
 RT: 6.540 min Scan# 739
 Delta R.T. -0.006 min
 Lab File: BF143048.D
 Acq: 09 Jul 2025 10:52

Tgt Ion: 93 Resp: 243791

Ion	Ratio	Lower	Upper
93	100		
66	43.2	31.8	47.6
65	22.3	16.2	24.2



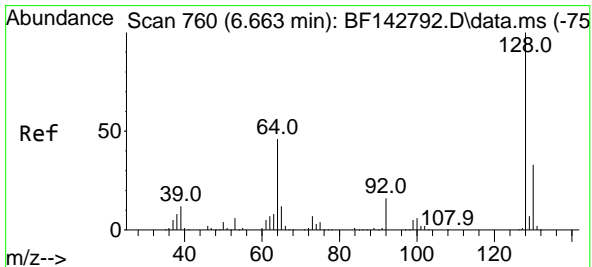
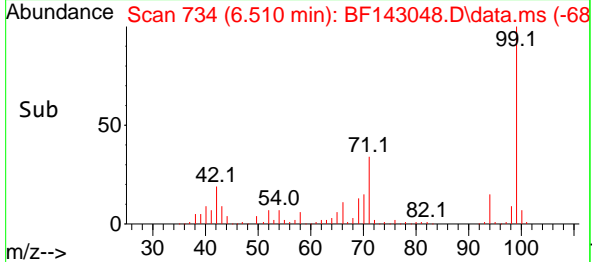
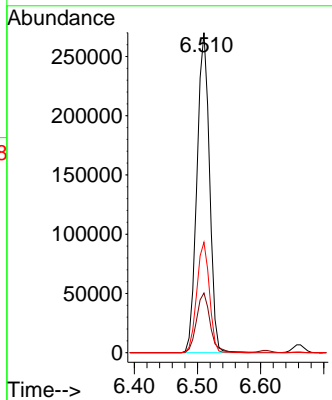
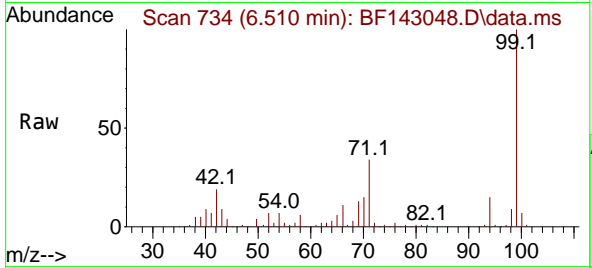


#7
 Phenol-d6
 Concen: 78.945 ng
 RT: 6.510 min Scan# 71
 Delta R.T. 0.000 min
 Lab File: BF143048.D
 Acq: 09 Jul 2025 10:52

Instrument : BNA_F
 ClientSampleId : SSTDCCC040

Tgt Ion: 99 Resp: 372531

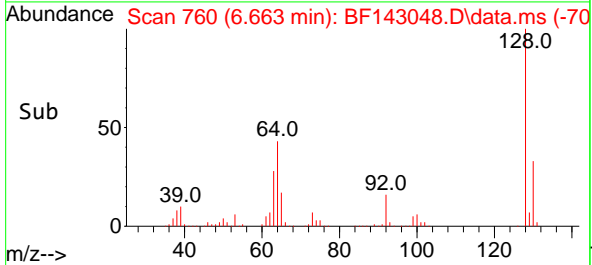
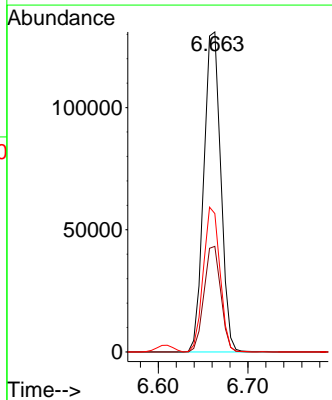
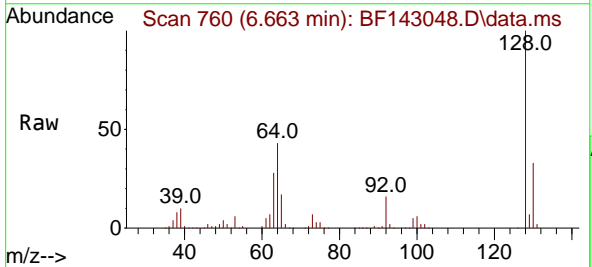
Ion	Ratio	Lower	Upper
99	100		
42	18.7	15.9	23.9
71	34.5	27.8	41.8

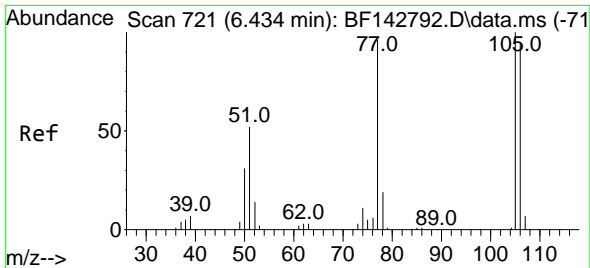


#8
 2-Chlorophenol
 Concen: 39.915 ng
 RT: 6.663 min Scan# 760
 Delta R.T. 0.000 min
 Lab File: BF143048.D
 Acq: 09 Jul 2025 10:52

Tgt Ion: 128 Resp: 172216

Ion	Ratio	Lower	Upper
128	100		
130	33.0	12.7	52.7
64	43.3	26.5	66.5

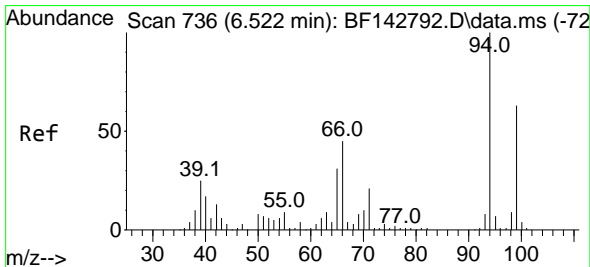
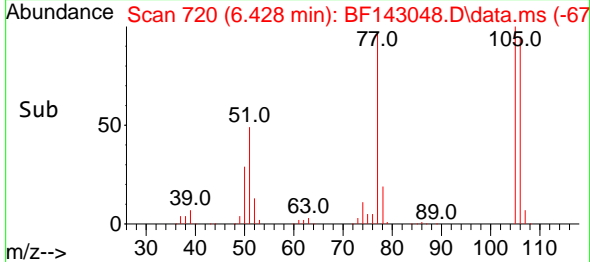
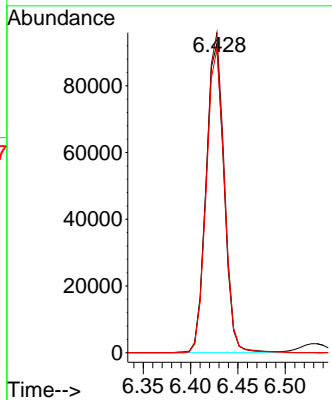
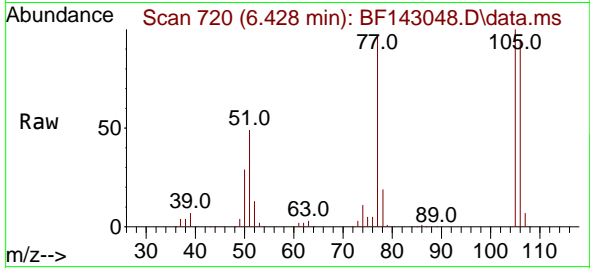




#9
 Benzaldehyde
 Concen: 43.636 ng
 RT: 6.428 min Scan# 721
 Delta R.T. -0.006 min
 Lab File: BF143048.D
 Acq: 09 Jul 2025 10:52

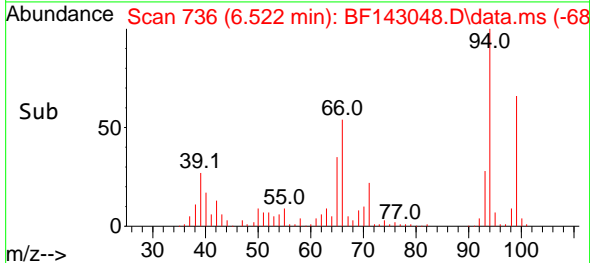
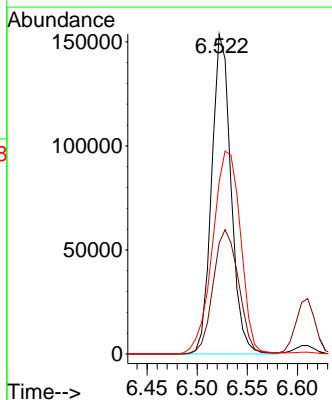
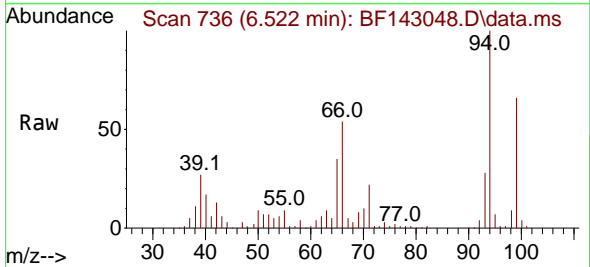
Instrument :
 BNA_F
 ClientSampleId :
 SSTDCCC040

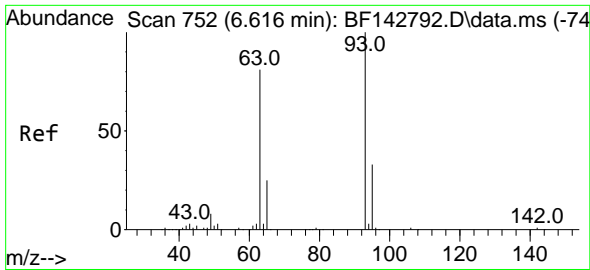
Tgt Ion: 77 Resp: 122163
 Ion Ratio Lower Upper
 77 100
 105 103.6 83.8 123.8
 106 98.2 78.7 118.7



#10
 Phenol
 Concen: 39.308 ng
 RT: 6.522 min Scan# 736
 Delta R.T. 0.000 min
 Lab File: BF143048.D
 Acq: 09 Jul 2025 10:52

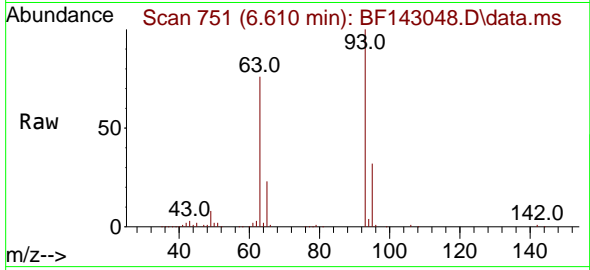
Tgt Ion: 94 Resp: 206185
 Ion Ratio Lower Upper
 94 100
 65 34.6 11.3 51.3
 66 53.8 24.9 64.9



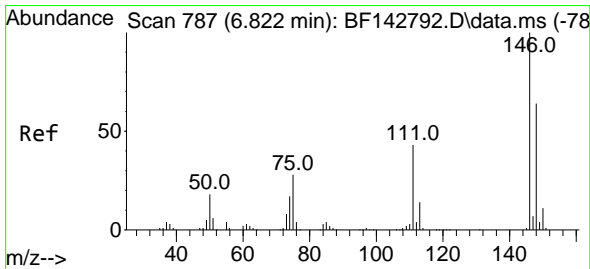
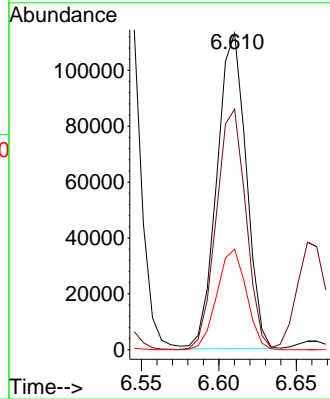
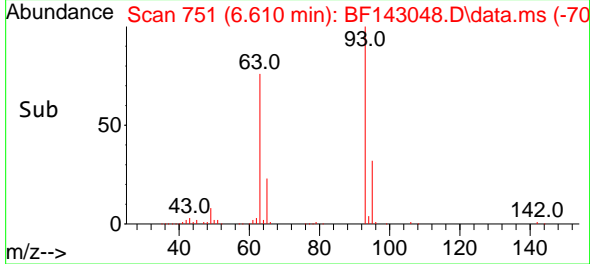


#11
 bis(2-Chloroethyl)ether
 Concen: 39.529 ng
 RT: 6.610 min Scan# 751
 Delta R.T. -0.006 min
 Lab File: BF143048.D
 Acq: 09 Jul 2025 10:52

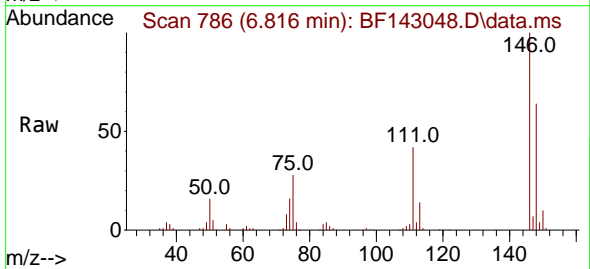
Instrument : BNA_F
 ClientSampleId : SSTDCCC040



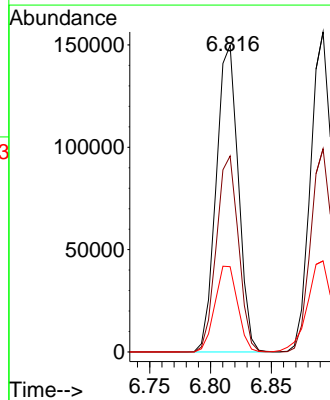
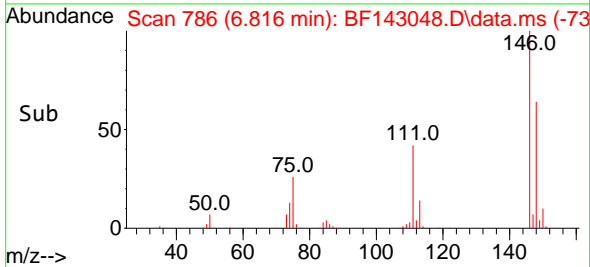
Tgt Ion: 93 Resp: 148192
 Ion Ratio Lower Upper
 93 100
 63 75.9 60.3 100.3
 95 31.7 12.5 52.5

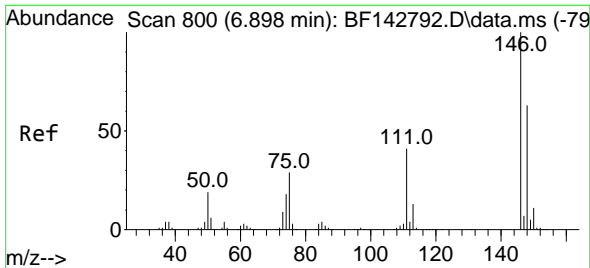


#12
 1,3-Dichlorobenzene
 Concen: 39.370 ng
 RT: 6.816 min Scan# 786
 Delta R.T. -0.006 min
 Lab File: BF143048.D
 Acq: 09 Jul 2025 10:52



Tgt Ion: 146 Resp: 189971
 Ion Ratio Lower Upper
 146 100
 148 63.9 51.1 76.7
 75 27.8 22.7 34.1

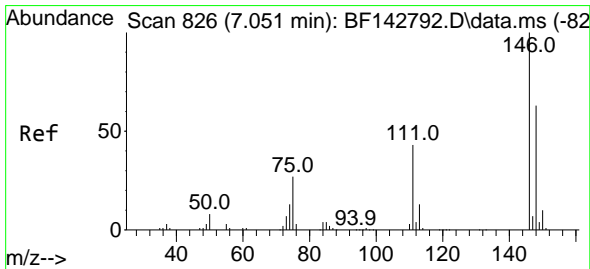
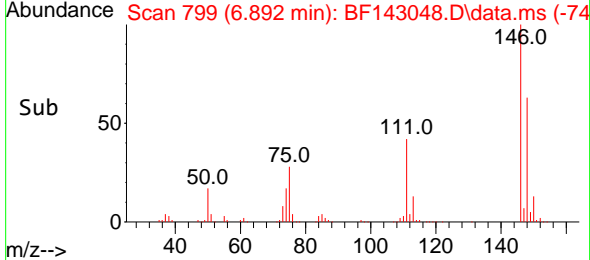
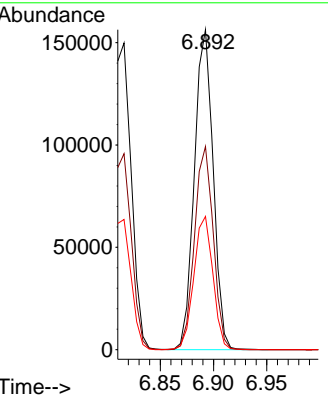
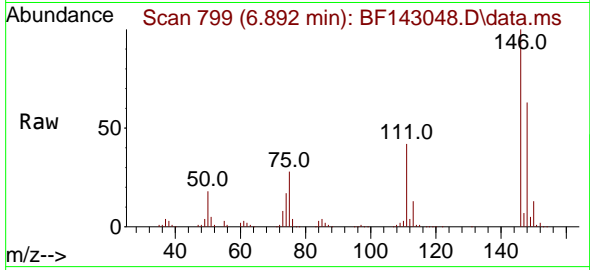




#13
 1,4-Dichlorobenzene
 Concen: 39.530 ng
 RT: 6.892 min Scan# 74
 Delta R.T. -0.006 min
 Lab File: BF143048.D
 Acq: 09 Jul 2025 10:52

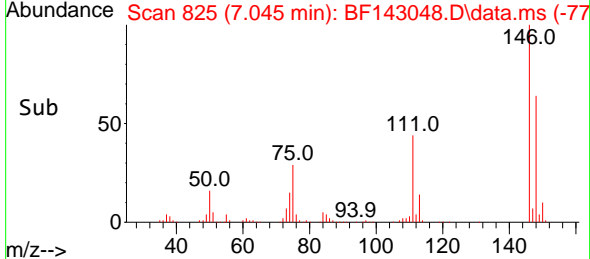
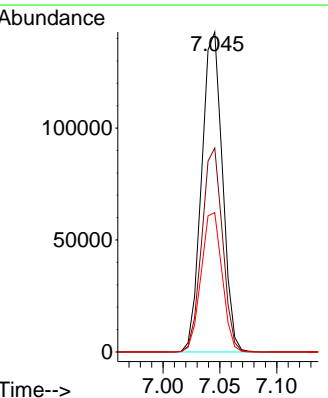
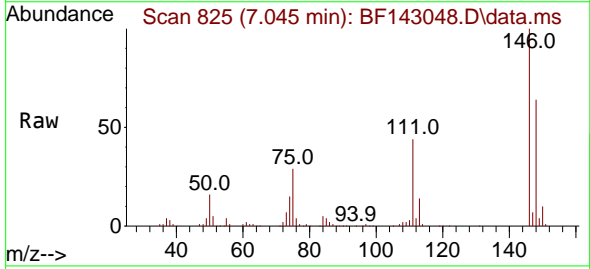
Instrument :
 BNA_F
 ClientSampleId :
 SSTDCCC040

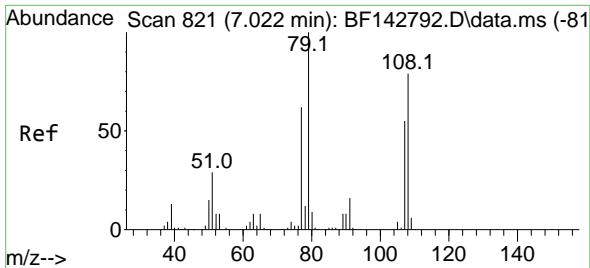
Tgt Ion:146 Resp: 192448
 Ion Ratio Lower Upper
 146 100
 148 63.5 50.2 75.2
 111 41.6 33.2 49.8



#14
 1,2-Dichlorobenzene
 Concen: 39.426 ng
 RT: 7.045 min Scan# 825
 Delta R.T. -0.006 min
 Lab File: BF143048.D
 Acq: 09 Jul 2025 10:52

Tgt Ion:146 Resp: 182051
 Ion Ratio Lower Upper
 146 100
 148 63.8 50.4 75.6
 111 43.6 34.1 51.1



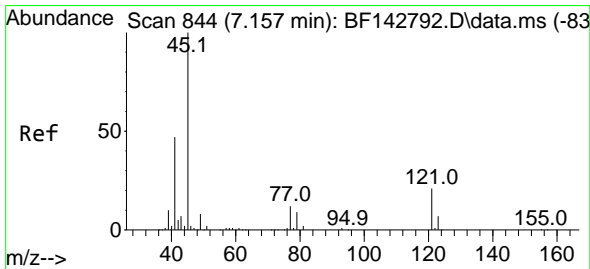
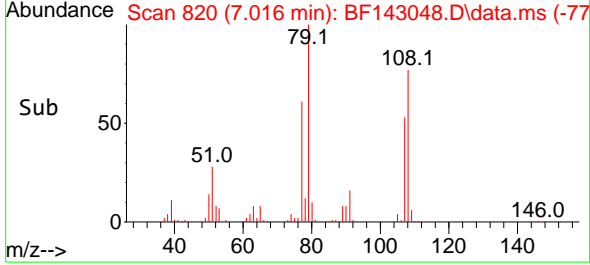
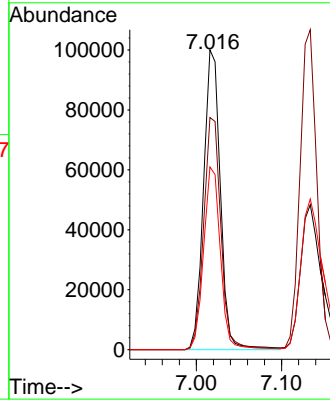
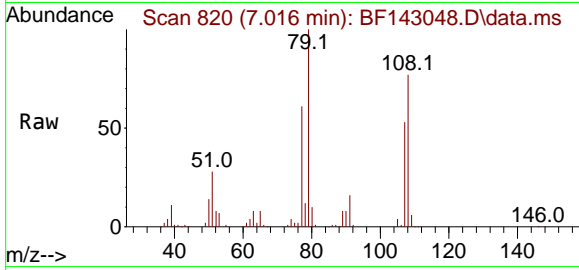


#15
 Benzyl Alcohol
 Concen: 40.276 ng
 RT: 7.016 min Scan# 81
 Delta R.T. -0.006 min
 Lab File: BF143048.D
 Acq: 09 Jul 2025 10:52

Instrument :
 BNA_F
 ClientSampleId :
 SSTDCCC040

Tgt Ion: 79 Resp: 137398

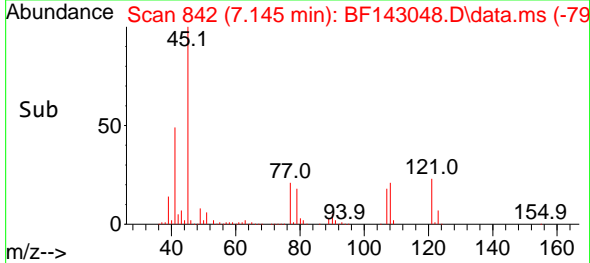
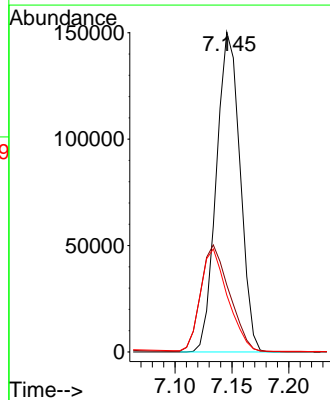
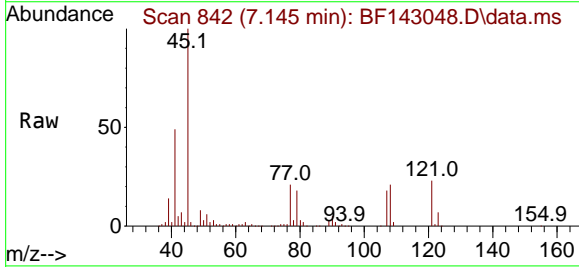
Ion	Ratio	Lower	Upper
79	100		
108	77.4	63.4	95.0
77	60.9	49.5	74.3

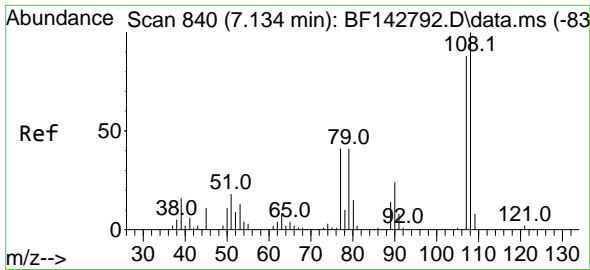


#16
 2,2'-oxybis(1-Chloropropane)
 Concen: 36.167 ng
 RT: 7.145 min Scan# 842
 Delta R.T. -0.012 min
 Lab File: BF143048.D
 Acq: 09 Jul 2025 10:52

Tgt Ion: 45 Resp: 217844

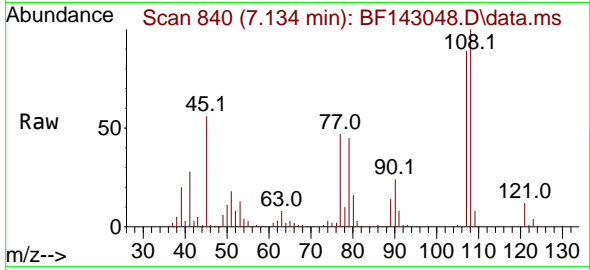
Ion	Ratio	Lower	Upper
45	100		
77	21.0	0.0	32.8
79	17.8	0.0	29.8



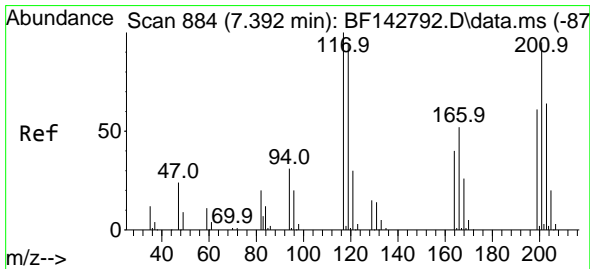
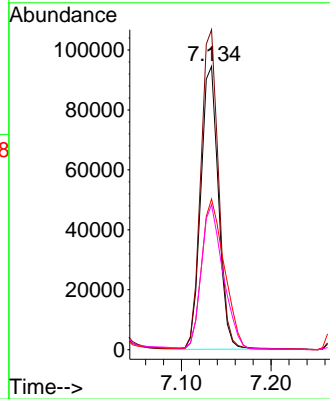
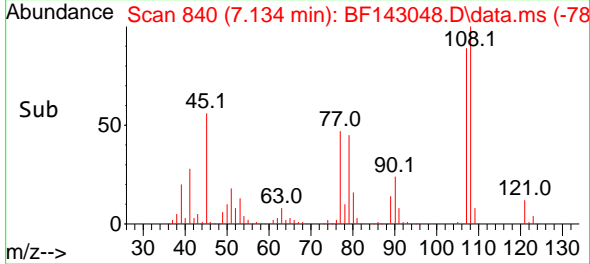


#17
 2-Methylphenol
 Concen: 39.442 ng
 RT: 7.134 min Scan# 840
 Delta R.T. 0.000 min
 Lab File: BF143048.D
 Acq: 09 Jul 2025 10:52

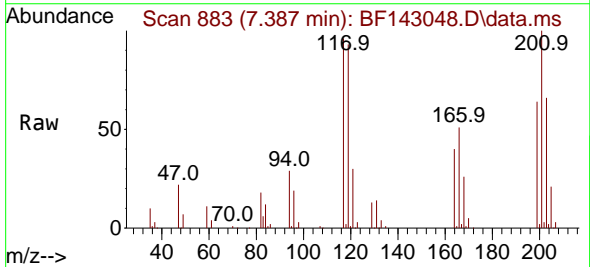
Instrument :
 BNA_F
 ClientSampleId :
 SSTDCCC040



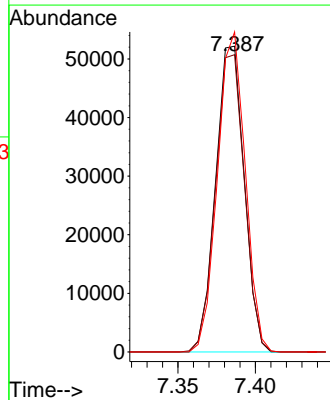
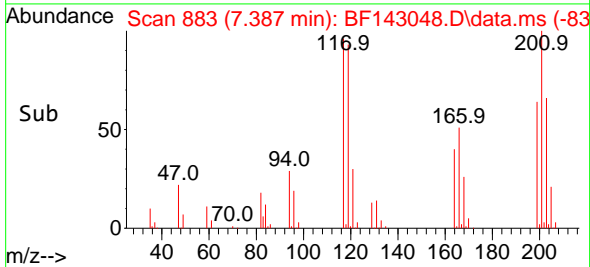
Tgt Ion:107 Resp: 128959
 Ion Ratio Lower Upper
 107 100
 108 112.9 90.9 136.3
 77 53.2 37.3 55.9
 79 51.2 37.2 55.8

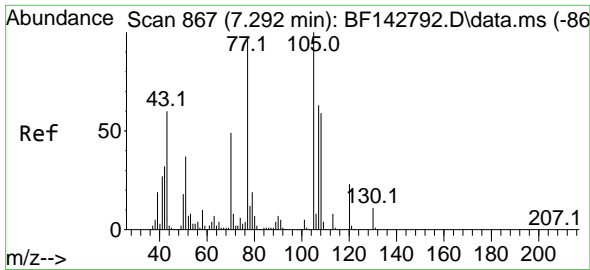


#18
 Hexachloroethane
 Concen: 39.381 ng
 RT: 7.387 min Scan# 883
 Delta R.T. -0.006 min
 Lab File: BF143048.D
 Acq: 09 Jul 2025 10:52



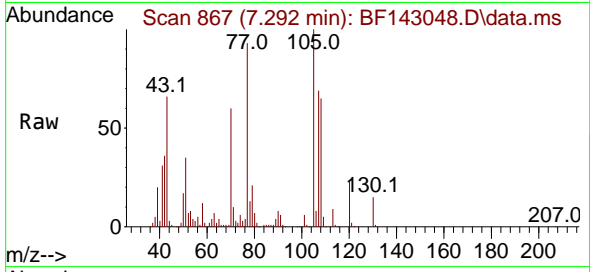
Tgt Ion:117 Resp: 67058
 Ion Ratio Lower Upper
 117 100
 119 97.2 75.4 113.0
 201 104.6 75.9 113.9



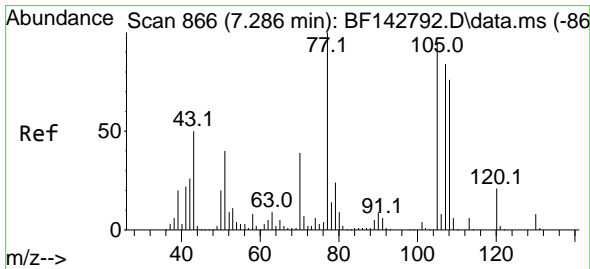
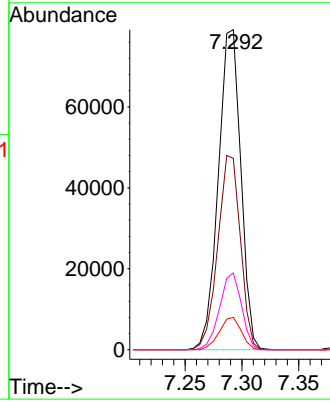
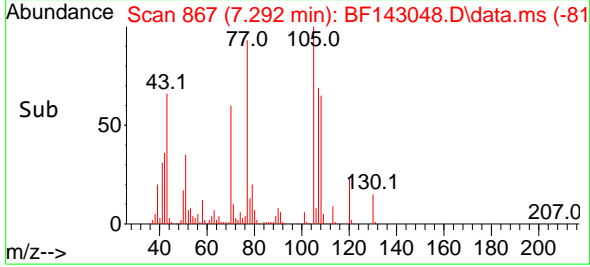


#19
 n-Nitroso-di-n-propylamine
 Concen: 39.730 ng
 RT: 7.292 min Scan# 80
 Delta R.T. 0.000 min
 Lab File: BF143048.D
 Acq: 09 Jul 2025 10:52

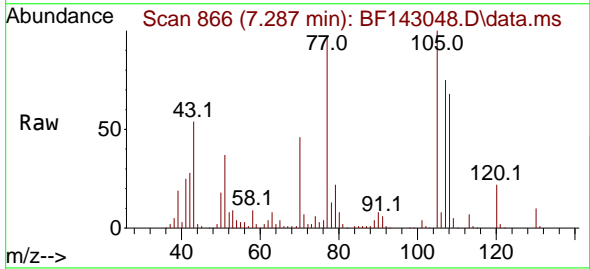
Instrument :
 BNA_F
 ClientSampleId :
 SSTDCCC040



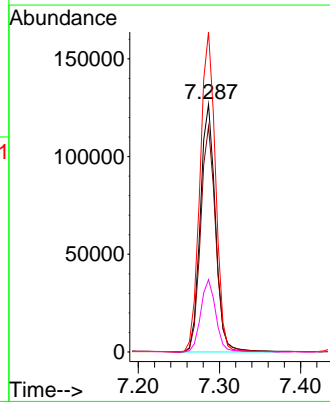
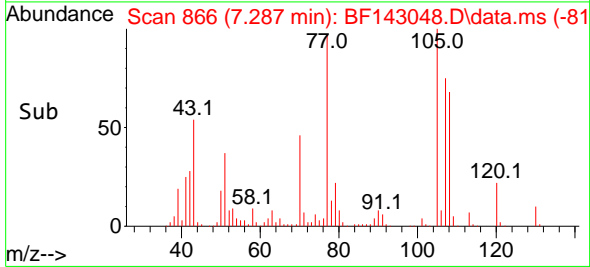
Tgt Ion: 70 Resp: 109039
 Ion Ratio Lower Upper
 70 100
 42 59.8 52.1 78.1
 101 10.1 8.2 12.2
 130 24.0 18.2 27.2

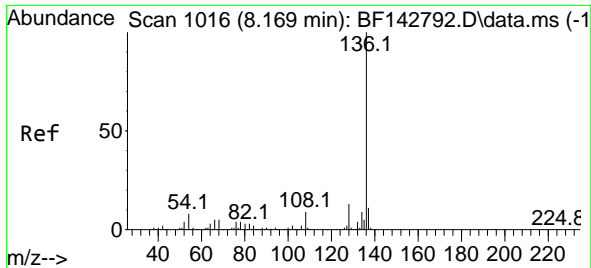


#20
 3+4-Methylphenols
 Concen: 40.452 ng
 RT: 7.287 min Scan# 866
 Delta R.T. 0.000 min
 Lab File: BF143048.D
 Acq: 09 Jul 2025 10:52



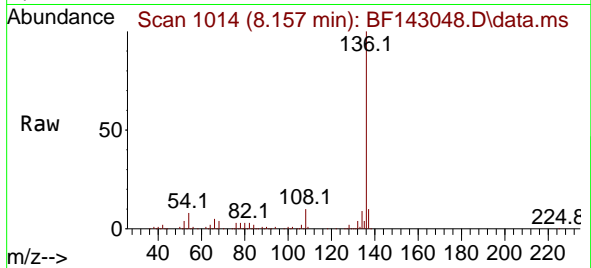
Tgt Ion: 107 Resp: 164907
 Ion Ratio Lower Upper
 107 100
 108 91.0 70.0 110.0
 77 129.2 98.5 138.5
 79 29.2 8.8 48.8





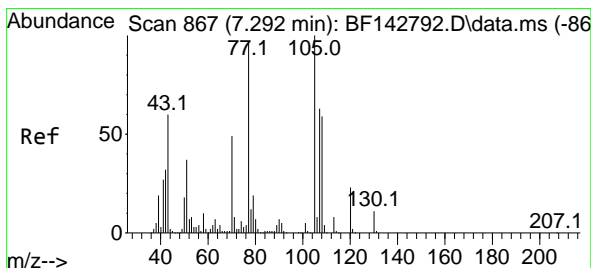
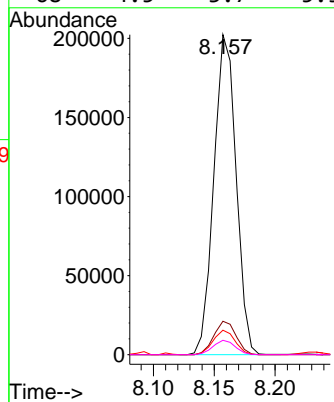
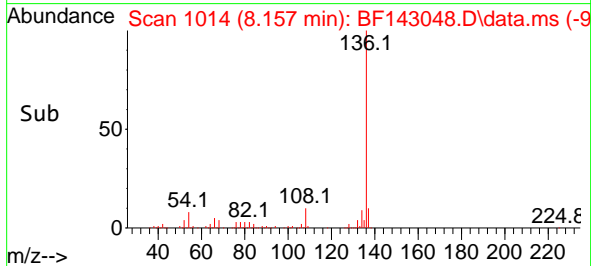
#21
 Naphthalene-d8
 Concen: 20.000 ng
 RT: 8.157 min Scan# 1014
 Delta R.T. -0.012 min
 Lab File: BF143048.D
 Acq: 09 Jul 2025 10:52

Instrument :
 BNA_F
 ClientSampleId :
 SSTDCCC040

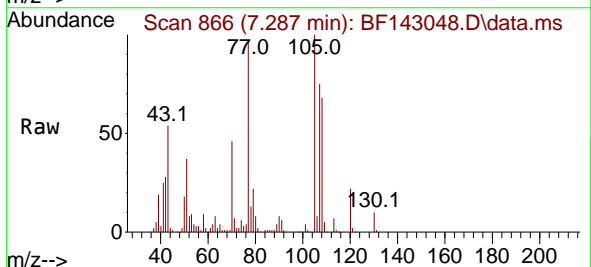


Tgt Ion:136 Resp: 257344

Ion	Ratio	Lower	Upper
136	100		
137	10.5	8.4	12.6
54	7.6	6.3	9.5
68	4.5	3.7	5.5

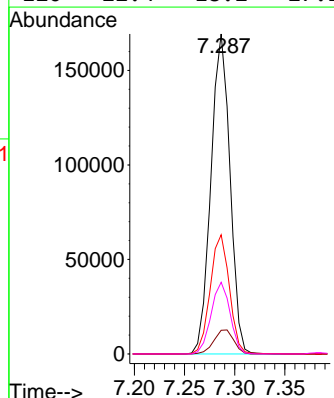
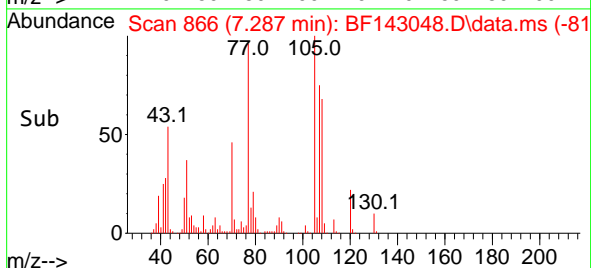


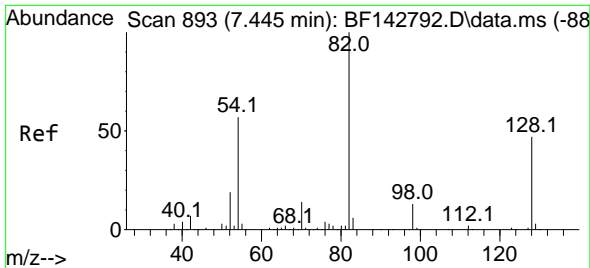
#22
 Acetophenone
 Concen: 39.455 ng
 RT: 7.287 min Scan# 866
 Delta R.T. -0.006 min
 Lab File: BF143048.D
 Acq: 09 Jul 2025 10:52



Tgt Ion:105 Resp: 223904

Ion	Ratio	Lower	Upper
105	100		
71	7.4	6.5	9.7
51	37.3	29.8	44.8
120	22.4	18.2	27.2





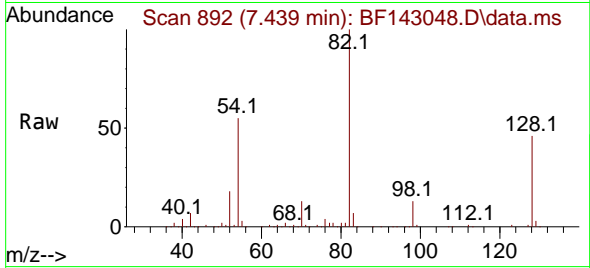
#23
 Nitrobenzene-d5
 Concen: 84.131 ng
 RT: 7.439 min Scan# 892
 Delta R.T. -0.006 min
 Lab File: BF143048.D
 Acq: 09 Jul 2025 10:52

Instrument :

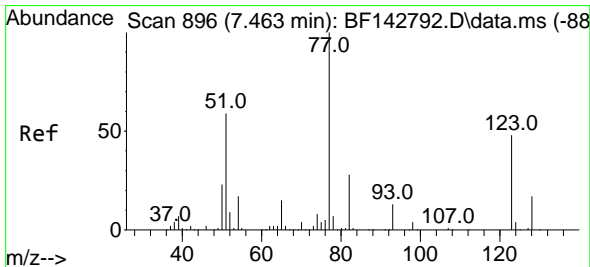
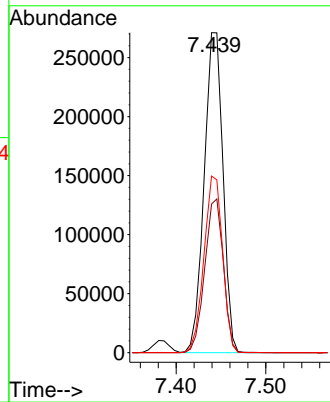
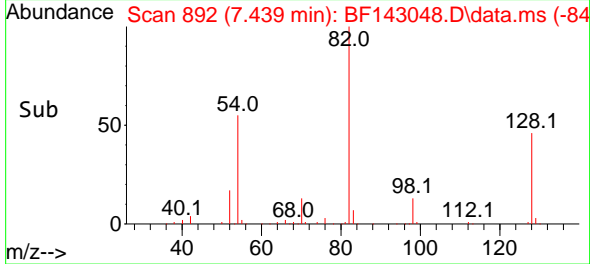
BNA_F

ClientSampleId :

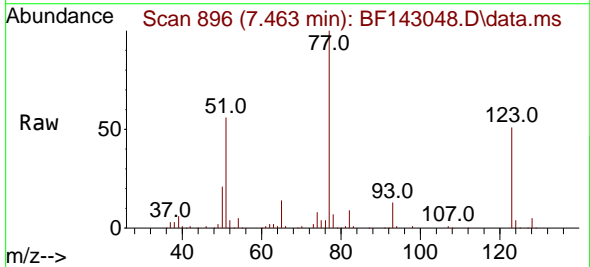
SSTDCCC040



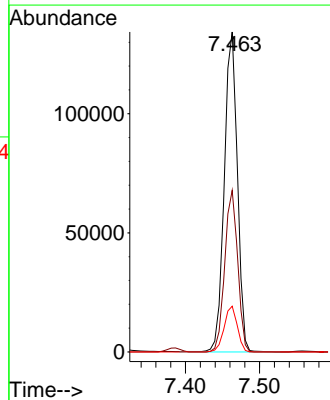
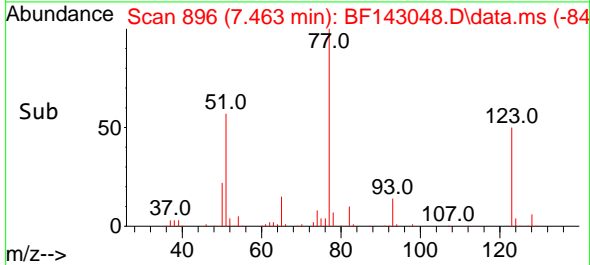
Tgt Ion: 82 Resp: 394718
 Ion Ratio Lower Upper
 82 100
 128 46.5 37.7 56.5
 54 55.2 45.7 68.5

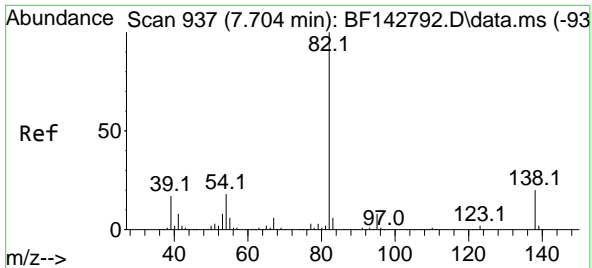


#24
 Nitrobenzene
 Concen: 38.894 ng
 RT: 7.463 min Scan# 896
 Delta R.T. 0.000 min
 Lab File: BF143048.D
 Acq: 09 Jul 2025 10:52



Tgt Ion: 77 Resp: 165163
 Ion Ratio Lower Upper
 77 100
 123 50.5 39.2 58.8
 65 14.3 11.6 17.4

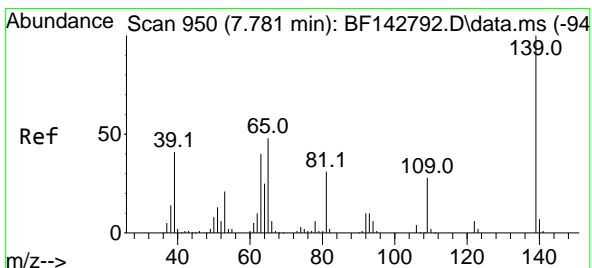
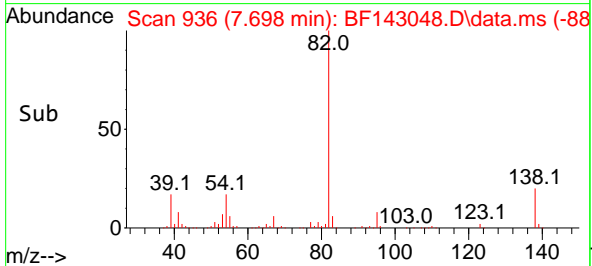
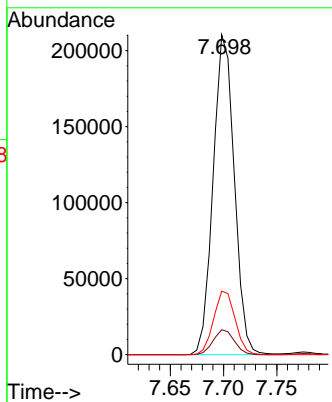
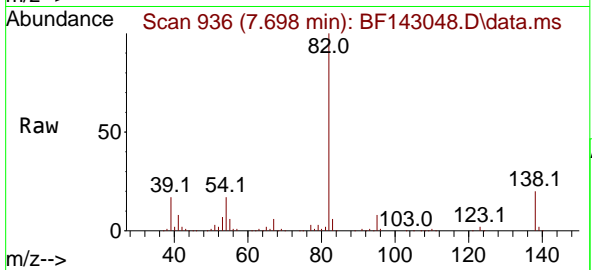




#25
 Isophorone
 Concen: 38.685 ng
 RT: 7.698 min Scan# 911
 Delta R.T. -0.006 min
 Lab File: BF143048.D
 Acq: 09 Jul 2025 10:52

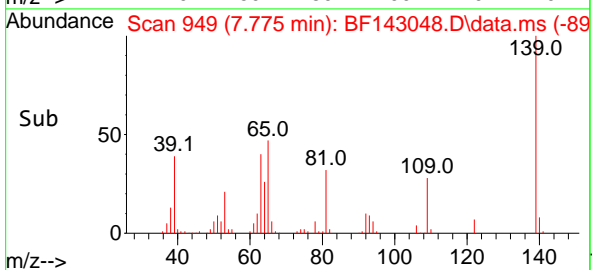
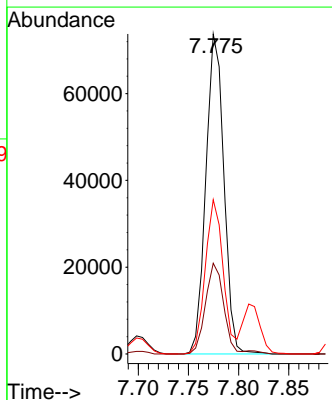
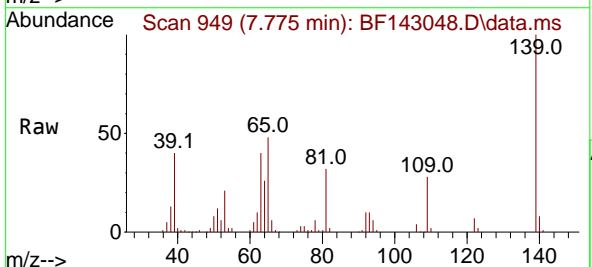
Instrument :
 BNA_F
 ClientSampleId :
 SSTDCCC040

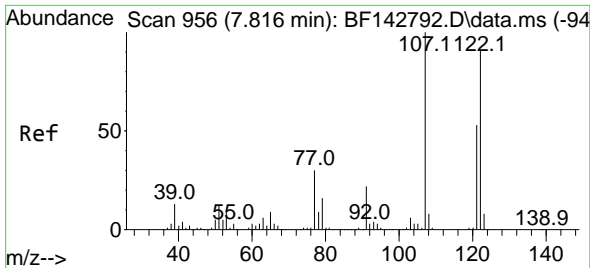
Tgt Ion: 82 Resp: 291150
 Ion Ratio Lower Upper
 82 100
 95 7.8 6.2 9.2
 138 19.9 16.2 24.4



#26
 2-Nitrophenol
 Concen: 39.996 ng
 RT: 7.775 min Scan# 949
 Delta R.T. -0.006 min
 Lab File: BF143048.D
 Acq: 09 Jul 2025 10:52

Tgt Ion:139 Resp: 92518
 Ion Ratio Lower Upper
 139 100
 109 28.3 22.7 34.1
 65 48.2 38.6 58.0



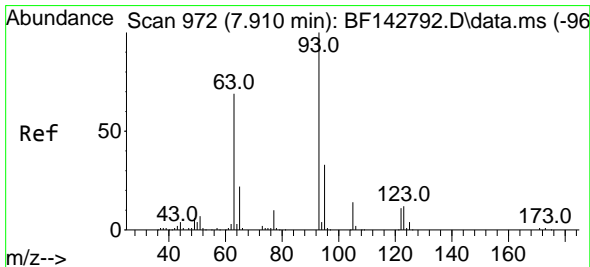
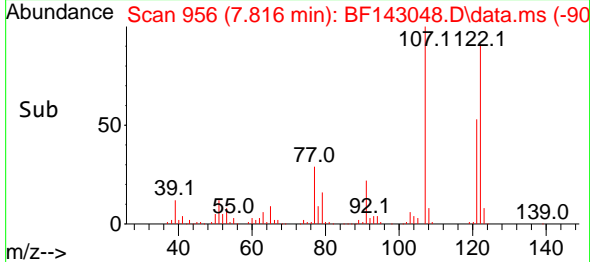
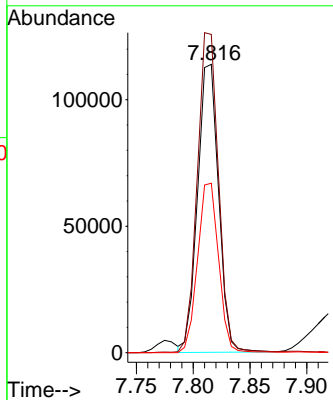
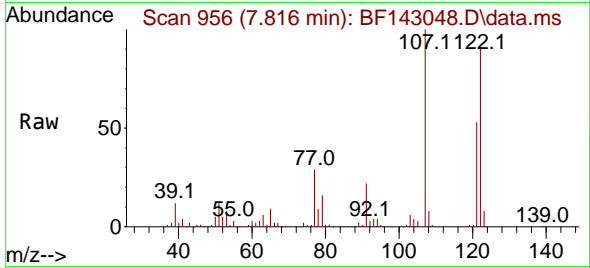


#27
 2,4-Dimethylphenol
 Concen: 36.634 ng
 RT: 7.816 min Scan# 911
 Delta R.T. 0.000 min
 Lab File: BF143048.D
 Acq: 09 Jul 2025 10:52

Instrument :
 BNA_F
 ClientSampleId :
 SSTDCCC040

Tgt Ion:122 Resp: 146789

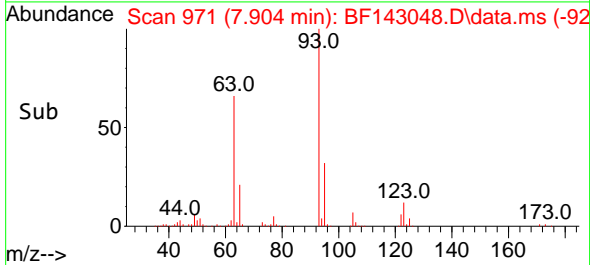
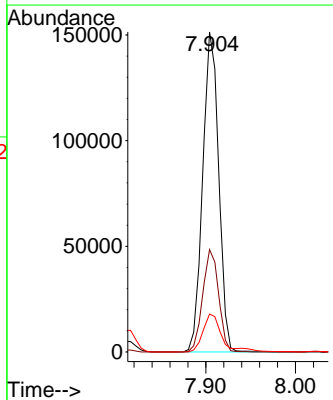
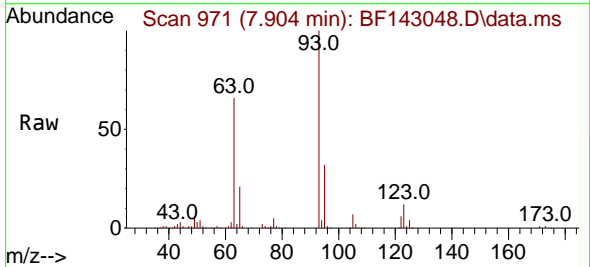
Ion	Ratio	Lower	Upper
122	100		
107	110.4	88.0	132.0
121	58.8	46.3	69.5

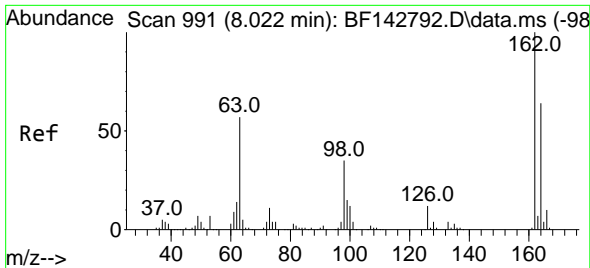


#28
 bis(2-Chloroethoxy)methane
 Concen: 39.139 ng
 RT: 7.904 min Scan# 971
 Delta R.T. -0.006 min
 Lab File: BF143048.D
 Acq: 09 Jul 2025 10:52

Tgt Ion: 93 Resp: 187275

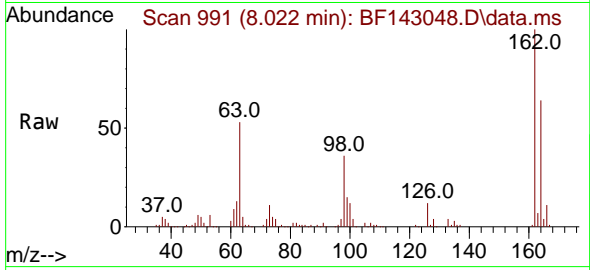
Ion	Ratio	Lower	Upper
93	100		
95	32.0	26.2	39.2
123	11.8	9.9	14.9



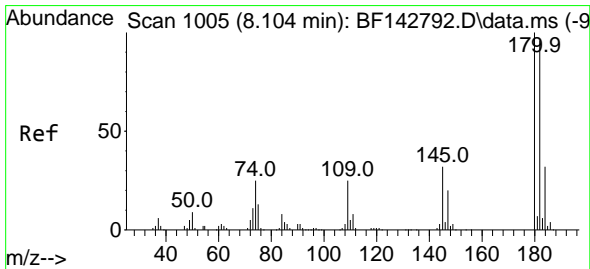
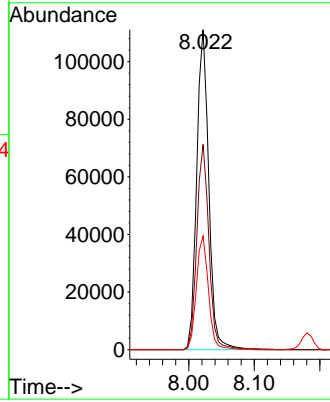
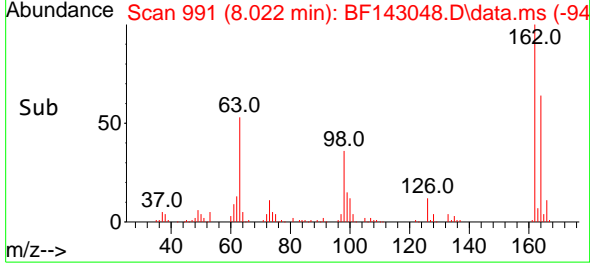


#29
 2,4-Dichlorophenol
 Concen: 39.186 ng
 RT: 8.022 min Scan# 991
 Delta R.T. 0.000 min
 Lab File: BF143048.D
 Acq: 09 Jul 2025 10:52

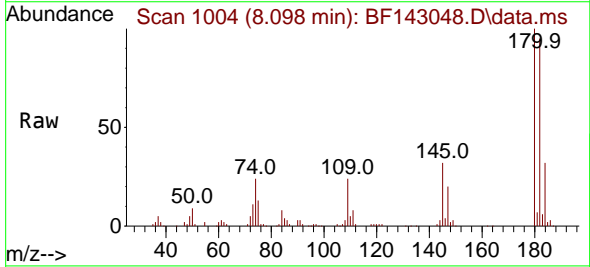
Instrument : BNA_F
 ClientSampleId : SSTDCCC040



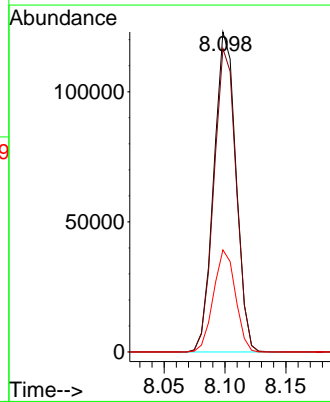
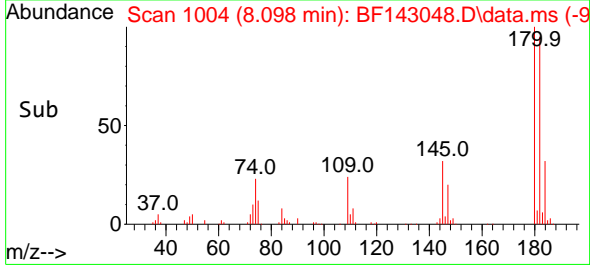
Tgt Ion:162 Resp: 142368
 Ion Ratio Lower Upper
 162 100
 164 64.1 44.0 84.0
 98 35.5 15.4 55.4

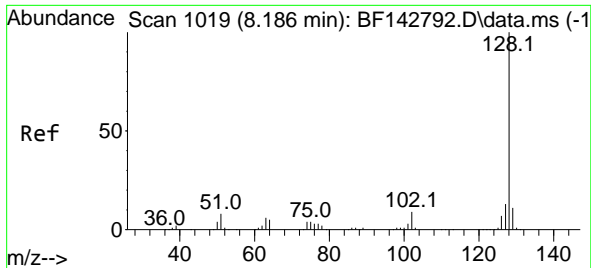


#30
 1,2,4-Trichlorobenzene
 Concen: 38.924 ng
 RT: 8.098 min Scan# 1004
 Delta R.T. -0.006 min
 Lab File: BF143048.D
 Acq: 09 Jul 2025 10:52



Tgt Ion:180 Resp: 155501
 Ion Ratio Lower Upper
 180 100
 182 94.8 76.4 114.6
 145 31.9 25.8 38.8





#31
 Naphthalene
 Concen: 38.510 ng
 RT: 8.181 min Scan# 10
 Delta R.T. -0.006 min
 Lab File: BF143048.D
 Acq: 09 Jul 2025 10:52

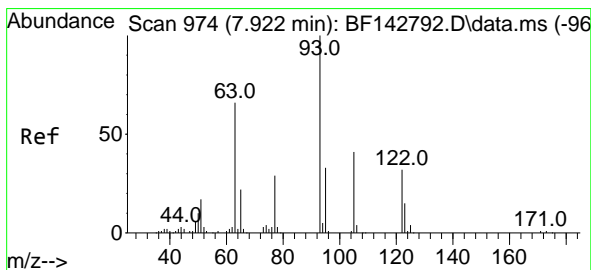
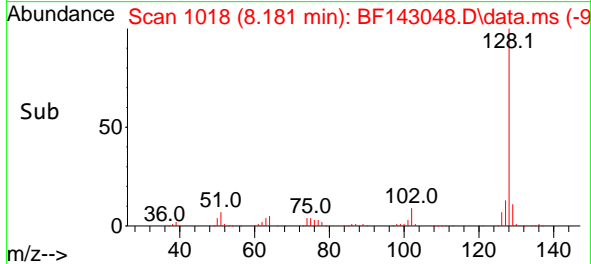
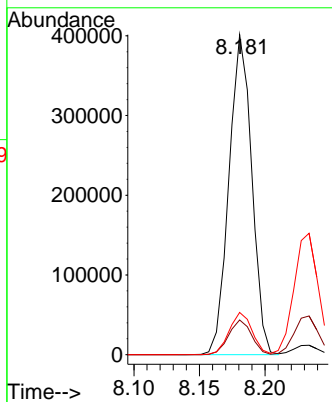
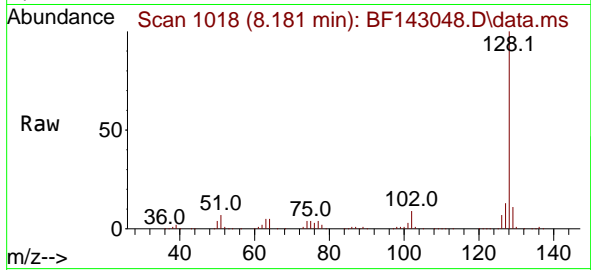
Instrument :

BNA_F

ClientSampleId :

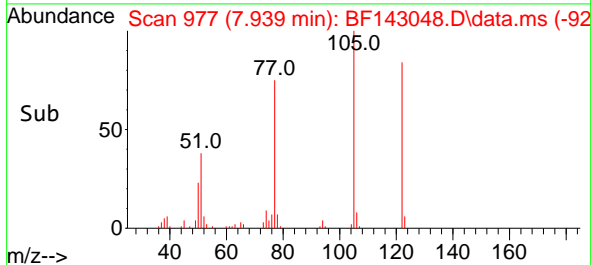
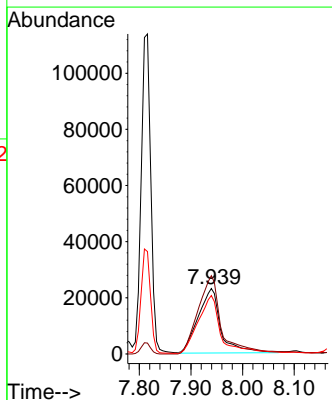
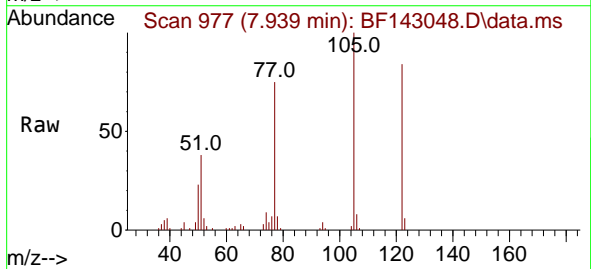
SSTDCCC040

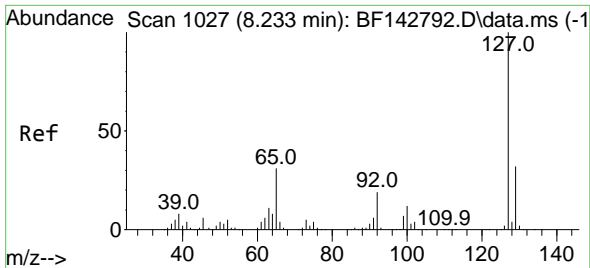
Tgt Ion:128 Resp: 485090
 Ion Ratio Lower Upper
 128 100
 129 10.8 8.9 13.3
 127 13.2 10.4 15.6



#32
 Benzoic acid
 Concen: 34.368 ng
 RT: 7.939 min Scan# 977
 Delta R.T. 0.018 min
 Lab File: BF143048.D
 Acq: 09 Jul 2025 10:52

Tgt Ion:122 Resp: 70188
 Ion Ratio Lower Upper
 122 100
 105 119.7 104.7 144.7
 77 89.3 70.2 110.2



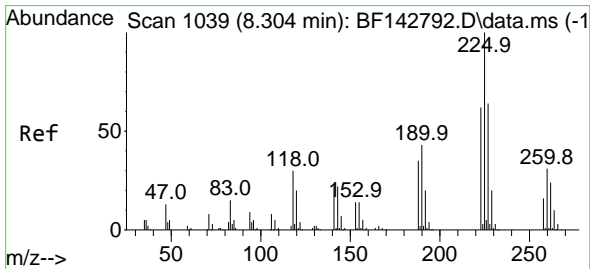
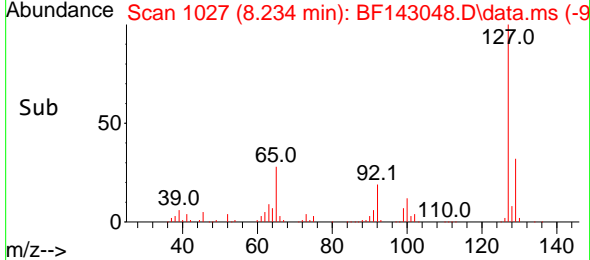
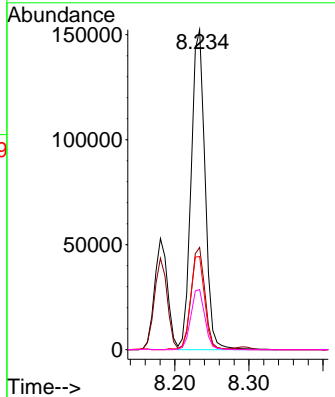
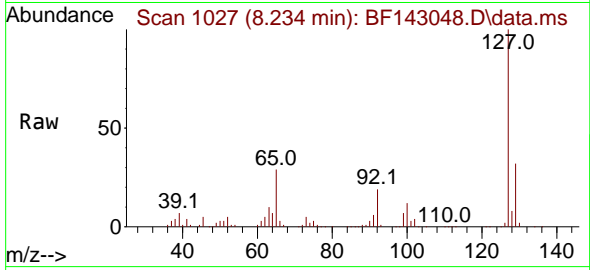


#33
 4-Chloroaniline
 Concen: 38.729 ng
 RT: 8.234 min Scan# 1037
 Delta R.T. 0.000 min
 Lab File: BF143048.D
 Acq: 09 Jul 2025 10:52

Instrument : BNA_F
 ClientSampleId : SSTDCCC040

Tgt Ion:127 Resp: 198369

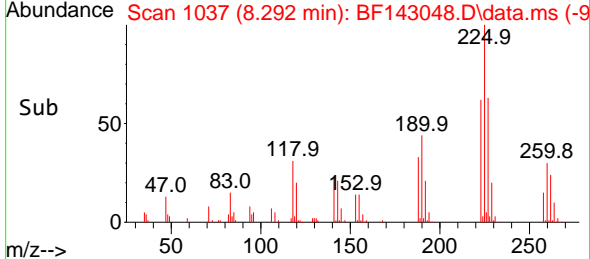
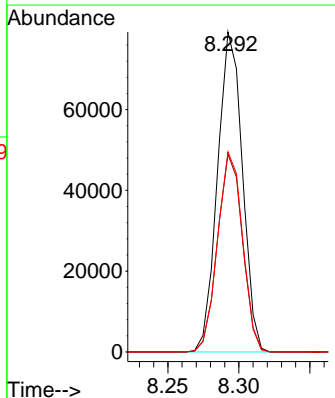
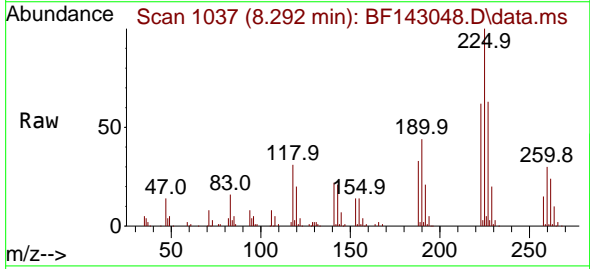
Ion	Ratio	Lower	Upper
127	100		
129	31.9	25.9	38.9
65	29.1	24.6	36.8
92	18.8	15.4	23.0

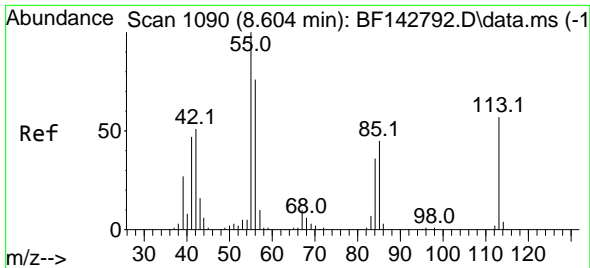


#34
 Hexachlorobutadiene
 Concen: 39.459 ng
 RT: 8.292 min Scan# 1037
 Delta R.T. -0.012 min
 Lab File: BF143048.D
 Acq: 09 Jul 2025 10:52

Tgt Ion:225 Resp: 96425

Ion	Ratio	Lower	Upper
225	100		
223	61.8	49.9	74.9
227	62.6	51.4	77.0



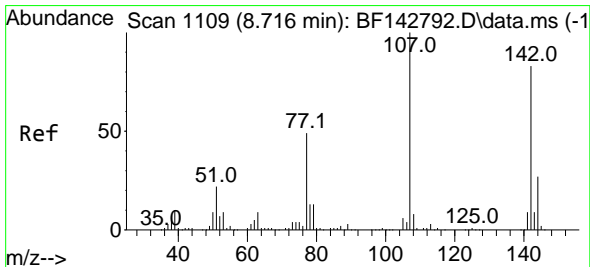
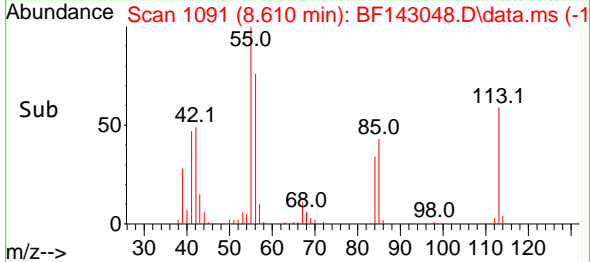
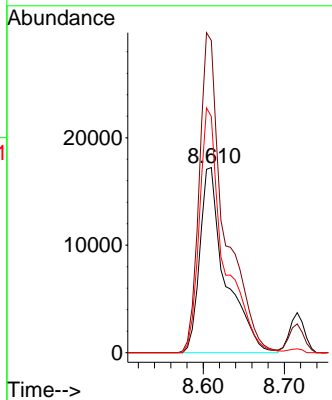
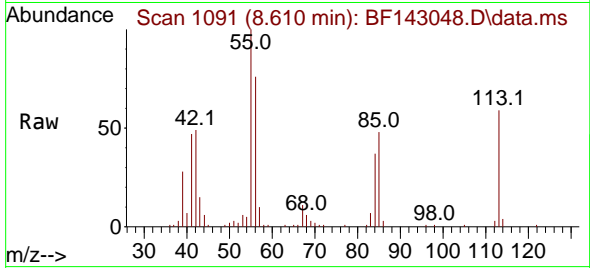


#35
 Caprolactam
 Concen: 39.295 ng
 RT: 8.610 min Scan# 1091
 Delta R.T. 0.006 min
 Lab File: BF143048.D
 Acq: 09 Jul 2025 10:52

Instrument : BNA_F
 ClientSampleId : SSTDCCC040

Tgt Ion:113 Resp: 37672

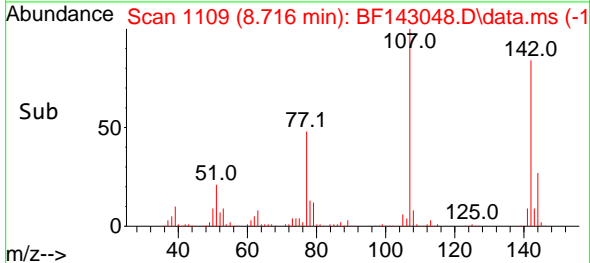
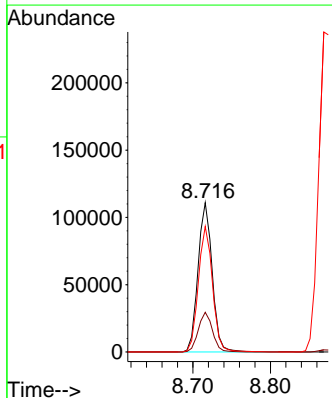
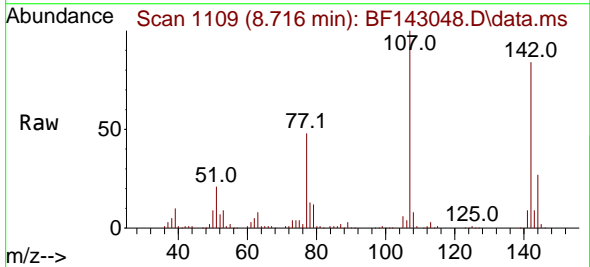
Ion	Ratio	Lower	Upper
113	100		
55	168.6	154.4	194.4
56	127.5	112.1	152.1

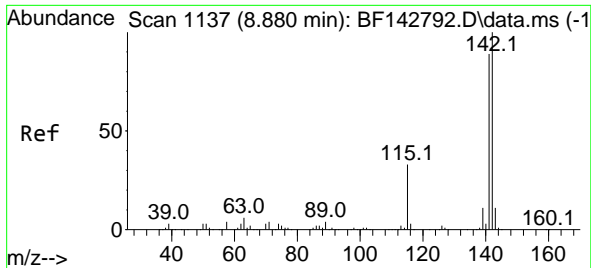


#36
 4-Chloro-3-methylphenol
 Concen: 39.110 ng
 RT: 8.716 min Scan# 1109
 Delta R.T. 0.000 min
 Lab File: BF143048.D
 Acq: 09 Jul 2025 10:52

Tgt Ion:107 Resp: 141216

Ion	Ratio	Lower	Upper
107	100		
144	26.5	21.3	31.9
142	84.0	66.6	100.0

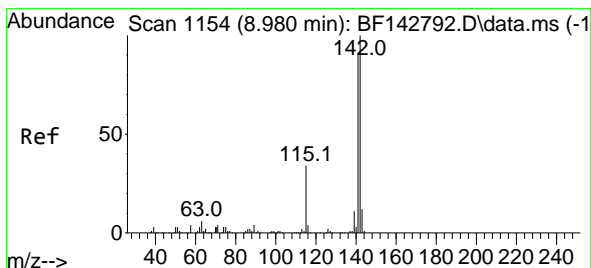
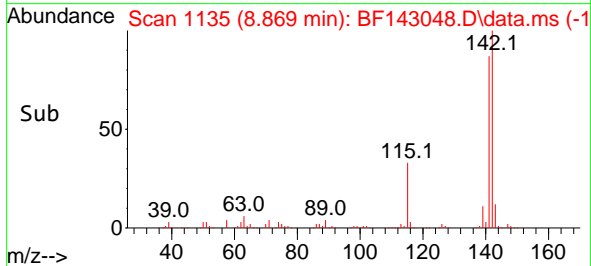
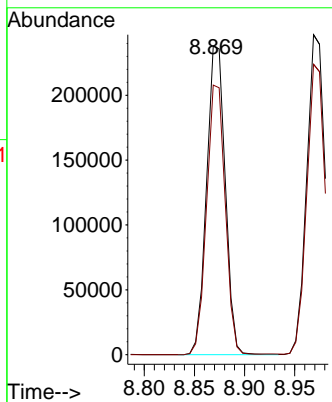
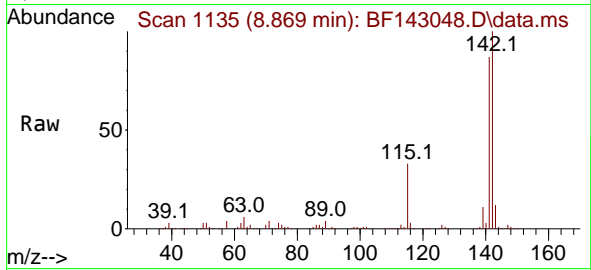




#37
 2-Methylnaphthalene
 Concen: 39.399 ng
 RT: 8.869 min Scan# 1115
 Delta R.T. -0.012 min
 Lab File: BF143048.D
 Acq: 09 Jul 2025 10:52

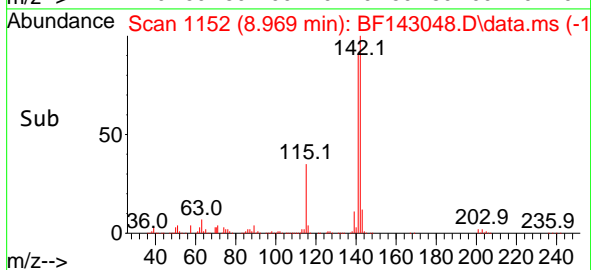
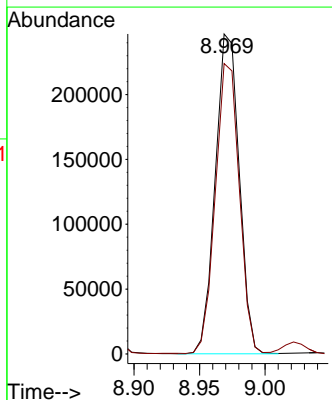
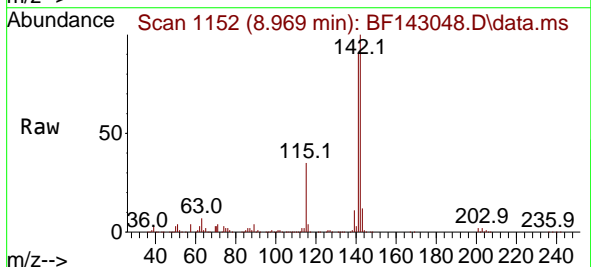
Instrument :
 BNA_F
 ClientSampleId :
 SSTDCCC040

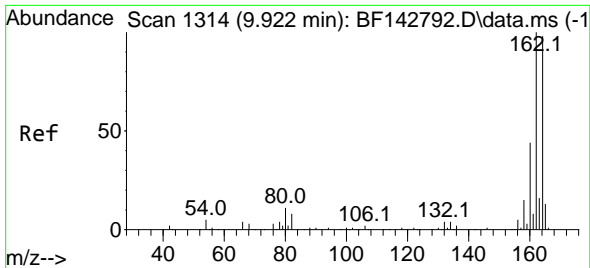
Tgt Ion:142 Resp: 307684
 Ion Ratio Lower Upper
 142 100
 141 87.4 70.9 106.3



#38
 1-Methylnaphthalene
 Concen: 38.726 ng
 RT: 8.969 min Scan# 1152
 Delta R.T. -0.012 min
 Lab File: BF143048.D
 Acq: 09 Jul 2025 10:52

Tgt Ion:142 Resp: 313072
 Ion Ratio Lower Upper
 142 100
 141 90.8 73.0 109.4



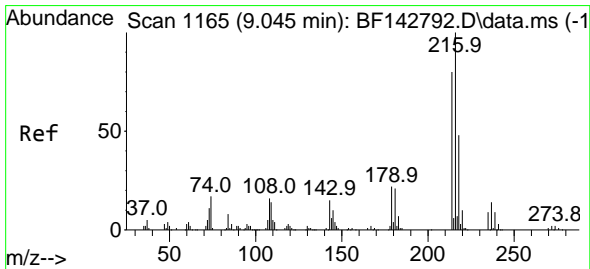
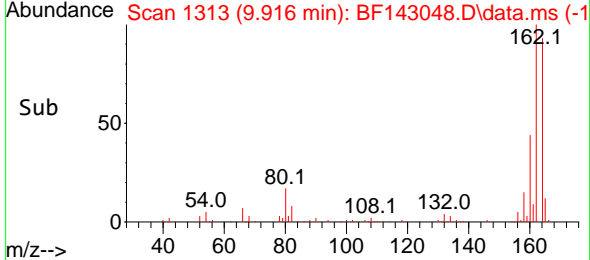
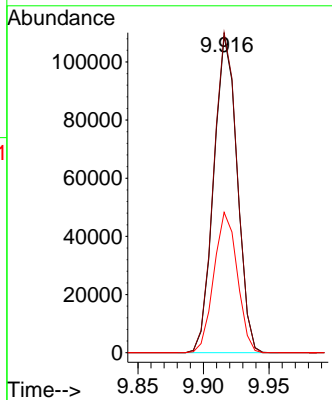
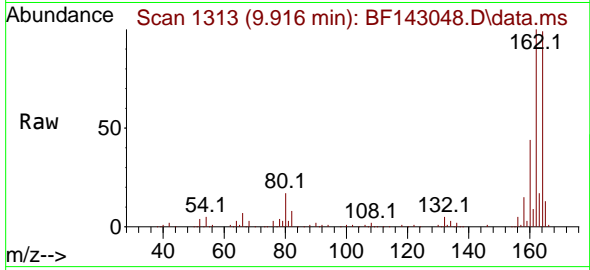


#39
 Acenaphthene-d10
 Concen: 20.000 ng
 RT: 9.916 min Scan# 1164
 Delta R.T. -0.006 min
 Lab File: BF143048.D
 Acq: 09 Jul 2025 10:52

Instrument : BNA_F
 Client Sample Id : SSTDCCC040

Tgt Ion:164 Resp: 135062

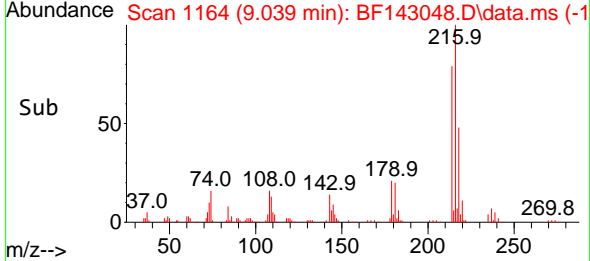
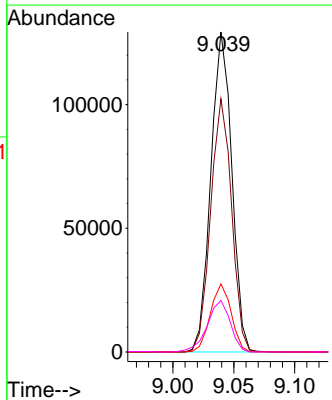
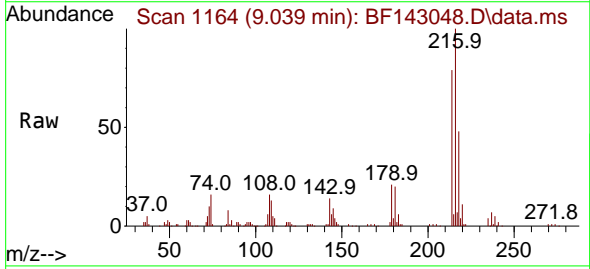
Ion	Ratio	Lower	Upper
164	100		
162	101.0	81.8	122.8
160	44.3	36.0	54.0

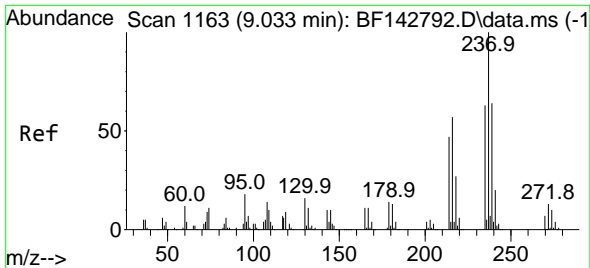


#40
 1,2,4,5-Tetrachlorobenzene
 Concen: 38.800 ng
 RT: 9.039 min Scan# 1164
 Delta R.T. -0.006 min
 Lab File: BF143048.D
 Acq: 09 Jul 2025 10:52

Tgt Ion:216 Resp: 154627

Ion	Ratio	Lower	Upper
216	100		
214	78.9	63.7	95.5
179	21.1	17.6	26.4
108	17.6	14.3	21.5

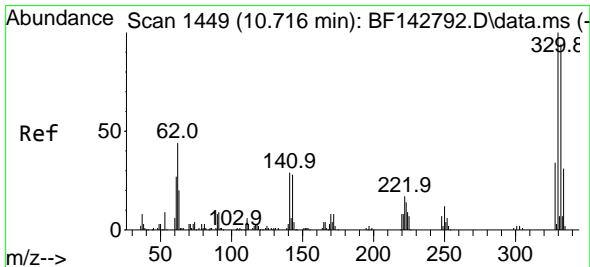
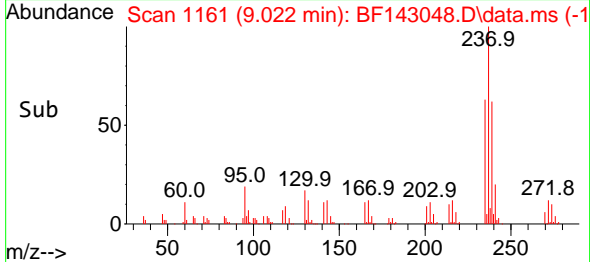
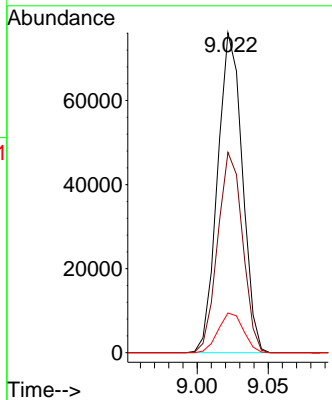
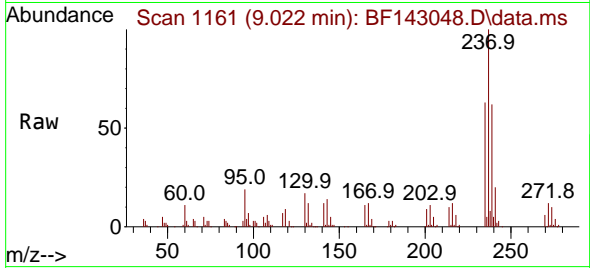




#41
 Hexachlorocyclopentadiene
 Concen: 40.772 ng
 RT: 9.022 min Scan# 1161
 Delta R.T. -0.012 min
 Lab File: BF143048.D
 Acq: 09 Jul 2025 10:52

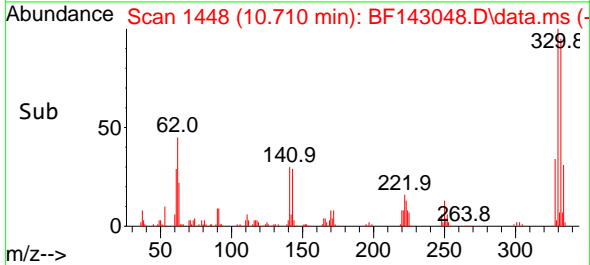
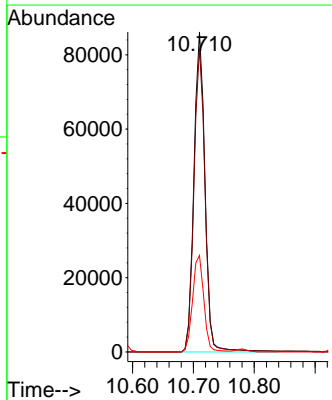
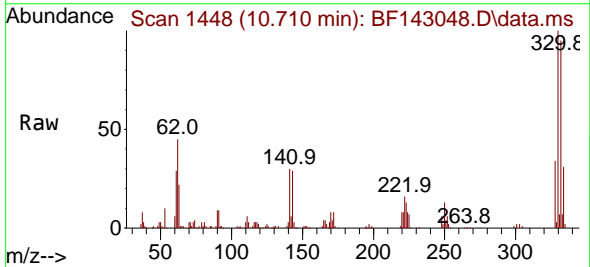
Instrument :
 BNA_F
 ClientSampleId :
 SSTDCCC040

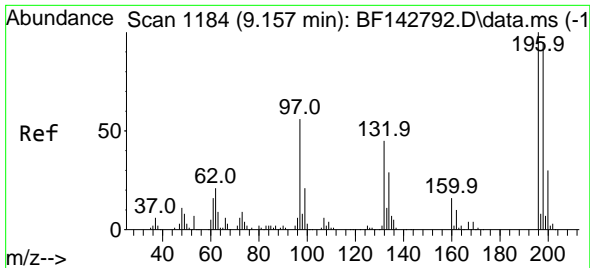
Tgt Ion:237 Resp: 92207
 Ion Ratio Lower Upper
 237 100
 235 62.6 43.4 83.4
 272 12.4 0.0 32.7



#42
 2,4,6-Tribromophenol
 Concen: 78.425 ng
 RT: 10.710 min Scan# 1448
 Delta R.T. -0.006 min
 Lab File: BF143048.D
 Acq: 09 Jul 2025 10:52

Tgt Ion:330 Resp: 109001
 Ion Ratio Lower Upper
 330 100
 332 95.0 75.0 112.6
 141 30.6 25.3 37.9



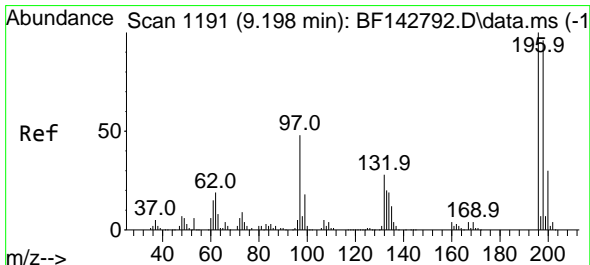
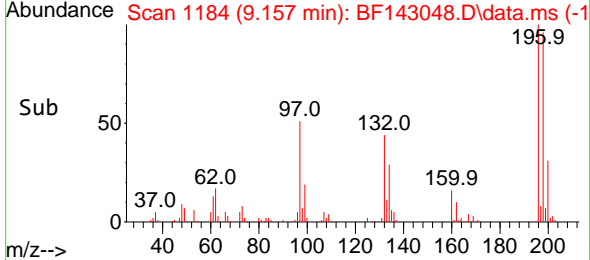
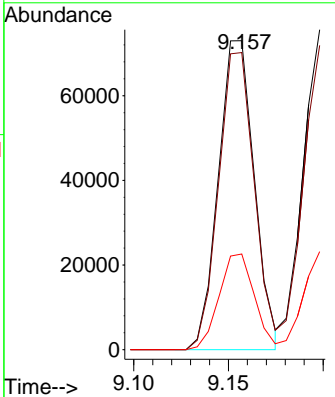
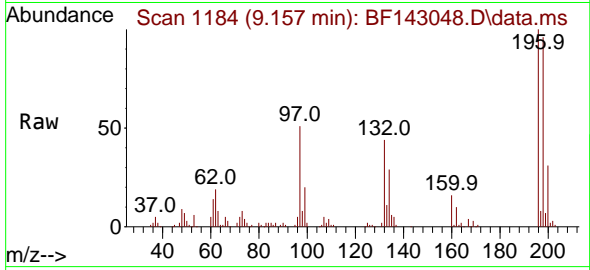


#43
 2,4,6-Trichlorophenol
 Concen: 37.080 ng
 RT: 9.157 min Scan# 1184
 Delta R.T. 0.000 min
 Lab File: BF143048.D
 Acq: 09 Jul 2025 10:52

Instrument : BNA_F
 ClientSampleId : SSTDCCC040

Tgt Ion:196 Resp: 96292

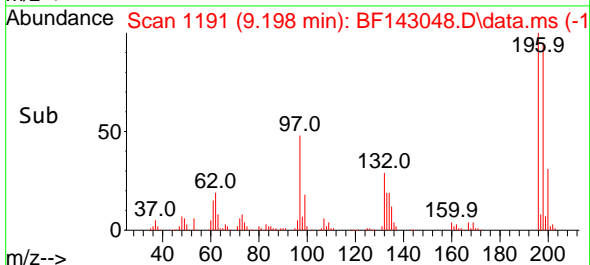
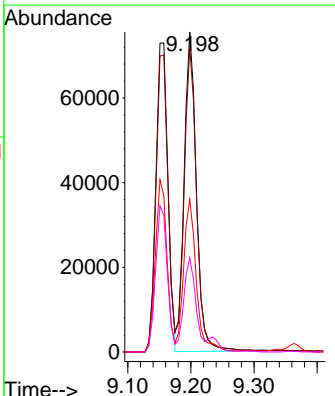
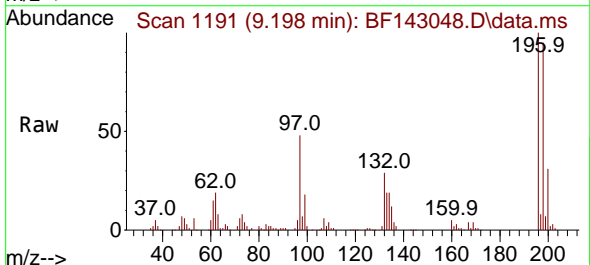
Ion	Ratio	Lower	Upper
196	100		
198	96.2	76.2	114.2
200	31.0	24.1	36.1

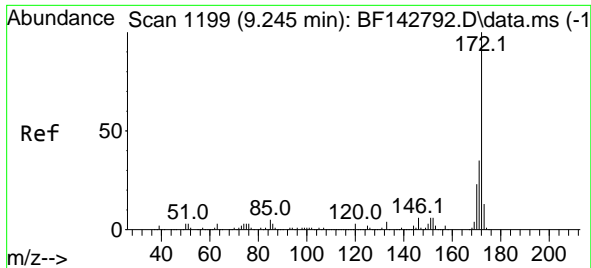


#44
 2,4,5-Trichlorophenol
 Concen: 37.440 ng
 RT: 9.198 min Scan# 1191
 Delta R.T. 0.000 min
 Lab File: BF143048.D
 Acq: 09 Jul 2025 10:52

Tgt Ion:196 Resp: 102349

Ion	Ratio	Lower	Upper
196	100		
198	95.1	76.6	115.0
97	47.7	38.2	57.2
132	29.4	23.4	35.0



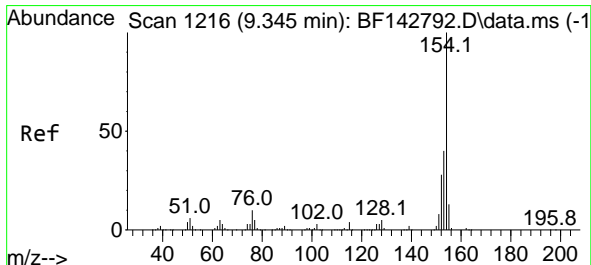
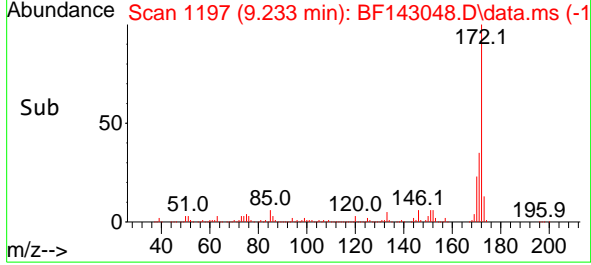
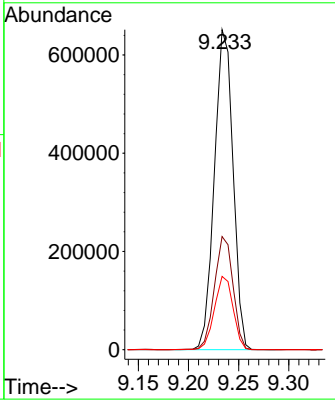
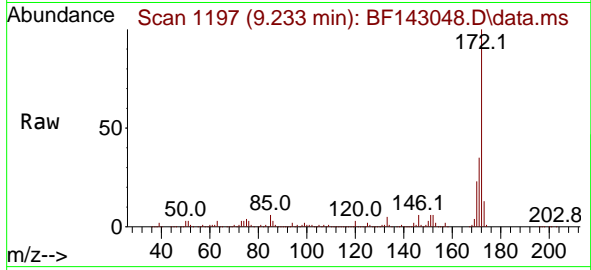


#45
 2-Fluorobiphenyl
 Concen: 81.687 ng
 RT: 9.233 min Scan# 1197
 Delta R.T. -0.012 min
 Lab File: BF143048.D
 Acq: 09 Jul 2025 10:52

Instrument : BNA_F
 ClientSampleId : SSTDCCC040

Tgt Ion:172 Resp: 839846

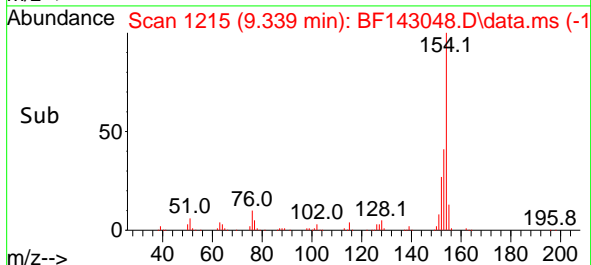
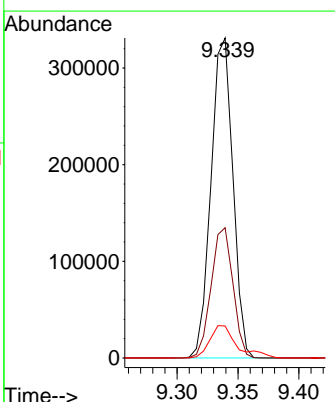
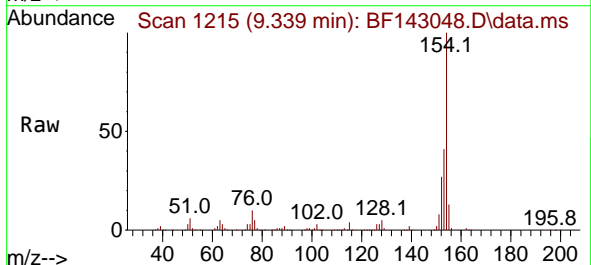
Ion	Ratio	Lower	Upper
172	100		
171	35.4	28.2	42.4
170	22.9	18.5	27.7

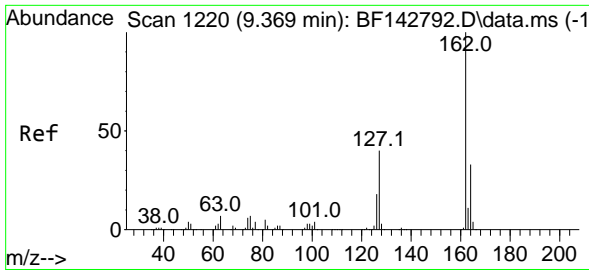


#46
 1,1'-Biphenyl
 Concen: 38.796 ng
 RT: 9.339 min Scan# 1215
 Delta R.T. -0.006 min
 Lab File: BF143048.D
 Acq: 09 Jul 2025 10:52

Tgt Ion:154 Resp: 413921

Ion	Ratio	Lower	Upper
154	100		
153	40.7	20.3	60.3
76	10.0	0.0	30.3



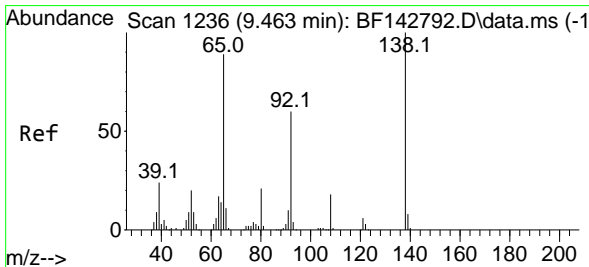
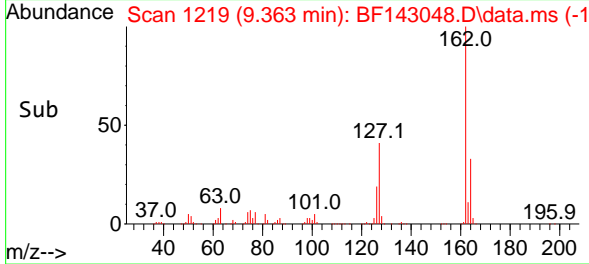
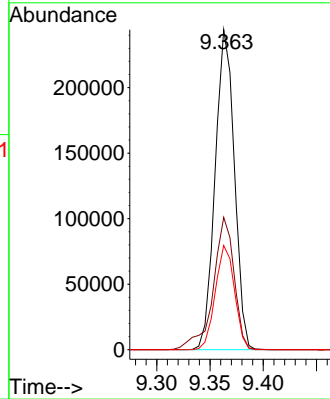
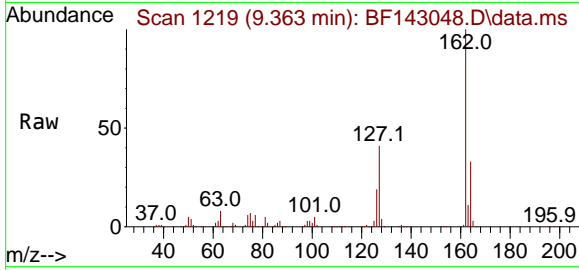


#47
 2-Chloronaphthalene
 Concen: 38.255 ng
 RT: 9.363 min Scan# 1219
 Delta R.T. -0.006 min
 Lab File: BF143048.D
 Acq: 09 Jul 2025 10:52

Instrument : BNA_F
 ClientSampleId : SSTDCCC040

Tgt Ion: 162 Resp: 306289

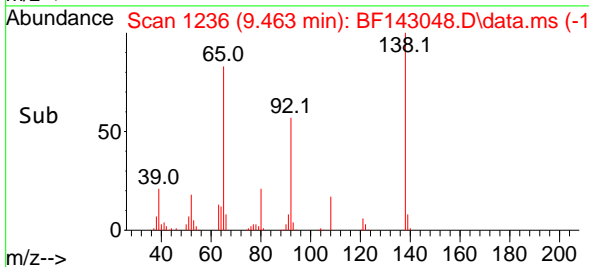
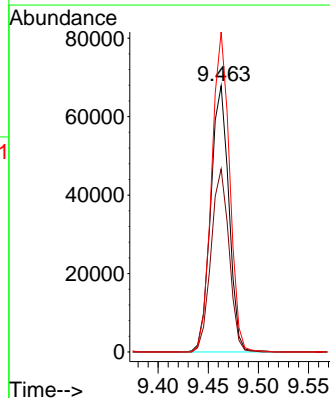
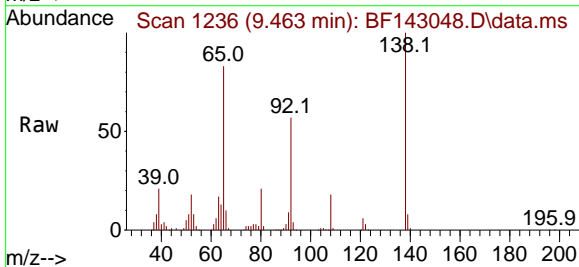
Ion	Ratio	Lower	Upper
162	100		
127	41.3	32.2	48.2
164	32.5	26.1	39.1

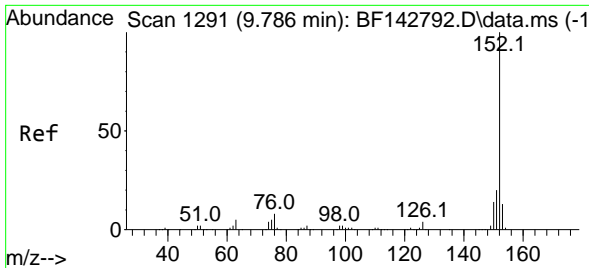


#48
 2-Nitroaniline
 Concen: 38.099 ng
 RT: 9.463 min Scan# 1236
 Delta R.T. 0.000 min
 Lab File: BF143048.D
 Acq: 09 Jul 2025 10:52

Tgt Ion: 65 Resp: 85518

Ion	Ratio	Lower	Upper
65	100		
92	68.8	53.8	80.6
138	120.2	89.6	134.4



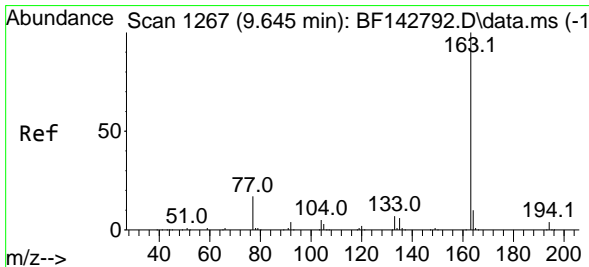
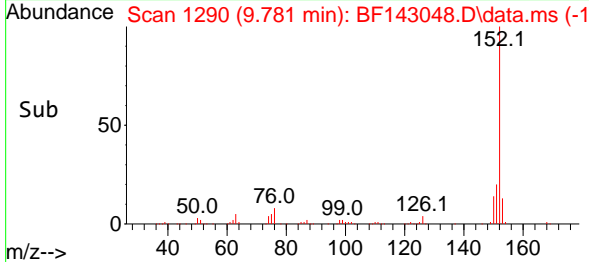
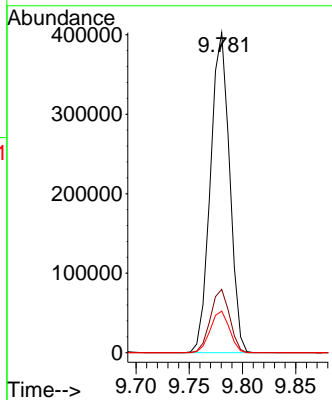
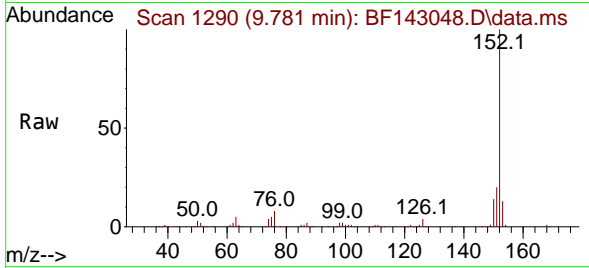


#49
 Acenaphthylene
 Concen: 38.176 ng
 RT: 9.781 min Scan# 11
 Delta R.T. -0.006 min
 Lab File: BF143048.D
 Acq: 09 Jul 2025 10:52

Instrument : BNA_F
 ClientSampleId : SSTDCCC040

Tgt Ion:152 Resp: 503177

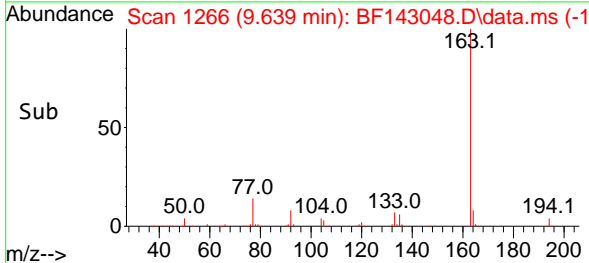
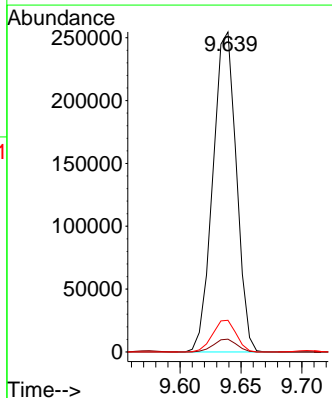
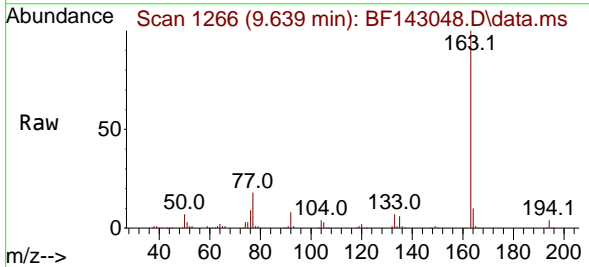
Ion	Ratio	Lower	Upper
152	100		
151	19.8	16.1	24.1
153	13.0	10.4	15.6

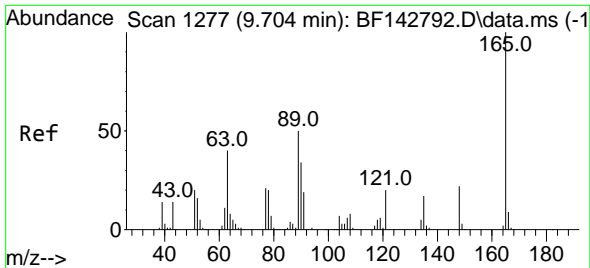


#50
 Dimethylphthalate
 Concen: 39.177 ng
 RT: 9.639 min Scan# 1266
 Delta R.T. -0.006 min
 Lab File: BF143048.D
 Acq: 09 Jul 2025 10:52

Tgt Ion:163 Resp: 342506

Ion	Ratio	Lower	Upper
163	100		
194	4.0	3.3	4.9
164	9.9	8.0	12.0

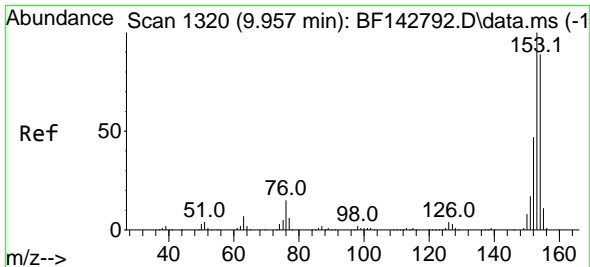
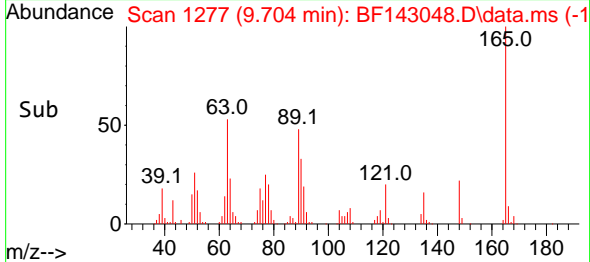
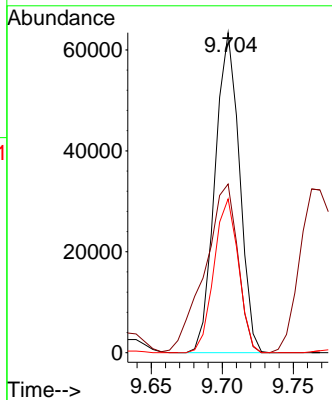
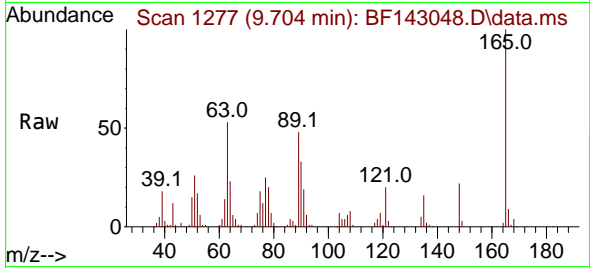




#51
 2,6-Dinitrotoluene
 Concen: 39.500 ng
 RT: 9.704 min Scan# 1111
 Delta R.T. 0.000 min
 Lab File: BF143048.D
 Acq: 09 Jul 2025 10:52

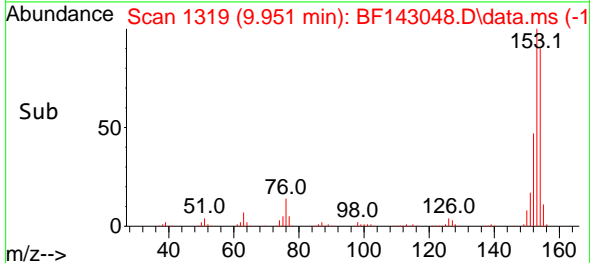
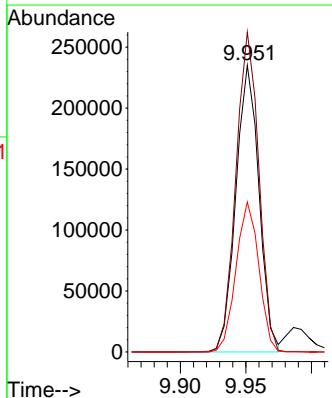
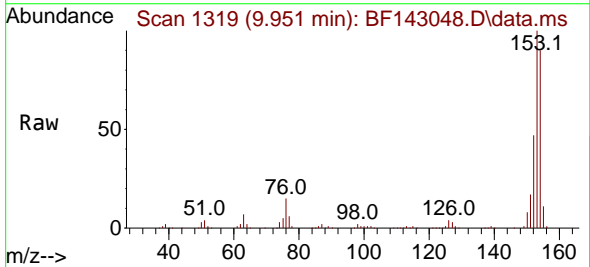
Instrument : BNA_F
 ClientSampleId : SSTDCCC040

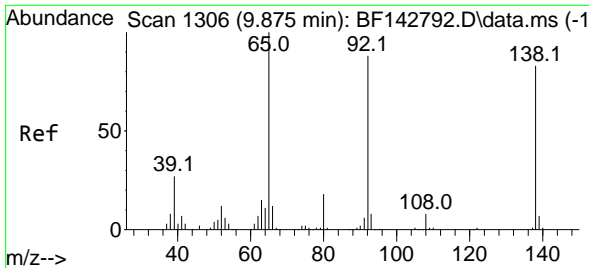
Tgt Ion	Resp	Lower	Upper
165	100		
63	52.7	44.2	66.4
89	48.1	39.8	59.8



#52
 Acenaphthene
 Concen: 35.905 ng
 RT: 9.951 min Scan# 1319
 Delta R.T. -0.006 min
 Lab File: BF143048.D
 Acq: 09 Jul 2025 10:52

Tgt Ion	Resp	Lower	Upper
154	100		
153	111.6	90.0	135.0
152	52.3	41.9	62.9



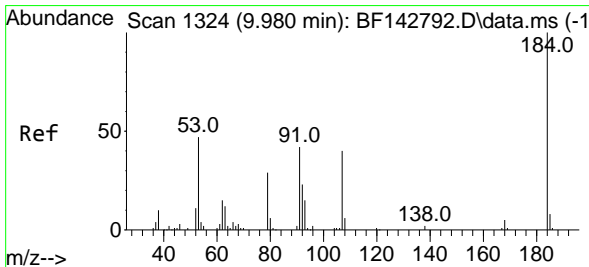
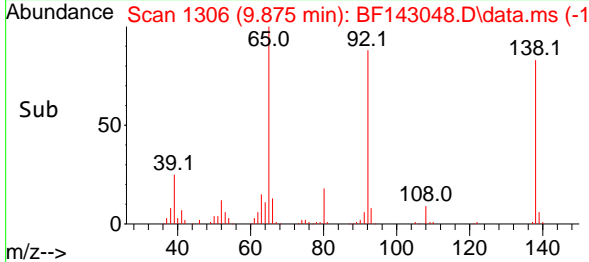
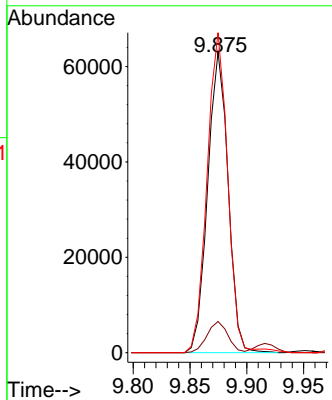
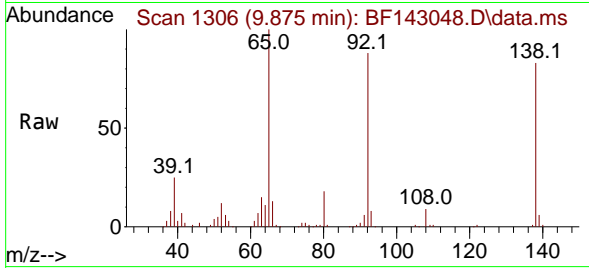


#53
 3-Nitroaniline
 Concen: 37.342 ng
 RT: 9.875 min Scan# 11
 Delta R.T. 0.000 min
 Lab File: BF143048.D
 Acq: 09 Jul 2025 10:52

Instrument : BNA_F
 ClientSampleId : SSTDCCC040

Tgt Ion:138 Resp: 78937

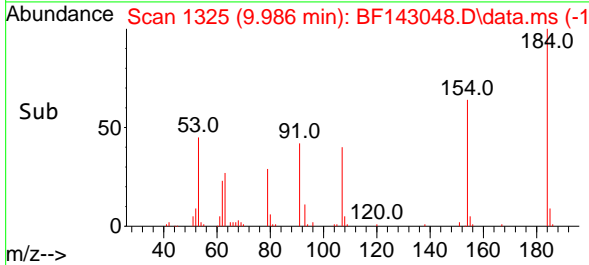
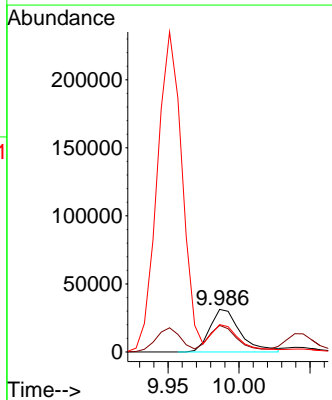
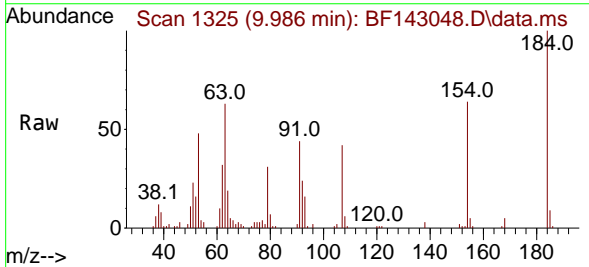
Ion	Ratio	Lower	Upper
138	100		
108	10.4	8.1	12.1
92	106.5	85.1	127.7

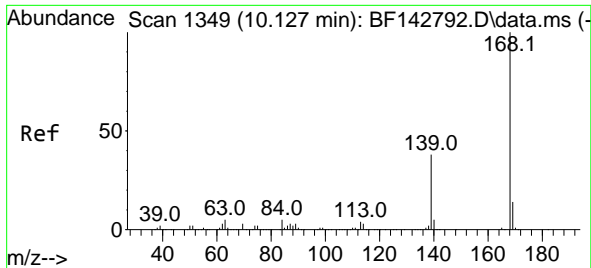


#54
 2,4-Dinitrophenol
 Concen: 48.583 ng
 RT: 9.986 min Scan# 1325
 Delta R.T. 0.006 min
 Lab File: BF143048.D
 Acq: 09 Jul 2025 10:52

Tgt Ion:184 Resp: 46706

Ion	Ratio	Lower	Upper
184	100		
63	62.6	50.6	75.8
154	64.2	51.8	77.8





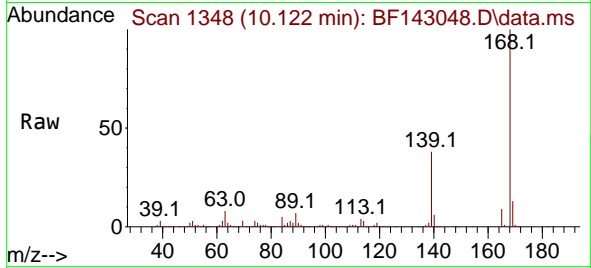
#55
 Dibenzofuran
 Concen: 38.190 ng
 RT: 10.122 min Scan# 11
 Delta R.T. -0.006 min
 Lab File: BF143048.D
 Acq: 09 Jul 2025 10:52

Instrument :

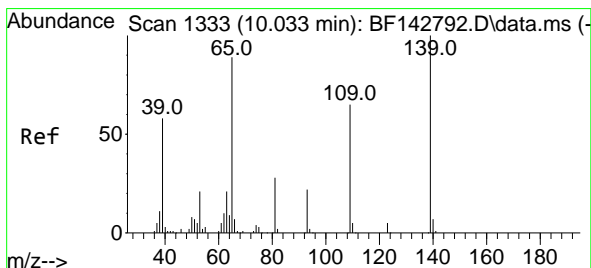
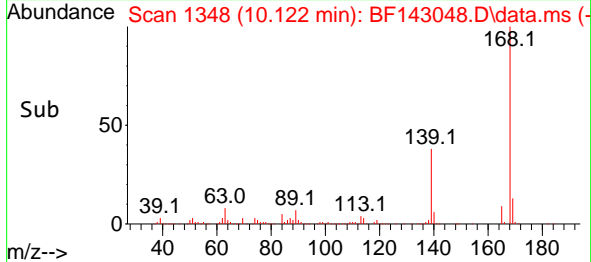
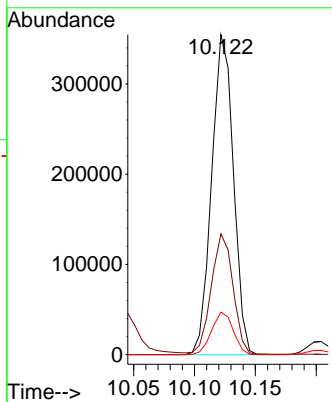
BNA_F

ClientSampleId :

SSTDCCC040

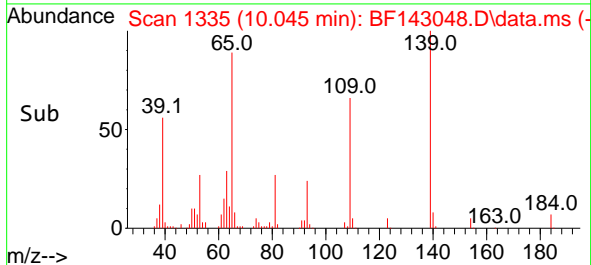
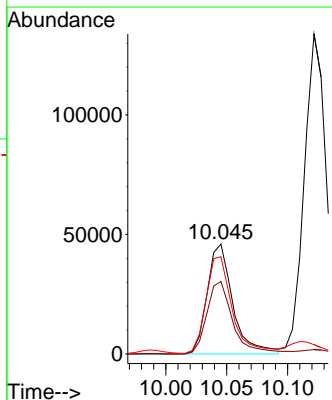
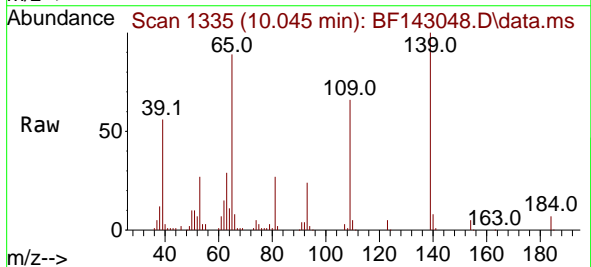


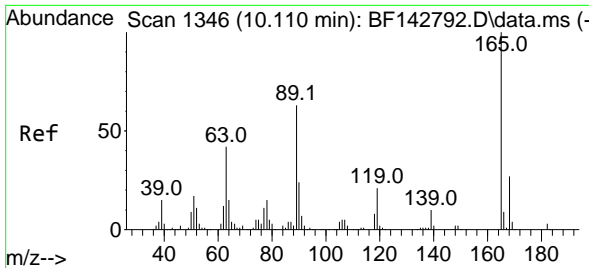
Tgt Ion:168 Resp: 440391
 Ion Ratio Lower Upper
 168 100
 139 37.8 30.2 45.4
 169 13.3 10.8 16.2



#56
 4-Nitrophenol
 Concen: 46.654 ng
 RT: 10.045 min Scan# 1335
 Delta R.T. 0.012 min
 Lab File: BF143048.D
 Acq: 09 Jul 2025 10:52

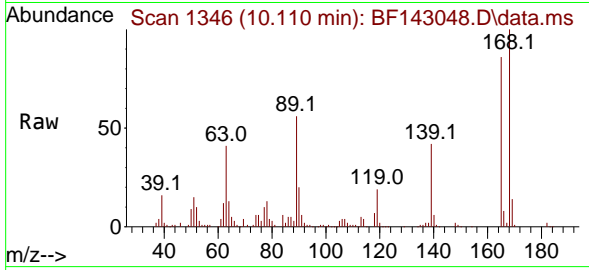
Tgt Ion:139 Resp: 67517
 Ion Ratio Lower Upper
 139 100
 109 65.9 44.7 84.7
 65 88.5 69.8 109.8





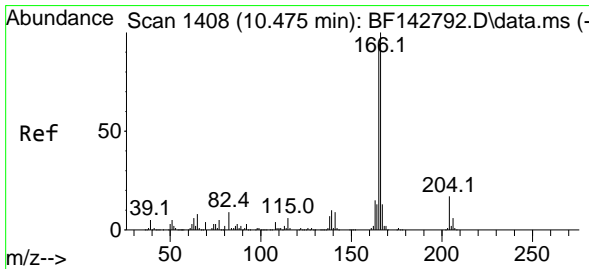
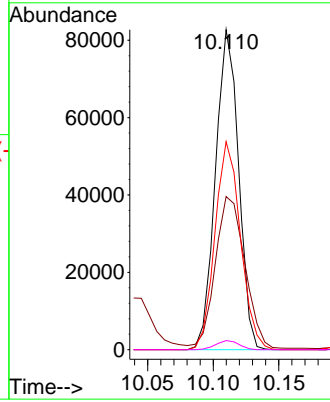
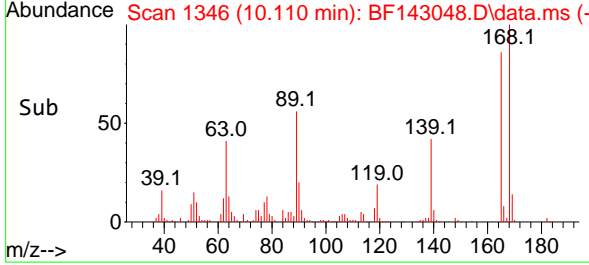
#57
 2,4-Dinitrotoluene
 Concen: 39.687 ng
 RT: 10.110 min Scan# 11
 Delta R.T. 0.000 min
 Lab File: BF143048.D
 Acq: 09 Jul 2025 10:52

Instrument :
 BNA_F
 ClientSampleId :
 SSTDCCC040

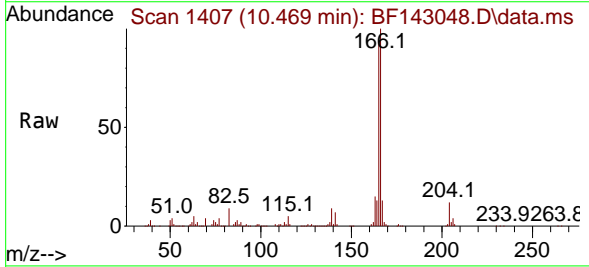


Tgt Ion:165 Resp: 101213

Ion	Ratio	Lower	Upper
165	100		
63	47.8	33.9	50.9
89	65.0	50.6	75.8
182	2.9	2.3	3.5

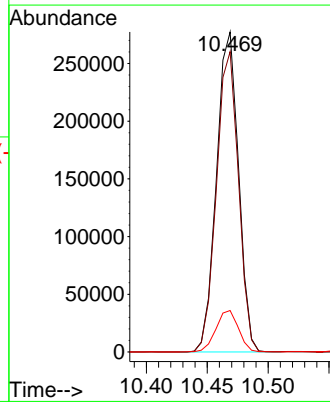
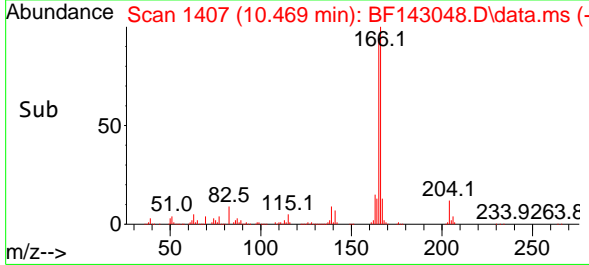


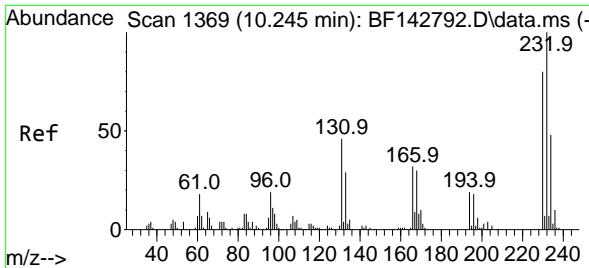
#58
 Fluorene
 Concen: 38.743 ng
 RT: 10.469 min Scan# 1407
 Delta R.T. -0.006 min
 Lab File: BF143048.D
 Acq: 09 Jul 2025 10:52



Tgt Ion:166 Resp: 348917

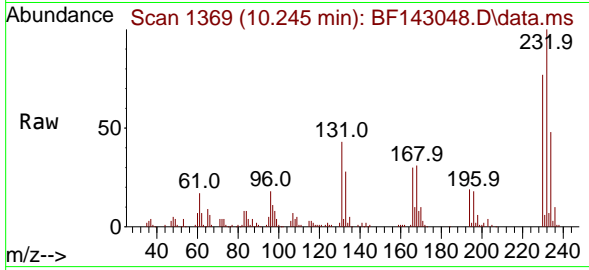
Ion	Ratio	Lower	Upper
166	100		
165	93.8	75.2	112.8
167	13.0	10.6	15.8



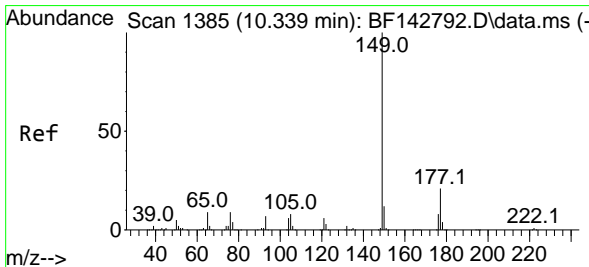
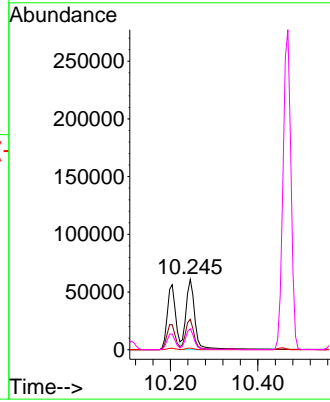
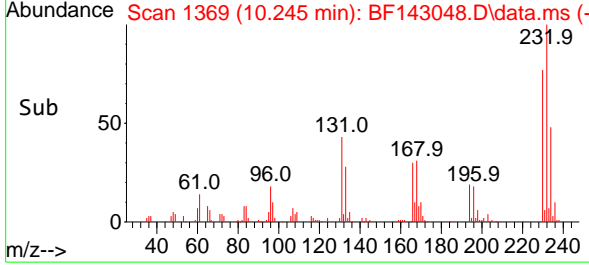


#59
 2,3,4,6-Tetrachlorophenol
 Concen: 39.043 ng
 RT: 10.245 min Scan# 1
 Delta R.T. 0.000 min
 Lab File: BF143048.D
 Acq: 09 Jul 2025 10:52

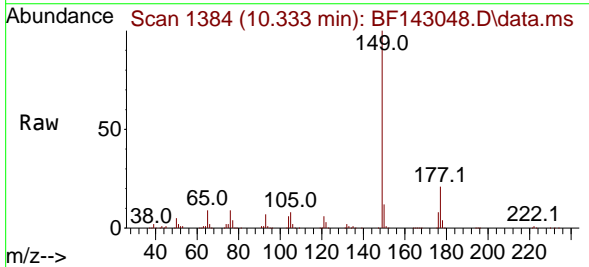
Instrument :
 BNA_F
 ClientSampleId :
 SSTDCCC040



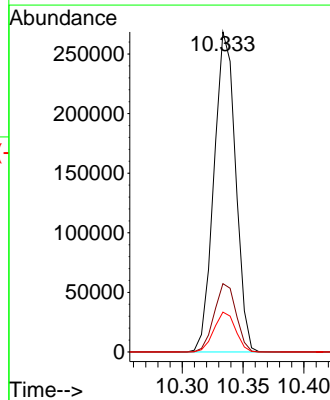
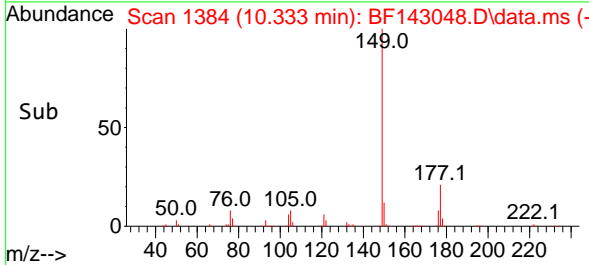
Tgt Ion:232 Resp: 86032
 Ion Ratio Lower Upper
 232 100
 131 41.5 37.6 56.4
 130 2.2 1.7 2.5
 166 27.5 25.8 38.6

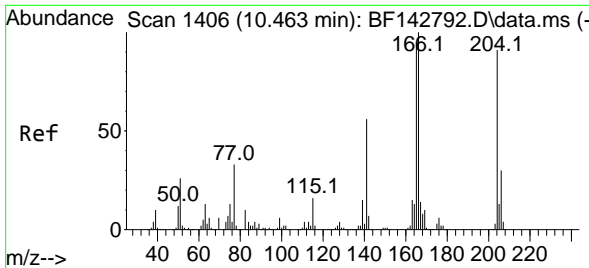


#60
 Diethylphthalate
 Concen: 38.796 ng
 RT: 10.333 min Scan# 1384
 Delta R.T. -0.006 min
 Lab File: BF143048.D
 Acq: 09 Jul 2025 10:52



Tgt Ion:149 Resp: 332556
 Ion Ratio Lower Upper
 149 100
 177 21.4 17.0 25.6
 150 12.5 9.8 14.6



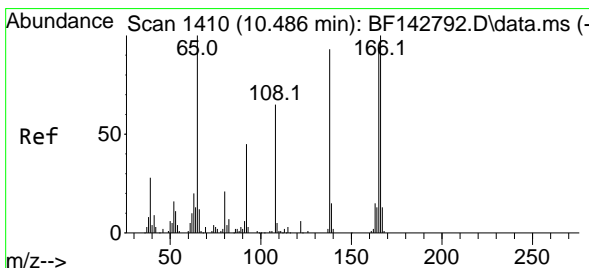
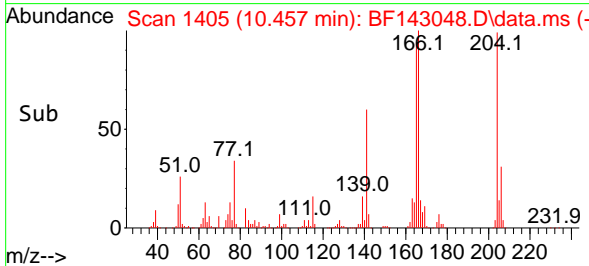
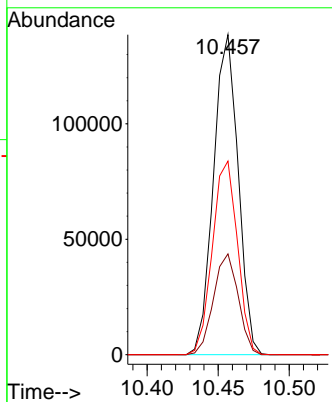
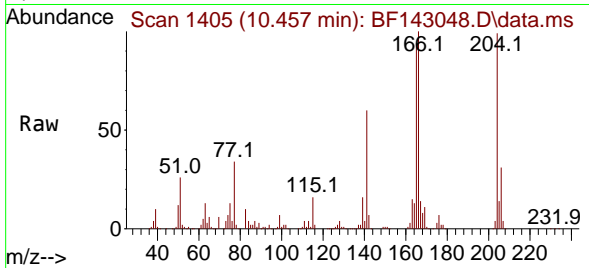


#61
 4-Chlorophenyl-phenylether
 Concen: 38.996 ng
 RT: 10.457 min Scan# 1405
 Delta R.T. -0.006 min
 Lab File: BF143048.D
 Acq: 09 Jul 2025 10:52

Instrument : BNA_F
 ClientSampleId : SSTDCCC040

Tgt Ion: 204 Resp: 167583

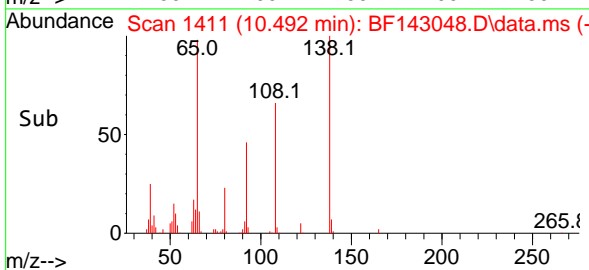
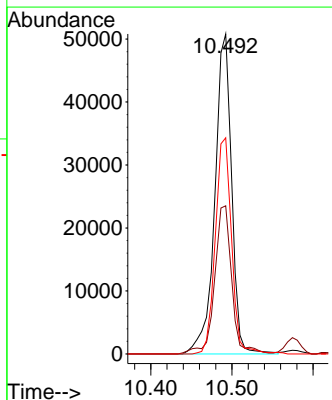
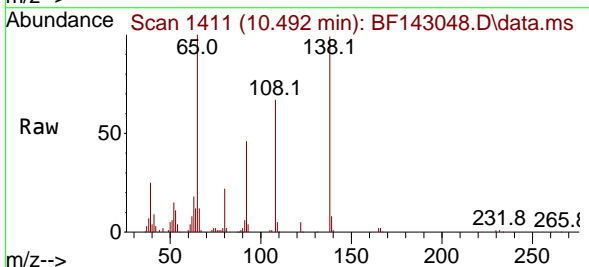
Ion	Ratio	Lower	Upper
204	100		
206	31.5	26.3	39.5
141	60.5	49.1	73.7

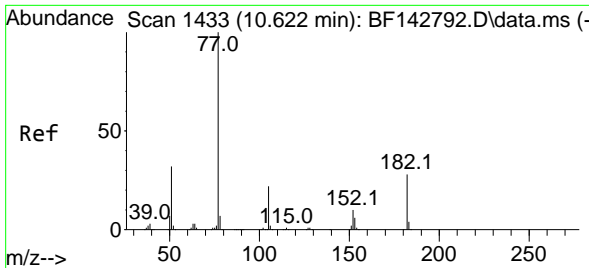


#62
 4-Nitroaniline
 Concen: 37.820 ng
 RT: 10.492 min Scan# 1411
 Delta R.T. 0.006 min
 Lab File: BF143048.D
 Acq: 09 Jul 2025 10:52

Tgt Ion: 138 Resp: 73117

Ion	Ratio	Lower	Upper
138	100		
92	46.3	28.4	68.4
108	67.5	50.2	90.2



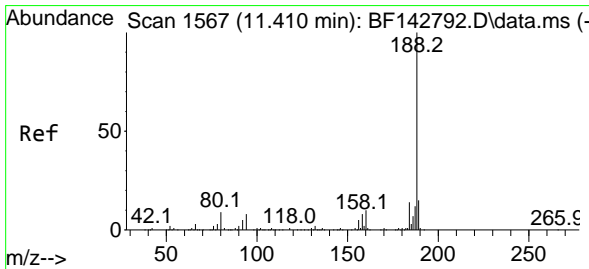
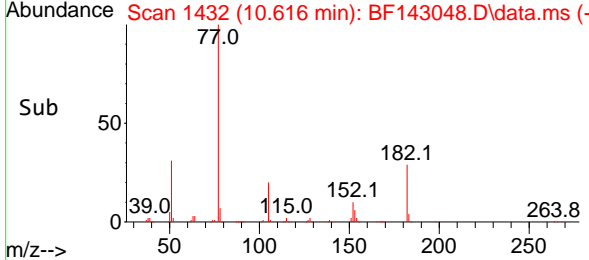
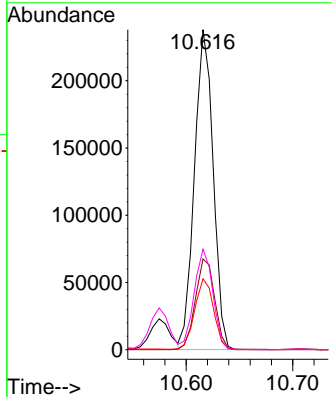
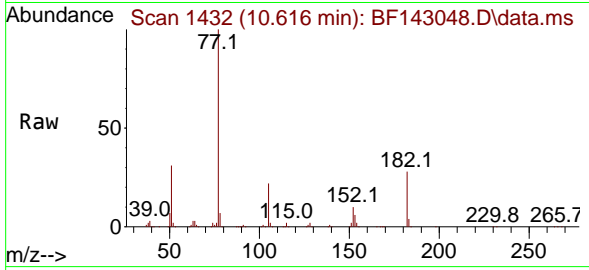


#63
 Azobenzene
 Concen: 37.983 ng
 RT: 10.616 min Scan# 1432
 Delta R.T. -0.006 min
 Lab File: BF143048.D
 Acq: 09 Jul 2025 10:52

Instrument : BNA_F
 ClientSampleId : SSTDCCC040

Tgt Ion: 77 Resp: 291002

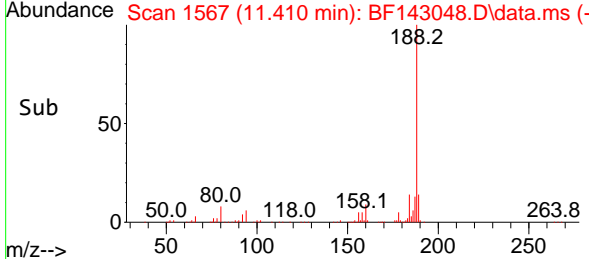
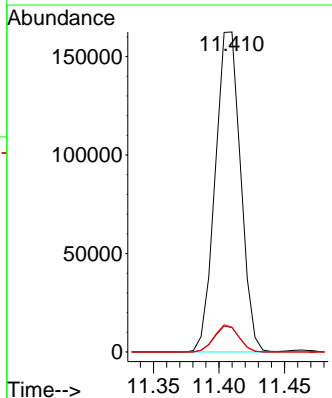
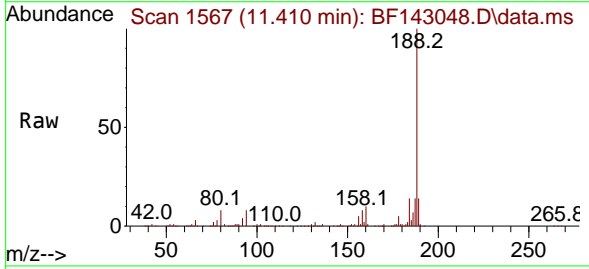
Ion	Ratio	Lower	Upper
77	100		
182	28.4	7.7	47.7
105	22.1	1.9	41.9
51	31.4	13.3	53.3

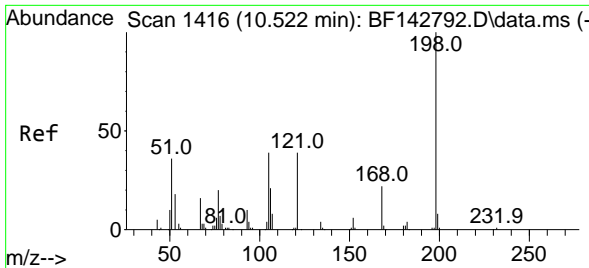


#64
 Phenanthrene-d10
 Concen: 20.000 ng
 RT: 11.410 min Scan# 1567
 Delta R.T. 0.000 min
 Lab File: BF143048.D
 Acq: 09 Jul 2025 10:52

Tgt Ion: 188 Resp: 218580

Ion	Ratio	Lower	Upper
188	100		
94	7.6	6.7	10.1
80	7.8	6.9	10.3



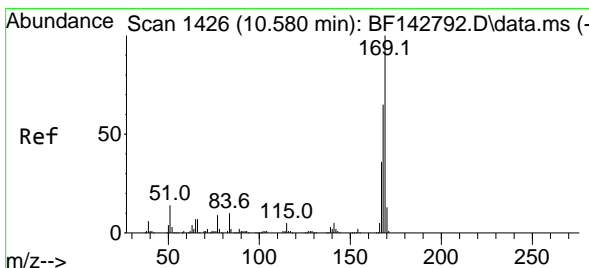
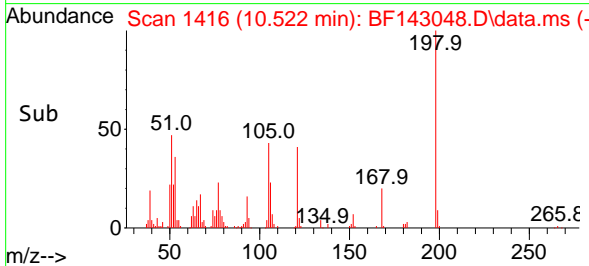
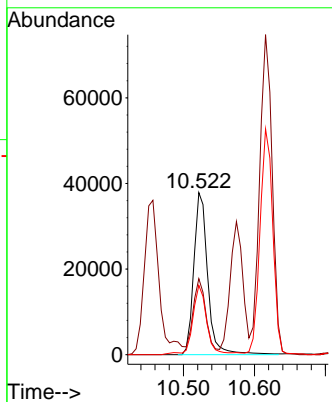
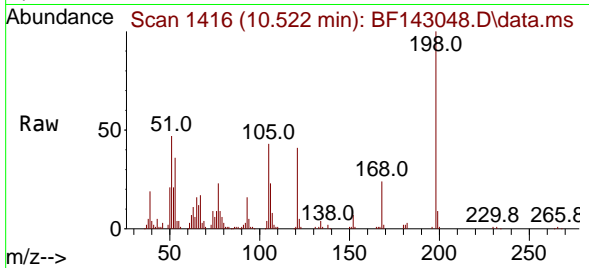


#65
 4,6-Dinitro-2-methylphenol
 Concen: 39.111 ng
 RT: 10.522 min Scan# 1416
 Delta R.T. 0.000 min
 Lab File: BF143048.D
 Acq: 09 Jul 2025 10:52

Instrument : BNA_F
 ClientSampleId : SSTDCCC040

Tgt Ion:198 Resp: 51710

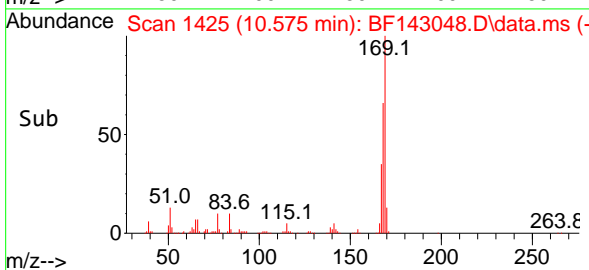
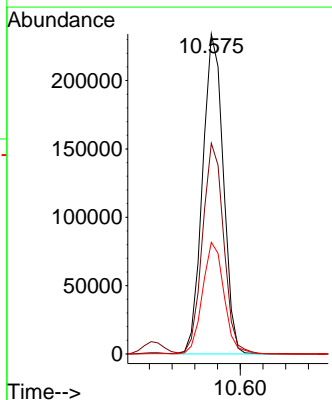
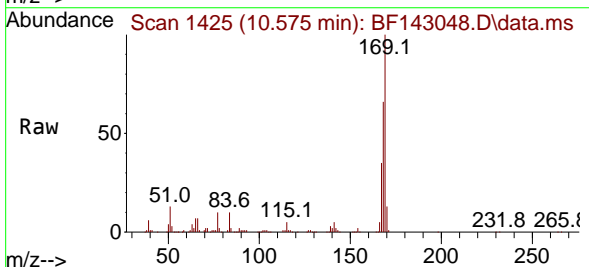
Ion	Ratio	Lower	Upper
198	100		
51	46.9	25.4	65.4
105	42.7	20.4	60.4

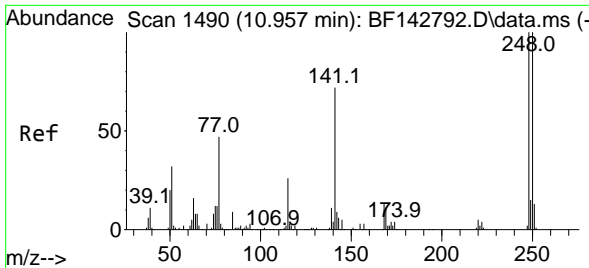


#66
 n-Nitrosodiphenylamine
 Concen: 39.109 ng
 RT: 10.575 min Scan# 1425
 Delta R.T. -0.006 min
 Lab File: BF143048.D
 Acq: 09 Jul 2025 10:52

Tgt Ion:169 Resp: 296265

Ion	Ratio	Lower	Upper
169	100		
168	65.9	51.9	77.9
167	34.9	28.5	42.7





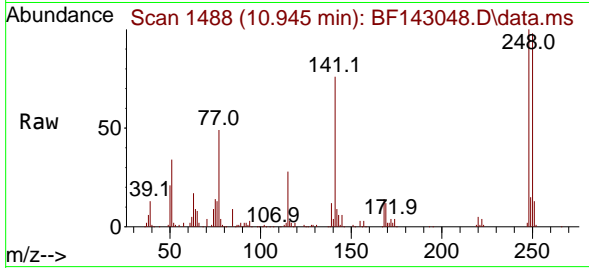
#67
 4-Bromophenyl-phenylether
 Concen: 40.295 ng
 RT: 10.945 min Scan# 14
 Delta R.T. -0.012 min
 Lab File: BF143048.D
 Acq: 09 Jul 2025 10:52

Instrument :

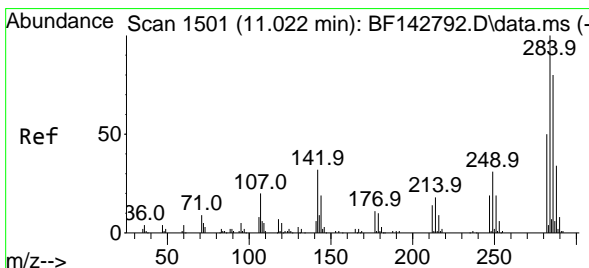
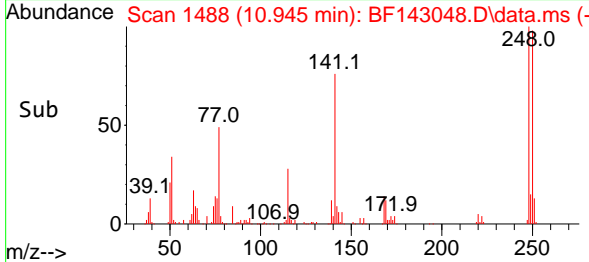
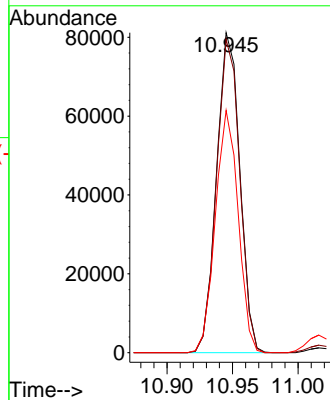
BNA_F

ClientSampleId :

SSTDCCC040

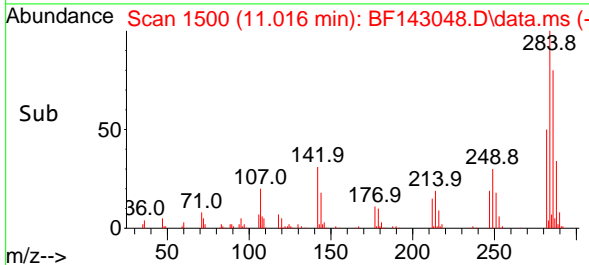
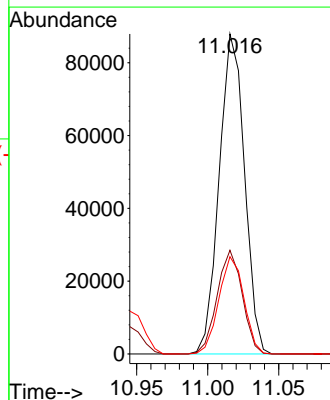
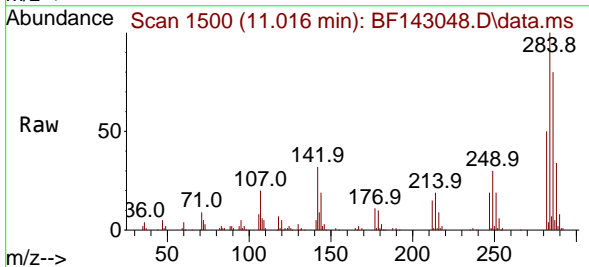


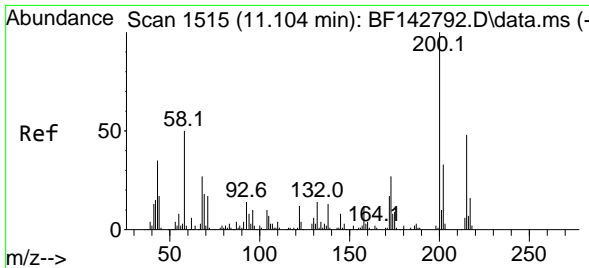
Tgt Ion:248 Resp: 100240
 Ion Ratio Lower Upper
 248 100
 250 97.9 79.8 119.8
 141 75.7 57.8 86.6



#68
 Hexachlorobenzene
 Concen: 39.445 ng
 RT: 11.016 min Scan# 1500
 Delta R.T. -0.006 min
 Lab File: BF143048.D
 Acq: 09 Jul 2025 10:52

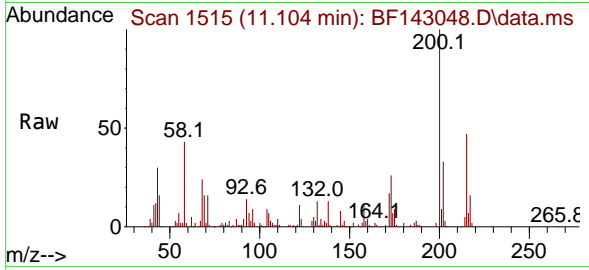
Tgt Ion:284 Resp: 109033
 Ion Ratio Lower Upper
 284 100
 142 32.4 25.5 38.3
 249 30.4 24.9 37.3



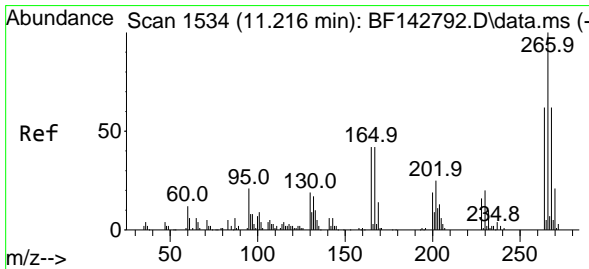
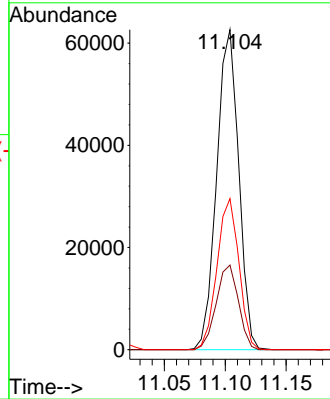
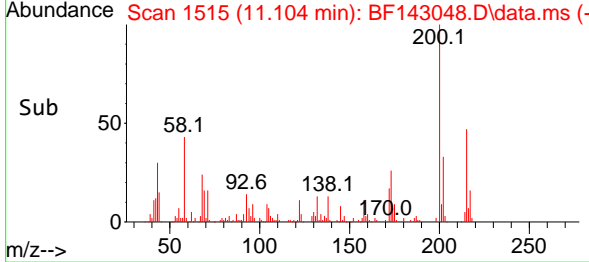


#69
 Atrazine
 Concen: 40.271 ng
 RT: 11.104 min Scan# 1515
 Delta R.T. 0.000 min
 Lab File: BF143048.D
 Acq: 09 Jul 2025 10:52

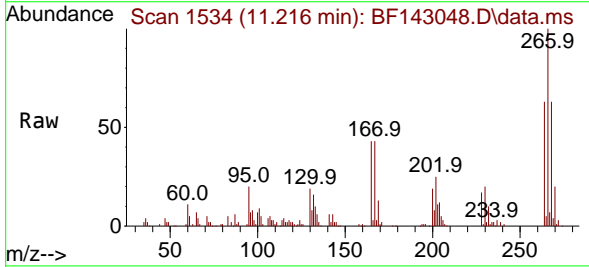
Instrument :
 BNA_F
 ClientSampleId :
 SSTDCCC040



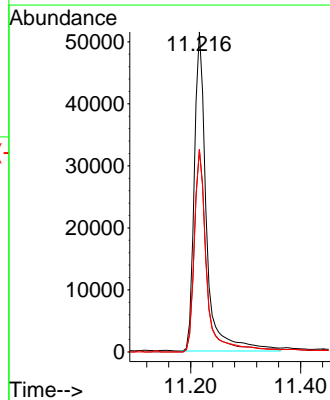
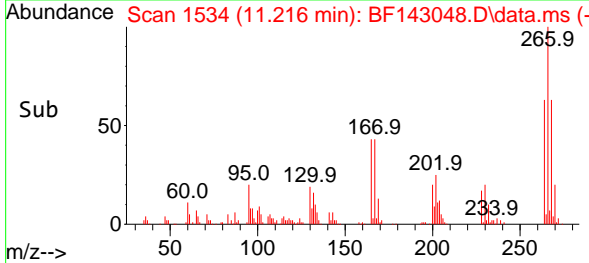
Tgt Ion:200 Resp: 78779
 Ion Ratio Lower Upper
 200 100
 173 26.4 7.4 47.4
 215 47.2 28.4 68.4

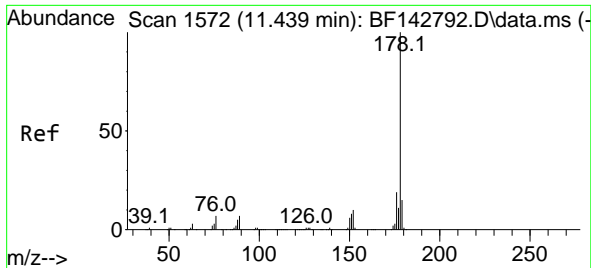


#70
 Pentachlorophenol
 Concen: 57.552 ng
 RT: 11.216 min Scan# 1534
 Delta R.T. 0.000 min
 Lab File: BF143048.D
 Acq: 09 Jul 2025 10:52



Tgt Ion:266 Resp: 79272
 Ion Ratio Lower Upper
 266 100
 268 63.2 49.8 74.8
 264 63.3 49.9 74.9

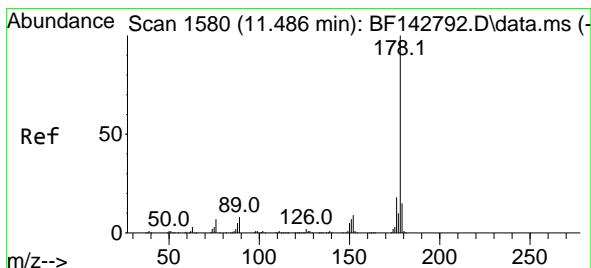
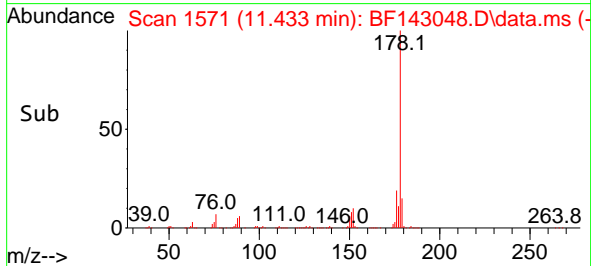
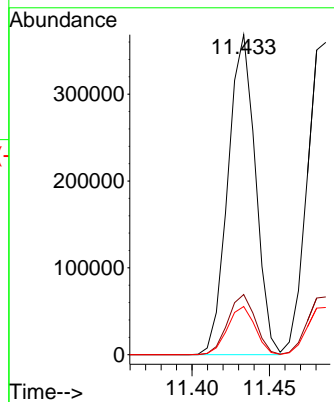
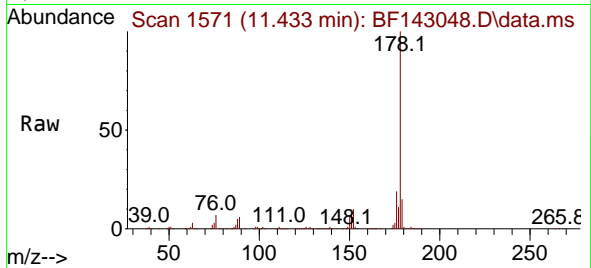




#71
 Phenanthrene
 Concen: 38.330 ng
 RT: 11.433 min Scan# 11
 Delta R.T. -0.006 min
 Lab File: BF143048.D
 Acq: 09 Jul 2025 10:52

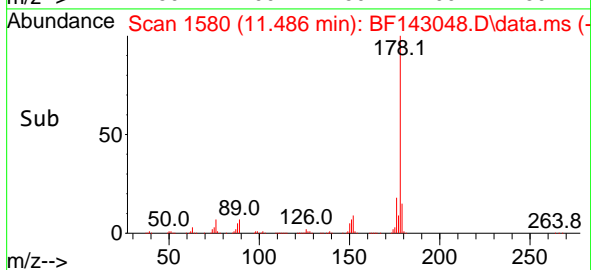
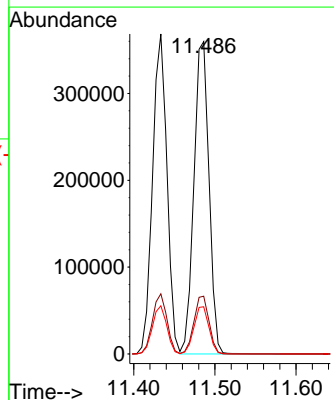
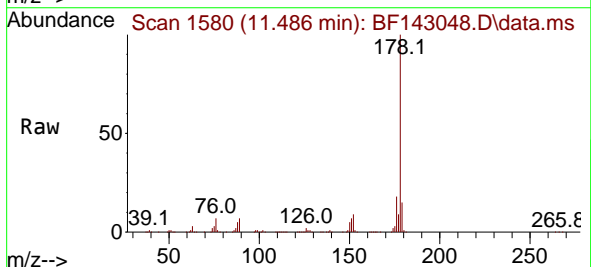
Instrument :
 BNA_F
 ClientSampleId :
 SSTDCCC040

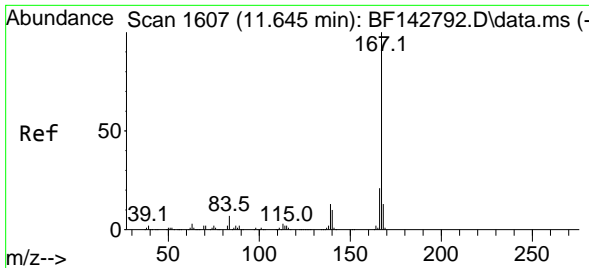
Tgt Ion:178 Resp: 453843
 Ion Ratio Lower Upper
 178 100
 176 18.8 15.1 22.7
 179 15.1 12.0 18.0



#72
 Anthracene
 Concen: 38.317 ng
 RT: 11.486 min Scan# 1580
 Delta R.T. 0.000 min
 Lab File: BF143048.D
 Acq: 09 Jul 2025 10:52

Tgt Ion:178 Resp: 465305
 Ion Ratio Lower Upper
 178 100
 176 18.5 14.6 21.8
 179 15.1 12.4 18.6



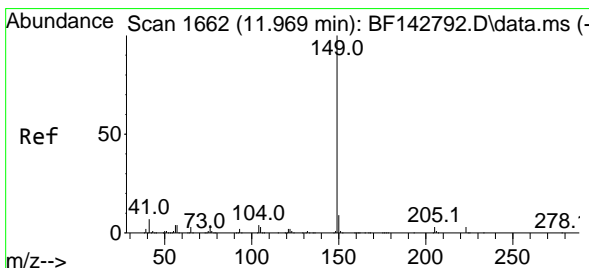
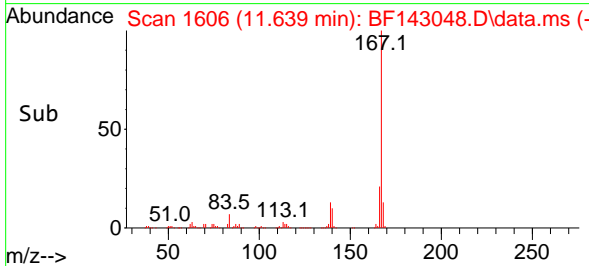
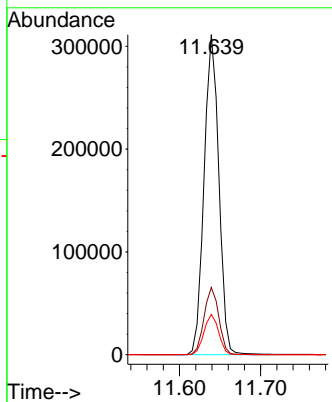
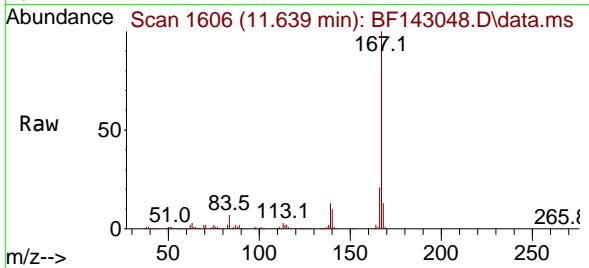


#73
 Carbazole
 Concen: 37.420 ng
 RT: 11.639 min Scan# 1606
 Delta R.T. -0.006 min
 Lab File: BF143048.D
 Acq: 09 Jul 2025 10:52

Instrument : BNA_F
 ClientSampleId : SSTDCCC040

Tgt Ion:167 Resp: 392132

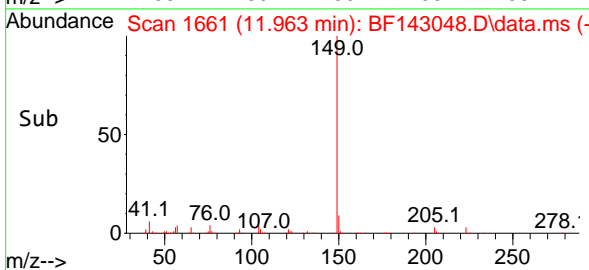
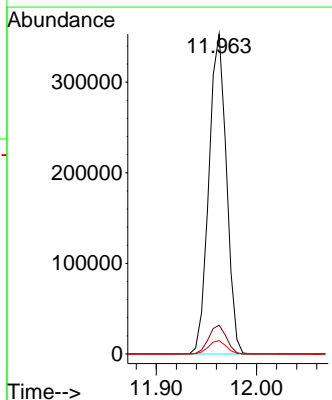
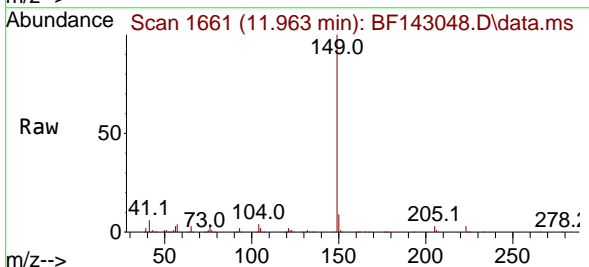
Ion	Ratio	Lower	Upper
167	100		
166	21.0	17.0	25.4
139	12.6	10.2	15.2

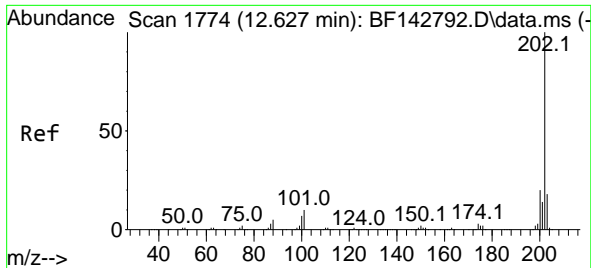


#74
 Di-n-butylphthalate
 Concen: 39.441 ng
 RT: 11.963 min Scan# 1661
 Delta R.T. -0.006 min
 Lab File: BF143048.D
 Acq: 09 Jul 2025 10:52

Tgt Ion:149 Resp: 430569

Ion	Ratio	Lower	Upper
149	100		
150	9.0	7.4	11.0
104	4.1	3.5	5.3



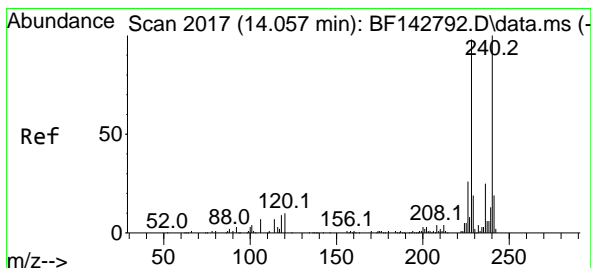
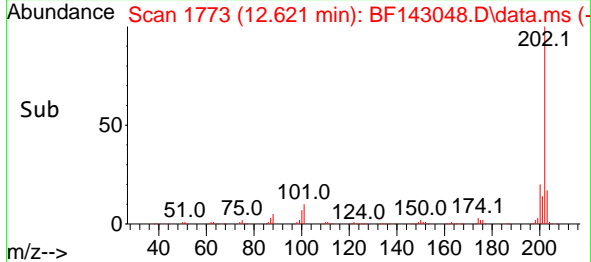
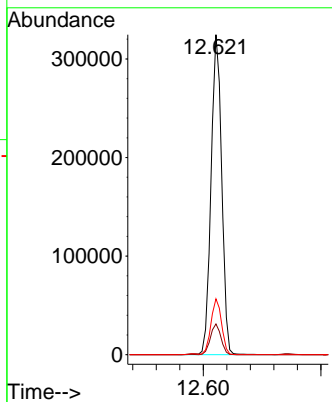
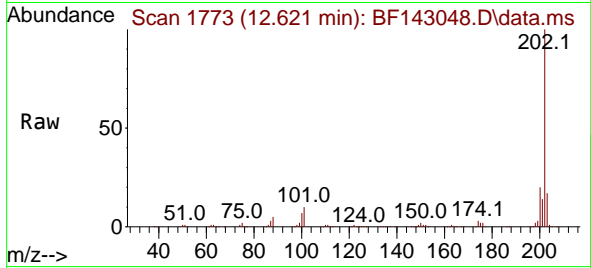


#75
 Fluoranthene
 Concen: 36.332 ng
 RT: 12.621 min Scan# 11
 Delta R.T. -0.006 min
 Lab File: BF143048.D
 Acq: 09 Jul 2025 10:52

Instrument :
 BNA_F
 ClientSampleId :
 SSTDCCC040

Tgt Ion: 202 Resp: 408276

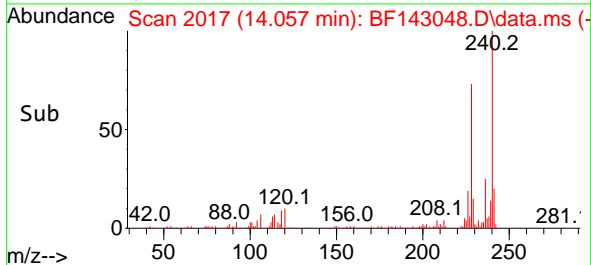
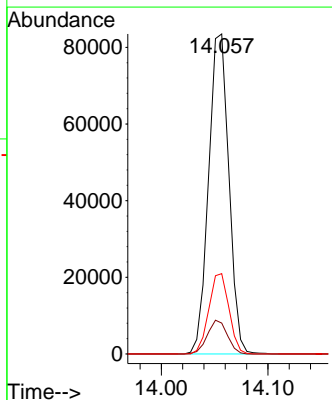
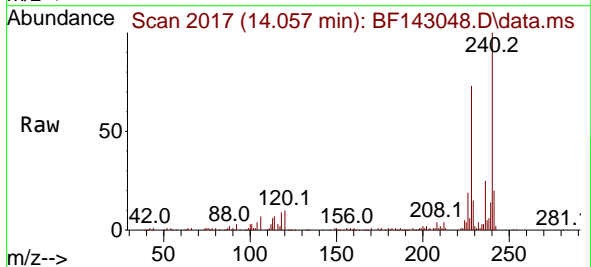
Ion	Ratio	Lower	Upper
202	100		
101	9.6	0.0	29.7
203	17.5	0.0	37.5

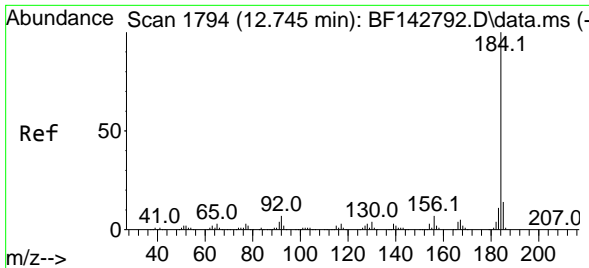


#76
 Chrysene-d12
 Concen: 20.000 ng
 RT: 14.057 min Scan# 2017
 Delta R.T. 0.000 min
 Lab File: BF143048.D
 Acq: 09 Jul 2025 10:52

Tgt Ion: 240 Resp: 110392

Ion	Ratio	Lower	Upper
240	100		
120	9.6	8.2	12.2
236	25.1	19.8	29.8



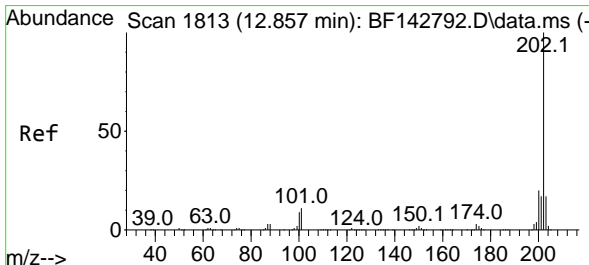
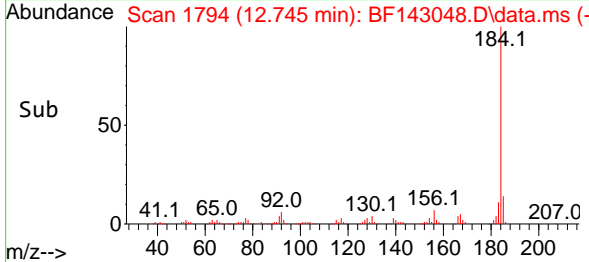
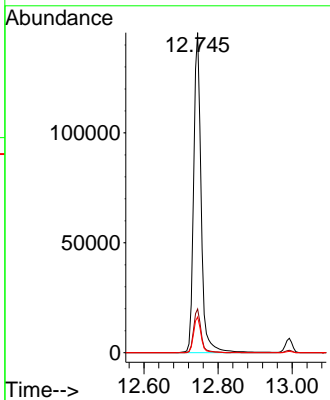
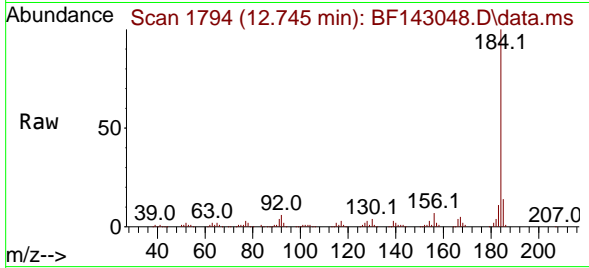


#77
 Benzidine
 Concen: 49.331 ng
 RT: 12.745 min Scan# 11
 Delta R.T. 0.000 min
 Lab File: BF143048.D
 Acq: 09 Jul 2025 10:52

Instrument : BNA_F
 ClientSampleId : SSTDCCC040

Tgt Ion:184 Resp: 204601

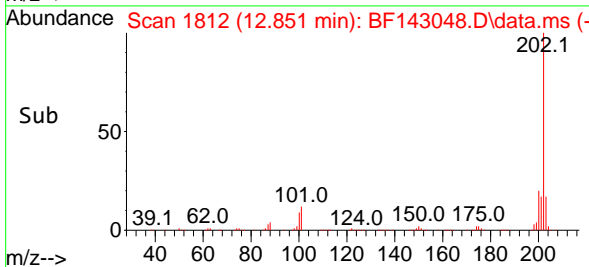
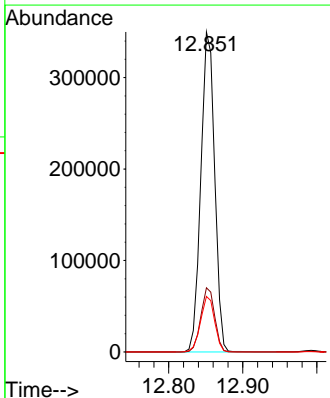
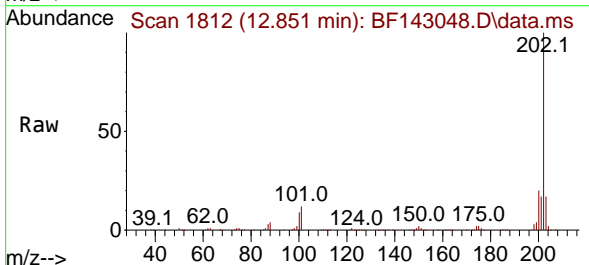
Ion	Ratio	Lower	Upper
184	100		
185	13.6	11.5	17.3
183	11.2	9.0	13.4

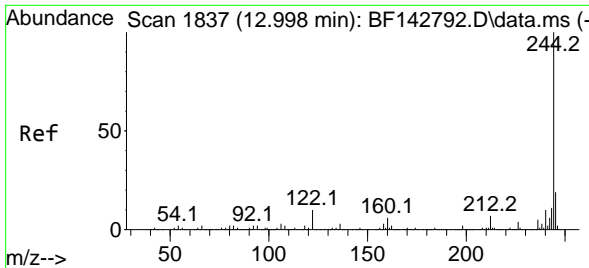


#78
 Pyrene
 Concen: 43.898 ng
 RT: 12.851 min Scan# 1812
 Delta R.T. -0.006 min
 Lab File: BF143048.D
 Acq: 09 Jul 2025 10:52

Tgt Ion:202 Resp: 454236

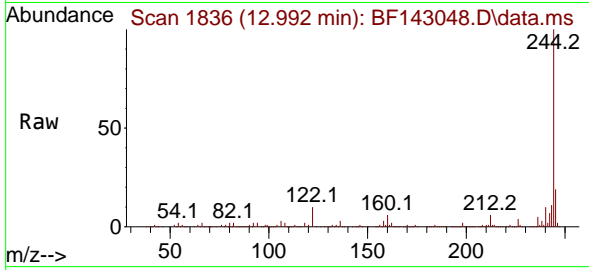
Ion	Ratio	Lower	Upper
202	100		
200	20.0	15.7	23.5
203	17.4	13.8	20.6



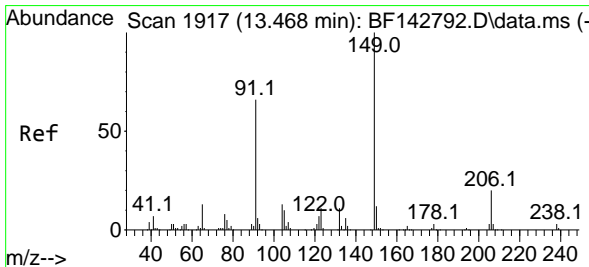
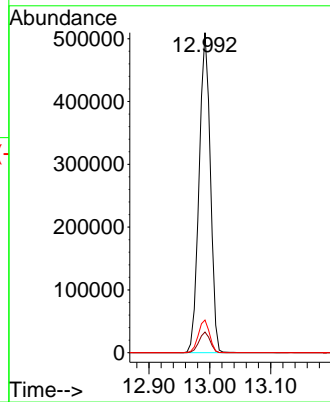
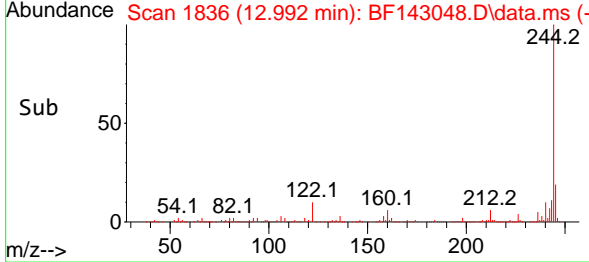


#79
 Terphenyl-d14
 Concen: 81.848 ng
 RT: 12.992 min Scan# 1836
 Delta R.T. -0.006 min
 Lab File: BF143048.D
 Acq: 09 Jul 2025 10:52

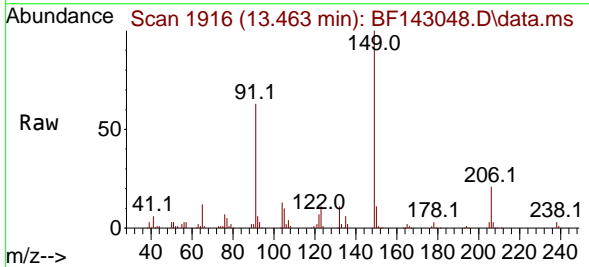
Instrument : BNA_F
 Client Sample Id : SSTDCCC040



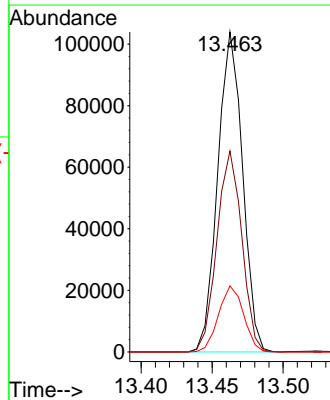
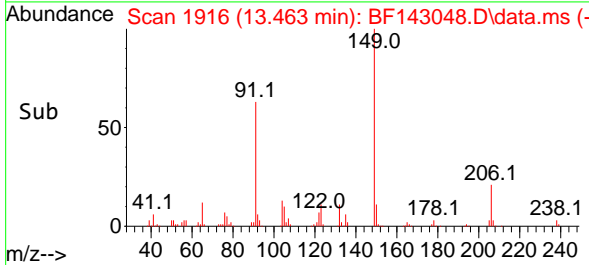
Tgt Ion:244 Resp: 653929
 Ion Ratio Lower Upper
 244 100
 212 6.5 5.4 8.0
 122 10.2 8.2 12.2

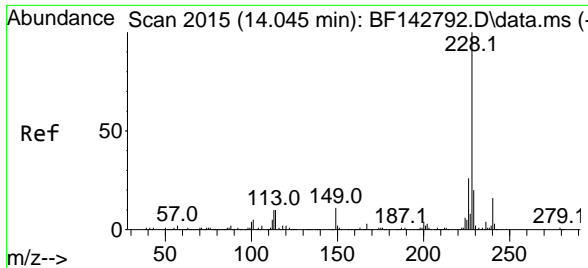


#80
 Butylbenzylphthalate
 Concen: 42.071 ng
 RT: 13.463 min Scan# 1916
 Delta R.T. -0.006 min
 Lab File: BF143048.D
 Acq: 09 Jul 2025 10:52



Tgt Ion:149 Resp: 126277
 Ion Ratio Lower Upper
 149 100
 91 62.8 52.9 79.3
 206 20.6 16.3 24.5



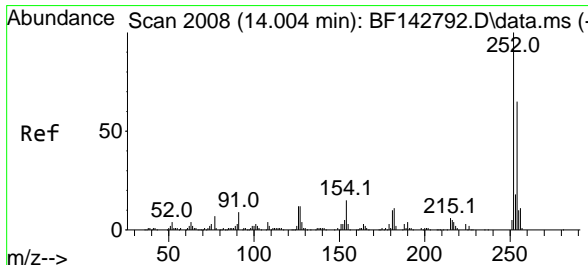
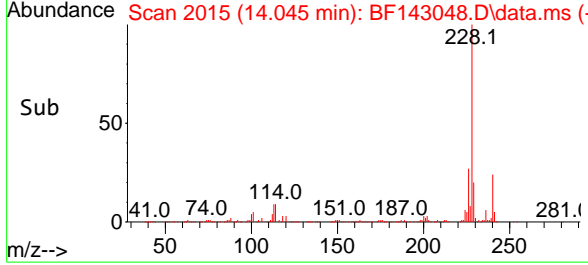
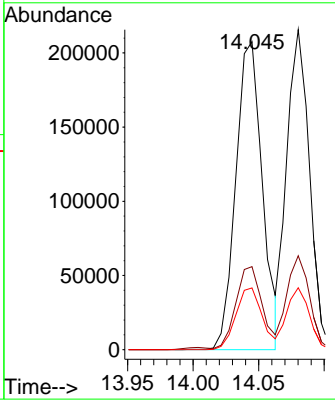
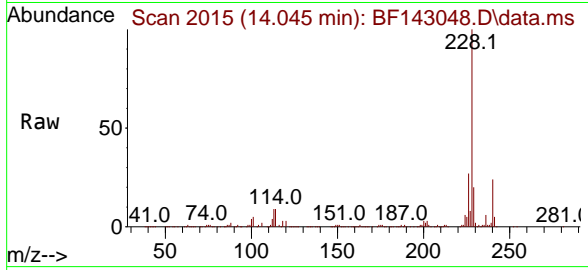


#81
 Benzo(a)anthracene
 Concen: 39.327 ng
 RT: 14.045 min Scan# 2015
 Delta R.T. 0.000 min
 Lab File: BF143048.D
 Acq: 09 Jul 2025 10:52

Instrument : BNA_F
 ClientSampleId : SSTDCCC040

Tgt Ion:228 Resp: 292876

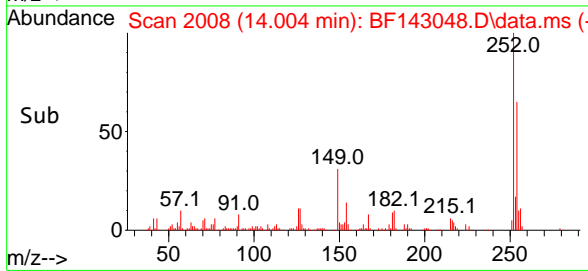
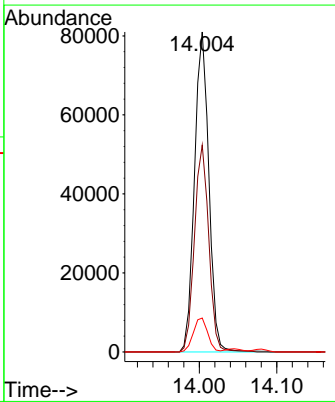
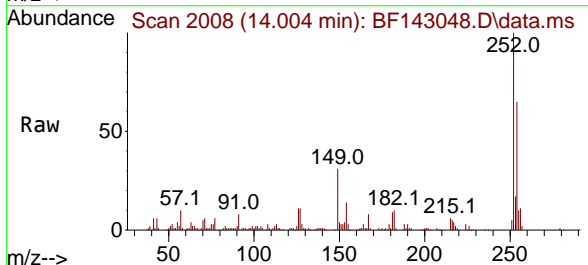
Ion	Ratio	Lower	Upper
228	100		
226	27.0	21.2	31.8
229	20.0	15.6	23.4

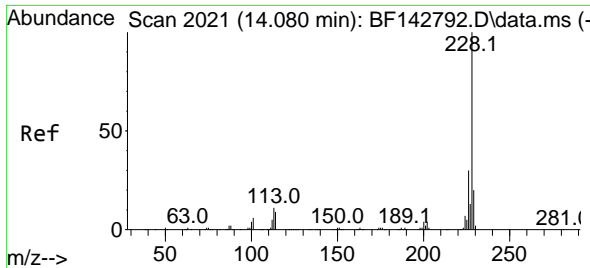


#82
 3,3'-Dichlorobenzidine
 Concen: 43.151 ng
 RT: 14.004 min Scan# 2008
 Delta R.T. 0.000 min
 Lab File: BF143048.D
 Acq: 09 Jul 2025 10:52

Tgt Ion:252 Resp: 104231

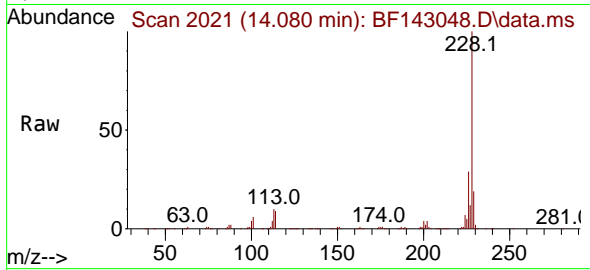
Ion	Ratio	Lower	Upper
252	100		
254	64.6	51.7	77.5
126	10.6	9.4	14.2



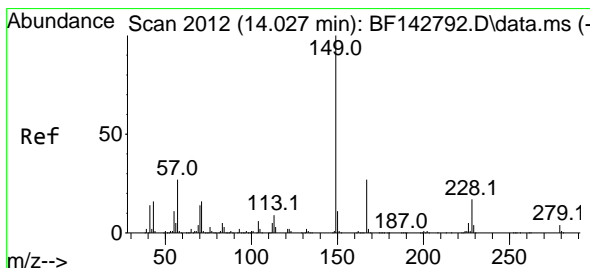
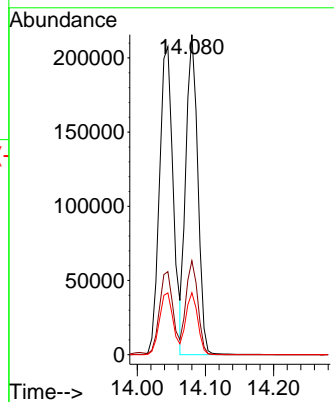
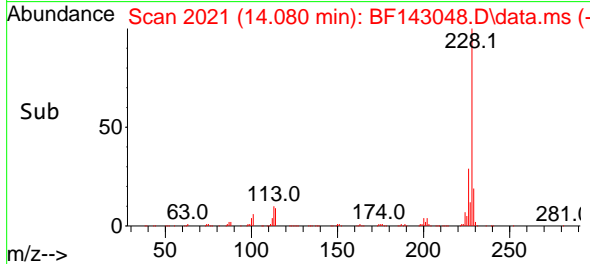


#83
 Chrysene
 Concen: 39.162 ng
 RT: 14.080 min Scan# 2011
 Delta R.T. 0.000 min
 Lab File: BF143048.D
 Acq: 09 Jul 2025 10:52

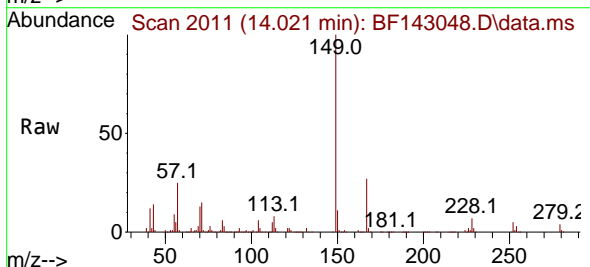
Instrument :
 BNA_F
 ClientSampleId :
 SSTDCCC040



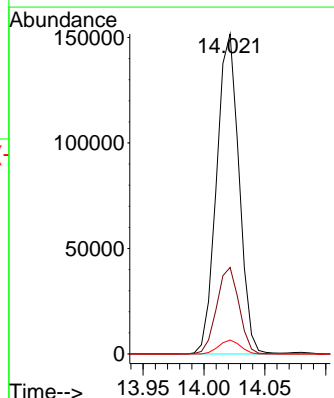
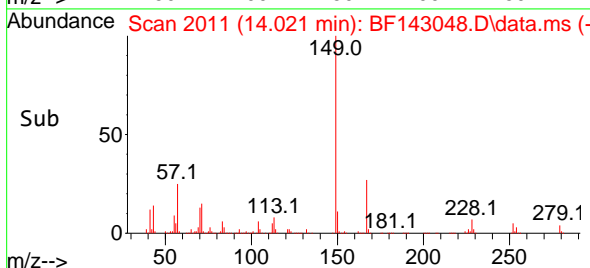
Tgt Ion:228 Resp: 260242
 Ion Ratio Lower Upper
 228 100
 226 29.4 23.7 35.5
 229 19.3 15.7 23.5

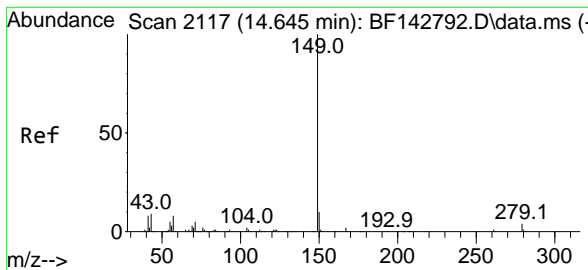


#84
 Bis(2-ethylhexyl)phthalate
 Concen: 45.039 ng
 RT: 14.021 min Scan# 2011
 Delta R.T. -0.006 min
 Lab File: BF143048.D
 Acq: 09 Jul 2025 10:52



Tgt Ion:149 Resp: 194503
 Ion Ratio Lower Upper
 149 100
 167 27.1 21.4 32.0
 279 4.3 3.0 4.6



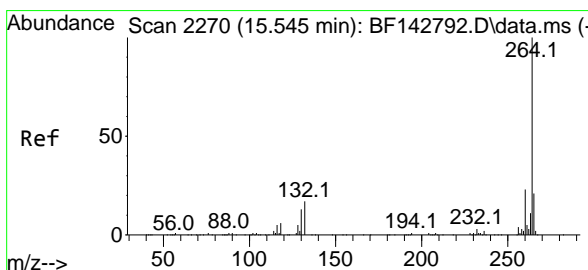
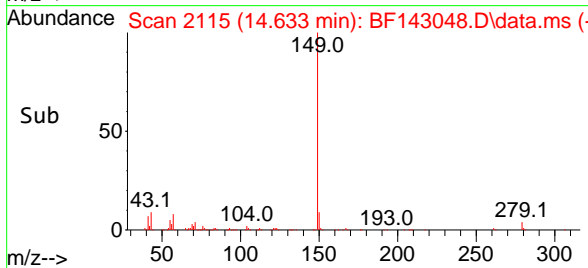
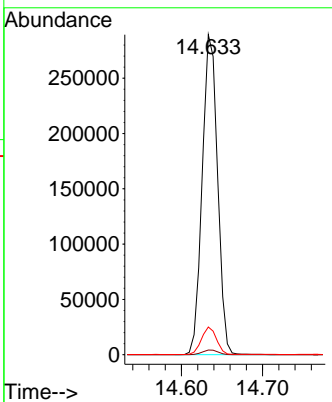
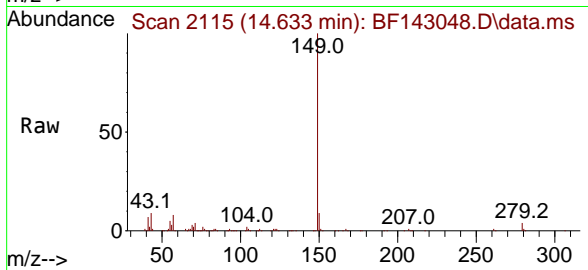


#85
 Di-n-octyl phthalate
 Concen: 46.544 ng
 RT: 14.633 min Scan# 2115
 Delta R.T. -0.012 min
 Lab File: BF143048.D
 Acq: 09 Jul 2025 10:52

Instrument : BNA_F
 ClientSampleId : SSTDCCC040

Tgt Ion:149 Resp: 379015

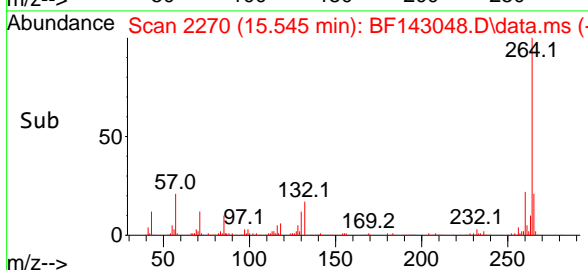
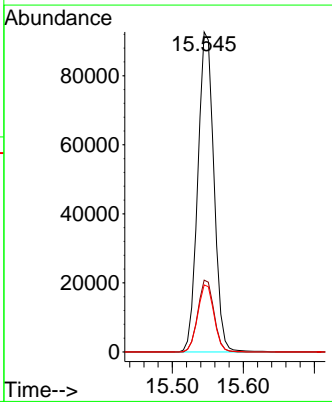
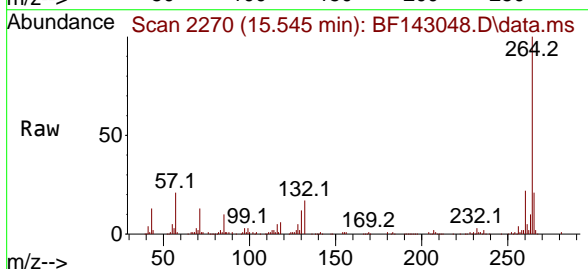
Ion	Ratio	Lower	Upper
149	100		
167	1.5	1.3	1.9
43	8.4	7.6	11.4

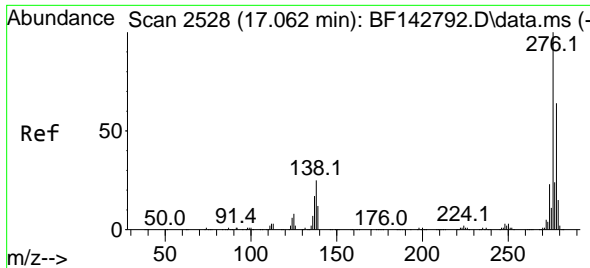


#86
 Perylene-d12
 Concen: 20.000 ng
 RT: 15.545 min Scan# 2270
 Delta R.T. 0.000 min
 Lab File: BF143048.D
 Acq: 09 Jul 2025 10:52

Tgt Ion:264 Resp: 146270

Ion	Ratio	Lower	Upper
264	100		
260	22.5	18.1	27.1
265	21.0	16.6	25.0





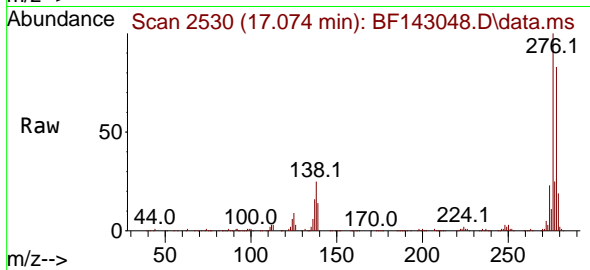
#87
 Indeno(1,2,3-cd)pyrene
 Concen: 38.135 ng
 RT: 17.074 min Scan# 2196
 Delta R.T. 0.012 min
 Lab File: BF143048.D
 Acq: 09 Jul 2025 10:52

Instrument :

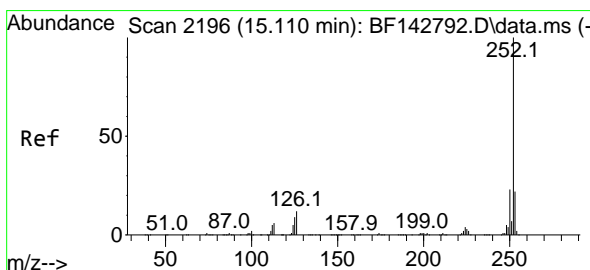
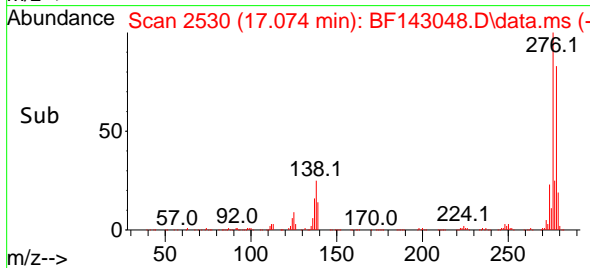
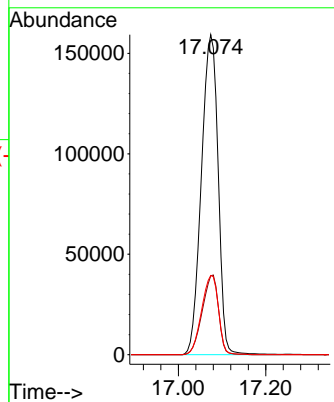
BNA_F

ClientSampleId :

SSTDCCC040

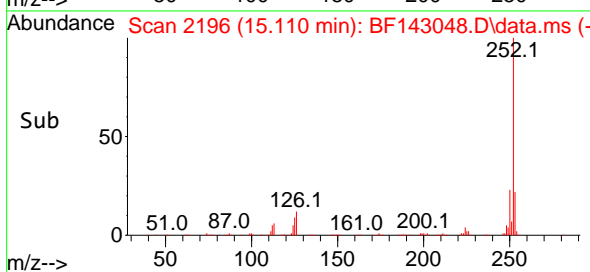
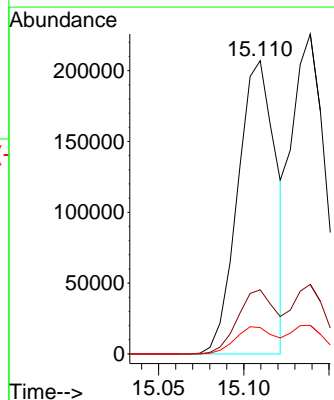
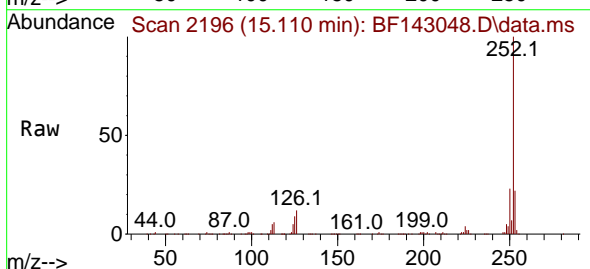


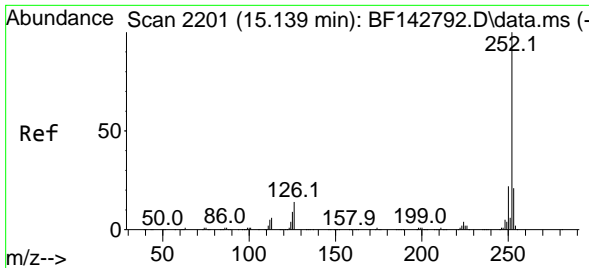
Tgt Ion:276 Resp: 424870
 Ion Ratio Lower Upper
 276 100
 138 24.1 20.2 30.4
 277 24.9 19.8 29.6



#88
 Benzo(b)fluoranthene
 Concen: 38.041 ng
 RT: 15.110 min Scan# 2196
 Delta R.T. 0.000 min
 Lab File: BF143048.D
 Acq: 09 Jul 2025 10:52

Tgt Ion:252 Resp: 321973
 Ion Ratio Lower Upper
 252 100
 253 21.9 17.5 26.3
 125 9.0 7.4 11.0



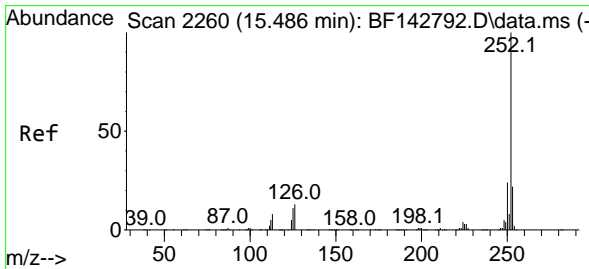
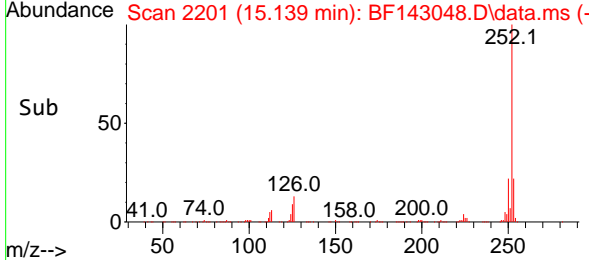
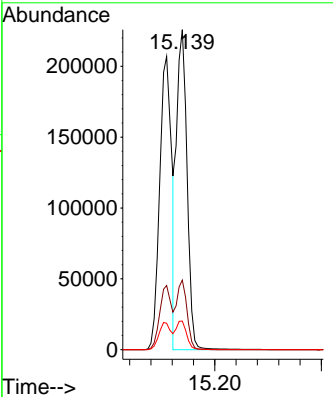
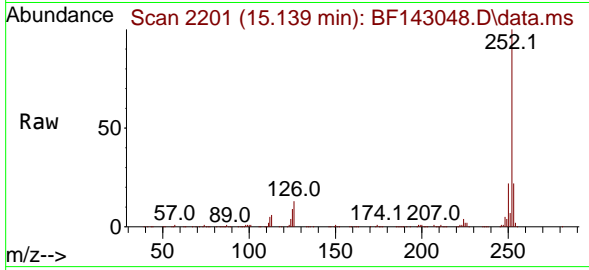


#89
 Benzo(k)fluoranthene
 Concen: 39.092 ng
 RT: 15.139 min Scan# 21
 Delta R.T. 0.000 min
 Lab File: BF143048.D
 Acq: 09 Jul 2025 10:52

Instrument : BNA_F
 Client Sample Id : SSTDCCC040

Tgt Ion:252 Resp: 309552

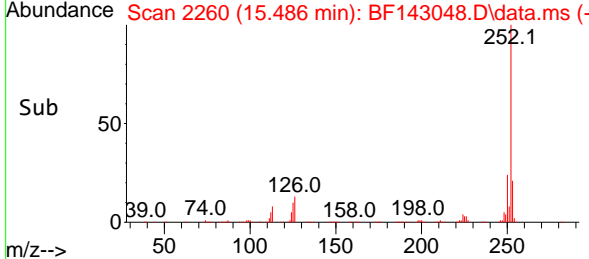
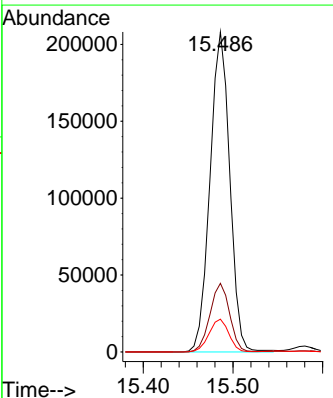
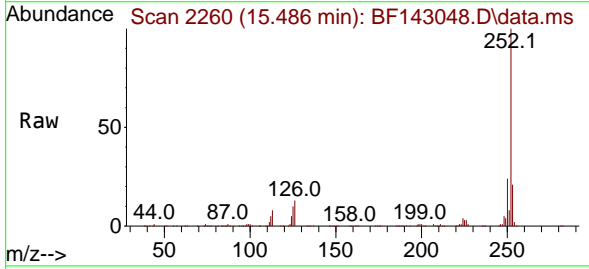
Ion	Ratio	Lower	Upper
252	100		
253	21.7	17.2	25.8
125	9.0	7.4	11.2

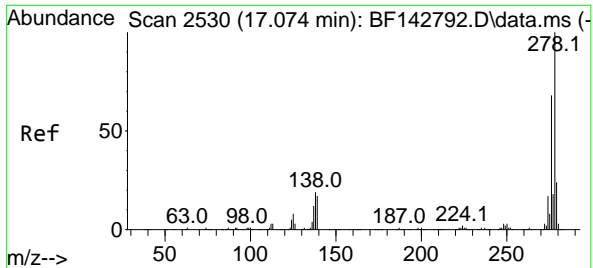


#90
 Benzo(a)pyrene
 Concen: 38.867 ng
 RT: 15.486 min Scan# 2260
 Delta R.T. 0.000 min
 Lab File: BF143048.D
 Acq: 09 Jul 2025 10:52

Tgt Ion:252 Resp: 317799

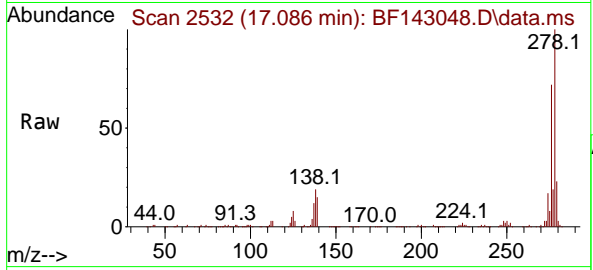
Ion	Ratio	Lower	Upper
252	100		
253	21.4	17.5	26.3
125	10.2	8.6	12.8



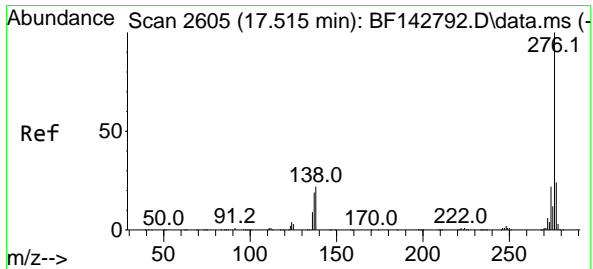
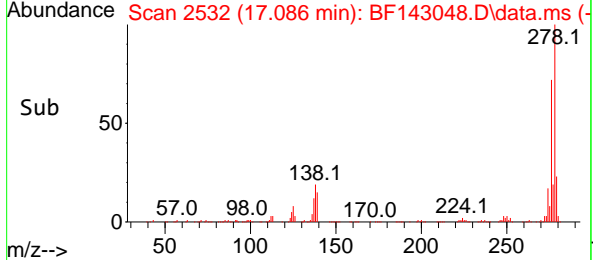
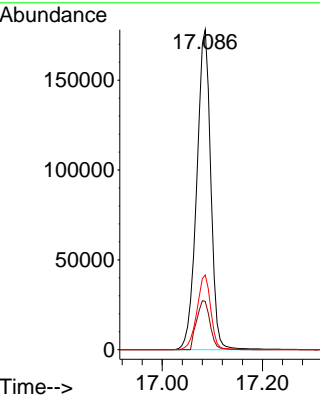


#91
 Dibenzo(a,h)anthracene
 Concen: 38.156 ng
 RT: 17.086 min Scan# 21
 Delta R.T. 0.012 min
 Lab File: BF143048.D
 Acq: 09 Jul 2025 10:52

Instrument : BNA_F
 ClientSampleId : SSTDCCC040



Tgt Ion:278 Resp: 345409
 Ion Ratio Lower Upper
 278 100
 139 15.1 13.5 20.3
 279 23.4 18.8 28.2



#92
 Benzo(g,h,i)perylene
 Concen: 37.626 ng
 RT: 17.533 min Scan# 2608
 Delta R.T. 0.018 min
 Lab File: BF143048.D
 Acq: 09 Jul 2025 10:52

Tgt Ion:276 Resp: 339644
 Ion Ratio Lower Upper
 276 100
 277 22.8 18.8 28.2
 138 20.2 17.6 26.4

