

Data Path : Z:\svoasrv\HPCHEM1\BNA_P\Data\BP070325\
 Data File : BP025075.D
 Acq On : 03 Jul 2025 12:25
 Operator : CG/JU
 Sample : SSTDICCC040
 Misc :
 ALS Vial : 6 Sample Multiplier: 1

Instrument :
 BNA_P
 ClientSampleId :
 SSTDICCC040

Quant Time: Jul 03 15:53:52 2025
 Quant Method : Z:\svoasrv\HPCHEM1\BNA_P\Methods\8270E-BP070325.M
 Quant Title : ASP BNA STANDARDS FOR 5 POINT CALIBRATION
 QLast Update : Thu Jul 03 15:38:19 2025
 Response via : Initial Calibration

Compound	R.T.	QIon	Response	Conc	Units	Dev(Min)	
Internal Standards							
1) 1,4-Dichlorobenzene-d4	7.443	152	390810	20.000	ng	0.00	
21) Naphthalene-d8	10.184	136	1560152	20.000	ng	0.00	
39) Acenaphthene-d10	14.089	164	1003103	20.000	ng	0.00	
64) Phenanthrene-d10	16.907	188	2062708	20.000	ng	0.00	
76) Chrysene-d12	21.342	240	2262594	20.000	ng	0.00	
86) Perylene-d12	24.495	264	2431657	20.000	ng	0.00	
System Monitoring Compounds							
5) 2-Fluorophenol	5.096	112	1772070	80.342	ng	0.00	
7) Phenol-d6	6.631	99	2279753	79.204	ng	0.00	
23) Nitrobenzene-d5	8.566	82	1914639	81.616	ng	0.00	
42) 2,4,6-Tribromophenol	15.619	330	987112	83.301	ng	0.00	
45) 2-Fluorobiphenyl	12.695	172	5132522	79.265	ng	0.00	
79) Terphenyl-d14	19.672	244	8276493	80.394	ng	0.00	
Target Compounds							
2) 1,4-Dioxane	3.125	88	339998	39.642	ng	100	Qvalue
3) Pyridine	3.490	79	959760	40.903	ng	100	
4) n-Nitrosodimethylamine	3.408	42	395498	39.780	ng	100	
6) Aniline	6.784	93	1084746	40.335	ng	100	
8) 2-Chlorophenol	7.019	128	981576	39.775	ng	100	
9) Benzaldehyde	6.602	77	565720	37.634	ng	100	
10) Phenol	6.655	94	1150792	39.348	ng	100	
11) bis(2-Chloroethyl)ether	6.890	93	876880	38.958	ng	100	
12) 1,3-Dichlorobenzene	7.337	146	1077716	39.020	ng	100	
13) 1,4-Dichlorobenzene	7.472	146	1093628	39.109	ng	100	
14) 1,2-Dichlorobenzene	7.784	146	1054645	39.206	ng	100	
15) Benzyl Alcohol	7.672	79	748226	38.947	ng	100	
16) 2,2'-oxybis(1-Chloropr...	7.966	45	1120385	38.282	ng	100	
17) 2-Methylphenol	7.872	107	757253	40.195	ng	100	
18) Hexachloroethane	8.496	117	359924	39.510	ng	100	
19) n-Nitroso-di-n-propyla...	8.237	70	676070	39.605	ng	100	
20) 3+4-Methylphenols	8.196	107	1042619	39.511	ng	100	
22) Acetophenone	8.243	105	1451215	39.332	ng	100	
24) Nitrobenzene	8.607	77	966724	40.457	ng	100	
25) Isophorone	9.131	82	1742244	39.740	ng	100	
26) 2-Nitrophenol	9.313	139	416304	36.734	ng	100	
27) 2,4-Dimethylphenol	9.384	122	649221	39.698	ng	100	
28) bis(2-Chloroethoxy)met...	9.619	93	1166063	39.172	ng	100	
29) 2,4-Dichlorophenol	9.837	162	932551	41.124	ng	100	
30) 1,2,4-Trichlorobenzene	10.060	180	995067	39.625	ng	100	
31) Naphthalene	10.231	128	3155257	39.276	ng	100	
32) Benzoic acid	9.501	122	581334	38.533	ng	100	
33) 4-Chloroaniline	10.343	127	1217057	40.595	ng	100	
34) Hexachlorobutadiene	10.537	225	567921	39.409	ng	100	
35) Caprolactam	11.107	113	313947	40.469	ng	100	
36) 4-Chloro-3-methylphenol	11.484	107	965263	40.733	ng	100	
37) 2-Methylnaphthalene	11.860	142	2240648	39.530	ng	100	
38) 1-Methylnaphthalene	12.084	142	2158945	39.054	ng	100	
40) 1,2,4,5-Tetrachloroben...	12.243	216	1164588	40.396	ng	100	
41) Hexachlorocyclopentadiene	12.237	237	298913	39.695	ng	100	
43) 2,4,6-Trichlorophenol	12.484	196	741839	42.497	ng	100	

Data Path : Z:\svoasrv\HPCHEM1\BNA_P\Data\BP070325\
 Data File : BP025075.D
 Acq On : 03 Jul 2025 12:25
 Operator : CG/JU
 Sample : SSTDICCC040
 Misc :
 ALS Vial : 6 Sample Multiplier: 1

Instrument :
 BNA_P
 ClientSampleId :
 SSTDICCC040

Quant Time: Jul 03 15:53:52 2025
 Quant Method : Z:\svoasrv\HPCHEM1\BNA_P\Methods\8270E-BP070325.M
 Quant Title : ASP BNA STANDARDS FOR 5 POINT CALIBRATION
 QLast Update : Thu Jul 03 15:38:19 2025
 Response via : Initial Calibration

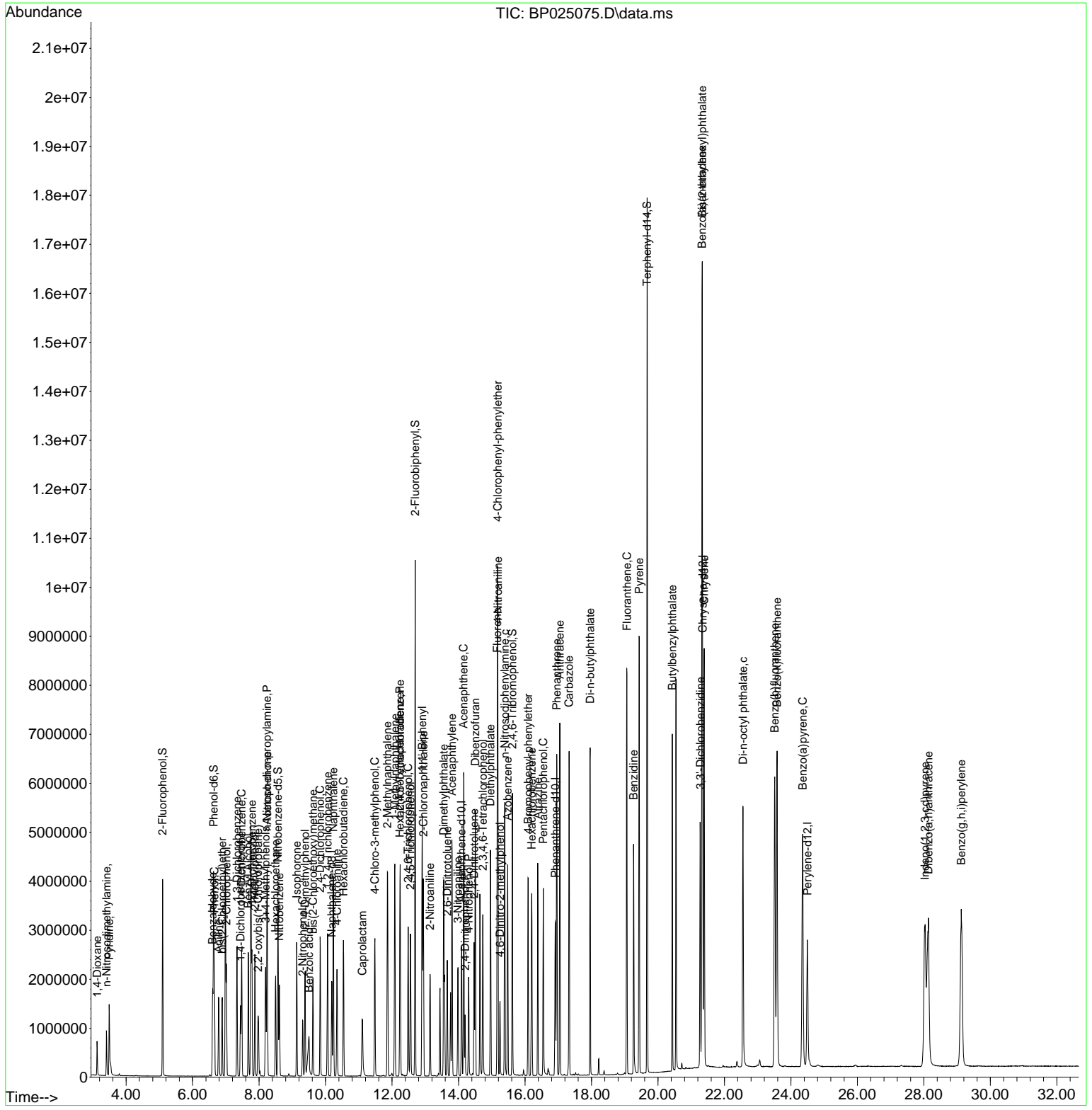
Compound	R.T.	QIon	Response	Conc	Units	Dev(Min)
44) 2,4,5-Trichlorophenol	12.554	196	824324	41.668	ng	100
46) 1,1'-Biphenyl	12.907	154	2916222	39.957	ng	100
47) 2-Chloronaphthalene	12.942	162	2188234	39.891	ng	100
48) 2-Nitroaniline	13.142	65	519267	39.182	ng	100
49) Acenaphthylene	13.801	152	3413485	40.657	ng	100
50) Dimethylphthalate	13.554	163	2825141	40.234	ng	100
51) 2,6-Dinitrotoluene	13.660	165	592325	43.253	ng	100
52) Acenaphthene	14.154	154	2139419	39.537	ng	100
53) 3-Nitroaniline	13.984	138	644835	43.937	ng	100
54) 2,4-Dinitrophenol	14.195	184	234827	38.110	ng	100
55) Dibenzofuran	14.507	168	3547100	39.719	ng	100
56) 4-Nitrophenol	14.301	139	572405	42.263	ng	100
57) 2,4-Dinitrotoluene	14.466	165	785486	39.572	ng	100
58) Fluorene	15.166	166	2794372	40.454	ng	100
59) 2,3,4,6-Tetrachlorophenol	14.731	232	742726	41.458	ng	100
60) Diethylphthalate	14.960	149	2866041	40.639	ng	100
61) 4-Chlorophenyl-phenyle...	15.178	204	1361531	39.829	ng	100
62) 4-Nitroaniline	15.184	138	686633	44.618	ng	100
63) Azobenzene	15.478	77	2537142	40.400	ng	100
65) 4,6-Dinitro-2-methylph...	15.248	198	335740	37.190	ng	100
66) n-Nitrosodiphenylamine	15.389	169	2365317	40.069	ng	100
67) 4-Bromophenyl-phenylether	16.095	248	843967	39.961	ng	100
68) Hexachlorobenzene	16.201	284	1020715	39.541	ng	100
69) Atrazine	16.383	200	711320	41.121	ng	100
70) Pentachlorophenol	16.548	266	707874	40.604	ng	100
71) Phenanthrene	16.954	178	4407982	39.993	ng	100
72) Anthracene	17.048	178	4275492	40.434	ng	100
73) Carbazole	17.325	167	4245502	41.064	ng	100
74) Di-n-butylphthalate	17.960	149	4897263	42.536	ng	100
75) Fluoranthene	19.066	202	5320900	41.300	ng	100
77) Benzidine	19.266	184	2584906	64.686	ng	100
78) Pyrene	19.436	202	5572652	39.765	ng	100
80) Butylbenzylphthalate	20.430	149	1993151	37.765	ng	100
81) Benzo(a)anthracene	21.324	228	5507840	40.169	ng	100
82) 3,3'-Dichlorobenzidine	21.271	252	1763991	42.735	ng	100
83) Chrysene	21.389	228	5244045	39.742	ng	100
84) Bis(2-ethylhexyl)phtha...	21.330	149	3179611	43.232	ng	100
85) Di-n-octyl phthalate	22.560	149	4951836	38.152	ng	100
87) Indeno(1,2,3-cd)pyrene	28.036	276	5496761	35.475	ng	93
88) Benzo(b)fluoranthene	23.512	252	5839482	41.258	ng	100
89) Benzo(k)fluoranthene	23.583	252	5609534	39.833	ng	100
90) Benzo(a)pyrene	24.354	252	5022829	41.697	ng	100
91) Dibenzo(a,h)anthracene	28.136	278	5336147	41.673	ng	100
92) Benzo(g,h,i)perylene	29.124	276	5482072	41.443	ng	100

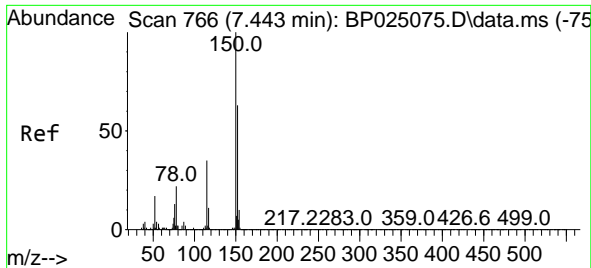
(#) = qualifier out of range (m) = manual integration (+) = signals summed

Data Path : Z:\svoasrv\HPCHEM1\BNA_P\Data\BP070325\
 Data File : BP025075.D
 Acq On : 03 Jul 2025 12:25
 Operator : CG/JU
 Sample : SSTDICCC040
 Misc :
 ALS Vial : 6 Sample Multiplier: 1

Instrument :
 BNA_P
ClientSampleId :
 SSTDICCC040

Quant Time: Jul 03 15:53:52 2025
 Quant Method : Z:\svoasrv\HPCHEM1\BNA_P\Methods\8270E-BP070325.M
 Quant Title : ASP BNA STANDARDS FOR 5 POINT CALIBRATION
 QLast Update : Thu Jul 03 15:38:19 2025
 Response via : Initial Calibration

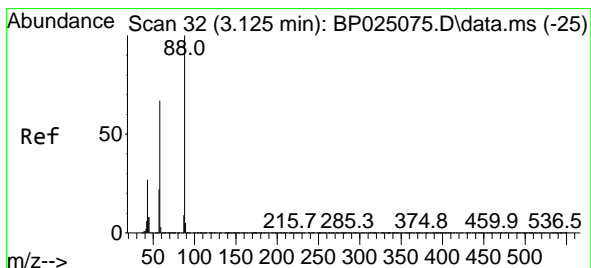
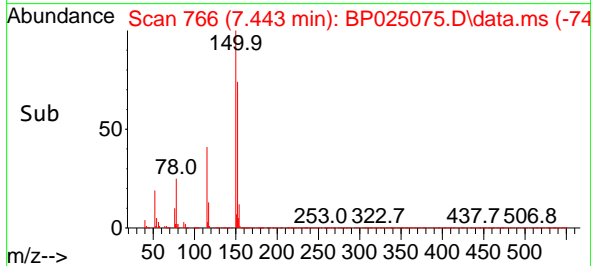
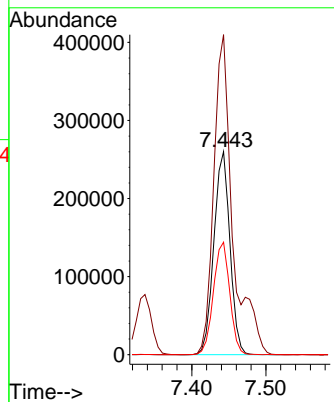
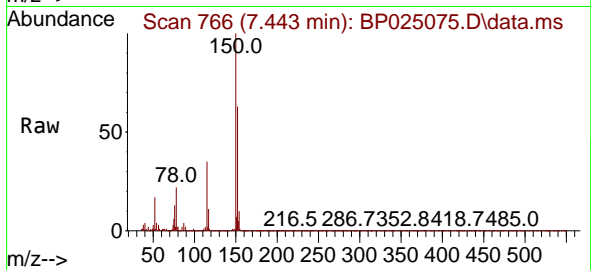




#1
 1,4-Dichlorobenzene-d4
 Concen: 20.000 ng
 RT: 7.443 min Scan# 70
 Delta R.T. -0.000 min
 Lab File: BP025075.D
 Acq: 03 Jul 2025 12:25

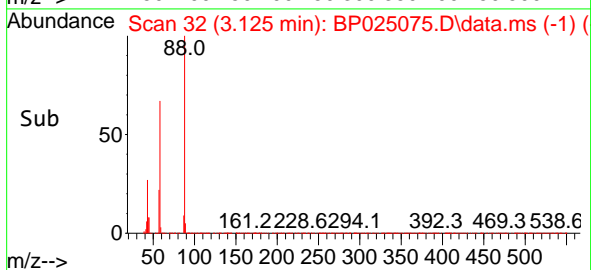
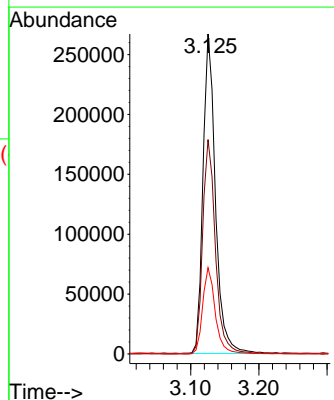
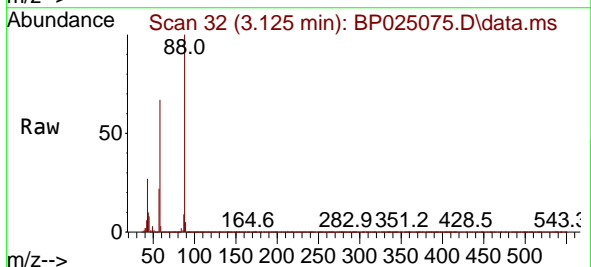
Instrument :
 BNA_P
 ClientSampleId :
 SSTDICCC040

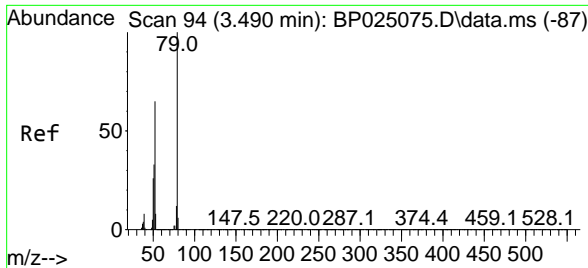
Tgt Ion:152 Resp: 390810
 Ion Ratio Lower Upper
 152 100
 150 157.6 126.1 189.1
 115 55.4 44.3 66.5



#2
 1,4-Dioxane
 Concen: 39.642 ng
 RT: 3.125 min Scan# 32
 Delta R.T. 0.000 min
 Lab File: BP025075.D
 Acq: 03 Jul 2025 12:25

Tgt Ion: 88 Resp: 339998
 Ion Ratio Lower Upper
 88 100
 58 68.7 55.0 82.4
 43 27.4 21.9 32.9



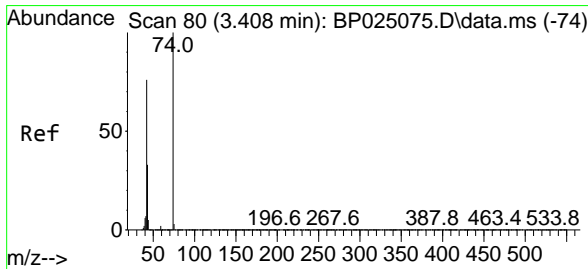
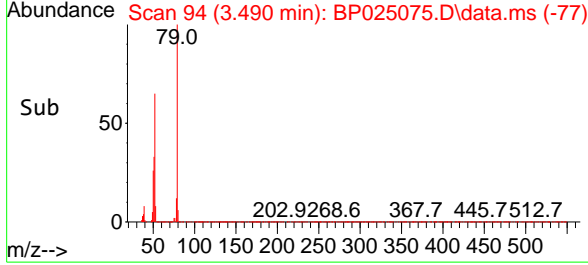
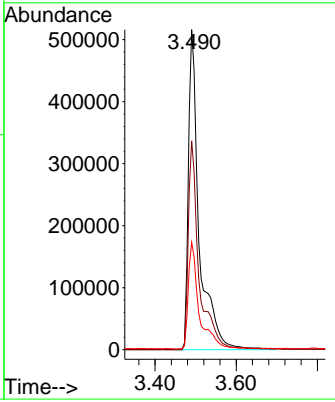
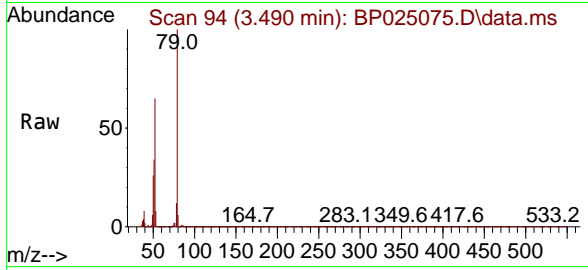


#3
 Pyridine
 Concen: 40.903 ng
 RT: 3.490 min Scan# 94
 Delta R.T. 0.000 min
 Lab File: BP025075.D
 Acq: 03 Jul 2025 12:25

Instrument : BNA_P
 ClientSampleId : SSTDICCC040

Tgt Ion: 79 Resp: 959760

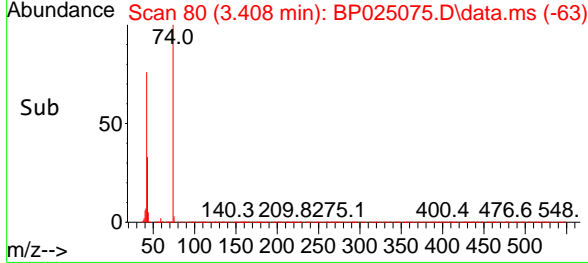
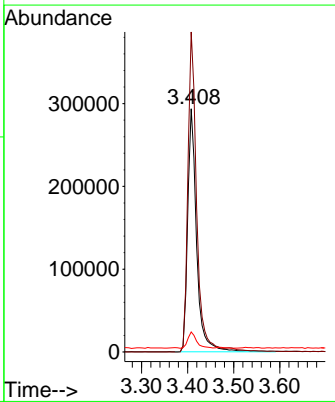
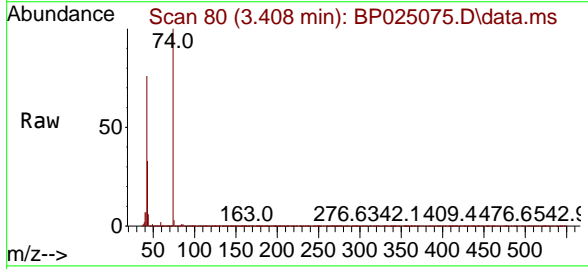
Ion	Ratio	Lower	Upper
79	100		
52	65.3	52.2	78.4
51	33.5	26.8	40.2

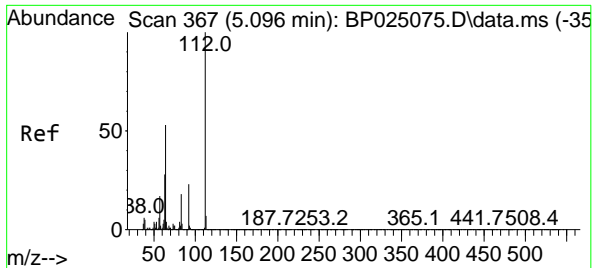


#4
 n-Nitrosodimethylamine
 Concen: 39.780 ng
 RT: 3.408 min Scan# 80
 Delta R.T. 0.000 min
 Lab File: BP025075.D
 Acq: 03 Jul 2025 12:25

Tgt Ion: 42 Resp: 395498

Ion	Ratio	Lower	Upper
42	100		
74	131.5	105.2	157.8
44	8.2	6.6	9.8



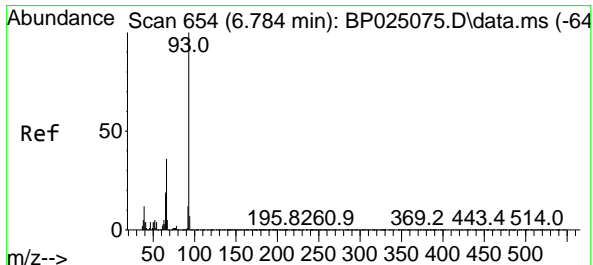
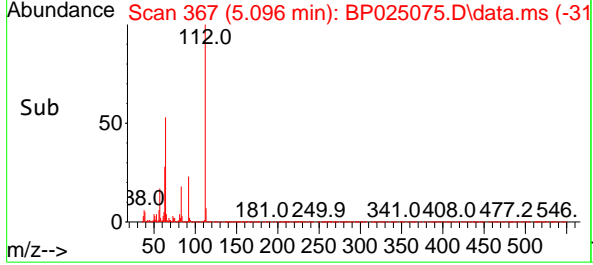
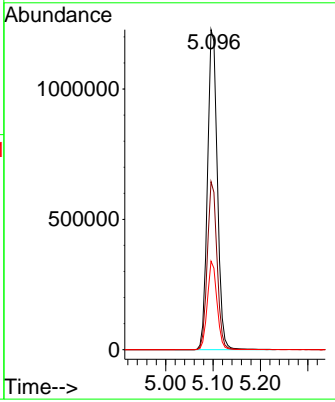
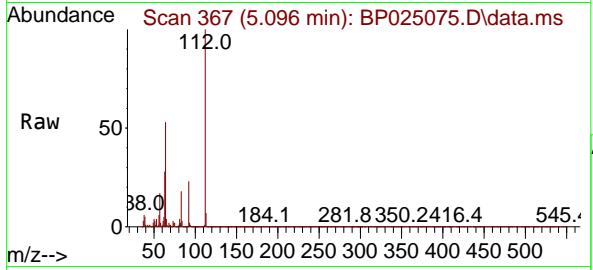


#5
 2-Fluorophenol
 Concen: 80.342 ng
 RT: 5.096 min Scan# 30
 Delta R.T. 0.000 min
 Lab File: BP025075.D
 Acq: 03 Jul 2025 12:25

Instrument : BNA_P
 ClientSampleId : SSTDICCC040

Tgt Ion: 112 Resp: 1772070

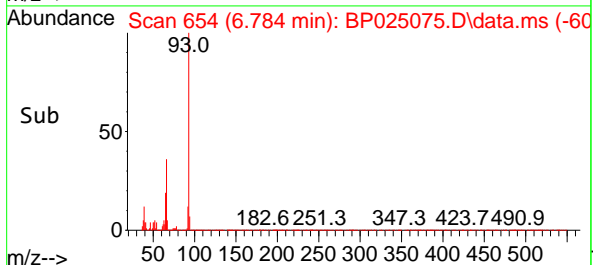
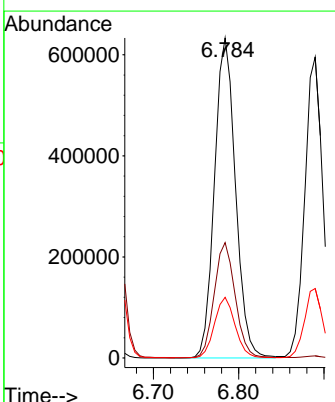
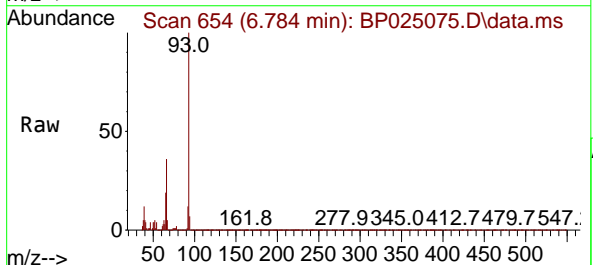
Ion	Ratio	Lower	Upper
112	100		
64	52.5	42.0	63.0
63	27.7	22.2	33.2

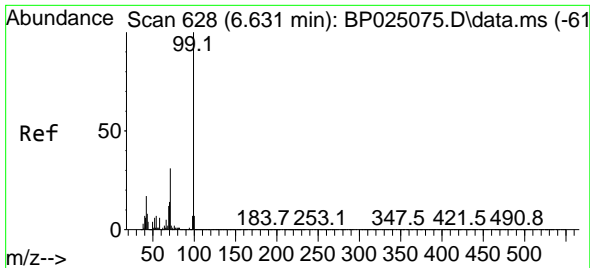


#6
 Aniline
 Concen: 40.335 ng
 RT: 6.784 min Scan# 654
 Delta R.T. 0.000 min
 Lab File: BP025075.D
 Acq: 03 Jul 2025 12:25

Tgt Ion: 93 Resp: 1084746

Ion	Ratio	Lower	Upper
93	100		
66	36.1	28.9	43.3
65	19.0	15.2	22.8



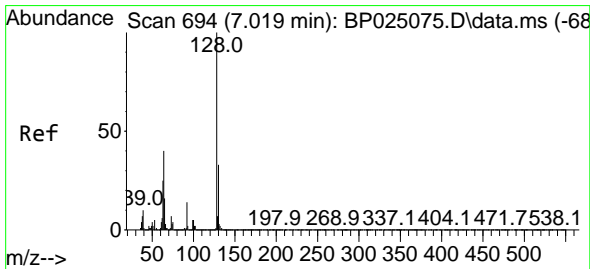
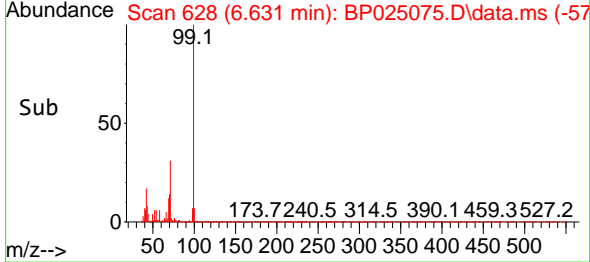
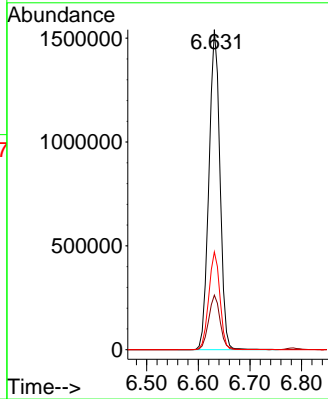
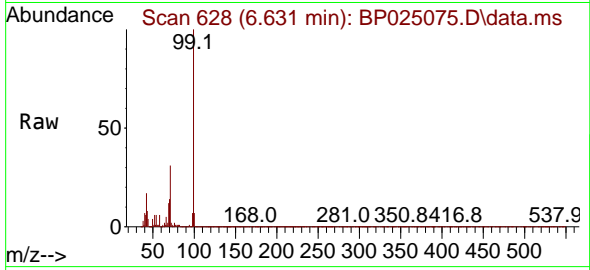


#7
 Phenol-d6
 Concen: 79.204 ng
 RT: 6.631 min Scan# 61
 Delta R.T. 0.000 min
 Lab File: BP025075.D
 Acq: 03 Jul 2025 12:25

Instrument :
 BNA_P
 ClientSampleId :
 SSTDICC040

Tgt Ion: 99 Resp: 2279753

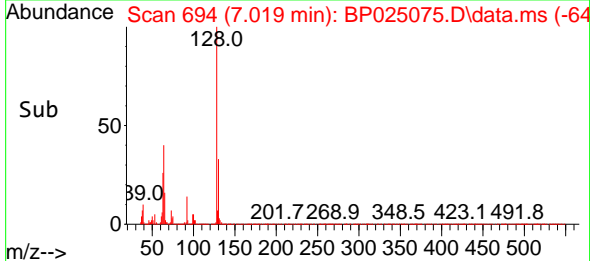
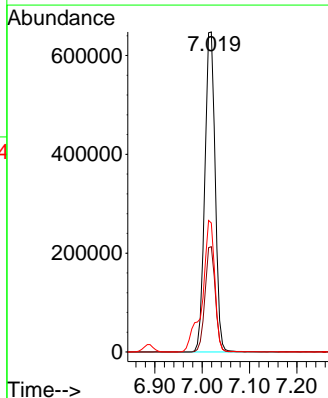
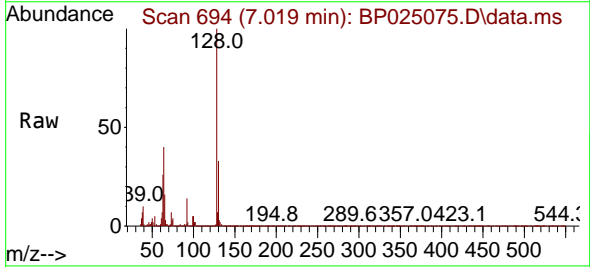
Ion	Ratio	Lower	Upper
99	100		
42	17.0	13.6	20.4
71	30.5	24.4	36.6

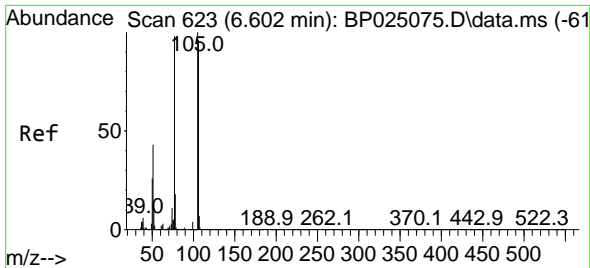


#8
 2-Chlorophenol
 Concen: 39.775 ng
 RT: 7.019 min Scan# 694
 Delta R.T. 0.000 min
 Lab File: BP025075.D
 Acq: 03 Jul 2025 12:25

Tgt Ion: 128 Resp: 981576

Ion	Ratio	Lower	Upper
128	100		
130	32.9	12.9	52.9
64	40.3	20.3	60.3



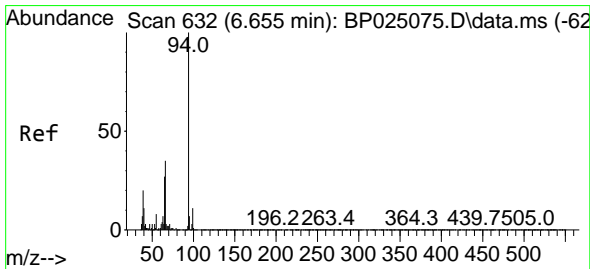
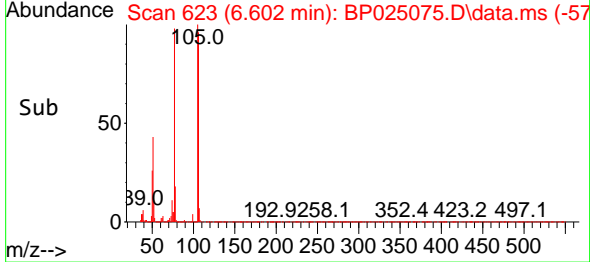
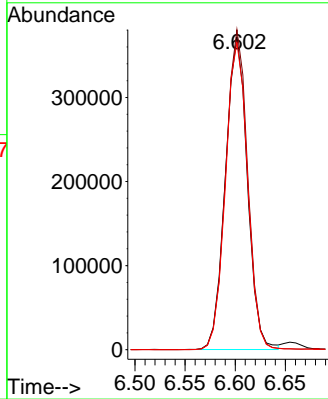
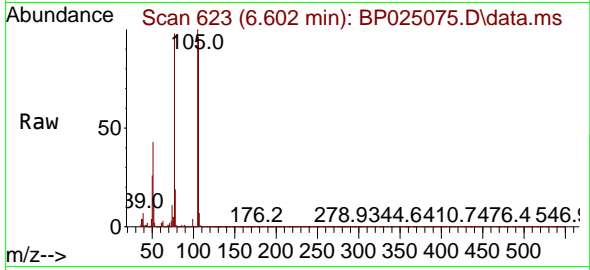


#9
 Benzaldehyde
 Concen: 37.634 ng
 RT: 6.602 min Scan# 61
 Delta R.T. -0.000 min
 Lab File: BP025075.D
 Acq: 03 Jul 2025 12:25

Instrument :
 BNA_P
 ClientSampleId :
 SSTDICCC040

Tgt Ion: 77 Resp: 565720

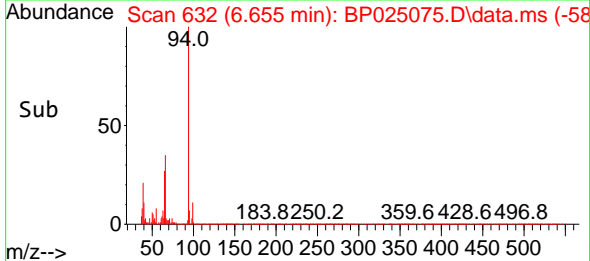
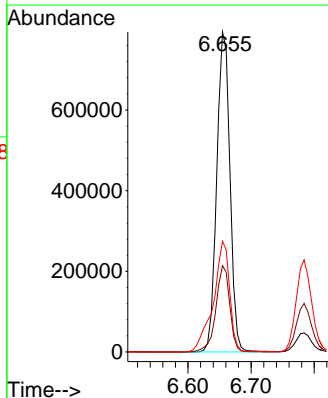
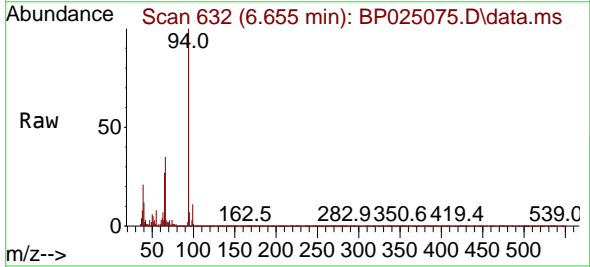
Ion	Ratio	Lower	Upper
77	100		
105	102.4	82.4	122.4
106	98.3	78.3	118.3

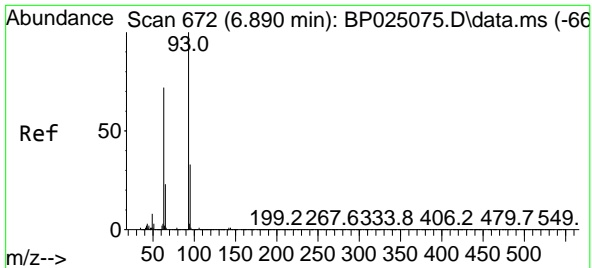


#10
 Phenol
 Concen: 39.348 ng
 RT: 6.655 min Scan# 632
 Delta R.T. 0.000 min
 Lab File: BP025075.D
 Acq: 03 Jul 2025 12:25

Tgt Ion: 94 Resp: 1150792

Ion	Ratio	Lower	Upper
94	100		
65	26.9	6.9	46.9
66	34.6	14.6	54.6



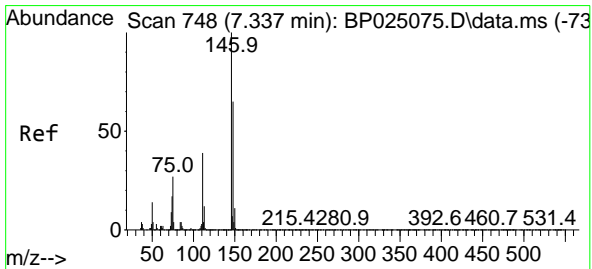
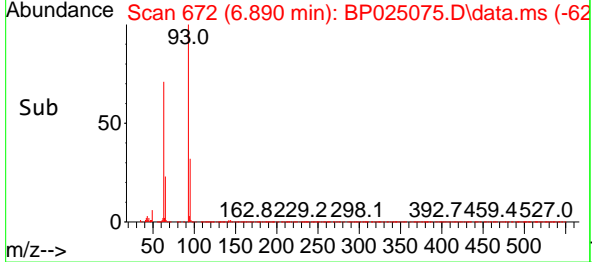
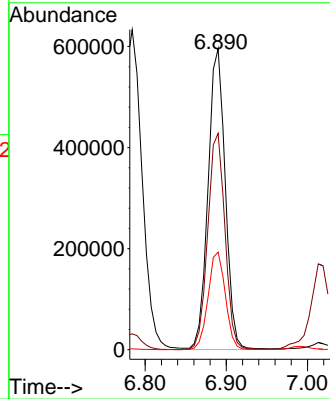
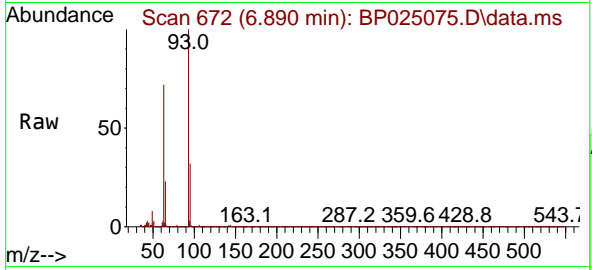


#11
 bis(2-Chloroethyl)ether
 Concen: 38.958 ng
 RT: 6.890 min Scan# 61
 Delta R.T. 0.000 min
 Lab File: BP025075.D
 Acq: 03 Jul 2025 12:25

Instrument :
 BNA_P
 ClientSampleId :
 SSTDICCC040

Tgt Ion: 93 Resp: 876880

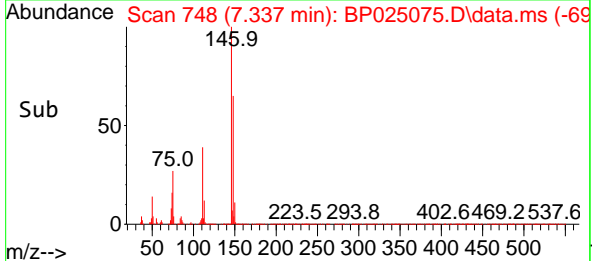
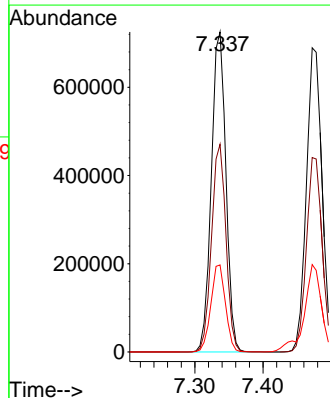
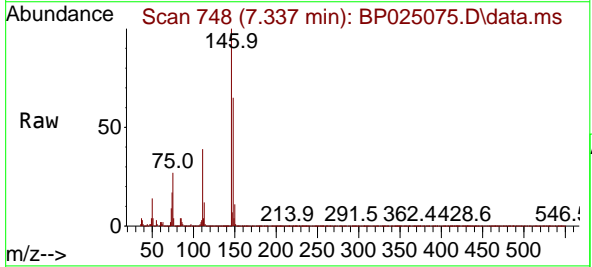
Ion	Ratio	Lower	Upper
93	100		
63	71.9	51.9	91.9
95	32.4	12.4	52.4

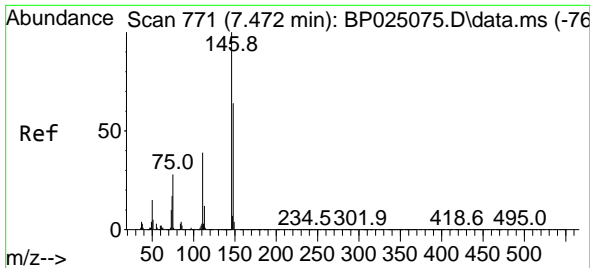


#12
 1,3-Dichlorobenzene
 Concen: 39.020 ng
 RT: 7.337 min Scan# 748
 Delta R.T. 0.000 min
 Lab File: BP025075.D
 Acq: 03 Jul 2025 12:25

Tgt Ion: 146 Resp: 1077716

Ion	Ratio	Lower	Upper
146	100		
148	64.9	51.9	77.9
75	27.2	21.8	32.6



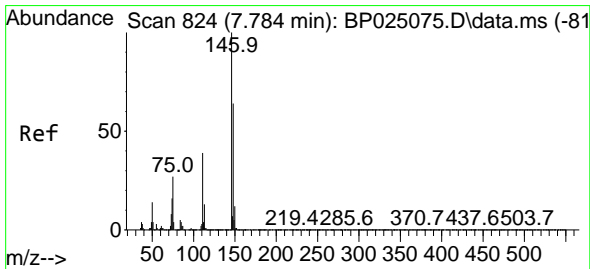
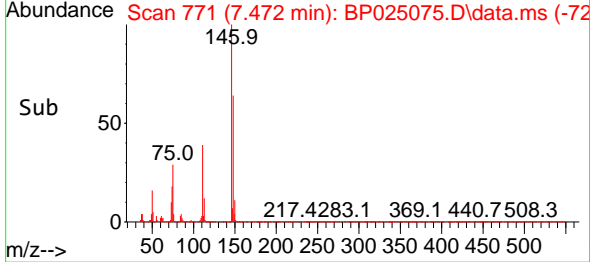
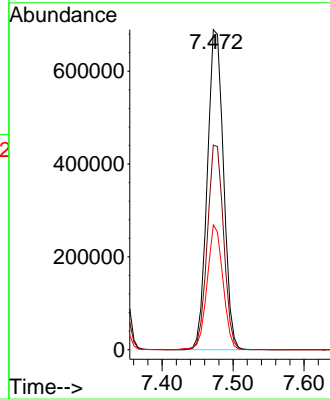
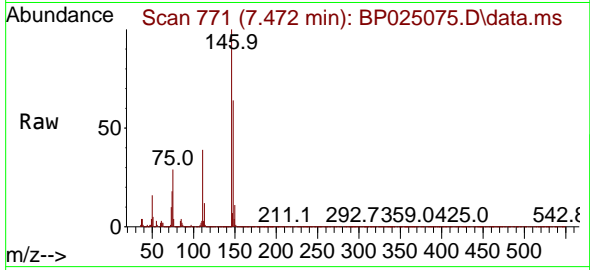


#13
 1,4-Dichlorobenzene
 Concen: 39.109 ng
 RT: 7.472 min Scan# 771
 Delta R.T. 0.000 min
 Lab File: BP025075.D
 Acq: 03 Jul 2025 12:25

Instrument :
 BNA_P
 ClientSampleId :
 SSTDICC040

Tgt Ion:146 Resp: 1093628

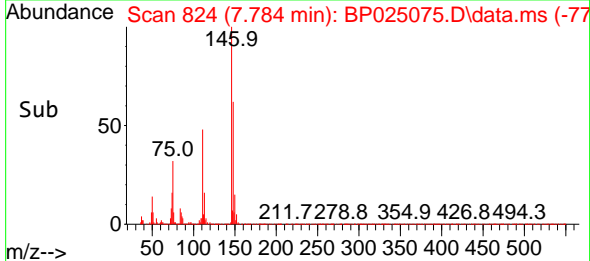
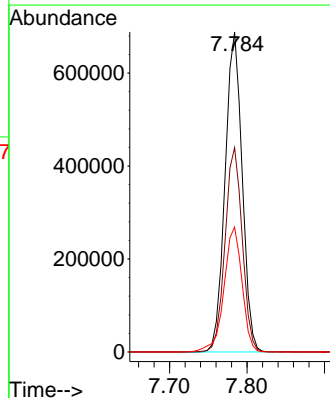
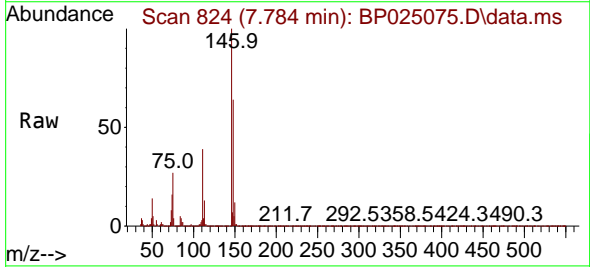
Ion	Ratio	Lower	Upper
146	100		
148	63.9	51.1	76.7
111	39.0	31.2	46.8

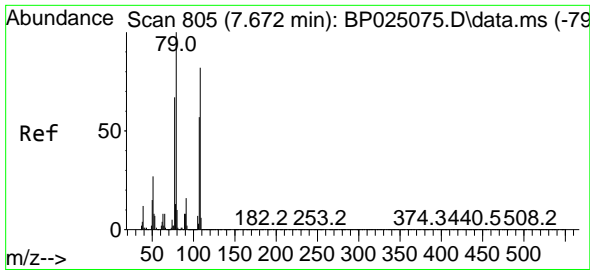


#14
 1,2-Dichlorobenzene
 Concen: 39.206 ng
 RT: 7.784 min Scan# 824
 Delta R.T. 0.000 min
 Lab File: BP025075.D
 Acq: 03 Jul 2025 12:25

Tgt Ion:146 Resp: 1054645

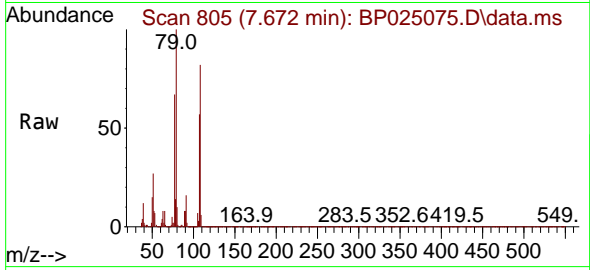
Ion	Ratio	Lower	Upper
146	100		
148	63.9	51.1	76.7
111	39.0	31.2	46.8



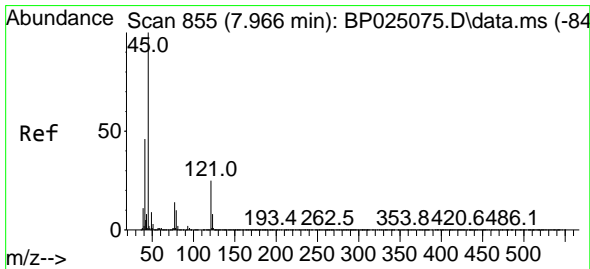
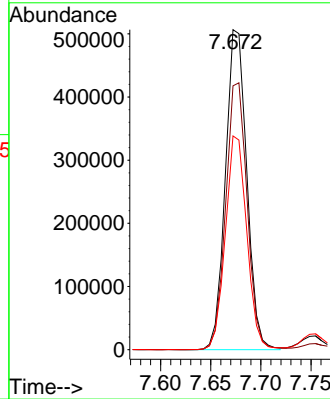
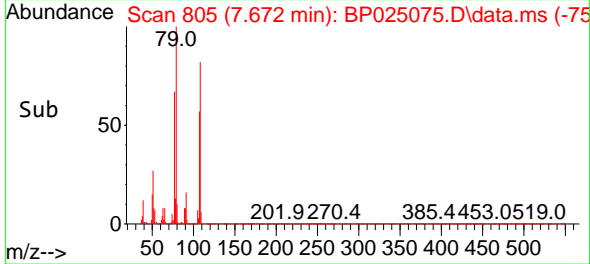


#15
 Benzyl Alcohol
 Concen: 38.947 ng
 RT: 7.672 min Scan# 805
 Delta R.T. 0.000 min
 Lab File: BP025075.D
 Acq: 03 Jul 2025 12:25

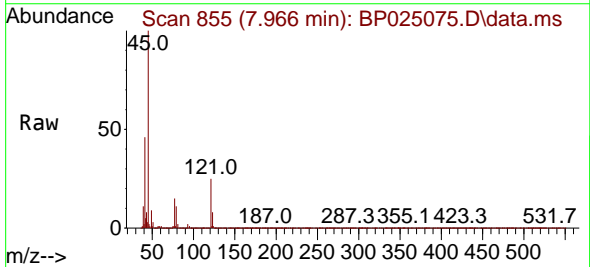
Instrument :
 BNA_P
 ClientSampleId :
 SSTDICCC040



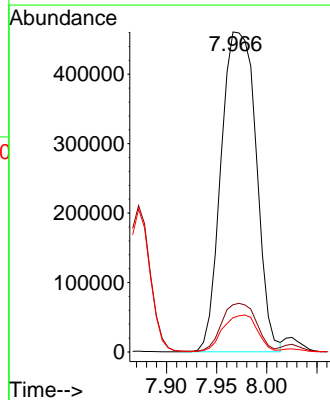
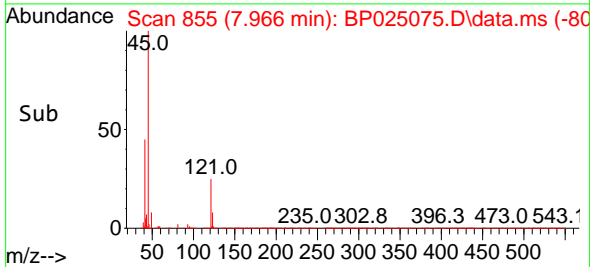
Tgt Ion: 79 Resp: 748226
 Ion Ratio Lower Upper
 79 100
 108 82.5 66.0 99.0
 77 66.8 53.4 80.2

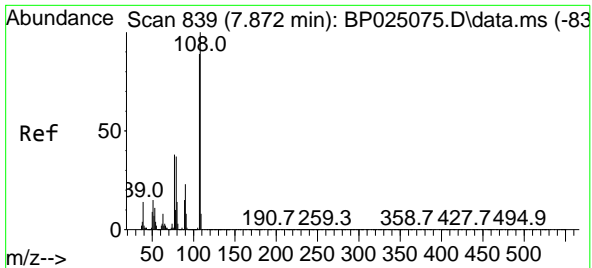


#16
 2,2'-oxybis(1-Chloropropane)
 Concen: 38.282 ng
 RT: 7.966 min Scan# 855
 Delta R.T. 0.000 min
 Lab File: BP025075.D
 Acq: 03 Jul 2025 12:25



Tgt Ion: 45 Resp: 1120385
 Ion Ratio Lower Upper
 45 100
 77 14.8 0.0 34.8
 79 10.7 0.0 30.7





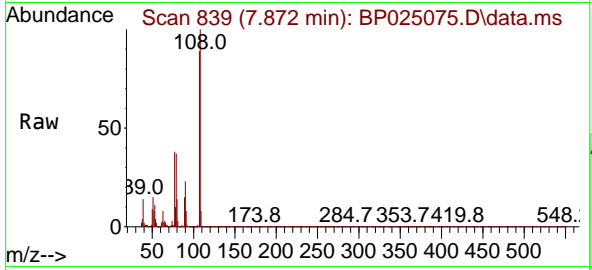
#17
 2-Methylphenol
 Concen: 40.195 ng
 RT: 7.872 min Scan# 811
 Delta R.T. 0.000 min
 Lab File: BP025075.D
 Acq: 03 Jul 2025 12:25

Instrument :

BNA_P

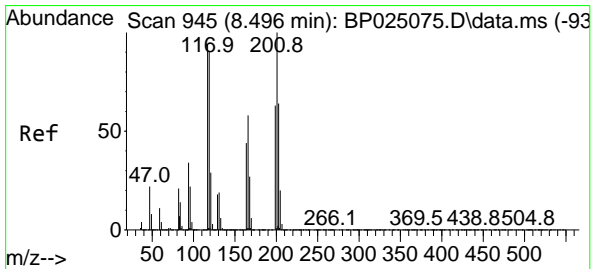
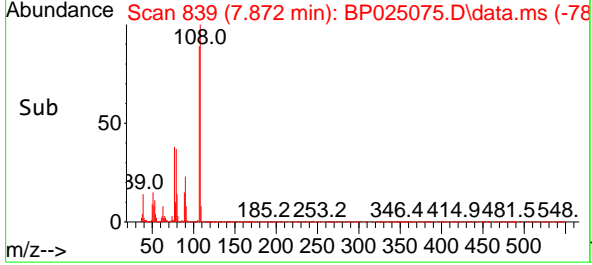
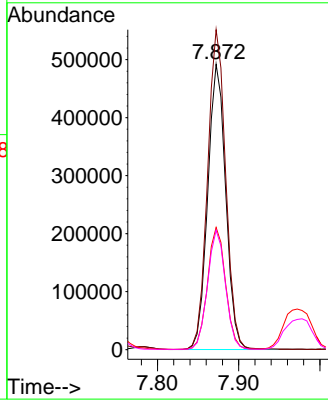
ClientSampleId :

SSTDICCC040

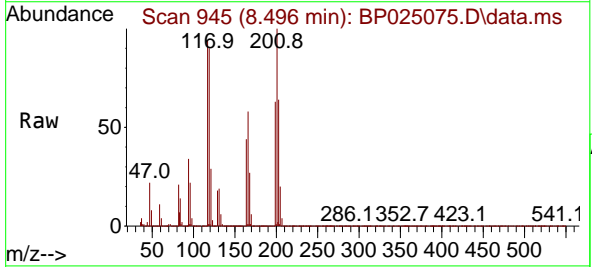


Tgt Ion:107 Resp: 757253

Ion	Ratio	Lower	Upper
107	100		
108	112.1	89.7	134.5
77	42.8	34.2	51.4
79	41.8	33.4	50.2

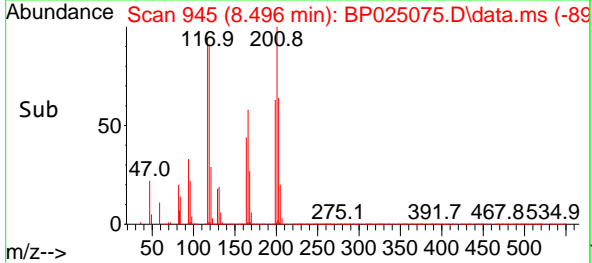
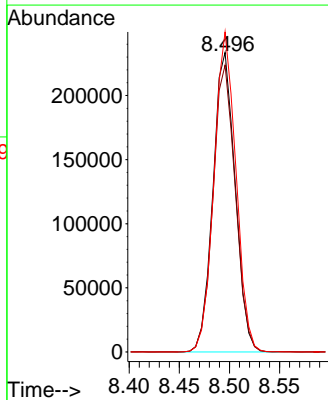


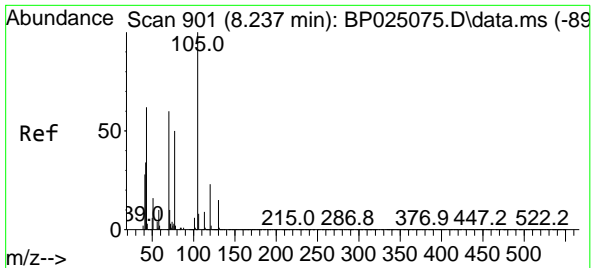
#18
 Hexachloroethane
 Concen: 39.510 ng
 RT: 8.496 min Scan# 945
 Delta R.T. 0.000 min
 Lab File: BP025075.D
 Acq: 03 Jul 2025 12:25



Tgt Ion:117 Resp: 359924

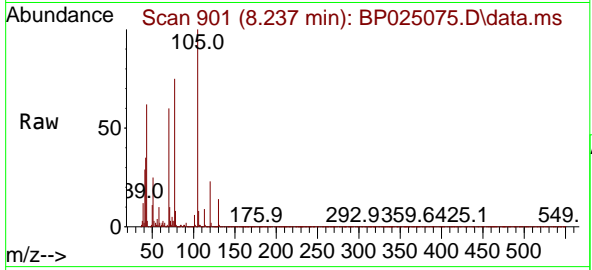
Ion	Ratio	Lower	Upper
117	100		
119	95.8	76.6	115.0
201	106.8	85.4	128.2





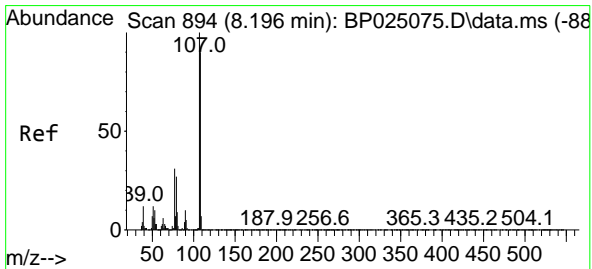
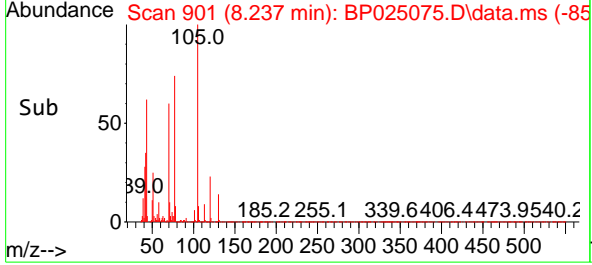
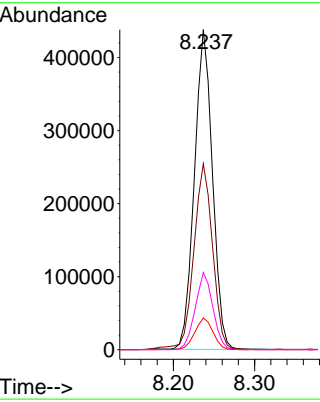
#19
 n-Nitroso-di-n-propylamine
 Concen: 39.605 ng
 RT: 8.237 min Scan# 901
 Delta R.T. 0.000 min
 Lab File: BP025075.D
 Acq: 03 Jul 2025 12:25

Instrument : BNA_P
 ClientSampleId : SSTDICCC040

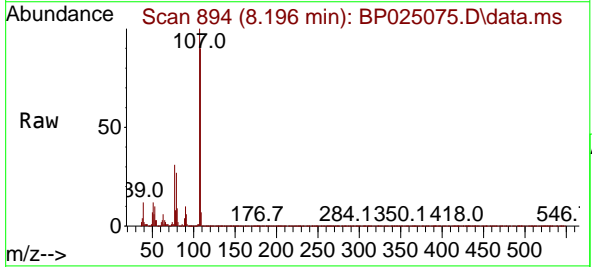


Tgt Ion: 70 Resp: 676070

Ion	Ratio	Lower	Upper
70	100		
42	58.1	46.5	69.7
101	9.9	7.9	11.9
130	24.1	19.3	28.9

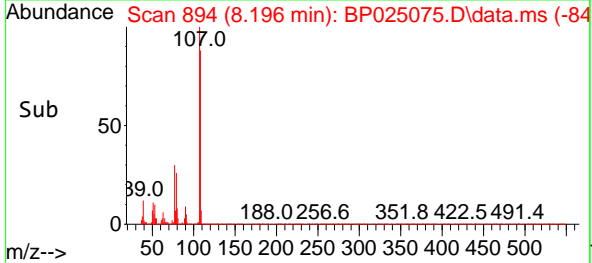
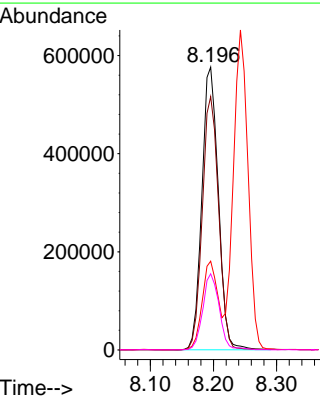


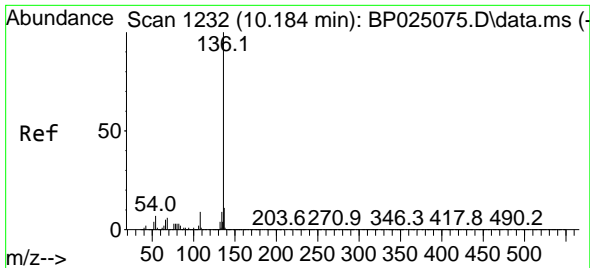
#20
 3+4-Methylphenols
 Concen: 39.511 ng
 RT: 8.196 min Scan# 894
 Delta R.T. 0.000 min
 Lab File: BP025075.D
 Acq: 03 Jul 2025 12:25



Tgt Ion: 107 Resp: 1042619

Ion	Ratio	Lower	Upper
107	100		
108	89.5	69.5	109.5
77	31.4	11.4	51.4
79	26.9	6.9	46.9



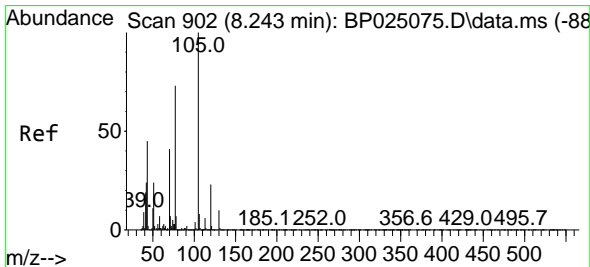
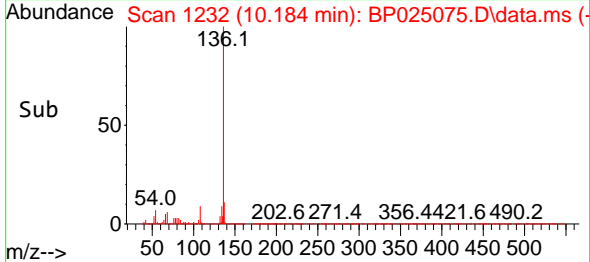
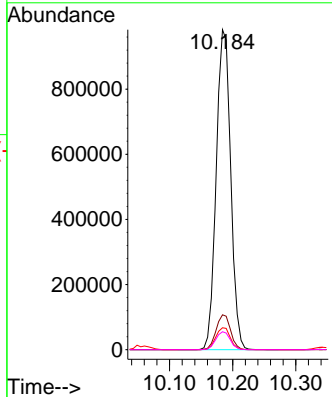
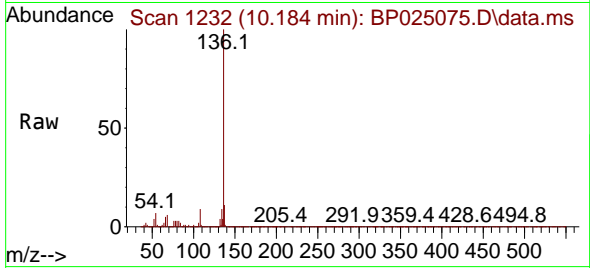


#21
 Naphthalene-d8
 Concen: 20.000 ng
 RT: 10.184 min Scan# 111
 Delta R.T. 0.000 min
 Lab File: BP025075.D
 Acq: 03 Jul 2025 12:25

Instrument :
 BNA_P
 ClientSampleId :
 SSTDICCC040

Tgt Ion:136 Resp: 1560152

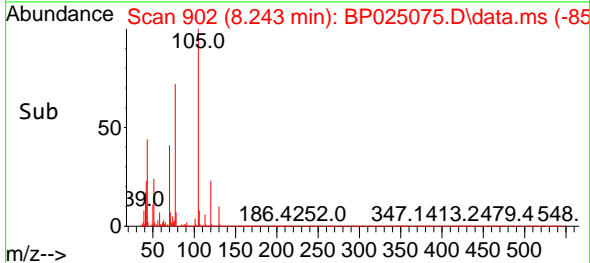
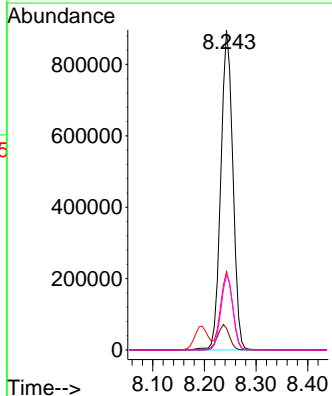
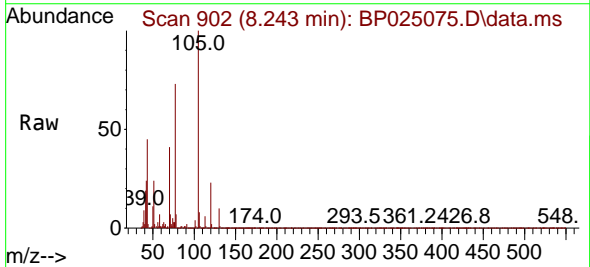
Ion	Ratio	Lower	Upper
136	100		
137	10.9	8.7	13.1
54	6.8	5.4	8.2
68	5.6	4.5	6.7

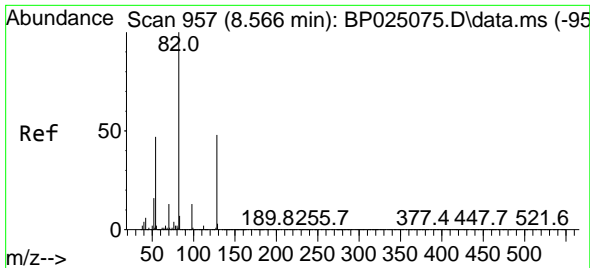


#22
 Acetophenone
 Concen: 39.332 ng
 RT: 8.243 min Scan# 902
 Delta R.T. 0.000 min
 Lab File: BP025075.D
 Acq: 03 Jul 2025 12:25

Tgt Ion:105 Resp: 1451215

Ion	Ratio	Lower	Upper
105	100		
71	6.8	5.4	8.2
51	24.5	19.6	29.4
120	23.5	18.8	28.2



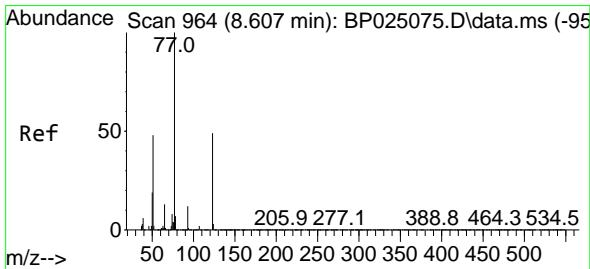
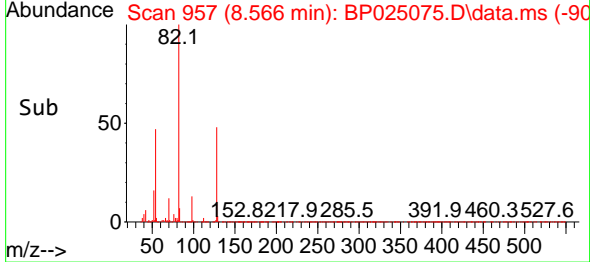
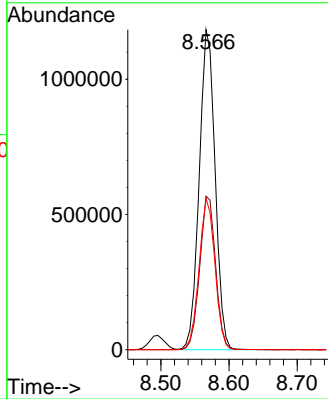
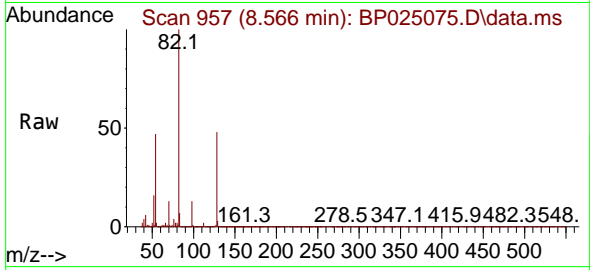


#23
 Nitrobenzene-d5
 Concen: 81.616 ng
 RT: 8.566 min Scan# 911
 Delta R.T. 0.000 min
 Lab File: BP025075.D
 Acq: 03 Jul 2025 12:25

Instrument :
 BNA_P
 ClientSampleId :
 SSTDICC040

Tgt Ion: 82 Resp: 1914639

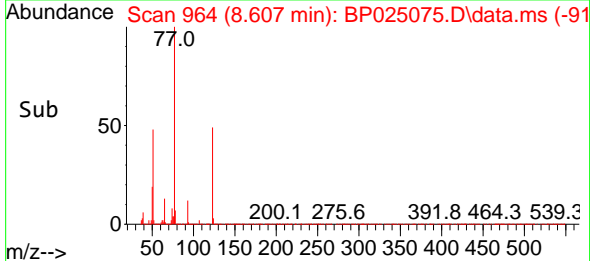
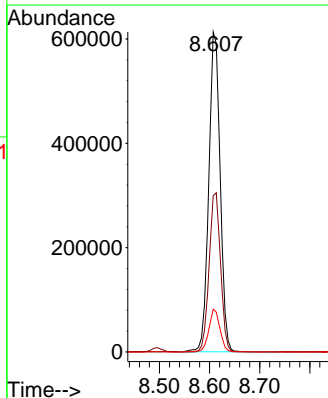
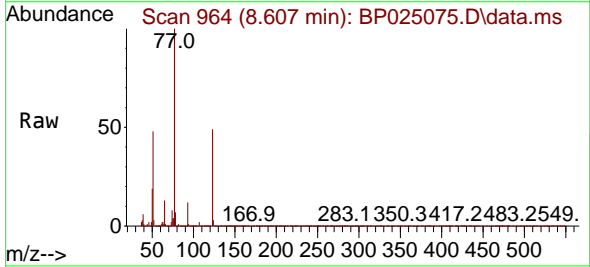
Ion	Ratio	Lower	Upper
82	100		
128	48.0	38.4	57.6
54	47.2	37.8	56.6

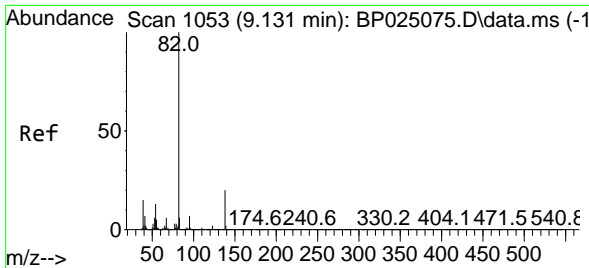


#24
 Nitrobenzene
 Concen: 40.457 ng
 RT: 8.607 min Scan# 964
 Delta R.T. 0.000 min
 Lab File: BP025075.D
 Acq: 03 Jul 2025 12:25

Tgt Ion: 77 Resp: 966724

Ion	Ratio	Lower	Upper
77	100		
123	48.8	39.0	58.6
65	13.4	10.7	16.1



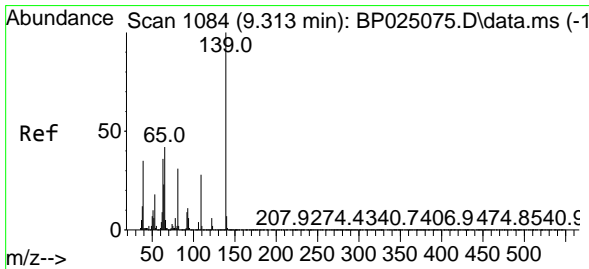
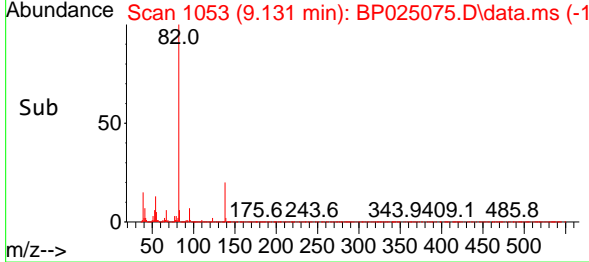
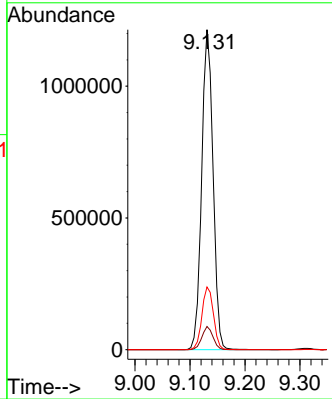
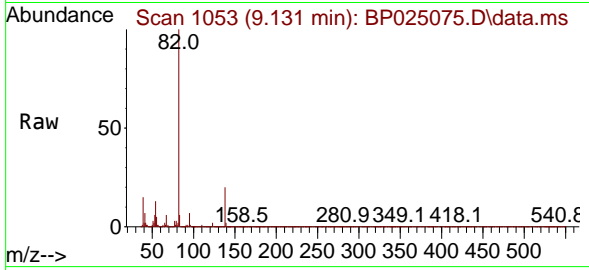


#25
 Isophorone
 Concen: 39.740 ng
 RT: 9.131 min Scan# 1053
 Delta R.T. 0.000 min
 Lab File: BP025075.D
 Acq: 03 Jul 2025 12:25

Instrument : BNA_P
 Client Sample Id : SSTDICCC040

Tgt Ion: 82 Resp: 1742244

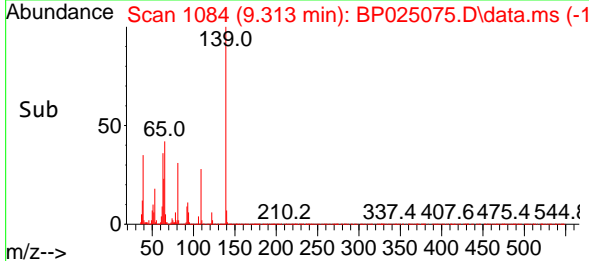
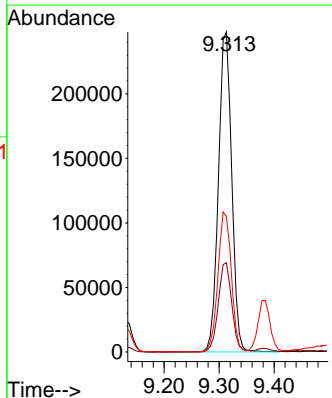
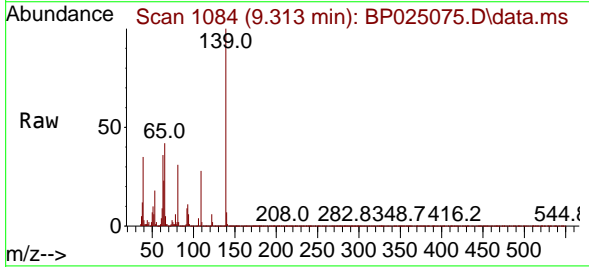
Ion	Ratio	Lower	Upper
82	100		
95	7.2	5.8	8.6
138	19.6	15.7	23.5

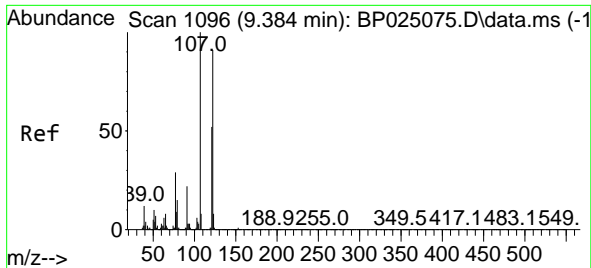


#26
 2-Nitrophenol
 Concen: 36.734 ng
 RT: 9.313 min Scan# 1084
 Delta R.T. 0.000 min
 Lab File: BP025075.D
 Acq: 03 Jul 2025 12:25

Tgt Ion: 139 Resp: 416304

Ion	Ratio	Lower	Upper
139	100		
109	27.9	22.3	33.5
65	42.3	33.8	50.8



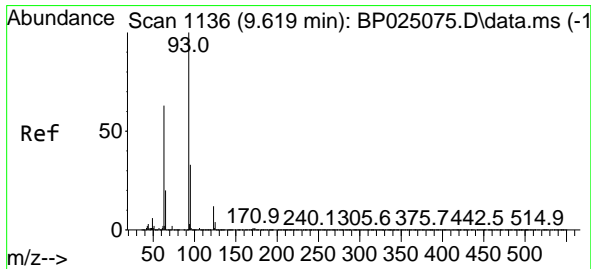
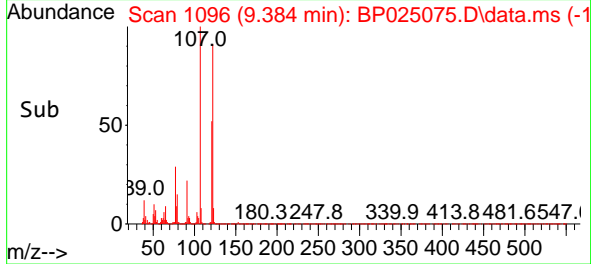
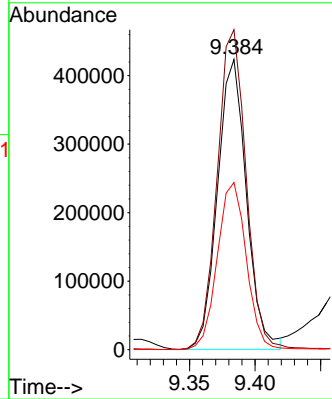
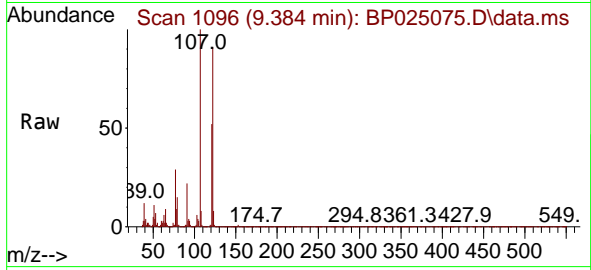


#27
 2,4-Dimethylphenol
 Concen: 39.698 ng
 RT: 9.384 min Scan# 1096
 Delta R.T. 0.000 min
 Lab File: BP025075.D
 Acq: 03 Jul 2025 12:25

Instrument : BNA_P
 ClientSampleId : SSTDICCC040

Tgt Ion:122 Resp: 649221

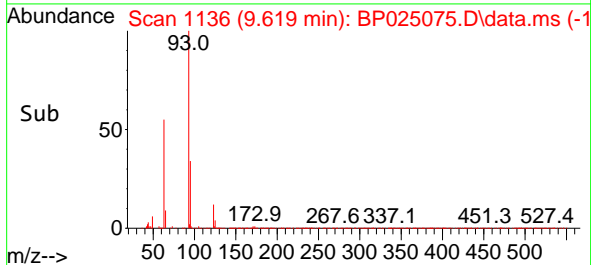
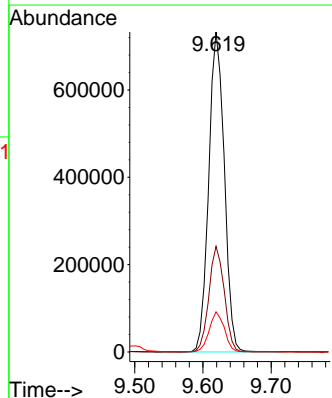
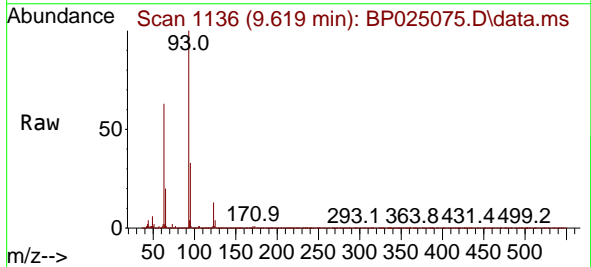
Ion	Ratio	Lower	Upper
122	100		
107	110.2	88.2	132.2
121	57.6	46.1	69.1

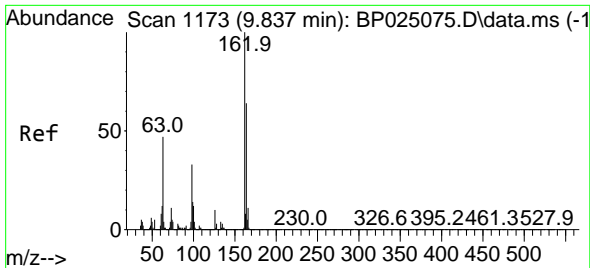


#28
 bis(2-Chloroethoxy)methane
 Concen: 39.172 ng
 RT: 9.619 min Scan# 1136
 Delta R.T. 0.000 min
 Lab File: BP025075.D
 Acq: 03 Jul 2025 12:25

Tgt Ion: 93 Resp: 1166063

Ion	Ratio	Lower	Upper
93	100		
95	33.0	26.4	39.6
123	12.6	10.1	15.1

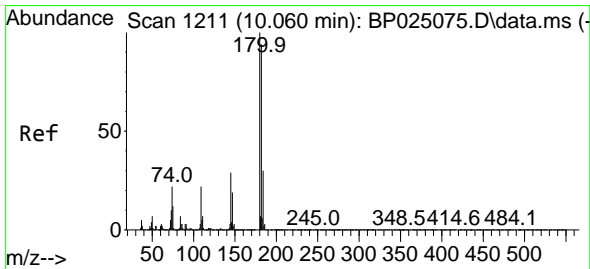
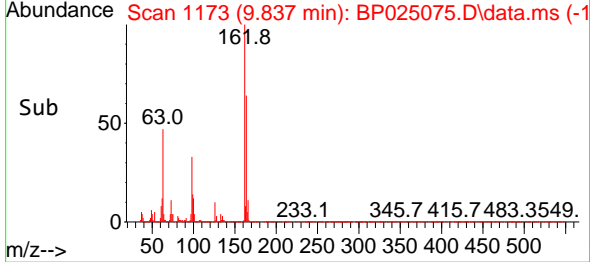
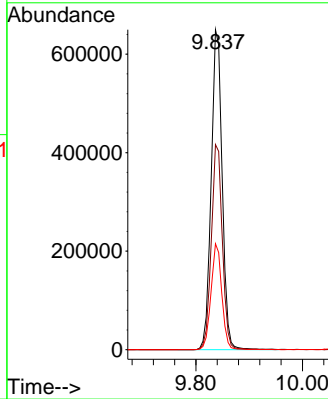
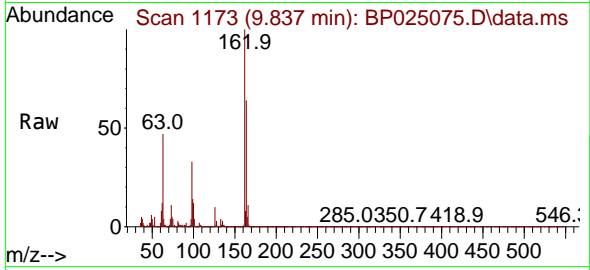




#29
 2,4-Dichlorophenol
 Concen: 41.124 ng
 RT: 9.837 min Scan# 1173
 Delta R.T. 0.000 min
 Lab File: BP025075.D
 Acq: 03 Jul 2025 12:25

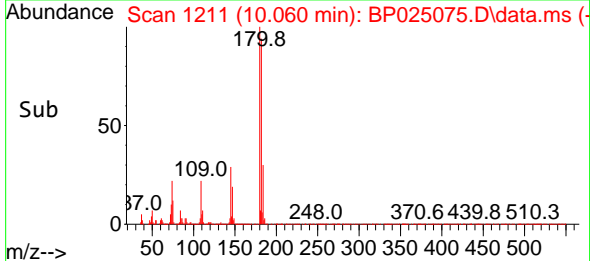
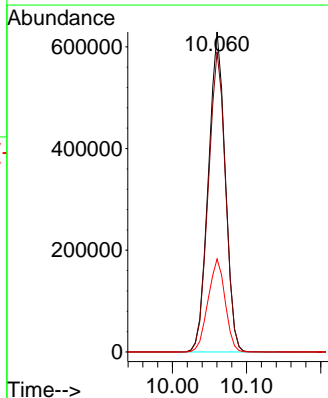
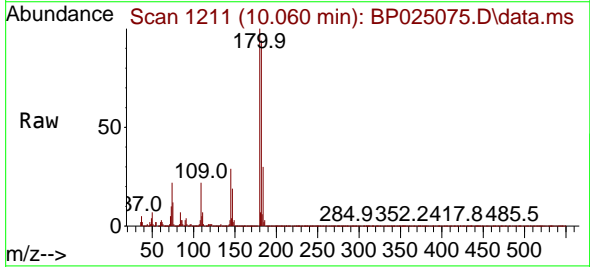
Instrument :
 BNA_P
 ClientSampleId :
 SSTDICC040

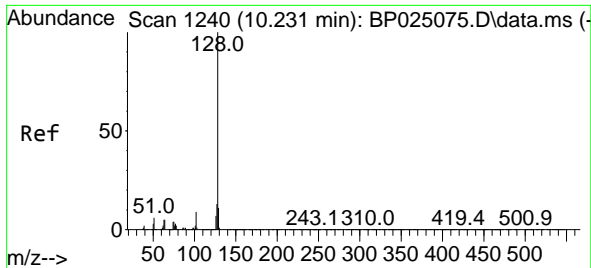
Tgt Ion	Resp	Lower	Upper
162	100		
164	64.1	44.1	84.1
98	33.1	13.1	53.1



#30
 1,2,4-Trichlorobenzene
 Concen: 39.625 ng
 RT: 10.060 min Scan# 1211
 Delta R.T. 0.000 min
 Lab File: BP025075.D
 Acq: 03 Jul 2025 12:25

Tgt Ion	Resp	Lower	Upper
180	100		
182	93.9	75.1	112.7
145	29.1	23.3	34.9



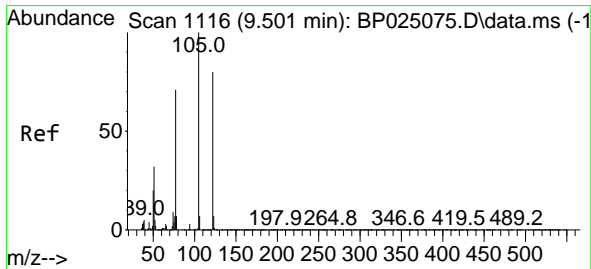
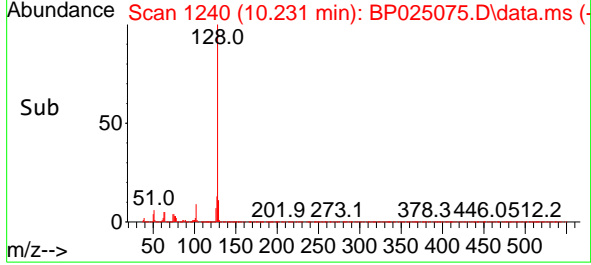
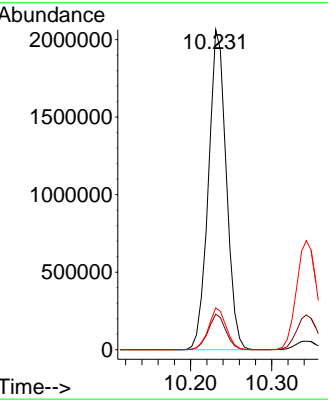
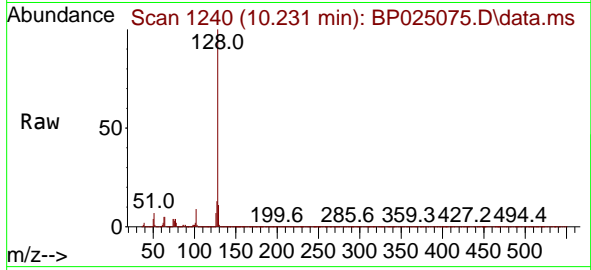


#31
 Naphthalene
 Concen: 39.276 ng
 RT: 10.231 min Scan# 1116
 Delta R.T. 0.000 min
 Lab File: BP025075.D
 Acq: 03 Jul 2025 12:25

Instrument : BNA_P
 ClientSampleId : SSTDICCC040

Tgt Ion:128 Resp: 3155257

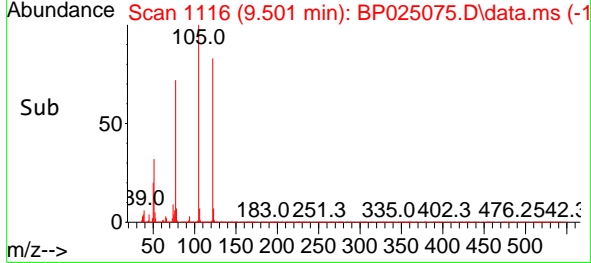
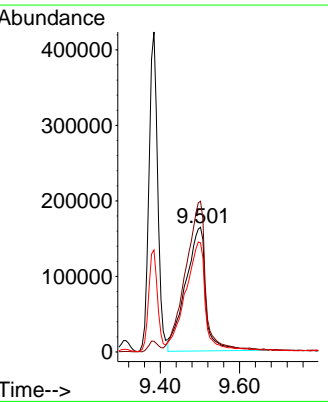
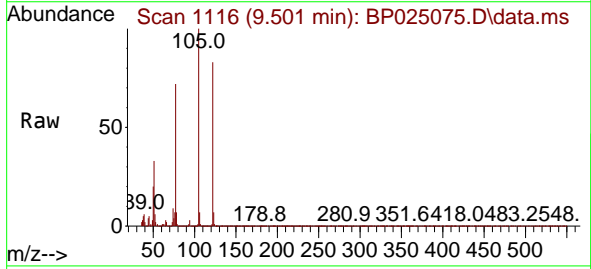
Ion	Ratio	Lower	Upper
128	100		
129	11.1	8.9	13.3
127	13.0	10.4	15.6

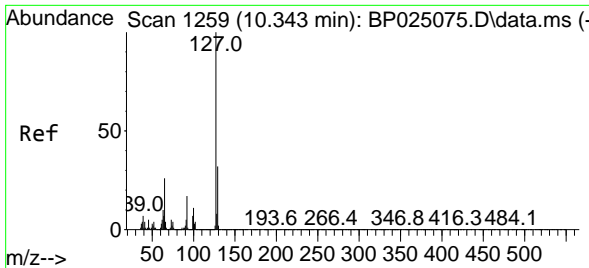


#32
 Benzoic acid
 Concen: 38.533 ng
 RT: 9.501 min Scan# 1116
 Delta R.T. 0.000 min
 Lab File: BP025075.D
 Acq: 03 Jul 2025 12:25

Tgt Ion:122 Resp: 581334

Ion	Ratio	Lower	Upper
122	100		
105	121.0	101.0	141.0
77	87.6	67.6	107.6





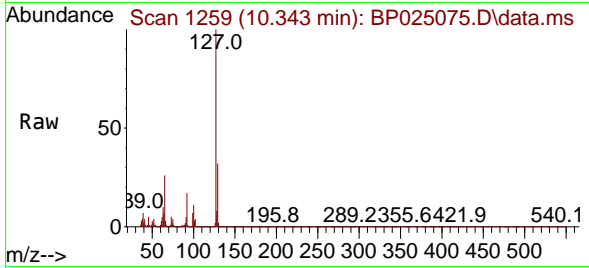
#33
 4-Chloroaniline
 Concen: 40.595 ng
 RT: 10.343 min Scan# 11
 Delta R.T. 0.000 min
 Lab File: BP025075.D
 Acq: 03 Jul 2025 12:25

Instrument :

BNA_P

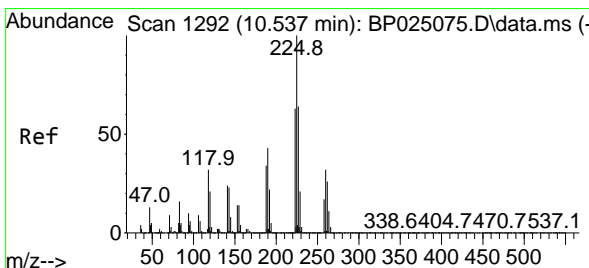
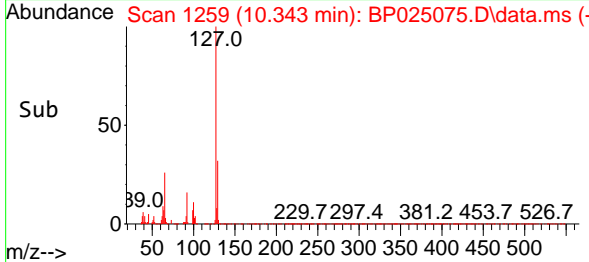
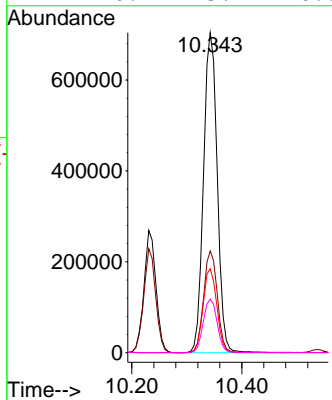
ClientSampleId :

SSTDICCC040



Tgt Ion:127 Resp: 1217057

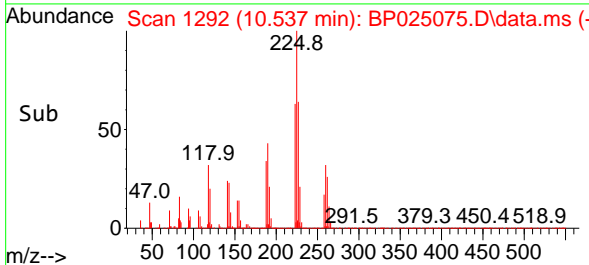
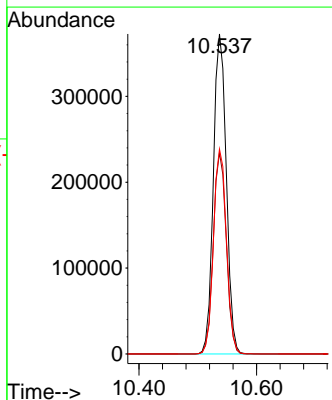
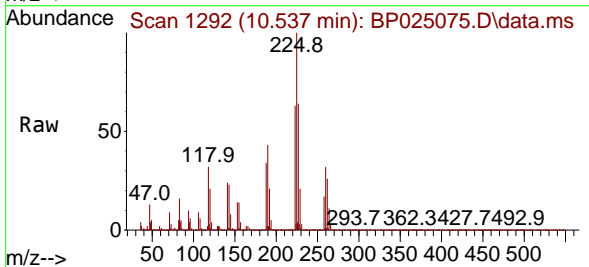
Ion	Ratio	Lower	Upper
127	100		
129	31.8	25.4	38.2
65	26.3	21.0	31.6
92	16.7	13.4	20.0

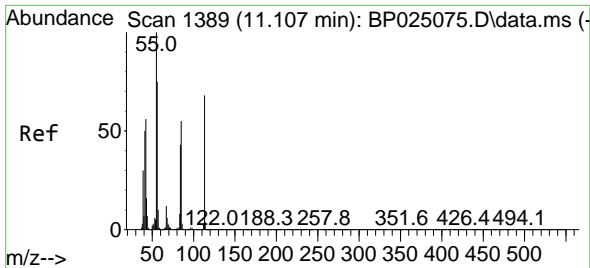


#34
 Hexachlorobutadiene
 Concen: 39.409 ng
 RT: 10.537 min Scan# 1292
 Delta R.T. 0.000 min
 Lab File: BP025075.D
 Acq: 03 Jul 2025 12:25

Tgt Ion:225 Resp: 567921

Ion	Ratio	Lower	Upper
225	100		
223	62.9	50.3	75.5
227	64.1	51.3	76.9

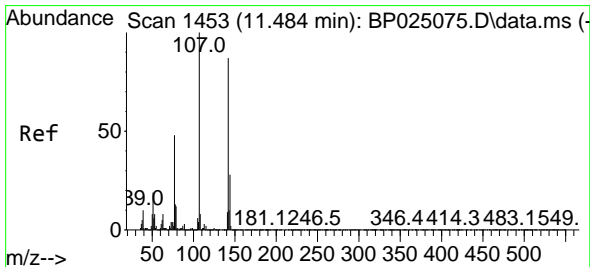
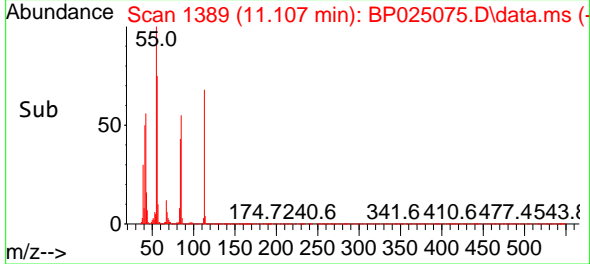
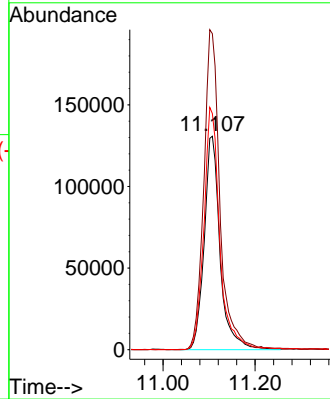
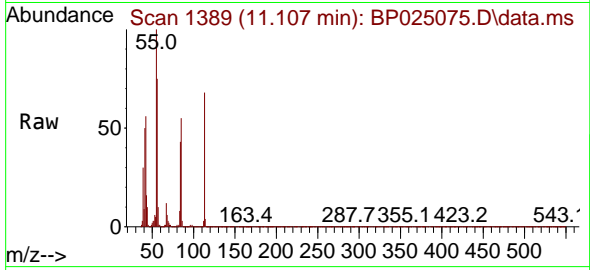




#35
 Caprolactam
 Concen: 40.469 ng
 RT: 11.107 min Scan# 11
 Delta R.T. 0.000 min
 Lab File: BP025075.D
 Acq: 03 Jul 2025 12:25

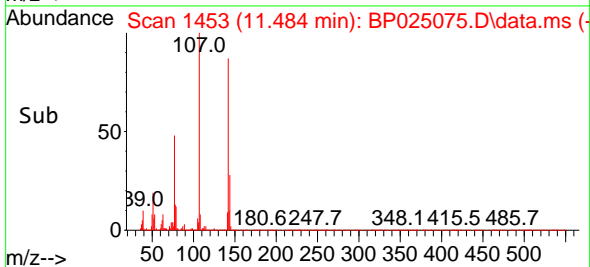
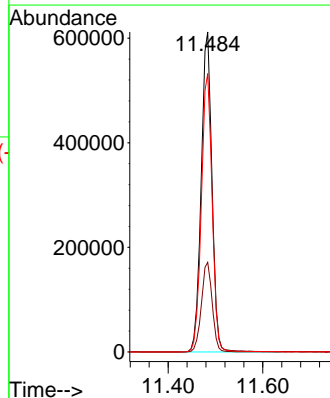
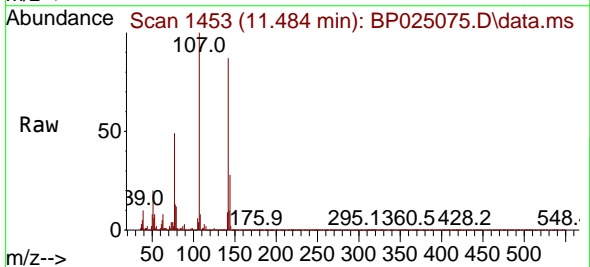
Instrument :
 BNA_P
 ClientSampleId :
 SSTDICC040

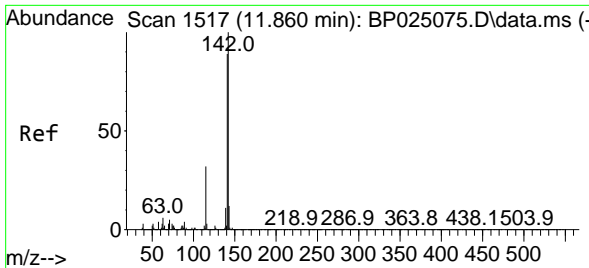
Tgt Ion:113 Resp: 313947
 Ion Ratio Lower Upper
 113 100
 55 148.1 128.1 168.1
 56 110.7 90.7 130.7



#36
 4-Chloro-3-methylphenol
 Concen: 40.733 ng
 RT: 11.484 min Scan# 1453
 Delta R.T. 0.000 min
 Lab File: BP025075.D
 Acq: 03 Jul 2025 12:25

Tgt Ion:107 Resp: 965263
 Ion Ratio Lower Upper
 107 100
 144 28.0 22.4 33.6
 142 87.0 69.6 104.4



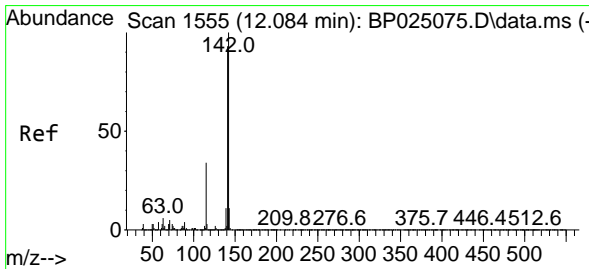
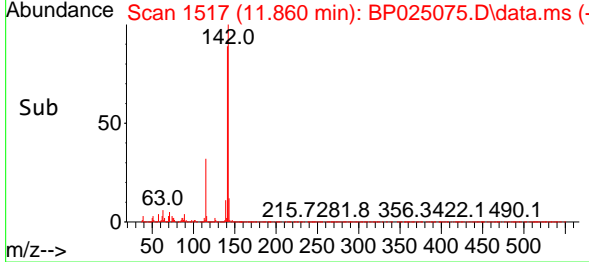
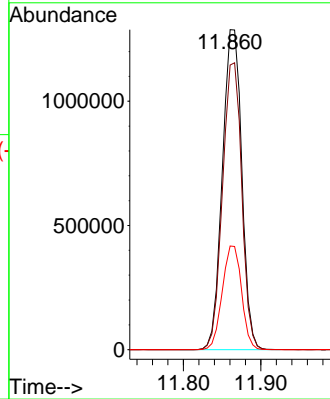
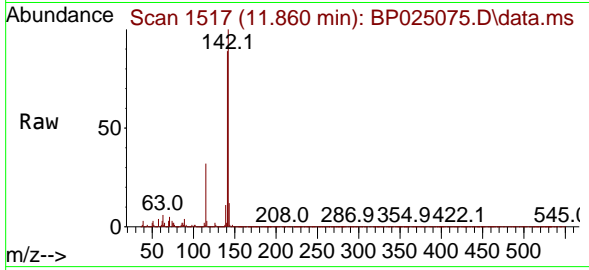


#37
 2-Methylnaphthalene
 Concen: 39.530 ng
 RT: 11.860 min Scan# 1517
 Delta R.T. 0.000 min
 Lab File: BP025075.D
 Acq: 03 Jul 2025 12:25

Instrument :
 BNA_P
 ClientSampleId :
 SSTDICC040

Tgt Ion:142 Resp: 2240648

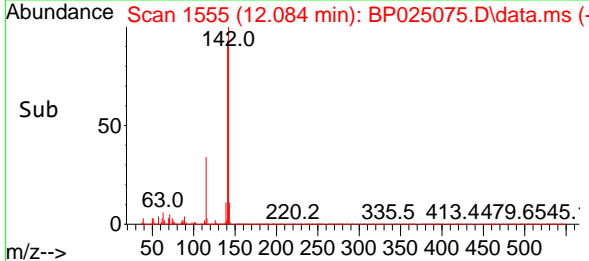
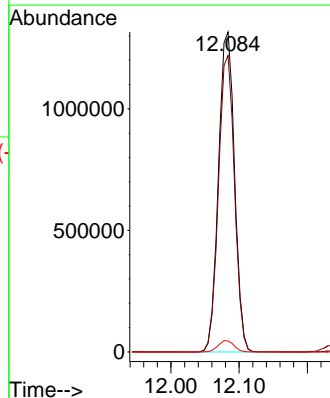
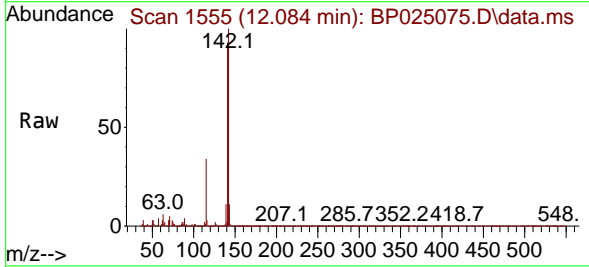
Ion	Ratio	Lower	Upper
142	100		
141	89.0	71.2	106.8
115	32.4	25.9	38.9

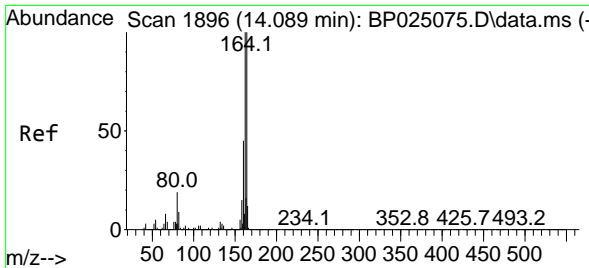


#38
 1-Methylnaphthalene
 Concen: 39.054 ng
 RT: 12.084 min Scan# 1555
 Delta R.T. 0.000 min
 Lab File: BP025075.D
 Acq: 03 Jul 2025 12:25

Tgt Ion:142 Resp: 2158945

Ion	Ratio	Lower	Upper
142	100		
141	92.6	74.1	111.1
116	3.4	2.7	4.1



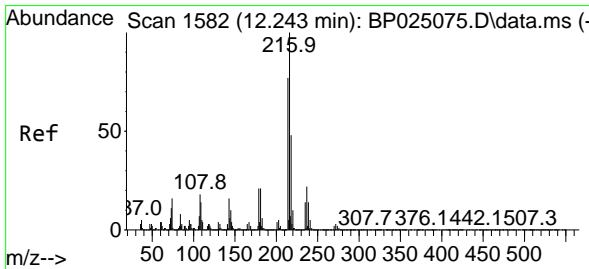
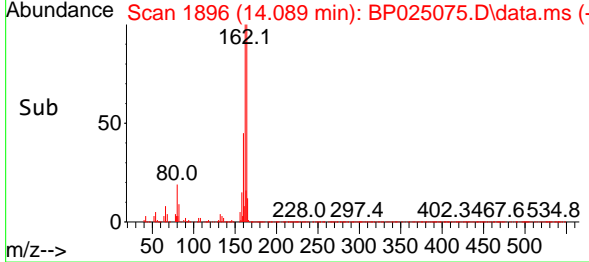
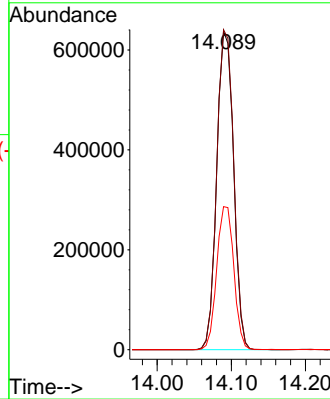
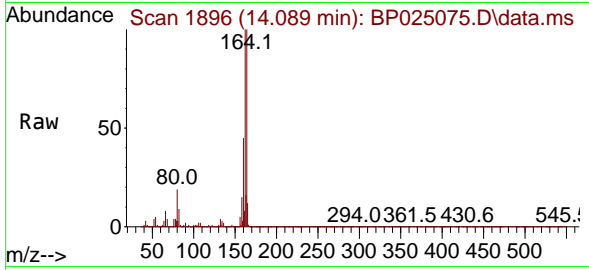


#39
 Acenaphthene-d10
 Concen: 20.000 ng
 RT: 14.089 min Scan# 1896
 Delta R.T. 0.000 min
 Lab File: BP025075.D
 Acq: 03 Jul 2025 12:25

Instrument : BNA_P
 Client Sample Id : SSTDICCC040

Tgt Ion:164 Resp: 1003103

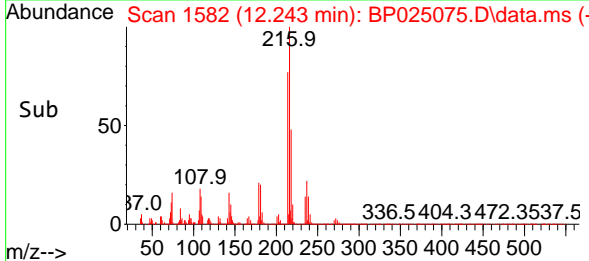
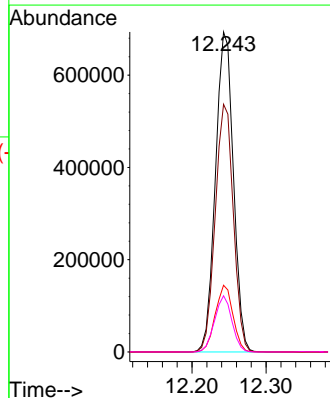
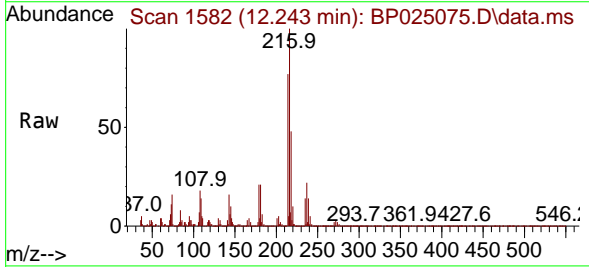
Ion	Ratio	Lower	Upper
164	100		
162	100.4	80.3	120.5
160	44.9	35.9	53.9

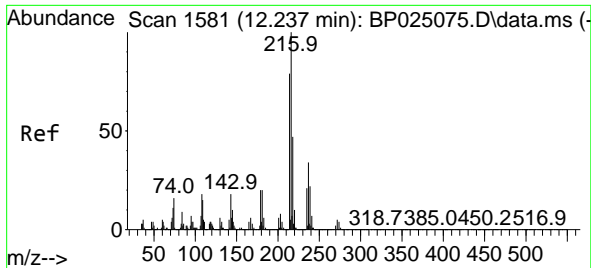


#40
 1,2,4,5-Tetrachlorobenzene
 Concen: 40.396 ng
 RT: 12.243 min Scan# 1582
 Delta R.T. 0.000 min
 Lab File: BP025075.D
 Acq: 03 Jul 2025 12:25

Tgt Ion:216 Resp: 1164588

Ion	Ratio	Lower	Upper
216	100		
214	78.0	62.4	93.6
179	20.6	16.5	24.7
108	17.1	13.7	20.5

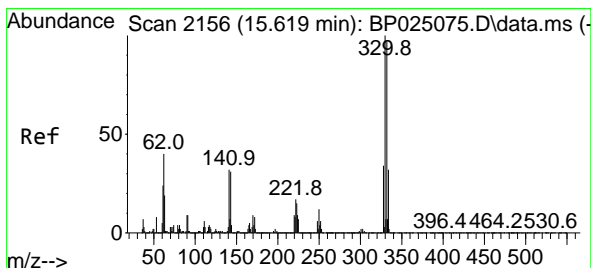
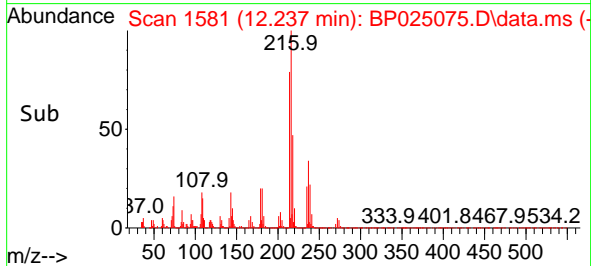
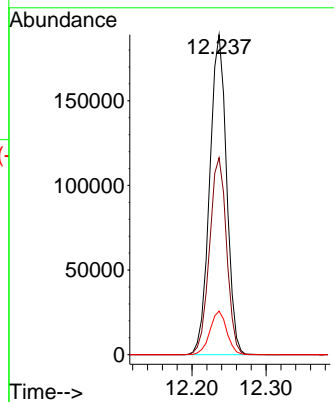
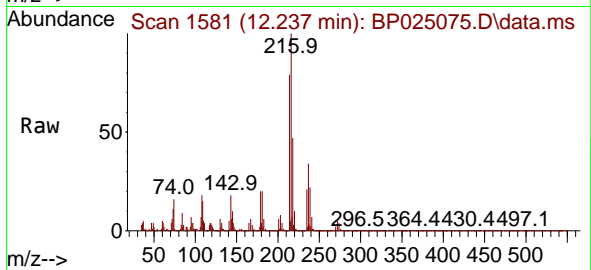




#41
 Hexachlorocyclopentadiene
 Concen: 39.695 ng
 RT: 12.237 min Scan# 111
 Delta R.T. 0.000 min
 Lab File: BP025075.D
 Acq: 03 Jul 2025 12:25

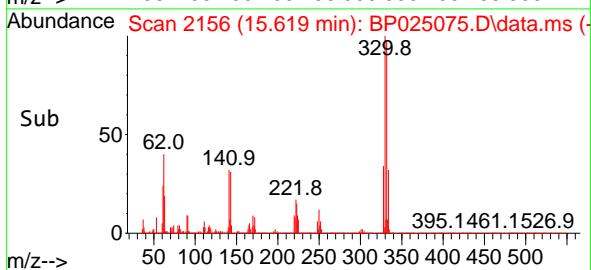
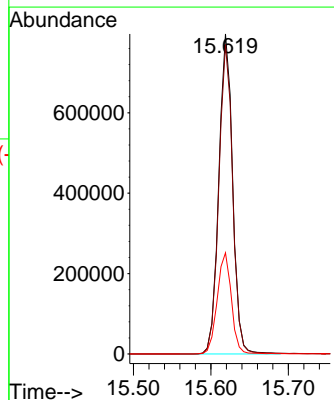
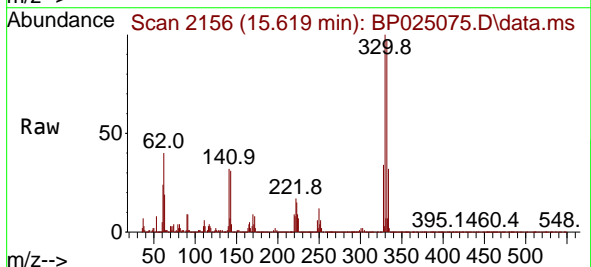
Instrument :
 BNA_P
 ClientSampleId :
 SSTDICCC040

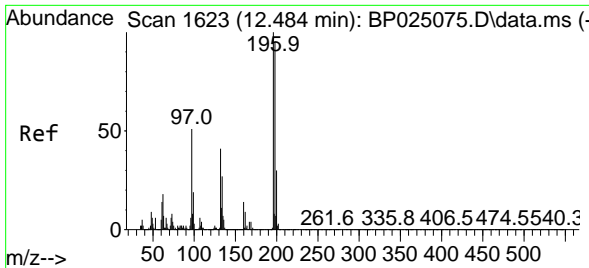
Tgt Ion	Resp	Lower	Upper
237	100		
235	61.6	41.6	81.6
272	13.6	0.0	33.6



#42
 2,4,6-Tribromophenol
 Concen: 83.301 ng
 RT: 15.619 min Scan# 2156
 Delta R.T. 0.000 min
 Lab File: BP025075.D
 Acq: 03 Jul 2025 12:25

Tgt Ion	Resp	Lower	Upper
330	100		
332	97.1	77.7	116.5
141	32.5	26.0	39.0





#43
 2,4,6-Trichlorophenol
 Concen: 42.497 ng
 RT: 12.484 min Scan# 1623
 Delta R.T. 0.000 min
 Lab File: BP025075.D
 Acq: 03 Jul 2025 12:25

Instrument :

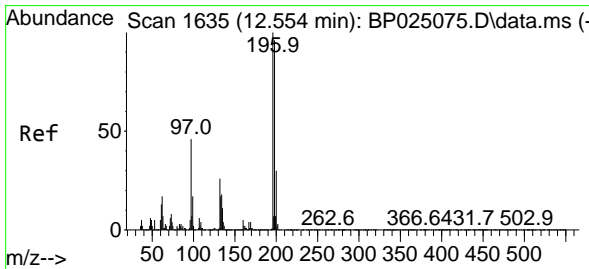
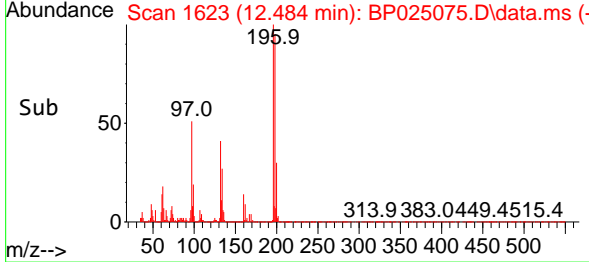
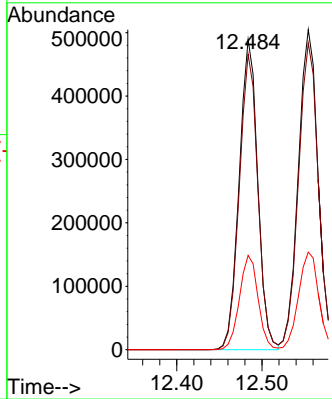
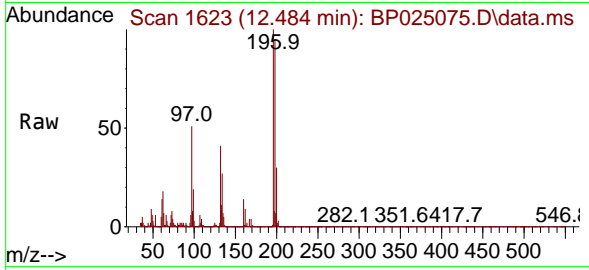
BNA_P

ClientSampleId :

SSTDICCC040

Tgt Ion:196 Resp: 741839

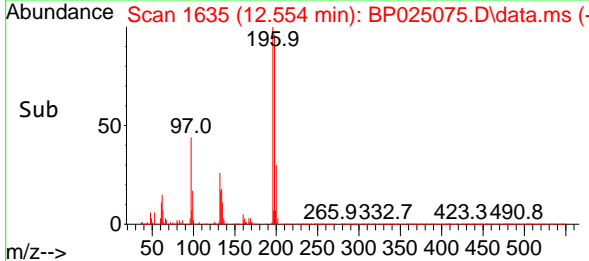
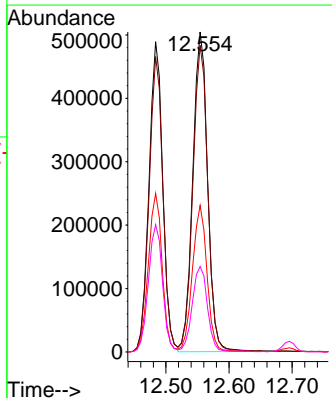
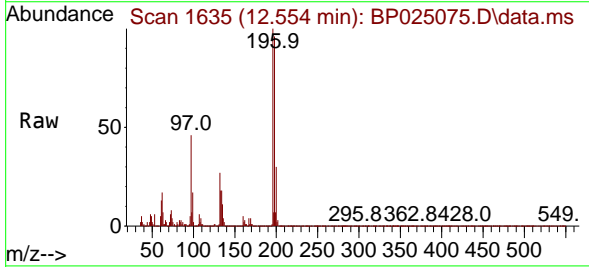
Ion	Ratio	Lower	Upper
196	100		
198	95.2	76.2	114.2
200	30.4	24.3	36.5

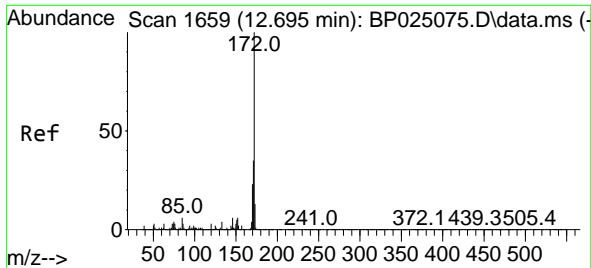


#44
 2,4,5-Trichlorophenol
 Concen: 41.668 ng
 RT: 12.554 min Scan# 1635
 Delta R.T. 0.000 min
 Lab File: BP025075.D
 Acq: 03 Jul 2025 12:25

Tgt Ion:196 Resp: 824324

Ion	Ratio	Lower	Upper
196	100		
198	95.8	76.6	115.0
97	45.8	36.6	55.0
132	26.7	21.4	32.0



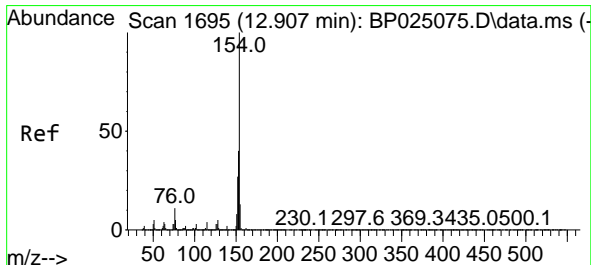
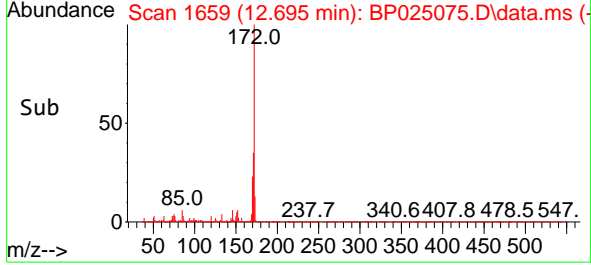
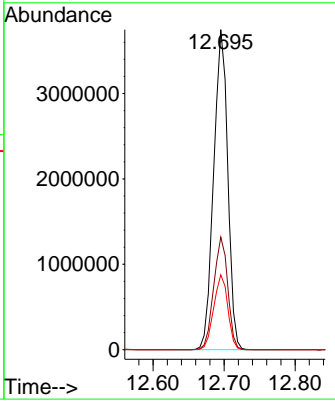
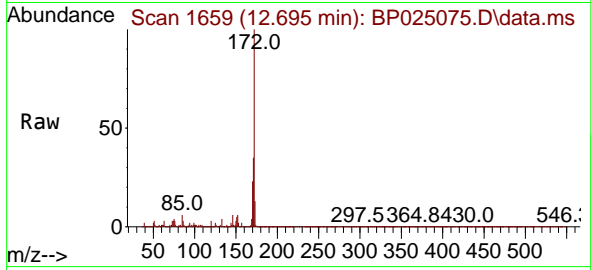


#45
 2-Fluorobiphenyl
 Concen: 79.265 ng
 RT: 12.695 min Scan# 1659
 Delta R.T. 0.000 min
 Lab File: BP025075.D
 Acq: 03 Jul 2025 12:25

Instrument : BNA_P
 ClientSampleId : SSTDICC040

Tgt Ion:172 Resp: 5132522

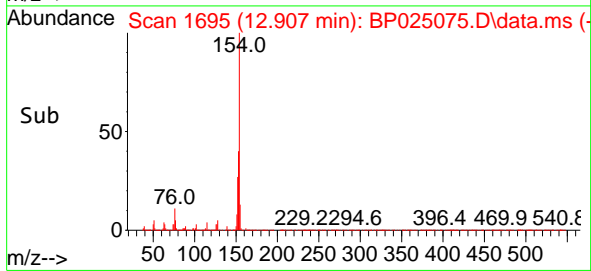
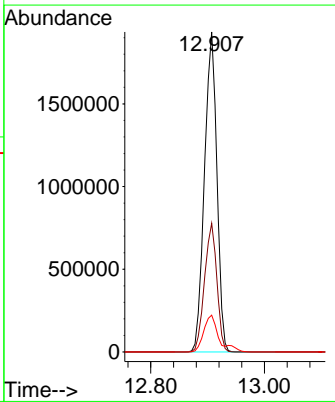
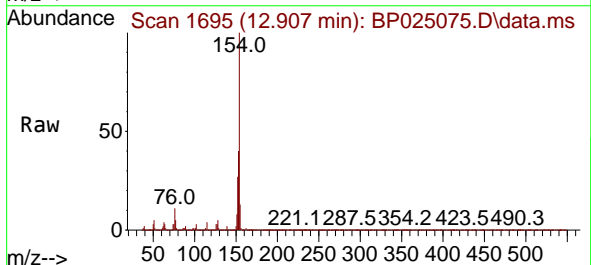
Ion	Ratio	Lower	Upper
172	100		
171	35.2	28.2	42.2
170	23.4	18.7	28.1

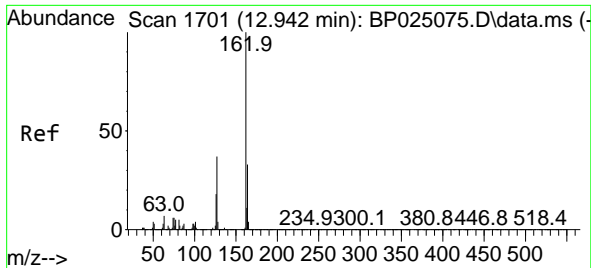


#46
 1,1'-Biphenyl
 Concen: 39.957 ng
 RT: 12.907 min Scan# 1695
 Delta R.T. 0.000 min
 Lab File: BP025075.D
 Acq: 03 Jul 2025 12:25

Tgt Ion:154 Resp: 2916222

Ion	Ratio	Lower	Upper
154	100		
153	40.2	20.2	60.2
76	11.5	0.0	31.5



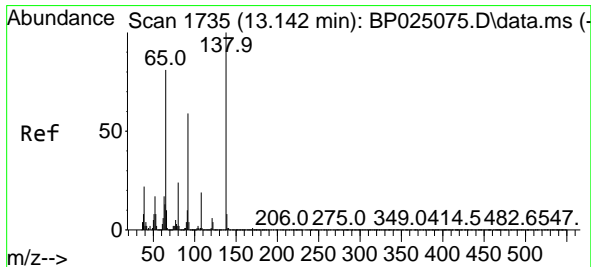
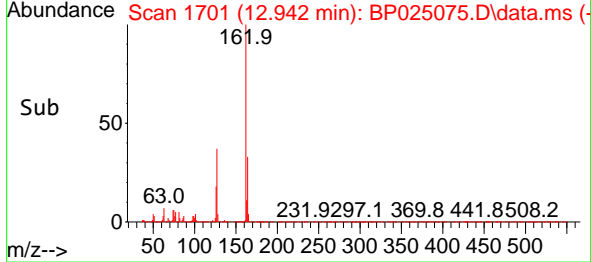
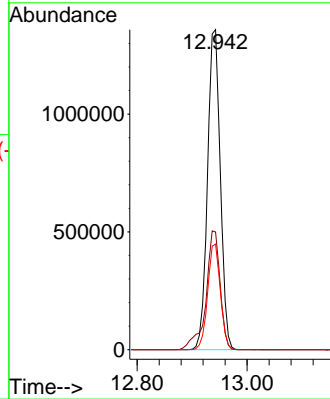
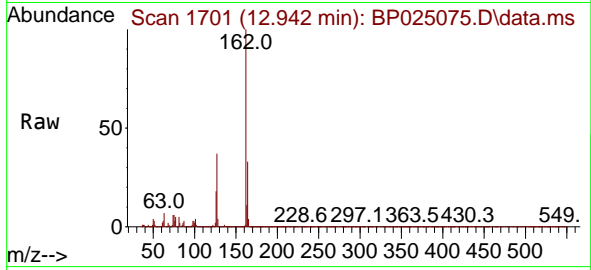


#47
 2-Chloronaphthalene
 Concen: 39.891 ng
 RT: 12.942 min Scan# 1701
 Delta R.T. 0.000 min
 Lab File: BP025075.D
 Acq: 03 Jul 2025 12:25

Instrument : BNA_P
 ClientSampleId : SSTDICC040

Tgt Ion: 162 Resp: 2188234

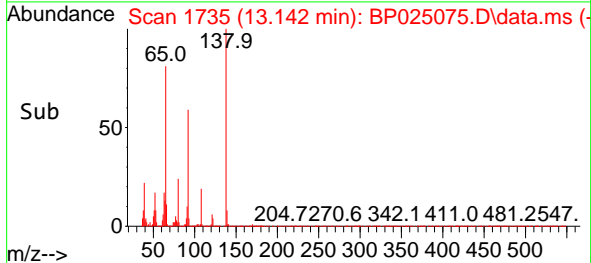
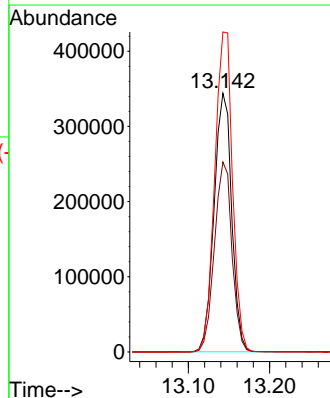
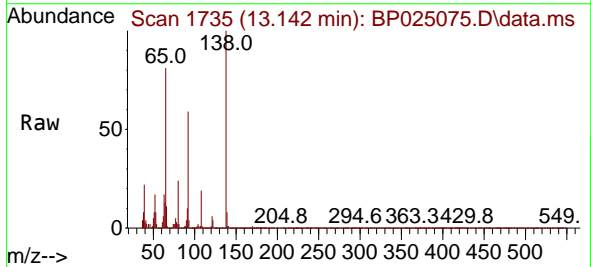
Ion	Ratio	Lower	Upper
162	100		
127	36.8	29.4	44.2
164	33.0	26.4	39.6

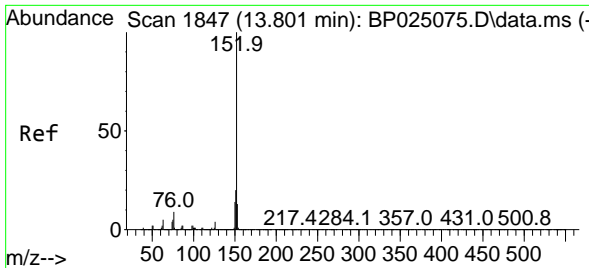


#48
 2-Nitroaniline
 Concen: 39.182 ng
 RT: 13.142 min Scan# 1735
 Delta R.T. 0.000 min
 Lab File: BP025075.D
 Acq: 03 Jul 2025 12:25

Tgt Ion: 65 Resp: 519267

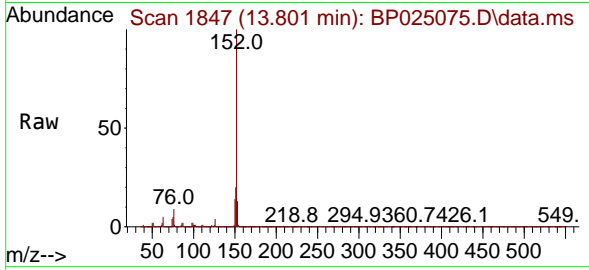
Ion	Ratio	Lower	Upper
65	100		
92	73.4	58.7	88.1
138	123.7	99.0	148.4



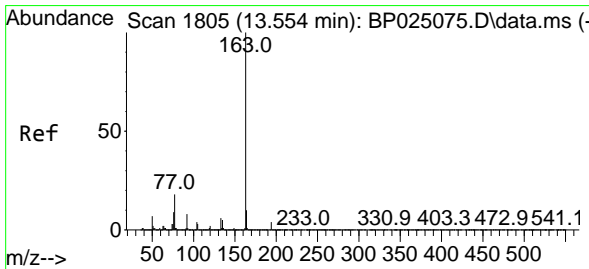
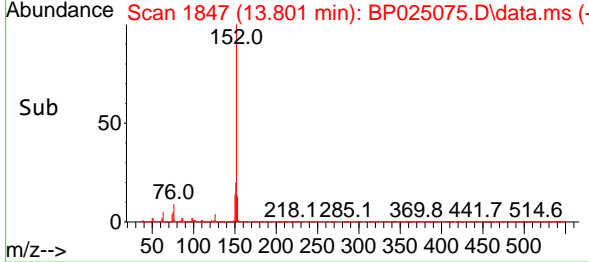
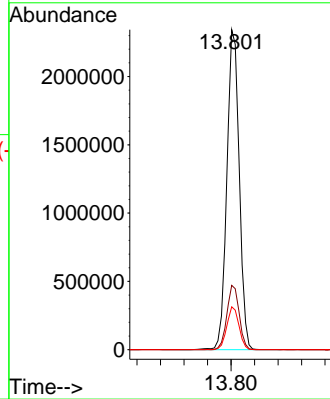


#49
 Acenaphthylene
 Concen: 40.657 ng
 RT: 13.801 min Scan# 1847
 Delta R.T. 0.000 min
 Lab File: BP025075.D
 Acq: 03 Jul 2025 12:25

Instrument : BNA_P
 ClientSampleId : SSTDICCC040

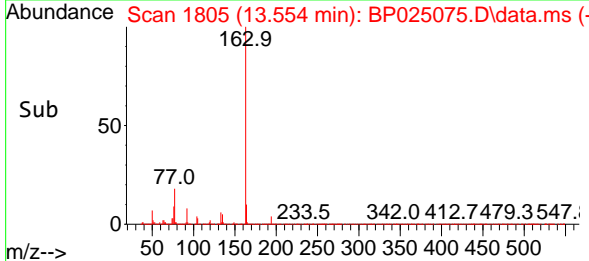
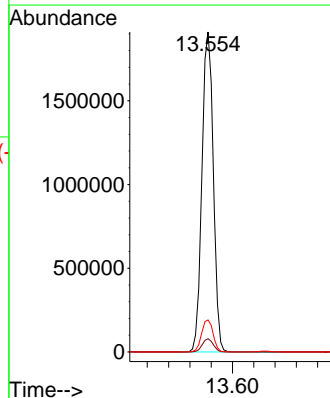
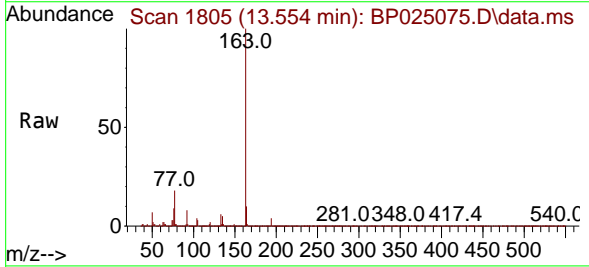


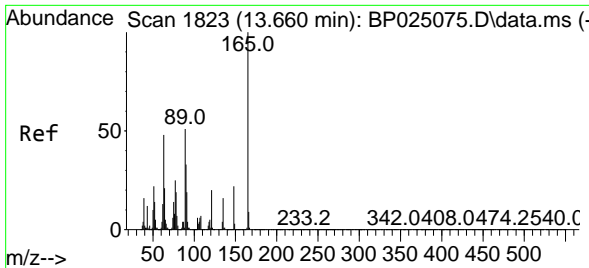
Tgt Ion:152 Resp: 3413485
 Ion Ratio Lower Upper
 152 100
 151 20.1 16.1 24.1
 153 13.4 10.7 16.1



#50
 Dimethylphthalate
 Concen: 40.234 ng
 RT: 13.554 min Scan# 1805
 Delta R.T. 0.000 min
 Lab File: BP025075.D
 Acq: 03 Jul 2025 12:25

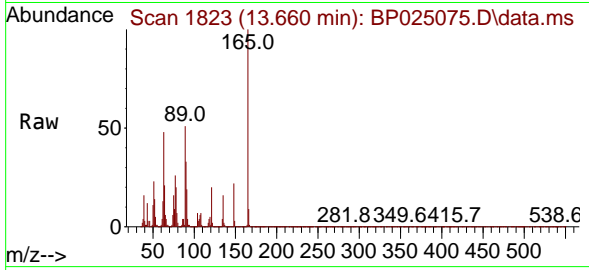
Tgt Ion:163 Resp: 2825141
 Ion Ratio Lower Upper
 163 100
 194 4.2 3.4 5.0
 164 10.0 8.0 12.0





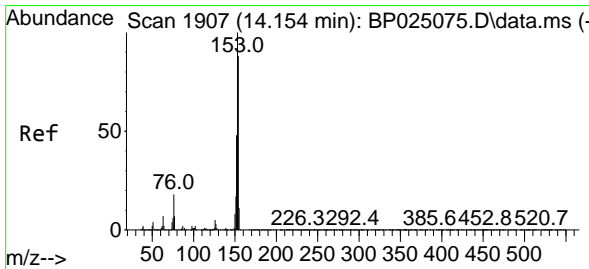
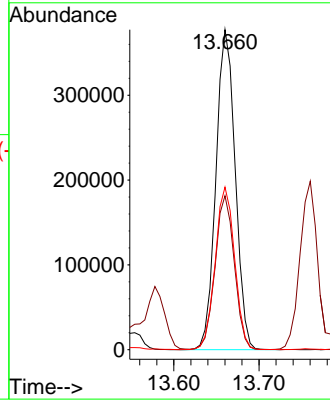
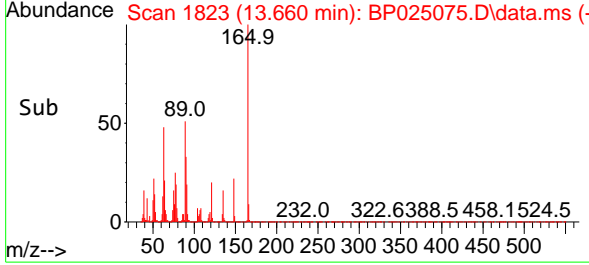
#51
 2,6-Dinitrotoluene
 Concen: 43.253 ng
 RT: 13.660 min Scan# 1823
 Delta R.T. 0.000 min
 Lab File: BP025075.D
 Acq: 03 Jul 2025 12:25

Instrument : BNA_P
 ClientSampleId : SSTDICC040

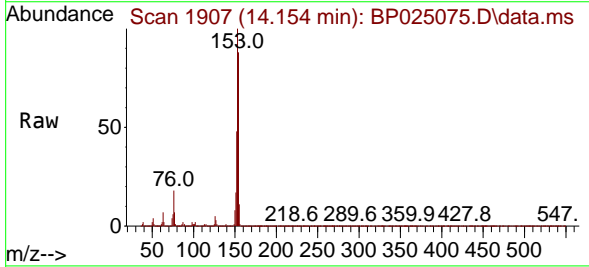


Tgt Ion:165 Resp: 592325

Ion	Ratio	Lower	Upper
165	100		
63	48.1	38.5	57.7
89	50.8	40.6	61.0

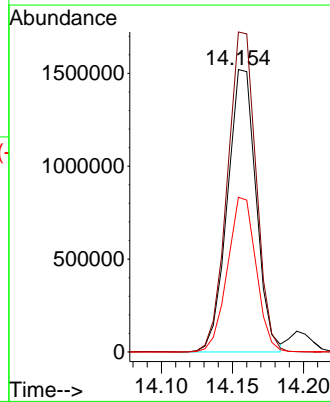
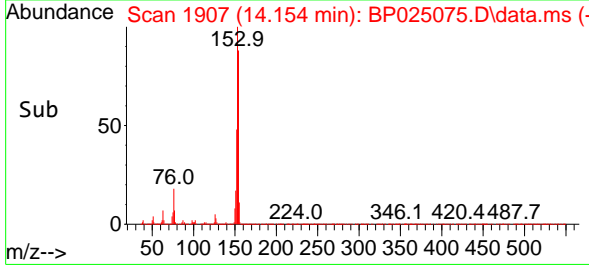


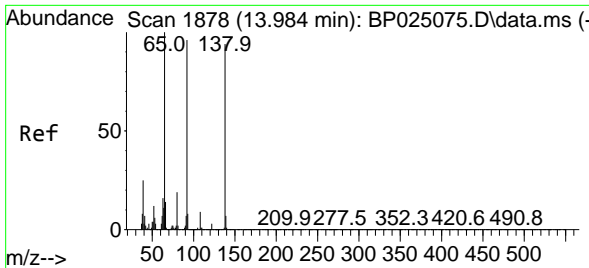
#52
 Acenaphthene
 Concen: 39.537 ng
 RT: 14.154 min Scan# 1907
 Delta R.T. 0.000 min
 Lab File: BP025075.D
 Acq: 03 Jul 2025 12:25



Tgt Ion:154 Resp: 2139419

Ion	Ratio	Lower	Upper
154	100		
153	113.3	90.6	136.0
152	54.8	43.8	65.8

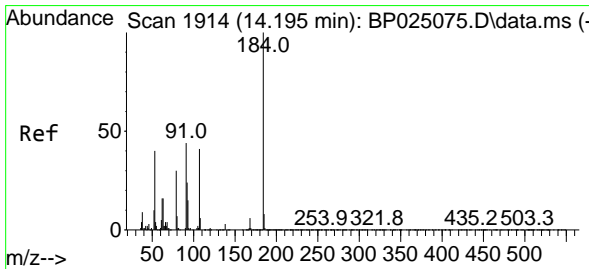
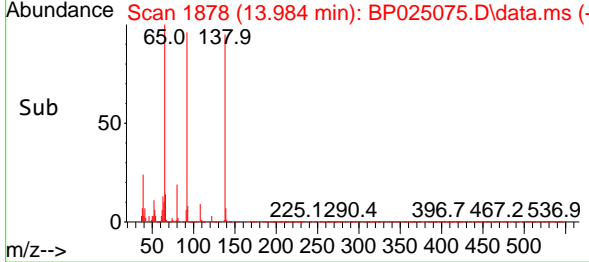
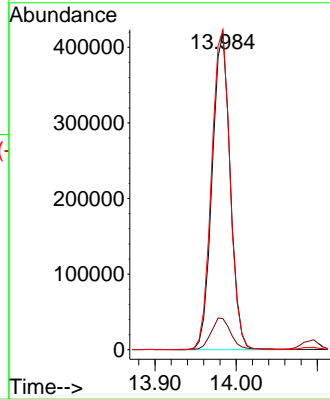
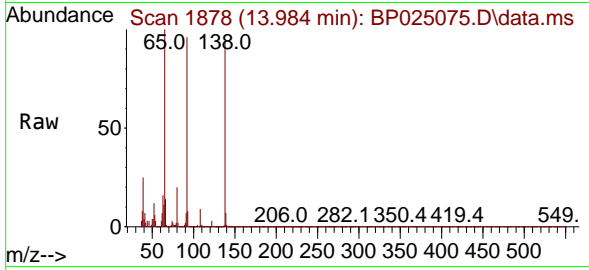




#53
 3-Nitroaniline
 Concen: 43.937 ng
 RT: 13.984 min Scan# 11
 Delta R.T. 0.000 min
 Lab File: BP025075.D
 Acq: 03 Jul 2025 12:25

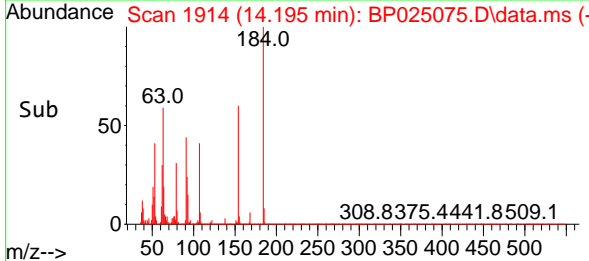
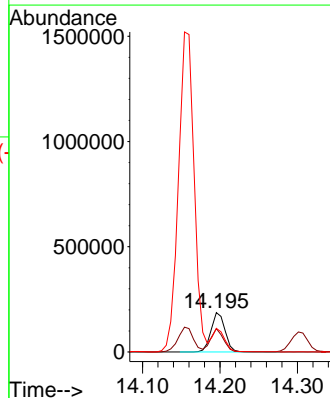
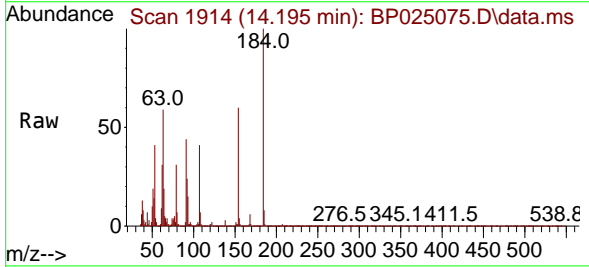
Instrument :
 BNA_P
 ClientSampleId :
 SSTDICC040

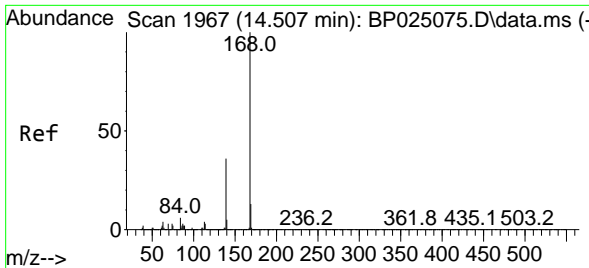
Tgt Ion:138 Resp: 644835
 Ion Ratio Lower Upper
 138 100
 108 9.8 7.8 11.8
 92 101.2 81.0 121.4



#54
 2,4-Dinitrophenol
 Concen: 38.110 ng
 RT: 14.195 min Scan# 1914
 Delta R.T. 0.000 min
 Lab File: BP025075.D
 Acq: 03 Jul 2025 12:25

Tgt Ion:184 Resp: 234827
 Ion Ratio Lower Upper
 184 100
 63 59.2 47.4 71.0
 154 59.8 47.8 71.8





#55
 Dibenzofuran
 Concen: 39.719 ng
 RT: 14.507 min Scan# 1967
 Delta R.T. 0.000 min
 Lab File: BP025075.D
 Acq: 03 Jul 2025 12:25

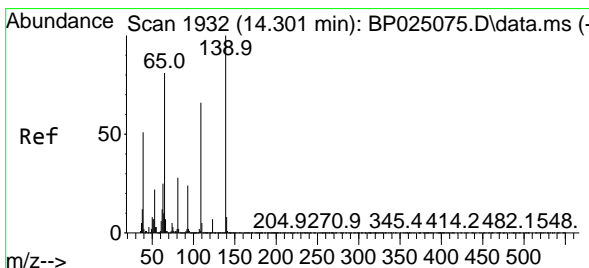
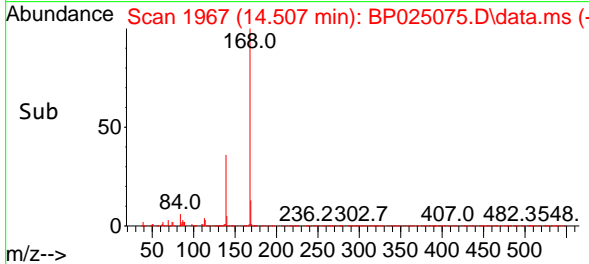
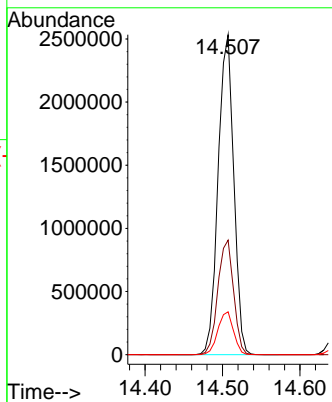
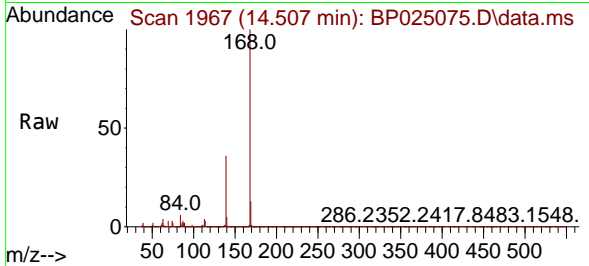
Instrument :

BNA_P

ClientSampleId :

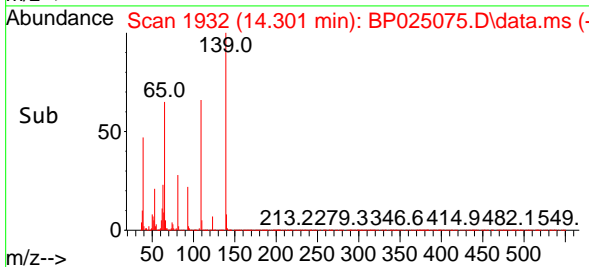
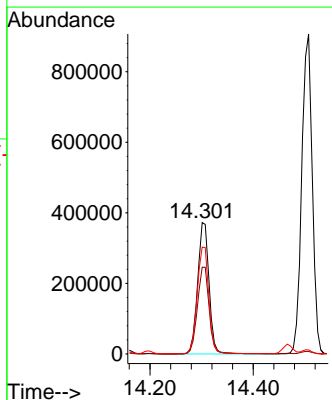
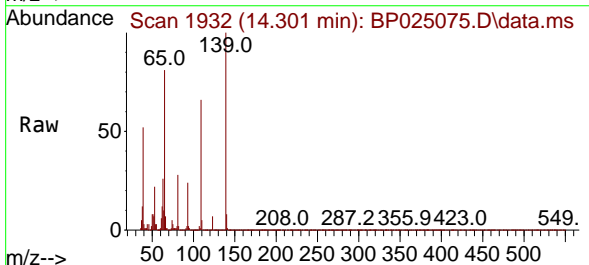
SSTDICCC040

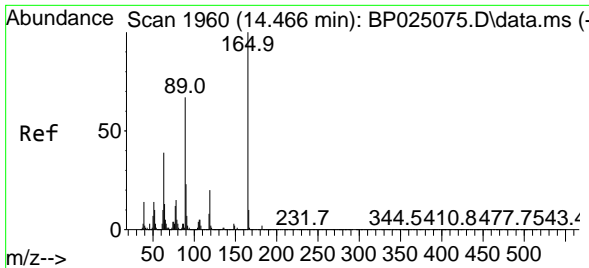
Tgt Ion:168 Resp: 3547100
 Ion Ratio Lower Upper
 168 100
 139 35.8 28.6 43.0
 169 13.4 10.7 16.1



#56
 4-Nitrophenol
 Concen: 42.263 ng
 RT: 14.301 min Scan# 1932
 Delta R.T. 0.000 min
 Lab File: BP025075.D
 Acq: 03 Jul 2025 12:25

Tgt Ion:139 Resp: 572405
 Ion Ratio Lower Upper
 139 100
 109 65.9 45.9 85.9
 65 81.4 61.4 101.4

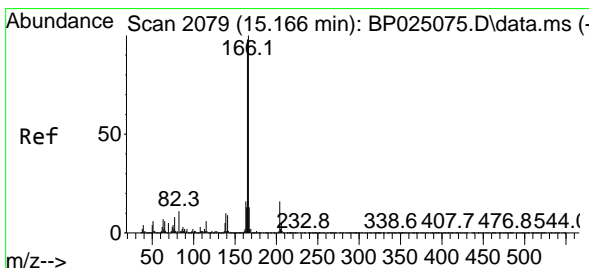
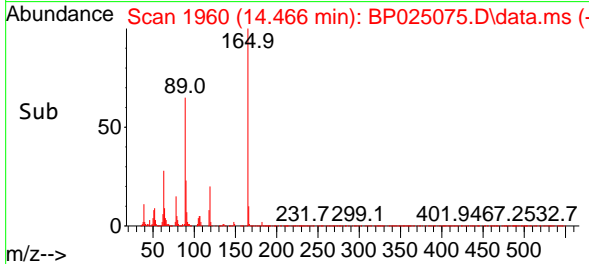
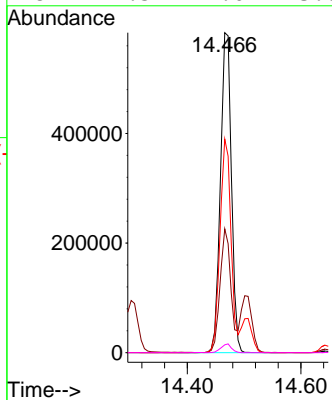
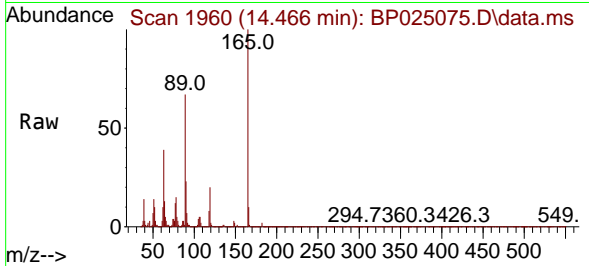




#57
 2,4-Dinitrotoluene
 Concen: 39.572 ng
 RT: 14.466 min Scan# 1960
 Delta R.T. -0.000 min
 Lab File: BP025075.D
 Acq: 03 Jul 2025 12:25

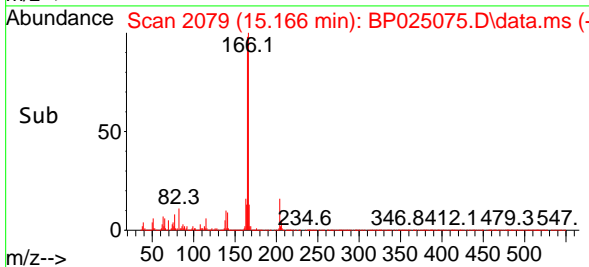
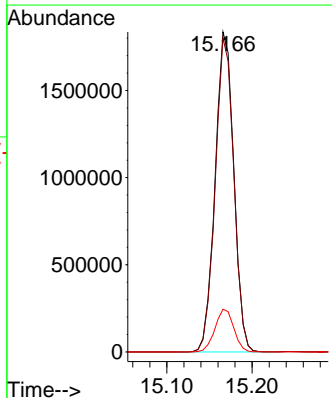
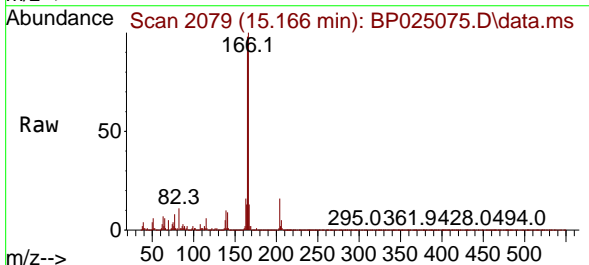
Instrument :
 BNA_P
 ClientSampleId :
 SSTDICC040

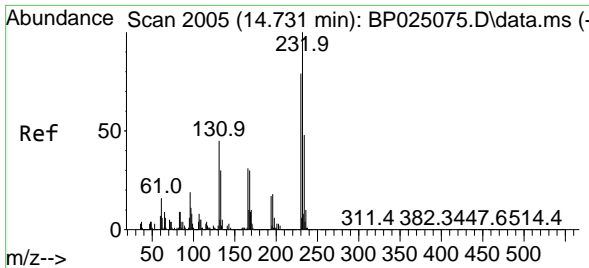
Tgt Ion	Ratio	Lower	Upper
165	100		
63	38.7	31.0	46.4
89	66.7	53.4	80.0
182	2.5	2.0	3.0



#58
 Fluorene
 Concen: 40.454 ng
 RT: 15.166 min Scan# 2079
 Delta R.T. 0.000 min
 Lab File: BP025075.D
 Acq: 03 Jul 2025 12:25

Tgt Ion	Ratio	Lower	Upper
166	100		
165	98.2	78.6	117.8
167	13.4	10.7	16.1

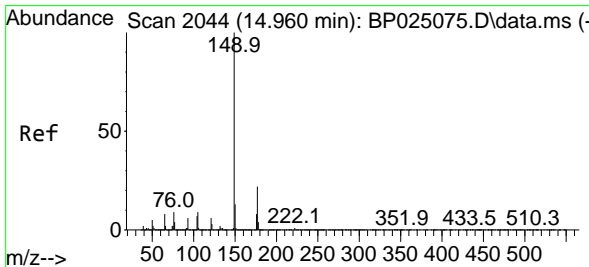
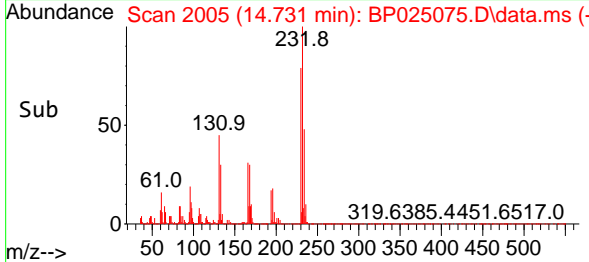
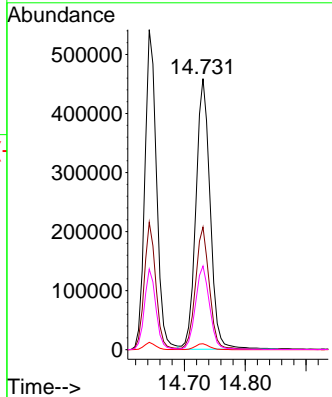
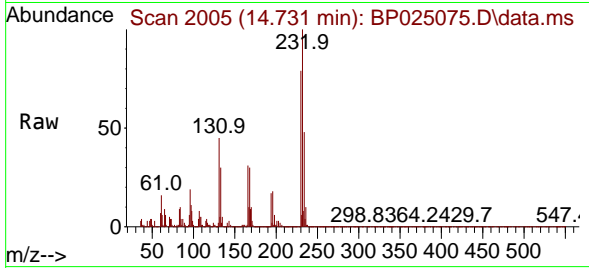




#59
 2,3,4,6-Tetrachlorophenol
 Concen: 41.458 ng
 RT: 14.731 min Scan# 2005
 Delta R.T. 0.000 min
 Lab File: BP025075.D
 Acq: 03 Jul 2025 12:25

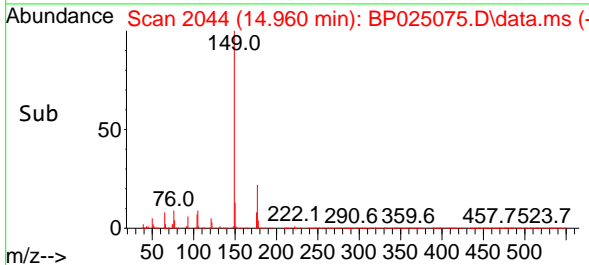
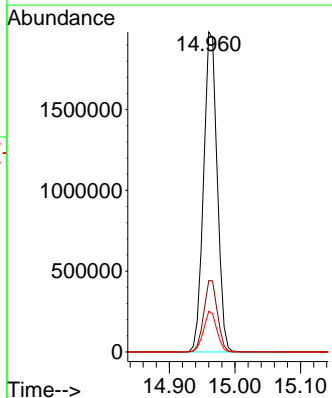
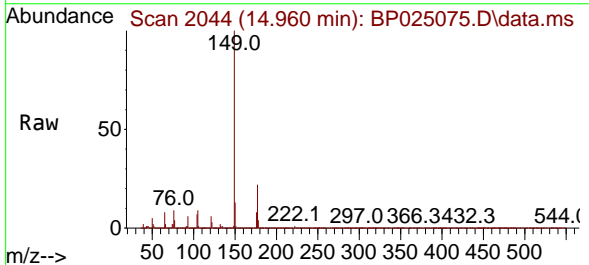
Instrument : BNA_P
 ClientSampleId : SSTDICCC040

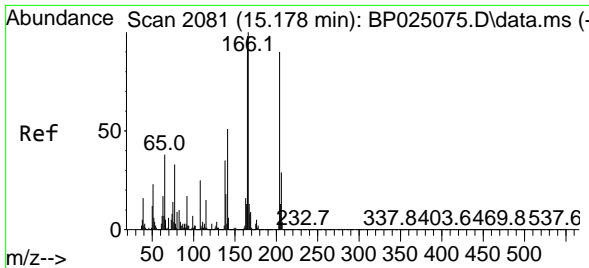
Tgt Ion	Resp	Lower	Upper
232	100		
131	44.6	35.7	53.5
130	2.2	1.8	2.6
166	30.5	24.4	36.6



#60
 Diethylphthalate
 Concen: 40.639 ng
 RT: 14.960 min Scan# 2044
 Delta R.T. 0.000 min
 Lab File: BP025075.D
 Acq: 03 Jul 2025 12:25

Tgt Ion	Resp	Lower	Upper
149	100		
177	22.3	17.8	26.8
150	12.7	10.2	15.2



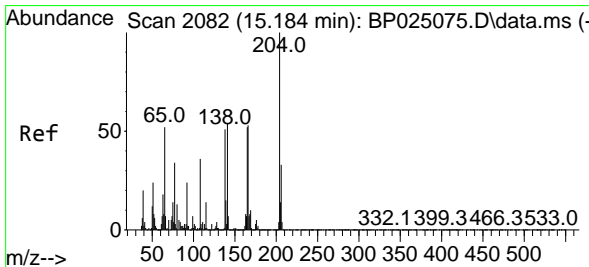
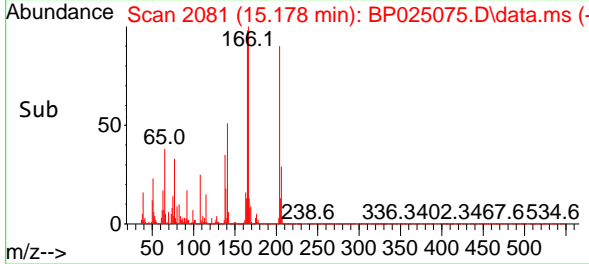
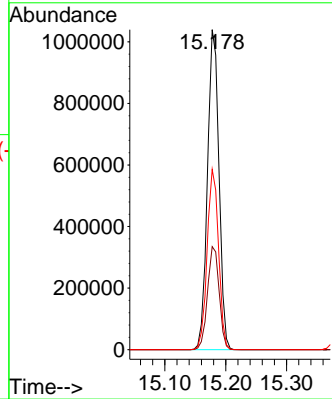
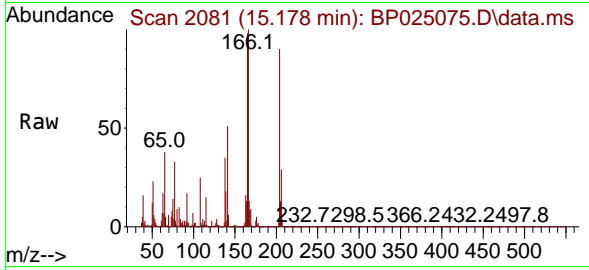


#61
 4-Chlorophenyl-phenylether
 Concen: 39.829 ng
 RT: 15.178 min Scan# 2081
 Delta R.T. 0.000 min
 Lab File: BP025075.D
 Acq: 03 Jul 2025 12:25

Instrument :
 BNA_P
 ClientSampleId :
 SSTDICC040

Tgt Ion:204 Resp: 1361531

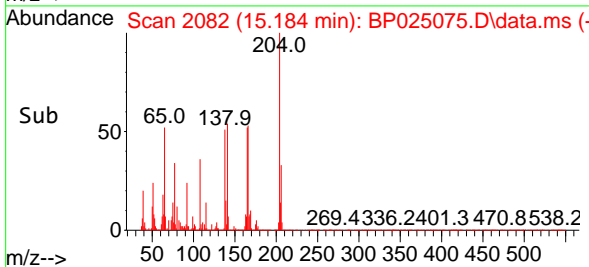
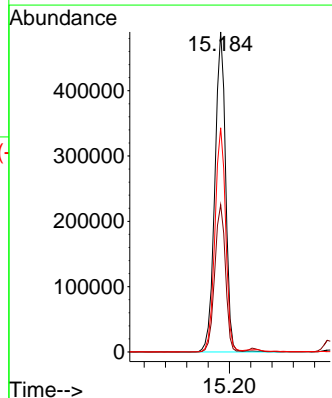
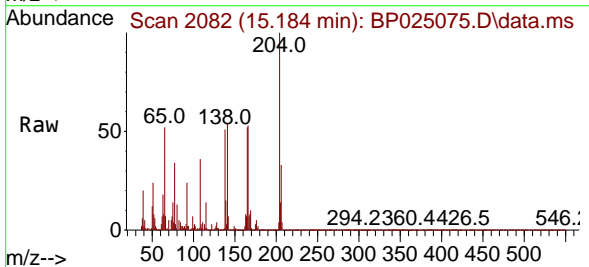
Ion	Ratio	Lower	Upper
204	100		
206	32.2	25.8	38.6
141	56.4	45.1	67.7

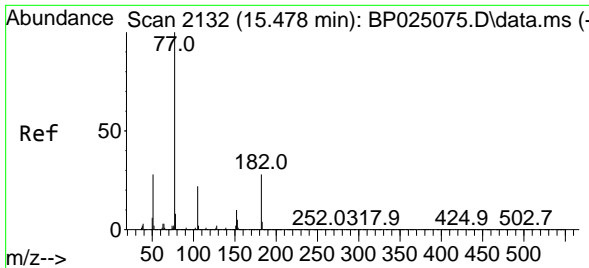


#62
 4-Nitroaniline
 Concen: 44.618 ng
 RT: 15.184 min Scan# 2082
 Delta R.T. 0.000 min
 Lab File: BP025075.D
 Acq: 03 Jul 2025 12:25

Tgt Ion:138 Resp: 686633

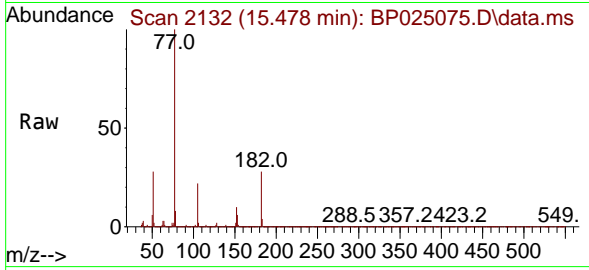
Ion	Ratio	Lower	Upper
138	100		
92	46.0	26.0	66.0
108	70.0	50.0	90.0





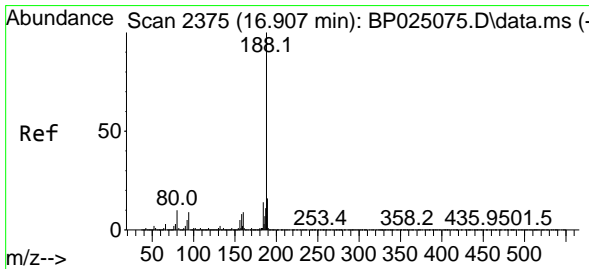
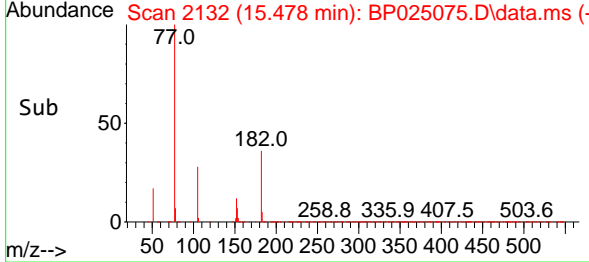
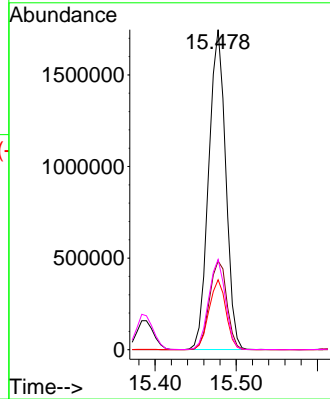
#63
 Azobenzene
 Concen: 40.400 ng
 RT: 15.478 min Scan# 2132
 Delta R.T. 0.000 min
 Lab File: BP025075.D
 Acq: 03 Jul 2025 12:25

Instrument : BNA_P
 ClientSampleId : SSTDICC040



Tgt Ion: 77 Resp: 2537142

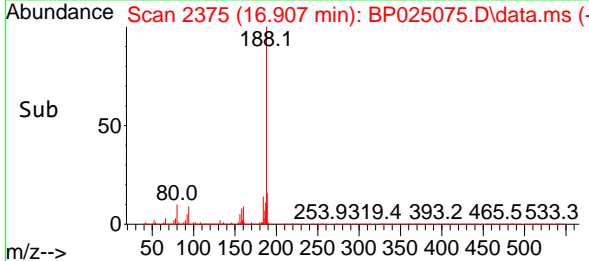
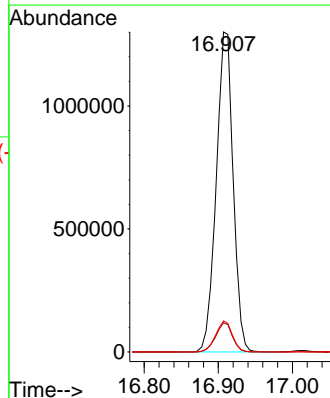
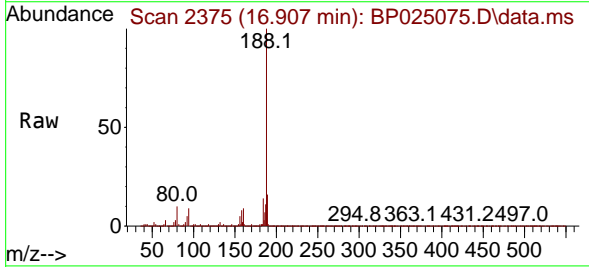
Ion	Ratio	Lower	Upper
77	100		
182	27.7	7.7	47.7
105	21.9	1.9	41.9
51	28.2	8.2	48.2

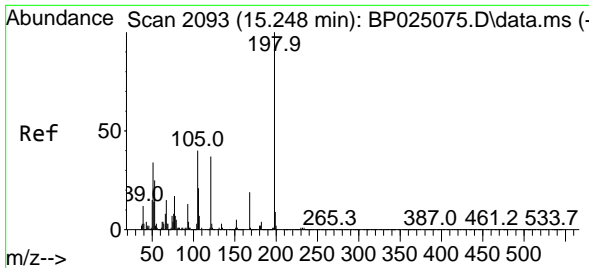


#64
 Phenanthrene-d10
 Concen: 20.000 ng
 RT: 16.907 min Scan# 2375
 Delta R.T. -0.000 min
 Lab File: BP025075.D
 Acq: 03 Jul 2025 12:25

Tgt Ion: 188 Resp: 2062708

Ion	Ratio	Lower	Upper
188	100		
94	9.1	7.3	10.9
80	9.7	7.8	11.6

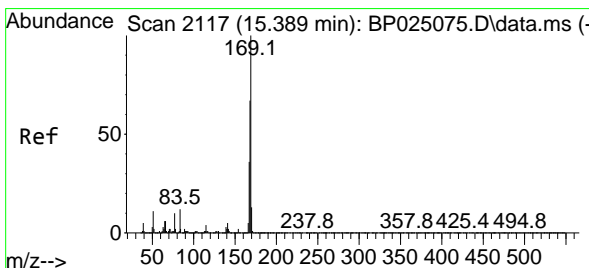
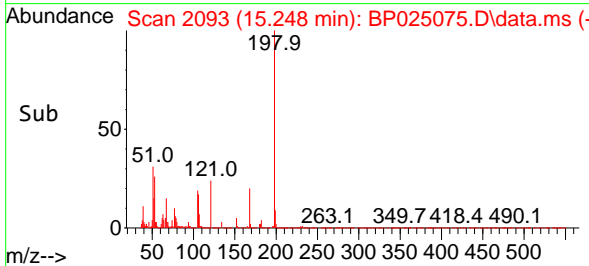
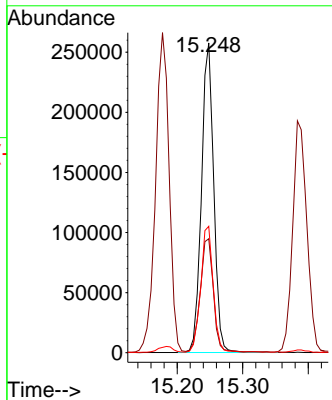
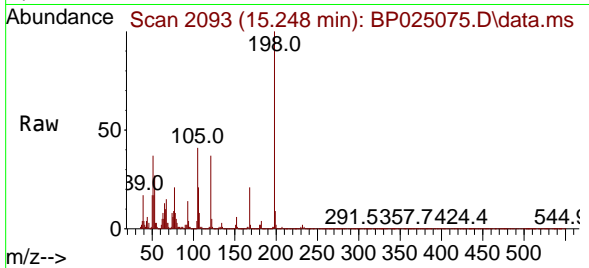




#65
 4,6-Dinitro-2-methylphenol
 Concen: 37.190 ng
 RT: 15.248 min Scan# 2093
 Delta R.T. 0.000 min
 Lab File: BP025075.D
 Acq: 03 Jul 2025 12:25

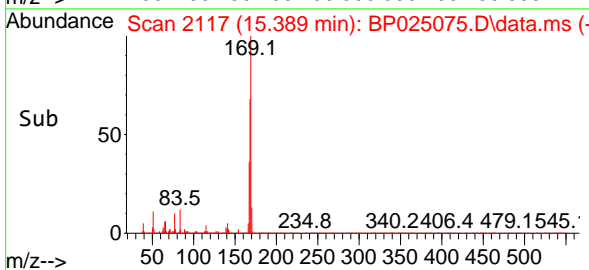
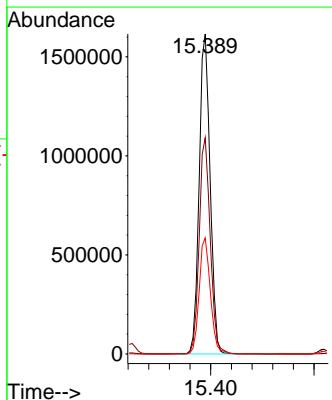
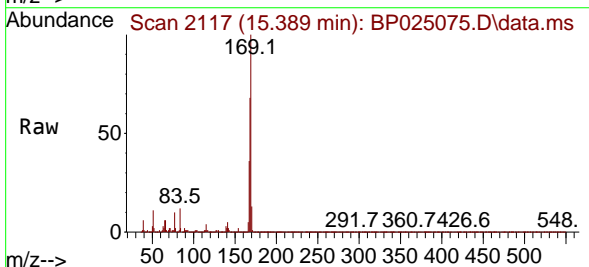
Instrument : BNA_P
 ClientSampleId : SSTDICC040

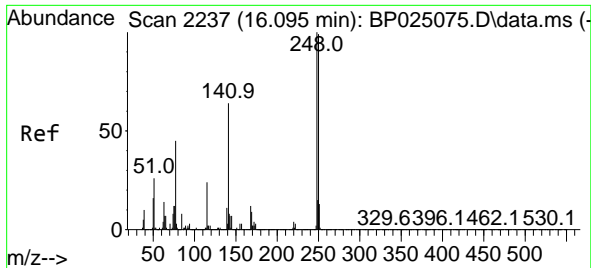
Tgt Ion	Resp	Lower	Upper
198	100		
51	36.8	16.8	56.8
105	40.8	20.8	60.8



#66
 n-Nitrosodiphenylamine
 Concen: 40.069 ng
 RT: 15.389 min Scan# 2117
 Delta R.T. 0.000 min
 Lab File: BP025075.D
 Acq: 03 Jul 2025 12:25

Tgt Ion	Resp	Lower	Upper
169	100		
168	67.6	54.1	81.1
167	36.3	29.0	43.6

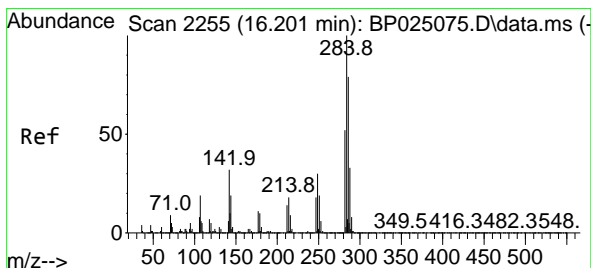
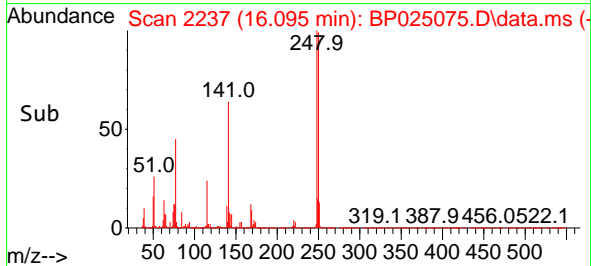
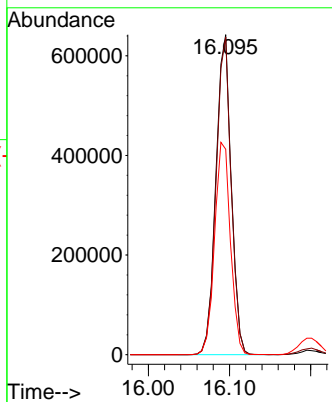
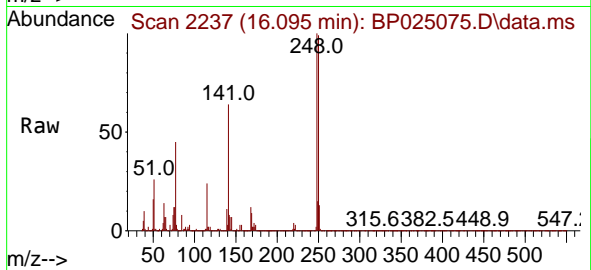




#67
 4-Bromophenyl-phenylether
 Concen: 39.961 ng
 RT: 16.095 min Scan# 2237
 Delta R.T. 0.000 min
 Lab File: BP025075.D
 Acq: 03 Jul 2025 12:25

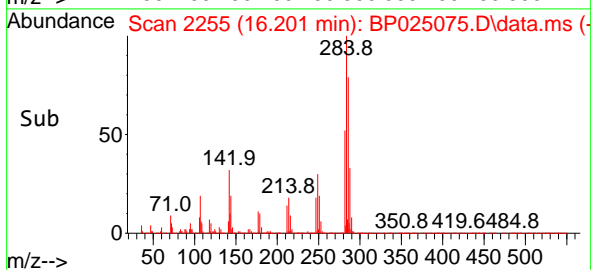
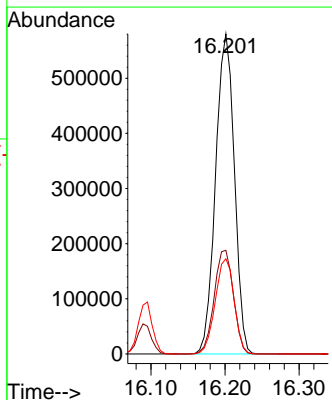
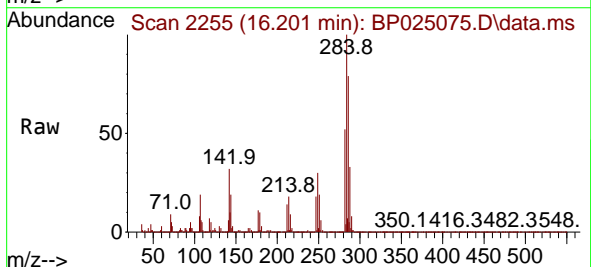
Instrument : BNA_P
 ClientSampleId : SSTDICC040

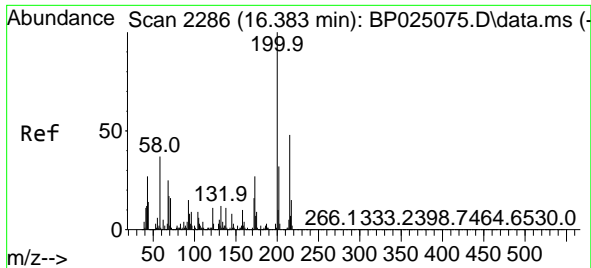
Tgt Ion	Resp	Lower	Upper
248	100		
250	99.3	79.4	119.2
141	64.2	51.4	77.0



#68
 Hexachlorobenzene
 Concen: 39.541 ng
 RT: 16.201 min Scan# 2255
 Delta R.T. 0.000 min
 Lab File: BP025075.D
 Acq: 03 Jul 2025 12:25

Tgt Ion	Resp	Lower	Upper
284	100		
142	32.4	25.9	38.9
249	29.8	23.8	35.8

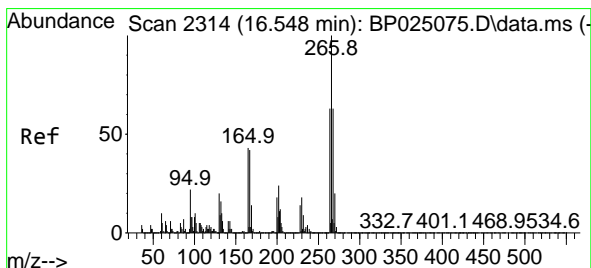
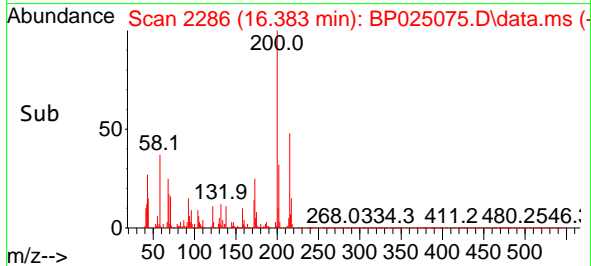
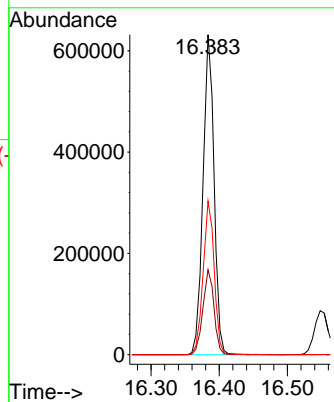
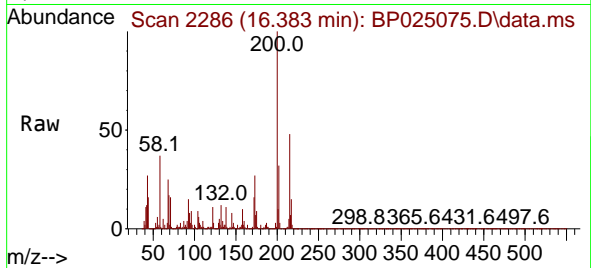




#69
 Atrazine
 Concen: 41.121 ng
 RT: 16.383 min Scan# 211
 Delta R.T. 0.000 min
 Lab File: BP025075.D
 Acq: 03 Jul 2025 12:25

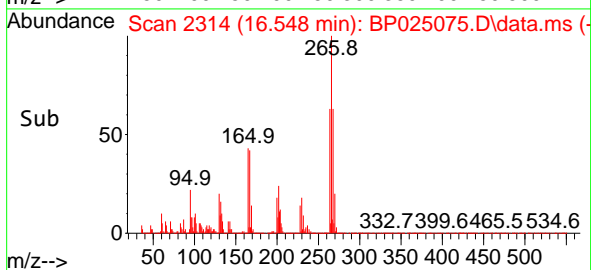
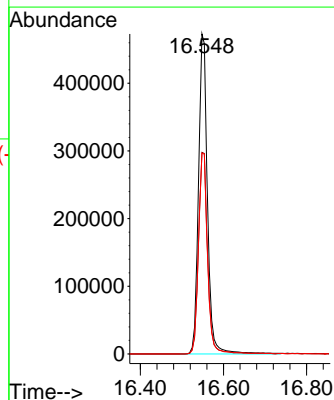
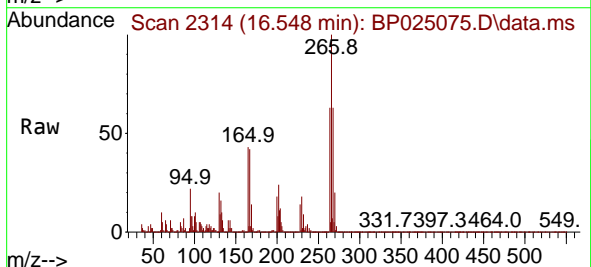
Instrument :
 BNA_P
 ClientSampleId :
 SSTDICC040

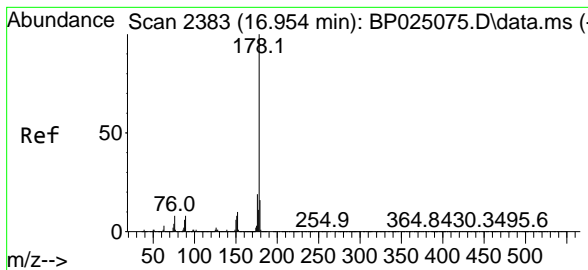
Tgt Ion:200 Resp: 711320
 Ion Ratio Lower Upper
 200 100
 173 26.6 6.6 46.6
 215 48.0 28.0 68.0



#70
 Pentachlorophenol
 Concen: 40.604 ng
 RT: 16.548 min Scan# 2314
 Delta R.T. 0.000 min
 Lab File: BP025075.D
 Acq: 03 Jul 2025 12:25

Tgt Ion:266 Resp: 707874
 Ion Ratio Lower Upper
 266 100
 268 63.0 50.4 75.6
 264 62.7 50.2 75.2



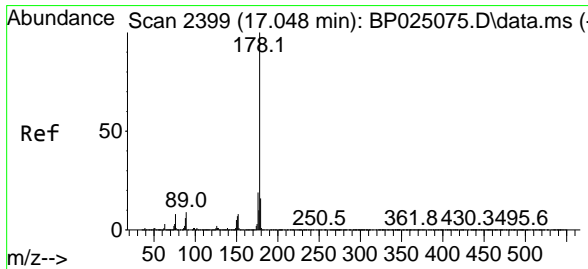
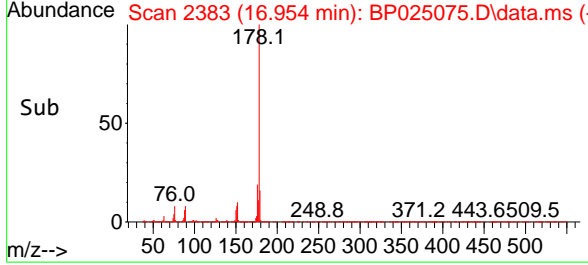
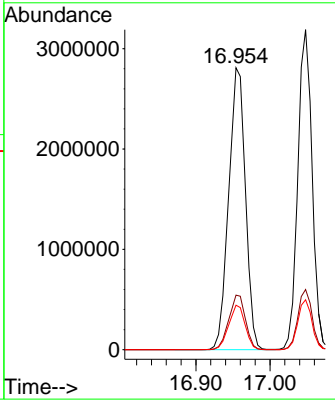
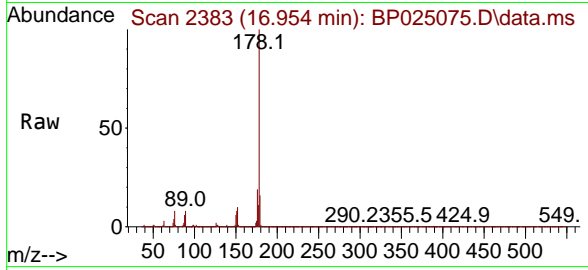


#71
 Phenanthrene
 Concen: 39.993 ng
 RT: 16.954 min Scan# 21
 Delta R.T. 0.000 min
 Lab File: BP025075.D
 Acq: 03 Jul 2025 12:25

Instrument : BNA_P
 ClientSampleId : SSTDICCC040

Tgt Ion:178 Resp: 4407982

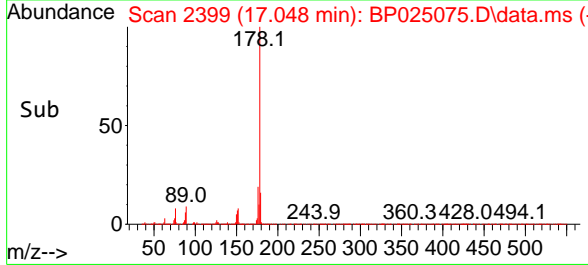
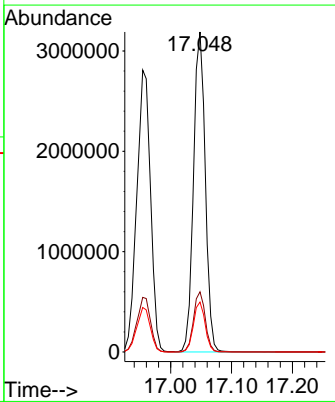
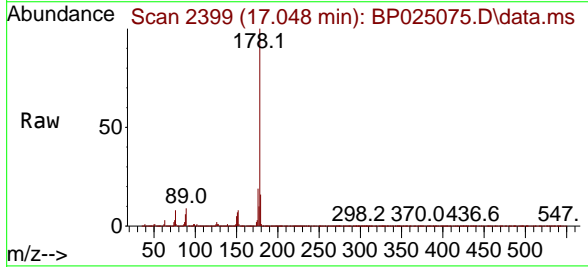
Ion	Ratio	Lower	Upper
178	100		
176	19.3	15.4	23.2
179	15.8	12.6	19.0

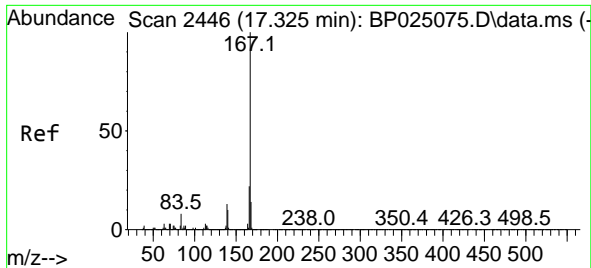


#72
 Anthracene
 Concen: 40.434 ng
 RT: 17.048 min Scan# 2399
 Delta R.T. 0.000 min
 Lab File: BP025075.D
 Acq: 03 Jul 2025 12:25

Tgt Ion:178 Resp: 4275492

Ion	Ratio	Lower	Upper
178	100		
176	18.8	15.0	22.6
179	15.6	12.5	18.7



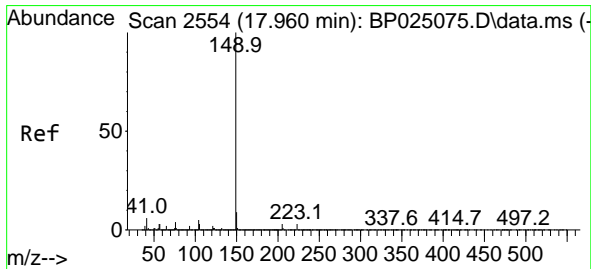
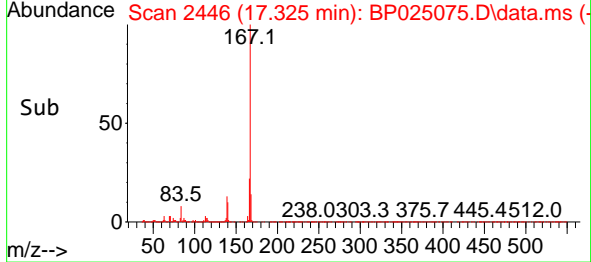
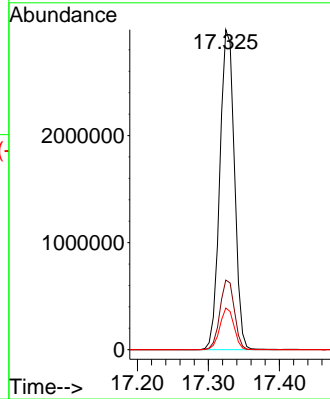
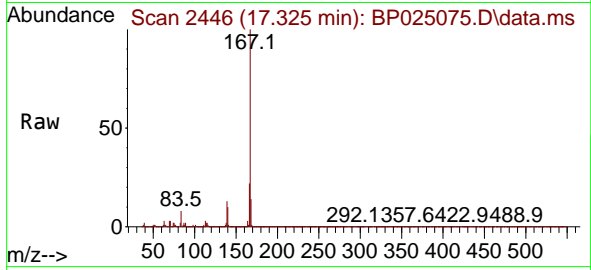


#73
 Carbazole
 Concen: 41.064 ng
 RT: 17.325 min Scan# 2446
 Delta R.T. 0.000 min
 Lab File: BP025075.D
 Acq: 03 Jul 2025 12:25

Instrument : BNA_P
 ClientSampleId : SSTDICCC040

Tgt Ion:167 Resp: 4245502

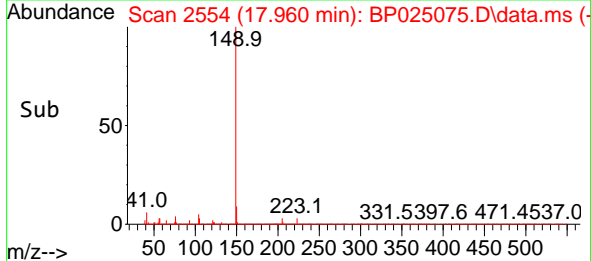
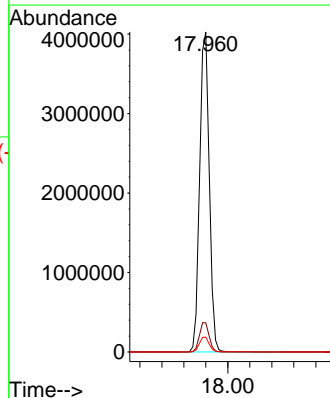
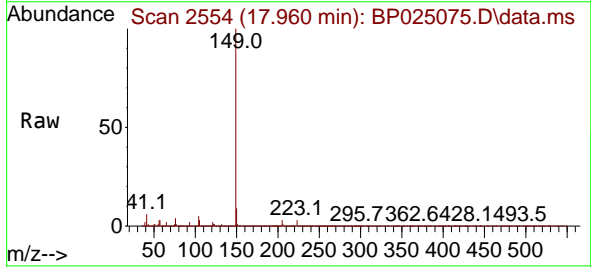
Ion	Ratio	Lower	Upper
167	100		
166	21.7	17.4	26.0
139	13.0	10.4	15.6

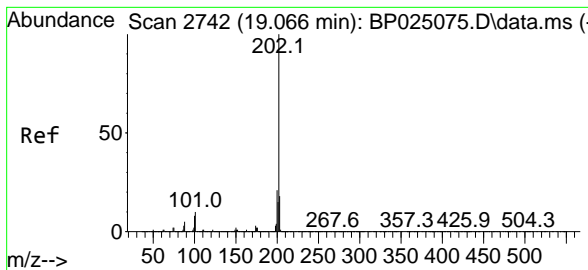


#74
 Di-n-butylphthalate
 Concen: 42.536 ng
 RT: 17.960 min Scan# 2554
 Delta R.T. 0.000 min
 Lab File: BP025075.D
 Acq: 03 Jul 2025 12:25

Tgt Ion:149 Resp: 4897263

Ion	Ratio	Lower	Upper
149	100		
150	9.1	7.3	10.9
104	4.7	3.8	5.6





#75
 Fluoranthene
 Concen: 41.300 ng
 RT: 19.066 min Scan# 21
 Delta R.T. 0.000 min
 Lab File: BP025075.D
 Acq: 03 Jul 2025 12:25

Instrument :

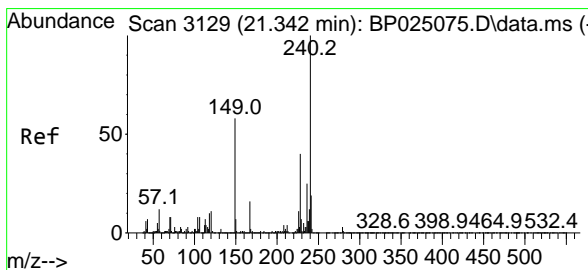
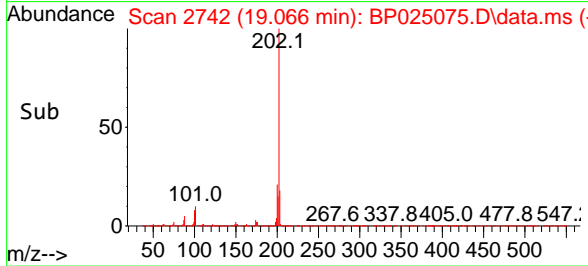
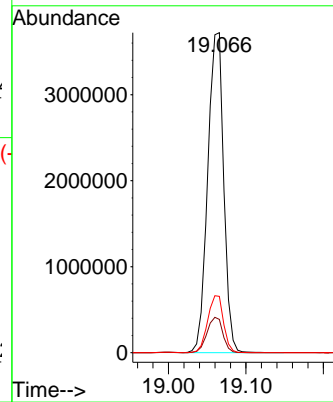
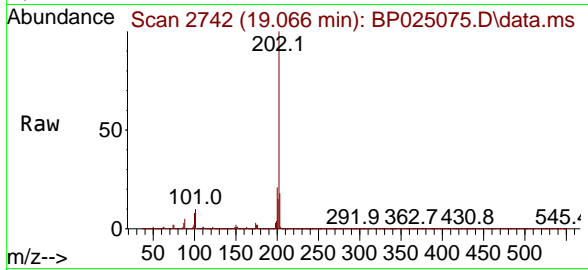
BNA_P

ClientSampleId :

SSTDICCC040

Tgt Ion:202 Resp: 5320900

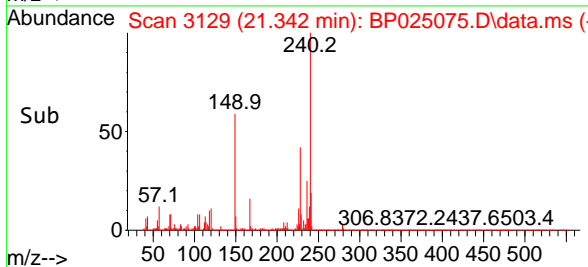
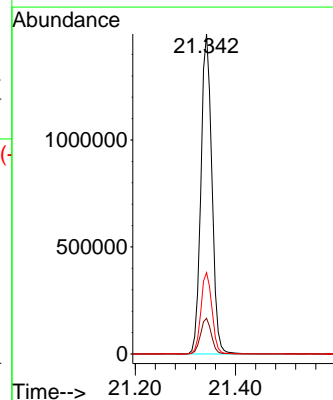
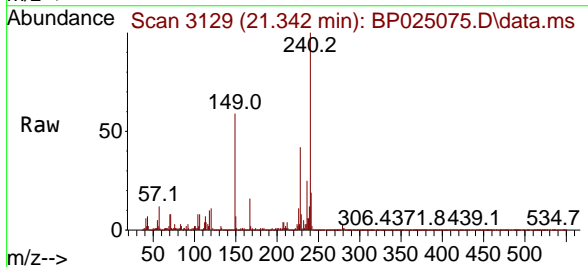
Ion	Ratio	Lower	Upper
202	100		
101	10.4	0.0	30.4
203	17.6	0.0	37.6

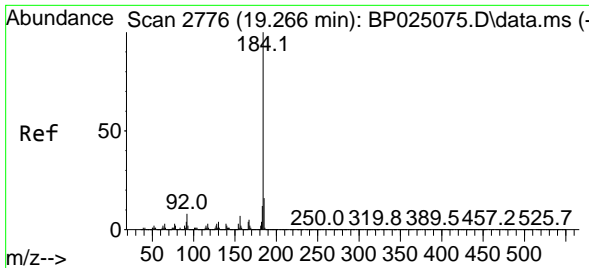


#76
 Chrysene-d12
 Concen: 20.000 ng
 RT: 21.342 min Scan# 3129
 Delta R.T. 0.000 min
 Lab File: BP025075.D
 Acq: 03 Jul 2025 12:25

Tgt Ion:240 Resp: 2262594

Ion	Ratio	Lower	Upper
240	100		
120	11.2	9.0	13.4
236	25.4	20.3	30.5



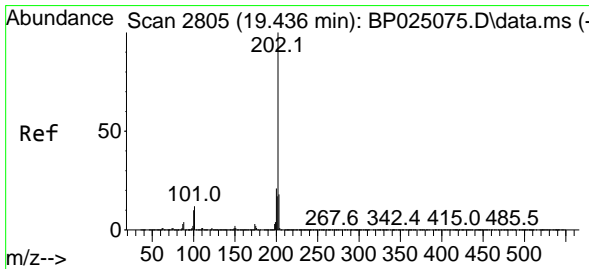
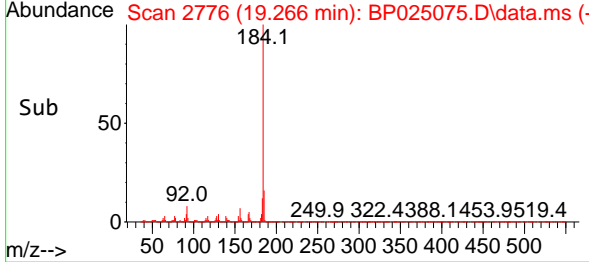
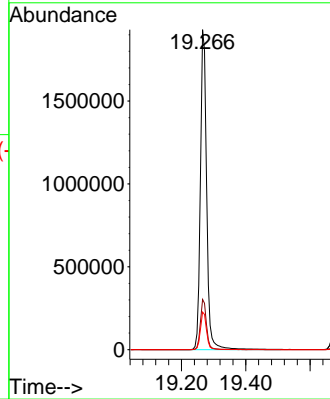
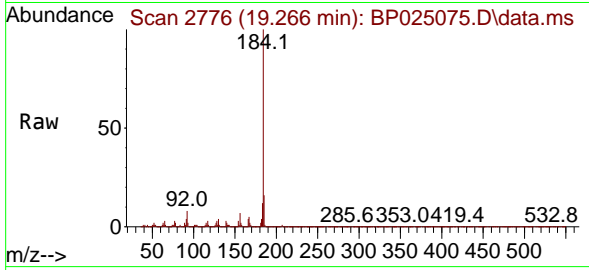


#77
 Benzidine
 Concen: 64.686 ng
 RT: 19.266 min Scan# 21
 Delta R.T. -0.000 min
 Lab File: BP025075.D
 Acq: 03 Jul 2025 12:25

Instrument :
 BNA_P
 ClientSampleId :
 SSTDICC040

Tgt Ion:184 Resp: 2584906

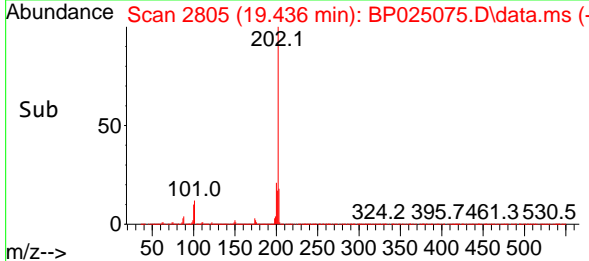
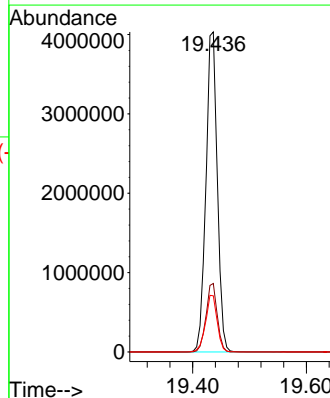
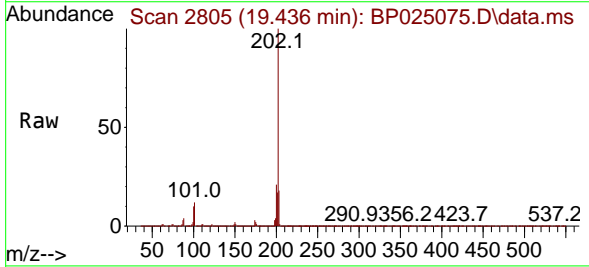
Ion	Ratio	Lower	Upper
184	100		
185	15.7	12.6	18.8
183	11.8	9.4	14.2

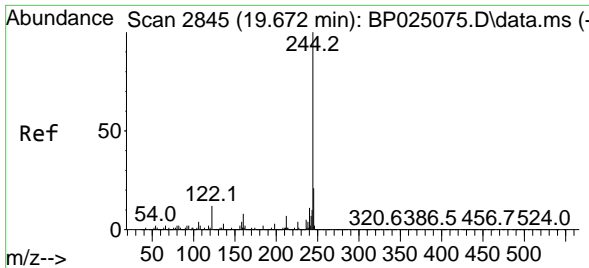


#78
 Pyrene
 Concen: 39.765 ng
 RT: 19.436 min Scan# 2805
 Delta R.T. 0.000 min
 Lab File: BP025075.D
 Acq: 03 Jul 2025 12:25

Tgt Ion:202 Resp: 5572652

Ion	Ratio	Lower	Upper
202	100		
200	21.4	17.1	25.7
203	17.6	14.1	21.1



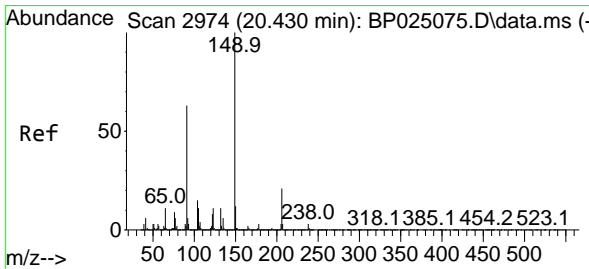
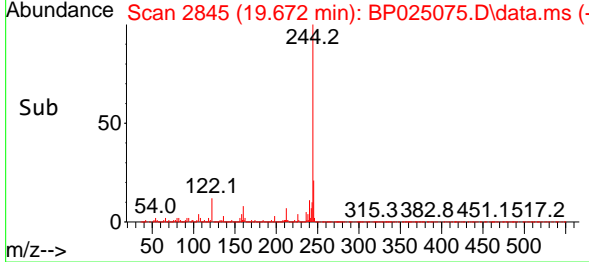
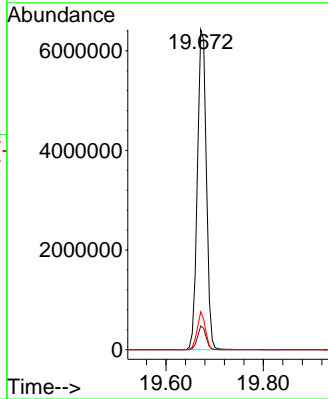
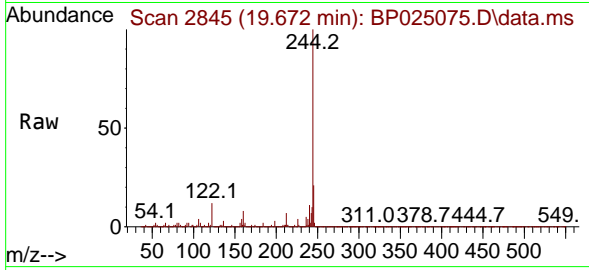


#79
 Terphenyl-d14
 Concen: 80.394 ng
 RT: 19.672 min Scan# 2845
 Delta R.T. 0.000 min
 Lab File: BP025075.D
 Acq: 03 Jul 2025 12:25

Instrument :
 BNA_P
 ClientSampleId :
 SSTDICC040

Tgt Ion:244 Resp: 8276493

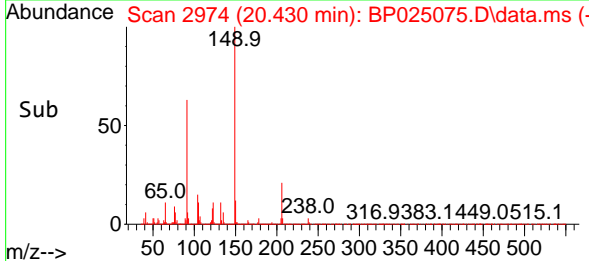
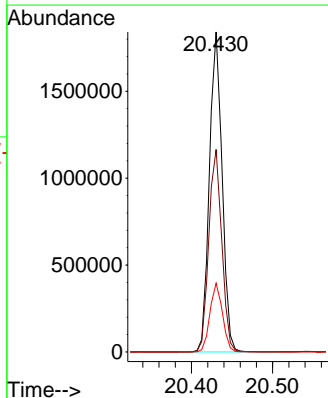
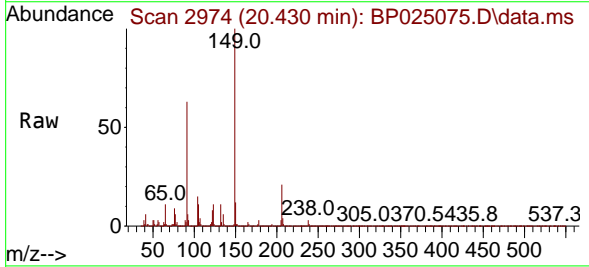
Ion	Ratio	Lower	Upper
244	100		
212	7.4	5.9	8.9
122	11.8	9.4	14.2

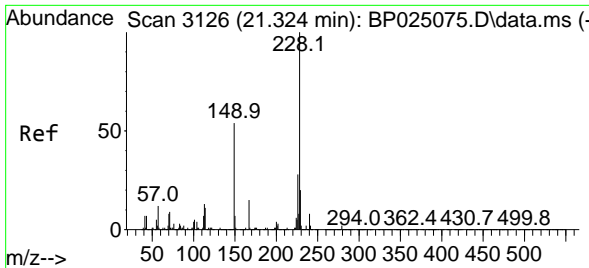


#80
 Butylbenzylphthalate
 Concen: 37.765 ng
 RT: 20.430 min Scan# 2974
 Delta R.T. 0.000 min
 Lab File: BP025075.D
 Acq: 03 Jul 2025 12:25

Tgt Ion:149 Resp: 1993151

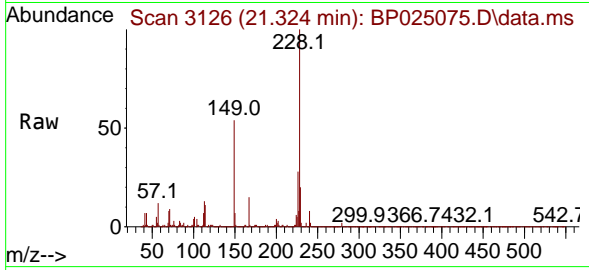
Ion	Ratio	Lower	Upper
149	100		
91	63.3	50.6	76.0
206	21.5	17.2	25.8



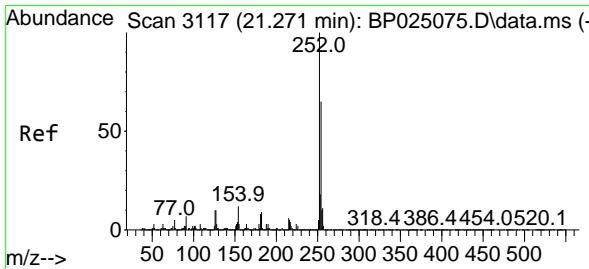
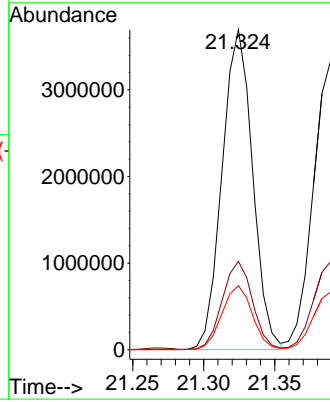
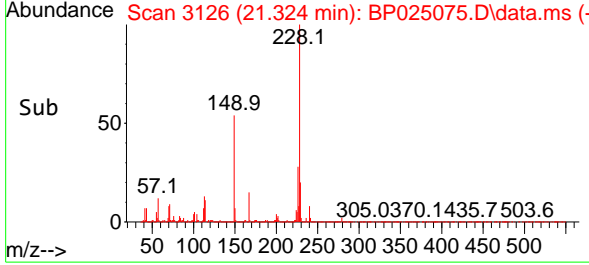


#81
 Benzo(a)anthracene
 Concen: 40.169 ng
 RT: 21.324 min Scan# 3126
 Delta R.T. 0.000 min
 Lab File: BP025075.D
 Acq: 03 Jul 2025 12:25

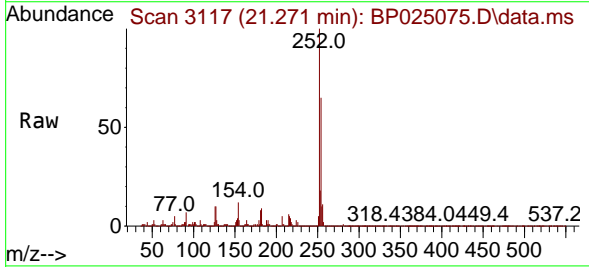
Instrument : BNA_P
 ClientSampleId : SSTDICCC040



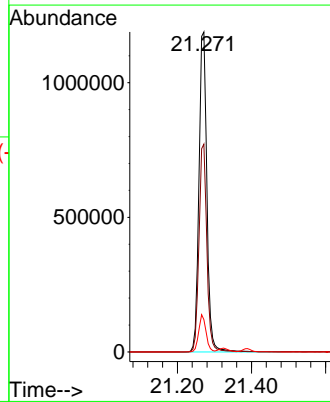
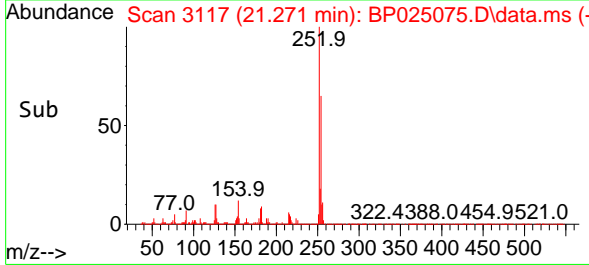
Tgt Ion:228 Resp: 5507840
 Ion Ratio Lower Upper
 228 100
 226 27.6 22.1 33.1
 229 20.0 16.0 24.0

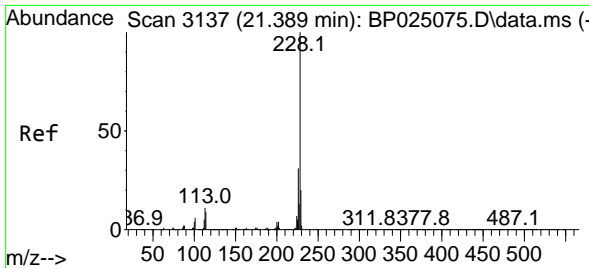


#82
 3,3'-Dichlorobenzidine
 Concen: 42.735 ng
 RT: 21.271 min Scan# 3117
 Delta R.T. 0.000 min
 Lab File: BP025075.D
 Acq: 03 Jul 2025 12:25



Tgt Ion:252 Resp: 1763991
 Ion Ratio Lower Upper
 252 100
 254 64.9 51.9 77.9
 126 10.1 8.1 12.1



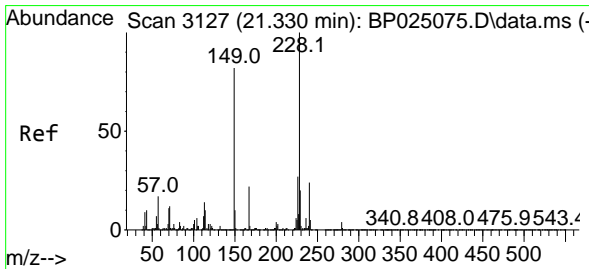
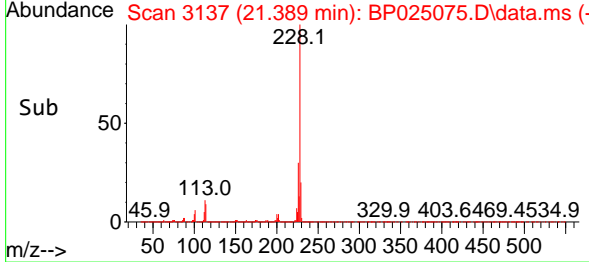
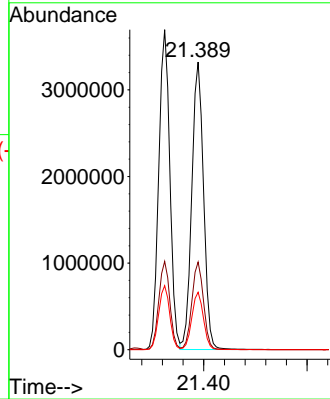
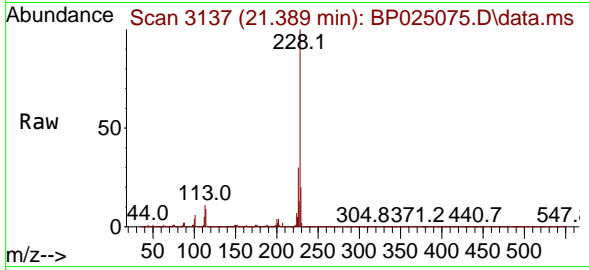


#83
 Chrysene
 Concen: 39.742 ng
 RT: 21.389 min Scan# 3137
 Delta R.T. 0.000 min
 Lab File: BP025075.D
 Acq: 03 Jul 2025 12:25

Instrument : BNA_P
 ClientSampleId : SSTDICCC040

Tgt Ion:228 Resp: 5244045

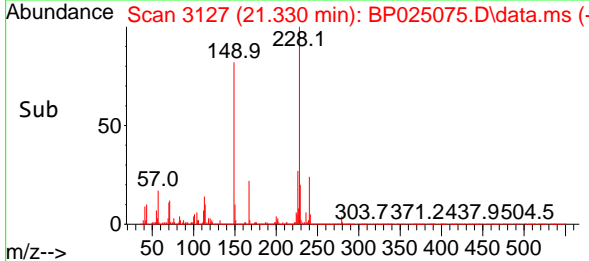
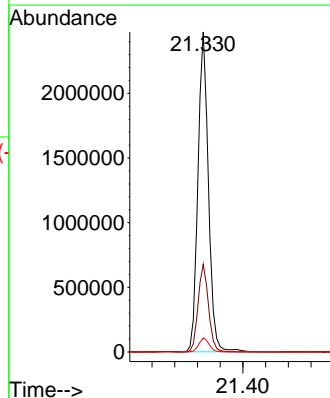
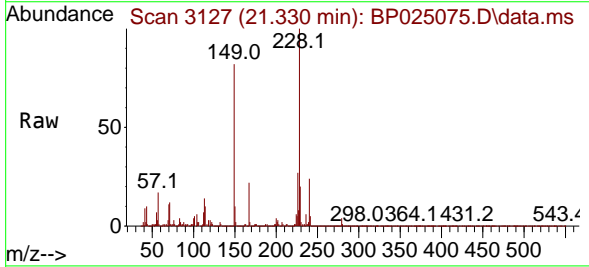
Ion	Ratio	Lower	Upper
228	100		
226	30.5	24.4	36.6
229	20.0	16.0	24.0

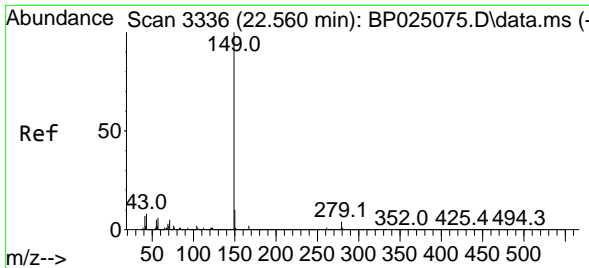


#84
 Bis(2-ethylhexyl)phthalate
 Concen: 43.232 ng
 RT: 21.330 min Scan# 3127
 Delta R.T. 0.000 min
 Lab File: BP025075.D
 Acq: 03 Jul 2025 12:25

Tgt Ion:149 Resp: 3179611

Ion	Ratio	Lower	Upper
149	100		
167	27.4	21.9	32.9
279	4.4	3.5	5.3



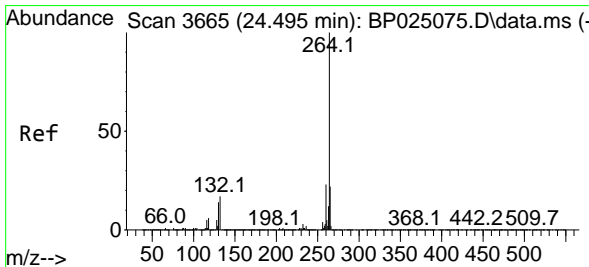
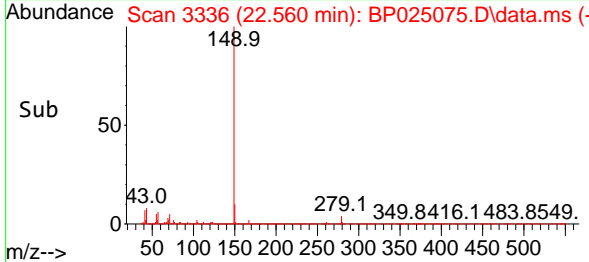
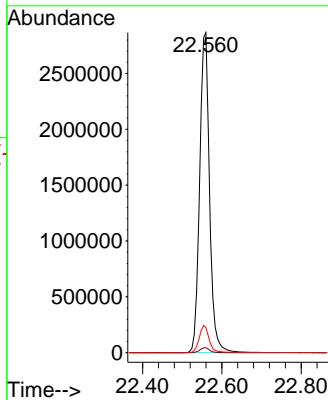
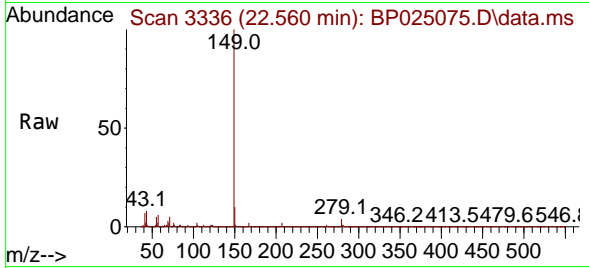


#85
 Di-n-octyl phthalate
 Concen: 38.152 ng
 RT: 22.560 min Scan# 31
 Delta R.T. -0.000 min
 Lab File: BP025075.D
 Acq: 03 Jul 2025 12:25

Instrument :
 BNA_P
 ClientSampleId :
 SSTDICC040

Tgt Ion:149 Resp: 4951836

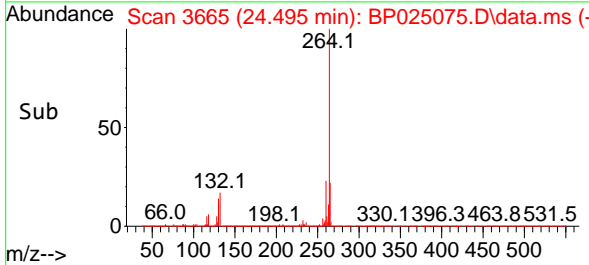
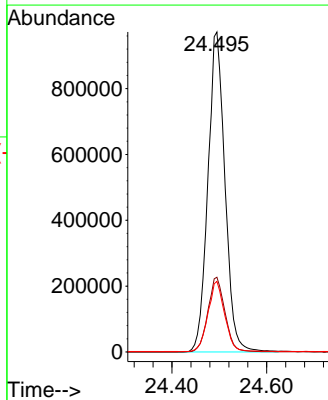
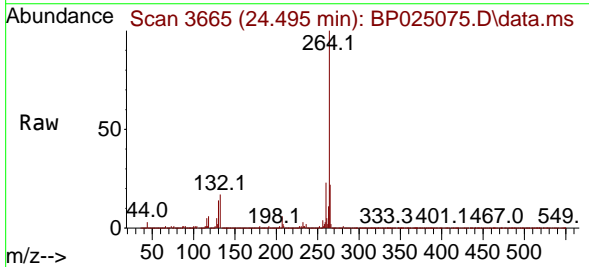
Ion	Ratio	Lower	Upper
149	100		
167	1.6	1.3	1.9
43	8.6	6.9	10.3

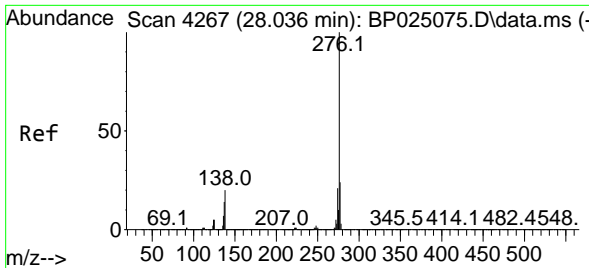


#86
 Perylene-d12
 Concen: 20.000 ng
 RT: 24.495 min Scan# 3665
 Delta R.T. 0.000 min
 Lab File: BP025075.D
 Acq: 03 Jul 2025 12:25

Tgt Ion:264 Resp: 2431657

Ion	Ratio	Lower	Upper
264	100		
260	23.3	18.6	28.0
265	22.1	17.7	26.5



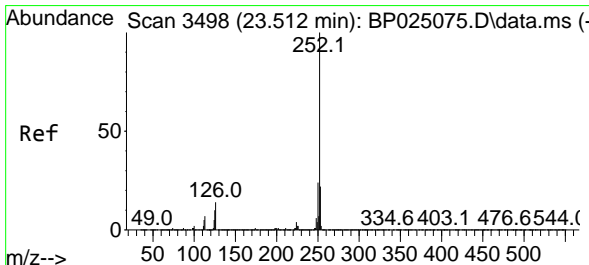
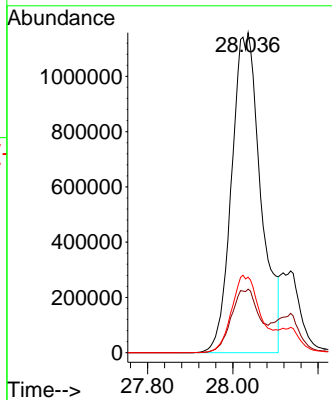
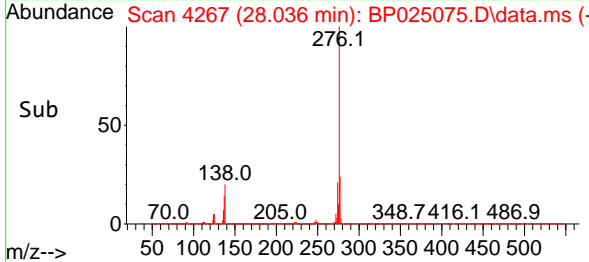
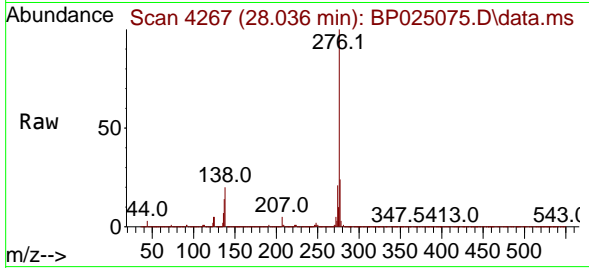


#87
 Indeno(1,2,3-cd)pyrene
 Concen: 35.475 ng
 RT: 28.036 min Scan# 41
 Delta R.T. 0.000 min
 Lab File: BP025075.D
 Acq: 03 Jul 2025 12:25

Instrument :
 BNA_P
 ClientSampleId :
 SSTDICCC040

Tgt Ion: 276 Resp: 5496761

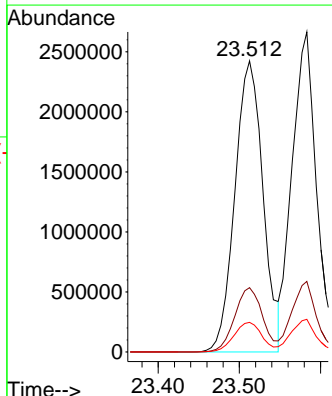
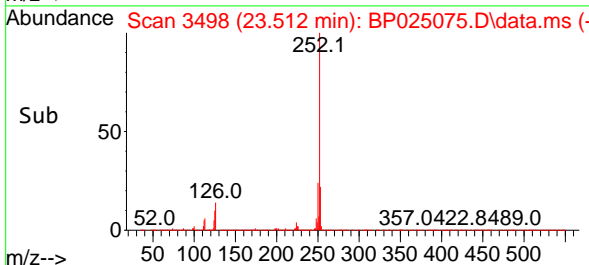
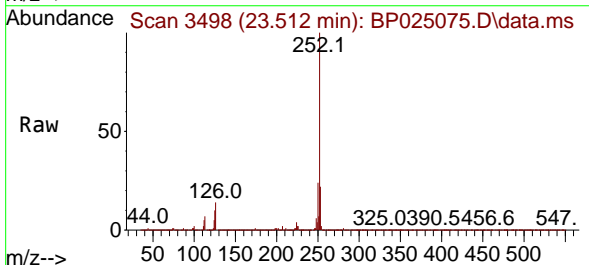
Ion	Ratio	Lower	Upper
276	100		
138	19.2	13.0	19.6
277	23.4	15.9	23.9

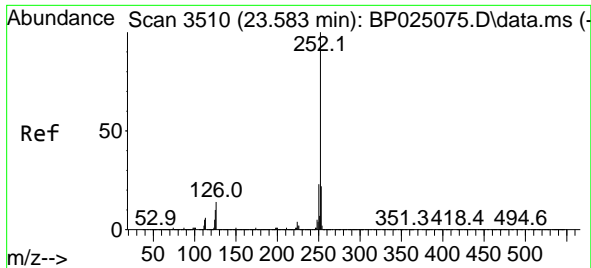


#88
 Benzo(b)fluoranthene
 Concen: 41.258 ng
 RT: 23.512 min Scan# 3498
 Delta R.T. 0.000 min
 Lab File: BP025075.D
 Acq: 03 Jul 2025 12:25

Tgt Ion: 252 Resp: 5839482

Ion	Ratio	Lower	Upper
252	100		
253	22.1	17.7	26.5
125	10.1	8.1	12.1



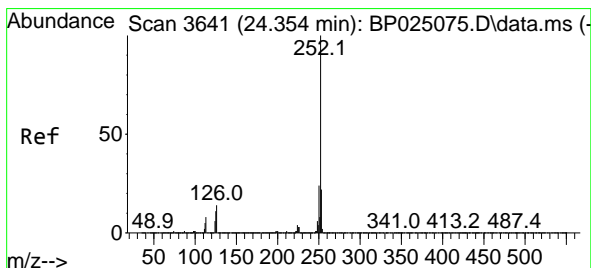
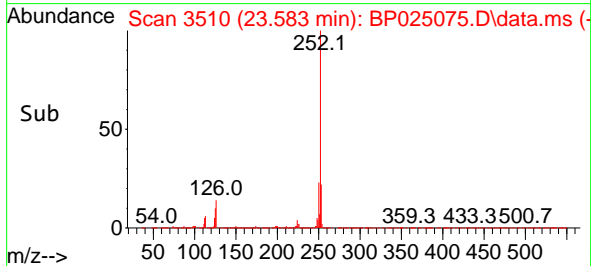
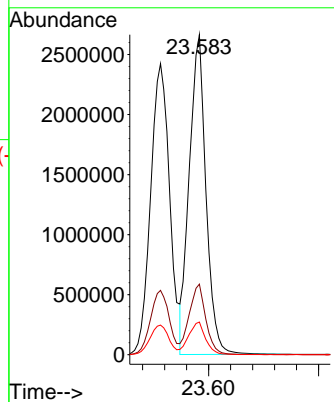
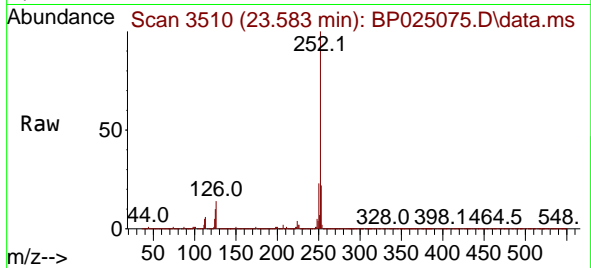


#89
 Benzo(k)fluoranthene
 Concen: 39.833 ng
 RT: 23.583 min Scan# 3510
 Delta R.T. 0.000 min
 Lab File: BP025075.D
 Acq: 03 Jul 2025 12:25

Instrument :
 BNA_P
 ClientSampleId :
 SSTDICC040

Tgt Ion:252 Resp: 5609534

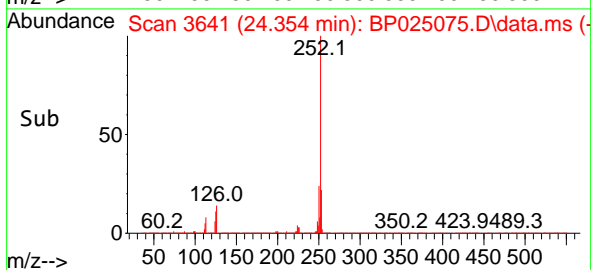
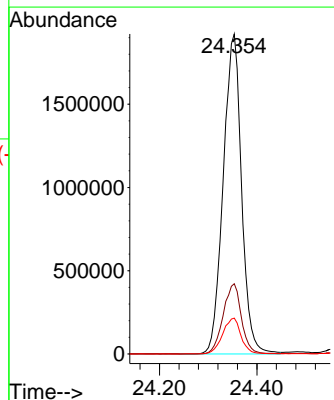
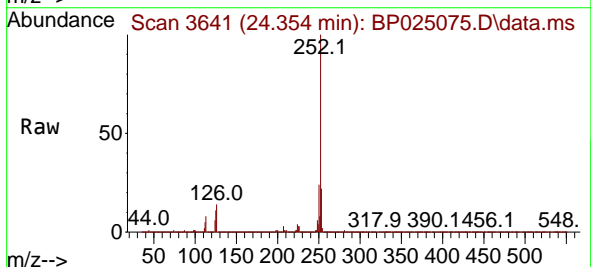
Ion	Ratio	Lower	Upper
252	100		
253	22.1	17.7	26.5
125	10.2	8.2	12.2

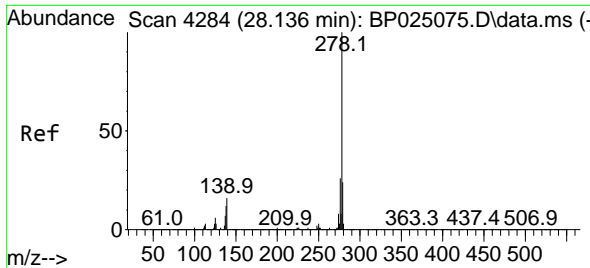


#90
 Benzo(a)pyrene
 Concen: 41.697 ng
 RT: 24.354 min Scan# 3641
 Delta R.T. 0.000 min
 Lab File: BP025075.D
 Acq: 03 Jul 2025 12:25

Tgt Ion:252 Resp: 5022829

Ion	Ratio	Lower	Upper
252	100		
253	22.0	17.6	26.4
125	11.2	9.0	13.4



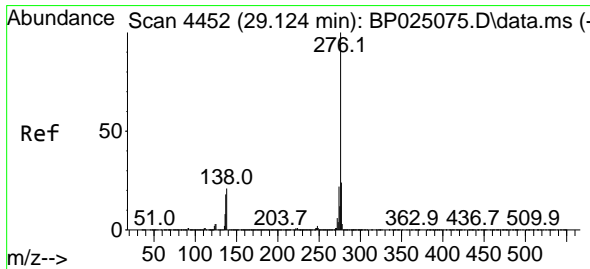
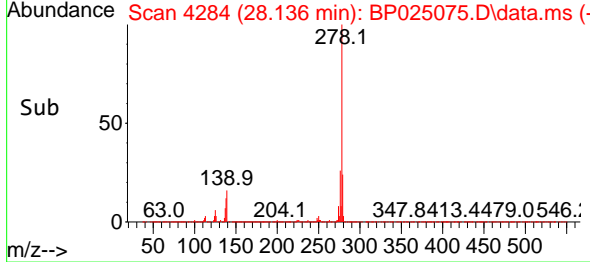
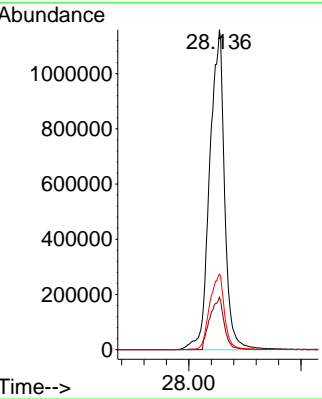
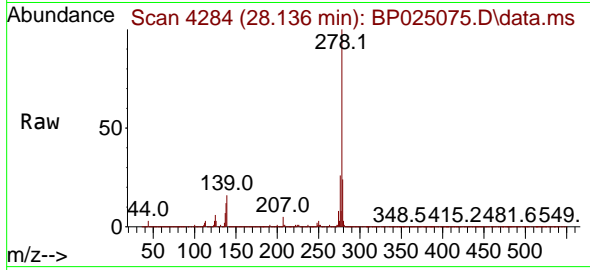


#91
 Dibenzo(a,h)anthracene
 Concen: 41.673 ng
 RT: 28.136 min Scan# 41
 Delta R.T. 0.000 min
 Lab File: BP025075.D
 Acq: 03 Jul 2025 12:25

Instrument :
 BNA_P
 ClientSampleId :
 SSTDICC040

Tgt Ion:278 Resp: 5336147

Ion	Ratio	Lower	Upper
278	100		
139	16.4	13.1	19.7
279	23.6	18.9	28.3



#92
 Benzo(g,h,i)perylene
 Concen: 41.443 ng
 RT: 29.124 min Scan# 4452
 Delta R.T. 0.000 min
 Lab File: BP025075.D
 Acq: 03 Jul 2025 12:25

Tgt Ion:276 Resp: 5482072

Ion	Ratio	Lower	Upper
276	100		
277	24.1	19.3	28.9
138	21.1	16.9	25.3

