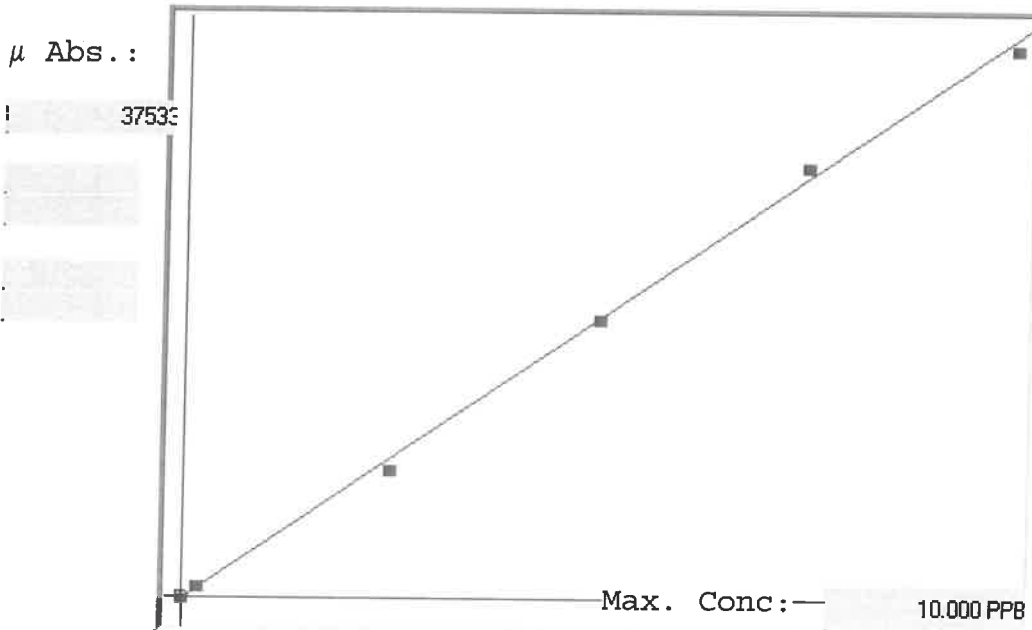


LB136435

7470A

INSTRUMENT ID: CV1

Linear



A= 0.0000e+000

B= 2.6145e-004

C= 3.3107e-002

Rho= 0.9993206

Accept=Accepted

| Std ID | Conc. | Calc. | Dev. | Mean | SD or %RSD | Rep 1 | Rep 2 | Rep 3 | Rep 4 | Rep 5 | 0/2) |
|--------|--------|-------|--------|-------|------------|-------|-------|-------|-------|-------|------|
| 0.0 | 0.000 | 0.026 | 0.026 | -27 | 0.000 | -27 | 0 | | | | 1 |
| 0.2 | 0.200 | 0.247 | 0.047 | 818 | 0.0 % | 818 | | | | | 24 |
| 2.5 | 2.500 | 2.329 | -0.171 | 8782 | 0.0 % | 8782 | | | | | 1 |
| 5.0 | 5.000 | 5.017 | 0.017 | 19062 | 0.0 % | 19062 | | | | | 2 |
| 7.5 | 7.500 | 7.735 | 0.235 | 29456 | 0.0 % | 29456 | | | | | 3 |
| 10.0 | 10.000 | 9.846 | -0.154 | 37533 | 0.0 % | 37533 | | | | | 2 |

LB136435 INSTRUMENT ID : CV1

Method: 7470A

Operator: Admin

Date of Analysis: 11 Jul 2025 10:06:29

| Sample ID | Extended ID | μ Abs | Conc | Std Conc | Method | Units | Date | Type | Type | B | C | Rho |
|-----------------|-------------|-------|---------|----------|--------|-------|----------------------|------|------|--------------|--------------|--------------|
| 0.0 - 1 | | -27 | | 0.0000 | 7470A | PPB | 11 Jul 2025 10:06:42 | S | Std | | | - |
| 0.2 - 1 | | 819 | | 0.2000 | 7470A | PPB | 11 Jul 2025 10:08:59 | S | Std | | | - |
| 2.5 - 1 | | 8782 | | 2.5000 | 7470A | PPB | 11 Jul 2025 10:11:16 | S | Std | | | - |
| 5.0 - 1 | | 19062 | | 5.0000 | 7470A | PPB | 11 Jul 2025 10:13:33 | S | Std | | | - |
| 7.5 - 1 | | 29456 | | 7.5000 | 7470A | PPB | 11 Jul 2025 10:22:26 | S | Std | | | - |
| 10.0 - 1 | | 37533 | | 10.0000 | 7470A | PPB | 11 Jul 2025 10:27:37 | S | Std | | | - |
| ICV24 - 1 | ICV24 | 14645 | 3.8621 | | 7470A | PPB | 11 Jul 2025 10:34:53 | U | SMPL | 2.61455e-004 | 3.31067e-002 | 9.99321e-001 |
| ICB24 - 1 | ICB24 | -241 | -0.0299 | | 7470A | PPB | 11 Jul 2025 10:37:07 | U | SMPL | 2.61455e-004 | 3.31067e-002 | 9.99321e-001 |
| CCV78 - 1 | CCV78 | 17925 | 4.7197 | | 7470A | PPB | 11 Jul 2025 10:39:25 | U | SMPL | 2.61455e-004 | 3.31067e-002 | 9.99321e-001 |
| CCB78 - 1 | CCB78 | -226 | -0.0260 | | 7470A | PPB | 11 Jul 2025 10:41:42 | U | SMPL | 2.61455e-004 | 3.31067e-002 | 9.99321e-001 |
| CRA - 1 | CRA | 725 | 0.2237 | | 7470A | PPB | 11 Jul 2025 10:43:59 | U | SMPL | 2.61455e-004 | 3.31067e-002 | 9.99321e-001 |
| HighStd - 1 | HighStd | 37174 | 9.7524 | | 7470A | PPB | 11 Jul 2025 10:46:15 | U | SMPL | 2.61455e-004 | 3.31067e-002 | 9.99321e-001 |
| ChkStd - 1 | ChkStd | 26489 | 7.4617 | | 7470A | PPB | 11 Jul 2025 10:48:33 | U | SMPL | 2.61455e-004 | 3.31067e-002 | 9.99321e-001 |
| PB168814BL - 1 | PBW | -629 | -0.1313 | | 7470A | PPB | 11 Jul 2025 10:50:57 | U | SMPL | 2.61455e-004 | 3.31067e-002 | 9.99321e-001 |
| PB168814BS - 1 | LCSW | 17845 | 4.6988 | | 7470A | PPB | 11 Jul 2025 10:53:19 | U | SMPL | 2.61455e-004 | 3.31067e-002 | 9.99321e-001 |
| Q2489-01 - 1 | G4(0-6) | -304 | -0.0464 | | 7470A | PPB | 11 Jul 2025 10:55:35 | U | SMPL | 2.61455e-004 | 3.31067e-002 | 9.99321e-001 |
| Q2489-01DUP - 1 | G4(0-6)DUP | -17 | 0.0287 | | 7470A | PPB | 11 Jul 2025 10:57:54 | U | SMPL | 2.61455e-004 | 3.31067e-002 | 9.99321e-001 |
| Q2489-01MS - 1 | G4(0-6)MS | 15955 | 4.2046 | | 7470A | PPB | 11 Jul 2025 11:00:11 | U | SMPL | 2.61455e-004 | 3.31067e-002 | 9.99321e-001 |
| Q2489-01MSD - 1 | G4(0-6)MSD | 16275 | 4.2883 | | 7470A | PPB | 11 Jul 2025 11:02:28 | U | SMPL | 2.61455e-004 | 3.31067e-002 | 9.99321e-001 |
| Q2489-02 - 1 | G4(6-12) | 11426 | 3.0205 | | 7470A | PPB | 11 Jul 2025 11:04:46 | U | SMPL | 2.61455e-004 | 3.31067e-002 | 9.99321e-001 |
| CCV79 - 1 | CCV79 | 18260 | 4.8073 | | 7470A | PPB | 11 Jul 2025 11:07:05 | U | SMPL | 2.61455e-004 | 3.31067e-002 | 9.99321e-001 |
| CCB79 - 1 | CCB79 | -317 | -0.0498 | | 7470A | PPB | 11 Jul 2025 11:09:39 | U | SMPL | 2.61455e-004 | 3.31067e-002 | 9.99321e-001 |
| Q2489-03 - 1 | G3(0-6) | -122 | 0.0012 | | 7470A | PPB | 11 Jul 2025 11:11:56 | U | SMPL | 2.61455e-004 | 3.31067e-002 | 9.99321e-001 |
| Q2489-04 - 1 | G3(6-12) | 1394 | 0.3976 | | 7470A | PPB | 11 Jul 2025 11:14:13 | U | SMPL | 2.61455e-004 | 3.31067e-002 | 9.99321e-001 |
| Q2489-05 - 1 | G2(0-6) | -367 | -0.0628 | | 7470A | PPB | 11 Jul 2025 11:16:29 | U | SMPL | 2.61455e-004 | 3.31067e-002 | 9.99321e-001 |
| Q2489-06 - 1 | G2(6-12) | -76 | 0.0132 | | 7470A | PPB | 11 Jul 2025 11:18:47 | U | SMPL | 2.61455e-004 | 3.31067e-002 | 9.99321e-001 |
| Q2489-07 - 1 | G1(0-6) | 32 | 0.0415 | | 7470A | PPB | 11 Jul 2025 11:21:03 | U | SMPL | 2.61455e-004 | 3.31067e-002 | 9.99321e-001 |
| Q2489-08 - 1 | G1(6-12) | 87 | 0.0556 | | 7470A | PPB | 11 Jul 2025 11:23:19 | U | SMPL | 2.61455e-004 | 3.31067e-002 | 9.99321e-001 |
| PB168815BL - 1 | PBW | -22 | 0.0274 | | 7470A | PPB | 11 Jul 2025 11:25:36 | U | SMPL | 2.61455e-004 | 3.31067e-002 | 9.99321e-001 |
| PB168815BS - 1 | LCSW | 15310 | 4.0360 | | 7470A | PPB | 11 Jul 2025 11:28:50 | U | SMPL | 2.61455e-004 | 3.31067e-002 | 9.99321e-001 |
| Q2517-04 - 1 | TP-14 | -272 | -0.0380 | | 7470A | PPB | 11 Jul 2025 11:31:07 | U | SMPL | 2.61455e-004 | 3.31067e-002 | 9.99321e-001 |
| Q2517-04DUP - 1 | TP-14DUP | 9 | 0.0355 | | 7470A | PPB | 11 Jul 2025 11:33:19 | U | SMPL | 2.61455e-004 | 3.31067e-002 | 9.99321e-001 |
| CCV80 - 1 | CCV80 | 20342 | 5.3516 | | 7470A | PPB | 11 Jul 2025 11:35:35 | U | SMPL | 2.61455e-004 | 3.31067e-002 | 9.99321e-001 |
| CCB80 - 1 | CCB80 | -69 | 0.0151 | | 7470A | PPB | 11 Jul 2025 11:37:51 | U | SMPL | 2.61455e-004 | 3.31067e-002 | 9.99321e-001 |
| Q2517-04MS - 1 | TP-14MS | 16793 | 4.4237 | | 7470A | PPB | 11 Jul 2025 11:40:07 | U | SMPL | 2.61455e-004 | 3.31067e-002 | 9.99321e-001 |
| Q2517-04MSD - 1 | TP-14MSD | 17949 | 4.7260 | | 7470A | PPB | 11 Jul 2025 11:42:23 | U | SMPL | 2.61455e-004 | 3.31067e-002 | 9.99321e-001 |
| Q2519-04 - 1 | TP-15 | -115 | 0.0030 | | 7470A | PPB | 11 Jul 2025 11:44:39 | U | SMPL | 2.61455e-004 | 3.31067e-002 | 9.99321e-001 |
| Q2523-05 - 1 | MOO-25-0190 | 53 | 0.0470 | | 7470A | PPB | 11 Jul 2025 11:46:55 | U | SMPL | 2.61455e-004 | 3.31067e-002 | 9.99321e-001 |
| Q2526-05 - 1 | LAW-25-0101 | -49 | 0.0203 | | 7470A | PPB | 11 Jul 2025 11:49:11 | U | SMPL | 2.61455e-004 | 3.31067e-002 | 9.99321e-001 |
| Q2526-06 - 1 | LAW-25-0102 | 16 | 0.0373 | | 7470A | PPB | 11 Jul 2025 11:51:27 | U | SMPL | 2.61455e-004 | 3.31067e-002 | 9.99321e-001 |
| CCV81 - 1 | CCV81 | 19616 | 5.1616 | | 7470A | PPB | 11 Jul 2025 11:53:43 | U | SMPL | 2.61455e-004 | 3.31067e-002 | 9.99321e-001 |
| CCB81 - 1 | CCB81 | -189 | -0.0163 | | 7470A | PPB | 11 Jul 2025 11:55:59 | U | SMPL | 2.61455e-004 | 3.31067e-002 | 9.99321e-001 |
| PB168755TB - 1 | PB168755TB | -41 | 0.0224 | | 7470A | PPB | 11 Jul 2025 11:58:15 | U | SMPL | 2.61455e-004 | 3.31067e-002 | 9.99321e-001 |
| PB168761TB - 1 | PB168761TB | -42 | 0.0221 | | 7470A | PPB | 11 Jul 2025 12:00:31 | U | SMPL | 2.61455e-004 | 3.31067e-002 | 9.99321e-001 |
| Q2489-01LX5 - 1 | | 98 | 0.0587 | | 7470A | PPB | 11 Jul 2025 12:02:47 | U | SMPL | 2.61455e-004 | 3.31067e-002 | 9.99321e-001 |
| Q2489-01A - 1 | | 14967 | 3.9463 | | 7470A | PPB | 11 Jul 2025 12:05:03 | U | SMPL | 2.61455e-004 | 3.31067e-002 | 9.99321e-001 |
| Q2517-04LX5 - 1 | | -151 | -0.0064 | | 7470A | PPB | 11 Jul 2025 12:07:19 | U | SMPL | 2.61455e-004 | 3.31067e-002 | 9.99321e-001 |
| Q2517-04A - 1 | | 17358 | 4.5714 | | 7470A | PPB | 11 Jul 2025 12:09:35 | U | SMPL | 2.61455e-004 | 3.31067e-002 | 9.99321e-001 |
| CCV82 - 1 | CCV82 | 18045 | 4.7511 | | 7470A | PPB | 11 Jul 2025 12:11:51 | U | SMPL | 2.61455e-004 | 3.31067e-002 | 9.99321e-001 |
| CCB82 - 1 | CCB82 | -30 | 0.0253 | | 7470A | PPB | 11 Jul 2025 12:14:07 | U | SMPL | 2.61455e-004 | 3.31067e-002 | 9.99321e-001 |