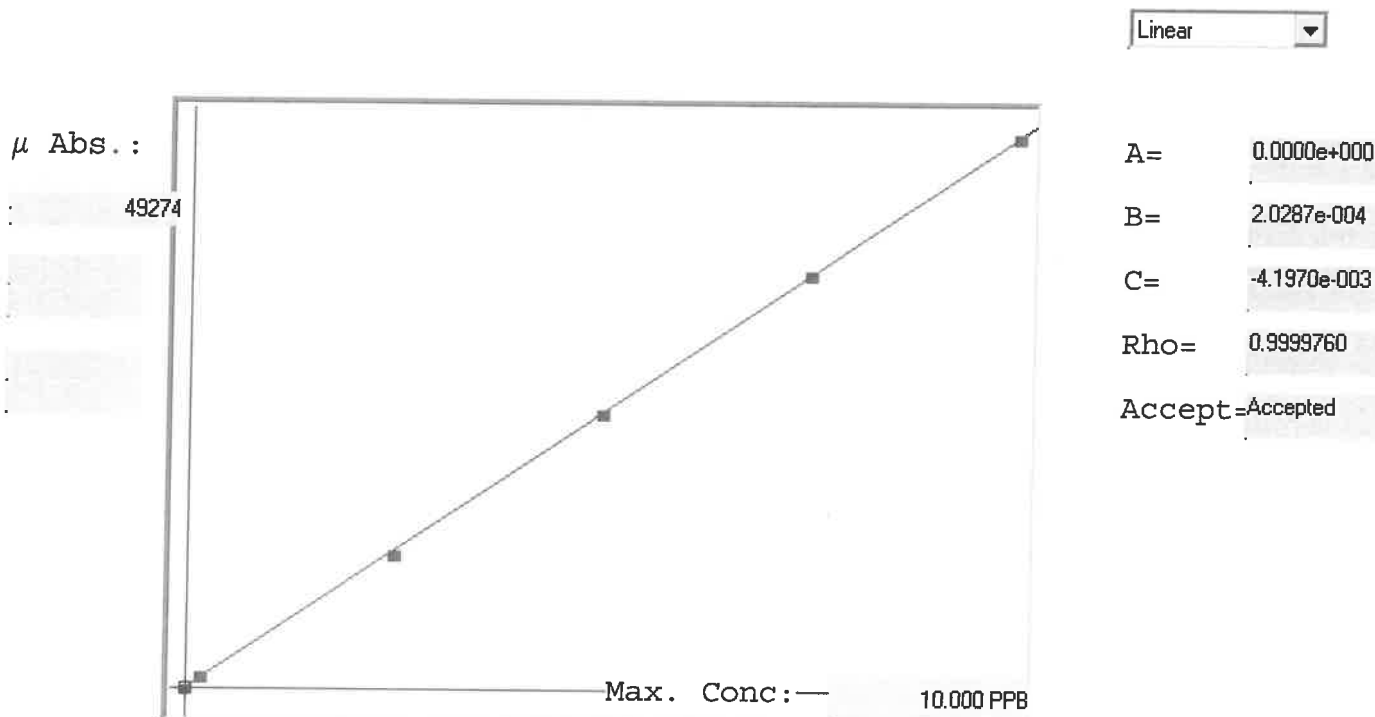


LB136417

7471B

INSTRUMENT ID: CV1



Std ID	Conc.	Calc.	Dev.	Mean	SD or %RSD	Rep 1	Rep 2	Rep 3	Rep 4	Rep 5	%D
0.0	0.000	0.014	0.014	92	0.000	92					
0.2	0.200	0.218	0.018	1096	0.0 %	1096					
2.5	2.500	2.450	-0.050	12096	0.0 %	12096					
5.0	5.000	4.998	-0.002	24656	0.0 %	24656					
7.5	7.500	7.528	0.028	37129	0.0 %	37129					
10.0	10.000	9.992	-0.008	49274	0.0 %	49274					

9
-2
0
0
6

LB136417 INSTRUMENT ID : CV1

Method: 7471B

Operator: Admin

Date of Analysis: 10 Jul 2025 08:22:21

Type	Sample ID	Extended ID	Conc.	μ Abs.	Units	Std Conc Method	Date
S	0.0 - 1	50	-	92	PPB	0.00007471B	10 Jul 2025 09:02:15
S	0.2 - 1	50.2	-	1096	PPB	0.20007471B	10 Jul 2025 09:04:32
S	2.5 - 1	52.5	-	12096	PPB	2.50007471B	10 Jul 2025 09:06:50
S	5.0 - 1	55	-	24656	PPB	5.00007471B	10 Jul 2025 09:09:07
S	7.5 - 1	57.5	-	37129	PPB	7.50007471B	10 Jul 2025 09:14:11
S	10.0 - 1	510	-	49274	PPB	10.00007471B	10 Jul 2025 09:19:25
U	ICV23 - 1	ICV23	3.7203	18359	PPB	-7471B	10 Jul 2025 09:22:37
U	ICB23 - 1	ICB23	-0.0586	-268	PPB	-7471B	10 Jul 2025 09:24:55
U	CCV74 - 1	CCV74	5.3546	26415	PPB	-7471B	10 Jul 2025 09:27:17
U	CCB74 - 1	CCB74	0.0680	356	PPB	-7471B	10 Jul 2025 09:32:34
U	CRA - 1	CRA	0.2214	1112	PPB	-7471B	10 Jul 2025 09:34:51
U	HighStd - 1	HighStd	10.0069	49348	PPB	-7471B	10 Jul 2025 09:37:11
U	ChkStd - 1	ChkStd	7.1313	35173	PPB	-7471B	10 Jul 2025 09:39:34
U	PB168776BL - 1	PBS	-0.0833	-390	PPB	-7471B	10 Jul 2025 09:42:14
U	PB168776BS - 1	LCSS	3.6411	17969	PPB	-7471B	10 Jul 2025 09:44:45
U	Q2517-01 - 1	TP-14	0.3768	1878	PPB	-7471B	10 Jul 2025 09:47:02
U	Q2517-01DUP - 1	TP-14DUP	0.3764	1876	PPB	-7471B	10 Jul 2025 09:49:18
U	Q2517-01MS - 1	TP-14MS	4.3080	21256	PPB	-7471B	10 Jul 2025 09:51:48
U	Q2517-01MSD - 1	TP-14MSD	4.3581	21503	PPB	-7471B	10 Jul 2025 09:54:08
U	Q2519-01 - 1	TP-15	0.1171	598	PPB	-7471B	10 Jul 2025 09:56:41
U	CCV75 - 1	CCV75	5.0876	25099	PPB	-7471B	10 Jul 2025 09:59:02
U	CCB75 - 1	CCB75	-0.0275	-115	PPB	-7471B	10 Jul 2025 10:04:00
U	Q2527-01 - 1	AR520-0015	0.8000	3964	PPB	-7471B	10 Jul 2025 10:06:17
U	Q2529-01 - 1	TP-91	0.5529	2746	PPB	-7471B	10 Jul 2025 10:08:32
U	Q2529-02 - 1	TP-80	0.7992	3960	PPB	-7471B	10 Jul 2025 10:10:48
U	Q2529-03 - 1	TP-79	0.8201	4063	PPB	-7471B	10 Jul 2025 10:13:05
U	Q2529-04 - 1	TP-95	1.3544	6697	PPB	-7471B	10 Jul 2025 10:15:24
U	Q2529-05 - 1	TP-98	1.0631	5261	PPB	-7471B	10 Jul 2025 10:17:43
U	Q2529-06 - 1	TP-102	0.0903	466	PPB	-7471B	10 Jul 2025 10:20:02
U	Q2529-07 - 1	TP-101	0.3981	1983	PPB	-7471B	10 Jul 2025 10:22:22
U	Q2529-08 - 1	TP-89	0.5437	2701	PPB	-7471B	10 Jul 2025 10:24:39
U	Q2529-09 - 1	TP-33	0.1646	832	PPB	-7471B	10 Jul 2025 10:26:56
U	CCV76 - 1	CCV76	5.1858	25583	PPB	-7471B	10 Jul 2025 10:29:13
U	CCB76 - 1	CCB76	-0.0549	-250	PPB	-7471B	10 Jul 2025 10:31:28
U	Q2529-10 - 1	TP-30	0.2900	1450	PPB	-7471B	10 Jul 2025 10:33:50
U	Q2517-01LX5 - 1		-0.0332	-143	PPB	-7471B	10 Jul 2025 10:36:06
U	Q2517-01A - 1		4.3402	21415	PPB	-7471B	10 Jul 2025 10:38:21
U	CCV77 - 1	CCV77	5.2545	25922	PPB	-7471B	10 Jul 2025 10:40:37
U	CCB77 - 1	CCB77	-0.0521	-236	PPB	-7471B	10 Jul 2025 10:42:56