

Data Path : Z:\svoasrv\HPCHEM1\BNA_P\Data\BP070325\
 Data File : BP025073.D
 Acq On : 03 Jul 2025 11:02
 Operator : CG/JU
 Sample : SSTDICC010
 Misc :
 ALS Vial : 4 Sample Multiplier: 1

Instrument :
 BNA_P
 ClientSampleId :
 SSTDICC010

Quant Time: Jul 03 15:51:01 2025
 Quant Method : Z:\svoasrv\HPCHEM1\BNA_P\Methods\8270E-BP070325.M
 Quant Title : ASP BNA STANDARDS FOR 5 POINT CALIBRATION
 QLast Update : Thu Jul 03 15:38:19 2025
 Response via : Initial Calibration

Compound	R.T.	QIon	Response	Conc	Units	Dev(Min)	
Internal Standards							
1) 1,4-Dichlorobenzene-d4	7.449	152	342992	20.000	ng	0.00	
21) Naphthalene-d8	10.196	136	1376560	20.000	ng	0.01	
39) Acenaphthene-d10	14.096	164	924609	20.000	ng	0.00	
64) Phenanthrene-d10	16.913	188	1970410	20.000	ng	0.00	
76) Chrysene-d12	21.342	240	2172955	20.000	ng	0.00	
86) Perylene-d12	24.489	264	2220570	20.000	ng	0.00	
System Monitoring Compounds							
5) 2-Fluorophenol	5.102	112	376746	19.462	ng	0.00	
7) Phenol-d6	6.631	99	482699	19.108	ng	0.00	
23) Nitrobenzene-d5	8.566	82	381978	18.454	ng	0.00	
42) 2,4,6-Tribromophenol	15.619	330	198235	18.149	ng	0.00	
45) 2-Fluorobiphenyl	12.701	172	1211432	20.297	ng	0.00	
79) Terphenyl-d14	19.672	244	1997838	20.207	ng	0.00	
Target Compounds							
2) 1,4-Dioxane	3.126	88	77575	10.306	ng		98
3) Pyridine	3.490	79	197662	9.598	ng		97
4) n-Nitrosodimethylamine	3.408	42	85827	9.836	ng	#	92
6) Aniline	6.790	93	227023	9.619	ng		98
8) 2-Chlorophenol	7.014	128	206980	9.556	ng		96
9) Benzaldehyde	6.602	77	154921	11.743	ng		98
10) Phenol	6.655	94	250593	9.763	ng		99
11) bis(2-Chloroethyl)ether	6.890	93	195263	9.885	ng		98
12) 1,3-Dichlorobenzene	7.343	146	245857	10.143	ng		98
13) 1,4-Dichlorobenzene	7.478	146	245523	10.004	ng		98
14) 1,2-Dichlorobenzene	7.790	146	237961	10.079	ng		98
15) Benzyl Alcohol	7.678	79	152168	9.025	ng		99
16) 2,2'-oxybis(1-Chloropr...	7.978	45	260708	10.150	ng		97
17) 2-Methylphenol	7.878	107	155778	9.422	ng		98
18) Hexachloroethane	8.502	117	75576	9.453	ng		96
19) n-Nitroso-di-n-propyla...	8.237	70	146424	9.774	ng		97
20) 3+4-Methylphenols	8.196	107	213641	9.225	ng		97
22) Acetophenone	8.243	105	330725	10.159	ng		98
24) Nitrobenzene	8.608	77	201551	9.560	ng		99
25) Isophorone	9.137	82	367740	9.507	ng		100
26) 2-Nitrophenol	9.313	139	63769	9.106	ng		92
27) 2,4-Dimethylphenol	9.390	122	134296	9.307	ng		97
28) bis(2-Chloroethoxy)met...	9.625	93	255336	9.722	ng		99
29) 2,4-Dichlorophenol	9.843	162	181263	9.059	ng		99
30) 1,2,4-Trichlorobenzene	10.066	180	219650	9.913	ng		99
31) Naphthalene	10.243	128	709141	10.005	ng		99
32) Benzoic acid	9.455	122	79225	10.455	ng		95
33) 4-Chloroaniline	10.343	127	254489	9.621	ng		98
34) Hexachlorobutadiene	10.549	225	124190	9.767	ng		99
35) Caprolactam	11.084	113	59547	8.700	ng		94
36) 4-Chloro-3-methylphenol	11.478	107	192224	9.193	ng		99
37) 2-Methylnaphthalene	11.872	142	489608	9.790	ng		99
38) 1-Methylnaphthalene	12.084	142	484403	9.931	ng		100
40) 1,2,4,5-Tetrachloroben...	12.249	216	253871	9.554	ng		99
41) Hexachlorocyclopentadiene	12.243	237	55283	7.965	ng		96
43) 2,4,6-Trichlorophenol	12.490	196	136269	8.469	ng		99

Data Path : Z:\svoasrv\HPCHEM1\BNA_P\Data\BP070325\
 Data File : BP025073.D
 Acq On : 03 Jul 2025 11:02
 Operator : CG/JU
 Sample : SSTDICC010
 Misc :
 ALS Vial : 4 Sample Multiplier: 1

Instrument :
 BNA_P
 ClientSampleId :
 SSTDICC010

Quant Time: Jul 03 15:51:01 2025
 Quant Method : Z:\svoasrv\HPCHEM1\BNA_P\Methods\8270E-BP070325.M
 Quant Title : ASP BNA STANDARDS FOR 5 POINT CALIBRATION
 QLast Update : Thu Jul 03 15:38:19 2025
 Response via : Initial Calibration

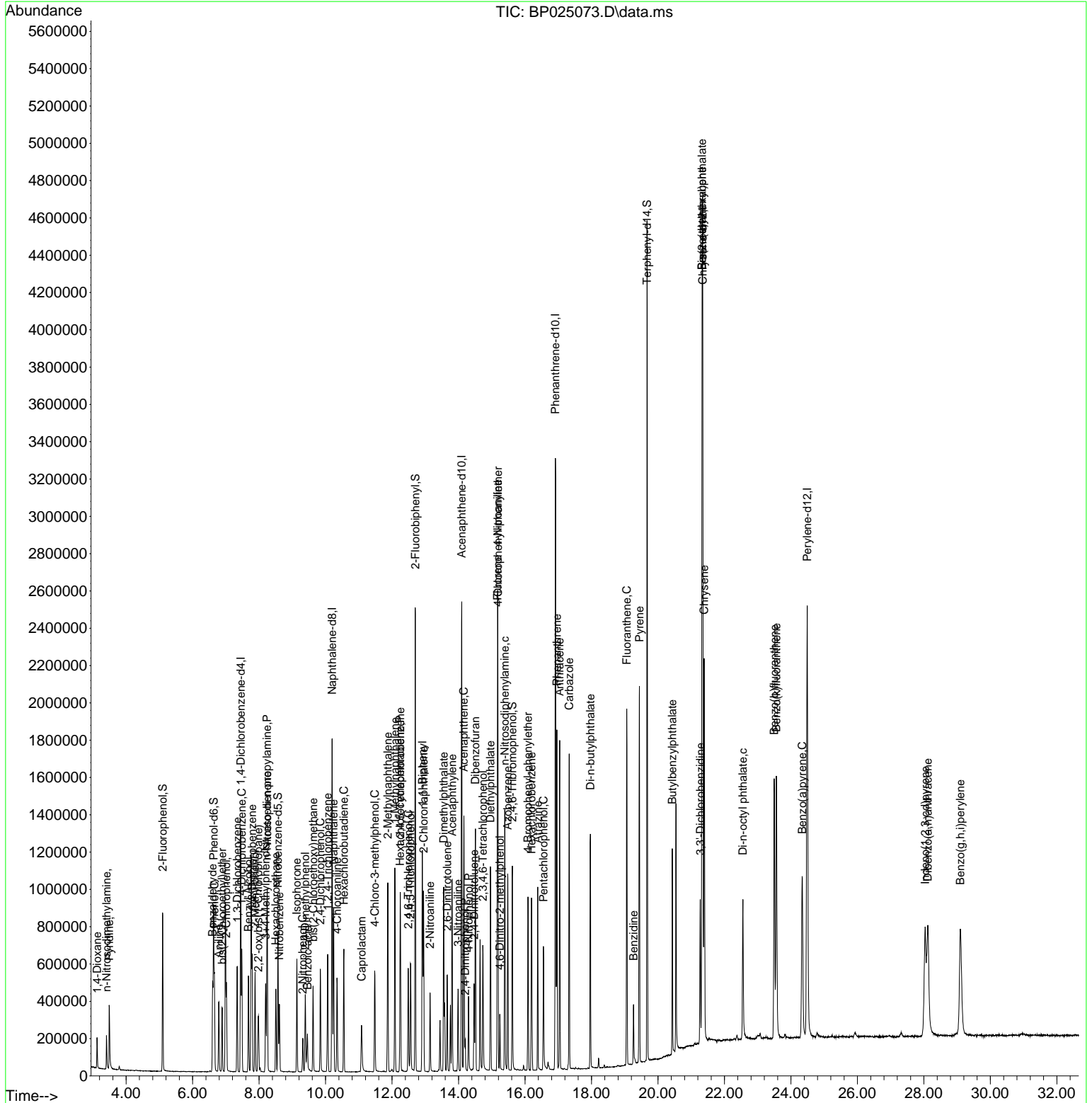
Compound	R.T.	QIon	Response	Conc	Units	Dev(Min)
44) 2,4,5-Trichlorophenol	12.554	196	161200	8.840	ng	98
46) 1,1'-Biphenyl	12.913	154	663919	9.869	ng	99
47) 2-Chloronaphthalene	12.949	162	503580	9.959	ng	98
48) 2-Nitroaniline	13.143	65	85669	9.283	ng	97
49) Acenaphthylene	13.807	152	750027	9.692	ng	99
50) Dimethylphthalate	13.554	163	636102	9.828	ng	99
51) 2,6-Dinitrotoluene	13.660	165	110177	8.728	ng	95
52) Acenaphthene	14.160	154	512792	10.281	ng	98
53) 3-Nitroaniline	13.990	138	114723	8.481	ng #	95
54) 2,4-Dinitrophenol	14.201	184	35399	10.737	ng	96
55) Dibenzofuran	14.507	168	838464	10.186	ng	100
56) 4-Nitrophenol	14.301	139	98038	7.853	ng	92
57) 2,4-Dinitrotoluene	14.466	165	131885	9.365	ng	98
58) Fluorene	15.172	166	639683	10.047	ng	99
59) 2,3,4,6-Tetrachlorophenol	14.731	232	146800	8.890	ng	97
60) Diethylphthalate	14.960	149	636288	9.788	ng	98
61) 4-Chlorophenyl-phenyle...	15.184	204	317737	10.084	ng	98
62) 4-Nitroaniline	15.178	138	123493	8.706	ng	93
63) Azobenzene	15.478	77	589360	10.181	ng	97
65) 4,6-Dinitro-2-methylph...	15.243	198	52978	10.800	ng	87
66) n-Nitrosodiphenylamine	15.390	169	539820	9.573	ng	99
67) 4-Bromophenyl-phenylether	16.090	248	186736	9.256	ng	93
68) Hexachlorobenzene	16.195	284	236838	9.604	ng	98
69) Atrazine	16.384	200	164479	9.954	ng	100
70) Pentachlorophenol	16.554	266	129459	7.774	ng	98
71) Phenanthrene	16.960	178	1068228	10.146	ng	99
72) Anthracene	17.042	178	980773	9.710	ng	99
73) Carbazole	17.331	167	979377	9.917	ng	99
74) Di-n-butylphthalate	17.966	149	979540	8.907	ng	100
75) Fluoranthene	19.060	202	1203752	9.781	ng	99
77) Benzidine	19.266	184	192008	5.003	ng	99
78) Pyrene	19.442	202	1286495	9.559	ng	99
80) Butylbenzylphthalate	20.430	149	300028	9.024	ng	95
81) Benzo(a)anthracene	21.325	228	1276106	9.691	ng	99
82) 3,3'-Dichlorobenzidine	21.272	252	270931	6.834	ng	99
83) Chrysene	21.389	228	1246003	9.832	ng	99
84) Bis(2-ethylhexyl)phtha...	21.325	149	564998	7.999	ng	97
85) Di-n-octyl phthalate	22.554	149	662011	10.561	ng	97
87) Indeno(1,2,3-cd)pyrene	28.042	276	1222863	8.642	ng	98
88) Benzo(b)fluoranthene	23.495	252	1180548	9.134	ng	100
89) Benzo(k)fluoranthene	23.560	252	1252989	9.743	ng	99
90) Benzo(a)pyrene	24.342	252	963455	8.758	ng	99
91) Dibenzo(a,h)anthracene	28.118	278	1022797	8.747	ng	100
92) Benzo(g,h,i)perylene	29.095	276	1073371	8.886	ng	99

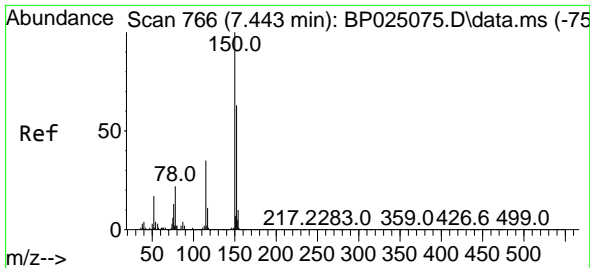
(#) = qualifier out of range (m) = manual integration (+) = signals summed

Data Path : Z:\svoasrv\HPCHEM1\BNA_P\Data\BP070325\
 Data File : BP025073.D
 Acq On : 03 Jul 2025 11:02
 Operator : CG/JU
 Sample : SSTDICC010
 Misc :
 ALS Vial : 4 Sample Multiplier: 1

Instrument :
 BNA_P
 ClientSampleId :
 SSTDICC010

Quant Time: Jul 03 15:51:01 2025
 Quant Method : Z:\svoasrv\HPCHEM1\BNA_P\Methods\8270E-BP070325.M
 Quant Title : ASP BNA STANDARDS FOR 5 POINT CALIBRATION
 QLast Update : Thu Jul 03 15:38:19 2025
 Response via : Initial Calibration

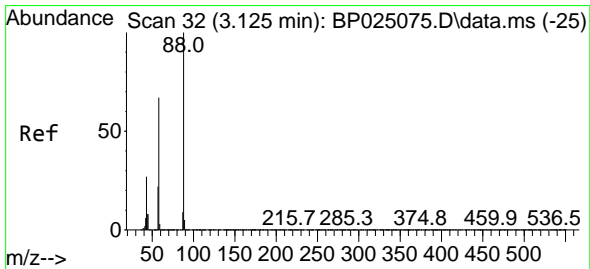
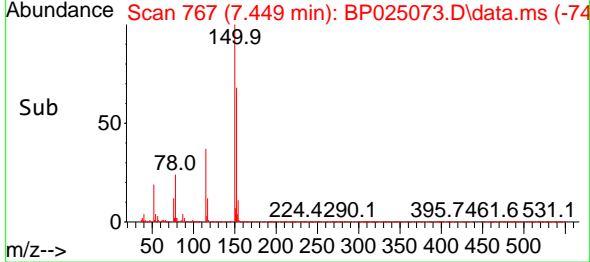
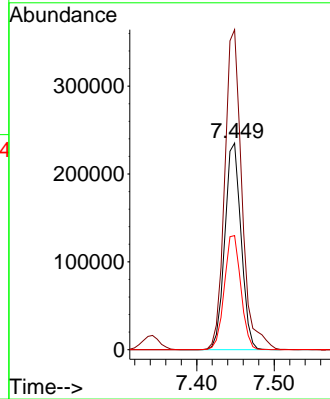
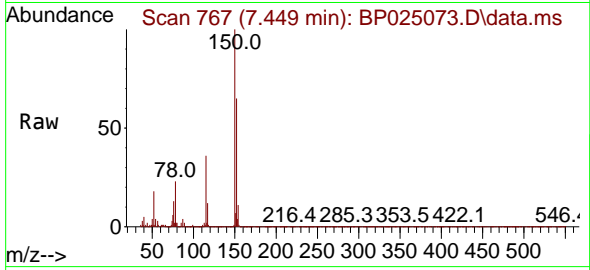




#1
 1,4-Dichlorobenzene-d4
 Concen: 20.000 ng
 RT: 7.449 min Scan# 70
 Delta R.T. 0.006 min
 Lab File: BP025073.D
 Acq: 03 Jul 2025 11:02

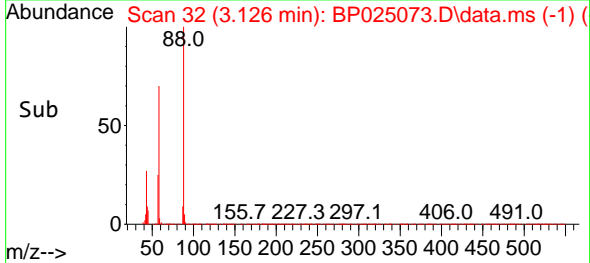
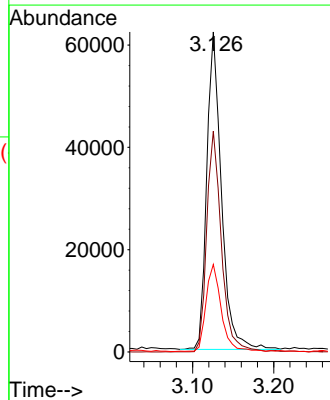
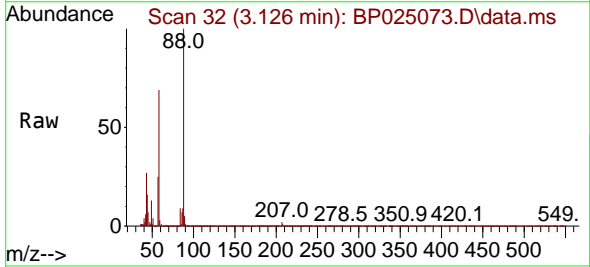
Instrument :
 BNA_P
 ClientSampleId :
 SSTDICC010

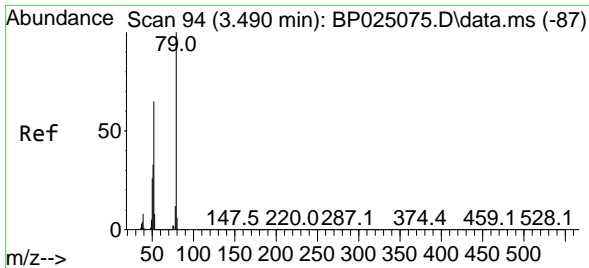
Tgt Ion	Resp	Lower	Upper
152	100		
150	154.9	126.1	189.1
115	55.2	44.3	66.5



#2
 1,4-Dioxane
 Concen: 10.306 ng
 RT: 3.126 min Scan# 32
 Delta R.T. 0.000 min
 Lab File: BP025073.D
 Acq: 03 Jul 2025 11:02

Tgt Ion	Resp	Lower	Upper
88	100		
58	70.0	55.0	82.4
43	28.7	21.9	32.9



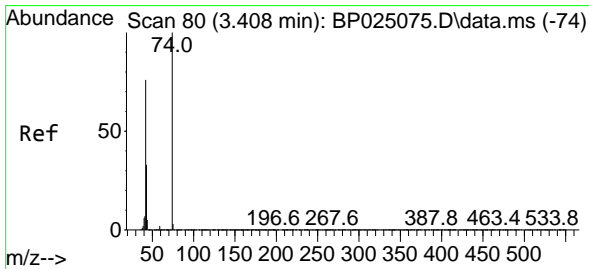
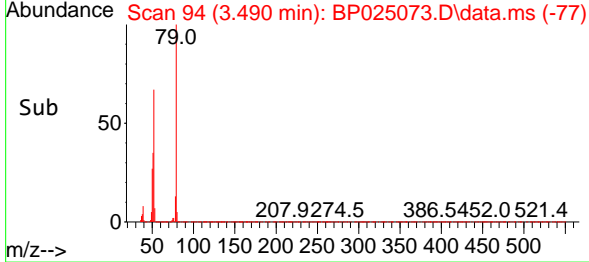
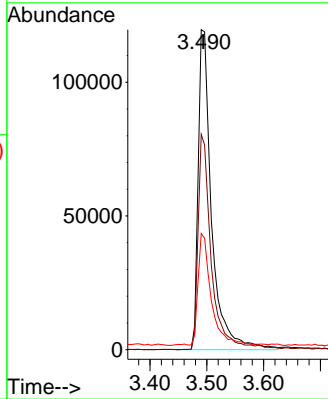
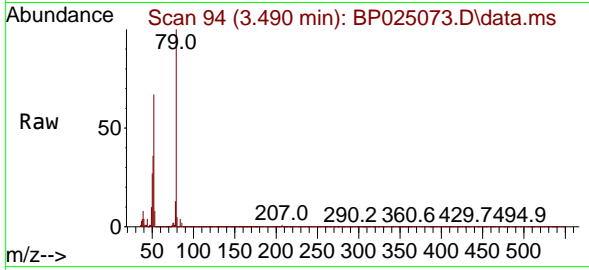


#3
 Pyridine
 Concen: 9.598 ng
 RT: 3.490 min Scan# 94
 Delta R.T. 0.000 min
 Lab File: BP025073.D
 Acq: 03 Jul 2025 11:02

Instrument :
 BNA_P
 ClientSampleId :
 SSTDICC010

Tgt Ion: 79 Resp: 197662

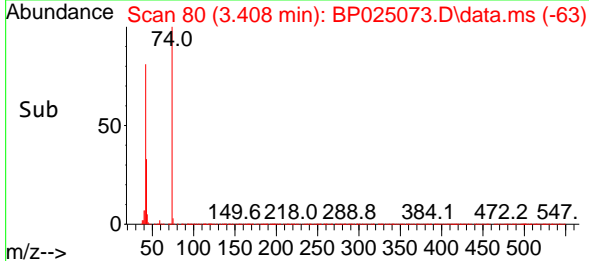
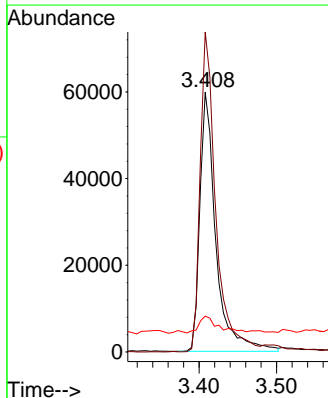
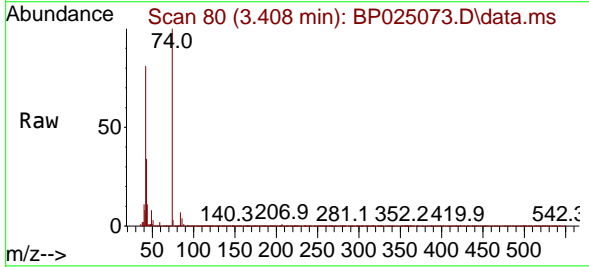
Ion	Ratio	Lower	Upper
79	100		
52	67.3	52.2	78.4
51	36.3	26.8	40.2

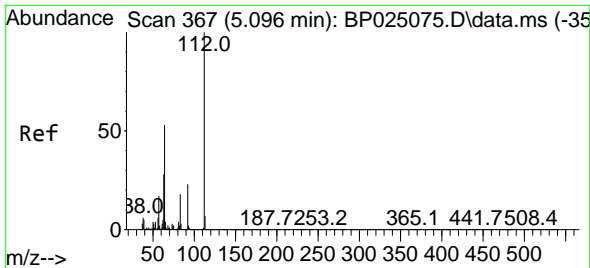


#4
 n-Nitrosodimethylamine
 Concen: 9.836 ng
 RT: 3.408 min Scan# 80
 Delta R.T. 0.000 min
 Lab File: BP025073.D
 Acq: 03 Jul 2025 11:02

Tgt Ion: 42 Resp: 85827

Ion	Ratio	Lower	Upper
42	100		
74	123.2	105.2	157.8
44	13.8	6.6	9.8



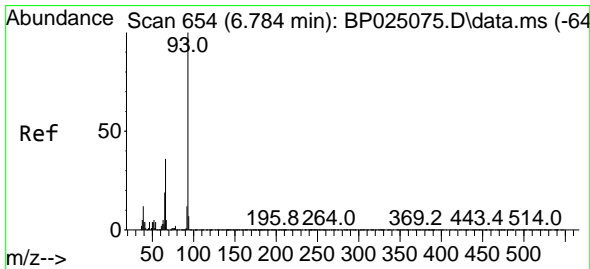
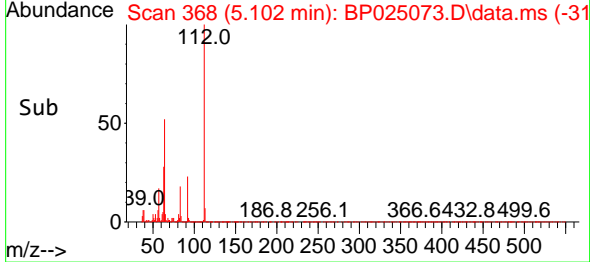
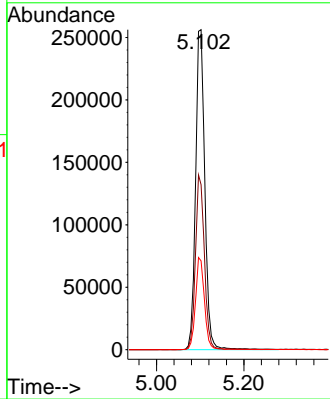
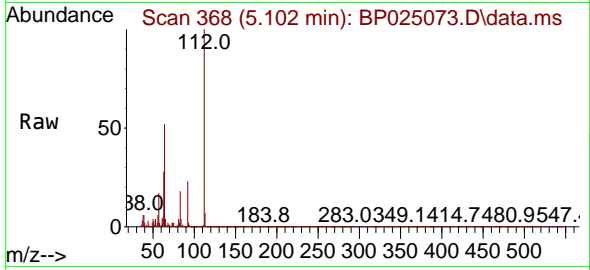


#5
 2-Fluorophenol
 Concen: 19.462 ng
 RT: 5.102 min Scan# 30
 Delta R.T. 0.006 min
 Lab File: BP025073.D
 Acq: 03 Jul 2025 11:02

Instrument : BNA_P
 ClientSampleId : SSTDICC010

Tgt Ion: 112 Resp: 376746

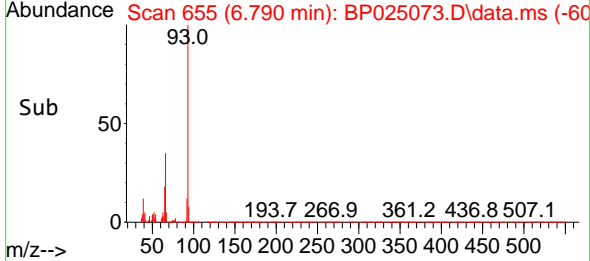
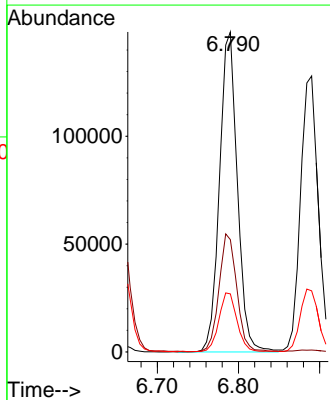
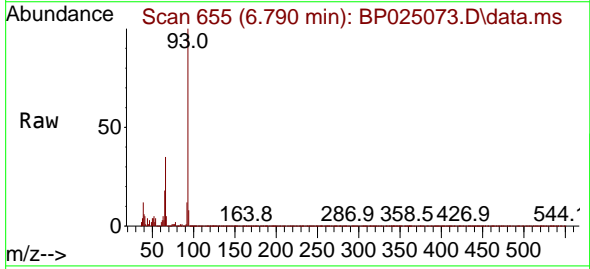
Ion	Ratio	Lower	Upper
112	100		
64	51.6	42.0	63.0
63	27.7	22.2	33.2

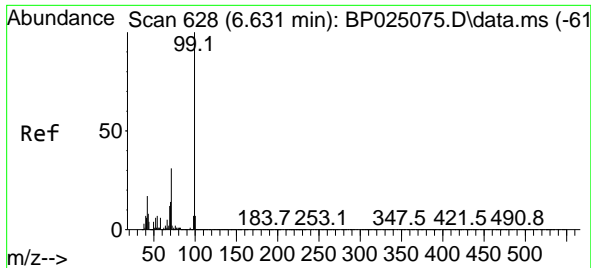


#6
 Aniline
 Concen: 9.619 ng
 RT: 6.790 min Scan# 655
 Delta R.T. 0.006 min
 Lab File: BP025073.D
 Acq: 03 Jul 2025 11:02

Tgt Ion: 93 Resp: 227023

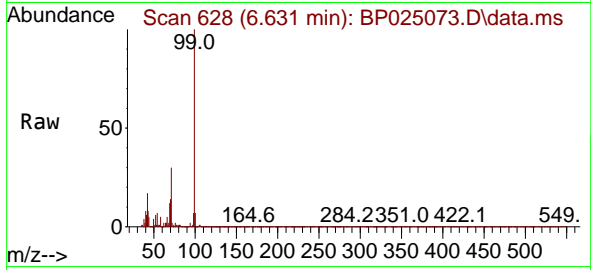
Ion	Ratio	Lower	Upper
93	100		
66	35.1	28.9	43.3
65	18.2	15.2	22.8





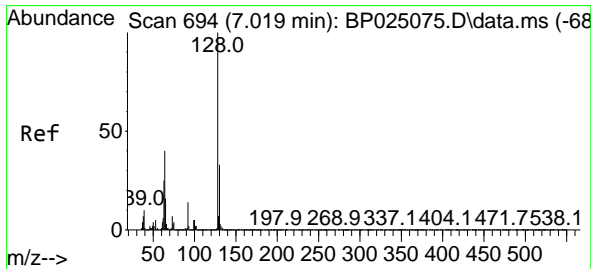
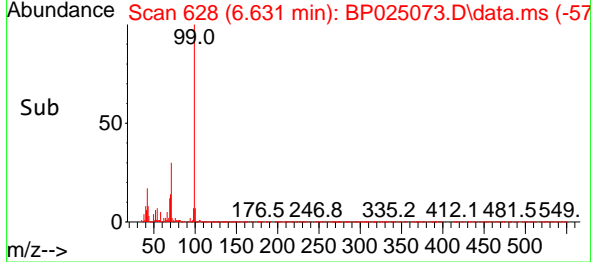
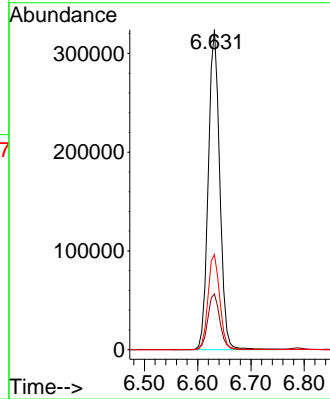
#7
 Phenol-d6
 Concen: 19.108 ng
 RT: 6.631 min Scan# 61
 Delta R.T. 0.000 min
 Lab File: BP025073.D
 Acq: 03 Jul 2025 11:02

Instrument :
 BNA_P
 ClientSampleId :
 SSTDICC010



Tgt Ion: 99 Resp: 482699

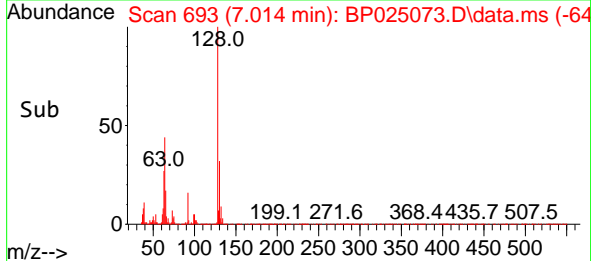
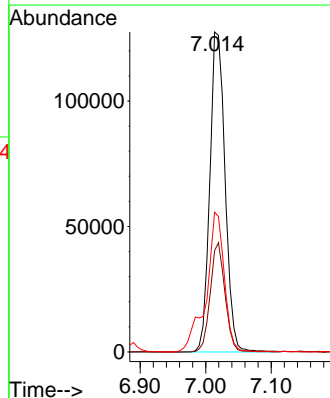
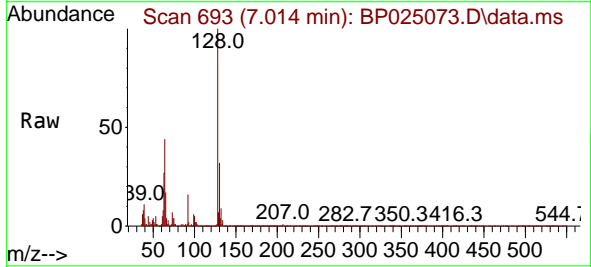
Ion	Ratio	Lower	Upper
99	100		
42	17.4	13.6	20.4
71	29.7	24.4	36.6

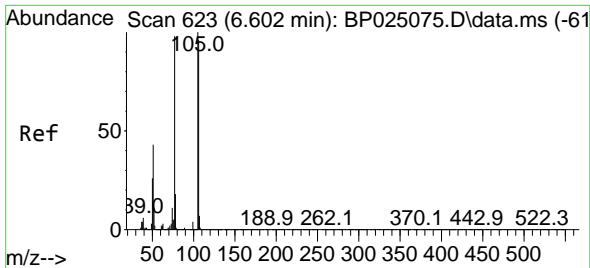


#8
 2-Chlorophenol
 Concen: 9.556 ng
 RT: 7.014 min Scan# 693
 Delta R.T. -0.006 min
 Lab File: BP025073.D
 Acq: 03 Jul 2025 11:02

Tgt Ion: 128 Resp: 206980

Ion	Ratio	Lower	Upper
128	100		
130	31.6	12.9	52.9
64	43.7	20.3	60.3





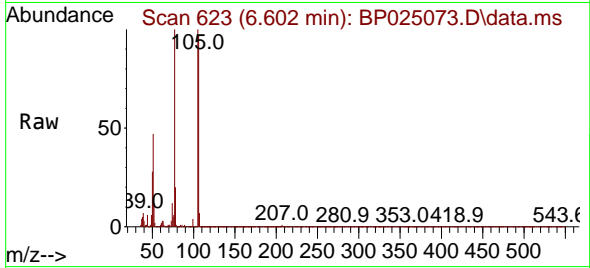
#9
 Benzaldehyde
 Concen: 11.743 ng
 RT: 6.602 min Scan# 61
 Delta R.T. -0.000 min
 Lab File: BP025073.D
 Acq: 03 Jul 2025 11:02

Instrument :

BNA_P

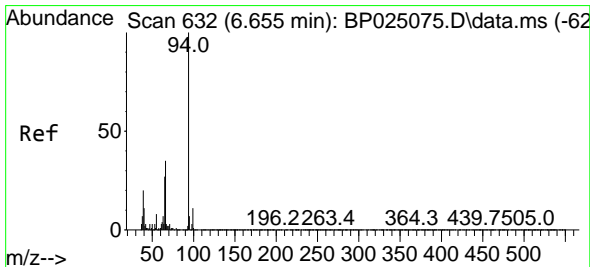
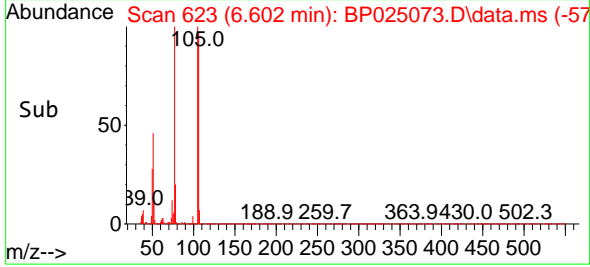
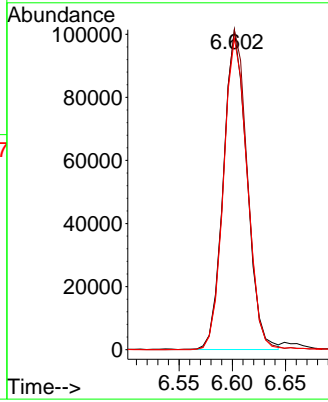
ClientSampleId :

SSTDICC010



Tgt Ion: 77 Resp: 154921

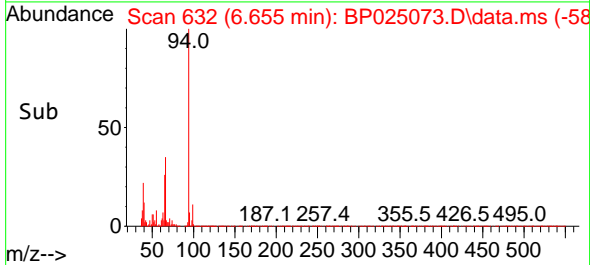
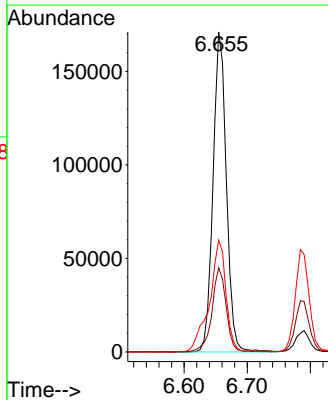
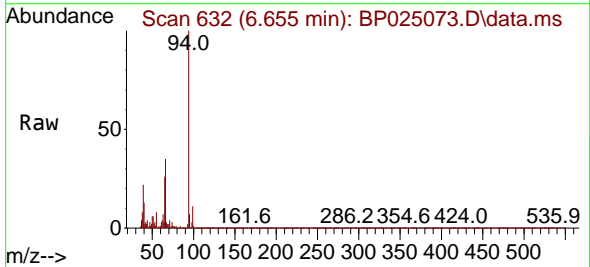
Ion	Ratio	Lower	Upper
77	100		
105	100.1	82.4	122.4
106	97.4	78.3	118.3

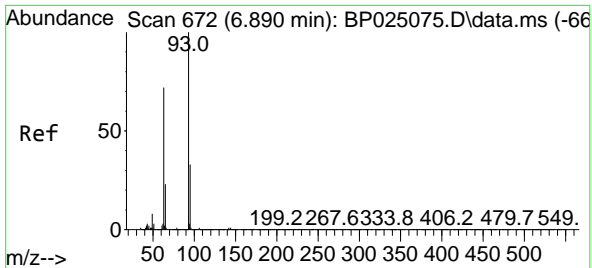


#10
 Phenol
 Concen: 9.763 ng
 RT: 6.655 min Scan# 632
 Delta R.T. 0.000 min
 Lab File: BP025073.D
 Acq: 03 Jul 2025 11:02

Tgt Ion: 94 Resp: 250593

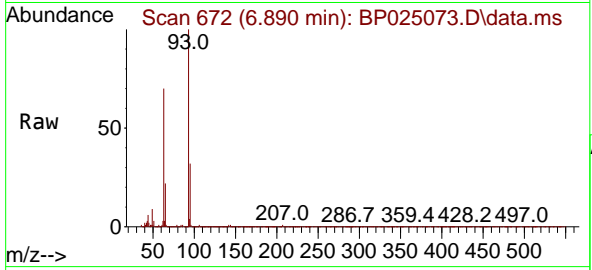
Ion	Ratio	Lower	Upper
94	100		
65	26.3	6.9	46.9
66	34.9	14.6	54.6



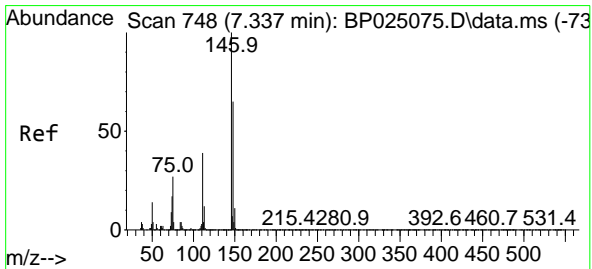
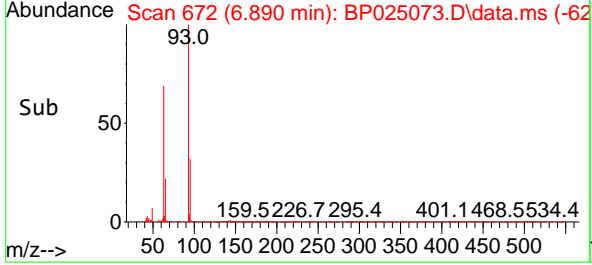
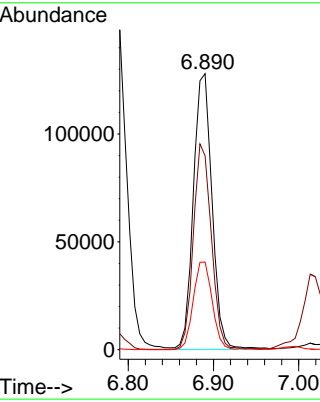


#11
 bis(2-Chloroethyl)ether
 Concen: 9.885 ng
 RT: 6.890 min Scan# 611
 Delta R.T. 0.000 min
 Lab File: BP025073.D
 Acq: 03 Jul 2025 11:02

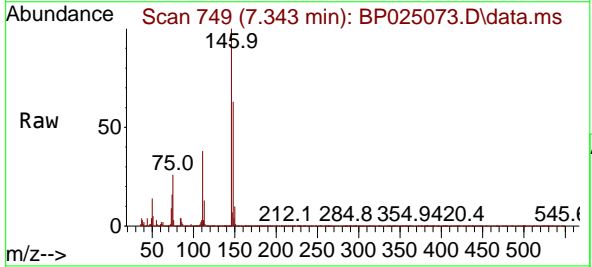
Instrument :
 BNA_P
 ClientSampleId :
 SSTDICC010



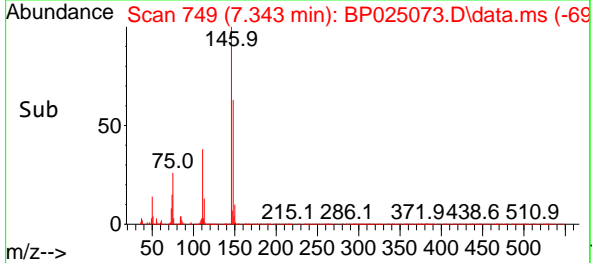
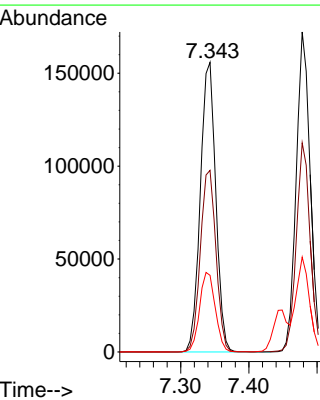
Tgt Ion: 93 Resp: 195263
 Ion Ratio Lower Upper
 93 100
 63 70.2 51.9 91.9
 95 31.8 12.4 52.4

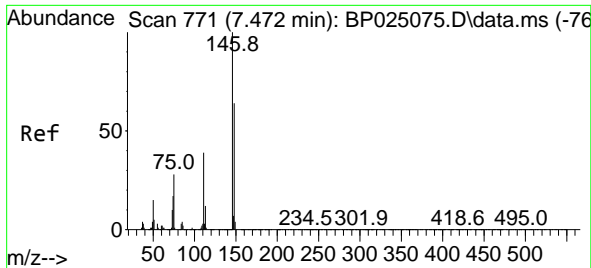


#12
 1,3-Dichlorobenzene
 Concen: 10.143 ng
 RT: 7.343 min Scan# 749
 Delta R.T. 0.006 min
 Lab File: BP025073.D
 Acq: 03 Jul 2025 11:02



Tgt Ion: 146 Resp: 245857
 Ion Ratio Lower Upper
 146 100
 148 62.7 51.9 77.9
 75 26.5 21.8 32.6

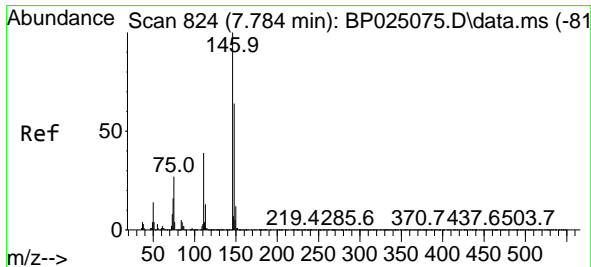
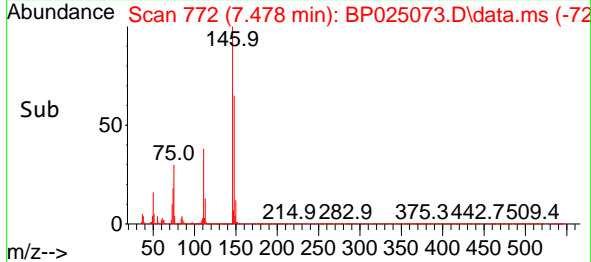
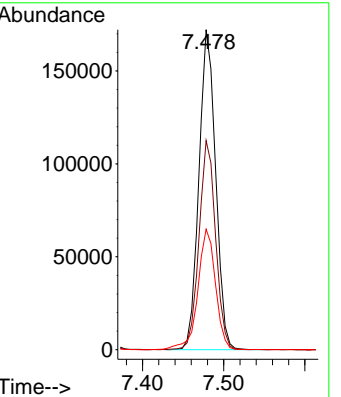
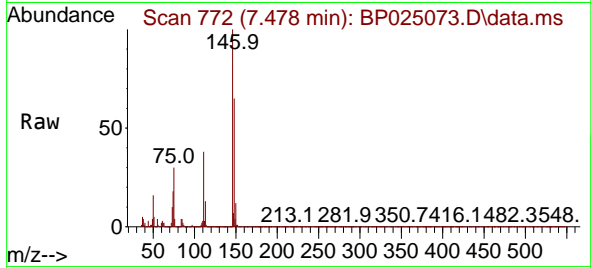




#13
 1,4-Dichlorobenzene
 Concen: 10.004 ng
 RT: 7.478 min Scan# 771
 Delta R.T. 0.006 min
 Lab File: BP025073.D
 Acq: 03 Jul 2025 11:02

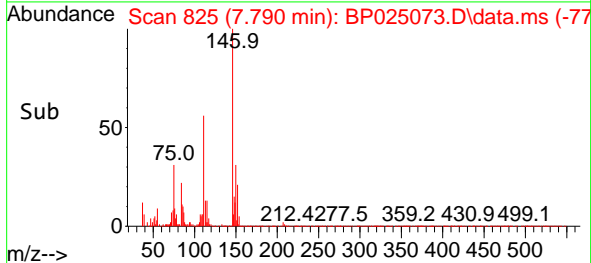
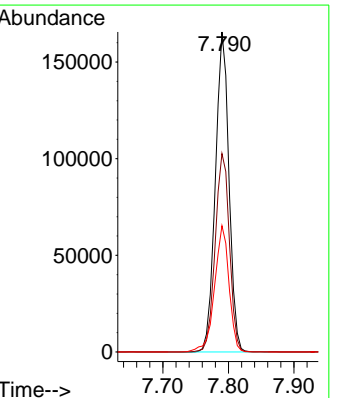
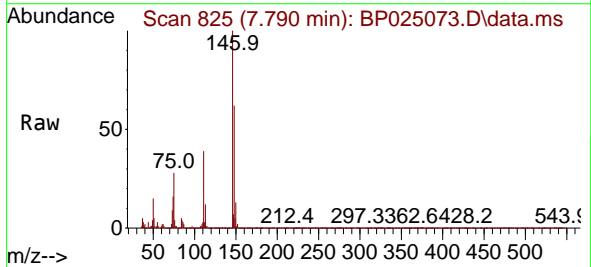
Instrument :
 BNA_P
 ClientSampleId :
 SSTDICC010

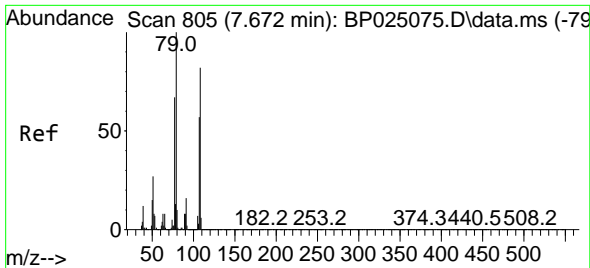
Tgt Ion	Resp	Lower	Upper
146	245523		
146	100		
148	65.4	51.1	76.7
111	37.7	31.2	46.8



#14
 1,2-Dichlorobenzene
 Concen: 10.079 ng
 RT: 7.790 min Scan# 825
 Delta R.T. 0.006 min
 Lab File: BP025073.D
 Acq: 03 Jul 2025 11:02

Tgt Ion	Resp	Lower	Upper
146	237961		
146	100		
148	62.0	51.1	76.7
111	39.5	31.2	46.8

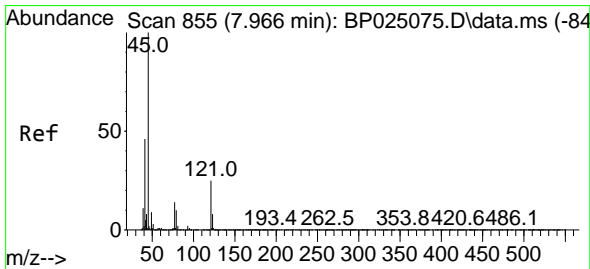
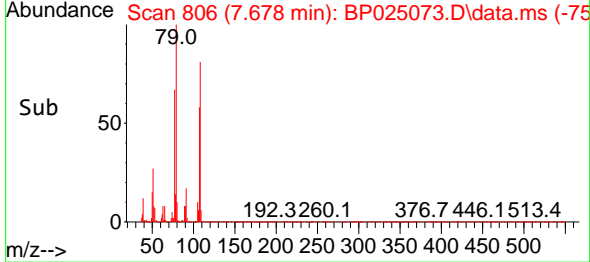
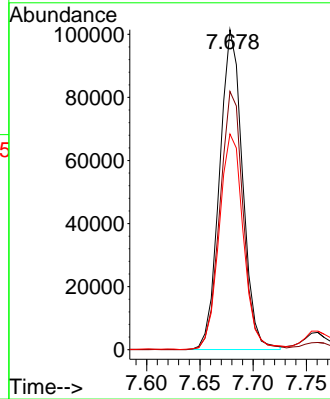
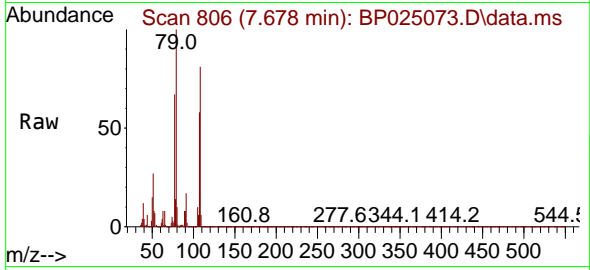




#15
 Benzyl Alcohol
 Concen: 9.025 ng
 RT: 7.678 min Scan# 805
 Delta R.T. 0.006 min
 Lab File: BP025073.D
 Acq: 03 Jul 2025 11:02

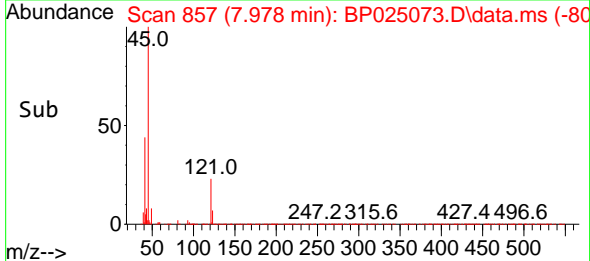
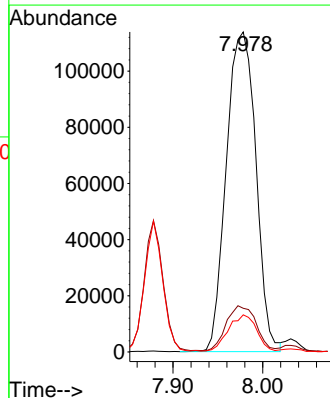
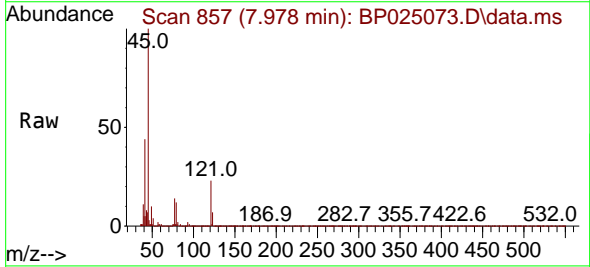
Instrument :
 BNA_P
 ClientSampleId :
 SSTDICC010

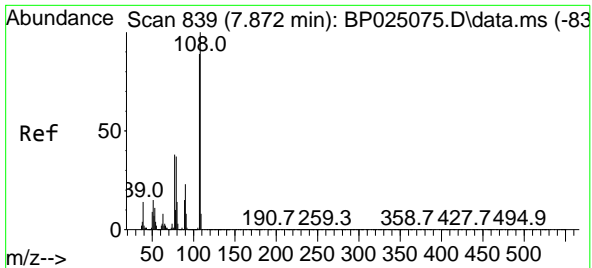
Tgt Ion: 79 Resp: 152168
 Ion Ratio Lower Upper
 79 100
 108 80.7 66.0 99.0
 77 67.4 53.4 80.2



#16
 2,2'-oxybis(1-Chloropropane)
 Concen: 10.150 ng
 RT: 7.978 min Scan# 857
 Delta R.T. 0.012 min
 Lab File: BP025073.D
 Acq: 03 Jul 2025 11:02

Tgt Ion: 45 Resp: 260708
 Ion Ratio Lower Upper
 45 100
 77 13.6 0.0 34.8
 79 11.6 0.0 30.7



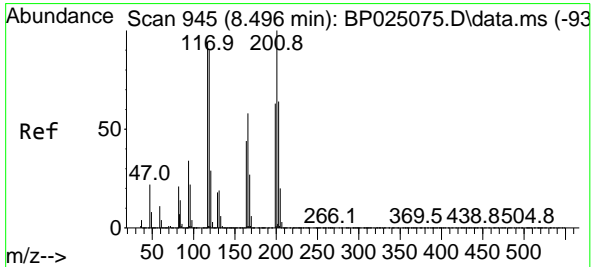
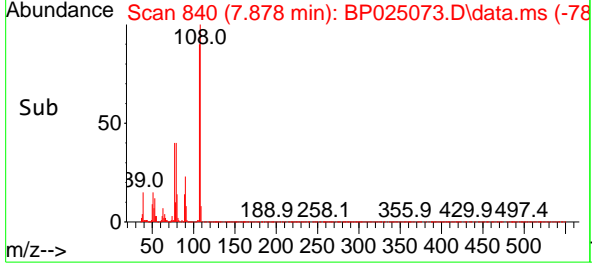
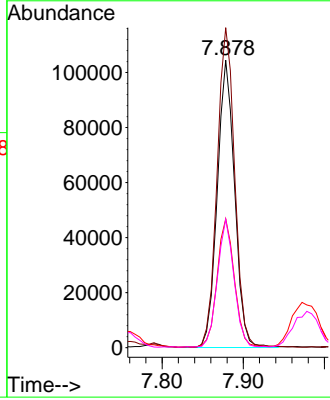
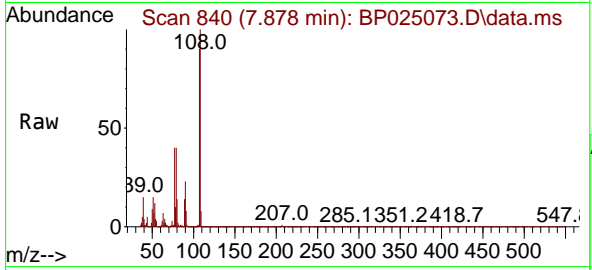


#17
 2-Methylphenol
 Concen: 9.422 ng
 RT: 7.878 min Scan# 840
 Delta R.T. 0.006 min
 Lab File: BP025073.D
 Acq: 03 Jul 2025 11:02

Instrument :
 BNA_P
 ClientSampleId :
 SSTDICC010

Tgt Ion:107 Resp: 155778

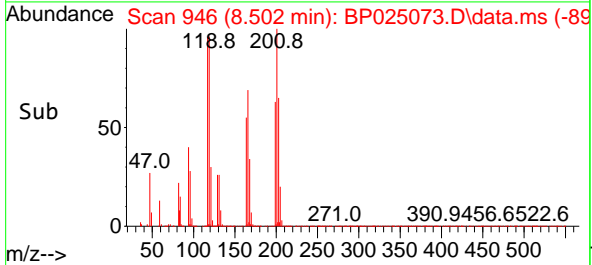
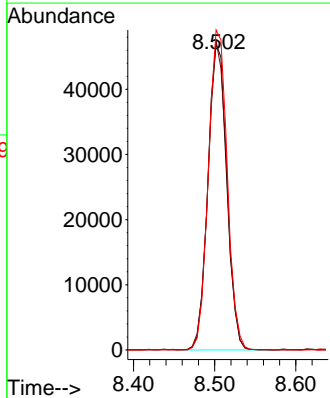
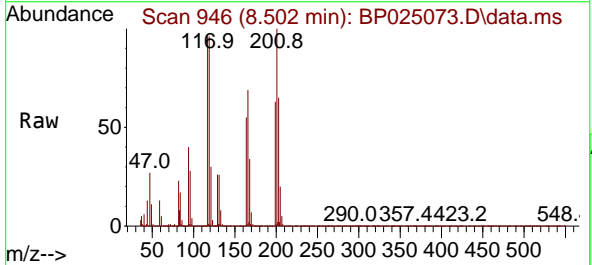
Ion	Ratio	Lower	Upper
107	100		
108	111.3	89.7	134.5
77	44.8	34.2	51.4
79	44.6	33.4	50.2

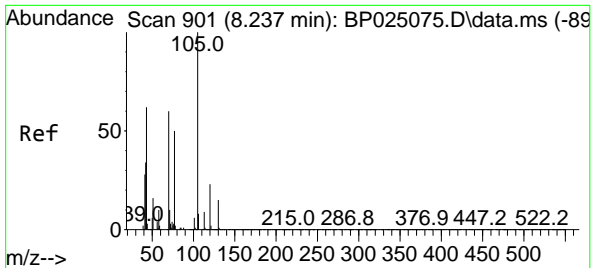


#18
 Hexachloroethane
 Concen: 9.453 ng
 RT: 8.502 min Scan# 946
 Delta R.T. 0.006 min
 Lab File: BP025073.D
 Acq: 03 Jul 2025 11:02

Tgt Ion:117 Resp: 75576

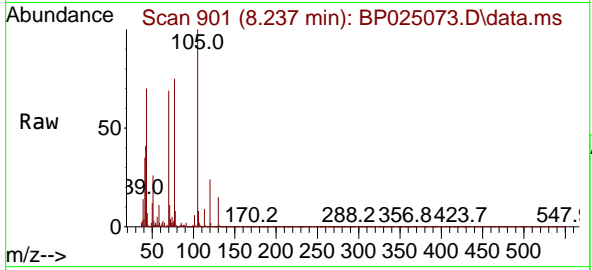
Ion	Ratio	Lower	Upper
117	100		
119	100.9	76.6	115.0
201	104.6	85.4	128.2





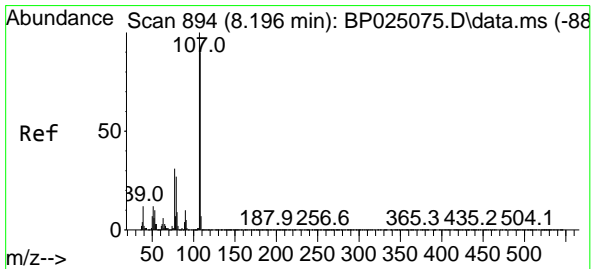
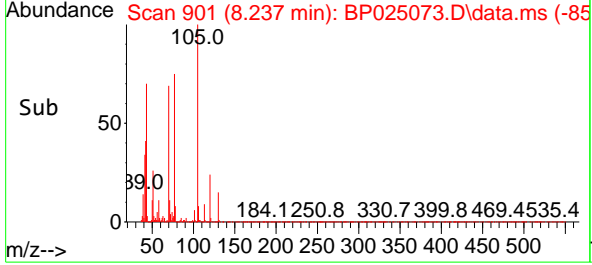
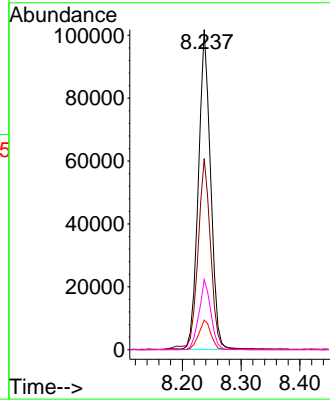
#19
 n-Nitroso-di-n-propylamine
 Concen: 9.774 ng
 RT: 8.237 min Scan# 901
 Delta R.T. 0.000 min
 Lab File: BP025073.D
 Acq: 03 Jul 2025 11:02

Instrument : BNA_P
 ClientSampleId : SSTDICC010

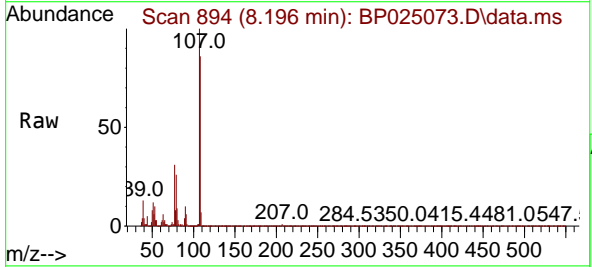


Tgt Ion: 70 Resp: 146424

Ion	Ratio	Lower	Upper
70	100		
42	59.7	46.5	69.7
101	9.3	7.9	11.9
130	21.9	19.3	28.9

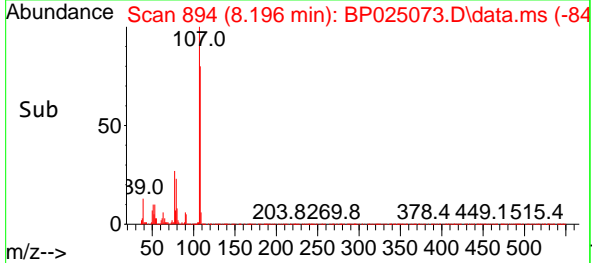
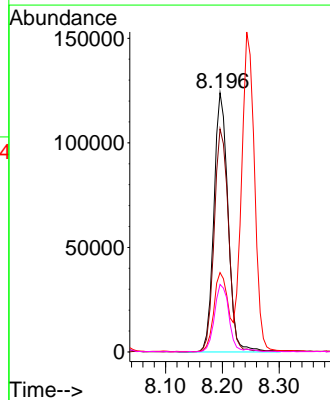


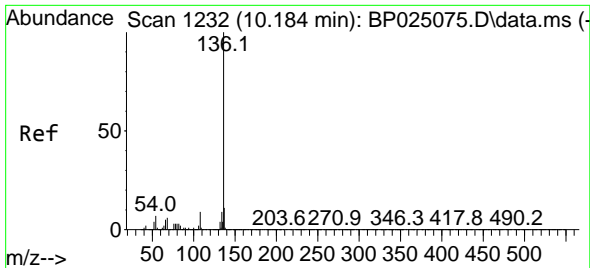
#20
 3+4-Methylphenols
 Concen: 9.225 ng
 RT: 8.196 min Scan# 894
 Delta R.T. 0.000 min
 Lab File: BP025073.D
 Acq: 03 Jul 2025 11:02



Tgt Ion: 107 Resp: 213641

Ion	Ratio	Lower	Upper
107	100		
108	86.1	69.5	109.5
77	30.6	11.4	51.4
79	26.1	6.9	46.9



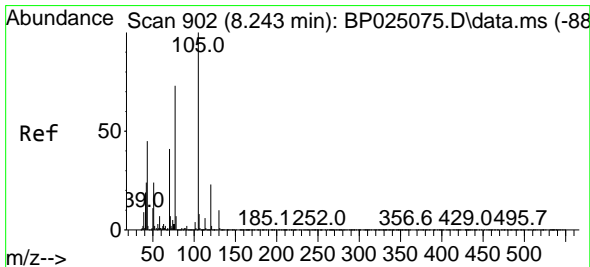
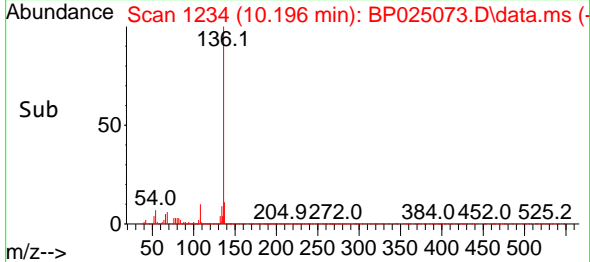
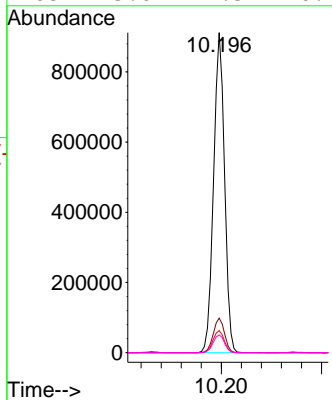
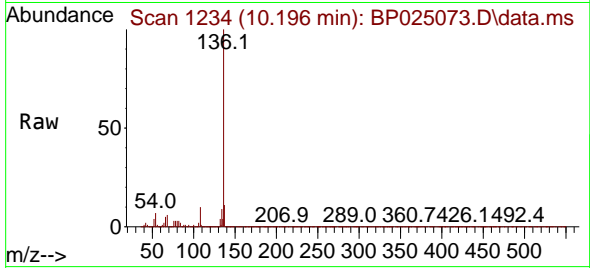


#21
 Naphthalene-d8
 Concen: 20.000 ng
 RT: 10.196 min Scan# 11
 Delta R.T. 0.012 min
 Lab File: BP025073.D
 Acq: 03 Jul 2025 11:02

Instrument :
 BNA_P
 ClientSampleId :
 SSTDICC010

Tgt Ion:136 Resp: 1376560

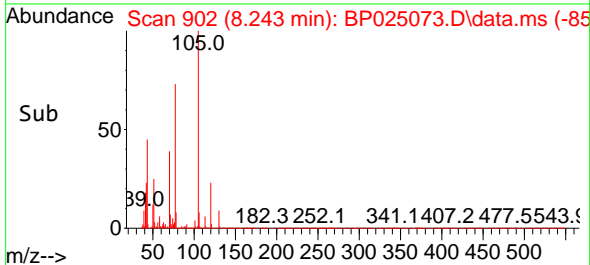
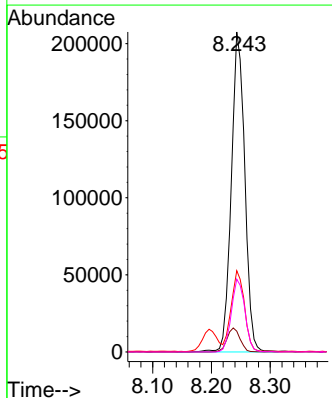
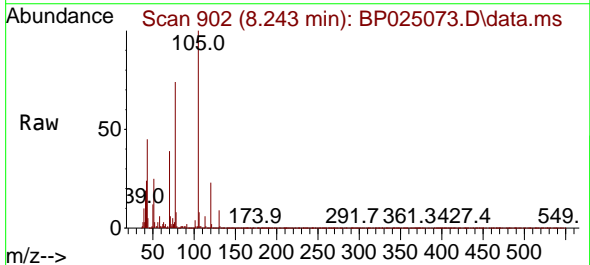
Ion	Ratio	Lower	Upper
136	100		
137	10.8	8.7	13.1
54	6.9	5.4	8.2
68	5.6	4.5	6.7

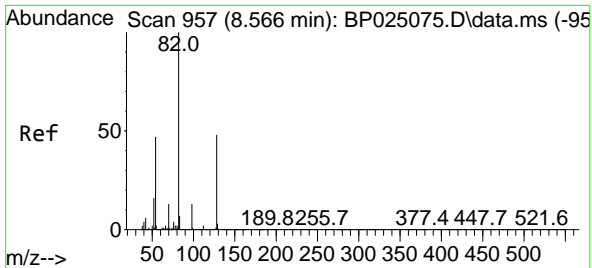


#22
 Acetophenone
 Concen: 10.159 ng
 RT: 8.243 min Scan# 902
 Delta R.T. 0.000 min
 Lab File: BP025073.D
 Acq: 03 Jul 2025 11:02

Tgt Ion:105 Resp: 330725

Ion	Ratio	Lower	Upper
105	100		
71	6.5	5.4	8.2
51	25.4	19.6	29.4
120	22.7	18.8	28.2

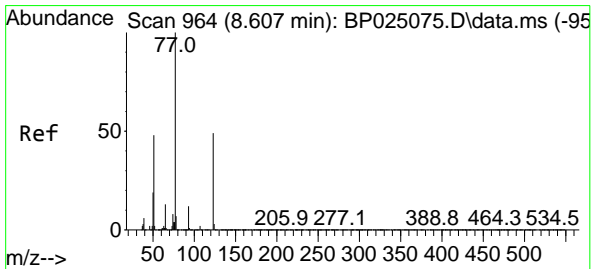
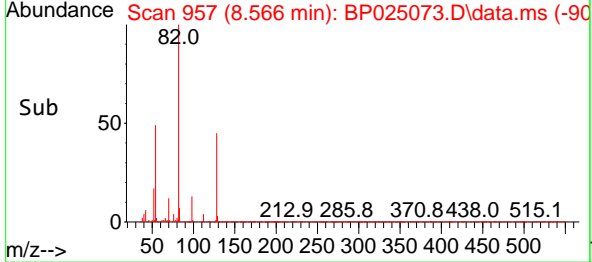
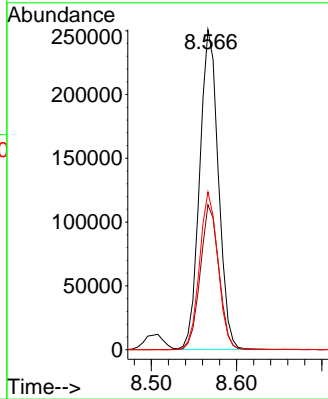
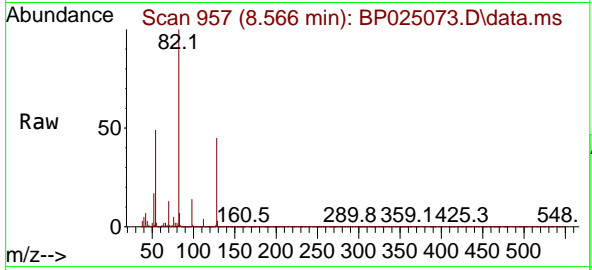




#23
 Nitrobenzene-d5
 Concen: 18.454 ng
 RT: 8.566 min Scan# 91
 Delta R.T. 0.000 min
 Lab File: BP025073.D
 Acq: 03 Jul 2025 11:02

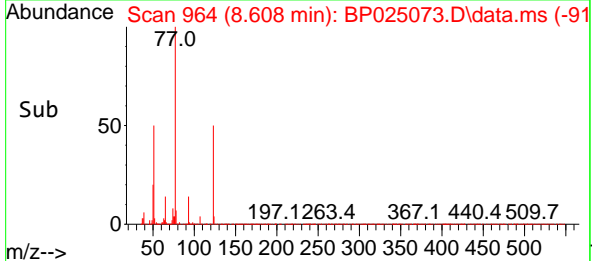
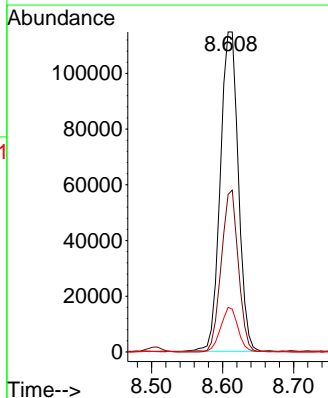
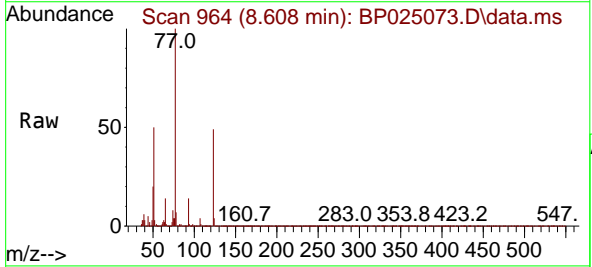
Instrument :
 BNA_P
 ClientSampleId :
 SSTDICC010

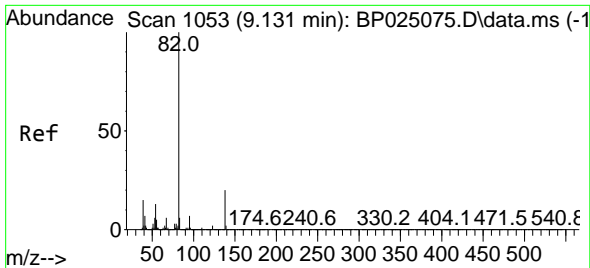
Tgt Ion	Resp	Lower	Upper
82	381978		
128	45.3	38.4	57.6
54	49.3	37.8	56.6



#24
 Nitrobenzene
 Concen: 9.560 ng
 RT: 8.608 min Scan# 964
 Delta R.T. 0.000 min
 Lab File: BP025073.D
 Acq: 03 Jul 2025 11:02

Tgt Ion	Resp	Lower	Upper
77	201551		
123	49.2	39.0	58.6
65	14.0	10.7	16.1



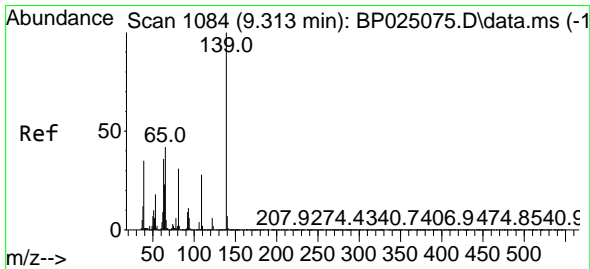
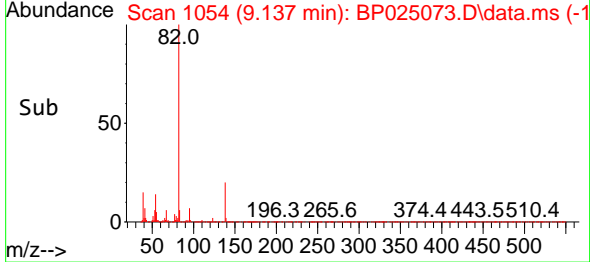
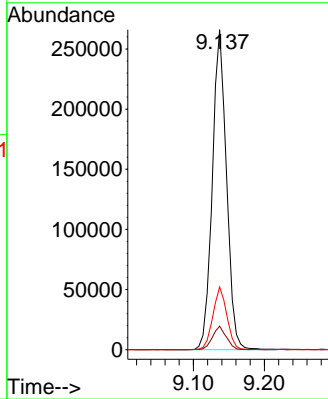
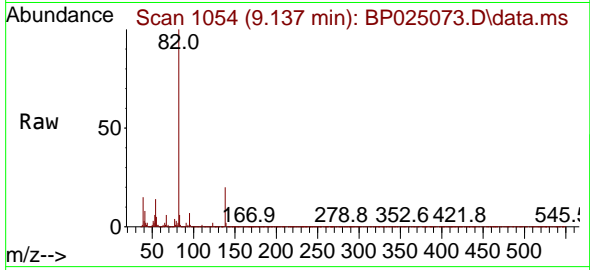


#25
 Isophorone
 Concen: 9.507 ng
 RT: 9.137 min Scan# 1054
 Delta R.T. 0.006 min
 Lab File: BP025073.D
 Acq: 03 Jul 2025 11:02

Instrument : BNA_P
 Client Sample Id : SSTDICC010

Tgt Ion: 82 Resp: 367740

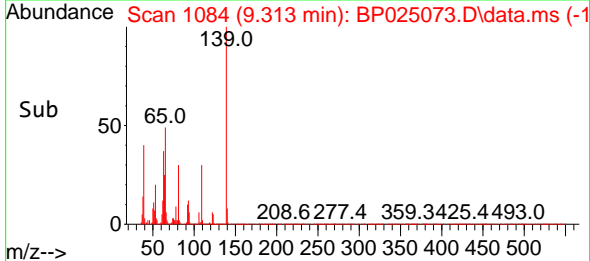
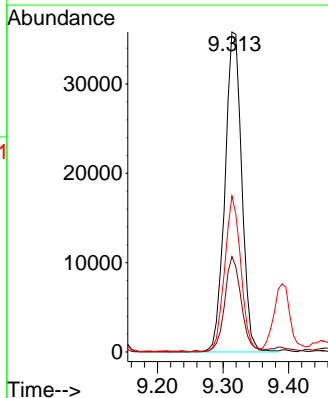
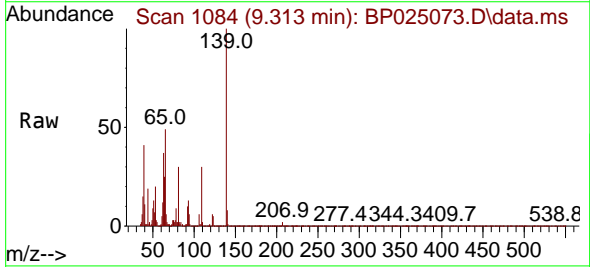
Ion	Ratio	Lower	Upper
82	100		
95	7.3	5.8	8.6
138	19.6	15.7	23.5

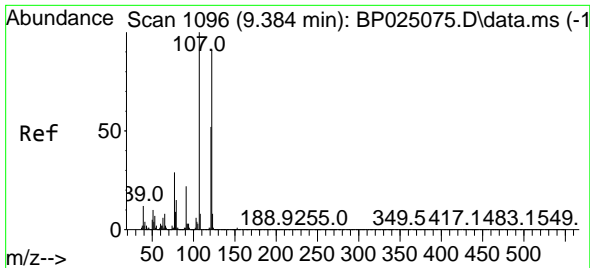


#26
 2-Nitrophenol
 Concen: 9.106 ng
 RT: 9.313 min Scan# 1084
 Delta R.T. 0.000 min
 Lab File: BP025073.D
 Acq: 03 Jul 2025 11:02

Tgt Ion: 139 Resp: 63769

Ion	Ratio	Lower	Upper
139	100		
109	29.8	22.3	33.5
65	48.7	33.8	50.8



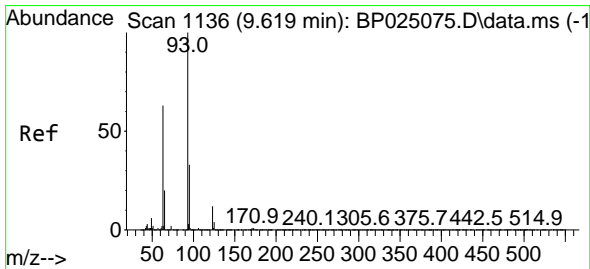
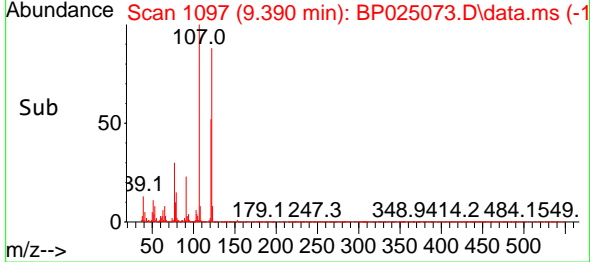
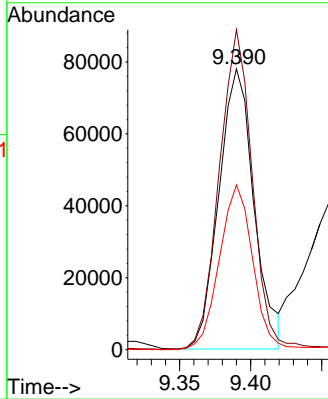
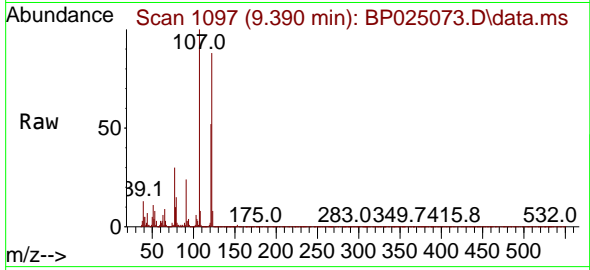


#27
 2,4-Dimethylphenol
 Concen: 9.307 ng
 RT: 9.390 min Scan# 1096
 Delta R.T. 0.006 min
 Lab File: BP025073.D
 Acq: 03 Jul 2025 11:02

Instrument :
 BNA_P
 ClientSampleId :
 SSTDICC010

Tgt Ion:122 Resp: 134296

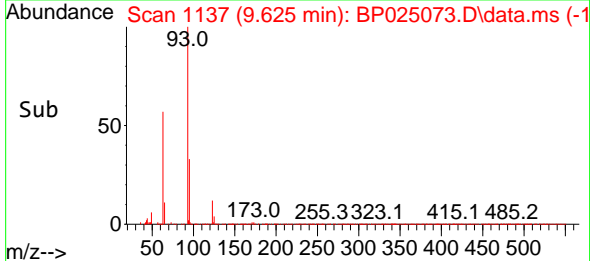
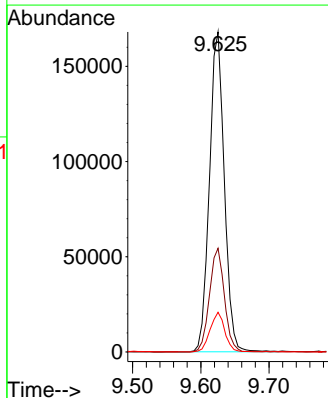
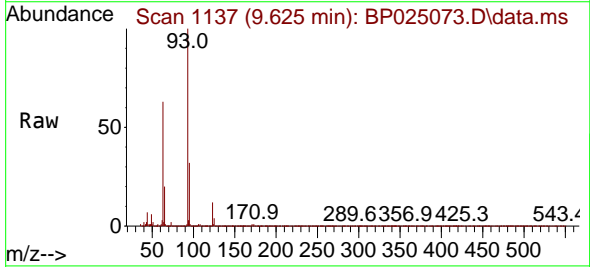
Ion	Ratio	Lower	Upper
122	100		
107	113.9	88.2	132.2
121	58.7	46.1	69.1

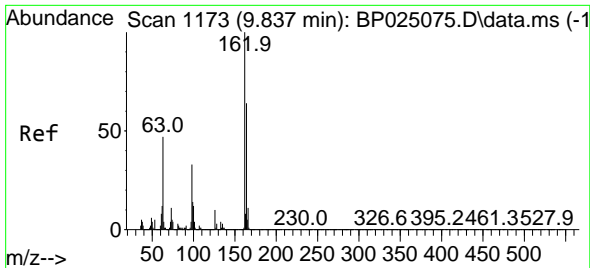


#28
 bis(2-Chloroethoxy)methane
 Concen: 9.722 ng
 RT: 9.625 min Scan# 1137
 Delta R.T. 0.006 min
 Lab File: BP025073.D
 Acq: 03 Jul 2025 11:02

Tgt Ion: 93 Resp: 255336

Ion	Ratio	Lower	Upper
93	100		
95	32.4	26.4	39.6
123	12.4	10.1	15.1

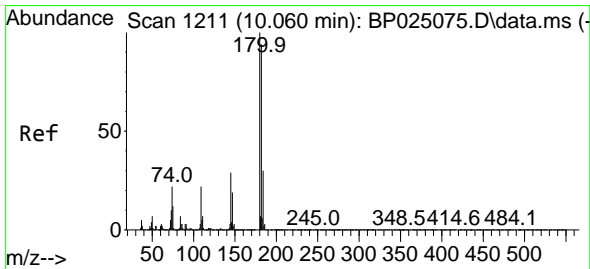
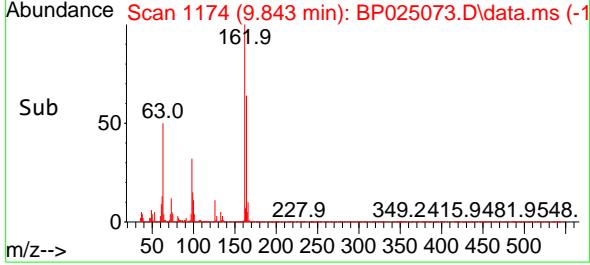
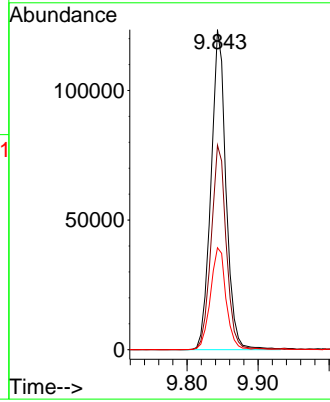
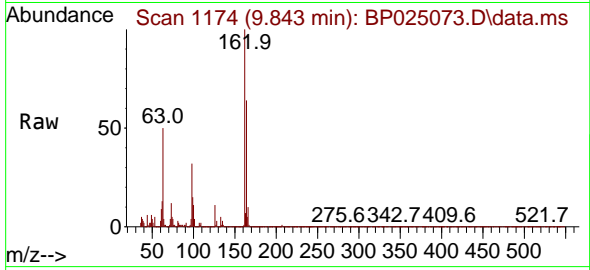




#29
 2,4-Dichlorophenol
 Concen: 9.059 ng
 RT: 9.843 min Scan# 1173
 Delta R.T. 0.006 min
 Lab File: BP025073.D
 Acq: 03 Jul 2025 11:02

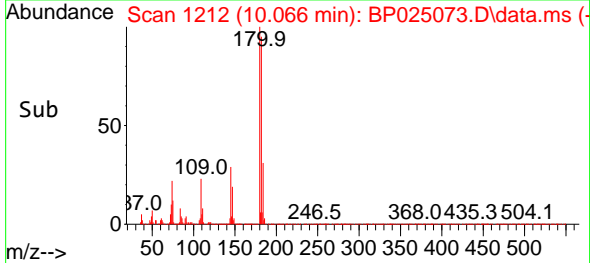
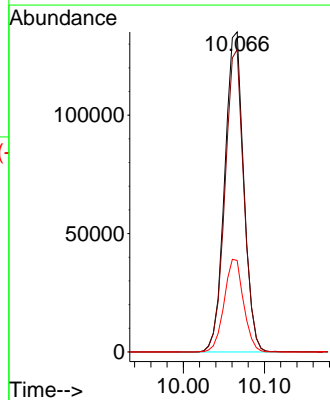
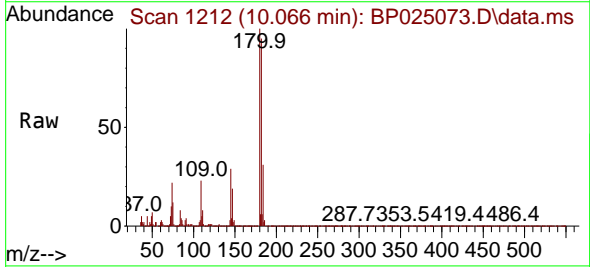
Instrument :
 BNA_P
 ClientSampleId :
 SSTDICC010

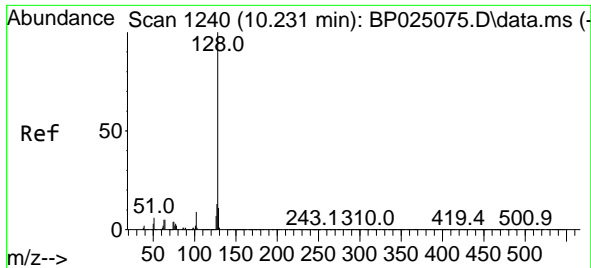
Tgt Ion:162 Resp: 181263
 Ion Ratio Lower Upper
 162 100
 164 63.9 44.1 84.1
 98 31.9 13.1 53.1



#30
 1,2,4-Trichlorobenzene
 Concen: 9.913 ng
 RT: 10.066 min Scan# 1212
 Delta R.T. 0.006 min
 Lab File: BP025073.D
 Acq: 03 Jul 2025 11:02

Tgt Ion:180 Resp: 219650
 Ion Ratio Lower Upper
 180 100
 182 94.5 75.1 112.7
 145 28.6 23.3 34.9



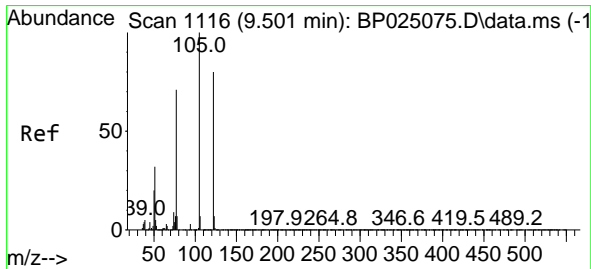
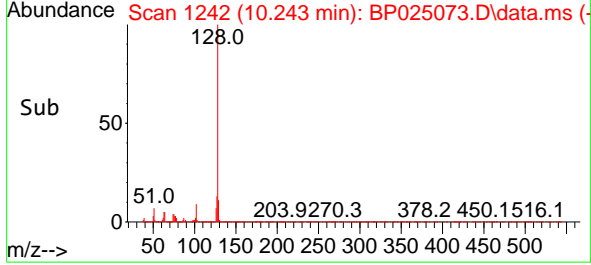
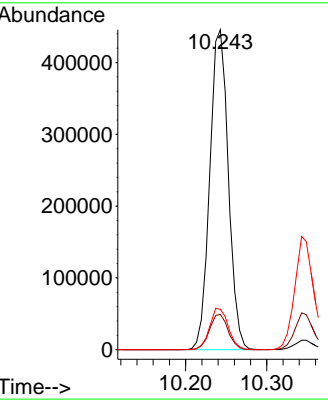
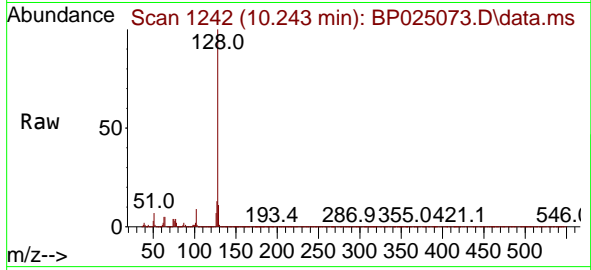


#31
 Naphthalene
 Concen: 10.005 ng
 RT: 10.243 min Scan# 1108
 Delta R.T. 0.012 min
 Lab File: BP025073.D
 Acq: 03 Jul 2025 11:02

Instrument :
 BNA_P
 ClientSampleId :
 SSTDICC010

Tgt Ion:128 Resp: 709141

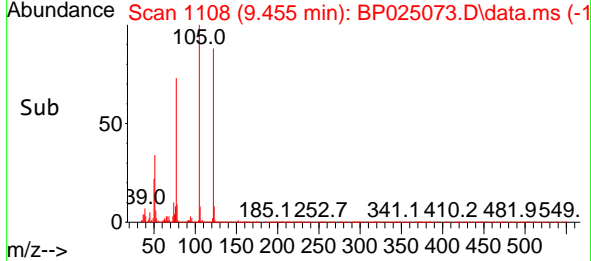
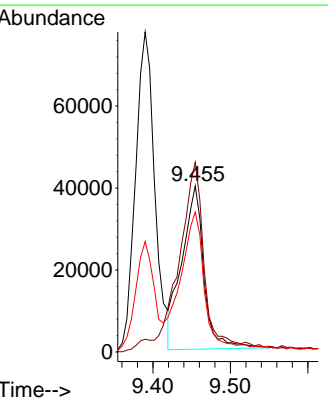
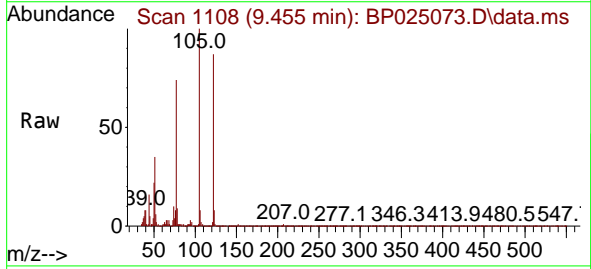
Ion	Ratio	Lower	Upper
128	100		
129	11.0	8.9	13.3
127	12.6	10.4	15.6

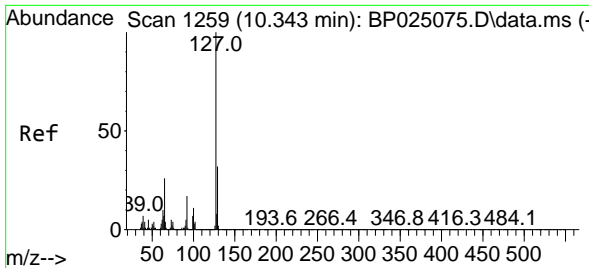


#32
 Benzoic acid
 Concen: 10.455 ng
 RT: 9.455 min Scan# 1108
 Delta R.T. -0.046 min
 Lab File: BP025073.D
 Acq: 03 Jul 2025 11:02

Tgt Ion:122 Resp: 79225

Ion	Ratio	Lower	Upper
122	100		
105	114.4	101.0	141.0
77	84.3	67.6	107.6

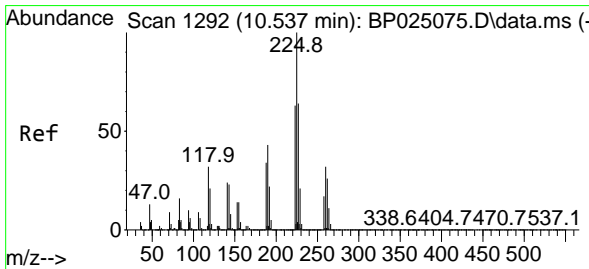
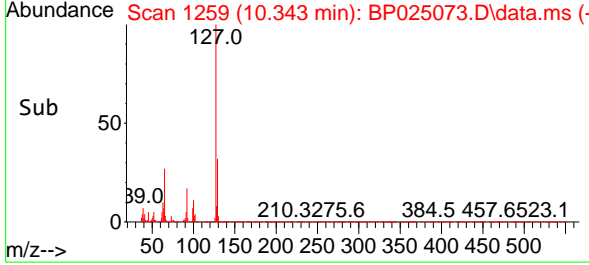
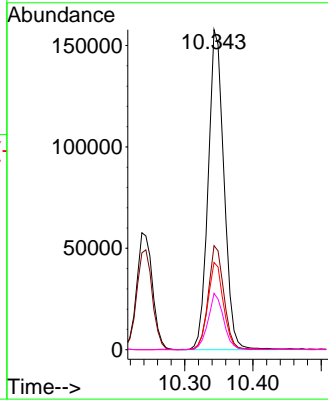
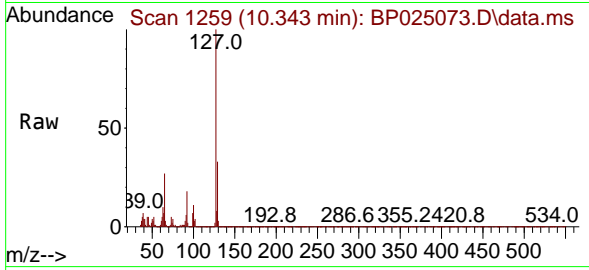




#33
 4-Chloroaniline
 Concen: 9.621 ng
 RT: 10.343 min Scan# 11
 Delta R.T. 0.000 min
 Lab File: BP025073.D
 Acq: 03 Jul 2025 11:02

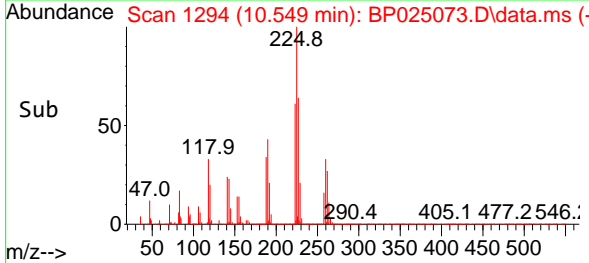
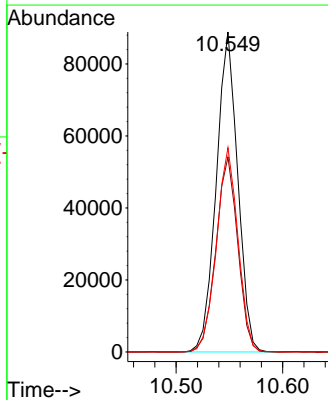
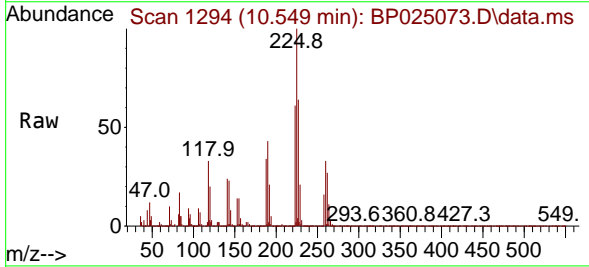
Instrument :
 BNA_P
 ClientSampleId :
 SSTDICC010

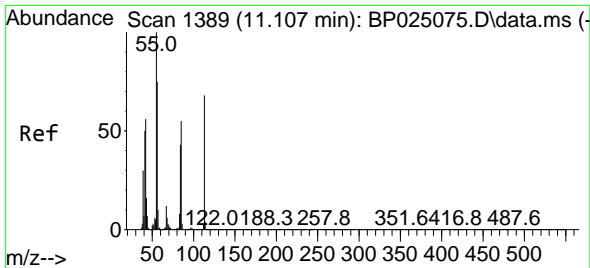
Tgt Ion	Resp	Lower	Upper
127	100		
129	32.5	25.4	38.2
65	27.3	21.0	31.6
92	17.6	13.4	20.0



#34
 Hexachlorobutadiene
 Concen: 9.767 ng
 RT: 10.549 min Scan# 1294
 Delta R.T. 0.012 min
 Lab File: BP025073.D
 Acq: 03 Jul 2025 11:02

Tgt Ion	Resp	Lower	Upper
225	100		
223	60.9	50.3	75.5
227	63.8	51.3	76.9

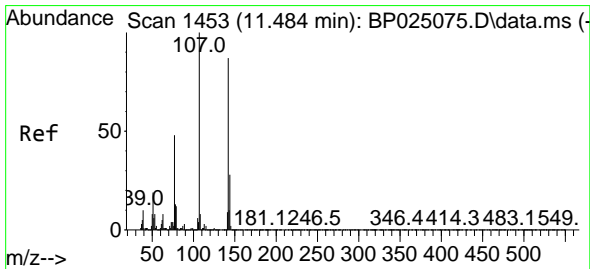
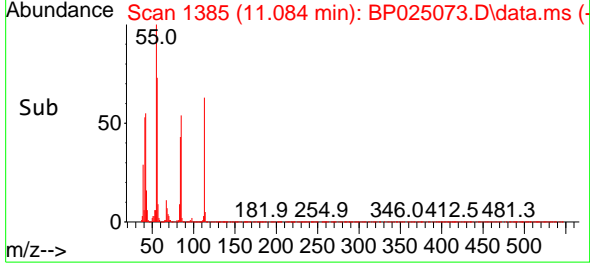
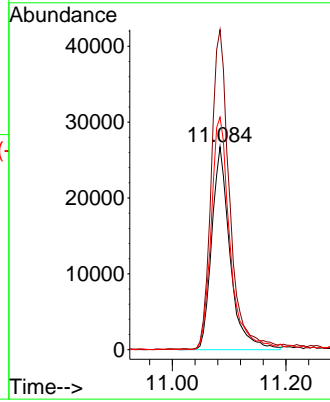
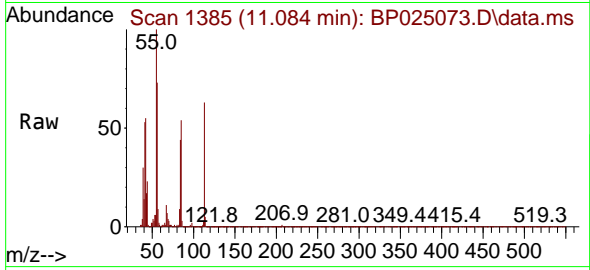




#35
 Caprolactam
 Concen: 8.700 ng
 RT: 11.084 min Scan# 11
 Delta R.T. -0.023 min
 Lab File: BP025073.D
 Acq: 03 Jul 2025 11:02

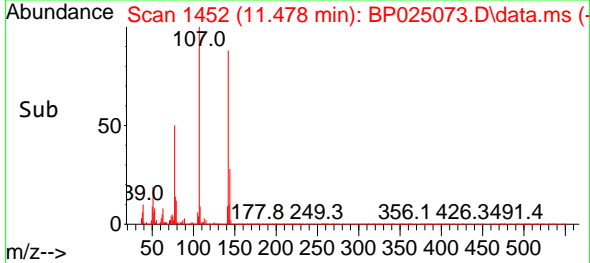
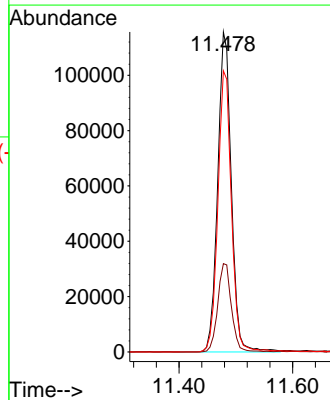
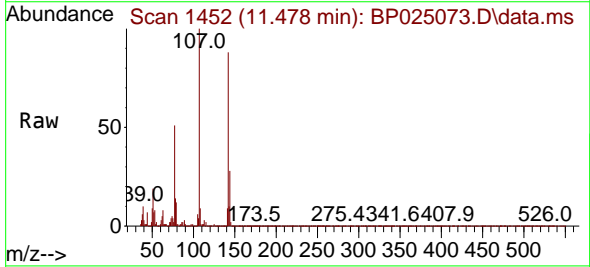
Instrument :
 BNA_P
 ClientSampleId :
 SSTDICC010

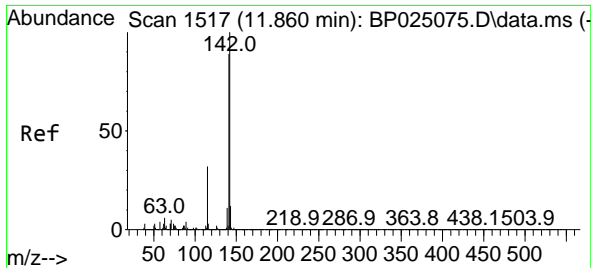
Tgt Ion:113 Resp: 59547
 Ion Ratio Lower Upper
 113 100
 55 157.7 128.1 168.1
 56 114.6 90.7 130.7



#36
 4-Chloro-3-methylphenol
 Concen: 9.193 ng
 RT: 11.478 min Scan# 1452
 Delta R.T. -0.006 min
 Lab File: BP025073.D
 Acq: 03 Jul 2025 11:02

Tgt Ion:107 Resp: 192224
 Ion Ratio Lower Upper
 107 100
 144 27.6 22.4 33.6
 142 87.9 69.6 104.4

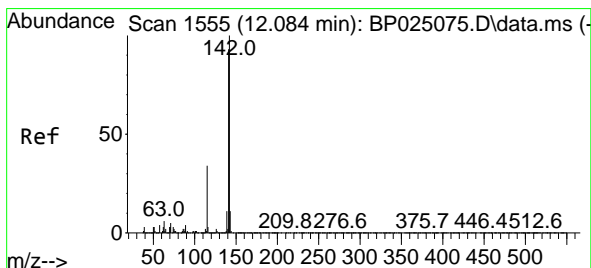
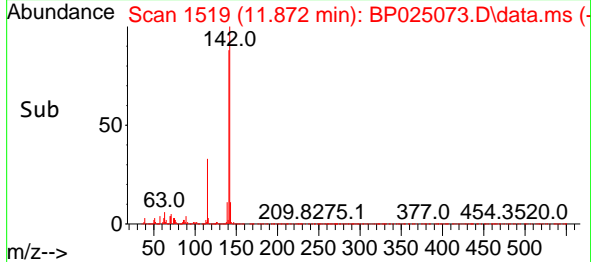
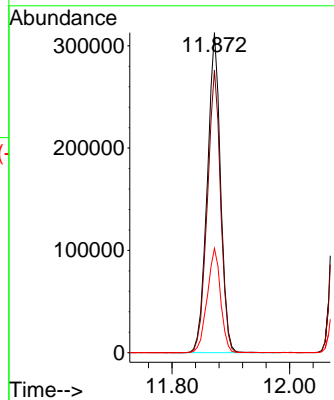
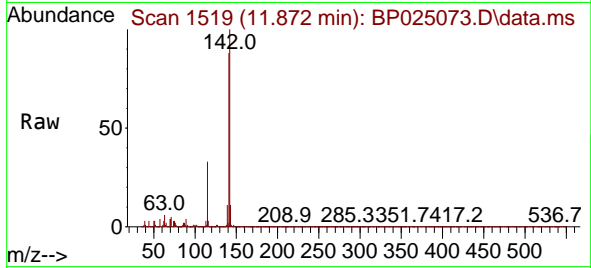




#37
 2-Methylnaphthalene
 Concen: 9.790 ng
 RT: 11.872 min Scan# 1519
 Delta R.T. 0.012 min
 Lab File: BP025073.D
 Acq: 03 Jul 2025 11:02

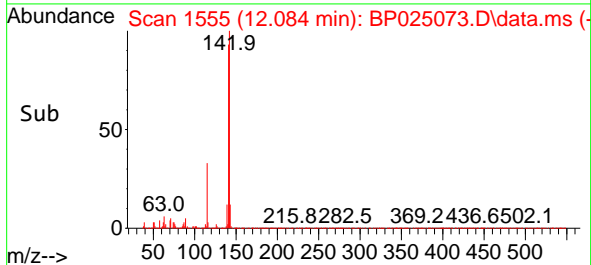
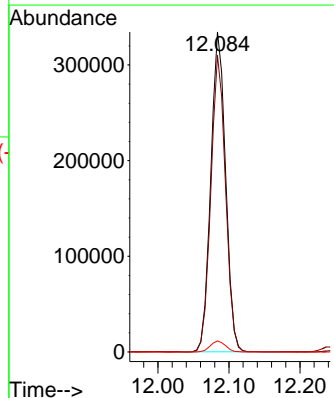
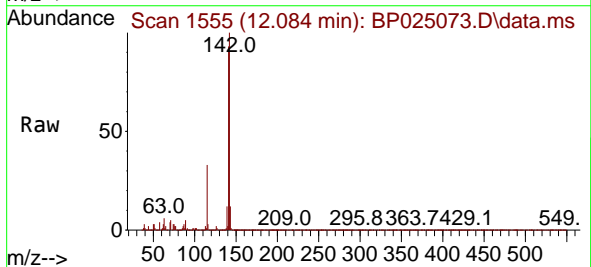
Instrument :
 BNA_P
 ClientSampleId :
 SSTDICC010

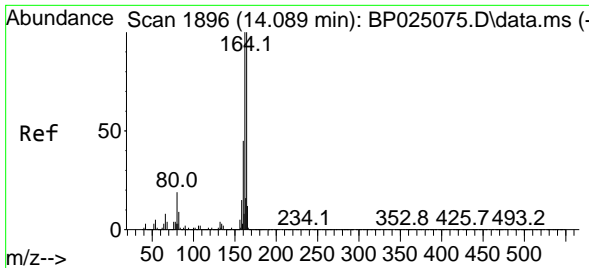
Tgt Ion:142 Resp: 489608
 Ion Ratio Lower Upper
 142 100
 141 88.4 71.2 106.8
 115 32.6 25.9 38.9



#38
 1-Methylnaphthalene
 Concen: 9.931 ng
 RT: 12.084 min Scan# 1555
 Delta R.T. 0.000 min
 Lab File: BP025073.D
 Acq: 03 Jul 2025 11:02

Tgt Ion:142 Resp: 484403
 Ion Ratio Lower Upper
 142 100
 141 92.7 74.1 111.1
 116 3.5 2.7 4.1

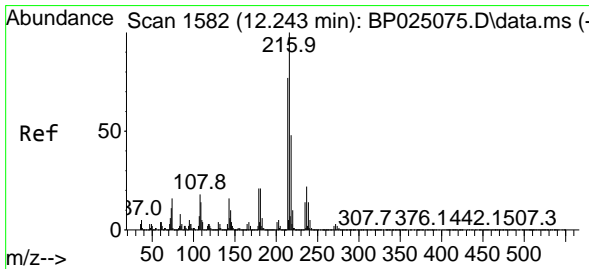
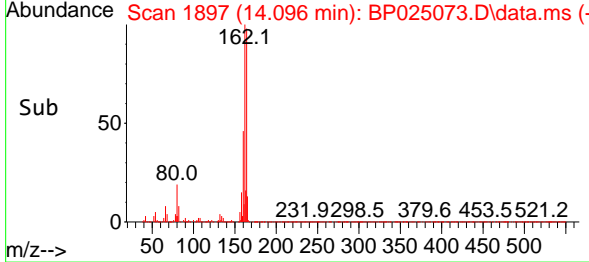
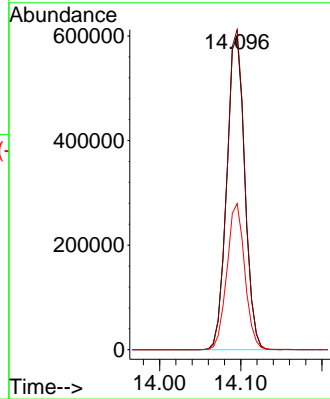
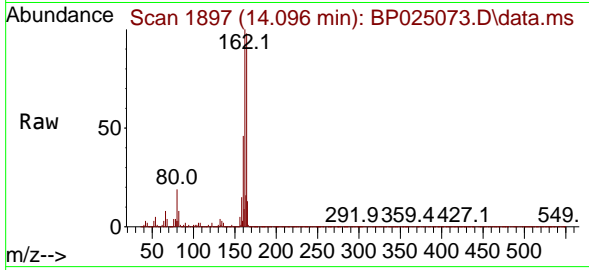




#39
 Acenaphthene-d10
 Concen: 20.000 ng
 RT: 14.096 min Scan# 1897
 Delta R.T. 0.007 min
 Lab File: BP025073.D
 Acq: 03 Jul 2025 11:02

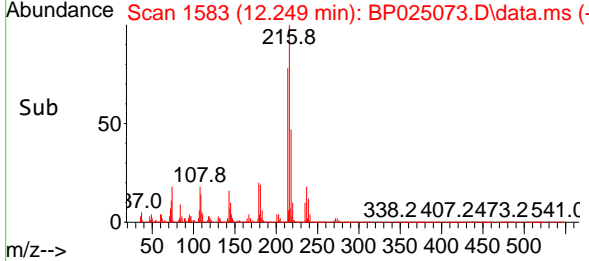
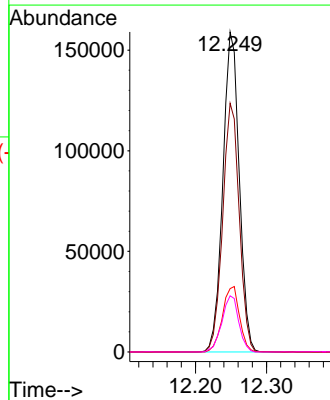
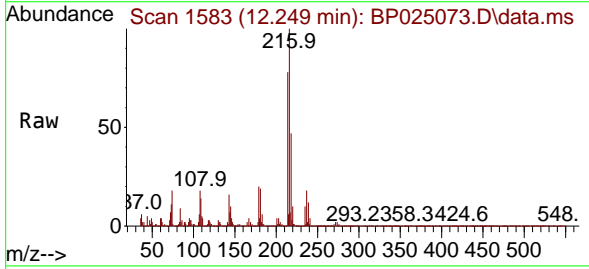
Instrument : BNA_P
 Client Sample Id : SSTDICC010

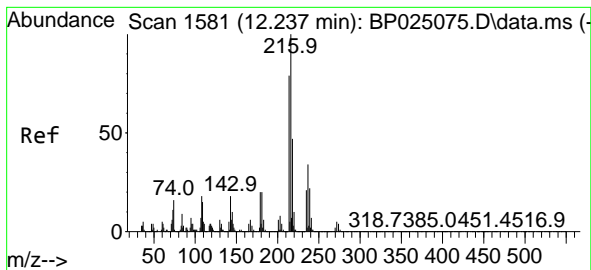
Tgt Ion	Resp	Lower	Upper
164	100		
162	102.0	80.3	120.5
160	46.5	35.9	53.9



#40
 1,2,4,5-Tetrachlorobenzene
 Concen: 9.554 ng
 RT: 12.249 min Scan# 1583
 Delta R.T. 0.006 min
 Lab File: BP025073.D
 Acq: 03 Jul 2025 11:02

Tgt Ion	Resp	Lower	Upper
216	100		
214	78.5	62.4	93.6
179	21.3	16.5	24.7
108	18.1	13.7	20.5

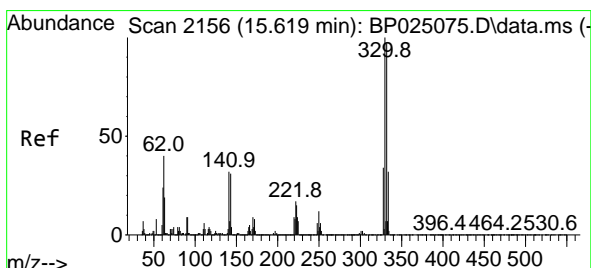
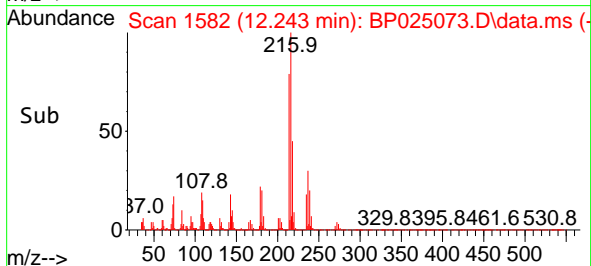
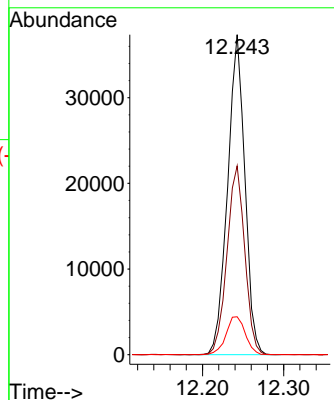
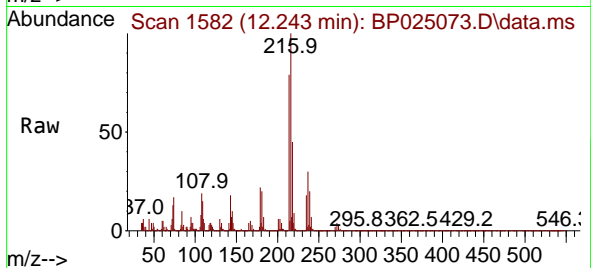




#41
Hexachlorocyclopentadiene
Concen: 7.965 ng
RT: 12.243 min Scan# 11
Delta R.T. 0.006 min
Lab File: BP025073.D
Acq: 03 Jul 2025 11:02

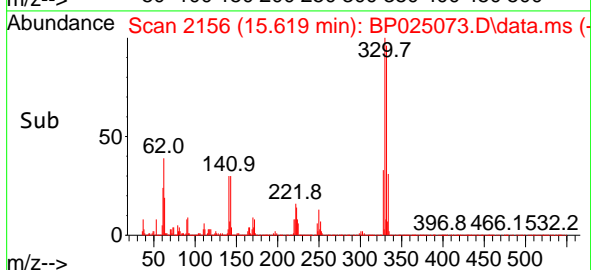
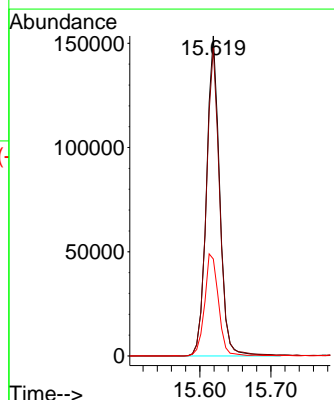
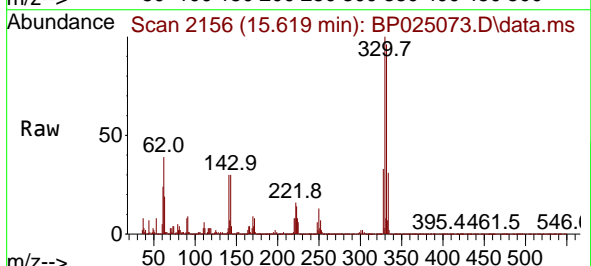
Instrument :
BNA_P
ClientSampleId :
SSTDICC010

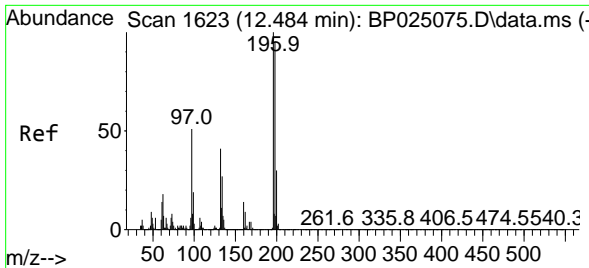
Tgt Ion:237 Resp: 55283
Ion Ratio Lower Upper
237 100
235 59.0 41.6 81.6
272 11.8 0.0 33.6



#42
2,4,6-Tribromophenol
Concen: 18.149 ng
RT: 15.619 min Scan# 2156
Delta R.T. 0.000 min
Lab File: BP025073.D
Acq: 03 Jul 2025 11:02

Tgt Ion:330 Resp: 198235
Ion Ratio Lower Upper
330 100
332 97.6 77.7 116.5
141 33.5 26.0 39.0

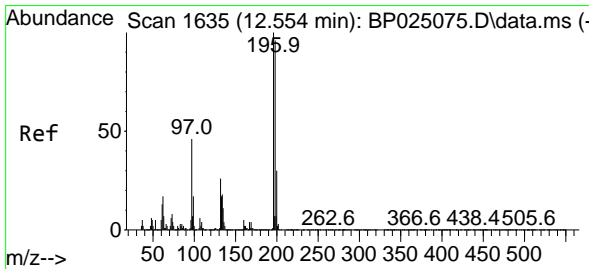
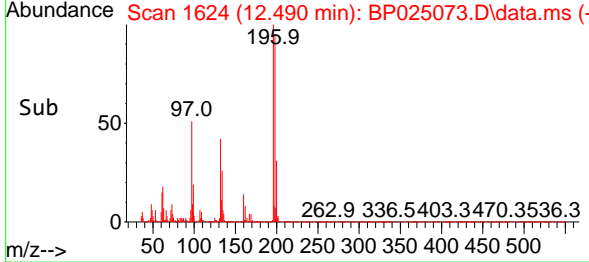
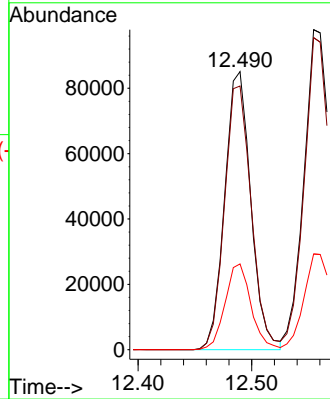
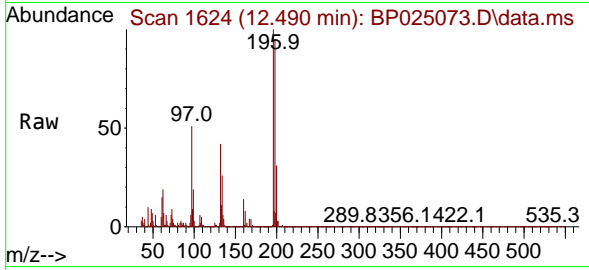




#43
 2,4,6-Trichlorophenol
 Concen: 8.469 ng
 RT: 12.490 min Scan# 1624
 Delta R.T. 0.006 min
 Lab File: BP025073.D
 Acq: 03 Jul 2025 11:02

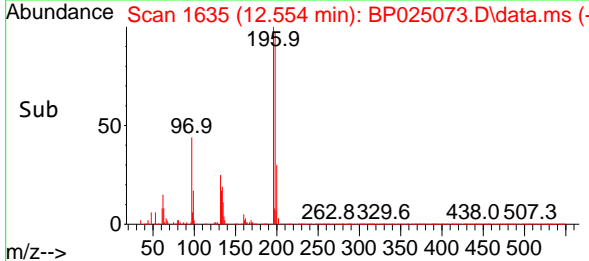
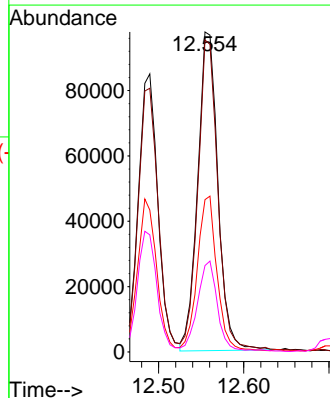
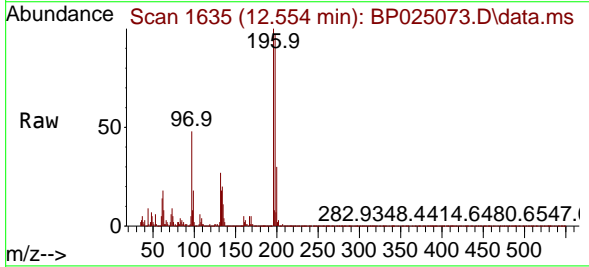
Instrument : BNA_P
 ClientSampleId : SSTDICC010

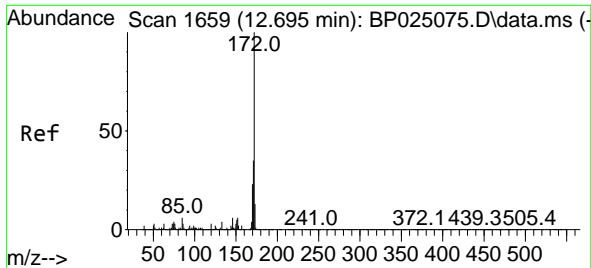
Tgt Ion	Resp	Lower	Upper
196	136269		
198	94.8	76.2	114.2
200	30.9	24.3	36.5



#44
 2,4,5-Trichlorophenol
 Concen: 8.840 ng
 RT: 12.554 min Scan# 1635
 Delta R.T. 0.000 min
 Lab File: BP025073.D
 Acq: 03 Jul 2025 11:02

Tgt Ion	Resp	Lower	Upper
196	161200		
198	97.5	76.6	115.0
97	47.6	36.6	55.0
132	27.0	21.4	32.0



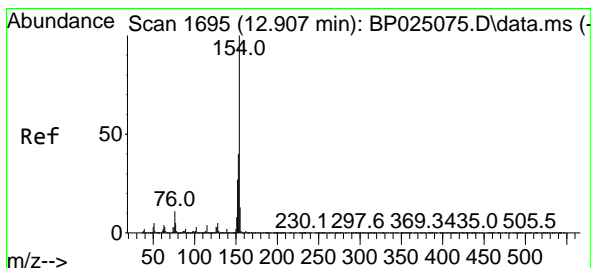
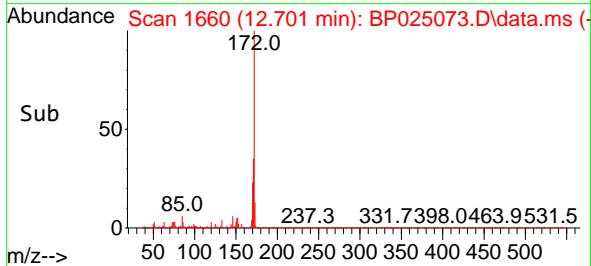
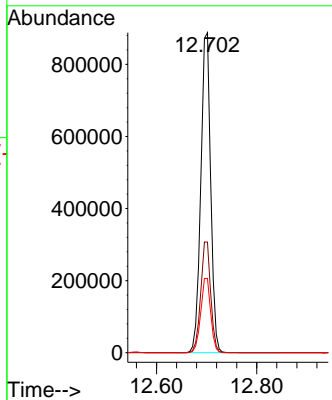
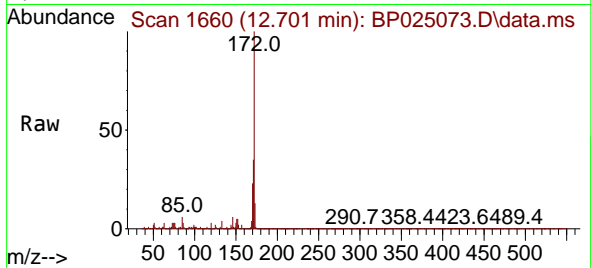


#45
 2-Fluorobiphenyl
 Concen: 20.297 ng
 RT: 12.701 min Scan# 1660
 Delta R.T. 0.006 min
 Lab File: BP025073.D
 Acq: 03 Jul 2025 11:02

Instrument : BNA_P
 ClientSampleId : SSTDICC010

Tgt Ion:172 Resp: 1211432

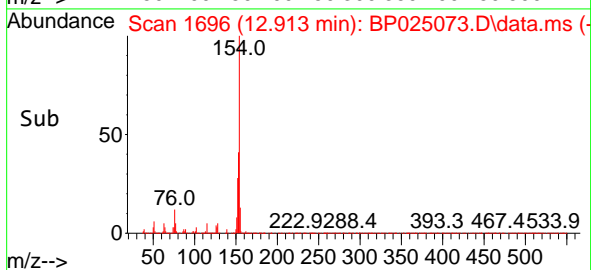
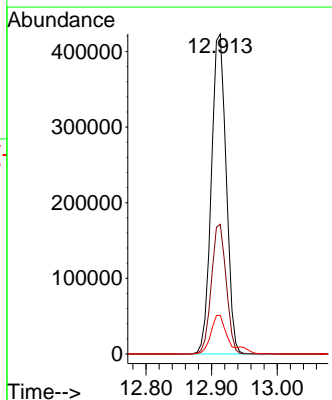
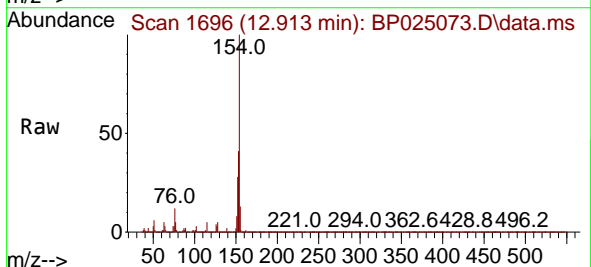
Ion	Ratio	Lower	Upper
172	100		
171	34.6	28.2	42.2
170	23.2	18.7	28.1

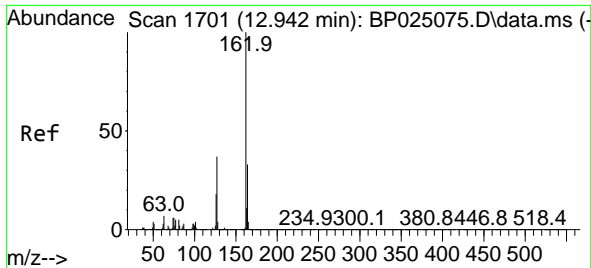


#46
 1,1'-Biphenyl
 Concen: 9.869 ng
 RT: 12.913 min Scan# 1696
 Delta R.T. 0.006 min
 Lab File: BP025073.D
 Acq: 03 Jul 2025 11:02

Tgt Ion:154 Resp: 663919

Ion	Ratio	Lower	Upper
154	100		
153	40.5	20.2	60.2
76	12.1	0.0	31.5

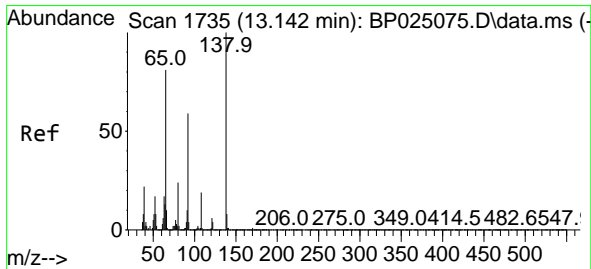
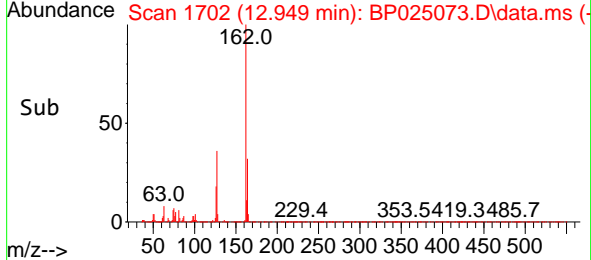
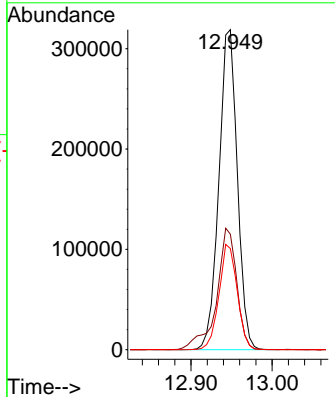
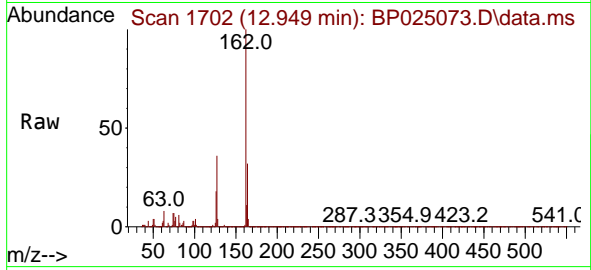




#47
 2-Chloronaphthalene
 Concen: 9.959 ng
 RT: 12.949 min Scan# 1702
 Delta R.T. 0.006 min
 Lab File: BP025073.D
 Acq: 03 Jul 2025 11:02

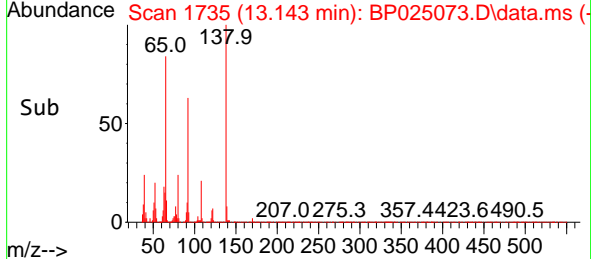
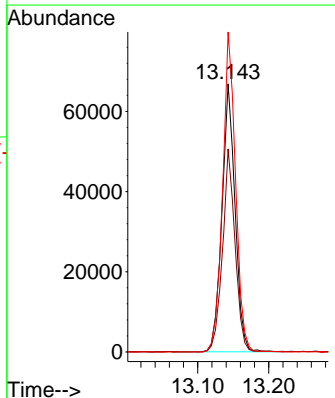
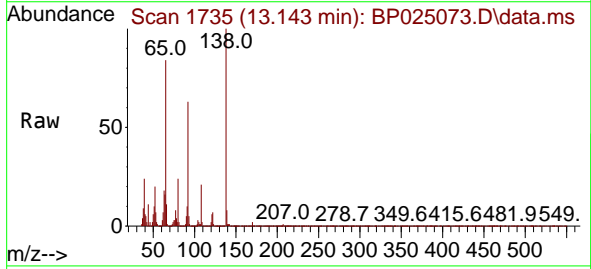
Instrument : BNA_P
 Client Sample Id : SSTDICC010

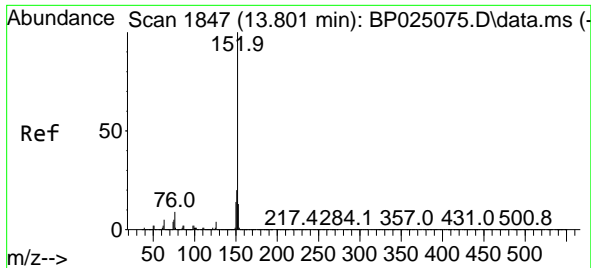
Tgt Ion	Resp	Lower	Upper
162	100		
127	36.1	29.4	44.2
164	31.6	26.4	39.6



#48
 2-Nitroaniline
 Concen: 9.283 ng
 RT: 13.143 min Scan# 1735
 Delta R.T. 0.001 min
 Lab File: BP025073.D
 Acq: 03 Jul 2025 11:02

Tgt Ion	Resp	Lower	Upper
65	100		
92	75.7	58.7	88.1
138	119.3	99.0	148.4



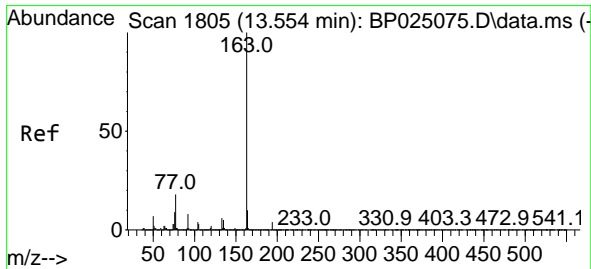
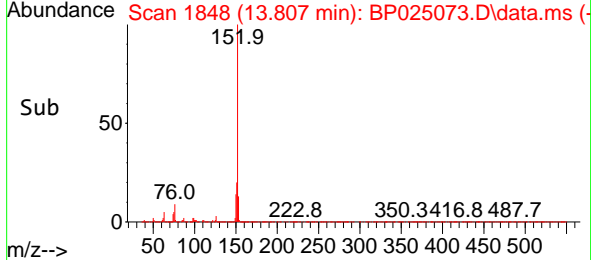
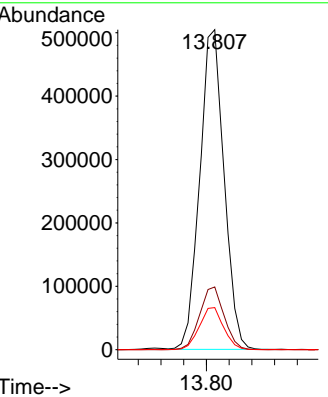
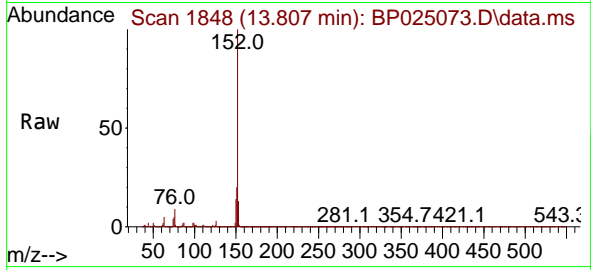


#49
 Acenaphthylene
 Concen: 9.692 ng
 RT: 13.807 min Scan# 1847
 Delta R.T. 0.006 min
 Lab File: BP025073.D
 Acq: 03 Jul 2025 11:02

Instrument : BNA_P
 ClientSampleId : SSTDICC010

Tgt Ion:152 Resp: 750027

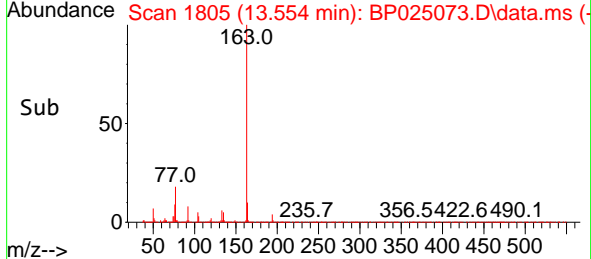
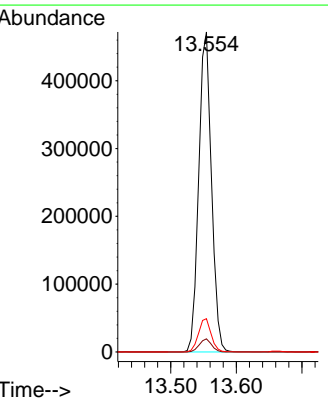
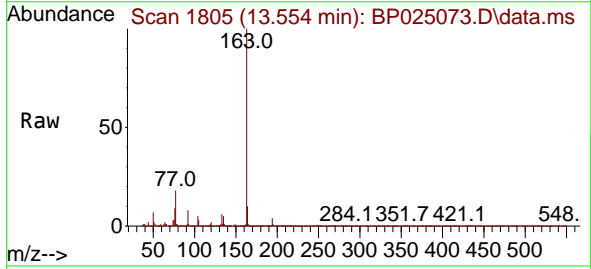
Ion	Ratio	Lower	Upper
152	100		
151	19.6	16.1	24.1
153	13.2	10.7	16.1

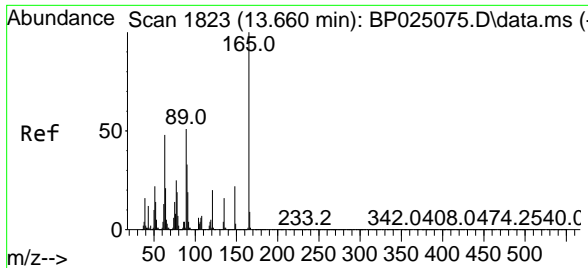


#50
 Dimethylphthalate
 Concen: 9.828 ng
 RT: 13.554 min Scan# 1805
 Delta R.T. 0.000 min
 Lab File: BP025073.D
 Acq: 03 Jul 2025 11:02

Tgt Ion:163 Resp: 636102

Ion	Ratio	Lower	Upper
163	100		
194	4.1	3.4	5.0
164	10.4	8.0	12.0



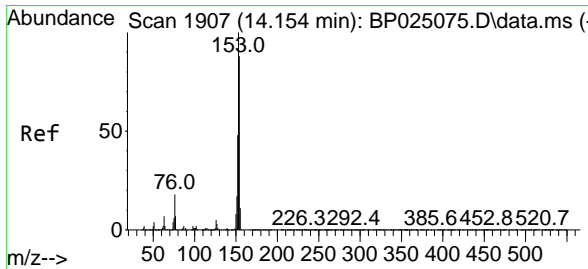
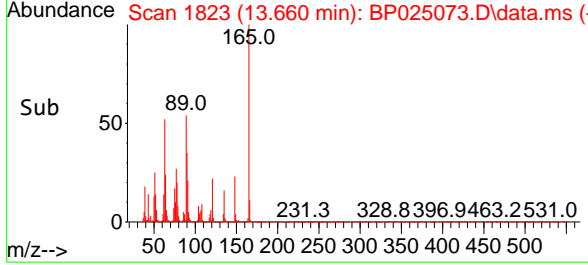
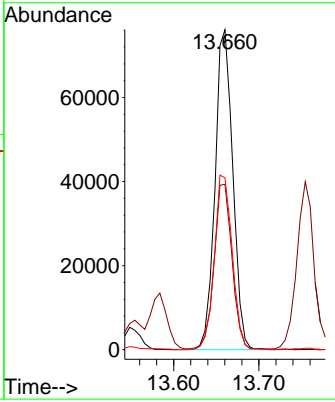
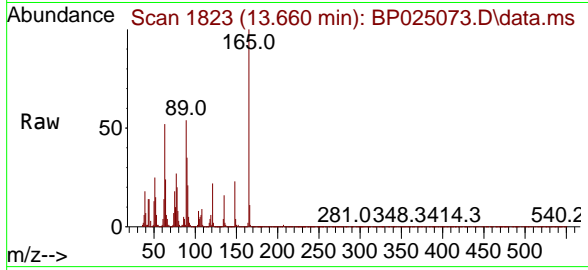


#51
 2,6-Dinitrotoluene
 Concen: 8.728 ng
 RT: 13.660 min Scan# 11
 Delta R.T. 0.000 min
 Lab File: BP025073.D
 Acq: 03 Jul 2025 11:02

Instrument : BNA_P
 Client Sample Id : SSTDICC010

Tgt Ion:165 Resp: 110177

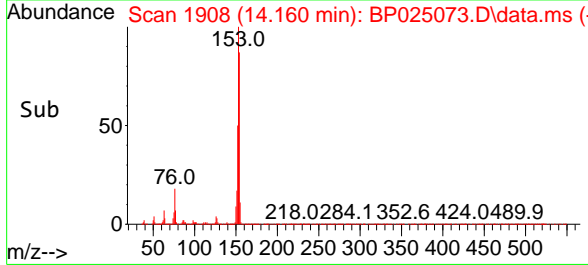
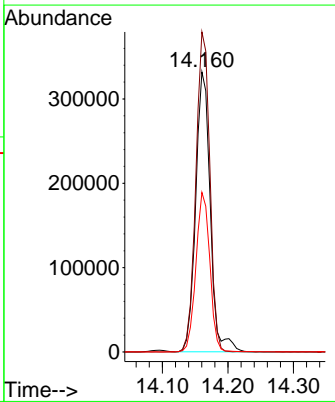
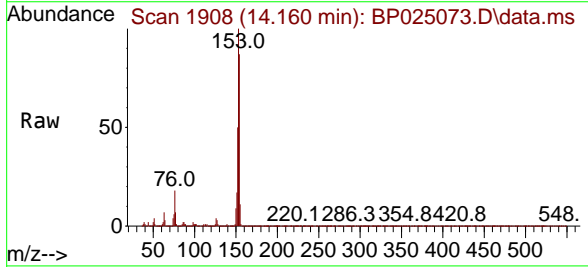
Ion	Ratio	Lower	Upper
165	100		
63	51.6	38.5	57.7
89	53.7	40.6	61.0

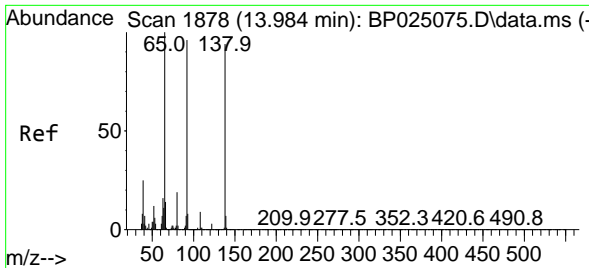


#52
 Acenaphthene
 Concen: 10.281 ng
 RT: 14.160 min Scan# 1908
 Delta R.T. 0.006 min
 Lab File: BP025073.D
 Acq: 03 Jul 2025 11:02

Tgt Ion:154 Resp: 512792

Ion	Ratio	Lower	Upper
154	100		
153	114.3	90.6	136.0
152	57.0	43.8	65.8

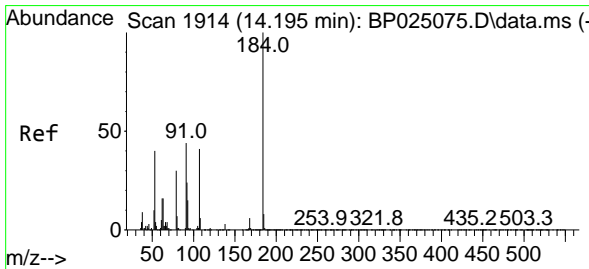
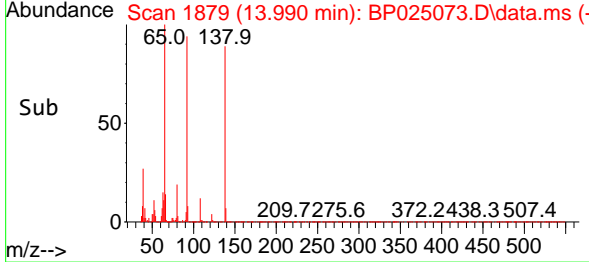
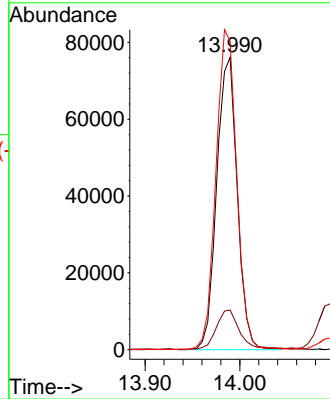
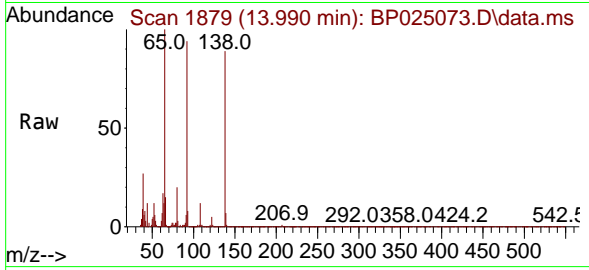




#53
 3-Nitroaniline
 Concen: 8.481 ng
 RT: 13.990 min Scan# 11
 Delta R.T. 0.006 min
 Lab File: BP025073.D
 Acq: 03 Jul 2025 11:02

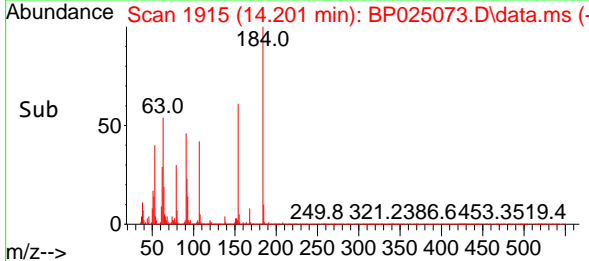
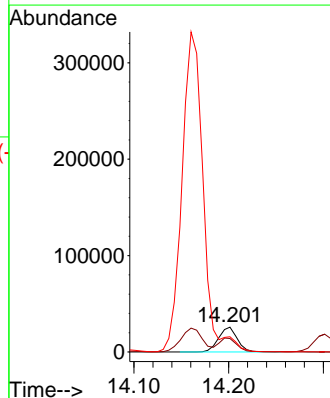
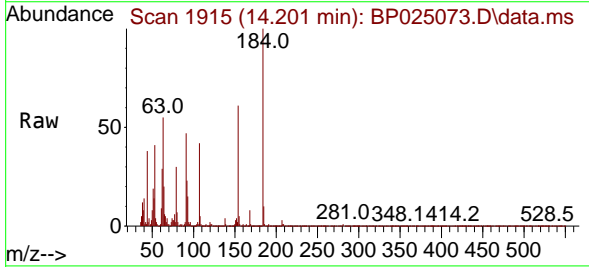
Instrument :
 BNA_P
 ClientSampleId :
 SSTDICC010

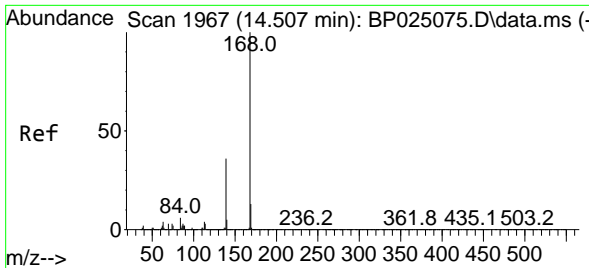
Tgt Ion:138 Resp: 114723
 Ion Ratio Lower Upper
 138 100
 108 13.6 7.8 11.8#
 92 105.5 81.0 121.4



#54
 2,4-Dinitrophenol
 Concen: 10.737 ng
 RT: 14.201 min Scan# 1915
 Delta R.T. 0.006 min
 Lab File: BP025073.D
 Acq: 03 Jul 2025 11:02

Tgt Ion:184 Resp: 35399
 Ion Ratio Lower Upper
 184 100
 63 54.7 47.4 71.0
 154 61.2 47.8 71.8

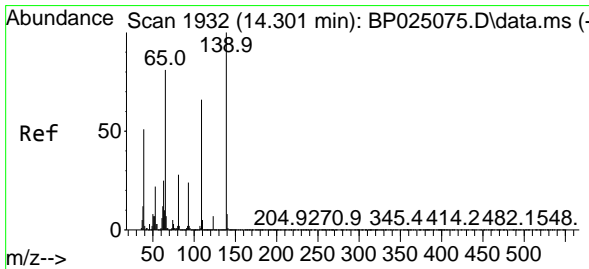
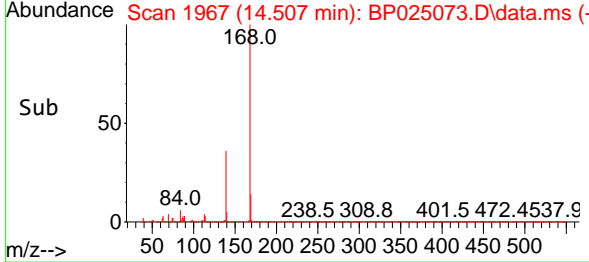
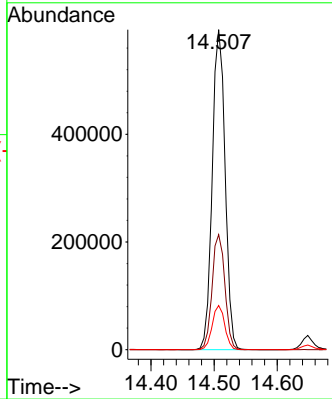
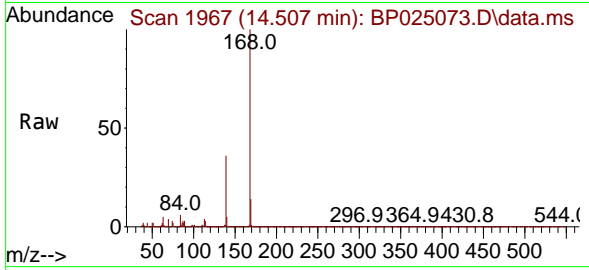




#55
 Dibenzofuran
 Concen: 10.186 ng
 RT: 14.507 min Scan# 1967
 Delta R.T. 0.000 min
 Lab File: BP025073.D
 Acq: 03 Jul 2025 11:02

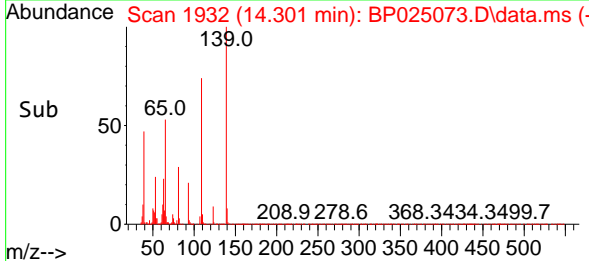
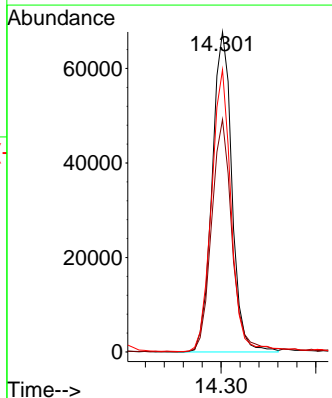
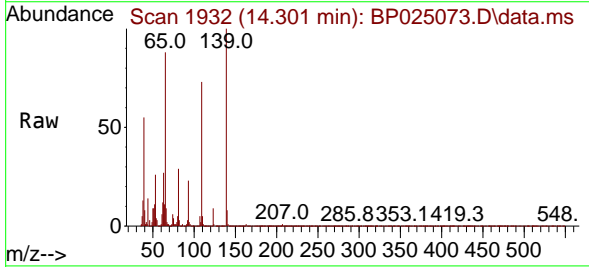
Instrument : BNA_P
 Client Sample Id : SSTDICC010

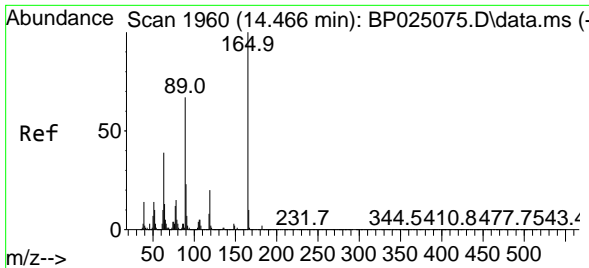
Tgt Ion	Resp	Lower	Upper
168	100		
139	36.0	28.6	43.0
169	13.8	10.7	16.1



#56
 4-Nitrophenol
 Concen: 7.853 ng
 RT: 14.301 min Scan# 1932
 Delta R.T. 0.000 min
 Lab File: BP025073.D
 Acq: 03 Jul 2025 11:02

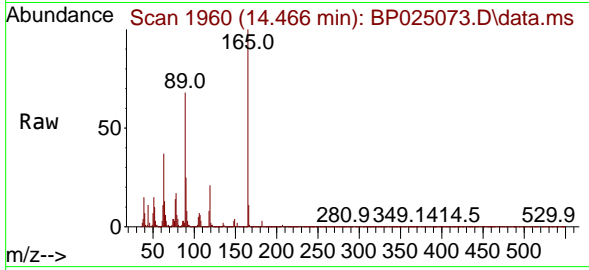
Tgt Ion	Resp	Lower	Upper
139	100		
109	72.6	45.9	85.9
65	88.2	61.4	101.4





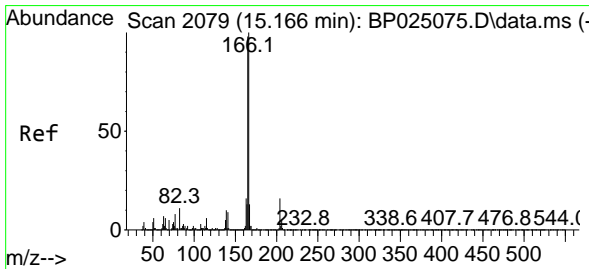
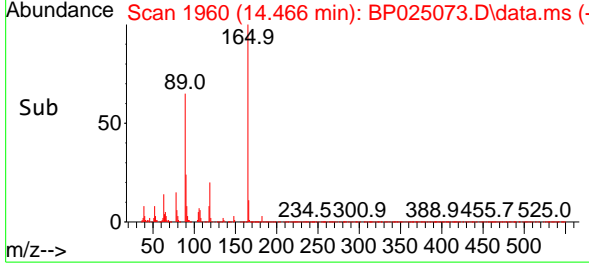
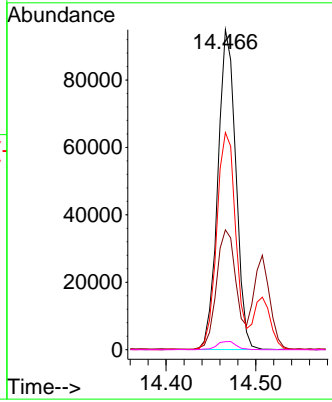
#57
 2,4-Dinitrotoluene
 Concen: 9.365 ng
 RT: 14.466 min Scan# 1960
 Delta R.T. 0.000 min
 Lab File: BP025073.D
 Acq: 03 Jul 2025 11:02

Instrument : BNA_P
 ClientSampleId : SSTDICC010

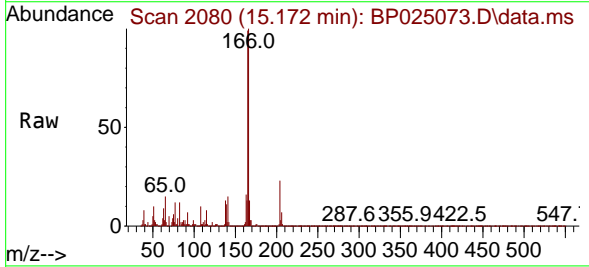


Tgt Ion:165 Resp: 131885

Ion	Ratio	Lower	Upper
165	100		
63	37.5	31.0	46.4
89	67.9	53.4	80.0
182	2.5	2.0	3.0

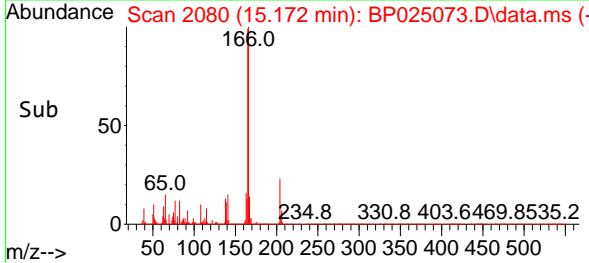
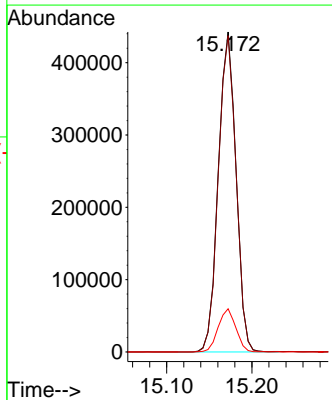


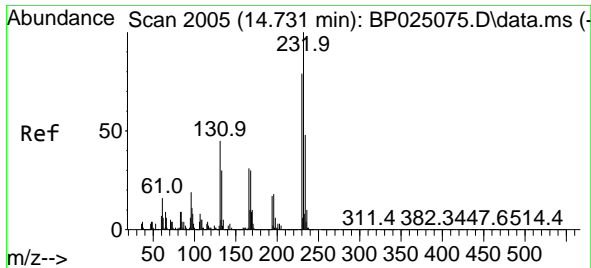
#58
 Fluorene
 Concen: 10.047 ng
 RT: 15.172 min Scan# 2080
 Delta R.T. 0.006 min
 Lab File: BP025073.D
 Acq: 03 Jul 2025 11:02



Tgt Ion:166 Resp: 639683

Ion	Ratio	Lower	Upper
166	100		
165	98.9	78.6	117.8
167	13.5	10.7	16.1





#59
 2,3,4,6-Tetrachlorophenol
 Concen: 8.890 ng
 RT: 14.731 min Scan# 2005
 Delta R.T. 0.000 min
 Lab File: BP025073.D
 Acq: 03 Jul 2025 11:02

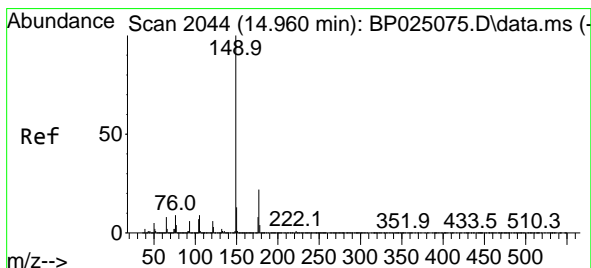
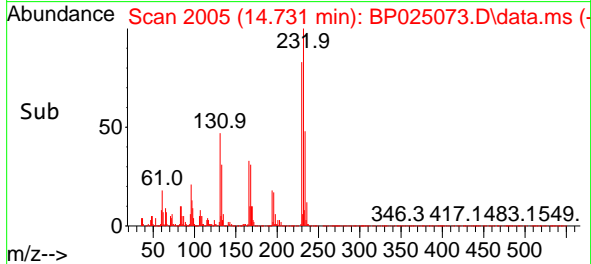
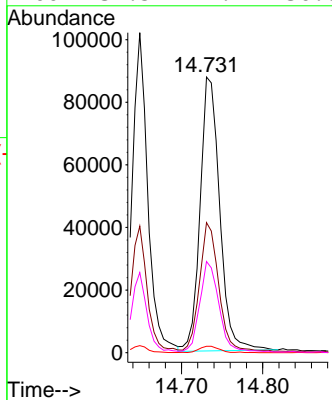
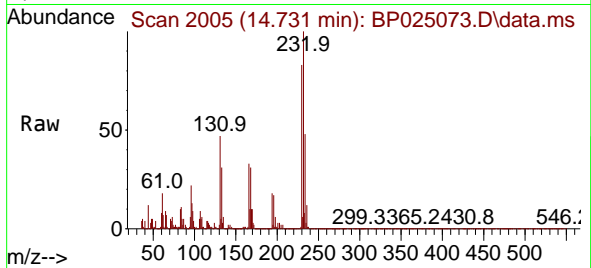
Instrument :

BNA_P

ClientSampleId :

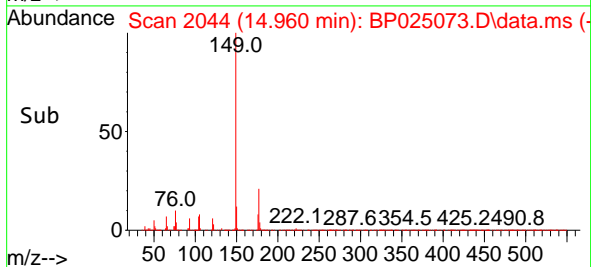
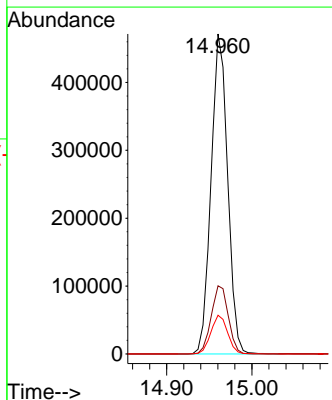
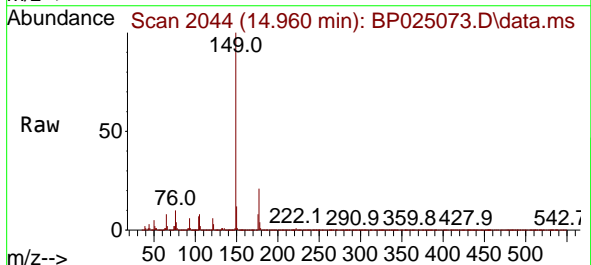
SSTDICC010

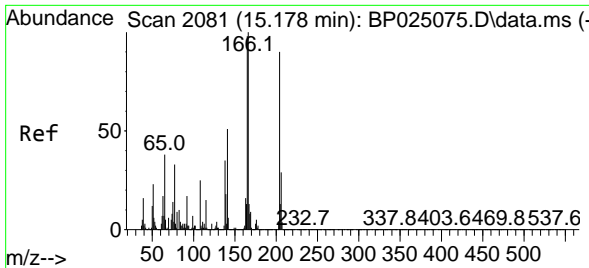
Tgt Ion:232 Resp: 146800
 Ion Ratio Lower Upper
 232 100
 131 46.4 35.7 53.5
 130 2.5 1.8 2.6
 166 32.5 24.4 36.6



#60
 Diethylphthalate
 Concen: 9.788 ng
 RT: 14.960 min Scan# 2044
 Delta R.T. 0.000 min
 Lab File: BP025073.D
 Acq: 03 Jul 2025 11:02

Tgt Ion:149 Resp: 636288
 Ion Ratio Lower Upper
 149 100
 177 21.3 17.8 26.8
 150 12.1 10.2 15.2



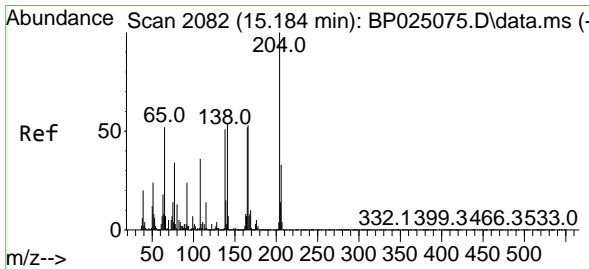
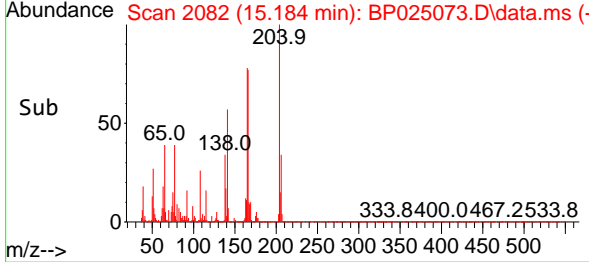
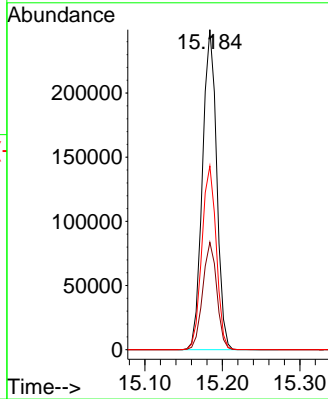
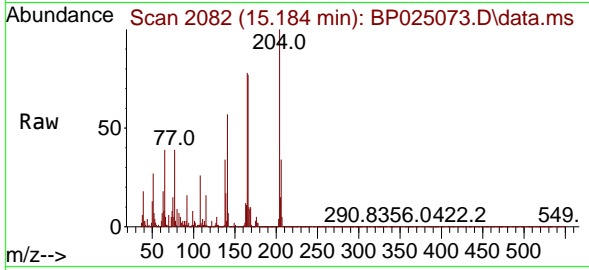


#61
 4-Chlorophenyl-phenylether
 Concen: 10.084 ng
 RT: 15.184 min Scan# 2082
 Delta R.T. 0.006 min
 Lab File: BP025073.D
 Acq: 03 Jul 2025 11:02

Instrument : BNA_P
 ClientSampleId : SSTDICC010

Tgt Ion:204 Resp: 317737

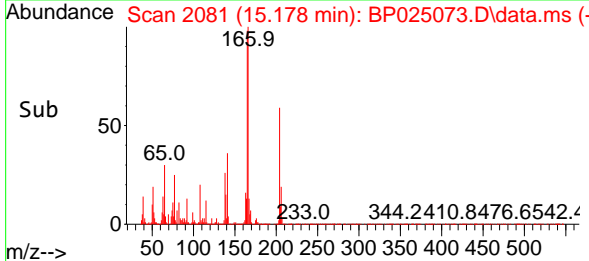
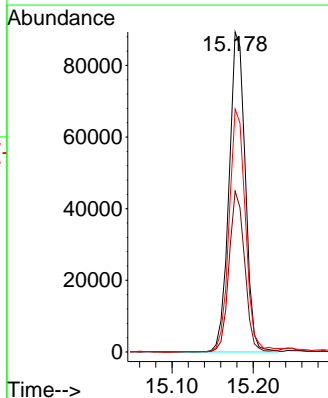
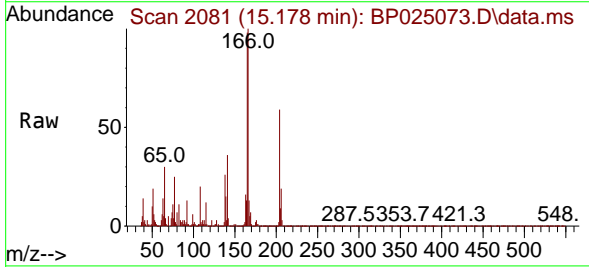
Ion	Ratio	Lower	Upper
204	100		
206	33.6	25.8	38.6
141	57.4	45.1	67.7

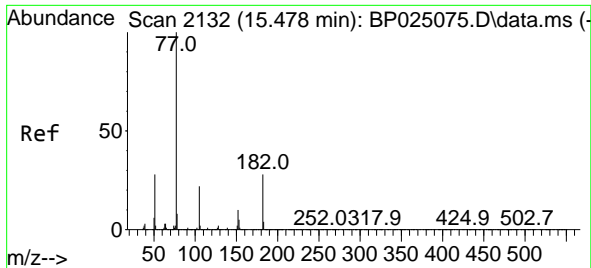


#62
 4-Nitroaniline
 Concen: 8.706 ng
 RT: 15.178 min Scan# 2081
 Delta R.T. -0.006 min
 Lab File: BP025073.D
 Acq: 03 Jul 2025 11:02

Tgt Ion:138 Resp: 123493

Ion	Ratio	Lower	Upper
138	100		
92	50.2	26.0	66.0
108	75.9	50.0	90.0





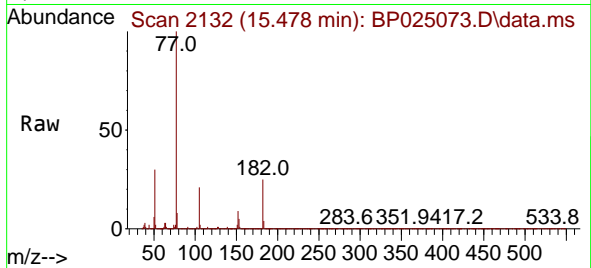
#63
 Azobenzene
 Concen: 10.181 ng
 RT: 15.478 min Scan# 2132
 Delta R.T. 0.000 min
 Lab File: BP025073.D
 Acq: 03 Jul 2025 11:02

Instrument :

BNA_P

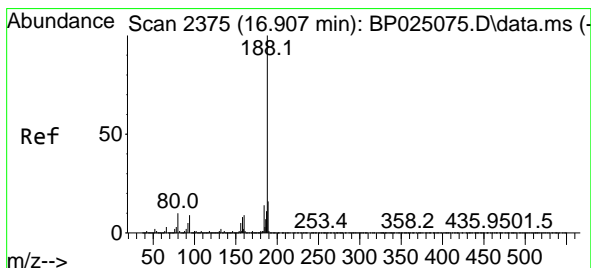
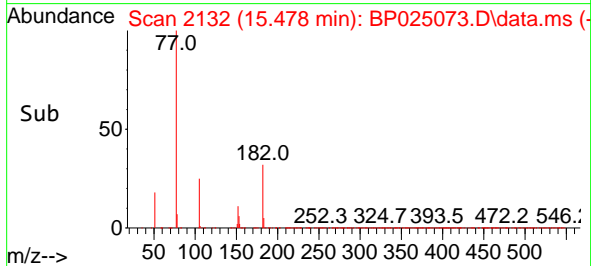
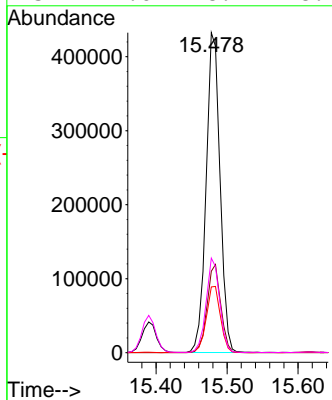
ClientSampleId :

SSTDICC010



Tgt Ion: 77 Resp: 589360

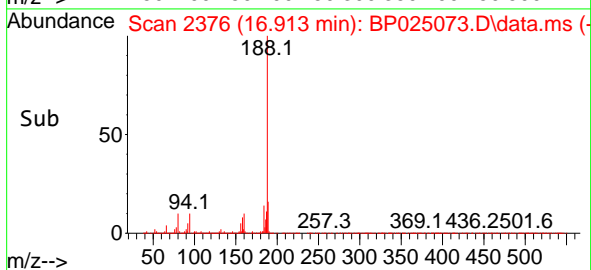
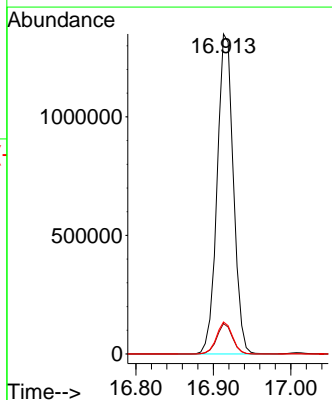
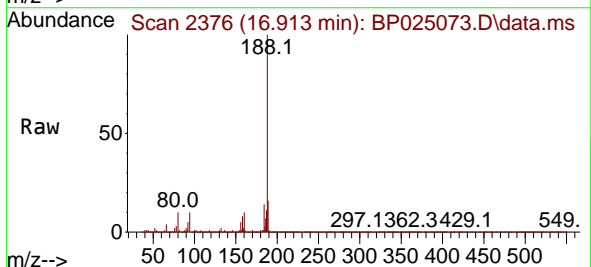
Ion	Ratio	Lower	Upper
77	100		
182	25.5	7.7	47.7
105	20.6	1.9	41.9
51	29.6	8.2	48.2

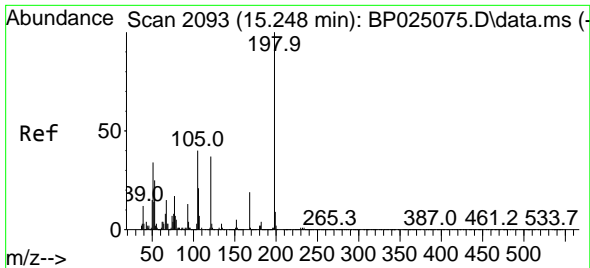


#64
 Phenanthrene-d10
 Concen: 20.000 ng
 RT: 16.913 min Scan# 2376
 Delta R.T. 0.006 min
 Lab File: BP025073.D
 Acq: 03 Jul 2025 11:02

Tgt Ion: 188 Resp: 1970410

Ion	Ratio	Lower	Upper
188	100		
94	9.5	7.3	10.9
80	10.0	7.8	11.6

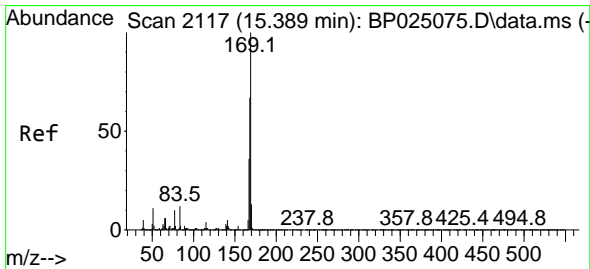
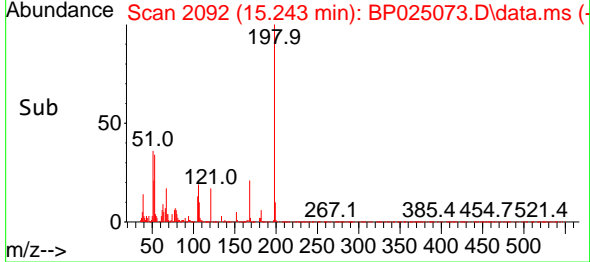
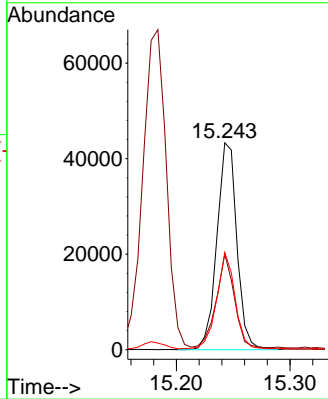
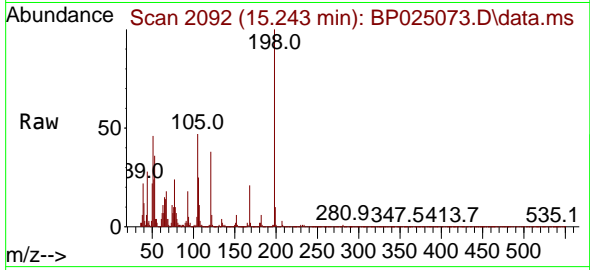




#65
 4,6-Dinitro-2-methylphenol
 Concen: 10.800 ng
 RT: 15.243 min Scan# 2092
 Delta R.T. -0.005 min
 Lab File: BP025073.D
 Acq: 03 Jul 2025 11:02

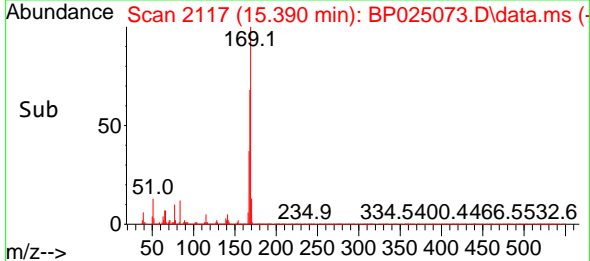
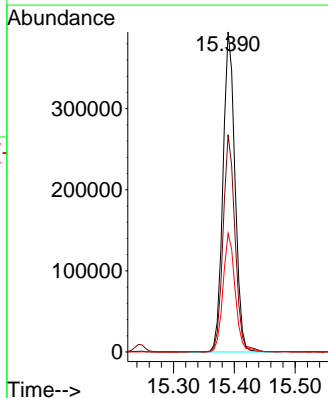
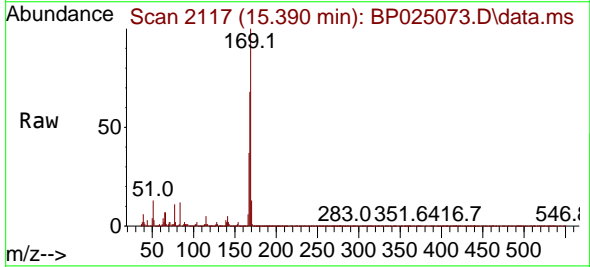
Instrument : BNA_P
 ClientSampleId : SSTDICC010

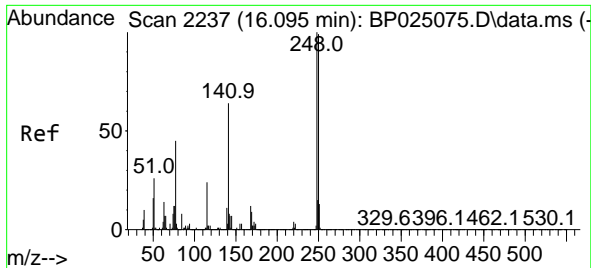
Tgt Ion	Resp	Ion Ratio	Lower	Upper
198	52978	100		
51		46.1	16.8	56.8
105		46.9	20.8	60.8



#66
 n-Nitrosodiphenylamine
 Concen: 9.573 ng
 RT: 15.390 min Scan# 2117
 Delta R.T. 0.000 min
 Lab File: BP025073.D
 Acq: 03 Jul 2025 11:02

Tgt Ion	Resp	Ion Ratio	Lower	Upper
169	539820	100		
168		67.9	54.1	81.1
167		37.0	29.0	43.6

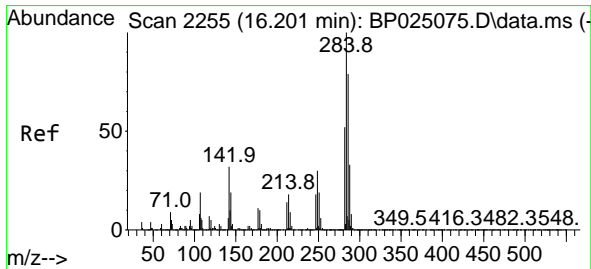
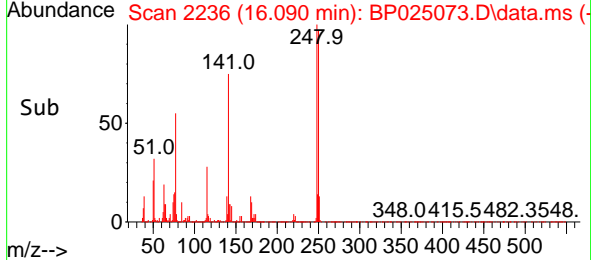
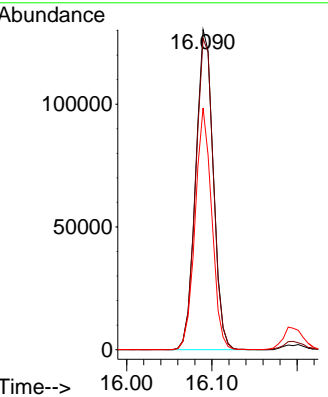
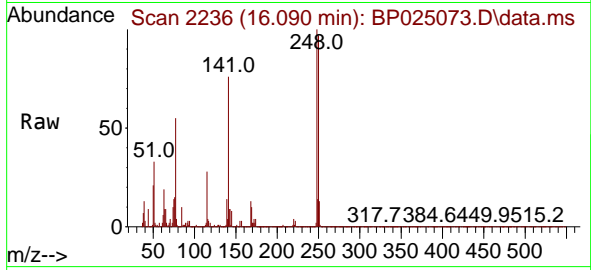




#67
 4-Bromophenyl-phenylether
 Concen: 9.256 ng
 RT: 16.090 min Scan# 21
 Delta R.T. -0.006 min
 Lab File: BP025073.D
 Acq: 03 Jul 2025 11:02

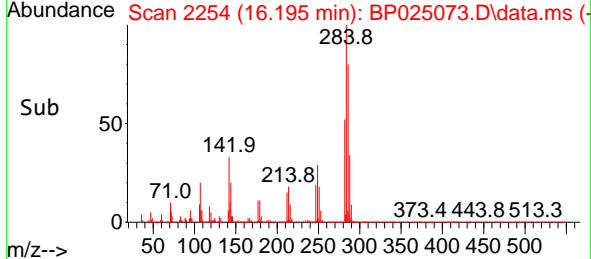
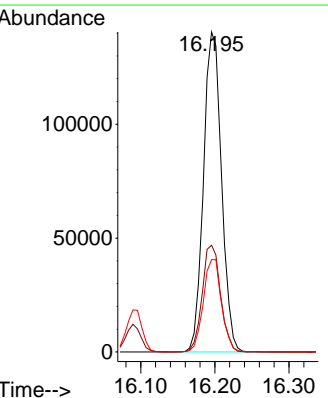
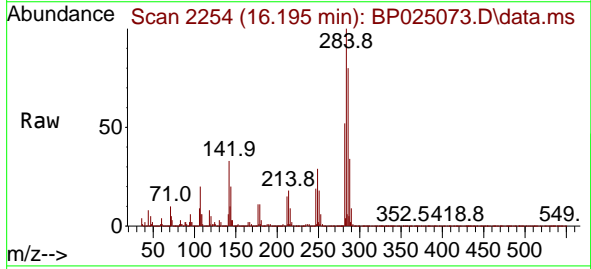
Instrument :
 BNA_P
 ClientSampleId :
 SSTDICC010

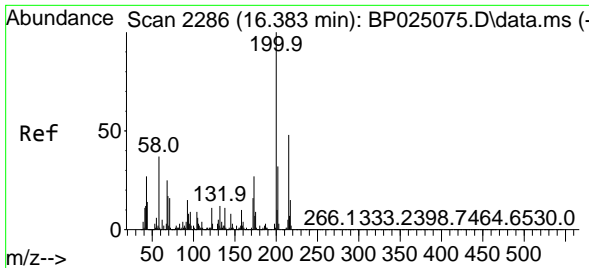
Tgt Ion	Resp	Lower	Upper
248	186736		
248	100		
250	97.2	79.4	119.2
141	75.5	51.4	77.0



#68
 Hexachlorobenzene
 Concen: 9.604 ng
 RT: 16.195 min Scan# 2254
 Delta R.T. -0.006 min
 Lab File: BP025073.D
 Acq: 03 Jul 2025 11:02

Tgt Ion	Resp	Lower	Upper
284	236838		
284	100		
142	33.3	25.9	38.9
249	28.9	23.8	35.8



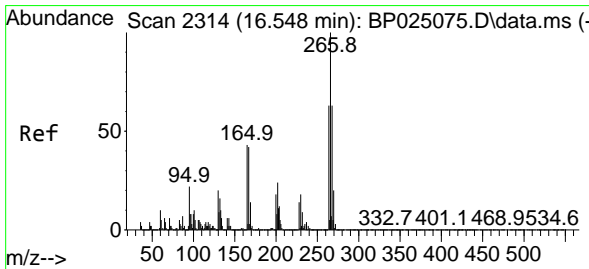
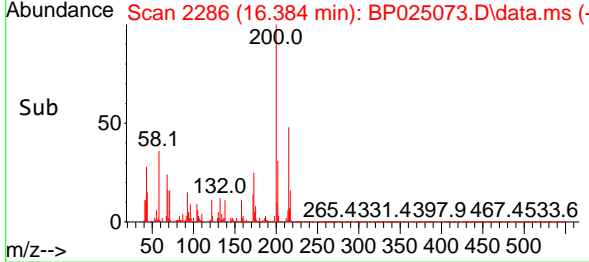
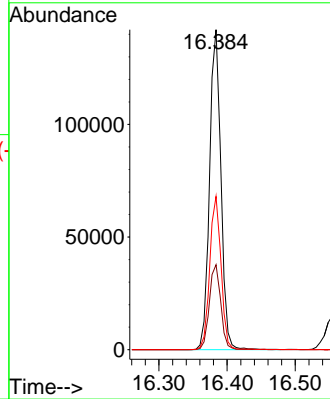
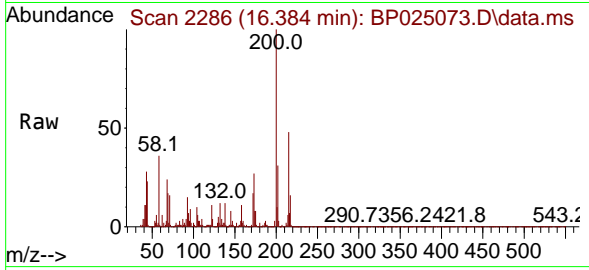


#69
 Atrazine
 Concen: 9.954 ng
 RT: 16.384 min Scan# 211
 Delta R.T. 0.000 min
 Lab File: BP025073.D
 Acq: 03 Jul 2025 11:02

Instrument :
 BNA_P
ClientSampleId :
 SSTDICC010

Tgt Ion:200 Resp: 164479

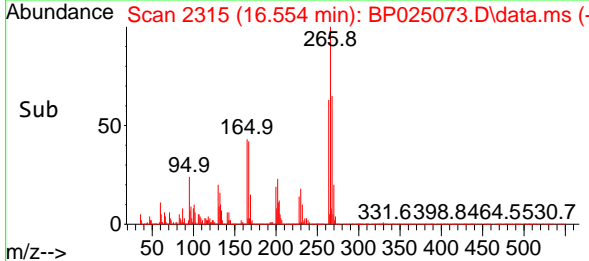
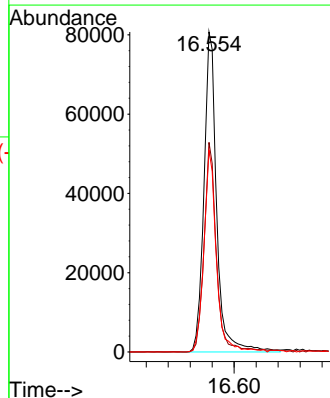
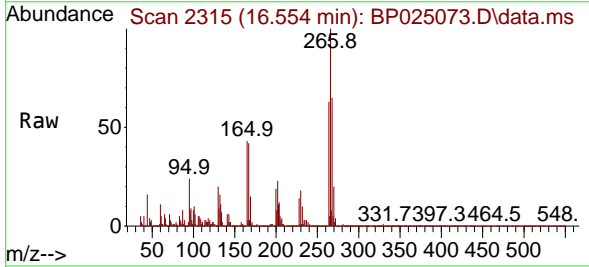
Ion	Ratio	Lower	Upper
200	100		
173	26.6	6.6	46.6
215	47.9	28.0	68.0

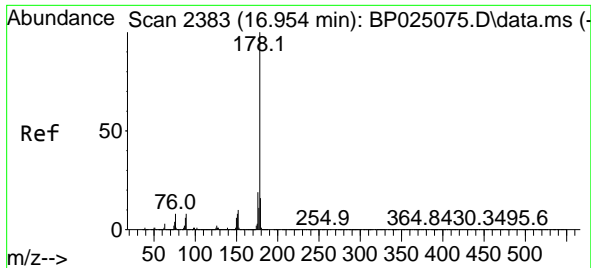


#70
 Pentachlorophenol
 Concen: 7.774 ng
 RT: 16.554 min Scan# 2315
 Delta R.T. 0.006 min
 Lab File: BP025073.D
 Acq: 03 Jul 2025 11:02

Tgt Ion:266 Resp: 129459

Ion	Ratio	Lower	Upper
266	100		
268	65.5	50.4	75.6
264	63.0	50.2	75.2



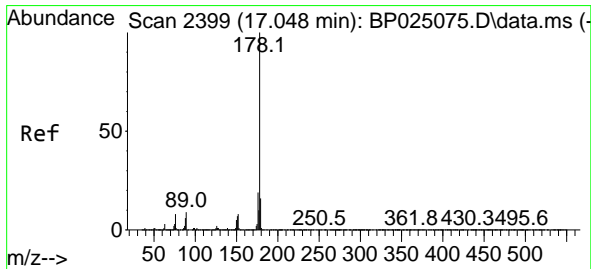
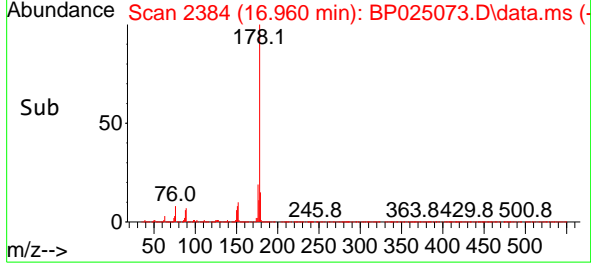
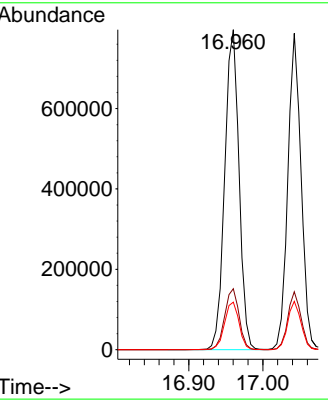
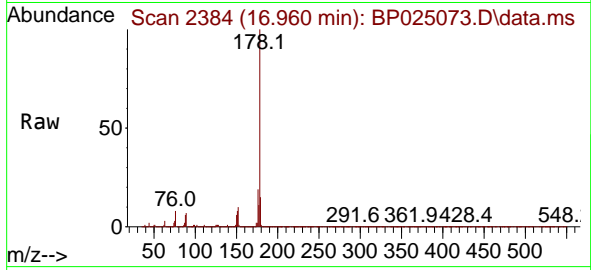


#71
 Phenanthrene
 Concen: 10.146 ng
 RT: 16.960 min Scan# 21
 Delta R.T. 0.006 min
 Lab File: BP025073.D
 Acq: 03 Jul 2025 11:02

Instrument : BNA_P
 Client Sample Id : SSTDICC010

Tgt Ion:178 Resp: 1068228

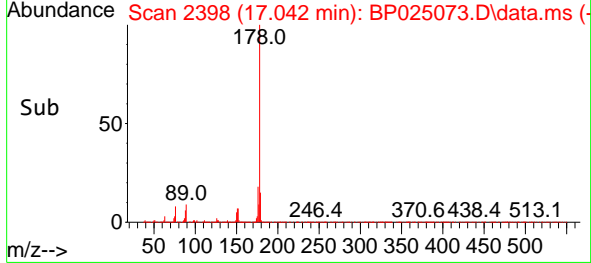
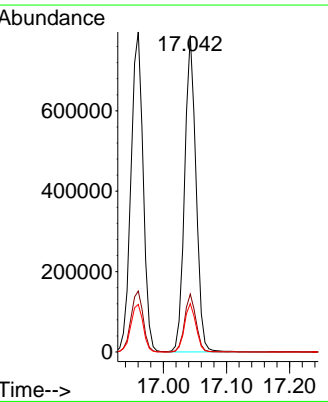
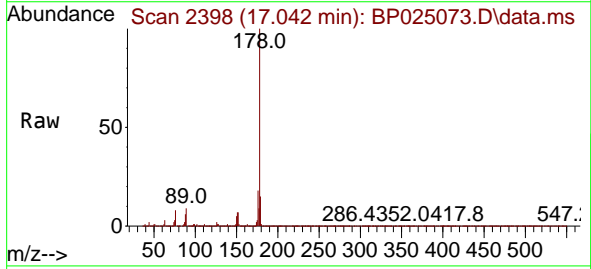
Ion	Ratio	Lower	Upper
178	100		
176	19.0	15.4	23.2
179	14.8	12.6	19.0

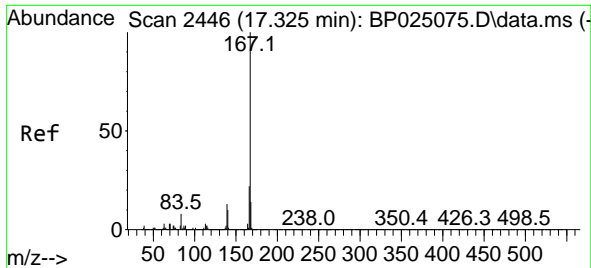


#72
 Anthracene
 Concen: 9.710 ng
 RT: 17.042 min Scan# 2398
 Delta R.T. -0.006 min
 Lab File: BP025073.D
 Acq: 03 Jul 2025 11:02

Tgt Ion:178 Resp: 980773

Ion	Ratio	Lower	Upper
178	100		
176	18.3	15.0	22.6
179	15.3	12.5	18.7

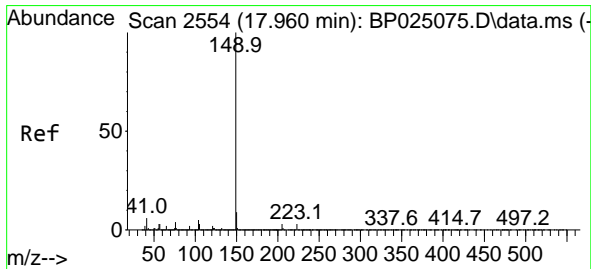
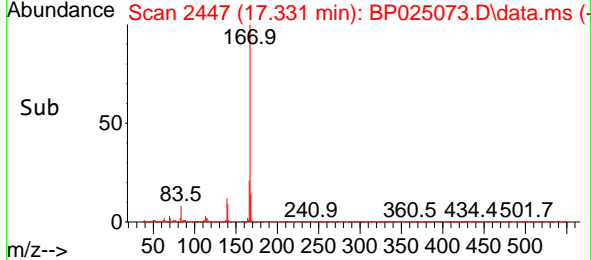
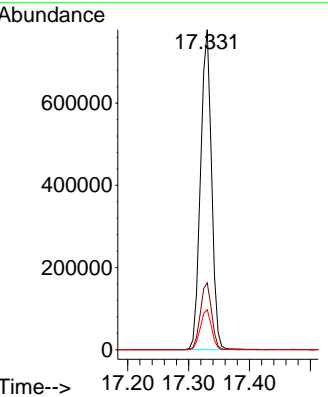
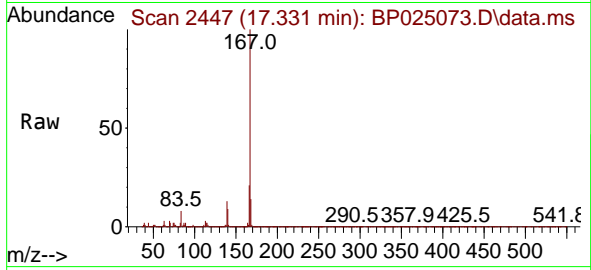




#73
 Carbazole
 Concen: 9.917 ng
 RT: 17.331 min Scan# 2447
 Delta R.T. 0.006 min
 Lab File: BP025073.D
 Acq: 03 Jul 2025 11:02

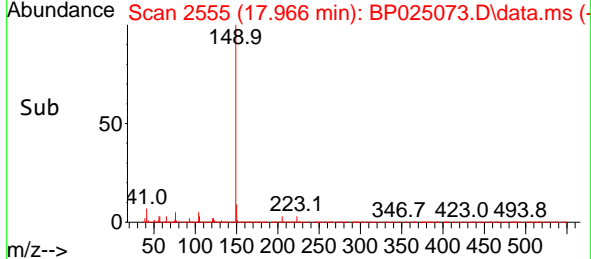
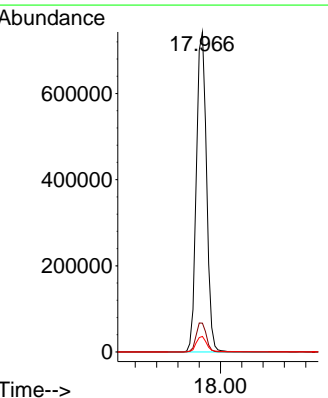
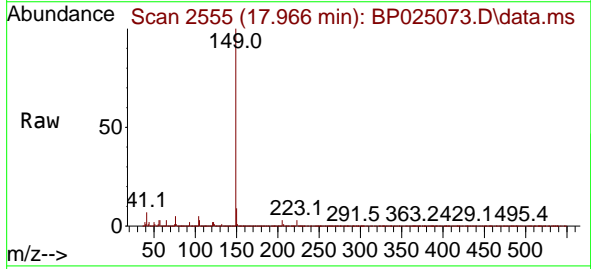
Instrument : BNA_P
 Client Sample Id : SSTDICC010

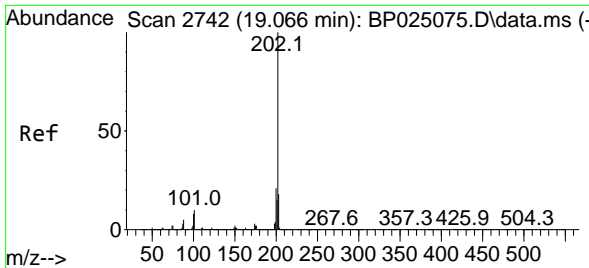
Tgt Ion	Resp	Lower	Upper
167	979377		
166	20.9	17.4	26.0
139	12.5	10.4	15.6



#74
 Di-n-butylphthalate
 Concen: 8.907 ng
 RT: 17.966 min Scan# 2555
 Delta R.T. 0.006 min
 Lab File: BP025073.D
 Acq: 03 Jul 2025 11:02

Tgt Ion	Resp	Lower	Upper
149	979540		
150	9.0	7.3	10.9
104	4.9	3.8	5.6



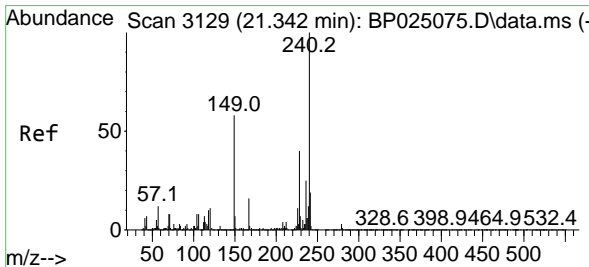
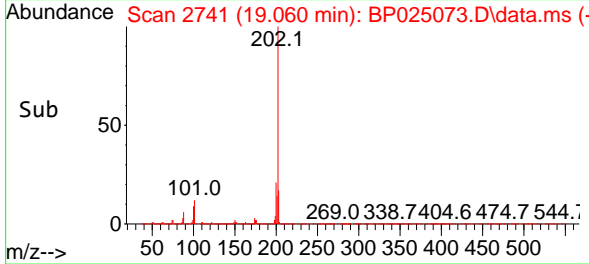
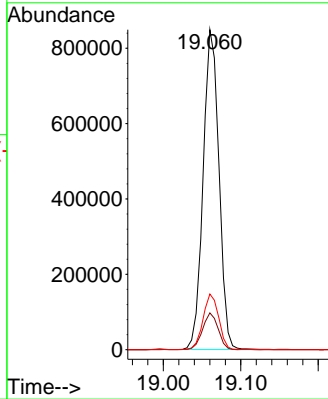
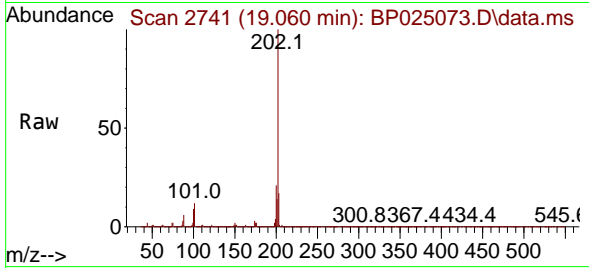


#75
 Fluoranthene
 Concen: 9.781 ng
 RT: 19.060 min Scan# 21
 Delta R.T. -0.006 min
 Lab File: BP025073.D
 Acq: 03 Jul 2025 11:02

Instrument :
 BNA_P
 ClientSampleId :
 SSTDICC010

Tgt Ion: 202 Resp: 1203752

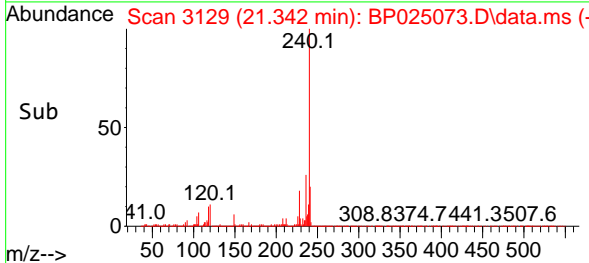
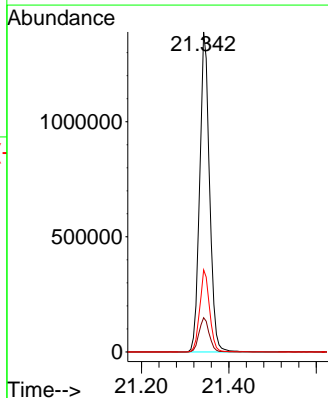
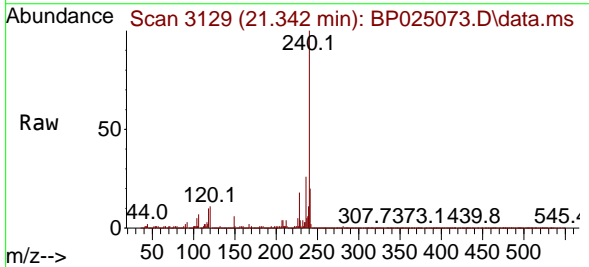
Ion	Ratio	Lower	Upper
202	100		
101	11.5	0.0	30.4
203	17.4	0.0	37.6

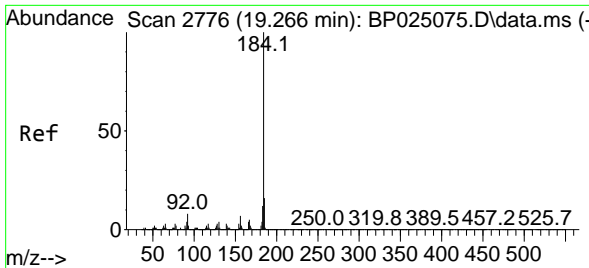


#76
 Chrysene-d12
 Concen: 20.000 ng
 RT: 21.342 min Scan# 3129
 Delta R.T. 0.000 min
 Lab File: BP025073.D
 Acq: 03 Jul 2025 11:02

Tgt Ion: 240 Resp: 2172955

Ion	Ratio	Lower	Upper
240	100		
120	10.7	9.0	13.4
236	25.7	20.3	30.5



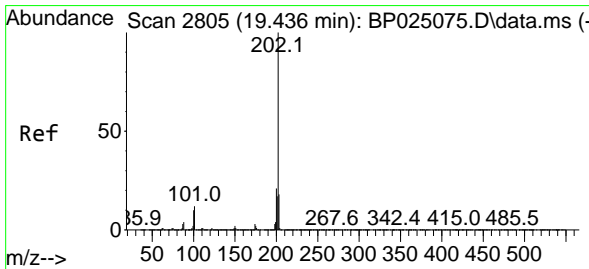
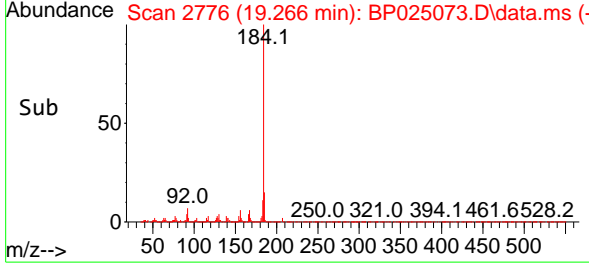
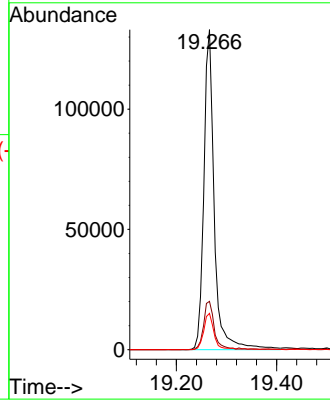
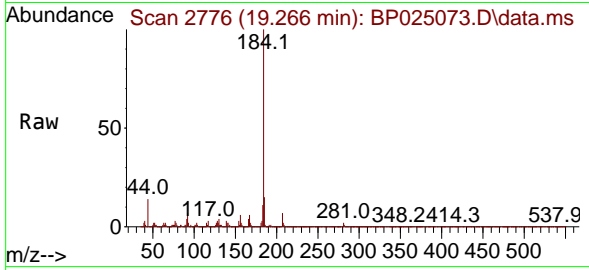


#77
 Benzidine
 Concen: 5.003 ng
 RT: 19.266 min Scan# 21
 Delta R.T. -0.000 min
 Lab File: BP025073.D
 Acq: 03 Jul 2025 11:02

Instrument :
 BNA_P
 ClientSampleId :
 SSTDICC010

Tgt Ion:184 Resp: 192008

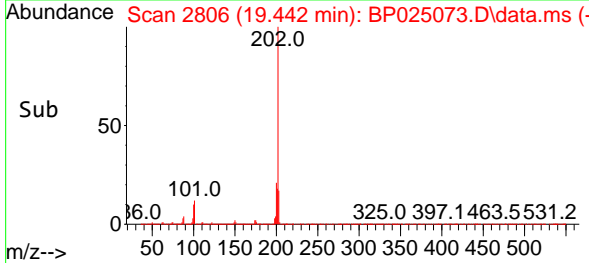
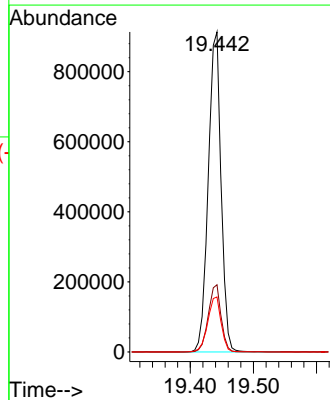
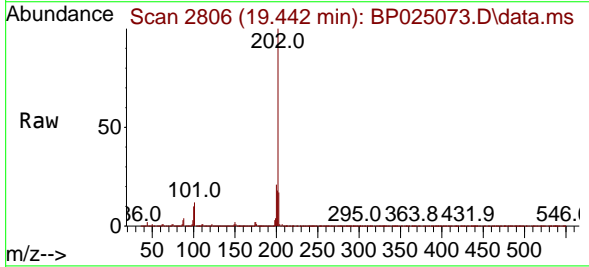
Ion	Ratio	Lower	Upper
184	100		
185	15.1	12.6	18.8
183	11.4	9.4	14.2

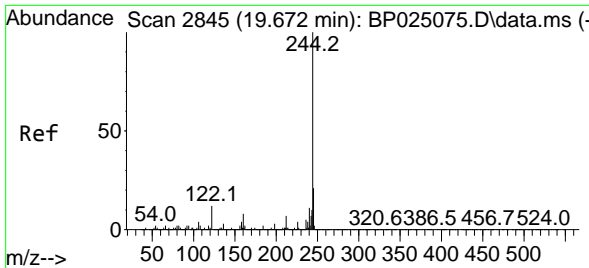


#78
 Pyrene
 Concen: 9.559 ng
 RT: 19.442 min Scan# 2806
 Delta R.T. 0.006 min
 Lab File: BP025073.D
 Acq: 03 Jul 2025 11:02

Tgt Ion:202 Resp: 1286495

Ion	Ratio	Lower	Upper
202	100		
200	21.0	17.1	25.7
203	17.2	14.1	21.1





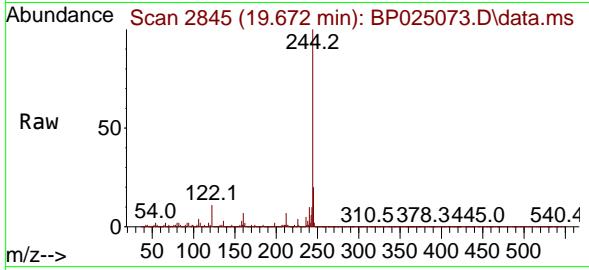
#79
 Terphenyl-d14
 Concen: 20.207 ng
 RT: 19.672 min Scan# 2845
 Delta R.T. 0.000 min
 Lab File: BP025073.D
 Acq: 03 Jul 2025 11:02

Instrument :

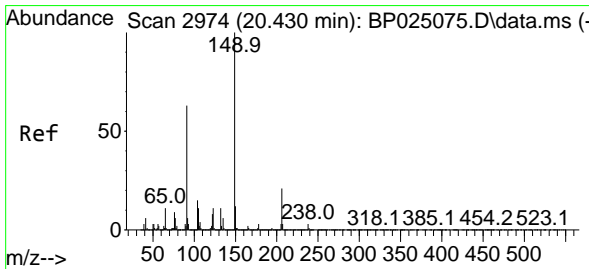
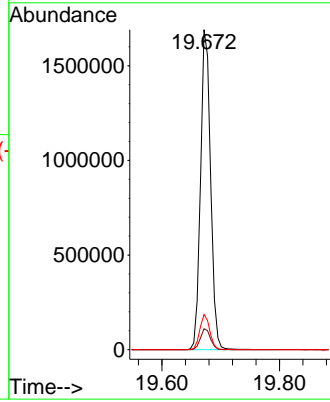
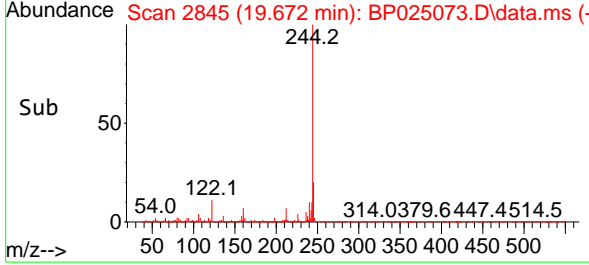
BNA_P

Client Sample Id :

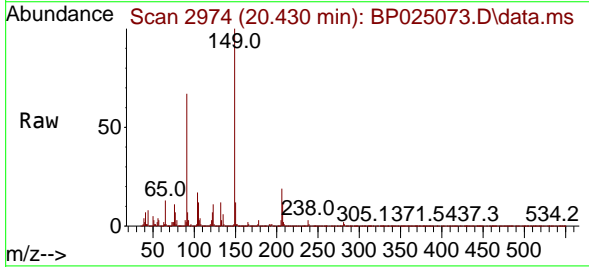
SSTDICC010



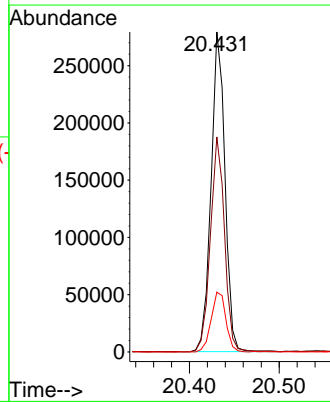
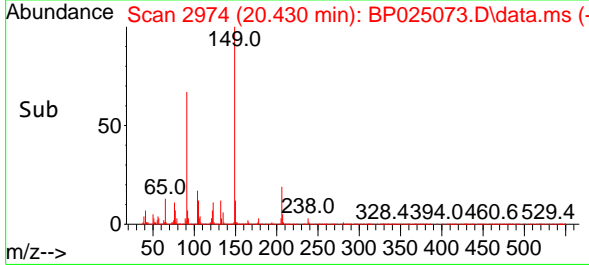
Tgt Ion:244 Resp: 1997838
 Ion Ratio Lower Upper
 244 100
 212 6.5 5.9 8.9
 122 11.0 9.4 14.2

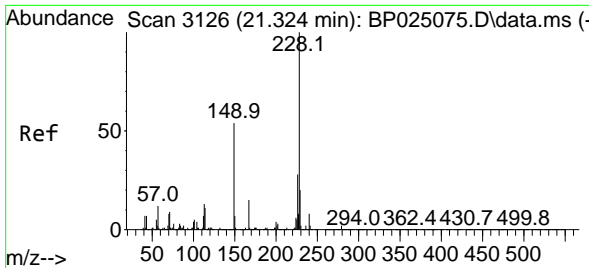


#80
 Butylbenzylphthalate
 Concen: 9.024 ng
 RT: 20.430 min Scan# 2974
 Delta R.T. 0.000 min
 Lab File: BP025073.D
 Acq: 03 Jul 2025 11:02



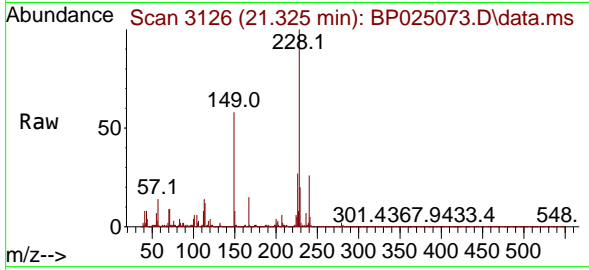
Tgt Ion:149 Resp: 300028
 Ion Ratio Lower Upper
 149 100
 91 67.2 50.6 76.0
 206 18.7 17.2 25.8



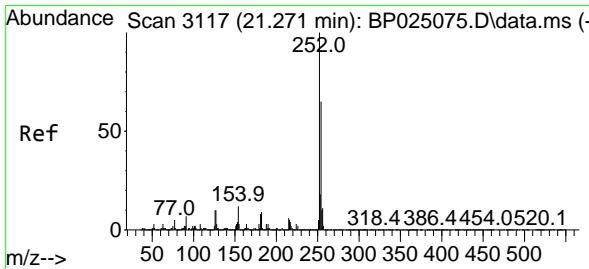
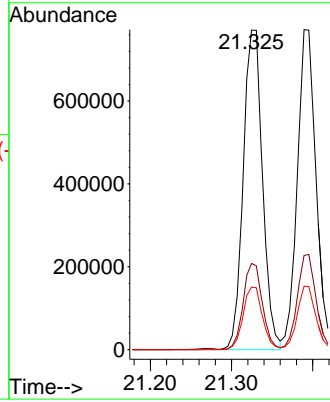
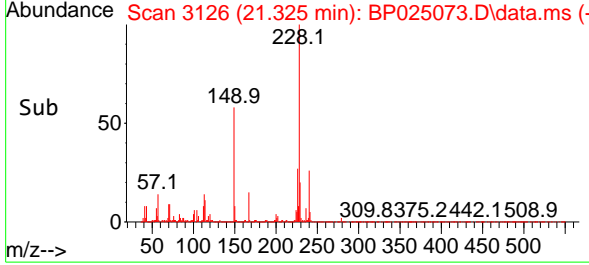


#81
 Benzo(a)anthracene
 Concen: 9.691 ng
 RT: 21.325 min Scan# 3126
 Delta R.T. 0.000 min
 Lab File: BP025073.D
 Acq: 03 Jul 2025 11:02

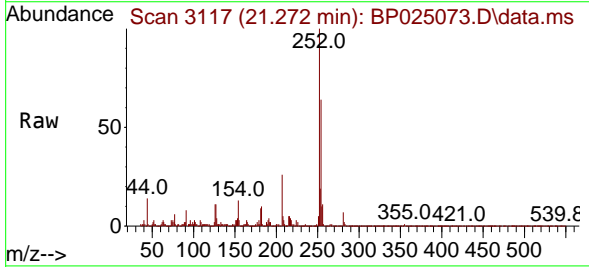
Instrument : BNA_P
 ClientSampleId : SSTDICC010



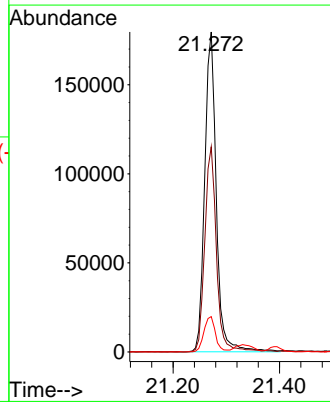
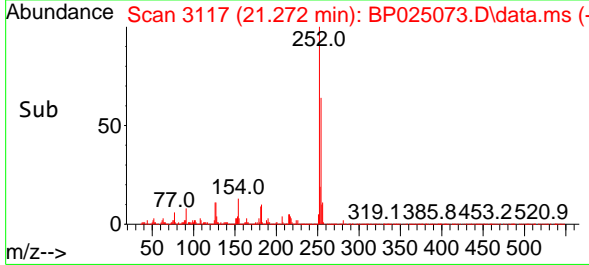
Tgt Ion:228 Resp: 1276106
 Ion Ratio Lower Upper
 228 100
 226 27.0 22.1 33.1
 229 19.6 16.0 24.0

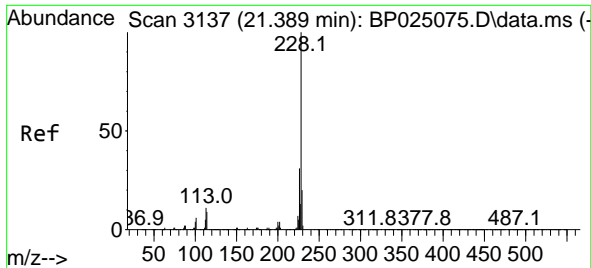


#82
 3,3'-Dichlorobenzidine
 Concen: 6.834 ng
 RT: 21.272 min Scan# 3117
 Delta R.T. 0.000 min
 Lab File: BP025073.D
 Acq: 03 Jul 2025 11:02



Tgt Ion:252 Resp: 270931
 Ion Ratio Lower Upper
 252 100
 254 64.1 51.9 77.9
 126 11.0 8.1 12.1



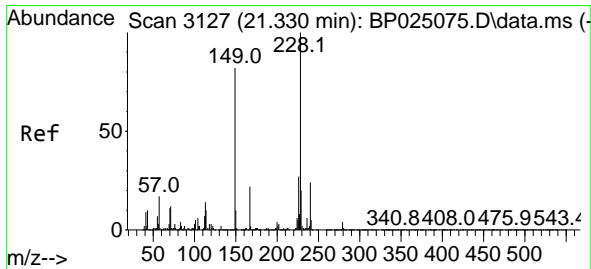
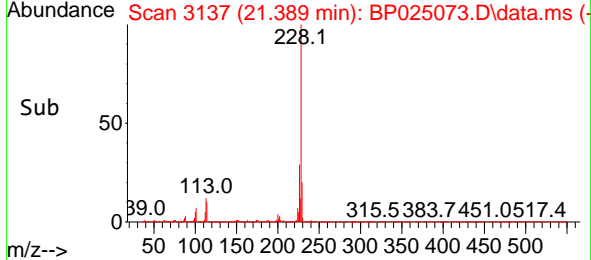
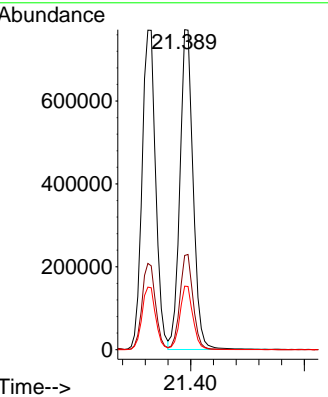
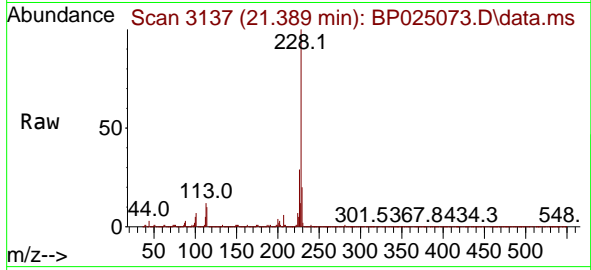


#83
 Chrysene
 Concen: 9.832 ng
 RT: 21.389 min Scan# 3117
 Delta R.T. 0.000 min
 Lab File: BP025073.D
 Acq: 03 Jul 2025 11:02

Instrument : BNA_P
 ClientSampleId : SSTDICC010

Tgt Ion:228 Resp: 1246003

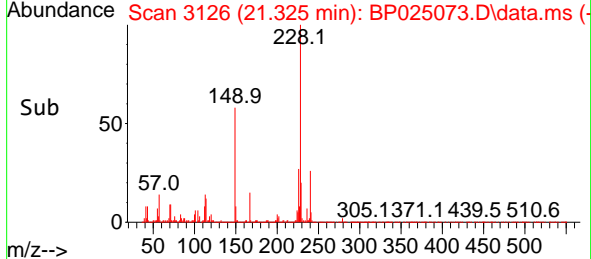
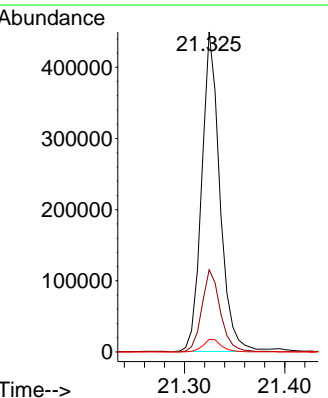
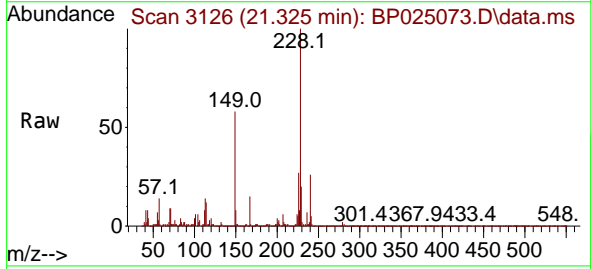
Ion	Ratio	Lower	Upper
228	100		
226	29.5	24.4	36.6
229	19.9	16.0	24.0

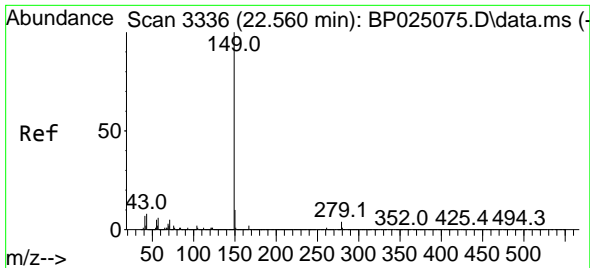


#84
 Bis(2-ethylhexyl)phthalate
 Concen: 7.999 ng
 RT: 21.325 min Scan# 3126
 Delta R.T. -0.006 min
 Lab File: BP025073.D
 Acq: 03 Jul 2025 11:02

Tgt Ion:149 Resp: 564998

Ion	Ratio	Lower	Upper
149	100		
167	25.7	21.9	32.9
279	3.9	3.5	5.3

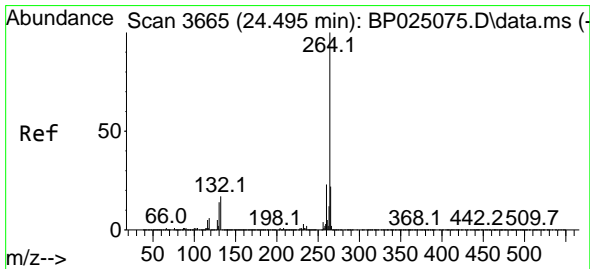
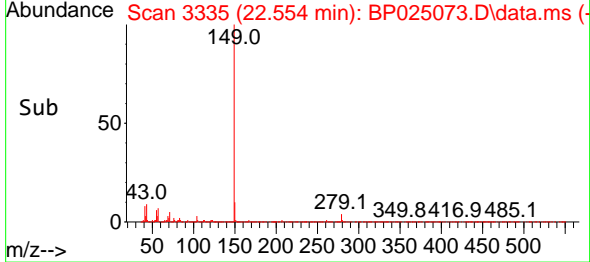
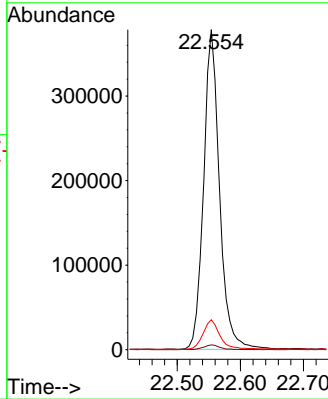
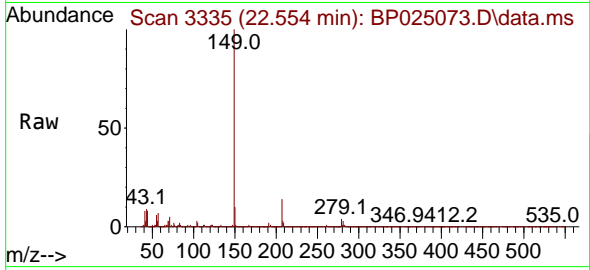




#85
 Di-n-octyl phthalate
 Concen: 10.561 ng
 RT: 22.554 min Scan# 31
 Delta R.T. -0.006 min
 Lab File: BP025073.D
 Acq: 03 Jul 2025 11:02

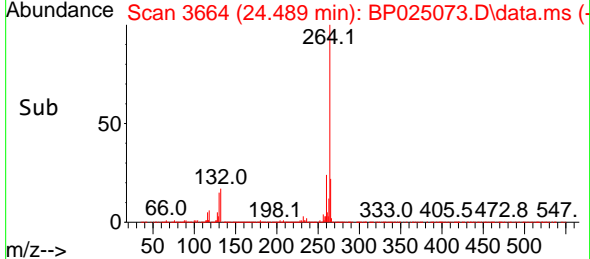
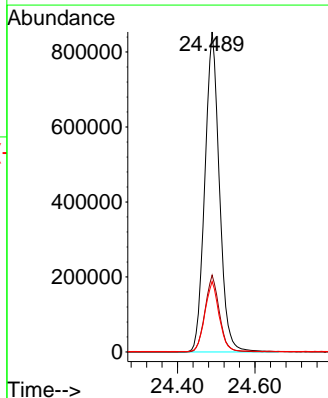
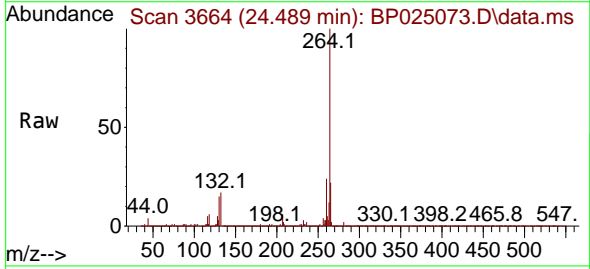
Instrument : BNA_P
 Client Sample Id : SSTDICC010

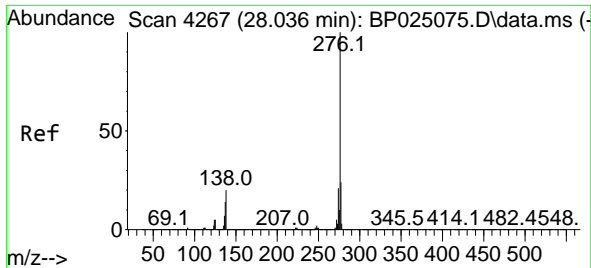
Tgt Ion	Resp	Lower	Upper
149	100		
167	1.5	1.3	1.9
43	9.9	6.9	10.3



#86
 Perylene-d12
 Concen: 20.000 ng
 RT: 24.489 min Scan# 3664
 Delta R.T. -0.006 min
 Lab File: BP025073.D
 Acq: 03 Jul 2025 11:02

Tgt Ion	Resp	Lower	Upper
264	100		
260	24.0	18.6	28.0
265	22.0	17.7	26.5

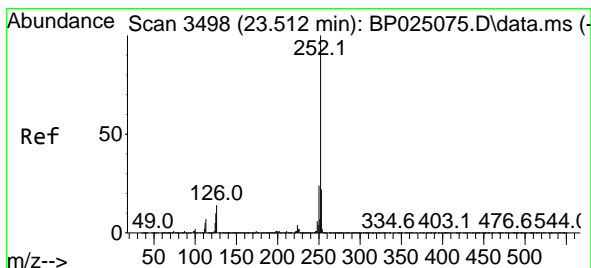
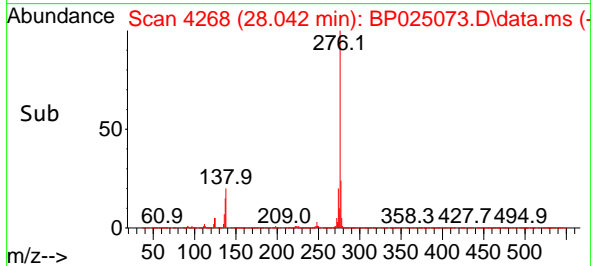
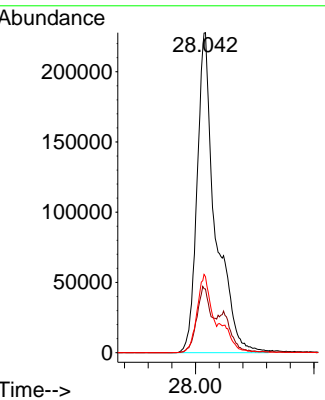
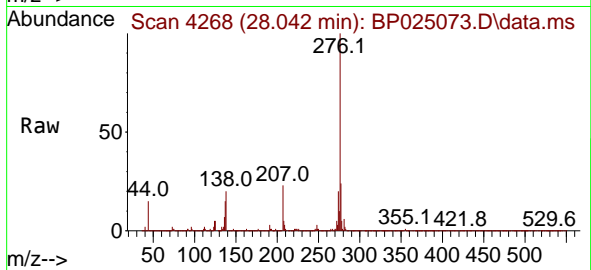




#87
 Indeno(1,2,3-cd)pyrene
 Concen: 8.642 ng
 RT: 28.042 min Scan# 41
 Delta R.T. 0.006 min
 Lab File: BP025073.D
 Acq: 03 Jul 2025 11:02

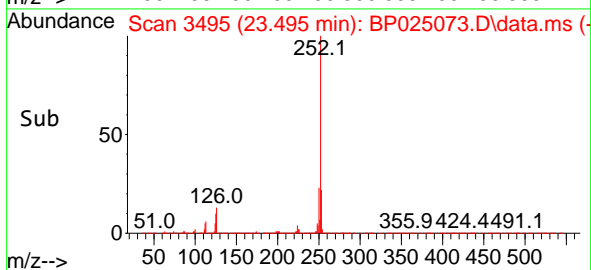
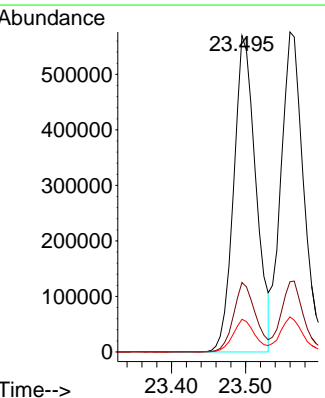
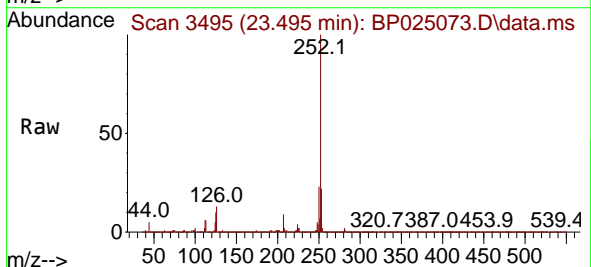
Instrument :
 BNA_P
 ClientSampleId :
 SSTDICC010

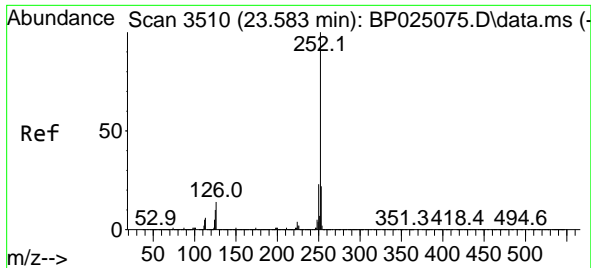
Tgt Ion: 276 Resp: 1222863
 Ion Ratio Lower Upper
 276 100
 138 15.3 13.0 19.6
 277 18.8 15.9 23.9



#88
 Benzo(b)fluoranthene
 Concen: 9.134 ng
 RT: 23.495 min Scan# 3495
 Delta R.T. -0.017 min
 Lab File: BP025073.D
 Acq: 03 Jul 2025 11:02

Tgt Ion: 252 Resp: 1180548
 Ion Ratio Lower Upper
 252 100
 253 21.9 17.7 26.5
 125 10.3 8.1 12.1





#89
 Benzo(k)fluoranthene
 Concen: 9.743 ng
 RT: 23.560 min Scan# 31
 Delta R.T. -0.023 min
 Lab File: BP025073.D
 Acq: 03 Jul 2025 11:02

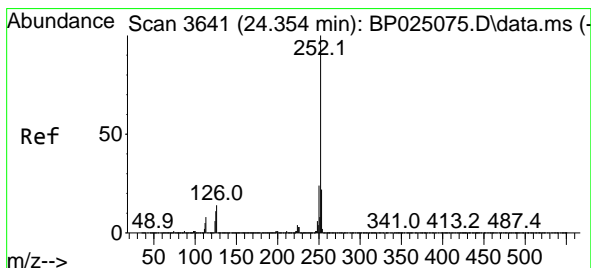
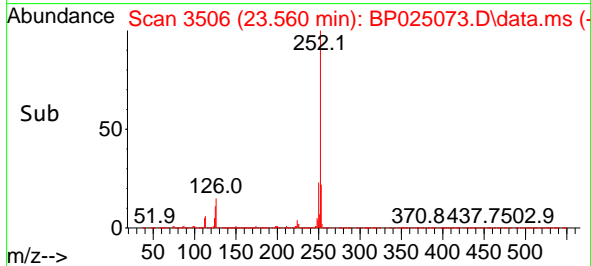
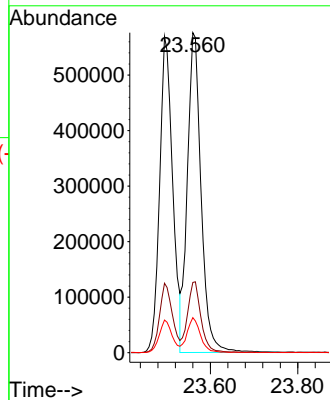
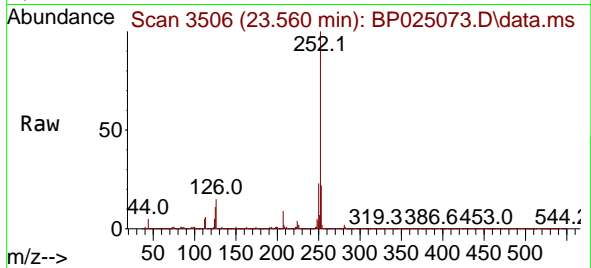
Instrument :

BNA_P

Client Sample Id :

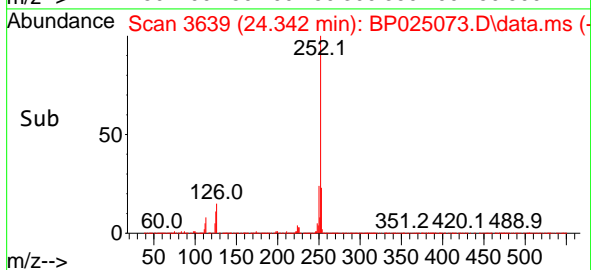
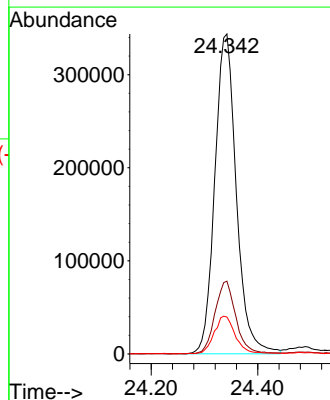
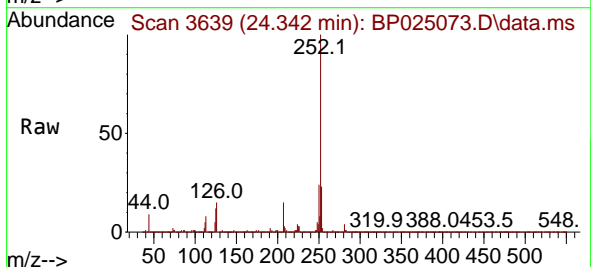
SSTDIC010

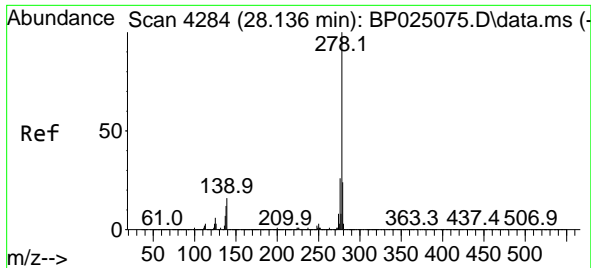
Tgt Ion:252 Resp: 1252989
 Ion Ratio Lower Upper
 252 100
 253 22.0 17.7 26.5
 125 11.0 8.2 12.2



#90
 Benzo(a)pyrene
 Concen: 8.758 ng
 RT: 24.342 min Scan# 3639
 Delta R.T. -0.012 min
 Lab File: BP025073.D
 Acq: 03 Jul 2025 11:02

Tgt Ion:252 Resp: 963455
 Ion Ratio Lower Upper
 252 100
 253 22.8 17.6 26.4
 125 11.5 9.0 13.4

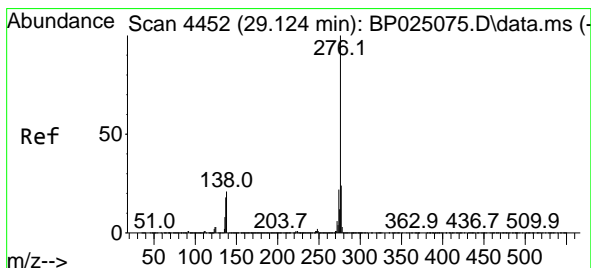
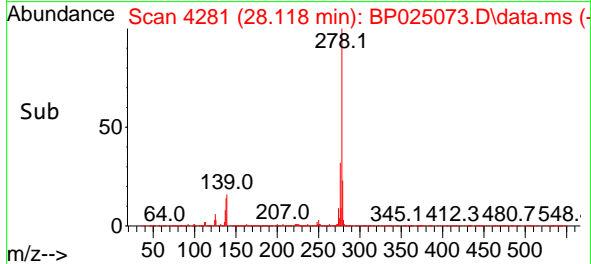
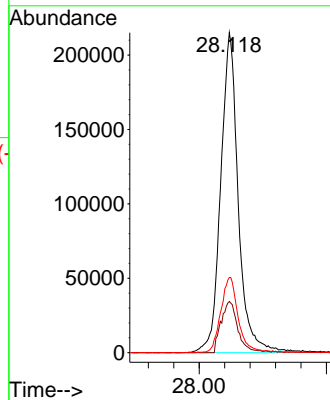
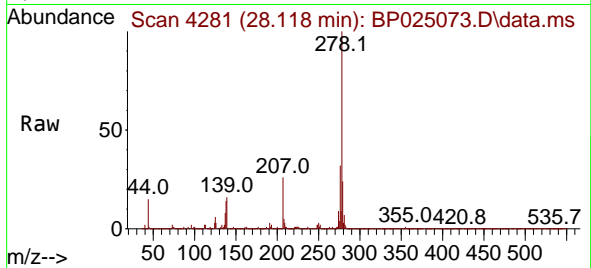




#91
 Dibenzo(a,h)anthracene
 Concen: 8.747 ng
 RT: 28.118 min Scan# 41
 Delta R.T. -0.017 min
 Lab File: BP025073.D
 Acq: 03 Jul 2025 11:02

Instrument :
 BNA_P
 ClientSampleId :
 SSTDICC010

Tgt Ion:278 Resp: 1022797
 Ion Ratio Lower Upper
 278 100
 139 16.0 13.1 19.7
 279 23.5 18.9 28.3



#92
 Benzo(g,h,i)perylene
 Concen: 8.886 ng
 RT: 29.095 min Scan# 4447
 Delta R.T. -0.029 min
 Lab File: BP025073.D
 Acq: 03 Jul 2025 11:02

Tgt Ion:276 Resp: 1073371
 Ion Ratio Lower Upper
 276 100
 277 24.5 19.3 28.9
 138 21.8 16.9 25.3

