

LB136438

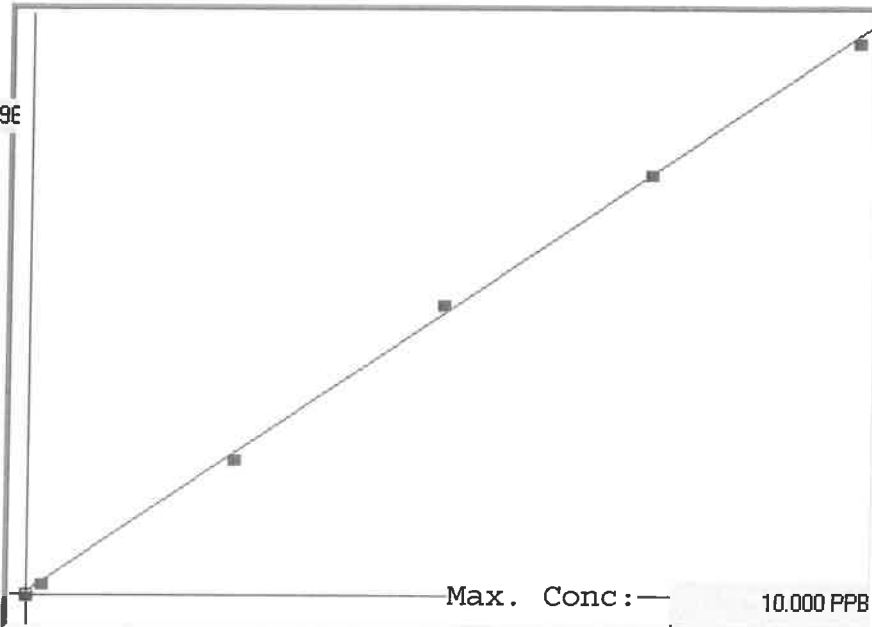
7471B

INSTRUMENT ID: CV1

Linear

$\mu$  Abs.:

49496



A= 0.0000e+000

B= 2.0083e-004

C= -4.9804e-002

Rho= 0.9996076

Accept= Accepted

Std ID	Conc.	Calc.	Dev.	Mean	SD or %RSD	Rep 1	Rep 2	Rep 3	Rep 4	Rep 5
0.0	0.000	-0.027	-0.027	115	0.000	115				
0.2	0.200	0.185	-0.015	1167	0.0 %	1167				
2.5	2.500	2.416	-0.084	12280	0.0 %	12280				
5.0	5.000	5.209	0.209	26183	0.0 %	26183				
7.5	7.500	7.526	0.026	37724	0.0 %	37724				
10.0	10.000	9.891	-0.109	49496	0.0 %	49496				

6/20  
104381

# LB136438 INSTRUMENT ID : CV1

Method: 7471B

Operator: Admin

Date of Analysis: 11 Jul 2025 13:55:58

Type	Sample ID	Extended ID	Conc.	µ Abs.	Units	Std Cond	Method	Date
S	0.0 - 1	50	-	115	PPB	0.0000	7471B	11 Jul 2025 13:56:11
S	0.2 - 1	50.2	-	1167	PPB	0.2000	7471B	11 Jul 2025 13:58:28
S	2.5 - 1	50.5	-	12280	PPB	2.5000	7471B	11 Jul 2025 14:00:45
S	5.0 - 1	50.5	-	26183	PPB	5.0000	7471B	11 Jul 2025 14:03:02
S	7.5 - 1	50.5	-	37724	PPB	7.5000	7471B	11 Jul 2025 14:05:20
S	10.0 - 1	50.5	-	49496	PPB	10.0000	7471B	11 Jul 2025 14:10:26
U	ICV25 - 1	ICV25	3.7723	19031	PPB	-	7471B	11 Jul 2025 14:13:21
U	ICB25 - 1	ICB25	-0.0906	-203	PPB	-	7471B	11 Jul 2025 14:15:39
U	CCV82 - 1	CCV82	5.4904	27586	PPB	-	7471B	11 Jul 2025 14:18:01
U	CCB82 - 1	CCB82	0.0221	358	PPB	-	7471B	11 Jul 2025 14:25:52
U	CRA - 1	CRA	0.2314	1400	PPB	-	7471B	11 Jul 2025 14:28:07
U	HighStd - 1	HighStd	9.7653	48872	PPB	-	7471B	11 Jul 2025 14:30:22
U	ChkStd - 1	ChkStd	6.9404	34806	PPB	-	7471B	11 Jul 2025 14:32:40
U	PB168821BL - 1	PBS	-0.0825	-163	PPB	-	7471B	11 Jul 2025 14:35:04
U	PB168821BS - 1	LCSS	3.6512	18428	PPB	-	7471B	11 Jul 2025 14:40:18
U	Q2537-01 - 1	TR-04-7-9-2025	0.2243	1365	PPB	-	7471B	11 Jul 2025 14:42:34
U	Q2539-01 - 1	HACKENSACK	1.4285	7361	PPB	-	7471B	11 Jul 2025 14:44:55
U	Q2542-01 - 1	VNJ-245	0.6286	3378	PPB	-	7471B	11 Jul 2025 14:47:14
U	Q2543-01 - 1	TP-41	-0.0502	-2	PPB	-	7471B	11 Jul 2025 14:49:41
U	Q2543-02 - 1	TP-49	0.4334	2406	PPB	-	7471B	11 Jul 2025 14:51:59
U	CCV83 - 1	CCV83	4.8879	24586	PPB	-	7471B	11 Jul 2025 14:56:52
U	CCB83 - 1	CCB83	-0.0351	73	PPB	-	7471B	11 Jul 2025 15:01:50
U	Q2543-03 - 1	TP-23	0.0934	713	PPB	-	7471B	11 Jul 2025 15:04:06
U	Q2543-04 - 1	TP-23-99	0.0669	581	PPB	-	7471B	11 Jul 2025 15:06:21
U	Q2546-01 - 1	HD-02-7-9-2025	0.1703	1096	PPB	-	7471B	11 Jul 2025 15:08:36
U	Q2550-02 - 1	VNJ-203	1.0528	5490	PPB	-	7471B	11 Jul 2025 15:10:52
U	Q2551-02 - 1	VNJ-204	0.8180	4321	PPB	-	7471B	11 Jul 2025 15:13:09
U	Q2555-01 - 1	OU4-TS-29-070925	1.0377	5415	PPB	-	7471B	11 Jul 2025 15:15:27
U	Q2555-03 - 1	OU4-TS-30-070925	0.0552	523	PPB	-	7471B	11 Jul 2025 15:17:46
U	Q2556-01 - 1	RT3997	0.2565	1525	PPB	-	7471B	11 Jul 2025 15:20:05
U	Q2557-01 - 1	OILY SPILL DEBRIS	3.4316	17335	PPB	-	7471B	11 Jul 2025 15:22:22
U	Q2558-01 - 1	OU4-TS-Denali-070925	0.2103	1295	PPB	-	7471B	11 Jul 2025 15:24:38
U	CCV84 - 1	CCV84	5.2490	26384	PPB	-	7471B	11 Jul 2025 15:26:56
U	CCB84 - 1	CCB84	-0.0464	17	PPB	-	7471B	11 Jul 2025 15:29:12
U	Q2558-03 - 1	OU4-TS-Grillo-OG-070925	0.4595	2536	PPB	-	7471B	11 Jul 2025 15:36:35
U	Q2558-03DUP - 1	OU4-TS-Grillo-OG-070925DUP	0.4119	2299	PPB	-	7471B	11 Jul 2025 15:38:50
U	Q2558-03MS - 1	OU4-TS-Grillo-OG-070925MS	3.6226	18286	PPB	-	7471B	11 Jul 2025 15:41:07
U	Q2558-03MSD - 1	OU4-TS-Grillo-OG-070925MSD	3.4792	17572	PPB	-	7471B	11 Jul 2025 15:43:24
U	Q2560-01 - 1	LP-7102025	1.1917	6182	PPB	-	7471B	11 Jul 2025 15:45:43
U	PB168822BL - 1	PBS	-0.0368	65	PPB	-	7471B	11 Jul 2025 15:48:03
U	PB168822BS - 1	LCSS	4.0408	20368	PPB	-	7471B	11 Jul 2025 15:50:21
U	Q2559-01 - 1	500-3B CONCRETE CHIP	-0.0627	-64	PPB	-	7471B	11 Jul 2025 15:52:41
U	Q2564-01 - 1	ARS20-0030	0.6889	3678	PPB	-	7471B	11 Jul 2025 15:55:01
U	Q2564-03 - 1	ARS20-0013	0.3217	1850	PPB	-	7471B	11 Jul 2025 15:57:16
U	CCV85 - 1	CCV85	4.7300	23800	PPB	-	7471B	11 Jul 2025 16:02:21
U	CCB85 - 1	CCB85	-0.0378	60	PPB	-	7471B	11 Jul 2025 16:04:37
U	Q2564-05 - 1	ARS20-0039	0.4284	2381	PPB	-	7471B	11 Jul 2025 16:06:57
U	Q2564-05DUP - 1	ARS20-0039DUP	0.4234	2356	PPB	-	7471B	11 Jul 2025 16:09:12
U	Q2564-05MS - 1	ARS20-0039MS	3.9313	19823	PPB	-	7471B	11 Jul 2025 16:11:28
U	Q2564-05MSD - 1	ARS20-0039MSD	3.8154	19246	PPB	-	7471B	11 Jul 2025 16:16:23
U	Q2571-01 - 1	TP-18	0.6993	3730	PPB	-	7471B	11 Jul 2025 16:18:41
U	Q2571-05 - 1	TP-17	0.2105	1296	PPB	-	7471B	11 Jul 2025 16:21:02
U	Q2558-03LX5 - 1		0.0358	426	PPB	-	7471B	11 Jul 2025 16:23:20
U	Q2558-03A - 1		4.4722	22516	PPB	-	7471B	11 Jul 2025 16:25:37
U	Q2564-05LX5 - 1		0.0036	266	PPB	-	7471B	11 Jul 2025 16:27:54
U	Q2564-05A - 1		4.4264	22288	PPB	-	7471B	11 Jul 2025 16:30:13
U	CCV86 - 1	CCV86	4.7515	23907	PPB	-	7471B	11 Jul 2025 16:32:29
U	CCB86 - 1	CCB86	-0.0165	166	PPB	-	7471B	11 Jul 2025 16:34:49