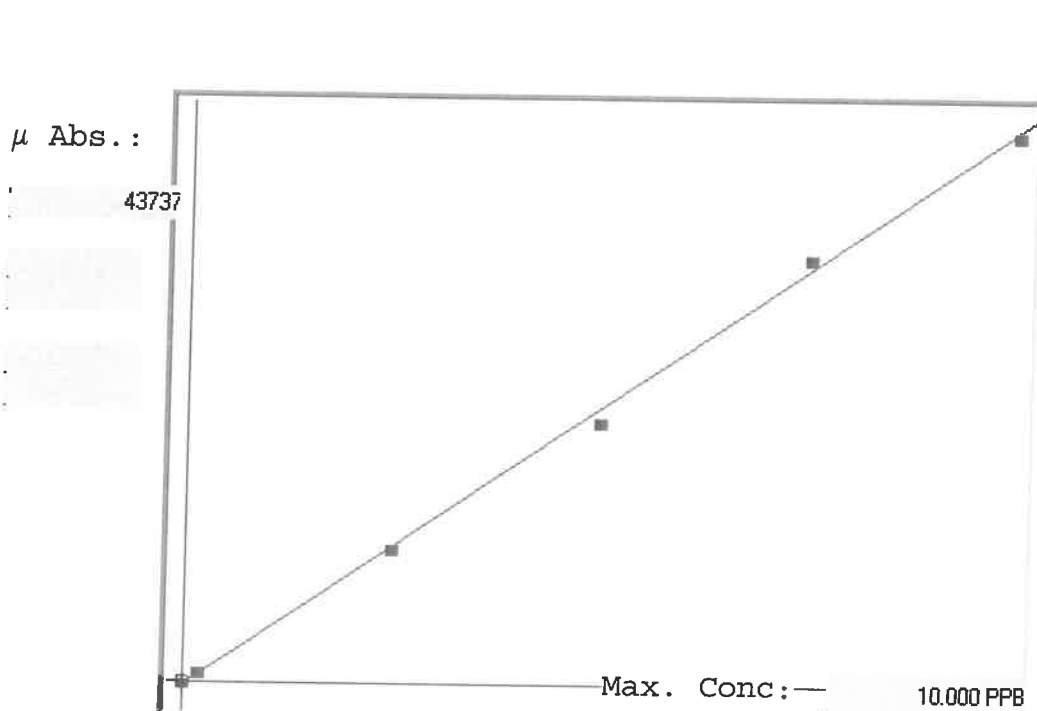


LB136613

7471B

INSTRUMENT ID: CV1



A= 0.0000e+000

B= 2.2602e-004

C= 5.8168e-002

Rho= 0.9993848

Accept=Accepted

Std ID	Conc.	Calc.	Dev.	Mean	SD or %RSD	Rep 1	Rep 2	Rep 3	Rep 4	Rep 5	0/0/1)
0.0	0.000	0.042	0.042	-70	0.000	-70					1
0.2	0.200	0.238	0.038	795	0.0 %	795					19
2.5	2.500	2.483	-0.017	10729	0.0 %	10729					1
5.0	5.000	4.780	-0.220	20891	0.0 %	20891					4
7.5	7.500	7.713	0.213	33868	0.0 %	33868					3
10.0	10.000	9.944	-0.056	43737	0.0 %	43737					1

# LB136613 INSTRUMENT ID : CV1

Method: 7471B

Operator: Admin

Date of Analysis: 25 Jul 2025 10:38:47

Type	Sample ID	Extended ID	Conc.	μ Abs.	Units	Type	Std Conc	Method	Date
S	0.0 - 1	50	-	-70	PPB	Std	0.0000	7471B	25 Jul 2025 10:55:35
S	0.2 - 1	102	-	795	PPB	Std	0.2000	7471B	25 Jul 2025 11:00:43
S	2.5 - 1	52.5	-	10729	PPB	Std	2.5000	7471B	25 Jul 2025 11:03:00
S	5.0 - 1	55	-	20891	PPB	Std	5.0000	7471B	25 Jul 2025 11:05:17
S	7.5 - 1	57.5	-	33868	PPB	Std	7.5000	7471B	25 Jul 2025 11:07:35
S	10.0 - 1	51	-	43737	PPB	Std	10.0000	7471B	25 Jul 2025 11:09:56
U	ICV39 - 1	ICV39	4.0775	17783	PPB	SMPL	-7471B		25 Jul 2025 11:13:01
U	ICB39 - 1	ICB39	-0.0072	-289	PPB	SMPL	-7471B		25 Jul 2025 11:15:17
U	CCV47 - 1	CCV47	4.9827	21788	PPB	SMPL	-7471B		25 Jul 2025 11:17:35
U	CCB47 - 1	CCB47	-0.0804	-613	PPB	SMPL	-7471B		25 Jul 2025 11:19:51
U	CRA - 1	CRA	0.2327	772	PPB	SMPL	-7471B		25 Jul 2025 11:46:11
U	HighStd - 1	HighStd	10.0960	44411	PPB	SMPL	-7471B		25 Jul 2025 11:48:26
U	ChkStd - 1	ChkStd	7.3713	32356	PPB	SMPL	-7471B		25 Jul 2025 11:50:42
U	PB169010BL - 1	PBS	-0.0476	-468	PPB	SMPL	-7471B		25 Jul 2025 11:53:10
U	PB169010BS - 1	LCSS	4.1523	18114	PPB	SMPL	-7471B		25 Jul 2025 11:58:08
U	Q2580-02 - 1	WC-URBAN-FILL-B2	6.7072	29418	PPB	SMPL	-7471B		25 Jul 2025 12:00:26
U	Q2639-01 - 1	OU4-TS-38-071725	1.3368	5657	PPB	SMPL	-7471B		25 Jul 2025 12:02:48
U	Q2639-03 - 1	OU4-TS-39-071725	0.1307	321	PPB	SMPL	-7471B		25 Jul 2025 12:05:10
U	Q2639-05 - 1	OU4-TS-40-071725	0.4514	1740	PPB	SMPL	-7471B		25 Jul 2025 12:07:31
U	Q2639-07 - 1	OU4-TS-41-071725	1.0475	4377	PPB	SMPL	-7471B		25 Jul 2025 12:09:50
U	CCV48 - 1	CCV48	4.8570	21232	PPB	SMPL	-7471B		25 Jul 2025 12:12:07
U	CCB48 - 1	CCB48	-0.0234	-361	PPB	SMPL	-7471B		25 Jul 2025 12:14:26
U	Q2639-09 - 1	OU4-TS-42-071725	0.9977	4157	PPB	SMPL	-7471B		25 Jul 2025 12:16:44
U	Q2639-11 - 1	OU4-TS-43-071725	0.7362	3000	PPB	SMPL	-7471B		25 Jul 2025 12:19:00
U	Q2639-13 - 1	OU4-TS-44-071725	0.7118	2892	PPB	SMPL	-7471B		25 Jul 2025 12:21:18
U	Q2684-01 - 1	PL-02-07232025	0.4085	1550	PPB	SMPL	-7471B		25 Jul 2025 12:23:36
U	Q2687-01 - 1	VNJ-251	12.7214	56027	PPB	SMPL	-7471B		25 Jul 2025 12:25:55
U	Q2689-01 - 1	OR-03-07232025	0.4471	1721	PPB	SMPL	-7471B		25 Jul 2025 12:28:12
U	Q2689-01DUP - 1	OR-03-07232025DUP	0.5606	2223	PPB	SMPL	-7471B		25 Jul 2025 12:30:43
U	Q2689-01MS - 1	OR-03-07232025MS	5.1843	22680	PPB	SMPL	-7471B		25 Jul 2025 12:33:01
U	Q2689-01MSD - 1	OR-03-07232025MSD	5.4311	23772	PPB	SMPL	-7471B		25 Jul 2025 12:35:21
U	Q2691-01 - 1	295	0.2006	630	PPB	SMPL	-7471B		25 Jul 2025 12:37:40
U	CCV49 - 1	CCV49	5.1163	22379	PPB	SMPL	-7471B		25 Jul 2025 12:39:59
U	CCB49 - 1	CCB49	-0.0040	-275	PPB	SMPL	-7471B		25 Jul 2025 12:42:15
U	Q2691-07 - 1	299	0.1594	448	PPB	SMPL	-7471B		25 Jul 2025 12:44:34
U	Q2689-01LX5 - 1		0.1450	384	PPB	SMPL	-7471B		25 Jul 2025 12:46:50
U	Q2689-01A - 1		4.7239	20643	PPB	SMPL	-7471B		25 Jul 2025 12:49:06
U	Q2687-01DLX2 - 1		6.3142	27679	PPB	SMPL	-7471B		25 Jul 2025 12:51:23
U	CCV50 - 1	CCV50	4.9967	21850	PPB	SMPL	-7471B		25 Jul 2025 12:53:42
U	CCB50 - 1	CCB50	-0.0209	-350	PPB	SMPL	-7471B		25 Jul 2025 12:56:10