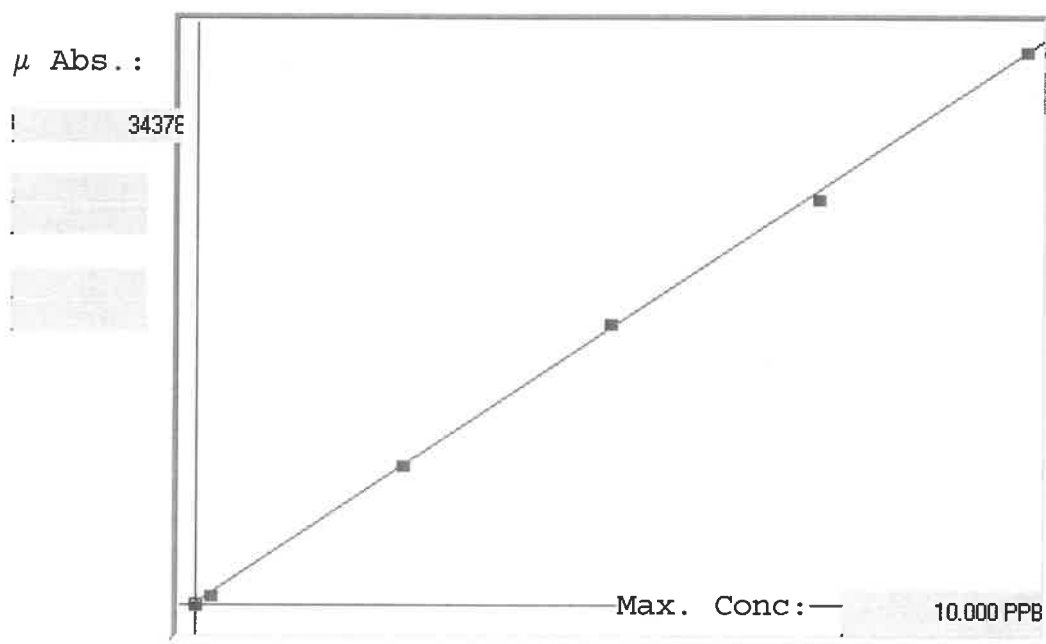


LB136516

7470A

INSTRUMENT ID: CV 2

Linear



A= 0.0000e+000
B= 2.9269e-004
C= -3.0515e-002
Rho= 0.9998382
Accept=Accepted

Std ID	Conc.	Calc.	Dev.	Mean	SD or %RSD	Rep 1	Rep 2	Rep 3	Rep 4	Rep 5	o/eD
0.0	0.000	-0.019	-0.019	39	0.000	39	0				-
0.2	0.200	0.174	-0.026	698	0.0 %	698					13
2.5	2.500	2.543	0.043	8791	0.0 %	8791					2
5.0	5.000	5.091	0.091	17498	0.0 %	17498					2
7.5	7.500	7.380	-0.120	25320	0.0 %	25320					2
10.0	10.000	10.032	0.032	34378	0.0 %	34378					6

LB136516 INSTRUMENT ID : CV1

Method: 7470A

Operator: Admin

Date of Analysis: 17 Jul 2025 09:43:45

Type	Sample ID	Extended ID	Conc.	μ Abs.	Units	Type	Std Conc	Method	Date
S	0.0 - 1	50	-	39	PPB	Std	0.0000	7470A	17 Jul 2025 09:53:13
S	0.2 - 1	50.2	-	698	PPB	Std	0.2000	7470A	17 Jul 2025 09:55:30
S	2.5 - 1	52.5	-	8791	PPB	Std	2.5000	7470A	17 Jul 2025 09:57:47
S	5.0 - 1	55	-	17498	PPB	Std	5.0000	7470A	17 Jul 2025 10:00:03
S	7.5 - 1	57.5	-	25320	PPB	Std	7.5000	7470A	17 Jul 2025 10:02:21
S	10.0 - 1	510	-	34378	PPB	Std	10.0000	7470A	17 Jul 2025 10:04:39
U	ICV31 - 1	ICV31	3.7013	12750	PPB	SMPL	-7470A	-7470A	17 Jul 2025 10:07:33
U	ICB31 - 1	ICB31	0.0043	119	PPB	SMPL	-7470A	-7470A	17 Jul 2025 10:12:36
U	CCV18 - 1	CCV18	4.9967	17176	PPB	SMPL	-7470A	-7470A	17 Jul 2025 10:14:51
U	CCB18 - 1	CCB18	0.0687	339	PPB	SMPL	-7470A	-7470A	17 Jul 2025 10:21:36
U	CRA - 1	CRA	0.2317	896	PPB	SMPL	-7470A	-7470A	17 Jul 2025 10:26:31
U	HighStd - 1	HighStd	11.1786	38297	PPB	SMPL	-7470A	-7470A	17 Jul 2025 10:33:49
U	ChkStd - 1	ChkStd	7.4450	25541	PPB	SMPL	-7470A	-7470A	17 Jul 2025 10:36:06
U	PB168893BL - 1	PBW	0.0942	426	PPB	SMPL	-7470A	-7470A	17 Jul 2025 10:41:04
U	PB168893BS - 1	LCSW	4.4830	15421	PPB	SMPL	-7470A	-7470A	17 Jul 2025 10:46:02
U	Q2592-02 - 1	WC-SOIL-20250711	-0.0370	-22	PPB	SMPL	-7470A	-7470A	17 Jul 2025 10:48:18
U	Q2600-02 - 1	TRENCH	-0.0118	64	PPB	SMPL	-7470A	-7470A	17 Jul 2025 10:50:36
U	Q2600-06 - 1	STOCK-PILE	0.0330	217	PPB	SMPL	-7470A	-7470A	17 Jul 2025 10:52:53
U	Q2600-10 - 1	END-OF-TRENCH	-0.0428	-42	PPB	SMPL	-7470A	-7470A	17 Jul 2025 10:55:11
U	Q2605-01 - 1	V908	-0.0223	28	PPB	SMPL	-7470A	-7470A	17 Jul 2025 10:57:26
U	CCV19 - 1	CCV19	5.1720	17775	PPB	SMPL	-7470A	-7470A	17 Jul 2025 11:03:07
U	CCB19 - 1	CCB19	-0.0536	-79	PPB	SMPL	-7470A	-7470A	17 Jul 2025 11:05:22
U	Q2605-02 - 1	VB16135	-0.0127	61	PPB	SMPL	-7470A	-7470A	17 Jul 2025 11:07:40
U	Q2605-03 - 1	VB15061	-0.0086	75	PPB	SMPL	-7470A	-7470A	17 Jul 2025 11:09:55
U	Q2605-04 - 1	V897	-0.0147	54	PPB	SMPL	-7470A	-7470A	17 Jul 2025 11:12:11
U	Q2609-02 - 1	710-ABC	0.0069	128	PPB	SMPL	-7470A	-7470A	17 Jul 2025 11:14:27
U	Q2609-06 - 1	709-AB	0.1056	465	PPB	SMPL	-7470A	-7470A	17 Jul 2025 11:16:42
U	Q2614-06 - 1	HR-MCN-COMP-01	-0.1002	-238	PPB	SMPL	-7470A	-7470A	17 Jul 2025 11:18:58
U	Q2614-06DUP - 1	HR-MCN-COMP-01DUP	-0.0264	14	PPB	SMPL	-7470A	-7470A	17 Jul 2025 11:21:17
U	Q2614-06MS - 1	HR-MCN-COMP-01MS	2.6567	9181	PPB	SMPL	-7470A	-7470A	17 Jul 2025 11:23:34
U	Q2614-06MSD - 1	HR-MCN-COMP-01MSD	3.1492	10864	PPB	SMPL	-7470A	-7470A	17 Jul 2025 11:25:51
U	CCV20 - 1	CCV20	5.3268	18304	PPB	SMPL	-7470A	-7470A	17 Jul 2025 11:30:51
U	CCB20 - 1	CCB20	0.0146	154	PPB	SMPL	-7470A	-7470A	17 Jul 2025 11:35:50
U	pb168847TB - 1	pb168847TB	-0.0138	57	PPB	SMPL	-7470A	-7470A	17 Jul 2025 11:38:05
U	Q2614-06LX5 - 1		-0.0121	63	PPB	SMPL	-7470A	-7470A	17 Jul 2025 11:40:21
U	Q2614-06A - 1		4.2582	14653	PPB	SMPL	-7470A	-7470A	17 Jul 2025 11:42:37
U	CCV21 - 1	CCV21	5.2148	17921	PPB	SMPL	-7470A	-7470A	17 Jul 2025 11:53:37
U	CCB21 - 1	CCB21	-0.0370	-22	PPB	SMPL	-7470A	-7470A	17 Jul 2025 11:55:53