

Data Path : Z:\pestpcbsrv\HPCHEM1\ECD_S\Data\PS072425\
 Data File : PS031225.D
 Signal(s) : Signal #1: ECD1A.ch Signal #2: ECD2B.ch
 Acq On : 24 Jul 2025 14:38
 Operator : AR\AJ
 Sample : Q2638-11MSD
 Misc :
 ALS Vial : 6 Sample Multiplier: 1

Instrument :
 ECD_S
ClientSampleId :
 OU4-TS-36-071725MSD

Manual Integrations
APPROVED

Reviewed By :Yogesh Patel 07/25/2025
 Supervised By :mohammad ahmed 07/26/2025

Integration File signal 1: autoint1.e
 Integration File signal 2: autoint2.e
 Quant Time: Jul 24 16:05:38 2025
 Quant Method : Z:\pestpcbsrv\HPCHEM1\ECD_S\Method\PS072125.M
 Quant Title : 8080.M
 QLast Update : Tue Jul 22 03:18:42 2025
 Response via : Initial Calibration
 Integrator: ChemStation

Volume Inj. : 1 µl
 Signal #1 Phase : ZB-MR1 Signal #2 Phase: ZB-MR2
 Signal #1 Info : 30M x 0.32mm x0.5 Signal #2 Info : 30M x 0.32mm x 0.25µm

Compound	RT#1	RT#2	Resp#1	Resp#2	ng/ml	ng/ml

System Monitoring Compounds						
4) S 2,4-DCAA	7.321	7.763	1182.7E6	293.5E6	272.000	289.212
Target Compounds						
1) T Dalapon	2.681	2.697	929.2E6	1329.1E6	148.125m	468.524m#
2) T 3,5-DICHL...	6.484	6.710	1601.7E6	432.1E6	290.027	280.572
3) T 4-Nitroph...	7.121	7.297	401.7E6	405.8E6	243.642	224.262
5) T DICAMBA	7.510	7.965	4385.7E6	1684.4E6	265.846	261.004
6) T MCPP	7.690	8.062	228.4E6	43782966	22.816	21.072
7) T MCPA	7.838	8.309	313.5E6	61286173	25.055	19.424
8) T DICHLORPROP	8.221	8.684	1120.5E6	435.1E6	293.162	287.228
9) T 2,4-D	8.453	9.020	1400.6E6	523.8E6	375.005	308.450m
10) T Pentachlo...	8.759	9.544	15735.7E6	9959.1E6	288.085	254.830
11) T 2,4,5-TP ...	9.338	9.925	6625.4E6	4213.6E6	301.793	282.906m
12) T 2,4,5-T	9.632	10.353	6100.6E6	3953.0E6	312.406	277.997
13) T 2,4-DB	10.208	10.920	659.6E6	302.0E6	220.617m	257.968
15) T Picloram	11.232	12.415	5206.9E6	5024.0E6	260.260	201.807
16) T DCPA	11.716	12.348	6191.0E6	6094.3E6	215.762	264.557m

(f)=RT Delta > 1/2 Window (#)=Amounts differ by > 25% (m)=manual int.

Data Path : Z:\pestpcbsrv\HPCHEM1\ECD_S\Data\PS072425\
 Data File : PS031225.D
 Signal(s) : Signal #1: ECD1A.ch Signal #2: ECD2B.ch
 Acq On : 24 Jul 2025 14:38
 Operator : AR\AJ
 Sample : Q2638-11MSD
 Misc :
 ALS Vial : 6 Sample Multiplier: 1

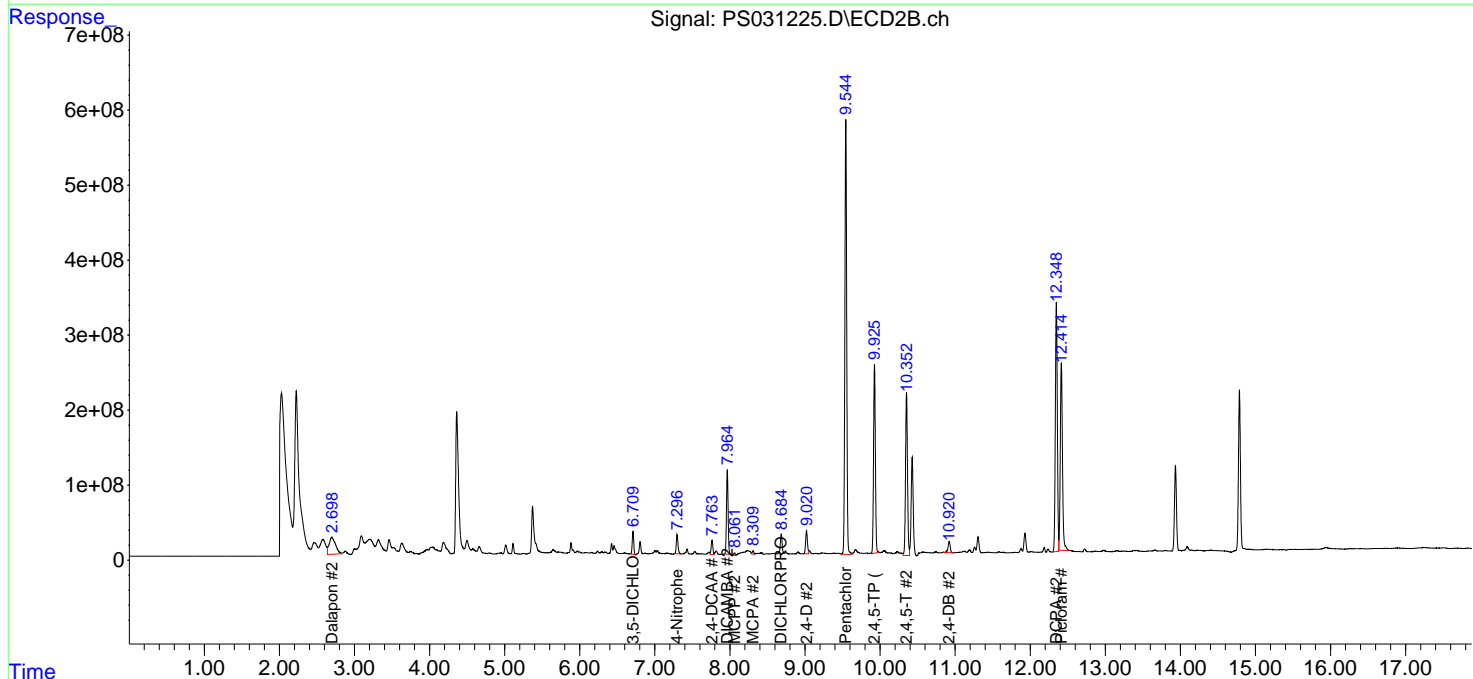
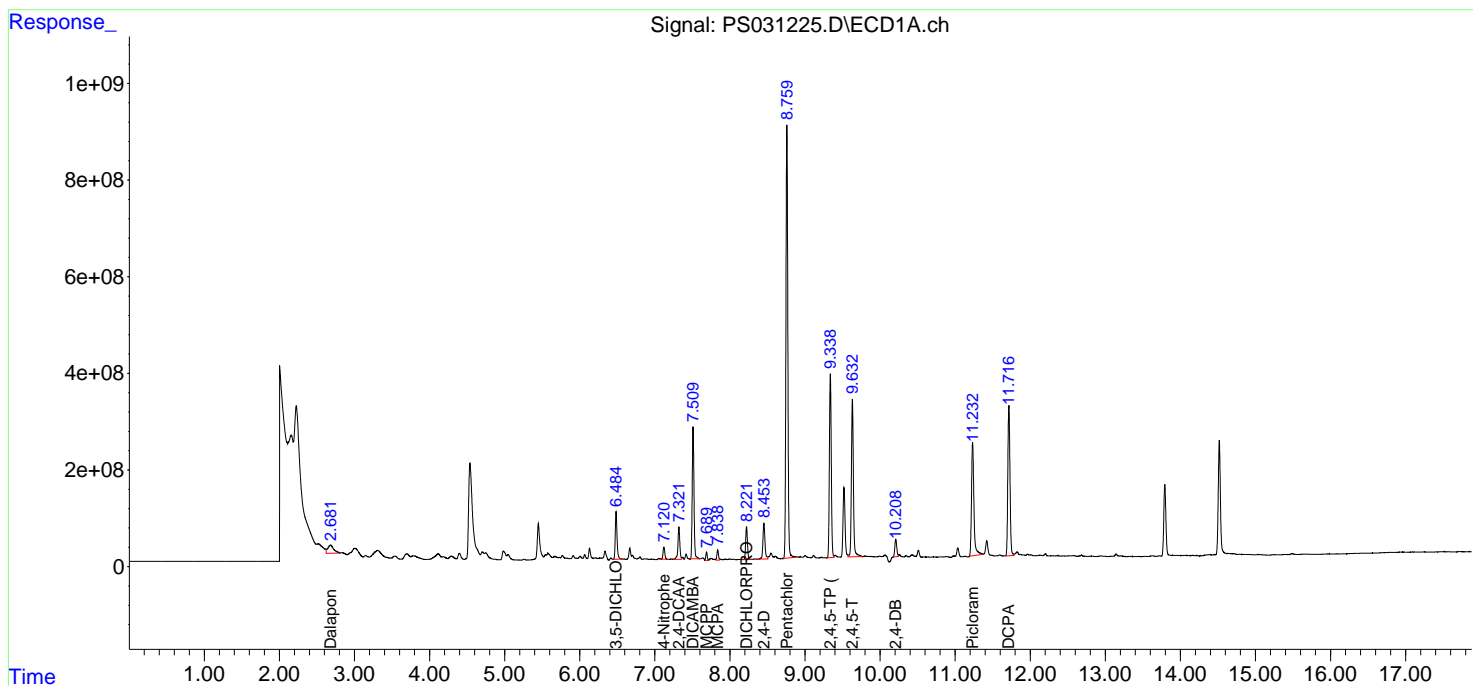
Instrument :
 ECD_S
 ClientSampleId :
 OU4-TS-36-071725MSD

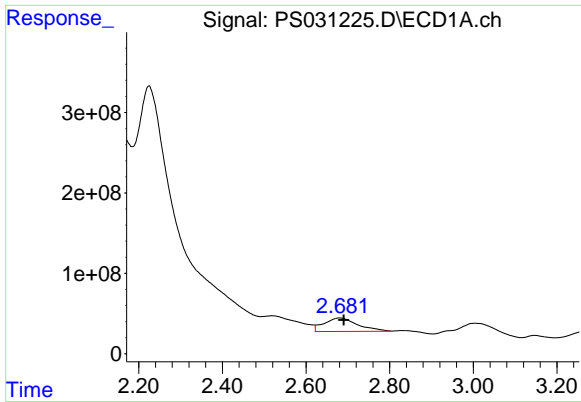
Manual Integrations
 APPROVED

Reviewed By :Yogesh Patel 07/25/2025
 Supervised By :mohammad ahmed 07/26/2025

Integration File signal 1: autoint1.e
 Integration File signal 2: autoint2.e
 Quant Time: Jul 24 16:05:38 2025
 Quant Method : Z:\pestpcbsrv\HPCHEM1\ECD_S\Method\PS072125.M
 Quant Title : 8080.M
 QLast Update : Tue Jul 22 03:18:42 2025
 Response via : Initial Calibration
 Integrator: ChemStation

Volume Inj. : 1 µl
 Signal #1 Phase : ZB-MR1 Signal #2 Phase: ZB-MR2
 Signal #1 Info : 30M x 0.32mm x0.5 Signal #2 Info : 30M x 0.32mm x 0.25µm





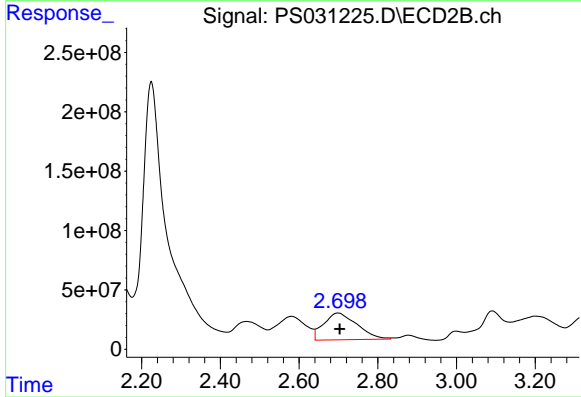
#1 Dalapon

R.T.: 2.681 min
 Delta R.T.: -0.009 min
 Response: 929172420
 Conc: 148.12 ng/ml

Instrument :
 ECD_S
 ClientSampleId :
 OU4-TS-36-071725MSD

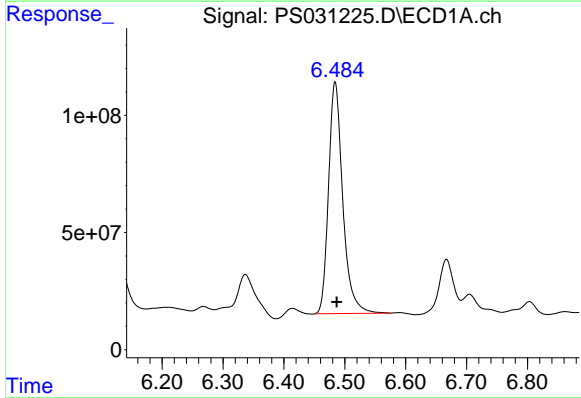
Manual Integrations
 APPROVED

Reviewed By :Yogesh Patel 07/25/2025
 Supervised By :mohammad ahmed 07/26/2025



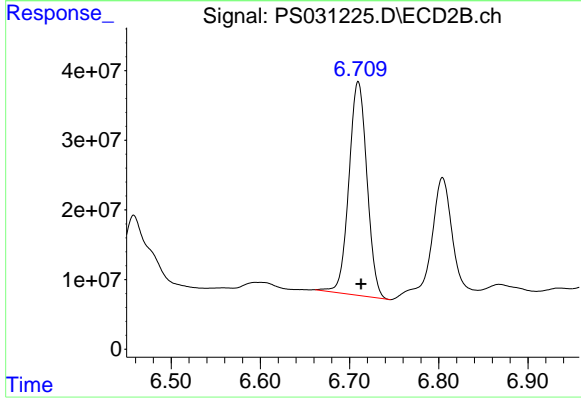
#1 Dalapon

R.T.: 2.697 min
 Delta R.T.: -0.006 min
 Response: 1329081159
 Conc: 468.52 ng/ml m



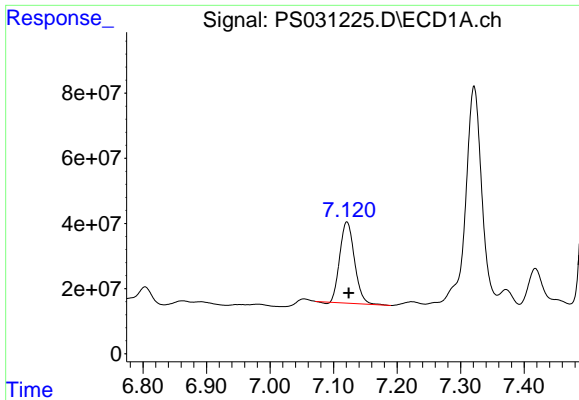
#2 3,5-DICHLOROBENZOIC ACID

R.T.: 6.484 min
 Delta R.T.: -0.003 min
 Response: 1601749499
 Conc: 290.03 ng/ml



#2 3,5-DICHLOROBENZOIC ACID

R.T.: 6.710 min
 Delta R.T.: -0.003 min
 Response: 432050693
 Conc: 280.57 ng/ml

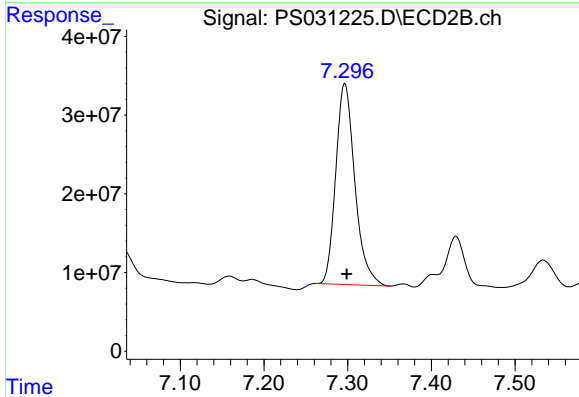


#3 4-Nitrophenol
 R.T.: 7.121 min
 Delta R.T.: -0.003 min
 Response: 401714088
 Conc: 243.64 ng/ml

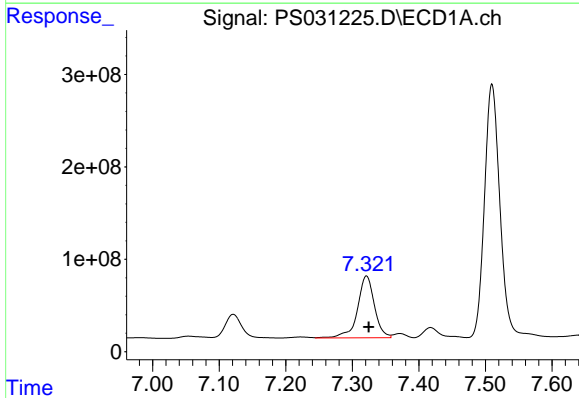
Instrument :
 ECD_S
 ClientSampleId :
 OU4-TS-36-071725MSD

Manual Integrations
 APPROVED

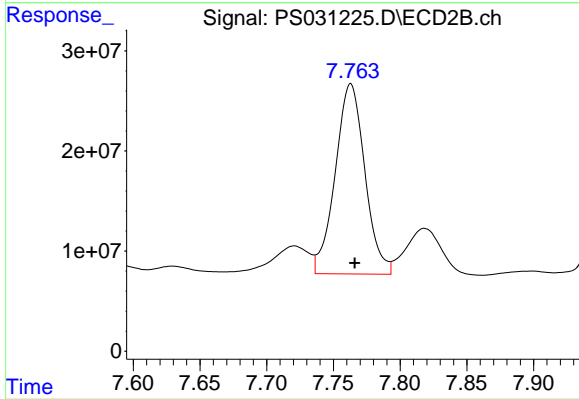
Reviewed By :Yogesh Patel 07/25/2025
 Supervised By :mohammad ahmed 07/26/2025



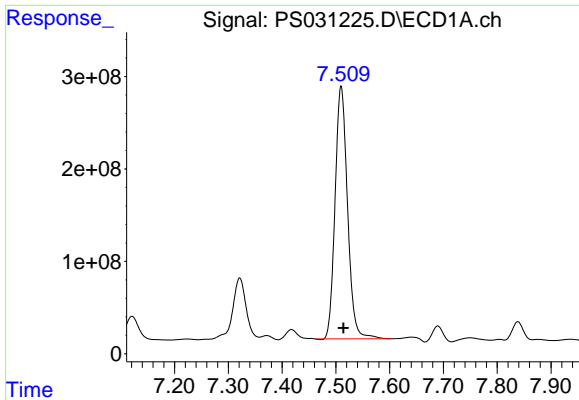
#3 4-Nitrophenol
 R.T.: 7.297 min
 Delta R.T.: -0.002 min
 Response: 405761384
 Conc: 224.26 ng/ml



#4 2,4-DCAA
 R.T.: 7.321 min
 Delta R.T.: -0.003 min
 Response: 1182723721
 Conc: 272.00 ng/ml



#4 2,4-DCAA
 R.T.: 7.763 min
 Delta R.T.: -0.003 min
 Response: 293540872
 Conc: 289.21 ng/ml



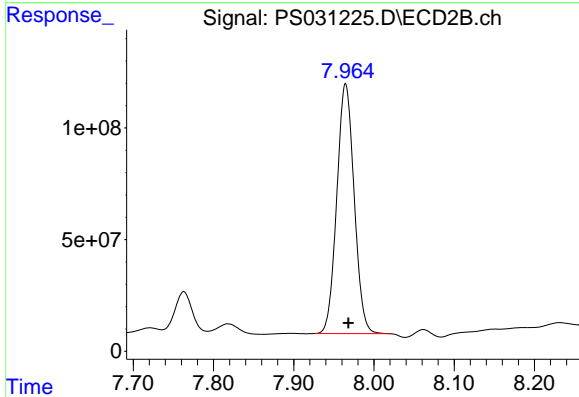
#5 DICAMBA

R.T.: 7.510 min
 Delta R.T.: -0.004 min
 Response: 4385656062
 Conc: 265.85 ng/ml

Instrument :
 ECD_S
 ClientSampleId :
 OU4-TS-36-071725MSD

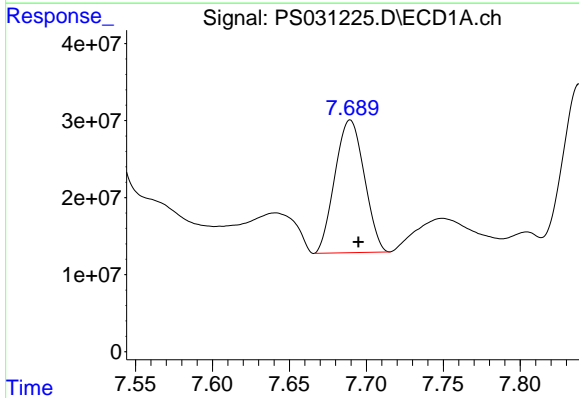
Manual Integrations
 APPROVED

Reviewed By :Yogesh Patel 07/25/2025
 Supervised By :mohammad ahmed 07/26/2025



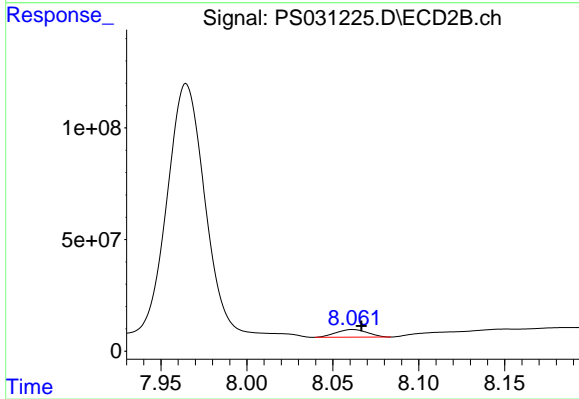
#5 DICAMBA

R.T.: 7.965 min
 Delta R.T.: -0.003 min
 Response: 1684355051
 Conc: 261.00 ng/ml



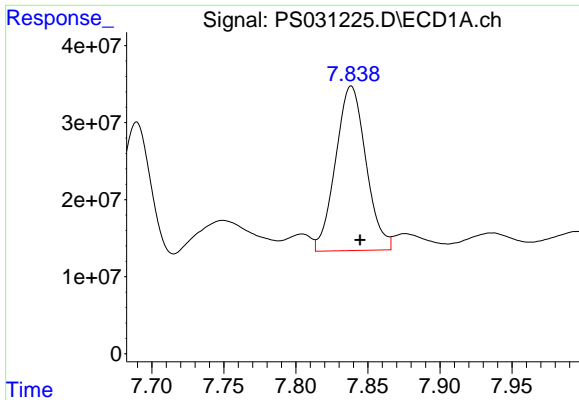
#6 MCPP

R.T.: 7.690 min
 Delta R.T.: -0.005 min
 Response: 228389997
 Conc: 22.82 ug/ml



#6 MCPP

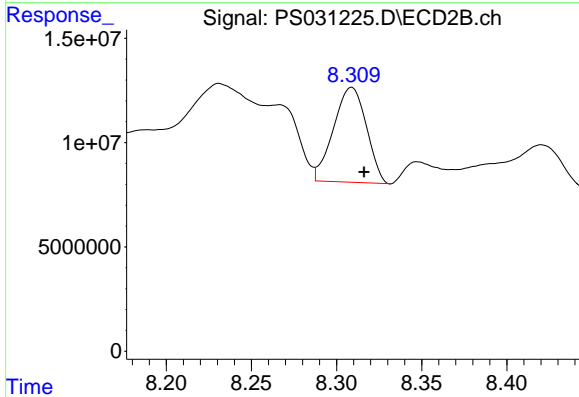
R.T.: 8.062 min
 Delta R.T.: -0.005 min
 Response: 43782966
 Conc: 21.07 ug/ml



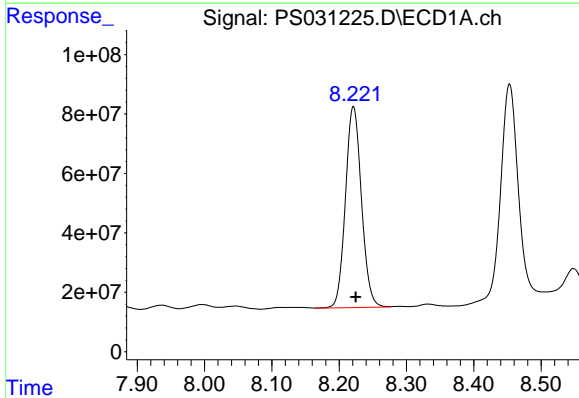
#7 MCPA
 R.T.: 7.838 min
 Delta R.T.: -0.006 min
 Response: 313549621
 Conc: 25.06 ug/ml

Instrument : ECD_S
 ClientSampleId : OU4-TS-36-071725MSD

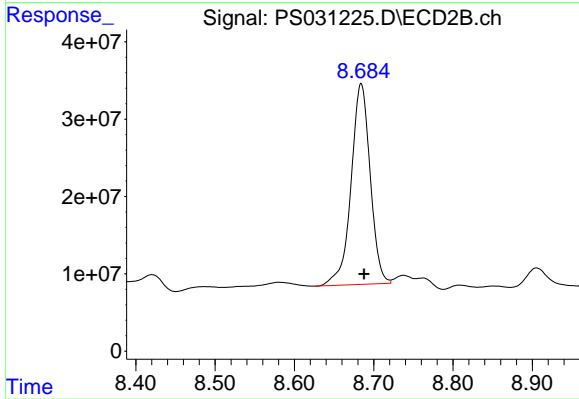
Manual Integrations
APPROVED
 Reviewed By :Yogesh Patel 07/25/2025
 Supervised By :mohammad ahmed 07/26/2025



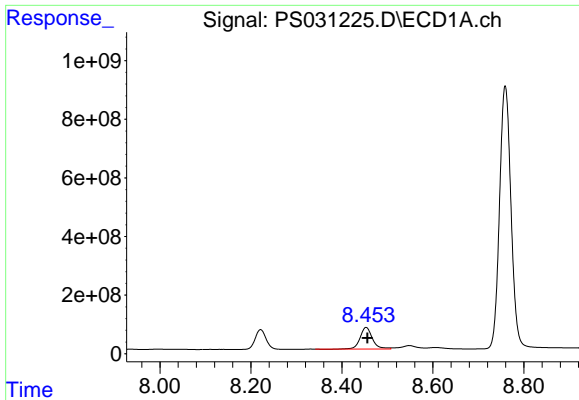
#7 MCPA
 R.T.: 8.309 min
 Delta R.T.: -0.008 min
 Response: 61286173
 Conc: 19.42 ug/ml



#8 DICHLORPROP
 R.T.: 8.221 min
 Delta R.T.: -0.003 min
 Response: 1120450848
 Conc: 293.16 ng/ml



#8 DICHLORPROP
 R.T.: 8.684 min
 Delta R.T.: -0.003 min
 Response: 435109799
 Conc: 287.23 ng/ml

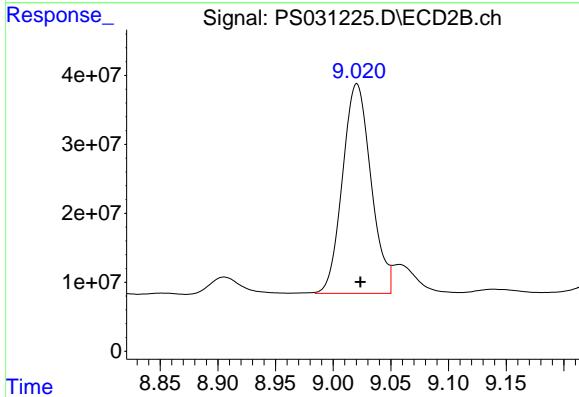


#9 2,4-D
 R.T.: 8.453 min
 Delta R.T.: -0.003 min
 Response: 1400610972
 Conc: 375.00 ng/ml

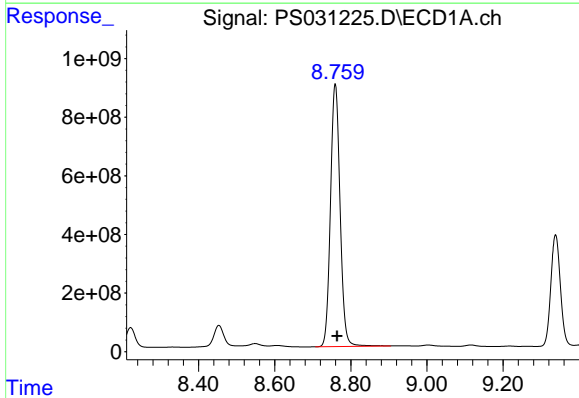
Instrument :
 ECD_S
 ClientSampleId :
 OU4-TS-36-071725MSD

Manual Integrations
 APPROVED

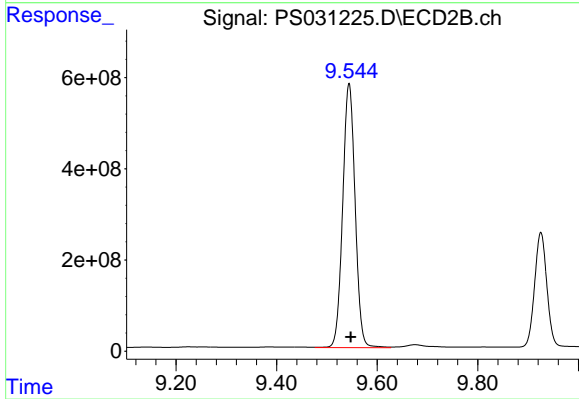
Reviewed By :Yogesh Patel 07/25/2025
 Supervised By :mohammad ahmed 07/26/2025



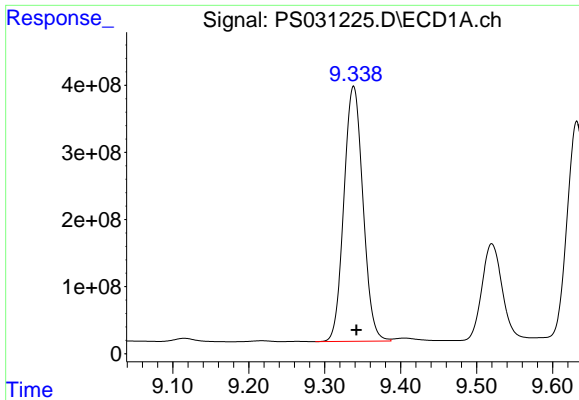
#9 2,4-D
 R.T.: 9.020 min
 Delta R.T.: -0.004 min
 Response: 523846009
 Conc: 308.45 ng/ml m



#10 Pentachlorophenol
 R.T.: 8.759 min
 Delta R.T.: -0.005 min
 Response: 15735660963
 Conc: 288.09 ng/ml



#10 Pentachlorophenol
 R.T.: 9.544 min
 Delta R.T.: -0.003 min
 Response: 9959080367
 Conc: 254.83 ng/ml

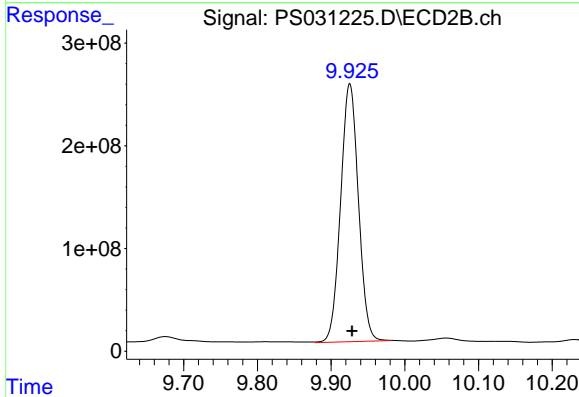


#11 2,4,5-TP (SILVEX)
 R.T.: 9.338 min
 Delta R.T.: -0.004 min
 Response: 6625438369
 Conc: 301.79 ng/ml

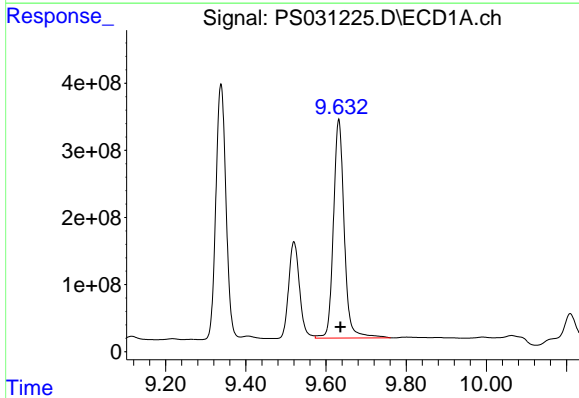
Instrument :
 ECD_S
 ClientSampleId :
 OU4-TS-36-071725MSD

Manual Integrations
 APPROVED

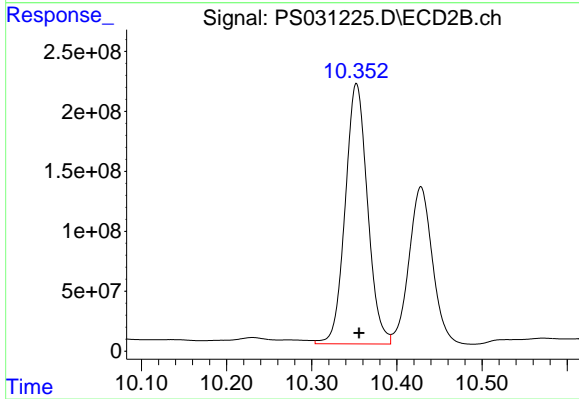
Reviewed By :Yogesh Patel 07/25/2025
 Supervised By :mohammad ahmed 07/26/2025



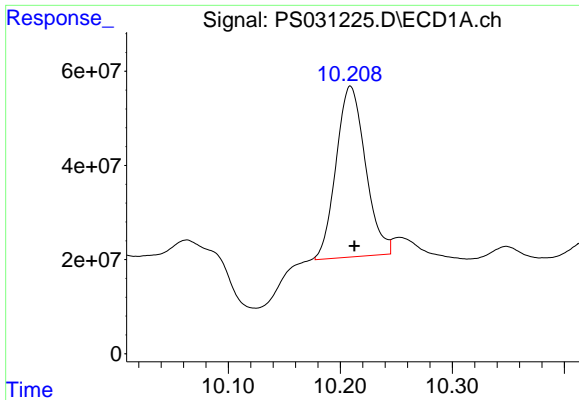
#11 2,4,5-TP (SILVEX)
 R.T.: 9.925 min
 Delta R.T.: -0.004 min
 Response: 4213648630
 Conc: 282.91 ng/ml m



#12 2,4,5-T
 R.T.: 9.632 min
 Delta R.T.: -0.004 min
 Response: 6100607360
 Conc: 312.41 ng/ml



#12 2,4,5-T
 R.T.: 10.353 min
 Delta R.T.: -0.003 min
 Response: 3952961348
 Conc: 278.00 ng/ml



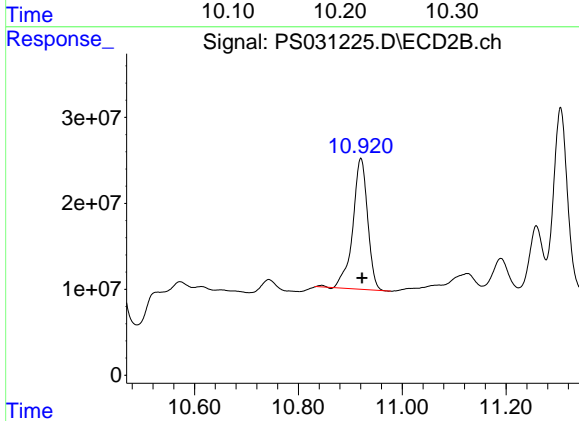
#13 2,4-DB

R.T.: 10.208 min
 Delta R.T.: -0.004 min
 Response: 659619267
 Conc: 220.62 ng/ml

Instrument :
 ECD_S
 ClientSampleId :
 OU4-TS-36-071725MSD

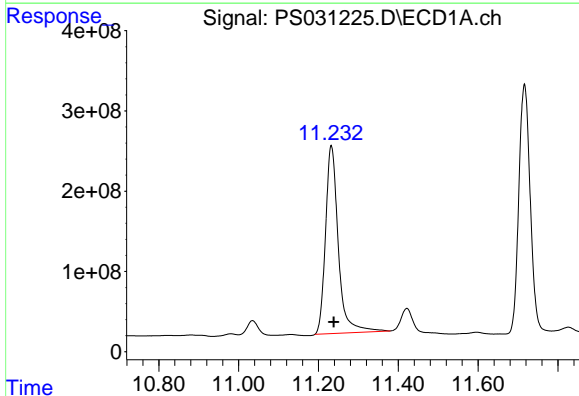
Manual Integrations
 APPROVED

Reviewed By :Yogesh Patel 07/25/2025
 Supervised By :mohammad ahmed 07/26/2025



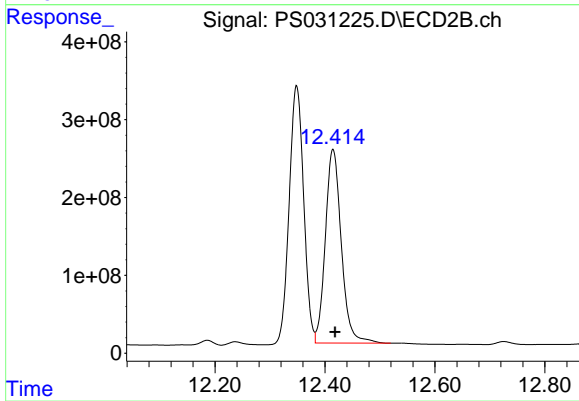
#13 2,4-DB

R.T.: 10.920 min
 Delta R.T.: -0.002 min
 Response: 301954502
 Conc: 257.97 ng/ml



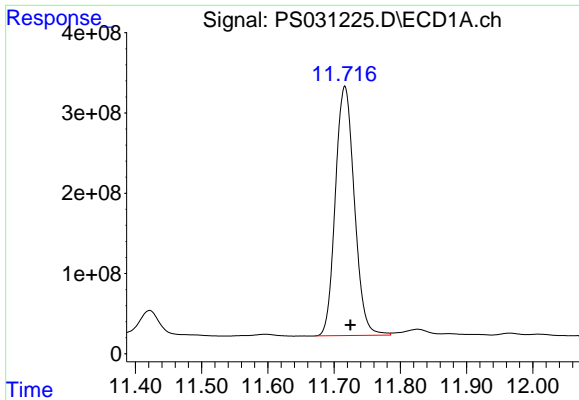
#15 Picloram

R.T.: 11.232 min
 Delta R.T.: -0.007 min
 Response: 5206902688
 Conc: 260.26 ng/ml



#15 Picloram

R.T.: 12.415 min
 Delta R.T.: -0.004 min
 Response: 5023983370
 Conc: 201.81 ng/ml



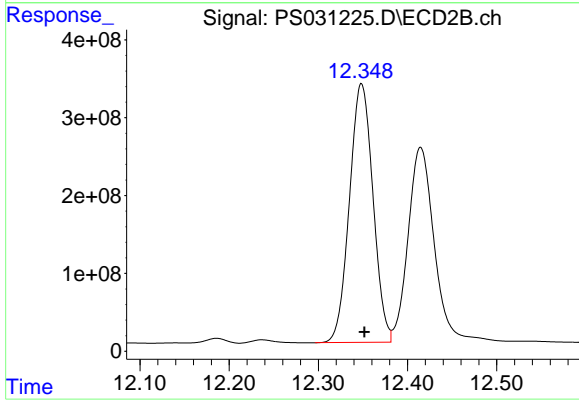
#16 DCPA

R.T.: 11.716 min
 Delta R.T.: -0.008 min
 Response: 6190964117
 Conc: 215.76 ng/ml

Instrument :
 ECD_S
 ClientSampleId :
 OU4-TS-36-071725MSD

Manual Integrations
 APPROVED

Reviewed By :Yogesh Patel 07/25/2025
 Supervised By :mohammad ahmed 07/26/2025



#16 DCPA

R.T.: 12.348 min
 Delta R.T.: -0.004 min
 Response: 6094344272
 Conc: 264.56 ng/ml m