

Data Path : Z:\pestpcbsrv\HPCHEM1\ECD\_S\Data\PS072125\  
 Data File : PS031158.D  
 Signal(s) : Signal #1: ECD1A.ch Signal #2: ECD2B.ch  
 Acq On : 21 Jul 2025 15:26  
 Operator : AR\AJ  
 Sample : HSTDICC500  
 Misc :  
 ALS Vial : 4 Sample Multiplier: 1

Instrument :  
 ECD\_S  
 ClientSampleId :  
 HSTDICC500

Integration File signal 1: autoint1.e  
 Integration File signal 2: autoint2.e  
 Quant Time: Jul 22 03:09:42 2025  
 Quant Method : Z:\pestpcbsrv\HPCHEM1\ECD\_S\Method\PS072125.M  
 Quant Title : 8080.M  
 QLast Update : Tue Jul 22 02:56:38 2025  
 Response via : Initial Calibration  
 Integrator: ChemStation

Volume Inj. : 1 µl  
 Signal #1 Phase : ZB-MR1 Signal #2 Phase: ZB-MR2  
 Signal #1 Info : 30M x 0.32mm x0.5 Signal #2 Info : 30M x 0.32mm x 0.25µm

	Compound	RT#1	RT#2	Resp#1	Resp#2	ng/ml	ng/ml
-----							
System Monitoring Compounds							
4) S	2,4-DCAA	7.326	7.767	2018.8E6	519.9E6	475.156	526.012
Target Compounds							
1) T	Dalapon	2.690	2.705	2959.3E6	1321.5E6	478.152	474.374
2) T	3,5-DICHL...	6.487	6.714	2659.6E6	740.5E6	495.188	497.017
3) T	4-Nitroph...	7.125	7.301	767.9E6	829.3E6	478.348	464.714
5) T	DICAMBA	7.514	7.969	7996.5E6	3086.5E6	491.494	480.989
6) T	MCP P	7.694	8.066	467.8E6	100.3E6	45.447	46.925
7) T	MCPA	7.843	8.314	579.7E6	149.5E6	46.099	47.317
8) T	DICHLORPROP	8.226	8.689	1838.1E6	729.4E6	498.986	495.087
9) T	2,4-D	8.458	9.026	1795.7E6	819.0E6	491.384	494.516
10) T	Pentachlo...	8.763	9.548	29107.7E6	19707.8E6	507.927	493.167
11) T	2,4,5-TP ...	9.343	9.930	10820.5E6	7341.1E6	500.052	494.651
12) T	2,4,5-T	9.637	10.357	9577.2E6	6973.3E6	490.924	492.588
13) T	2,4-DB	10.214	10.925	1431.5E6	570.7E6	483.190	493.144
14) T	DINOSEB	11.428	11.309	7542.8E6	5427.1E6	489.222	482.587
15) T	Picloram	11.240	12.420	9521.9E6	12061.4E6	472.975	474.969
16) T	DCPA	11.726	12.353	14463.8E6	11492.2E6	510.682	496.241

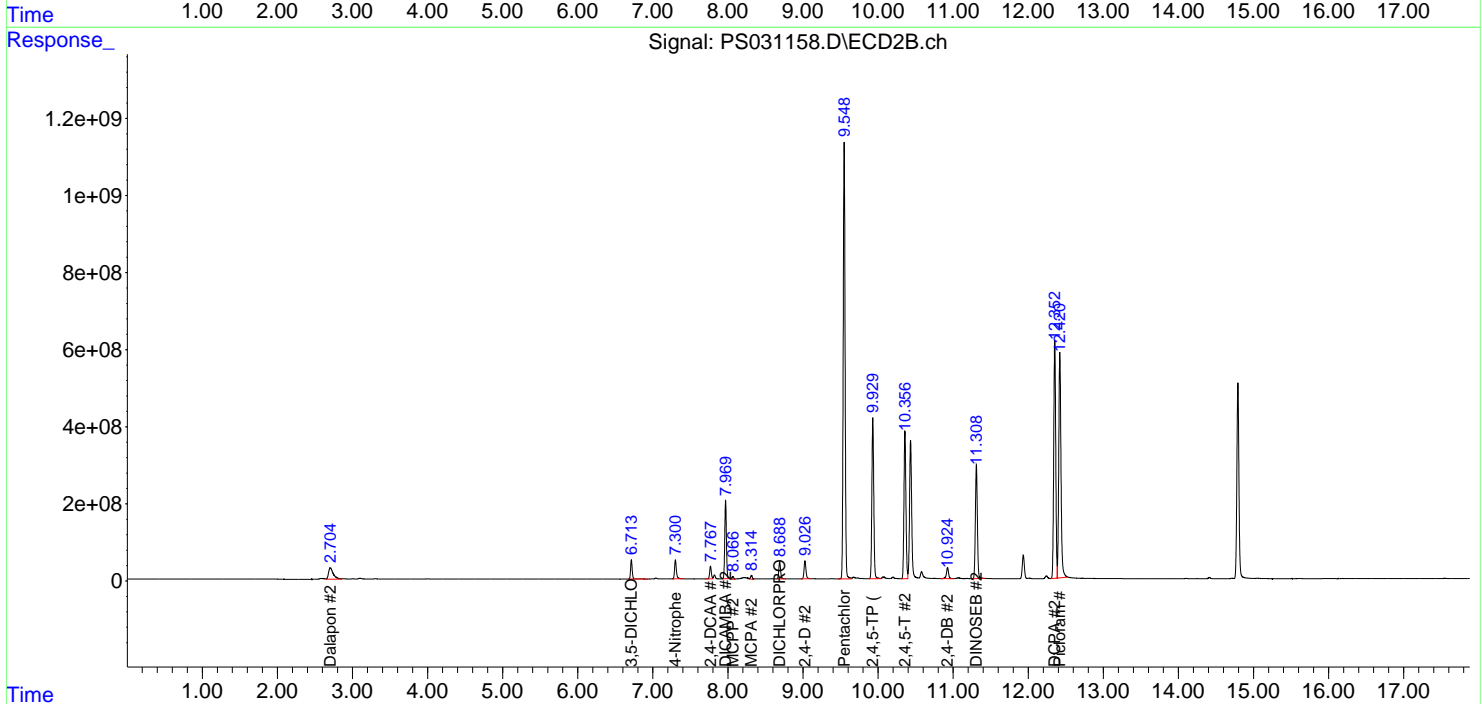
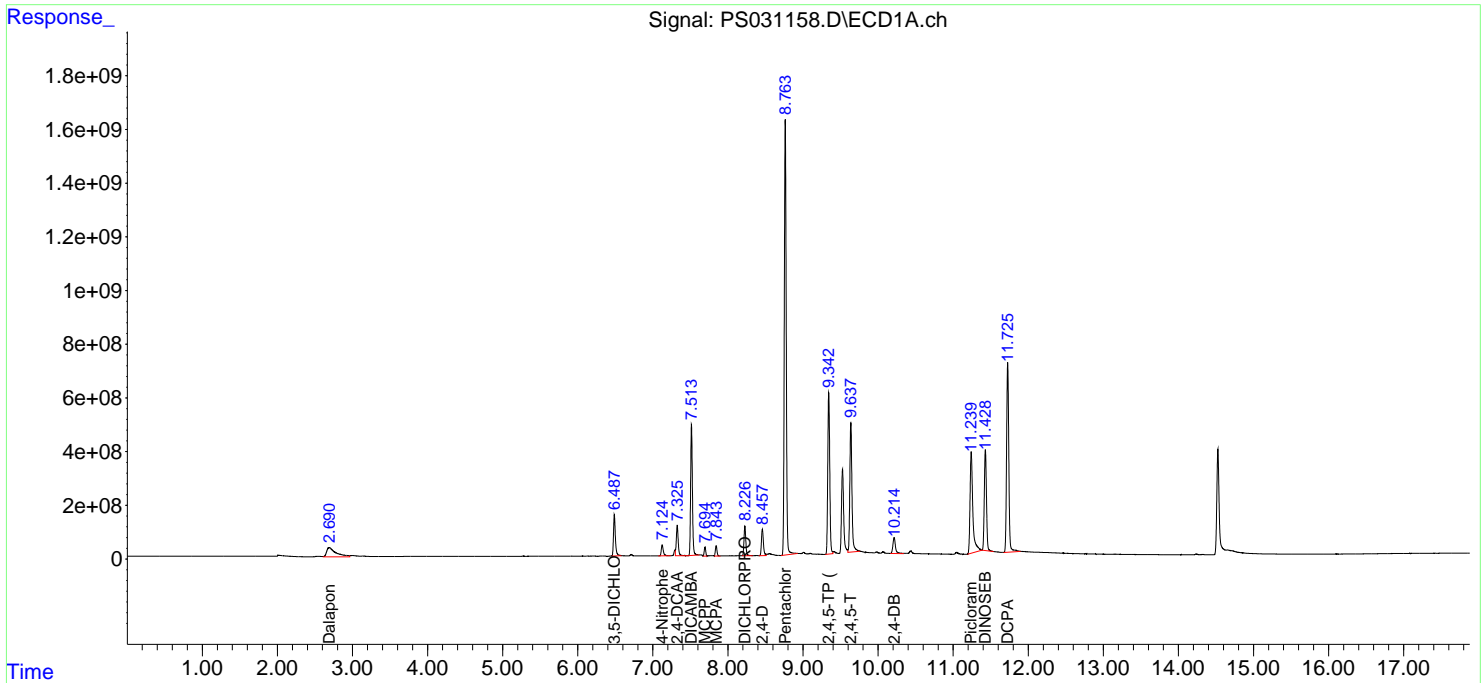
(f)=RT Delta > 1/2 Window (#)=Amounts differ by > 25% (m)=manual int.

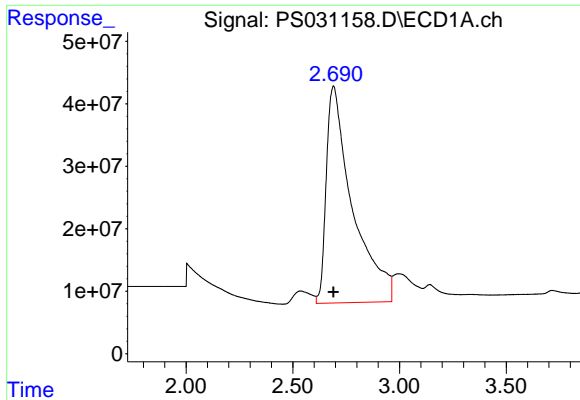
Data Path : Z:\pestpcbsrv\HPCHEM1\ECD\_S\Data\PS072125\  
 Data File : PS031158.D  
 Signal(s) : Signal #1: ECD1A.ch Signal #2: ECD2B.ch  
 Acq On : 21 Jul 2025 15:26  
 Operator : AR\AJ  
 Sample : HSTDICC500  
 Misc :  
 ALS Vial : 4 Sample Multiplier: 1

Instrument :  
 ECD\_S  
 ClientSampleId :  
 HSTDICC500

Integration File signal 1: autoint1.e  
 Integration File signal 2: autoint2.e  
 Quant Time: Jul 22 03:09:42 2025  
 Quant Method : Z:\pestpcbsrv\HPCHEM1\ECD\_S\Method\PS072125.M  
 Quant Title : 8080.M  
 QLast Update : Tue Jul 22 02:56:38 2025  
 Response via : Initial Calibration  
 Integrator: ChemStation

Volume Inj. : 1 µl  
 Signal #1 Phase : ZB-MR1 Signal #2 Phase: ZB-MR2  
 Signal #1 Info : 30M x 0.32mm x0.5 Signal #2 Info : 30M x 0.32mm x 0.25µm

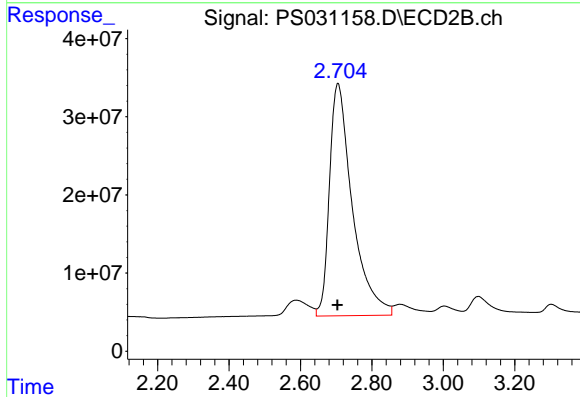




#1 Dalapon

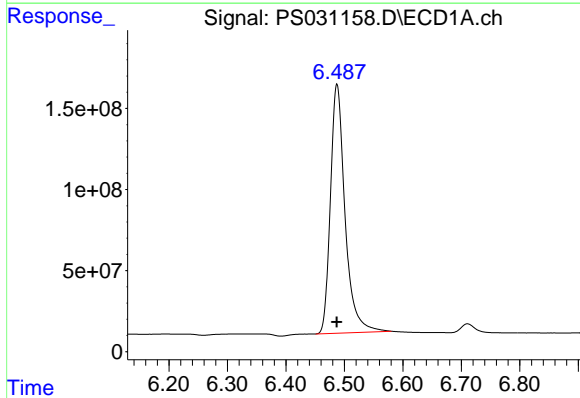
R.T.: 2.690 min  
 Delta R.T.: 0.000 min  
 Response: 2959298028  
 Conc: 478.15 ng/ml

Instrument :  
 ECD\_S  
 ClientSampleId :  
 HSTDICC500



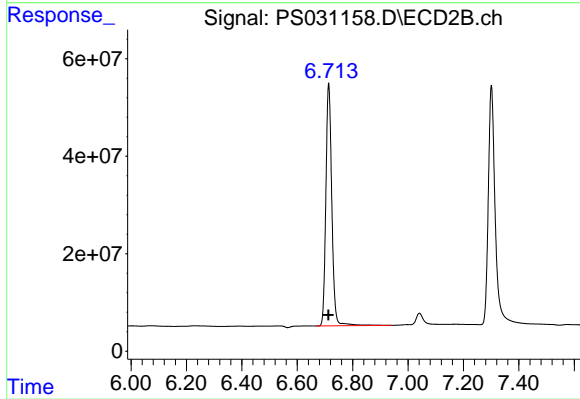
#1 Dalapon

R.T.: 2.705 min  
 Delta R.T.: 0.001 min  
 Response: 1321530235  
 Conc: 474.37 ng/ml



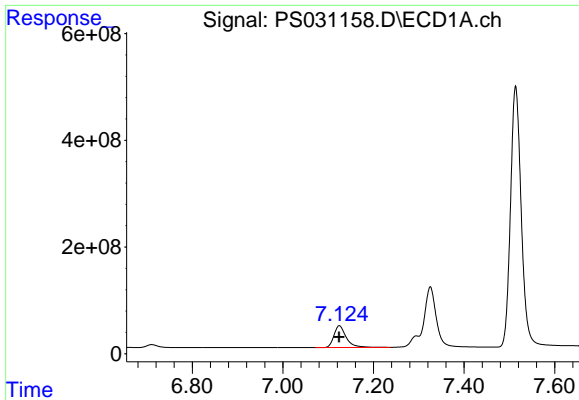
#2 3,5-DICHLOROBENZOIC ACID

R.T.: 6.487 min  
 Delta R.T.: 0.000 min  
 Response: 2659579107  
 Conc: 495.19 ng/ml



#2 3,5-DICHLOROBENZOIC ACID

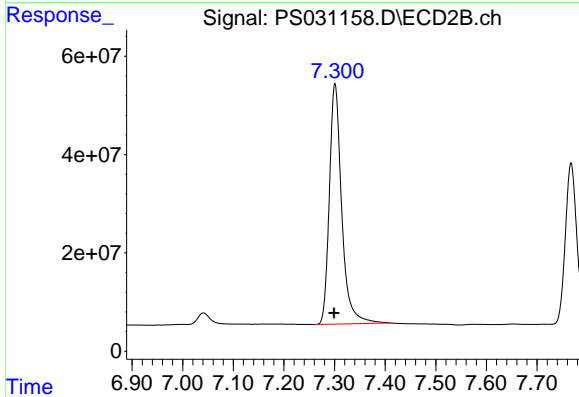
R.T.: 6.714 min  
 Delta R.T.: 0.000 min  
 Response: 740511149  
 Conc: 497.02 ng/ml



#3 4-Nitrophenol

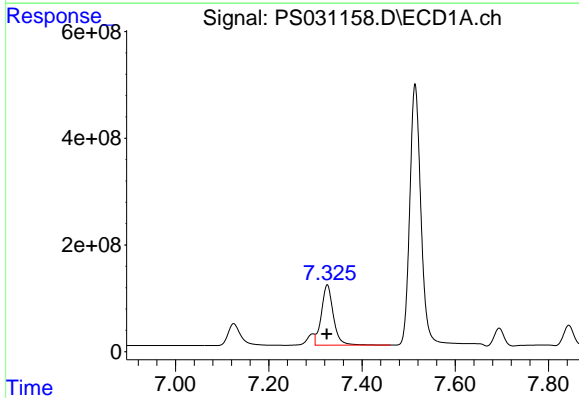
R.T.: 7.125 min  
 Delta R.T.: 0.000 min  
 Response: 767894643  
 Conc: 478.35 ng/ml

Instrument :  
 ECD\_S  
 ClientSampleId :  
 HSTDICC500



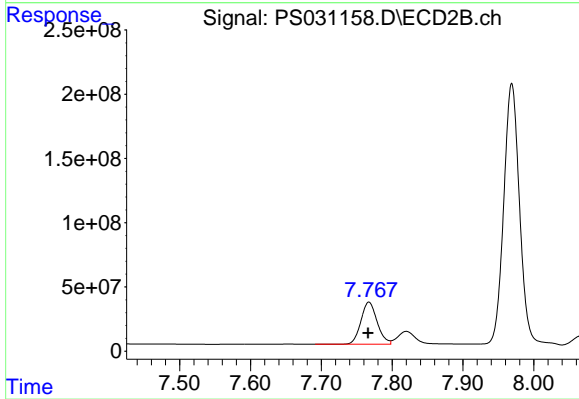
#3 4-Nitrophenol

R.T.: 7.301 min  
 Delta R.T.: 0.002 min  
 Response: 829273311  
 Conc: 464.71 ng/ml



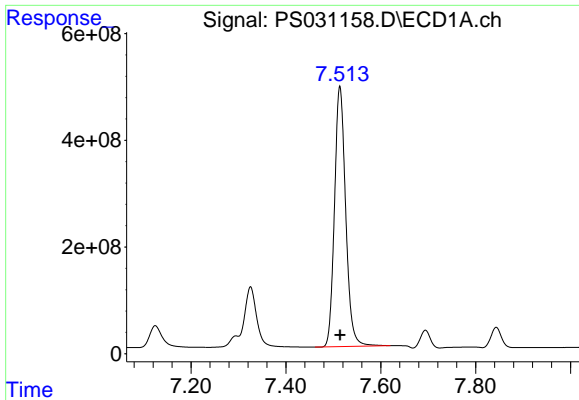
#4 2,4-DCAA

R.T.: 7.326 min  
 Delta R.T.: 0.001 min  
 Response: 2018803577  
 Conc: 475.16 ng/ml



#4 2,4-DCAA

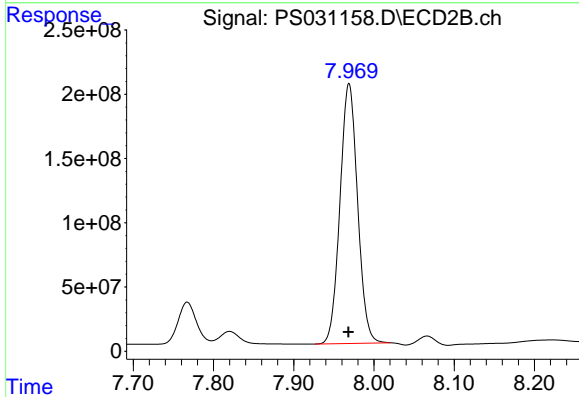
R.T.: 7.767 min  
 Delta R.T.: 0.001 min  
 Response: 519906660  
 Conc: 526.01 ng/ml



#5 DICAMBA

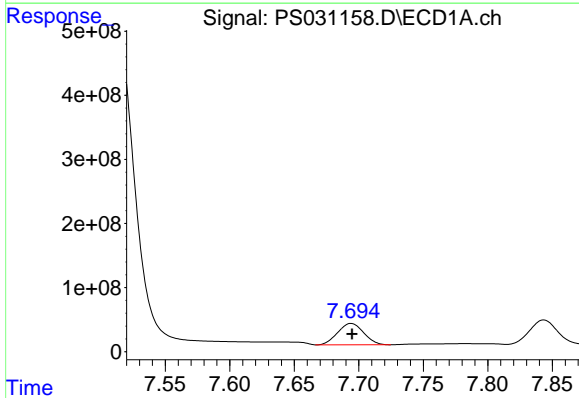
R.T.: 7.514 min  
 Delta R.T.: 0.000 min  
 Response: 7996510974  
 Conc: 491.49 ng/ml

Instrument :  
 ECD\_S  
 ClientSampleId :  
 HSTDICC500



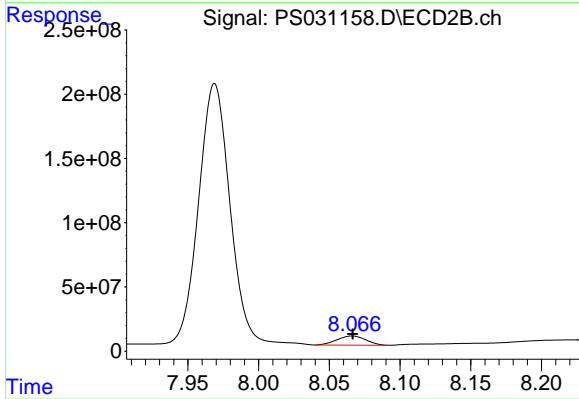
#5 DICAMBA

R.T.: 7.969 min  
 Delta R.T.: 0.001 min  
 Response: 3086481070  
 Conc: 480.99 ng/ml



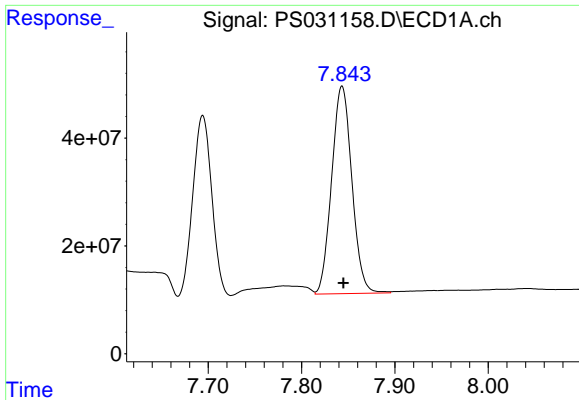
#6 MCP

R.T.: 7.694 min  
 Delta R.T.: 0.000 min  
 Response: 467826179  
 Conc: 45.45 ug/ml



#6 MCP

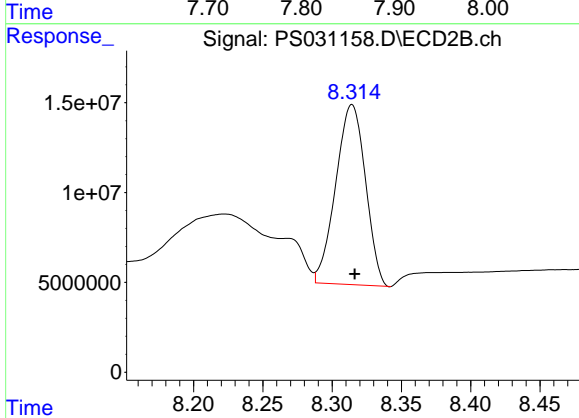
R.T.: 8.066 min  
 Delta R.T.: 0.000 min  
 Response: 100345918  
 Conc: 46.92 ug/ml



#7 MCPA

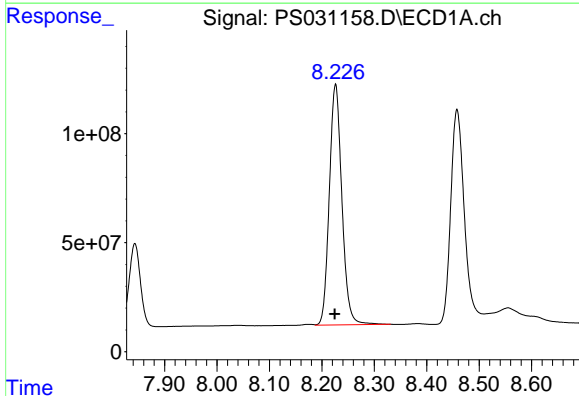
R.T.: 7.843 min  
 Delta R.T.: -0.001 min  
 Response: 579732469  
 Conc: 46.10 ug/ml

Instrument :  
 ECD\_S  
 ClientSampleId :  
 HSTDICC500



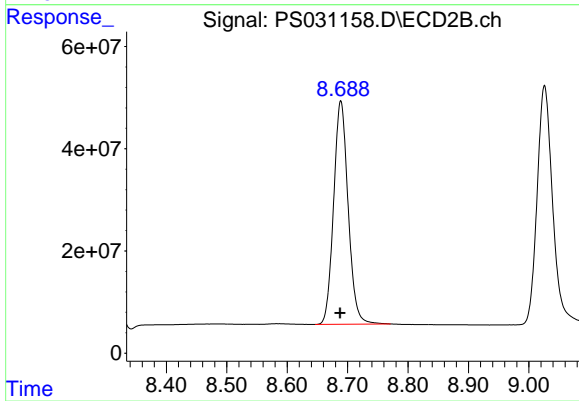
#7 MCPA

R.T.: 8.314 min  
 Delta R.T.: -0.002 min  
 Response: 149500104  
 Conc: 47.32 ug/ml



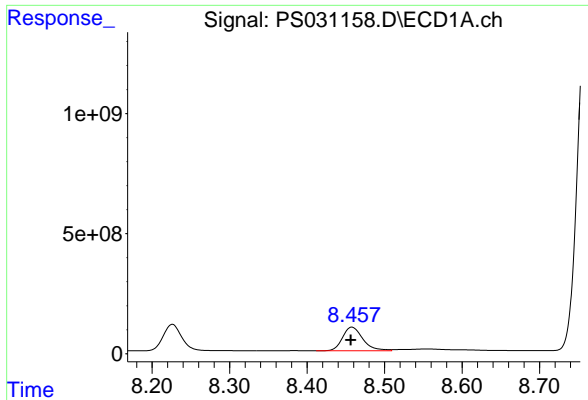
#8 DICHLORPROP

R.T.: 8.226 min  
 Delta R.T.: 0.002 min  
 Response: 1838072799  
 Conc: 498.99 ng/ml



#8 DICHLORPROP

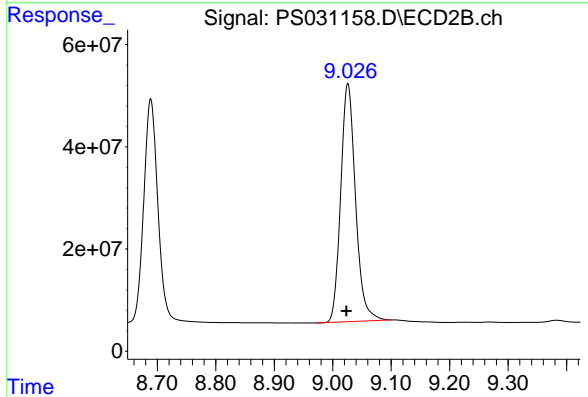
R.T.: 8.689 min  
 Delta R.T.: 0.001 min  
 Response: 729443662  
 Conc: 495.09 ng/ml



#9 2,4-D

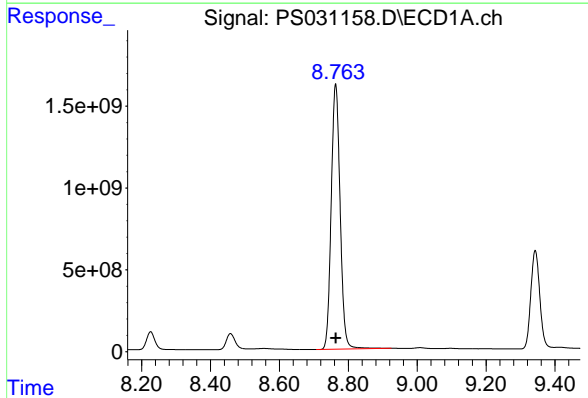
R.T.: 8.458 min  
 Delta R.T.: 0.001 min  
 Response: 1795744990  
 Conc: 491.38 ng/ml

Instrument :  
 ECD\_S  
 ClientSampleId :  
 HSTDICC500



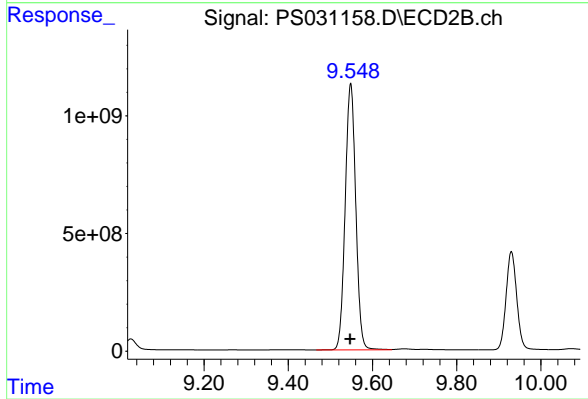
#9 2,4-D

R.T.: 9.026 min  
 Delta R.T.: 0.002 min  
 Response: 819019953  
 Conc: 494.52 ng/ml



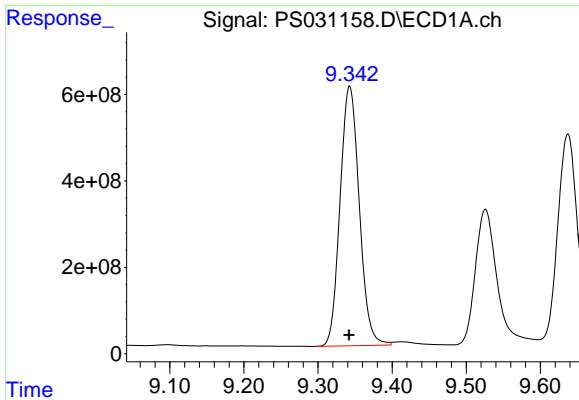
#10 Pentachlorophenol

R.T.: 8.763 min  
 Delta R.T.: 0.000 min  
 Response: 29107710379  
 Conc: 507.93 ng/ml



#10 Pentachlorophenol

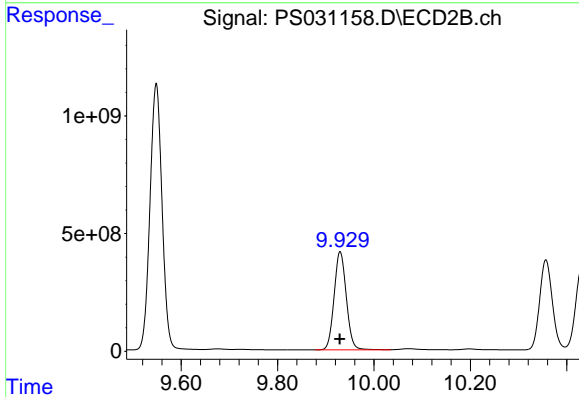
R.T.: 9.548 min  
 Delta R.T.: 0.001 min  
 Response: 19707796449  
 Conc: 493.17 ng/ml



#11 2,4,5-TP (SILVEX)

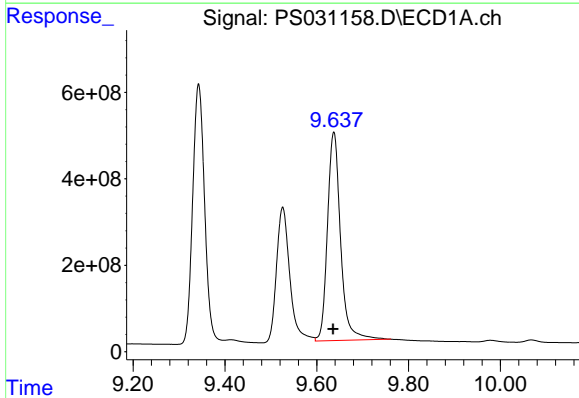
R.T.: 9.343 min  
 Delta R.T.: 0.000 min  
 Response: 10820483706  
 Conc: 500.05 ng/ml

Instrument :  
 ECD\_S  
 ClientSampleId :  
 HSTDICC500



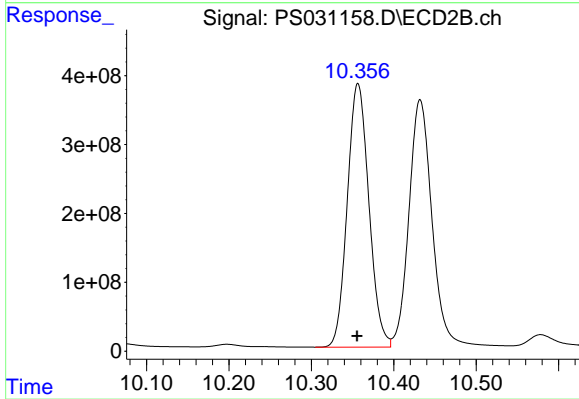
#11 2,4,5-TP (SILVEX)

R.T.: 9.930 min  
 Delta R.T.: 0.001 min  
 Response: 7341058970  
 Conc: 494.65 ng/ml



#12 2,4,5-T

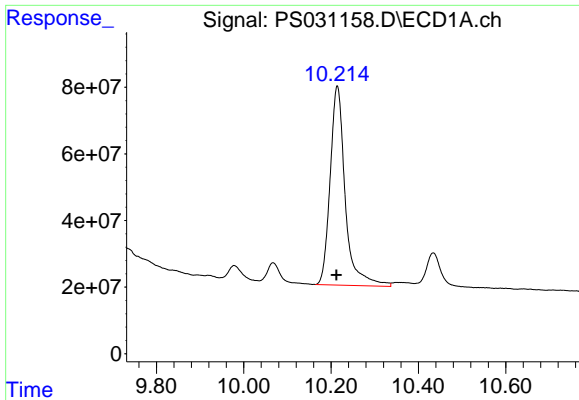
R.T.: 9.637 min  
 Delta R.T.: 0.001 min  
 Response: 9577192088  
 Conc: 490.92 ng/ml



#12 2,4,5-T

R.T.: 10.357 min  
 Delta R.T.: 0.001 min  
 Response: 6973310939  
 Conc: 492.59 ng/ml

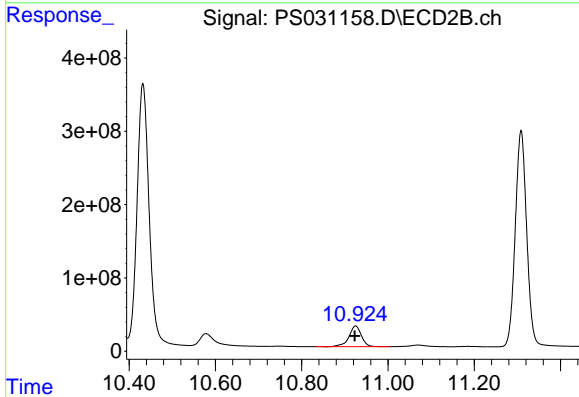




#13 2,4-DB

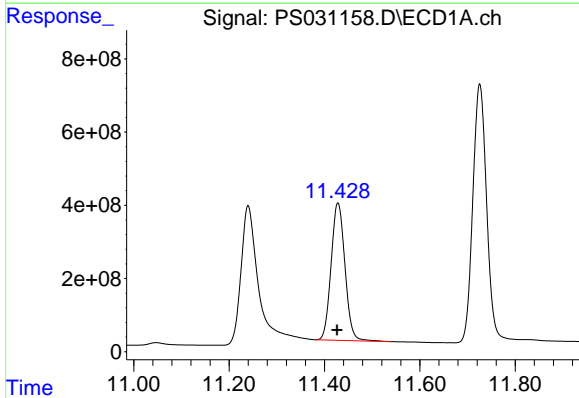
R.T.: 10.214 min  
 Delta R.T.: 0.002 min  
 Response: 1431511568  
 Conc: 483.19 ng/ml

Instrument :  
 ECD\_S  
 ClientSampleId :  
 HSTDICC500



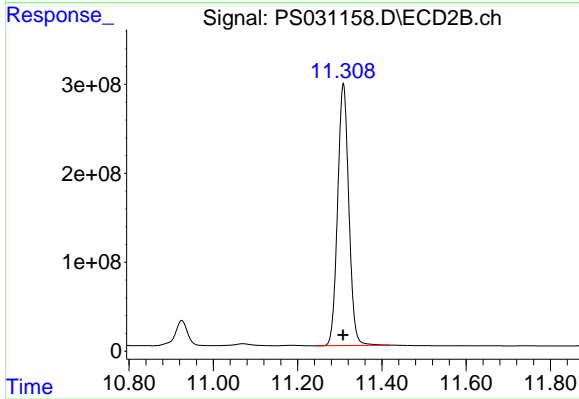
#13 2,4-DB

R.T.: 10.925 min  
 Delta R.T.: 0.002 min  
 Response: 570663468  
 Conc: 493.14 ng/ml



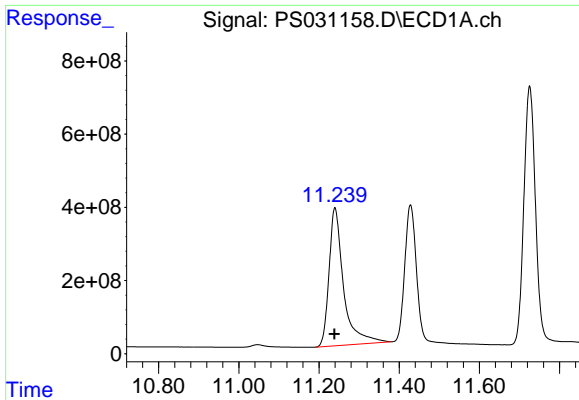
#14 DINOSEB

R.T.: 11.428 min  
 Delta R.T.: 0.002 min  
 Response: 7542802456  
 Conc: 489.22 ng/ml



#14 DINOSEB

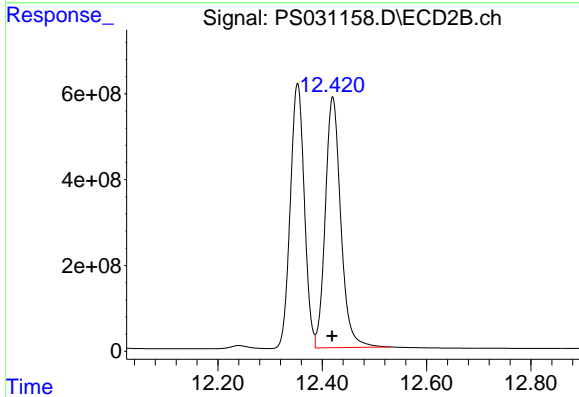
R.T.: 11.309 min  
 Delta R.T.: 0.000 min  
 Response: 5427075463  
 Conc: 482.59 ng/ml



#15 Picloram

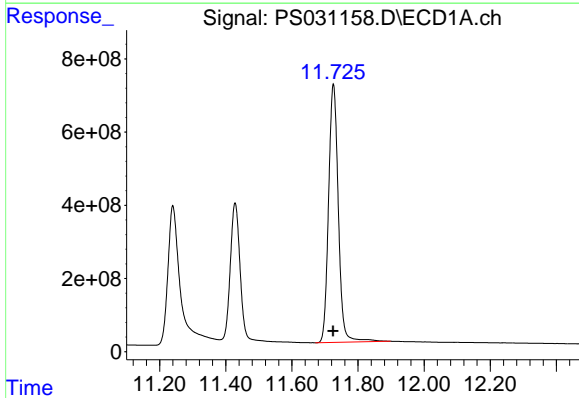
R.T.: 11.240 min  
 Delta R.T.: 0.001 min  
 Response: 9521922595  
 Conc: 472.97 ng/ml

Instrument :  
 ECD\_S  
 ClientSampleId :  
 HSTDICC500



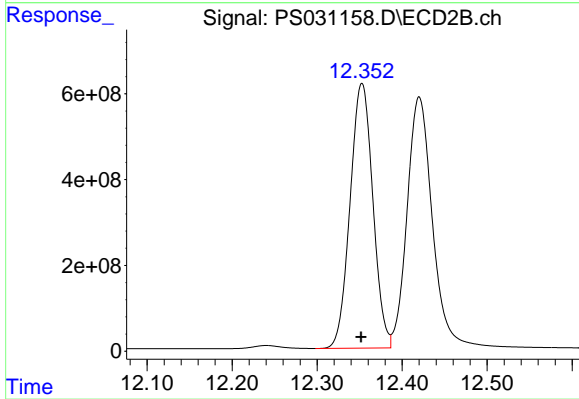
#15 Picloram

R.T.: 12.420 min  
 Delta R.T.: 0.002 min  
 Response: 12061381092  
 Conc: 474.97 ng/ml



#16 DCPA

R.T.: 11.726 min  
 Delta R.T.: 0.001 min  
 Response: 14463775237  
 Conc: 510.68 ng/ml



#16 DCPA

R.T.: 12.353 min  
 Delta R.T.: 0.001 min  
 Response: 11492194583  
 Conc: 496.24 ng/ml