

Data Path : Z:\pestpcbsrv\HPCHEM1\ECD\_S\Data\PS072425\  
 Data File : PS031233.D  
 Signal(s) : Signal #1: ECD1A.ch Signal #2: ECD2B.ch  
 Acq On : 24 Jul 2025 18:39  
 Operator : AR\AJ  
 Sample : HSTDCCC750  
 Misc :  
 ALS Vial : 35 Sample Multiplier: 1

Instrument :  
 ECD\_S  
 ClientSampleId :  
 HSTDCCC750

Integration File signal 1: autoint1.e  
 Integration File signal 2: autoint2.e  
 Quant Time: Jul 25 02:14:21 2025  
 Quant Method : Z:\pestpcbsrv\HPCHEM1\ECD\_S\Method\PS072125.M  
 Quant Title : 8080.M  
 QLast Update : Tue Jul 22 03:18:42 2025  
 Response via : Initial Calibration  
 Integrator: ChemStation

Volume Inj. : 1 µl  
 Signal #1 Phase : ZB-MR1 Signal #2 Phase: ZB-MR2  
 Signal #1 Info : 30M x 0.32mm x0.5 Signal #2 Info : 30M x 0.32mm x 0.25µm

Compound	RT#1	RT#2	Resp#1	Resp#2	ng/ml	ng/ml
System Monitoring Compounds						
4) S 2,4-DCAA	7.319	7.764	2897.4E6	704.2E6	666.345	693.771
Target Compounds						
1) T Dalapon	2.687	2.704	3646.8E6	1685.9E6	581.355	594.302
2) T 3,5-DICHL...	6.482	6.711	3487.2E6	965.5E6	631.428	626.964
3) T 4-Nitroph...	7.119	7.298	1161.6E6	1119.3E6	704.548	618.645
5) T DICAMBA	7.509	7.966	9918.8E6	4200.1E6	601.248	650.842
6) T MCPP	7.690	8.065	639.6E6	128.0E6	63.900	61.597
7) T MCPA	7.840	8.313	831.6E6	199.2E6	66.456	63.134
8) T DICHLORPROP	8.219	8.685	2628.7E6	1015.3E6	687.792	670.244
9) T 2,4-D	8.451	9.021	2723.9E6	1183.1E6	729.306	696.612
10) T Pentachlo...	8.758	9.545	39512.4E6	26526.7E6	723.384	678.760
11) T 2,4,5-TP ...	9.335	9.926	15136.6E6	10005.9E6	689.481	671.801
12) T 2,4,5-T	9.629	10.352	14005.9E6	9234.0E6	717.231	649.390
13) T 2,4-DB	10.207	10.920	2059.8E6	764.1E6	688.914	652.753
14) T DINOSEB	11.419	11.305	9704.0E6	6972.8E6	623.271	616.949
15) T Picloram	11.229	12.415	15822.6E6	17205.5E6	790.871	691.121
16) T DCPA	11.716	12.349	19417.2E6	15356.5E6	676.712	666.629

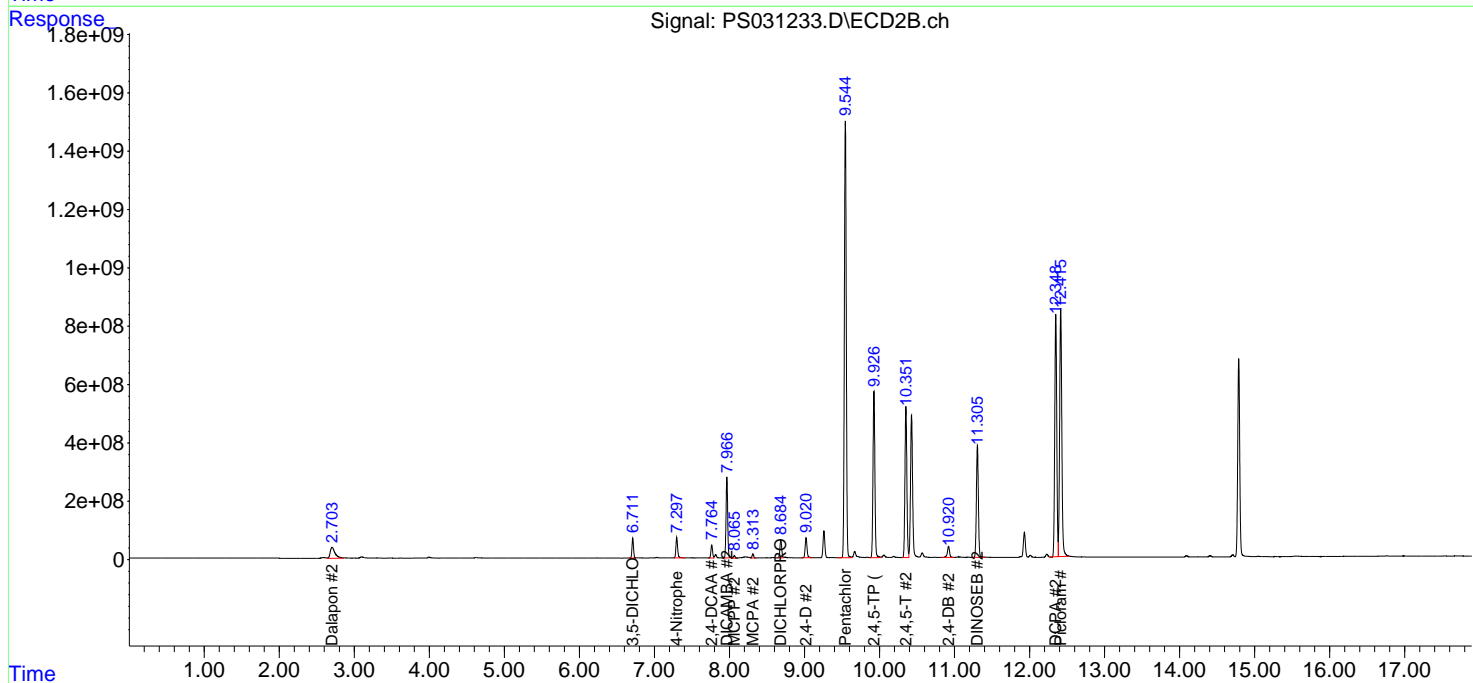
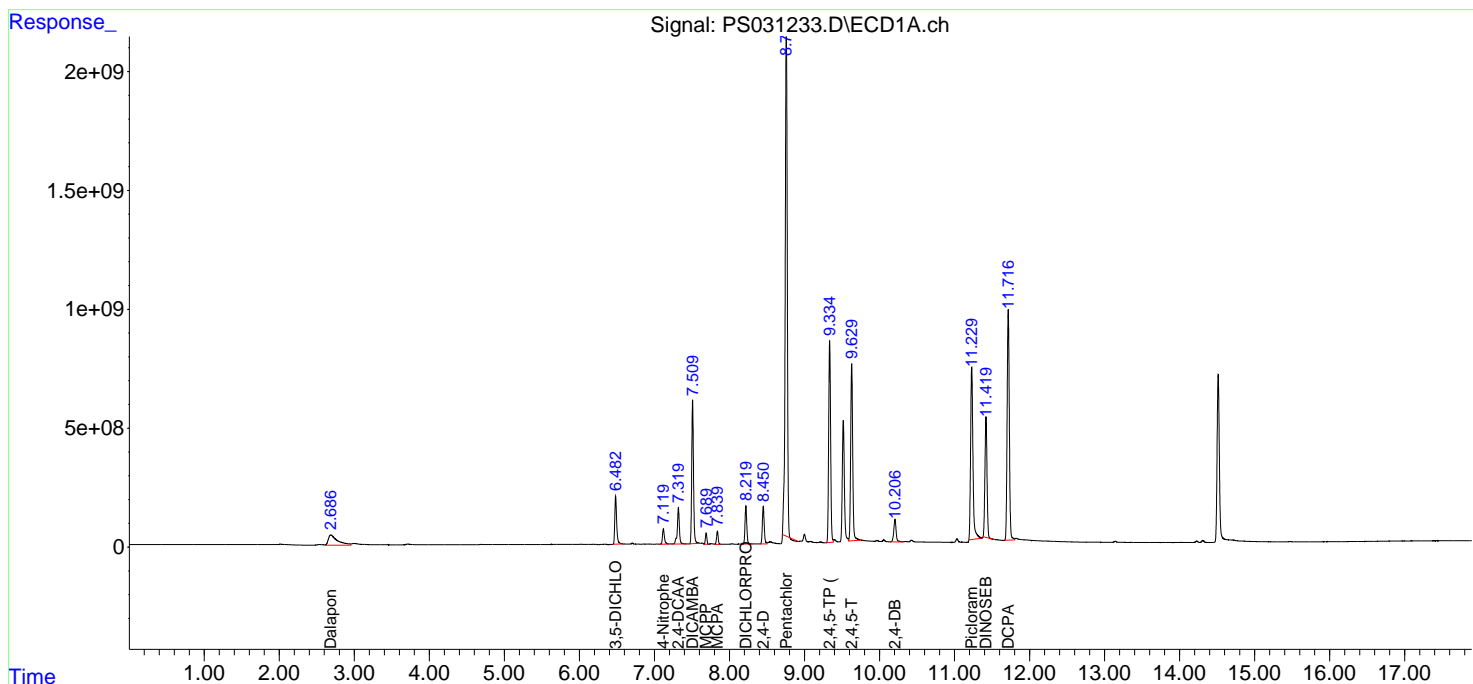
(f)=RT Delta > 1/2 Window (#)=Amounts differ by > 25% (m)=manual int.

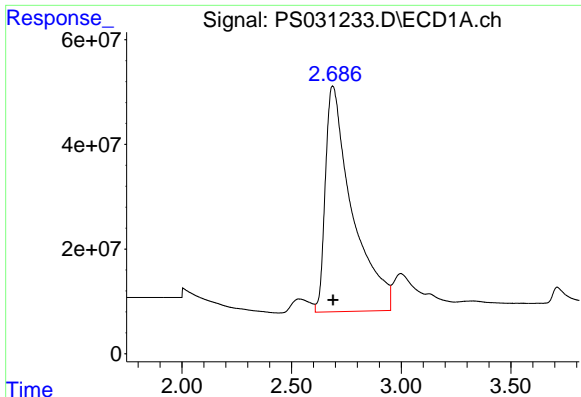
Data Path : Z:\pestpcbsrv\HPCHEM1\ECD\_S\Data\PS072425\  
 Data File : PS031233.D  
 Signal(s) : Signal #1: ECD1A.ch Signal #2: ECD2B.ch  
 Acq On : 24 Jul 2025 18:39  
 Operator : AR\AJ  
 Sample : HSTDCCC750  
 Misc :  
 ALS Vial : 35 Sample Multiplier: 1

Instrument :  
 ECD\_S  
 ClientSampleId :  
 HSTDCCC750

Integration File signal 1: autoint1.e  
 Integration File signal 2: autoint2.e  
 Quant Time: Jul 25 02:14:21 2025  
 Quant Method : Z:\pestpcbsrv\HPCHEM1\ECD\_S\Method\PS072125.M  
 Quant Title : 8080.M  
 QLast Update : Tue Jul 22 03:18:42 2025  
 Response via : Initial Calibration  
 Integrator: ChemStation

Volume Inj. : 1 µl  
 Signal #1 Phase : ZB-MR1 Signal #2 Phase: ZB-MR2  
 Signal #1 Info : 30M x 0.32mm x0.5 Signal #2 Info : 30M x 0.32mm x 0.25µm

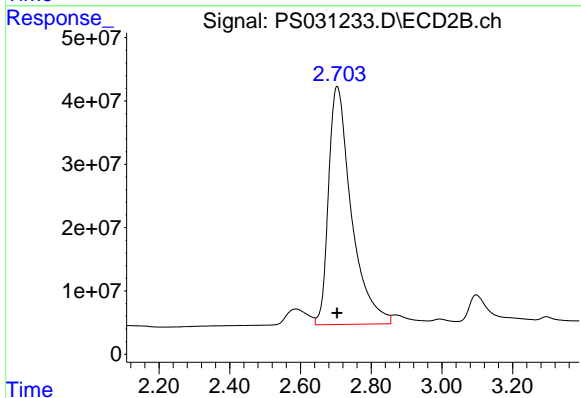




#1 Dalapon

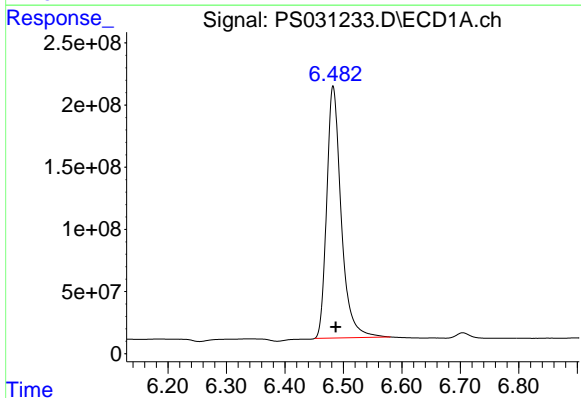
R.T.: 2.687 min  
 Delta R.T.: -0.003 min  
 Response: 3646786474  
 Conc: 581.36 ng/ml

Instrument :  
 ECD\_S  
 ClientSampleId :  
 HSTDCCC750



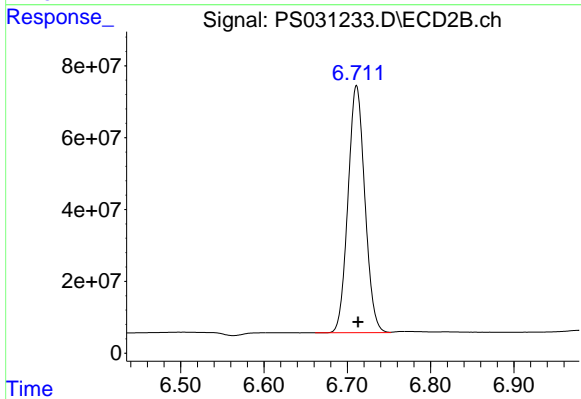
#1 Dalapon

R.T.: 2.704 min  
 Delta R.T.: 0.000 min  
 Response: 1685879056  
 Conc: 594.30 ng/ml



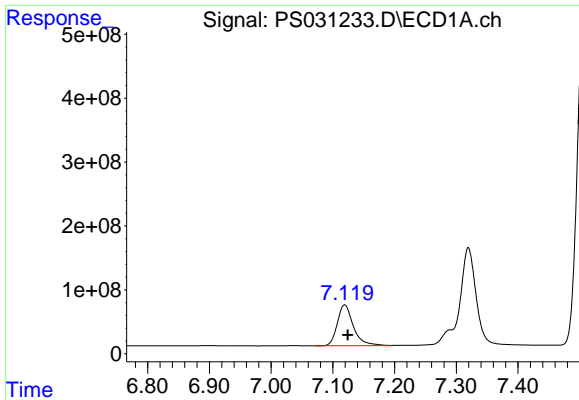
#2 3,5-DICHLOROBENZOIC ACID

R.T.: 6.482 min  
 Delta R.T.: -0.004 min  
 Response: 3487217484  
 Conc: 631.43 ng/ml



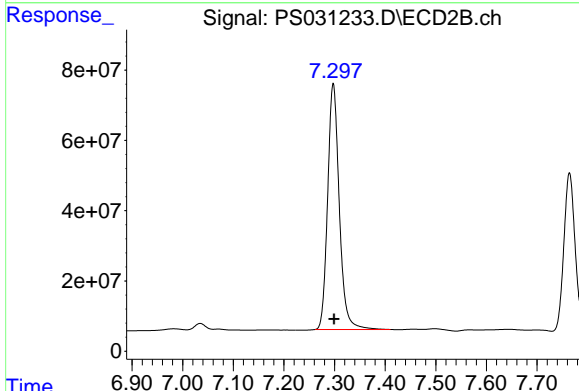
#2 3,5-DICHLOROBENZOIC ACID

R.T.: 6.711 min  
 Delta R.T.: -0.002 min  
 Response: 965457798  
 Conc: 626.96 ng/ml

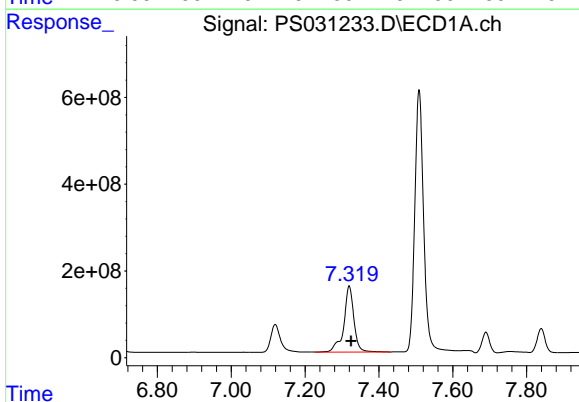


#3 4-Nitrophenol  
 R.T.: 7.119 min  
 Delta R.T.: -0.005 min  
 Response: 1161648350  
 Conc: 704.55 ng/ml

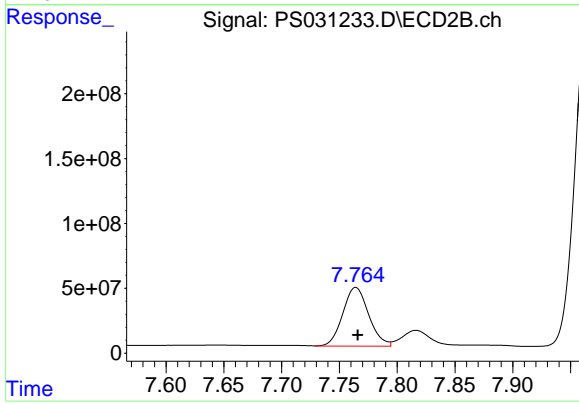
Instrument :  
 ECD\_S  
 ClientSampleId :  
 HSTDCCC750



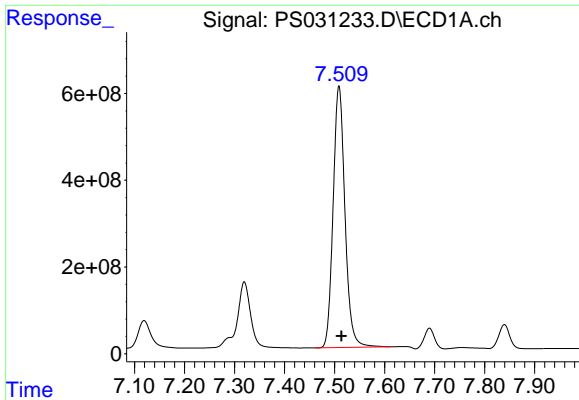
#3 4-Nitrophenol  
 R.T.: 7.298 min  
 Delta R.T.: -0.002 min  
 Response: 1119324899  
 Conc: 618.64 ng/ml



#4 2,4-DCAA  
 R.T.: 7.319 min  
 Delta R.T.: -0.005 min  
 Response: 2897435123  
 Conc: 666.34 ng/ml



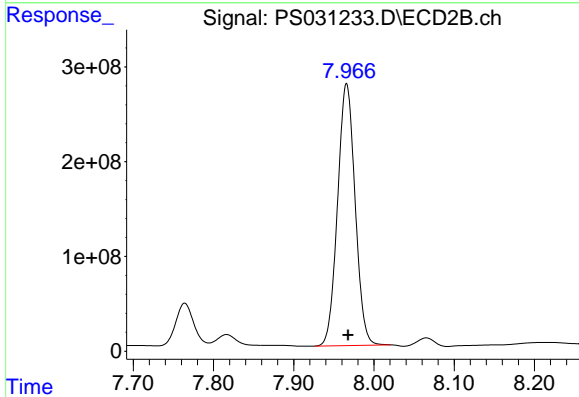
#4 2,4-DCAA  
 R.T.: 7.764 min  
 Delta R.T.: -0.002 min  
 Response: 704155508  
 Conc: 693.77 ng/ml



#5 DICAMBA

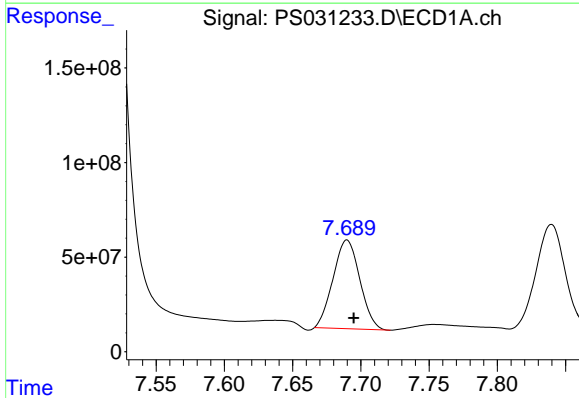
R.T.: 7.509 min  
 Delta R.T.: -0.005 min  
 Response: 9918771681  
 Conc: 601.25 ng/ml

Instrument :  
 ECD\_S  
 ClientSampleId :  
 HSTDCCC750



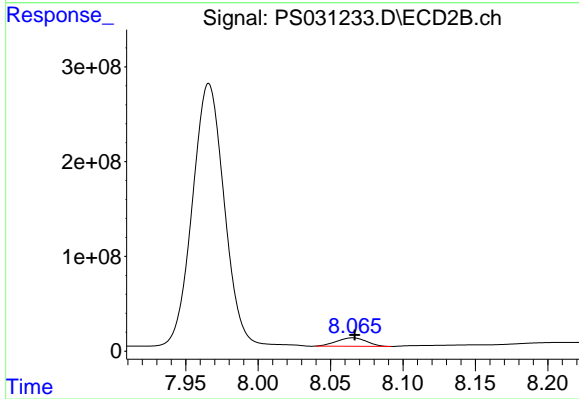
#5 DICAMBA

R.T.: 7.966 min  
 Delta R.T.: -0.002 min  
 Response: 4200124781  
 Conc: 650.84 ng/ml



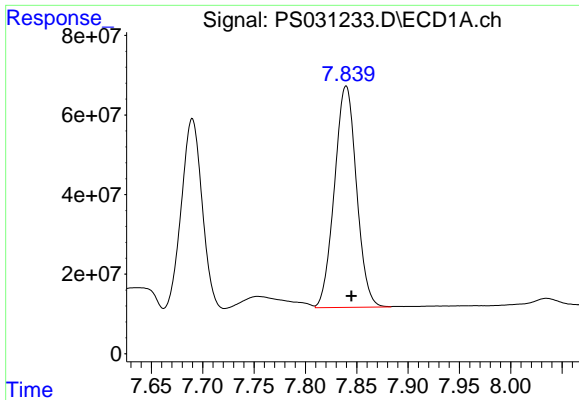
#6 MCP

R.T.: 7.690 min  
 Delta R.T.: -0.005 min  
 Response: 639646471  
 Conc: 63.90 ug/ml



#6 MCP

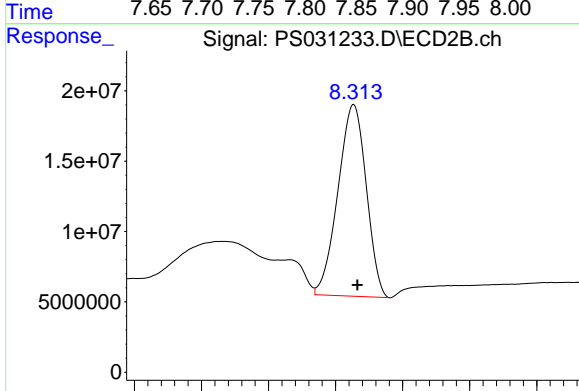
R.T.: 8.065 min  
 Delta R.T.: -0.001 min  
 Response: 127986691  
 Conc: 61.60 ug/ml



#7 MCPA

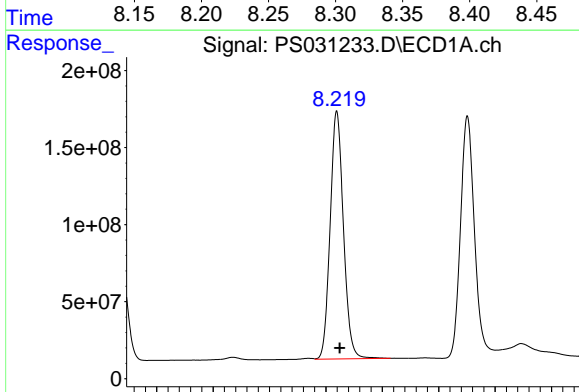
R.T.: 7.840 min  
 Delta R.T.: -0.005 min  
 Response: 831645162  
 Conc: 66.46 ug/ml

Instrument :  
 ECD\_S  
 ClientSampleId :  
 HSTDCCC750



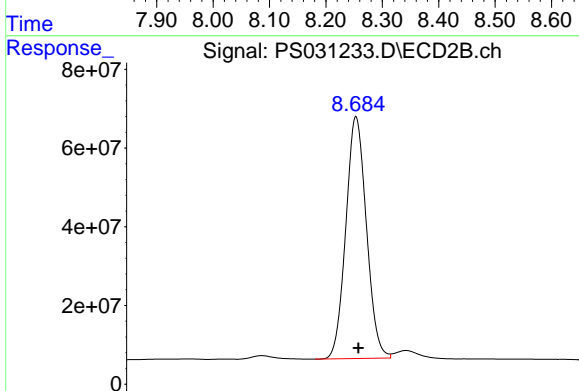
#7 MCPA

R.T.: 8.313 min  
 Delta R.T.: -0.003 min  
 Response: 199200038  
 Conc: 63.13 ug/ml



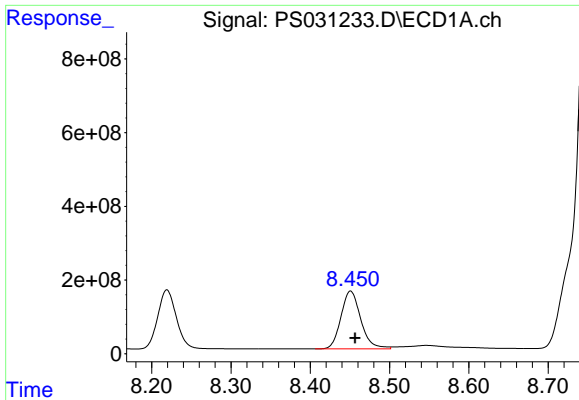
#8 DICHLORPROP

R.T.: 8.219 min  
 Delta R.T.: -0.005 min  
 Response: 2628708493  
 Conc: 687.79 ng/ml



#8 DICHLORPROP

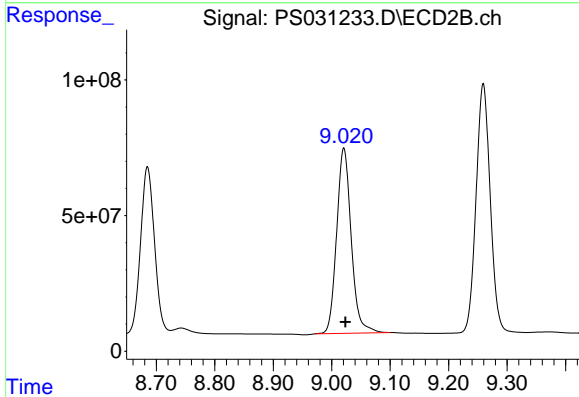
R.T.: 8.685 min  
 Delta R.T.: -0.003 min  
 Response: 1015326356  
 Conc: 670.24 ng/ml



#9 2,4-D

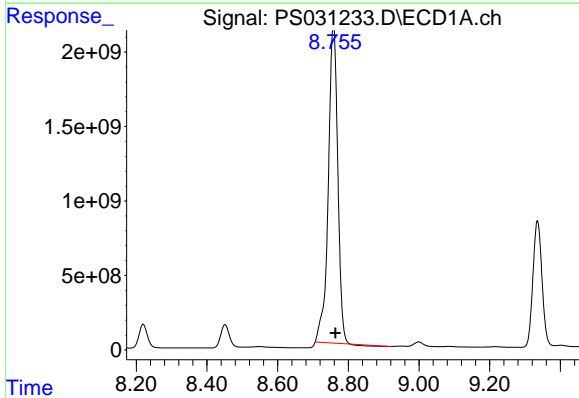
R.T.: 8.451 min  
 Delta R.T.: -0.006 min  
 Response: 2723897944  
 Conc: 729.31 ng/ml

Instrument :  
 ECD\_S  
 ClientSampleId :  
 HSTDCCC750



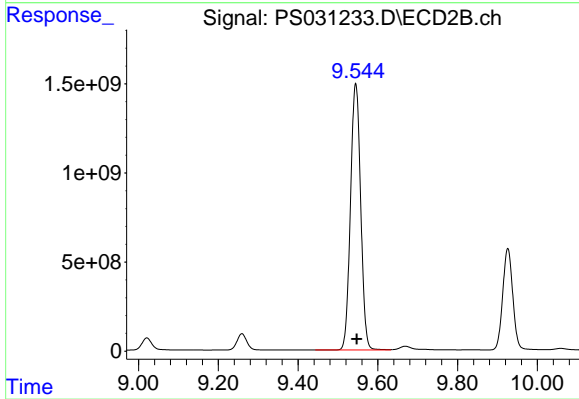
#9 2,4-D

R.T.: 9.021 min  
 Delta R.T.: -0.003 min  
 Response: 1183069685  
 Conc: 696.61 ng/ml



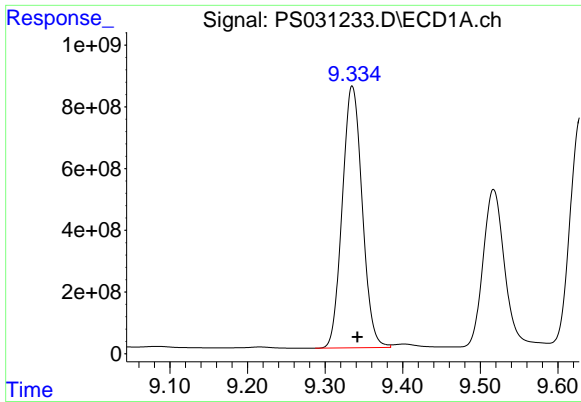
#10 Pentachlorophenol

R.T.: 8.758 min  
 Delta R.T.: -0.006 min  
 Response: 39512363181  
 Conc: 723.38 ng/ml



#10 Pentachlorophenol

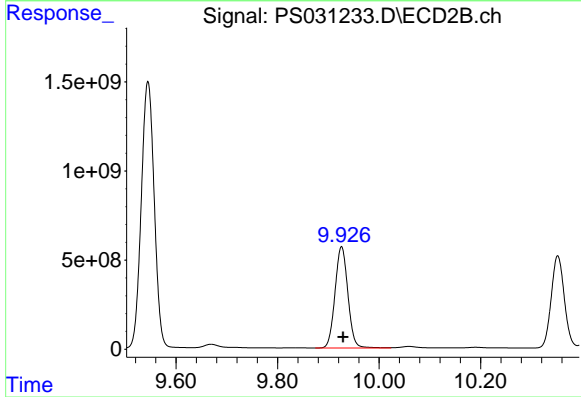
R.T.: 9.545 min  
 Delta R.T.: -0.003 min  
 Response: 26526744051  
 Conc: 678.76 ng/ml



#11 2,4,5-TP (SILVEX)

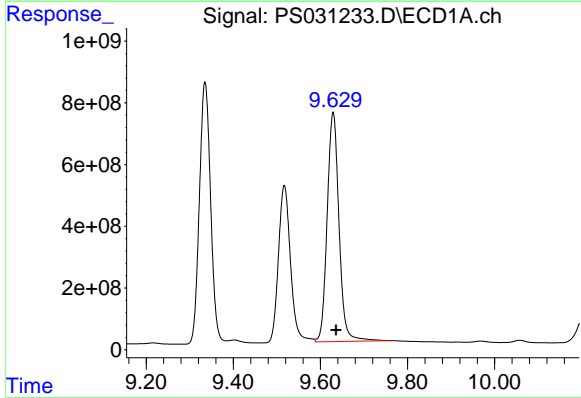
R.T.: 9.335 min  
 Delta R.T.: -0.007 min  
 Response: 15136567168  
 Conc: 689.48 ng/ml

Instrument :  
 ECD\_S  
 ClientSampleId :  
 HSTDCCC750



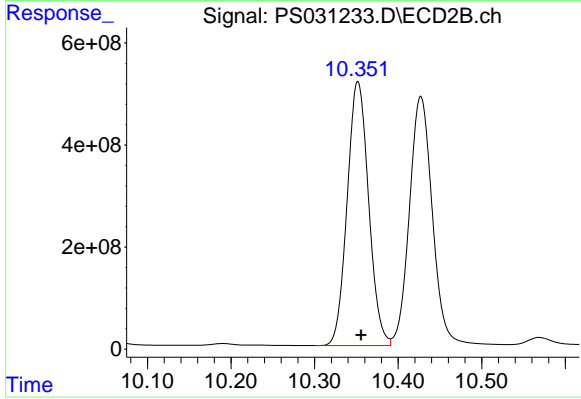
#11 2,4,5-TP (SILVEX)

R.T.: 9.926 min  
 Delta R.T.: -0.003 min  
 Response: 10005926582  
 Conc: 671.80 ng/ml



#12 2,4,5-T

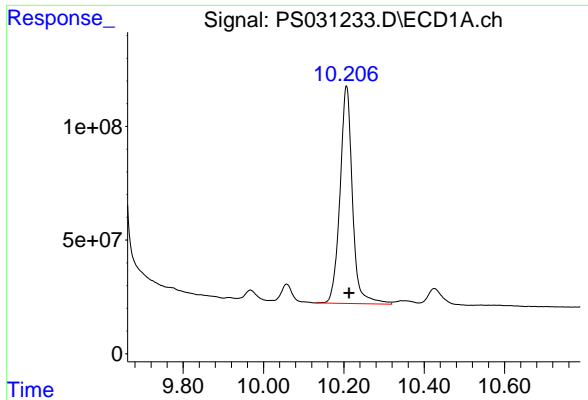
R.T.: 9.629 min  
 Delta R.T.: -0.007 min  
 Response: 14005933448  
 Conc: 717.23 ng/ml



#12 2,4,5-T

R.T.: 10.352 min  
 Delta R.T.: -0.004 min  
 Response: 9233980783  
 Conc: 649.39 ng/ml

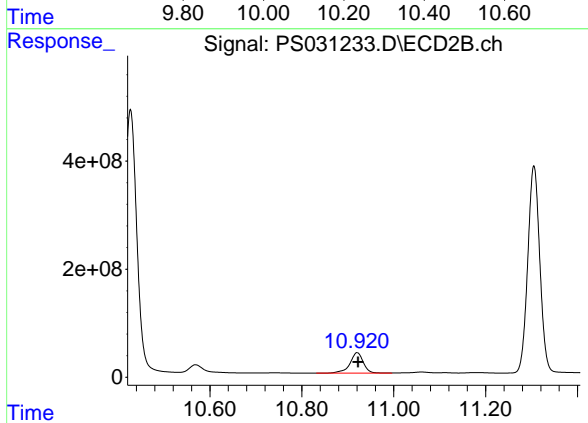




#13 2,4-DB

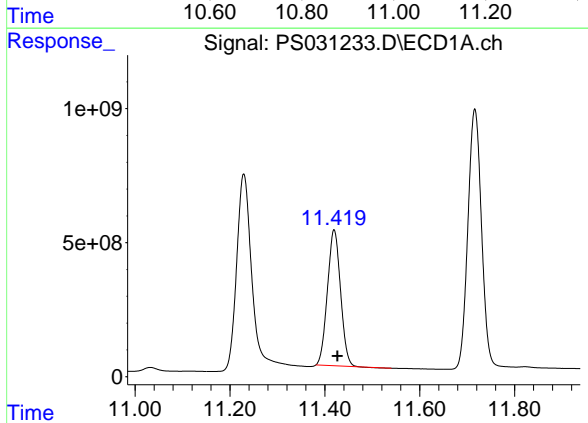
R.T.: 10.207 min  
 Delta R.T.: -0.006 min  
 Response: 2059772066  
 Conc: 688.91 ng/ml

Instrument :  
 ECD\_S  
 ClientSampleId :  
 HSTDCCC750



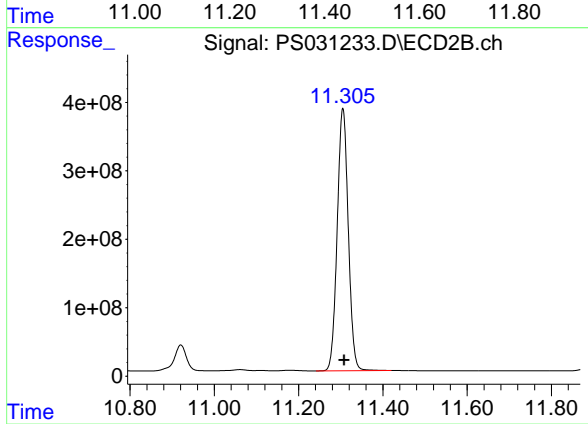
#13 2,4-DB

R.T.: 10.920 min  
 Delta R.T.: -0.002 min  
 Response: 764054036  
 Conc: 652.75 ng/ml



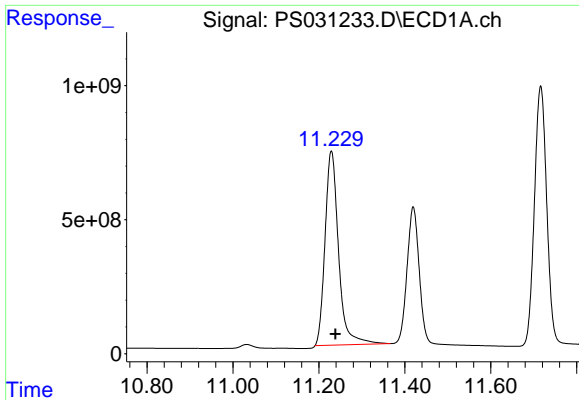
#14 DINOSEB

R.T.: 11.419 min  
 Delta R.T.: -0.007 min  
 Response: 9704009222  
 Conc: 623.27 ng/ml



#14 DINOSEB

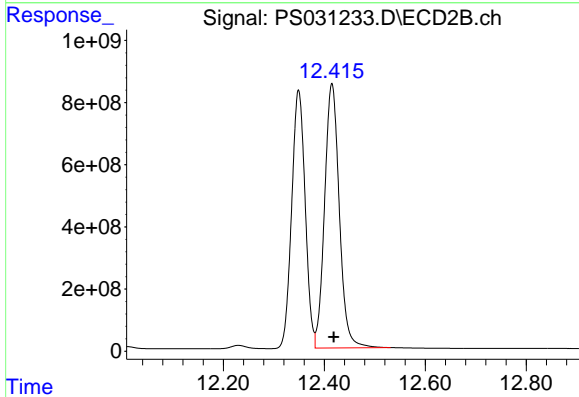
R.T.: 11.305 min  
 Delta R.T.: -0.003 min  
 Response: 6972808210  
 Conc: 616.95 ng/ml



#15 Picloram

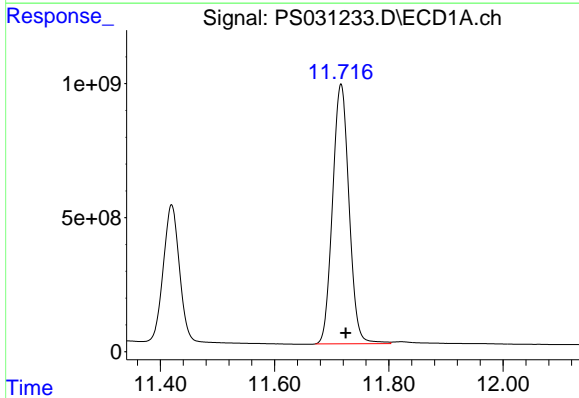
R.T.: 11.229 min  
 Delta R.T.: -0.010 min  
 Response: 15822627588  
 Conc: 790.87 ng/ml

Instrument :  
 ECD\_S  
 ClientSampleId :  
 HSTDCCC750



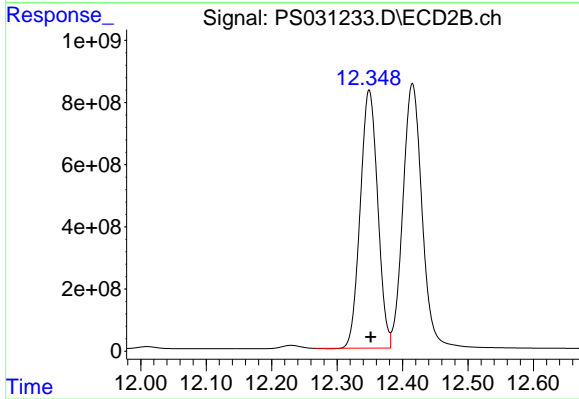
#15 Picloram

R.T.: 12.415 min  
 Delta R.T.: -0.004 min  
 Response: 17205474787  
 Conc: 691.12 ng/ml



#16 DCPA

R.T.: 11.716 min  
 Delta R.T.: -0.008 min  
 Response: 19417209517  
 Conc: 676.71 ng/ml



#16 DCPA

R.T.: 12.349 min  
 Delta R.T.: -0.003 min  
 Response: 15356497385  
 Conc: 666.63 ng/ml