

LB136633

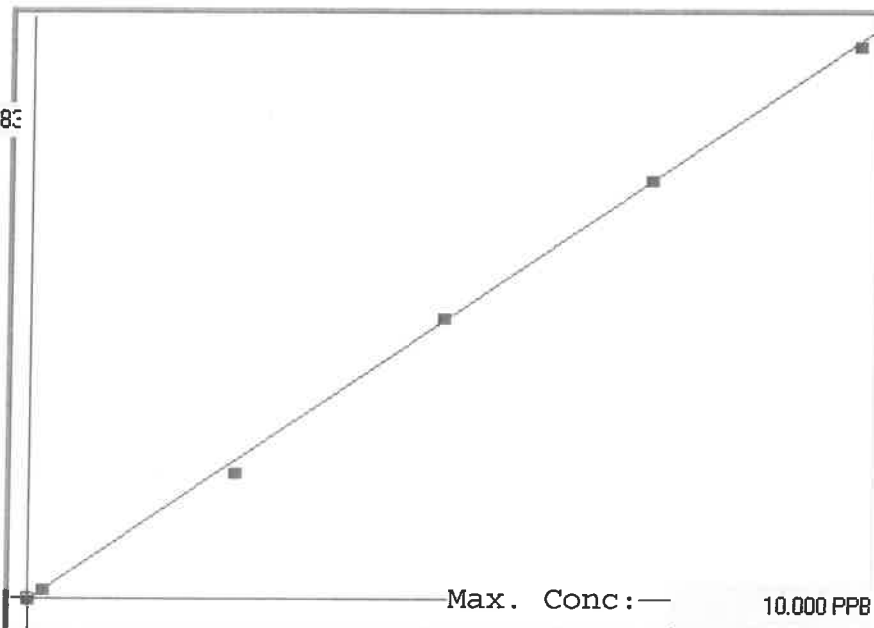
7470A

INSTRUMENT ID: CV1

Linear

μ Abs.:

44383



A= 0.0000e+000

B= 2.2308e-004

C= 3.8452e-002

Rho= 0.9997127

Accept=Accepted

Std ID	Conc.	Calc.	Dev.	Mean	SD or %RSD	Rep 1	Rep 2	Rep 3	Rep 4	Rep 5	
0.0	0.000	0.049	0.049	49	0.000	49	0				1/0
0.2	0.200	0.220	0.020	814	0.0 %	814					10
2.5	2.500	2.333	-0.167	10286	0.0 %	10286					-7
5.0	5.000	5.085	0.085	22624	0.0 %	22624					2
7.5	7.500	7.573	0.073	33773	0.0 %	33773					1
10.0	10.000	9.939	-0.061	44383	0.0 %	44383					-1

LB136633 INSTRUMENT ID : CV1

Method: 7470A

Operator: Admin

Date of Analysis: 28 Jul 2025 11:00:18

Type	Sample ID	Extended ID	Conc	μ Abs.	Units	Type	Std Conc	Method	Date
S	0.0 - 1	50	-	49	PPB	Std	0.0000	7470A	28 Jul 2025 11:25:31
S	0.2 - 1	50.2	-	814	PPB	Std	0.2000	7470A	28 Jul 2025 11:27:49
S	2.5 - 1	50.5	-	10286	PPB	Std	2.5000	7470A	28 Jul 2025 11:30:07
S	5.0 - 1	50.5	-	22624	PPB	Std	5.0000	7470A	28 Jul 2025 11:32:24
S	7.5 - 1	50.5	-	33773	PPB	Std	7.5000	7470A	28 Jul 2025 11:34:41
S	10.0 - 1	50.6	-	44383	PPB	Std	10.0000	7470A	28 Jul 2025 11:40:06
U	ICV40 - 1	ICV40	4.2752	18992	PPB	SMPL	-7470A	-7470A	28 Jul 2025 11:45:56
U	ICB40 - 1	ICB40	-0.0249	-284	PPB	SMPL	-7470A	-7470A	28 Jul 2025 11:48:12
U	CCV51 - 1	CCV51	5.3333	23735	PPB	SMPL	-7470A	-7470A	28 Jul 2025 11:50:29
U	CCB51 - 1	CCB51	-0.0251	-285	PPB	SMPL	-7470A	-7470A	28 Jul 2025 11:52:44
U	CRA - 1	CRA	0.2276	848	PPB	SMPL	-7470A	-7470A	28 Jul 2025 11:57:40
U	HighStd - 1	HighStd	9.8453	43961	PPB	SMPL	-7470A	-7470A	28 Jul 2025 11:59:55
U	ChkStd - 1	ChkStd	7.0709	31524	PPB	SMPL	-7470A	-7470A	28 Jul 2025 12:02:10
U	PB169026BL - 1	PBW	-0.0610	-446	PPB	SMPL	-7470A	-7470A	28 Jul 2025 12:04:29
U	PB169026BS - 1	LCSW	4.7178	20976	PPB	SMPL	-7470A	-7470A	28 Jul 2025 12:09:42
U	Q2681-01 - 1	NYP-POUCH-SPENT-CARBON	-0.0332	-321	PPB	SMPL	-7470A	-7470A	28 Jul 2025 12:11:58
U	Q2685-01 - 1	COMP-1	0.0302	-37	PPB	SMPL	-7470A	-7470A	28 Jul 2025 12:14:17
U	Q2685-02 - 1	COMP-2	0.0344	-18	PPB	SMPL	-7470A	-7470A	28 Jul 2025 12:16:34
U	Q2685-03 - 1	COMP-3	0.0451	30	PPB	SMPL	-7470A	-7470A	28 Jul 2025 12:18:51
U	Q2685-04 - 1	COMP-4	0.0550	74	PPB	SMPL	-7470A	-7470A	28 Jul 2025 12:21:07
U	CCV52 - 1	CCV52	5.1562	22941	PPB	SMPL	-7470A	-7470A	28 Jul 2025 12:23:22
U	CCB52 - 1	CCB52	-0.0222	-272	PPB	SMPL	-7470A	-7470A	28 Jul 2025 12:25:38
U	Q2688-01 - 1	COMP-1	0.0333	-23	PPB	SMPL	-7470A	-7470A	28 Jul 2025 12:27:55
U	Q2688-02 - 1	COMP-2	0.0391	3	PPB	SMPL	-7470A	-7470A	28 Jul 2025 12:30:10
U	Q2688-03 - 1	COMP-3	0.0340	-20	PPB	SMPL	-7470A	-7470A	28 Jul 2025 12:32:25
U	Q2688-04 - 1	COMP-4	0.0494	49	PPB	SMPL	-7470A	-7470A	28 Jul 2025 12:34:41
U	Q2688-05 - 1	COMP-5	0.0443	26	PPB	SMPL	-7470A	-7470A	28 Jul 2025 12:36:57
U	Q2688-06 - 1	COMP-6	0.0385	0	PPB	SMPL	-7470A	-7470A	28 Jul 2025 12:39:14
U	Q2688-07 - 1	COMP-7	0.0414	13	PPB	SMPL	-7470A	-7470A	28 Jul 2025 12:41:30
U	Q2688-08 - 1	COMP-8	0.0456	32	PPB	SMPL	-7470A	-7470A	28 Jul 2025 12:43:47
U	Q2688-10 - 1	SOM-103	0.0483	44	PPB	SMPL	-7470A	-7470A	28 Jul 2025 12:46:05
U	Q2688-11 - 1	SOM-77	0.0570	83	PPB	SMPL	-7470A	-7470A	28 Jul 2025 12:48:21
U	CCV53 - 1	CCV53	4.9775	22140	PPB	SMPL	-7470A	-7470A	28 Jul 2025 12:50:36
U	CCB53 - 1	CCB53	-0.0209	-266	PPB	SMPL	-7470A	-7470A	28 Jul 2025 12:52:52
U	Q2688-12 - 1	SOM-78	0.0340	-20	PPB	SMPL	-7470A	-7470A	28 Jul 2025 12:55:09
U	Q2688-13 - 1	TOTE-COMP	0.0324	-27	PPB	SMPL	-7470A	-7470A	28 Jul 2025 12:57:25
U	Q2691-02 - 1	295	0.0407	10	PPB	SMPL	-7470A	-7470A	28 Jul 2025 12:59:40
U	Q2691-08 - 1	299	0.0376	-4	PPB	SMPL	-7470A	-7470A	28 Jul 2025 13:01:56
U	Q2691-08DUP - 1	299DUP	0.0414	13	PPB	SMPL	-7470A	-7470A	28 Jul 2025 13:04:12
U	Q2691-08MS - 1	299MS	4.4481	19767	PPB	SMPL	-7470A	-7470A	28 Jul 2025 13:06:28
U	Q2691-08MSD - 1	299MSD	4.6877	20841	PPB	SMPL	-7470A	-7470A	28 Jul 2025 13:08:45
U	CCV54 - 1	CCV54	4.9175	21871	PPB	SMPL	-7470A	-7470A	28 Jul 2025 13:11:04
U	CCB54 - 1	CCB54	-0.0218	-270	PPB	SMPL	-7470A	-7470A	28 Jul 2025 13:13:23
U	PB168986TB - 1		0.0286	-44	PPB	SMPL	-7470A	-7470A	28 Jul 2025 13:15:40
U	PB168995TB - 1		0.0360	-11	PPB	SMPL	-7470A	-7470A	28 Jul 2025 13:17:56
U	Q2691-08LX5 - 1		0.0438	24	PPB	SMPL	-7470A	-7470A	28 Jul 2025 13:20:12
U	Q2691-08A - 1		4.2469	18865	PPB	SMPL	-7470A	-7470A	28 Jul 2025 13:22:28
U	CCV55 - 1	CCV55	4.7713	21216	PPB	SMPL	-7470A	-7470A	28 Jul 2025 13:24:43
U	CCB55 - 1	CCB55	-0.0296	-305	PPB	SMPL	-7470A	-7470A	28 Jul 2025 13:27:01