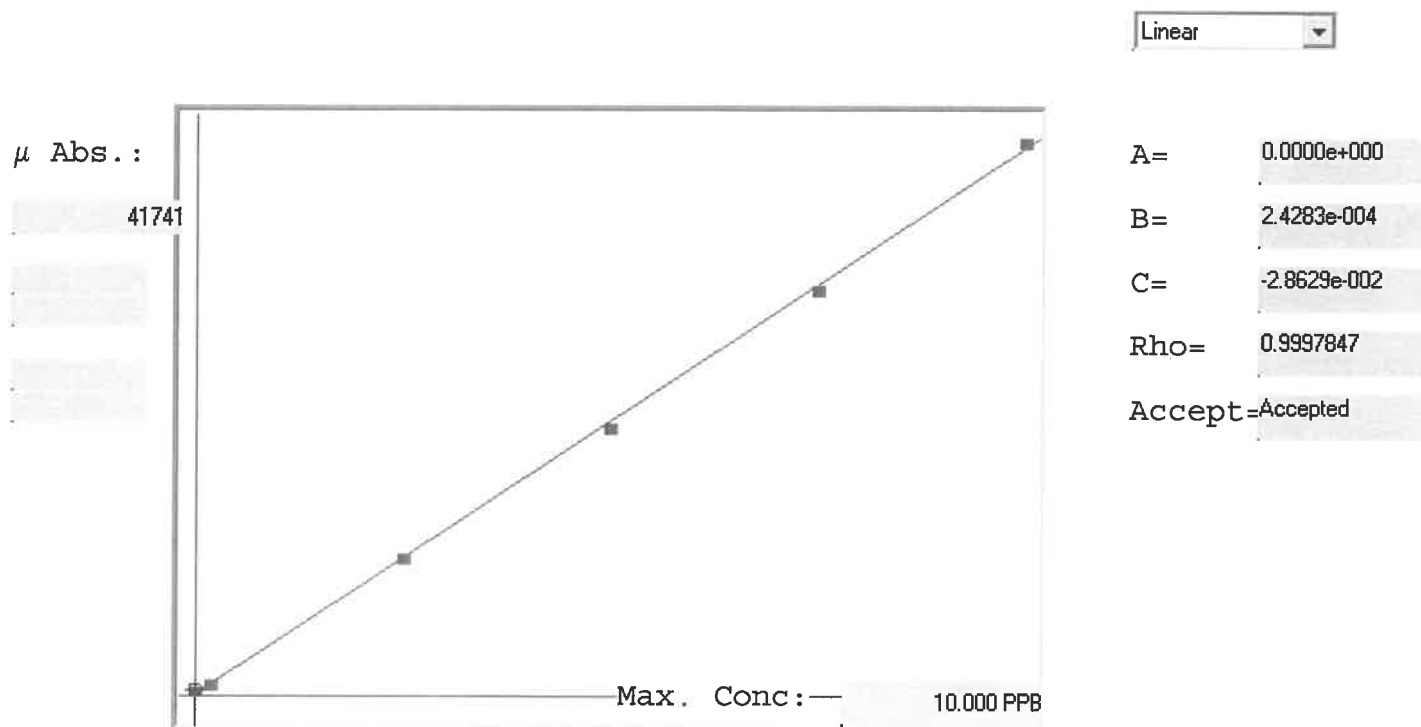


LB136725  
INSTRUMENT ID:CV1

7470A



Std ID	Conc.	Calc.	Dev.	Mean	SD or %RSD	Rep 1	Rep 2	Rep 3	Rep 4	Rep 5	% D
0.0	0.000	0.089	0.089	485	0.000	485	0				-9
0.2	0.200	0.182	-0.018	867	0.0 %	867					0
2.5	2.500	2.497	-0.003	10400	0.0 %	10400	0				-2
5.0	5.000	4.913	-0.087	20351	0.0 %	20351					-1
7.5	7.500	7.411	-0.089	30639	0.0 %	30639					1
10.0	10.000	10.107	0.107	41741	0.0 %	41741					

# LB136725 INSTRUMENT ID:CV1

Method: 7470A Operator: Admin Date of Analysis: 06 Aug 2025 10:39:39

Type	Sample ID	Extended ID	Conc.	μ Abs.	Units	Type	Std Conc	Method	Date
S	0.0 - 1	SO	-	485	PPB	Std	0.0000	7470A	06 Aug 2025 13:52:45
S	0.2 - 1	SO.2	-	867	PPB	Std	0.2000	7470A	06 Aug 2025 13:55:02
S	2.5 - 1	S2.5	-	10400	PPB	Std	2.5000	7470A	06 Aug 2025 13:57:19
S	5.0 - 1	S5.0	-	20351	PPB	Std	5.0000	7470A	06 Aug 2025 13:59:36
S	7.5 - 1	S7.5	-	30639	PPB	Std	7.5000	7470A	06 Aug 2025 14:01:52
S	10.0 - 1	S10.0	-	41741	PPB	Std	10.0000	7470A	06 Aug 2025 14:04:10
U	ICV55 - 1	ICV55	4.0905	16963	PPB	SMPL	-7470A	-7470A	06 Aug 2025 14:07:05
U	ICB55 - 1	ICB55	0.0093	156	PPB	SMPL	-7470A	-7470A	06 Aug 2025 14:10:15
U	CCV92 - 1	CCV92	4.6439	19242	PPB	SMPL	-7470A	-7470A	06 Aug 2025 14:12:30
U	CCB92 - 1	CCB92	-0.0114	71	PPB	SMPL	-7470A	-7470A	06 Aug 2025 14:14:45
U	CRA - 1	CRA	0.1610	781	PPB	SMPL	-7470A	-7470A	06 Aug 2025 14:22:17
U	HighStd - 1	HighStd	9.4447	39012	PPB	SMPL	-7470A	-7470A	06 Aug 2025 14:24:32
U	ChkStd - 1	ChkStd	6.8879	28483	PPB	SMPL	-7470A	-7470A	06 Aug 2025 14:26:48
U	PB169148BL - 1	PBW	-0.0498	-87	PPB	SMPL	-7470A	-7470A	06 Aug 2025 14:31:42
U	PB169148BS - 1	LCSW	4.0318	16721	PPB	SMPL	-7470A	-7470A	06 Aug 2025 14:33:57
U	Q2719-02 - 1	50765	-0.0549	-108	PPB	SMPL	-7470A	-7470A	06 Aug 2025 14:36:13
U	Q2733-01 - 1	TW-WTS-12	-0.0289	-1	PPB	SMPL	-7470A	-7470A	06 Aug 2025 14:38:32
U	Q2736-02 - 1	4023	-0.0245	17	PPB	SMPL	-7470A	-7470A	06 Aug 2025 14:40:49
U	Q2736-03 - 1	4043	0.0653	387	PPB	SMPL	-7470A	-7470A	06 Aug 2025 14:43:06
U	Q2736-04 - 1	4044	-0.0172	47	PPB	SMPL	-7470A	-7470A	06 Aug 2025 14:45:21
U	CCV93 - 1	CCV93	5.3008	21947	PPB	SMPL	-7470A	-7470A	06 Aug 2025 15:04:08
U	CCB93 - 1	CCB93	-0.0063	92	PPB	SMPL	-7470A	-7470A	06 Aug 2025 15:06:22
U	Q2739-01 - 1	50743	0.3317	1484	PPB	SMPL	-7470A	-7470A	06 Aug 2025 15:08:40
U	Q2756-01 - 1	71725	-0.0740	-187	PPB	SMPL	-7470A	-7470A	06 Aug 2025 15:10:55
U	Q2756-01DUP - 1	71725DUP	-0.0167	49	PPB	SMPL	-7470A	-7470A	06 Aug 2025 15:13:14
U	Q2756-01MS - 1	71725MS	3.4247	14221	PPB	SMPL	-7470A	-7470A	06 Aug 2025 15:15:29
U	Q2756-01MSD - 1	71725MSD	3.2120	13345	PPB	SMPL	-7470A	-7470A	06 Aug 2025 15:17:45
U	Q2756-01LX5 - 1		-0.1175	-366	PPB	SMPL	-7470A	-7470A	06 Aug 2025 15:20:03
U	Q2756-01A - 1		3.8263	15875	PPB	SMPL	-7470A	-7470A	06 Aug 2025 15:22:21
U	CCV94 - 1	CCV94	5.1014	21126	PPB	SMPL	-7470A	-7470A	06 Aug 2025 15:24:38
U	CCB94 - 1	CCB94	-0.0058	94	PPB	SMPL	-7470A	-7470A	06 Aug 2025 15:26:56