

Data Path : Z:\svoasrv\HPCHEM1\BNA\_P\Data\BP081525\  
 Data File : BP025444.D  
 Acq On : 16 Aug 2025 04:00  
 Operator : CG/JU  
 Sample : Q2836-11  
 Misc :  
 ALS Vial : 23 Sample Multiplier: 1

Instrument :  
 BNA\_P  
 ClientSampleId :  
 WC-A2-17-C

Quant Time: Aug 18 01:40:30 2025  
 Quant Method : Z:\svoasrv\HPCHEM1\BNA\_P\Methods\8270E-BP081425.M  
 Quant Title : ASP BNA STANDARDS FOR 5 POINT CALIBRATION  
 QLast Update : Thu Aug 14 18:14:31 2025  
 Response via : Initial Calibration

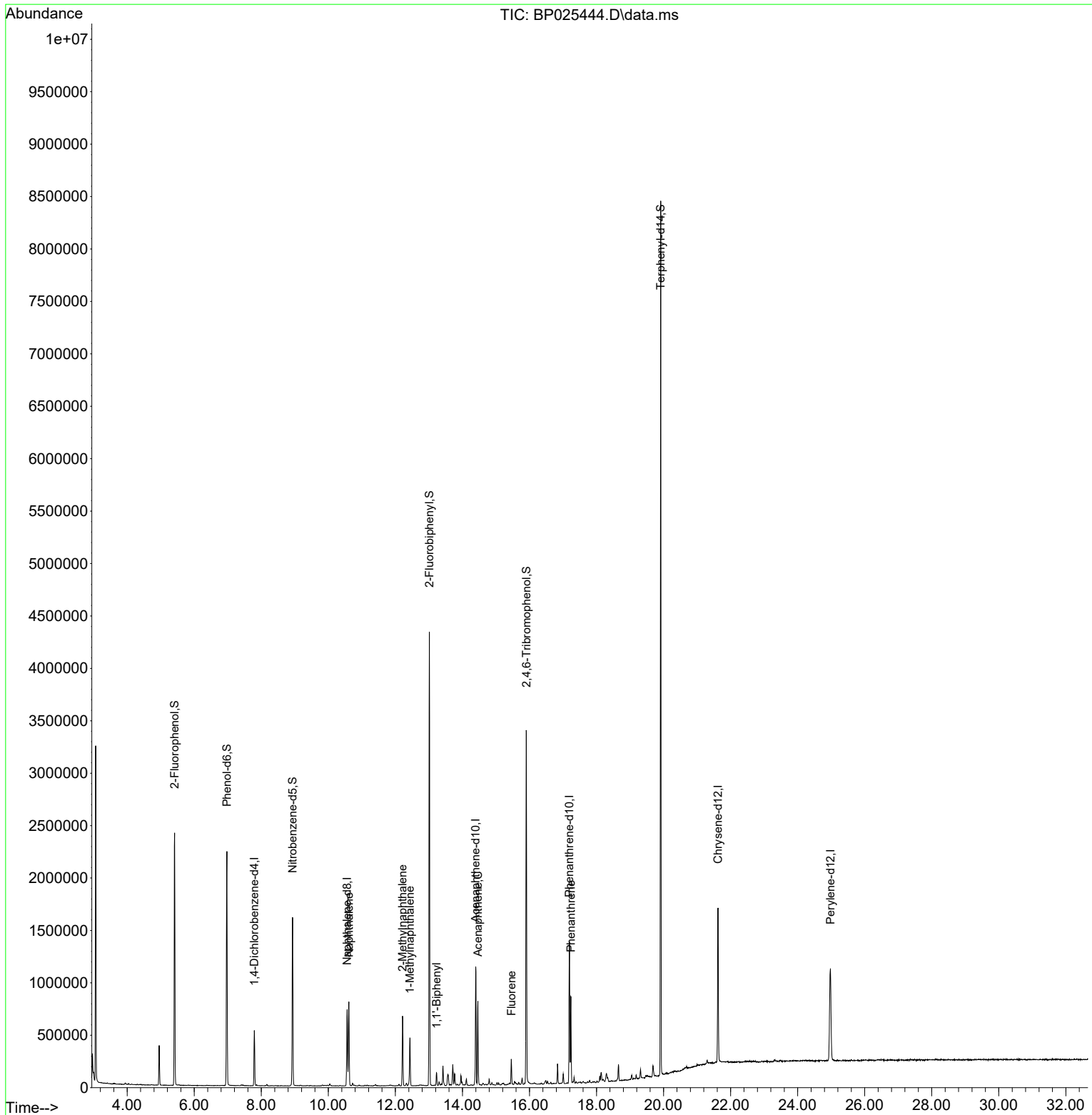
Compound	R.T.	QIon	Response	Conc	Units	Dev(Min)
Internal Standards						
1) 1,4-Dichlorobenzene-d4	7.790	152	147250	20.000	ng	0.00
21) Naphthalene-d8	10.560	136	600452	20.000	ng	0.00
39) Acenaphthene-d10	14.395	164	395006	20.000	ng	-0.01
64) Phenanthrene-d10	17.189	188	827338	20.000	ng	-0.01
76) Chrysene-d12	21.624	240	881184	20.000	ng	-0.02
86) Perylene-d12	24.977	264	984410	20.000	ng	-0.05
System Monitoring Compounds						
5) 2-Fluorophenol	5.414	112	1036734	116.924	ng	0.00
7) Phenol-d6	6.972	99	1257270	110.598	ng	0.00
23) Nitrobenzene-d5	8.931	82	916025	77.171	ng	0.00
42) 2,4,6-Tribromophenol	15.907	330	664149	124.915	ng	0.00
45) 2-Fluorobiphenyl	13.013	172	2060831	71.303	ng	0.00
79) Terphenyl-d14	19.913	244	3564458	74.008	ng	0.00
Target Compounds						
31) Naphthalene	10.613	128	665612	21.328	ng	99
37) 2-Methylnaphthalene	12.213	142	311560	15.340	ng	98
38) 1-Methylnaphthalene	12.437	142	215746	9.989	ng	98
46) 1,1'-Biphenyl	13.231	154	64403	2.245	ng	98
52) Acenaphthene	14.460	154	268677	12.386	ng	100
58) Fluorene	15.460	166	105209	3.888	ng	95
71) Phenanthrene	17.236	178	525200	11.556	ng	100

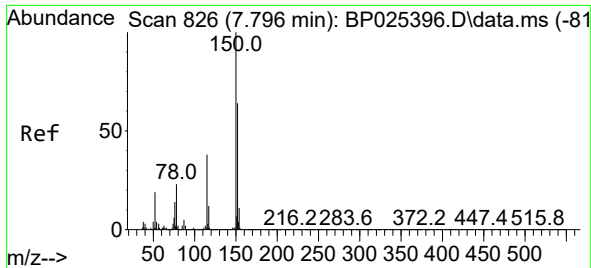
(#) = qualifier out of range (m) = manual integration (+) = signals summed

Data Path : Z:\svoasrv\HPCHEM1\BNA\_P\Data\BP081525\  
 Data File : BP025444.D  
 Acq On : 16 Aug 2025 04:00  
 Operator : CG/JU  
 Sample : Q2836-11  
 Misc :  
 ALS Vial : 23 Sample Multiplier: 1

Instrument :  
 BNA\_P  
 ClientSampleId :  
 WC-A2-17-C

Quant Time: Aug 18 01:40:30 2025  
 Quant Method : Z:\svoasrv\HPCHEM1\BNA\_P\Methods\8270E-BP081425.M  
 Quant Title : ASP BNA STANDARDS FOR 5 POINT CALIBRATION  
 QLast Update : Thu Aug 14 18:14:31 2025  
 Response via : Initial Calibration

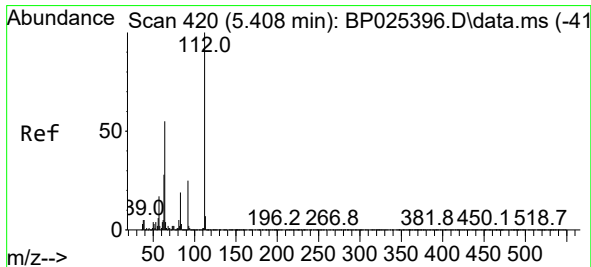
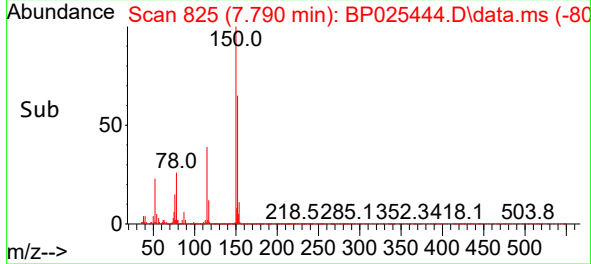
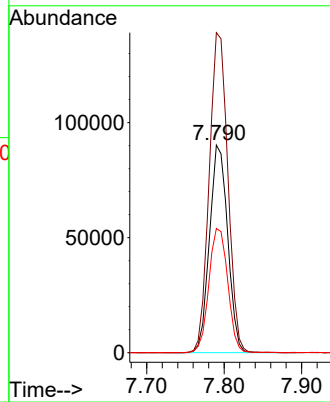
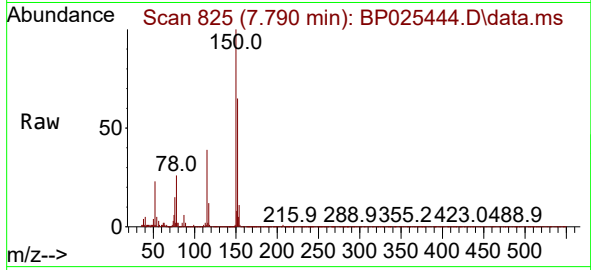




#1  
 1,4-Dichlorobenzene-d4  
 Concen: 20.000 ng  
 RT: 7.790 min Scan# 81  
 Delta R.T. -0.006 min  
 Lab File: BP025444.D  
 Acq: 16 Aug 2025 04:00

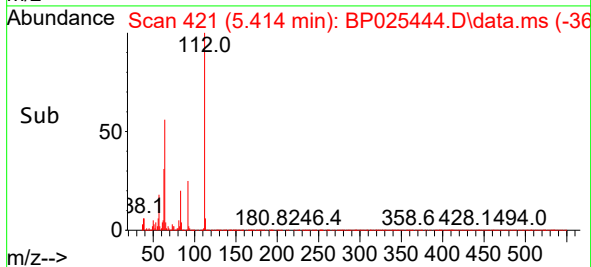
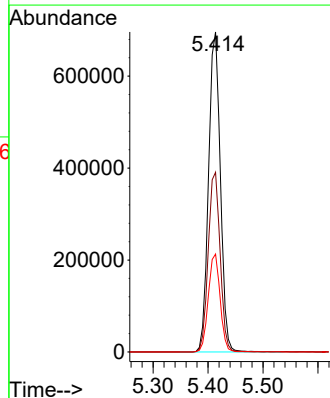
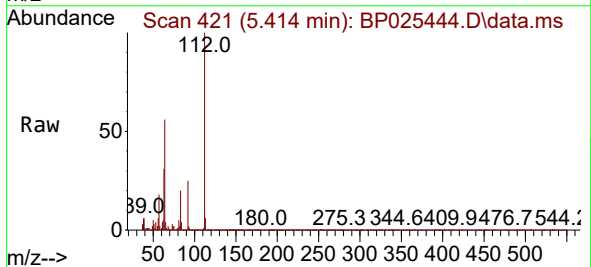
Instrument :  
 BNA\_P  
 ClientSampleId :  
 WC-A2-17-C

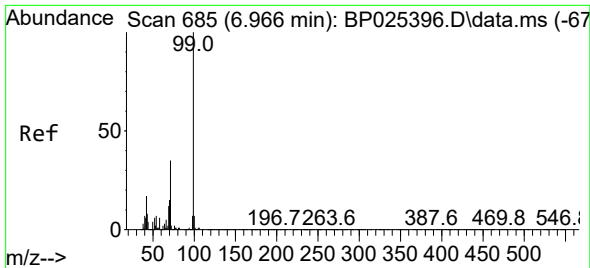
Tgt Ion:152 Resp: 147250  
 Ion Ratio Lower Upper  
 152 100  
 150 154.1 125.9 188.9  
 115 59.8 48.5 72.7



#5  
 2-Fluorophenol  
 Concen: 116.924 ng  
 RT: 5.414 min Scan# 421  
 Delta R.T. 0.006 min  
 Lab File: BP025444.D  
 Acq: 16 Aug 2025 04:00

Tgt Ion:112 Resp: 1036734  
 Ion Ratio Lower Upper  
 112 100  
 64 56.1 43.8 65.8  
 63 30.6 22.7 34.1

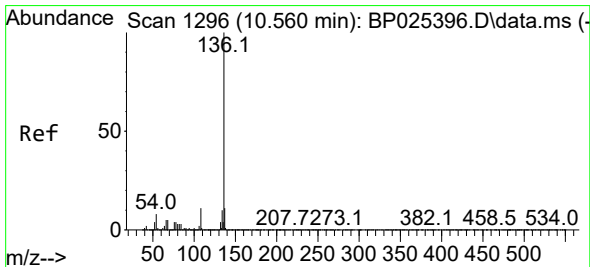
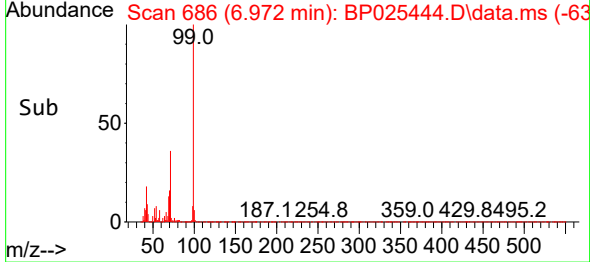
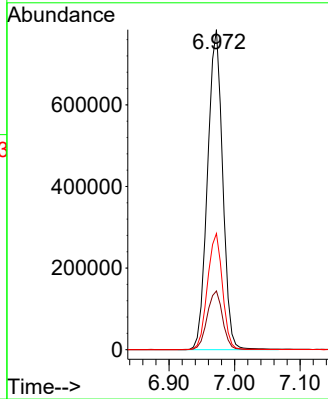
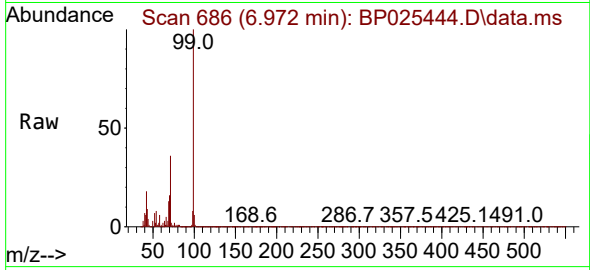




#7  
 Phenol-d6  
 Concen: 110.598 ng  
 RT: 6.972 min Scan# 685  
 Delta R.T. 0.006 min  
 Lab File: BP025444.D  
 Acq: 16 Aug 2025 04:00

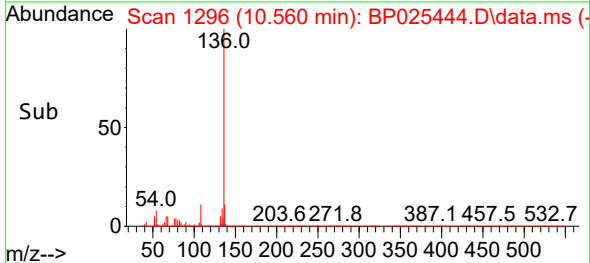
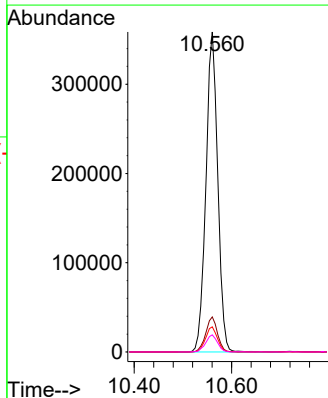
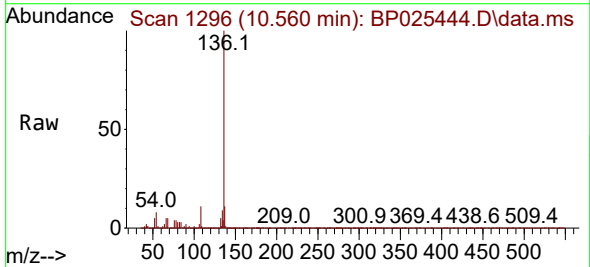
Instrument :  
 BNA\_P  
 ClientSampleId :  
 WC-A2-17-C

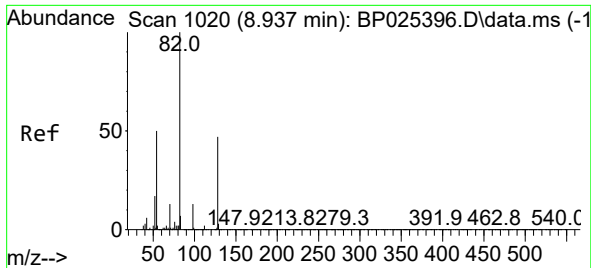
Tgt Ion: 99 Resp: 1257270  
 Ion Ratio Lower Upper  
 99 100  
 42 18.4 13.7 20.5  
 71 36.3 28.2 42.4



#21  
 Naphthalene-d8  
 Concen: 20.000 ng  
 RT: 10.560 min Scan# 1296  
 Delta R.T. 0.000 min  
 Lab File: BP025444.D  
 Acq: 16 Aug 2025 04:00

Tgt Ion:136 Resp: 600452  
 Ion Ratio Lower Upper  
 136 100  
 137 10.9 9.2 13.8  
 54 7.9 6.0 9.0  
 68 5.4 4.3 6.5

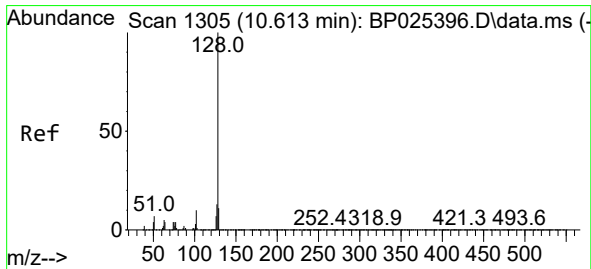
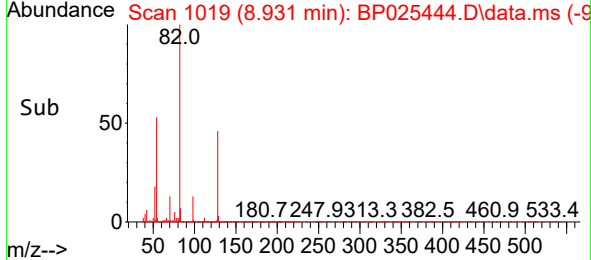
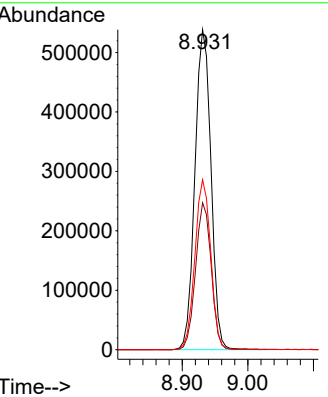
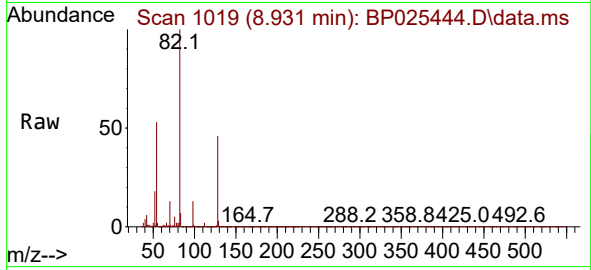




#23  
 Nitrobenzene-d5  
 Concen: 77.171 ng  
 RT: 8.931 min Scan# 1019  
 Delta R.T. -0.006 min  
 Lab File: BP025444.D  
 Acq: 16 Aug 2025 04:00

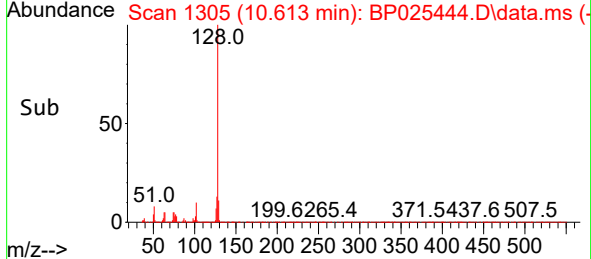
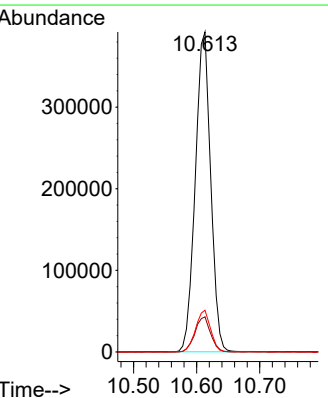
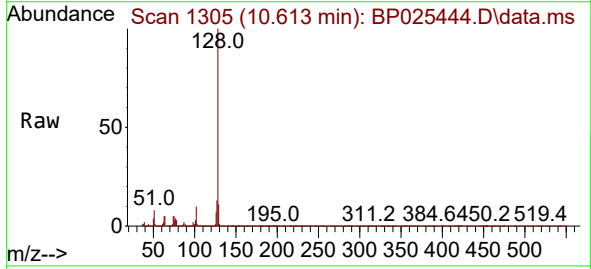
Instrument :  
 BNA\_P  
 ClientSampleId :  
 WC-A2-17-C

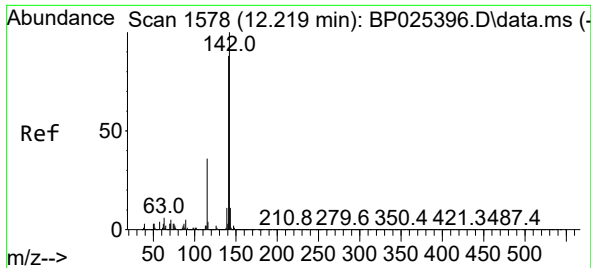
Tgt Ion	Resp	Lower	Upper
82	916025		
128	45.9	37.7	56.5
54	53.1	39.8	59.6



#31  
 Naphthalene  
 Concen: 21.328 ng  
 RT: 10.613 min Scan# 1305  
 Delta R.T. 0.000 min  
 Lab File: BP025444.D  
 Acq: 16 Aug 2025 04:00

Tgt Ion	Resp	Lower	Upper
128	665612		
129	11.0	8.6	13.0
127	13.0	10.7	16.1

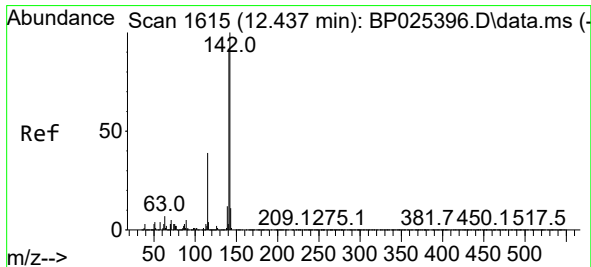
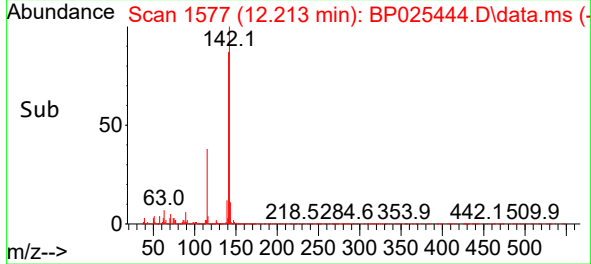
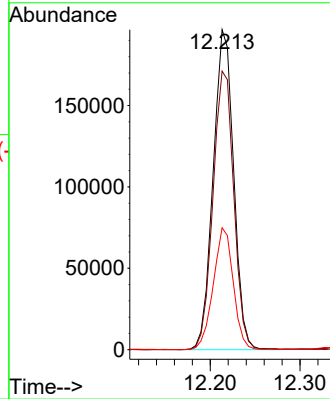
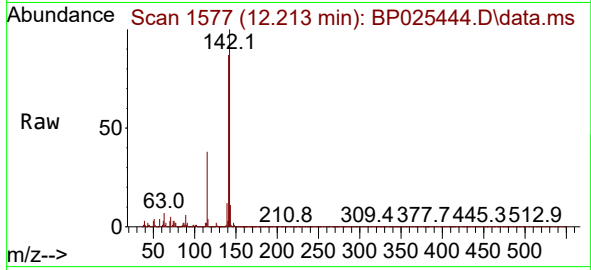




#37  
 2-Methylnaphthalene  
 Concen: 15.340 ng  
 RT: 12.213 min Scan# 11  
 Delta R.T. -0.006 min  
 Lab File: BP025444.D  
 Acq: 16 Aug 2025 04:00

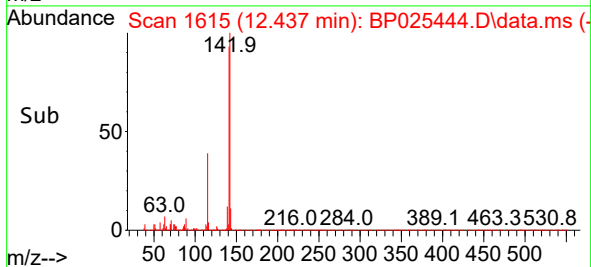
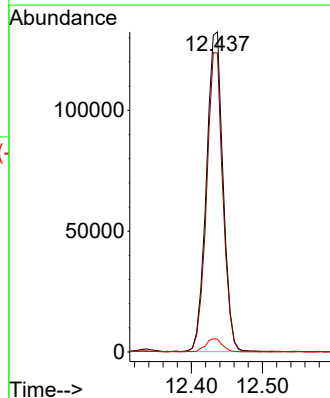
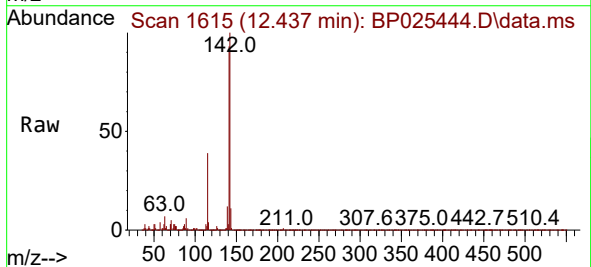
Instrument :  
 BNA\_P  
 ClientSampleId :  
 WC-A2-17-C

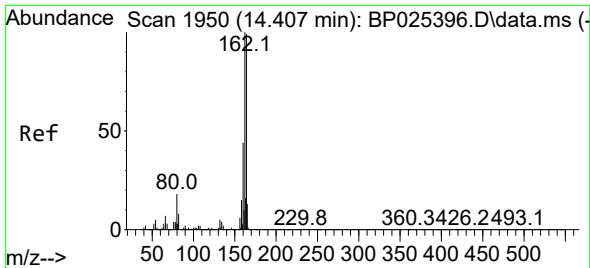
Tgt Ion:142 Resp: 311560  
 Ion Ratio Lower Upper  
 142 100  
 141 87.0 70.3 105.5  
 115 38.1 28.9 43.3



#38  
 1-Methylnaphthalene  
 Concen: 9.989 ng  
 RT: 12.437 min Scan# 1615  
 Delta R.T. 0.000 min  
 Lab File: BP025444.D  
 Acq: 16 Aug 2025 04:00

Tgt Ion:142 Resp: 215746  
 Ion Ratio Lower Upper  
 142 100  
 141 93.4 73.1 109.7  
 116 4.0 3.2 4.8



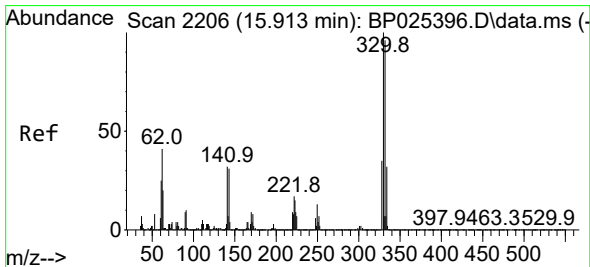
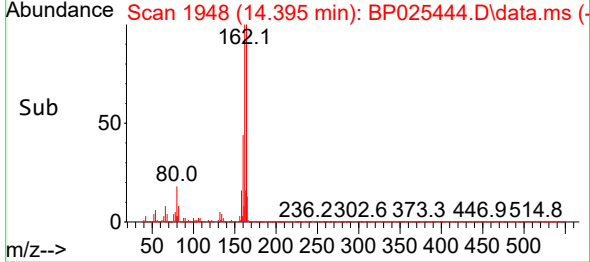
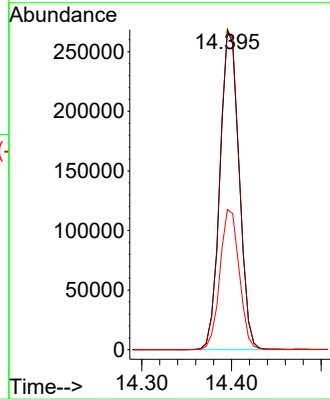
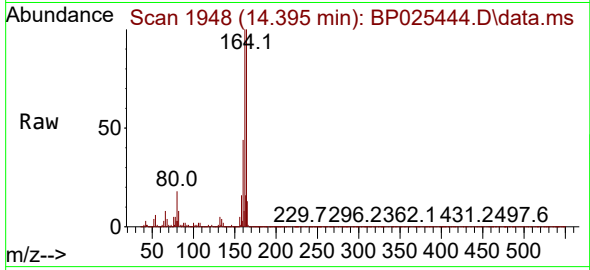


#39  
Acenaphthene-d10  
Concen: 20.000 ng  
RT: 14.395 min Scan# 1948  
Delta R.T. -0.012 min  
Lab File: BP025444.D  
Acq: 16 Aug 2025 04:00

Instrument :  
BNA\_P  
ClientSampleId :  
WC-A2-17-C

Tgt Ion:164 Resp: 395006

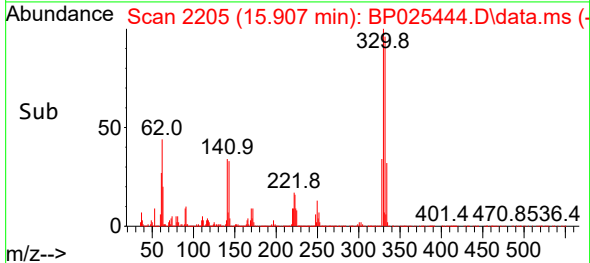
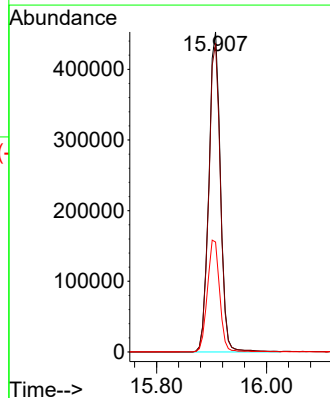
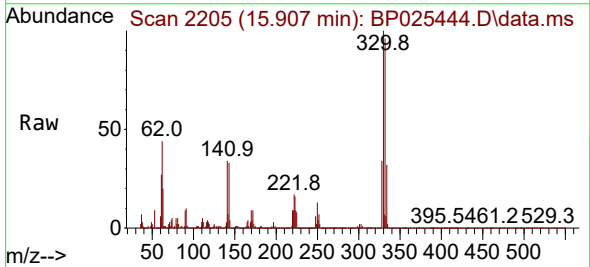
Ion	Ratio	Lower	Upper
164	100		
162	99.9	81.0	121.6
160	43.8	35.4	53.2

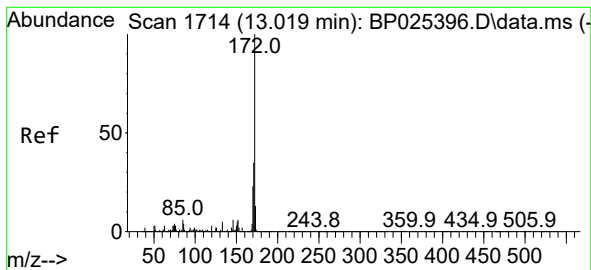


#42  
2,4,6-Tribromophenol  
Concen: 124.915 ng  
RT: 15.907 min Scan# 2205  
Delta R.T. -0.006 min  
Lab File: BP025444.D  
Acq: 16 Aug 2025 04:00

Tgt Ion:330 Resp: 664149

Ion	Ratio	Lower	Upper
330	100		
332	96.8	77.3	115.9
141	36.6	26.6	39.8



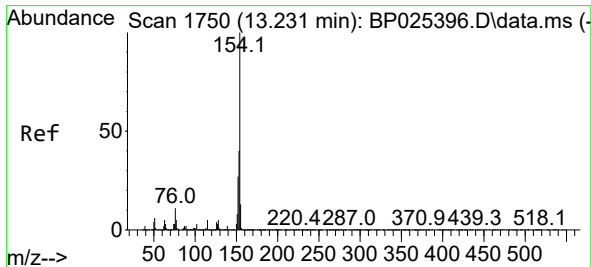
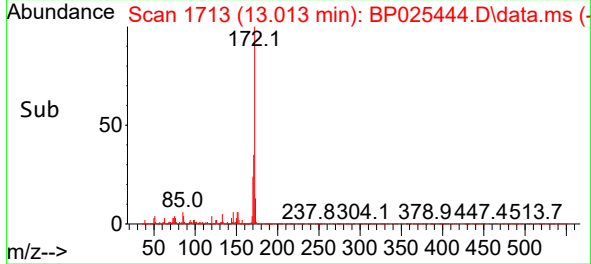
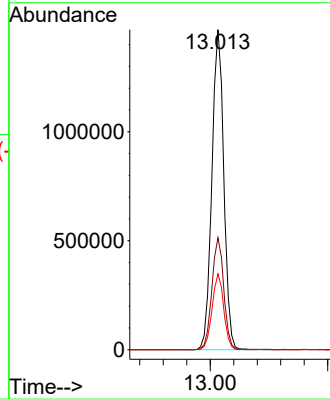
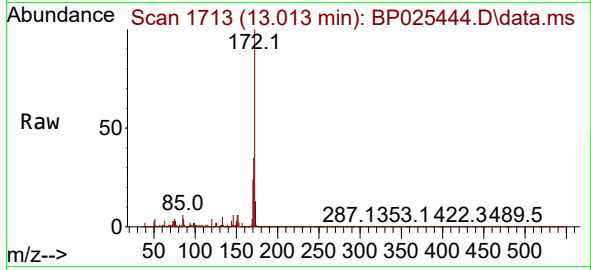


#45  
 2-Fluorobiphenyl  
 Concen: 71.303 ng  
 RT: 13.013 min Scan# 1713  
 Delta R.T. -0.006 min  
 Lab File: BP025444.D  
 Acq: 16 Aug 2025 04:00

Instrument :  
 BNA\_P  
 ClientSampleId :  
 WC-A2-17-C

Tgt Ion:172 Resp: 2060831

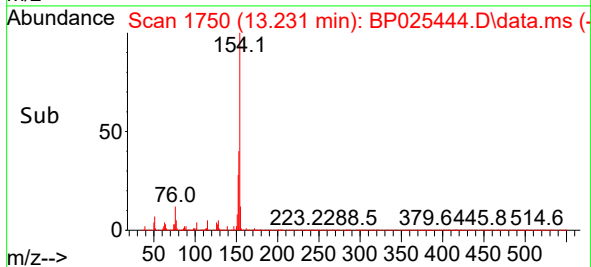
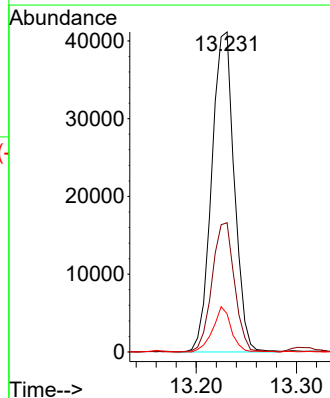
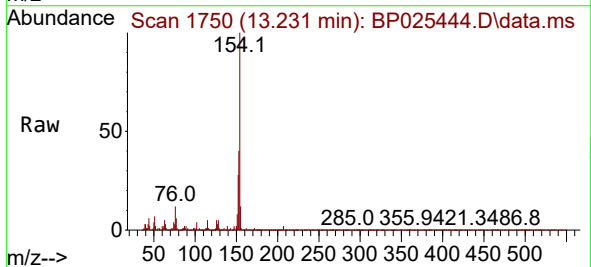
Ion	Ratio	Lower	Upper
172	100		
171	35.0	28.1	42.1
170	23.7	18.6	28.0



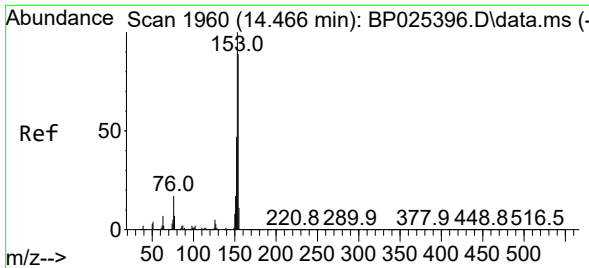
#46  
 1,1'-Biphenyl  
 Concen: 2.245 ng  
 RT: 13.231 min Scan# 1750  
 Delta R.T. 0.000 min  
 Lab File: BP025444.D  
 Acq: 16 Aug 2025 04:00

Tgt Ion:154 Resp: 64403

Ion	Ratio	Lower	Upper
154	100		
153	40.4	19.5	59.5
76	11.9	0.0	31.1





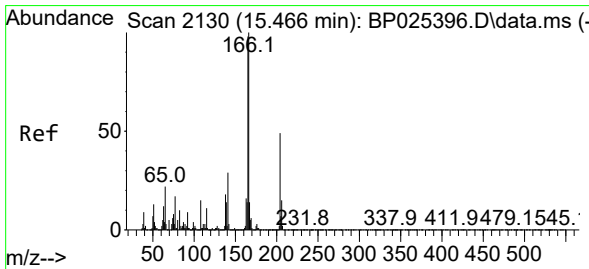
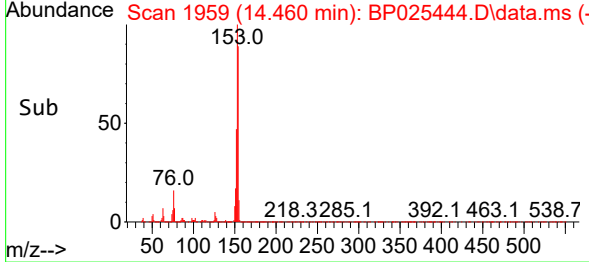
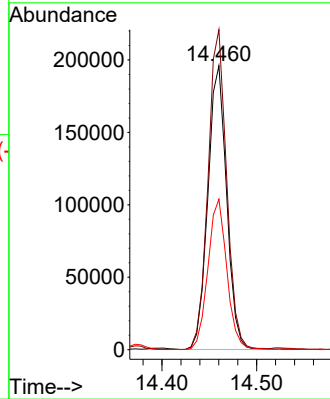
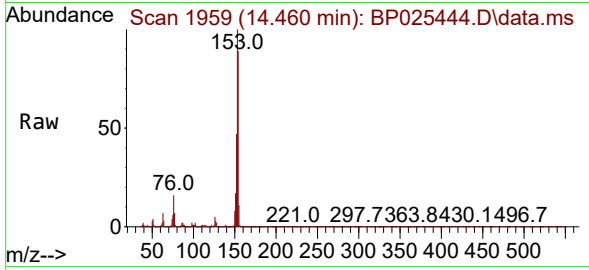


#52  
 Acenaphthene  
 Concen: 12.386 ng  
 RT: 14.460 min Scan# 1960  
 Delta R.T. -0.006 min  
 Lab File: BP025444.D  
 Acq: 16 Aug 2025 04:00

Instrument :  
 BNA\_P  
 ClientSampleId :  
 WC-A2-17-C

Tgt Ion:154 Resp: 268677

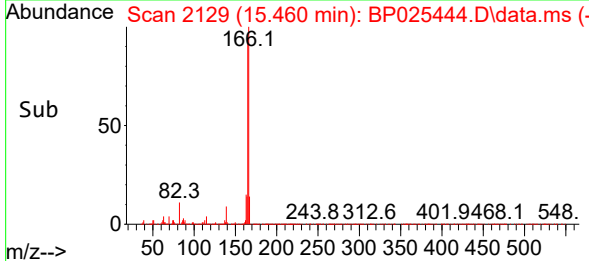
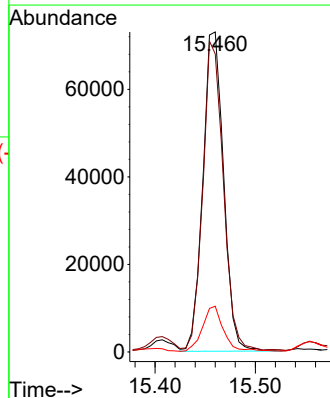
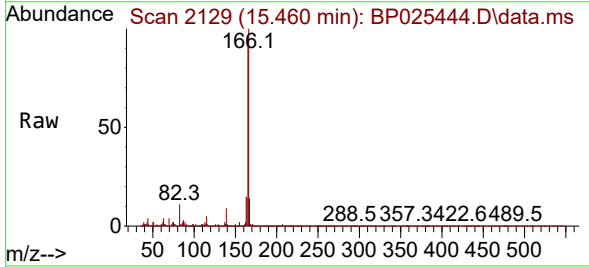
Ion	Ratio	Lower	Upper
154	100		
153	112.7	90.2	135.2
152	53.0	42.1	63.1

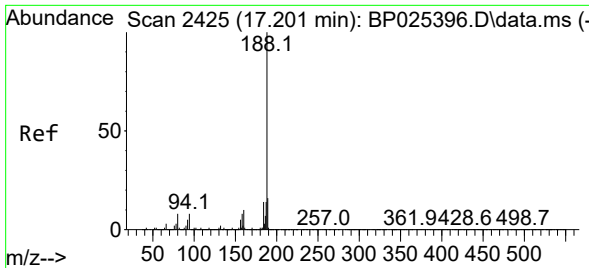


#58  
 Fluorene  
 Concen: 3.888 ng  
 RT: 15.460 min Scan# 2129  
 Delta R.T. -0.006 min  
 Lab File: BP025444.D  
 Acq: 16 Aug 2025 04:00

Tgt Ion:166 Resp: 105209

Ion	Ratio	Lower	Upper
166	100		
165	93.2	78.8	118.2
167	14.3	11.0	16.4



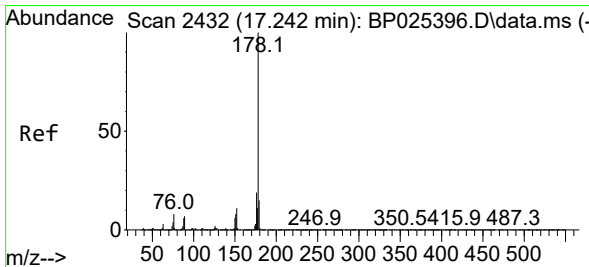
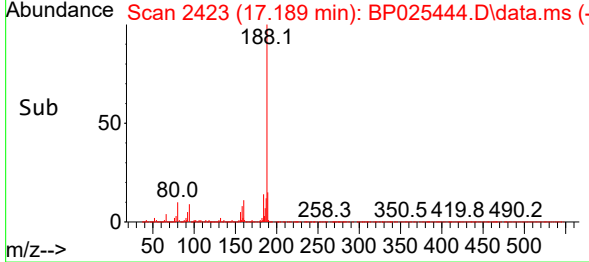
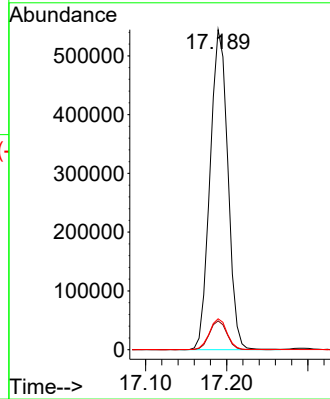
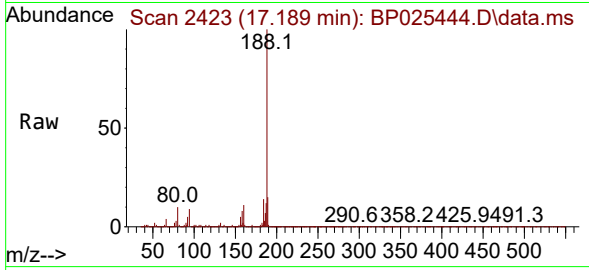


#64  
 Phenanthrene-d10  
 Concen: 20.000 ng  
 RT: 17.189 min Scan# 2425  
 Delta R.T. -0.012 min  
 Lab File: BP025444.D  
 Acq: 16 Aug 2025 04:00

Instrument : BNA\_P  
 ClientSampleId : WC-A2-17-C

Tgt Ion:188 Resp: 827338

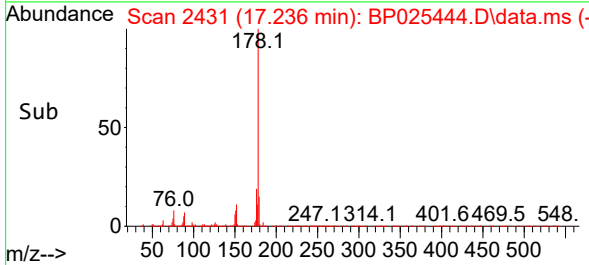
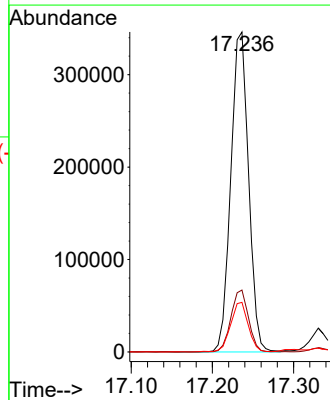
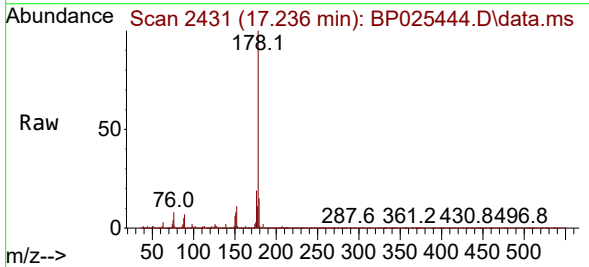
Ion	Ratio	Lower	Upper
188	100		
94	9.0	6.6	10.0
80	9.7	6.7	10.1

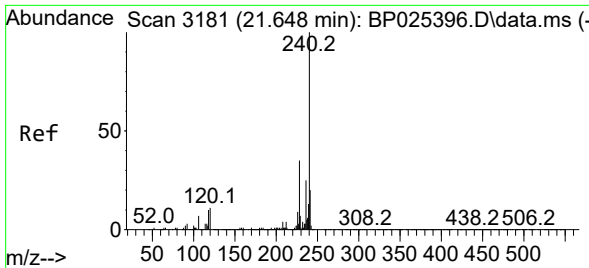


#71  
 Phenanthrene  
 Concen: 11.556 ng  
 RT: 17.236 min Scan# 2431  
 Delta R.T. -0.006 min  
 Lab File: BP025444.D  
 Acq: 16 Aug 2025 04:00

Tgt Ion:178 Resp: 525200

Ion	Ratio	Lower	Upper
178	100		
176	19.3	15.5	23.3
179	15.5	12.2	18.4



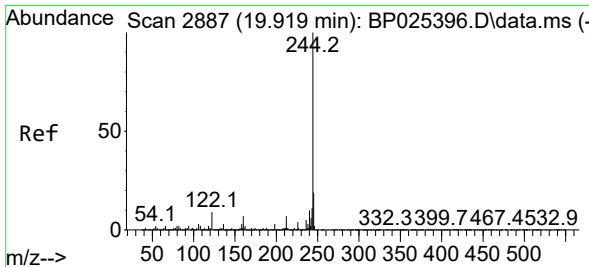
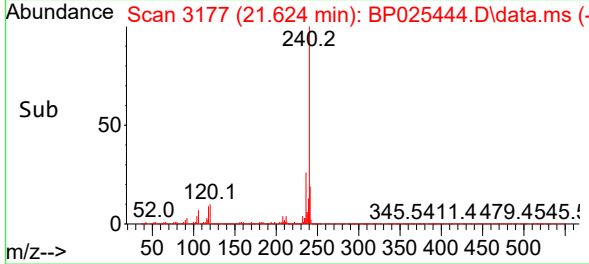
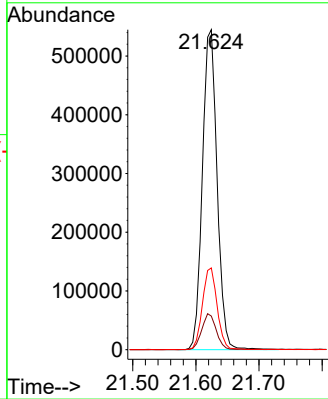
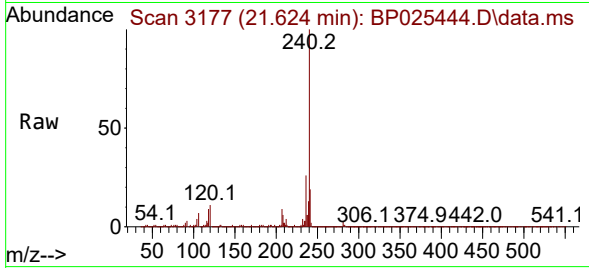


#76  
 Chrysene-d12  
 Concen: 20.000 ng  
 RT: 21.624 min Scan# 3181  
 Delta R.T. -0.023 min  
 Lab File: BP025444.D  
 Acq: 16 Aug 2025 04:00

Instrument :  
 BNA\_P  
 ClientSampleId :  
 WC-A2-17-C

Tgt Ion: 240 Resp: 881184

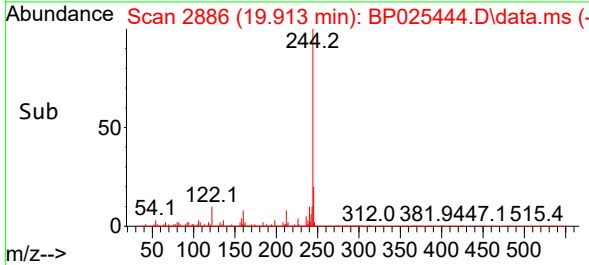
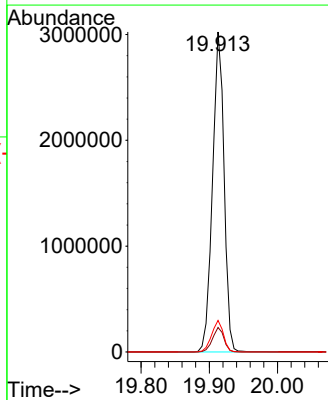
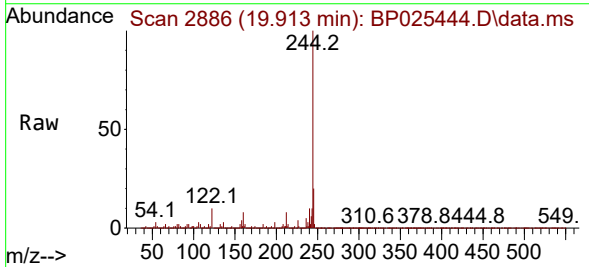
Ion	Ratio	Lower	Upper
240	100		
120	10.5	8.9	13.3
236	25.5	19.8	29.8

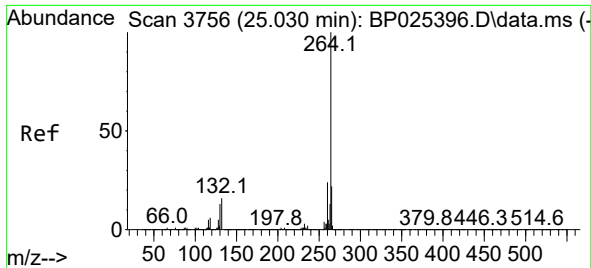


#79  
 Terphenyl-d14  
 Concen: 74.008 ng  
 RT: 19.913 min Scan# 2886  
 Delta R.T. -0.006 min  
 Lab File: BP025444.D  
 Acq: 16 Aug 2025 04:00

Tgt Ion: 244 Resp: 3564458

Ion	Ratio	Lower	Upper
244	100		
212	7.7	5.8	8.6
122	9.9	7.4	11.2





#86  
 Perylene-d12  
 Concen: 20.000 ng  
 RT: 24.977 min Scan# 31  
 Delta R.T. -0.053 min  
 Lab File: BP025444.D  
 Acq: 16 Aug 2025 04:00

Instrument :  
 BNA\_P  
 ClientSampleId :  
 WC-A2-17-C

Tgt Ion: 264 Resp: 984410

Ion	Ratio	Lower	Upper
264	100		
260	24.3	19.3	28.9
265	21.9	17.4	26.0

